

KEYSHEET AND GENERAL INFORMATION

DATE 10/06/11

PAGE 1

ORDER NO.- N3432 MODEL - HTC-86100 SERIAL NO. - N3K2-2587

DISTRIBUTOR: KELLY TRACTOR CO.

SALES ORDER: 022587

ENGINE:

TRANSMISSION:

MODEL- CAT C13 SERIES

MODEL- ZF 12-AS-2302

S/N- LEE23608

S/N- 00686509

OPERATION- SEBU8087

OPERATION- NONE

PARTS- SEBP4356

AEM: BOOK- C-70-2

VIDEO- DVD-CR

O/M BOOK- 1185022311

ADDENDUMS - NONE

TECH BULLETINS - NONE

MISCELLANEOUS - HOIST ROPE CAUTION

PARTS PAGE	DESCRIPTION	PARTS PAGE	DESCRIPTION
01	RUBBER TIRE LOWER	01	RUBBER TIRE LOWER

01-001-294.00	TOWING SHACKLES	01-043-046.00	4 WAY SOLENOID VALVE ASSY
01-001-446.00	CLEARANCE FLAGS	01-043-047.00	2 WAY VALVE STACK ASSY
01-001-501.00	SAND STRIP INSTALLATION	01-043-050.00	4 WAY SOLENOID VALVE ASSY
01-001-568.00	CARRIER MIRRORS	01-045-157.00	O/R BEAMS, CYLINDERS AND LINES
01-001-569.00	LH MIRROR ASSY		
01-001-570.00	RH MIRROR ASSY	01-046-085.00	5TH OUTRIGGER JACK CYLINDER ASSY
01-001-572.00	BOOM REST INSTALLATION		
01-001-630.00	SHEET METAL, OIL COOLER, & LADDER INSTALLATION	01-046-086.00	JACK CYLINDER ASSY
		01-046-087.00	JACK CYLINDER ASSY
01-002-222.00	FRONT AXLE ASSY	01-047-047.00	RELIEF VALVE ASSY
01-002-223.00	FRONT FRONT AXLE ASSY	01-047-061.00	MANIFOLD VALVE ASSY
01-004-126.00	FRONT AXLES & SUSPENSION	01-048-212.00	ROTATING JOINT & CENTER SECTION
01-004-135.00	FRONT SUSPENSION ARM ASSY		
01-005-086.00	TIE ROD ASSY	01-049-054.00	PONTOON INSTALLATION
01-005-087.00	STEER COLUMN ASSY	01-050-034.00	OIL COOLER ASSY
01-005-091.00	MASTER STEERING GEAR ASSY	01-066-212.00	BATTERY SPECIFICATIONS
01-005-092.00	SLAVE STEERING GEAR ASSY	01-066-218.00	BATTERY INSTALLATION
01-006-149.00	POWER STEER GEAR SYSTEM	01-066-227.00	ENGINE WIRE HARNESS
01-012-229.00	FUEL TANK INSTALLATION	01-067-173.00	DAYTIME RUNNING LIGHTS INSTALLATION
01-012-250.00	FUEL TANK ASSY		
01-018-148.00	MAIN TRANSMISSION ASSY	01-067-256.00	CARRIER WIRE HARNESS
01-020-006.00	BRAKE VALVE ASSY	01-067-273.00	CARRIER WIRING
01-022-303.00	DRIVE TRAIN	01-068-110.00	ELECTRICAL CENTER INSTALL
01-024-328.00	FRONT REAR AXLE ASSY	01-069-309.00	FRONT TIRE & WHEEL ASSY
01-024-329.00	REAR REAR AXLE ASSY	01-069-335.00	TIRE & WHEEL ASSY
01-027-324.00	AIR DRYER ASSY	01-071-343.00	RIGHT SIDE SLIDING WINDOW
01-027-394.00	AIR CONTROLS	01-071-344.00	REAR SLIDING WINDOW ASSY
01-029-219.00	REAR SUSPENSION ARM ASSY	01-071-413.00	CARRIER CAB ASSY
01-029-220.00	REAR AXLES, WHEELS & SUSPENSION	01-071-435.00	RIGHT SIDE PANEL INSTALL
		01-072-026.00	SEAT ASSY
01-037-027.00	BOTTOM BEAM CYLINDER ASSY	01-073-125.00	DASH PANEL ASSY
01-037-028.00	TOP BEAM CYLINDER ASSY	01-076-120.00	COLLECTOR RING ASSY
01-038-231.00	OUTRIGGER VALVES & LINES	01-077-083.00	RADIATOR/AIR COOLER ASSY
01-039-100.00	FILTER ASSY	01-077-090.00	AIR CLEANER INSTALLATION
01-039-103.00	HYD RESERVOIR INSTALL	01-077-091.00	AIR CLEANER ASSY

KEYSHEET AND GENERAL INFORMATION

DATE 10/06/11
PAGE 2

ORDER NO.- N3432 MODEL - HTC-86100 SERIAL NO. - N3K2-2587

PARTS PAGE	DESCRIPTION	PARTS PAGE	DESCRIPTION
01	RUBBER TIRE LOWER	06	UPPER ENGINE

01-077-121.00	SURGE TANK ASSY	06-025-264.00	DIESEL COOLANT HEATER
01-077-122.00	RADIATOR INSTALLATION		ASSY
01-077-124.00	ENGINE, TRANSMISSION & PUMP	06-047-251.00	UPPER WIRING
		06-048-103.00	UPPER CAB WIRE HARNESS
01-077-147.00	DPF INSTALLATION		
01-079-223.00	LOWER MAIN HYDRAULICS	07	UPPER HYDRAULICS & AIR

01-081-099.00	3 SECTION GEAR PUMP ASSY	07-003-059.00	3 WAY SOLENOID VALVE ASSY
01-081-106.00	2 SECTION GEAR PUMP ASSY	07-003-076.00	4 WAY SOLENOID VALVE ASSY
01-081-108.00	1 SECTION GEAR PUMP ASSY	07-003-088.00	PIN LATCH VALVE ASSY
01-081-111.00	GEAR MOTOR ASSY	07-004-597.00	UPPER MAIN HYDRAULICS
01-081-116.00	MAIN PUMPS INSTALLATION	07-006-330.00	SWING MOTOR ASSY
01-089-064.00	BOOM TRAILER CAB CONTROLS	07-006-497.00	WINCH MOTOR ASSY
01-089-067.00	BOOM TRAILER AIR & ELEC COMPONENTS	07-006-512.00	TWO WINCH PLUMBING
		07-008-495.00	SWING CONTROL VALVE ASSY
		07-008-503.00	COUNTERBALANCE VALVE ASSY
03	UPPER FRAME & MACHY	07-008-506.00	WINCH CONTROL VALVE ASSY

03-002-059.00	SEAT ASSY	07-008-514.00	CONTROLLER VALVE ASSY
03-003-243.00	39,500 LB COUNTERWEIGHT INSTALLATION	07-008-540.00	BH/TELE CONTROL VLV ASSY
		07-010-427.00	SEAT & SGL AXIS CONTROLS
03-003-244.00	620 LB CTWT INSTALLATION		
03-006-155.00	2 POSITION SWING LOCK	14	CAB & HOUSE ASSEMBLY

03-010-127.00	CTWT REMOVAL VALVE ASSY	14-001-628.00	REAR SLIDING WINDOW ASSY
03-010-145.00	MANIFOLD BLOCK VALVE ASSY	14-001-629.00	RIGHT SIDE SLIDING WINDOW
03-010-146.00	CTWT REMOVAL CYLINDER ASSY	14-001-721.00	CAB MOUNTING
03-010-147.00	COUNTERWEIGHT REMOVAL PLUMBING	14-001-734.00	UPPER STORAGE BOX INSTALL
		14-001-735.00	UPPER SHEET METAL INSTALL
		14-001-816.00	TOP HATCH WINDOW ASSY
04	VERTICAL SHAFTS	14-001-824.00	UPPER CAB STEP INSTALL

04-010-092.00	SWING REDUCTION UNIT WITH PINION ASSY	14-001-842.00	UPPER CAB ASSY
04-010-094.00	SWING REDUCTION & TT BRG INSTALLATION		
		16	WIRE ROPE REQUIREMENTS

		16-000-001.00	WIRE ROPE SPECIFICATIONS
		16-000-166.00	TERMINATOR SOCKET & WEDGE & DRUM WEDGE
05	HORIZONTAL SHAFTS	16-005-060.00	WIRE ROPE-TYPE ZB - 600'

05-006-128.00	WINCH ASSY	16-005-075.00	WIRE ROPE - TYPE ZB -730'
05-006-215.00	TWO WINCH INSTALLATION		
05-018-029.00	2 DRUM WINCH ROLLER INSTALLATION	17	HYDRAULIC BOOM

		17-001-331.00	5 SECTION BOOM ASSY
		17-001-332.00	BOOM FOOT PIN & BEARING
		17-001-335.00	T1 SECTION ASSY

KEYSHEET AND GENERAL INFORMATION

DATE 10/06/11
PAGE 3

ORDER NO. - N3432

MODEL - HTC-86100

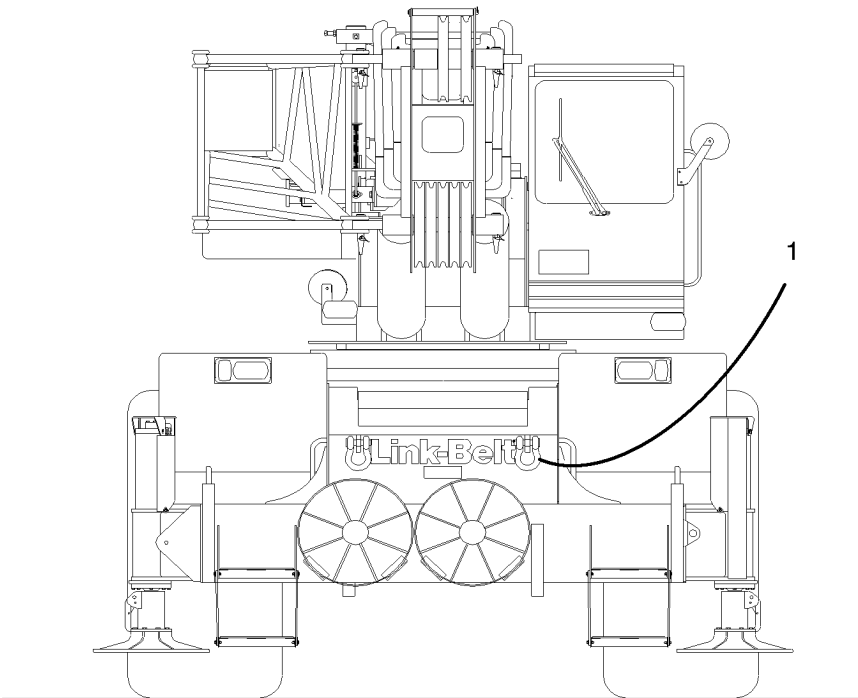
SERIAL NO. - N3K2-2587

PARTS PAGE	DESCRIPTION	PARTS PAGE	DESCRIPTION
17	HYDRAULIC BOOM	18	SPECIAL ATTACHMENTS

17-001-336.00	T2 SECTION ASSY	18-013-470.00	RCL SYSTEM & BOOM ANGLE INDICATOR INSTALLATION
17-001-337.00	T3 SECTION ASSY	18-014-007.00	FIRE EXTINGUISHER
17-001-338.00	T4 SECTION ASSY	18-014-128.00	KEY RING & CRANE RATING MANUAL INSTALLATION
17-001-342.00	BASE SECTION ASSY	18-018-049.00	COMPRESSOR ASSY
17-002-141.00	LATCHING CYLINDER ASSY	18-018-079.00	CARRIER HEATER & AIR CONDITIONER UNIT ASSY
17-002-187.00	HOSE & ELEC REEL ASSY	18-018-095.00	GEAR MOTOR ASSY
17-002-189.00	TELESCOPE CYLINDER ASSY	18-018-098.00	UPPER HEATER & EVAPORATOR ASSY
17-002-191.00	PINNING CYLINDER ASSY	18-018-105.00	CONDENSER ASSY
17-002-197.00	TELESCOPE, PIN, & LATCH CYLINDERS INSTALLATION	18-018-123.00	COMPRESSOR ASSY
17-003-185.00	BOOM HOIST CYLINDER & LINES	18-018-124.00	CARRIER HEATER & AIR CONDITIONER INSTALLATION
17-003-193.00	BOOM HOIST CYLINDER ASSY	18-018-166.00	UPPER AIR CONDITIONING & HEATER INSTALLATION
17-009-108.00	5 SHEAVE HEAD MACHINERY	18-020-164.00	SCHEMATICS
17-009-123.00	AUXILIARY LIFTING SHEAVE	18-024-031.00	LABELS
17-010-374.00	FLY TIP STORAGE BRACKETS	18-024-046.00	LUBRICATION CHART
17-010-396.00	35 FT FLY BASE		
17-010-398.00	23 FT FLY TIP		
17-010-400.00	FLY BASE STORAGE BRACKETS		
17-010-498.00	FLY BASE ASSY		
17-010-499.00	FLY TIP ASSY		
17-010-502.00	16' (4.88M) FLY EXTENSION WITH SHEAVE ASSY		
17-010-503.00	16' (4.88M) FLY EXT ASSY		
18	SPECIAL ATTACHMENTS		

18-004-111.00	60 TON 4 SHV HOOK BLOCK		
18-004-123.00	10 TON SWIVEL HOOK BALL		
18-004-199.00	HOOK BLOCK TIE DOWN CABLE INSTALLATION		
18-005-124.00	CARRIER CAB STROBE LIGHT INSTALLATION		
18-005-150.00	UPPER CAB STROBE LIGHT INSTALLATION		
18-007-272.00	ATB WEIGHT ASSY		
18-007-275.00	REELING DRUM ASSY		
18-009-781.00	LINK-BELT LABELS & STRIPE		
18-009-785.00	39,500 LB CTWT LABELS		
18-009-786.00	FLY LABELS		
18-009-809.00	CRANE RATING MANUAL & ID LABEL		
18-009-945.00	FLY EXTENSION LABELS		
18-009-967.00	ENGINE LABELS		
18-009-974.00	LINK-BELT GRILLE LABEL		

Towing Shackles

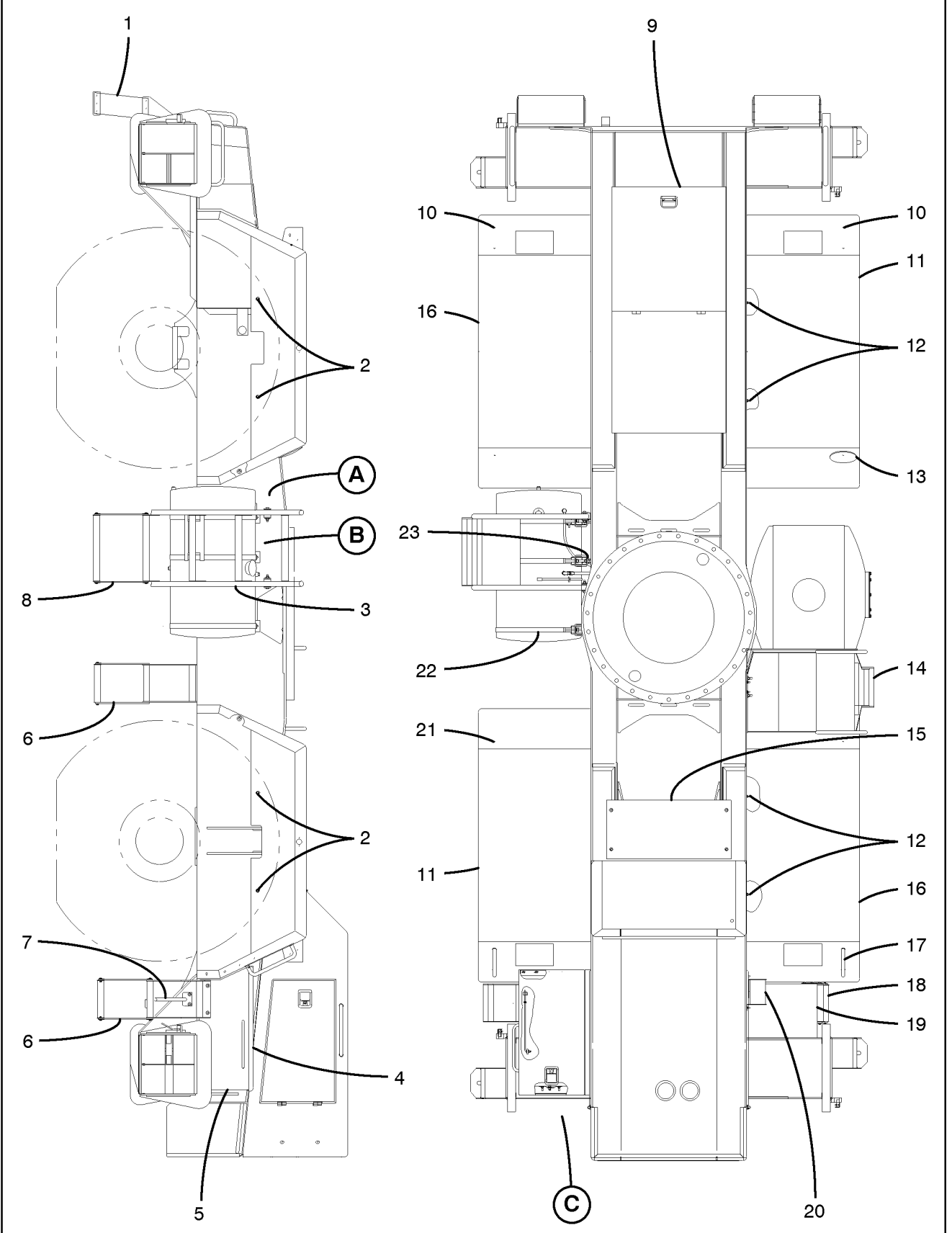


Parts List

0606

Towing Shackles				
REF	PART NO.	QTY	DESCRIPTION	REMARKS
1	36A0789	2	Shackle, Anchor	

Sheet Metal & Ladder Installation

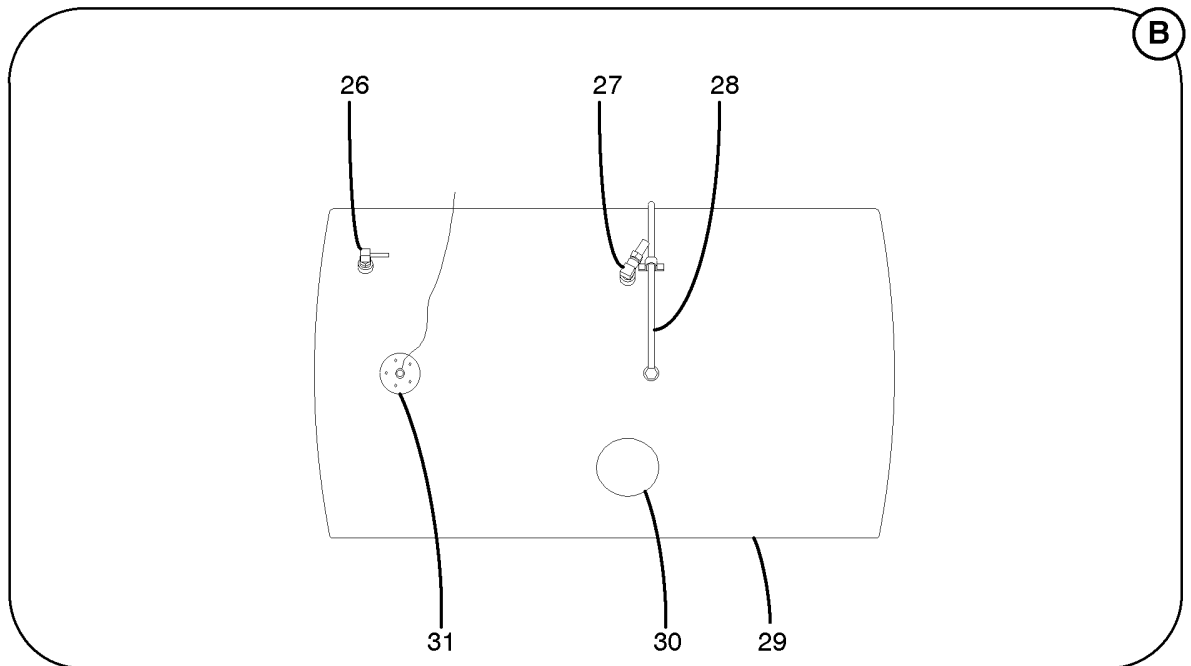
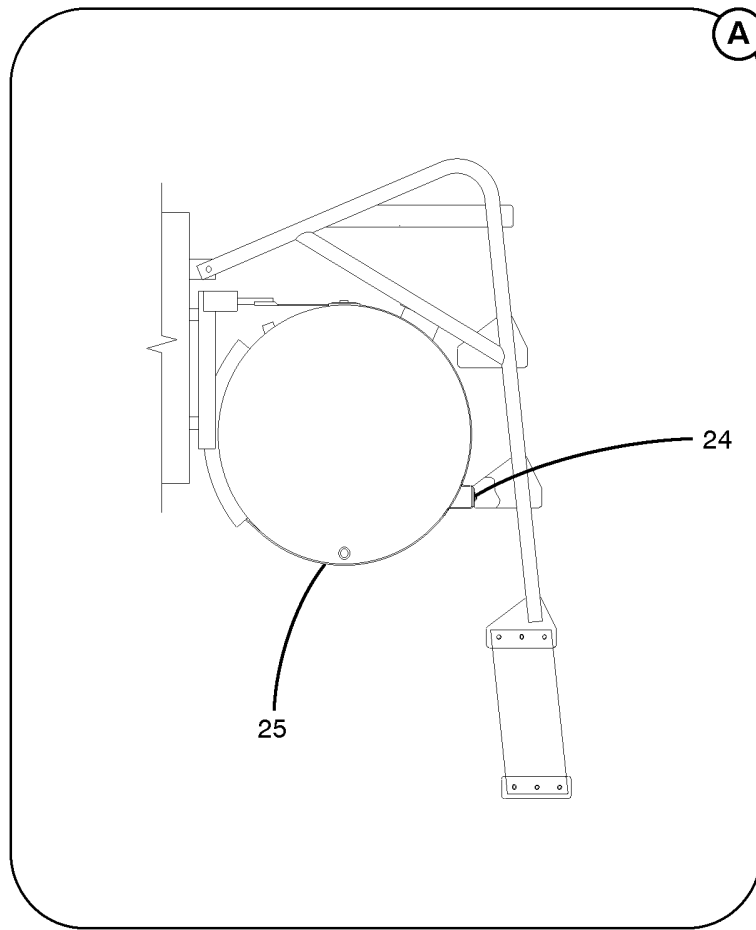


Parts List

0707

Sheet Metal & Ladder Installation				
REF	PART NO.	QTY	DESCRIPTION	REMARKS
1	D7A0658	2	Step	
	D7A0149	4	Hanger, Step	
	D7A0115	8	Sheet	
	126009096	16	Capscrew – 1.25" Lg	
	126009097	4	Capscrew – 1.75" Lg	
	128003002	40	Washer	
	127004002	20	Locknut	
	128003004	4	Washer	
2	127004003	4	Locknut	
	128003004	4	Washer	
3	D7A0681	1	Ladder, Left Side	
	126009036	2	Capscrew	
	128003006	2	Washer	
	127004005	2	Locknut	
4	D7A0292	1	Lid	
	57J0240	6	Nutsert	
	126009012	6	Capscrew	
	128003004	6	Washer	
	824033010	2	Weatherstrip – 0.25'	
5	D7A0721	1	Box, Battery	
	126009012	8	Capscrew	
	128003004	8	Washer	
6	D7A0667	2	Step	
	D7A0149	4	Hanger, Step	
	D7A0115	8	Sheet	
	126009096	24	Capscrew	
	128003002	48	Washer	
	127004002	24	Locknut	
7	D7A0471	1	Bracket	
	126009014	1	Capscrew	
	128003004	4	Washer	
	127004003	3	Locknut	
8	D7A0659	1	Step	
	D7A0149	2	Hanger, Step	
	D7A0115	4	Sheet	
	126009096	12	Capscrew	
	128003002	24	Washer	
	127004002	12	Locknut	
9	53A0431	1	Lid, Storage Box	
	D7A0580	1	Handle	
	1X 4410	4	Rivet	
10	D7A0336	4	Plug	
11	D7A0310	2	Fender	
	128003006	16	Washer	
	127004005	16	Locknut	
12	128003004	4	Washer	
	127004003	4	Locknut	
13	53A0455	1	Mirror	
	128003002	1	Washer	
14	D7A0663	1	Ladder, Right Side	
	128003006	5	Washer	
	127004005	5	Locknut	

Sheet Metal & Ladder Installation

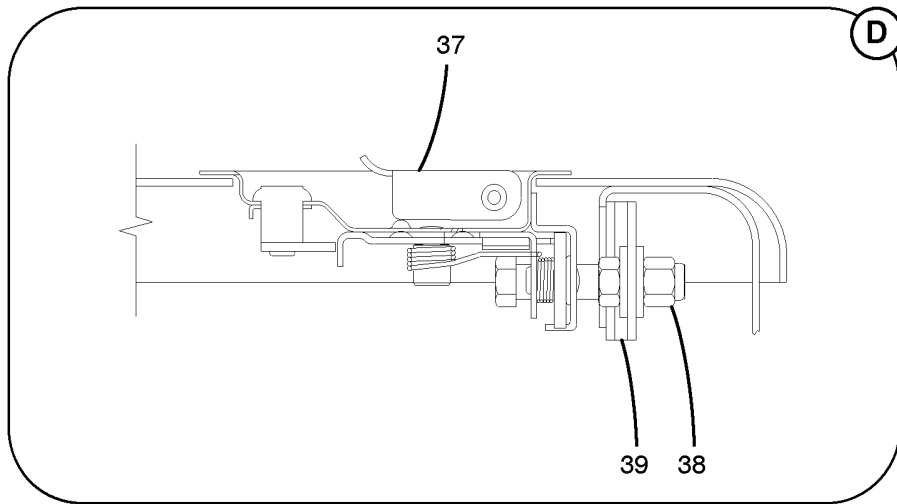
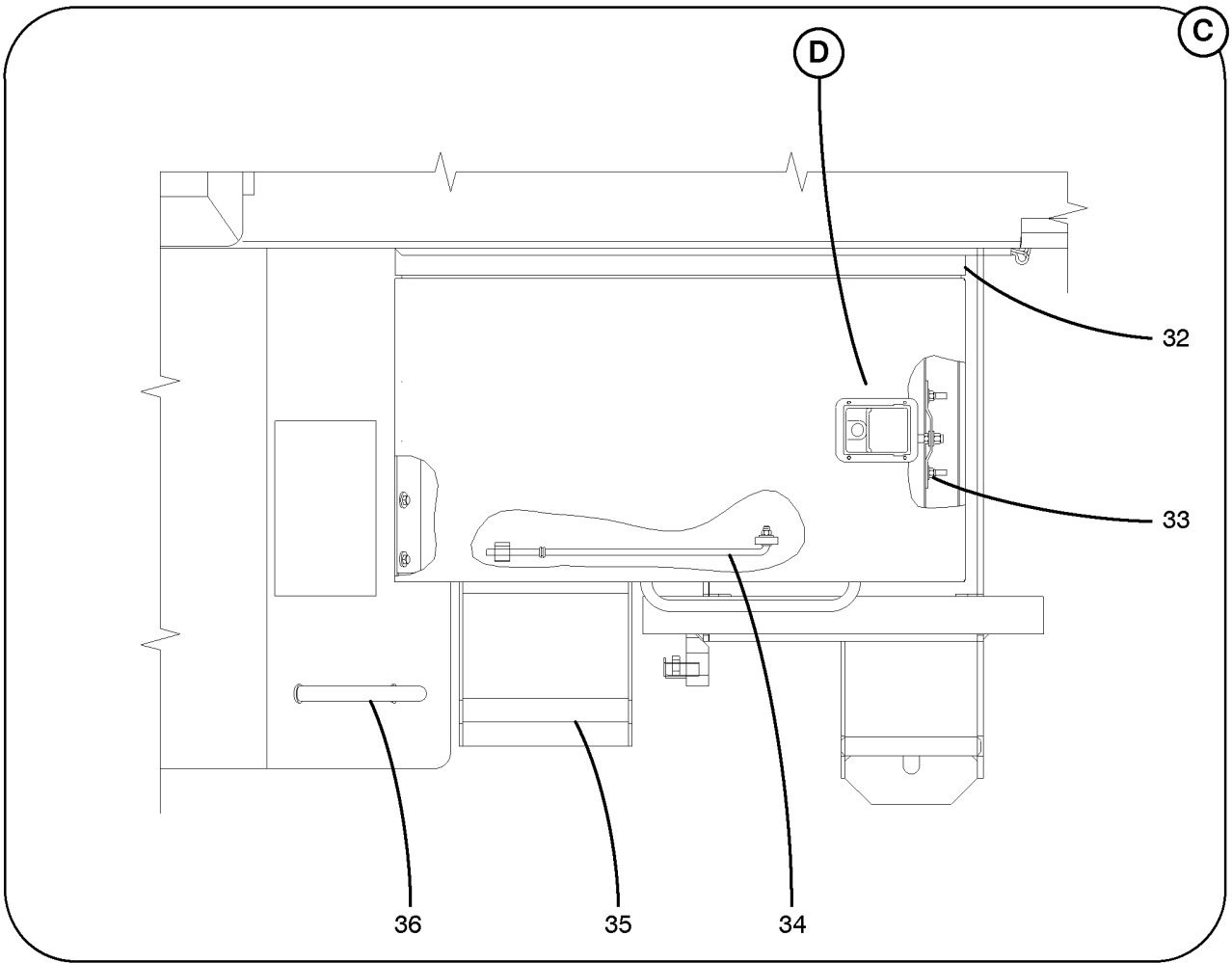


Parts List

0707

Sheet Metal & Ladder Installation				
REF	PART NO.	QTY	DESCRIPTION	REMARKS
15	D7A0716	1	Cover	NSS
	128003004	4	Washer	
	127004003	4	Locknut	
16	D7A0313	2	Fender	
	128003006	16	Washer	
	127004005	16	Locknut	
17	53A0841	1	Handle, Grab	
18	D7A0667	1	Step	
	D7A0149	2	Hanger, Step	
	D7A0115	4	Sheet	
	126009096	12	Capscrew	
	128003002	24	Washer	
	127004002	12	Locknut	
19	D7A0661	1	Ladder, Right Rear	
	128003004	4	Washer	
	127004003	4	Locknut	
20	D7A0668	1	Step	
	128003004	2	Washer	
	127004003	2	Locknut	
21	D7A0336	3	Plug	
22	65A1072	3	Bracket, Fuel Tank	
23	126009108	6	Capscrew	
	128003008	6	Washer	
24	D7A0244	1	Support, Step	
	126009014	2	Capscrew	
	128003004	4	Washer	
	127004003	2	Locknut	
25	N3A0352	3	Insulation – 60" Lg	
	D6A0554	3	Insulation – 19" Lg	
26	J7H0116	1	Fuel Tank S/A	
	1X 2169	1	Reducer	
	1X 5365	1	Stem, Hose	
27	1X 5205	1	Stem, Hose	
	1X 1911	1	Elbow	
28	822013003	1	Hose – 2.75'	
29	N3A0333	1	Tank, Fuel	
30	3A 18375	1	Cap & Chain Assy	
31	P9R0042	1	Sender, Fuel	
	36A3095	1	Kit, Hardware	
	36A3096	1	Gasket	
32	D7A0289	1	Sheet	
	126009026	1	Capscrew	
	128003006	1	Washer	
	127004005	1	Locknut	
33	126009013	2	Capscrew	
	128003004	2	Washer	
	127004003	2	Locknut	
34	53A0606	1	Rod	
	36J0235	1	Grommet	
	128003004	1	Washer	
	127004003	1	Locknut	

Sheet Metal & Ladder Installation

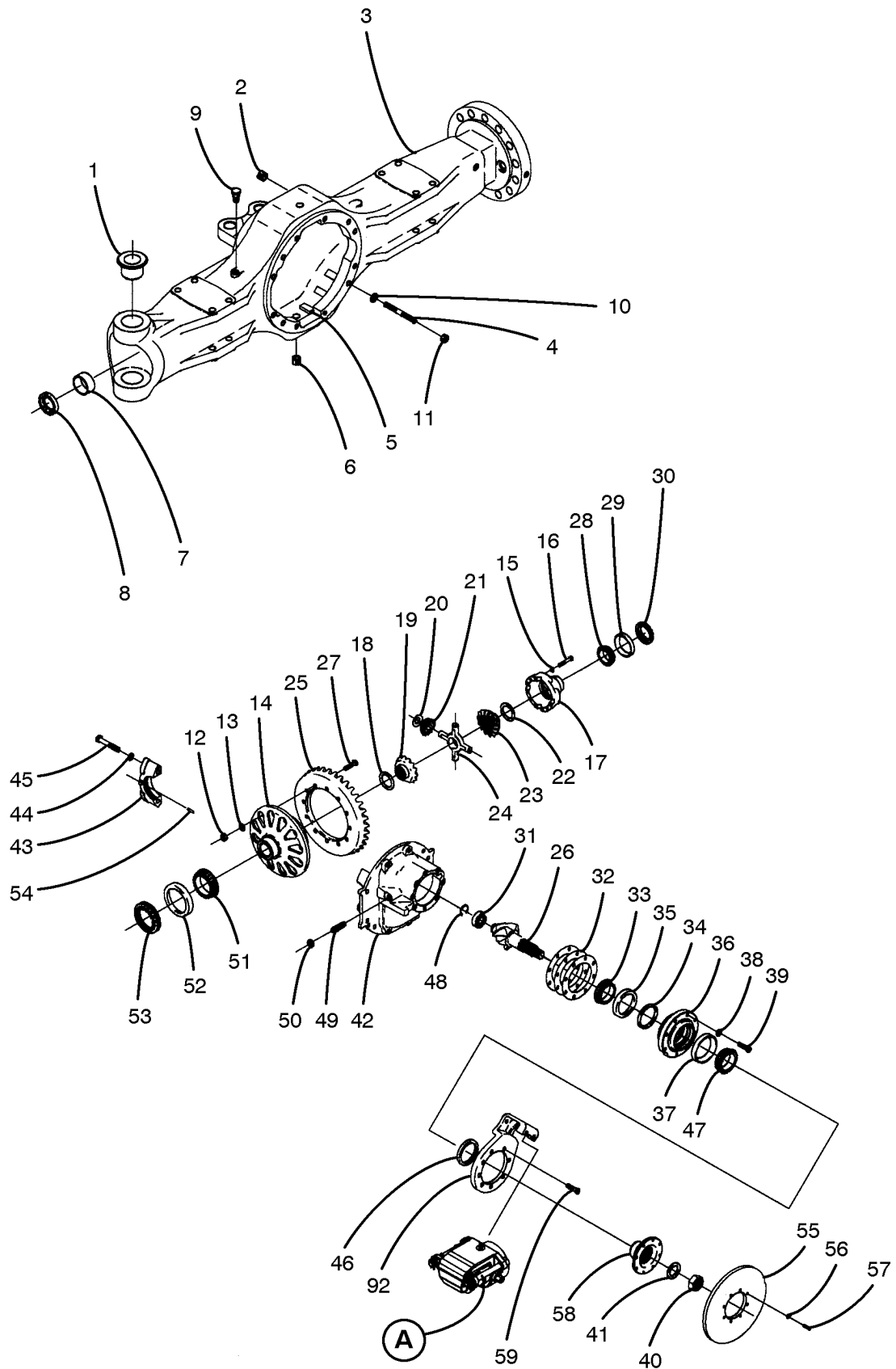


Parts List

0707

Sheet Metal & Ladder Installation				
REF	PART NO.	QTY	DESCRIPTION	REMARKS
35	D7A0677	1	Ladder, Rear	
	126009014	2	Capscrew	
	128003004	4	Washer	
	127004003	2	Locknut	
36	53A0841	1	Handle, Grab	
37	F7A0778	1	Latch	
	3A 18945	2	Key	
	D6N0082	1	Bezel	
	1X 6199	4	Rivet	
	1X 7217	4	Washer	
	126009033	1	Capscrew	
	128003006	2	Washer	
	1X 0183	1	Nut, Jam	
38	127004005	1	Locknut	
	D7A0719	1	Striker	

Front Axle Assy

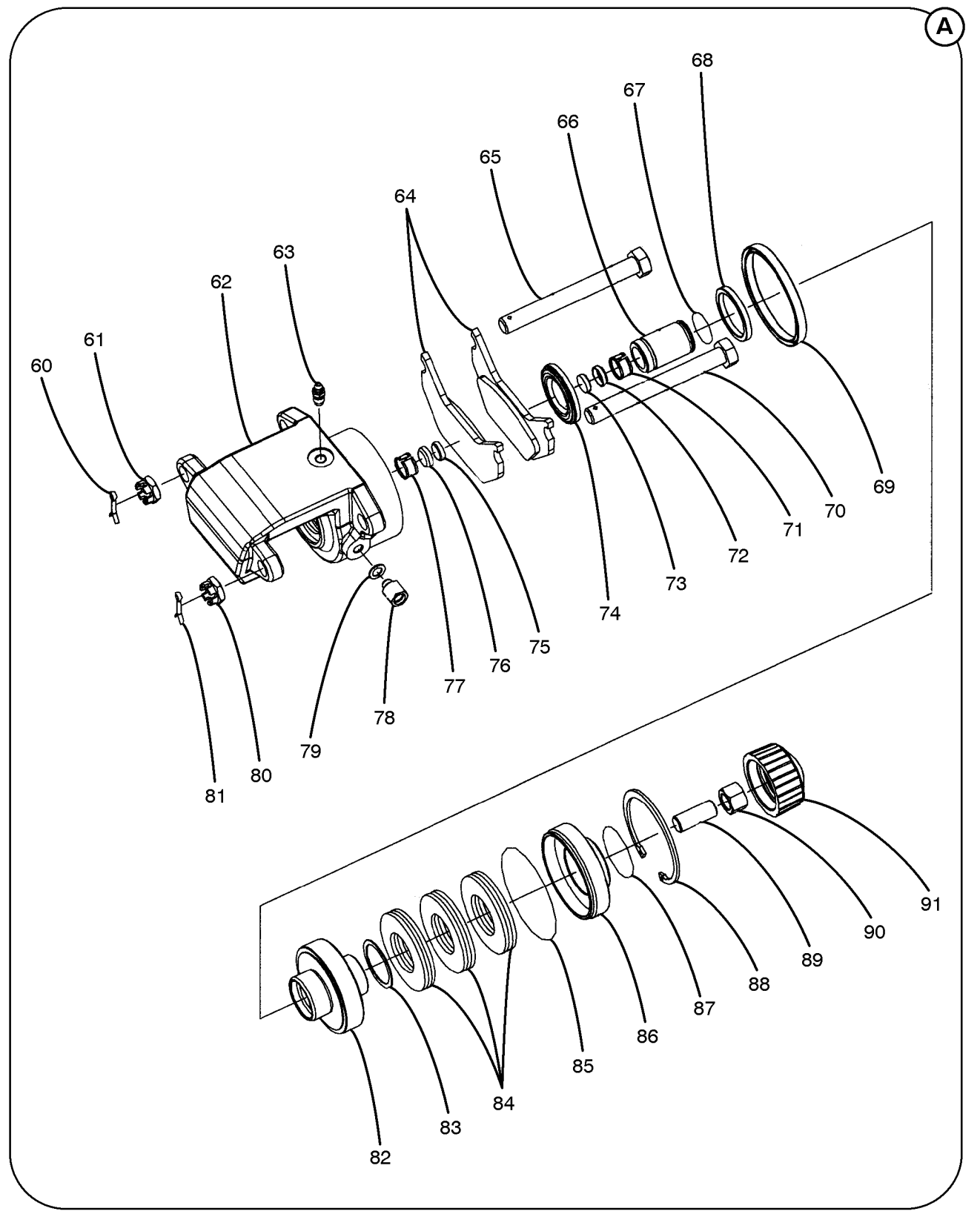


Parts List

0403

Front Axle Assy				
REF	PART NO.	QTY	DESCRIPTION	REMARKS
	D7A0595	1	Front Axle Assy	
	3A 23818	1	Axle Housing Assy	
1	3A 22924	4	Bushing	
2	3A 3527	1	Plug	
3	REF	1	Housing, Axle	NSS
4	3A 14305	8	Stud – Short	
	3A 19553	4	Stud – Long	
5	3A 19123	6	Magnet	
6	3A 10650	1	Plug, Magnetic Drain	
7	3A 7259	2	Bushing	
8	3A 15576	2	Seal, Oil	
9	3A 3766	1	Breather Assy	
10	3A 3519	12	Washer	
11	3A 6722	12	Locknut	
	3A 23783	1	Differential Carrier Assy	
	3A 23784	1	Differential Carrier & Cap Assy	
12	3A 18131	12	Locknut	
13	3A 10410	12	Washer, Flat	
	3A 19545	1	Differential Case & Nest Assy	
	3A 19546	1	Differential Case Assy	
14	REF	1	Case, Differential – Flange Half	NSS
15	3A 20151	16	Washer	
16	3A 19537	16	Capscrew	
17	REF	1	Case, Differential – Plain Half	NSS
18	3A 19539	1	Washer, Thrust	
19	3A 19540	1	Gear, Differential Side	
20	3A 6427	4	Washer, Thrust	
21	3A 19541	4	Pinion, Differential	
22	3A 19539	1	Washer, Thrust	
23	3A 19540	1	Gear, Differential Side	
24	3A 12887	1	Spider, Differential	
	3A 20190	1	Bevel Gear Assy	
25	REF	1	Gear	NSS
26	REF	1	Pinion	NSS
27	3A 19543	12	Capscrew	
28	3A 22945	1	Cone, Bearing	
29	3A 22946	1	Cup, Bearing	
30	3A 19593	1	Ring, Bearing Adjusting	
31	3A 7378	1	Bearing, Roller	
32	3A 19525	1	Shim – .003 – AR	
	3A 19526	2	Shim – .005 – AR	
	3A 19527	3	Shim – .010 – AR	
	3A 19528	1	Shim – .020 – AR	
33	3A 6390	1	Cone, Bearing	

Front Axle Assy



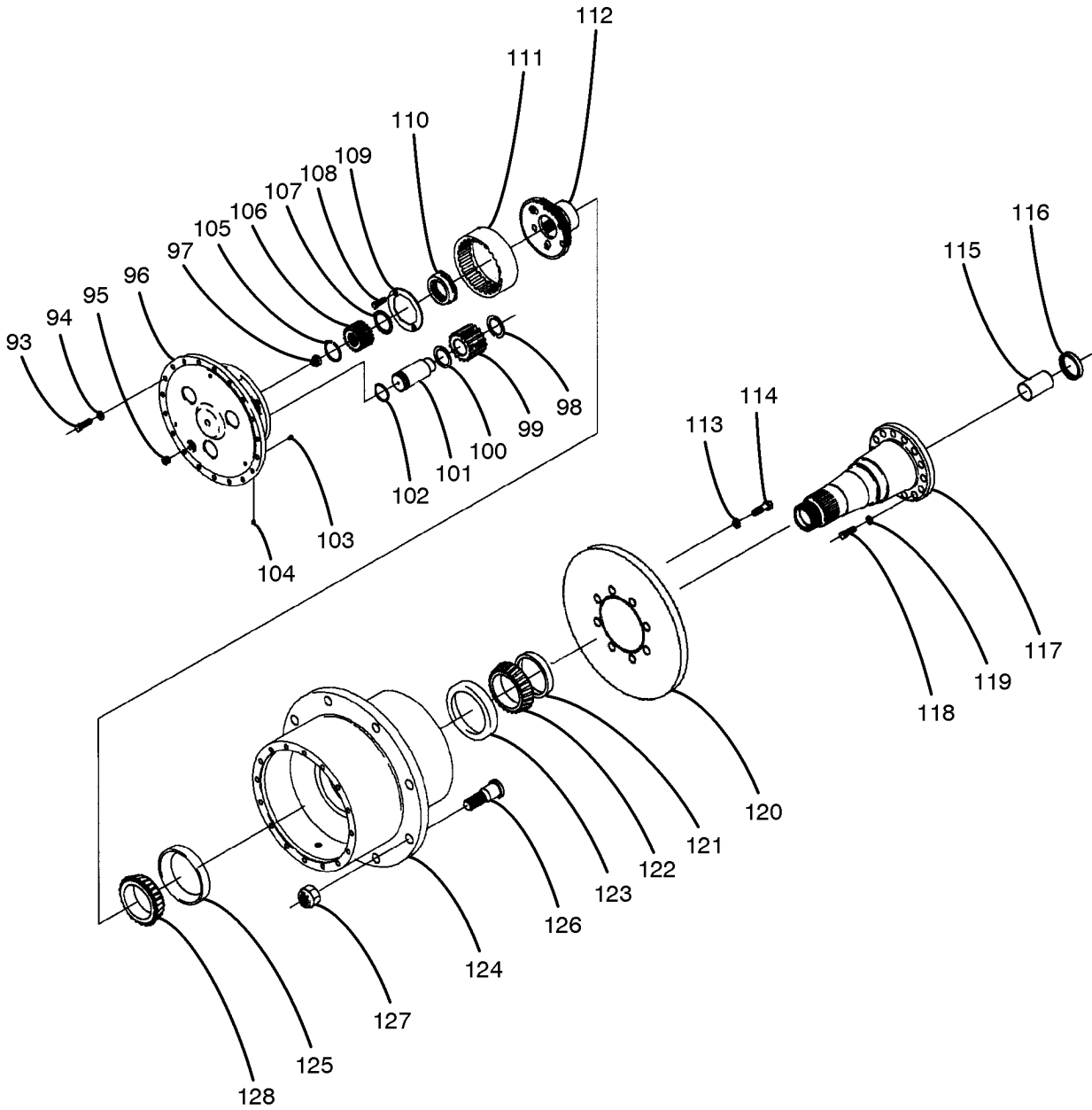
A

Parts List

0403

Front Axle Assy				
REF	PART NO.	QTY	DESCRIPTION	REMARKS
34	3A 19513	2	Spacer – .344 – AR	
	3A 19514	2	Spacer – .345 – AR	
	3A 19515	2	Spacer – .346 – AR	
	3A 19516	2	Spacer – .347 – AR	
	3A 19517	2	Spacer – .348 – AR	
	3A 19518	2	Spacer – .354 – AR	
	3A 19519	2	Spacer – .358 – AR	
	3A 19520	2	Spacer – .359 – AR	
	3A 19521	2	Spacer – .360 – AR	
	3A 19522	2	Spacer – .361 – AR	
	3A 19523	2	Spacer – .362 – AR	
	3A 19511	1	Pinion Cage Assy	
35	3A 4402	1	Cup, Bearing	NSS
36	REF	1	Cage, Pinion	
37	1X 2616	1	Cup, Bearing	
38	3A 20151	8	Washer	
39	3A 23819	8	Capscrew	
40	3A 20150	1	Locknut	
41	3A 6429	1	Washer, Flat	
	3A 19530	1	Carrier & Cap Assy	
42	REF	1	Carrier, Differential	
43	REF	2	Cap, Bearing	
44	3A 19532	4	Washer	NSS NSS
45	3A 19531	4	Capscrew	
46	3A 12920	1	Seal	
47	3A 19510	1	Cone, Bearing	
48	3A 3702	1	Ring, Lock	
49	3A 19547	1	Screw, Thrust	
50	3A 20153	1	Nut, Jam	
51	3A 22945	1	Cone, Bearing	
52	3A 22946	1	Cup, Bearing	
53	3A 19593	1	Ring, Bearing Adjusting	
54	3A 3521	2	Cotter	
	3A 23787	1	Yoke Assy	
55	3A 23788	1	Disc, Brake	
56	3A 4192	8	Washer	
57	3A 11747	8	Capscrew	
58	3A 23789	1	Yoke	
59	3A 23786	5	Capscrew	

Front Axle Assy

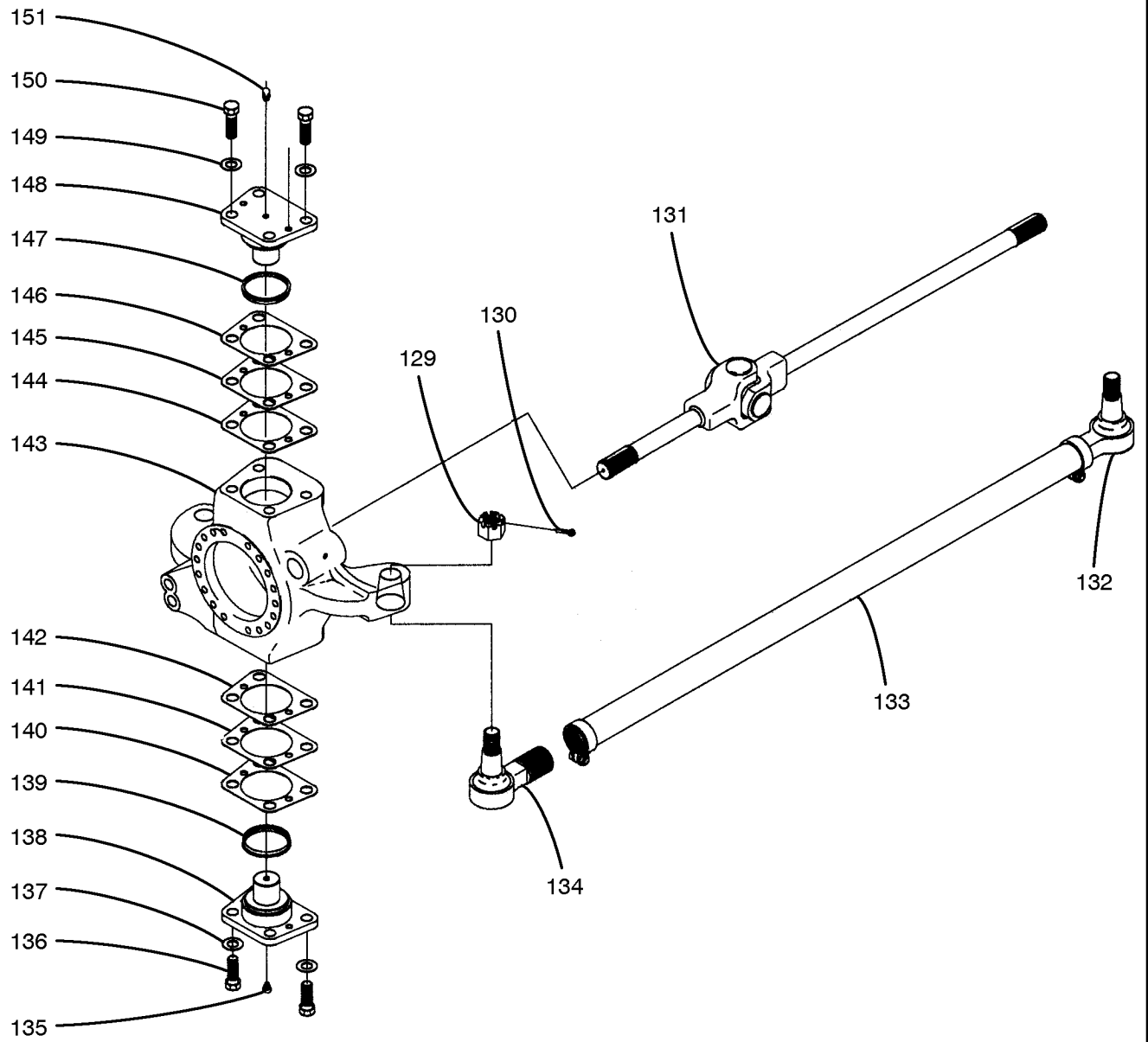


Parts List

0403

Front Axle Assy				
REF	PART NO.	QTY	DESCRIPTION	REMARKS
	3A 23790	1	Disc Brake Assy	
60	3A 23813	1	Cotter	
61	3A 23812	1	Nut	
62	3A 23814	1	Housing, Brake	
63	3A 23811	1	Screw, Bleeder	
64	3A 23809	2	Brake Shoe & Lining Assy	
65	3A 23805	1	Pin, Slide	
66	3A 23804	1	Sleeve	
67	3A 23803	1	O-ring	
68	3A 23802	1	Cup	
69	3A 23801	1	Cup	
70	3A 23805	1	Pin, Slide	
71	3A 23810	1	Sleeve	
72	3A 23806	1	Retainer	
73	3A 23808	1	Magnet	
74	3A 23807	1	Boot	
75	3A 23808	1	Magnet	
76	3A 23806	1	Retainer	
77	3A 23810	1	Sleeve	
78	3A 23816	1	Connector	
79	3A 23815	1	Washer, Flat	
80	3A 23812	1	Nut	
81	3A 23813	1	Cotter	
82	3A 23800	1	Piston	
83	3A 23799	1	Washer, Flat	
84	3A 23798	6	Spring	
85	3A 23797	1	O-ring	
86	3A 23796	1	Stop	
87	3A 23795	1	O-ring	
88	3A 23794	1	Retainer	
89	3A 23793	1	Setscrew	
90	3A 23792	1	Locknut	
91	3A 23791	1	Cap	
92	3A 23785	1	Adaptor, Brake	
93	3A 7405	30	Capscrew	
94	3A 16177	30	Washer, Flat	
95	3A 10650	2	Plug, Magnetic	
	3A 23780	1	Planetary Spider Assy	
96	REF	1	Spider, Planetary	NSS
97	3A 14432	1	Button, Thrust	
98	3A 7400	3	Washer, Thrust	
99	3A 10730	3	Pinion	
100	3A 7398	3	Washer, Thrust	

Front Axle Assy



Parts List

0403

Front Axle Assy				
REF	PART NO.	QTY	DESCRIPTION	REMARKS
	3A 12176	1	Pinion Shaft Assy	NSS
101	REF	1	Shaft, Pinion	
102	3A 12178	1	O-ring	
103	3A 7395	3	Button, Thrust	
104	3A 10702	3	Setscrew	
105	3A 0427	2	Ring, Snap	
106	3A 10703	2	Gear, Sun	
107	3A 15450	4	Washer, Thrust	
108	3A 19003	4	Screw	
109	3A 7297	2	Lock	
110	3A 7307	8	Nut	
111	3A 22230	1	Gear, Ring	
112	3A 23817	1	Hub	
113	3A 10410	16	Washer	
114	3A 6723	32	Capscrew	
	3A 23774	1	Spindle Assy	NSS
115	3A 7282	1	Bushing	
116	3A 14862	1	Seal, Oil	
117	REF	1	Spindle	
118	3A 7267	36	Capscrew	
119	3A 10755	36	Washer, Flat	
120	3A 23775	1	Rotor, Disc Brake	
121	3A 14437	1	Seal, Oil	
122	3A 12778	1	Cone, Bearing	
	3A 23776	1	Hub & Cup Assy	
123	3A 1119	1	Cup, Bearing	
124	3A 23777	1	Hub	
125	3A 1119	1	Cup, Bearing	
126	3A 22233	23	Stud, Wheel	
127	3A 7313	23	Nut	
128	3A 1118	4	Cone, Bearing	
129	3A 16185	2	Nut, Slotted	
130	3A 16186	2	Cotter	
131	3A 23772	1	U-joint Assy - LH	
	3A 23773	1	U-joint Assy - RH	
	3A 23781	1	Tie Rod Assy	
132	3A 22248	1	End, Tie Rod	
133	3A 23782	1	Clamp & Tie Rod Assy	
134	3A 22247	1	End, Tie Rod	
135	3A 23771	4	Fitting, Grease	
136	3A 7268	4	Capscrew	
137	3A 12581	4	Washer	
138	3A 23770	1	Cap, King Pin	
139	3A 22928	1	Seal, Grease	
140	3A 22931	1	Shim - .020 - AR	
141	3A 22930	2	Shim - .005 - AR	
142	3A 22929	3	Shim - .003 - AR	
143	3A 23769	1	Knuckle, Steering - LH	
	3A 23768	1	Knuckle, Steering - RH	

Parts List

0403

1-2-221.0

Front Axle Assy

