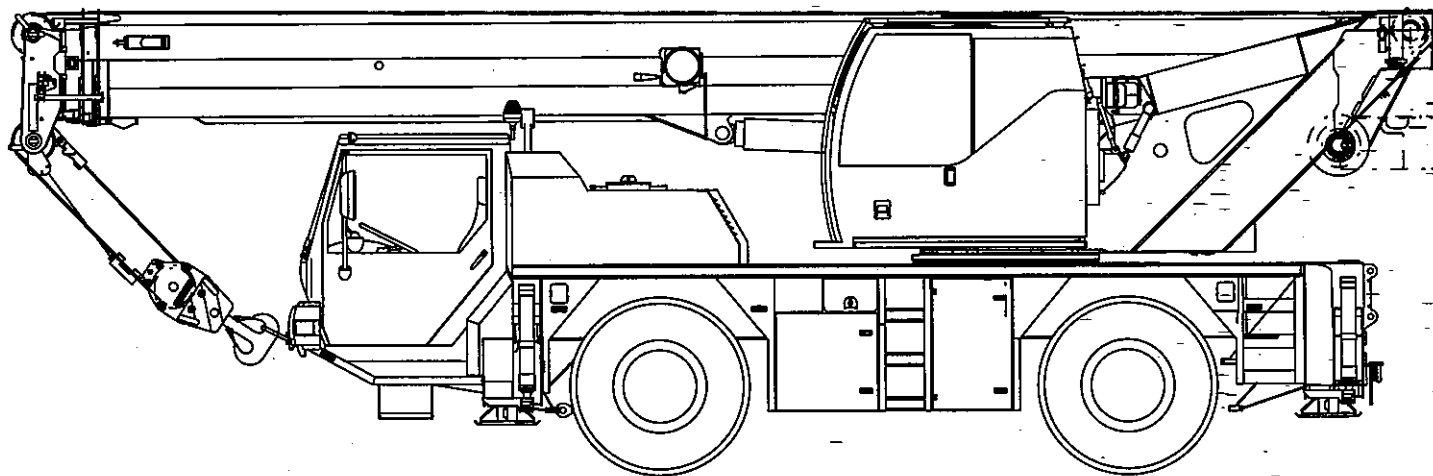


# LTM 1040-2.1

DB-ENGINE OM 906 LA  
ZF-TRANSMISSION 6 WG-210

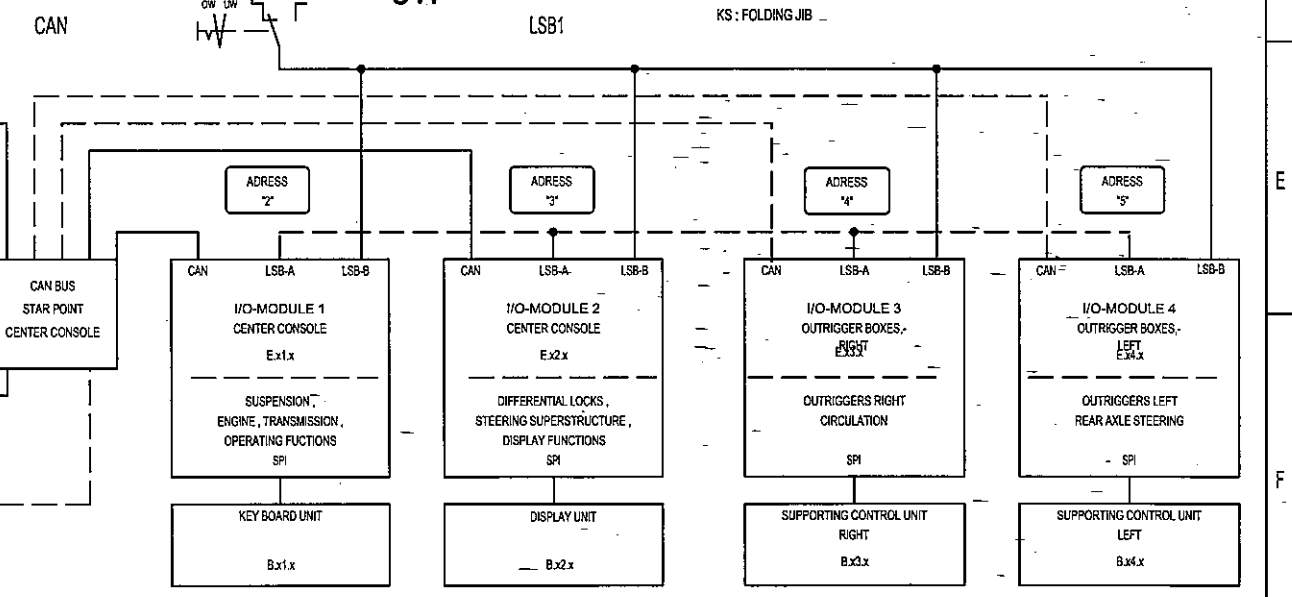
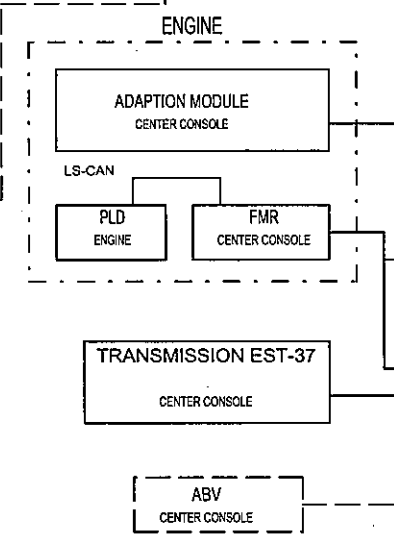
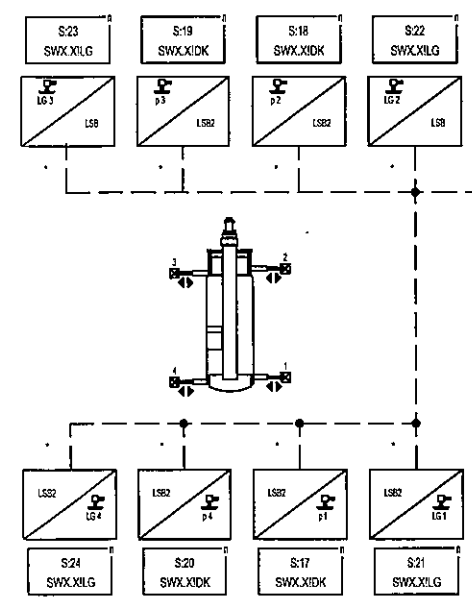
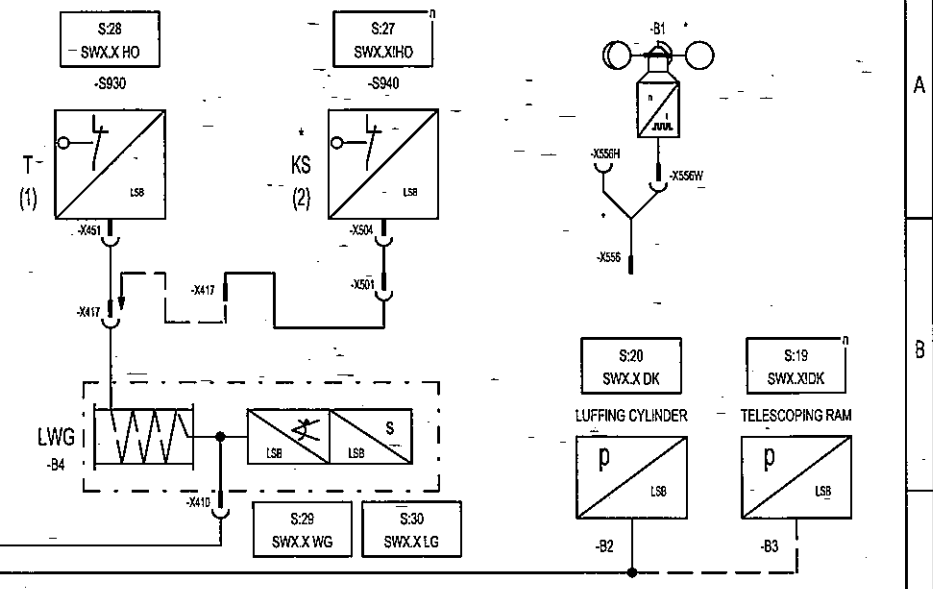
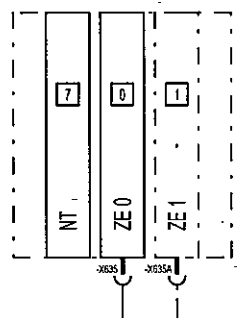
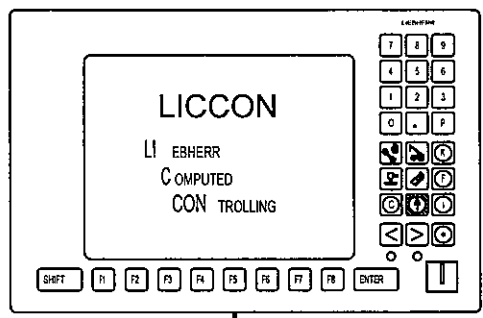
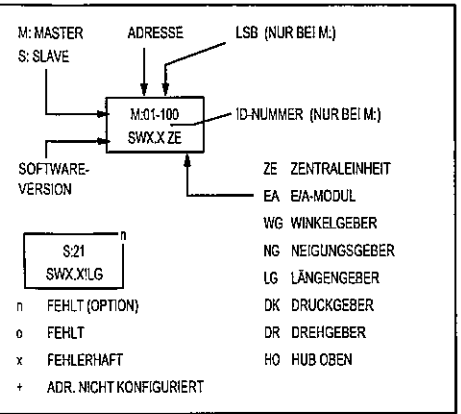


Änderung	Datum	Name	Gez.	Datum	lweklg0	Name	Copyright (c)	Kont-Nr.	Zeich-Nr.	Blatt	von
				07.11.06		LIEBHERR WERK		985572708		P2	
				09.11.06		EHINGEN			3283-920.02.00.001-000	P20	
										I	
										123	

CIRCUIT DIAGRAM  
ELECTR. SYSTEM VEHICLE







\*OPTION

3		Gez.	07.11.06	lweklg0	LIEBHERR WERK	Ident-Nr.	985572708	P2	
2		Ausgabe	09.11.06	lweklg0	EN	Zeich-Nr.	3283-920.02.00.001-000	P20	
1	Änderung	Datum		Name	Copyright (c)			4	
								von	123

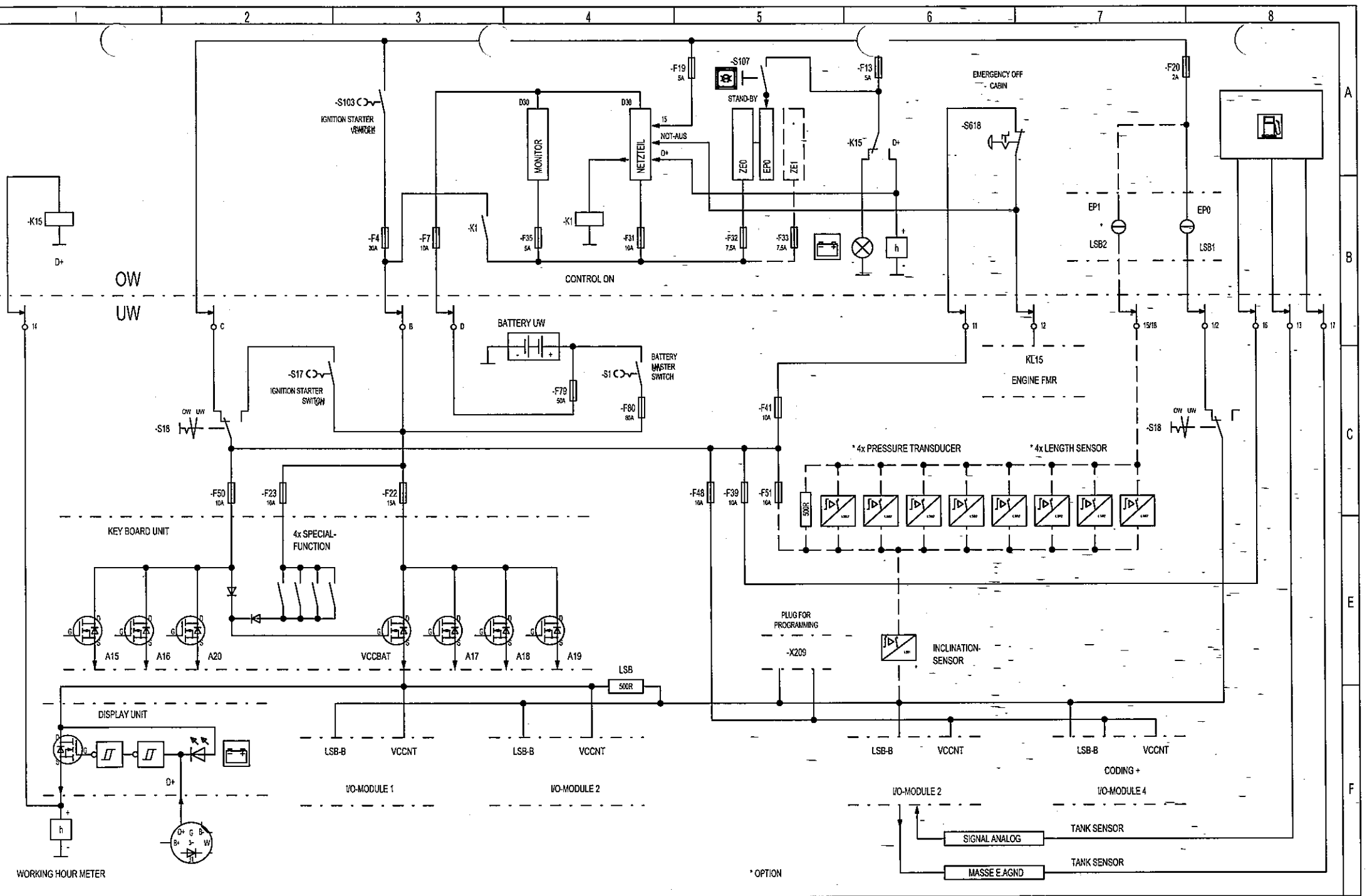
A

B

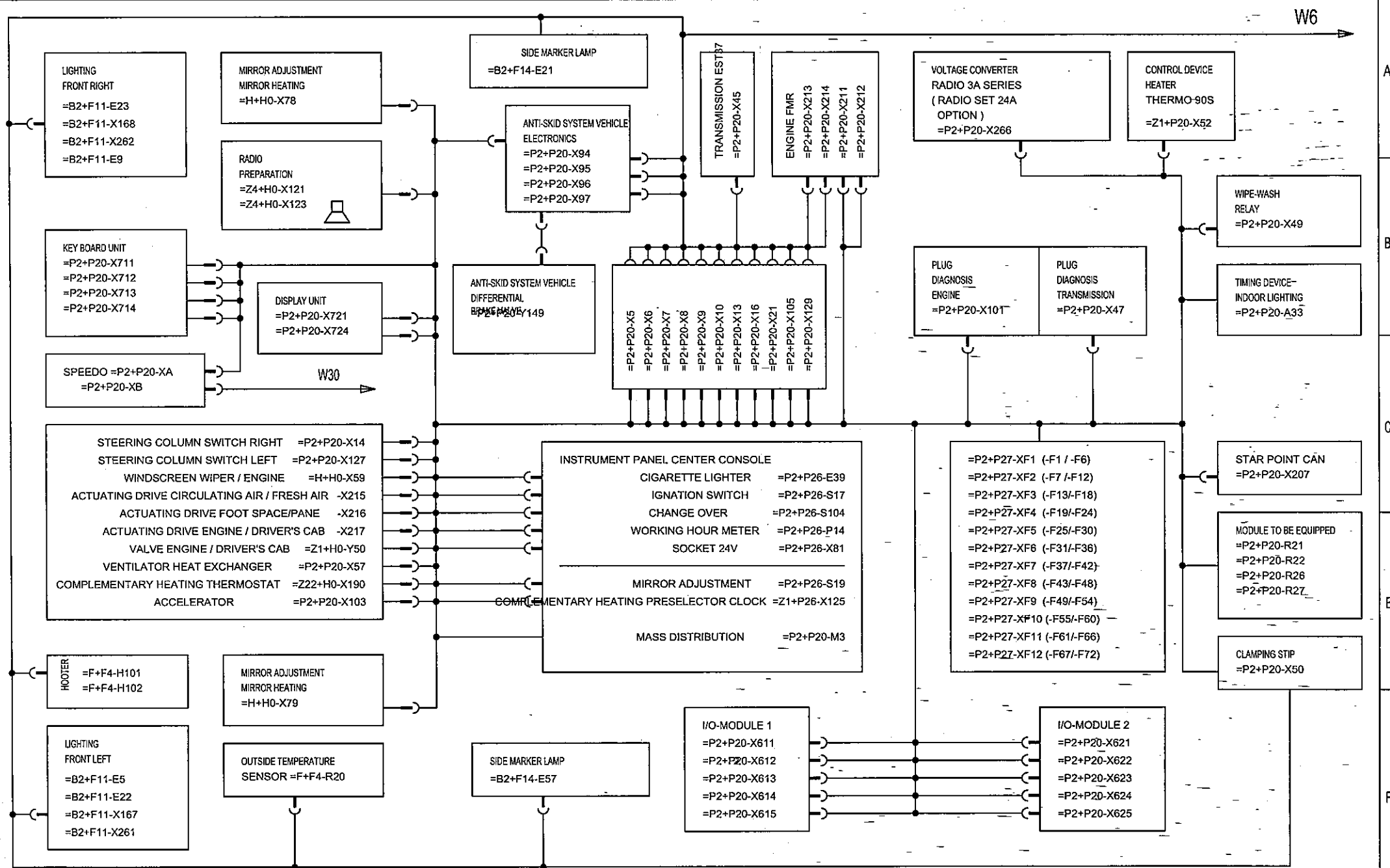
C

E

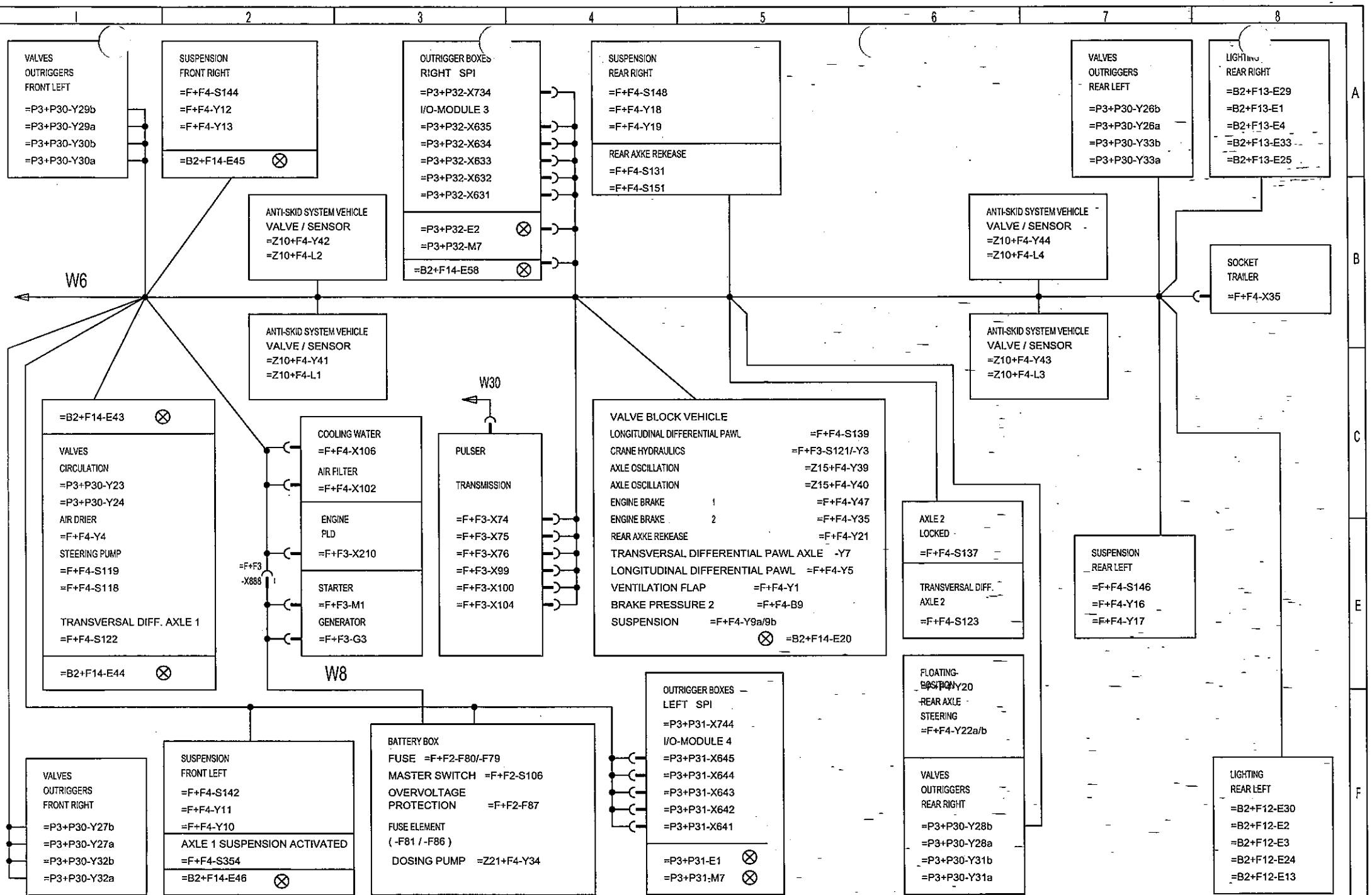
F



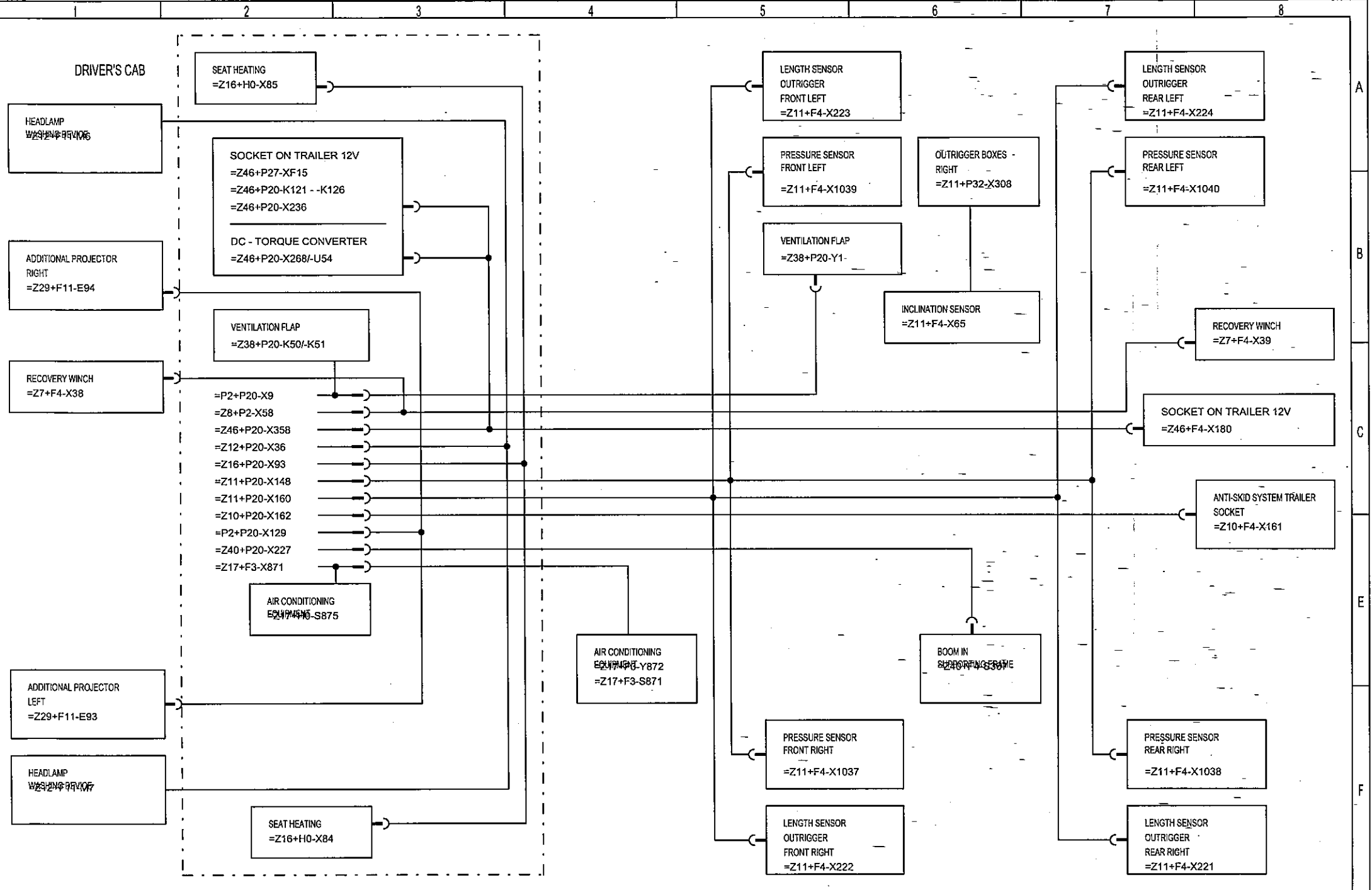
3			Gez.	07.11.06	lwekg0	LIEBHERR WERK	GENERAL OUTLAY LSB	Ident-Nr.	985572708	=	P2
2			Ausgabe	09.11.06	lwekg0	EHINGEN		Zeich-Nr.	3283-920.02.00.001-000	+	P20
1	Änderung	Datum	Name	Datum	Name	Copyright (c)				Blatt	5
										von	123



3			Gez.	07.11.06	fweklg0	LIEBHERR WERK	GENERAL OUTLAY INSTALLATION DRIVER'S CAB	Ident-Nr.	985572708	P2
2			Ausgabe	09.11.06	fweklg0	EN		Zeich-Nr.	3283-920.02.00.001-000	P20
1						Copyright (c)				6
	Änderung	Datum	Name	Datum	Name					423



3			Gez.	07.11.06	lweklg0	LIEBHERR WERK	GENERAL OUTLAY INSTALLATION VEHICLE	Ident-Nr.	985572708	=	P2
2			Ausgabe	09.11.06	lweklg0	EHINGEN		Zeich-Nr.	3283-920.02.00.001-000	+	P20
1	Änderung	Datum	Name	Datum	Name	Copyright (c)				Batt	7
										ver.	123



3			Gez.	07.11.06	lweklg0	LIEBHERR WERK	GENERAL OUTLAY INSTALLATION OPTION	Ident-Nr.	985572708	=	P2
2			Ausgabe	09.11.06	lweklg0	BEN		Zeich-Nr.	3283-920.02.00.001-000		P20
1											8
	Änderung	Datum	Name	Datum	Name	Copyright (c)				von	123







FUSE	SHEET	FUNCTION	BMK
-F31 / 20A 38.1	HEADLAMP WASHING DEVICE		-AF6
-F32 / 10A 38.2	ADDITIONAL PROJECTOR		-AF6
-F33 / ..A 38.2	RESERVE		-AF6
-F34 / ..A 38.3	RESERVE		-AF6
-F35 / ..A 38.3	RESERVE		-AF6
-F36 / ..A 38.4	RESERVE		-AF6
-F37 / 10A 38.4	AIR DRIER INTERIOR LIGHTING, TACHOGRAPH PRESETTING DIAL		-AF7
-F38 / 10A 38.5	WINDSCREEN WIPER HOOPER CAMERA WASHING PUMP		-AF7
-F39 / 10A 38.5	FUNCTION CHECK-BACK SIGNAL TANK SENSOR		-AF7
-F40 / ..A 38.6	RESERVE		-AF7
-F41 / 10A 38.6	MOTOR CONTROL FMR MOTOR CONTROL PLD		-AF7
-F42 / 10A 38.7	ENGINE DIAGNOSIS ENGINE ADAPT. MODULE GENERATOR		-AF7
-F43 / 10A 38.4	TRANSMISSION		-AF8
-F44 / 10A 38.5	I/O-MODULE 1 DIGITAL OUTPUTS		-AF8
-F45 / 10A 38.5	I/O-MODULE 2 DIGITAL OUTPUTS IGNITION ON SUPERSTR./CARRIER		-AF8
-F46 / 15A 38.6	I/O-MODULE 1 ANALOG OUTPUTS		-AF8
-F47 / 15A 38.6	I/O-MODULE 3/4 DIGITAL QUTPUTS, I/O-MODULE 3/4 ANALOG OUTPUTS		-AF8
-F48 / 10A 38.7	I/O-MODULE 3/4 POWER PACK, PROGRAMMING LSB, CONTROL		-AF8
-F49 / 5A 39.1	BACK UP CAMERA ANTI-SKID SYSTEM VEHICLE/TRAILER		-AF9
-F50 / 10A 39.2	KEY BOARD UNIT, AXLE OSCILLATION, ABV/ASR TERRAIN		-AF9
-F51 / ..A 39.2	RESERVE		-AF9
-F52 / 15A 39.3	I/O-MODULE 2 ANALOG OUTPUTS		-AF9
-F53 / 5A 39.3	I/O-MODULE 2 IGNITION ON SUPERSTR.		-AF9
-F54 / 5A 39.4	I/O-MODULE 2 IGNITION ON CARRIER		-AF9
-F55 / 15A 39.1	LIGHTING OUTRIGGERS AIR CONDITIONING EQUIPMENT COUPLING COMPRESSOR ( SUPPLY )		-AF10
-F56 / 10A 39.2	VOLTAGE CONVERTER		-AF10
-F57 / ..A 39.2	RESERVE		-AF10
-F58 / 10A 39.3	RECOVERY WINCH		-AF10
-F59 / 10A 39.3	RADIO (12V) , MULTIMEDIA INTERFACE		-AF10
-F60 / 10A 39.4	RADIO (12V) , SOCKET (12V)		-AF10

A  
B  
C  
E  
F

FUSE	SHEET	FUNCTION	BMK	
-F73 / 10A 35.5 CHARGING SET -F74 / 10A 35.6 CHARGING SET -F75 / 10A 35.6 CHARGING SET -F76 / 10A 35.7 RESERVE -F77 / 10A 35.7 RESERVE -F78 / 10A 35.8 RESERVE			-AF13 -AF13 -AF13 -AF13 -AF13 -AF13	

A

B

C

E

F

3		Gez.	09.11.06	lweklg0	LIEBHERR WERK	FUSE GROUPING	Ident-Nr.	985572708	= P2
2		Ausgabe	09.11.06	lweklg0	GEN		Zeich-Nr.	3283-920.02.00.001-000	P20
1	Änderung	Datum	Datum	Name	Copyright (c)				12
									-123



E//A	SHEET	FUNCTION	TYPE	PLUG
E.E2.0 36.3	IGNATION SWITCH 50 UW		E=0...10V,4...20mA	-X622:17
E.E2.1 36.5	IGNATION SWITCH 50 OW		E=0...10V,4...20mA	-X622:15
E.E2.2 61.2	ACKNOWLEDGEMENT EDDY CURRENT BRAKE		E=0...10V,4...20mA	-X622:13
E.E2.3 60.6	CRANE HYDRAULICS ON CHECK-BACK SIGNAL		E=0...10V,4...20mA	-X622:11
E.E2.4 66.3	COMPRESSED-AIR RESERVE I SENSOR		E=0...10V	-X622:9
E.E2.5 66.4	COMPRESSED-AIR RESERVE II SENSOR		E=0...10V	-X622:7
E.E2.6 66.6	COMPRESSED-AIR RESERVE III SENSOR		E=0...10V	-X622:5
E.E2.7 60.7	TANK CONTENTS SENSOR SUPERSTRUCTURE		E=0...10V	-X622:3
E.S2.4 66.4	COMPRESSED-AIR RESERVE I SENSOR		A=10mA	-X622:10
E.S2.5 66.5	COMPRESSED-AIR RESERVE II SENSOR		A=10mA	-X622:8
E.S2.6 66.7	COMPRESSED-AIR RESERVE III SENSOR		A=10mA	-X622:6
E.S2.7 60.7	TANK CONTENTS SENSOR SUPERSTRUCTURE		A=10mA	-X622:4
E.DE2.0 36.4	IGNATION SWITCH 15 UW / OW		E=HIGH>4V/LOW<2V	-X622:18
E.DE2.1 36.1	IGNATION SWITCH 15 UW		E=HIGH>4V/LOW<2V	-X622:16
E.DE2.2 36.6	IGNATION SWITCH 15 OW		E=HIGH>4V/LOW<2V	-X622:14
E.DE2.3			E=HIGH>4V/LOW<2V	-X622:12
E.VCCEA2.1				-X621:11
E.VCCEA2.2 42.8	E.DEA2.0 / 1 / 2 / 3 / 4 / 5 / 6 / 7			-X621:9
E.DEA2.0			E=HIGH>4V/LOW<2V(A=24V/2A)	-X623:17
E.DEA2.1 60.4	CHANGE-OVER VALVE CARRIER		E=HIGH>4V/LOW<2V(A=24V/2A)	-X623:15
E.DEA2.2 56.4	LEVER EDDY CURRENT BRAKE		E=HIGH>4V/LOW<2V(A=24V/2A)	-X623:13
E.DEA2.3 70.2	LOCKED VALVE		E=HIGH>4V/LOW<2V(A=24V/2A)	-X623:11
E.DEA2.4 70.3	SUSPENSION ACTIVATED VALVE		E=HIGH>4V/LOW<2V(A=24V/2A)	-X623:9
E.DEA2.5 69.3	TRASV.DIFF.AXLES 1+2 VALVE		E=HIGH>4V/LOW<2V(A=24V/2A)	-X623:7
E.DEA2.6 69.4	ACTIVATION AXLE 1 VALVE		E=HIGH>4V/LOW<2V(A=24V/2A)	-X623:5
E.DEA2.7			E=HIGH>4V/LOW<2V(A=24V/2A)	-X623:3
E.VCCA2.0 42.7	E.A2.0 / 1 / 2 / 3			-X621:1
E.VCCA2.1				-X621:3
E.VCCA2.2				-X621:5
E.VCCA2.3				-X621:7
E.A2.0 60.3	CHANGE-OVER VALVE SUPERSTRUCTURE		A=24V/8A	-X623:18
E.A2.1 60.5	CRANE HYDRAULICS VALVE		A=24V/8A	-X623:16
E.A2.2 62.3	STEERING MOTOR LEFT SUPERSTRUCTURE		A=24V/8A	-X623:14
E.A2.3 62.3	STEERING MOTOR RIGHT SUPERSTRUCTURE		A=24V/8A	-X623:12
E.GNDMESS2.1 62.4	CURRENT MEASUREMENT		E=0...10A	-X621:18

A  
B  
C  
E  
F

E/WA	SHEET	FUNCTION	TYPE	PLUG
E.E3.0 E.E3.1 E.E3.2 E.E3.3  E.E3.4 E.E3.5 102.6 E.E3.6 102.7 E.E3.7  E.S3.4 E.S3.5 E.S3.6 E.S3.7		SWITCH ON SUPPORTING SHIELD, REAR RECOVERY WINCH	E=0...10V,4...20mA E=0...10V,4...20mA E=0...10V,4...20mA E=0...10V,4...20mA  E=0...10V E=0...10V E=0...10V E=0...10V  A=10mA A=10mA A=10mA A=10mA	-X632:17 -X632:15 -X632:13 -X632:11  -X632:9 -X632:7 -X632:5 -X632:3  -X632:10 -X632:8 -X632:6 -X632:4
E.DE3.0 E.DE3.1 E.DE3.2 E.DE3.3	69.7 69.5 69.6 44.5	ACTIVATION AXLE 1 CHECK-BACK SIGNAL TRANSV. DIFF AXLE 1 CHECK-BACK SIGNAL TRANSV. DIFF AXLE 2 CHECK-BACK SIGNAL CODING CODE -	E=HIGH>4V/LOW<2V E=HIGH>4V/LOW<2V E=HIGH>4V/LOW<2V E=HIGH>4V/LOW<2V	-X632:18 -X632:16 -X632:14 -X632:12
E.VCCEA3.1 E.VCCEA3.2  E.DEA3.0 E.DEA3.1 E.DEA3.2 E.DEA3.3 E.DEA3.4 E.DEA3.5 E.DEA3.6 E.DEA3.7	42.2  74.2 74.3 74.3 74.4 74.5 74.6 74.7 74.7	E.DEA3.0/1/2/3/4/5/6/7  SLIDING BEAM F.R. EXTEND SLIDING BEAM F.R. RETRACT SUPPORT F.R. DOWN SUPPORT F.R. UP SLIDING BEAM R.R. EXTEND SLIDING BEAM R.R. RETRACT SUPPORT R.R. DOWN SUPPORT R.R. UP	  E=HIGH>4V/LOW<2V(A=24V/2A) E=HIGH>4V/LOW<2V(A=24V/2A) E=HIGH>4V/LOW<2V(A=24V/2A) E=HIGH>4V/LOW<2V(A=24V/2A) E=HIGH>4V/LOW<2V(A=24V/2A) E=HIGH>4V/LOW<2V(A=24V/2A) E=HIGH>4V/LOW<2V(A=24V/2A) E=HIGH>4V/LOW<2V(A=24V/2A)	-X631:11 -X631:9  -X633:17 -X633:15 -X633:13 -X633:11 -X633:9 -X633:7 -X633:5 -X633:3
E.VCCA3.0 E.VCCA3.1 E.VCCA3.2 E.VCCA3.3  E.A3.0 E.A3.1 E.A3.2 E.A3.3	42.1    75.2 75.3 75.3 75.3	E.A3.0/1/2/3    CIRCULATION VALVE 1 CIRCULATION VALVE 2 CIRCULATION VALVE 3	    A=24V/8A A=24V/8A A=24V/8A A=24V/8A	-X631:1 -X631:3 -X631:5 -X631:7  -X633:18 -X633:16 -X633:14 -X633:12
E.GNDMESS3.1			E=0...10A	-X631:18

A  
B  
C  
E  
F

3			Gez.	09.11.06	lweklg0	LIEBHERR WERK	I/O-MODULE 3 DISPOSITION	Kont-Nr.	985572708	=	P2
2			Ausgabe	09.11.06	lweklg0	EHINGEN				+	P20
1								Zeich-Nr.	3283-920.02.00.001-000	Stat	15
	Änderung	Datum	Name	Datum	Name	Copyright (c)			von	123	





E/A	SHEET	FUNCTION	TYPE	PLUG
B.E1.0	89.6	AUXILIARY HEATING ON CHECK-BACK SIGNAL	E=24V	-X711:9
B.E1.1	89.6	AUXILIARY HEATING VENTILATOR AFTER-RUNNING	E=24V	-X711:7
B.E1.2			E=24V	-X711:5
B.E1.3	89.4	AUXILIARY HEATING PRESETTING DIAL	E=24V	-X711:3
B.E1.4	92.5	AIR-CONDITIONER PUSH-BUTTON	E=24V	-X712:8
B.E1.5	77.8	HOOTER	E=24V	-X712:6
B.E1.6	70.4	AXLE 2 LOCKED CHECK-BACK SIGNAL	E=24V	-X712:4
B.30F1.10	41.6	B.A.1.0/1/2/3/4/5/ 6/7/11	24V	-X713:4
B.A1.0	88.4	HEATING CIRCULATING/FRESH AIR	A=1A	-X711:18
B.A1.1	88.4	HEATING CIRCULATING/FRESH AIR	A=1A	-X711:16
B.A1.2	88.5	HEATING FOOT SPACE/ FRONT PANE	A=1A	-X711:14
B.A1.3	88.6	HEATING FOOT SPACE/ FRONT PANE	A=1A	-X711:12
B.A1.4	88.7	HEATING ENGINE/DRIVING CAB	A=1A	-X711:10
B.A1.5	88.8	HEATING ENGINE/DRIVING CAB	A=1A	-X711:8
B.A1.6			A=1A	-X711:6
B.A1.7			A=1A	-X711:4
B.A1.11	89.7	AUXILIARY HEATING ON	A=2A	-X711:11
B.15F1.1	41.5	B.A.1.12 / 13 / 14	24V	-X712:1
B.A1.12	92.5	AIR-CONDITIONER COUPLING COMPRESS.	A=2A	-X712:18
B.A1.14			A=2A	-X712:14
B.15F1.12	41.8	B.A.1.15 / 16 / 20	24V	-X713:1
B.A1.15	70.7	AXLE OSCILLATION VALVE	A=2A	-X712:12
B.A1.16			A=1A	-X712:10
B.A1.20	89.3	AUXILIARY HEATING VALVE MOTOR	A=1A	-X712:11
B.30F1.11	41.7	B.A.1.17 / 18 / 19 / VCCBAT1.1	24V	-X713:3
B.A1.17	85.5	MIRROR HEATING	A=8A	-X712:17
B.A1.18	97.3	HEATING DRIVER'S SEAT	A=8A	-X712:15
B.A1.19	97.5	HEAT. CO-DRIVER'S SEAT	A=8A	-X712:13
B.VCCBAT1.1	41.3	SPECIAL FUNCTION BATTERY +	A=2A	-X711:1

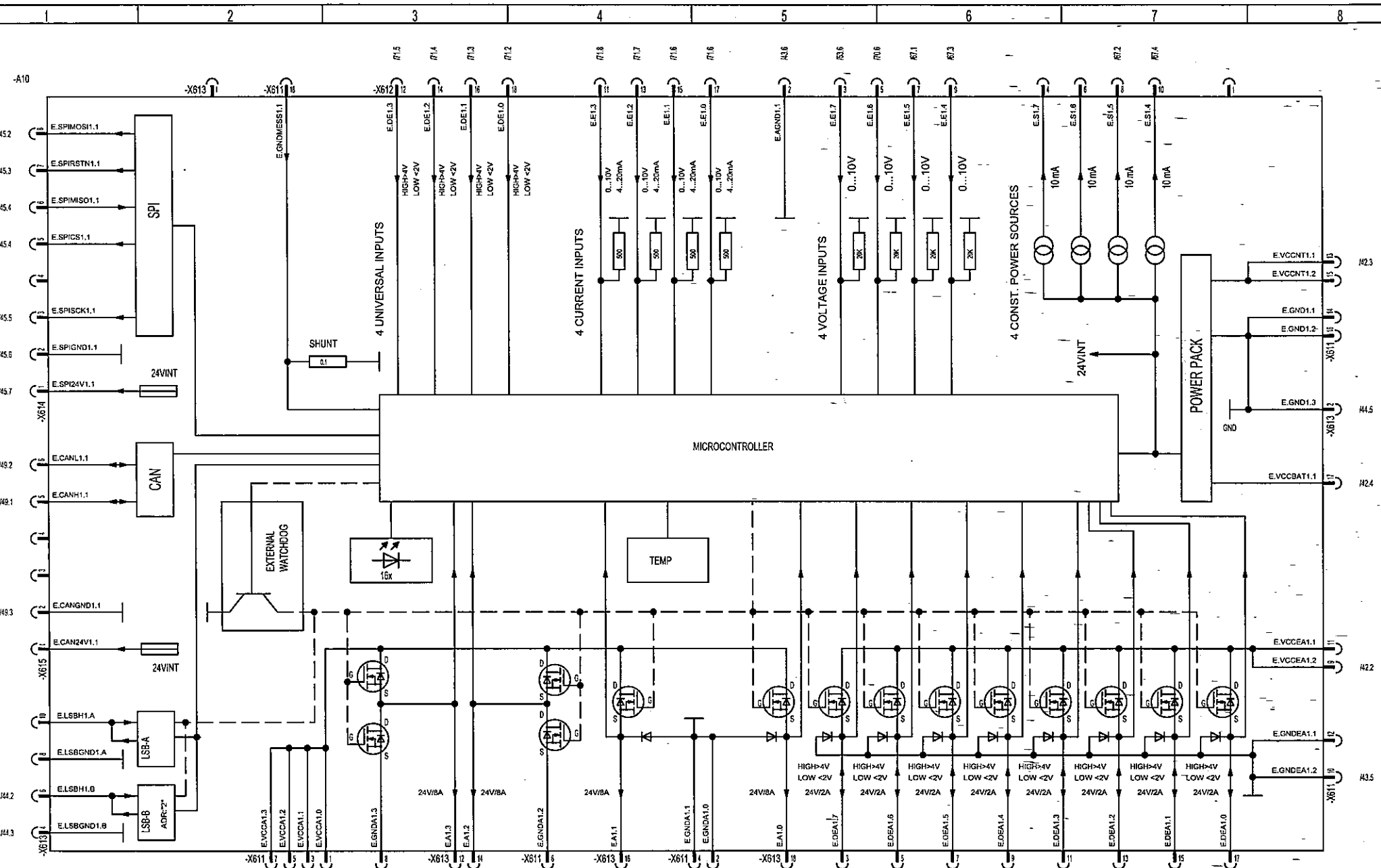
A  
B  
C  
E  
F

3			Gez.	09.11.06	lwekig0	LIEBHERR WERK	KEY BOARD UNIT DISPOSITION	Mont-Nr.	985572708	=	P2	
2			Ausgabe	09.11.06	lwekig0	EHINGEN		TYPE C	Zeich-Nr.	3283-920.02.00.001-000	+	P20
1	Änderung	Datum	Name	Datum	Name	Copyright (c)					Batt	17
										von	123	

E//A	SHEET	FUNCTION	TYPE	PLUG
B.30F1.2 B.A1.21	41.4 B.A1.21 / 22 / 23		24V A=15A	-X712:3 -X712:9
B.A1.22 B.A1.23	80.6 77.8	REVERSING LAMPS WARNING SIGNAL HOOTER	A=15A A=15A	-X712:7 -X712:5
B.30F1.9 B.A1.8 B.A1.9 B.A1.10	89.2 88.1 88.2 88.3	B.A1.8 / 9 / 10 VENTILATOR STEP 1 VENTILATOR STEP 2 VENTILATOR STEP 3	24V A=15A A=15A A=15A	-X713:6 -X711:17 -X711:15 -X711:13
B.15F1.1 B.A1.13	41.5 84.5	B.A1.12 / 13 / 14 LIGHTING SLIDING BEAMS	24V A=15A	-X712:1 -X712:16
B.15F1.3 B.A1.24	76.6 76.6	LIGHT LIGHT	24V A=15A	-X713:18 -X713:17
B.30F1.4 B.A1.25	76.6 76.6	PARKING LIGHT PARKING LIGHT	24V A=15A	-X713:16 -X713:15
B.15F1.5 B.A1.26	83.4 83.4	FOG LAMP FOG LAMP	24V A=15A	-X713:14 -X713:13
B.15F1.6 B.A1.27	83.6 83.6	REAR FOG LAMP REAR FOG LAMP	24V A=15A	-X713:12 -X713:11
B.30F1.7 B.A1.28	86.8 86.8	WARNING BEACON WARNING BEACON	24V A=15A	-X713:10 -X713:9
B.30F1.8 B.A1.29 B.A1.30	77.3 77.3 77.4	B.A1.29 / 30 DIRECTION INDICATOR LEFT DIRECTION INDICATOR RIGHT	24V A=15A A=15A	-X713:8 -X713:7 -X713:5

A  
B  
C  
E  
F





CROSS REFERENCES WHICH REFER TO THIS SHEET ARE NOT PATH-RELATED!

This is the cut pages sample. Download all 258 page(s) at: [ManualPlace.com](http://ManualPlace.com)

3		Gez.	07.11.06	lweKlg0	LIEBHERR WERK EN	I/O-MODULE 1	Ident-Nr.	985572708	P2
2		Ausgabe	09.11.06	lweKlg0					
1		Änderung			Copyright (c)				20
		Datum							123