

Operation & Maintenance Manual

WB91R-2 WB93R-2 *ADVANCE*

BACKHOE-LOADER

SERIAL NUMBER

WB91R-2 91F20250 and up

WB93R-2 93F25184 and up



WARNING

Unsafe use of this machine may cause serious injury or death. Operators and maintenance personnel must read this manual before operating or maintaining this machine.

This manual should be kept inside the cab for reference and periodically reviewed by all personnel who will come into contact with the machine.



1.1 FOREWORD

- This manual has been carried out by Komatsu Utility in order to supply their customers with all the necessary information on the machine and the safety regulations related to it, together with the use and maintenance instructions that enable the operator to exploit the capacity of the machine with optimal results and to keep the machine efficient over time.
- The operation manual, together with the spare parts catalogue, is an integral part of the machine and must accompany it, even when it is resold, until its final disposal.
- The manual must be handled with the greatest care and always kept on board the machine, so that it can be consulted at any moment; it must be placed in the appropriate compartment behind the seat, where also the ownership documents and the logbook are usually kept (see “3.5.10 TECHNICAL DOCUMENTATION”).
- This manual must be given to the persons who have to use the machine and carry out the routine maintenance operations; they must read the contents carefully more than once, in such a way as to clearly understand what are the correct operating conditions and the dangerous conditions that must be avoided.
In case of loss or damage, request a new copy to Komatsu Utility or your Komatsu Utility Dealer.
- The illustrations contained in this manual may represent machine configurations available upon request. Komatsu Utility machines are constantly improved in order to increase their efficiency and reliability; this manual sums up all the information regarding the most recent techniques applied at the moment in which the machine is marketed.
For any further and/or updated information, contact your Komatsu Utility Dealer.
- Punctual periodic annotations regarding the maintenance operations that have been carried out are important to have a clear prospect of the situation and to know exactly what has been done and what has to be done after the next maintenance interval. Therefore, it is advisable to consult the hour meter and the maintenance plan frequently.
- Over the years Komatsu Utility Dealers have gathered considerable experience in customer service. If more information is needed, do not hesitate to contact your Komatsu Utility Dealer: he always knows how to get the best performance from the machine, he can suggest the use of the equipment that is most suitable for specific needs and can provide the technical assistance necessary for any change that may be required to conform the machine to the safety standards and traffic rules.
Furthermore, Komatsu Utility Dealers also ensure their assistance for the supply of Komatsu Utility genuine spare parts, which alone guarantee safety and interchangeability.
- The table included in this manual must be filled in with the machine data, which are the data that must always be indicated to the Dealer when requiring assistance and ordering spare parts.



CAUTION

- **The incorrect use of the machine and inappropriate maintenance operations may cause serious injuries and even death.**
 - **Operators and maintenance personnel must carefully read this manual before using the machine or performing maintenance operations.**
 - **Any serious accident that may occur during the use of the machine or during maintenance operations is due to failure to comply with the instructions given herein.**
 - **The procedures and precautions described in this manual are valid for application to the machine only when it is used correctly.**
If the machine is used for any purpose or in any way other than those described herein, the operator shall be responsible for his own safety and for the safety of any other person involved.
-

1.2 INFORMATION ON SAFETY

Many accidents are caused by insufficient knowledge of and failure to comply with the safety regulations prescribed for the maintenance operations that must be performed on the machine.

In order to avoid accidents, before starting work and before carrying out any maintenance operation, carefully read and be sure to understand all the information and warnings contained in this manual and given on the plates applied onto the machine, so that you can follow the instructions without making mistakes.

To identify the messages regarding safety that are included in this manual and written on the machine plates, the following words have been used.



DANGER

- This word is used in the safety warnings in the manual and on the plates when the situation is dangerous and it may possibly result in serious injuries or even death.

These messages describe the safety precautions to be taken in order to avoid any risk. Non-compliance with these instructions may also result in serious damage to the machine.



CAUTION

- This word is used in the safety warnings in the manual and on the plates to signal risks that may cause moderate damage or injuries.

The message can be used even to indicate the risk of damage to the machine only.



IMPORTANT

- This word is used when precautions are indicated, which must be taken to avoid actions that may shorten the life of the machine.
-

Komatsu Utility cannot reasonably predict every circumstance that might involve a potential hazard during the operation or maintenance of the machine; for this reason, the safety messages included in this manual and applied onto the machine may not include all possible safety precautions.

If all the procedures and operations prescribed for this machine are kept to, you can be sure that the operator and the persons in the vicinity can work in total safety, with no risk of damaging the machine. In case of doubt regarding the safety measures necessary for some procedures, contact Komatsu Utility or your local Dealer.



DANGER

- Before starting any maintenance operation, position the machine on firm and level ground, engage the safety locks of the equipment and of the controls, stop the engine and apply the parking brake.
-



DANGER

- To make the information clearer, some illustrations in this manual represent the machine without safety guards. Do not use the machine without guards and do not start the engine when the engine protection casing is open, if this is not expressly prescribed for some specific maintenance operations.
-

 **DANGER**

- It is strictly forbidden to modify the setting of the hydraulic system safety valves; Komatsu Utility cannot be held liable for any damage to persons, property or the machine, if this has been tampered with by modifying the standard setting of the hydraulic system.
-

 **DANGER**

- Before carrying out any electrical welding, disconnect the battery and the alternator (See “2.8.13 PRECAUTIONS CONCERNING THE BATTERY AND THE ALTERNATOR”).
-

 **DANGER**

- Install only authorized additional equipment (See “6.1 AUTHORIZED OPTIONAL EQUIPMENT”).
-

 **DANGER**

- The machine can travel on roads only if provided with homologated equipment; before travelling on roads, make sure that the equipment with which the machine is provided is homologated and that the safety locks are correctly.
-

1.3 INTRODUCTION

1.3.1 INTENDED USES

The Komatsu Utility BACKHOE LOADERS described in this manual have been designed and constructed to be used mainly for the following functions:

- LOADER
- EXCAVATOR

Through the installation of optional equipment, the machine can also be used for the following applications:

- HANDLING OF MATERIALS (4IN1 BUCKET - PALLET FORKS)
- SNOWPLOUGH (ANGLED DOZER BLADE - SNOWPLOUGH)
- DEMOLITION (HAND HAMMER - HAMMER ON THE BACKHOE)
- DITCH CLEANING AND DIGGING (SPECIAL BUCKETS)

1.3.2 IMPROPER OR UNAUTHORIZED USES



CAUTION

- **This paragraph describes some of the improper or unauthorized uses of the machine; since it is impossible to predict all the possible improper uses, if the machine happens to be used for particular applications, contact your Komatsu Utility Dealer before carrying out the work.**
-



IMPORTANT

- **The instructions regarding the authorized optional equipment are given in the relevant operation and maintenance manuals; if the equipment is supplied by Komatsu Utility, these publications are enclosed to this manual.**
 - **The instructions regarding the assembly of the authorized equipment, the controls requiring special arrangement on the machine and the hydraulic couplings necessary for the operation of the equipment are grouped in the final section of this manual.**
-

Komatsu Utility backhoe loaders are constructed exclusively for the handling, excavation and treatment of inert materials; therefore, the following uses are absolutely forbidden:

- USE OF THE MACHINE BY MINORS OR INEXPERIENCED PERSONS.
- USE OF THE MACHINE FOR LIFTING PERSONS OR OBJECTS.
- TRANSPORTATION OF PERSONS even if they are in the operator's cab.
- TRANSPORTATION OF CONTAINERS with fluids, flammable fluids, loose material, without the appropriate slinging equipment.
- TRANSPORTATION AND LIFTING (EVEN IF IN EXCEPTIONAL CASES) OF EQUIPMENT OR MATERIALS THAT PROTRUDE FROM THE BUCKET OR ARE NOT SECURED TO THE BUCKET BY MEANS OF ROPES OR CHAINS.
- USE OF THE BUCKET FOR DRIVING OR EXTRACTING PILES.
- USE OF THE MACHINE FOR TOWING DAMAGED VEHICLES ON ROADS.
- USE OF THE MACHINE FOR LIFTING DAMAGED VEHICLES.

1.3.3 MAIN CHARACTERISTICS

- Simple and easy operation.
- Servo-assisted steering with priority hydraulic system.
- 4-gear mechanical gearshift and transmission with hydraulic converter; reversal controlled by a lever positioned under the steering wheel.
- Loader control through a single lever ensuring also combined movements that can be modulated proportionally and continually.
- Backhoe controls with two levers ensuring also combined movements that can be modulated proportionally and continually.
- Complete series of instruments visible from the two operating positions (loader or backhoe).
- Separate accelerator controls for the two operating positions.
- Foot brake control.
- Easy maintenance with simplified intervals.

1.3.4 RUNNING-IN

Every machine is scrupulously adjusted and tested before delivery.

A new machine, however, must be used carefully for the first 100 hours, in order to ensure proper running-in of the various components.

If the machine is subjected to excessive work load at the beginning of operation, its potential yield and its functionality will be shortly and untimely reduced.

Every new machine must be used carefully, paying special attention to the following indications:

- After the start, let the engine idle for 5 minutes, in such a way as to warm it up gradually before actual operation.
- Avoid operating the machine with the limit loads allowed or at high speed.
- Avoid abrupt starts or accelerations, useless sudden decelerations and abrupt reversals.
- After the first 250 hours, carry out the following operations, in addition to those to be performed every 250 hours:
 - 1 - Change the hydraulic transmission oil and filter.
 - 2 - Change the differential unit oil (front and rear axle).
 - 3 - Change the oil in the final reduction gears (front and rear axle).
 - 4 - Check and adjust the engine valve clearance.
 - 5 - Change the hydraulic circuit oil filter.

SYNTHETIC BIODEGRADABLE OIL TYPE HEES

On machines in which the synthetic biodegradable oil type HEES is used, the following operations are to be performed besides the standard maintenance operations:

- After the first 50 hours of operation, change the hydraulic circuit drain filter.
- After the first 500 hours of operation, change the hydraulic circuit oil.



IMPORTANT

- **When changing the oil filters (cartridges), check their inner part to make sure that there are no deposits.**
If considerable deposits are observed, find out what may have caused them before starting the machine.
 - **The number of operation hours is indicated by the hour meter.**
-

1.4 PRODUCT IDENTIFICATION

The Komatsu Utility backhoe loader and its main components are identified by serial numbers stamped on the identification plates.

The serial number and the identification numbers of the components are the only numbers that must be indicated to the Dealer when requiring assistance and ordering spare parts.

1.4.1 MACHINE SERIAL NUMBER

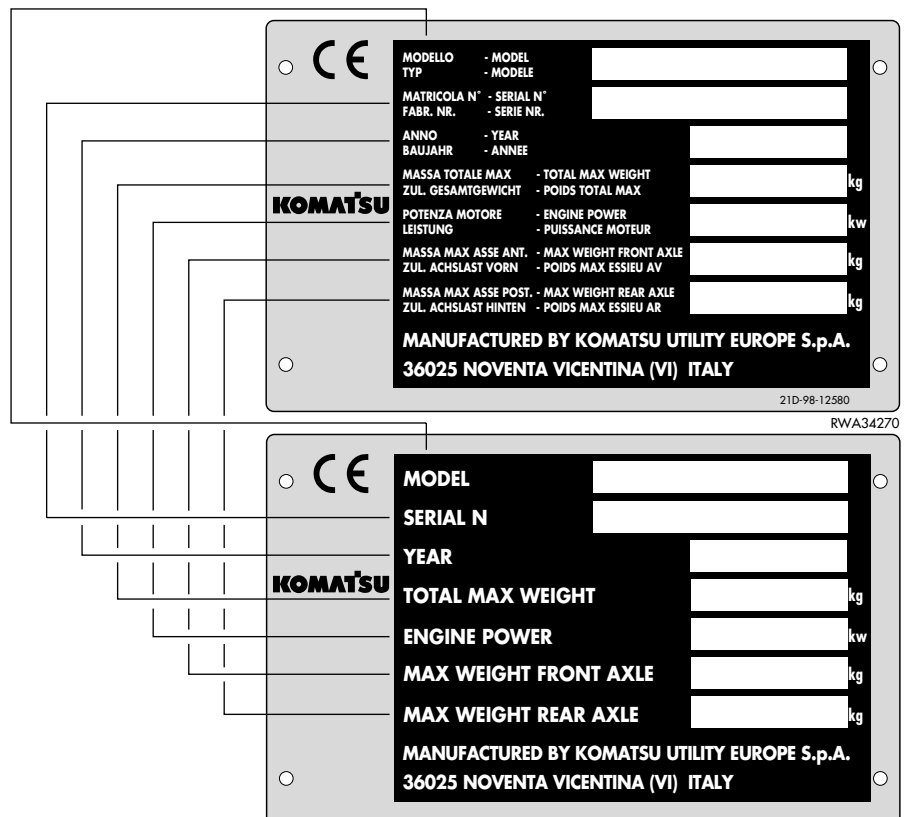
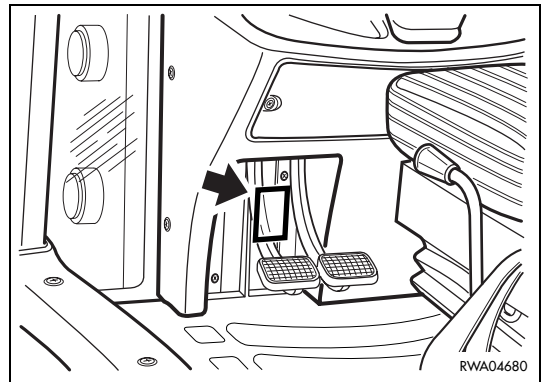
The machine serial number is stamped on the front part of the main frame, on the right side.



1.4.2 MACHINE IDENTIFICATION PLATE

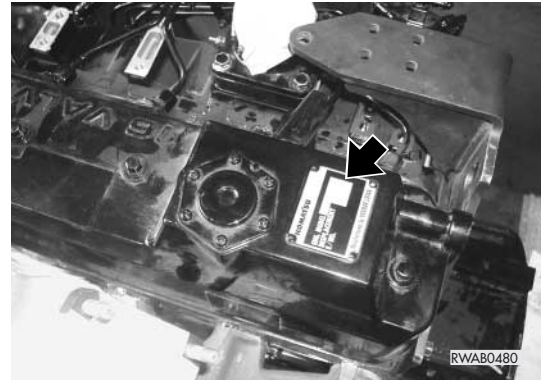
The Komatsu Utility backhoe loaders described in this manual are provided with the CE mark, which certifies that they are in compliance with the CE harmonized standards.

The plate with the mark is applied inside the operator's cab, on the left vertical wall of the frame, in correspondence with the brake pedals.

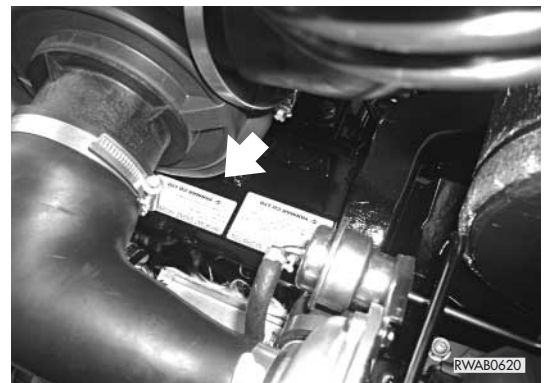


1.4.3 ENGINE SERIAL NUMBER AND EXHAUST GAS EMISSION PLATE

The engine serial number is stamped on the plate positioned on the rear side of the tappet cover.

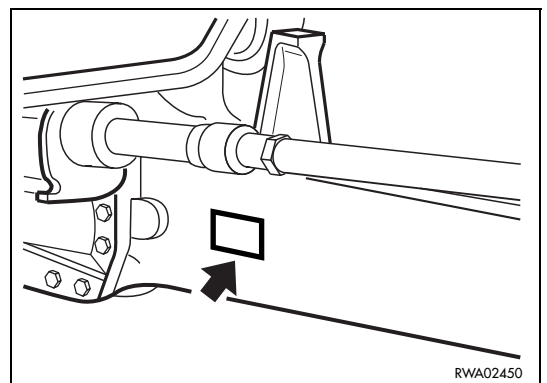


The plate regarding the exhaust emission regulations is applied to the front side of the tappet cover.



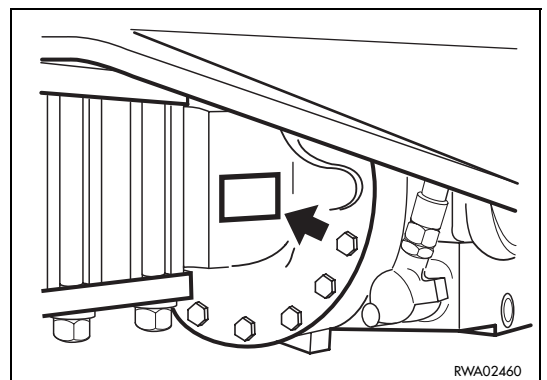
1.4.4 FRONT AXLE SERIAL NUMBER

The serial number of the front axle is stamped on the plate positioned on the right side of the axle body.



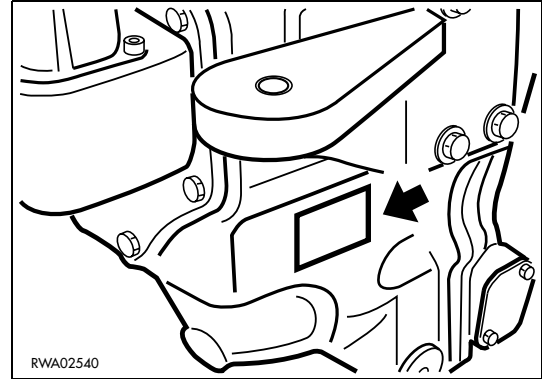
1.4.5 REAR AXLE SERIAL NUMBER

The serial number of the rear axle is stamped on the plate positioned on the right side of the axle body.



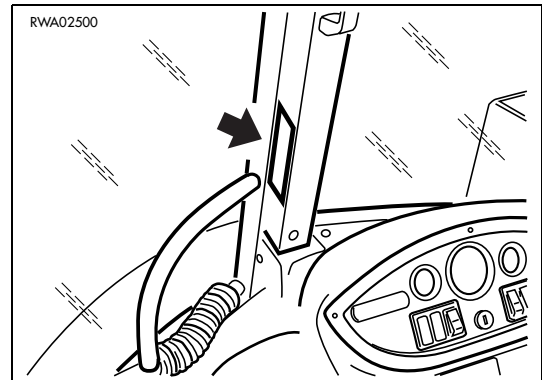
1.4.6 TRANSMISSION SERIAL NUMBER

The transmission serial number is stamped on the plate positioned on the right side of the transmission case.



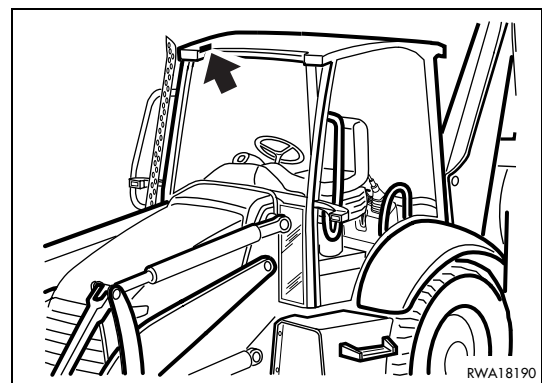
1.4.7 CAB SERIAL NUMBER

The cab serial number is stamped on the plate positioned on the right center pillar.



1.4.8 CANOPY SERIAL NUMBER (if provided)

The serial number is stamped on the plate positioned inside the canopy, on the front right part.



1.4.9 SERIAL NUMBERS AND DEALER'S ADDRESS

Machine n. _____ Model _____

Engine n. _____

Front axle n. _____

Rear axle n. _____

Transmission n. _____

Cab n. _____

Canopy n. _____

Dealer:

Address: _____

_____ Tel. _____

Person to contact: _____

NOTES: _____

THIS PAGE WAS INTENTIONALLY LEFT EMPTY

TABLE OF CONTENTS

1.1	FOREWORD	1
1.2	INFORMATION ON SAFETY	2
1.3	INTRODUCTION	4
1.3.1	INTENDED USES	4
1.3.2	IMPROPER OR UNAUTHORIZED USES	4
1.3.3	MAIN CHARACTERISTICS	5
1.3.4	RUNNING-IN	5
1.4	PRODUCT IDENTIFICATION	6
1.4.1	MACHINE SERIAL NUMBER	6
1.4.2	MACHINE IDENTIFICATION PLATE	6
1.4.3	ENGINE SERIAL NUMBER AND EXHAUST GAS EMISSION PLATE	7
1.4.4	FRONT AXLE SERIAL NUMBER	7
1.4.5	REAR AXLE SERIAL NUMBER	7
1.4.6	TRANSMISSION SERIAL NUMBER	8
1.4.7	CAB SERIAL NUMBER	8
1.4.8	CANOPY SERIAL NUMBER (if provided)	8
1.4.9	SERIAL NUMBERS AND DEALER'S ADDRESS	9
SAFETY AND ACCIDENT PREVENTION		
2.1	SAFETY, NOISE AND VIBRATION PLATES	20
2.1.1	POSITION OF THE SAFETY PLATES	20
2.1.2	PICTOGRAMS AND RELEVANT MEANINGS	22
2.1.3	POSITION OF THE NOISE PLATES ON MACHINES WITH CAB (model WB91R-2)	26
2.1.4	POSITION OF THE NOISE PLATES ON MACHINES WITH CAB (model WB93R-2)	27
2.1.5	VIBRATIONS TO WHICH THE OPERATOR IS SUBJECTED	28
2.2	GENERAL PRECAUTIONS	29
2.2.1	GENERAL SAFETY RULES	29
2.2.2	SAFETY DEVICES AND GUARDS	29
2.2.3	CLOTHING AND PERSONAL PROTECTION ITEMS	29
2.2.4	UNAUTHORIZED MODIFICATIONS	30
2.2.5	LEAVING THE OPERATOR'S SEAT	30
2.2.6	GETTING ON AND OFF THE MACHINE	31
2.2.7	CHECKING THE REAR-VIEW MIRRORS	31
2.2.8	PREVENTING FIRES DUE TO FUEL AND OIL	31
2.2.9	PREVENTING BURNS	32
2.2.10	PREVENTING DAMAGE DUE TO ASBESTOS POWDER	32
2.2.11	PREVENTING DAMAGE CAUSED BY THE WORK EQUIPMENT	33
2.2.12	FIRE EXTINGUISHERS AND FIRST AID KIT	33
2.2.13	PRECAUTIONS CONCERNING THE CAB STRUCTURE	33
2.2.14	PRECAUTIONS CONCERNING THE EQUIPMENT	33
2.3	PRECAUTIONS TO BE TAKEN BEFORE STARTING THE ENGINE	34
2.3.1	SAFETY ON THE WORK SITE	34
2.3.2	FIRE PREVENTION	34
2.3.3	PRECAUTIONS TO BE TAKEN FOR THE OPERATOR'S CAB	34
2.3.4	ROOM VENTILATION	35
2.3.5	CLEANING WINDOWS, MIRRORS AND LIGHTS - CHECKING THE WINDSHIELD WIPER BLADES AND THE BULBS	35

	Page
2.4 PRECAUTIONS TO BE TAKEN WHEN WORKING	36
2.4.1 STARTING THE ENGINE	36
2.4.2 RULES FOR ROAD TRAVEL	36
2.4.3 CHECKS FOR TRAVELLING IN REVERSE	37
2.4.4 MOVING THE MACHINE	37
2.4.5 WORKING ON SLOPES	38
2.4.6 PREVENTING ELECTROCUTION	39
2.4.7 VISIBILITY	40
2.4.8 WORKING ON ICY OR SNOW-COVERED SURFACES	40
2.4.9 PREVENTING DAMAGE CAUSED BY THE WORK EQUIPMENT	40
2.4.10 WORKING ON LOOSE GROUND	40
2.4.11 PARKING THE MACHINE	41
2.5 TRANSPORTING THE MACHINE ON MOTOR VEHICLES	42
2.5.1 LOADING AND UNLOADING	42
2.5.2 TRANSPORT	42
2.6 BATTERY	43
2.6.1 PREVENTING RISKS THAT MAY BE DUE TO THE BATTERY	43
2.6.2 STARTING WITH BOOSTER CABLES	43
2.7 PRECAUTIONS FOR THE REMOVAL	44
2.8 PRECAUTIONS FOR MAINTENANCE	45
2.8.1 WARNING PLATES	45
2.8.2 TOOLS	45
2.8.3 PERSONNEL	45
2.8.4 EQUIPMENT	46
2.8.5 WORKING UNDER THE MACHINE	46
2.8.6 CLEANING THE MACHINE	46
2.8.7 USE OF THE ENGINE DURING MAINTENANCE OPERATIONS	47
2.8.8 PERIODICAL CHANGE OF THE PARTS THAT ARE CRITICAL FOR SAFETY	47
2.8.9 STOP THE ENGINE BEFORE CARRYING OUT ANY MAINTENANCE OPERATION OR INSPECTION.	48
2.8.10 RULES TO BE FOLLOWED DURING FUEL OR OIL TOPPING UP	49
2.8.11 CHECKING THE COOLANT LEVEL IN THE RADIATOR	49
2.8.12 USING LAMPS	49
2.8.13 PRECAUTIONS CONCERNING THE BATTERY AND THE ALTERNATOR	50
2.8.14 PRECAUTIONS CONCERNING THE STARTER	50
2.8.15 HANDLING HIGH-PRESSURE PIPES	51
2.8.16 PRECAUTIONS TO BE TAKEN WHEN HANDLING HIGH-PRESSURE OIL	51
2.8.17 PRECAUTIONS FOR MAINTENANCE OPERATIONS AT HIGH TEMPERATURES AND HIGH PRESSURE.	51
2.8.18 COOLING FAN AND BELT	52
2.8.19 WASTE MATERIALS	52
2.8.20 PRECAUTIONS TO BE TAKEN WHEN INFLATING TYRES	52
2.8.21 PRECAUTIONS FOR THE INSTALLATION OF THE EXHAUST SYSTEM TAILPIPE	53
2.8.22 PRECAUTIONS FOR THE USE OF THE SYNTHETIC BIODEGRADABLE OIL TYPE HEES.	53

DESCRIPTION AND USE OF THE MACHINE

3.1	SAFETY LOCKS	56
3.1.1	FRONT LOADER LOCKS	56
3.1.2	BACKHOE LOCKS	58
3.2	GENERAL VIEWS	59
3.2.1	FRONT GENERAL VIEW	59
3.2.2	BACKHOE GENERAL VIEW	60
3.2.3	CAB INSIDE GENERAL VIEW	61
3.2.3.1	CAB INSIDE GENERAL VIEW (Standard version)	61
3.2.3.2	CAB INSIDE GENERAL VIEW (Version with servcontrols available on request) .	62
3.3	INSTRUMENTS AND CONTROLS	63
3.3.1	FRONT INSTRUMENTS	63
3.3.2	SIDE INSTRUMENTS	67
3.3.2.1	SIDE INSTRUMENTS (Standard version)	67
3.3.2.2	SIDE INSTRUMENTS (Version with servo controls available on request)	68
3.3.3	PUSH BUTTONS ON THE FRONT LOADER CONTROL LEVER	75
3.3.4	PUSH BUTTON ON THE GEARSHIFT LEVER	75
3.3.5	ELECTRICAL ACCESSORIES	76
3.3.6	MACHINE CONTROLS	77
3.3.6.1	MACHINE CONTROLS (Standard version)	77
3.3.6.2	MACHINE CONTROLS (Version with servo controls available upon request) . . .	78
3.4	FUSES AND RELAYS	106
3.4.1	EQUIPMENT FUSES AND RELAYS	106
3.4.1.1	FUSES	107
3.4.1.2	RELAYS	108
3.4.2	ENGINE FUSES AND RELAYS	108
3.4.2.1	FUSES	109
3.4.2.2	RELAYS	109
3.4.3	SIDE DASHBOARD RELAYS	110
3.4.4	SIDE DASHBOARD RELAYS AND FUSES (Only with servo controls)	110
3.4.4.1	FUSES	110
3.5	GUARDS, CAB AND DRIVER'S SEAT	111
3.5.1	ENGINE HOOD	111
3.5.2	CANOPY (if provided)	111
3.5.3	CAB	112
3.5.4	VENTILATION AND HEATING	115
3.5.5	AIR CONDITIONER (if installed)	116
3.5.6	SEAT	118
3.5.6.1	SEAT (STANDARD)	118
3.5.6.2	SEAT (OPTIONAL)	119
3.5.7	SAFETY BELT	120
3.5.8	FIRE EXTINGUISHER	120
3.5.9	FIRST AID KIT	120
3.5.10	TECHNICAL DOCUMENTATION	120
3.5.11	ADDITIONAL TOOL BOX (if provided)	121
3.6	USE OF THE MACHINE	123
3.6.1	CHECKS BEFORE STARTING THE ENGINE	123
3.6.1.1	VISUAL CHECKS	123
3.6.1.2	DAILY CHECKS	123
3.6.1.3	OPERATIONAL CHECKS	124

	Page
3.6.2	STARTING THE ENGINE 125
3.6.2.1	STARTING WITH WARM ENGINE OR IN TEMPERATE CLIMATES 125
3.6.2.2	STARTING WITH COLD ENGINE OR IN COLD CLIMATES 126
3.6.3	WARMING THE ENGINE 127
3.6.4	HEATING THE HYDRAULIC OIL 127
3.6.5	HOW TO MOVE THE MACHINE 128
3.6.5.1	DIFFERENTIAL LOCKING 129
3.6.5.2	ENGAGING THE FOUR-WHEEL DRIVE 129
3.6.5.3	WORKING ON SLOPES 130
3.6.5.4	MAXIMUM IMMERSION DEPTH 131
3.7	PARKING THE MACHINE 132
3.7.1	PARKING ON LEVEL GROUND 132
3.7.2	PARKING ON SLOPES 133
3.8	STOPPING THE ENGINE 134
3.9	TRANSPORTING THE MACHINE ON MOTOR VEHICLES 135
3.9.1	LOADING AND UNLOADING THE MACHINE 135
3.9.2	TRANSPORT 136
3.10	PRECAUTIONS TO BE TAKEN IN THE COLD SEASON 137
3.10.1	FUEL AND LUBRICANTS 137
3.10.2	COOLANT 137
3.10.3	BATTERY 137
3.10.4	OTHER PRECAUTIONS 138
3.10.5	PRECAUTIONS TO BE TAKEN AT THE END OF WORK 138
3.11	PRECAUTIONS TO BE TAKEN IN THE WARM SEASON 139
3.12	USING THE MACHINE AS A LOADER 140
3.12.1	BUCKET POSITION INDICATOR 140
3.12.2	ORGANIZING THE WORK AREA 140
3.12.2.1	LOADING HEAPED AND LEVEL MATERIAL 141
3.12.2.2	LOADING OPERATIONS ON SLOPES 142
3.12.3	CHANGING THE STANDARD FRONT BUCKET 142
3.13	USING THE MACHINE AS AN EXCAVATOR 143
3.13.1	POSITIONING THE BUCKET ACCORDING TO THE WORK THAT MUST BE CARRIED OUT 143
3.13.2	POSITIONING THE MACHINE FOR DIGGING OPERATIONS 144
3.13.3	SLIDING THE BACKHOE UNIT SIDEWARDS 145
3.13.4	DIGGING METHOD 146
3.13.5	CHANGING THE BACKHOE BUCKET 147
3.14	LONG PERIODS OF INACTIVITY 148
3.14.1	BEFORE THE PERIOD OF INACTIVITY 148
3.14.2	DURING THE PERIOD OF INACTIVITY 150
3.14.3	AFTER THE PERIOD OF INACTIVITY 150
3.15	TROUBLESHOOTING 151
3.15.1	HOW TO REMOVE THE MACHINE 151
3.15.2	AFTER THE FUEL HAS RUN OUT 151
3.15.3	IF THE BATTERY IS DOWN 152
3.15.3.1	STARTING WITH BOOSTER CABLES 153
3.15.4	OTHER TROUBLES 154
3.15.4.1	ELECTRICAL CIRCUIT 154
3.15.4.2	HYDRAULIC SYSTEM 154
3.15.4.3	BRAKING SYSTEM 155
3.15.4.4	CONVERTER 155
3.15.4.5	ENGINE 156

MAINTENANCE

4.1	GUIDE TO MAINTENANCE	158
4.2	MAINTENANCE NOTES	160
4.2.1	NOTES REGARDING THE ENGINE	160
4.2.1.1	ENGINE OIL	160
4.2.1.2	COOLANT	160
4.2.1.3	FUEL	161
4.2.2	NOTES REGARDING THE HYDRAULIC SYSTEM	161
4.2.3	NOTES REGARDING THE ELECTRICAL SYSTEM	162
4.2.4	NOTES REGARDING LUBRICATION	162
4.2.5	PARTS SUBJECT TO WEAR THAT PERIODICALLY NEED CHANGING	163
4.3	FUEL, COOLANT AND LUBRICANTS	164
4.3.1	HOMOLOGATED HEES SYNTHETIC BIODEGRADABLE LUBRICANTS	166
4.4	DRIVING TORQUES FOR SCREWS AND NUTS	167
4.4.1	STANDARD DRIVING TORQUES	167
4.4.2	SPECIFIC TIGHTENING TORQUES	167
4.5	LUBRICATION	168
4.5.1	LUBRICATION DIAGRAM	168
4.5.2	LUBRICATION DIAGRAM (4in1 bucket and pallet forks)	169
4.5.3	LUBRICATION DIAGRAM (Front bucket rapid couplings)	170
4.5.4	LUBRICATION DIAGRAM (Telescopic arm)	171
4.5.5	LUBRICATION DIAGRAM (Offset device)	172
4.6	PERIODICAL CHANGE OF THE COMPONENTS CONNECTED WITH SAFETY	173
4.6.1	CRITICAL PARTS FOR SAFETY	174
4.7	MAINTENANCE PLAN	178
4.7.1	WHEN REQUIRED	182
4.7.1.a	CHECKING, CLEANING OR CHANGING THE AIR CLEANER CARTRIDGE ...	182
4.7.1.b	CHECKING AND CLEANING THE CAB AIR FILTER	183
4.7.1.c	CHECKING AND CLEANING THE RECIRCULATING AIR FILTER (only for machines with air conditioner)	184
4.7.1.d	BLEEDING THE BRAKING CIRCUIT	185
4.7.1.e	CLEANING THE WATER SEPARATOR	186
4.7.1.f	CHECKING AND ADJUSTING THE FRONT WHEEL TOE-IN	186
4.7.1.g	CHECKING AND ADJUSTING THE PARKING BRAKE	187
4.7.1.h	CHECKING THE BRAKING EFFICIENCY	188
4.7.1.j	CHECKING AND ADJUSTING THE BRAKE PEDAL STROKE	189
4.7.1.k	ADJUSTING THE AUTOMATIC RETURN-TO-DIG DEVICE OF THE FRONT BUCKET (if installed)	189
4.7.1.l	CHECKING AND ADJUSTING THE STABILIZER SLACK	190
4.7.2	MAINTENANCE INTERVALS IN CASE OF USE OF THE DEMOLITION HAMMER	191
4.7.2.a	CHANGING THE HYDRAULIC OIL FILTER	191
4.7.2.b	CHANGING THE HYDRAULIC OIL	191
4.7.3	CHECKS BEFORE STARTING	192
4.7.3.a	VARIOUS CHECKS	192
4.7.3.b	CHECKING THE COOLANT LEVEL	192
4.7.3.c	CHECKING THE FUEL LEVEL	193
4.7.3.d	CHECKING THE ENGINE OIL LEVEL	193
4.7.3.e	CHECKING THE HYDRAULIC CIRCUIT OIL LEVEL	194
4.7.3.f	DRAINING THE WATER SEPARATOR	195
4.7.4	MAINTENANCE EVERY 10 HOURS OF OPERATION	196
4.7.4.a	LUBRICATING THE JOINTS	196

	Page
4.7.5 MAINTENANCE AFTER THE FIRST 50 HOURS OF OPERATION (Only for machines in which the synthetic biodegradable oil type HEES is used)	198
4.7.6 MAINTENANCE EVERY 50 HOURS OF OPERATION	198
4.7.6.a CHECKING THE RADIATOR FLUID LEVEL	198
4.7.6.b CHECKING THE BRAKING SYSTEM OIL LEVEL	198
4.7.6.c LUBRICATING THE PROPELLER SHAFTS	199
4.7.6.d LUBRICATING THE FRONT AXLE JOINTS CENTRAL COUPLING	200
4.7.6.e CHECKING THE TYRE PRESSURE	200
4.7.6.f CHECKING THE ELECTRICAL SYSTEM	201
4.7.7 MAINTENANCE AFTER THE FIRST 250 HOURS OF OPERATION	202
4.7.8 MAINTENANCE EVERY 250 HOURS OF OPERATION	202
4.7.8.a ADJUSTING THE FAN BELT TENSION	202
4.7.8.b ADJUSTING THE A/C COMPRESSOR BELT TENSION (Only for machines with air conditioner)	203
4.7.8.c CHECKING THE BATTERY ELECTROLYTE LEVEL	204
4.7.8.d CHECKING THE FRONT AXLE OIL LEVELS	205
4.7.8.e CHECKING THE REAR AXLE OIL LEVELS	205
4.7.8.f CHECKING THE HYDRAULIC TRANSMISSION OIL LEVEL	206
4.7.8.g CHECKING THE WHEEL NUT DRIVING TORQUE	206
4.7.9 MAINTENANCE AFTER THE FIRST 500 HOURS OF OPERATION (Only for machines in which the synthetic biodegradable oil type HEES is used)	207
4.7.10 MAINTENANCE EVERY 500 HOURS OF OPERATION	207
4.7.10.a CHANGING THE ENGINE OIL	207
4.7.10.b CHANGING THE ENGINE OIL FILTER	208
4.7.10.c CHANGING THE HYDRAULIC SYSTEM OIL FILTER	209
4.7.10.d CHANGING THE FUEL FILTER	210
4.7.10.e DRAINING THE FUEL TANK	211
4.7.10.f DRAINING THE HYDRAULIC OIL TANK (Only for machines in which the synthetic biodegradable oil type HEES is used)	212
4.7.10.g CLEANING THE OUTSIDE OF THE RADIATORS	213
4.7.10.h CLEANING THE OUTSIDE OF THE A/C CONDENSER (Only for machines with air conditioner)	214
4.7.11 MAINTENANCE EVERY 1000 HOURS OF OPERATION	215
4.7.11.a CHANGING THE FRONT AXLE OIL	215
4.7.11.b CHANGING THE REAR AXLE OIL	216
4.7.11.c CHANGING THE HYDRAULIC TRANSMISSION OIL	217
4.7.11.d CHANGING THE HYDRAULIC TRANSMISSION FILTER	218
4.7.11.e CHECKING AND ADJUSTING THE ENGINE VALVE CLEARANCE	218
4.7.12 MAINTENANCE EVERY 2000 HOURS OF OPERATION	219
4.7.12.a CHANGING THE HYDRAULIC SYSTEM OIL AND CLEANING THE SUCTION FILTER	219
4.7.12.b CHANGING THE COOLANT	222
4.7.12.c CHANGING THE BRAKING SYSTEM OIL	224
4.7.12.d CHECKING THE ALTERNATOR AND THE STARTER	225
4.7.12.e CHECKING THE QUANTITY OF COOLANT IN THE A/C SYSTEM (Only for machines with air conditioner)	225
4.7.13 MAINTENANCE EVERY 4000 HOURS OF OPERATION	226
4.7.13.a CHANGING THE A/C DEHYDRATING FILTER (Only for machines with air conditioner)	226
4.7.13.a CHECKING THE OPERATING CONDITIONS OF THE A/C COMPRESSOR (Only for machines with air conditioner)	226

TECHNICAL SPECIFICATIONS

5.1	TECHNICAL DATA	228
5.1.1	STANDARD OVERALL DIMENSIONS	228
5.1.1.1	STANDARD OVERALL DIMENSIONS WITH CENTERED BACKHOE	228
5.1.1.2	STANDARD OVERALL DIMENSIONS WITH FOLDED BACKHOE	228
5.1.2	TECHNICAL CHARACTERISTICS	229
5.1.2.1	TECHNICAL CHARACTERISTICS WB91R-2	229
5.1.2.2	TECHNICAL CHARACTERISTICS WB93R-2	230
5.1.3	LIFTING CAPACITIES	231
5.1.3.1	SYMBOL TABLE	231
5.1.3.2	LIFTING CAPACITY WB91R-2 (STANDARD BOOM)	232
5.1.3.3	LIFTING CAPACITY WB91R-2 (OFFSET BOOM)	233
5.1.3.4	LIFTING CAPACITY WB93R-2 (STANDARD BOOM)	234
5.1.3.5	LIFTING CAPACITY WB93R-2 (OFFSET BOOM)	235

AUTHORIZED OPTIONAL EQUIPMENT

6.1	AUTHORIZED OPTIONAL EQUIPMENT	238
6.1.1	PRECAUTIONS REGARDING SAFETY	238
6.1.2	CHARACTERISTICS OF THE OPTIONAL EQUIPMENT	239
6.1.2.1	CHARACTERISTICS OF THE OPTIONAL EQUIPMENT FOR MODEL WB91R-2	239
6.1.2.2	CHARACTERISTICS OF THE OPTIONAL EQUIPMENT FOR MODEL WB93R-2	240
6.2	FRONT EQUIPMENT QUICK COUPLING DEVICES	241
6.2.1	MANUAL CONTROL QUICK COUPLING	241
6.2.2	HYDRAULIC CONTROL QUICK COUPLING FOR STANDARD BUCKET	242
6.2.3	HYDRAULIC CONTROL QUICK COUPLING FOR 4IN1 BUCKET AND OPTIONAL EQUIPMENT WITH UNIDIRECTIONAL OIL FLOW	242
6.3	4in1 BUCKET	243
6.3.1	DESCRIPTION AND CONTROLS	243
6.3.2	SAFETY DEVICES	243
6.3.3	INSTALLING THE 4in1 BUCKET	244
6.3.4	USING THE 4in1 BUCKET	245
6.3.5	MAINTENANCE	245
6.4	PALLET FORKS	246
6.4.1	DESCRIPTION	246
6.4.2	SAFETY DEVICES	246
6.4.3	USING THE FORKS	247
6.4.3.1	PREPARING THE PALLET FORKS FOR USE	247
6.4.3.2	OVERTURNING THE FORKS FOR TRAVEL ON ROADS	248
6.4.4	REMOVING THE FORKS	249
6.4.5	INSTALLING THE FORKS	249
6.4.6	MAINTENANCE	249
6.5	BACKHOE TELESCOPIC ARM	250
6.5.1	DESCRIPTION AND CONTROL	250
6.5.1.1	VERSION WITH STANDARD CONTROLS	250
6.5.1.2	VERSION WITH SERVO CONTROLS (if installed)	250

TABLE OF CONTENTS

	Page
6.5.2 SAFETY DEVICES	251
6.5.3 USING THE TELESCOPIC ARM	251
6.5.4 MAINTENANCE	252
6.5.4.1 ADJUSTING THE GUIDE SLACK	252
6.6 ARRANGEMENT FOR THE INSTALLATION OF THE DEMOLITION HAMMER	254
6.6.1 DESCRIPTION AND CONTROL	254
6.6.1.1 VERSION WITH STANDARD CONTROLS	254
6.6.1.2 VERSION WITH SERVO CONTROLS (if installed)	254
6.6.2 USE OF THE DEMOLITION HAMMER AND RULES TO BE OBSERVED	255
6.6.3 INSTALLING AND REMOVING THE DEMOLITION HAMMER	259
6.6.3.1 INSTALLING THE HAMMER	259
6.6.3.2 REMOVING THE HAMMER	261
6.6.4 USING THE HAMMER	261
6.6.5 MAINTENANCE	261
6.7 APPLICATION OF THE OFFSET DEVICE	262
6.7.1 DESCRIPTION AND CONTROL	262
6.7.1.1 VERSION WITH STANDARD CONTROLS	262
6.7.1.2 VERSION WITH SERVO CONTROLS (if installed)	263
6.7.2 MAINTENANCE	263
6.8 ARRANGEMENT FOR THE OPERATION OF OPTIONAL EQUIPMENT WITH UNIDIRECTIONAL OIL FLOW	264
6.8.1 DESCRIPTION AND CONTROL	264
6.8.1.1 VERSION WITH STANDARD CONTROLS	264
6.8.1.2 VERSION WITH SERVO CONTROLS (if installed)	264
6.8.2 INSTALLING AND CONNECTING THE EQUIPMENT	265
6.8.3 MAINTENANCE	265
6.9 ARRANGEMENT FOR THE INSTALLATION OF THE CLAMSHELL BUCKET	266
6.9.1 DESCRIPTION AND CONTROL	266
6.9.1.1 VERSION WITH STANDARD CONTROLS	266
6.9.1.2 VERSION WITH SERVO CONTROLS (if installed)	267
6.9.2 INSTALLING THE CLAMSHELL BUCKET	268
6.9.3 USING THE CLAMSHELL BUCKET	269
6.9.4 MAINTENANCE	269
6.10 ARRANGEMENT FOR THE INSTALLATION OF THE MANUAL HYDRAULIC HAMMER	270
6.10.1 DESCRIPTION AND CONTROL	270
6.10.2 CONNECTING AND REMOVING THE HAMMER	271
6.10.2.1 CONNECTING THE HAMMER	271
6.10.2.2 REMOVING THE CONNECTIONS	271
6.10.3 USING THE HAMMER	272
6.10.4 MAINTENANCE	272
6.11 LOAD STABILIZER SYSTEM (LSS) (Optional)	273
6.11.1 ACCUMULATOR OF THE LOAD STABILIZER SYSTEM (LSS)	273
6.12 REAR EQUIPMENT RAPID COUPLING DEVICE	274
6.12.1 EQUIPMENT COUPLING AND RELEASE PROCEDURE	275
6.12.2 MAINTENANCE	277