

Operation & Maintenance Manual



WA600-6

WHEEL LOADER

SERIAL NUMBER

WA600-6 - 60001 and up



WARNING

Unsafe use of this machine may cause serious injury or death. Operators and maintenance personnel must read this manual before operating or maintaining this machine. This manual should be kept inside the cab for reference and periodically reviewed by all personnel who will come into contact with the machine.

KOMATSU

FOREWORD

FOREWORD

This manual provides rules and guidelines which will help you use this machine safely and effectively. The precautions in this manual must be followed at all times when performing operation and maintenance. Most accidents are caused by the failure to follow fundamental safety rules for the operation and maintenance of machines. Accidents can be prevented by knowing beforehand conditions that may cause a hazard when performing operation and maintenance.

WARNING

Operators and maintenance personnel must always do as follows before beginning operation or maintenance.

Always be sure to read and understand this manual thoroughly before performing operation and maintenance.

Read the safety messages given in this manual and the safety labels affixed to the machine thoroughly and be sure that you understand them fully.

Keep this manual in the storage location for the operation and maintenance manual given below, and have all personnel read it periodically.

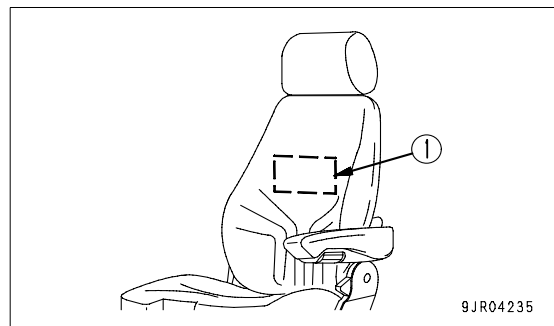
If this manual has been lost or has become dirty and cannot be read, request a replacement manual immediately from Komatsu or your Komatsu distributor.

If you sell the machine, be sure to give this manual to the new owners together with the machine.

Komatsu delivers machines that comply with all applicable regulations and standards of the country to which it has been shipped. If this machine has been purchased in another country or purchased from someone in another country, it may lack certain safety devices and specifications that are necessary for use in your country. If there is any question about whether your product complies with the applicable standards and regulations of your country, consult Komatsu or your Komatsu distributor before operating the machine.

Storage location for the Operation and Maintenance Manual:

Pocket (1) at rear of operator's seat



9JR04235

SAFETY INFORMATION

To enable you to use this machine safely, safety precautions and labels are given in this manual and affixed to the machine to give explanations of situations involving potential hazards and of the methods of avoiding such situations.

Signal words

The following signal words are used to inform you that there is a potential hazardous situation that may lead to personal injury or damage.

In this manual and on machine labels, the following signal words are used to express the potential level of hazard.



Indicates an imminently hazardous situation which, if not avoided, will result in death or serious injury.



Indicates a potentially hazardous situation which, if not avoided, could result in death or serious injury.



Indicates a potentially hazardous situation which, if not avoided, may result in minor or moderate injury. This word is used also to alert against unsafe practices that may cause property damage.

Example of safety message using signal word



When standing up from the operator's seat, always place the work equipment lock lever in the LOCK position.

If you accidentally touch the work equipment control levers when they are not locked, this may cause a serious injury or death.

Other signal words

In addition to the above, the following signal words are used to indicate precautions that should be followed to protect the machine or to give information that is useful to know.

NOTICE

This word is used for precautions that must be taken to avoid actions which could shorten the life of the machine.

REMARKS

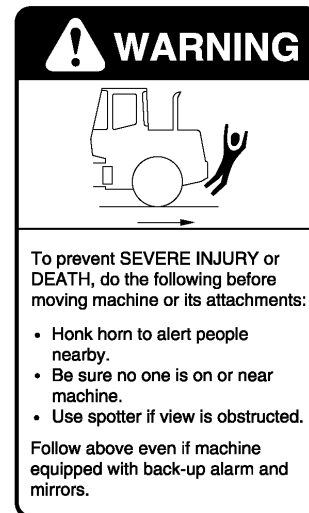
This word is used for information that is useful to know.

● Safety labels

Safety labels are affixed to the machine to inform the operator or maintenance worker on the spot when carrying out operation or maintenance of the machine that may involve hazard.

This machine uses “Safety labels using words” and “Safety labels using pictograms” to indicate safety procedures.

Example of safety label using words



Safety labels using pictogram

Safety pictograms use a picture to express a level of hazardous condition equivalent to the signal word. These safety pictograms use pictures in order to let the operator or maintenance worker understand the level and type of hazardous condition at all times. Safety pictograms show the type of hazardous condition at the top or left side, and the method of avoiding the hazardous condition at the bottom or right side. In addition, the type of hazardous condition is displayed inside a triangle and the method of avoiding the hazardous condition is shown inside a circle.



Part No.

Komatsu cannot predict every circumstance that might involve a potential hazard in operation and maintenance. Therefore, the safety messages in this manual and on the machine may not include all possible safety precautions.

If any procedures or actions not specifically recommended or allowed in this manual are used, it is your responsibility to take the necessary steps to ensure safety.

In no event should you engage in prohibited uses or actions described in this manual.

The explanations, values, and illustrations in this manual were prepared based on the latest information available at that time. Continuing improvements in the design of this machine can lead to changes in detail which may not be reflected in this manual.

In addition, the illustrations in this manual may show the machine with optional equipment installed.

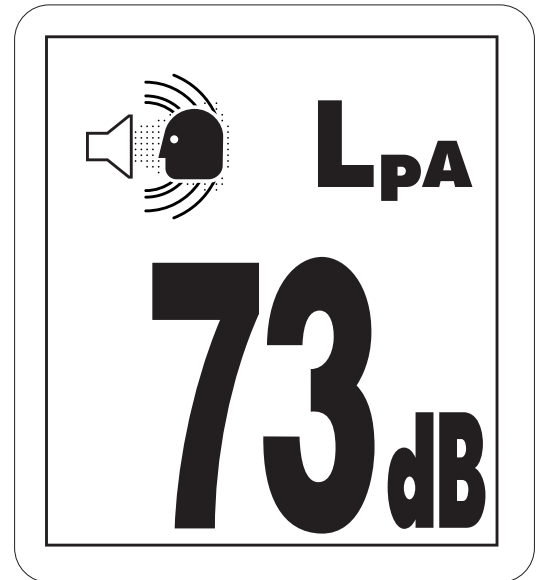
If there are any unclear points or you have any questions, please contact your Komatsu distributor.

The numbers in circles in the illustrations correspond to the numbers in () in the text. (For example: ① -> (1))

Noise emission levels

Two labels indicating the machine noise level are affixed on the machine.

- Sound pressure level at the operator's station, measured according to ISO6396 (Dynamic test method, simulated working cycle).
- Sound power level emitted by the machine, measured according to ISO 6395 (Dynamic test method, simulated working cycle). This is the guaranteed value as specified in European directive 2000/14/EC.



Vibration levels

When used for its intended purpose, levels of vibration for the earth-moving machine transmitted from the operator's seat are lower than or equal to the tested vibrations for the relative machinery class in compliance with ISO 7096.

The actual acceleration value for the hands and arms is less than or equal to 2.5 m/s². The actual acceleration value for the body is less than or equal to 0.5 m/s².

These values were determined using a representative machine and measured during the typical operating condition indicated below according to the measurement procedures that are defined in the standards ISO 2631/1 and ISO 5349.

Operating condition:

(WHEEL LOADER:) V-shape loading

Guide to Reduce Vibration Levels on Machine

The following guides can help an operator of this machine to reduce the whole body vibration levels:

1. Use the correct equipment and attachments.
2. Maintain the machine according to this manual
 - Tire pressures (for wheeled machines), tension of crawler (for crawler machines)
 - Brake and steering systems
 - Controls, hydraulic system and linkages
3. Keep the terrain where the machine is working and traveling in good condition
 - Remove any large rocks or obstacles
 - Fill any ditches and holes
 - Site manager should provide machine operators with machine and schedule time to maintain terrain conditions
4. Use a seat that meets ISO 7096 and keep the seat maintained and adjusted
 - Adjust the seat and suspension for the weight and size of the operator
 - Wear seat belt
 - Inspect and maintain the seat suspension and adjustment mechanisms
5. Steer, brake, accelerate, shift gears (for wheeled machines), and move the attachment levers and pedals slowly so that the machine moves smoothly
6. Adjust the machine speed and travel path to minimize the vibration level
 - When pushing with bucket or blade, avoid sudden loading; load gradually
 - Drive around obstacles and rough terrain conditions
 - Slow down when it is necessary to go over rough terrain
 - Make the curve radius of traveling path as large as possible
 - Travel at low speed when traveling around sharp curves
7. Minimize vibrations for long work cycle or long distance traveling
 - Reduce speed to prevent bounce
 - Transport machines long distances between worksites
8. The following guidelines can be effective to minimize risks of low back pain
 - Operate the machine only when you are in good health.
 - Provide breaks to reduce long periods of sitting in the same posture
 - Do not jump down from the cab or machine
 - Do not repeatedly handle and lift loads.

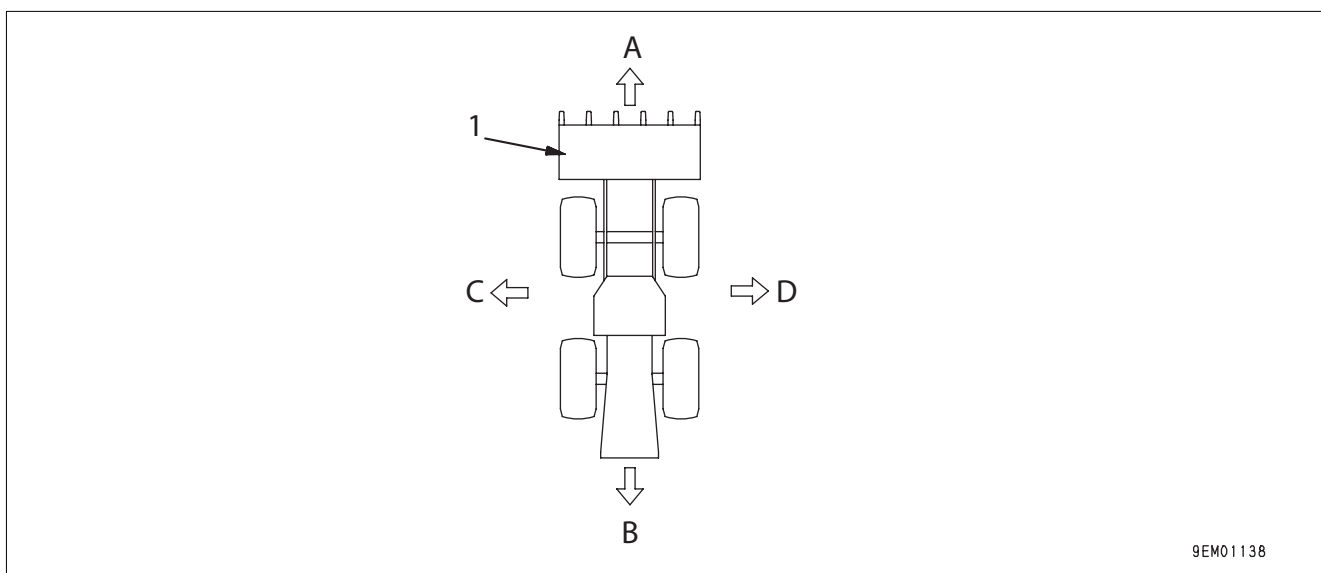
INTRODUCTION

This Komatsu machine is designed to be used mainly for the following work:

- Digging work
- Smoothing
- Pushing work
- Loading work

For details of the operating procedure, see "WORK POSSIBLE USING WHEEL LOADER (3-138)".

FRONT/REAR, LEFT/RIGHT DIRECTIONS OF MACHINE



- (1) Bucket
(A) Front
(B) Rear

- (C) Left
(D) Right

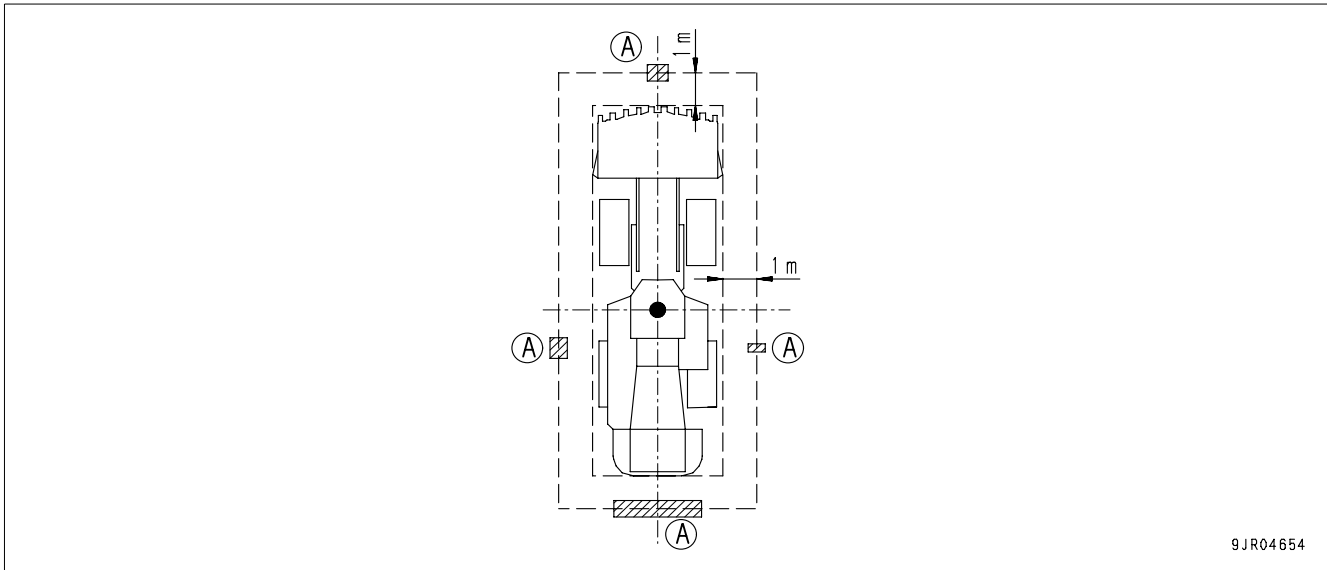
In this manual, the directions of the machine (front, rear, left, right) are determined according to the view from the operator's seat in the direction of travel (front) of the machine.

VISIBILITY FROM OPERATOR'S SEAT

The visibility standards (ISO 5006) for this machine require a view shown in the diagram below.

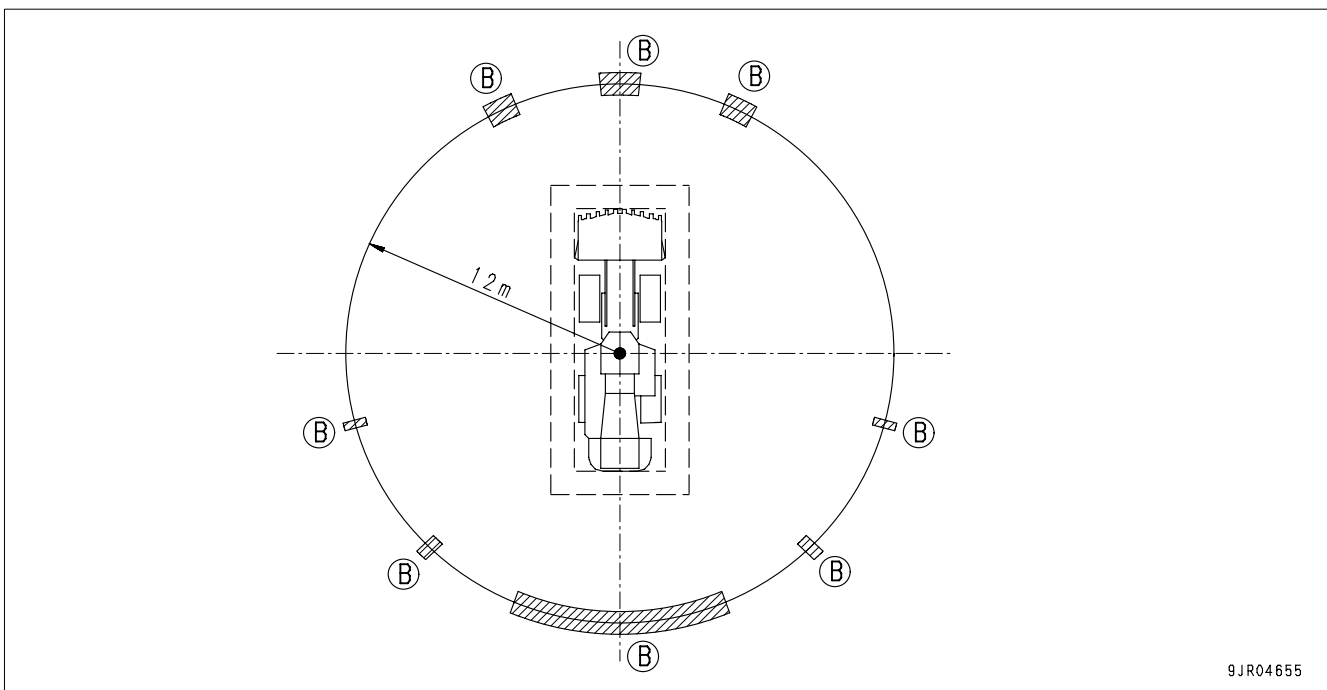
VISIBILITY IN IMMEDIATE AREA

The visibility of this machine in the area 1 m from the outside surface of the machine at a height of 1.5 m is shown in the diagram below. The hatched area (A) shows the area where the view is blocked by part of the machine when mirrors or other aids to visibility are installed as standard. Please be fully aware that there are places that cannot be seen when operating the machine.



12-M RADIUS VISIBILITY

The visibility at a radius of 12 m from the machine is as shown in the diagram below. The hatched areas (B) show the areas where the view is blocked when mirrors or other aids to visibility are installed as standard. Please be fully aware that there are places that cannot be seen when operating the machine.



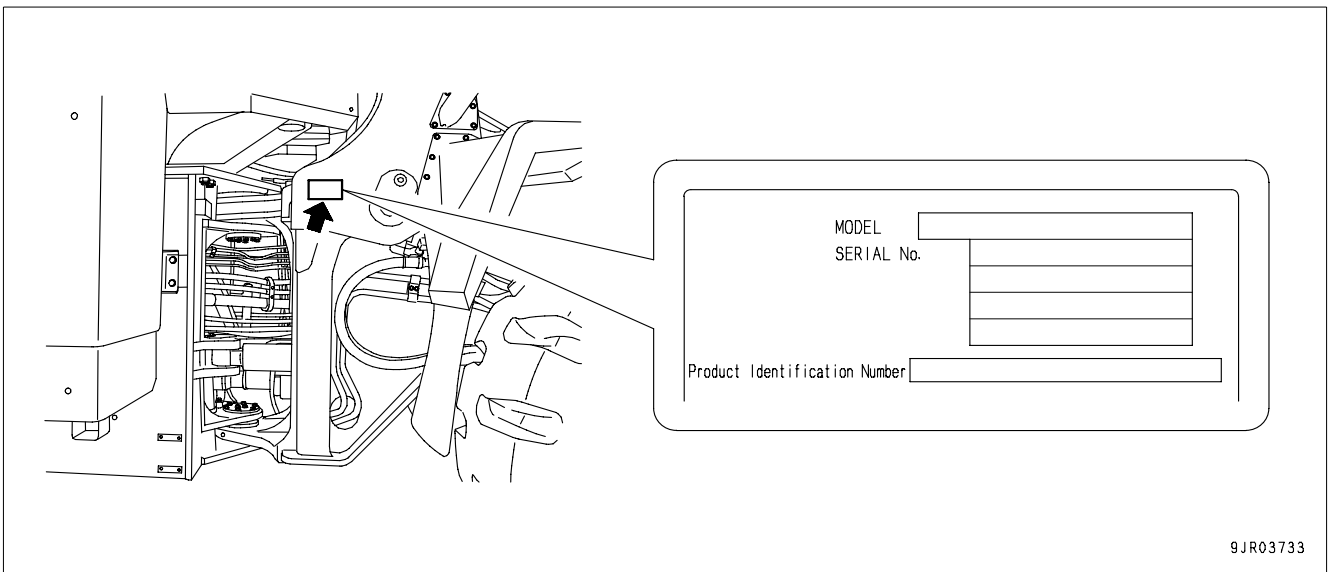
NECESSARY INFORMATION

When requesting service or ordering replacement parts, please inform your Komatsu distributor of the following items.

PRODUCT IDENTIFICATION NUMBER (PIN)/MACHINE SERIAL NO. PLATE

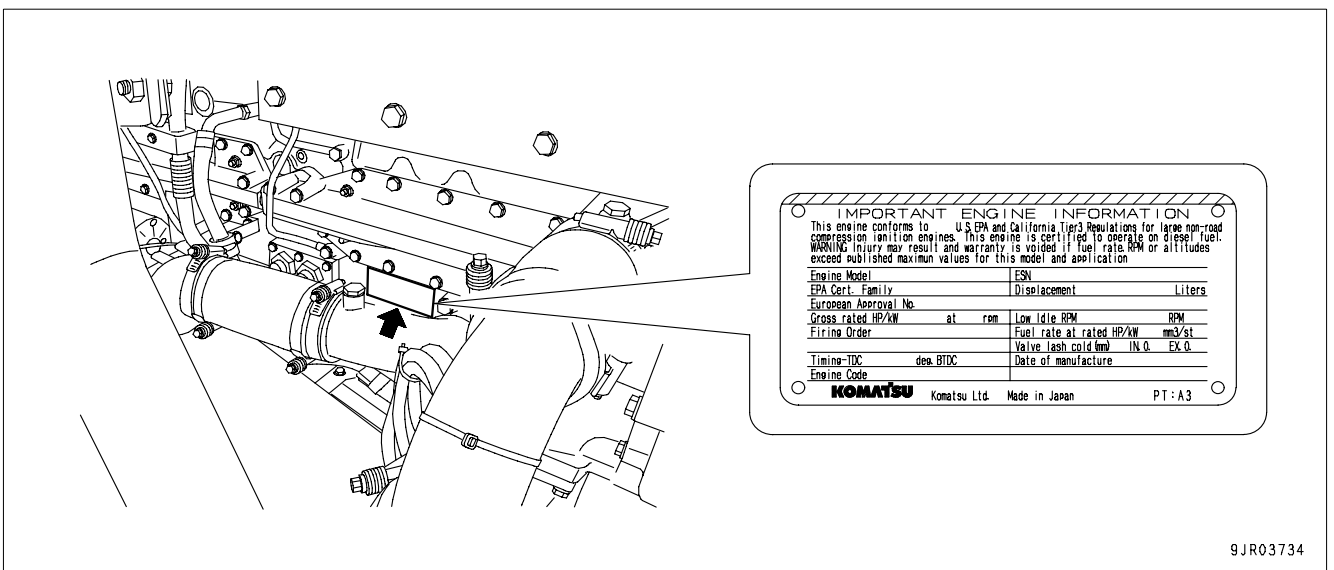
On the center right of the front frame.

The design of the nameplate differs according to the territory.



EPA REGULATIONS, ENGINE NUMBER PLATE

This name plate is affixed on the oil cooler at the side of engine cylinder block on the left side of machine.



EPA: Environmental Protection Agency, U.S.A.

POSITION OF SERVICE METER

The service meter is displayed on the character display at the bottom center of the machine monitor.

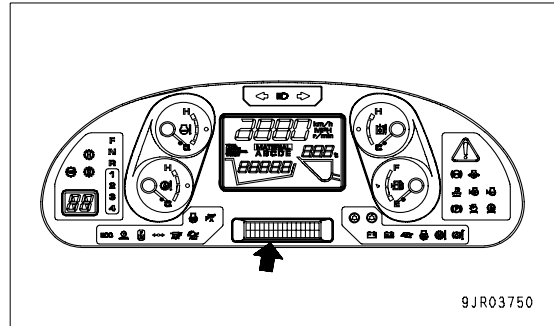


TABLE TO ENTER SERIAL NO. AND DISTRIBUTOR

Machine serial No.

Engine serial No.

Product Identification Number

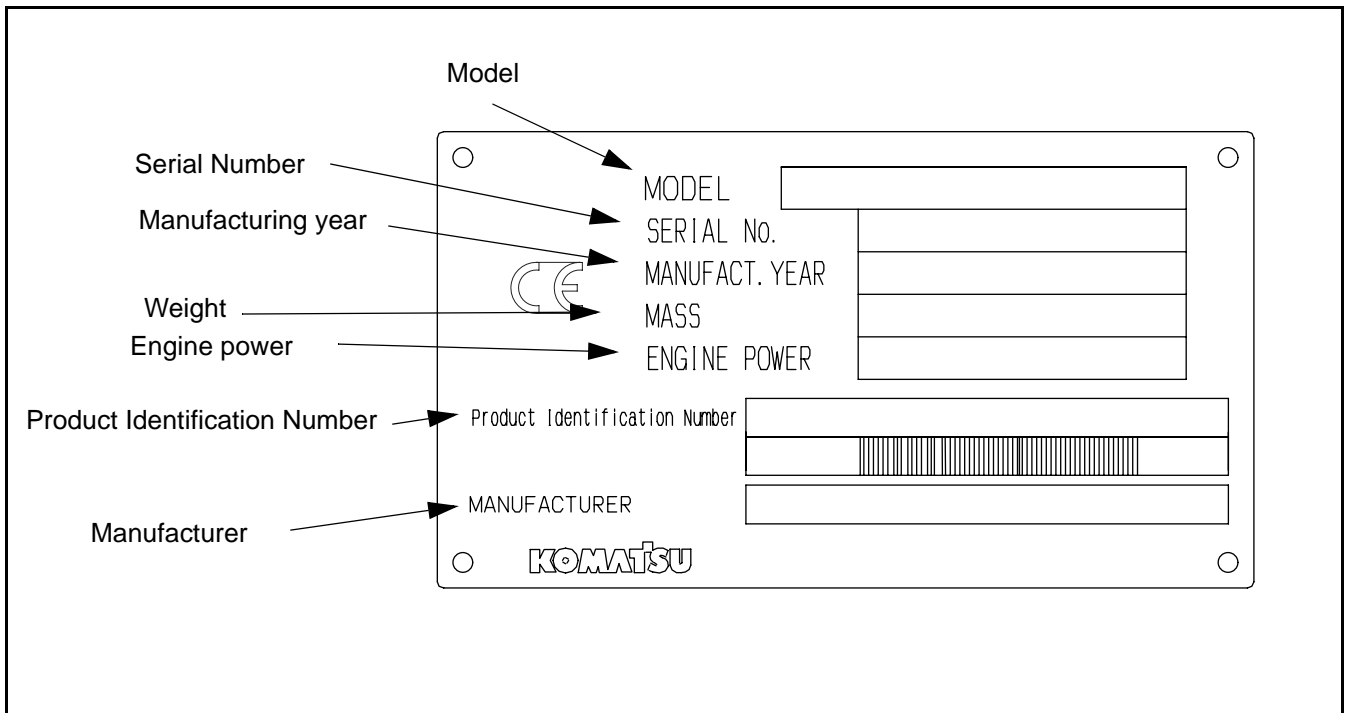
Manufacturers name:	KOMATSU LTD.
Address:	3-6 Akasaka Minato-ku, 101 Tokyo Japan

Distributor
Address

Phone

Service personnel for your
machine:

MACHINE SERIAL NUMBER PLATE



CONTENTS

FOREWORD

FOREWORD	1-2
SAFETY INFORMATION	1-3
Noise emission levels	1-5
Vibration levels.....	1-5
Guide to Reduce Vibration Levels on Machine.....	1-6
INTRODUCTION	1-7
FRONT/REAR, LEFT/RIGHT DIRECTIONS OF MACHINE	1-7
VISIBILITY FROM OPERATOR'S SEAT	1-8
VISIBILITY IN IMMEDIATE AREA.....	1-8
12-M RADIUS VISIBILITY	1-8
NECESSARY INFORMATION	1-9
PRODUCT IDENTIFICATION NUMBER (PIN)/MACHINE SERIAL NO. PLATE.....	1-9
EPA REGULATIONS, ENGINE NUMBER PLATE	1-9
POSITION OF SERVICE METER	1-10
TABLE TO ENTER SERIAL NO. AND DISTRIBUTOR	1-10
MACHINE SERIAL NUMBER PLATE.....	1-11

SAFETY

SAFETY	2-2
SAFETY LABELS	2-4
LOCATION OF SAFETY LABELS	2-5
SAFETY LABELS	2-6
GENERAL PRECAUTIONS	2-14
PRECAUTIONS FOR OPERATION	2-24
STARTING ENGINE	2-24
OPERATION.....	2-26
TRANSPORTATION.....	2-32
BATTERY	2-33
TOWING	2-35
PRECAUTIONS FOR MAINTENANCE	2-36
PRECAUTIONS WITH TIRES	2-44

OPERATION

GENERAL VIEW	3-2
GENERAL VIEW OF MACHINE	3-2
GENERAL VIEW OF CONTROLS AND GAUGES.....	3-3
EXPLANATION OF COMPONENTS	3-8
MACHINE MONITOR	3-8
TYPES OF WARNING.....	3-9
CENTRAL WARNING LAMP.....	3-10
CHARACTER DISPLAY PORTION.....	3-10
EMERGENCY STOP ITEMS.....	3-16
CAUTION ITEMS.....	3-19
INSPECTION AND MAINTENANCE ITEMS	3-22
PILOT DISPLAY PORTION.....	3-25
METER DISPLAY PORTION.....	3-31
OTHER FUNCTIONS OF MACHINE MONITOR.....	3-33
SWITCHES	3-44
FRONT PANEL, AJSS LEVER SWITCH, REAR BOX	3-44
RIGHT SWITCH PANEL, CONTROL LEVER SWITCH	3-52
OVERHEAD PORTION	3-61
CONTROL LEVERS, PEDALS	3-65
CAP WITH LOCK.....	3-72
METHOD OF OPENING AND CLOSING CAP WITH LOCK (FOR THE FUEL TANK FILLER PORT).....	3-72
METHOD OF OPENING AND CLOSING CAP WITH LOCK (FOR THE HYDRAULIC TANK FILLER PORT).....	3-73
FRAME LOCK BAR	3-74
TOWING PIN	3-75
BACKUP ALARM.....	3-75
OPENING CAB, WINDOW DOOR	3-76
OPEN LOCK CANCEL KNOB FOR RIGHT CAB DOOR.....	3-76
CAB LEFT DOOR OPEN KNOB	3-77
OPEN LOCK CANCEL KNOB FOR LEFT CAB WINDOW	3-77
HANDLING CAB WIPER	3-78
PREVENTING DAMAGE TO WIPER ARM BRACKET	3-78
DUST INDICATOR	3-78
FUSE	3-79
FUSE CAPACITY AND NAME OF CIRCUIT.....	3-79
CIRCUIT BREAKER	3-80
SLOW BLOW FUSE	3-81
LUNCH BOX TRAY	3-81
TOOL BOX.....	3-81
GREASE PUMP.....	3-82
LOCATION OF FIRE EXTINGUISHER	3-82
POWER OUTLET	3-82
AM/FM RADIO-CASSETTE STEREO	3-83
EXPLANATION OF COMPONENTS.....	3-83

CONTENTS

METHOD OF OPERATION	3-88
PRECAUTIONS WHEN USING	3-90
AIR CONDITIONER	3-91
GENERAL LOCATIONS AND FUNCTION OF CONTROL PANEL	3-91
METHOD OF OPERATION	3-95
USE AIR CONDITIONER WITH CARE	3-101
AIR CONDITIONER MAINTENANCE	3-102
COOL BOX	3-102
OTHER FUNCTIONS	3-102
OPERATION	3-104
CHECK BEFORE STARTING ENGINE, ADJUST	3-104
WALK-AROUND CHECK	3-104
CHECK BEFORE STARTING	3-107
ADJUSTMENT	3-114
OPERATIONS AND CHECKS BEFORE STARTING ENGINE	3-119
STARTING ENGINE	3-120
AUTOMATIC WARMING-UP OPERATION	3-122
OPERATIONS AND CHECKS AFTER STARTING ENGINE	3-122
BREAKING-IN THE MACHINE	3-122
NORMAL OPERATION	3-123
STOPPING ENGINE	3-124
CHECK AFTER STOPPING ENGINE	3-124
MOVING THE MACHINE (DIRECTIONAL, SPEED), STOPPING THE MACHINE	3-125
PREPARATIONS FOR MOVING MACHINE	3-125
CHANGING GEAR SPEED	3-128
CHANGING DIRECTION	3-129
STOPPING THE MACHINE	3-130
TURNING	3-132
EMERGENCY STEERING	3-133
OPERATION OF WORK EQUIPMENT	3-134
SEMI AUTO DIGGING OPERATIONS	3-135
REMOTE POSITIONER	3-136
WORK POSSIBLE USING WHEEL LOADER	3-138
RECOMMENDED COMBINATION OF SWITCHES FOR OPERATION	3-138
DIGGING OPERATIONS	3-139
LEVELING OPERATIONS	3-142
PUSHING OPERATION	3-142
LOAD AND CARRY OPERATIONS	3-142
LOADING OPERATIONS	3-143
PRECAUTIONS WHEN HANDLING BLASTED ROCK	3-145
PRECAUTIONS FOR OPERATION	3-157
PERMISSIBLE WATER DEPTH	3-157
IF WHEEL BRAKE DOES NOT WORK	3-157
PRECAUTIONS WHEN DRIVING UP OR DOWN SLOPES	3-157
REMOVAL AND INSTALLATION OF THE BUCKET	3-159
REMOVING THE BUCKET	3-159
INSTALLING THE BUCKET	3-161

PARKING MACHINE	3-163
CHECKS AFTER COMPLETION OF OPERATION	3-165
LOCKING.....	3-165
HANDLING THE TIRES.....	3-166
PRECAUTIONS WHEN HANDLING TIRES.....	3-166
TIRE PRESSURE.....	3-166
PRECAUTIONS FOR USING LOAD AND CARRY METHOD	3-168
PRECAUTIONS FOR USING STONE HANDLING METHOD	3-168
PRECAUTIONS RELATED TO FITTING TIRE CHAINS AND ADDING BALLAST	3-168
TRANSPORTATION.....	3-169
TRANSPORTATION PROCEDURE.....	3-169
LOADING, UNLOADING WORK	3-169
METHOD OF SECURING MACHINE.....	3-169
METHOD OF LIFTING MACHINE	3-171
LOCATION OF LIFTING POSITION MARK	3-172
WEIGHT TABLE	3-172
LIFTING PROCEDURE	3-173
PRECAUTIONS WHEN DISASSEMBLY OR REASSEMBLING WORK EQUIPMENT	3-174
COLD WEATHER OPERATION	3-175
PRECAUTIONS FOR LOW TEMPERATURE	3-175
FUEL AND LUBRICANTS	3-175
COOLANT	3-175
BATTERY	3-176
PRECAUTIONS AFTER COMPLETION OF WORK	3-176
AFTER COLD WEATHER	3-177
WARMING-UP OPERATION FOR STEERING HYDRAULIC CIRCUIT IN COLD WEATHER.....	3-177
LONG-TERM STORAGE.....	3-178
BEFORE STORAGE.....	3-178
DURING STORAGE	3-178
AFTER STORAGE.....	3-178
TROUBLESHOOTING.....	3-179
WHEN MACHINE RUNS OUT OF FUEL	3-179
METHOD OF TOWING MACHINE.....	3-179
WHEN ENGINE RUNS.....	3-180
WHEN ENGINE DOES NOT RUN	3-180
RELEASING PARKING BRAKE.....	3-181
EMERGENCY TRAVEL OPERATION	3-182
IF BATTERY IS DISCHARGED.....	3-183
REMOVAL AND INSTALLATION OF BATTERY	3-183
PRECAUTIONS FOR CHARGING BATTERY	3-184
STARTING ENGINE WITH BOOSTER CABLE	3-184
STARTING ENGINE WHEN USING STARTING AID CONNECTOR (if equipped)	3-186
METHOD FOR LOWERING WORK EQUIPMENT WHEN ENGINE HAS STOPPED	3-187
OTHER TROUBLE	3-188
ELECTRICAL SYSTEM.....	3-188

CONTENTS

CHASSIS	3-189
ENGINE	3-191

MAINTENANCE

GUIDES TO MAINTENANCE	4-2
OUTLINES OF SERVICE	4-4
HANDLING OIL, FUEL, COOLANT, AND PERFORMING OIL CLINIC.....	4-4
OIL	4-4
FUEL.....	4-5
COOLANT AND WATER FOR DILUTION.....	4-5
GREASE	4-6
CARRYING OUT KOWA (Komatsu Oil Wear Analysis)	4-6
STORING OIL AND FUEL.....	4-7
FILTERS	4-7
OUTLINE OF ELECTRIC SYSTEM	4-8
WEAR PARTS	4-9
WEAR PARTS LIST.....	4-9
RECOMMENDED FUEL, COOLANT, AND LUBRICANT	4-10
USE OF FUEL, COOLANT AND LUBRICANTS ACCORDING TO AMBIENT TEMPERATURE.....	4-11
RECOMMENDED BRANDS, RECOMMENDED QUALITY FOR PRODUCTS OTHER THAN KOMATSU GENUINE OIL.....	4-13
STANDARD TIGHTENING TORQUES FOR BOLTS AND NUTS	4-14
TORQUE LIST	4-14
PERIODIC REPLACEMENT OF SAFETY CRITICAL PARTS	4-16
SAFETY CRITICAL PARTS.....	4-17
MAINTENANCE SCHEDULE CHART	4-19
MAINTENANCE SCHEDULE CHART	4-19
SERVICE PROCEDURE	4-21
INITIAL 10 HOURS SERVICE (SERVICE FOR FIRST 50 HOURS ON NEW MACHINE).....	4-21
INITIAL 250 HOURS SERVICE	4-21
WHEN REQUIRED	4-22
CHECK, CLEAN, OR REPLACE AIR CLEANER ELEMENT	4-22
CLEAN INSIDE OF COOLING SYSTEM	4-24
CHECK TRANSMISSION OIL LEVEL, ADD OIL	4-28
CHECK AXLE OIL LEVEL, ADD OIL.....	4-30
CLEAN AXLE CASE BREATHER	4-31
CLEAN AIR CONDITIONER CONDENSER.....	4-32
CHECK WINDOW WASHING FLUID LEVEL, ADD FLUID.....	4-32
CLEAN RADIATOR FINS	4-33
REPLACE BUCKET TEETH.....	4-37
LUBRICATING.....	4-38

CHECK AIR CONDITIONER	4-39
REPLACE SLOW BLOW FUSE	4-40
BLEEDING AIR FROM HYDRAULIC TANK.....	4-41
BLEEDING AIR FROM FUEL CIRCUIT	4-43
CHECKING FUNCTION OF ACCUMULATOR	4-46
SELECTION AND INSPECTION OF TIRES	4-46
CHECK BEFORE STARTING	4-48
EVERY 50 HOURS SERVICE	4-49
DRAIN WATER, SEDIMENT FROM FUEL TANK.....	4-49
EVERY 100 HOURS SERVICE	4-50
LUBRICATING.....	4-50
LUBRICATE REAR AXLE PIVOT PIN.....	4-52
CHECK OIL LEVEL IN HYDRAULIC TANK, ADD OIL.....	4-53
CLEAN ELEMENT IN AIR CONDITIONER FRESH AIR FILTER	4-54
EVERY 250 HOURS SERVICE	4-55
CHECK BATTERY ELECTROLYTE LEVEL	4-55
CHECK PARKING BRAKE.....	4-56
CHECK FOR LOOSE WHEEL HUB BOLTS, TIGHTEN	4-57
CLEAN ELEMENT IN AIR CONDITIONER RECIRCULATION FILTER	4-57
CHECKING FUNCTION OF ACCUMULATOR	4-57
EVERY 500 HOURS SERVICE	4-58
CHANGE OIL IN ENGINE OIL PAN, REPLACE ENGINE OIL FILTER CARTRIDGE	4-58
REPLACE FUEL PRE-FILTER CARTRIDGE.....	4-59
REPLACE FUEL FILTER CARTRIDGE	4-61
REPLACE TRANSMISSION OIL FILTER ELEMENT	4-62
REPLACE BRAKE OIL FILTER CARTRIDGE	4-63
CHECK, REPLACE COMPRESSOR DRIVE BELT FOR ALTERNATOR, AIR CONDITIONER	4-64
EVERY 1000 HOURS SERVICE	4-65
CHANGE OIL IN TRANSMISSION CASE, CLEAN STRAINER.....	4-65
CLEAN TRANSMISSION CASE BREATHER	4-66
LUBRICATING.....	4-66
REPLACE CORROSION RESISTOR CARTRIDGE	4-67
CHECK, GREASE COMPRESSOR DRIVE BELT TENSION PULLEY ASSEMBLY FOR ALTERNATOR, AIR CONDITIONER	4-68
EVERY 2000 HOURS SERVICE	4-69
CHANGE OIL IN HYDRAULIC TANK, REPLACE HYDRAULIC FILTER ELEMENT.....	4-69
CLEAN HYDRAULIC TANK STRAINER	4-71
REPLACE HYDRAULIC TANK BREATHER ELEMENT	4-72
CHANGE AXLE OIL	4-72
REPLACE ELEMENT IN AIR CONDITIONER RECIRCULATION AIR FILTER, FRESH AIR FILTER	4-73
CLEAN PPC CIRCUIT STRAINER.....	4-74
CHECK ALTERNATOR	4-74
CHECK ENGINE VALVE CLEARANCE, ADJUST	4-74
CHECK BRAKE DISC WEAR.....	4-74
CHECKING FUNCTION OF ACCUMULATOR	4-75
CHECK BOOST PIPING CLAMPS.....	4-75
CHANGE OIL FOR WORK EQUIPMENT PINS	4-76

CONTENTS

EVERY 4000 HOURS SERVICE	4-77
CHECK WATER PUMP	4-77
CHECK STARTING MOTOR.....	4-77
CHECK AIR CONDITIONER COMPRESSOR, ADJUST	4-77
LUBRICATING.....	4-77
CHECK FOR LOOSE ENGINE HIGH-PRESSURE PIPING CLAMPS, HARDENING OF RUBBER	4-79
CHECKING FOR MISSING FUEL SPRAY PREVENTION CAP, HARDENING OF RUBBER	4-80
EVERY 8000 HOURS SERVICE	4-81
REPLACE ENGINE HIGH-PRESSURE PIPING CLAMPS	4-81
REPLACE FUEL SPRAY PREVENTION CAP	4-81
OVERHAUL STARTING MOTOR AND ALTERNATOR.....	4-81

SPECIFICATIONS

SPECIFICATIONS	5-2
-----------------------------	------------

ATTACHMENTS, OPTIONS

HANDLING STEERING WHEEL SPECIFICATION MACHINE	6-2
EXPLANATION OF COMPONENTS	6-2
SWITCHES, FRONT PANEL, STEERING WHEEL SWITCH, REAR BOX.....	6-2
CONTROL LEVERS, PEDALS.....	6-8
STEERING TILT LEVER	6-11
FUNCTIONS OF STEERING WHEEL SPECIFICATION MACHINE.....	6-12
CHANGING GEAR SPEED	6-12
CHANGING DIRECTION.....	6-13
TURNING	6-15
MOVING MACHINE OFF (MACHINES EQUIPPED WITH STEERING WHEEL)	6-16
METHOD OF STOPPING, PARKING MACHINE (MACHINES EQUIPPED WITH STEERING WHEEL).....	6-19
SELECTING BUCKET AND TIRES	6-21
STARTING IN COLD AREAS	6-22
ELECTRIC HEATER.....	6-22
PROCEDURE FOR SETTING UP EXTERNAL POWER SOURCE FOR EXTERNAL POWER SOURCE TYPE ELECTRIC HEATER.....	6-22
MANUFACTURING EXTERNAL POWER SOURCE INPUT CABLE	6-24
ESTABLISHING POWER SUPPLY	6-25
CHECK ACTUATION AFTER COMPLETION OF ASSEMBLY.....	6-25
HANDLING LOAD METER	6-26
OUTLINE OF LOAD METER	6-26
PRINCIPLE OF LOAD METER MEASUREMENT.....	6-27
POINTS TO REMEMBER TO ENSURE HIGH ACCURACY.....	6-28
USING LOAD METER	6-30