

VEAM920100

# Operation & Maintenance Manual

# WA380-5H

## WHEEL LOADER

SERIAL NUMBERS WA380H50051 AND UP



### DANGER

Incorrect operation and maintenance of this machine may be hazardous and cause injuries. The operator and maintenance personnel must read this manual before commencing operation or maintenance. Keep this manual within reach at all times and ensure that operating personnel read it at regular intervals.

### NOTE

Komatsu has had the operating and maintenance instructions translated into all the languages of the European Union. Should you require a copy in another language please inquire at your local dealer's.

# KOMATSU



# **FOREWORD**

## FOREWORD

This manual provides rules and guidelines which will help you use this machine safely and effectively. The precautions in this manual must be followed at all times when performing operation and maintenance. Most accidents are caused by the failure to follow fundamental safety rules for the operation and maintenance of machines. Accidents can be prevented by knowing beforehand conditions that may cause hazard when performing operation and maintenance.

### **WARNING**

**Operators and maintenance personnel must always do as follows before beginning operation or maintenance.**

- **Always be sure to read and understand this manual thoroughly before performing operation and maintenance.**
- **Read the safety messages given in this manual and the safety labels affixed to the machine thoroughly and be sure that you understand them fully.**

**Keep this manual at the storage location for the Operation and Maintenance Manual given below, and have all personnel read it periodically.**

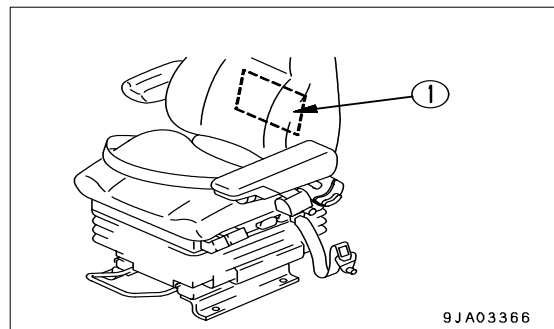
**If this manual has been lost or has become dirty and cannot be read, request a replacement manual immediately from Komatsu or your Komatsu distributor.**

**If you sell the machine, be sure to give this manual to the new owners together with the machine.**

**Komatsu delivers machines that comply with all applicable regulations and standards of the country to which it has been shipped. If this machine has been purchased in another country or purchased from someone in another country, it may lack certain safety devices and specifications that are necessary for use in your country. If there is any question about whether your product complies with the applicable standards and regulations of your country, consult Komatsu or your Komatsu distributor before operating the machine.**

Storage location for the Operation and Maintenance Manual:

Pocket (1) at rear of operator's seat



9JA03366



## SAFETY INFORMATION

To enable you to use this machine safely, safety precautions and labels are given in this manual and affixed to the machine to give explanations of situations involving potential hazards and of the methods of avoiding such situations.

### Signal words

The following signal words are used to inform you that there is a potential hazardous situation that may lead to personal injury or damage.

In this manual and on machine labels, the following signal words are used to express the potential level of hazard.



Indicates an imminently hazardous situation which, if not avoided, will result in death or serious injury. This signal word is to be limited to most extreme situations.



Indicates a potentially hazardous situation which, if not avoided, could result in death or serious injury.



Indicates a potentially hazardous situation which, if not avoided, may result in minor or moderate injury. It may also be used to alert against unsafe practices.

### Example of safety message using signal word



**When standing up from the operator's seat, always place the safety lock lever in the LOCK position. If you accidentally touch the levers when they are not locked, this may cause a serious injury or damage.**

### Other signal words

In addition to the above, the following signal words are used to indicate precautions that should be followed to protect the machine or to give information that is useful to know.

#### NOTICE

This word is used for precautions that must be taken to avoid actions which could shorten the life of the machine.

#### REMARKS

This word is used for information that is useful to know.

**Safety labels**

Safety labels are affixed to the machine to inform the operator or maintenance worker on the spot when carrying out operation or maintenance of the machine that may involve hazard.

This machine uses “Safety labels using words” and “Safety labels using pictograms” to indicate safety procedures.

**Safety labels using pictogram**

Safety pictograms use a picture to express a level of hazardous condition equivalent to the signal word. These safety pictograms use pictures in order to let the operator or maintenance worker understand the level and type of hazardous condition at all times. Safety pictograms show the type of hazardous condition at the top or left side, and the method of avoiding the hazardous condition at the bottom or right side. In addition, the type of hazardous condition is displayed inside a triangle and the method of avoiding the hazardous condition is shown inside a circle.



Komatsu cannot predict every circumstance that might involve a potential hazard in operation and maintenance. Therefore, the safety messages in this manual and on the machine may not include all possible safety precautions.

If any procedures or actions not specifically recommended or allowed in this manual are used, it is your responsibility to take the necessary steps to ensure safety.

In no event should you engage in prohibited uses or actions described in this manual.

The explanations, values, and illustrations in this manual were prepared based on the latest information available at that time. Continuing improvements in the design of this machine can lead to changes in detail which may not be reflected in this manual. Consult Komatsu or your Komatsu distributor for the latest available information of your machine or for questions regarding information in this manual.

The numbers in circles in the illustrations correspond to the numbers in ( ) in the text. (For example: ① -> (1))

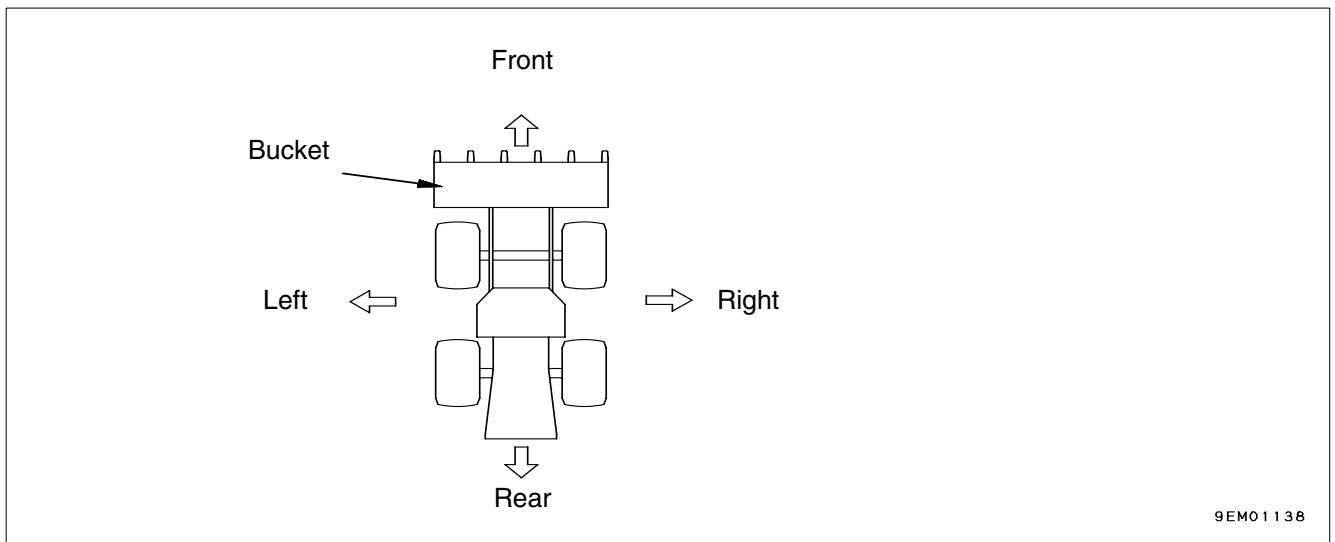
## INTRODUCTION

This Komatsu machine is designed to be used mainly for the following work:

- Digging work
- Smoothing
- Pushing work
- Loading work

For details of the operating procedure, see "WORKING POSSIBILITY ( 3-97 )".

## DIRECTIONS OF MACHINE



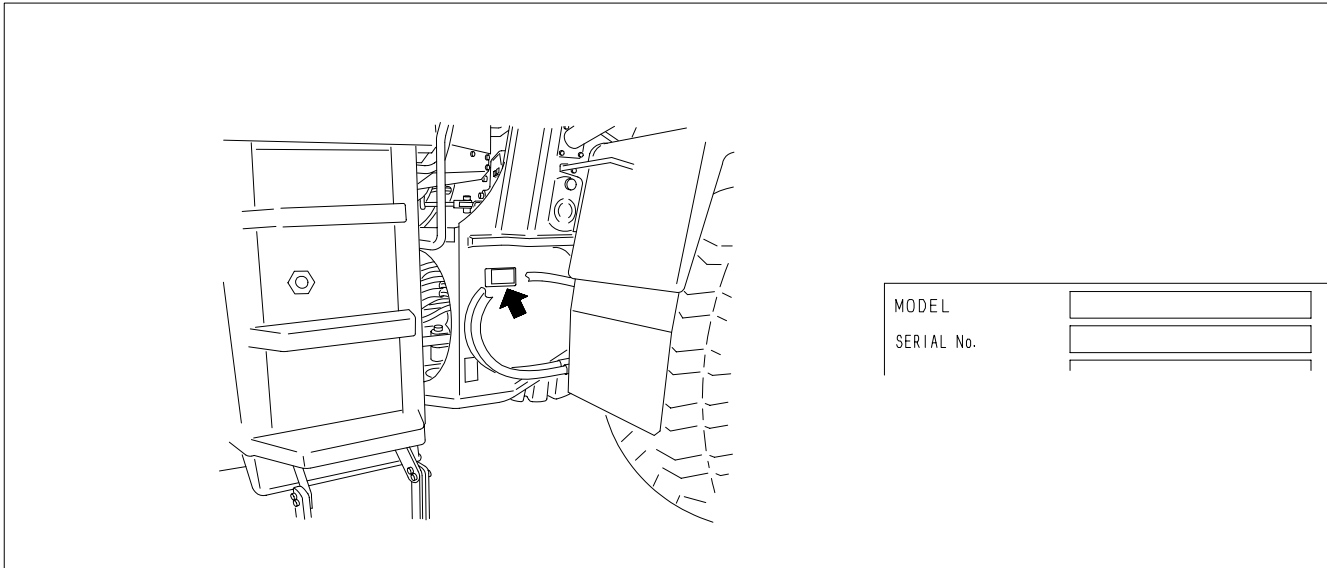
In this manual, the directions of the machine (front, rear, left, right) are determined according to the view from the operator's seat in the direction of travel (front) of the machine.

# NECESSARY INFORMATION

When requesting service or ordering replacement parts, please inform your Komatsu distributor of the following items.

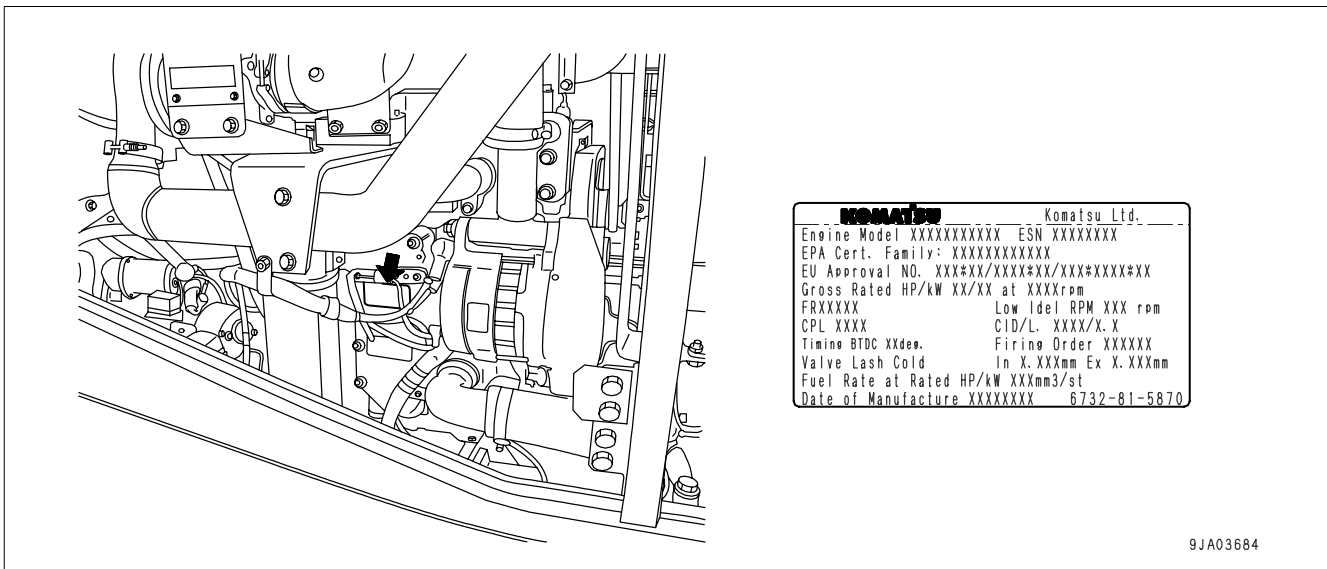
## MACHINE SERIAL NO. PLATE AND POSITION

On the center right of the front frame.



## ENGINE SERIAL NO. PLATE AND POSITION

This name plate is affixed on the oil cooler at the side of engine cylinder block on the left side of machine.



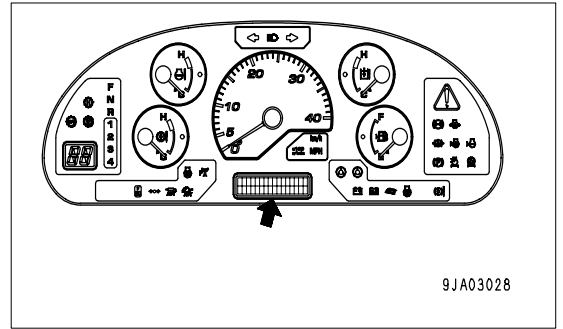
EPA: Environmental Protection Agency, U.S.A.

9JA03684

**POSITION OF SERVICE METER**

It is at the center bottom of the machine monitor.

For details of the service meter display, see SERVICE METER in EXPLANATION OF COMPONENTS “SERVICE METER ( 3-8 )”.



**TABLE TO ENTER SERIAL NO. AND DISTRIBUTOR**

Machine serial No.	
Engine serial No.	
Distributor name	
Address	
Service Personal	
Phone/Fax	

# CONTENTS

## FOREWORD

**FOREWORD** ..... 1-2

**SAFETY INFORMATION** ..... 1-3

**INTRODUCTION** ..... 1-5

    DIRECTIONS OF MACHINE ..... 1-5

**NECESSARY INFORMATION** ..... 1-6

    MACHINE SERIAL NO. PLATE AND POSITION ..... 1-6

    ENGINE SERIAL NO. PLATE AND POSITION ..... 1-6

    POSITION OF SERVICE METER ..... 1-7

    TABLE TO ENTER SERIAL NO. AND DISTRIBUTOR ..... 1-7

**CONTENTS** ..... 1-8

## SAFETY

**SAFETY** ..... 2-2

**SAFETY LABELS** ..... 2-4

    LOCATION OF SAFETY LABELS ..... 2-4

    SAFETY LABELS ..... 2-5

**GENERAL PRECAUTIONS** ..... 2-6

**PRECAUTIONS FOR OPERATION** ..... 2-14

    STARTING ENGINE ..... 2-14

    OPERATION ..... 2-15

    TRANSPORTATION ..... 2-21

    BATTERY ..... 2-22

    TOWING ..... 2-24

**PRECAUTIONS FOR MAINTENANCE** ..... 2-25

**PRECAUTIONS WITH TIRES** ..... 2-32

## OPERATION

**GENERAL VIEW** ..... 3-2

    GENERAL VIEW OF MACHINE ..... 3-2

    GENERAL VIEW OF CONTROLS AND GAUGES ..... 3-3

**EXPLANATION OF COMPONENTS** ..... 3-6

    MACHINE MONITOR ..... 3-6

        TYPES OF WARNING ..... 3-7

        CENTRAL WARNING LAMP ..... 3-7

        CHARACTER DISPLAY PORTION ..... 3-8

        EMERGENCY STOP ITEM ..... 3-14

        CAUTION ITEMS ..... 3-16

        INSPECTION AND MAINTENANCE ITEM ..... 3-18

        PILOT DISPLAY PORTION ..... 3-22

        METER DISPLAY PORTION ..... 3-26

        OTHER FUNCTIONS OF MACHINE MONITOR ..... 3-28

    SWITCHES ..... 3-33

    CONTROL LEVERS, PEDALS ..... 3-45

    STEERING TILT LOCK LEVER ..... 3-50

    CAP WITH LOCK ..... 3-51

        CAP WITH LOCK FOR THE FUEL TANK FILLER PORT ..... 3-51

CAP WITH LOCK FOR THE HYDRAULIC TANK FILLER PORT .....	3-52
SAFETY BAR.....	3-52
TOWING PIN .....	3-53
GREASE PUMP.....	3-53
CAB DOOR OPEN LOCK.....	3-54
CAB WINDOW OPEN LOCK.....	3-54
BACKUP ALARM.....	3-54
FUSE .....	3-55
FUSE CAPACITY AND NAME OF CIRCUIT .....	3-55
SLOW-BLOW FUSE .....	3-56
TAKING OFF POWER.....	3-57
AIR CONDITIONER.....	3-58
GENERAL LOCATIONS AND FUNCTION OF CONTROL PANEL .....	3-58
METHOD OF OPERATION .....	3-61
PRECAUTIONS WHEN USING.....	3-62
CAB WIPER.....	3-63
PREVENTING DAMAGE TO WIPER ARM BRACKET .....	3-63
DUST INDICATOR .....	3-63
<b>OPERATION.....</b>	<b>3-64</b>
CHECK BEFORE STARTING .....	3-64
WALK-AROUND CHECK .....	3-64
CHECK BEFORE STARTING .....	3-67
ADJUSTMENT BEFORE STARTING.....	3-72
OPERATIONS BEFORE STARTING .....	3-76
STARTING ENGINE.....	3-78
NORMAL STARTING .....	3-78
STARTING IN COLD WEATHER.....	3-80
CHECKS AFTER STARTING.....	3-82
BREAKING IN THE MACHINE.....	3-82
NORMAL OPERATION .....	3-82
STOPPING ENGINE.....	3-84
CHECKS AFTER STOPPING ENGINE.....	3-84
MOVING MACHINE OFF (DIRECTIONAL, SPEED), STOPPING .....	3-85
PREPARATIONS FOR MOVING MACHINE.....	3-85
CHANGING GEAR SPEED .....	3-88
CHANGING DIRECTION.....	3-89
STOPPING MACHINE.....	3-91
TRANSMISSION CUT-OFF.....	3-92
TURNING.....	3-94
EMERGENCY STEERING .....	3-94
OPERATION OF WORK EQUIPMENT .....	3-96
WORKING POSSIBILITY .....	3-97
DIGGING OPERATIONS.....	3-97
LEVELING OPERATIONS.....	3-100
PUSHING OPERATION .....	3-100
LOAD AND CARRY OPERATIONS .....	3-100
LOADING OPERATIONS.....	3-101
PRECAUTIONS FOR OPERATION .....	3-103
PERMISSIBLE WATER DEPTH.....	3-103
IF WHEEL BRAKE DOES NOT WORK.....	3-103
PRECAUTIONS WHEN DRIVING UP OR DOWN SLOPES.....	3-103
PRECAUTIONS REGARDING BRAKE FUNCTION .....	3-104
ADJUSTING WORK EQUIPMENT .....	3-105
ADJUSTING BOOM KICKOUT.....	3-105
ADJUSTING BUCKET POSITIONER.....	3-106
BUCKET LEVEL INDICATOR .....	3-106
PARKING MACHINE .....	3-107
CHECKS AFTER WORK .....	3-109
LOCKING.....	3-109

HANDLING THE TIRES..... 3-110  
 PRECAUTIONS WHEN HANDLING TIRES ..... 3-110  
 TIRE PRESSURE ..... 3-110  
 PRECAUTIONS FOR USING LOAD AND CARRY METHOD..... 3-111  
**TRANSPORTATION**..... 3-112  
 TRANSPORTATION PROCEDURE ..... 3-112  
 LOADING, UNLOADING WORK WITH TRAILERS ..... 3-112  
 LOADING..... 3-112  
 SECURING MACHINE ..... 3-113  
 UNLOADING..... 3-113  
 LIFTING MACHINE..... 3-114  
 LOCATION OF LIFTING POSITION MARK ..... 3-115  
 WEIGHT TABLE ..... 3-115  
 LIFTING PROCEDURE ..... 3-116  
**COLD WEATHER OPERATION** ..... 3-117  
 LOW TEMPERATURE..... 3-117  
 FUEL AND LUBRICANTS ..... 3-117  
 COOLANT..... 3-117  
 BATTERY ..... 3-118  
 AFTER COMPLETION OF WORK ..... 3-118  
 AFTER COLD WEATHER ..... 3-118  
 WARMING-UP OF STEERING HYDRAULIC..... 3-119  
**LONG-TERM STORAGE**..... 3-120  
 BEFORE STORAGE..... 3-120  
 DURING STORAGE ..... 3-120  
 AFTER STORAGE..... 3-120  
**TROUBLESHOOTING**..... 3-121  
 WHEN MACHINE RUNS OUT OF FUEL..... 3-121  
 TOWING THE MACHINE..... 3-122  
 WHEN ENGINE CAN BE USED ..... 3-122  
 WHEN ENGINE CANNOT BE USED ..... 3-123  
 RELEASING PARKING BRAKE ..... 3-123  
 EMERGENCY TRAVEL OPERATION..... 3-125  
 BATTERY IS DISCHARGED ..... 3-126  
 REMOVAL AND INSTALLATION OF BATTERY..... 3-126  
 PRECAUTIONS FOR CHARGING BATTERY ..... 3-127  
 STARTING ENGINE WITH BOOSTER CABLE ..... 3-127  
 OTHER TROUBLE..... 3-129  
 ELECTRICAL SYSTEM ..... 3-129  
 CHASSIS ..... 3-130  
 ENGINE ..... 3-132

**MAINTENANCE**

**GUIDES TO MAINTENANCE**..... 4-2  
**OUTLINES OF SERVICE** ..... 4-4  
 OIL, FUEL, COOLANT, AND PERFORMING OIL CLINIC ..... 4-4  
 OIL ..... 4-4  
 FUEL..... 4-4  
 COOLANT..... 4-4  
 GREASE ..... 4-4  
 CARRYING OUT KOWA (Komatsu Oil Wear Analysis) ..... 4-5  
 STORING OIL AND FUEL ..... 4-5  
 FILTERS ..... 4-6  
 OUTLINE OF ELECTRIC SYSTEM..... 4-6  
**WEAR PARTS** ..... 4-7  
 WEAR PARTS LIST ..... 4-7



**FUEL, COOLANT AND LUBRICANTS** ..... 4-8  
 PROPER SELECTION OF FUEL, COOLANT AND LUBRICANTS ..... 4-8  
**STANDARD TIGHTENING TORQUES** ..... 4-13  
**PERIODIC REPLACEMENT OF SAFETY CRITICAL PARTS** ..... 4-14  
**MAINTENANCE SCHEDULE CHART** ..... 4-16  
 MAINTENANCE SCHEDULE CHART ..... 4-16  
**SERVICE PROCEDURE** ..... 4-18  
 INITIAL 250 HOURS SERVICE ..... 4-18  
 INITIAL 1000 HOURS SERVICE ..... 4-18  
 WHEN REQUIRED ..... 4-19  
     CHECK, CLEAN, OR REPLACE AIR CLEANER ELEMENT ..... 4-19  
     CLEAN INSIDE OF COOLING SYSTEM..... 4-22  
     CHECK WATER SEPARATOR ..... 4-25  
     CHECK TRANSMISSION OIL LEVEL, ADD OIL..... 4-26  
     CHECK AXLE OIL LEVEL, ADD OIL..... 4-27  
     CLEAN AXLE CASE BREATHER ..... 4-28  
     CLEAN CONDENSER OF AIR CONDITIONER..... 4-28  
     CHECK WINDOW WASHING FLUID LEVEL, ADD FLUID..... 4-29  
     CLEAN RADIATOR FINS AND COOLER FINS ..... 4-29  
     CHECK ELECTRICAL INTAKE AIR HEATER..... 4-32  
     REPLACE BOLT ON CUTTING EDGE ..... 4-32  
     REPLACE BUCKET TEETH..... 4-33  
     CHECK AIR CONDITIONER ..... 4-34  
     REPLACE SLOW-BLOW FUSE ..... 4-35  
     SELECTION AND INSPECTION OF TIRES ..... 4-36  
 CHECK BEFORE STARTING ..... 4-38  
 EVERY 50 HOURS SERVICE ..... 4-39  
     DRAIN WATER, SEDIMENT FROM FUEL TANK..... 4-39  
 EVERY 100 HOURS SERVICE ..... 4-40  
     CHECK OIL LEVEL IN HYDRAULIC TANK, ADD OIL..... 4-40  
     CLEAN ELEMENT IN AIR CONDITIONER FRESH AIR FILTER..... 4-41  
 EVERY 250 HOURS SERVICE ..... 4-42  
     CHECK BATTERY ELECTROLYTE LEVEL..... 4-42  
     CHECK PARKING BRAKE ..... 4-44  
     CHECK AIR CONDITIONER COMPRESSOR BELT TENSION, ADJUST ..... 4-44  
     CHECK FOR LOOSE WHEEL HUB NUTS, TIGHTEN ..... 4-45  
     CLEAN ELEMENT IN AIR CONDITIONER RECIRCULATION FILTER ..... 4-45  
 EVERY 500 HOURS SERVICE ..... 4-46  
     CHANGE OIL IN ENGINE OIL PAN, REPLACE ENGINE OIL FILTER CARTRIDGE ..... 4-46  
     REPLACE FUEL FILTER CARTRIDGE ..... 4-47  
 EVERY 1000 HOURS SERVICE ..... 4-48  
     CHANGE TRANSMISSION OIL AND FILTER, CLEAN STRAINER ..... 4-48  
     CLEAN TRANSMISSION CASE BREATHER ..... 4-49  
     CHECK TIGHTENING PARTS OF TURBOCHARGER..... 4-49  
     CHECK PLAY OF TURBOCHARGER ROTOR..... 4-49  
     CHECK ALTERNATOR DRIVING BELT TENSION AND REPLACEMENT..... 4-49  
     REPLACE CORROSION RESISTOR CARTRIDGE ..... 4-49  
 EVERY 2000 HOURS SERVICE ..... 4-50  
     CHANGE OIL IN HYDRAULIC TANK, REPLACE HYDRAULIC FILTER ELEMENT ..... 4-50  
     REPLACE HYDRAULIC TANK BREATHER ELEMENT ..... 4-52  
     CHANGE AXLE OIL..... 4-53  
     REPLACE ELEMENT IN AIR CONDITIONER RECIRCULATION AIR FILTER, FRESH AIR FILTER .... 4-53  
     CLEAN PPC CIRCUIT STRAINER..... 4-54  
     CLEAN ENGINE BREATHER ELEMENT..... 4-54  
     CHEK ALTERNATOR, STARTING MOTOR ..... 4-54  
     CHECK ENGINE VALVE CLEARANCE, ADJUST ..... 4-54  
     CLEAN AND CHECK TURBOCHARGER ..... 4-54  
     CHECK INJECTOR ..... 4-55  
     CHECK ACCUMULATOR GAS PRESSURE ..... 4-55

CHECK VIBRATION DAMPER..... 4-55  
 CHECK BRAKE DISC WEAR..... 4-56  
 EVERY 4000 HOURS SERVICE ..... 4-57  
     LUBRICATING ..... 4-57  
     CHECK WATER PUMP ..... 4-57  
     CHECK AIR CONDITIONER COMPRESSOR, ADJUST ..... 4-58  
     REPLACE INJECTOR NOZZLE TIP ..... 4-58  
     CHECKING FOR LOOSENESS OF HIGH-PRESSURE CLAMP, HARDENING OF RUBBER ..... 4-58  
     CHECKING FOR MISSING FUEL SPRAY PREVENTION CAP, HARDENING OF RUBBER..... 4-58  
 EVERY 8000 HOURS SERVICE ..... 4-59  
     REPLACE HIGH-PRESSURE PIPING CLAMP..... 4-59  
     REPLACE FUEL SPRAY PREVENTION CAP ..... 4-59

**SPECIFICATIONS**

SPECIFICATIONS ..... 5-2

**ATTACHMENTS, OPTIONS**

**SELECTING BUCKET AND TIRES** ..... 6-2  
**HANDLING LOAD METER** ..... 6-3  
     GENERAL LOCATIONS ..... 6-3  
         MACHINE MONITOR WITH LOAD METER ..... 6-3  
         SWITCHES ..... 6-4  
     LOAD METER FUNCTIONS ..... 6-5  
     HANDLING LOAD METER DISPLAY ..... 6-8  
         SETTING ADDITION MODE ..... 6-8  
         SETTING REMAIN MODE ..... 6-10  
         TOTAL LOAD DATA DISPLAY ..... 6-12  
         STOPPING CALCULATION ..... 6-14  
         CARRYING OUT CALIBRATION (ADJUSTING 0 POINT) WHEN EMPTY ..... 6-15  
         CARRYING OUT CALIBRATION (ADJUSTING 0 POINT) WHEN LOADED ..... 6-17  
         SUBTRACTION FUNCTION..... 6-20  
     METHOD OF SETTING TIME ON CLOCK..... 6-22  
     PRINTER OUTPUT..... 6-24  
         PRINTOUT MODE..... 6-24  
         METHOD OF SELECTING PRINTOUT MODE ..... 6-25  
**HANDLING TORQUE CONVERTER LOCK-UP**..... 6-27  
     GENERAL LOCATIONS ..... 6-27  
     METHOD OF OPERATION ..... 6-28  
     WARNING/LIMIT FUNCTIONS FOR TRAVEL SPEED..... 6-29  
**HANDLING AUTOMATIC AIR-CONDITIONER** ..... 6-30  
     GENERAL LOCATIONS AND FUNCTIONS OF CONTROL PANEL ..... 6-30  
     METHOD OF OPERATION ..... 6-34  
     PRECAUTIONS WHEN USING..... 6-36  
     INSPECTION AND MAINTENANCE ..... 6-36  
**CENTRAL LUBRICATION** ..... 6-37  
     OPERATION ..... 6-37  
**JOYSTICK STEERING SYSTEM** ..... 6-38  
     COMPONENTS ..... 6-38  
         SHIFT UP, SHIFT DOWN SWITCHES ..... 6-38  
         F-N-R SWITCH ..... 6-39  
         JOYSTICK STEERING LEVER ..... 6-39  
         JOYSTICK ON/OFF SWITCH..... 6-39  
         HI/LOW SELECTOR SWITCH..... 6-39

HORN SWITCH ..... 6-40  
CONSOLE LOCK LEVER..... 6-40  
HEIGHT ADJUSTMENT LOCK LEVER..... 6-40  
ANGLE, FORE/AFT ADJUSTMENT LOCK LEVER ..... 6-40  
STRUCTURE AND FUNCTION..... 6-40  
GETTING IN OR OUT ..... 6-42  
ADJUSTMENT OF JOYSTICK CONSOLE..... 6-42  
OPERATION METHOD OF JOYSTICK STEERING SYSTEM ..... 6-43  
**EPC WORK EQUIPMENT LEVER** ..... 6-45  
OPERATIONAL FEATURES ..... 6-45  
SWITCHES ..... 6-45  
SAFETY LOCK LEVER (FOR WORK EQUIPMENT LEVER) ..... 6-46  
SEMI AUTO DIGGING OPERATIONS ..... 6-46  
SEMI AUTO DIGGING OPERATIONS ..... 6-46  
METHOD OF OPERATION ..... 6-47  
SELECTING DIGGING PATTERN ..... 6-47  
MANUAL OPERATION DURING AUTOMATIC CONTROL ..... 6-47  
END OF CONTROL ..... 6-47  
METHOD OF REMOTE POSITIONER ..... 6-47  
REMOTE POSITIONER RAISE MODE SWITCH..... 6-48  
REMOTE POSITIONER LOWER MODE SWITCH ..... 6-48  
REMOTE POSITIONER RAISE/LOWER SET SWITCH ..... 6-48  
METHOD OF OPERATION ..... 6-49

**INDEX**

**INDEX** ..... 7-1





# SAFETY



## **WARNING**

**Please be sure that you fully understand this manual and the precautions related to safety for the machine. When operating or servicing the machine, always follow these precautions strictly.**

---

# SAFETY

SAFETY LABELS.....	2-4
LOCATION OF SAFETY LABELS .....	2-4
SAFETY LABELS.....	2-5
GENERAL PRECAUTION	
SAFETY RULES .....	2-6
IF ABNORMALITIES ARE FOUND.....	2-6
CLOTHING AND PERSONAL PROTECTIVE ITEMS .....	2-6
FIRE EXTINGUISHER AND FIRST AID KIT .....	2-6
SAFETY FEATURES.....	2-6
KEEP MACHINE CLEAN.....	2-7
INSIDE OPERATOR'S COMPARTMENT.....	2-7
ALWAYS APPLY LOCK WHEN LEAVING OPERATOR'S SEAT .....	2-7
HANDRAILS AND STEPS .....	2-8
MOUNTING AND DISMOUNTING .....	2-8
NO PEOPLE ON ATTACHMENTS.....	2-8
DO NOT GET CAUGHT IN ARTICULATED PORTION.....	2-9
PREVENTION OF BURNS .....	2-9
FIRE PREVENTION.....	2-10
ACTION IF FIRE OCCURS.....	2-10
WINDOW WASHER LIQUID.....	2-10
PRECAUTIONS WHEN USING ROPS (Roll Over Protective Structure).....	2-11
PRECAUTIONS FOR ATTACHMENTS, OPTIONS .....	2-11
UNAUTHORIZED MODIFICATION .....	2-11
SAFETY AT WORKSITE .....	2-11
WORKING ON LOOSE GROUND.....	2-12
DO NOT GO CLOSE TO HIGH-VOLTAGE CABLES .....	2-12
ENSURE GOOD VISIBILITY .....	2-13
CHECKING SIGNALMAN'S SIGNALS AND SIGNS .....	2-13
EMERGENCY ESCAPE FROM OPERATOR'S CAB .....	2-13
ASBESTOS DUST HAZARD PREVENTION.....	2-13
PRECAUTIONS FOR OPERATION .....	2-14
BEFORE STARTING ENGINE .....	2-14
CHECKS BEFORE STARTING ENGINE .....	2-14
PRECAUTIONS WHEN STARTING.....	2-14
PRECAUTIONS IN COLD AREAS .....	2-14
OPERATION.....	2-15
CHECKS BEFORE STARTING ENGINE .....	2-15
CHECK WHEN TRAVELING FORWARD OR REVERSE.....	2-15
PRECAUTIONS WHEN TRAVELING.....	2-16
TRAVELING ON SLOPES.....	2-16
PROHIBITED OPERATIONS .....	2-17
PRECAUTIONS WHEN OPERATING.....	2-18
METHODS OF USING BRAKE .....	2-18
OPERATE CAREFULLY ON SNOW .....	2-19
PARKING MACHINE .....	2-19
TRANSPORTATION.....	2-21
LOADING AND UNLOADING.....	2-21
SHIPPING.....	2-21
BATTERY.....	2-22
BATTERY HAZARD PREVENTION .....	2-22
STARTING WITH BOOSTER CABLES.....	2-22
TOWING .....	2-24
WHEN TOWING .....	2-24

**SAFETY****SAFETY**

PRECAUTIONS FOR MAINTENANCE .....	2-25
WARNING TAG .....	2-25
KEEP WORK PLACE CLEAN AND TIDY .....	2-25
APPOINT LEADER WHEN WORKING WITH OTHERS .....	2-25
MAINTENANCE WITH ENGINE RUNNING .....	2-25
TWO WORKERS FOR MAINTENANCE WHEN ENGINE IS RUNNING .....	2-27
INSPECTION AND MAINTENANCE AFTER TURNING E.C.S.S. SWITCH OFF .....	2-27
PROPER TOOLS .....	2-27
ACCUMULATOR .....	2-28
PERSONNEL .....	2-28
ATTACHMENTS .....	2-28
WORK UNDER THE MACHINE .....	2-29
NOISE .....	2-29
PRECAUTIONS WHEN USING HAMMER .....	2-29
REPAIR WELDING .....	2-29
REMOVING BATTERY TERMINAL .....	2-29
PRECAUTIONS WITH HIGH-PRESSURE OIL .....	2-30
PRECAUTIONS FOR HIGH-PRESSURE FUEL .....	2-30
HANDLING HIGH-PRESSURE HOSES .....	2-30
WASTE MATERIALS .....	2-30
MAINTENANCE OF AIR CONDITIONER .....	2-30
COMPRESSED AIR .....	2-31
PERIODIC REPLACEMENT OF SAFETY CRITICAL PARTS .....	2-31
PRECAUTIONS WITH TIRES .....	2-32
HANDLING TIRES .....	2-32
PRECAUTIONS WHEN STORING TIRE .....	2-32