

## INTRODUZIONE

Per l'ordinazione dei ricambi, specificare il tipo di macchina e la matricola, la matricola del motore e la lettura del contaore.

Per facilitare l'interpretazione, le distinte dei ricambi sono così redatte:

<b>Numero di figura</b>	I numeri di figura non sono sequenziali.
<b>Descrizione</b>	Il segno « . » che precede la denominazione di un particolare, indica che lo stesso particolare fa parte di un assieme. Se il pezzo segnalato con « . » è a sua volta un assemblaggio (sottoassieme) i particolari sono segnalati con « . . ».
<b>Quantità</b>	Numero di pezzi utilizzati per l'assieme. Se il particolare è un sottoassieme, la quantità specifica il numero di pezzi necessari al suo assemblaggio. La sigla «AR» indica che il particolare viene fornito in quantità «come richiesta».
<b>Matricola</b>	Indica il numero di matricola del motore o della macchina a partire dalla quale e fino alla quale il particolare è stato utilizzato.
<b>Simboli</b>	<p>I simboli ed i codici specificati nelle colonne «Codice» e «Descrizione» indicano:</p> <ul style="list-style-type: none"> <li><input type="checkbox"/> Il particolare indicato nella riga successiva è applicabile al posto di questo.</li> <li><input checked="" type="checkbox"/> Questo particolare è applicabile al posto di quello indicato nella riga successiva.</li> <li>◆ Questo particolare e quello nella riga successiva sono intercambiabili.</li> <li>⊗ Questo particolare non è più fornito. Viene fornito in sostituzione il particolare della riga successiva.</li> <li>■ Il particolare specificato nella colonna «Descrizione» è applicabile al posto di questo se è usato come «Kit».</li> <li>▼ Questo particolare non è più fornito. Il particolare specificato nella colonna «Descrizione» è fornito in sostituzione come «Kit».</li> <li>△ Particolare fornito semifinito. Deve essere lavorato prima dell'uso.</li> </ul>

### Simboli

☆	Fornito come kit piuttosto che singolarmente.
★	Fornito come kit piuttosto che singolarmente. È fornito singolarmente solo da specifici rappresentanti.
⊙	Assieme. Questo particolare non è fornibile.
===	I particolari sottolineati da questa linea sono componenti dell'assieme specificato nella riga successiva.
DS	Particolare destro riferito all'Operatore che guarda la macchina dal posto di lavoro.
SN	Particolare sinistro riferito all'Operatore che guarda la macchina dal posto di lavoro.
G-1, G-2	Numero di assieme.
KIT	Kit particolari. Per i kit, fare riferimento alla tavola dei kit.
PAINT (1)	Il particolare è spedito verniciato con «antiruggine».
PAINT (2)	Il particolare può essere spedito di diversi colori.
(A)	Particolare specifico per climi freddi (A) (- 30°C).
(B)	Particolare specifico per climi freddi (B) (- 50°C).

**Questo catalogo contiene oltre agli accessori standard, anche gli accessori e le attrezzature opzionali.  
Per ordinare le parti di ricambio Vi preghiamo di contattare l'Officina autorizzata Komatsu Utility più vicina alla Vostra Sede.**

## FOREWORD

When ordering a part, please specify the model number, the engine serial number and the reading of the service meter.

For complete understanding, the parts list is written as follows:

Fig. number	Figure numbers are not continuous.
Description	« . » is put in front of the name of an assembly component and the item is entered next to the assembly. If a part marked with « . » is an assembly, its component is marked with « . . ».
Quantity	The number of pieces per set used for assembly is specified. For assembly or part group components, the number of pieces per assembly is specified. The symbol «AR» means that the part is supplied in quantity «as required».
Serial number	The engine or machine serial number in which the part is used.
Codes	The codes and part numbers specified in the «Part No.» and «Part Name» columns represent the following: <ul style="list-style-type: none"> <li><input type="checkbox"/> The part specified in the line above is applicable instead of this part.</li> <li><input checked="" type="checkbox"/> This part is applicable instead of the part specified in the line immediately above.</li> <li>◆ This part and the part specified in the line immediately above are interchangeable.</li> <li>⊗ This part is not supplied anymore. The part specified in the above line is supplied instead.</li> <li>■ The part specified in the «Part Name» column is applicable instead of this part if it is used as a set.</li> <li>▼ This part is not supplied anymore. The part specified in the «Part Name» column is supplied instead as a set.</li> <li>△ Part supplied as semi-finished. It must be reworked before use.</li> </ul>

### Codes

☆	Supplied as a set rather than singly.
★	Supplied as a set rather than singly. It is supplied singly by specific dealers only.
⊙	Part group. This part is not considered a supply part.
= = =	The parts surrounded by this line are components of the part group specified above.
R.H.	Right hand part referred as seen by the operator looking at the machine from the operator's seat.
L.H.	Left hand part referred as seen by the operator looking at the machine from the operator's seat.
G-1, G-2	Part group numbers.
KIT	Kit components. For kit components, please refer to the service kit table.
PAINT (1)	Parts shipped painted with undercoat.
PAINT (2)	Parts shipped with different colors.
(A)	Cold weather (A) spec. (– 30°C)
(B)	Cold weather (B) spec. (– 50°C)

**This parts list specifies not only standard accessories but also optional parts and attachments.  
To order a part, please contact your nearest Komatsu Utility dealer.**

## AVANT-PROPOS

Lorsque vous passez une commande pour une pièce détachée, vous êtes prié de spécifier le numéro du modèle, le numéro de série du moteur et la lecture du compteur de service.

Pour une complète compréhension, la liste des pièces est écrite comme suit:

Numéro de Fig.	Les numéros des figures ne sont pas corrélatifs.
Description	« . » est placé avant le nom de la composante d'assemblage et l'élément est entré à côté de l'assemblage. Si la pièce marquée d'un « . » est un assemblage, ses composantes sont marquées d'un « . ».
Quantité	Le nombre de pièces par jeu utilisé pour l'assemblage est spécifié. Pour l'assemblage ou groupe de pièces composantes, le nombre de pièces par assemblage est spécifié. La sigle AR indique que le détail est livré dans la quantité demandée.
Numéro de série	Le numéro de série du moteur ou machine dans lequel la pièce est utilisée.
Codifications	Les codifications et numéros de pièce spécifiés dans les colonnes «No. de Pièce» et «Nom de Pièce» représentent le suivant: <ul style="list-style-type: none"> <li><input type="checkbox"/> La pièce spécifiée dans la ligne ci-dessus est applicable au lieu de cette pièce.</li> <li><input checked="" type="checkbox"/> Cette pièce est applicable au lieu de la pièce spécifiée dans la ligne immédiatement au-dessus.</li> <li>◆ Cette pièce et la pièce spécifiée dans la ligne immédiatement au-dessus sont interchangeables.</li> <li>⊗ Cette pièce n'est plus fournie. A sa place, la pièce spécifiée dans la ligne ci-dessus est fournie.</li> <li>■ La pièce spécifiée dans la colonne «Nom de Pièce» est applicable à la place de cette pièce lorsque la pièce est utilisée comme un jeu.</li> <li>▼ Cette pièce n'est plus fournie. La pièce spécifiée dans la colonne «Nom de Pièce» est fournie à sa place comme un jeu.</li> <li>△ Pièce fourni en semi-finition. Elle doit être usinée avant l'utilisation.</li> </ul>

## Codifications

☆	Fourni comme un jeu plutôt qu'en unité.
★	Fourni comme un jeu plutôt qu'en unité. Est fourni en unité seulement par des fournisseurs spécifiés.
⊙	Groupe de pièces. Cette pièce n'est pas considérée comme une pièce de fourniture.
= = =	Les pièces entourées de cette ligne sont composantes du groupe de pièces spécifié ci-dessus.
R.H.	Détail droit référé à l'Opérateur qui regarde la machine du poste de travail.
L.H.	Détail gauche référé à l'Opérateur qui regarde la machine du poste de travail.
G-1, G-2	Numéros de groupe de pièces.
KIT	Composants de trousse. Pour les composants de trousse, consultez la table des trousse de service.
PAINT (1)	Pièces expédiées avec une sous-couche de peinture.
PAINT (2)	Pièces expédiées en différentes couleurs.
(A)	Caract. temps froid (A) (- 30°C)
(B)	Caract. temps froid (B) (- 50°C)

**Cette liste de pièces ne spécifie pas seulement les accessoires standard, mais aussi les pièces et accessoires en option. Pour passer une commande de pièce, vous êtes prié de prendre contact avec votre fournisseur Komatsu Utility le plus proche.**

## VORWORT

Bei der Bestellung von Teilen bitte die Modellnummer, die Seriennummer des Motors und den Stand des Betriebsstundenzählers angeben.

Um Fehler bei der Bestellung zu vermeiden, die folgenden Hinweise beachten:

Bild Nr.	Die Bilder sind nicht fortlaufend nummeriert.
Beschreibung	Jedes Bauteil ist mit «. » gekennzeichnet und hinter der entsprechenden Baugruppe aufgeführt. Ist die Baugruppe selbst mit «. » gekennzeichnet, sind die entsprechenden Bauteile mit «. . » gekennzeichnet.
Menge	Die Anzahl der Teile für einen Satz ist vorgegeben. Bei Baugruppen und Aggregaten ist die Anzahl der Teile für eine Baugruppe angegeben. Die Abkürzung «AR» bedeutet, daß die Einzelteile in den Mengen «wie verlangt» geliefert werden.
Serien-Nr.	Die Serien-Nr. von Motor oder Maschine, in die das entsprechende Teil eingebaut wird.
Zeichen	Die in den Spalten «Teile-Nr.» und «Teile-Bezeichnung» verwendeten Zeichen haben folgende Bedeutung: <ul style="list-style-type: none"> <li><input type="checkbox"/> Dieses Teil kann anstelle des oben aufgeführten Teils verwendet werden.</li> <li><input checked="" type="checkbox"/> Diese Teil kann anstelle des in der vorangegangenen Zeile aufgeführten Teils verwendet werden.</li> <li>◆ Dieses Teil ist mit dem in der vorangegangenen Zeile aufgeführten Teil austauschbar.</li> <li>⊗ Dieses Teil kann nicht mehr geliefert werden. Es wird durch das obenaufgeführte Teil ersetzt.</li> <li>■ Dieses Teil kann durch das in der Spalte «Teilebezeichnung» aufgeführte Teil ersetzt werden, wenn das Teil zusammen mit anderen Teilen als Einheit verwendet wird.</li> <li>▼ Dieses Teil kann nicht mehr geliefert werden. Stattdessen wird die in Spalte «Teile-Bezeichnung» aufgeführte Einheit geliefert.</li> <li>△ Dieses Teil wird im vorbereiteten Zustand geliefert und muß vor dem Einbau nachbearbeitet werden.</li> </ul>

### Zeichen

☆	Dieses Teil wird nicht als Einzelteil, sondern nur als Bausatz geliefert.
★	Dieses Teil wird nicht als Einzelteil, sondern nur als Bausatz geliefert und kann nur über bestimmte Händler als Einzelteil bezogen werden.
⊙	Baugruppe; wird nicht zu den Ersatzteilen gerechnet.
= = =	Die Teile innerhalb dieser Markierung gehören zur oben aufgeführten Baugruppe.
R.H.	Rechtes Einzelteil: bezieht sich auf den Bediener, der an seinem Arbeitsplatz gegenüber der Maschine steht.
L.H.	Linkes Einzelteil: bezieht sich auf den Bediener, der an seinem Arbeitsplatz gegenüber der Maschine steht.
G-1, G-2	Baugruppen-Nr.
KIT	Dieses Teil ist nur als Satz erhältlich. Siehe Auflistung der als Satz gelieferten Ersatzteile.
PAINT (1)	Gelieferte Teile mit Grundierung.
PAINT (2)	Gelieferte Teile in unterschiedlichen Farben.
(A)	Spezifikation für kalte Witterung (- 30°C) (A)
(B)	Spezifikation für kalte Witterung (- 50°C) (B)

**In dieser Ersatzteilliste ist das Standard- und Sonderzubehör aufgeführt. Bestellungen nimmt Ihr zuständiger Komatsu Utility-Händler entgegen.**

## PROLOGO

Cuando solicite una parte, sírvase especificar el número de modelo, el número de serie del motor y la lectura del serviciómetro.

Para un completo entendimiento, la lista de partes está redactada de la siguiente manera:

Número de fig.	Los números de figura no son continuos.
Descripción	« . » se coloca enfrente del nombre de un componente de conjunto y el ítem es ingresado luego al conjunto. Si una parte marcada con « . » es un conjunto, su componente está marcado con « . . ».
Cantidad	Se especifica el número de piezas por juego utilizadas para un conjunto. Se especifica para un conjunto o componentes de grupo de parte, el número de piezas por conjunto. La sigla AR indica que la pieza se entrega en la cantidad especificada en el pedido.
Número de serie	El número de serie del motor o máquina en que se utiliza la parte.
Códigos	Los códigos y números de parte especificados en las columnas «No. de Parte» y «Nombre de Parte» representan lo siguiente: <ul style="list-style-type: none"> <li><input type="checkbox"/> La parte especificada en la línea anterior es aplicable en lugar de esta parte.</li> <li><input checked="" type="checkbox"/> Esta parte es aplicable en lugar de la parte especificada en la línea inmediatamente anterior.</li> <li>◆ Esta parte y la parte especificada en la línea inmediatamente anterior son intercambiables.</li> <li>⊗ Esta parte se ha dejado de suministrar. En lugar de ésta, se suministra la parte especificada en la línea anterior.</li> <li>■ La parte especificada en la columna «Nombre de Parte» es aplicable en lugar de esta parte si se utiliza como un conjunto.</li> <li>▼ Esta parte se ha dejado de suministrar. En lugar de ésta, se suministra la parte especificada en la columna «Nombre de Parte» como un conjunto.</li> <li>△ Parte suministrada como semi-terminada. Tiene que ser modificada antes del uso.</li> </ul>

## Códigos

☆	Suministrado como un conjunto en lugar de individualmente.
★	Suministrado como un conjunto en lugar de individualmente. En suministrado individualmente por distribuidores específicos solamente.
⊙	Grupo de parte. Esta parte no es considerada una parte de suministro.
= = =	Las partes rodeadas por esta línea son componentes del grupo de partes especificado antes.
R.H.	Pieza derecha que se refiere al operador que mira la máquina desde el puesto de trabajo.
L.H.	Pieza izquierda que se refiere al operador que mira la máquina desde el puesto de trabajo.
G-1, G-2	Números de grupo de partes.
KIT	Componentes de juego. Para componentes de juego, sírvase referirse al cuadro de juego de servicio.
PAINT (1)	Las piezas embarcadas tienen una primera mano de pintura.
PAINT (2)	Las piezas embarcadas son de diferentes colores.
(A)	Espec. Tiempo frio (A) (- 30°C)
(B)	Espec. Tiempo frio (B) (- 50°C)

**Esta lista de partes especifica no solamente accesorios normales sino también partes y accesorios opcionales. Para solicitar una parte, sírvase comunicarse con su distribuidor Komatsu Utility más cercano.**

## PREFÁCIO

Ao solicitar uma peça sobressalente, favor especificar o número do modelo, o número de série do motor e a leitura do medidor de serviço.

Para uma fácil compreensão, a lista de peças sobressalentes é indicada como segue:

Número do desenho	Os números dos desenhos nem sempre são contínuos.
Descrição	Todos os componentes e peças que compõem o conjunto levam o sinal «. » na frente do seu nome, e vêm discriminados em seguida ao nome do conjunto. Além disso, se o componente com o sinal «. » já for um conjunto, seus componentes vêm marcados com o sinal «. . ».
Quantidade	Está especificada a quantidade de componentes utilizados em um conjunto. Contudo, no caso de peças de montagem ou de grupo de peças, está especificada a quantidade de componentes por conjunto. A sigla «AR» indica que o particular é fornecido em quantidade «conforme ad pedido».
Número de série	Está especificado o número da série do motor ou da máquina no qual a peça sobressalente é usada.
Códigos	Os códigos e números de peças sobressalentes especificados na coluna do «Nº da Peça» e do «Nome de Peça» representa o seguinte:  <input type="checkbox"/> Pode-se usar a peça especificada na linha acima, no lugar desta.  <input checked="" type="checkbox"/> Esta peça pode ser usada no lugar da peça especificada na linha imediatamente acima.  ◆ Esta peça e aquela especificada na linha imediatamente acima são intercambiáveis.  <input checked="" type="checkbox"/> Esta peça não é mais fornecida. No lugar desta, é fornecida a peça especificada na linha imediatamente acima.  ■ A peça especificada na coluna de «Nome de Peça» pode ser utilizada no lugar desta, se aquela for usada como conjunto.  ▼ Esta peça não é mais fornecida. A peça especificada na coluna de «Nome da Peça» é fornecida no lugar desta, como conjunto.  △ Esta peça é fornecida como semi-acabada. Necessita de um trabalho adicional antes de sua utilização.

## Códigos

☆	Não é fornecida somente a peça, e sim em conjunto.
★	Não é fornecida somente a peça, e sim em conjunto. Porém, pode ser fornecida somente a revendedores especiais.
⊙	Especifica o grupo de peças. Estas peças não são consideradas peças de suprimento.
= = =	As peças circundadas com esta linha são componentes do grupo de peças especificadas acima.
R.H.	Particular direito referido ao operador que se ocupa da máquina desde o seu lugar de trabalho.
L.H.	Particular esquerdo referido ao operador que se ocupa de máquina desde o seu lugar de trabalho.
G-1, G-2	Número de grupo de peças.
KIT	Componentes de «Kits». Para peças que compõem o «Kit», favor consultar a tabela de «Kit» de serviço.
PAINT (1)	Peças embarcadas, pintadas com tinta base.
PAINT (2)	Peças embarcadas, pintadas com cores diferentes.
(A)	Tempo frio (A) esp. (- 30°C).
(B)	Tempo frio (A) esp. (- 50°C).

**Esta lista de peças sobressalentes especifica não apenas os acessórios padrões e sim também, as peças opcionais e os pertences. Para solicitar uma peça sobressalente, favor entrar em contato com o seu revendedor Komatsu Utility mais próximo.**

# INDEX

ENGINE UNIT .....	1	ENGINE UNIT, MOUNTING .....	B9999-005001 .....	44
ENGINE, GAUGE CYLINDER .....	A0100-001001 .....	ENGINE UNIT, EXHAUST MUFFLER RELATED PARTS .....	B9999-005002 .....	45
ENGINE, GEAR CASE .....	A0100-001002 .....	ENGINE UNIT, AIR CLEANER HOSE .....	B9999-005003 .....	46
ENGINE, FLYWHEEL HOUSING AND OIL PAN .....	A0100-001003 .....	ENGINE UNIT, DAMPER .....	B9999-005004 .....	47
ENGINE, CYLINDER HEAD .....	A0100-001004 .....	ENGINE UNIT, HARNESS MOUNTS .....	B9999-005005 .....	48
ENGINE, AIR INTAKE MANIFOLD AND AIR CLEANER .....	A0100-001005 .....	ENGINE UNIT, FOR CAB, PISTON PUMP, INNER PARTS (1/5) .....	B9999-005006 .....	49
ENGINE, EXHAUST MANIFOLD .....	A0100-001006 .....	ENGINE UNIT, FOR CAB, PISTON PUMP, INNER PARTS (2/5) .....	B9999-005007 .....	50
ENGINE, CAMSHAFT AND IDLE GEARSHAFT .....	A0100-001007 .....	ENGINE UNIT, FOR CAB, PISTON PUMP, INNER PARTS (3/5) .....	B9999-005008 .....	51
ENGINE, CRANKSHAFT AND PISTON .....	A0100-001008 .....	ENGINE UNIT, FOR CAB, PISTON PUMP, INNER PARTS (4/5) .....	B9999-005009 .....	52
ENGINE, LUBRICATING OIL SYSTEM .....	A0100-001009 .....	ENGINE UNIT, FOR CAB, PISTON PUMP, INNER PARTS (5/5) .....	B9999-005010 .....	53
ENGINE, WATER PUMP AND FAN .....	A0100-001010 .....	ENGINE UNIT, PISTON PUMP RELATED PARTS .....	B9999-005011 .....	54
ENGINE, INJECTION PUMP .....	A0100-001011 .....	ENGINE UNIT, SUCTION CIRCUIT .....	B9999-005012 .....	55
ENGINE, GOVERNOR .....	A0100-001012 .....	ENGINE UNIT, FOR CAB, HEATER PIPING .....	B9999-005013 .....	56
ENGINE, FUEL INJECTOR AND SPILL PIPE .....	A0100-001013 .....	ENGINE UNIT, FLOOR HARNESS CLAMP .....	B9999-005014 .....	57
ENGINE, FUEL FILTER PIPING .....	A0100-001014 .....	ENGINE UNIT, WITH AIR CONDITIONER, MOUNTING .....	B9999-006001 .....	58
ENGINE, STARTER .....	A0100-001015 .....	ENGINE UNIT, WITH AIR CONDITIONER, EXHAUST MUFFLER RELATED PARTS .....	B9999-006002 .....	59
ENGINE, ALTERNATOR .....	A0100-001016 .....	ENGINE UNIT, WITH AIR CONDITIONER, AIR CLEANER HOSE .....	B9999-006003 .....	60
ENGINE, GASKET KIT AND OPTIONAL PARTS .....	A0100-001017 .....	ENGINE UNIT, WITH AIR CONDITIONER, DAMPER .....	B9999-006004 .....	61
ENGINE, WITH AIR CONDITIONER, GAUGE CYLINDER .....	A0100-002001 .....	ENGINE UNIT, WITH AIR CONDITIONER, HARNESS MOUNTS .....	B9999-006005 .....	62
ENGINE, WITH AIR CONDITIONER, GEAR CASE .....	A0100-002002 .....	ENGINE UNIT, WITH AIR CONDITIONER, PISTON PUMP, INNER PARTS (1/6) .....	B9999-006006 .....	63
ENGINE, WITH AIR CONDITIONER, FLYWHEEL HOUSING AND OIL PAN .....	A0100-002003 .....	ENGINE UNIT, WITH AIR CONDITIONER, PISTON PUMP, INNER PARTS (2/6) .....	B9999-006007 .....	64
ENGINE, WITH AIR CONDITIONER, CYLINDER HEAD .....	A0100-002004 .....	ENGINE UNIT, WITH AIR CONDITIONER, PISTON PUMP, INNER PARTS (3/6) .....	B9999-006008 .....	65
ENGINE, WITH AIR CONDITIONER, AIR INTAKE MANIFOLD AND AIR CLEANER .....	A0100-002005 .....	ENGINE UNIT, WITH AIR CONDITIONER, PISTON PUMP, INNER PARTS (4/6) .....	B9999-006009 .....	66
ENGINE, WITH AIR CONDITIONER, EXHAUST MANIFOLD .....	A0100-002006 .....	ENGINE UNIT, WITH AIR CONDITIONER, PISTON PUMP, INNER PARTS (5/6) .....	B9999-006010 .....	67
ENGINE, WITH AIR CONDITIONER, CAMSHAFT AND IDLE GEARSHAFT .....	A0100-002007 .....	ENGINE UNIT, WITH AIR CONDITIONER, PISTON PUMP, INNER PARTS (6/6) .....	B9999-006011 .....	68
ENGINE, WITH AIR CONDITIONER, CRANKSHAFT AND PISTON .....	A0100-002008 .....	ENGINE UNIT, WITH AIR CONDITIONER, PISTON PUMP RELATED PARTS .....	B9999-006012 .....	69
ENGINE, WITH AIR CONDITIONER, LUBRICATING OIL SYSTEM .....	A0100-002009 .....	ENGINE UNIT, WITH AIR CONDITIONER, FLOOR HARNESS CLAMP .....	B9999-006013 .....	70
ENGINE, WITH AIR CONDITIONER, WATER PUMP AND FAN .....	A0100-002010 .....	ENGINE UNIT, WITH AIR CONDITIONER, HARNESS CLAMP .....	B9999-006014 .....	71
ENGINE, WITH AIR CONDITIONER, INJECTION PUMP .....	A0100-002011 .....	ENGINE UNIT, WITH AIR CONDITIONER, SUCTION CIRCUIT .....	B9999-006015 .....	72
ENGINE, WITH AIR CONDITIONER, GOVERNOR .....	A0100-002012 .....	ENGINE UNIT, WITH AIR CONDITIONER, HEATER PIPING .....	B9999-006016 .....	73
ENGINE, WITH AIR CONDITIONER, FUEL INJECTOR AND SPILL PIPE .....	A0100-002013 .....	ENGINE UNIT, WITH AIR CONDITIONER PIPING (1/2) .....	B9999-006017 .....	74
ENGINE, WITH AIR CONDITIONER, FUEL FILTER PIPING .....	A0100-002014 .....	ENGINE UNIT, WITH AIR CONDITIONER, PULLEY AND V-BELT .....	B9999-006018 .....	75
ENGINE, WITH AIR CONDITIONER, STARTER .....	A0100-002015 .....	ENGINE UNIT, WITH AIR CONDITIONER PIPING (2/2) .....	B9999-006019 .....	76
ENGINE, WITH AIR CONDITIONER, ALTERNATOR .....	A0100-002016 .....	ENGINE UNIT, WITH AIR CONDITIONER BRACKET .....	B9999-006020 .....	77
ENGINE, WITH AIR CONDITIONER, GASKET KIT AND OPTIONAL PARTS .....	A0100-002017 .....			
ENGINE RELATED PARTS .....	39	COOLING SYSTEM .....		79
ENGINE MOUNTS .....	B0100-002001 .....	COOLING SYSTEM, RADIATOR AND OIL COOLER .....	C0100-006001 .....	80
AIR CLEANER (1/3) .....	B0300-013001 .....	COOLING SYSTEM, PIPING .....	C0100-006002 .....	81
AIR CLEANER (2/3) .....	B0300-013002 .....	COOLING SYSTEM, COVER .....	C0100-006003 .....	82
AIR CLEANER (3/3) .....	B0300-013003 .....	COOLING SYSTEM, FAN NET .....	C0100-006004 .....	83
		COOLING SYSTEM, FOR AIR CONDITIONER, RADIATOR AND OIL COOLER .....	C0100-007001 .....	84

COOLING SYSTEM, FOR AIR CONDITIONER, PIPING .....	C0100-007002 .....	85	MAIN CONTROL VALVE, INNER PARTS (16/23) .....	H0120-037016 .....	129
COOLING SYSTEM, COVER .....	C0100-007003 .....	86	MAIN CONTROL VALVE, INNER PARTS (17/23) .....	H0120-037017 .....	130
COOLING SYSTEM, FOR AIR CONDITIONER, FAN NET .....	C0100-007004 .....	87	MAIN CONTROL VALVE, INNER PARTS (18/23) .....	H0120-037018 .....	131
COOLING SYSTEM, DRAIN LINE .....	C0100-007005 .....	88	MAIN CONTROL VALVE, INNER PARTS (19/23) .....	H0120-037019 .....	132
FUEL SYSTEM .....		89	MAIN CONTROL VALVE, INNER PARTS (20/23) .....	H0120-037020 .....	133
FUEL TANK, TANK RELATED PART .....	D0100-003001 .....	90	MAIN CONTROL VALVE, INNER PARTS (21/23) .....	H0120-037021 .....	134
FUEL TANK, PIPING .....	D0100-003002 .....	91	MAIN CONTROL VALVE, INNER PARTS (22/23) .....	H0120-037022 .....	135
FUEL TANK, FOR AIR CONDITIONER .....	D0100-004001 .....	92	MAIN CONTROL VALVE, INNER PARTS (23/23) .....	H0120-037023 .....	136
FUEL TANK, FOR AIR CONDITIONER, PIPING .....	D0100-004002 .....	93	MAIN CONTROL VALVE, CONNECTING PARTS (1/3) .....	H0120-037024 .....	137
ELECTRICAL SYSTEM .....		95	MAIN CONTROL VALVE, CONNECTING PARTS (2/3) .....	H0120-037025 .....	138
BATTERY .....	E0100-001001 .....	96	MAIN CONTROL VALVE, CONNECTING PARTS (3/3) .....	H0120-037026 .....	139
ELECTRIC WIRING, FOR PROPORTIONAL CONTROL LEVER, (1/2) .....	E0200-002001 .....	97	MAIN CONTROL VALVE, VALVE BRACKET .....	H0120-037027 .....	140
ELECTRIC WIRING, FOR PROPORTIONAL CONTROL LEVER, (2/2) .....	E0200-002002 .....	98	MAIN CONTROL VALVE, CONNECTING PARTS, ADDITIONAL VALVE .....	H0120-037028 .....	141
ELECTRIC WIRING, BATTERY CABLE AND RELAY BOX, FOR PROPORTIONAL CONTROL LEVER .....	E0200-002003 .....	99	MAIN CONTROL VALVE, P.P.C. LINES .....	H0120-037029 .....	142
ELECTRIC WIRING, FUEL CONTROL MOTOR, FOR PROPORTIONAL CONTROL LEVER .....	E0200-002004 .....	100	MAIN CONTROL VALVE, RETURN LINE (1/2) .....	H0120-037030 .....	143
ELECTRIC WIRING, FOR EU, MAIN HARNESS (1/2) .....	E0200-007001 .....	101	MAIN CONTROL VALVE, RETURN LINE (2/2) .....	H0120-037031 .....	144
ELECTRIC WIRING, FOR EU, MAIN HARNESS (2/2) .....	E0200-007002 .....	102	MAIN CONTROL VALVE, FLOOR, PPC HOSE CLAMP .....	H0120-037032 .....	145
ELECTRIC WIRING, BATTERY CABLE AND RELAY BOX, FOR PROPORTIONAL CONTROL LEVER .....	E0200-007003 .....	103	MAIN CONTROL VALVE, ATTACHMENT PIPING .....	H0120-037033 .....	146
ADDITIONAL WORK LIGHTS, FOR CAB, FRONT .....	E0310-001001 .....	104	MAIN CONTROL VALVE, DELIVERY CIRCUIT (1/2) .....	H0120-037034 .....	147
ADDITIONAL WORK LIGHTS, FOR CAB, FRONT AND REAR .....	E0310-002001 .....	105	MAIN CONTROL VALVE, DELIVERY CIRCUIT (2/2) .....	H0120-037035 .....	148
TRAVEL ALARM .....	E0420-001001 .....	106	MAIN CONTROL VALVE, DRAIN LINE (1/2) .....	H0120-037036 .....	149
TRAVEL ALARM, FOR AIR CONDITIONER .....	E0420-002001 .....	107	MAIN CONTROL VALVE, DRAIN LINE (2/2) .....	H0120-037037 .....	150
TRAVEL ALARM, FOR PROPORTIONAL CONTROL LEVER .....	E0420-003001 .....	108	MAIN CONTROL VALVE, MOUNTING .....	H0120-037038 .....	151
TRAVEL ALARM, FOR AIR CONDITIONER, FOR PROPORTIONAL CONTROL LEVER .....	E0420-004001 .....	109	MAIN CONTROL VALVE, SOLENOID VALVE, INNER PARTS .....	H0120-037039 .....	152
HYDRAULIC SYSTEM .....		111	MAIN CONTROL VALVE, SOLENOID VALVE .....	H0120-037040 .....	153
HYDRAULIC OIL TANK .....	H0110-002001 .....	112	MAIN CONTROL VALVE, ACCUMULATOR PIPING .....	H0120-037041 .....	154
HYDRAULIC OIL TANK, MOUNTS .....	H0110-002002 .....	113	MAIN CONTROL VALVE, INNER PARTS (1/23), WITH AUTO DECELERATOR .....	H0120-039001 .....	155
MAIN CONTROL VALVE, INNER PARTS (1/23) .....	H0120-037001 .....	114	MAIN CONTROL VALVE, INNER PARTS (2/23), WITH AUTO DECELERATOR .....	H0120-039002 .....	156
MAIN CONTROL VALVE, INNER PARTS (2/23) .....	H0120-037002 .....	115	MAIN CONTROL VALVE, INNER PARTS (3/23), WITH AUTO DECELERATOR .....	H0120-039003 .....	157
MAIN CONTROL VALVE, INNER PARTS (3/23) .....	H0120-037003 .....	116	MAIN CONTROL VALVE, INNER PARTS (4/23), WITH AUTO DECELERATOR .....	H0120-039004 .....	158
MAIN CONTROL VALVE, INNER PARTS (4/23) .....	H0120-037004 .....	117	MAIN CONTROL VALVE, INNER PARTS (5/23), WITH AUTO DECELERATOR .....	H0120-039005 .....	159
MAIN CONTROL VALVE, INNER PARTS (5/23) .....	H0120-037005 .....	118	MAIN CONTROL VALVE, INNER PARTS (6/23), WITH AUTO DECELERATOR .....	H0120-039006 .....	160
MAIN CONTROL VALVE, INNER PARTS (6/23) .....	H0120-037006 .....	119	MAIN CONTROL VALVE, INNER PARTS (7/23), WITH AUTO DECELERATOR .....	H0120-039007 .....	161
MAIN CONTROL VALVE, INNER PARTS (7/23) .....	H0120-037007 .....	120	MAIN CONTROL VALVE, INNER PARTS (8/23), WITH AUTO DECELERATOR .....	H0120-039008 .....	162
MAIN CONTROL VALVE, INNER PARTS (8/23) .....	H0120-037008 .....	121	MAIN CONTROL VALVE, INNER PARTS (9/23), WITH AUTO DECELERATOR .....	H0120-039009 .....	163
MAIN CONTROL VALVE, INNER PARTS (9/23) .....	H0120-037009 .....	122	MAIN CONTROL VALVE, INNER PARTS (10/23), WITH AUTO DECELERATOR .....	H0120-039010 .....	164
MAIN CONTROL VALVE, INNER PARTS (10/23) .....	H0120-037010 .....	123	MAIN CONTROL VALVE, INNER PARTS (11/23), WITH AUTO DECELERATOR .....	H0120-039011 .....	165
MAIN CONTROL VALVE, INNER PARTS (11/23) .....	H0120-037011 .....	124	MAIN CONTROL VALVE, INNER PARTS (12/23), WITH AUTO DECELERATOR .....	H0120-039012 .....	166
MAIN CONTROL VALVE, INNER PARTS (12/23) .....	H0120-037012 .....	125	MAIN CONTROL VALVE, INNER PARTS (13/23), WITH AUTO DECELERATOR .....	H0120-039013 .....	167
MAIN CONTROL VALVE, INNER PARTS (13/23) .....	H0120-037013 .....	126	MAIN CONTROL VALVE, INNER PARTS (14/23), WITH AUTO DECELERATOR .....	H0120-039014 .....	168
MAIN CONTROL VALVE, INNER PARTS (14/23) .....	H0120-037014 .....	127	MAIN CONTROL VALVE, INNER PARTS (15/23), WITH AUTO DECELERATOR .....	H0120-039015 .....	169
MAIN CONTROL VALVE, INNER PARTS (15/23) .....	H0120-037015 .....	128	MAIN CONTROL VALVE, INNER PARTS (16/23), WITH AUTO DECELERATOR .....	H0120-039016 .....	170
			MAIN CONTROL VALVE, INNER PARTS (17/23), WITH AUTO DECELERATOR .....	H0120-039017 .....	171
			MAIN CONTROL VALVE, INNER PARTS (18/23), WITH AUTO DECELERATOR .....	H0120-039018 .....	172
			MAIN CONTROL VALVE, INNER PARTS (19/23), WITH AUTO DECELERATOR .....	H0120-039019 .....	173



MAIN CONTROL VALVE, INNER PARTS (20/23), WITH AUTO DECELERATOR.....	H0120-039020 ....	174	CAB, CAB IN PARTS, REAR COVER, FOR PROPORTIONAL CONTROL LEVER.....	K0210-003008 ....	219
MAIN CONTROL VALVE, INNER PARTS (21/23), WITH AUTO DECELERATOR.....	H0120-039021 ....	175	CAB, KOMATSU MARK, FOR PROPORTIONAL CONTROL LEVER.....	K0210-003009 ....	220
MAIN CONTROL VALVE, INNER PARTS (22/23), WITH AUTO DECELERATOR.....	H0120-039022 ....	176	CAB, FLOOR, BASE, FOR PROPORTIONAL CONTROL LEVER.....	K0210-003010 ....	221
MAIN CONTROL VALVE, INNER PARTS (23/23), WITH AUTO DECELERATOR.....	H0120-039023 ....	177	CAB, FLOOR, TRAVEL CONTROL, FOR PROPORTIONAL CONTROL LEVER.....	K0210-003011 ....	222
MAIN CONTROL VALVE, CONNECTING PARTS (1/3), WITH AUTO DECELERATOR.....	H0120-039024 ....	178	CAB, PPC VALVE FOR TRAVEL, FOR PROPORTIONAL CONTROL LEVER.....	K0210-003012 ....	223
MAIN CONTROL VALVE, CONNECTING PARTS (2/3), WITH AUTO DECELERATOR.....	H0120-039025 ....	179	CAB, FLOOR, PPC PIPING FOR TRAVEL VALVE, FOR PROPORTIONAL CONTROL LEVER.....	K0210-003013 ....	224
MAIN CONTROL VALVE, CONNECTING PARTS (3/3), WITH AUTO DECELERATOR.....	H0120-039026 ....	180	CAB, PPC VALVE FOR BOOM SWING, FOR PROPORTIONAL CONTROL LEVER.....	K0210-003014 ....	225
MAIN CONTROL VALVE, VALVE BRACKET, WITH AUTO DECELERATOR.....	H0120-039027 ....	181	CAB, BOOM SWING CONTROL, FOR PROPORTIONAL CONTROL LEVER.....	K0210-003015 ....	226
MAIN CONTROL VALVE, CONNECTING PARTS, ADDITIONAL VALVE, WITH AUTO DECELERATOR.....	H0120-039028 ....	182	CAB, FLOOR, P, T BLOCK AND SEAL, FOR PROPORTIONAL CONTROL LEVER.....	K0210-003016 ....	227
MAIN CONTROL VALVE, P.P.C. LINES, WITH AUTO DECELERATOR.....	H0120-039029 ....	183	CAB, FLOOR, CONSOLE, LHS, FOR PROPORTIONAL CONTROL LEVER.....	K0210-003017 ....	228
MAIN CONTROL VALVE, RETURN LINE, WITH AUTO DECELERATOR.....	H0120-039030 ....	185	CAB, PPC VALVE FOR WORK EQUIPMENT (1/2), FOR PROPORTIONAL CONTROL LEVER.....	K0210-003018 ....	229
MAIN CONTROL VALVE, FLOOR, PPC PIPING CLAMP, WITH AUTO DECELERATOR.....	H0120-039031 ....	186	CAB, PPC LINES, LHS, FOR PROPORTIONAL CONTROL LEVER.....	K0210-003019 ....	230
MAIN CONTROL VALVE, ATTACHMENT PIPING (1/2), WITH AUTO DECELERATOR.....	H0120-039032 ....	187	CAB, FLOOR, CONSOLE, RHS, FOR PROPORTIONAL CONTROL LEVER.....	K0210-003020 ....	231
MAIN CONTROL VALVE, ATTACHMENT PIPING (2/2), WITH AUTO DECELERATOR.....	H0120-039033 ....	188	CAB, PPC VALVE FOR WORK EQUIPMENT (2/2), FOR PROPORTIONAL CONTROL LEVER.....	K0210-003021 ....	232
MAIN CONTROL VALVE, HARNESS, WITH AUTO DECELERATOR.....	H0120-039034 ....	189	CAB, PPC LINES, RHS, FOR PROPORTIONAL CONTROL LEVER.....	K0210-003022 ....	233
MAIN CONTROL VALVE, DELIVERY CIRCUIT, WITH AUTO DECELERATOR.....	H0120-039035 ....	190	CAB, CAP, FOR PROPORTIONAL CONTROL LEVER.....	K0210-003023 ....	234
MAIN CONTROL VALVE, DRAIN LINE, WITH AUTO DECELERATOR.....	H0120-039036 ....	191	CAB, CAB IN PARTS, ELECTRIC WIRING, FOR PROPORTIONAL CONTROL LEVER.....	K0210-003024 ....	235
MAIN CONTROL VALVE, MOUNTING, WITH AUTO DECELERATOR.....	H0120-039037 ....	192	CAB, PPC VALVE FOR BLADE, FOR PROPORTIONAL CONTROL LEVER.....	K0210-003025 ....	236
MAIN CONTROL VALVE, SOLENOID VALVE, INNER PARTS, WITH AUTO DECELERATOR.....	H0120-039038 ....	193	CAB, BLADE CONTROL LEVER, FOR PROPORTIONAL CONTROL LEVER.....	K0210-003026 ....	237
MAIN CONTROL VALVE, SOLENOID VALVE PIPING, WITH AUTO DECELERATOR.....	H0120-039039 ....	194	CAB, COVER, FOR PROPORTIONAL CONTROL LEVER.....	K0210-003027 ....	238
MAIN CONTROL VALVE, ACCUMULATOR PIPING, WITH AUTO DECELERATOR.....	H0120-039040 ....	195	CAB, FLOOR, UNDER SHEET, FOR PROPORTIONAL CONTROL LEVER.....	K0210-003028 ....	239
SUCTION CIRCUIT.....	H0311-002001 ....	196	CAB, FOOT REST, FOR PROPORTIONAL CONTROL LEVER.....	K0210-003029 ....	240
ADDITIONAL ACTUATOR CIRCUIT, BOOM SWING CYLINDER, TRAVEL, SWING MOTOR.....	H1100-019001 ....	197	CAB, ATTACHMENT PIPING, FOR PROPORTIONAL CONTROL LEVER.....	K0210-003030 ....	241
ADDITIONAL ACTUATOR CIRCUIT, BOOM, ARM, BUCKET, ATTACHMENT PIPING.....	H1100-019002 ....	198	CAB, WRIST REST, FOR PROPORTIONAL CONTROL LEVER.....	K0210-003031 ....	242
ADDITIONAL ACTUATOR CIRCUIT, HOSE CLAMP.....	H1100-019003 ....	199	CAB, HEATER UNIT, FOR PROPORTIONAL CONTROL LEVER.....	K0210-003032 ....	243
BRACKET FOR PROPORTIONAL PRESSURE CONTROL (PPC) VALVE CIRCUIT.....	H1280-003001 ....	200	CAB, HEATER UNIT, FOR PROPORTIONAL CONTROL LEVER.....	K0210-003033 ....	244
FRAME AND ITS RELATED PARTS.....		201	CAB, FLOOR, TRAVEL CONTROL LEVER, FOR PROPORTIONAL CONTROL LEVER.....	K0210-003034 ....	245
REVOLVING FRAME.....	J1110-002001 ....	202	CAB, KOMTRAX TERMINAL AND ANTENNA, FOR PROPORTIONAL CONTROL LEVER.....	K0210-003035 ....	246
BOOM SWING BRACKET, (1/2).....	J1210-001001 ....	203	CAB, ROOM LAMP, FOR PROPORTIONAL CONTROL LEVER.....	K0210-003036 ....	247
BOOM SWING BRACKET, (2/2).....	J1210-001002 ....	204	CAB, CAB MOUNTS, FOR PROPORTIONAL CONTROL LEVER.....	K0210-003037 ....	248
BOOM SWING CYLINDER, INNER PARTS.....	J1220-001001 ....	205	CAB, CAB IN PARTS, FLOOR COVER, FOR PROPORTIONAL CONTROL LEVER.....	K0210-003038 ....	249
BOOM SWING CYLINDER, PIN.....	J1220-001002 ....	206	CAB, CUP HOLDER, FOR PROPORTIONAL CONTROL LEVER.....	K0210-003039 ....	250
SWING CIRCLE LUBRICATING.....	J1410-001001 ....	207	CAB, TRAVEL AND BLADE, FOR PROPORTIONAL CONTROL LEVER.....	K0210-003040 ....	251
OPERATOR'S COMPARTMENT AND CONTROL SYSTEM.....		209	CAB, CAB BODY AND WINDOW, WITH AIR CONDITIONER, FOR PROPORTIONAL CONTROL LEVER.....	K0210-004001 ....	252
OPERATOR'S SEAT, WITH 2-INCH SEAT BELT, (1/2).....	K0110-002001 ....	210	CAB, FRONT WINDOW, WITH AIR CONDITIONER, FOR PROPORTIONAL CONTROL LEVER.....	K0210-004002 ....	253
OPERATOR'S SEAT, WITH 2-INCH SEAT BELT, (2/2).....	K0110-002002 ....	211	CAB, FRONT WINDOW, WITH AIR CONDITIONER, FOR PROPORTIONAL CONTROL LEVER.....	K0210-004003 ....	254
CAB, CAB BODY AND WINDOW, FOR PROPORTIONAL CONTROL LEVER.....	K0210-003001 ....	212	CAB, DOOR, WITH AIR CONDITIONER, FOR PROPORTIONAL CONTROL LEVER.....	K0210-004004 ....	255
CAB, FRONT WINDOW, FOR PROPORTIONAL CONTROL LEVER.....	K0210-003002 ....	213	CAB, DOOR LOCK, WITH AIR CONDITIONER, FOR PROPORTIONAL CONTROL LEVER.....	K0210-004005 ....	256
CAB, FRONT LOWER WINDOW, FOR PROPORTIONAL CONTROL LEVER.....	K0210-003003 ....	214	CAB, OPEN LOCK AND DOOR CATCH, WITH AIR CONDITIONER, FOR PROPORTIONAL CONTROL LEVER.....	K0210-004006 ....	257
CAB, DOOR, FOR PROPORTIONAL CONTROL LEVER.....	K0210-003004 ....	215	CAB, CAB IN PARTS, ELECTRIC WIRING, WITH AIR CONDITIONER, FOR PROPORTIONAL CONTROL LEVER.....	K0210-004007 ....	258
CAB, DOOR LOCK, FOR PROPORTIONAL CONTROL LEVER.....	K0210-003005 ....	216	CAB, CAB IN PARTS, REAR COVER, WITH AIR CONDITIONER, FOR PROPORTIONAL CONTROL LEVER.....	K0210-004008 ....	259
CAB, OPEN LOCK AND DOOR CATCH, FOR PROPORTIONAL CONTROL LEVER.....	K0210-003006 ....	217	CAB, KOMATSU MARK, WITH AIR CONDITIONER, FOR PROPORTIONAL CONTROL LEVER.....	K0210-004009 ....	260
CAB, CAB IN PARTS, REAR COVER, FOR PROPORTIONAL CONTROL LEVER.....	K0210-003007 ....	218			

CAB, FLOOR, BASE, WITH AIR CONDITIONER, FOR PROPORTIONAL CONTROL LEVER.....	K0210-004010.....	261
CAB, FLOOR, TRAVEL CONTROL, WITH AIR CONDITIONER, FOR PROPORTIONAL CONTROL LEVER.....	K0210-004011.....	262
CAB, PPC VALVE FOR TRAVEL, WITH AIR CONDITIONER, FOR PROPORTIONAL CONTROL LEVER.....	K0210-004012	263
CAB, FLOOR, PPC PIPING FOR TRAVEL VALVE, WITH AIR CONDITIONER, FOR PROPORTIONAL CONTROL LEVER.....	K0210-004013	264
CAB, PPC VALVE FOR BOOM SWING, WITH AIR CONDITIONER, FOR PROPORTIONAL CONTROL LEVER.....	K0210-004014	265
CAB, BOOM SWING CONTROL, WITH AIR CONDITIONER, FOR PROPORTIONAL CONTROL LEVER.....	K0210-004015.....	266
CAB, FLOOR, P, T BLOCK AND SEAL, WITH AIR CONDITIONER, FOR PROPORTIONAL CONTROL LEVER.....	K0210-004016	267
CAB, FLOOR, CONSOLE, LHS, WITH AIR CONDITIONER, FOR PROPORTIONAL CONTROL LEVER.....	K0210-004017.....	268
CAB, PPC VALVE FOR WORK EQUIPMENT (1/2), WITH AIR CONDITIONER, FOR PROPORTIONAL CONTROL LEVER.....	K0210-004018.....	269
CAB, PPC LINES, LHS, WITH AIR CONDITIONER, FOR PROPORTIONAL CONTROL LEVER.....	K0210-004019.....	270
CAB, FLOOR, CONSOLE, RHS, WITH AIR CONDITIONER, FOR PROPORTIONAL CONTROL LEVER.....	K0210-004020.....	271
CAB, PPC VALVE FOR WORK EQUIPMENT (2/2), WITH AIR CONDITIONER, FOR PROPORTIONAL CONTROL LEVER.....	K0210-004021.....	272
CAB, PPC LINES, RHS, WITH AIR CONDITIONER, FOR PROPORTIONAL CONTROL LEVER.....	K0210-004022.....	273
CAB, CAP, WITH AIR CONDITIONER, FOR PROPORTIONAL CONTROL LEVER.....	K0210-004023.....	274
CAB, CAB IN PARTS, ELECTRIC PARTS, WITH AIR CONDITIONER, FOR PROPORTIONAL CONTROL LEVER.....	K0210-004024.....	275
CAB, PPC VALVE FOR BLADE, WITH AIR CONDITIONER, FOR PROPORTIONAL CONTROL LEVER.....	K0210-004025.....	276
CAB, BLADE CONTROL LEVER, WITH AIR CONDITIONER, FOR PROPORTIONAL CONTROL LEVER.....	K0210-004026	277
CAB, COVER, WITH AIR CONDITIONER, FOR PROPORTIONAL CONTROL LEVER.....	K0210-004027.....	278
CAB, FLOOR, UNDER SHEET, WITH AIR CONDITIONER, FOR PROPORTIONAL CONTROL LEVER.....	K0210-004028.....	279
CAB, FOOT REST, WITH AIR CONDITIONER, FOR PROPORTIONAL CONTROL LEVER.....	K0210-004029.....	280
CAB, ATTACHMENT PIPING, WITH AIR CONDITIONER, FOR PROPORTIONAL CONTROL LEVER.....	K0210-004030.....	281
CAB, WRIST REST, WITH AIR CONDITIONER, FOR PROPORTIONAL CONTROL LEVER.....	K0210-004031.....	282
CAB, AIR CONDITIONER UNIT (1/3), FOR PROPORTIONAL CONTROL LEVER.....	K0210-004032.....	283
CAB, AIR CONDITIONER INNER PARTS (1/3), FOR PROPORTIONAL CONTROL LEVER.....	K0210-004033.....	284
CAB, AIR CONDITIONER INNER PARTS (2/3), FOR PROPORTIONAL CONTROL LEVER.....	K0210-004034.....	285
CAB, AIR CONDITIONER INNER PARTS (3/3), FOR PROPORTIONAL CONTROL LEVER.....	K0210-004035.....	286
CAB, AIR CONDITIONER UNIT (2/3), FOR PROPORTIONAL CONTROL LEVER.....	K0210-004036.....	287
CAB, AIR CONDITIONER CONTROL PANEL, FOR PROPORTIONAL CONTROL LEVER.....	K0210-004037.....	288
CAB, AIR CONDITIONER UNIT (3/3), FOR PROPORTIONAL CONTROL LEVER.....	K0210-004038.....	289
CAB, FLOOR, TRAVEL CONTROL LEVER, WITH AIR CONDITIONER, FOR PROPORTIONAL CONTROL LEVER.....	K0210-004039.....	290
CAB, KOMTRAX TERMINAL AND ANTENNA, WITH AIR CONDITIONER, FOR PROPORTIONAL CONTROL LEVER.....	K0210-004040.....	291
CAB, ROOM LAMP, WITH AIR CONDITIONER, FOR PROPORTIONAL CONTROL LEVER.....	K0210-004041.....	292
CAB, CAB MOUNTS, WITH AIR CONDITIONER, FOR PROPORTIONAL CONTROL LEVER.....	K0210-004042.....	293
CAB, CAB IN PARTS, FLOOR COVER, WITH AIR CONDITIONER, FOR PROPORTIONAL CONTROL LEVER.....	K0210-004043	294
CAB, CUP HOLDER, WITH AIR CONDITIONER, FOR PROPORTIONAL CONTROL LEVER.....	K0210-004044.....	295
CAB, TRAVEL AND BLADE, WITH AIR CONDITIONER, FOR PROPORTIONAL CONTROL LEVER.....	K0210-004045.....	296
CAB, CAB BODY AND WINDOW, WITH AUTO DECELERATOR.....	K0210-005001.....	297

CAB, FRONT WINDOW, WITH AUTO DECELERATOR.....	K0210-005002.....	298
CAB, FRONT LOWER WINDOW, WITH AUTO DECELERATOR.....	K0210-005003.....	299
CAB, DOOR, WITH AUTO DECELERATOR.....	K0210-005004.....	300
CAB, DOOR LOCK, WITH AUTO DECELERATOR.....	K0210-005005.....	301
CAB, OPEN LOCK AND DOOR CATCH, WITH AUTO DECELERATOR.....	K0210-005006.....	302
CAB, CAB IN PARTS, ELECTRIC PARTS, WITH AUTO DECELERATOR.....	K0210-005007.....	303
CAB, CAB IN PARTS, REAR COVER, WITH AUTO DECELERATOR.....	K0210-005008.....	304
CAB, KOMATSU MARK, WITH AUTO DECELERATOR.....	K0210-005009.....	305
CAB, FLOOR, BASE, WITH AUTO DECELERATOR.....	K0210-005010.....	306
CAB, FLOOR, TRAVEL CONTROL, WITH AUTO DECELERATOR.....	K0210-005011.....	307
CAB, PPC VALVE FOR TRAVEL, WITH AUTO DECELERATOR.....	K0210-005012.....	308
CAB, FLOOR, PPC PIPING FOR TRAVEL VALVE, WITH AUTO DECELERATOR.....	K0210-005013.....	309
CAB, PPC VALVE FOR BOOM SWING, WITH AUTO DECELERATOR.....	K0210-005014.....	310
CAB, BOOM SWING CONTROL, WITH AUTO DECELERATOR.....	K0210-005015.....	311
CAB, FLOOR, P, T BLOCK AND SEAL, WITH AUTO DECELERATOR.....	K0210-005016.....	312
CAB, FLOOR, CONSOLE, LHS, WITH AUTO DECELERATOR.....	K0210-005017.....	313
CAB, PPC VALVE FOR WORK EQUIPMENT (1/2), WITH AUTO DECELERATOR.....	K0210-005018.....	314
CAB, PPC LINES, LHS, WITH AUTO DECELERATOR.....	K0210-005019.....	315
CAB, FLOOR, CONSOLE, RHS, WITH AUTO DECELERATOR.....	K0210-005020.....	316
CAB, PPC VALVE FOR WORK EQUIPMENT (2/2), WITH AUTO DECELERATOR.....	K0210-005021.....	317
CAB, PPC LINES, RHS, WITH AUTO DECELERATOR.....	K0210-005022.....	318
CAB, CAP, WITH AUTO DECELERATOR.....	K0210-005023.....	319
CAB, CAB IN PARTS, ELECTRIC WIRING, WITH AUTO DECELERATOR.....	K0210-005024.....	320
CAB, PPC VALVE FOR BLADE, WITH AUTO DECELERATOR.....	K0210-005025.....	321
CAB, BLADE CONTROL LEVER, WITH AUTO DECELERATOR.....	K0210-005026.....	322
CAB, COVER, WITH AUTO DECELERATOR.....	K0210-005027.....	323
CAB, FLOOR, UNDER SHEET, WITH AUTO DECELERATOR.....	K0210-005028.....	324
CAB, FOOT REST, WITH AUTO DECELERATOR.....	K0210-005029.....	325
CAB, ATTACHMENT PIPING, WITH AUTO DECELERATOR.....	K0210-005030.....	326
CAB, WRIST REST, WITH AUTO DECELERATOR.....	K0210-005031.....	327
CAB, HEATER DUCT, WITH AUTO DECELERATOR.....	K0210-005032.....	328
CAB, HEATER UNIT, WITH AUTO DECELERATOR.....	K0210-005033.....	329
CAB, FLOOR, TRAVEL CONTROL LEVER, WITH AUTO DECELERATOR.....	K0210-005034.....	330
CAB, KOMTRAX TERMINAL AND ANTENNA, WITH AUTO DECELERATOR.....	K0210-005035.....	331
CAB, ROOM LAMP, WITH AUTO DECELERATOR.....	K0210-005036.....	332
CAB, CAB MOUNTS, WITH AUTO DECELERATOR.....	K0210-005037.....	333
CAB, CAB IN PARTS, FLOOR COVER, WITH AUTO DECELERATOR.....	K0210-005038.....	334
CAB, CUP HOLDER, WITH AUTO DECELERATOR.....	K0210-005039.....	335
CAB, TRAVEL AND BLADE, WITH AUTO DECELERATOR.....	K0210-005040.....	336
CAB, CAB BODY AND WINDOW, WITH AIR CONDITIONER, WITH AUTO DECELERATOR.....	K0210-006001.....	337
CAB, FRONT WINDOW, WITH AIR CONDITIONER, WITH AUTO DECELERATOR.....	K0210-006002.....	338
CAB, FRONT LOWER WINDOW, WITH AIR CONDITIONER, WITH AUTO DECELERATOR.....	K0210-006003.....	339
CAB, DOOR LOCK, WITH AIR CONDITIONER, WITH AUTO DECELERATOR.....	K0210-006004.....	340
CAB, DOOR LOCK, WITH AIR CONDITIONER, WITH AUTO DECELERATOR.....	K0210-006005.....	341
CAB, OPEN LOCK AND DOOR CATCH, WITH AIR CONDITIONER, WITH AUTO DECELERATOR.....	K0210-006006.....	342
CAB, CAB IN PARTS, ELECTRIC PARTS, WITH AIR CONDITIONER, WITH AUTO DECELERATOR.....	K0210-006007.....	343

CAB, CAB IN PARTS, REAR COVER, WITH AIR CONDITIONER, WITH AUTO DECELERATOR.....	K0210-006008.....	344
CAB, KOMATSU MARK, WITH AIR CONDITIONER, WITH AUTO DECELERATOR.....	K0210-006009.....	345
CAB, FLOOR, BASE, WITH AIR CONDITIONER, WITH AUTO DECELERATOR.....	K0210-006010.....	346
CAB, FLOOR, TRAVEL CONTROL, WITH AIR CONDITIONER, WITH AUTO DECELERATOR.....	K0210-006011.....	347
CAB, PPC VALVE FOR TRAVEL, WITH AIR CONDITIONER, WITH AUTO DECELERATOR .....	K0210-006012.....	348
CAB, FLOOR, PPC PIPING FOR TRAVEL VALVE, WITH AIR CONDITIONER, WITH AUTO DECELERATOR ..	K0210-006013	349
CAB, PPC VALVE FOR BOOM SWING, WITH AIR CONDITIONER, WITH AUTO DECELERATOR.....	K0210-006014.....	350
CAB, BOOM SWING CONTROL, WITH AIR CONDITIONER, WITH AUTO DECELERATOR.....	K0210-006015.....	351
CAB, FLOOR, P, T BLOCK AND SEAL, WITH AIR CONDITIONER, WITH AUTO DECELERATOR.....	K0210-006016.....	352
CAB, FLOOR, CONSOLE, LHS, WITH AIR CONDITIONER, WITH AUTO DECELERATOR .....	K0210-006017.....	353
CAB, PPC VALVE FOR WORK EQUIPMENT (1/2), WITH AIR CONDITIONER, WITH AUTO DECELERATOR ..	K0210-006018	354
CAB, PPC LINES, LHS, WITH AIR CONDITIONER, WITH AUTO DECELERATOR.....	K0210-006019.....	355
CAB, FLOOR, CONSOLE, RHS, WITH AIR CONDITIONER, WITH AUTO DECELERATOR.....	K0210-006020.....	356
CAB, PPC VALVE FOR WORK EQUIPMENT (2/2), WITH AIR CONDITIONER, WITH AUTO DECELERATOR ..	K0210-006021	357
CAB, PPC LINES, LHS, WITH AIR CONDITIONER, WITH AUTO DECELERATOR.....	K0210-006022.....	358
CAB, CAP, WITH AIR CONDITIONER, WITH AUTO DECELERATOR.....	K0210-006023.....	359
CAB, CAB IN PARTS, ELECTRIC PARTS, WITH AIR CONDITIONER, WITH AUTO DECELERATOR....	K0210-006024.....	360
CAB, PPC VALVE FOR BLADE, WITH AIR CONDITIONER, WITH AUTO DECELERATOR.....	K0210-006025.....	361
CAB, BLADE CONTROL LEVER, WITH AIR CONDITIONER, WITH AUTO DECELERATOR.....	K0210-006026.....	362
CAB, COVER, WITH AIR CONDITIONER, WITH AUTO DECELERATOR.....	K0210-006027.....	363
CAB, FLOOR, UNDER SHEET, WITH AIR CONDITIONER, WITH AUTO DECELERATOR .....	K0210-006028.....	364
CAB, FOOT REST, WITH AIR CONDITIONER, WITH AUTO DECELERATOR .....	K0210-006029.....	365
CAB, ATTACHMENT PIPING, WITH AIR CONDITIONER, WITH AUTO DECELERATOR.....	K0210-006030.....	366
CAB, WRIST REST, WITH AIR CONDITIONER, WITH AUTO DECELERATOR .....	K0210-006031.....	367
CAB, AIR CONDITIONER UNIT (1/3), WITH AUTO DECELERATOR .....	K0210-006032.....	368
CAB, AIR CONDITIONER INNER PARTS (1/3), WITH AUTO DECELERATOR.....	K0210-006033.....	369
CAB, AIR CONDITIONER INNER PARTS (2/3), WITH AUTO DECELERATOR.....	K0210-006034.....	370
CAB, AIR CONDITIONER INNER PARTS (3/3), WITH AUTO DECELERATOR.....	K0210-006035.....	371
CAB, AIR CONDITIONER UNIT (3/3), WITH AUTO DECELERATOR .....	K0210-006036.....	372
CAB, AIR CONDITIONER CONTROL PANEL, WITH AUTO DECELERATOR.....	K0210-006037.....	373
CAB, AIR CONDITIONER UNIT (3/3), WITH AUTO DECELERATOR .....	K0210-006038.....	374
CAB, FLOOR, TRAVEL CONTROL LEVER, WITH AIR CONDITIONER .....	K0210-006039.....	375
CAB, KOMTRAX TERMINAL AND ANTENNA, WITH AIR CONDITIONER, WITH AUTO DECELERATOR.....	K0210-006040	376
CAB, ROOM LAMP, WITH AIR CONDITIONER, WITH AUTO DECELERATOR .....	K0210-006041.....	377
CAB, CAB MOUNTS, WITH AIR CONDITIONER, WITH AUTO DECELERATOR.....	K0210-006042.....	378
CAB, CAB IN PARTS, FLOOR COVER, WITH AIR CONDITIONER, WITH AUTO DECELERATOR.....	K0210-006043.....	379
CAB, CUP HOLDER, WITH AIR CONDITIONER, WITH AUTO DECELERATOR.....	K0210-006044.....	380
CAB, TRAVEL AND BLADE, WITH AIR CONDITIONER, WITH AUTO DECELERATOR.....	K0210-006045.....	381
CAB, CAB BODY AND WINDOW .....	K0210-039001.....	382
CAB, FRONT WINDOW .....	K0210-039002.....	383
CAB, FRONT LOWER WINDOW .....	K0210-039003.....	384
CAB, DOOR.....	K0210-039004.....	385
CAB, DOOR LOCK.....	K0210-039005.....	386

CAB, OPEN LOCK AND DOOR CATCH .....	K0210-039006.....	387
CAB, CAB IN PARTS, ELECTRIC PARTS .....	K0210-039007.....	388
CAB, CAB IN PARTS, REAR COVER.....	K0210-039008.....	389
CAB, KOMATSU MARK.....	K0210-039009.....	390
CAB, FLOOR, BASE.....	K0210-039010.....	391
CAB, FLOOR, TRAVEL CONTROL.....	K0210-039011.....	392
CAB, PPC VALVE FOR TRAVEL .....	K0210-039012.....	393
CAB, FLOOR, PPC PIPING FOR TRAVEL VALVE.....	K0210-039013.....	394
CAB, PPC VALVE FOR BOOM SWING .....	K0210-039014.....	395
CAB, BOOM SWING CONTROL .....	K0210-039015.....	396
CAB, FLOOR, P, T BLOCK AND SEAL.....	K0210-039016.....	397
CAB, FLOOR, CONSOLE, LHS .....	K0210-039017.....	398
CAB, PPC VALVE FOR WORK EQUIPMENT (1/2) .....	K0210-039018.....	399
CAB, PPC LINES, LHS.....	K0210-039019.....	400
CAB, FLOOR, CONSOLE, RHS.....	K0210-039020.....	401
CAB, PPC VALVE FOR WORK EQUIPMENT (2/2) .....	K0210-039021.....	402
CAB, PPC LINES, RHS .....	K0210-039022.....	403
CAB, FUEL CONTROL LEVER.....	K0210-039023.....	404
CAB, CAB IN PARTS, ELECTRIC WIRING .....	K0210-039024.....	405
CAB, PPC VALVE FOR BLADE .....	K0210-039025.....	406
CAB, BLADE CONTROL LEVER.....	K0210-039026.....	407
CAB, COVER.....	K0210-039027.....	408
CAB, FLOOR, UNDER SHEET .....	K0210-039028.....	409
CAB, ATTACHMENT PEDAL .....	K0210-039029.....	410
CAB, PPC VALVE FOR SWING AND ATTACHMENT AND BLADE LIFT .....	K0210-039030.....	411
CAB, ATTACHMENT PIPING .....	K0210-039031.....	412
CAB, WRIST REST .....	K0210-039032.....	413
CAB, CAP, CONSOLE BOX.....	K0210-039033.....	414
CAB, HEATER DUCT.....	K0210-039034.....	415
CAB, HEATER UNIT .....	K0210-039035.....	416
CAB, FLOOR, TRAVEL CONTROL LEVER.....	K0210-039036.....	417
CAB, KOMTRAX TERMINAL AND ANTENNA.....	K0210-039037.....	418
CAB, ROOM LAMP .....	K0210-039038.....	419
CAB, CAB MOUNTS.....	K0210-039039.....	420
CAB, CAB IN PARTS, FLOOR COVER.....	K0210-039040.....	421
CAB, CUP HOLDER .....	K0210-039041.....	422
CAB, TRAVEL AND BLADE.....	K0210-039042.....	423
CAB, CAB BODY AND WINDOW, WITH AIR CONDITIONER.....	K0210-040001.....	424
CAB, FRONT WINDOW, WITH AIR CONDITIONER.....	K0210-040002.....	425
CAB, FRONT LOWER WINDOW, WITH AIR CONDITIONER.....	K0210-040003.....	426
CAB, DOOR, WITH AIR CONDITIONER .....	K0210-040004.....	427
CAB, DOOR LOCK, WITH AIR CONDITIONER.....	K0210-040005.....	428
CAB, OPEN LOCK AND DOOR CATCH, WITH AIR CONDITIONER .....	K0210-040006.....	429
CAB, CAB IN PARTS, ELECTRIC PARTS, WITH AIR CONDITIONER.....	K0210-040007.....	430
CAB, CAB IN PARTS, REAR COVER, WITH AIR CONDITIONER.....	K0210-040008.....	431
CAB, KOMATSU MARK, WITH AIR CONDITIONER.....	K0210-040009.....	432

CAB, FLOOR, BASE, WITH AIR CONDITIONER .....	K0210-040010.....	433
CAB, FLOOR, TRAVEL CONTROL, WITH AIR CONDITIONER .....	K0210-040011.....	434
CAB, PPC VALVE FOR TRAVEL, WITH AIR CONDITIONER.....	K0210-040012.....	435
CAB, FLOOR, PPC PIPING FOR TRAVEL VALVE, WITH AIR CONDITIONER.....	K0210-040013.....	436
CAB, PPC VALVE FOR BOOM SWING, WITH AIR CONDITIONER.....	K0210-040014.....	437
CAB, BOOM SWING CONTROL, WITH AIR CONDITIONER .....	K0210-040015.....	438
CAB, FLOOR, P, T BLOCK AND SEAL, WITH AIR CONDITIONER.....	K0210-040016.....	439
CAB, FLOOR, CONSOLE, LHS, WITH AIR CONDITIONER.....	K0210-040017.....	440
CAB, PPC VALVE FOR WORK EQUIPMENT (1/2), WITH AIR CONDITIONER.....	K0210-040018.....	441
CAB, PPC LINES, LHS, WITH AIR CONDITIONER .....	K0210-040019.....	442
CAB, FLOOR, CONSOLE, RHS, WITH AIR CONDITIONER .....	K0210-040020.....	443
CAB, PPC VALVE FOR WORK EQUIPMENT (2/2), WITH AIR CONDITIONER.....	K0210-040021.....	444
CAB, PPC LINES, RHS, WITH AIR CONDITIONER.....	K0210-040022.....	445
CAB, FUEL CONTROL LEVER, WITH AIR CONDITIONER .....	K0210-040023.....	446
CAB, CAB IN PARTS, ELECTRIC PARTS, WITH AIR CONDITIONER.....	K0210-040024.....	447
CAB, PPC VALVE FOR BLADE, WITH AIR CONDITIONER .....	K0210-040025.....	448
CAB, BLADE CONTROL LEVER, WITH AIR CONDITIONER .....	K0210-040026.....	449
CAB, COVER, WITH AIR CONDITIONER.....	K0210-040027.....	450
CAB, FLOOR, UNDER SHEET, WITH AIR CONDITIONER.....	K0210-040028.....	451
CAB, ATTACHMENT PEDAL, WITH AIR CONDITIONER.....	K0210-040029.....	452
CAB, PPC VALVE FOR SWING AND ATTACHMENT AND BLADE LIFT, WITH AIR CONDITIONER.....	K0210-040030.....	453
CAB, ATTACHMENT PIPING, WITH AIR CONDITIONER.....	K0210-040031.....	454
CAB, WRIST REST, WITH AIR CONDITIONER.....	K0210-040032.....	455
CAB, CAP, CONSOLE BOX, WITH AIR CONDITIONER.....	K0210-040033.....	456
CAB, AIR CONDITIONER UNIT (1/3).....	K0210-040034.....	457
CAB, AIR CONDITIONER INNER PARTS (1/3) .....	K0210-040035.....	458
CAB, AIR CONDITIONER INNER PARTS (2/3) .....	K0210-040036.....	459
CAB, AIR CONDITIONER INNER PARTS (3/3) .....	K0210-040037.....	460
CAB, AIR CONDITIONER UNIT (2/3).....	K0210-040038.....	461
CAB, AIR CONDITIONER CONTROL PANEL .....	K0210-040039.....	462
CAB, AIR CONDITIONER UNIT (3/3).....	K0210-040040.....	463
CAB, FLOOR, TRAVEL CONTROL LEVER, WITH AIR CONDITIONER .....	K0210-040041.....	464
CAB, KOMTRAX TERMINAL AND ANTENNA, WITH AIR CONDITIONER.....	K0210-040042.....	465
CAB, ROOM LAMP, WITH AIR CONDITIONER.....	K0210-040043.....	466
CAB, CAB MOUNTS, WITH AIR CONDITIONER .....	K0210-040044.....	467
CAB, CAB IN PARTS, FLOOR COVER, WITH AIR CONDITIONER .....	K0210-040045.....	468
CAB, CUP HOLDER, WITH AIR CONDITIONER.....	K0210-040046.....	469
REAR VIEW MIRROR, WITH AIR CONDITIONER .....	K0210-040047.....	470
CAB, TRAVEL AND BLADE, WITH AIR CONDITIONER .....	K0210-040048.....	471
FLOOR MAT, FOR CAB, AIR CONDITIONER, 1-ATTACHMENT.....	K0310-002001.....	472
WASHER AND WIPER .....	K0350-001001.....	473
HEATER, UNIT .....	K0700-001001.....	474
AIR CONDITIONER UNIT, (1/3) .....	K0700-005001.....	475
AIR CONDITIONER UNIT, (2/3) .....	K0700-005002.....	476
ASHTRAY .....	K0821-001001.....	477

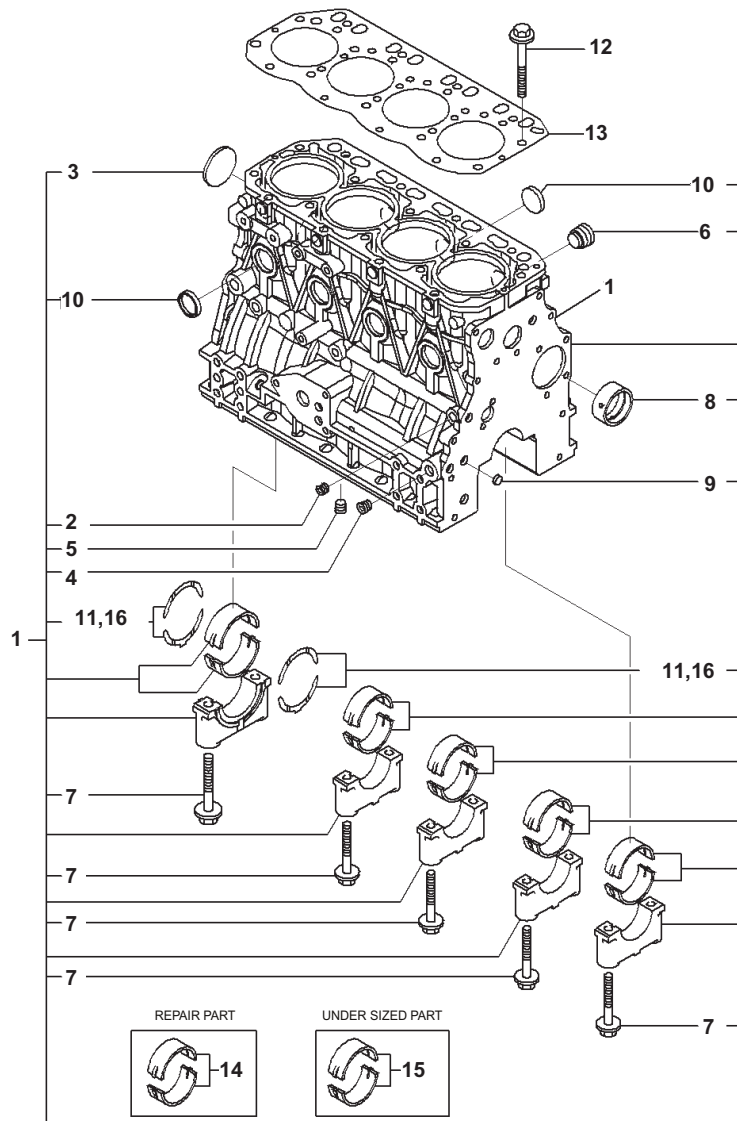
POWER SOURCE.....	K0822-001001.....	478
FLOOR MOUNTS, FOR CAB, GAS SPRINGS RELATED PARTS.....	K1120-004001.....	479
FLOOR MOUNTS, FOR CAB, BRACKET .....	K1120-004002.....	480
FLOOR MOUNTS, FOR CAB, CABLE CLAMP.....	K1120-004003.....	481
GUARDS AND COVERS .....		483
HOOD, REAR HOOD.....	M1110-006001.....	484
HOOD, FOR CAB, BRACKET .....	M1110-006002.....	485
HOOD, COVER.....	M1110-006003.....	486
HOOD, FOR CAB, HYDRAULIC TANK COVER .....	M1110-006004.....	487
SIDE COVER, LHS.....	M1130-002001.....	488
SIDE COVER, RHS, (1/2).....	M1140-005001.....	489
SIDE COVER, RHS, (2/2).....	M1140-005002.....	490
FRONT COVER, FOR CAB .....	M1230-002001.....	491
REAR VIEW MIRROR.....	M1420-001001.....	492
REAR VIEW MIRROR, FOR PROPORTIONAL CONTROL LEVER .....	M1420-002001.....	493
REAR VIEW MIRROR, WITH AIR CONDITIONER, FOR PROPORTIONAL CONTROL LEVER .....	M1420-003001.....	494
REAR VIEW MIRROR, WITH AUTO DECELERATOR .....	M1420-004001.....	495
REAR VIEW MIRROR, WITH AIR CONDITIONER, WITH AUTO DECELERATOR .....	M1420-005001.....	496
COUNTERWEIGHT .....	M1510-002001.....	497
UNDER COVER .....	M1810-001001.....	498
SWING CIRCLE AND ITS RELATED PARTS.....		499
SWING MACHINERY, (1/3) .....	N1200-001001.....	500
SWING MACHINERY, INNER PARTS (1/3).....	N1200-001002.....	501
SWING MACHINERY, INNER PARTS (2/3).....	N1200-001003.....	502
SWING MACHINERY, INNER PARTS (3/3).....	N1200-001004.....	503
SWING MACHINERY, (2/3) .....	N1200-001005.....	504
SWING MACHINERY, (3/3) .....	N1200-001006.....	505
UNDERCARRIAGE .....		507
TRACK SHOE ASSEMBLY, STEEL, IDLER CUSHION .....	R0500-004001.....	508
TRACK SHOE ASSEMBLY, STEEL, (1/2).....	R0500-004002.....	509
TRACK SHOE ASSEMBLY, STEEL, (2/2).....	R0500-004003.....	510
TRACK SHOE ASSEMBLY, RUBBER, IDLER CUSHION.....	R0500-005001.....	511
TRACK SHOE ASSEMBLY, RUBBER .....	R0500-005002.....	512
TRACK SHOE ASSEMBLY, ROAD LINER, (1/3) .....	R0500-006001.....	513
TRACK SHOE ASSEMBLY, ROAD LINER, (2/3) .....	R0500-006002.....	514
TRACK SHOE ASSEMBLY, ROAD LINER, (3/3) .....	R0500-006003.....	515
TRACK FRAME, SWING CIRCLE.....	R1100-008001.....	516
TRACK FRAME, SWIVEL JOINT.....	R1100-008002.....	517
TRACK FRAME, CONNECTING PARTS, SWIVEL JOINT.....	R1100-008003.....	518
TRACK FRAME, DRAIN LINES, SWIVEL JOINT .....	R1100-008004.....	519
TRACK FRAME, TRAVEL MOTOR LINES, LOWER.....	R1100-008005.....	520
TRACK FRAME, TRAVEL MOTOR, INNER PARTS (1/3).....	R1100-008006.....	521

TRACK FRAME, TRAVEL MOTOR, INNER PARTS (2/3) .....	R1100-008007	522	BLADE CYLINDER, (2/2) .....	T1720-003002	567
TRACK FRAME, TRAVEL MOTOR, INNER PARTS (3/3) .....	R1100-008008	523	MARKS AND PLATES .....		569
TRACK FRAME, SPROCKET .....	R1100-008009	524	MARKS AND PLATES .....	U0100-001001	570
TRACK FRAME, CONNECTING PARTS, TRAVEL PIPING .....	R1100-008010	525	MARKS AND PLATES, FOR AIR CONDITIONER .....	U0100-002001	572
TRACK FRAME, FRONT IDLER .....	R1100-008011	526	MARKS AND PLATES, WITH PROPORTIONAL CONTROL LEVER .....	U0100-003001	574
TRACK FRAME, TRACK ROLLER .....	R1100-008012	527	MARKS AND PLATES, FOR AIR CONDITIONER, WITH PROPORTIONAL CONTROL LEVER .....	U0100-004001	576
TRACK FRAME, CARRIER ROLLER .....	R1100-008013	528	LIFTING CAPACITY CHART, FOR EU .....	U0200-002001	578
TRACK FRAME, FRAME .....	R1100-008014	529	LIFTING CAPACITY CHART, FOR EU, LONG ARM .....	U0200-003001	579
TRACK FRAME, TRACK FRAME COVER .....	R1100-008015	530	LEVER SHIFT PATTERN, FOR CAB .....	U0300-003001	580
TRACK FRAME, SWING CIRCLE MOUNTS .....	R1100-008016	531	LEVER SHIFT PATTERN, FOR CAB, FOR PROPORTIONAL CONTROL LEVER .....	U0300-004001	581
TRACK FRAME, SWIVEL JOINT MOUNTS .....	R1100-008017	532	GENERAL TOOL SET .....	U0400-001001	582
TRACK FRAME, UNDER COVER .....	R1100-008018	533			
WORK EQUIPMENT .....		535	ALPHANUMERIC INDEX		
BOOM, WITH ATTACHMENT LINE, BOOM .....	T1110-013001	536			
BOOM, WITH ATTACHMENT LINE, ARM AND BUCKET CYLINDER LINES .....	T1110-013002	537			
BOOM, WITH ATTACHMENT LINE, WORKING LAMP .....	T1110-013003	538			
BOOM, WITH ATTACHMENT LINE, PIN, ARM CYLINDER .....	T1110-013004	539			
BOOM, WITH ATTACHMENT LINE, ATTACHMENT LINE .....	T1110-013005	540			
BOOM, WITH ATTACHMENT LINE, ARM CYLINDER, INNER PARTS .....	T1110-013006	541			
BOOM, WITH ATTACHMENT LINE, BOOM CYLINDER PIPING .....	T1110-013007	542			
BOOM, WITH ATTACHMENT LINE, PIN, BOOM CYLINDER AND ARM .....	T1110-013008	543			
BOOM CYLINDER, (1/2) .....	T1120-001001	544			
BOOM CYLINDER, (2/2) .....	T1120-001002	545			
ARM, LENGHT 1640 MM, WITH ATTACHMENT LINE, ARM .....	T1200-023001	546			
ARM, LENGHT 1640 MM, WITH ATTACHMENT LINE, ATTACHMENT LINE (1/2) .....	T1200-023002	547			
ARM, LENGHT 1640 MM, WITH ATTACHMENT LINE, ATTACHMENT LINE (2/2) .....	T1200-023003	548			
ARM, LENGHT 1640 MM, WITH ATTACHMENT LINE, BUCKET CYLINDER LINE .....	T1200-023004	549			
ARM, LENGHT 1640 MM, WITH ATTACHMENT LINE, BUCKET CYLINDER, INNER PARTS .....	T1200-023005	550			
ARM, LENGHT 1640 MM, WITH ATTACHMENT LINE, BUCKET LINK .....	T1200-023006	551			
ARM, LENGHT 2000 MM, WITH ATTACHMENT LINE, ARM .....	T1200-024001	552			
ARM, LENGHT 2000 MM, WITH ATTACHMENT LINE, ATTACHMENT LINE (1/2) .....	T1200-024002	553			
ARM, LENGHT 2000 MM, WITH ATTACHMENT LINE, ATTACHMENT LINE (2/2) .....	T1200-024003	554			
ARM, LENGHT 2000 MM, WITH ATTACHMENT LINE, BUCKET CYLINDER LINE .....	T1200-024004	555			
ARM, LENGHT 2000 MM, WITH ATTACHMENT LINE, BUCKET CYLINDER, INNER PARTS .....	T1200-024005	556			
ARM, LENGHT 2000 MM, WITH ATTACHMENT LINE, BUCKET LINK .....	T1200-024006	557			
BUCKET PIN .....	T1235-001001	558			
BUCKET (L=300 mm) .....	T1510-001001	559			
BUCKET (L=400 mm) .....	T1510-002001	560			
BUCKET (L=500 mm) .....	T1510-003001	561			
BUCKET (L=600 mm) .....	T1510-004001	562			
BUCKET (L=700 mm) .....	T1510-005001	563			
BUCKET (L=800 mm) .....	T1510-006001	564			
BLADE .....	T1710-003001	565			
BLADE CYLINDER, (1/2) .....	T1720-003001	566			



# ENGINE UNIT

FIG. A0100-001001 ENGINE, GAUGE CYLINDER

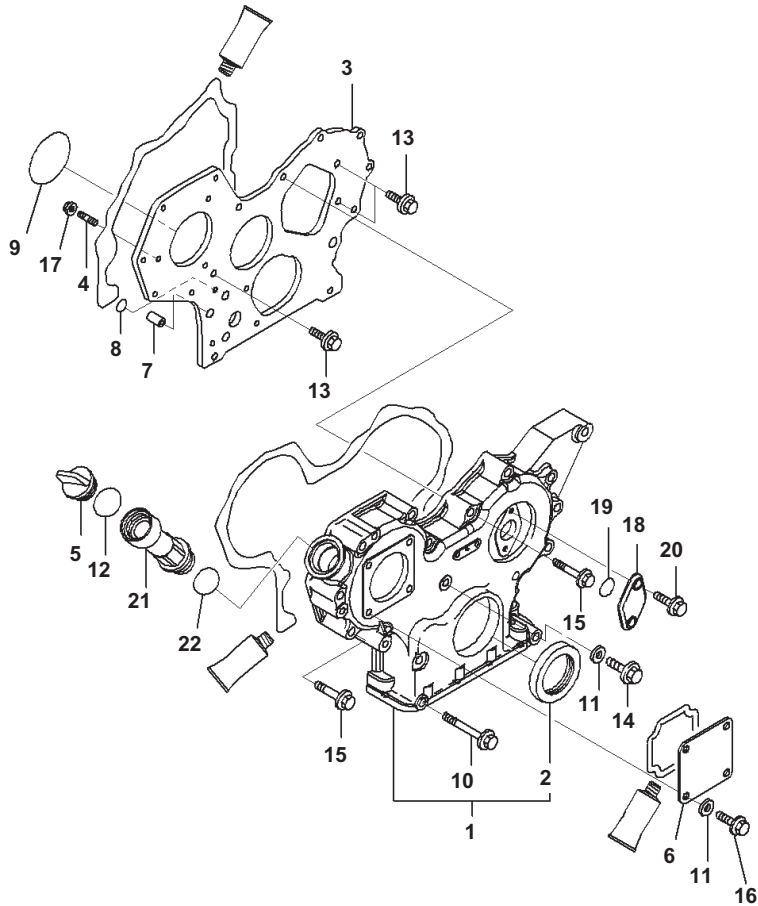


POS. COD.	DESCRIPTION	Q.ty	SERIAL NUMBER
1	YM729602-01560 CYLINDER BLOCK, ASSEMBLY	1	14803-
2	YM124060-01050 . PLUG, TAPERED	1	14803-
3	YM129001-01250 . PLUG	1	14803-
4	YM124160-01910 . PLUG, TAPERED	2	14803-
5	YM124160-01910 . PLUG, TAPERED	1	14803-
6	YM171051-01921 . PLUG, TAPERED	1	14803-
7	YM129150-02020 . BOLT	10	14803-
8	YM129795-02412 . BUSHING	1	14803-
9	YM27241-120000 . PLUG	2	14803-
10	YM27241-300000 . PLUG, TAPERED	8	14803-
11	YM129150-02931 . THRUST METAL, ASSEMBLY	2	14803-
12	YM129150-01200 BOLT	18	14803-
13	YM129407-01340 GASKET	1	14803-
14	YM129001-02931 MAIN METAL, ASSEMBLY	5	14803-
15	YM129150-02871 MAIN METAL ASSEMBLY, UNDERSIZED	5	14803-
16	YM129150-02941 THRUST METAL ASSEMBLY, OVERSIZED	1	14803-

JY009369



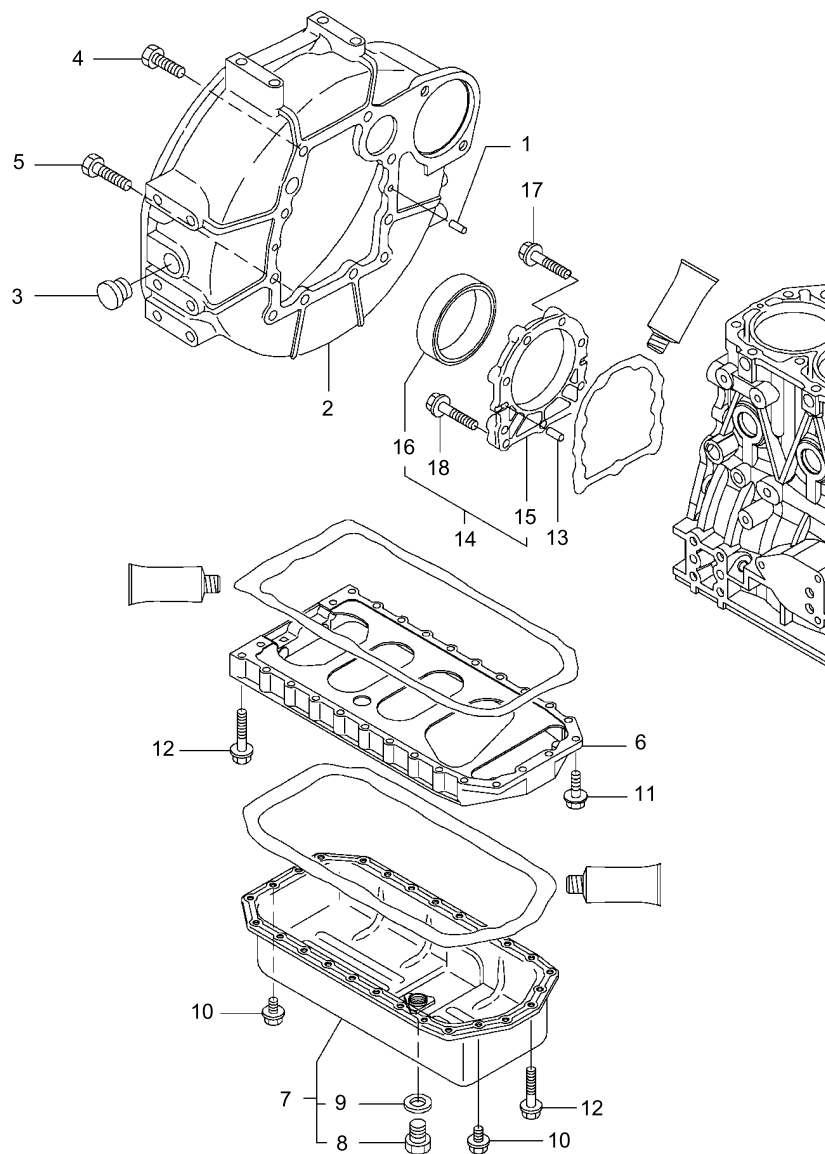
FIG. A0100-001002 ENGINE, GEAR CASE



POS. COD.	DESCRIPTION	Q.ty	SERIAL NUMBER
1	YM729630-01500	1	14803-
2	YM119934-01800	1	14803-
3	YM119803-01520	1	14803-
4	YM119802-01561	3	14803-
5	YM124160-01751	1	14803-
6	YM124240-01871	1	14803-
7	YM129795-01950	2	14803-
8	YM119609-32040	2	14803-
9	YM121850-51960	1	14803-
10	YM26106-080852	3	14803-
11	YM22190-080002	5	14803-
12	YM24311-000320	1	14803-
13	YM26106-080162	3	14803-
14	YM26106-080302	1	14803-
15	YM26106-080552	12	14803-
16	YM26106-080162	4	14803-
17	YM26306-080002	3	14803-
18	YM121023-01551	1	14803-
19	YM24341-000240	1	14803-
20	YM26106-060162	2	14803-
21	YM121027-11743	1	14803-
22	YM24311-000320	1	14803-

JY009370

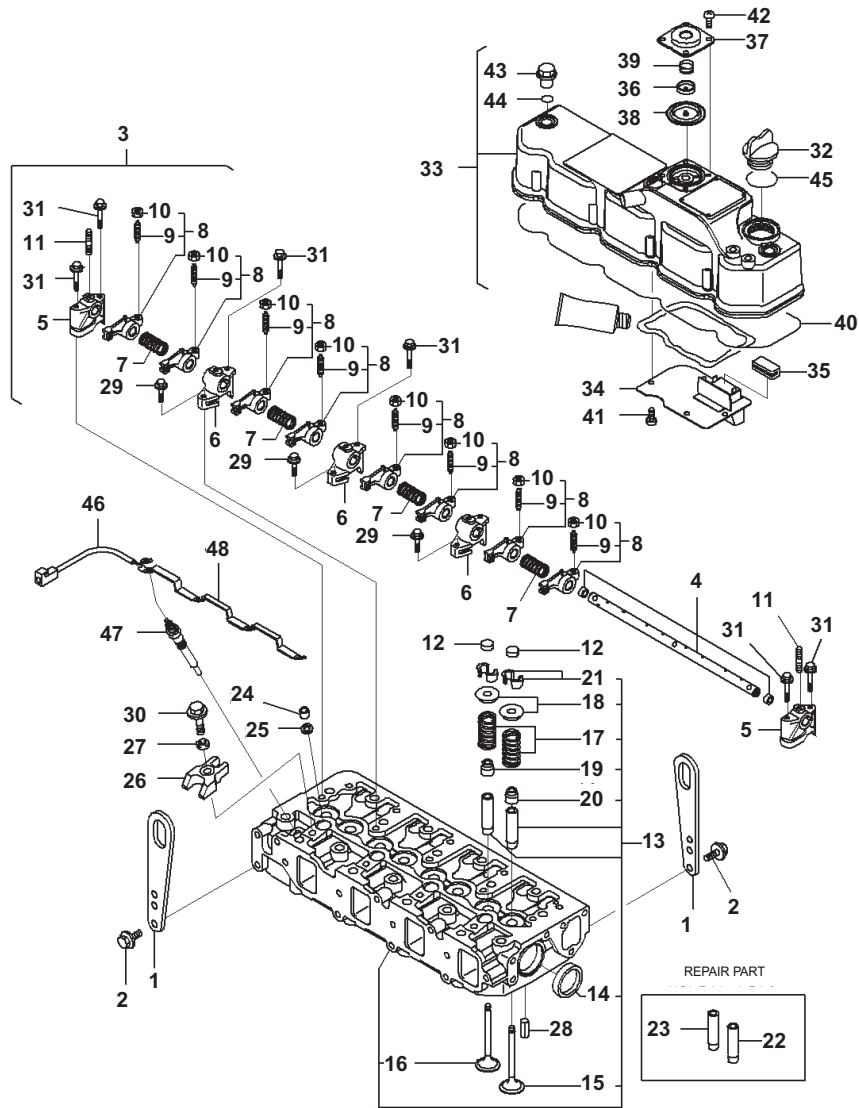
FIG. A0100-001003 ENGINE, FLYWHEEL HOUSING AND OIL PAN



POS. COD.	DESCRIPTION	Q.ty	SERIAL NUMBER
1	YM129100-01580 PIN, DOWEL	2	14803-
2	YM129612-01600 HOUSING	1	14803-
3	YM119620-01750 CAP	1	14803-
4	YM26206-100252 BOLT	6	14803-
5	YM26206-100302 BOLT	4	14803-
6	YM129400-01730 SPACER	1	14803-
7	YM129630-01781 OIL PAN, ASSEMBLY	1	14803-
8	YM119640-01640 . PLUG	1	14803-
9	YM22190-220002 . SEAL, WASHER	1	14803-
10	YM26106-080162 BOLT, FLANGED	4	14803-
11	YM26106-080252 BOLT, FLANGED	2	14803-
12	YM26106-080452 BOLT, FLANGED	24	14803-
13	YM129100-01580 PIN, DOWEL	2	14803-
14	YM129100-01640 CASE, ASSEMBLY	1	14803-
15	YM129150-01650 . CASE, OIL SEAL	1	14803-
16	YM129795-01780 . SEAL, OIL	1	14803-
17	YM129486-01670 SCREW	6	14803-
18	YM26106-080352 BOLT, FLANGED	3	14803-

RKB86350

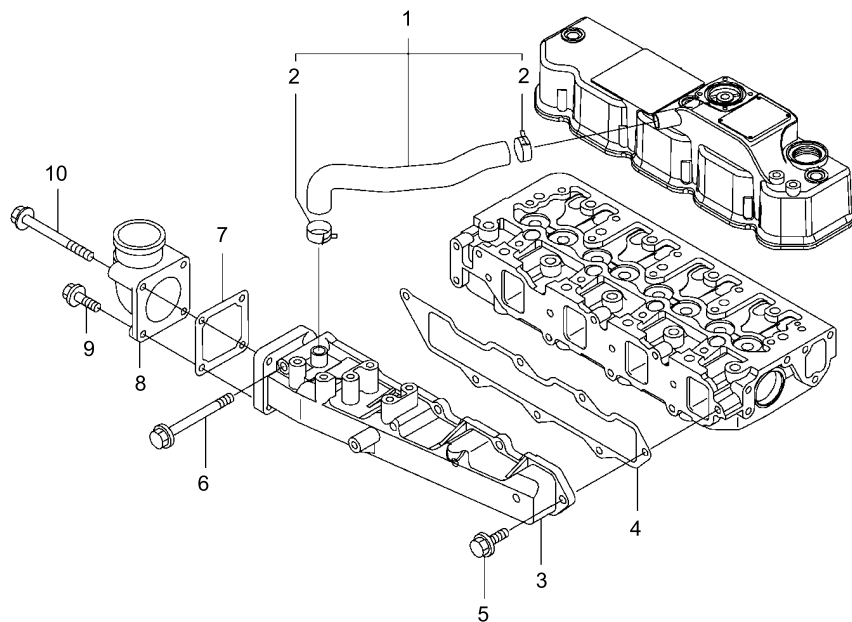
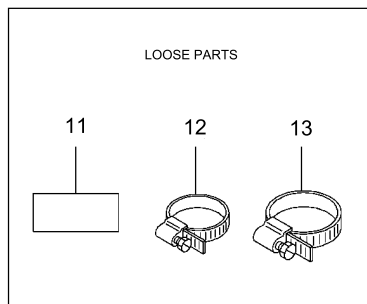
FIG. A0100-001004 ENGINE, CYLINDER HEAD



JY009372

POS. COD.	DESCRIPTION	Q.ty	SERIAL NUMBER
1	YM129900-07900	LIFTER	2   14803-
2	YM26106-080162	BOLT, FLANGED	4   14803-
3	YM129601-11241	SHAFT, ASSEMBLY	1   14803-
4	YM129601-11251	. SHAFT, ASSEMBLY	1   14803-
5	YM119802-11260	. SUPPORT	2   14803-
6	YM119802-11270	. SUPPORT	3   14803-
7	YM129150-11280	. SPRING	4   14803-
8	YM129004-11650	. ROCKER ARM, ASSEMBLY	8   14803-
9	YM129150-11230	. . SCREW, VALVE	1   14803-
10	YM129150-11750	. . NUT	1   14803-
11	YM26226-080182	. STUD	3   14803-
12	YM129150-11370	CAP, VALVE	8   14803-
13	YM129604-11700	CYLINDER HEAD, ASSEMBLY	1   14803-
14	YM27241-400000	. PLUG	2   14803-
15	YM129005-11100	. VALVE, INTAKE	4   14803-
16	YM129100-11112	. VALVE, EXHAUST	4   14803-
17	YM129795-11120	. SPRING	8   14803-
18	YM129795-11180	. RETAINER	8   14803-
19	YM121400-11340	. SEAL	4   14803-
20	YM124460-11340	. SEAL	4   14803-
21	YM27310-080001	. COTTER	8   14803-
22	YM120130-11860	GUIDE	4   14803-
23	YM129150-11810	GUIDE	4   14803-
24	YM119802-11870	PROTECTOR, NOZZLE	4   14803-
25	YM119625-11880	SEAT, NOZZLE	4   14803-
26	YM129004-11900	RETAINER	4   14803-
27	YM120270-54410	WASHER	4   14803-
28	YM22351-060012	PIN, SPRING	2   14803-
29	YM26106-080252	BOLT, FLANGED	3   14803-
30	YM26106-080352	BOLT, FLANGED	4   14803-
31	YM26106-080502	BOLT, FLANGED	7   14803-
32	YM124160-01751	COVER, FILLER	1   14803-
33	YM129601-11350	HEAD COVER, ASSEMBLY	1   14803-
34	YM129004-03010	. PLATE	1   14803-
35	YM129150-03070	. BAFFLE	1   14803-
36	YM119802-03110	. RETAINER	1   14803-
37	YM119802-03121	. COVER	1   14803-
38	YM119802-03130	. DIAPHRAGM	1   14803-
39	YM119802-03141	. SPRING	1   14803-
40	YM129601-11310	. PACKING	1   14803-
41	YM22857-500100	. SCREW	4   14803-
42	YM22857-500100	. SCREW	4   14803-
43	YM124160-11360	KNOB	3   14803-
44	YM24311-000120	O-RING	3   14803-
45	YM24311-000320	O-RING	1   14803-
46	YM129630-77800	WIRE HARNESS	1   14803-
47	YM129008-77800	GLOW PLUG	4   14803-
48	YM129604-77821	CONNECTOR	1   14803-

FIG. A0100-001005 ENGINE, AIR INTAKE MANIFOLD AND AIR CLEANER



POS. COD.	DESCRIPTION	Q.ty	SERIAL NUMBER
1	YM129601-03080 PIPE	1	14803-
2	YM129410-03990 . CLAMP	2	14803-
3	YM129601-12100 MANIFOLD	1	14803-
4	YM129407-12110 GASKET	1	14803-
5	YM26106-080202 BOLT, FLANGED	6	14803-
6	YM26106-080802 BOLT, FLANGED	1	14803-
7	YM129150-77511 GASKET	1	14803-
8	YM119803-77520 BEND	1	14803-
9	YM26106-080202 BOLT, FLANGED	2	14803-
10	YM26106-080802 BOLT, FLANGED	2	14803-
11	YM129407-12610 LABEL	1	14803-
12	YM23000-060000 CLAMP	1	14803-
13	YM23000-090000 CLAMP	1	14803-

RKB86280