

Operation & Maintenance Manual

PC450-8

PC450LC-8

HYDRAULIC EXCAVATOR

SERIAL NUMBER

PC450-8 - K50001 and up

PC450LC-8 - K50001 and up

PC450LCD-8 - K50001 and up

PC450LCHD-8 - K50001 and up



WARNING

Unsafe use of this machine may cause serious injury or death. Operators and maintenance personnel must read this manual before operating or maintaining this machine. This manual should be kept inside the cab for reference and periodically reviewed by all personnel who will come into contact with the machine.

KOMATSU

FOREWORD

FOREWORD

This manual provides rules and guidelines which will help you use this machine safely and effectively. The precautions in this manual must be followed at all times when performing operation and maintenance. Most accidents are caused by the failure to follow fundamental safety rules for the operation and maintenance of machines. Accidents can be prevented by knowing beforehand conditions that may cause a hazard when performing operation and maintenance.

WARNING

Before beginning operation or maintenance, operators and maintenance personnel must always observe the following points.

Read this manual thoroughly and understand its contents fully.

Read the safety messages and safety labels given in this manual carefully so that they should be understood fully.

Keep this manual at the storage location for the Operation and Maintenance Manual given below so that all personnel involved in working on the machine can consult it periodically.

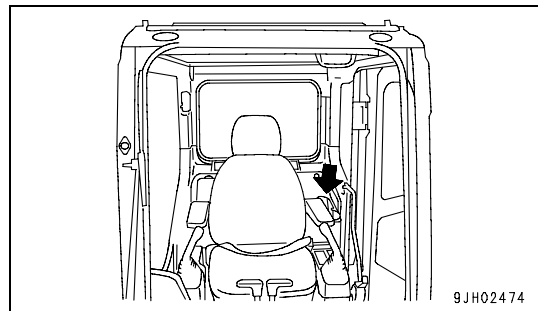
In case this manual should be lost or damaged, immediately contact Komatsu or your Komatsu distributor to obtain a new copy.

When you sell the machine, make sure that this manual should be provided to the new owner together with the machine.

In this manual, measurements are expressed in international standard units (SI). For the reference purpose, weight units used in the past are also displayed in ().

Storage location for the Operation and Maintenance Manual:

magazine box on the left side of the operator's seat.



SAFETY INFORMATION

To enable you to use this machine safely, safety precautions and labels are given in this manual and affixed to the machine to give explanations of situations involving potential hazards and of the methods of avoiding such situations.

Signal words

The following signal words are used to inform you that there is a potential hazardous situation that may lead to personal injury or damage.

In this manual and on machine labels, the following signal words are used to express the potential level of hazard.



Indicates an imminently hazardous situation which, if not avoided, will result in death or serious injury.



Indicates a potentially hazardous situation which, if not avoided, could result in death or serious injury.



Indicates a potentially hazardous situation which, if not avoided, may result in minor or moderate injury. This word is used also to alert against unsafe practices that may cause property damage.

Example of safety message using signal word



When standing up from the operator's seat, always place the lock lever in the LOCK position. If you accidentally touch the control levers when they are not locked, this may cause a serious injury or death.

Other signal words

In addition to the above, the following signal words are used to indicate precautions that should be followed to protect the machine or to give information that is useful to know.

NOTICE

This word is used for precautions that must be taken to avoid actions which could shorten the life of the machine.

REMARKS

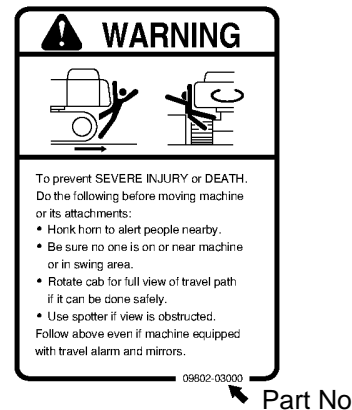
This word is used for information that is useful to know.

● Safety labels

Safety labels are affixed to the machine to inform the operator or maintenance worker on the spot when carrying out operation or maintenance of the machine that may involve hazard.

This machine uses “Safety labels using words” and “Safety labels using pictograms” to indicate safety procedures.

Example of safety label using words



Safety labels using pictogram

Safety pictograms use a picture to express a level of hazardous condition equivalent to the signal word. These safety pictograms use pictures in order to let the operator or maintenance worker understand the level and type of hazardous condition at all times.

Safety pictograms show the type of hazardous condition at the top or left side, and the method of avoiding the hazardous condition at the bottom or right side. In addition, the type of hazardous condition is displayed inside a triangle and the method of avoiding the hazardous condition is shown inside a circle.



Komatsu cannot predict every circumstance that might involve a potential hazard in operation and maintenance. Therefore, the safety messages in this manual and on the machine may not include all possible safety precautions.

If any procedures or actions not specifically recommended or allowed in this manual are used, it is your responsibility to take the necessary steps to ensure safety.

In no event should you engage in prohibited uses or actions described in this manual.

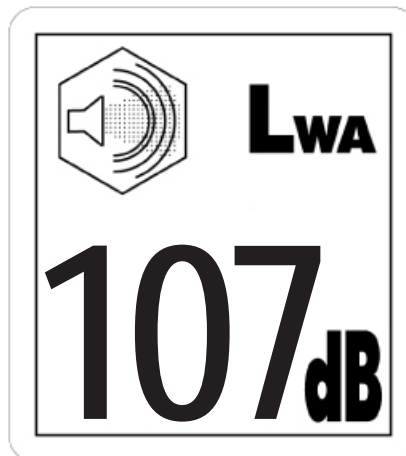
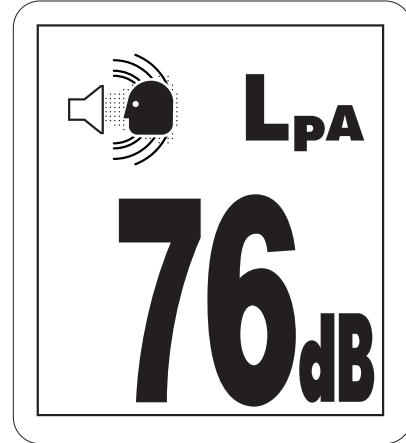
The explanations, values, and illustrations in this manual were prepared based on the latest information available at that time. Continuing improvements in the design of this machine can lead to changes in detail which may not be reflected in this manual. Consult Komatsu or your Komatsu distributor for the latest available information of your machine or for questions regarding information in this manual.

The numbers in circles in the illustrations correspond to the numbers in () in the text. (For example: ① → (1))

Noise emission levels

Two labels indicating the machine noise level are affixed on the machine.

- Sound pressure level at the operator's station, measured according to ISO6396 (Dynamic test method, simulated working cycle).
- Sound power level emitted by the machine, measured according to ISO 6395 (Dynamic test method, simulated working cycle). This is the guaranteed value as specified in European directive 2000/14/EC.



Vibration levels

When used for its intended purpose, levels of vibration for the earth-moving machine transmitted from the operator's seat are lower than or equal to the tested vibrations for the relative machinery class in compliance with ISO 7096.

The actual acceleration value for the hands and arms is less than or equal to 2.5 m/s². The actual acceleration value for the body is less than or equal to 0.5 m/s².

These values were determined using a representative machine and measured during the typical operating condition indicated below according to the measurement procedures that are defined in the standards ISO 2631/1 and ISO 5349.

Operating condition:

Excavating (Digging-loading-rotating-unloading-rotating)

Guide to Reduce Vibration Levels on Machine

The following guides can help an operator of this machine to reduce the whole body vibration levels:

1. Use the correct equipment and attachments.
2. Maintain the machine according to this manual
 - Tension of crawler (for crawler machines)
 - Brake and steering systems
 - Controls, hydraulic system and linkages
3. Keep the terrain where the machine is working and traveling in good condition
 - Remove any large rocks or obstacles
 - Fill any ditches and holes
 - Site manager should provide machine operators with machine and schedule time to maintain terrain conditions
4. Use a seat that meets ISO 7096 and keep the seat maintained and adjusted
 - Adjust the seat and suspension for the weight and size of the operator
 - Wear seat belt
 - Inspect and maintain the seat suspension and adjustment mechanisms
5. Steer, brake, accelerate, and move the attachment levers and pedals slowly so that the machine moves smoothly
6. Adjust the machine speed and travel path to minimize the vibration level
 - When pushing with bucket or blade, avoid sudden loading; load gradually
 - Drive around obstacles and rough terrain conditions
 - Slow down when it is necessary to go over rough terrain
 - Make the curve radius of traveling path as large as possible
 - Travel at low speed when traveling around sharp curves

7. Minimize vibrations for long work cycle or long distance traveling
 - Reduce speed to prevent bounce
 - Transport machines long distances between work sites
8. The following guidelines can be effective to minimize risks of low back pain
 - Operate the machine only when you are in good health.
 - Provide breaks to reduce long periods of sitting in the same posture
 - Do not jump down from the cab or machine
 - Do not repeatedly handle and lift loads

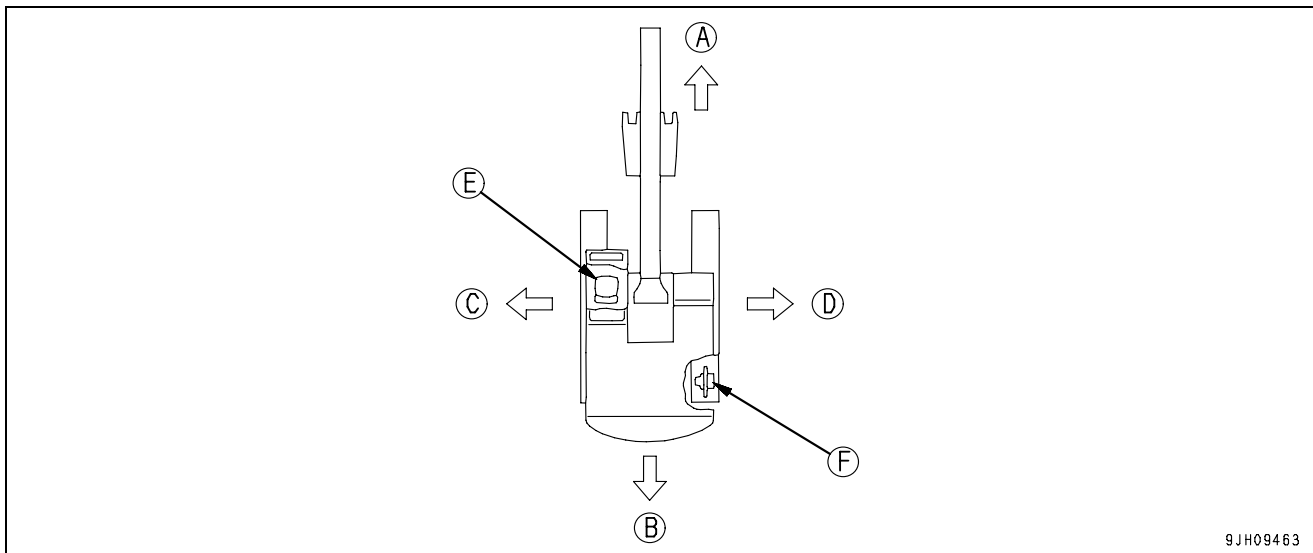
INTRODUCTION

This Komatsu machine is designed to be used mainly for the following work:

- Digging work
- Leveling work
- Ditching work
- Loading work
- Demolition work

See the section "RECOMMENDED APPLICATIONS (3-162)" for further details.

DIRECTIONS OF MACHINE



- | | |
|-----------|---------------------|
| (A) Front | (E) Operator's seat |
| (B) Rear | (F) Sprocket |
| (C) Left | |
| (D) Right | |

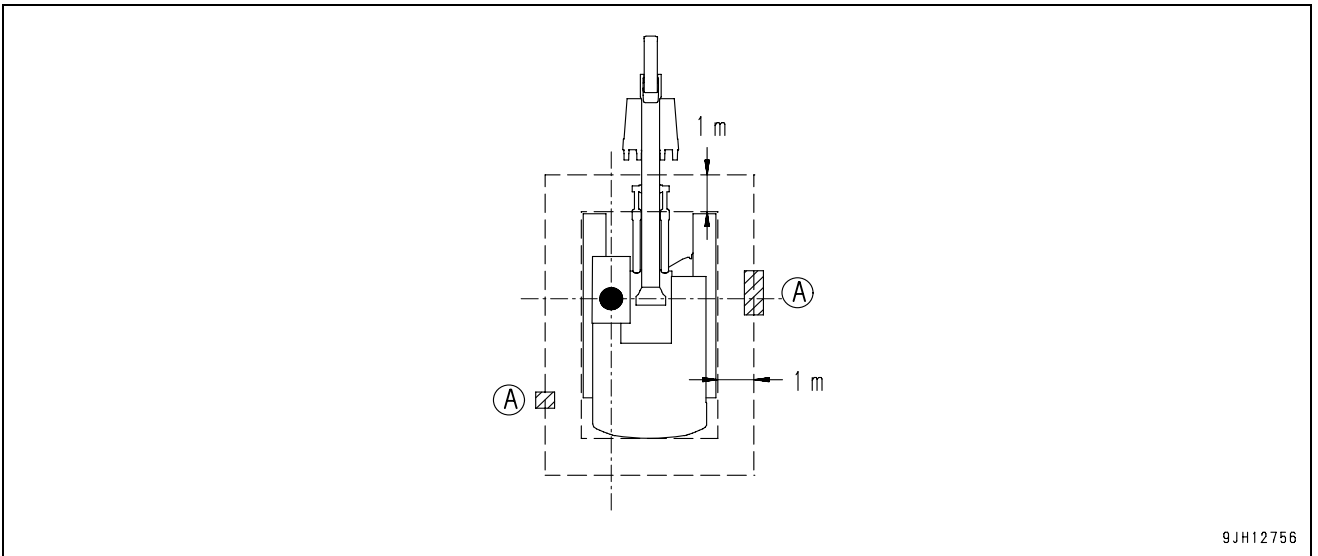
In this manual, the terms front, rear, left, and right refer to the travel direction as seen from the operator's seat when the operator's seat is facing the front and the sprocket is at the rear of the machine.

VISIBILITY FROM OPERATOR'S SEAT

The visibility standards (ISO 5006) for this machine require a view shown in the diagram below.

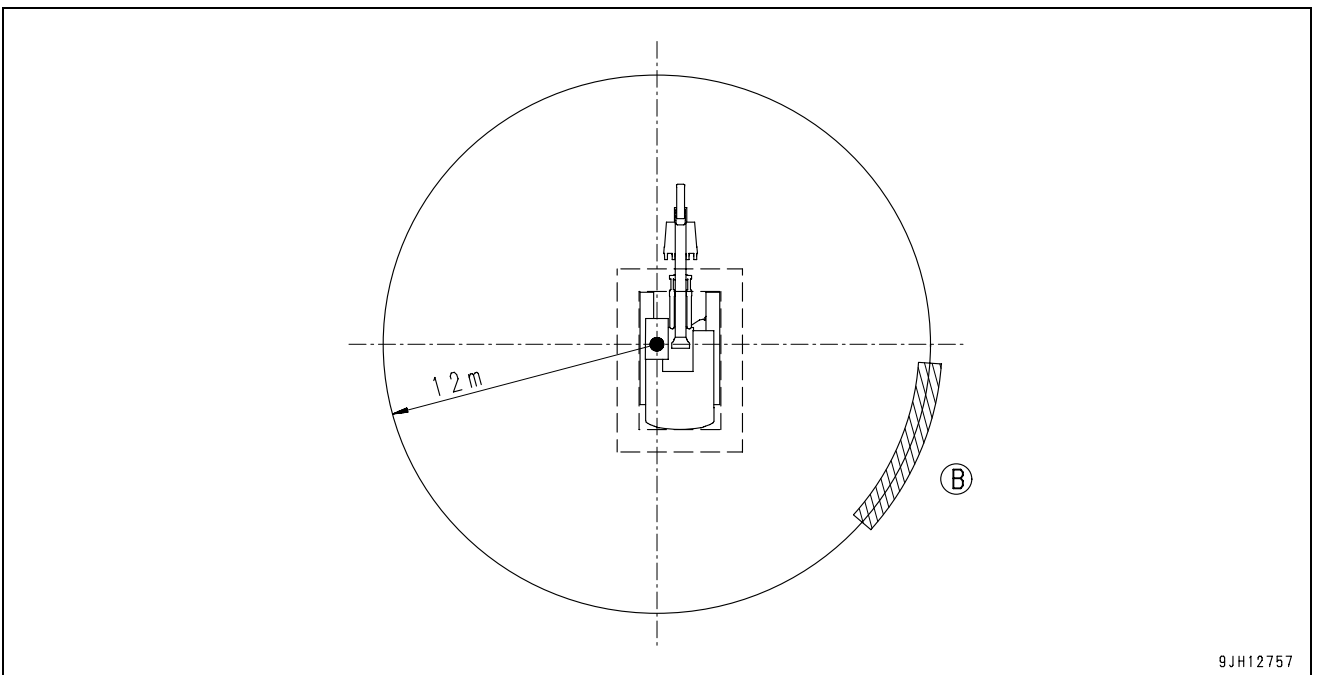
PROXIMITY VISIBILITY

The visibility of this machine in the area 1 m from the outside surface of the machine at a height of 1.5 m is shown in the diagram below. The hatched area (A) shows the area where the view is blocked by part of the machine when mirrors or other aids to visibility are installed as standard. Please be fully aware that there are places that cannot be seen when operating the machine.



12M CIRCUMFERENCE VISIBILITY

The visibility at a radius of 12 m from the machine is as shown in the diagram below. The hatched areas (B) show the areas where the view is blocked when mirrors or other aids to visibility are installed as standard. Please be fully aware that there are places that cannot be seen when operating the machine.



BREAKING-IN THE NEW MACHINE

NOTICE

Your Komatsu machine has been thoroughly adjusted and tested before shipment from the factory. However, operating the machine under full load before breaking the machine in can adversely affect the performance and shorten the machine life.

Be sure to break in the machine for the initial 100 hours (as indicated on the service meter).

Make sure that you fully understand the content of this manual, and pay careful attention to the following points when breaking in the machine.

- Run the engine at idle for 15 seconds after starting it. During this time, do not operate the control levers or fuel control dial.
- Idle the engine for 5 minutes after starting it up.
- Avoid operation with heavy loads or at high speeds.
- Immediately after starting the engine, avoid sudden starts, sudden acceleration, unnecessary sudden stops, and sudden changes in direction.

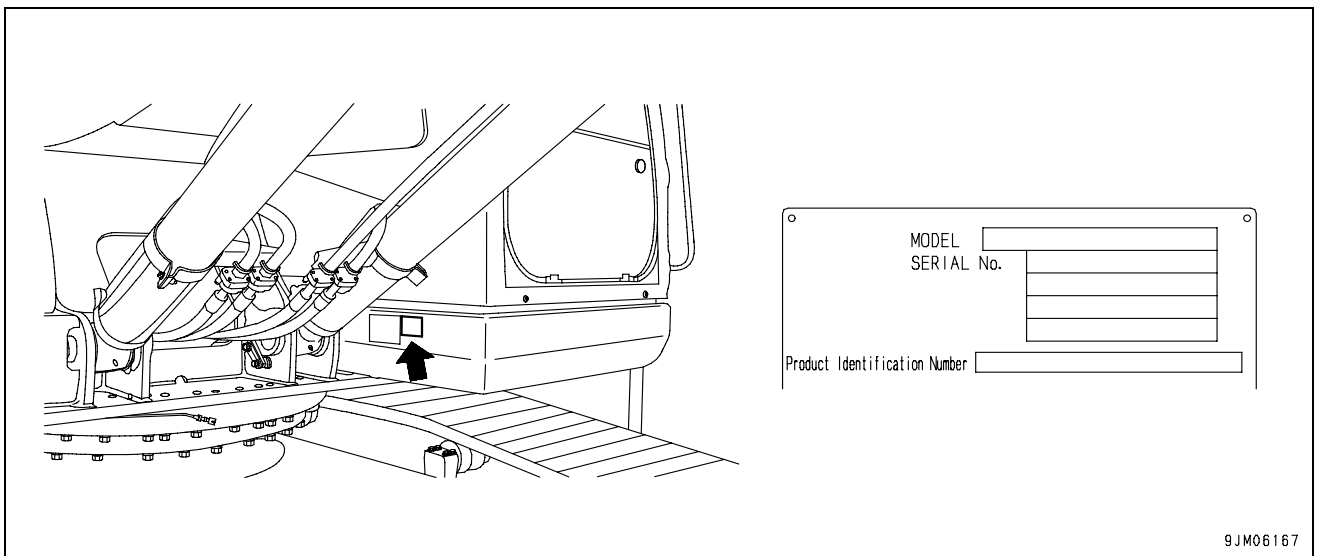
PRODUCT INFORMATION

When requesting service or ordering replacement parts, please inform your Komatsu distributor of the following items.

PRODUCT IDENTIFICATION NUMBER (PIN)/MACHINE SERIAL NO. PLATE

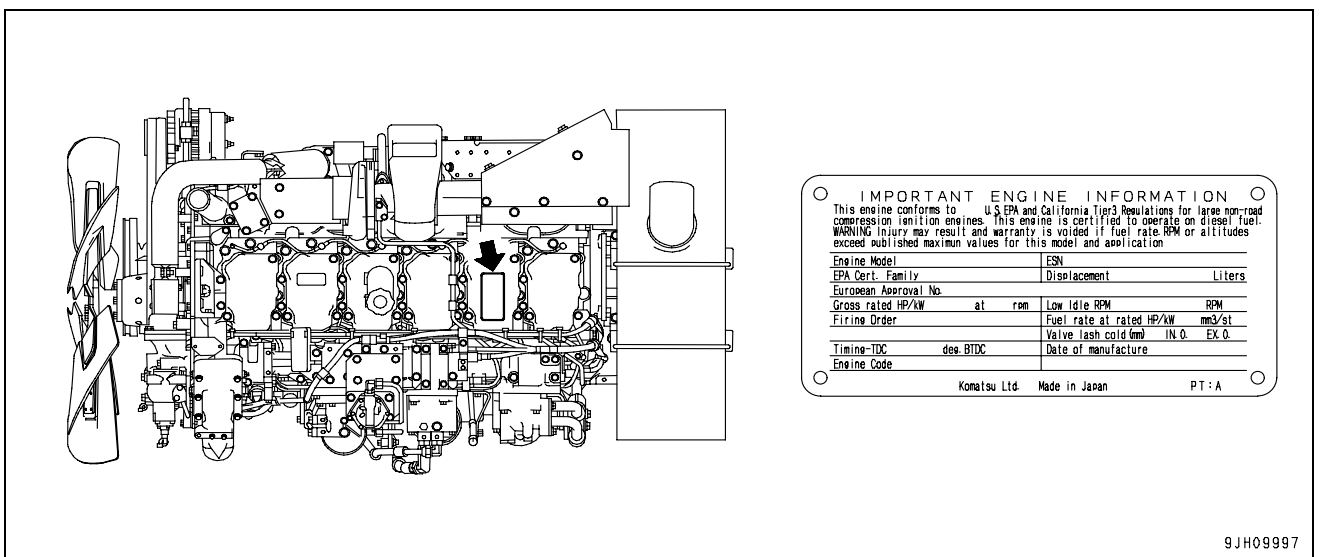
On the bottom right of the operator's cab

The design of the nameplate differs according to the territory.



EPA REGULATIONS, ENGINE NUMBER PLATE

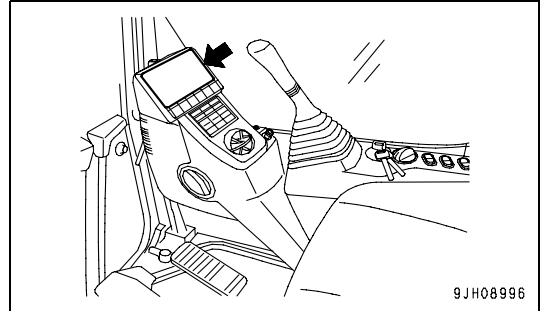
On the upper side of the engine cylinder head cover.



EPA: Environmental Protection Agency, U.S.A.

SERVICE METER LOCATION

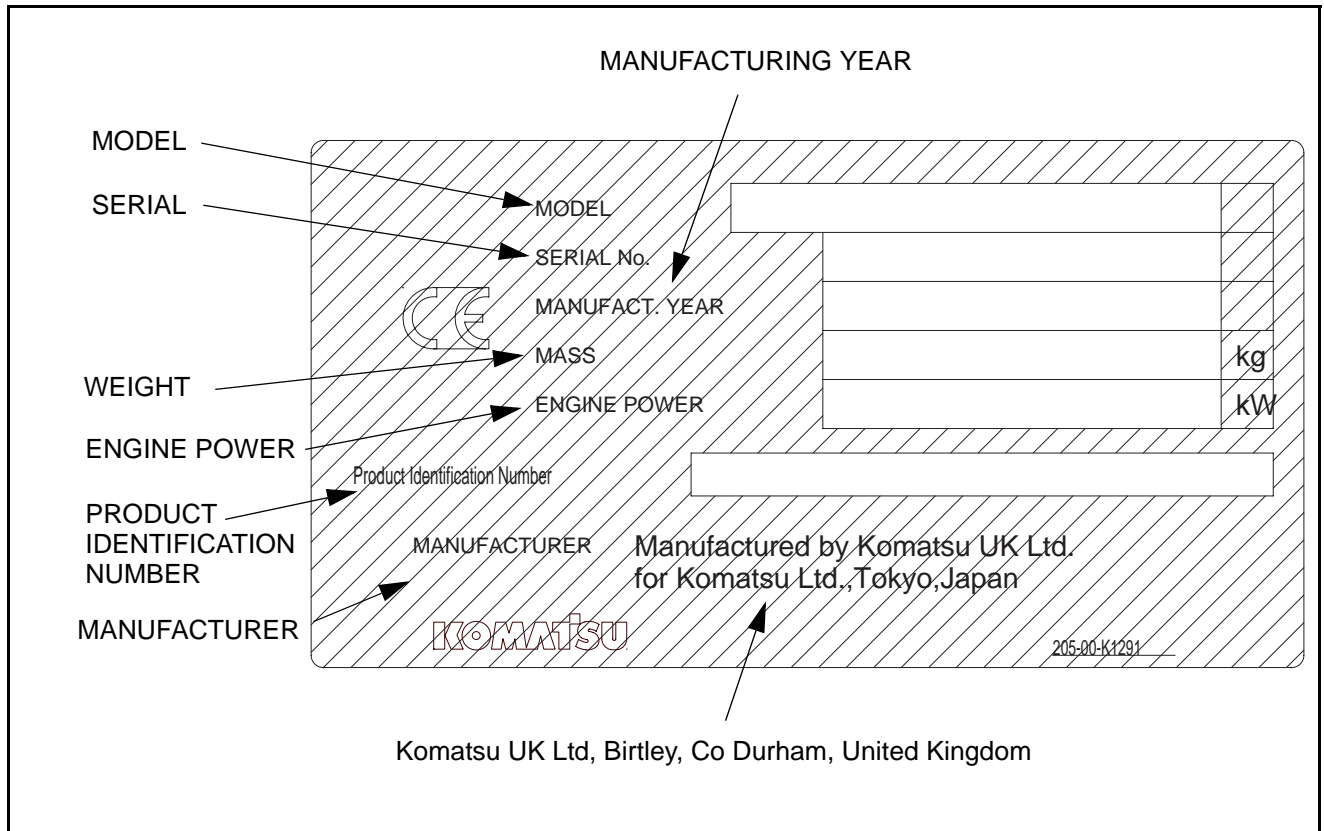
On top of the machine monitor



YOUR MACHINE SERIAL NUMBERS AND DISTRIBUTOR

Machine serial No.	
Engine serial No.	
Product identification number (PIN)	
Manufacturers name	KOMATSU UK LTD.
Address	Durham Road
	Birtley
	Chester-Le Street
	County Durham DH32QX
	United Kingdom
Distributor name	
Address	
Service Personnel	
Phone/Fax	

MACHINE SERIAL PLATE



CONTENTS

FOREWORD

FOREWORD	1-2
SAFETY INFORMATION	1-3
Noise emission levels	1-5
Vibration levels.....	1-6
Guide to Reduce Vibration Levels on Machine.....	1-6
INTRODUCTION	1-8
DIRECTIONS OF MACHINE	1-8
VISIBILITY FROM OPERATOR'S SEAT	1-9
PROXIMITY VISIBILITY	1-9
12M CIRCUMFERENCE VISIBILITY	1-9
BREAKING-IN THE NEW MACHINE	1-10
PRODUCT INFORMATION	1-11
PRODUCT IDENTIFICATION NUMBER (PIN)/MACHINE SERIAL NO. PLATE.....	1-11
EPA REGULATIONS, ENGINE NUMBER PLATE	1-11
SERVICE METER LOCATION	1-12
YOUR MACHINE SERIAL NUMBERS AND DISTRIBUTOR	1-12
MACHINE SERIAL PLATE	1-13

SAFETY

SAFETY INFORMATION	2-2
SAFETY LABELS	2-4
LOCATION OF SAFETY LABELS	2-4
SAFETY LABELS	2-5
SAFETY INFORMATION	2-13
SAFETY MACHINE OPERATION	2-22
STARTING ENGINE	2-22
OPERATION.....	2-24
TRANSPORTATION.....	2-30
BATTERY	2-31
TOWING	2-33
LIFTING OBJECTS WITH BUCKET	2-34
SAFETY MAINTENANCE INFORMATION	2-35

OPERATION

MACHINE VIEW ILLUSTRATIONS	3-2
OVERALL MACHINE VIEW.....	3-2
CONTROLS AND GAUGES.....	3-3
Machine Monitor	3-4
DETAILED CONTROLS AND GAUGES	3-5
MONITORING SYSTEM.....	3-5
Basic Operation of Machine Monitor.....	3-6
Emergency Monitors.....	3-11
Caution Monitors.....	3-13
Basic Check Monitors	3-16
Meter Display Portion	3-18
Monitor Switches Portion	3-25
Handling Function Switches	3-33
Attachment 2 Setting	3-54
SWITCHES	3-69
CONTROL LEVERS AND PEDALS	3-75
SUN ROOF	3-78
WINDSHIELD	3-79
EMERGENCY ESCAPE HAMMER	3-84
DOOR LOCK	3-85
CAP WITH LOCK.....	3-85
DRINK BOX	3-87
MAGAZINE BOX.....	3-87
ASHTRAY	3-87
AIR CONDITIONER CONTROLS.....	3-88
Air Conditioner Control Panel	3-88
Method of Operation.....	3-92
Use Air Conditioner with Care	3-98
Inspection and maintenance of Air Conditioner Equipped Machine	3-99
RADIO.....	3-100
Control Panel.....	3-100
Controls of Radio	3-102
Use Radio with Care.....	3-104
Space for radio cassette	3-104
AUXILIARY ELECTRIC POWER.....	3-105
24V Power Source.....	3-105
12V Power Source.....	3-105
FUSE	3-106
FUSIBLE LINK	3-107
CONTROLLER	3-107
TOOL BOX.....	3-108
GREASE PUMP HOLDER.....	3-108
FIRE EXTINGUISHER.....	3-108
REFUELLING PUMP	3-109
ACCUMULATOR	3-110

CONTENTS

Releasing Hydraulic Pressure With Accumulator 3-110

MACHINE OPERATIONS AND CONTROLS..... 3-111

BEFORE STARTING ENGINE 3-111

 Walk-around Checks 3-111

 Checks Before Starting..... 3-112

 Adjustment..... 3-119

 Seat Belt 3-125

 Operations Before Starting Engine 3-126

STARTING ENGINE 3-128

AFTER STARTING ENGINE 3-131

 Engine Warm Up 3-131

 Hydraulic Equipment Warm Up 3-133

 Operation After Completion Of Warm-Up Operation 3-139

STOPPING THE ENGINE 3-141

MACHINE OPERATION 3-142

 Preparations for Moving the Machine 3-142

 Moving Machine Forward 3-143

 Moving Machine Backward..... 3-144

 Stopping Machine 3-145

STEERING THE MACHINE 3-146

 Steering 3-146

SWINGING 3-148

WORK EQUIPMENT CONTROLS AND OPERATIONS 3-149

WORKING MODE..... 3-151

PROHIBITED OPERATIONS 3-153

GENERAL OPERATION INFORMATION 3-157

TRAVELING ON SLOPES..... 3-159

ESCAPE FROM MUD..... 3-161

 Track on One Side Stuck..... 3-161

 Tracks on Both Sides Stuck..... 3-161

RECOMMENDED APPLICATIONS 3-162

 Backhoe Work 3-162

 Shovel Work 3-162

 Ditching Work 3-162

 Loading Work..... 3-163

BUCKET REPLACEMENT AND INVERSION 3-164

 Replacement..... 3-164

 Inversion 3-165

PARKING MACHINE 3-166

MACHINE INSPECTION AFTER DAILY WORK 3-168

LOCKING..... 3-168

TRANSPORTATION..... 3-169

TRANSPORTATION PROCEDURE 3-169

LOADING AND UNLOADING WITH TRAILER 3-170

 Loading 3-171

 Securing Machine 3-173

Unloading.....	3-176
LIFTING MACHINE.....	3-178
TRANSPORTATION POSTURE	3-180
PROCEDURE FOR INCREASING OR REDUCING TRACK FRAME GAUGE.....	3-182
COLD WEATHER OPERATION	3-184
COLD WEATHER OPERATION INFORMATION.....	3-184
Fuel and Lubricants	3-184
Cooling System Coolant	3-184
Battery	3-185
AFTER DAILY WORK COMPLETION.....	3-186
AFTER COLD WEATHER SEASON	3-186
LONG TERM STORAGE.....	3-187
BEFORE STORAGE.....	3-187
DURING STORAGE	3-187
AFTER STORAGE.....	3-188
STARTING MACHINE AFTER LONG-TERM STORAGE	3-188
TROUBLES AND ACTIONS	3-189
RUNNING OUT OF FUEL	3-189
PHENOMENA THAT ARE NOT FAILURES.....	3-190
TOWING THE MACHINE	3-190
LIGHTWEIGHT TOWING HOLE	3-191
SEVERE JOB CONDITION	3-191
DISCHARGED BATTERY	3-192
Battery Removal and Installation.....	3-192
Battery Charges.....	3-193
Starting Engine with Booster Cables	3-194
OTHER TROUBLE	3-196
Electrical System	3-196
Chassis.....	3-197
Engine.....	3-198
Electronic Control System	3-199
Point of Contact to Telephone when Error Occurs	3-200

MAINTENANCE

MAINTENANCE INFORMATION	4-2
OUTLINE OF SERVICE.....	4-4
HANDLING OIL, FUEL, COOLANT, AND PERFORMING OIL CLINIC	4-4
OIL.....	4-4
FUEL.....	4-5
COOLANT AND WATER FOR DILUTION	4-5
GREASE.....	4-6
CARRYING OUT KOWA (Komatsu Oil Wear Analysis)	4-6
STORING OIL AND FUEL.....	4-7

CONTENTS

FILTERS	4-7
EXPLANATION OF LUBRICATION CHART DECAL	4-8
ELECTRIC SYSTEM MAINTENANCE	4-10
WEAR PARTS	4-11
WEAR PARTS LIST.....	4-11
RECOMMENDED FUEL, COOLANT, AND LUBRICANT	4-12
RECOMMENDED BRANDS, RECOMMENDED QUALITY FOR PRODUCTS OTHER THAN KOMATSU GENUINE OIL.....	4-14
TIGHTENING TORQUE SPECIFICATIONS	4-15
TIGHTENING TORQUE LIST	4-15
SAFETY CRITICAL PARTS	4-16
SAFETY CRITICAL PARTS LIST	4-16
MAINTENANCE SCHEDULE	4-17
MAINTENANCE SCHEDULE CHART.....	4-17
MAINTENANCE INTERVAL FOR HYDRAULIC BREAKER.....	4-19
MAINTENANCE PROCEDURE	4-20
INITIAL 1000 HOURS MAINTENANCE (ONLY AFTER THE FIRST 1000 HOURS)	4-20
WHEN REQUIRED	4-21
CHECK, CLEAN AND REPLACE AIR CLEANER ELEMENT	4-21
CLEAN INSIDE OF COOLING SYSTEM	4-27
CHECK AND TIGHTEN TRACK SHOE BOLTS.....	4-30
CHECK AND ADJUST TRACK TENSION.....	4-31
REPLACE BUCKET TEETH (VERTICAL PIN TYPE)	4-33
REPLACE BUCKET TEETH (HORIZONTAL PIN TYPE).....	4-36
REPLACE BUCKET SIDE CUTTER, SHROUD	4-38
ADJUST BUCKET CLEARANCE	4-39
CHECK WINDOW WASHER FLUID LEVEL, ADD FLUID	4-40
CHECK AND MAINTENANCE AIR CONDITIONER	4-41
WASH WASHABLE FLOOR.....	4-42
BLEEDING AIR FROM HYDRAULIC SYSTEM.....	4-45
CHECK BEFORE STARTING	4-47
EVERY 50 HOURS MAINTENANCE.....	4-48
LUBRICATING.....	4-48
EVERY 250 HOURS MAINTENANCE.....	4-49
LUBRICATE SWING CIRCLE	4-49
CHECK LEVEL OF BATTERY ELECTROLYTE	4-50
CHECK FAN BELT, ALTERNATOR BELT TENSION, ADJUST	4-52
CHECK AIR CONDITIONER COMPRESSOR BELT TENSION, ADJUST	4-53
EVERY 500 HOURS MAINTENANCE.....	4-54
LUBRICATING.....	4-54
REPLACE FUEL PRE-FILTER CARTRIDGE.....	4-55
CHECK SWING PINION GREASE LEVEL, ADD GREASE	4-58
CHANGE OIL IN ENGINE OIL PAN, REPLACE ENGINE OIL FILTER CARTRIDGE	4-59