

Operation & Maintenance Manual

PC210-7K PC210LC, PC210NLC-7K PC230NHD-7K PC240LC, PC240NLC-7K HYDRAULIC EXCAVATOR

SERIAL NUMBER	PC210-7K	- K40001 and up
	PC210LC-7K	- K40001 and up
	PC210NLC-7K	- K40001 and up
	PC230NHD-7K	- K40001 and up
	PC240LC-7K	- K40001 and up
	PC240NLC-7K	- K40001 and up



WARNING

Unsafe use of this machine may cause serious injury or death. Operators and maintenance personnel must read this manual before operating or maintaining this machine. This manual should be kept inside the cab for reference and periodically reviewed by all personnel who will come into contact with the machine.

KOMATSU

FOREWORD

FOREWORD

This manual provides rules and guidelines which will help you use this machine safely and effectively. The precautions in this manual must be followed at all times while operating or performing maintenance. Most accidents are caused by the failure to follow fundamental safety rules for the operation and maintenance of machines. Accidents can be prevented by knowing beforehand conditions that may cause a hazard when performing operation and maintenance.

WARNING

Operators and maintenance personnel must always do as follows before beginning operation or maintenance.

- **Always be sure to read and understand this manual thoroughly before performing operation and maintenance.**
- **Read the safety messages given in this manual and the safety labels affixed to the machine thoroughly and be sure that you understand them fully.**

Keep this manual in the storage location for the Operation and Maintenance Manual given below, and have all personnel read it periodically.

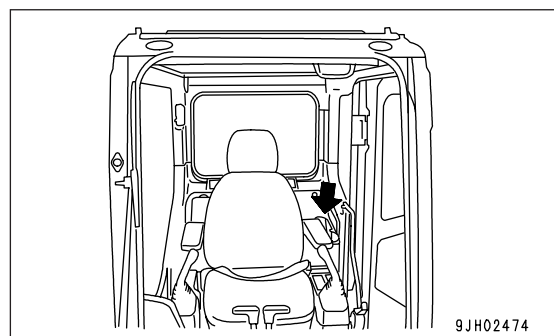
If this manual has been lost or has become dirty and cannot be read, request a replacement manual immediately from Komatsu or your Komatsu distributor.

If you sell the machine, be sure to give this manual to the new owners together with the machine.

Komatsu delivers machines that comply with all applicable regulations and standards of the country to which it has been shipped. If this machine has been purchased in another country or purchased from someone in another country, it may lack certain safety devices and specifications that are necessary for use in your country. If there is any question about whether your product complies with the applicable standards and regulations of your country, consult Komatsu or your Komatsu distributor before operating the machine.

Storage location for the Operation and Maintenance Manual:

Storage box on the left side of the operator's seat.



SAFETY INFORMATION

To enable you to use this machine safely, safety precautions and labels are given in this manual and affixed to the machine to give explanations of situations involving potential hazards and of the methods of avoiding such situations.

Signal words

The following signal words are used to inform you that there is a potentially hazardous situation that may lead to personal injury or damage.

In this manual and on machine labels, the following signal words are used to express the potential level of hazard.



DANGER

Indicates an imminently hazardous situation which, if not avoided, will result in death or serious injury.



WARNING

Indicates a potentially hazardous situation which, if not avoided, could result in death or serious injury.



CAUTION

Indicates a potentially hazardous situation which, if not avoided, may result in minor or moderate injury. This word is used also to alert against unsafe practices that may cause property damage.

Example of safety message using signal word

WARNING

To avoid hitting unlocked operation levers, lower equipment to ground and move SAFETY LOCK LEVER (located near seat) to LOCK position before getting up from the operator's seat. Sudden and unwanted machine movement can cause serious injury or death.

Other signal words

In addition to the above, the following signal words are used to indicate precautions that should be followed to protect the machine or to give information that is useful to know.

NOTICE

This word is used for precautions that must be taken to avoid actions which could shorten the life of the machine.

REMARKS

This word is used for information that is useful to know.

Safety labels

Safety labels are affixed to the machine to inform the operator or maintenance worker on the spot when carrying out operation or maintenance of the machine that may involve hazard.

This machine uses "Safety labels using words" and "Safety labels using pictograms" to indicate safety procedures.

Safety labels using pictogram

Safety pictograms use a picture to express a level of hazardous condition equivalent to the signal word. These safety pictograms use pictures in order to let the operator or maintenance worker understand the level and type of hazardous condition at all times. Safety pictograms show the type of hazardous condition at the top or left side, and the method of avoiding the hazardous condition at the bottom or right side. In addition, the type of hazardous condition is displayed inside a triangle and the method of avoiding the hazardous condition is shown inside a circle.



Komatsu cannot predict every circumstance that might involve a potential hazard in operation and maintenance. Therefore, the safety messages in this manual and on the machine may not include all possible safety precautions. If any procedures or actions not specifically recommended or allowed in this manual are used, it is your responsibility to take the necessary steps to ensure safety.

In no event should you engage in prohibited uses or actions described in this manual.

The explanations, values, and illustrations in this manual were prepared based on the latest information available at that time. Continuing improvements in the design of this machine can lead to changes in detail which may not be reflected in this manual. Consult Komatsu or your Komatsu distributor for the latest available information of your machine or for questions regarding information in this manual.

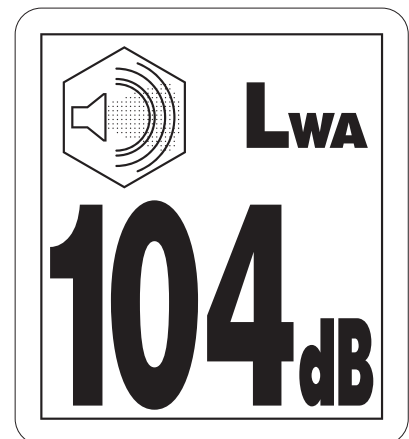
The numbers in circles in the illustrations correspond to the numbers in () in the text. (For example: ① → (1))

NOISE (PC210,210LC,210NLC, PC230NHD)

- Sound pressure level at the operator's station, measured according to ISO6396 (Dynamic test method, simulated working cycle).



- Sound power level emitted. This is the guaranteed value as specified in the European directive 2000/14/EC



VIBRATION

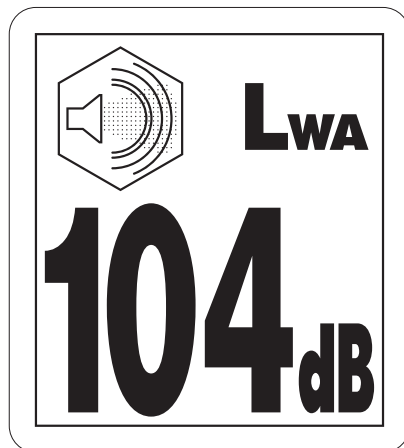
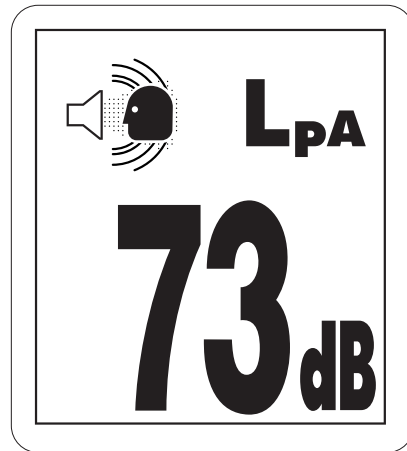
The weighted root mean square acceleration value to which the operator's arms are subjected does not exceed 2.5 m/s^2

The weighted root mean square acceleration value to which the operator's body is subjected does not exceed 0.5 m/s^2

These results were obtained by accelerometers during trench digging.

NOISE (PC240LC,240NLC)

- Sound pressure level at the operator's station, measured according to ISO6396 (Dynamic test method, simulated working cycle).
- Sound power level emitted. This is the guaranteed value as specified in the European directive 2000/14/EC



VIBRATION

The weighted root mean square acceleration value to which the operator's arms are subjected does not exceed 2.5 m/s^2

The weighted root mean square acceleration value to which the operator's body is subjected does not exceed 0.5 m/s^2

These results were obtained by accelerometers during trench digging.

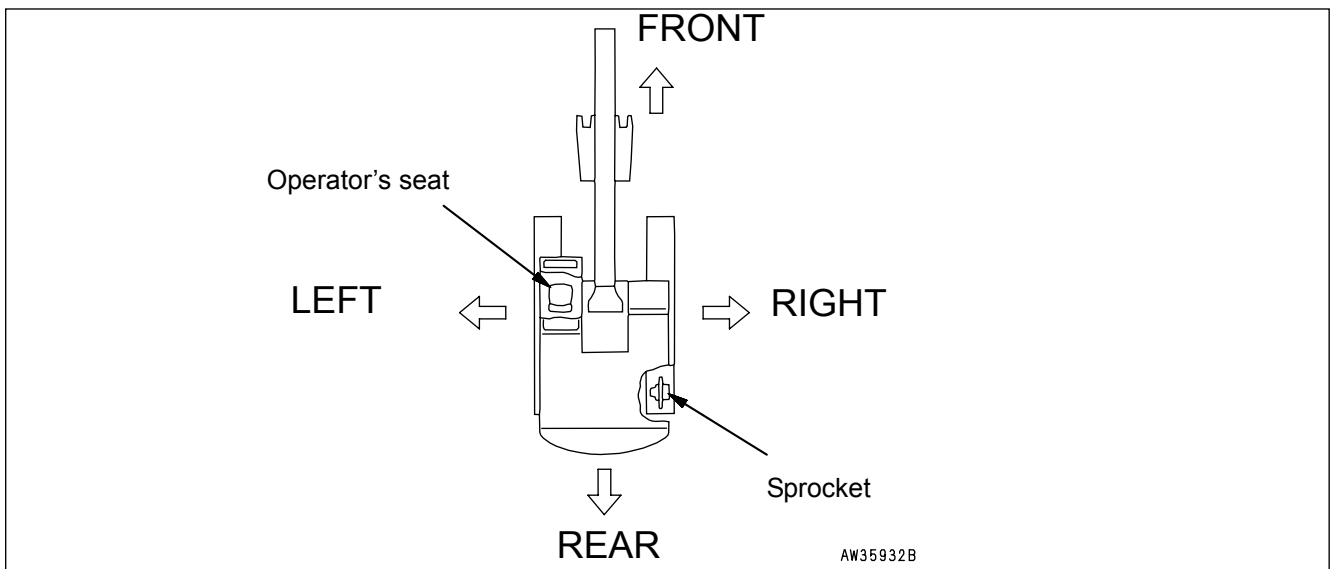
INTRODUCTION

This Komatsu HYDRAULIC EXCAVATOR is designed to be used mainly for the following works:

- Digging work
- Leveling work
- Ditching work
- Loading work
- Demolition work

See the section "RECOMMENDED APPLICATIONS (PAGE 166)" for further details.

DIRECTIONS OF MACHINE



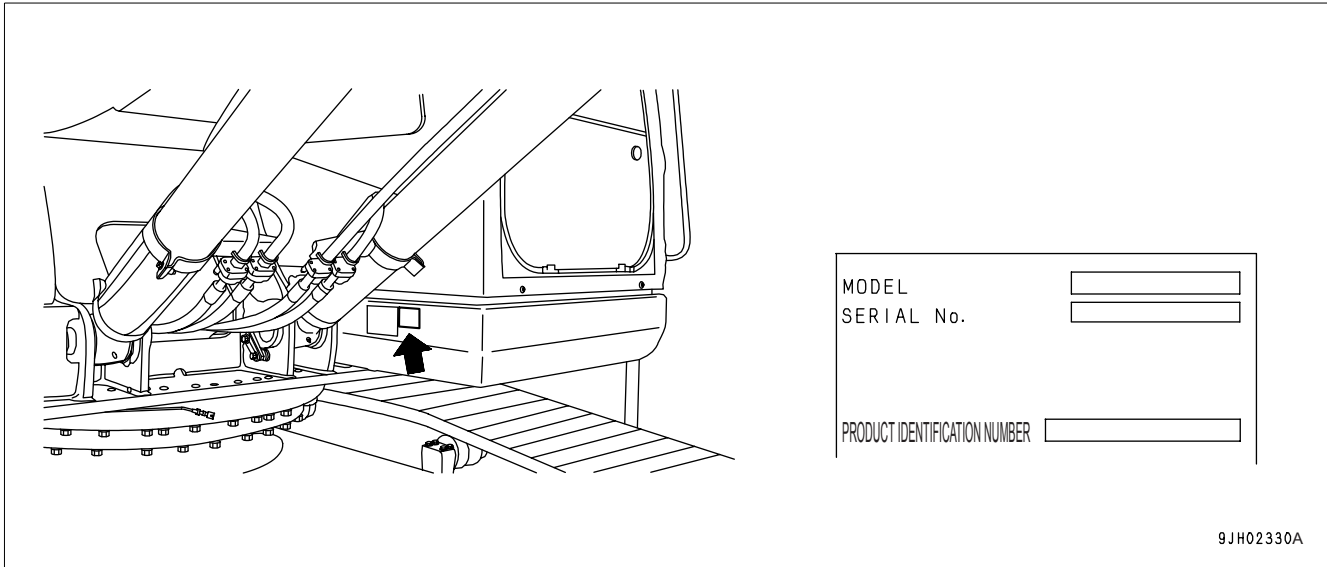
In this manual, the terms front, rear, left, and right refer to the travel direction as seen from the operator's cab when the operator's cab is facing the front and the sprocket is at the rear of the machine.

PRODUCT INFORMATION

When requesting service or ordering replacement parts, please inform your Komatsu distributor of the following items.

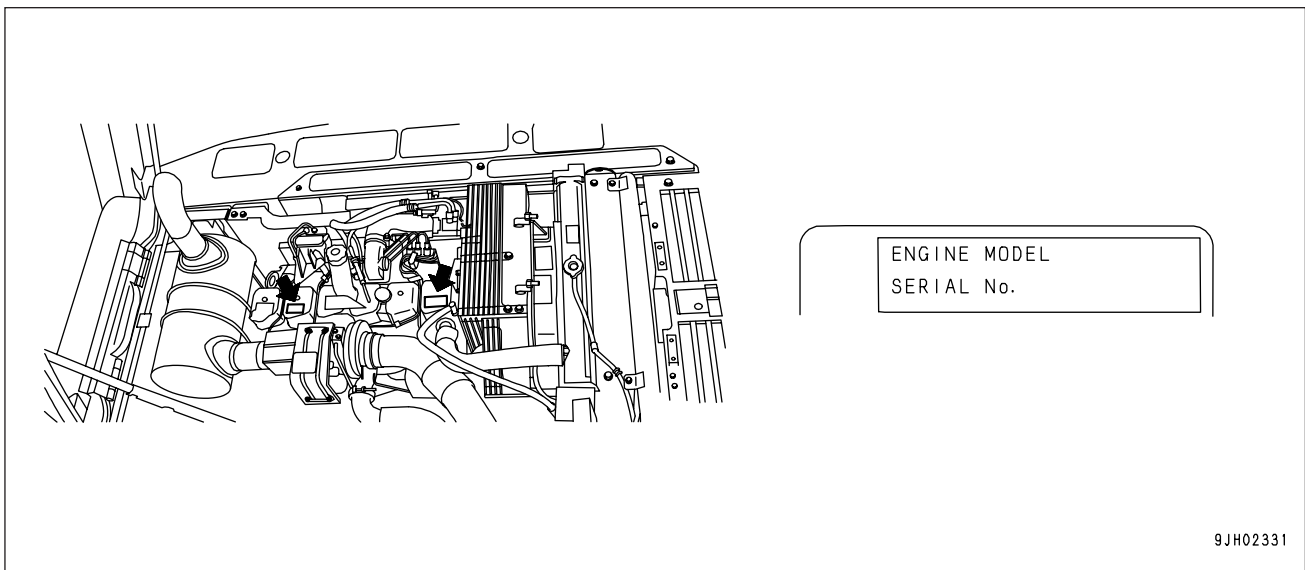
MACHINE SERIAL NUMBER PLATE AND ITS LOCATION

On the bottom right of the operator's cab



ENGINE SERIAL NUMBER PLATE AND ITS LOCATION

On the top of the No.1 cylinder head cover (The EPA auxiliary nameplate is on the top of the No. 5 cylinder head cover.)



EPA: Environmental Protection Agency, U.S.A.

SERVICE METER LOCATION

On top of the machine monitor

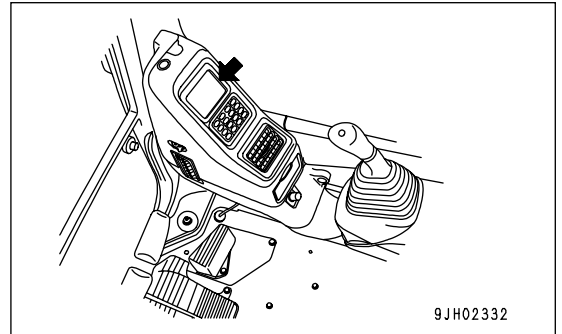


TABLE TO ENTER SERIAL NO. AND DISTRIBUTOR

Machine serial No.

Engine serial No.

Product Identification Number

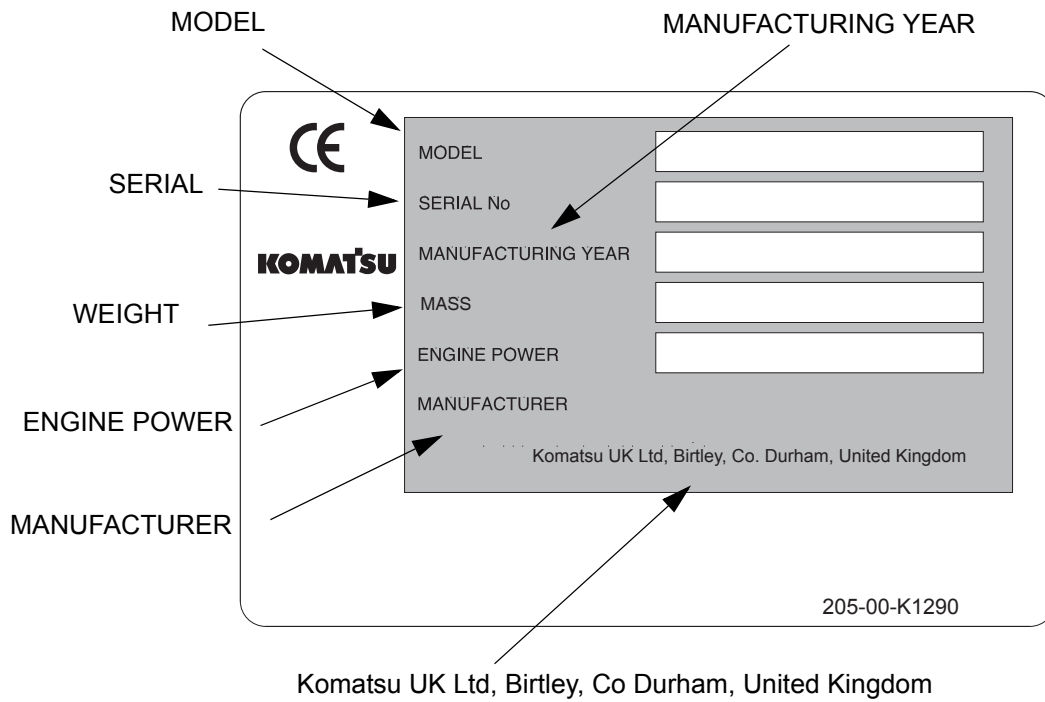
Manufacturers name:	KOMATSU UK Ltd.
Address:	Durham Road Birtley Chester-Le street County Durham DH32QX United Kingdom

Distributor
Address

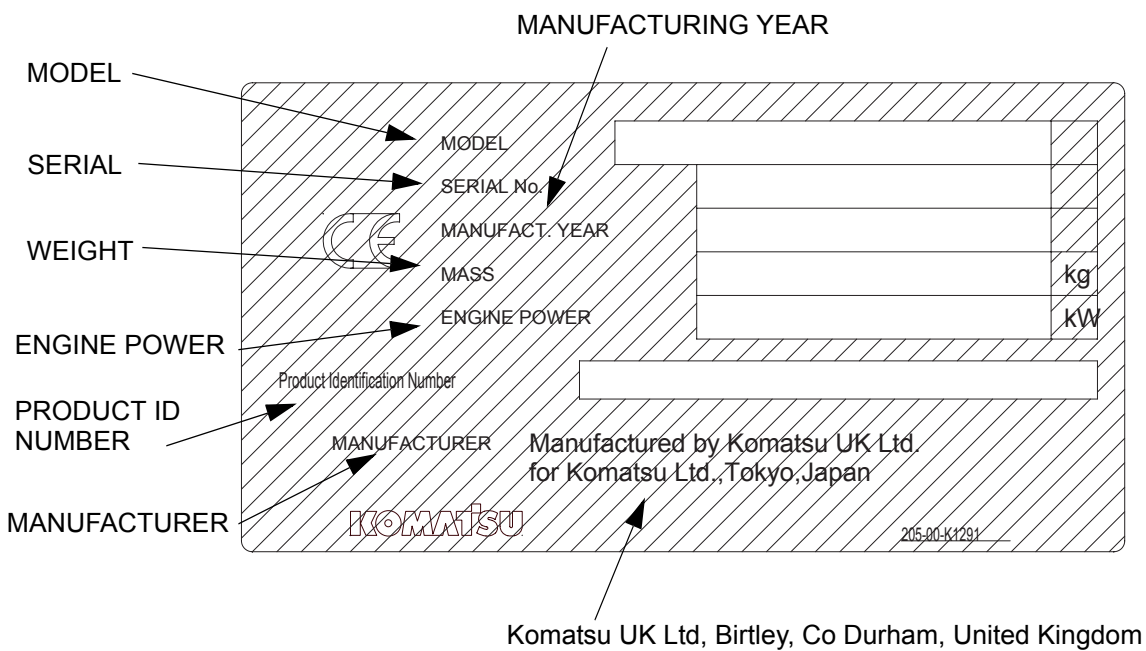
Phone

MACHINE SERIAL PLATE

Valid until 31 December 2003



Valid as of 1 January 2004



CONTENTS

FOREWORD

FOREWORD 2

SAFETY INFORMATION 3

 NOISE (PC210,210LC,210NLC, PC230NHD) 5

 VIBRATION 5

 NOISE (PC240LC,240NLC) 6

 VIBRATION 6

INTRODUCTION 7

 DIRECTIONS OF MACHINE 7

PRODUCT INFORMATION 8

 MACHINE SERIAL NUMBER PLATE AND ITS LOCATION 8

 ENGINE SERIAL NUMBER PLATE AND ITS LOCATION 8

 SERVICE METER LOCATION 9

 TABLE TO ENTER SERIAL NO. AND DISTRIBUTOR 9

 MACHINE SERIAL PLATE 10

SAFETY

SAFETY INFORMATION 18

POSITION FOR ATTACHING SAFETY LABELS 20

 POSITION FOR ATTACHING SAFETY LABELS 20

 SAFETY LABELS 21

SAFETY INFORMATION 28

SAFETY MACHINE OPERATION 38

 STARTING ENGINE 38

 OPERATION 40

 TRANSPORTATION 46

 BATTERY 47

 TOWING 49

 LIFTING OBJECTS WITH BUCKET 50

SAFETY MAINTENANCE INFORMATION 51

OPERATION

GENERAL VIEW 60

 GENERAL VIEW OF MACHINE 60

GENERAL VIEW CONTROLS AND GAUGES.....	61
EXPLANATION OF COMPONENTS.....	62
MACHINE MONITOR	62
BASIC CHECK ITEMS.....	65
SWITCHES	87
CONTROL LEVERS, PEDALS	93
CEILING WINDOW.....	96
FRONT WINDOW.....	97
EMERGENCY EXIT FROM OPERATOR'S CAB	102
DOOR LOCK	102
CAP, COVER WITH LOCK.....	103
HOT AND COOL BOX.....	104
CAB RADIO	104
MAGAZINE BOX.....	104
ASHTRAY	105
HANDLING AIR CONDITIONER	106
CAR RADIO	119
FUSE	120
FUSIBLE LINK.....	121
CONTROLLER (COMPUTER)	122
TOOLBOX.....	122
GREASE GUN HOLDER.....	122
REFUELLING PUMP	123
HANDLING THE ACCUMULATOR	123
MACHINE OPERATIONS AND CONTROLS.....	125
BEFORE STARTING ENGINE	125
STARTING ENGINE	138
AFTER STARTING ENGINE	142
IN COLD AREAS (AUTOMATIC WARMING-UP OPERATION)	146
STOPPING THE ENGINE	150
CHECK AFTER SHUTTING OFF ENGINE	150
MACHINE OPERATION	151
STEERING THE MACHINE.....	155
SWINGING	157
WORK EQUIPMENT CONTROLS AND OPERATIONS	158
OPERATING WORKING MODE	159
PROHIBITED OPERATIONS	160
GENERAL OPERATION INFORMATION	162
TRAVELING ON SLOPES.....	163
ESCAPE FROM MUD.....	165
RECOMMENDED APPLICATIONS.....	166
REPLACEMENT AND INVERSION OF BUCKET	168
PARKING MACHINE	171
CHECK AFTER FINISHING WORK.....	172
LOCKING.....	173
TRANSPORTATION.....	174

TRANSPORTATION PROCEDURE.....	174
SPECIAL TRANSPORTATION INSTRUCTIONS FOR PC210NLC-7 AND PC230NHD-7	174
LOADING AND UNLOADING WITH TRAILER	175
LIFTING MACHINE.....	182
COLD WEATHER OPERATION	184
COLD WEATHER OPERATION INFORMATION.....	184
AFTER DAILY WORK COMPLETION.....	186
AFTER COLD WEATHER SEASON	187
LONG TERM STORAGE.....	188
BEFORE STORAGE.....	188
DURING STORAGE	188
AFTER STORAGE.....	189
TROUBLESHOOTING.....	190
AFTER RUNNING OUT OF FUEL.....	190
PHENOMENA THAT ARE NOT FAILURES.....	190
TOWING THE MACHINE	191
LIGHTWEIGHT TOWING HOOK.....	191
PRECAUTIONS ON PARTICULAR JOBSITES	192
DISCHARGED BATTERY	193
OTHER TROUBLE	197
MAINTENANCE	
MAINTENANCE INFORMATION	204
LUBRICANTS, COOLANT AND FILTERS	207
HANDLING OIL, FUEL, COOLANT, AND PERFORMING OIL CLINIC	207
EXPLANATION OF LUBRICATION CHART DECAL	211
ELECTRIC SYSTEM MAINTENANCE	213
HANDLING HYDRAULIC SYSTEM.....	213
WEAR PARTS LIST	214
USE OF FUEL, COOLANT AND LUBRICANTS ACCORDING TO AMBIENT TEMPERATURE	215
PROPER SELECTION OF FUEL, COOLANT AND LUBRICANTS	215
TIGHTENING TORQUE SPECIFICATIONS	218
TIGHTENING TORQUE LIST.....	218
PERIODIC REPLACEMENT OF SAFETY CRITICAL PARTS	219
SAFETY CRITICAL PARTS.....	219
MAINTENANCE SCHEDULE.....	220
MAINTENANCE SCHEDULE CHART.....	220
MAINTENANCE INTERVAL FOR HYDRAULIC BREAKER.....	222
MAINTENANCE PROCEDURE.....	223

INITIAL 250 HOURS MAINTENANCE (ONLY AFTER THE FIRST 250 HOURS).....	223
WHEN REQUIRED.....	224
CHECK BEFORE STARTING.....	248
EVERY 100 HOURS MAINTENANCE.....	248
EVERY 250 HOURS MAINTENANCE.....	250
EVERY 500 HOURS MAINTENANCE.....	257
EVERY 1000 HOURS MAINTENANCE.....	265
EVERY 2000 HOURS MAINTENANCE.....	268
EVERY 4000 HOURS MAINTENANCE.....	270
EVERY 5000 HOURS MAINTENANCE.....	271

SPECIFICATIONS

SPECIFICATIONS	274
EXPLANATION OF LIFTING CAPACITY CHART (PC210, PC210LC, PC210NLC-7K).....	277
EXPLANATION OF LIFTING CAPACITY CHART (PC210, PC210LC, PC230NHD - 2 PIECE BOOM)...	281
EXPLANATION OF LIFTING CAPACITY CHART (PC230NHD-7K).....	284
EXPLANATION OF LIFTING CAPACITY CHART (PC240LC, PC240NLC-7K).....	286
EXPLANATION OF LIFTING CAPACITY CHART (PC240LC,NLC-7K 2 PIECE BOOM).....	289

ATTACHMENTS AND OPTIONS

GENERAL PRECAUTIONS	294
PRECAUTIONS RELATED TO SAFETY.....	294
PRECAUTIONS WHEN INSTALLING ATTACHMENTS.....	296
HANDLING BUCKET WITH HOOK	297
CHECKING FOR DAMAGE TO BUCKET WITH HOOK.....	297
PROHIBITED OPERATIONS.....	297
MACHINES READY FOR ATTACHMENTS	298
EXPLANATION OF COMPONENTS.....	298
HYDRAULIC CIRCUIT.....	301
ATTACHMENT MOUNTING/DISMOUNTING PROCEDURE.....	304
OPERATION.....	306
LONG-TERM STORAGE.....	308
SPECIFICATIONS.....	308
ATTACHMENT GUIDE	309
COMBINATIONS OF WORK EQUIPMENT.....	309
SELECTION OF TRACK SHOES.....	312
SELECTION OF BUCKET TEETH.....	313
STANDARDS FOR SELECTING VERTICAL PIN TYPE AND HORIZONTAL PIN TYPE TEETH.....	313
HANDLING OF RUBBER PAD SHOE AND ROAD LINER.....	314
HANDLING TRAPEZOIDAL BUCKET.....	316
HANDLING EXTENSION ARM.....	317

HANDLING CLAMSHELL BUCKET	318
RECOMMENDED ATTACHMENT OPERATIONS	319
HYDRAULIC BREAKER	319
2-PC BOOM	324
FEATURES OF 2-PIECE BOOM & ARM	324
OPERATION	325
TRANSPORTATION	328
STRAIGHT BOOM PC210/240-7K	331
OPERATION	331
WORKING RANGE (PC 210 STRAIGHT BOOM)	335
TRANSPORTATION (PC 210 Straight Boom equipment)	336
WORKING RANGE (PC 240 STRAIGHT BOOM)	337
TRANSPORTATION (PC 240 Straight Boom equipment)	338
SUPER LONG FRONT BOOM AND ARM PC210/240-7	
OPERATION INSTRUCTION FOR SUPER LONG FRONT BOOM AND ARM	340
CONTROL LEVERS, PEDALS	345
TRANSPORT & STORAGE OF SUPER LONG FRONT MACHINE	348
WORKING RANGE OF SUPER LONG FRONT	350
LIFTING CAPACITY PC210 LC 15 m SUPER LONG FRONT	351
LIFTING CAPACITY PC210 NLC 15 m SUPER LONG FRONT	352
LIFTING CAPACITY PC240 LC 18 m SUPER LONG FRONT	353
LIFTING CAPACITY PC240 NLC 18 m SUPER LONG FRONT	354
MAINTENANCE	355
SPECIAL SERVICE REQUIREMENTS FOR SUPER LONG FRONT WORK EQUIPMENT	355
EVERY 50 HOURS SERVICE	356
EVERY 100 HOURS SERVICE	357

SAFETY

WARNING

Please read and make sure that you fully understand precautions described in this manual and the safety labels on the machine. When operating or servicing the machine, always follow these precautions strictly.

SAFETY INFORMATION

SAFETY INFORMATION	18
POSITION FOR ATTACHING SAFETY LABELS	20
POSITION FOR ATTACHING SAFETY LABELS	20
SAFETY LABELS	21
SAFETY INFORMATION	28
SAFETY RULES	28
IF ABNORMALITIES ARE FOUND	28
WORKING WEAR AND PERSONAL PROTECTIVE ITEMS	28
FIRE EXTINGUISHER AND FIRST AID KIT	28
SAFETY EQUIPMENT	29
KEEP MACHINE CLEAN	29
KEEP OPERATOR'S COMPARTMENT CLEAN	29
LEAVING OPERATOR'S SEAT WITH LOCK	29
HANDRAILS AND STEPS	30
MOUNTING AND DISMOUNTING	31
NO PERSONS ON ATTACHMENTS	31
BURN PREVENTION	31
FIRE PREVENTION AND EXPLOSION PREVENTION	32
ACTION IF FIRE OCCURS	33
WINDSHIELD WASHER FLUID	33
FALLING OBJECTS, FLYING OBJECTS AND INTRUDING OBJECTS PREVENTION	33
ATTACHMENT INSTALLATION	33
ATTACHMENT COMBINATIONS	34
CAB WIDOW GLASSES	34
UNAUTHORIZED MODIFICATIONS	34
SAFETY AT JOBSITE	34
WORKING ON LOOSE GROUND	34
DISTANCE TO HIGH VOLTAGE CABLES	35
ENSURE GOOD VISIBILITY	35
VENTILATION FOR ENCLOSED AREA	36
SIGNALMAN'S SIGNAL AND SIGNS	36
EMERGENCY EXIT FROM OPERATOR'S CAB	36
ELECTROMAGNETIC INTERFERENCE	36
ASBESTOS DUST HAZARD PREVENTION	37
SAFETY MACHINE OPERATION	38
STARTING ENGINE	38
CHECKS BEFORE STARTING ENGINE	38
SAFETY RULES FOR STARTING ENGINE	39
STARTING ENGINE IN COLD WEATHER	39
OPERATION	40
CHECKS AFTER STARTING ENGINE	40
SAFETY RULES FOR CHANGING MACHINE DIRECTIONS	40
SAFETY RULES FOR TRAVELLING	41
TRAVELLING ON SLOPES	42
OPERATIONS ON SLOPES	43
PROHIBITED OPERATIONS	43
OPERATIONS ON SNOW	45
PARKING MACHINE	45
TRANSPORTATION	46