

Field Assembly Instruction

HYDRAULIC
EXCAVATOR

PC800 -8 PC800LC -8
PC800SE -8
PC850 -8 PC850SE -8

SERIAL NUMBERS PC800-50001 and up
PC850-10001

ecot3

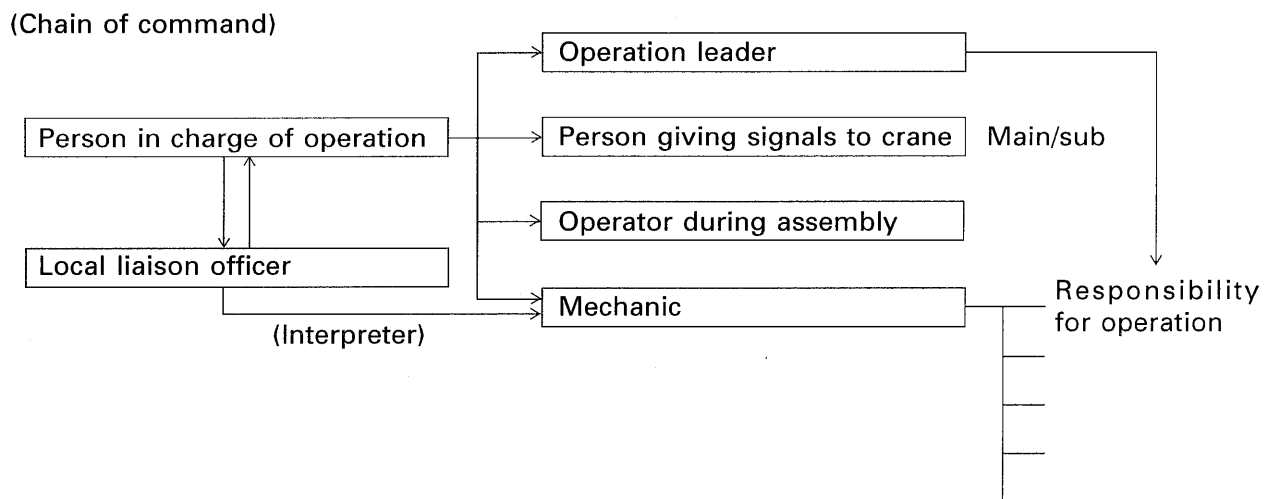
KOMATSU

FOREWORD

With this machine, the work equipment is extremely heavy and the hydraulic pressure of the chassis is used to install it efficiently. For this reason, start the engine and actuate the hydraulic cylinders.

Before starting the engine and assembling the work equipment, it is necessary to carry out thorough inspection and maintenance. In addition, this work is frequently carried out with more than one worker in a dangerous place and posture. To ensure safety, carry out a safety meeting before starting and decide the operation leader and the person to give signals to the crane to ensure that all workers can carry out the operation in safety.

Particularly in places where the workers speak different languages or have different customs, there are various causes of safety problems, so the local liaison officer and person in charge of the operation should consider fully the above points and take action to ensure safety.



When carrying out assembly in local areas, all workers must co-operate to ensure safety, product quality, and delivery time while carrying out the operation swiftly.

When the work equipment is installed, the engine must be operated. Accordingly, before installing the work equipment, inspect and maintain the machine thoroughly.

Note that this manual does not describe the whole specification of the machine but describes only the basic specification.

If you have any question when dividing and transporting the machine by yourself in future, ask one of our distributors.

CONTENTS

Specifications.....	1
Precautions for Field Assembly	2
Disposal of Removed Parts	3
Assembling Procedures, Applicable Equipment and Schedule	4
Kit Layout Diagram	5
Transportation.....	6
List of Tools for Field Assembling	12
Tightening Torque.....	13
Coating Materials	17
A. Assembly of Chassis	19
A- 1. Installation of Left and Right Track Frames	20
A- 2. Installation of Travel Pipe	24
A- 3. Installation of Top Guard	27
A- 4. Installation of Radiator Cover	28
A- 5. Installation of Rearview Mirror	29
A- 6. Installation of Left Side Step	33
A- 7. Installation of Handrail	34
A- 8. Installation of Handrail (With top guard)	35
A- 9. Installation of Muffler Tail Tube.....	37
A-10. Sticking Sheet to Counterweight	38
A-11. Installation of Counterweight	39
A-12. Installation of KOMTRAX Antenna (if equipped)	40
A-13. Installation of Step Light	41
A-14. Air Bleeding of Travel Motor	43
A-15. Installation of Travel Piping Cover.....	44
A-16. Testing Track Shoe Tension.....	46
A-17. Check Fuel, Coolant and Oil Levels	49
A-18. Parts to be Touched up after Field Assembly.....	51
B. Assembling of Work Equipment of Backhoe	53
B- 1. Assembly of Arm Cylinder	54
B- 2. Connection of Arm Cylinder Hoses.....	55
B- 3. Installation of Boom Cylinder Foot.....	57
B- 4. Relieving Remaining Pressure from Hydraulic Circuit	58
B- 5. Installation of Boom Cylinder Hoses.....	59
B- 6. Installation of Boom Foot Dust Seal	60
B- 7. Assembly of Boom Assembly	61
B- 8. Hose Connection of Arm and Bucket Circuits.....	62
B- 9. Installation of Quick Return Hose	63
B-10. Installation of Boom Cylinder	64
B-11. Installation of Arm Assembly	65
B-12. Installation of Hose between Boom and Bucket Cylinder.....	67
B-13. Installation of Bucket Assembly.....	68
B-14. Lubrication Piping to Work Equipment	69
B-15. Wiring of Work Equipment.....	70
B-16. Greasing after Assembling Work Equipment.....	71
B-17. Air Bleeding from Hydraulic Cylinder.....	72

C. Assembling of Work Equipment of Loading Shovel.....	73
C- 1. Releasing residual pressure in hydraulic circuit.....	74
C- 2. Pulling out boom foot pin and boom cylinder foot pin.....	75
C- 3. Installation of boom and arm assembly.....	76
C- 4. Installation of flushing piping between chassis and boom.....	77
C- 5. Installation of flushing piping for boom cylinder and arm cylinder.....	78
C- 6. Installation of flushing piping for bucket cylinder.....	79
C- 7. Installation of flushing piping for bottom dump cylinder.....	80
C- 8. Installation of boom cylinder.....	82
C- 9. Installation of boom cylinder foot.....	83
C-10. Installation of boom cylinder hoses.....	84
C-11. Installation of boom cylinder rod pin.....	85
C-12. Installation of arm cylinder hoses.....	86
C-13. Installation of bucket cylinder.....	87
C-14. Installation of bucket cylinder hose.....	88
C-15. Installation of connecting hoses between chassis and boom top.....	89
C-16. Installation of bottom dump cylinder hoses.....	90
C-17. Installation of bucket assembly.....	91
C-18. Installation of working lamps.....	93
C-19. Installation of work equipment grease piping.....	94
C-20. Greasing after assembling of work equipment.....	95
C-21. Bleeding air from work equipment circuit.....	96
D. Assembling of Counterweight Remover.....	97
D- 1. Installation of Rubber Cushions.....	98
D- 2. Adjustment of Shims for Counterweight.....	99
D- 3. Greasing.....	104
D- 4. Installation of Counterweight Remover.....	105
D- 5. Installation of Covers.....	106
D- 6. Installation of Hoses.....	107
D- 7. Bleeding Air from Counterweight Remover Circuit.....	110
D- 8. Installation of Counterweight.....	111
D- 9. Installation of Accessories.....	113
D-10. Check of Operation.....	114
M. Procedure for Inspection and Maintenance after Completion of Assembly.....	115
M- 1. Inspection of Oil Level in Hydraulic Tank and Refill.....	116
M- 2. Replacement of Return Filter (Standard Filter to Flushing Filter).....	118
M- 3. Flushing of Hydraulic Circuit.....	119
M- 4. Replacement of Return Filter (Flushing Filter to Standard Filter).....	121
M- 5. Error Code.....	123

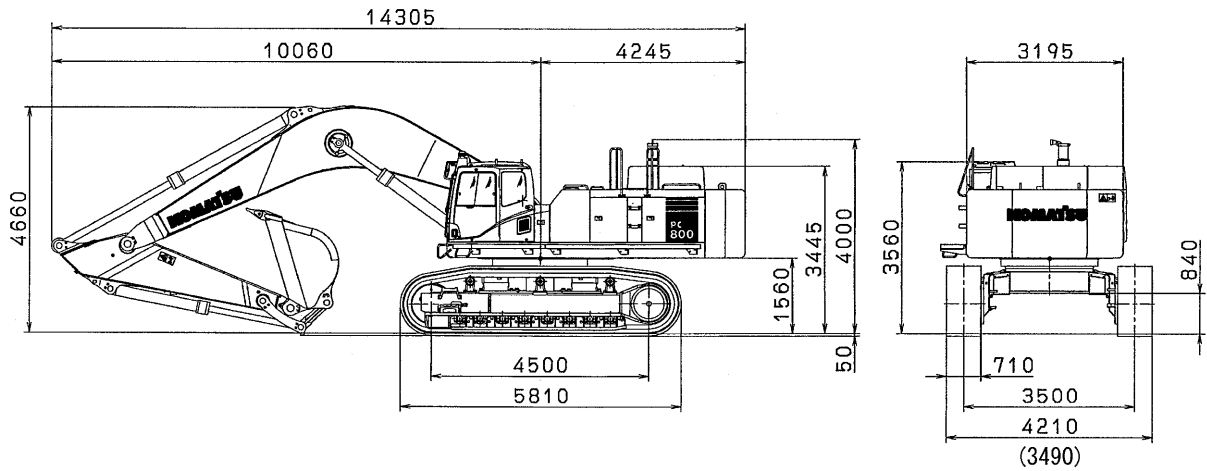
Field Assembly Inspection Report (Backhoe)

Field Assembly Inspection Report (Loading Shovel)

SPECIFICATIONS

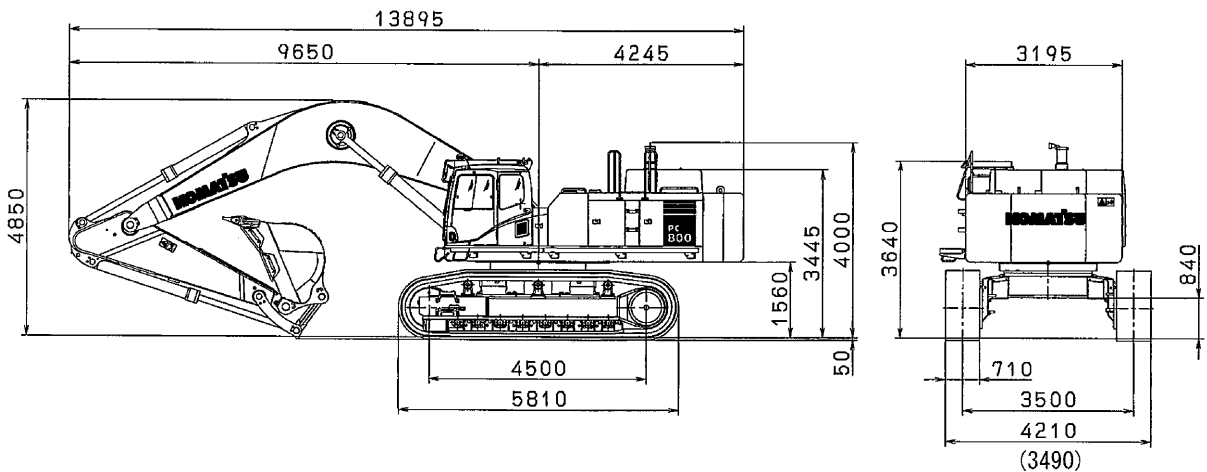
Machine model		PC800-8	PC800LC-8	PC800SE-8	PC850-8	PC850SE-8
Weight of machine	kg	75,000	77,200	76,000	79,500	79,100
Bucket capacity	m ³	3.1	3.1	4.0	3.4	4.3
Engine model	—	SAA6D140E-5				
Flywheel horsepower	kW/rpm {HP/rpm}	363/1,800 {486/1,800}				
Min. ground clearance	mm	840				
Travel speed (Low/High)	km/h	2.8/4.2				
Swing speed	rpm	6.8				

PC800-8



★The figures in () show the value when the track width is reduced.

PC850-8



★The figures in () show the value when the track width is reduced.

PRECAUTIONS FOR FIELD ASSEMBLY

1. Selection of work place

- 1) When selecting a work place, consider the following.
 - Is the work place sufficiently wide for loading and unloading the machine? (See the kit layout drawing.)
 - Is the ground sufficiently hard? (The machine and crane truck must not sink into the ground.)
 - Is the ground flat? (The ground surface must not be uneven or sloping.)
 - Is the road to inlet/outlet of the work place sufficient for turning the trailer and crane truck?
- 2) Take care extremely that dirt or water will not enter the hydraulic circuit while it is assembled.
- 3) Avoid working outdoors while strong wind is blowing or it is raining.
- 4) Take measures to protect the machine from sand, dirt and rainwater while the work is stopped.

2. How to do work

The work supervisor or the work leader should not do the work while reading this manual but should read and understand this manual thoroughly and then start the work.

In particular, write the "Precautions" for each work process in a sheet to explain or stick that sheet to the work place so that all the workers will observe the precautions.

3. Preparation and check of protective gear, slings and tools

The work supervisor or the work leader must perform the following checks about protective gear, slings and tools.

- 1) Are all the workers wearing helmets and other protective gear which they are obliged to wear?
If special protective gear is necessary, check that it is prepared and can be used without problem.
- 2) Are all the slings and tools prepared? Check in advance that they are ready to be used without problem. In particular, check wooden blocks for internal decay and cracking.

4. Check during actual work

The work supervisor or the work leader must check the following items constantly and make all the workers observe them.

- 1) Are the parking brakes of the trailer and crane truck applied securely and are their wheels locked with chocks during work? Are outriggers, if installed, used securely?
- 2) Are the temperature and pressure of the engine, hydraulic oil, coolant, etc. lowered sufficiently during work?
- 3) Is horn or another signal is made to warn around when the engine is started? In addition, is it checked that work equipment control lever and other control levers are in neutral and the fuel control dial (or fuel control lever) is in the low idle position?
- 4) Is the balance of the slung item checked extremely during sling work with the crane?
- 5) Is entry prohibition for outsiders to the work place observed?

5. The work supervisor or the work leader is required to hold a meeting with all the workers at the beginning of every morning and explain the work plan of the day to them and give them instructions to observe the safe work.

DISPOSAL OF REMOVED PARTS

As described in "FOREWORD", when this machine is transported, it is divided into some units such as the body, undercarriage, cab, work equipment, etc. according to the transportation measure, regulations, etc.



Accordingly, the hydraulic pipings and hydraulic hoses to connect the units, oil inlets and outlets of the hydraulic devices, and parts which must not be damaged are plugged or covered to prevent oil leakage, entry of dirt and dust, and damage during transportation.

In addition, fixing jigs are used to prevent a trouble caused by a fall or a shake during transportation and to facilitate loading, unloading and crane work.

The above plugs, jigs, etc. are removed when the machine is assembled and become unnecessary after completion of the machine. Since they are useful when the machine needs to be transported in future, however, we recommend you to keep them as long as possible.

ASSEMBLING PROCEDURES, APPLICABLE EQUIPMENT AND SCHEDULE

4 Divisions

Days			
<p>Assembly unit</p>	<p>Base machine</p> <p>① Left track frame ② Right track frame ③ Axle assembly</p> <p>④ Upper structure</p>	<p>⑤ Counterweight ⑥ Platform group · Inspection of oil level and coolant level</p>	<p>Backhoe</p> <p>Loading shovel-type excavator</p> <p>⑦ Assembling of work equipment</p> <p>· Inspection of oil level and coolant level · Air bleeding from work equipment cylinder · Flushing of hydraulic circuit · Adjustment of track tension · Performance test</p>
Crane	<p>(Two)</p> <p>45t</p> <p>45t</p>	<p>25t</p>	
Air compressor	<p>Min. 0.7 MPa</p> <p>Min. 1.5 m³/min</p>		
Worker	<p>Leader + 3 mechanics</p>		
	<p>Start of assembling</p> <p>· Meeting with all workers</p>	<p>Completion of Installation of unit assembly to body</p>	<p>Completion of body assembling</p> <p>· Completion of general assembling</p>

KIT LAYOUT DIAGRAM

- The dimensions given below are the minimum dimensions needed.
- The kit dimensions in the diagram are outline dimensions.
- When selecting a place, see precautions for "FIELD ASSEMBLING".

