

# Operation & Maintenance Manual

# GALEO

# PC30MR-2

# PC35MR-2

## HYDRAULIC EXCAVATOR

SERIAL NUMBER

**PC30MR-2 20001** and up

**PC35MR-2 5001** and up



### WARNING

Unsafe use of this machine may cause serious injury or death. Operators and maintenance personnel must read this manual before operating or maintaining this machine.

This manual should be kept inside the cab for reference and periodically reviewed by all personnel who will come into contact with the machine.





## 1.1 FOREWORD

- This manual has been carried out by Komatsu Utility in order to supply their customers with all the necessary information on the machine and the safety regulations related to it, together with the use and maintenance instructions that enable the operator to exploit the capacity of the machine with optimal results and to keep the machine efficient over time.
- The operation manual, together with the spare parts catalogue, is an integral part of the machine and must accompany it, even when it is resold, until its final disposal.
- The manual must be handled with the greatest care and always kept on board the machine, so that it can be consulted at any moment; it must be placed in the appropriate compartment inside the seat support, where also the ownership documents and the logbook are usually kept.
- This manual must be given to the persons who have to use the machine and carry out the routine maintenance operations; they must read the contents carefully more than once, in such a way as to clearly understand what are the correct operating conditions and the dangerous conditions that must be avoided.  
In case of loss or damage, request a new copy to Komatsu Utility or your Komatsu Utility Dealer.
- The illustrations contained in this manual may represent machine configurations available on request.  
Komatsu Utility machines are constantly improved in order to increase their efficiency and reliability; this manual sums up all the information regarding the most recent techniques applied at the moment in which the machine is marketed.  
For any further and/or updated information, contact your Komatsu Utility Dealer.
- Punctual periodic annotations regarding the maintenance operations that have been carried out are important to have a clear prospect of the situation and to know exactly what has been done and what has to be done after the next maintenance interval. Therefore, it is advisable to consult either the hour meter and the maintenance plan frequently.
- Over the years Komatsu Utility Dealers have gathered considerable experience in customer service.  
If more information is needed, do not hesitate to contact your Komatsu Utility Dealer: he always knows how to get the best performance from the machine, he can suggest the use of the equipment that is most suitable for specific needs and can provide the technical assistance necessary for any change that may be required to conform the machine to the safety standards and traffic rules.  
Furthermore, Komatsu Utility Dealers also ensure their assistance for the supply of Komatsu Utility genuine spare parts, which alone guarantee safety and interchangeability.
- The table included in this manual must be filled in with the machine data, which are the data that must always be indicated to the Dealer when requiring assistance and ordering spare parts.



### CAUTION

- **The incorrect use of the machine and inappropriate maintenance operations may cause serious injuries and even death.**
  - **Operators and maintenance personnel must carefully read this manual before using the machine or performing maintenance operations.**
  - **Any serious accident that may occur during the use of the machine or during maintenance operations is due to failure to comply with the instructions given herein.**
  - **The procedures and precautions described in this manual are valid for application to the machine only when it is used correctly.**  
**If the machine is used for any purpose or in any way other than those described herein, the operator shall be responsible for his own safety and for the safety of any other person involved.**
-

## 1.2 INFORMATION ON SAFETY

Many accidents are caused by insufficient knowledge of and failure to comply with the safety regulations prescribed for the maintenance operations that must be performed on the machine.

In order to avoid accidents, before starting work and before carrying out any maintenance operation, carefully read and be sure to understand all the information and warnings contained in this manual and given on the plates applied onto the machine, so that you can follow the instructions without making mistakes.

To identify the messages regarding safety that are included in this manual and written on the machine plates, the following words have been used.

### DANGER

- This word is used in the safety warnings in the manual and on the plates when the situation is dangerous and it may possibly result in serious injuries or even death. These messages describe the safety precautions to be taken in order to avoid any risk. Non-compliance with these instructions may also result in serious damage to the machine.
- 

### CAUTION

- This word is used in the safety warnings in the manual and on the plates to signal risks that may cause moderate damage or injuries. The message can be used even to indicate the risk of damage to the machine only.
- 

### IMPORTANT

- This word is used when precautions are indicated, which must be taken to avoid actions that may shorten the life of the machine.
- 

Komatsu Utility cannot reasonably predict every circumstance that might involve a potential hazard during the operation or maintenance of the machine; for this reason, the safety messages included in this manual and applied onto the machine may not include all possible safety precautions.

If all the procedures and operations prescribed for this machine are kept to, you can be sure that the operator and the persons in the vicinity can work in total safety, with no risk of damaging the machine. In case of doubt regarding the safety measures necessary for some procedures, contact Komatsu Utility or your local Dealer.

### DANGER

- Before starting any maintenance operation, position the machine on a firm and level surface, lower the equipment to the ground, engage the safety locks of either the equipment and the controls and stop the engine.
- 

### DANGER

- To make the information clearer, some illustrations in this manual represent the machine without safety guards. Do not use the machine without guards and do not start the engine when the engine protection casing is open, if this is not expressly prescribed for some specific maintenance operations.
-

 **DANGER**

- It is strictly forbidden to modify the setting of the hydraulic system safety valves; Komatsu Utility cannot be held liable for any damage to persons, property or the machine, if this has been tampered with by modifying the standard setting of the hydraulic system.
- 

 **DANGER**

- Before carrying out any electrical welding, disconnect the battery and the alternator (See "2.8.13 PRECAUTIONS CONCERNING THE BATTERY AND THE ALTERNATOR").
- 

 **DANGER**

- Install only authorized additional equipment (See "6.1 ATTACHMENTS AND OPTIONS - GENERAL INFORMATION").
-

## 1.3 INTRODUCTION

### 1.3.1 INTENDED USES

The Komatsu Utility MACHINES described in this manual have been designed and constructed to be used mainly for EXCAVATION and EARTH-MOVING OPERATIONS.

If provided with suitable safety devices, they can be used with authorized optional equipment having the characteristics illustrated at point "6. AUTHORIZED OPTIONAL EQUIPMENT".

### 1.3.2 IMPROPER OR UNAUTHORIZED USES

#### CAUTION

- This paragraph describes some of the improper or unauthorized uses of the machine; since it is impossible to predict all the possible improper uses, if the machine happens to be used for particular applications, contact your Komatsu Utility Dealer before carrying out the work.

#### IMPORTANT

- The instructions regarding the authorized optional equipment are given in the relevant operation and maintenance manuals; if the equipment is supplied by Komatsu Utility, these publications are enclosed to this manual.
- The instructions regarding the assembly of the authorized equipment, the controls requiring special arrangements on the machine and the hydraulic couplings necessary for the operation of the equipment are grouped in the final section of this manual.

Komatsu Utility MACHINES are constructed exclusively for the handling, excavation and treatment of inert materials; therefore, the following uses are absolutely forbidden:

- USE OF THE MACHINE BY MINORS OR INEXPERIENCED PERSONS.
- USE OF THE MACHINE FOR LIFTING PERSONS OR OBJECTS.
- TRANSPORT OF CONTAINERS WITH FLAMMABLE OR DANGEROUS FLUIDS.
- USE OF THE BUCKET FOR DRIVING OR EXTRACTING PILES.
- USE OF THE MACHINE FOR TOWING DAMAGED VEHICLES.

### 1.3.3 MAIN CHARACTERISTICS

- Simple and easy operation.
- Hydrostatic transmission obtained through two axial piston motors that operate epicyclic reduction gears.
- Rotation of the upper structure achieved by means of an axial piston hydraulic motor acting on an epicyclic reduction gear.
- Main equipment servolevers ensuring also combined movements that can be modulated proportionally and continually.
- Pedal controls for the boom swing and the optional equipment.
- Lever controls for travel and blade.
- Travel speed increase achieved through a pedal-operated push button.
- Complete series of instruments visible from the operating position.
- Lever accelerator.
- Easy maintenance with simplified intervals.

### 1.3.4 RUNNING-IN

Every machine is scrupulously adjusted and tested before delivery.

A new machine, however, must be used carefully for the first 100 hours, in order to ensure proper running-in of the various components.

If the machine is subjected to excessive work load at the beginning of operation, its potential yield and its functionality will be shortly and untimely reduced.

Every new machine must be used carefully, paying special attention to the following indications:

- After the start, let the engine idle for 5 minutes, in such a way as to warm it up gradually before actual operation.
- Avoid operating the machine with the limit loads allowed or at high speed.
- Avoid abrupt starts or accelerations, useless sudden decelerations and abrupt reversals.
- After the first 250 hours, carry out the following operations, in addition to those to be performed every 250 hours:
  - 1 - Change the oil in the travel reduction gears.
  - 2 - Check and adjust the engine valve clearance.

#### SYNTHETIC BIODEGRADABLE OIL TYPE HEES

On machines in which the synthetic biodegradable oil type HEES is used, the following operations are to be performed besides the standard maintenance operations:

- After the first 50 hours of operation, change the hydraulic circuit drain filter.
- After the first 500 hours of operation, change the hydraulic circuit oil.

#### IMPORTANT

- **When changing the oil filters (cartridges), check their inner part to make sure that there are no deposits. If considerable deposits are observed, find out what may have caused them before starting the machine.**
  - **The number of operating hours is indicated by the hour meter.**
-

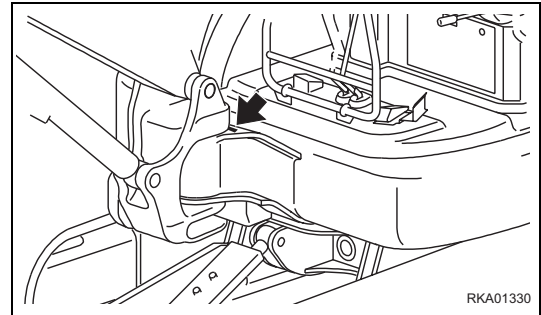
## 1.4 PRODUCT IDENTIFICATION

The Komatsu Utility EXCAVATOR and its main components are identified by serial numbers stamped on the identification plates.

The serial number and the identification numbers of the components are the only numbers that must be indicated to the Dealer when requiring assistance and ordering spare parts.

### 1.4.1 MACHINE SERIAL NUMBER

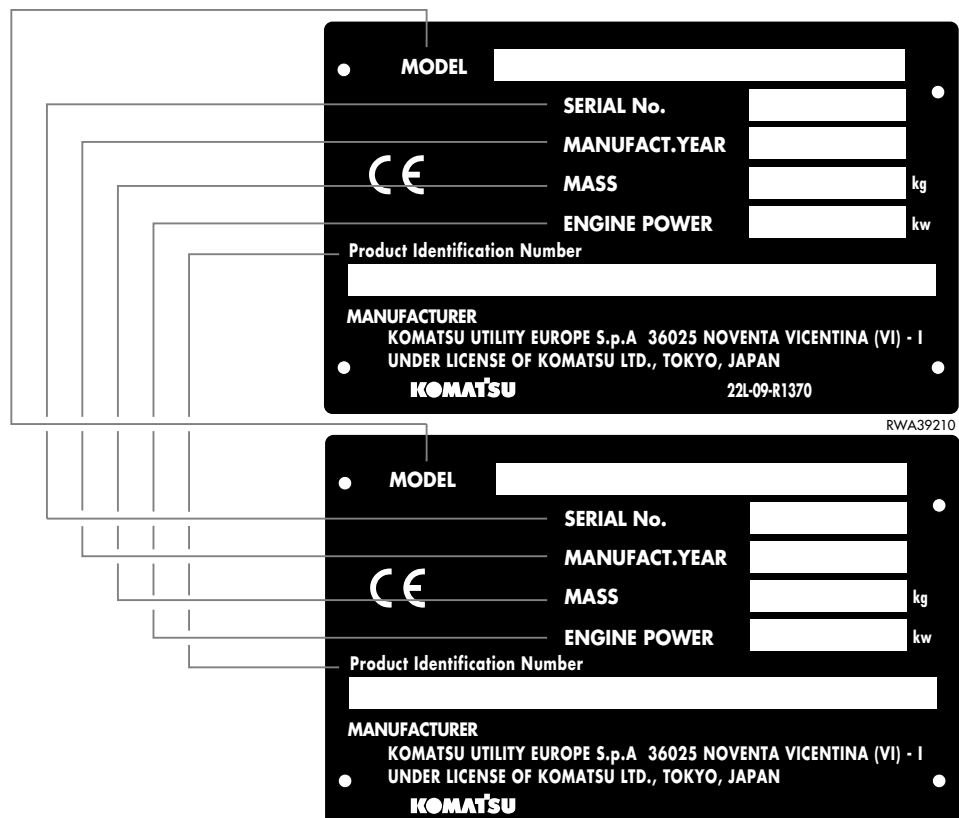
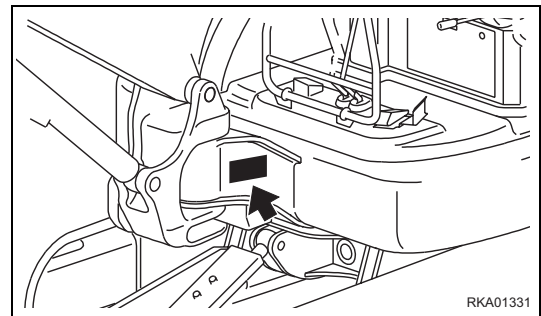
The machine serial number is stamped on the front upper part of the main frame, on the left side.



### 1.4.2 MACHINE IDENTIFICATION PLATE AND PRODUCT IDENTIFICATION NUMBER (PIN)

The Komatsu Utility EXCAVATORS described in the present manual are provided with the CE mark, which certifies that they are in compliance with the harmonized standards of the European Community.

The plate provided with the mark is applied onto the front wall of the main frame, on the left side.



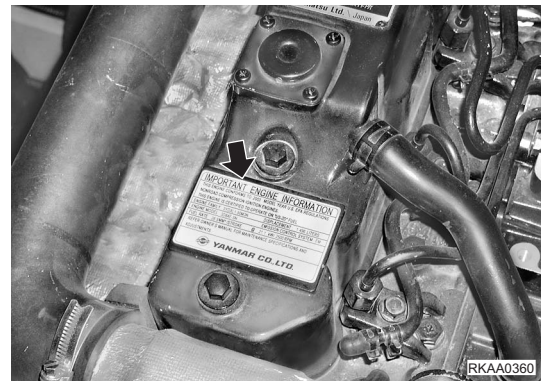


### 1.4.3 ENGINE SERIAL NUMBER AND EXHAUST GAS EMISSION PLATE

The serial number is stamped on the plate positioned on the upper side of the tappet cover.

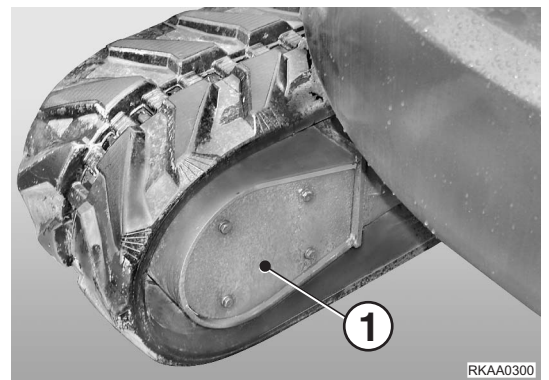


The exhaust gas emission plates are positioned on the upper side of the tappet cover and on the inner right side of the counterweight.



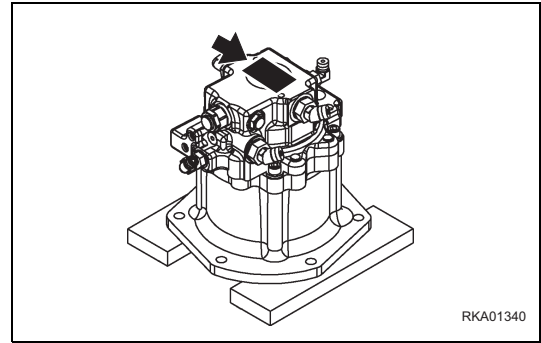
### 1.4.4 TRAVEL REDUCTION GEAR SERIAL NUMBER

The serial number is stamped on the plate positioned inside the travel reduction gear and can be seen after removing the cover (1).



### 1.4.5 SWING REDUCTION GEAR SERIAL NUMBER

The serial number is stamped on the plate positioned on the upper side of the swing motor.



### 1.4.6 CAB SERIAL NUMBER

The CAB serial number is stamped on the plate positioned on the top left side.





# TABLE OF CONTENTS

<b>1. FOREWORD</b>	
<b>1.1 FOREWORD</b> .....	<b>1</b>
<b>1.2 INFORMATION ON SAFETY</b> .....	<b>2</b>
<b>1.3 INTRODUCTION</b> .....	<b>4</b>
1.3.1 INTENDED USES.....	4
1.3.2 IMPROPER OR UNAUTHORIZED USES.....	4
1.3.3 MAIN CHARACTERISTICS.....	4
1.3.4 RUNNING-IN .....	5
<b>1.4 PRODUCT IDENTIFICATION</b> .....	<b>6</b>
1.4.1 MACHINE SERIAL NUMBER .....	6
1.4.2 MACHINE IDENTIFICATION PLATE AND PRODUCT IDENTIFICATION NUMBER (PIN) ...	6
1.4.3 ENGINE SERIAL NUMBER AND EXHAUST GAS EMISSION PLATE .....	7
1.4.4 TRAVEL REDUCTION GEAR SERIAL NUMBER .....	7
1.4.5 SWING REDUCTION GEAR SERIAL NUMBER .....	8
1.4.6 CAB SERIAL NUMBER .....	8
1.4.7 SERIAL NUMBERS AND DEALER'S ADDRESS .....	9
<b>TABLE OF CONTENTS</b> .....	<b>10</b>
<b>2. SAFETY AND ACCIDENT PREVENTION</b>	
<b>2.1 SAFETY, NOISE AND VIBRATION PLATES</b> .....	<b>18</b>
2.1.1 POSITION OF THE SAFETY PLATES.....	18
2.1.2 PICTOGRAMS AND RELEVANT MEANINGS.....	19
2.1.3 POSITION OF THE NOISE PLATES ON MACHINES WITH CAB .....	24
2.1.4 POSITION OF THE NOISE PLATES ON MACHINES WITH CANOPY .....	25
2.1.5 VIBRATIONS TO WHICH THE OPERATOR IS SUBJECTED.....	25
<b>2.2 GENERAL PRECAUTIONS</b> .....	<b>26</b>
2.2.1 GENERAL SAFETY RULES.....	26
2.2.2 SAFETY DEVICES AND GUARDS .....	26
2.2.3 CLOTHING AND PERSONAL PROTECTION ITEMS .....	26
2.2.4 UNAUTHORIZED MODIFICATIONS.....	27
2.2.5 LEAVING THE OPERATOR'S SEAT .....	27
2.2.6 GETTING ON AND OFF THE MACHINE.....	28
2.2.7 PREVENTING FIRES DUE TO FUEL AND OIL .....	28
2.2.8 PREVENTING BURNS .....	29
2.2.9 PREVENTING DAMAGE DUE TO ASBESTOS POWDER .....	29
2.2.10 PREVENTING DAMAGE CAUSED BY THE WORK EQUIPMENT .....	29
2.2.11 FIRE EXTINGUISHERS AND FIRST AID KIT .....	30
2.2.12 PRECAUTIONS CONCERNING THE CAB STRUCTURE .....	30
2.2.13 PRECAUTIONS CONCERNING THE EQUIPMENT.....	30
<b>2.3 PRECAUTIONS TO BE TAKEN BEFORE STARTING THE ENGINE</b> .....	<b>31</b>
2.3.1 SAFETY ON THE WORK SITE .....	31
2.3.2 FIRE PREVENTION .....	31
2.3.3 PRECAUTIONS TO BE TAKEN FOR THE OPERATOR'S CAB.....	31
2.3.4 ROOM VENTILATION .....	32
2.3.5 PRECAUTIONS TO BE TAKEN FOR THE LIGHTS .....	32
2.3.6 CLEANING THE WINDOWS - CHECKING THE WINDSHIELD WIPER BLADES.....	32

<b>2.4</b>	<b>PRECAUTIONS TO BE TAKEN WHEN WORKING.....</b>	<b>33</b>
2.4.1	STARTING THE ENGINE .....	33
2.4.2	CHECK THE DIRECTION BEFORE STARTING THE MACHINE .....	33
2.4.3	CHECKS FOR TRAVELLING IN REVERSE .....	34
2.4.4	MOVING THE MACHINE .....	34
2.4.5	MOVING ON SLOPES .....	35
2.4.6	WORKING ON SLOPES .....	36
2.4.7	UNAUTHORIZED OPERATIONS .....	36
2.4.8	PREVENTING ELECTROCUTION .....	38
2.4.9	VISIBILITY.....	38
2.4.10	WORKING ON ICY OR SNOW-COVERED SURFACES .....	38
2.4.11	PREVENTING DAMAGE CAUSED BY THE WORK EQUIPMENT .....	39
2.4.12	WORKING ON LOOSE GROUND .....	39
2.4.13	PARKING THE MACHINE .....	39
<b>2.5</b>	<b>TRANSPORTING THE MACHINE ON MOTOR VEHICLES .....</b>	<b>40</b>
2.5.1	LOADING AND UNLOADING .....	40
2.5.2	TRANSPORT .....	40
<b>2.6</b>	<b>BATTERY .....</b>	<b>41</b>
2.6.1	PREVENTING RISKS THAT MAY BE DUE TO THE BATTERY .....	41
2.6.2	STARTING WITH BOOSTER CABLES .....	41
<b>2.7</b>	<b>PRECAUTIONS FOR THE REMOVAL .....</b>	<b>42</b>
<b>2.8</b>	<b>PRECAUTIONS FOR MAINTENANCE.....</b>	<b>43</b>
2.8.1	WARNING PLATES .....	43
2.8.2	TOOLS .....	43
2.8.3	PERSONNEL .....	43
2.8.4	EQUIPMENT .....	44
2.8.5	WORKING UNDER THE MACHINE .....	44
2.8.6	CLEANING THE MACHINE .....	44
2.8.7	USE OF THE ENGINE DURING MAINTENANCE OPERATIONS .....	45
2.8.8	PERIODICAL CHANGE OF THE PARTS THAT ARE CRITICAL FOR SAFETY.....	45
2.8.9	STOP THE ENGINE BEFORE CARRYING OUT ANY MAINTENANCE OPERATION OR INSPECTION .....	45
2.8.10	RULES TO BE FOLLOWED DURING FUEL OR OIL TOPPING UP .....	46
2.8.11	CHECKING THE COOLANT LEVEL IN THE RADIATOR .....	46
2.8.12	USING LAMPS .....	46
2.8.13	PRECAUTIONS CONCERNING THE BATTERY AND THE ALTERNATOR .....	47
2.8.14	PRECAUTIONS CONCERNING THE STARTER .....	47
2.8.15	HANDLING HIGH-PRESSURE PIPES .....	47
2.8.16	PRECAUTIONS TO BE TAKEN WHEN HANDLING HIGH-PRESSURE OIL .....	48
2.8.17	PRECAUTIONS FOR MAINTENANCE OPERATIONS AT HIGH TEMPERATURES AND HIGH PRESSURE .....	48
2.8.18	COOLING FAN AND BELT .....	48
2.8.19	WASTE MATERIALS .....	49
2.8.20	PRECAUTIONS FOR THE USE OF THE synthetic biodegradable oil type HEES .....	49
<b>3.</b>	<b>THE MACHINE AND ITS OPERATIONS</b>	
<b>3.1</b>	<b>MACHINE VIEW ILLUSTRATIONS .....</b>	<b>52</b>
3.1.1	OVERALL MACHINE VIEW .....	52
3.1.2	CONTROLS AND GAUGES.....	53
<b>3.2</b>	<b>DETAILED CONTROLS AND GAUGES .....</b>	<b>54</b>

3.2.1	MONITORING SYSTEM.....	54
3.2.1.1	EMERGENCY MONITORS.....	55
3.2.1.2	METER DISPLAY PORTION.....	57
3.2.1.3	PILOT LAMPS.....	59
3.2.1.4	MONITOR SWITCHES PORTION.....	60
3.2.2	SWITCHES.....	62
3.2.3	CONTROL LEVERS AND PEDALS.....	65
3.2.4	WINDSHIELD (Machines equipped with cab).....	71
3.2.5	SLIDING DOOR (Machines equipped with cab).....	75
3.2.6	SLIDING WINDOW (Machines equipped with cab).....	75
3.2.7	EMERGENCY ESCAPE HAMMER (Machines equipped with cab).....	76
3.2.8	COVER WITH LOCK.....	77
3.2.9	ENGINE REAR COVER.....	78
3.2.10	COOLING COVER.....	79
3.2.11	MUD COVER.....	80
3.2.12	METHOD OF OPENING (TILTING) FLOOR.....	81
3.2.13	FUSE.....	86
3.2.14	BLOCK FUSE.....	86
3.2.15	OPERATION MANUAL STORAGE.....	87
3.2.16	TOOL BOX.....	87
3.2.17	GREASE GUN HOLDER.....	87
3.2.18	ASHTRAY (Machines equipped with cab).....	87
<b>3.3</b>	<b>MACHINE OPERATIONS AND CONTROLS.....</b>	<b>88</b>
3.3.1	BEFORE STARTING ENGINE.....	88
3.3.1.1	WALK-AROUND CHECKS.....	88
3.3.1.2	CHECKS BEFORE STARTING.....	90
3.3.1.3	ADJUSTMENT.....	96
3.3.1.4	OPERATIONS BEFORE STARTING ENGINE.....	99
3.3.1.5	STARTING ENGINE.....	101
3.3.2	AFTER STARTING ENGINE.....	104
3.3.2.1	BREAKING-IN THE NEW MACHINE.....	104
3.3.2.2	WARMING-UP OPERATION.....	104
3.3.3	STOPPING THE ENGINE.....	106
3.3.4	MACHINE OPERATION.....	107
3.3.4.1	PREPARATIONS FOR MOVING THE MACHINE OFF.....	107
3.3.4.2	MOVING MACHINE FORWARD.....	107
3.3.4.3	MOVING MACHINE BACKWARD.....	109
3.3.4.4	STOPPING MACHINE.....	110
3.3.5	STEERING THE MACHINE.....	111
3.3.5.1	STEERING.....	111
3.3.6	SWINGING.....	113
3.3.7	WORK EQUIPMENT CONTROLS AND OPERATIONS.....	114
3.3.8	PROHIBITED OPERATIONS.....	116
3.3.9	GENERAL OPERATION INFORMATION.....	118
3.3.10	TRAVELING ON SLOPES.....	120
3.3.11	ESCAPE FROM MUD.....	122
3.3.12	WORK POSSIBLE USING COMPACT HYDRAULIC EXCAVATOR.....	123
3.3.13	CHANGING THE BUCKET.....	125
3.3.14	PARKING MACHINE.....	126
3.3.15	CHECK AFTER SHUT OFF ENGINE.....	127
3.3.16	MACHINE INSPECTION AFTER DAILY WORK.....	127
3.3.17	LOCKING.....	127
3.3.18	RUBBER SHOES AND ROAD LINERS (Machine equipped with rubber shoe or road liner)...	128
3.3.18.1	RUBBER SHOES AND ROAD LINERS INFORMATION.....	128

3.3.18.2	WARRANTY FOR RUBBER SHOES AND ROAD LINERS.....	128
3.3.18.3	USING RUBBER SHOES AND ROAD LINERS .....	128
<b>3.4</b>	<b>TRANSPORTATION .....</b>	<b>132</b>
3.4.1	TRANSPORTATION PROCEDURE .....	132
3.4.2	LOADING AND UNLOADING WITH TRAILER .....	132
3.4.3	LIFTING MACHINE .....	138
<b>3.5</b>	<b>COLD WEATHER OPERATION .....</b>	<b>140</b>
3.5.1	COLD WEATHER OPERATION INFORMATION .....	140
3.5.1.1	FUEL AND LUBRICANTS.....	140
3.5.1.2	COOLING SYSTEM COOLANT.....	140
3.5.1.3	BATTERY.....	141
3.5.2	CAB HEATER IN COLD WEATHER (Machines equipped with cab) .....	141
3.5.3	AFTER DAILY WORK COMPLETION .....	142
3.5.4	AFTER COLD WEATHER SEASON.....	142
<b>3.6</b>	<b>LONG TERM STORAGE.....</b>	<b>143</b>
3.6.1	BEFORE STORAGE .....	143
3.6.2	DURING STORAGE.....	143
3.6.3	AFTER STORAGE .....	143
<b>3.7</b>	<b>TROUBLES AND ACTIONS .....</b>	<b>144</b>
3.7.1	RUNNING OUT OF FUEL.....	144
3.7.2	PHENOMENA THAT ARE NOT FAILURES .....	144
3.7.3	TOWING THE MACHINE .....	144
3.7.4	SEVERE JOB CONDITION.....	145
3.7.5	DISCHARGED BATTERY .....	145
3.7.5.1	BATTERY REMOVAL AND INSTALLATION.....	146
3.7.5.2	BATTERY CHARGES.....	146
3.7.5.3	STARTING ENGINE WITH BOOSTER CABLES .....	147
3.7.6	OTHER TROUBLE .....	149
3.7.6.1	ELECTRICAL SYSTEM .....	149
3.7.6.2	CHASSIS .....	150
3.7.6.3	ENGINE .....	150
<b>4.</b>	<b>MAINTENANCE</b>	
<b>4.1</b>	<b>MAINTENANCE INFORMATION .....</b>	<b>154</b>
<b>4.2</b>	<b>LUBRICANTS, COOLANT AND FILTERS.....</b>	<b>157</b>
4.2.1	HANDLING OIL, FUEL, COOLANT, AND PERFORMING OIL CLINIC .....	157
4.2.1.1	OIL .....	157
4.2.1.2	FUEL .....	157
4.2.1.3	COOLING SYSTEM COOLANT.....	158
4.2.1.4	GREASE .....	158
4.2.1.5	CARRYING OUT KOWA (KOMATSU OIL WEAR ANALYSIS) .....	159
4.2.1.6	OIL AND FUEL STORAGE .....	160
4.2.1.7	FILTERS .....	160
4.2.2	ELECTRIC SYSTEM MAINTENANCE.....	161
4.2.3	HANDLING HYDRAULIC SYSTEM .....	161
<b>4.3</b>	<b>WEAR PARTS.....</b>	<b>162</b>
4.3.1	WEAR PARTS LIST .....	162
<b>4.4</b>	<b>LUBRICANTS, FUEL AND COOLANT SPECIFICATIONS .....</b>	<b>163</b>
4.4.1	HOMOLOGATED HEES SYNTHETIC BIODEGRADABLE LUBRICANTS.....	167
<b>4.5</b>	<b>TIGHTENING TORQUE SPECIFICATIONS .....</b>	<b>168</b>
4.5.1	TIGHTENING TORQUE LIST .....	168

<b>4.6</b>	<b>LUBRICATION</b> .....	<b>169</b>
4.6.1	LUBRICATION DIAGRAM .....	169
<b>4.7</b>	<b>SAFETY CRITICAL PARTS</b> .....	<b>170</b>
4.7.1	SAFETY CRITICAL PARTS LIST .....	170
<b>4.8</b>	<b>MAINTENANCE SCHEDULE</b> .....	<b>171</b>
4.8.1	MAINTENANCE SCHEDULE CHART .....	171
4.8.2	MAINTENANCE INTERVAL FOR HYDRAULIC BREAKER .....	172
<b>4.9</b>	<b>MAINTENANCE PROCEDURE</b> .....	<b>173</b>
4.9.1	WHEN REQUIRED .....	173
4.9.1.a	CHECK, CLEAN AND REPLACE AIR CLEANER ELEMENT .....	173
4.9.1.b	CLEAN INSIDE OF COOLING SYSTEM .....	175
4.9.1.c	CHECK LEVEL OF BATTERY ELECTROLYTE .....	177
4.9.1.d	CLEAN WATER SEPARATOR ELEMENT .....	179
4.9.1.e	DRAIN WATER AND SEDIMENT FROM FUEL TANK .....	179
4.9.1.f	CHECK AND TIGHTEN TRACK SHOE BOLTS (Machine equipped with road liner, steel shoe) .....	180
4.9.1.g	CHECK AND ADJUST TRACK TENSION (Machine equipped with road liner, steel shoe) .....	180
4.9.1.h	CHECK, RUBBER SHOES OR ROAD LINERS (Machine equipped with rubber shoes, road liner) .....	182
4.9.1.i	CHECK AND ADJUST RUBBER SHOE TENSION (Machine equipped with rubber shoes) .....	184
4.9.1.j	REPLACE RUBBER SHOES (Machine equipped with rubber shoes) .....	186
4.9.1.k	REPLACE ROAD LINERS (Machine equipped with road liner) .....	188
4.9.1.l	CHECK WINDOW WASHER FLUID LEVEL, ADD FLUID (Machine equipped with cab) .....	188
4.9.1.m	CHECK, CLEAN AND LUBRICATE CAB SLIDE DOOR RAIL AND ROLLER (Machine equipped with cab) .....	189
4.9.1.n	LUBRICATING .....	189
4.9.1.o	BLEEDING AIR FROM HYDRAULIC SYSTEM .....	190
4.9.2	CHECK BEFORE STARTING .....	191
4.9.3	EVERY 500 HOURS MAINTENANCE .....	192
4.9.3.a	LUBRICATING .....	192
4.9.3.b	CHANGE OIL IN ENGINE OIL PAN, REPLACE ENGINE OIL FILTER CARTRIDGE...	194
4.9.3.c	REPLACE FUEL FILTER CARTRIDGE .....	195
4.9.3.d	CHECK OIL LEVEL IN FINAL DRIVE CASE, ADD OIL .....	196
4.9.3.e	CLEAN AND INSPECT RADIATOR FINS AND OIL COOLER FINS .....	196
4.9.3.f	CHECK AND ADJUST COOLING FAN BELT TENSION .....	197
4.9.4	EVERY 1000 HOURS MAINTENANCE .....	198
4.9.4.a	REPLACE HYDRAULIC OIL FILTER ELEMENT .....	198
4.9.4.b	CHANGE OIL IN FINAL DRIVE CASE .....	200
4.9.4.c	CHECK ENGINE VALVE CLEARANCE, ADJUST .....	200
4.9.5	EVERY 2000 HOURS MAINTENANCE .....	201
4.9.5.a	CHANGE OIL IN HYDRAULIC TANK, CLEAN STRAINER .....	201
4.9.5.b	CHECK ALTERNATOR, STARTING MOTOR .....	202
<b>5.</b>	<b>TECHNICAL SPECIFICATIONS</b>	
<b>5.1</b>	<b>SPECIFICATIONS</b> .....	<b>204</b>
<b>5.2</b>	<b>LIFTING CAPACITIES</b> .....	<b>206</b>
5.2.1	LIFTING CAPACITIES PC30MR-2 (WITH CANOPY) .....	206
5.2.2	LIFTING CAPACITIES PC30MR-2 (WITH CABIN) .....	209
5.2.3	LIFTING CAPACITIES PC35MR-2 (WITH CANOPY) .....	212
5.2.4	LIFTING CAPACITIES PC35MR-2 (WITH CABIN) .....	215



<b>6.</b>	<b>AUTHORIZED OPTIONAL EQUIPMENT</b>	
<b>6.1</b>	<b>ATTACHMENTS AND OPTIONS - GENERAL INFORMATION</b>	<b>220</b>
6.1.1	SAFETY FIRST	220
6.1.2	ATTACHMENT INSTALLATION	221
6.1.3	CHARACTERISTICS OF THE OPTIONAL EQUIPMENT	222
6.1.3.1	FOR MODEL PC30MR-2 ONLY	222
6.1.3.2	FOR MODEL PC35MR-2 ONLY	222
<b>6.2</b>	<b>MACHINE READY FOR ATTACHMENT</b>	<b>223</b>
6.2.1	LOCATIONS	223
6.2.2	HYDRAULIC CIRCUIT	225
6.2.2.1	ASSEMBLYING AND CONNECTING THE EQUIPMENT	225
6.2.2.2	MAINTENANCE	226
6.2.2.3	BLEEDING AIR	226
<b>6.3</b>	<b>ATTACHMENT OPERATIONS</b>	<b>227</b>
6.3.1	LONG TERM STORAGE	228
6.3.2	SPECIFICATIONS	228
<b>6.4</b>	<b>ATTACHMENT GUIDE</b>	<b>229</b>
6.4.1	ATTACHMENT COMBINATIONS	229
<b>6.5</b>	<b>RECOMMENDED ATTACHMENT OPERATIONS</b>	<b>230</b>
6.5.1	HYDRAULIC BREAKER	230

**PAGE INTENTIONALLY LEFT BLANK**

# **SAFETY AND ACCIDENT PREVENTION**

