

零件目录

PARTS BOOK

PC200, 200LC-7 GALEO

PC210, 210LC-7 GALEO

HYDRAULIC EXCAVATOR

液压挖掘机（含发动机）

系列号: PC200-7: DBB0001-
PC200LC-7: DBE0001- 及以上
PC210-7: DBF0001-
PC210LC-7: DBG0001-

KOMATSU

FOREWORD

When ordering a spare part, specify the part number, part name, and quantity required, and also specify your machine model code, machine serial number, engine serial number and the service meter reading.

This Parts Book describes not only standard items but also optional equipment and attachments. To order a part, please contact your nearest Komatsu distributor.

This Parts Book contains the information and special symbols as follows:

Figure and list	When you open this Parts Book, you will find an illustration on the left page (even-numbered page) for the spare parts group. Each individual part in the group is given an index number. On the right page, the component parts of the group are listed in the order of the index numbers shown on the illustration page. The part number, part name, and applicable machine serial number are given for each part.
FIG. No.	The FIG. No. is the number of the illustration shown on the page. It is not the spare part number. The numbers are not always continuous.
INDEX	This is the same as the index number in the illustration. The parts are listed in index number order.
PART No.	The number given in the PART No. column is the part number for the part shown. It is the code used when ordering that part. It is important that there be no mistake in this code number when ordering.
DESCRIP- TION	This gives the name of part that has the part number listed. The mark "." is put in front of the part name of an assembly part and the item is entered following the assembly. If a part marked with "." is a sub assembly, its components are marked with "..". Example: ELEMENT ASSEMBLY, AIR CLEANER .ELEMENT ASSEMBLY, OUTER ..ELEMENT, OUTER ..NUT, WING ..WASHER
Q'TY (Quantity)	This specifies the number of pieces used for one machine. However, if a part is included in the assembly and/or component, the quantity per such assembly and/or component is specified.
SERIAL No.	Applicable engine serial number is indicated for the engine volume. In the chassis volume, this indicates the machine serial number in which the part is used.
Symbols and codes	Symbols and codes are used in the PART No. and DESCRIPTION columns, and represent the following: <input type="checkbox"/> The part specified in the line above can be used instead of this part.

Symbols
and codes
(Cont'd)

- ◻ This part can be used instead of the part specified in the line immediately above.
- ◆ This part and the part specified in the line immediately above are interchangeable.
- The part specified in the DESCRIPTION column can be used instead of this part if it is used as a set.
- ⊠ This shows discontinued part. The part specified in the above line is supplied instead.
- ▼ This shows a discontinued part. The part specified in the DESCRIPTION column is supplied instead as a set.
- ☆ This part cannot be supplied as an individual part. It is supplied as an assembly.
- ★ This part cannot be supplied as an individual part. It is supplied as an assembly. However, it is supplied as an individual part by authorized distributors only.
- ⊙ This indicates a part group. The part marked with this symbol is not considered a supply part.
- ==== The parts surrounded by this line are components of the part group specified in the above line.
- G-1,G-2 These indicate categories of part groups.
- KIT This indicates kit parts. For kit parts, refer to the service kit tables provided in this Parts Book.
- △ This indicates a part supplied as semi-finished. It requires additional work before installation.
- PAINT(1) This indicates parts shipped painted with undercoat.
- PAINT(2) This indicates parts supplied with different colors from the original color of your machine.
- (A) This code indicates special parts for cold weather "A" specification (-30°C) machines.
- (B) This indicates special parts for cold weather "B" specification (-50°C) machines.

前 言

订购零件时，请注明需要零件的货号、品名、数量以及使用机器的车辆编号、发动机型号和系列号、工作时数。

此零件明细表上不仅记载有标准装备零件，还记载有选购零件、附件零件。如果您需要订货，请与最近的小松代理店联系。

为了清楚了，零件手册中有如下规定：

图 表	打开此零件清单后，在左侧的页上（偶数页）用图示表示按安装的装置上的零件。在图示上标有各种零件的索引号码。 在右侧的页上（奇数页）按照左侧图示上表示的零件索引号码以表格的形式表示货号、品名、数量、适用机型。
FIG. No.	图号（FIG.）表示该页图的号码，它不时补充零件用的货号，同时，此号码不一定是连续号码。
INDEX	与图的索引号码一致，按索引号码顺序编制为表格形式。
PART No.	此栏所示的货号是图示零件的货号，它是在订货时需要的标明的特定代号，是非常重要的。
DESCRIPTOIN	它表示相当于货号的零件名称。 构成组装品的零件，在品名的前面有标记，记载在组装品之后。 另外，如果标记的零件是组装品，在该构成零件的品名前标有..标记。 例如：ELEMENT ASSEMBLY, AIR CLEANER .ELEMENT ASSEMBLY, OUTER ..ELEMENT, OUTER ..NUT, WING ..WASHER
Q'TY	表示 1 台机器中需要使用的该零件数量。 但是，如果是组装零件和零件组的构成零件时，表示其组装件的件数。
SERIAL No.	发动机篇中表示该使用零件的发动机型号，在机体篇中表示该使用零件的车辆号码。
代 号	货号栏和零件品名栏里的代号如下所示： □ 上一行的零件可取代此行零件来使用。

代 号

(续)

- 此行零件可代替紧接着的上一行零件使用。
- ◆ 此行零件可与紧挨着的上一行零件互换使用。
- 如果将此行零件说明栏内的零件配套后，可取代此零件来使用。
- ☒ 该行零件已停止供应，用上一行的零件代替使用。
- ▼ 此行零件已停止供应，将此行零件说明栏内的零件配套后代替此零件供应。
- ☆ 此行零件拟成套供应，不以单一零件供应。
- ★ 此行零件拟成套供应，不以单一零件供应，但特定代理除外。
- ⊙ 成组零件，一般不考虑成组供应。
- ==== 用这种符号包括的零件是符号上一行指明成组件的零部件。
- G-1, G-2 成组零件编号。
- KIT 修理包，关于修理包构件详情，请参考技术服务修理包资料。
- △ 此行零件以半成品的形式供应，使用前必须再加工。
- PAINT (1) 只涂底漆装船。
- PAINT (2) 和本体不同颜色装船。
 - (A) 适用寒冷地区。(-30°C)
 - (B) 适用极寒冷地区。(-50°C)

目录 CONTENTS

前言 FOREWORD	OF-	2	油底壳和吸油管	OIL PAN AND SUCTION	A2119-01A1	AA- 56
目录 CONTENTS	OC-	1	油尺	OIL LEVEL GAUGE	A219P-01A0	AA- 58
AA [发动机] [ENGINE]	FIG NO.	PAGE	转速传感器	REVOLUTION SENSOR	A221V-01A0	AA- 60
气缸盖	CYLINDER HEAD	A1009-01A0	飞轮壳	FLYWHEEL HOUSING	A2219-01A0	AA- 62
水温传感器	WATER TEMPERATURE SENSOR	A101V-10A1	飞轮	FLYWHEEL	A223P-01A0	AA- 64
后吊钩	REAR HANGER	A105P-01A0	曲轴	CRANKSHAFT	A2319-01A0	AA- 66
气缸盖罩	HEAD COVER	A111P-01A0	减震器	DAMPER	A233P-01A0	AA- 68
空气连接器	AIR CONNECTOR	A131P-01A1	活塞	PISTON	A2359-01A0	AA- 70
进气加热器	AIR INTAKE HEATER	A131R-01A0	摇臂	ROCKER ARM	A241P-01A0	AA- 72
进气盖	AIR INLET COVER	A131V-01A0	挺柱	TAPPET	A241R-01A0	AA- 74
排气连接器卡箍	EXHAUST CONNECTOR CLAMP	A151R-01A0	凸轮轴	CAMSHAFT	A2419-01A0	AA- 76
排气歧管密封垫和螺栓	EXHAUST MANIFOLD GASKET AND BOLT	A151T-01A0	前齿轮传动系统盖	FRONT GEAR TRAIN COVER	A261P-01A0	AA- 78
排气歧管和塞	EXHAUST MANIFOLD AND PLUG	A151V-01A0	附件皮带轮	ACCESSORY PULLEY	A267P-01A1	AA- 80
涡轮增压器机油管	TURBOCHARGER OIL PIPING	A153T-01A1	转速表传动盖	TACHOMETER DRIVE COVER	A281P-01A0	AA- 82
涡轮增压器外连接器	TURBOCHARGER OUT CONNECTION	A153V-01A0	底板	UNDER PLATE	A283P-01A0	AA- 84
涡轮增压器安装件	TURBOCHARGER MOUNTING	A1539-01A0	吸音盘气缸体	NOISE PANEL CYLINDER BLOCK	A283V-01A0	AA- 86
热屏蔽	HEAT SHIELD	A1570-01A3	机油泵	OIL PUMP	A301P-01A0	AA- 88
消声器及安装件	MUFFLER AND MOUNTING	A1610-01A0	机油滤芯和管路	OIL FILTER AND PIPING	A311P-01A1	AA- 90
节温器壳体	THERMOSTAT HOUSING	A173P-01A0	机油冷却器盖	OIL COOLER COVER	A331P-01A1	AA- 92
节温器	THERMOSTAT	A173R-01A1	喷油泵	FUEL INJECTION PUMP	A401P-01A0	AA- 94
机油压力开关	OIL PRESSURE SWITCH	A201V-01A0	增压管	BOOST TUBE	A401R-01A0	AA- 96
气缸体	CYLINDER BLOCK	A2019-01A0	吸音盘喷射泵	NOISE PANEL INJECTION PUMP	A401V-01A0	AA- 98
前盖指示器	FRONT COVER POINTER	A2040-01A0	燃油软管接头	FUEL HOSE JOINT	A4010-01A0	AA- 100
前盖	FRONT COVER	A2049-01A0	喷油泵安装件	FUEL INJECTION PUMP MOUNTING	A408P-01A0	AA- 102
凸轮随动件盖	CAM FOLLOWER COVER	A206P-01A0	燃油滤芯	FUEL FILTER	A411P-01A1	AA- 104
通风装置软管	BREATHER HOSE	A2060-01A1	燃油滤芯管路	FUEL FILTER PIPING	A411R-01A1	AA- 106
气缸体盲堵	CYLINDER BLOCK BLIND PLUG	A207P-01A0	喷油管路	FUEL INJECTION PIPING	A411S-01A0	AA- 108
油底壳螺栓	OIL PAN BOLT	A211R-01A0	气缸体盲盖和燃油滤芯管路	CYLINDER BLOCK BLIND COVER AND FUEL FILTER PIPING	A417P-01A1	AA- 110
机油油位传感器	OIL LEVEL SENSOR	A211V-01A1	喷嘴	INJECTION NOZZLE	A4219-01A0	AA- 112

	FIG NO.	PAGE		FIG NO.	PAGE
燃油接头..... FUEL JOINT	A423V-01A0	AA- 114	发动机座 (支架和缓冲垫)	ENGINE MOUNT(BRACKET AND CUSHION)	B0100-01A0 BO- 4
水泵..... WATER PUMP	A501P-01A0	AA- 116	发动机座 (滤清器远程安装)	ENGINE MOUNT(FILTER REMOTE)	B0100-02A0 BO- 6
水接头..... WATER CONNECTOR	A501R-01A0	AA- 118	空气滤清器连接装置.....	AIR CLEANER CONNECTION	B0200-01A0 BO- 8
水接头塞..... WATER CONNECTOR PLUG	A501S-01A0	AA- 120	燃油控制装置.....	FUEL CONTROL	B0400-01A0 BO- 10
水泵 (主皮带轮)	WATER PUMP (HAEDENING PULLEY)	A5019-01A0	水防腐蚀器.....	CORROSION ASS'Y	B0920-01A0 BO- 12
交流发电机驱动皮带轮.....	ALTERNATOR DRIVE PULLEY	A502P-01A2	CO [冷却系统] [COOLING SYSTEM]		
冷却风扇..... COOLING FAN	A5030-01A0	AA- 126	冷却装置 (散热器) (带空调器)	COOLING (RADIATOR)	
风扇隔套..... FAN SPACER	A504P-01A0	AA- 128	(WITH AIR CONDITIONER)	C0100-01A0A CO- 2	
交流发电机 (35A)	ALTERNATOR (35A)	A601P-01A0	冷却装置 (中冷器和冷凝器) (带空调器)	COOLING	
交流发电机 (60A)	ALTERNATOR (60A)	A601P-01A1	(AFTER COOLER AND CONDENSER) (WITH AIR CONDITIONER)	C0100-02A0 CO- 4	
交流发电机 (35A) (内部零件)	ALTERNATOR (35A) (INNER PARTS)	A601P-02A0	冷却装置 (管子、副箱和散热器安装支架)	COOLING	
交流发电机 (60A) (内部零件)	ALTERNATOR (60A) (INNER PARTS)	A601P-02A1	(PIPING, SUB TANK AND RADIATOR MOUNT)	C0100-03A0 CO- 6	
皮带张紧装置.....	BELT TENSIONER	A601S-01A2	冷却装置 (中冷器管路)	COOLING (AFTER COOLER PIPING)	C0100-04A0 CO- 8
交流发电机安装件.....	ALTERNATOR MOUNTING	A601T-01A0	风扇挡板 (带空调器)	FAN GUARD (WITH AIR CONDITIONER)	C0310-01A0 CO- 10
起动马达 (4.5KW)	STARTING MOTOR (4.5KW)	A621P-01A0	风扇挡板.....	FAN GUARD	C0310-01A1 CO- 12
起动马达 (5.5KW)	STARTING MOTOR (5.5KW)	A621P-01A1			
起动马达 (4.5KW) (内部零件)	STARTING MOTOR (4.5KW) (INNER PARTS)	A621P-02A0	DO [燃油箱和相关零件] [FUEL TANK AND RELATED PARTS]		
起动马达 (5.5KW) (内部零件).....	STARTING MOTOR (5.5KW) (INNER PARTS)	A621P-02A1	燃油箱.....	FUEL TANK	D0100-01A0 DO- 2
起动马达安装件 (4.5KW)	STARTING MOTOR PIPING (4.5KW)	A621S-01A0	燃油管路.....	FUEL LINES	D0200-01A0 DO- 4
起动马达安装件 (5.5KW)	STARTING MOTOR PIPING (5.5KW)	A621S-01A1	燃油管路 (油水分离器+附加燃油滤清器)	FUEL LINES	
维修零件 (1/4) (气缸盖)	REPAIR PARTS (1/4) (CYLINDER HEAD)	A8110-01A0	(WATER SEPARATOR+FULE FILTER)	D0200-02A0 DO- 6	
维修零件 (2/4) (气缸盖)	REPAIR PARTS (2/4) (CYLINDER HEAD)	A8110-02A0			
维修零件 (3/4) (曲轴)	REPAIR PARTS (3/4) (CRANKSHAFT)	A8110-03A0	EO [电气系统] [ELECTRICAL SYSTEM]		
维修零件 (4/4) (活塞)	REPAIR PARTS (4/4) (PISTON)	A8110-04A0	蓄电池 (大容量) (NX300)	BATTERY (LARGE CAPACITY) (NX300)	E0100-01A1 EO- 4
警告标牌 (日文-英文)	CAUTION PLATE (JAPANESE-ENGLISH)	A9810-01A0	电线 (起动用线束)	WRING(STARTING HARNESS)	E0200-01A0 EO- 6
警告标牌 (用于 EPA 的调整)	CAUTION PLATE		电线 (主线束) (线束和夹子)	WRING (MAIN HARNESS) (HARNESS AND CLIP)	E0200-02A0 EO- 8
(FOR REGULATION OF EPA)	A9850-01A1Z	AA- 168	电线 (主线束) (线夹) (1/2)	WRING (MAIN HARNESS) (CLIP)	E0200-03A0 EO- 12
主泵连接零件.....	MAIN PUMP CONNECTING	A9999-01A1	电线 (主线束) (线夹) (2/2)	WRING (MAIN HARNESS) (CLIP)	E0200-04A0 EO- 14
空气滤清器 (顺序传输零件)	AIR CLEANER		电线 (蓄电池箱)	WRING (BATTERY CASE)	E0200-05A0 EO- 16
(ORDERING TRANSFERRED PARTS)	A9999-01A8	AA- 172	电线 (前工作灯)	WRING (WORKING LAMP, FRONT)	E0200-06A0 EO- 18
BO[发动机相关零件] [ENGINE RELATED PARTS]			附加工作灯 (选配) 级别.....	ADDITIONAL WORK LAMP (OPT)	E0310-01A0 EO- 20
减震器、泵和管子.....	DAMPER, PUMP AND TUBE	B0000-01A0	附加工作灯 (用于级别 1 护罩) (选配)	ADDITIONAL WORK LAMP	
			(FOR LEVEL-1 GUARD) (OPT)	E0310-01A1 EO- 22	

	FIG NO.	PAGE		FIG NO.	PAGE		
后工作灯 (选配)	REAR WORK LAMP (OPT)	E0320-01A0	EO- 24	斗杆和铲斗管路	ARM AND BUCKET LINE	H1220-01A0	HO- 50
信号灯 (选配)	BEACON (WSTD, W-LC) (OPT)	E0340-01A0	EO- 26	斗杆和铲斗管路 (带下降防止阀)	ARM AND BUCKET LINE		
喇叭	HORN	E0410-01A0	EO- 28	(WITH DRIFT PRIVENTIVE)		H1220-01A1	HO- 52
行走报警 (选配)	TRAVEL ALARM (OPT)	E0420-01A0	EO- 30	附件管路 (主左侧) (1 附加工作装置) (选配)	ATTACHMENT LINES		
				(MAIN L.H.) (1 ACTUATOR) (OPT)		H1270-01A0	HO- 56
HO [液压系统] [HYDRAULIC SYSTEM]				溢流阀 (280KG/CM2) (用于附加阀) (选配)	RELIEF VALVE (280KG/CM2)		
液压油箱	HYDRAULIC TANK	H0110-01A0	HO- 2	(FOR SERVICE VALVE) (OPT)		H1270-01A1	HO- 58
液压油箱 (1 附加工作装置) (选配)	HYDRAULIC TANK (1 ACTUATOR) (OPT)	H0110-01A1	HO- 6	溢流阀 (210KG/CM2) (用于附加阀) (选配)	RELIEF VALVE (210KG/CM2)		
主阀 (连接零件) (1/2)	MAIN VALVE(CONNECTING PARTS) (1/2)	H0120-01A0	HO- 10	(FOR SERVICE VALVE) (OPT)		H1270-01A2	HO- 60
主阀 (连接零件) (1 附加工作装置) (选配) (1/2)	MAIN VALVE (OPT)			溢流阀 (250KG/CM2) (用于附加阀) (选配)	RELIEF VALVE (210KG/CM2)		
(CONNECTING PARTS) (1 ACTUATOR) (1/2)		H0120-01A1	HO- 12	(FOR SERVICE VALVE) (OPT)		H1270-01A3	HO- 62
主阀 (附加阀套件) (1 附加工作装置) (选配)	MAIN VALVE			溢流阀 (175KG/CM2) (用于附加阀) (选配)	RELIEF VALVE (175KG/CM2)		
(ADDITIONAL SERVICE VALVE KIT) (1 ACTUATOR) (OPT)		H0120-01A4	HO- 14	(FOR SERVICE VALVE) (OPT)		H1270-01A4	HO- 64
主阀 (附加阀套件) (2 附加工作装置) (选配)	MAIN VALVE			附件管路 (主右侧) (1 附加工作装置) (选配)	ATTACHMENT LINES		
(ADDITIONAL SERVICE VALVE KIT) (2 ACTUATOR) (OPT)		H0120-01A5	HO- 16	(MAIN R.H.) (1 ACTUATOR) (OPT)		H1270-02A0	HO- 66
主阀 (连接零件) (2/2)	MAIN VALVE(CONNECTING PARTS) (2/2)	H0120-02A0	HO- 18	附件管路 (回油) (1 附加工作装置) (选配)	ATTACHMENT LINES		
主阀 (连接零件) (1 附加工作装置) (选配) (2/2)	MAIN VALVE			(RETURN) (1 ACTUATOR) (OPT)		H1270-03A0	HO- 68
(CONNECTING PARTS) (1 ACTUATOR) (OPT) (2/2)		H0120-02A1	HO- 20	附件管路 (蓄能器和电磁阀) (1 附加工作装置) (选配) ..	ATTACHMENT LINES		
主阀 (阀座)	MAIN VALVE (VALVE BRACKET)	H0120-03A0	HO- 22	(ACCUMULATOR AND SOLENOID VALVE) (1 ACTUATOR) (OPT)		H1270-04A0	HO- 70
主阀 (阀座) (1 附加工作装置) (选配)	MAIN VALVE			行走管路	TRAVEL LINES	H1310-01A0	HO- 72
(VALVE BRACKET) (1 ACTUATOR) (OPT)		H0120-03A1	HO- 24	回转管路	SWING LINES	H1340-01A0	HO- 74
主阀 (备用塞) (1 附加工作装置) (选配)	MAIN VALVE			LS 管路	LS LINES	H1810-01A0	HO- 76
(SERVICE VALVE PLUG) (1 ACTUATOR) (OPT)		H0120-04A6	HO- 26	电磁阀 (阀)	SOLENOID (VALVE)	H1831-01A0	HO- 78
主泵 (连接零件)	MAIN PUMP (CONNECTING PARTS)	H0210-01A0A	HO- 28	电磁阀 (阀) (1 附加工作装置) (选配)	SOLENOID (VALVE) (1 ACTUATOR) (OPT)	H1831-01A1	HO- 80
吸油管	SUCTION LINE	H0311-01A0	HO- 32	电磁阀 (软管和支架)	SOLENOID (HOSE AND BRACKET)	H1831-02A0	HO- 82
输油管	DELIVERY LINE	H0312-01A0A	HO- 34	压力开关	PRESSURE SWITCH	H1833-01A0	HO- 84
油冷器管路	OIL COOLER LINE	H0320-01A0	HO- 38	PPC 主管路 (软管)	PPC MAIN LINE(HOSE)	H1840-01A0	HO- 86
回油管	RETURN LINE	H0330-01A0	HO- 40	PPC 主管路 (阀体) (1 附加工作装置) (选配)	PPC MAIN LINE (BLOCK)		
回油管 (1 附加工作装置) (选配)	RETURN LINE (1 ACTUATOR) (OPT)	H0330-01A1	HO- 42	(1 ACTUATOR) (OPT)		H1840-02A1	HO- 88
排油管	DRAIN LINES	H0340-01A0	HO- 44				
动臂管路 (动臂管路)	BOOM LINE (BOOM LINE)	H1210-01A0	HO- 46	JO [主/转台和相关零件] [MAIN / REVOLVING FRAME AND RELATED PARTS]			
动臂管路 (动臂软管)	BOOM LINE (BOOM HOSE)	H1210-02A0	HO- 48	转台 (盖和支架)	REVOLVING FRAME (COVER AND BRACKET)	J1110-01A0	JO- 2
				转台 (板和护圈)	REVOLVING FRAME (SHEET AND GROMMET)	J1110-02A0	JO- 4

	FIG NO.	PAGE
动臂底销.....BOOM FOOT PIN	J1310-01A0	JO- 6
KO [驾驶室和控制系统] [OPERATOR'S COMPARTMENT AND CONTROL SYSTEM]		
驾驶员座椅 (悬浮式)OPERATOR'S SEAT (SUSPENSION)	K0110-01A2	KO- 6
安全带 (50MM 宽) (选配)SEAT BELT (50MM WIDE) (WSTD,W-LC) (OPT)	K0160-01A0	KO- 8
安全带 (78MM 宽) (选配)SEAT BELT (78MM WIDE) (OPT)	K0160-01A1	KO- 10
安全带 (50M M 宽) (选配)SEAT BELT (50 MM) WIDE (OPT)	K0160-01A2	KO- 11a
座椅后盖 (带空调器)SEAT REAR COVER (WITH AIR CONDITIONER)	K0180-01A0	KO- 12
储物箱网 (选配)LUGGAGE BOX NET (OPT)	K0190-01A0	KO- 18
驾驶室 (驾驶室)OPERATOR'S CAB (CAB)	K0210-01A0	KO- 20
驾驶室 (前窗)OPERATOR'S CAB (FRONT WINDOW)	K0210-02A0	KO- 22
驾驶室 (前下窗)OPERATOR'S CAB (FRONT LOWER WINDOW)	K0210-03A0	KO- 26
驾驶室 (顶窗)OPERATOR'S CAB (ROOF WINDOW)	K0210-04A0	KO- 28
驾驶室 (门)OPERATOR'S CAB (DOOR)	K0210-05A0	KO- 30
驾驶室 (门锁)OPERATOR'S CAB (DOOR LOCK)	K0210-06A0	KO- 32
驾驶室 (开锁)OPERATOR'S CAB (OPEN LOCK)	K0210-07A0	KO- 34
驾驶室 (雨刷器和室灯)OPERATOR'S CAB (WIPER AND ROOM LAMP)	K0210-08A0	KO- 36
驾驶室 (收音机)OPERATOR'S CAB (RADIO)	K0210-09A0	KO- 38
驾驶室 (附件)OPERATOR'S CAB (ACCESSORIES)	K0210-10A0	KO- 40
驾驶室 (螺栓)OPERATOR'S CAB(BOLT)	K0210-11A2	KO- 42
驾驶室 (线束)OPERATOR'S CAB (WRING)	K0210-12A0	KO- 44
驾驶室 (监测系统)OPERATOR'S CAB (MONITOR SYSTEM)	K0210-13A0	KO- 46
驾驶室 (盖)OPERATOR'S CAB (COVER)	K0210-14A0	KO- 48
驾驶室 (风道)OPERATOR'S CAB (DUCT)	K0210-15A0	KO- 50
顶部护罩 (选配)TOP GUARD (OPT)	K0220-01A0A	KO- 52
前护罩 (半护) (选配)FRONT GUARD (HALF) (OPT)	K0230-01A0	KO- 54
前护罩 (全护) (级别-1) (选配)FRONT GUARD (FULL) (LEVEL-1) (OPT)	K0230-01A1	KO- 56
前护罩 (全护) (级别-2) (选配)FRONT GUARD (FULL) (LEVEL-2) (OPT)	K0230-01A2	KO- 58
地板垫.....FLOOR MAT	K0310-01A0	KO- 60
地板垫 (1 附加工作装置) (选配)FLOOR MAT (1 ACTUATOR) (OPT)	K0310-01A1	KO- 62
遮雨板 (选配)RAIN PLATE (OPT)	K0320-01A0A	KO- 64
遮阳板 (选配)SUN VISOR (OPT)	K0330-01A0	KO- 66
窗户洗涤剂.....WINDOW WASHER	K0350-01A0	KO- 68

	FIG NO.	PAGE
空调器 (风道)AIR CONDITIONER (DUCT)	K0700-01A0	KO- 70
空调器 (软管)AIR CONDITIONER (HOSE)	K0700-02A0	KO- 72
空调器 (后风道)AIR CONDITIONER (REAR DUCT)	K0700-03A0	KO- 74
灭火器 (英文) (选配)FIRE EXTINGUISHER (ENGLISH) (OPT)	K0830-01A1	KO- 76
地板架 (地板架)FLOOR FRAME (FLOOR FRAME)	K1110-01A0	KO- 78
地板架 (行走控制)FLOOR FRAME (TRAVEL CONTROL)	K1110-02A0	KO- 80
地板架 (搁脚板) (左侧)FLOOR FRAME (FOOT REST) (L.H.)	K1110-03A0	KO- 82
地板架 (搁脚板) (右侧)FLOOR FRAME (FOOT REST) (R.H.)	K1110-04A0	KO- 84
地板架 (搁脚板) (右侧) (1 附加工作装置) (选配)FLOOR FRAME (FOOT REST) (R.H.) (1 ACTUATOR) (OPT)	K1110-04A1	KO- 86
地板架 (底座)FLOOR FRAME (BASE)	K1110-05A0	KO- 90
地板架 (电气)FLOOR FRAME (ELECTRICAL)	K1110-06A0	KO- 92
地板架 (夹子)FLOOR FRAME (CLIP)	K1110-07A0	KO- 94
地板架 (机架和蝶形垫圈)FLOOR FRAME (REAR FRAME AND WIND WASHER)	K1110-08A0	KO- 98
地板架 (操纵杆和阀) (左侧)FLOOR FRAME (LEVER AND VALVE) (L.H.)	K1110-09A0	KO-100
地板架 (操作台) (上部) (左侧) (带空调器和收音机)FLOOR FRAME (CONSOLE) (UPPER) (L.H.) (WITH AIR CONDITIONER AND RADIO)	K1110-10B4	KO-104
地板架 (操作台) (上部) (左侧) (无空调器和收音机) (配选)FLOOR FRAME (CONSOLE) (UPPER) (L.H.) (WITHOUT AIR CONDITIONER AND RADIO) (OPT)	K1110-10B5	KO-106
地板架 (操作台) (下部) (左侧)FLOOR FRAME (CONSOLE) (LOWER) (L.H.)	K1110-11A0	KO-108
地板架 (操作台) (下部) (左侧)FLOOR FRAME (CONSOLE) (UNDER) (L.H.)	K1110-12A0	KO-110
地板架 (操纵杆与阀) (右侧)FLOOR FRAME (LEVER AND VALVE) (R.H.)	K1110-13A0	KO-112
地板架 (操作台) (主控键) (右侧)FLOOR FRAME (CONSOLE) (MASTER KEY) (R.H.)	K1110-14A7	KO-114
地板架 (空调器和底盖)FLOOR FRAME (AIR CONDITIONER AND FOOT COVER)	K1110-15A0	KO-116
地板架 (底盖)FLOOR FRAME (FOOT COVER)	K1110-15B5	KO-118
地板架 (空调器软管)FLOOR FRAME (AIR CONDITIONER HOSE)	K1110-16A0	KO-120
地板架 (加热器软管和卡箍)FLOOR FRAME (HEATER HOSE AND CLAMP)	K1110-17A0	KO-122
地板架 (PPC) (1/2)FLOOR FRAME (PPC) (1/2)	K1110-18A0	KO-124
地板架 (PPC) (2/2)FLOOR FRAME (PPC) (2/2)	K1110-19A0	KO-126

	FIG NO.	PAGE		FIG NO.	PAGE		
地板架 (PPC 卡箍)	FLOOR FRAME (PPC CLAMP)	K1110-20A0	KO-128	回转机构	SWING MACHINERY	N1210-01A0	NO- 6
地板架 (P、T 块和密封)	FLOOR FRAME (P.T. BLOCK AND SEAL)	K1110-21A0	KO-130	回转马达 (连接零件)	SWING MOTOR (CONNECTING PARTS)	N1220-01A0	NO- 14
地板架 (P、T 块和密封) (1 附加工作装置) (选配)	FLOOR FRAME (P.T. BLOCK AND SEAL) (1 ACTUATOR) (OPT)	K1110-21A1	KO-134	回转接头 (连接零件)	SWIVEL JOINT (CONNECTING PARTS)	N1310-01A0	NO- 16
地板架 (P、T 块和密封) (不带空调器和收音机) (选配)	FLOOR FRAME (P.T. BLOCK AND SEAL) (WITHOUT AIR CONDITIONER AND RADIO) (OPT)	K1110-21B5	KO-138	PO [行走和下部管路] [TRAVEL AND LOWER PIPING]			
地板架	FLOOR FRAME	K1110-23A0	KO-142	行走管路	TRAVEL PIPING	P1120-01A0	PO- 2
地板架 (操纵杆把手)	FLOOR FRAME (LEVER KNOB)	K1110-24A0	KO-144	行走管路 (LC)	TRAVEL PIPING (LC)	P1120-01A1	PO- 4
地板安装支架	FLOOR MOUNT	K1120-01A0	KO-146	终传动	FINAL DRIVE	P1210-01A0	PO- 6
开关	SWITCH	K1730-01A0	KO-148	RO [底盘] [UNDER CARRIAGE]			
盖	COVER	K1740-01A0	KO-150	引导轮	FRONT IDLER	R0110-01A0	RO- 2
MO [护罩] [GUARD]				张紧装置	IDLER CUSHION	R0110-02A0	RO- 4
护罩	HOOD	M1110-01A0	MO- 2	张紧装置 (LC)	IDLER CUSHION (LC)	R0110-02A1	RO- 6
机架 (机罩)	FRAME (MACHINE CAB)	M1120-01A0	MO- 4	支重轮	TRACK ROLLER	R0200-01A0	RO- 8
左侧门 (机罩)	LEFT SIDE DOOR (MACHINE CAB)	M1130-01A0	MO- 6	支重轮	TRACK ROLLER	R0200-01A1	RO- 10
右侧门 (机罩)	RIGHT SIDE DOOR (MACHINE CAB)	M1140-01A0	MO- 10	托轮	CARRIER ROLLER	R0300-01A0	RO- 12
隔板 (机罩)	PARTITION (MACHINE CAB)	M1150-01A0	MO- 12	履带板 (湿地型) (860MM 宽) (选配)	TRACK SHOE (SWAMP TYPE)		
隔板	PARTITION	M1160-01A0	MO- 16	(860MM WIDE) (OPT)		R0500-01A0	RO- 14
盖 (机罩) (上部)	COVER (MACHINE CAB) (UPPER)	M1210-01A0	MO- 18	履带板 (平瓦块型) (610MM 宽) (选配)	TRACK SHOE (FLAT TYPE)		
右侧箱	RIGHT SIDE CASE	M1220-01A0	MO- 20	(610MM WIDE) (OPT)		R0500-01A1	RO- 16
扶手	HAND RAIL	M1310-01A0	MO- 22	履带板 (路面型) (600MM 宽) (选配)	TRACK SHOE (ROADLINER TYPE)		
左后视镜 (单个) (选配)	REAR VIEW MIRROR, L.H. (SINGLE) (OPT)	M1410-01A0	MO- 24	(600MM WIDE) (OPT)		R0500-01A2	RO- 18
右后视镜	REAR VIEW MIRROR, R.H.	M1420-01A0	MO- 26	履带板 (带孔三齿) (600MM 宽)	TRACK SHOE		
配重	COUNTER WEIGHT	M1510-01A0	MO- 28	(TRIPLE GROUSER WITH HOLE) (600MM WIDE)		R0500-01A4	RO- 22
配重安装件	COUNTER WEIGHT MOUNTING	M1520-01A0	MO- 30	履带板 (带孔三齿) (700MM 宽) (选配)	TRACK SHOE		
下护板 (转台) (左盖和工具箱)	UNDER COVER (REVOLVING FRAME) (LEFT SIDE COVER AND TOOL BOX)	M1810-01A0	MO- 32	(TRIPLE GROUSER WITH HOLE) (700MM WIDE) (OPT)		R0500-01A5	RO- 24
下护板 (转台) (发动机室)	UNDER COVER (REVOLVING FRAME) (ENGINE ROOM)	M1810-02A0	MO- 34	履带板 (带孔三齿) (800MM 宽) (选配)	TRACK SHOE		
				(TRIPLE GROUSER WITH HOLE) (800MM WIDE) (OPT)		R0500-01A6	RO- 26
NO [回转支承和相关零件] [SWING CIRCUIT AND RELATED PARTS]				履带板 (带孔三齿) (600MM 宽) (用于安装公路用垫的孔) (选配)	TRACK SHOE		
回转支承 (集中润滑)	SWING CIRCUIT (CONCENTRATED GREASING)	N1110-01A0	NO- 2	(TRIPLE GROUSER WITH HOLE) (HOLES TO EQUIP WITH CITY PAD) (OPT)		R0500-01A7	RO- 28
				(600MM WIDE)			
				履带板 (湿地型) (860MM 宽) (选配)	TRACK SHOE (SWAMP TYPE) (OPT)		
				(860MM WIDE) (LC)		R0500-01A8	RO- 30
0C- 9		PC200, 210(LC)-7		PC200, 210(LC)-7			0C- 10

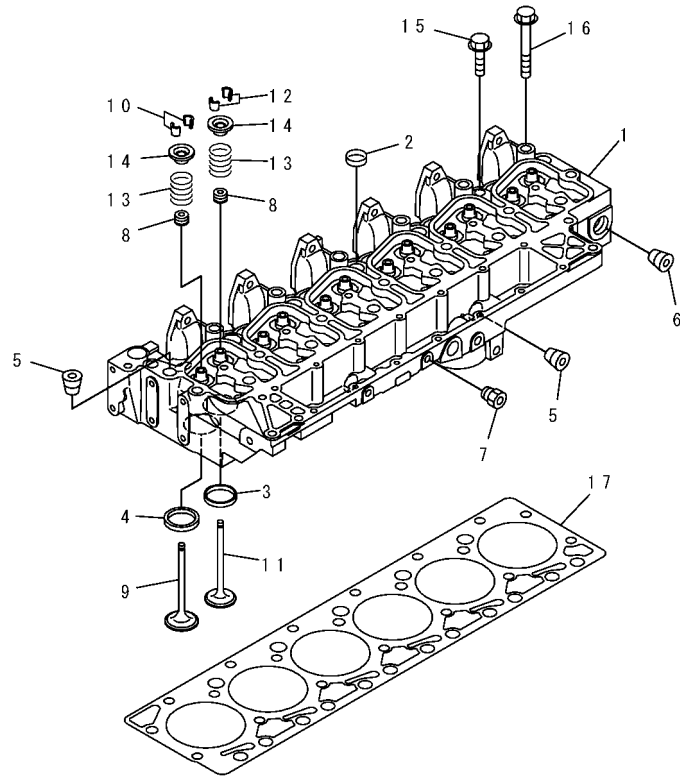
	FIG NO.	PAGE		FIG NO.	PAGE
履带板 (带孔三齿) (600MM 宽) TRACK SHOE (TRIPLE GROUSER WITH HOLE) (600MM WIDE)	R0500-01B1	RO- 32	斗杆 (2.9M) ARM (2.9M) (OPT)	T1200-01A0	TO- 34
履带板 (带孔三齿) (700MM 宽) (选配) TRACK SHOE (TRIPLE GROUSER WITH HOLE) (700MM WIDE) (OPT)	R0500-01B2	RO- 34	斗杆 (2.9M) ARM (2.9M) (210)	T1200-01AA	TO- 35a
履带板 (带孔三齿) (800MM 宽) (选配) TRACK SHOE (TRIPLE GROUSER WITH HOLE) (800MM WIDE) (OPT)	R0500-01B3	RO- 36	斗杆 (2.9M) (用于附加管路) (选配) ARM (2.9M) (FOR ADDITIONAL PIPING) (OPT)	T1200-01A1	TO- 36
履带架 TRACK FRAME	R1100-01A0	RO- 40	斗杆 (2.4M) (用于附加管路) (选配) ARM (2.4M) (FOR ADDITIONAL PIPING) (OPT)	T1200-01A3	TO- 38
履带架 (LC) TRACK FRAME (LC)	R1100-01A1	RO- 42	斗杆 (2.9M) (铲斗连杆) ARM (2.9M) (BUCKET LINK)	T1200-02A0	TO- 42
履带架 (带底板) TRACK FRAME (WITH UNDER COVER)	R1100-01A2	RO- 44	斗杆 (2.9M) (铲斗连杆) (用于附加管路) ARM (2.9M) (BUCKET LINK) (FOR ADDITIONAL PIPING) (210)	T1200-02A1	TO- 44
履带架 (带底板) (LC) TRACK FRAME (WITH UNDER COVER) (LC)	R1100-01A3	RO- 46	斗杆 (2.4M) (铲斗连杆) (选配) ARM (2.4M) (BUCKET LINK) (OPT)	T1200-02A2	TO- 46
下盖 (用于履带架) (选配) UNDER COVER (FOR TRACK FRAME) (OPT)	R1140-01A0	RO- 52	斗杆 (2.9M) (铲斗油缸软管和隔片) ARM (BUCKET CYLINDER HOSE AND SPACER) (2.9M)	T1200-03A0	TO- 48
履带支重轮护板 TRACK ROLLER GUARD (LC)	R1200-01A1	RO- 54	斗杆 (2.4M) (铲斗油缸软管和隔片) (选配) ..ARM (2.4M) (BUCKET CYLINDER HOSE AND SPACER) (OPT)	T1200-03A2	TO- 50
履全带支重轮护板 (选配) TRACK FULL ROLLER GUARD (OPT)	R1200-01A2	RO- 56	斗杆 (2.9M) (附加管路) (选配) ARM (2.9M) (ADDITIONAL PIPING) (OPT)	T1200-04A1	TO- 52
履带全支重轮护板 (选配) TRACK FULL ROLLER GUARD (LC) (LC) (OPT)	R1200-01A3	RO- 58	斗杆 (2.4M) (附加管路) (左侧) (选配) ARM (2.4M) (ADDITIONAL PIPING) (L.H.) (OPT)	T1200-04A3	TO- 56
TO [工作装置] [WORK EQUIPMENT]			斗杆 (2.4M) (附加管路) (右侧) (选配) ARM (2.4M) (ADDITIONAL PIPING) (R.H.) (OPT)	T1200-05A3	TO- 58
动臂 BOOM	T1110-01A1	TO- 2	不安装铲斗时 BUCKET LESS	T1290-01A0	TO- 60
动臂 (顶销和底销) BOOM (TOP PIN AND BOTTOM PIN)	T1110-02A0	TO- 8	抓斗 (选配) CLAMSHELL BUCKET (OPT)	T1510-01A0	TO- 62
动臂 (斗杆油缸管路和铲斗油缸管路) BOOM (ARM CYLINDER LINE AND BUCKET CYLINDER LINE)	T1110-03A0	TO- 10	0.5M ³ 、750MM (横销型) 铲斗 (选配) BUCKET, 0.5M ³ 750MM (HORIZONTAL PIN TYPE) (OPT)	T1510-01A2	TO- 68
动臂 (用于附加管路) (斗杆油缸管路和铲斗油缸管路) (选配) BOOM (FOR ADDITIONAL PIPING) (ARM CYLINDER LINE AND BUCKET CYLINDER LINE) (OPT)	T1110-03A1	TO- 14	0.61M ³ 、950MM 松土铲斗 (选配) RIPPER BUCKET, 0.61M ³ 950MM (OPT)	T1510-01A3	TO- 70
动臂 (润滑管路和工作灯导线) BOOM (LUBRICATING LINE AND WORKING LAMP HARNESS)	T1110-04A0A	TO- 18	坡地调整铲斗 (选配) SLOPE FINISHING BUCKET (OPT)	T1510-01A4	TO- 72
动臂 (增设附加管路) (用于附加管路) (选配) BOOM (ADDITIONAL LINE) (FOR ADDITIONAL PIPING) (OPT)	T1110-05A1	TO- 20	梯形铲斗 (选配) TRAPEZOIDAL BUCKET (OPT)	T1510-01A5	TO- 74
动臂 (工作灯和动臂底部润滑) BOOM (WORKING LAMP AND BOOM FOOT LUBRICATING)	T1110-06A0	TO- 22	0.8M ³ 、1800MM 挖沟清洁铲斗 (选配) DITCH CLEANING BUCKET, 0.8M ³ 1800MM (OPT)	T1510-01A6	TO- 76
动臂油缸 BOOM CYLINDER	T1120-01A0	TO- 24	单柄松土器 (选配) SINGLE SHANK RIPPER (OPT)	T1510-01A7	TO- 78
动臂销 BOOM PIN	T1125-01A0	TO- 28	三柄松土器 (选配) THREE SHANK RIPPER (OPT)	T1510-01A8	TO- 80
斗杆油缸 ARM CYLINDER	T1140-01A0	TO- 30	0.8M ³ (CECE 0.7M ³)、1044MM (岩石型) 铲斗 (选配) BUCKET, 0.8M ³ (CECE 0.7M ³), 1044MM (ROCKTYPE) (OPT)	T1510-01B6	TO- 96
斗杆油缸 (堵头零件) (用于部件) ARM CYLINDER (BLIND PARTS) (FOR COMPONENT)	T1140-01A2	TO- 32	0.9M ³ 、(横销型) 铲斗 (带调整器) BUCKET, 0.9M ³ (HORIZONTAL PIN TYPE) (WITH ADJUSTER)	T1510-01B9	TO-100
			侧刃 (用于铲斗) SIDE CUTTER (FOR BUCKET)	T1510-02A1	TO-102

	FIG NO.	PAGE		FIG NO.	PAGE
破碎机接头 (用于 KRUPP) (选配) BREAKER ADAPTER (FOR KRUPP) (OPT)	T1920-01A0	TO- 104	堵头零件 (动臂) (1 附加工作装置) (用于部件) (选配) BLIND PARTS (BOOM)		
破碎机接头 (用于 NIPPON 气动式) (选配) BREAKER ADAPTER			(1 ACTUATOR) (FOR COMPONENT) (OPT)	W1201-01A3	WO- 14
(FOR NIPPON PNEUMATIC) (OPT)	T1920-01A1	TO- 106	堵头零件 (动臂油缸) (选配) BLIND PARTS (BOOM CYLINDER) (OPT)	W1202-01A0	WO- 16
破碎机接头 (用于 FURUKAWA 和 ATLAS) (选配) BREAKER ADAPTER			堵头零件 (斗杆) (选配) BLIND PARTS (ARM) (OPT)	W1203-01A0	WO- 18
(FOR FURUKAWA AND ATLAS) (OPT)	T1920-01A2	TO- 108	堵头零件 (斗杆) (1 附加工作装置) (选配) BLIND PARTS (ARM)		
破碎机接头 (用于 MUTUDA) (选配) BREAKER ADAPTER			(1 ACTUATOR) (OPT)	W1203-01A1	WO- 20
(FOR MUTUDA) (OPT)	T1920-01A3	TO- 110			
UO [标记和标牌] [MARKS AND PLATES]			YO [修理包和零部件] [SERVICE KIT AND COMPONENT PARTS]		
标记牌 (中文) DECAL AND PLATE (CHINESE PC200)	U0100-01A2	UO- 2	回转机构 (配件提供) SWING MACHINERY (SUPPLY PARTS)	Y0260-01A0	YO- 2
标记牌 (中文) DECAL AND PLATE (CHINESE PC200) (LC)	U0100-01A3	UO- 4	终传动 (配件提供) FINAL DRIVE (SUPPLY PARTS)	Y0270-01A0	YO- 6
标记牌 (中文) DECAL AND PLATE (CHINESE) (PC210)	U0100-01A4	UO- 6	履带螺栓和螺母修理包 SHOE BOLT AND SERVICE KIT	Y0320-01A0	YO- 8
标记牌 (中文) DECAL AND PLATE (CHINESE) (PC210LC)	U0100-01A5	UO- 8	履带链节总成 (90 套) (提供零件) TRACK LINK ASS'Y (90 SET)		
徽标 (KOMATSU) (小) (普通) LOGO (KOMATSU) (SMALL) (GENERAL)	U0150-01A0	UO- 10	(SUPPLY PARTS)	Y0321-01A0	YO- 10
商标 (动臂右侧) (标记) PLATE (BOOM SIDE R.H.) (LOGO MARK)	U0510-01A0	UO- 12	履带链节总成 (98 套) (提供零件) TRACK LINK ASS'Y(98 SET)		
标牌 (吊装能力) (英文) (选配) PLATE (LIFTING CAPACITY) (ENGLISH) (OPT)	U0200-01A1	UO- 14	(SUPPLY PARTS)	Y0321-01A1	YO- 12
标牌 (吊装能力) (英文) (选配) PLATE (LIFTING CAPACITY) (ENGLISH) (OPT)	U0200-01A2	UO- 16	空气滤清器 (内部零件) AIR CLEANER (INNER PARTS)	Y1011-01A0	YO- 14
标牌 (空调器、双滤芯) PLATE (AIR CLEANER, DOUBLE ELEMENT)	U0550-01A1	UO- 28	导线线束 (连接器) (可提供) WRING HARNESS (JUNCTION CONNECTOR)		
标牌 (带蓄能器) (选配) PLATE (WITH ACCULATOR) (OPT)	U0580-01A0	UO- 30	(FOR SUPPLY)	Y1061-01A0	YO- 16
VO [附件] [ACCESSORY]			主泵 (1/11) MAIN PUMP (1/11)	Y1600-01A0	YO- 18
备件..... SPARE PARTS	V0100-01A0	VO- 2	主泵 (2/11) MAIN PUMP (2/11)	Y1600-02A0	YO- 20
帽子和工作服..... CAP AND OVERALL	V0200-01A0	VO- 4	主泵 (3/11) MAIN PUMP (3/11)	Y1600-03A0	YO- 22
工具包..... TOOL KIT	V0300-01A0	VO- 6	主泵 (4/11) MAIN PUMP (4/11)	Y1600-04A0	YO- 24
WO [其它] [MISCELLANEOUS]			主泵 (5/11) MAIN PUMP (5/11)	Y1600-05A0	YO- 26
预防性保养诊断零件 (选配) PREVENTIVE MAINTENANCE CLINIC PARTS (OPT)	W0111-01A0	WO- 2	主泵 (6/11) MAIN PUMP (6/11)	Y1600-06A0	YO- 28
堵头零件 (主体) (选配) BLIND PARTS (BODY) (OPT)	W1200-01A0	WO- 4	主泵 (7/11) MAIN PUMP (7/11)	Y1600-07A0	YO- 30
堵头零件 (主体) (1 附加工作装置) (选配) BLIND PARTS (BODY)			主泵 (8/11) MAIN PUMP (8/11)	Y1600-08A0	YO- 32
(1 ACTUATOR) (OPT)	W1200-01A1	WO- 6	主泵 (9/11) MAIN PUMP (9/11)	Y1600-09A0	YO- 34
堵头零件 (动臂) (选配) BLIND PARTS (BOOM) (OPT)	W1201-01A0	WO- 8	主泵 (10/11) MAIN PUMP (10/11)	Y1600-10A0	YO- 36
堵头零件 (动臂) (1 附加工作装置) (选配) BLIND PARTS (BOOM)			主泵 (11/11) MAIN PUMP (11/11)	Y1600-11A0	YO- 38
(1 ACTUATOR) (OPT)	W1201-01A1	WO- 10	动臂油缸..... BOOM CYLINDER	Y1620-01A0	YO- 40
堵头零件 (动臂) (用于部件) (选配) BLIND PARTS (BOOM)			斗杆油缸..... ARM CYLINDER	Y1620-11A0	YO- 48
(FOR COMPONENT) (OPT)	W1201-01A2	WO- 12	铲斗油缸..... BUCKET CYLINDER	Y1620-41A0	YO- 52
			回转接头..... SWIVEL JOINT	Y1627-01A0	YO- 54
OC- 13	PC200, 210(LC)-7				OC- 14

	FIG NO.	PAGE		FIG NO.	PAGE		
回转马达 (1/3)	SWING MOTOR (1/3)	Y1640-01A0	YO- 56	主阀 (1 附加工作装置) (选配) (12/19)	MAIN VALVE(1 ACTUATOR) (OPT) (12/19)	Y1662-12A0	YO- 128
回转马达 (2/3)	SWING MOTOR (2/3)	Y1640-02A0	YO- 58	主阀 (1 附加工作装置) (选配) (13/19)	MAIN VALVE(1 ACTUATOR) (OPT) (13/19)	Y1662-13A0	YO- 132
回转马达 (3/3)	SWING MOTOR (3/3)	Y1640-03A0	YO- 60	主阀 (1 附加工作装置) (选配) (14/19)	MAIN VALVE(1 ACTUATOR) (OPT) (14/19)	Y1662-14A0	YO- 134
行走马达 (1/3)	SWING MOTOR (1/3)	Y1641-01A0	YO- 62	主阀 (1 附加工作装置) (选配) (15/19)	MAIN VALVE(1 ACTUATOR) (OPT) (15/19)	Y1662-15A0	YO- 136
行走马达 (2/3)	SWING MOTOR (2/3)	Y1641-02A0	YO- 64	主阀 (1 附加工作装置) (选配) (16/19)	MAIN VALVE(1 ACTUATOR) (OPT) (16/19)	Y1662-16A0	YO- 138
行走马达 (3/3)	SWING MOTOR (3/3)	Y1641-03A0	YO- 66	主阀 (1 附加工作装置) (选配) (17/19)	MAIN VALVE(1 ACTUATOR) (OPT) (17/19)	Y1662-17A0	YO- 140
主阀 (1/16)	MAIN VALVE (1/16)	Y1660-01A0	YO- 68	主阀 (1 附加工作装置) (选配) (18/19)	MAIN VALVE(1 ACTUATOR) (OPT) (18/19)	Y1662-18A0	YO- 142
主阀 (2/16)	MAIN VALVE (2/16)	Y1660-02A0	YO- 70	主阀 (1 附加工作装置) (选配) (19/19)	MAIN VALVE(1 ACTUATOR) (OPT) (19/19)	Y1662-19A0	YO- 144
主阀 (3/16)	MAIN VALVE (3/16)	Y1660-03A0	YO- 72	附加阀 (1/3) (选配)	SERVICE VALVE (1/3) (OPT)	Y1669-01A0	YO- 148
主阀 (4/16)	MAIN VALVE (4/16)	Y1660-04A0	YO- 74	附加阀 (2/3) (选配)	SERVICE VALVE (2/3) (OPT)	Y1669-02A0	YO- 150
主阀 (5/16)	MAIN VALVE (5/16)	Y1660-05A0	YO- 76	附加阀 (3/3) (选配)	SERVICE VALVE (3/3) (OPT)	Y1669-03A0	YO- 152
主阀 (6/16)	MAIN VALVE (6/16)	Y1660-06A0	YO- 78	附加阀 (1/3) (选配)	SERVICE VALVE (1/3) (OPT)	Y1669-11A0	YO- 156
主阀 (7/16)	MAIN VALVE (7/16)	Y1660-07A0	YO- 82	附加阀 (2/3) (选配)	SERVICE VALVE (2/3) (OPT)	Y1669-12A0	YO- 158
主阀 (8/16)	MAIN VALVE (8/16)	Y1660-08A0	YO- 84	附加阀 (3/3) (选配)	SERVICE VALVE (3/3) (OPT)	Y1669-13A0	YO- 160
主阀 (9/16)	MAIN VALVE (9/16)	Y1660-09A0	YO- 86	PPC 阀 (用于行走) (1/2)	PPC VALVE (FOR TRAVEL) (1/2)	Y1670-01A0	YO- 162
主阀 (10/16)	MAIN VALVE (10/16)	Y1660-10A0	YO- 88	PPC 阀 (用于行走) (2/2)	PPC VALVE (FOR TRAVEL) (2/2)	Y1670-02A0	YO- 164
主阀 (11/16)	MAIN VALVE (11/16)	Y1660-11A0	YO- 90	PPC 阀 (用于工作装置)	PPC VALVE (FOR WORK EQUIPMENT)	Y1670-11A0	YO- 166
主阀 (12/16)	MAIN VALVE (12/16)	Y1660-12A0	YO- 92	PPC 阀 (用于附件) (选配)	PPC VALVE (FOR ATTACHMENT) (OPT)	Y1670-21A0	YO- 168
主阀 (13/16)	MAIN VALVE (13/16)	Y1660-13A0	YO- 96	EPC 阀 (选配)	EPC VALVE (OPT)	Y1671-01A0	YO- 170
主阀 (14/16)	MAIN VALVE (14/16)	Y1660-14A0	YO- 98	锁阀 (选配)	LOCK VALVE (OPT)	Y1675-01A0	YO- 172
主阀 (15/16)	MAIN VALVE (15/16)	Y1660-15A0	YO- 100	选择阀 (选配)	SELECTOR (OPT)	Y1679-01A0	YO- 174
主阀 (16/16)	MAIN VALVE (16/16)	Y1660-16A0	YO- 102	蓄能器 (AL300-1) (内部零件)	ACCUMULATOR (AL300-1)(INNER PARTS)	Y1480-01A0	YO- 176
主阀 (1 附加工作装置) (选配) (1/19) ...	MAIN VALVE(1 ACTUATOR) (OPT) (1/19)	Y1662-01A0	YO- 104	滤网 (内部零件)	FILTER (INNER PARTS)	Y1851-01A0	YO- 178
主阀 (1 附加工作装置) (选配) (2/19) ...	MAIN VALVE(1 ACTUATOR) (OPT) (2/19)	Y1662-02A0	YO- 106	电磁阀 (内部零件)	SOLENOID (INNER PARTS)	Y1860-01A0	YO- 180
主阀 (1 附加工作装置) (选配) (3/19) ...	MAIN VALVE(1 ACTUATOR) (OPT) (3/19)	Y1662-03A0	YO- 108	电磁阀 (内部零件)	SOLENOID (INNER PARTS)	Y1861-01A0	YO- 182
主阀 (1 附加工作装置) (选配) (4/19) ...	MAIN VALVE(1 ACTUATOR) (OPT) (4/19)	Y1662-04A0	YO- 110	压缩机总成 (用于空调器)	COMPRESSOR ASS'Y (FOR AIR CONDITIONER)	Y1979-01A0	YO- 184
主阀 (1 附加工作装置) (选配) (5/19)	MAIN VALVE(1 ACTUATOR) (OPT) (5/19)	Y1662-05A0	YO- 112	装置总成 (用于空调器)	UNIT ASS'Y (FOR AIR CONDITIONER)	Y1979-11A0	YO- 186
主阀 (1 附加工作装置) (选配) (6/19)	MAIN VALVE(1 ACTUATOR) (OPT) (6/19)	Y1662-06A0	YO- 114	装置总成 (冷却器) (用于空调器)	UNIT ASS'Y (COOLING)		
主阀 (1 附加工作装置) (选配) (7/19)	MAIN VALVE(1 ACTUATOR) (OPT) (7/19)	Y1662-07A0	YO- 118		(FOR AIR CONDITIONER)	Y1979-21A0	YO- 188
主阀 (1 附加工作装置) (选配) (8/19)	MAIN VALVE(1 ACTUATOR) (OPT) (8/19)	Y1662-08A0	YO- 120	送风机总成 (用于空调器)	BLOWER ASS'Y (FOR AIR CONDITIONER)	Y1979-31A0	YO- 192
主阀 (1 附加工作装置) (选配) (9/19)	MAIN VALVE(1 ACTUATOR) (OPT) (9/19)	Y1662-09A0	YO- 122	冷凝器总成 (用于空调器)	CONDENSER ASS'Y (FOR AIR CONDITIONER)	Y1979-41A0	YO- 194
主阀 (1 附加工作装置) (选配) (10/19)	MAIN VALVE(1 ACTUATOR) (OPT) (10/19)	Y1662-10A0	YO- 124	ZZ [件号索引] [NUMERICAL INDEX]	ZZ-		1
主阀 (1 附加工作装置) (选配) (11/19)	MAIN VALVE(1 ACTUATOR) (OPT) (11/19)	Y1662-11A0	YO- 126				

发 动 机
ENGINE

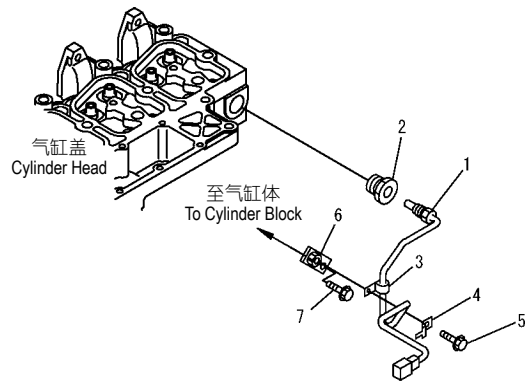
图 A1009-01A0 气缸盖
FIG. A1009-01A0 CYLINDER HEAD



PJ6B436

序号 INDEX	件号 PART NO.	名称 DESCRIPTION	数量 Q'TY	系列号 SERIAL NO.
	6731-11-1370	气缸盖总成..... HEAD ASS'Y	1	26274903-
1	☆	. 气缸盖 HEAD	1	26274903-
2	6736-11-1150	. 塞 PLUG	5	26274903-
3	6732-11-1170	. 排气阀垫..... INSERT,EXHAUST	6	26274903-
4	6732-11-1180	. 进气阀垫..... INSERT,INTAKE	6	26274903-
5	6732-11-1910	. 塞 PLUG	5	26274903-
6	6732-11-1920	. 塞 PLUG	1	26274903-
7	6732-11-1930	. 塞 PLUG	2	26274903-
8	6732-41-4540	密封..... SEAL	12	26274903-
	6736-41-4110	进气阀总成..... INTAKE VALVE ASS'Y	6	26274903-
9	☆	. 阀 VALVE	1	26274903-
10	6732-41-4520	. 锁片..... COTTER	2	26274903-
	6736-41-4120	排气阀总成..... EXHAUST VALVE ASS'Y	6	26274903-
11	☆	. 阀 VALVE	1	26274903-
12	6732-41-4520	. 锁片..... COTTER	2	26274903-
13	6732-41-4430	弹簧..... SPRING	12	26274903-
14	6731-41-4510	座..... RETAINER	12	26274903-
15	6732-11-1610	螺栓..... BOLT	6	26274903-
16	6732-11-1620	螺栓..... BOLT	14	26274903-
17	6735-11-1821	衬垫..... GASKET	1	26274903-
		参见用于 OS.、US.的维修零件图号和维护零件 REFER TO FIG. NOS. OF REPAIR PARTS FOR O.S., U.S., AND SERVICE PARTS.		

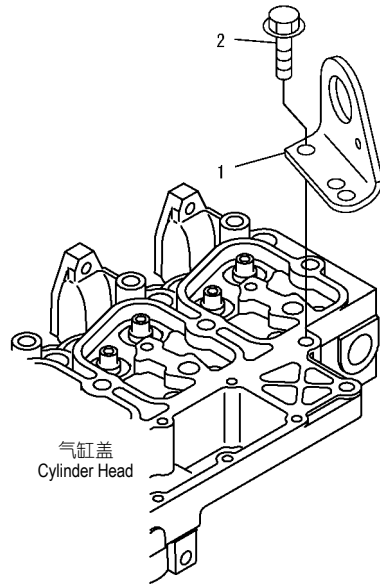
图 A101V-01A1 水温传感器 (#26282903-)
 FIG. WATER TEMPERATURE SENSOR



PJ6B404

序号 INDEX	件号 PART NO.	名称 DESCRIPTION	数量 Q'TY	系列号 SERIAL NO.
1	7861-93-3320	水温传感器.....SENSOR,WATER TEMPERATURE	1	26282903-
2	512-06-11281	接头.....ADAPTER	1	26282900-
3	04434-50610	夹子.....CLIP	1	26282900-
4	08193-20010	夹子.....CLIP	1	26282903-
5	6734-71-5610	螺栓.....BOLT	1	26282900-
6	6136-11-8510	支架.....BRACKET	1	26282900-
7	6732-21-5160	螺栓.....BOLT	1	26282900-

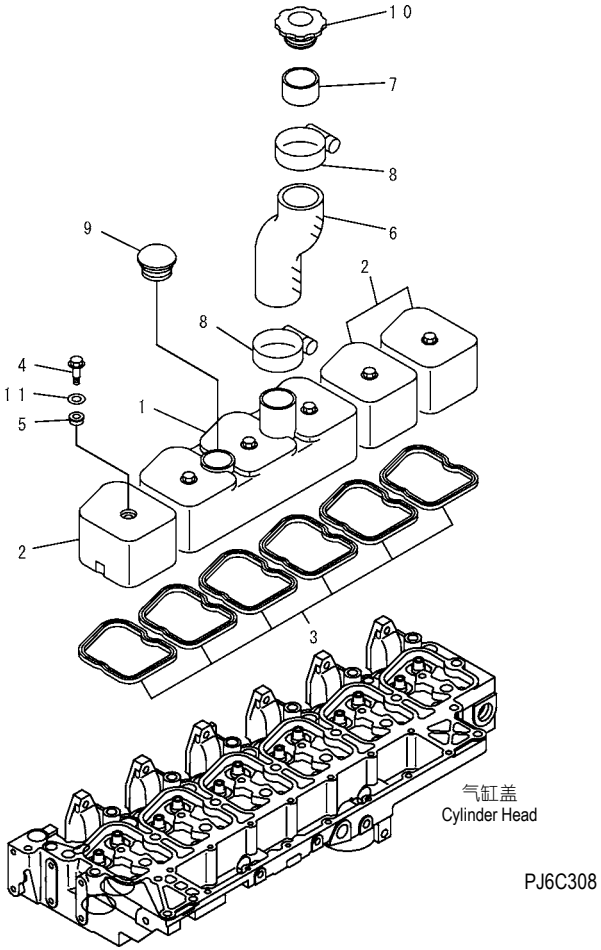
图 A105P-01A0 后吊钩
FIG. A105P-01A0 REAR HANGER



PJ6B415

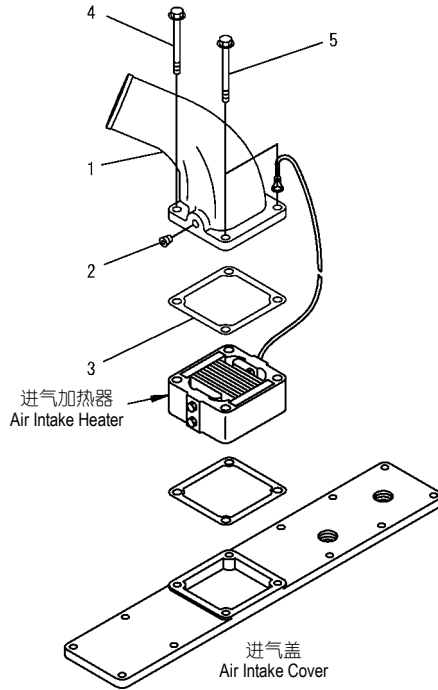
序号 INDEX	件号 PART NO.	名称 DESCRIPTION	数量 Q'TY	系列号 SERIAL NO.
1	6732-11-1710	起升支架.....BRACKET,LIFTING	1	26274903-
2	6732-11-1720	螺栓.....BOLT	2	26274903-

图 A111P-01A0 气缸盖罩
FIG. HEAD COVER



序号 INDEX	件号 PART NO.	名称 DESCRIPTION	数量 Q'TY	系列号 SERIAL NO.
1	6738-11-8110	盖 COVER	1	26274903-
2	6735-11-8120	盖 COVER	3	26274903-
3	6732-11-8181	衬垫 GASKET	6	26274903-
4	6732-11-8130	螺栓 BOLT	6	26274903-
5	6732-11-8210	密封垫 GASKET,SEAL	6	26277761-
6	6130-12-8720	软管 HOSE	1	26274903-
7	6130-12-8630	管子 PIPE	1	26274903-
8	07281-00709	夹子 CLAMP	2	26274903-
9	6204-11-8610	盖 CAP	1	26274903-
10	6130-12-8610	盖 CAP	1	26274903-
11	6732-11-8150	垫圈 WASHER	6	26277761-

图 A131P-01A1 空气连接器
 FIG. A131P-01A1 AIR CONNECTOR



序号 INDEX	件号 PART NO.	名称 DESCRIPTION	数量 Q'TY	系列号 SERIAL NO.
1	6734-11-4150	连接器 CONNECTOR	1	26280116-
2	6732-11-1920	塞 PLUG	1	26280116-
3	6732-11-4811	密封垫 GASKET	1	26280116-
4	6734-11-5210	螺栓 BOLT	1	26280116-
5	6736-81-8730	螺栓 BOLT	2	26280116-

PJ6B412

图号 FIG NO. : A131R-01A0

图 A131R-01A0 进气加热器
 FIG. A131R-01A0 AIR INTAKE HEATER

序号 INDEX	件号 PART NO.	名称 DESCRIPTION	数量 Q'TY	系列号 SERIAL NO.
1	6732-81-5120	加热器总成.....HEATER ASS'Y	1	26274903-
2	6732-11-4811	密封垫.....GASKET	1	26274903-

PJ6B399