

Operation & Maintenance Manual

PC12R-8
PC12R-8 HS
PC15R-8
PC15R-8 HS

HYDRAULIC EXCAVATOR

SERIAL NUMBER

PC12R-8 - F31493 and up

PC12R-8 HS - F31493 and up

PC15R-8 - F22262 and up

PC15R-8 HS - F22262 and up



WARNING

Unsafe use of this machine may cause serious injury or death. Operators and maintenance personnel must read this manual before operating or maintaining this machine.

This manual should be kept inside the cab for reference and periodically reviewed by all personnel who will come into contact with the machine.

KOMATSU
Utility

1.1 FOREWORD

- This manual has been carried out by Komatsu Utility in order to supply their customers with all the necessary information on the machine and the safety regulations related to it, together with the use and maintenance instructions that enable the operator to exploit the capacity of the machine with optimal results and to keep the machine efficient over time.
- The operation manual, together with the spare parts catalogue, is an integral part of the machine and must accompany it, even when it is resold, until its final disposal.
- The manual must be handled with the greatest care and always kept on board the machine, so that it can be consulted at any moment; it must be placed in the appropriate compartment inside the seat support, where also the ownership documents and the logbook are usually kept.
- This manual must be given to the persons who have to use the machine and carry out the routine maintenance operations; they must read the contents carefully more than once, in such a way as to clearly understand what are the correct operating conditions and the dangerous conditions that must be avoided.
In case of loss or damage, request a new copy to Komatsu Utility or your Komatsu Utility Dealer.
- The illustrations contained in this manual may represent machine configurations available on request.
The machines are constantly upgraded in order to increase their efficiency and reliability; this manual sums up all the information regarding the state of technical progress at the moment in which the machine is launched on the market.
Consult your Komatsu Utility Dealer for any updated information.
- Punctual periodic annotations regarding the maintenance operations that have been carried out are important to have a clear prospect of the situation and to know exactly what has been done and what has to be done after the next maintenance interval. Therefore, it is advisable to consult either the hour meter and the maintenance plan frequently.
- Over the years Komatsu Utility Dealers have gathered considerable experience in customer service.
If more information is needed, do not hesitate to contact your Komatsu Utility Dealer: he always knows how to get the best performance from the machine, he can suggest the use of the equipment that is most suitable for specific needs and can provide the technical assistance necessary for any change that may be required to conform the machine to the safety standards and traffic rules.
Furthermore, Komatsu Utility Dealers also ensure their assistance for the supply of Komatsu Utility genuine spare parts, which alone guarantee safety and interchangeability.
- The table included in this manual must be filled in with the machine data, which are the data that must always be indicated to the Dealer when requiring assistance and ordering spare parts.



CAUTION

- **The incorrect use of the machine and inappropriate maintenance operations may cause serious injuries and even death.**
 - **Operators and maintenance personnel must carefully read this manual before using the machine or performing maintenance operations.**
 - **Any serious accident that may occur during the use of the machine or during maintenance operations is due to failure to comply with the instructions given herein.**
 - **The procedures and precautions described in this manual are valid for application to the machine only when it is used correctly.**
If the machine is used for any purpose or in any way other than those described herein, the operator shall be responsible for his own safety and for the safety of any other person involved.
-

1.2 INFORMATION ON SAFETY

Many accidents are caused by insufficient knowledge of and failure to comply with the safety regulations prescribed for the maintenance operations that must be performed on the machine.

In order to avoid accidents, before starting work and before carrying out any maintenance operation, carefully read and be sure to understand all the information and warnings contained in this manual and given on the plates applied onto the machine, so that you can follow the instructions without making mistakes.

To identify the messages regarding safety that are included in this manual and written on the machine plates, the following words have been used.



DANGER

- **This word is used in the safety warnings in the manual and on the plates when the situation is dangerous and it may possibly result in serious injuries or even death.**

These messages describe the safety precautions to be taken in order to avoid any risk. Non-compliance with these instructions may also result in serious damage to the machine.



CAUTION

- **This word is used in the safety warnings in the manual and on the plates to signal risks that may cause moderate damage or injuries.**

The message can be used even to indicate the risk of damage to the machine only.



IMPORTANT

- **This word is used when precautions are indicated, which must be taken to avoid actions that may shorten the life of the machine.**
-

Komatsu Utility cannot reasonably predict every circumstance that might involve a potential hazard during the operation or maintenance of the machine; for this reason, the safety messages included in this manual and applied onto the machine may not include all possible safety precautions.

If all the procedures and operations prescribed for this machine are kept to, you can be sure that the operator and the persons in the vicinity can work in total safety, with no risk of damaging the machine. In case of doubt regarding the safety measures necessary for some procedures, contact Komatsu Utility or your local Dealer.



DANGER

- **Before starting any maintenance operation, position the machine on a firm and level surface, lower the equipment to the ground, engage the safety locks of either the equipment and the controls and stop the engine.**
-



DANGER

- **To make the information clearer, some illustrations in this manual represent the machine without safety guards. Do not use the machine without guards and do not start the engine when the engine protection casing is open, if this is not expressly prescribed for some specific maintenance operations.**
-



DANGER

- It is strictly forbidden to modify the setting of the hydraulic system safety valves; Komatsu Utility cannot be held liable for any damage to persons, property or the machine, if this has been tampered with by modifying the standard setting of the hydraulic system.
-



DANGER

- Before carrying out any electrical welding, disconnect the battery and the alternator (See “2.8.13 PRECAUTIONS CONCERNING THE BATTERY AND THE ALTERNATOR”).
-



DANGER

- Install only authorized additional equipment (See “6.1.3 CHARACTERISTICS OF THE OPTIONAL EQUIPMENT”).
-

1.3 INTRODUCTION

1.3.1 INTENDED USES

The Komatsu Utility MACHINES described in this manual have been designed and constructed to be used mainly for EXCAVATION and EARTH-MOVING OPERATIONS.

If provided with suitable safety devices, they can be used with authorized optional equipment having the characteristics illustrated at point "6.1 AUTHORIZED OPTIONAL EQUIPMENT".

1.3.2 IMPROPER OR UNAUTHORIZED USES



CAUTION

- This paragraph describes some of the improper or unauthorized uses of the machine; since it is impossible to predict all the possible improper uses, if the machine happens to be used for particular applications, contact your Komatsu Utility Dealer before carrying out the work.
-



IMPORTANT

- The instructions regarding the authorized optional equipment are given in the relevant operation and maintenance manuals; if the equipment is supplied by Komatsu Utility, these publications are enclosed to this manual.
 - The instructions regarding the assembly of the authorized equipment, the controls requiring special arrangements on the machine and the hydraulic couplings necessary for the operation of the equipment are grouped in the final section of this manual.
-

Komatsu Utility MACHINES are constructed exclusively for the handling, excavation and treatment of inert materials; therefore, the following uses are absolutely forbidden:

- USE OF THE MACHINE BY MINORS OR INEXPERIENCED PERSONS.
- USE OF THE MACHINE FOR LIFTING PERSONS OR OBJECTS.
- TRANSPORT OF CONTAINERS WITH FLAMMABLE OR DANGEROUS FLUIDS.
- USE OF THE BUCKET FOR DRIVING OR EXTRACTING PILES.
- USE OF THE MACHINE FOR TOWING DAMAGED VEHICLES.

1.3.3 MAIN CHARACTERISTICS

- Simple and easy operation
- Hydrostatic transmission obtained through two axial piston motors that operate epicyclic reduction gears.
- Revolving frame swing achieved by means of an orbital hydraulic motor.
- Main equipment servolevers ensuring also combined movements that can be modulated proportionally and continually.
- Pedal controls for the boom swing and the optional equipment.
- Lever controls for travel and blade.
- Travel speed increase by means of a pedal (optional for PC12R, standard on PC15R).
- Complete series of instruments visible from the operating position.
- Lever accelerator.
- Easy maintenance with simplified intervals.

1.3.4 RUNNING-IN

Every machine is scrupulously adjusted and tested before delivery.

A new machine, however, must be used carefully for the first 100 hours, in order to ensure proper running-in of the various components.

If the machine is subjected to excessive work load at the beginning of operation, its potential yield and its functionality will be shortly and untimely reduced.

Every new machine must be used carefully, paying special attention to the following indications:

- After the start, let the engine idle for 5 minutes, in such a way as to warm it up gradually before actual operation.
- Avoid operating the machine with the limit loads allowed or at high speed.
- Avoid abrupt starts or accelerations, useless sudden decelerations and abrupt reversals.
- After the first 250 hours, carry out the following operations, in addition to those to be performed every 250 hours:
 - 1 - Change the oil in the travel reduction gears.
 - 2 - Check and adjust the engine valve clearance.

SYNTHETIC BIODEGRADABLE OIL TYPE HEES

On machines in which the synthetic biodegradable oil type HEES is used, the following operations are to be performed besides the standard maintenance operations:

- After the first 50 hours of operation, change the hydraulic circuit drain filter.
- After the first 500 hours of operation, change the hydraulic circuit oil.



IMPORTANT

- **When changing the oil filters (cartridges), check their inner part to make sure that there are no deposits.**
If considerable deposits are observed, find out what may have caused them before starting the machine.
 - **The number of operating hours is indicated by the hour meter.**
-

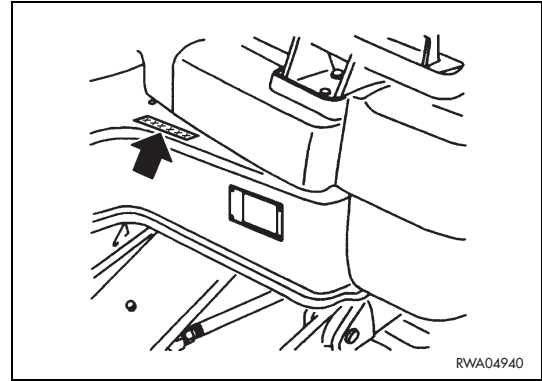
1.4 PRODUCT IDENTIFICATION

The Komatsu Utility EXCAVATOR and its main components are identified by serial numbers stamped on the identification plates.

The serial number and the identification numbers of the components are the only numbers that must be indicated to the Dealer when requiring assistance and ordering spare parts.

1.4.1 MACHINE SERIAL NUMBER

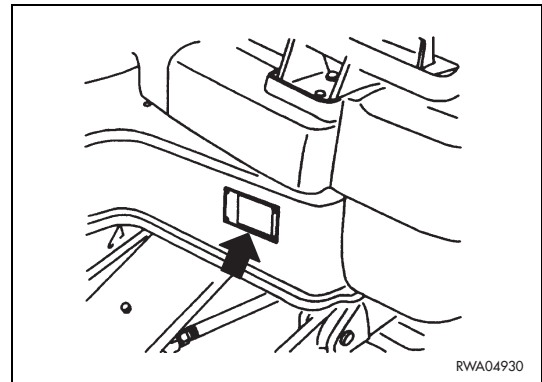
The machine serial number is stamped on the front upper part of the main frame, on the left side.



1.4.2 MACHINE IDENTIFICATION PLATE

The Komatsu Utility EXCAVATORS described in this manual are provided with the CE mark, which certifies that they are in compliance with the CE harmonized standards.

The plate with the mark is applied onto the front wall of the main frame, on the left side.

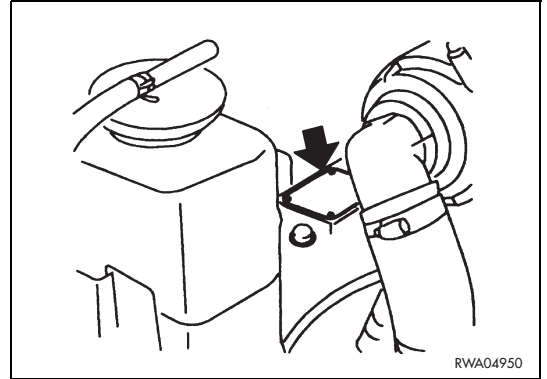


CE	MODELLO - MODEL TYP - MODELE	
KOMATSU	MATRICOLA N° - SERIAL N° FABR. NR. - SERIE NR.	
	ANNO - YEAR BAUJAHR - ANNEE	
	MASSA TOTALE MAX - TOTAL MAX WEIGHT ZUL. GESAMTGEWICHT - POIDS TOTAL MAX	kg
	POTENZA MOTORE - ENGINE POWER LEISTUNG - PUISSANCE MOTEUR	kw
	MASSA MAX ASSE ANT. - MAX WEIGHT FRONT AXLE ZUL. ACHSLAST VORN - POIDS MAX ESSIEU AV	kg
	MASSA MAX ASSE POST. - MAX WEIGHT REAR AXLE ZUL. ACHSLAST HINTEN - POIDS MAX ESSIEU AR	kg
	MANUFACTURED BY KOMATSU UTILITY EUROPE S.p.A. 36025 NOVENTA VICENTINA (VI) ITALY UNDER LICENSE FROM KOMATSU LTD	
		201-98-RB26441

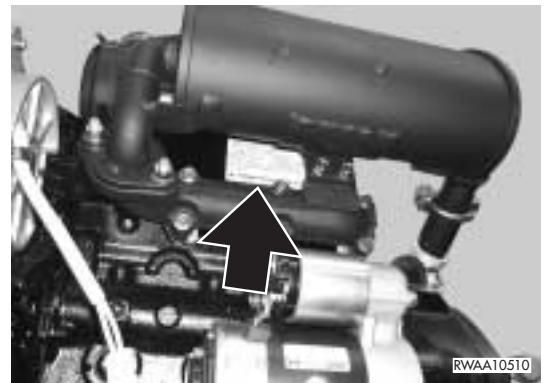
CE	MODEL	
KOMATSU	SERIAL N	
	YEAR	
	TOTAL MAX WEIGHT	kg
	ENGINE POWER	kw
	MAX WEIGHT FRONT AXLE	kg
	MAX WEIGHT REAR AXLE	kg
	MANUFACTURED BY KOMATSU UTILITY EUROPE S.p.A. 36025 NOVENTA VICENTINA (VI) ITALY UNDER LICENSE FROM KOMATSU LTD	
		RYA11760

1.4.3 ENGINE SERIAL NUMBER AND EXHAUST GAS EMISSION PLATE

The engine serial number is stamped on the plate positioned on the front side of the tappet cover.

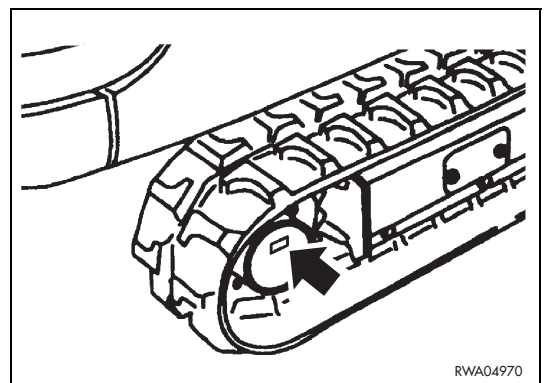


The exhaust gas emission plate is applied on the top of the engine cylinder head cover.



1.4.4 TRAVEL REDUCTION GEAR SERIAL NUMBER

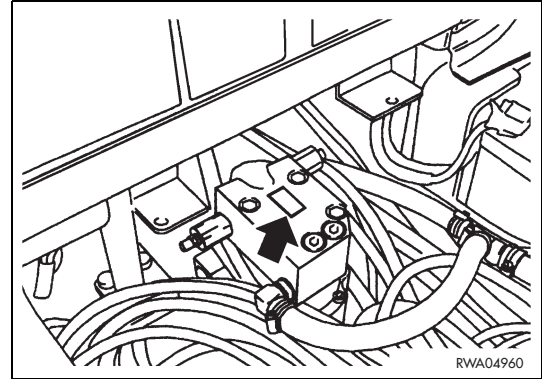
The serial number of the travel reduction gear is stamped on the plate positioned on the outer side of the reduction gear cover.



PRODUCT IDENTIFICATION

1.4.5 SWING REDUCTION GEAR SERIAL NUMBER

The serial number of the swing reduction gear is stamped on the plate positioned on the swing motor head.



1.4.6 CAB SERIAL NUMBER

The cab serial number is stamped on the plate positioned on the right side.



1.4.7 SERIAL NUMBERS AND DEALER'S ADDRESS

Machine n. _____ Model _____

Engine n. _____

Travel reduction gear n. _____

Swing reduction gear n. _____

Cab n. _____

Dealer:

Address: _____

_____ Tel. _____

Person to contact: _____

NOTES: _____

TABLE OF CONTENTS

1.1	FOREWORD	1
1.2	INFORMATION ON SAFETY	2
1.3	INTRODUCTION	4
1.3.1	INTENDED USES	4
1.3.2	IMPROPER OR UNAUTHORIZED USES	4
1.3.3	MAIN CHARACTERISTICS	5
1.3.4	RUNNING-IN	5
1.4	PRODUCT IDENTIFICATION	6
1.4.1	MACHINE SERIAL NUMBER	6
1.4.2	MACHINE IDENTIFICATION PLATE	6
1.4.3	ENGINE SERIAL NUMBER AND EXHAUST GAS EMISSION PLATE	7
1.4.4	TRAVEL REDUCTION GEAR SERIAL NUMBER	7
1.4.5	SWING REDUCTION GEAR SERIAL NUMBER	8
1.4.6	CAB SERIAL NUMBER	8
1.4.7	SERIAL NUMBERS AND DEALER'S ADDRESS	9

SAFETY AND ACCIDENT PREVENTION

2.1	SAFETY, NOISE AND VIBRATION PLATES	20
2.1.1	POSITION OF THE SAFETY PLATES	20
2.1.2	PICTOGRAMS AND RELEVANT MEANINGS	22
2.1.3	POSITION OF THE NOISE PLATES ON MACHINES WITH CAB	26
2.1.4	POSITION OF THE NOISE PLATES ON MACHINES WITH CANOPY	27
2.1.5	VIBRATIONS TO WHICH THE OPERATOR IS SUBJECTED	28
2.2	GENERAL PRECAUTIONS	29
2.2.1	GENERAL SAFETY RULES	29
2.2.2	SAFETY DEVICES AND GUARDS	29
2.2.3	CLOTHING AND PERSONAL PROTECTION ITEMS	29
2.2.4	UNAUTHORIZED MODIFICATIONS	30
2.2.5	LEAVING THE OPERATOR'S SEAT	30
2.2.6	GETTING ON AND OFF THE MACHINE	31
2.2.7	PREVENTING FIRES DUE TO FUEL AND OIL	31
2.2.8	PREVENTING BURNS	32
2.2.9	PREVENTING DAMAGE DUE TO ASBESTOS POWDER	32
2.2.10	PREVENTING DAMAGE CAUSED BY THE WORK EQUIPMENT	32
2.2.11	FIRE EXTINGUISHERS AND FIRST AID KIT	33
2.2.12	PRECAUTIONS CONCERNING THE CAB STRUCTURE	33
2.2.13	PRECAUTIONS CONCERNING THE EQUIPMENT	33
2.3	PRECAUTIONS TO BE TAKEN BEFORE STARTING THE ENGINE	34
2.3.1	SAFETY ON THE WORK SITE	34
2.3.2	FIRE PREVENTION	34
2.3.3	PRECAUTIONS TO BE TAKEN FOR THE OPERATOR'S CAB	34
2.3.4	ROOM VENTILATION	35
2.3.5	PRECAUTIONS TO BE TAKEN FOR THE LIGHTS	35
2.3.6	CLEANING THE WINDOWS - CHECKING THE WINDSHIELD WIPER BLADES	35

	Page
2.4 PRECAUTIONS TO BE TAKEN WHEN WORKING	36
2.4.1 STARTING THE ENGINE	36
2.4.2 CHECK THE DIRECTION BEFORE STARTING THE MACHINE	36
2.4.3 CHECKS FOR TRAVELLING IN REVERSE	36
2.4.4 MOVING THE MACHINE	37
2.4.5 MOVING ON SLOPES	38
2.4.6 WORKING ON SLOPES	39
2.4.7 UNAUTHORIZED OPERATIONS	39
2.4.8 PREVENTING ELECTROCUTION	40
2.4.9 VISIBILITY	41
2.4.10 WORKING ON ICY OR SNOW-COVERED SURFACES	41
2.4.11 PREVENTING DAMAGE CAUSED BY THE WORK EQUIPMENT	41
2.4.12 WORKING ON LOOSE GROUND	41
2.4.13 PARKING THE MACHINE	42
2.5 TRANSPORTING THE MACHINE ON MOTOR VEHICLES	43
2.5.1 LOADING AND UNLOADING	43
2.5.2 TRANSPORT	43
2.6 BATTERY	44
2.6.1 PREVENTING RISKS THAT MAY BE DUE TO THE BATTERY	44
2.6.2 STARTING WITH BOOSTER CABLES	44
2.7 PRECAUTIONS FOR THE REMOVAL	45
2.8 PRECAUTIONS FOR MAINTENANCE	46
2.8.1 WARNING PLATES	46
2.8.2 TOOLS	46
2.8.3 PERSONNEL	46
2.8.4 EQUIPMENT	47
2.8.5 WORKING UNDER THE MACHINE	47
2.8.6 CLEANING THE MACHINE	47
2.8.7 USE OF THE ENGINE DURING MAINTENANCE OPERATIONS	48
2.8.8 PERIODICAL CHANGE OF THE PARTS THAT ARE CRITICAL FOR SAFETY	48
2.8.9 STOP THE ENGINE BEFORE CARRYING OUT ANY MAINTENANCE OPERATION OR INSPECTION	48
2.8.10 RULES TO BE FOLLOWED DURING FUEL OR OIL TOPPING UP	49
2.8.11 CHECKING THE COOLANT LEVEL IN THE RADIATOR	49
2.8.12 USING LAMPS	49
2.8.13 PRECAUTIONS CONCERNING THE BATTERY AND THE ALTERNATOR	50
2.8.14 PRECAUTIONS CONCERNING THE STARTER	50
2.8.15 HANDLING HIGH-PRESSURE PIPES	51
2.8.16 PRECAUTIONS TO BE TAKEN WHEN HANDLING HIGH-PRESSURE OIL	51
2.8.17 PRECAUTIONS FOR MAINTENANCE OPERATIONS AT HIGH TEMPERATURES AND HIGH PRESSURE	51
2.8.18 COOLING FAN AND BELT	52
2.8.19 WASTE MATERIALS	52
2.8.20 PRECAUTIONS FOR THE USE OF THE synthetic biodegradable oil type HEES	52

THE MACHINE AND ITS OPERATIONS

3.1	SAFETY LOCKS	54
3.1.1	MACHINE LOCKS	54
3.2	GENERAL VIEWS	55
3.2.1	FRONT GENERAL VIEW	55
3.2.2	GENERAL VIEW OF THE MACHINE WITH CANOPY	56
3.2.3	GENERAL VIEW OF THE DRIVER'S SEAT	57
3.3	INSTRUMENTS AND CONTROLS	58
3.3.1	INSTRUMENTS	58
3.3.2	WARNING LIGHTS	59
3.3.3	SWITCHES AND PUSH BUTTONS	61
3.3.4	ELECTRICAL ACCESSORIES	64
3.3.5	MACHINE CONTROLS	66
3.4	FUSES AND RELAYS	75
3.4.1	FUSES	75
3.4.2	RELAYS	76
3.5	GUARDS AND DRIVER'S SEAT	77
3.5.1	ENGINE HOOD	77
3.5.2	CANOPY	78
3.5.3	CAB	78
3.5.3.1	SLIDING DOOR	79
3.5.3.2	FRONT OPENING WINDSHIELD	80
3.5.3.3	FRONT WINDSHIELD (LOWER PART)	81
3.5.3.4	SIDE OPENING WINDOW	82
3.5.4	VENTILATION AND HEATING	83
3.5.5	SEAT	83
3.5.6	SAFETY BELT	84
3.5.7	EMERGENCY EXIT	84
3.5.8	TECHNICAL DOCUMENTATION CASE	85
3.5.9	FIRE EXTINGUISHER	85
3.5.10	FIRST AID KIT	85
3.6	USE OF THE MACHINE	87
3.6.1	CHECKS BEFORE STARTING THE ENGINE	87
3.6.1.1	VISUAL CHECKS	87
3.6.1.2	DAILY CHECKS	87
3.6.1.3	OPERATIONAL CHECKS	88
3.6.2	STARTING THE ENGINE	89
3.6.2.1	STARTING WITH WARM ENGINE OR IN TEMPERATE CLIMATES	89
3.6.2.2	STARTING WITH COLD ENGINE OR IN COLD CLIMATES	90
3.6.3	WARMING THE ENGINE	91
3.6.4	HEATING THE HYDRAULIC OIL	91
3.6.5	HOW TO MOVE THE MACHINE	91
3.6.5.1	STEERING (CHANGING DIRECTION)	93
3.6.5.2	MOVING ON SLOPES	94
3.6.5.3	MAXIMUM IMMERSION DEPTH	95

	Page
3.7 PARKING THE MACHINE	96
3.7.1 PARKING ON LEVEL GROUND	96
3.7.2 PARKING ON SLOPES	97
3.8 STOPPING THE ENGINE	98
3.9 TRANSPORTING THE MACHINE ON MOTOR VEHICLES	99
3.9.1 LOADING AND UNLOADING THE MACHINE	99
3.9.2 TRANSPORT	100
3.10 LIFTING THE MACHINE	101
3.11 PRECAUTIONS TO BE TAKEN IN THE COLD SEASON	102
3.11.1 FUEL AND LUBRICANTS	102
3.11.2 COOLANT	102
3.11.3 BATTERY	102
3.11.4 OTHER PRECAUTIONS	103
3.11.5 PRECAUTIONS TO BE TAKEN AT THE END OF WORK	103
3.12 PRECAUTIONS TO BE TAKEN IN THE WARM SEASON	104
3.13 USING THE WORK EQUIPMENT	105
3.13.1 ORGANIZING THE WORK AREA	105
3.13.2 POSITIONING THE MACHINE FOR DIGGING OPERATIONS	106
3.13.3 DIGGING METHOD	107
3.13.4 CHANGING THE BUCKET	108
3.14 USING THE MACHINE WITH VARIABLE TRACK GAUGE	109
3.14.1 HOW TO USE THE VARIABLE TRACK GAUGE	109
3.14.2 ADJUSTING THE BLADE	110
3.15 LONG PERIODS OF INACTIVITY	111
3.15.1 BEFORE THE PERIOD OF INACTIVITY	111
3.15.2 DURING THE PERIOD OF INACTIVITY	112
3.15.3 AFTER THE PERIOD OF INACTIVITY	112
3.16 TROUBLESHOOTING	113
3.16.1 OCCURRENCES THAT ARE NOT FAILURES	113
3.16.2 HOW TO REMOVE THE MACHINE	113
3.16.3 AFTER THE FUEL HAS RUN OUT	114
3.16.4 IF THE BATTERY IS DOWN	114
3.16.4.1 STARTING WITH BOOSTER CABLES	115
3.16.5 OTHER TROUBLES	116
3.16.5.1 ELECTRICAL CIRCUIT	116
3.16.5.2 HYDRAULIC SYSTEM	116
3.16.5.3 ENGINE	117

MAINTENANCE

4.1	GUIDE TO MAINTENANCE	120
4.2	MAINTENANCE NOTES	122
4.2.1	NOTES REGARDING THE ENGINE	122
4.2.1.1	ENGINE OIL	122
4.2.1.2	COOLANT	122
4.2.1.3	FUEL	123
4.2.2	NOTES REGARDING THE HYDRAULIC SYSTEM	123
4.2.3	NOTES REGARDING THE ELECTRICAL SYSTEM	124
4.2.4	NOTES REGARDING LUBRICATION	124
4.2.5	PARTS SUBJECT TO WEAR THAT PERIODICALLY NEED CHANGING	125
4.3	FUEL, COOLANT AND LUBRICANTS	126
4.3.1	HOMOLOGATED HEES SYNTHETIC BIODEGRADABLE LUBRICANTS	128
4.4	DRIVING TORQUES FOR SCREWS AND NUTS	129
4.4.1	STANDARD DRIVING TORQUES	129
4.4.2	SPECIFIC DRIVING TORQUES	129
4.5	LUBRICATION	130
4.5.1	LUBRICATION DIAGRAM PC12R	130
4.5.2	LUBRICATION DIAGRAM PC12R HS (VARIABLE TRACK GAUGE)	131
4.5.3	LUBRICATION DIAGRAM PC15R	132
4.5.4	LUBRICATION DIAGRAM PC15R HS (VARIABLE TRACK GAUGE)	133
4.6	PERIODICAL CHANGE OF THE COMPONENTS CONNECTED WITH SAFETY	134
4.6.1	CRITICAL PARTS FOR SAFETY	135
4.7	MAINTENANCE PLAN	138
4.7.1	WHEN REQUIRED	141
4.7.1.a	WASHING THE COOLING CIRCUIT	141
4.7.1.b	DRAINING THE FUEL TANK	142
4.7.1.c	CHECKING THE ELECTRICAL SYSTEM	142
4.7.1.d	CHECKING THE STEEL TRACK TENSION	143
4.7.1.e	CHECKING THE RUBBER TRACKS	145
4.7.1.f	CHECKING THE RUBBER TRACK TENSION	147
4.7.1.g	CHANGING THE RUBBER TRACK	149
4.7.1.h	LUBRICATING THE ARTICULATIONS	151
4.7.2	MAINTENANCE INTERVALS IN CASE OF USE OF THE DEMOLITION HAMMER (BREAKER)	152
4.7.2.a	CHANGING THE HYDRAULIC OIL FILTER	152
4.7.2.b	CHANGING THE HYDRAULIC OIL	152
4.7.3	CHECKS BEFORE STARTING	153
4.7.3.a	VARIOUS CHECKS	153
4.7.3.b	CHECKING THE COOLANT LEVEL	153
4.7.3.c	CHECKING THE FUEL LEVEL	154
4.7.3.d	CHECKING THE ENGINE OIL LEVEL	154
4.7.3.e	CHECKING THE OIL LEVEL IN THE HYDRAULIC CIRCUIT	155
4.7.4	MAINTENANCE AFTER THE FIRST 50 HOURS OF OPERATION (Only for machines in which the synthetic biodegradable oil type HEES is used)	156

TABLE OF CONTENTS

	Page
4.7.5	MAINTENANCE EVERY 100 HOURS OF OPERATION 157
4.7.5.a	LUBRICATING THE JOINTS AND THE BALL-BEARING RING 157
4.7.5.b	LUBRICATING THE VARIABLE TRACK GAUGE SLIDING GUIDES (PC12R HS – PC15R HS) 159
4.7.5.c	CLEANING THE AIR CLEANER CARTRIDGE 160
4.7.6	MAINTENANCE AFTER THE FIRST 250 HOURS OF OPERATION 161
4.7.7	MAINTENANCE EVERY 250 HOURS OF OPERATION 161
4.7.7.a	ADJUSTING THE FAN BELT TENSION 161
4.7.7.b	CHECKING THE BATTERY ELECTROLYTE LEVEL 162
4.7.7.c	CHECKING THE OIL LEVEL IN THE TRAVEL REDUCTION GEARS 163
4.7.7.d	CHANGING THE HYDRAULIC SYSTEM OIL FILTER 164
4.7.7.e	CHANGING THE ENGINE OIL 165
4.7.8	MAINTENANCE AFTER THE FIRST 500 HOURS OF OPERATION (Only for machines in which the synthetic biodegradable oil type HEES is used) 166
4.7.9	MAINTENANCE EVERY 500 HOURS OF OPERATION 166
4.7.9.a	CHANGING THE ENGINE OIL FILTER 166
4.7.9.b	CHANGING THE FUEL FILTER 167
4.7.9.c	CHANGING THE FUEL PUMP PRECLEANER 168
4.7.9.d	CHANGING THE AIR CLEANER CARTRIDGE 169
4.7.9.e	CLEANING THE OUTSIDE OF THE RADIATORS 169
4.7.9.f	DRAINING THE HYDRAULIC OIL TANK (Only for machines in which the synthetic biodegradable oil type HEES is used) 170
4.7.10	MAINTENANCE EVERY 1000 HOURS OF OPERATION 171
4.7.10.a	CHANGING THE OIL IN THE TRAVEL REDUCTION GEARS 171
4.7.11	MAINTENANCE EVERY 2000 HOURS OF OPERATION 172
4.7.11.a	CHANGING THE HYDRAULIC SYSTEM OIL AND CLEANING THE SUCTION FILTER 172
4.7.11.b	CHANGING THE COOLANT 174
4.7.11.c	CHECKING AND ADJUSTING THE ENGINE VALVE CLEARANCE 174
4.7.11.d	CHECKING THE ALTERNATOR AND THE STARTER 174

TECHNICAL SPECIFICATIONS

5.1	TECHNICAL DATA 176
5.1.1	STANDARD OVERALL DIMENSIONS PC12R 176
5.1.2	TECHNICAL CHARACTERISTICS PC12R 177
5.1.3	STANDARD OVERALL DIMENSIONS PC12R HS (VARIABLE TRACK GAUGE) 178
5.1.4	TECHNICAL CHARACTERISTICS PC12R HS (VARIABLE TRACK GAUGE) 179
5.1.5	STANDARD OVERALL DIMENSIONS PC15R 180
5.1.6	TECHNICAL CHARACTERISTICS PC15R 181
5.1.7	STANDARD OVERALL DIMENSIONS PC15R HS (VARIABLE TRACK GAUGE) 182
5.1.8	TECHNICAL CHARACTERISTICS PC15R HS (VARIABLE TRACK GAUGE) 183
5.1.9	LIFTING CAPACITY WITH RAISED BLADE PC12R 184
5.1.10	LIFTING CAPACITY WITH LOWERED BLADE PC12R 185

5.1.11	LIFTING CAPACITY WITH RAISED BLADE PC12R HS (VARIABLE TRACK GAUGE NARROWED)	186
5.1.12	LIFTING CAPACITY WITH RAISED BLADE PC12R HS (VARIABLE TRACK GAUGE WIDENED)	187
5.1.13	LIFTING CAPACITY WITH LOWERED BLADE PC12R HS (VARIABLE TRACK GAUGE NARROWED)	188
5.1.14	LIFTING CAPACITY WITH LOWERED BLADE PC12R HS (VARIABLE TRACK GAUGE WIDENED)	189
5.1.15	LIFTING CAPACITY WITH RAISED BLADE PC15R	190
5.1.16	LIFTING CAPACITY LOWERED BLADE PC15R	191
5.1.17	LIFTING CAPACITY WITH RAISED BLADE PC15R HS (VARIABLE TRACK GAUGE NARROWED)	192
5.1.18	LIFTING CAPACITY WITH RAISED BLADE PC15R HS (VARIABLE TRACK GAUGE WIDENED)	193
5.1.19	LIFTING CAPACITY WITH LOWERED BLADE PC15R HS (VARIABLE TRACK GAUGE NARROWED)	194
5.1.20	LIFTING CAPACITY WITH LOWERED BLADE PC15R HS (VARIABLE TRACK GAUGE WIDENED)	195

AUTHORIZED OPTIONAL EQUIPMENT

6.1	AUTHORIZED OPTIONAL EQUIPMENT	198
6.1.1	PRECAUTIONS REGARDING SAFETY	198
6.1.2	PRECAUTIONS REGARDING THE INSTALLATION OF EQUIPMENT	199
6.1.3	CHARACTERISTICS OF THE OPTIONAL EQUIPMENT	200
6.2	ARRANGEMENT FOR THE INSTALLATION OF THE DEMOLITION HAMMER (BREAKER)	201
6.2.1	DESCRIPTION AND CONTROL	201
6.2.2	USE OF THE DEMOLITION HAMMER AND RULES TO BE OBSERVED	201
6.2.3	INSTALLING AND REMOVING THE DEMOLITION HAMMER	205
6.2.3.1	INSTALLING THE HAMMER	205
6.2.3.2	REMOVING THE HAMMER	206
6.2.4	MAINTENANCE	206

