



# **Specification Manual N14 Series Engines 1994 Certification Levels**

## Foreword

This manual contains complete assembly and rebuild specifications for the 1994 model N14 engine and all associated components manufactured by Cummins Engine Company, Inc. This manual is intended as a quick reference guide for an experienced technician who is familiar with our product. Various accessory and component suppliers can be contacted directly for any information **not** covered in this manual.

A series of specific service manuals (Troubleshooting and Repair, Shop, Alternative Repair, and so on) are available and can be ordered by filling out and mailing the Literature Order Form located at the end of this manual.

Reporting of errors, omissions, and recommendations for improving this publication by the user is encouraged. Please use the postage paid, self-addressed Literature Survey Form at the end of this manual for communicating your comments.

The specifications in this manual are based on the most current information at the time of publication. Cummins Engine Company, Inc. reserves the right to initiate any changes at any time without obligation. If differences are found between your engine and the information in this manual, contact a Cummins Authorized Repair Location, a Cummins Division Office, or the factory.

The latest technology and the highest quality components are used to manufacture the products of Cummins Engine Company, Inc. When replacement parts are needed, we recommend using only genuine Cummins or ReCon® exchange parts. These parts can be identified by the following trademarks:



# Table of Contents

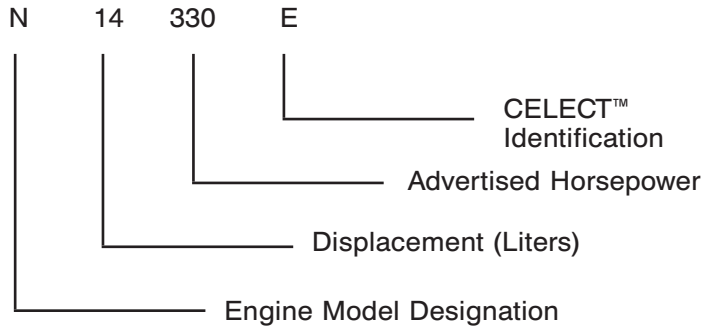
<b>Additional Service Literature</b> .....	67
<b>Capscrew Markings and Torque Values</b> .....	57
Capscrew Markings and Torque Values - Metric.....	58
Capscrew Markings and Torque Values - U.S. Customary.....	59
<b>Component Manufacturers' Addresses</b> .....	63
Air Compressors.....	63
Air Cylinders.....	63
Air Heaters.....	63
Air Starting Motors.....	63
Alternators.....	63
Auxiliary Brakes.....	63
Belts.....	63
Catalytic Convertors.....	63
Clutches.....	63
Coolant Heaters.....	63
Drive Plates.....	63
Electric Starting Motors.....	64
Engine Protection Controls.....	64
Fan Clutches.....	64
Fans.....	64
Filters.....	64
Flexplates.....	64
Fuel Warmers.....	64
Gauges.....	64
Governors.....	64
Heat Sleeves.....	65
Hydraulic and Power Steering Pumps.....	65
Oil Heaters.....	65
Torque Converters.....	65
<b>Component Specifications and Torque Values</b> .....	10
Accessory Drive - Rebuild Specifications.....	48
Air Compressor - Inspection Specifications.....	50
Cam Follower Assembly - Rebuild Specifications.....	38
Cam Follower Assembly - Torque Values.....	40
Cooling System - Torque Values.....	47
Cylinder Block - Rebuild Specifications.....	24
Cylinder Block - Torque Values.....	30
Cylinder Head - Rebuild Specifications.....	31
Drive Belt Tension - Fan Belts.....	13
Engine Assembly - Capscrew Torque Values.....	14
Engine Assembly - Specifications.....	10
Engine Testing - Test Specifications.....	50
Fuel Pump and Compressor Drive - Torque Values.....	49
Injectors - Rebuild Specifications.....	40
Lubricating Oil Cooler - Specifications.....	44
Lubricating Oil Pump - Inspection Specifications.....	41
Lubricating Oil System - Capacities.....	41
Lubricating Oil System - Torque Values.....	44
Rocker Lever Housing Assembly - Rebuild Specifications.....	36
Rocker Lever Housing Assembly - Torque Values.....	37
Thermostat Housing Assembly - Rebuild Specifications.....	47
Turbocharger - Inspection Specifications.....	50
Vehicle Braking - Rebuild Specifications.....	51
Water Pump Assembly - Rebuild Specifications.....	46
<b>Drive Belt Tension</b> .....	53
<b>Engine Diagrams</b> .....	3
<b>Engine Identification</b> .....	1
C-Brake Dataplate.....	2
Electronic Control Module Dataplate.....	2
Engine Dataplate.....	1
<b>General Engine Specifications</b> .....	6
Air Induction System.....	7

	<b>Page</b>
Batteries (State of Charge) .....	8
Cooling System .....	7
Electrical System .....	8
Exhaust System .....	7
Fuel System .....	8
General Engine Data .....	6
Lubricating Oil System .....	7
<b>Injection Timing Codes</b> .....	<b>52</b>
<b>Newton-Meter to Foot-Pound Conversion Chart</b> .....	<b>56</b>
<b>Pipe Plug Torque Values</b> .....	<b>60</b>
<b>Service Literature Ordering Location</b> .....	<b>68</b>
<b>Specifications - General Information</b> .....	<b>5</b>
<b>Tap-Drill Chart - U.S. Customary &amp; Metric</b> .....	<b>61</b>
<b>Torque Values for Straight Thread Fittings and Plugs</b> .....	<b>60</b>
<b>Valve and Injector Adjustments*</b> .....	<b>9</b>
Cummins Engine Brake .....	9
Injectors .....	9
Jacobs® Engine Brake .....	9
Valve and Injector Adjustment Sequence .....	9
Valves .....	9
<b>Weight and Measures - Conversion Factors</b> .....	<b>55</b>

N14

## Engine Identification

The model name provides the following engine data:

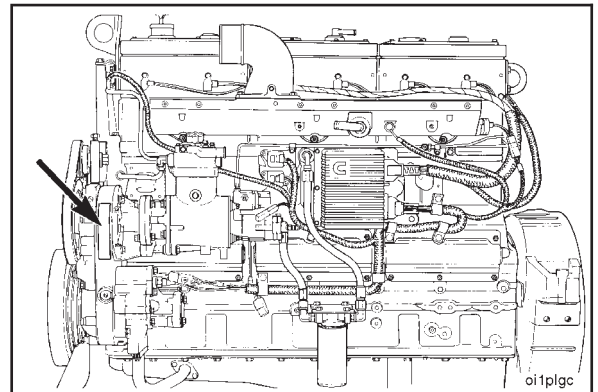


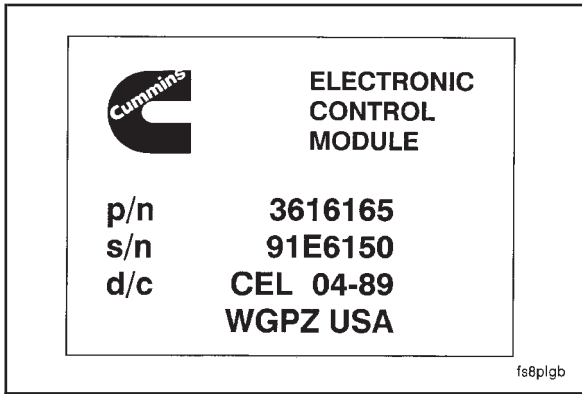
## Engine Dataplate

The engine dataplate provides the model identification and other important information about the engine.

Have the following engine data available when communicating with a Cummins Authorized Repair Location. The information on the dataplate is **mandatory** when sourcing service parts:

1. Engine Serial Number (E.S.N.)
2. Control Parts List (CPL)
3. Model
4. Advertised Horsepower and RPM



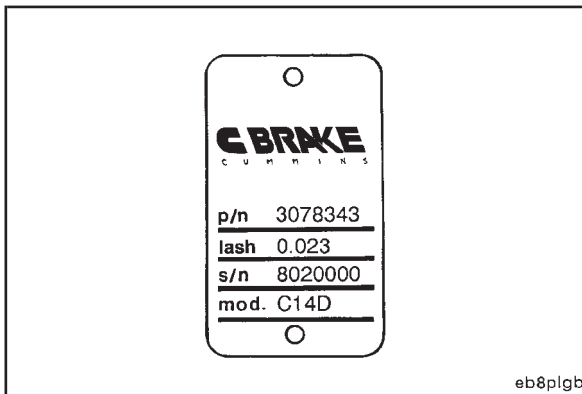


### Electronic Control Module Dataplate

On CELECT™ engines, the electronic control module (ECM) dataplate is located on top of the ECM.

The abbreviations in the accompanying illustration are explained as follows:

- p/n = part number
- s/n = serial number
- d/c = date code



### C-Brake Dataplate

On engines equipped with C-Brakes, the C-Brake dataplate is located on the exhaust side of the C-Brake housing.

N14

## Engine Diagrams

The following drawings contain information about engine components, filter locations, drain points, and access locations for instrumentation and engine controls.

The information and configuration of components shown in these drawings are of a general nature. Some component locations will vary depending on applications and installations.

