



**Specifications Manual
Big Cam IV,
New Big Cam IV,
and 88 Big Cam IV
NT 855 Series Engines**

Copyright© 1989
Cummins Engine Company, Inc.
All rights reserved

Bulletin No. 3810434-00
Printed 3/89

Foreword

This manual contains complete assembly and rebuild specifications for the Big Cam IV, New Big Cam IV, and 88 Big Cam IV engines and all associated components manufactured by Cummins Engine Company, Inc. This manual is intended as a quick reference guide for an experienced technician who is familiar with our product. Various accessory and component suppliers can be contacted directly for any information **not** covered in this manual.

A series of specific Cummins Engine Company, Inc. service manuals (Troubleshooting and Repair, Specifications, Alternative Repair, etc.) are available and can be ordered by filling out and mailing the Literature Order Form located at the end of this manual.

Reporting of errors, omissions, and recommendations for improving this publication by the user is encouraged. Please use the postage paid, self-addressed Literature Survey Form at the end of this manual for communicating your comments.

The latest technology and the highest quality components are used to manufacture the products of Cummins Engine Company, Inc. When replacement parts are needed, we recommend using only genuine Cummins or ReCon® exchange parts. These parts can be identified by the following trademarks:



The specifications in this manual are based on the most current information at the time of publication. Cummins Engine Company, Inc. reserves the right to initiate any changes at any time without obligation. If differences are found between your engine and the information in this manual, contact a Cummins Authorized Repair Location, a Cummins Division Office, or the factory.

CUMMINS ENGINE COMPANY, INC.

Box 3005
Columbus, IN 47202-3005

ATTENTION: NT855 Product Service & Support
Mail Code - 80206

Specifications Manual

Table of Contents

Additional Service Literature	0-73
Air Compressor	
Inspection Specifications.....	0-64
Cam Follower Assembly	
Rebuild Specifications.....	0-45
Fixed Injection Timing	0-45
MVT Injection Timing	0-45
Torque Values.....	0-50
Capscrew Markings and Torque Values	0-71
Capscrew Markings and Torque Values - U.S. Customary	0-71
Cooling System -Torque Values	0-60
Cylinder Block	
Rebuild Specifications.....	0-29
Torque Values.....	0-37
Cylinder Head	
Rebuild Specifications.....	0-38
Torque Values.....	0-42
Decimal and Metric Conversion Factors	0-69
Drive Belt Tension Specifications	0-67
Engine Assembly	
Capscrew Torque Values	0-14
Specifications.....	0-9
Engine Diagrams	0-2
Engine Identification	0-1
Engine Testing	
Test Specifications.....	0-65
Fan Hub	
Inspection Specifications.....	0-57
Fuel Pump	
Rebuild Specifications.....	0-51
Fuel Pump and Compressor Drive	
Rebuild Specifications.....	0-62
Torque Values.....	0-63
General Engine Specifications	0-5
Cooling System.....	0-6
Electrical System	0-6
Exhaust System	0-6
Fuel System.....	0-6
General Engine Data	0-5
Intake System	0-5
Lubrication System	0-5
Injection Timing Codes	0-66
Injectors	
Rebuild Specifications.....	0-51
Lubricating Oil Pump	
Inspection Specifications.....	0-52
Lubricating Oil System	
Capacities	0-52
Torque Values.....	0-54
Newton-Meter to Foot-Pound Conversion Chart	0-70
Pipe Plug Torque Values	0-72

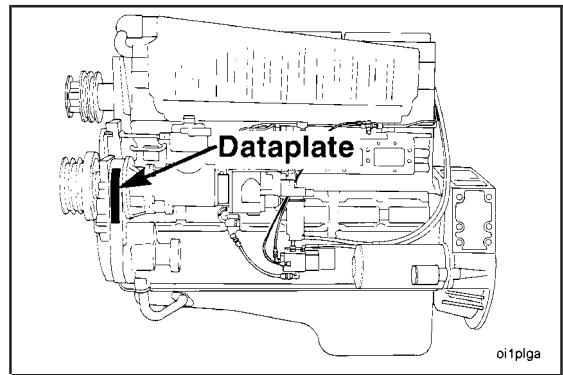
Rocker Lever Housing Assembly	
Rebuild Specifications.....	0-43
Torque Values.....	0-44
Service Literature Ordering Location	0-74
Specifications	
General Information	0-4
Thermostat Housing Assembly	
Rebuild Specifications.....	0-58
Thermostat (Reserve Flow Cooling)	
Operating Temperature	0-59
Turbocharger	
Inspection Specifications.....	0-64
Valve and Injector Adjustments*	0-7
Crosshead Adjustment.....	0-7
Cummins Engine Brake	0-7
Injector Preload (Top Stop)	0-7
Jacobs® Engine Brake.....	0-7
Valves.....	0-7
Vehicle Braking	
Rebuild Specifications.....	0-65
Water Pump Assembly	
Rebuild Specifications.....	0-56
Weights and Measures	
Conversion Factors	0-68

Engine Identification

The engine dataplate provides the model identification and other important information about the engine.

Have the following engine data available when communicating with a Cummins Authorized Repair Location. The information on the dataplate is **mandatory** when sourcing service parts:

1. Engine Serial Number (E.S.N.)
2. Control Parts List (CPL)
3. Model
4. Horsepower and RPM Rating

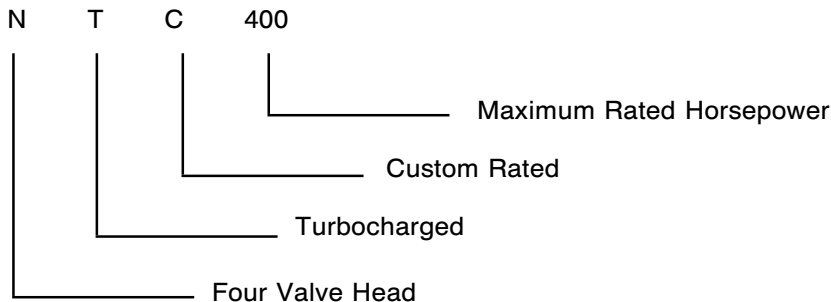


Engine No.	S.O. No.		E.C.S.				VEHICLE EMISSION CONTROL INFORMATION: This engine conforms to U.S. EPA and the CARB regulations applicable to Model Year New Heavy-Duty Engines. This engine has a primary intended service application as a heavy heavy-duty diesel engine.
Model	Ref. No.		Injection timing code				
Advertised HP at RPM	Engine Cert. Ident.	C.I.D.	Family	CPL	Injector torque	Inch-Lbs.	Idle Speed RPM
Conf. No.	Warranty start date				Injector travel	Inch	
Date of mfg.					Valve lash cold	Int. Exh.	WARNING injury may result and warranty is voided if fuel rate, RPM or altitudes exceed published maximum values for this model and application.
Manufactured by Cummins Engine Company, Inc., U.S.A. 3045550					Fuel rate at advertised HP	mm ³ stroke	

Engine No.	S.O. No.		E.C.S.				VEHICLE EMISSION CONTROL INFORMATION: This engine conforms to U.S. EPA regulations applicable to Model Year New Heavy-Duty Engines. This engine has a primary intended service application as a heavy heavy-duty diesel engine.
Model	Ref. No.		Injection timing code				
Advertised HP at RPM	Engine Cert. Ident.	C.I.D.	Family	CPL	Injector torque	Inch-Lbs.	Idle Speed RPM
Conf. No.	Warranty start date				Injector travel	Inch	
Date of mfg.					Valve lash cold	Int. Exh.	WARNING injury may result and warranty is voided if fuel rate, RPM or altitudes exceed published maximum values for this model and application.
Manufactured by Cummins Engine Company, Inc., U.S.A. 3045551					Fuel rate at advertised HP	mm ³ stroke	

ap8plgg

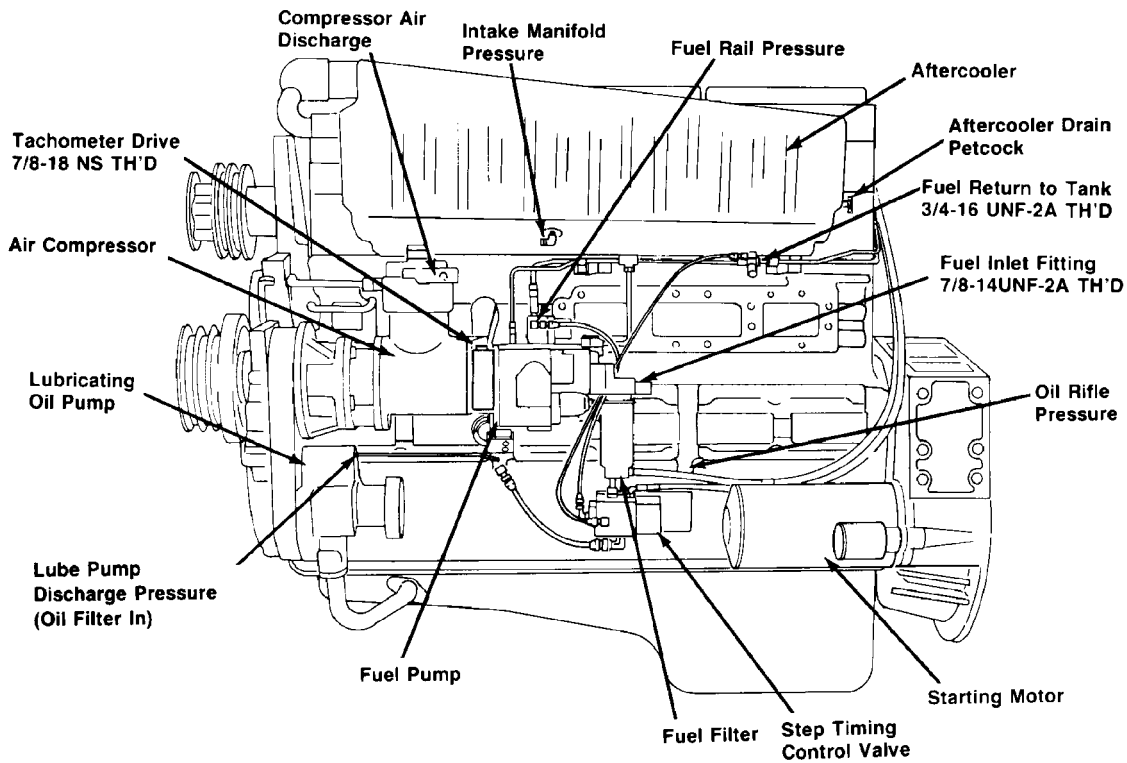
The model name provides the following engine data:



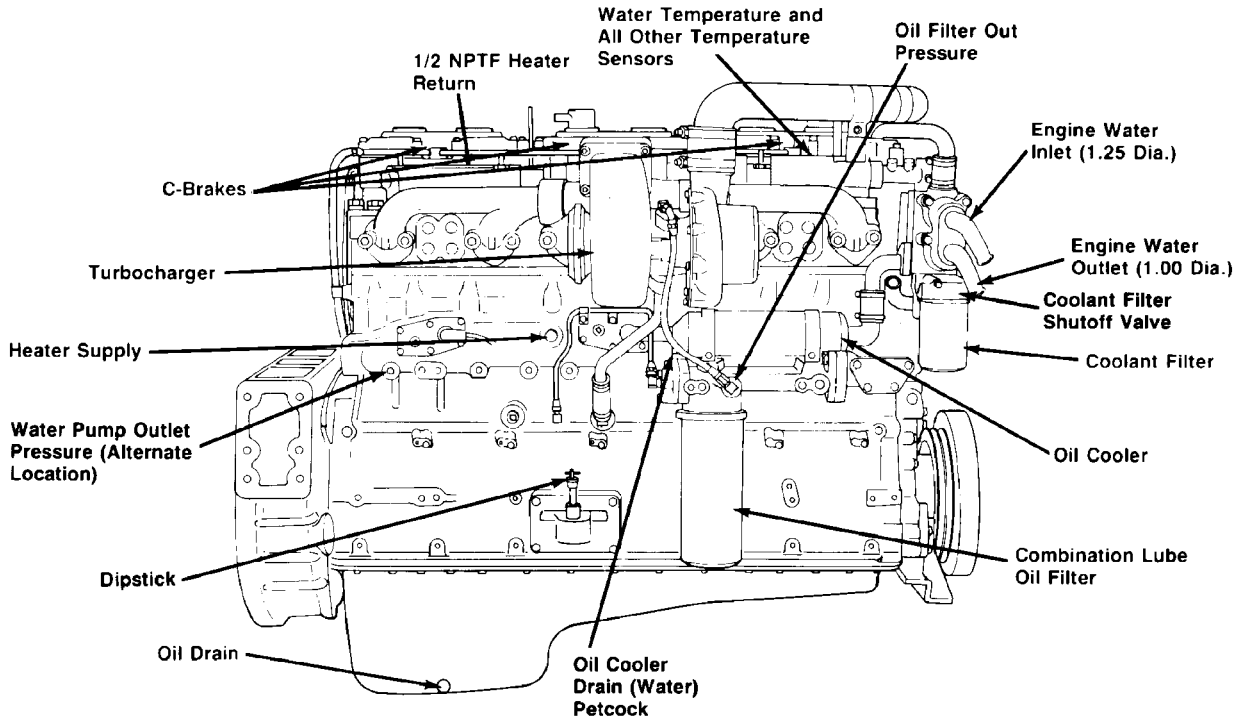
Engine Diagrams

The following drawings contain information about engine components, filter locations, drain points, and access locations for instrumentation and engine controls.

The information and configuration of components shown in these drawings are of a general nature. Some component locations will vary depending on applications and installations.



ew1bdgc



ew1bdgd

Specifications - General Information

The specifications in this manual are organized in the same sequence as the Big Cam IV, New Big Cam IV, and 88 Big Cam IV NT855 Series Engines Shop Manual, Bulletin No. 3810395-00. The **minimum** and **maximum** tolerance limit specifications are listed in both **metric** and **U.S. Customary** dimensions. The metric dimension is given first, followed by the U.S. Customary dimension in brackets; for example: 0.50 mm [0.020 inch]. The assembly and rebuild specifications and torque values are provided to make sure the parts are assembled correctly, fit properly, and are secured with the correct torque value.

All capscrews used on the NT engine are U.S. Customary. Capscrew torque values are listed in newton meters and foot pounds, unless otherwise specified. If a torque value is **not** listed, use the standard torque value for the capscrew. Refer to the Table of Contents, Capscrew Markings and Torque Values, in this manual.