

**2005-2008**

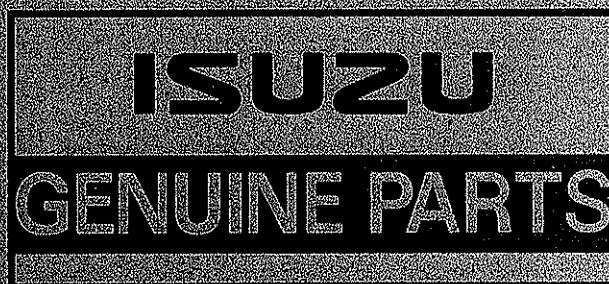
# **PARTS CATALOG**

---

**DIESEL ENGINE**

**6WG1 (COMMON RAIL)**

---



**PART NO. 1-8871-1008-5**

## パーツカタログのご使用について /How to use Parts Catalog

1. このパーツカタログには、収録型式一覧表に記載されているエンジン型式の補修用部品を収録してあります。
2. このパーツカタログには、2008年3月現在の品番情報を収録してあります。
3. いすゞエンジンの整備には「いすゞ純正部品」をご使用ください。

1. This parts catalog contains the service parts information for the engine models listed on the "Engine Models Table".
2. This parts catalog contains the service parts information as of March, 2008. The part numbers are subject to change without notice.
3. In order to maintain the high quality of Isuzu engines, use of Genuine Isuzu Parts is recommended wherever and whenever service, maintenance or repairs are required.

### 目 次 /Contents

<b>1</b>	品番検索の手順	How to search for the Part Number	P-2
<b>2</b>	収録型式一覧表	Engine Models Table	P-4
<b>3</b>	IDプレートの見方	How to refer to ID Plate	P-6
<b>4</b>	パーツカタログの見方	How to refer to the Parts Catalog	P-7
<b>5</b>	略語表	Abbreviation List	P-14
	部品名称順索引	ALPHABETICAL INDEX	P-1 ~ P-8
	FIG NO. 索引	FIGURE NUMBER INDEX	P-1 ~ P-3
	イラスト索引	ILLUSTRATION INDEX	P-1 ~ P-16
	イラスト・テキスト編	ILLUSTRATION AND TEXT	P-1 ~ P-154
	部品番号順索引	NUMERICAL INDEX	P-1 ~ P-7





## 2 収録型式一覧表

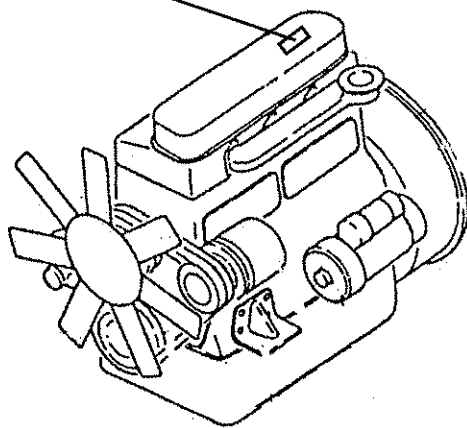
△；当該型式生産終了

エンジン型式	6WG1													
	XYBW01	XYGD01	XYSA01	XYSA02	XYSA03	XYSS01	XYSS02							
2005-				○	○	○		○	○					
2006-	○													
2007-		○												
年別														
日立建機				○	○	○								
住友建機								○	○					
ISUZU AMERICA	○													
デンヨー		○												
納入先														
用途	一般動力用	発電機 400KVA		油圧ショベル ZX450-3	油圧ショベル ZX650-3	油圧ショベル ZX850-3		油圧ショベル SH700LHD-3B	油圧ショベル SH800LHD-3B					

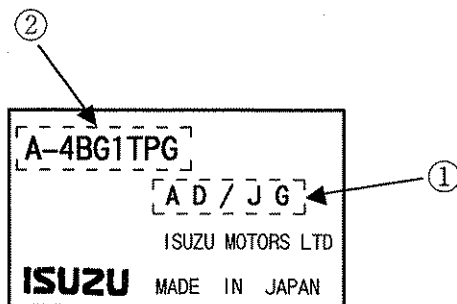


### 3 IDプレートの見方/How to refer to ID Plate

IDプレート/ID Plate



パーツカタログ/Parts Catalog



0-15 A		CRANKSHAFT, PISTON AND FLYWHEEL															
FIG-NO.																	
KEY NO.	PART NAME																
PART NUMBER	I T C	APPLIED DATE	L R	O T R	4BG1												Remarks
					P P P	P P P	P P P	P P P	P P P	P P P	P P P	P P P	P P P	P P P	P P P	P P P	
1	CRANKSHAFT																
894375-1610		9111-			A												
894365-7450		8911-			I	B											
894339-8950		8911-			I	B											
7	METAL KIT; CRANKSHAFT, STANDARD																
894117-0322		8911-			I	A	B	C									
894117-0322		A			I	A	B	C									
897071-6810		9604-			I												
12	FLYWHEEL																
894321-12921		8911-			I	A											
112330-36961		8911-			I	B											
894426-75421		8911-			I	B											
512330-0613		8911-			I	B											
897106-9891		8911-			I	B											
894149-89391		8911-			I	B											
512330-21921		8911-			I	B											
897046-1810		8911-			I	B											
897135-0370		8911-			I	B											
897135-0370		B			I	B											
897046-1810		9708-			I	B											
15	BUSHING; TAPER, CR/SKF PULLEY																
512379-0141		8911-			I	B	C										

① 完成年月 : IDプレートはアルファベット、パーツカタログ上は西暦で表示してあります。

(例) AD/JG → 03月/96年

② エンジン型式名称 : 個別の型式名称が表示されます。

(例1) A-4BG1TPG → TPG

(例2) UF4BG1TPG → TPG(UF)

① Applied Date: Indicated in alphabetical character on the ID Plate.

(A=0, B=1, C=2, D=3, etc.).

For example:

March '96

A D / J G

(Month/Year)

0 3 / 9 6

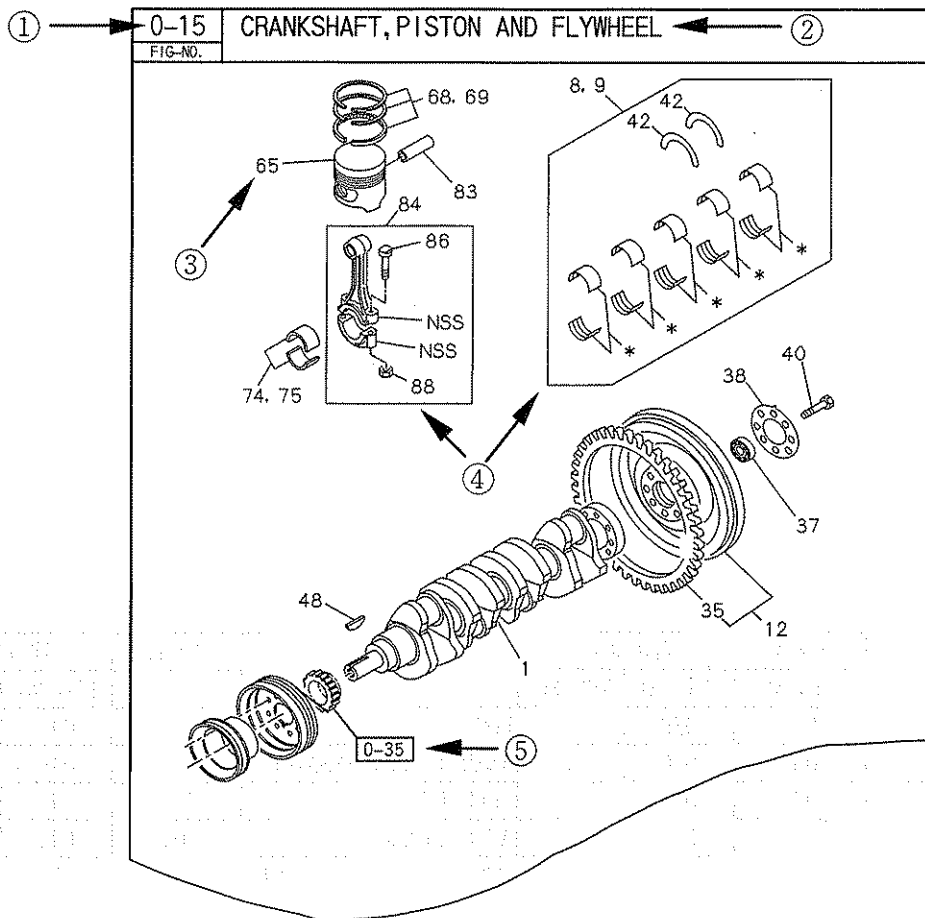
② Engine Model Name: Individual model is indicated.

For example 1: A-4BG1TPG → TPG

For example 2: UF4BG1TPG → TPG(UF)

## 4 パーツカタログの見方

### 1. イラストの見方



#### ① FIG NO.

装置別に分類したイラストの番号で、それぞれのイラストにつけられています。

・FIG NO. の1～3桁は、装置別の分類コードを示します。

・装置種類別にFIG NO. を分類した場合、4桁目にアルファベットで表示します。

(例) 0-10A

#### ② イラストのタイトル

それぞれのイラストの収録される部品の総称、又は代表を表示します。

イラストを複数に分割した場合、区別する為に、2行目に、エンジン型式、ミッション型式、装置名称等で表示されます。

#### ③ KEY NO.

イラストの部品と、テキストの部品を結び付ける役目をします。なお、NSSと表示がある部品は、非売品です。

#### ④ 親・子の表示

部品の親(アセンブリ)と子(その構成部品)の関係を表現するもので、イラスト上でのみ表現されます。

(例1) KEY NO. 84は86/88及びNSS(コンロット、キャップは単品非補給)を含むことを示しています。

(例2) KEY NO. 8/9は42、及び\*印(単品非補給、キットの内容品)を含むことを示しています。

#### ⑤ SEE FIGの表示

関連部品が別のFIGのイラストに記載される場合、記載されるFIG NO. を枠線で囲い表示します。



## 2. テキストの見方

テキストには一般部品のテキストと特定品目の内容部品のテキストがあります。

(一般部品)

(特定品目の内容部品)

0-10 A CYLINDER HEAD COVER													
0-65 STARTER													
KEY NO.	PART NAME	APPLIED DATE	L	R	A	B	C	D	E	F	G	H	Remarks
1	COVER; CYL HD	9311-											
(A)	51170-2872	9311-											
(A)	51170-2381	9311-											
(B)	894365-0971	9311-											
(C)	894365-0311	9311-											
(D)	894365-0320	9311-											
4	CAP; OIL FILLER	9311-											
(A)	511751-0261	9311-											
(A)	894220-1510	9311-											
(B)	894123-2075	9311-											
5	GASKET; OIL FILLER	9311-											
(A)	511751-0261	9311-											
(A)	894220-1510	9311-											
(B)	894123-2075	9311-											
27	GASKET; HO COVER	9311-											
(A)	51170-0300	9311-											
(A)	51170-0300	9311-											
34	BUSHING; MFG RUBBER, CYL HD COVER	9311-											
(A)	51170-0300	9311-											
(A)	51170-0300	9311-											
40	COVER	9311-											
(A)	894365-0330	9311-											

《特定品目一覧表》

品 目	内容品			品 目	親品番の		
	FIG NO.	FIG NO.	KEY NO.		FIG NO.	FIG NO.	KEY NO.
TURBOCHARGER	037	036	1	BOOST COMPENSATOR	082	040	1
STARTER	065	060	1	ANEROID COMPENSATOR	083	040	1
GENERATOR	066	060	2	FEED PUMP	084	040	1
INJECTION PUMP	080	040	1	AUTO TIMER	085	040	1
GOVERNOR	081	040	1	POWER STEERING OIL PUMP	442	436	1

### ① FIG NO.

イラストの見方の項参照

同一FIG内でモデル(ASM)数が50を越える場合、50モデル(ASM)毎に改頁し4桁目にアルファベットをつけて区別します。この場合、イラストは共通のものを使います。

(例) 0-10A, 0-10B

### ② タイトル

イラストの見方の項参照

### ③ KEY NO.

イラストの部品と、テキストの部品を結び付ける役目をします。尚、並びは若い番号順に記載されます。

FIG NO.とKEY NO.を組み合わせると品目が特定されます。

例えば、『FIG NO.=0-10 KEY NO.=1』はCOVER;CYL HDを意味し、これは全てのパーツカタログに共通です。従って、KEY NO.は必ずしも連続しません。

### ④ 部品名称

部品の名称を表わします。表示の並びは呼び名が先で、次に取り付け位置等を示す補足説明を表示しています。

(例) COVER ; CYLINDER HEAD

呼び名

取り付け位置

尚、補足説明以降に略語を使う場合がありますが、その際は後述の『略語表』を参照ください。

## ⑤ 部品番号

それぞれの部品の該当番号が表示されます。部品の注文は全てこの番号でお受けします。

## ⑥ 互換性

次の行の品番と互換性がある場合に記号で表示します。特定品目の内容品の場合には、同じASM品番の中で、変更になった品番にのみ表示します。

A；新旧部品、どちらにも代替え使用できます。（新 ⇄ 旧）

C；新部品は、旧部品に代替え使用できます。（新 → 旧）

## ⑦ 切換年月

該当部品の車両生産切り換え開始時期、又は終了時期を西暦年月で表示してあります。

## ⑧ 左、右

フライホイール側から見て左側を“L”、右側を“R”で表示します。

## ⑨ 数量

・一般部品は当該取付け位置でのエンジン1台当りの使用数を示しています。

・特定品目の内容部品はASM(アセンブリ)1個当たりの使用数を示しています。

尚、修理時に必要に応じて数を選択して使用する場合は“AR”と表示してあります。

## ⑩ 適用モデル

部品が適用される型式名称を表示します。

## ⑪ 特記事項

適用モデル、仕様条件だけでは部品の区別が出来ない場合、部品の特性（寸法、形状、色、材質）を表示します。

## ⑫ イラスト特記事項

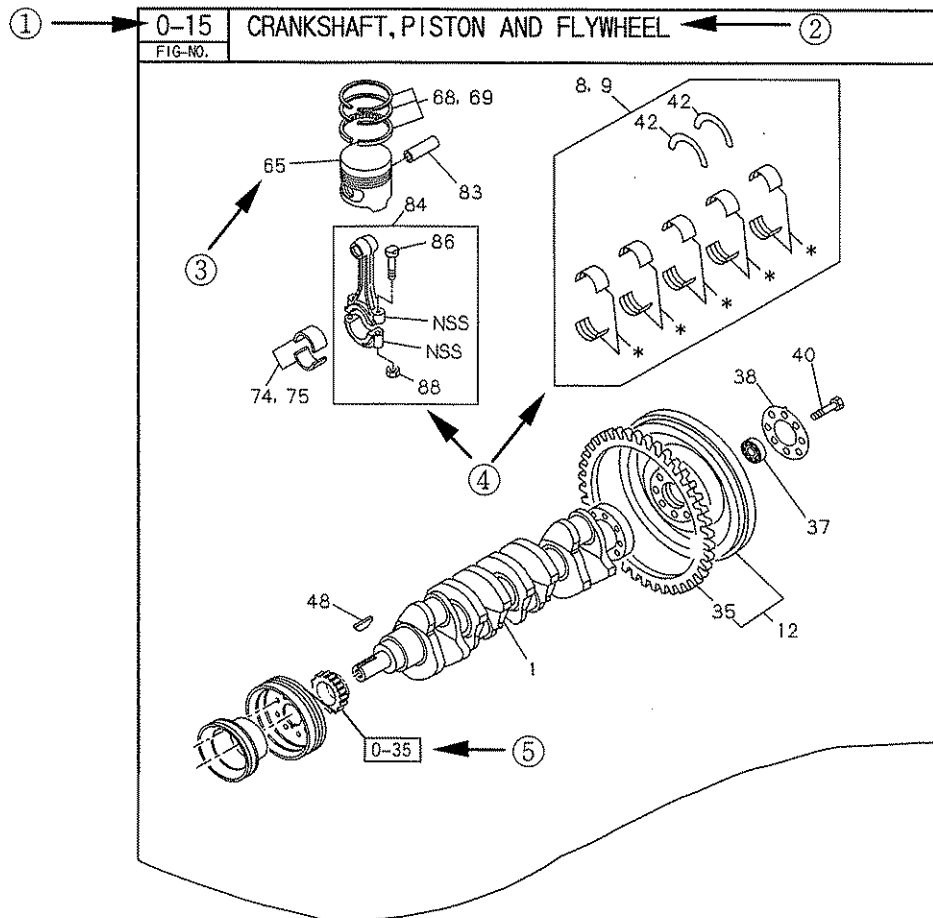
部品の取付け位置を明示する為に、(A)、(B)、(C)……と表示します。

## ⑬ ASM部品番号

特定品目のASM(アセンブリ)番号が表示されます。

# 4 How to refer to the Parts Catalog

## 1. How to interpret the illustration



### ① FIG NO.

A 3-digit (X-XX) Figure Number has been assigned to every section/illustration of the catalog.

The first digit of the Figure Number identifies the primary catalog section.

And the second and third digits identify the subsections.

EXAMPLE: 0-15 = Engine (0); Crankshaft, Piston and Flywheel (15).

If the chapter contains more than one section, each section is identified with an alphabetical character.

EXAMPLE: 0-15A, 0-15B, 0-15C, etc.

### ② ILLUSTRATION TITLE

The first line of the title contains a generic name(s) for the item(s) illustrated.

The second line of the title identifies the specific application; i.e. engine model, type of transmission, etc.

### ③ KEY NUMBER

The Key Number connects the illustrated part to the appropriate text.

Items identified with a "NSS" (Not Serviced Separately) are not available individually, however, they may be available as part of an assembly.

#### ④ ASSEMBLIES, KITS, SETS AND THEIR COMPONENTS

Assemblies, Kits and/or Sets are shown within a frame/box. Also shown within the frame/box are any components included with the assembly, Kit or Set.

EXAMPLE: Key No.84 includes Key No.86/88 and the connecting Rod and Cap which are notsupplied individually.

EXAMPLE: Key No.8/9 includes Key No.42 and those items identified with an asterisk(\*). Items identified with no key number may only be available in an assembly, Kit or Set.

#### ⑤ SEE FIG NO.

Items shown as a point of reference are not identified with a Key Number. These items are shown because of the way they fit within the illustration. They are described in more detail in another section of the Catalog.

The applicable catalog section is shown next to the illustration.

## 2. How to interpret the Text

There are two different styles of text. One is used to identify general parts and the other identifies the components of a particular assembly.

(General Parts)

(Component parts for a particular ASM)

①

0-10 A		CYLINDER HEAD COVER		②
KEY NO	PART NAME			
1	COVER: CYL HD	HD		
(A)	511170-2672	0311-		
(A)	511170-2281	0311-		
(B)	894365-0271	0311-		
(C)	894365-0311	0311-		
(D)	894365-0320	0311-		
4	CAP: OIL FILLER			
(A)	8911751-0381	0311-		
(A)	894230-1510	0311-		
(B)	894133-2075	0311-		
5	GASKET: OIL FILLER			
	894123-6231	0311-		
27	GASKET: HD COVER			
	911179-0300	0311-		
	911179-0300	0311-		
34	BUSHING: MTS RUBBER, CYL HD COVER			
	894140-4271	0311-		
40	COVER			
	894365-0320	0311-		

0-65 STARTER

KEY NO	PART NAME			
1	SEAL KIT: STARTER			
(C)	894418-8521	0311-		
	897044-3770	0311-		
	181129-4362	0311-		
	181129-3954	0311-		
	181129-7183	0311-		
	181129-5013	0311-		
2	CASE: PINTON STARTER			
	894418-8521	0311-		
	897044-3674	0311-		
	181129-0252	0311-		
	181113-0352	0311-		
	181113-0922	0311-		
	181113-0210	0311-		

<List of the particular assembly>

DESCRIPTION	COMPONENTS			ASSEMBLY PART			DESCRIPTION	COMPONENTS			ASSEMBLY PART		
	FIG NO.	FIG NO.	KEY NO.	FIG NO.	FIG NO.	KEY NO.		FIG NO.	FIG NO.	KEY NO.	FIG NO.	FIG NO.	KEY NO.
TURBOCHARGER	037	036	1	BOOST COMPENSATOR	082	040	1						
STARTER	065	060	1	ANEROID COMPENSATOR	083	040	1						
GENERATOR	066	060	2	FEED PUMP	084	040	1						
INJECTION PUMP	080	040	1	AUTO TIMER	085	040	1						
GOVERNOR	081	040	1	POWER STEERING OIL PUMP	442	436	1						

#### ① FIG NO.

Already explained on a previous page.

In the same Fig no., when more than 50 engine models or assembly part numbers exist, new texts with new Fig no. with alphabetical suffix as shown below is newly added.

(Number of column is limited under 50 items) However, illustration is not newly added.

(Fig no. for text: 0-10A,0-10B -----)

**② TITLE**

Already explained on a previous page.

**③ KEY NUMBER**

The combination of the Figure Number and Key Number identifies a particular part. For example, Figure Number 0-10 and Key Number 1 combines to identify "COVER;HEAD". This combination of the Figure Number and Key Number (i.e. 0-10-1) will be used to identify the "COVER;HEAD". in all parts catalogs. Key Numbers, therefore, may not be listed consecutively.

**④ DESCRIPTION**

The actual description of the part is listed first then the location of the part.

EXAMPLE:     Cover ; Cylinder Head  
                  Name            Location

**⑤ PART NUMBER**

Used to identify a specific part.

**⑥ INTERCHANGEABILITY**

Superseding part numbers are listed directly below the old part number. An alphabetical character; i.e. "A" or "C", is used to indicate the type of interchangeability that exists between the old and new part number. If an alphabetical character is not shown then these part numbers are not interchangeable.

EXAMPLE:                    Part No.                    ITC  
(Old)                        · -001-0                    C                    [001-0 is replaced by 002-0 with the  
(New)                        · -002-0   interchangeability of "C"]

"A" = Totally interchangeable. Either part number may be used.

"C" = The new part number will replace the old part number, however, the old part number will not replace the new part number.

**⑦ APPLICABLE PERIOD**

Indicated by the year and month (i.e. 9202 = February 1992).

**⑧ SIDE**

Indicated whether the item is installed on the left or right side of the engine as viewed from Flywheel.

**⑨ QUANTITY**

The quantity of the part per that particular application for one engine is indicated. As to the component of a particular Assembly, the quantity per one assembly is indicated. In those cases where the required quantity is unknown (i.e. shims), "AR" (As required) will be indicated.

**⑩ APPLICABLE MODEL**

The engine model to which the item is applicable will be indicated.

**⑪ REMARKS**

Any additional information pertaining to the characteristics of the item; i.e. size, shape, color, Engine No. etc. will be listed in the Remarks Column.

**⑫ ILLUSTRATION REMARKS**

When two or more items are identified by the same Key Number, an alphabetical character (i.e. "A", "B", "C", etc) will be used to identify the part number to the applicable illustration.

**⑬ ASSEMBLY [ASM] PART NUMBER**

Assembly part number will be indicated.

## 5 略語表 / Abbreviation List

略語 ABBREVIATIONS	語源 DEFINITION	略語 ABBREVIATIONS	語源 DEFINITION
A	AMPERE	KOYO	KOYO SEIKO CO.
ACCEL	ACCELERATOR	KW	KILOWATT
ACL	AIR CLEANER	L	LITER
ADJ	ADJUSTER	L1=	LENGTH (VERTICAL)
AL	ALUMINUM	L2=	LENGTH (SIDE)
A/R	AS REQUIRED	L=	LENGTH
ASM	ASSEMBLY	LH	LEFT HAND
AUTO	AUTOMATIC	LK	LOCK
B=	BREADTH	LVR	LEVER
BRG	BEARING	LWR	LOWER
BRK	BRAKE	MAN	MANUAL
BRKT	BRACKET	MANIF	MANIFOLD
CAC	CHARGE AIR COOLER	MTG	MOUNTING
C/BL	CYLINDER BLOCK	M/T	MANUAL TRANSMISSION
CLU	CLUTCH	MM	MILLIMETER
CMPR	COMPRESSOR	NACHI	FUJIKOSHI CO.
COMB	COMBINATION	NGK	NIHON TOKUSHU TOGYO CO.
COMPL	COMPLETE	NO.	NUMBER
CONN	CONNECTING	NOK	NOK CO.
CONT	CONTROL	NOS	NIHON OIL SEAL CO.
CVR	COVER	NPN	NO PART NUMBER
CYL	CYLINDER	NPR	NIPPON PISTON RING CO.
D=	DIAMETER	NSG	NIPPON SHEET GLASS CO.
DC	DIRECT CURRENT	NSS	NOT SERVICED SEPARATELY
DIAPH	DIAPHRAGM	NSK	NIHON SEIKO CO.
DIFF	DIFFERENTIAL	NTN	TOYO BEARING CO.
EGR	EXHAUST GAS RECIRCULATION	OD	OUTSIDE DIAMETER
ENG	ENGINE	OPT	OPTION
EXC	EXCEPT	OVS1	OVERSIZE
EXH	EXHAUST	PCV	POSITIVE CRANK CASE VENTILATION
E #	ENGINE NUMBER	PL	PLAIN
EXP	EXPORT	PRE-CHAMBER	PRECOMBUSTION CHAMBER
FIG NO.	FIGURE NUMBER	PROP	PROPELLER
FLEX	FLEXIBLE	P/S	POWER STEERING
FRT	FRONT	PTO	POWER TAKE OFF
FWD	FORWARD	QOS	QUICK ON START
G	GRAM	QTY	QUANTITY
GEN	GENERATOR	QUAD	QUADRANT
GOV	GOVERNOR	RAD	RADIATOR
GRD=	GRADE	REG	REGULATOR
G/RATIO	GEAR RATIO	RET	RETAINER
H=	HEIGH	REV	REVERSE
HD	HEAD	RH	RIGHT HAND
HEX	HEXAGON	RR	REAR
HSG	HOUSING	RWD	REARWARD
ID=	INSIDE DIAMETER	SPD	SPEED
IGN	IGNITION	SPR	SPRING
INCL	INCLUDING	STD	STANDARD
INJ	INJECTION	SW	SWITCH
INL	INLET	SYN	SYNCHRONIZER
ISC	IDLE SPEED CONTROL	T=	THICKNESS
JBK	JIDOSHA BUHIN KOGYO CO.	TAP	TAPPING
KG	KILOGRAM	TC	TURBOCHARGER
KM/H	KILOMETER PER HOUR		

略語 ABBREVIATIONS	語源 DEFINITION	略語 ABBREVIATIONS	語源 DEFINITION
TICS	TIMING INJECTION CONTROL SYSTEM		
TEMP	TEMPERATURE		
TRANS	TRANSMISSION		
UNSI	UNDER SIZE		
UPR	UPPER		
V	VOLT		
VAC	VACUUM		
VLV	VALVE		
W	WATT		
W/	WITH		
WO/	WITHOUT		
Z=	TEETH		
ZN	ZINC		
&	AND		
"	INCH		
#	NUMBER		
1ST	FIRST		
2ND	SECOND		
3RD	THIRD		
4TH	FOURTH		
5TH	FIFTH		
6TH	SIXTH		
7TH	SEVENTH		
8TH	EIGHTH		
9TH	NINTH		



(

(

(

(

# ALPHABETICAL INDEX

## ALPHABETICAL INDEX

### ADAPTER - BOLT; HARNESS

PART NAME	FIG	KEY	PAGE	PART NAME	FIG	KEY	PAGE
ADAPTER	0-31	287	58		0-52	205	116
ADAPTER; COUPLING	0-40	435	93		8-15	150	151
ADAPTER; FAN TO PULLEY	0-33	032	68	BOLT; CLIP, FUEL PIPE	0-42	126	100
ADAPTER; FUEL LEAK OFF	0-40	284	92	BOLT; CLIP, INJ PIPE	0-40	119	91
ADAPTER; OIL FILTER	0-50	352	107	BOLT; CLIP, OIL PIPE	0-52	044	115
ADAPTER; OIL PRESSURE SWITCH	0-12	122	15	BOLT; CM/SHF GEAR	0-14	007	24
ARM; ROCKER	0-14	078	25	BOLT; COMMON RAIL	0-40	283	92
ARMATURE; STARTER	0-65	016	131	BOLT; CONNECTOR	0-60	836	127
BALL; OIL RELIEF VLV	0-51	041	111	BOLT; CONNROD	0-15	086	30
BALL; PINION, STARTER	0-65	048	132	BOLT; COUPLING FIX, INJ PUMP	0-87	002	139
BAND; "V", TURBOCHARGER TO EXH PIPE	0-36	214	75	BOLT; COUPLING TO INJ PUMP	0-87	020	139
BEARING; ARMATURE, STARTER	0-65	017	131	BOLT; COVER	0-15	115	30
BEARING; BALL, FAN PULLEY	0-33	131	70		0-20	480	37
BEARING; FLYWHEEL PTO	0-90	006	141		0-50	503	108
BEARING; IDLE PULLEY	0-33	224	71		0-90	061	141
BEARING; JOURNAL, TURBOCHARGER	0-37	014	79		0-90	075	141
BEARING; PILOT, TOP GEAR SHAFT	0-15	037	29	BOLT; COVER FIX	0-39	038	85
BEARING; ROTOR, GEN	0-66	003	136	BOLT; COVER NOISE SHIELD	0-13	131	21
BEARING; STARTER	0-65	128	132	BOLT; COVER, OIL PORT	0-50	324	107
BEARING; THRUST, TURBOCHARGER	0-37	015	79	BOLT; COVER, OIL PUMP	0-51	007	111
BEARING; WATER PUMP	0-30	010	53	BOLT; CR/SHF PULLEY	0-15	058	30
BELT; COOLING FAN	0-33	036	68	BOLT; CRANKCASE	0-12	211	15
BELT; GEN DRIVE	0-33	185	71		0-12	211	16
BLOCK ASM; CYL	0-12	001	15	BOLT; CYL HD TO BLOCK	0-11	003	10
BODY; CASE, OIL COOLER	0-50	110	105	BOLT; DAMPER	0-15	024	29
BODY; FAN CENTER	0-33	115	69	BOLT; DUCT, EGR	0-57	767	120
BODY; OIL FILTER, PARTIAL	0-50	390	107	BOLT; EGR VLV	0-57	002	119
BOLT	0-25	094	42	BOLT; ENG FOOT	0-22	020	39
	0-57	270	119	BOLT; ENG HANGER	0-11	041	11
BOLT SET; GEN	0-66	127	137	BOLT; EXH PIPE	0-36	317	75
BOLT; ADAPTER	0-40	436	93	BOLT; EYE	0-25	363	42
BOLT; ADJ	0-33	086	69		0-31	266	58
BOLT; ADJ PLATE, GEN	0-33	071	68		0-40	216	92
BOLT; AIR BREATHER	0-28	091	50		0-42	264	101
BOLT; AIR CMPR FIX	0-38	005	83	BOLT; EYE LEAK OFF PIPE	0-40	124	91
BOLT; AIR DUCT	0-36	076	75	BOLT; EYE, FEED PUMP	0-40	176	92
BOLT; BRACKET	0-52	146	116	BOLT; EYE, FUEL OUTLET, FEED PUMP	0-40	174	91
BOLT; BRKT	0-14	075	25	BOLT; EYE, FUEL PIPE	0-42	191	101
	0-28	188	51		0-42	256	101
	0-33	182	70	BOLT; EYE, OIL INLET	0-40	365	92
	0-40	071	91	BOLT; EYE, OIL OUTLET	0-40	366	92
	0-41	043	97	BOLT; EYE, OIL PIPE	0-52	002	115
	0-42	148	100	BOLT; FAN CENTER	0-33	329	71
	0-52	404	116	BOLT; FLANGE	0-90	019	141
	0-57	271	119	BOLT; FLYWHEEL	0-15	040	29
	0-57	472	119	BOLT; FUEL FILTER	0-41	042	97
	8-15	139	151	BOLT; GEAR BOX	0-20	252	36
BOLT; BRKT FIX	0-25	139	42	BOLT; GEAR CASE	0-20	036	34
	0-38	176	83	BOLT; GEAR CASE COVER	0-20	051	34
BOLT; BRKT, OIL SEPARATOR	0-28	263	51		0-20	051	35
BOLT; CASE	0-11	182	11	BOLT; GEAR TO SHAFT	0-38	020	83
BOLT; CENTER, OIL FILTER	0-50	284	106	BOLT; GEN	0-60	016	125
BOLT; CLAMP NOZZLE HOLDER	0-40	061	90	BOLT; GEN BRKT	0-60	026	125
BOLT; CLIP	0-31	085	57	BOLT; GUIDE TUBE	0-13	010	20
	0-32	031	62	BOLT; HARNESS	0-60	101	125

**ALPHABETICAL INDEX**

BOLT; HD COVER - CLIP; RUBBER H

PART NAME	FIG	KEY	PAGE	PART NAME	FIG	KEY	PAGE
BOLT; HD COVER	0-10	028	7	BOLT; HD COVER	0-33	133	70
BOLT; HSG	0-20	211	36	BRACKET; INJ PIPE CLIP	0-40	069	91
	0-31	012	57	BRACKET; INJ PUMP TO C/BL	0-40	006	90
BOLT; IDLE PULLEY	0-33	221	71	BRACKET; INL PIPE	0-25	344	42
BOLT; INJ PUMP	0-40	002	90	BRACKET; OIL PIPE	0-52	157	116
				BRACKET; OIL SEPARATOR	0-28	262	51
BOLT; INJ PUMP BRKT	0-40	007	90	BRACKET; OIL STRAINER	0-51	060	111
BOLT; JOINT, FUEL FILTER	0-42	108	100	BRACKET; ROCKER SHAFT, FRT	0-14	058	24
	0-42	112	100	BRACKET; ROCKER SHAFT, INTER	0-14	084	25
BOLT; JOINT, OIL JET, PISTON COOLING	0-12	046	15	BRACKET; ROCKER SHAFT, RR	0-14	097	25
BOLT; JOINT, THERMOSTAT	0-50	199	106				
				BRACKET; WATER PIPE	0-32	024	62
BOLT; MTG	0-27	131	46	BRACKET; GUIDE TUBE	0-13	012	20
BOLT; OIL COOLER	0-50	103	105	BREATHER; AIR	0-28	001	50
BOLT; OIL FILLER	0-52	449	116	BRIDGE	0-14	063	24
BOLT; OIL FILTER	0-50	076	105	BRUSH ASM; STARTER	0-65	095	132
BOLT; OIL PAN	0-13	023	20				
				BUSHING; CONNROD	0-15	085	30
BOLT; OIL PIPE	0-52	040	115	BUSHING; IDLE GEAR	0-11	257	12
BOLT; OIL PUMP	0-51	029	111				
BOLT; OIL STRAINER	0-51	061	111				
BOLT; OUTLET PIPE	0-31	050	57	CABLE; STARTER EARTH	0-60	293	126
BOLT; PIPE	0-25	568	43	CAMSHAFT	0-14	001	24
	0-28	048	50	CAP; ADJ SCREW	0-14	212	25
	0-57	058	119	CAP; FUEL FILTER	0-41	092	97
BOLT; PIPE CLIP, VENTILATOR	0-28	084	50	CAP; INT	0-25	801	43
BOLT; PLATE	0-33	079	69	CAP; OIL FILLER	0-10	004	7
BOLT; PLATE TO COUPLING, INJ PUMP	0-87	009	139		0-13	277	21
BOLT; PLATE TO CROSS COUPLING, TIME	0-87	014	139	CAP; OIL PAN DRAIN PIPE	0-13	271	21
BOLT; POINTER	0-38	211	83	CAP; PCV	0-28	275	51
BOLT; PULLEY	0-33	066	68	CARTRIDGE; TURBO	0-37	132	80
BOLT; PUMP COVER	0-30	119	54	CASE ASM; OIL FILTER	0-50	280	106
BOLT; SENSOR	0-20	177	35	CASE; BRG, PTO	0-90	052	141
BOLT; SEPARATOR	0-28	261	51	CASE; FUEL FILTER	0-41	105	97
BOLT; SPACER	0-13	199	21	CASE; HEAD GEAR	0-11	181	11
BOLT; STAY TO C/BL	0-20	196	35	CASE; PINION, STARTER	0-65	002	131
BOLT; STAY TO HSG	0-20	192	35	CASE; TIMING GEAR	0-20	001	34
BOLT; SW, OIL LEVEL	0-13	112	21	CENTER ASM; FAN	0-33	340	71
BOLT; TENSION	0-33	137	70	CHAMBER ASM; SW, FILTER	0-50	508	108
BOLT; THROUGH, STARTER	0-65	027	131	CLAMP; HOSE	0-32	806	63
BOLT; THRUST COLLAR	0-14	101	25	CLAMP; TURBINE HSG, TURBOCHARGER	0-37	035	79
BOLT; WATER PIPE	0-50	498	107	CLIP; AIR BREATHER	0-28	010	50
BOLT; WATER PIPE INL	0-32	050	62	CLIP; BAND	0-25	401	42
BOLT; WATER PUMP	0-30	024	53	CLIP; BAND, HARNESS TO OIL PIPE	0-60	259	125
BOLT; BRACKET TUBE	0-13	188	21	CLIP; FUEL PIPE	0-42	125	100
BRACKET	1-56	041	145	CLIP; HARNESS	8-15	016	151
BRACKET SET; CAM, CYL HD	0-11	180	11	CLIP; HOSE	0-28	059	50
BRACKET; CLIP, OIL PIPE, TURBOCHARGE	0-52	384	116	CLIP; HOSE, DRAIN	0-50	462	107
BRACKET; COMMON RAIL	0-40	282	92	CLIP; HOSE, SEPARATOR	0-28	321	51
BRACKET; DUCT	0-57	296	119	CLIP; HOSE, TURBOCHARGER, INL	0-36	097	75
BRACKET; EGR COOLER	0-57	710	119	CLIP; INJ PIPE	0-40	113	91
BRACKET; EXH PIPE	0-36	266	75	CLIP; OIL PIPE	0-52	048	115
BRACKET; FUEL FILTER	0-41	041	96		0-52	204	116
BRACKET; FUEL PIPE CLIP	0-42	131	100	CLIP; OIL PIPE, BODY TO CMPR	0-52	119	115
BRACKET; GEN	0-60	019	125	CLIP; RUBBER HOSE	0-25	095	42
BRACKET; HARNESS	8-15	053	151		0-28	090	50
BRACKET; HOSE	0-28	097	50		0-31	079	57
BRACKET; IDLE PULLEY	0-33	075	68		0-32	035	62