

Operation & Maintenance Manual

D155AX-5

BULLDOZER

SERIAL NUMBER

D155AX - 75001 and up



WARNING

Unsafe use of this machine may cause serious injury or death. Operators and maintenance personnel must read this manual before operating or maintaining this machine. This manual should be kept inside the cab for reference and periodically reviewed by all personnel who will come into contact with the machine.

KOMATSU

FOREWORD

FOREWORD

This manual provides rules and guidelines which will help you use this machine safely and effectively. The precautions in this manual must be followed at all times when performing operation and maintenance. Most accidents are caused by the failure to follow fundamental safety rules for the operation and maintenance of machines. Accidents can be prevented by knowing beforehand conditions that may cause hazard when performing operation and maintenance.

WARNING

Operators and maintenance personnel must always do as follows before beginning operation or maintenance.

- **Always be sure to read and understand this manual thoroughly before performing operation and maintenance.**
- **This machine complies with EC directive (89/392/EEC). Machines complying with this directive display the CE mark**
- **Read the safety messages given in this manual and the safety labels affixed to the machine thoroughly and be sure that you understand them fully.**

Keep this manual at the storage location for the Operation and Maintenance Manual given below, and have all personnel read it periodically.

If this manual has been lost or has become dirty and cannot be read, request a replacement manual immediately from Komatsu or your Komatsu distributor.

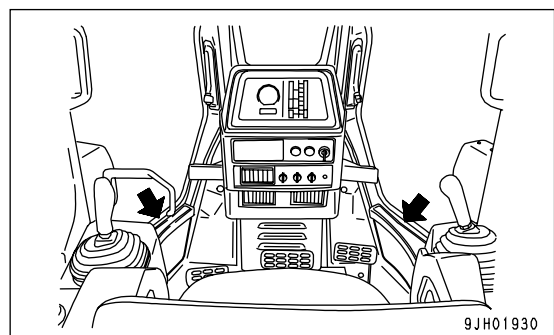
If you sell the machine, be sure to give this manual to the new owners together with the machine.

Komatsu delivers machines that comply with all applicable regulations and standards of the country to which it has been shipped. If this machine has been purchased in another country or purchased from someone in another country, it may lack certain safety devices and specifications that are necessary for use in your country. If there is any question about whether your product complies with the applicable standards and regulations of your country, consult Komatsu or your Komatsu distributor before operating the machine.

Storage location for the Operation and Maintenance Manual:

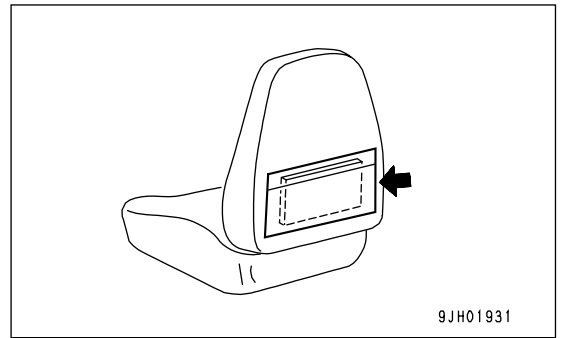
Machine equipped with cab

Inside of right and left doors



Machine without cab

Back pocket of operator's seat



SAFETY INFORMATION

To enable you to use this machine safely, safety precautions and labels are given in this manual and affixed to the machine to give explanations of situations involving potential hazards and of the methods of avoiding such situations.

Signal words

The following signal words are used to inform you that there is a potential hazardous situation that may lead to personal injury or damage.

In this manual and on machine labels, the following signal words are used to express the potential level of hazard.

DANGER

Indicates an imminently hazardous situation which, if not avoided, will result in death or serious injury. This signal word is to be limited to most extreme situations.

WARNING

Indicates a potentially hazardous situation which, if not avoided, could result in death or serious injury.

CAUTION

Indicates a potentially hazardous situation which, if not avoided, may result in minor or moderate injury. It may also be used to alert against unsafe practices.

Example of safety message using signal word

WARNING

To avoid hitting unlocked operation levers, lower equipment to ground and move SAFETY LOCK LEVER (located near seat) to LOCK position before starting up from operator's seat.
Sudden and unwanted machine movement can cause serious injury or death.

Other signal words

In addition to the above, the following signal words are used to indicate precautions that should be followed to protect the machine or to give information that is useful to know.

NOTICE

This word is used for precautions that must be taken to avoid actions which could shorten the life of the machine.

REMARKS

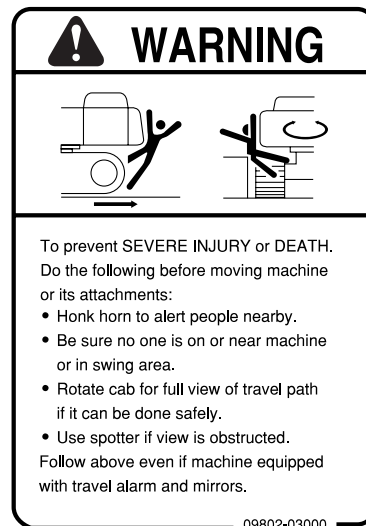
This gives information that is useful to know.

Safety labels

Safety labels are affixed to the machine to inform the operator or maintenance worker on the spot when carrying out operation or maintenance of the machine that may involve hazard.

This machine uses "Safety labels using words" and "Safety labels using pictograms" to indicate safety procedures.

Example of safety label using words



Part No.

Safety labels using pictogram

Safety pictograms use a picture to express a level of hazardous condition equivalent to the signal word. These safety pictograms use pictures in order to let the operator or maintenance worker understand the level and type of hazardous condition at all times. Safety pictograms show the type of hazardous condition at the top or left side, and the method of avoiding the hazardous condition at the bottom or right side. In addition, the type of hazardous condition is displayed inside a triangle and the method of avoiding the hazardous condition is shown inside a circle.



Part No.

Komatsu cannot predict every circumstance that might involve a potential hazard in operation and maintenance. Therefore, the safety messages in this manual and on the machine may not include all possible safety precautions. If any procedures or actions not specifically recommended or allowed in this manual are used, it is your responsibility to take the necessary steps to ensure safety.

In no event should you engage in prohibited uses or actions described in this manual.

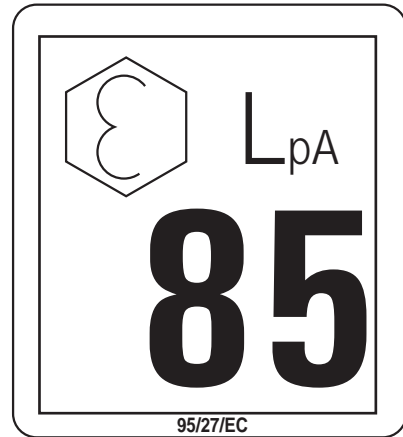
The explanations, values, and illustrations in this manual were prepared based on the latest information available at that time. Continuing improvements in the design of this machine can lead to changes in detail which may not be reflected in this manual. Consult Komatsu or your Komatsu distributor for the latest available information of your machine or for questions regarding information in this manual.

The numbers in circles in the illustrations correspond to the numbers in () in the text. (For example: ① → (1))

NOISE

Valid until 31 December 2001

Operator ears noise value (Sound pressure level)

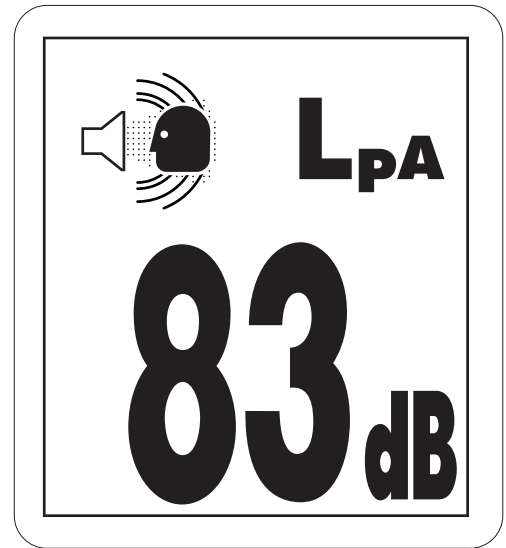


Ambiant noise value (Sound power level)

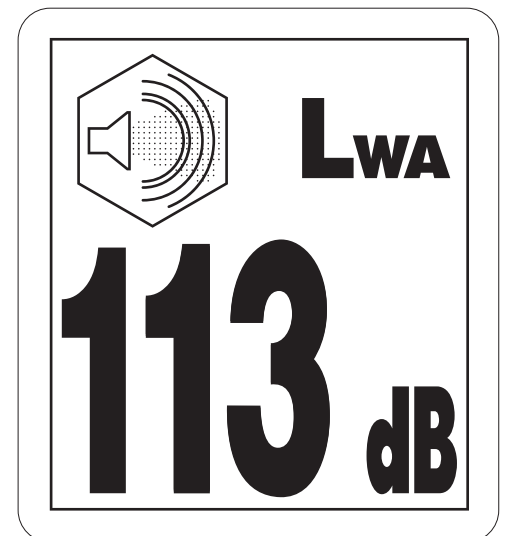


Valid as of 1 January 2002

- Sound pressure level at the operator's station, measured according to ISO6396 (Dynamic test method, simulated working cycle)



- Sound power level emitted. This is the guaranteed value as specified in European directive 2000/14/EC.

**VIBRATION**

When used for its intended purpose, levels of vibration for the earthworking machine transmitted from the operator's seat are lower or equal to the test vibrations for the relative machinery class in compliance with ISO 7096. The actual acceleration value of the upper limbs is less than 2.5 m/s². The actual acceleration value for the body is less than 1.25 m/s². These values were determined using a representative machine and with the help of the measurement procedures that are defined in the directives ISO 2631/1 and ISO 5349.

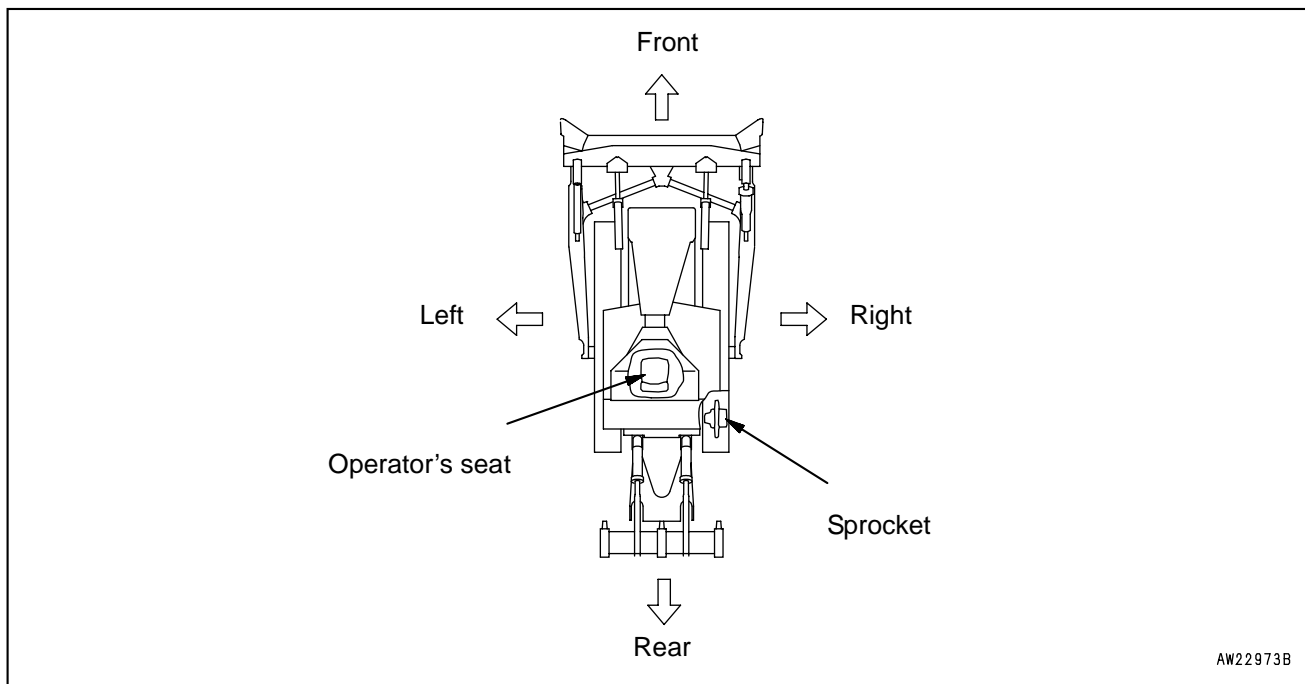
INTRODUCTION

This Komatsu machine is designed to be used mainly for the following works:

- Dozing
- Smoothing
- Cutting into hard or frozen ground or ditching.
- Felling trees, removing stumps

See the section "WORK POSSIBLE USING BULLDOZER (PAGE 3-107)" for further details.

FRONT/REAR, LEFT/RIGHT DIRECTIONS OF MACHINE



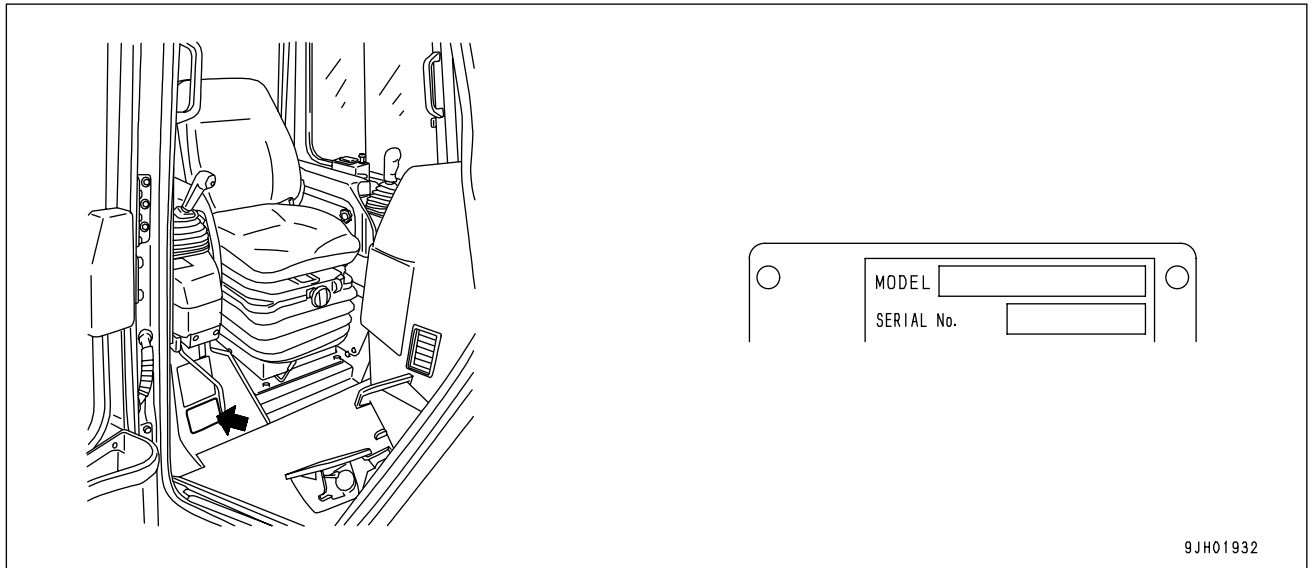
In this manual, the terms front, rear, left, and right refer to the travel direction as seen from the operator's cab when the operator's cab is facing the front and the sprocket is at the rear of the machine.

NECESSARY INFORMATION

When requesting service or ordering replacement parts, please inform your Komatsu distributor of the following items.

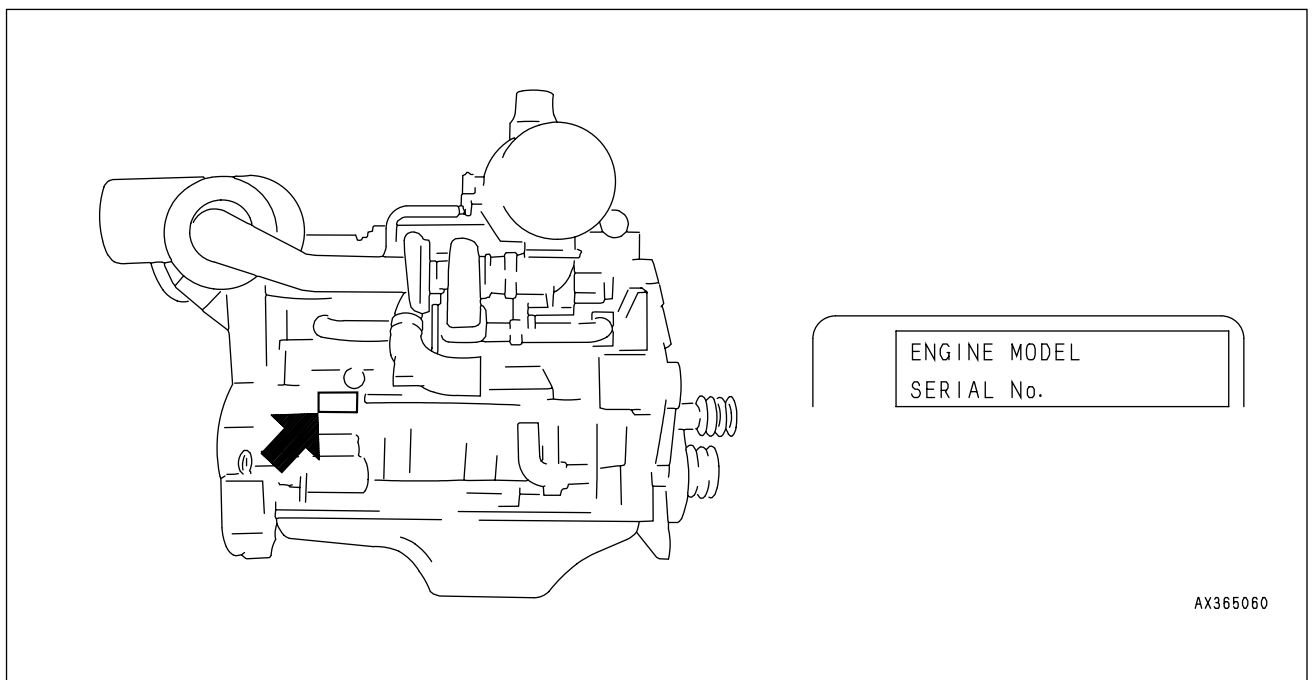
MACHINE SERIAL NO. PLATE AND POSITION

Under the front of the console box on the right side of the operator's seat.



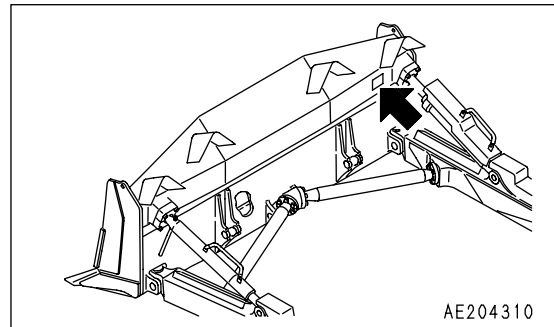
ENGINE SERIAL NO. PLATE AND POSITION

On the upper of the engine starting motor on the right side of the machine.



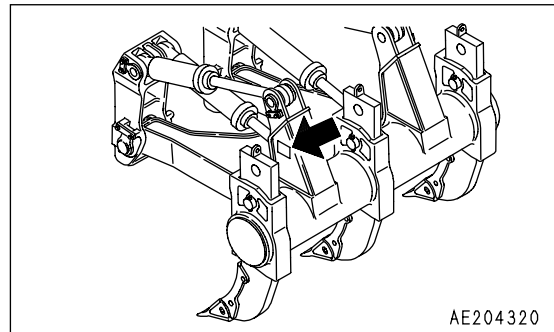
BLADE SERIAL NO. PLATE POSITION

This is located at the right side of blade back surface.



RIPPER SERIAL NO. PLATE POSITION

This is located at the left side surface of ripper beam.



POSITION OF SERVICE METER

This is at the left upper part of the monitor panel.

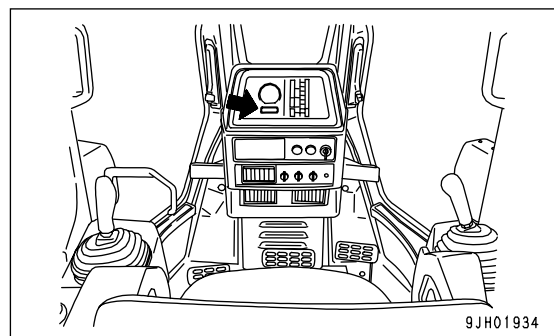


TABLE OF ENTER SERIAL NO. AND DISTRIBUTOR

Machine serial No.	
Engine serial No.	
Distributor name	
Address	----- ----- -----
Service Personal	-----
Phone/Fax	-----

FOREWORD.....	1-2
SAFETY INFORMATION.....	1-4
NOISE.....	1-6
VIBRATION.....	1-7
INTRODUCTION.....	1-8
FRONT/REAR, LEFT/RIGHT DIRECTIONS OF MACHINE.....	1-8
NECESSARY INFORMATION.....	1-9
MACHINE SERIAL NO. PLATE AND POSITION.....	1-9
ENGINE SERIAL NO. PLATE AND POSITION.....	1-9
BLADE SERIAL NO. PLATE POSITION.....	1-10
RIPPER SERIAL NO. PLATE POSITION.....	1-10
POSITION OF SERVICE METER.....	1-10
TABLE OF ENTER SERIAL NO. AND DISTRIBUTOR.....	1-11
SAFETY.....	2-2
SAFETY LABELS.....	2-4
POSITIONS OF SAFETY PICTOGRAMS.....	2-5
SAFETY LABELS.....	2-6
GENERAL PRECAUTIONS.....	2-11
PRECAUTIONS FOR OPERATION.....	2-20
STARTING ENGINE.....	2-20
OPERATION.....	2-22
TRANSPORTATION.....	2-26
BATTERY.....	2-27
TOWING.....	2-29
PRECAUTIONS FOR MAINTENANCE.....	2-30
GENERAL VIEW.....	3-2
GENERAL VIEW OF MACHINE.....	3-2
GENERAL VIEW OF CONTROLS AND GAUGES.....	3-3
EXPLANATION OF COMPONENTS.....	3-6
FRONT PANEL.....	3-7
SWITCHES.....	3-24
CONTROL LEVERS, PEDALS, DIAL.....	3-28
DUST INDICATOR.....	3-35
POWER SOURCE.....	3-35
FUSE BOX.....	3-36
TOOL BOX.....	3-40
AM/FM RADIO.....	3-46
HANDLING ACCUMULATOR.....	3-59
OPERATION.....	3-60
CHECK BEFORE STARTING ENGINE.....	3-60

STARTING ENGINE	3-79
AFTER STARTING ENGINE	3-84
WARMING-UP OPERATION	3-85
STOPPING ENGINE	3-89
CHECK AFTER STOPPING ENGINE	3-90
MACHINE OPERATION	3-91
STEERING MACHINE	3-97
PRECAUTIONS FOR OPERATION	3-100
PARKING MACHINE	3-102
CHECK AFTER FINISHING WORK	3-104
LOCKING	3-104
RIPPER OPERATION.....	3-105
WORK POSSIBLE USING BULLDOZER	3-107
ADJUSTING POSTURE OF WORK EQUIPMENT.....	3-109
TIPS FOR LONGER UNDERCARRIAGE LIFE	3-116
TRANSPORTATION	3-119
LOADING, UNLOADING WORK	3-119
PRECAUTIONS FOR LOADING	3-119
METHOD OF LIFTING MACHINE	3-120
PRECAUTIONS FOR TRANSPORTATION	3-121
COLD WEATHER OPERATION	3-124
COLD WEATHER OPERATION INFORMATION.....	3-124
AFTER DAILY WORK COMPLETION	3-126
AFTER COLD WEATHER SEASON	3-126
LONG TERM STORAGE	3-127
BEFORE STORAGE.....	3-127
DURING STORAGE	3-127
AFTER STORAGE.....	3-127
TROUBLESHOOTING	3-128
AFTER RUNNING OUT OF FUEL.....	3-128
METHOD OF TOWING MACHINE	3-129
DISCHARGED BATTERY.....	3-130
OTHER TROUBLE.....	3-134
GUIDE TO MAINTENANCE.....	4-2
OUTLINE OF SERVICE	4-5
OUTLINE OF OIL, FUEL, COOLANT	4-5
ELECTRIC SYSTEM MAINTENANCE	4-8
WEAR PARTS	4-9
WEAR PARTS LIST.....	4-9
USE OF FUEL, COOLANT AND LUBRICANTS ACCORDING TO AMBIENT TEMPERATURE.....	4-11
STANDARD TIGHTENING TORQUES FOR BOLTS AND NUTS.....	4-15

TORQUE LIST	4-15
PERIODIC REPLACEMENT OF SAFETY CRITICAL PARTS	4-16
SAFETY CRITICAL PARTS.....	4-17
MAINTENANCE SCHEDULE CHART	4-19
MAINTENANCE SCHEDULE CHART	4-19
SERVICE PROCEDURE	4-22
WHEN REQUIRED	4-23
CHECK BEFORE STARTING	4-44
EVERY 250 HOURS SERVICE	4-45
EVERY 500 HOURS SERVICE	4-52
EVERY 1000 HOURS SERVICE	4-58
EVERY 2000 HOURS SERVICE	4-66
EVERY 4000 HOURS SERVICE	4-70
EVERY 8000 HOURS SERVICE	4-73
SPECIFICATIONS	5-2
GENERAL PRECAUTIONS	6-2
PRECAUTIONS RELATED TO SAFETY	6-2
INTRODUCTION OF OPTIONAL PARTS AND ATTACHMENTS.....	6-4
INTRODUCTION OF OPTIONAL PARTS AND ATTACHMENTS.....	6-4
HANDLING HEADREST	6-5
HANDLING REVERSIBLE FAN.....	6-6
REVERSING REVERSIBLE FAN	6-6
HANDLING CAP WITH LOCK	6-7
OPENING AND CLOSING LOCKABLE CAP	6-7
PROCEDURE FOR SELECTING RIPPER POINT.....	6-8
PROCEDURE FOR SELECTING RIPPER POINT.....	6-8



SAFETY

WARNING

Please read and make sure that you fully understand the precautions described in this manual and the safety labels on the machine. When operating or servicing the machine, always follow these precautions strictly.

SAFETY

SAFETY	2
SAFETY LABELS.....	4
POSITIONS OF SAFETY PICTOGRAMS	5
SAFETY LABELS.....	6
GENERAL PRECAUTIONS	11
SAFETY RULES	11
IF ABNORMALITIES ARE FOUND	11
CLOTHING AND PERSONAL PROTECTIVE ITEMS	11
FIRE EXTINGUISHER AND FIRST AID KIT	11
SAFETY FEATURES.....	12
KEEP MACHINE CLEAN.....	12
INSIDE OPERATOR'S COMPARTMENT.....	12
ALWAYS APPLY LOCK WHEN LEAVING OPERATOR'S SEAT	12
HANDRAILS AND STEPS	13
MOUNTING AND DISMOUNTING	14
NO PEOPLE ON ATTACHMENTS.....	14
PREVENTION OF BURNS	15
FIRE PREVENTION	15
ACTION IF FIRE OCCURS	16
WINDOW WASHER LIQUID	16
PRECAUTIONS WHEN USING ROPS	16
PRECAUTIONS FOR ATTACHMENTS	17
UNAUTHORIZED MODIFICATION	17
SAFETY AT WORKSITE	17
WORKING ON LOOSE GROUND.....	18
DO NOT GO CLOSE TO HIGH-VOLTAGE CABLES.....	18
ENSURE GOOD VISIBILITY	18
VENTILATION FOR ENCLOSED AREAS.....	19
CHECKING SIGNALMAN'S SIGNALS AND SIGNS	19
BE CAREFUL ABOUT ASBESTOS DUST.....	19
PRECAUTIONS FOR OPERATION	20
STARTING ENGINE	20
CHECKS BEFORE STARTING ENGINE	20
PRECAUTIONS WHEN STARTING	21
PRECAUTIONS IN COLD AREAS	21
OPERATION.....	22
CHECKS BEFORE OPERATION	22
PRECAUTIONS FOR MOVING MACHINE FORWARD OR IN REVERSE.....	22
PRECAUTIONS WHEN TRAVELING.....	23
TRAVELING ON SLOPES.....	24
PROHIBITION OF DANGEROUS WORK	24
USING BRAKES	24
OPERATE CAREFULLY ON SNOW	24
PARKING MACHINE	25
TRANSPORTATION.....	26
LOADING AND UNLOADING.....	26
SHIPPING.....	26
BATTERY.....	27
BATTERY HAZARD PREVENTION	27