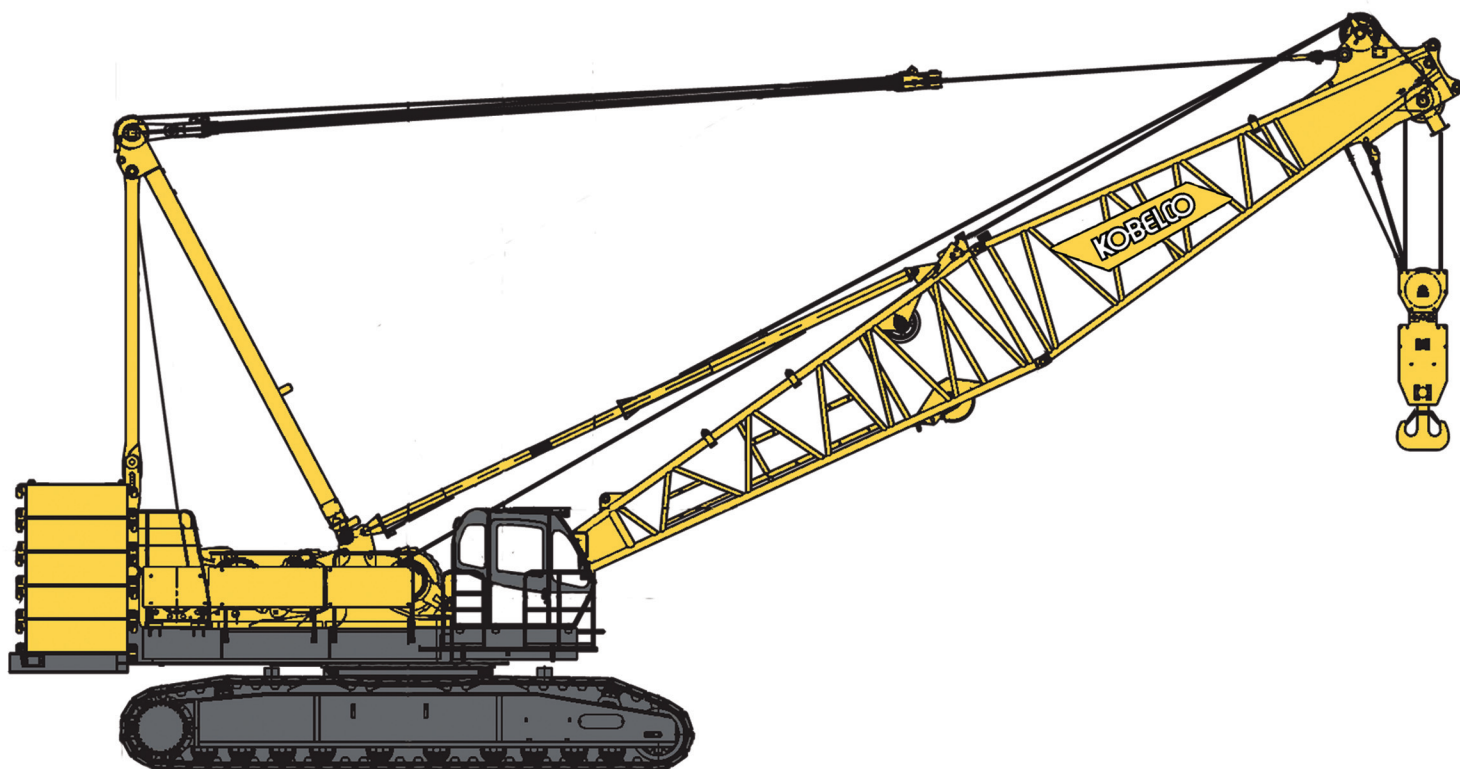


KOBELCO

CK2000-II

HYDRAULIC CRAWLER CRANE



Max. Lift Capacity: 400,000 lbs

Max. Boom Length: 280 ft

Max. Boom + Jib Length: 240 ft + 100 ft

SPECIFICATIONS FOR CK2000-II CRAWLER CRANE

The Kobelco CK2000-II Crawler Crane is designed from the ground up for reliable operation, convenient maintenance and easy transport. Please consult your Kobelco distributor for additional information regarding specifications, operating parameters and maintenance requirements.

1. GENERAL DESCRIPTION

Type	Crawler mounted, fully revolving
Maximum lifting capacity	
Heavy boom (Optional)	400,000 lbs (181,400 kg) at 12.3' (3.75 m) operating radius, with 40' Heavy boom
Standard boom	352,800 lbs (160,000 kg) at 14.3 ft (4.36 m) operating radius with 50' Standard boom
Basic boom length	
Heavy boom (Optional)	40' (12.2 m)
Standard boom	50' (15.2 m)
Maximum boom length	
Heavy boom (Optional)	40' (12.2 m) Length of the heavy boom is 40' only.
Standard boom	280' (85.3 m)
Maximum boom & jib length	240' + 100' (73.2 m + 30.5 m)
Working weights	Approx. 362,200 lbs (164,300 kg)
Ground pressure	Approx. 13.24 psi (91.2 kPa)
Gradeability	30%

Calculations to determine working weight, ground pressure and gradeability include the weight of the upper and lower works of the crane, counterweights, carbody weights, 50' standard boom and the hook blocks.

2. GENERAL DIMENSIONS

Height to top of gantry (lowered)	12' 6-13/16" (3.83 m)
Width of upper machine with operator's cab	11' 5-7/8" (3.50 m)
Radius of rear end (counterweight)	19' 6-1/4" (5.95 m)
Counterweight ground clearance	4' 7-7/8" (1.42 m)
Center of rotation to boom foot pin	4' 7-1/8" (1.40 m)
Height from ground to boom foot pin	8' 3-3/8" (2.53 m)
Height over gantry (raised)	31' 4-5/8" (9.57 m)
Overall length of crawler	27' 5-1/8" (8.36 m)
Center to center of tumblers	23' 9-13/16" (7.26 m)
Overall width of crawlers	22' 4-1/2" (6.82 m)
Shoe width	48" (1.22 m)
Ground clearance of carbody	17" (0.43 m)

3. WORKING SPEED

Hoist line speed (front and rear drum)	330 ft/min (100 m/min)
Lowering line speed (front and rear drum)	330 ft/min (100 m/min)
Boom hoist line speed	89 x 2 ft/min (27 x 2 m/min)
Boom lowering line speed	89 x 2 ft/min (27 x 2 m/min)
Swing speed	2.6 rpm (2.6 min ⁻¹)
Travel speed (High / Low)	0.68 / 0.41 mph (1.1 / 0.66 km/hour)

Line speeds based on single line, no load and first layer of rope on the drum.

4. UPPER MACHINERY

4.1 Power plant

Diesel engine, make and model	Hino P11C-UN (Comply with EPA "Tier 3")
No. of cylinders	6
Bore X stroke	4-13/32" X 5-7/8" (122 mm X 150 mm)
Cycles	4
Total displacement	642 cu.in (10,520 cm ³)
Rated output SAE GROSS	331 HP / 2,000 rpm (247 kW / 2,000 min ⁻¹)
Maximum torque	959 lbs-ft / 1,500 rpm (1,300 Nm / 1,500 min ⁻¹)
Starter	24 Volts / 6.0 kW
Alternator	24 Volts / 50 Amp
Batteries	Two 12 volt, 170 AH/20HR capacity series connected.
Radiator	Corrugated type core, thermostatically controlled.
Throttle	Twist grip type hand throttle, electrically controlled.
Air cleaner	Dry type with replaceable paper element.
Fuel tank capacity	106 US gal. (400 liters)
Lube oil filter	Full flow and by-pass type with replaceable element.
Fuel filter	Heavy duty with replaceable element.
Approximate fuel consumption	0.362 lb / HP-hr (220 g / kW-hr) 17.3 US gal. / hr at 100 % HP