

**KOBELCO**

# **CK1750**

## **Lifting Capacities/Working Ranges**

**Maximum Lifting Capacity: 175 US tons at 16 ft**

**Maximum Boom Length: 270 ft**

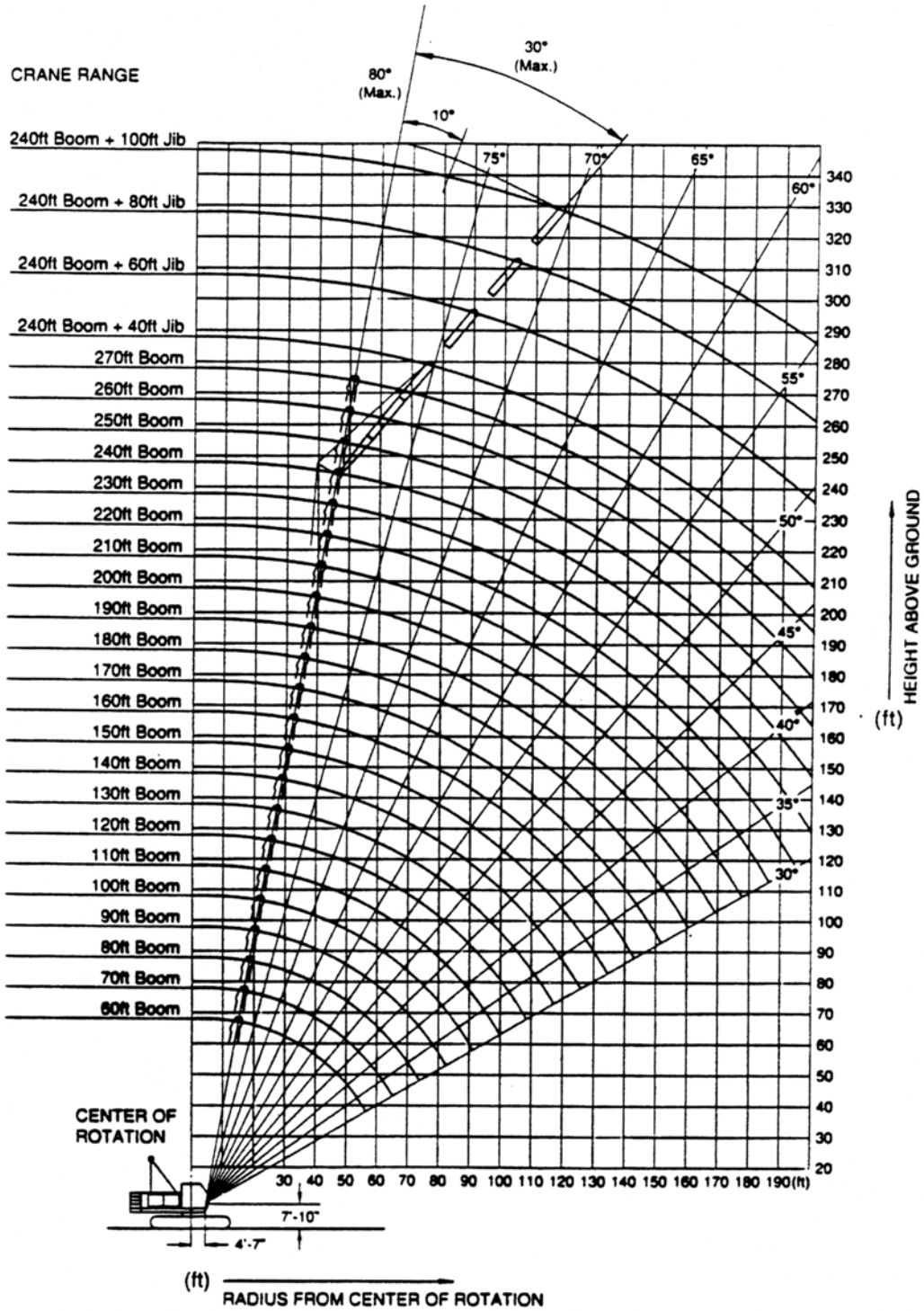
**Maximum Total Length (Boom + Fixed Jib): 340 ft (240 ft + 100 ft)**

**Maximum Tower Length: 326 ft (176 ft + 150 ft)**

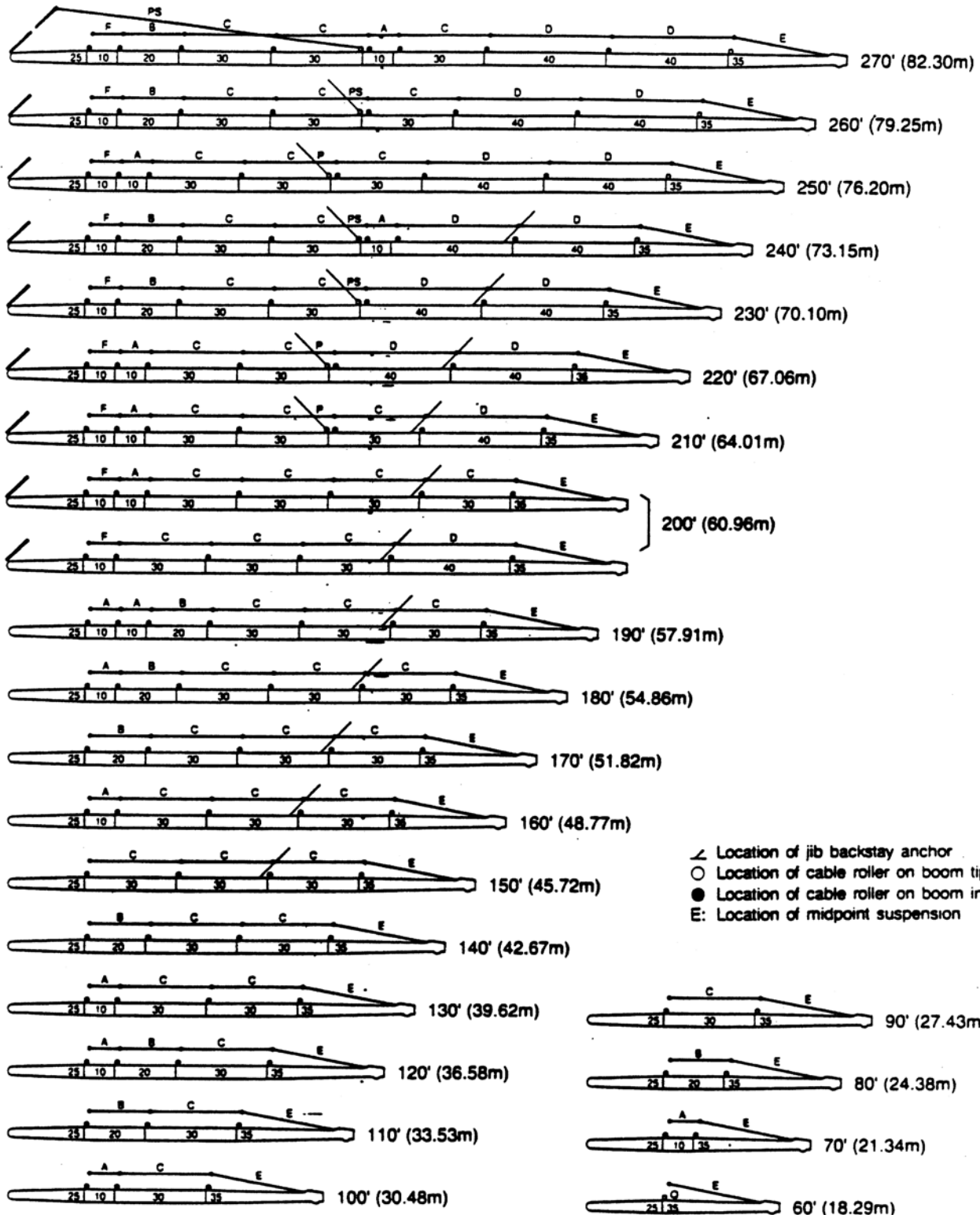


 **KOBE STEEL, LTD.**

# Working Ranges (with fixed jib)



# Boom And Guy Line Arrangement



- ∠ Location of jib backstay anchor
- Location of cable roller on boom tip
- Location of cable roller on boom insert
- E: Location of midpoint suspension