



PARTS CATALOG

230SR-3
Hydraulic Excavator
Tier IV

APPLICABLE: ASN LA07-03001

S3YB00022ZE01

Issued 10/2013

Replaces:

Printed in U.S.A.

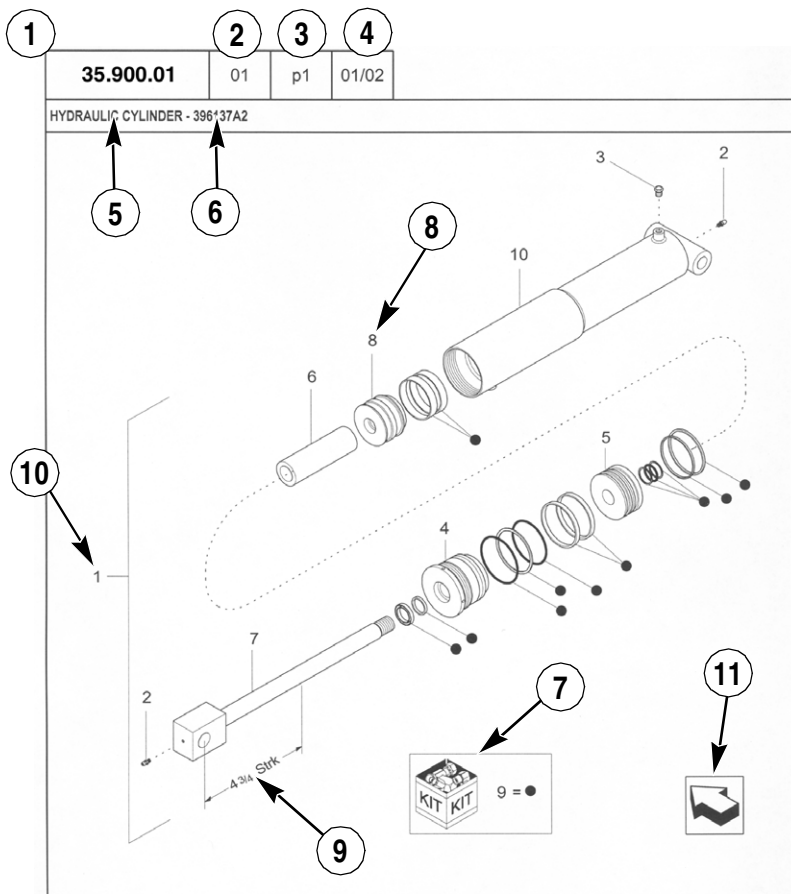
Copyright © 2009 Kobelco Construction Machinery America, LLC. All Rights Reserved

GENERAL INFORMATION

1. Whenever the terms left and right are used, it should be understood to mean from a position facing in direction of travel.
2. Throughout this manual you may find common hardware not illustrated, but listed in the description column. The service part immediately preceding a hardware listing is the part using these particular items for mounting purposes. This hardware is not included with the service part or assembly when ordered as a replacement.
3. The illustrations show typical assemblies plus individual parts but in all cases may not show the exact shape or detail of parts required. However, the purpose for the illustrations is to identify parts performing like functions. Whenever possible illustrations are located at the beginning of each section or immediately adjacent to the applicable text.
4. CNH America LLC is continually striving to improve its products. We must, therefore, reserve the right to make improvements or changes when it becomes practical and possible to do so, without incurring any obligation to make changes or additions to the equipment sold previously.

CNH America LLC, Racine, WI 53404 U.S.A.

How to Use Your Parts Catalog



1	2	3	4
35.900.01	01	p1	01/02
HYDRAULIC CYLINDER - 396137A2			
8	12	13	15
REF	FN	PART NUMBER	YR/SN
1	1	396137A2	BTW 01/85 & 02/02
2		31-95	Before 01/85
2		219-8	From 01/85
3		{402475A2}	
4		402474A1	
5		402468A1	BSN JJC0189200
5		145221C3	ASN JJC0189200
6		402471A1	
7		402473A1	
8		402469A1	
9		402476A1	
10		NSS	
			QTY
			DESCRIPTION
			1 CYLINDER ASSY. 4-3/4 in strk, Inc 2-10
			2 FITTING
			2 NIPPLE, LUBE Grease, 1/4 tpr x 17/32
			1 BREATHER
			1 CAP CYLINDER END
			1 PISTON ROD/GLAND
			1 PISTON
			1 SPACER
			1 ROD, PISTON
			1 PISTON ROD/GLAND
			1 PACKAGE, SEALS
			1 NOT SERVICED SEPARAT CASE ASSEMBLY
12	(1)	08-20	
STANDARD		MODELS	

How to Use Your Parts Catalog

1. Figure Number
2. Sequence code within the Figure Number
3. Page number within the Sequence Code
4. Date of Printing (month / year)
5. Figure Description
6. General information regarding the figure
7. Parts supplied in repair kits per symbol reference
8. Figure call-out of the part number (REF)
9. Technical Specifications relating to the part indicated
10. Figure call-out includes bracketed items, the included items may also be listed in the additional description area
11. Orientation - Arrow indicates front of the machine
12. Footnote - Additional information relating to the part number. In this example, 08-20 equals another figure that this part is shown on.
13. Part Number
 - NSS = Non-serviced parts
 - Bracketed numbers = not available as service parts in this market
14. Not Available as service part in this market
15. YR/SN
 - Year
 - Before 01/85 = Part valid for production January 1985 and before
 - From 01/85 = Part valid for production from January 1985 and after
 - BTW 01/85 & 02/02 = Part valid for machines produced between January 1985 and February 2002.
 - Serial Number (P.I.N.)
 - BSN JJC0268800 = Part valid for serial number JJC0268800 and below
 - ASN JJC0268800 = Part valid for serial number JJC0268800 and above
 - BTW JJC0178000 & JJC0179000 = Part valid for serial numbers between JJC0178000 & JJC0179000
16. Total Quantity of the Part referred to in the page. The quantity can be replaced by the following indications:
 - AR = quantity as required
 - X = as required
17. Part Description
18. Additional description of the part to help confirm identification
19. Figure Notes
20. Model Number(s)

Explanation of Abbreviations

Abbreviation	Meaning
adj	adjustable
amp	ampere
AR	As required
ASN	Serial number and after / P.I.N. and after
barb	barb
blkhd	bulkhead
boss	boss
BSN	before serial number / before P.I.N
BTW	between
cc	cubic centimetre
chain	chain
cl	class
cp pt	cup point
CRS	Chrome Alloy Steel
CST	Carbon Steel
cu yd	cubic yard
deg	degree
dia	diameter
dr type	drive type
dry	dry
fc	face
fc sl	face seal
fem	female
fem PT	female pipe thread
fl	flare
ft	feet (or foot)
gal	gallon(s)
gr	grade
hd	head
hp	horsepower
ID	inside diameter

Abbreviation	Meaning
in	inch(es)
Inc.	includes
inv fl	inverted flare
K	kilo
kg	kilogram
L	litre
lb	pound(s)
lg	long
LH	left hand
LH thd	left hand thread
links	links
M	(prefix) metric thread size
m	metre
male	male
mm	millimetre
NF	National Fine
No.	number
NS	National Super Fine
OD	outside diameter
ohm	electrical unit of resistance
Or	O-ring
orifice	orifice
P	pitch
piece	piece
psi	pounds per square inch
PT	pipe thread
rd	round
rd holes	round holes
RH	right hand
RH thd	right hand thread
rpm	revolutions per minute

Explanation of Abbreviations

Abbreviation	Meaning
sl	self locking
slat	slat
spool	spool
sq	square
SST	Stainless Steel
st	self tapping
stem	stem
strk	stroke
sw	swivel
T	teeth
Teflon	Teflon
thin	thin
thk	thick
tpr	taper

Abbreviation	Meaning
tube	tube
type	type
V	volt(s)
W	watt(s)
way	way
wide	wide
X	as required
yd	yard

Dimensions

Metric and U.S. hardware dimensions do not show the numeric designations of standard coarse threads. A number following a semi colon (;) is the class or grade of hardware. A comma (,) represents the decimal point (.) used in U.S. dimensions.



TABLE OF CONTENTS

88.000.00		ACCESSORIES
88.100.10		ELEMENT KIT
88.100.40		TOOL & ACCESSORY
88.100.41		ENGINE ACCESSORY PARTS
88.100.42		ENGINE ACCESSORY PARTS
88.100.43		ENGINE ACCESSORY PARTS
88.100.44		ENGINE ACCESSORY PARTS
88.100.45		MUFFLER, ASSY
84.000.00		BOOMS, DIPPERS AND BUCKETS
84.300.10		BUCKET INSTALL
50.000.00		CAB CLIMATE CONTROL
50.200.21		CONDITIONER, AIR
50.200.22		CONDITIONER, AIR
50.200.23		CONDITIONER, AIR
50.200.24		CONDITIONER, AIR
50.200.25		CONDITIONER, AIR
50.200.26		CONDITIONER, AIR
50.200.27		CONDITIONER, AIR
55.000.00	01	ELECTRICAL SYSTEMS
55.000.00	02	ELECTRICAL SYSTEMS
55.100.10	01	HARNESS ASSY, UPPER
55.100.10	02	HARNESS ASSY, UPPER
55.100.10	03	HARNESS ASSY, UPPER
55.100.10	04	HARNESS ASSY, UPPER
55.100.10	05	HARNESS ASSY, UPPER
55.100.10	06	HARNESS ASSY, UPPER
55.100.10	07	HARNESS ASSY, UPPER
55.100.10	08	HARNESS ASSY, UPPER
55.100.10	09	HARNESS ASSY, UPPER
55.100.11	01	HARNESS ASSY, UPPER
55.100.11	02	HARNESS ASSY, UPPER
55.100.11	03	HARNESS ASSY, UPPER
55.100.12		HARNESS ASSY, UPPER
55.100.20		HARNESS ASSY, CAB
55.100.21		HARNESS ASSY, CAB
55.100.30		ELECTRICAL PARTS (ENGINE)

TABLE OF CONTENTS

55.100.31		ELECTRICAL PARTS (ENGINE)
55.100.32		ELECTRICAL PARTS (ENGINE)
55.100.33		ELECTRICAL PARTS (ENGINE)
55.100.34		ELECTRICAL PARTS (ENGINE)
55.100.35		ELECTRICAL PARTS (ENGINE)
55.100.70		HARNESS ASSY, BOOM
55.100.71		HARNESS ASSY, BOOM
55.301.10		BATTERY ASSY
55.404.10		LIGHT INSTALL, UPPER
55.404.11		LIGHT INSTALL, BOOM
55.404.12		LIGHT INSTALL (2 LIGHT)
55.404.13		LIGHT INSTALL (CAB, SUN VISOR)
55.404.20		LAMP INSTALL
55.404.21		LAMP INSTALL
55.408.00		ELEC ASSY, UPPER
55.408.30		ALARM ASSY
55.418.10	01	PANEL ASSY, INSTRUM
55.418.10	02	PANEL ASSY, INSTRUM
55.418.10	03	PANEL ASSY, INSTRUM
55.418.10	04	PANEL ASSY, INSTRUM
55.418.10	05	PANEL ASSY, INSTRUM
55.424.10		SENSOR, ANGLE
55.440.10		CONTROLLER INSTALL
55.440.11		CONTROLLER INSTALL
55.440.12		CONTROLLER INSTALL
55.440.13		ENGINE CONTROL SYSTEM
55.518.10		SUN VISOR ASSY
55.518.20		WASHER TANK ASSY
55.564.01	01	MONITOR INSTALL
55.564.01	02	MONITOR INSTALL
55.564.01	03	MONITOR INSTALL
55.564.01	04	MONITOR INSTALL
55.564.01	05	MONITOR INSTALL
55.564.02	01	MONITOR INSTALL (ADD ON COUNTER WEIGHT)
55.564.02	02	MONITOR INSTALL (ADD ON COUNTER WEIGHT)
55.564.02	03	MONITOR INSTALL (ADD ON COUNTER WEIGHT)

TABLE OF CONTENTS

55.564.02	04	MONITOR INSTALL (ADD ON COUNTER WEIGHT)
55.564.02	05	MONITOR INSTALL (ADD ON COUNTER WEIGHT)
10.000.00	01	ENGINE
10.000.00	02	ENGINE
10.000.01		GASKET KIT (ENGINE OVERHAUL)
10.001.01		CYLINDER BLOCK
10.001.02		CYLINDER BLOCK
10.012.10		ENGINE INSTALL
10.012.11		ENGINE INSTALL
10.012.12		ENGINE INSTALL
10.101.01		CYLINDER HEAD
10.101.02		CYLINDER HEAD
10.101.03		CYLINDER HEAD
10.105.01		MAIN MOVING PARTS
10.105.02		MAIN MOVING PARTS
10.106.01		CAMSHAFT AND IDLE GEAR
10.106.02		VALVE SYSTEM
10.106.04		TIMING GEAR COVER AND FLYWHEEL HOUSING
10.202.20		AIR CLEANER ASSY
10.202.21		AIR CLEANER ASSY
10.214.10		FUEL LINES
10.214.11		FUEL LINES
10.214.12		FUEL SYSTEM
10.214.13		FUEL SYSTEM
10.214.14		FUEL SYSTEM
10.214.15		FUEL SYSTEM
10.214.16		FUEL SYSTEM
10.214.17		FUEL SYSTEM
10.216.10		FUEL TANK INSTALL
10.250.01		TURBOCHARGER
10.254.10		AIR INTAKE AND EXHAUST SYSTEM
10.254.11		AIR INTAKE AND EXHAUST SYSTEM
10.254.12		AIR INTAKE AND EXHAUST SYSTEM
10.254.30		MUFFLER ASSY
10.304.10		LUBRICATION
10.304.11		LUBRICATION

TABLE OF CONTENTS

10.400.01		COOLING SYSTEM
10.406.10		RADIATOR GROUP
10.406.11		RADIATOR GROUP
10.406.12		RADIATOR GROUP
10.406.20		RADIATOR INSTALL
10.406.21		RADIATOR INSTALL
10.406.22		RADIATOR INSTALL
39.000.00	01	FRAMES
39.000.00	02	FRAMES
39.101.10		FRAME, UPPER
39.101.20		FRAME GROUP, UPPER
39.101.21		FRAME GROUP, UPPER
39.102.10		LOW GROUP (LONG CRAWLER)
39.102.20		FRAME ASSY, LOW (LONG CRAWLER)
39.102.30		RING ASSY, SLEWING
39.105.10		ARM INSTALL
39.105.20		CAP ASSY
39.105.21		CAP ASSY
39.105.22		ARM 2.87M
39.105.23		ARM GROUP
39.105.24		CAP ASSY
39.105.30		BOOM INSTALL
39.405.10		BOOM GROUP
39.405.30		BOOM, HOE
37.000.00		TOWING HOOKS AND BALLASTING
37.140.10		COUNTERWEIGHT INSTALL
37.140.11		COUNTERWEIGHT INSTALL
37.140.12		COUNTERWEIGHT INSTALL
35.000.00	01	HYDRAULIC SYSTEMS
35.000.00	02	HYDRAULIC SYSTEMS
35.000.00	03	HYDRAULIC SYSTEMS
35.000.00	04	HYDRAULIC SYSTEMS
35.106.50		POWER TAKE-OFF ASSY
35.300.10		HYD TANK INSTALL
35.310.10		HYD LINES, LOW (LONG CRAWLER)
35.310.11		HYD LINES, LOW (LONG CRAWLER)

TABLE OF CONTENTS

35.310.20		HYD LINES, UPPER
35.310.21		HYD LINES, UPPER
35.310.22		HYD LINES, UPPER
35.310.23		HYD LINES, UPPER
35.310.24		HYD LINES, UPPER
35.310.30		HYD LINES, PUMP
35.310.31		HYD LINES, PUMP
35.310.40		HYD LINES, RETURN
35.310.41		HYD LINES, RETURN
35.310.50		HYD LINES, PROPEL
35.310.60		HYD LINES, SWIVEL
35.310.61		HYD LINES, SWIVEL
35.322.02	01	CONTROL LINES, MAIN
35.322.02	02	CONTROL LINES, MAIN
35.322.02	03	CONTROL LINES, MAIN
35.322.02	04	CONTROL LINES, MAIN
35.322.10		CONTROL LINES, PUMP
35.322.20		CONTROL LINES, PROPEL
35.322.50		CONTROL LINES, BLOCK
35.322.51		CONTROL LINES, BLOCK
35.322.52		CONTROL LINES, BLOCK
35.322.53		CONTROL LINES, BLOCCK
35.322.70		CONTROL LINES, VALVE
35.322.71		CONTROL LINES, VALVE
35.322.72		CONTROL LINES, VALVE
35.350.10		VALVE, PILOT
35.350.11		VALVE, PILOT
35.350.12		VALVE, PILOT
35.350.30		VALVE ASSY, RELIEF
35.350.50		VALVE, SELECTOR
35.350.51		VALVE, SELECTOR
35.350.60		VALVE ASSY, SOLENOID
35.350.61		VALVE ASSY, SOLENOID
35.350.62		VALVE ASSY, SOLENOID
35.350.63		VALVE ASSY, SOLENOID
35.350.90		VALVE, STOP

TABLE OF CONTENTS

35.352.10	MOTOR INSTALL, SWING
35.352.20	MOTOR ASSY, SWING
35.352.21	MOTOR ASSY, SWING
35.352.22	MOTOR ASSY, SWING
35.353.10	MOTOR INSTALL, PROPEL
35.353.20	MOTOR ASSY, PROPEL
35.353.21	MOTOR ASSY, PROPEL
35.353.22	MOTOR ASSY, PROPEL
35.353.23	MOTOR ASSY, PROPEL
35.353.24	MOTOR ASSY, PROPEL
35.354.10	JOINT INSTALL, SWIVEL
35.354.20	JOINT, SWIVEL
35.355.10	CONTROLS, OPERATORS (NIBBLER & BREAKER)
35.355.11	CONTROLS, OPERATORS (NIBBLER & BREAKER)
35.355.12	CONTROLS, OPERATORS (NIBBLER & BREAKER)
35.355.13	CONTROLS, OPERATORS (NIBBLER & BREAKER)
35.355.14	CONTROLS, OPERATORS (NIBBLER & BREAKER)
35.355.15	CONTROLS, OPERATORS (NIBBLER & BREAKER)
35.355.16	CONTROLS, OPERATORS (NIBBLER & BREAKER)
35.355.17	CONTROLS, OPERATORS (NIBBLER & BREAKER)
35.355.18	CONTROLS, OPERATORS (NIBBLER & BREAKER)
35.355.19	CONTROLS, OPERATORS (NIBBLER & BREAKER)
35.355.20	CONTROLS, OPERATORS (NIBBLER & BREAKER)
35.355.40	CONTROL LINES, REMOTE
35.355.41	CONTROL LINES, REMOTE
35.355.42	CONTROL LINES, REMOTE (NIBBLER & BREAKER)
35.359.10	VALVE INSTALL
35.359.11	VALVE INSTALL
35.359.12	VALVE INSTALL (EXTRA)
35.702.10	CONNECTOR ASSY (NIBBLER & BREAKER)
35.900.10	HYD LINES, CYLINDER (ARM)
35.900.11	HYD LINES, ARM
35.900.12	HYD LINES, ARM (NIBBLER & BREAKER)
35.900.20	HYD LINES, BOOM (NIBBLER & BREAKER)
35.900.21	HYD LINES, BOOM (NIBBLER & BREAKER)
35.900.22	HYD LINES, CYLINDER (BOOM)

TABLE OF CONTENTS

35.900.30		HYD LINES, CYLINDER (BUCKET)
35.964.10		CYLINDER, ARM
35.964.20		CYLINDER, BOOM
35.964.40		CYLINDER INSTALL (ARM)
35.964.50		CYLINDER INSTALL (BOOM)
35.964.60		CYLINDER INSTALL (BUCKET)
35.964.61		CYLINDER, BUCKET
05.100.20		FILTER LIST
90.000.00	01	PLATFORM, CAB, BODYWORK AND DECALS
90.000.00	02	PLATFORM, CAB, BODYWORK AND DECALS
90.108.10	01	NAME PLATE INSTALL
90.108.10	02	NAME PLATE INSTALL
90.108.11		NAME PLATE INSTALL
90.108.12	01	NAME PLATE INSTALL
90.108.12	02	NAME PLATE INSTALL
90.108.13		NAME PLATE INSTALL
90.108.14		NAME PLATE INSTALL
90.108.15		NAME PLATE INSTALL
90.108.16		NAME PLATE INSTALL
90.108.17		NAME PLATE INSTALL
90.108.18		NAME PLATE INSTALL
90.108.20		NAME PLATE INSTALL
90.108.21		NAME PLATE INSTALL
90.110.10		PLATE INSTALL, FLOOR
90.110.11		PLATE INSTALL, FLOOR
90.110.20		INSULATION INSTALL
90.118.10		MIRROR INSTALL
90.118.12		MIRROR INSTALL
90.119.10	01	GUARD INSTALL
90.119.10	02	GUARD INSTALL
90.119.10	03	GUARD INSTALL
90.119.10	04	GUARD INSTALL
90.119.10	05	GUARD INSTALL
90.119.10	06	GUARD INSTALL
90.119.10	07	GUARD INSTALL
90.119.10	08	GUARD INSTALL

TABLE OF CONTENTS

90.119.10	09	GUARD INSTALL
90.119.10	10	GUARD INSTALL
90.119.10	11	GUARD INSTALL
90.119.10	12	GUARD INSTALL
90.119.10	13	GUARD INSTALL
90.119.10	14	GUARD INSTALL
90.119.70		GUARD ASSY, CAB (VANDALIZM GUARD)
90.119.71		GUARD ASSY, CAB (VANDALIZM GUARD)
90.120.10		SEAT INSTALL
90.120.11		SEAT INSTALL
90.120.12		SEAT BELT ASSY
90.130.10		COVER ASSY, UNDER
90.130.11		COVER ASSY, UNDER
90.150.10	01	CAB INSTALL
90.150.10	02	CAB INSTALL
90.150.10	03	CAB INSTALL
90.150.10	04	CAB INSTALL
90.150.10	05	CAB INSTALL
90.150.10	06	CAB INSTALL
90.150.10	07	CAB INSTALL
90.150.10	08	CAB INSTALL
90.150.10	09	CAB INSTALL
90.150.10	10	CAB INSTALL
90.150.10	11	CAB INSTALL
90.150.10	12	CAB INSTALL
90.150.10	13	CAB INSTALL
90.150.BJ	01	CAB GUARD
90.150.BJ	02	CAB GUARD
90.150.BJ	03	CAB GUARD
90.151.AD	01	SEAT BELT (3" WIDE)
90.600.01		PAINT COLOR
00.000.00		MAIN SECTIONS
48.000.00		SUSPENSION & TRACKS
48.100.10		IDLER ASSY, CRAWLER
48.100.11		IDLER ASSY, CRAWLER
48.100.12		STEP INSTALL

TABLE OF CONTENTS

48.100.20	SHOE ASSY (LONG CRAWLER, 790MM)
48.138.10	ROLLER ASSY, UPPER
48.138.20	ROLLER ASSY, TRACK



SECTION INDEX

Top Level

00.000.00

MAIN SECTIONS

00.000.00

p1

9/2013

MAIN SECTIONS

