

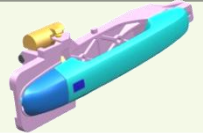
# Smart Key System



## Main Features

### Passive Door Lock & Unlock :

- Push button on driver or passenger side door handle. → Not touch sensor type



### ESCL (Electronic Steering Column Lock) :

- Steering column lock and unlock by motor



### Passive Engine Start : (Registered smart key with driver)

- Engine start by button (with pressing brake pedal & shift lever "P" position)
- Ignition switch is operated by button (without pressing brake pedal)  
→ OFF → ACC → IG ON → OFF



### Limp home for Engine Start : (Smart key battery discharged, Error of SMK system)

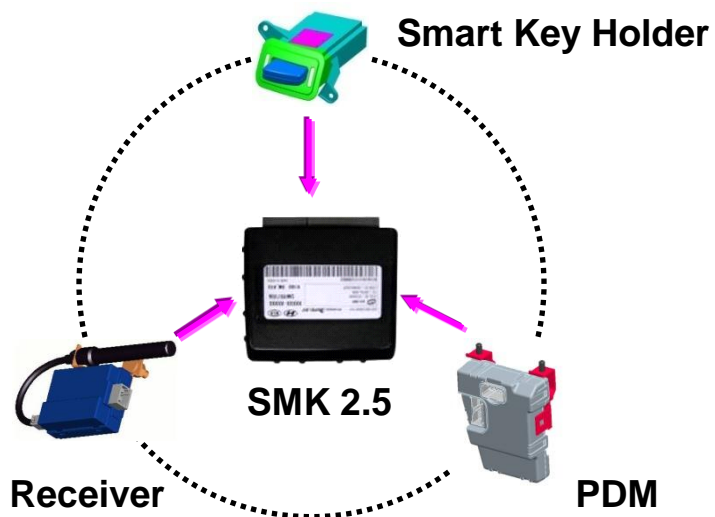
- **SMK 1.0** : Smart key insert to key holder and press start button (TD, HM, XM, AM)
- **SMK 2.0** : Smart key insert to key holder and press start button (TF, SL)
- **SMK 2.5** : Touch smart key on the start button and then press the start button (TA, QB/UB)



# Smart Key System

## Comparisons (SMK1.0 / 2.0 / 2.5)

ITEM	SMK 2.5	SMK 2.0
PDM	Deleted (Integrated SMK module)	Integrated SMK
Smart Key Holder		Applied
RF Receiver		Applied
Powertrain CAN Line	SMK 2.5 Module directly connected	←





# Smart Key System

## Block Diagram (SMK1.0)

