

PowerTech™ 4.5 L and 6.8 L Non-Certified and Tier 1 Certified OEM Diesel Engines

OPERATOR'S MANUAL PowerTech™ 4.5 L and 6.8 L Non-Certified and Tier 1 Certified OEM Diesel Engines

OMRG25204 Issue 02Nov06 (ENGLISH)

CALIFORNIA
Proposition 65 Warning

Diesel engine exhaust and some of its constituents are known to the State of California to cause cancer, birth defects, and other reproductive harm.

If this product contains a gasoline engine:

 **WARNING**

The engine exhaust from this product contains chemicals known to the State of California to cause cancer, birth defects or other reproductive harm.

The State of California requires the above two warnings.

John Deere Power Systems
LITHO IN U.S.A.

Introduction

Foreword

This manual contains information to operate and service the following 4.5 L & 6.8 L non-certified and Tier 1¹ emission certified OEM engines built at Dubuque Iowa (T0), Saran France (CD) and Torreon Mexico (PE) from 1996 on. These engines have mechanically-controlled fuel systems.

SARAN BUILT NON-CERTIFIED ENGINES

- CD4045DF120
- CD4045TF120
- CD4045TF220
- CD4045HF120
- CD6068TF120
- CD6068TF220
- CD6068HF120

TORREON BUILT NON-CERTIFIED ENGINES

- PE4045TF120
- PE4045TF220
- PE4045HF120
- PE6068TF120
- PE6068TF220
- PE6068HF120

DUBUQUE BUILT NON-CERTIFIED ENGINES

- T04045DF120
- T04045TF120
- T04045TF220
- T04045HF120

SARAN BUILT TIER 1 CERTIFIED ENGINES

- CD4045DF150
- CD4045DF151
- CD4045DF152
- CD4045DF153
- CD4045DF154
- CD4045DF157
- CD4045DF158

- CD4045TF150
- CD4045TF152
- CD4045TF154
- CD4045TF155
- CD4045TF157
- CD4045TF158
- CD4045TF161
- CD4045TF162
- CD4045TF250
- CD4045TF251
- CD4045TF252
- CD4045TF253
- CD4045TF257
- CD4045TF258
- CD4045HF150
- CD4045HF152
- CD4045HF157
- CD4045HF158
- CD4045HF252
- CD6068DF150
- CD6068TF150
- CD6068TF151
- CD6068TF152
- CD6068TF157
- CD6068TF158
- CD6068TF159
- CD6068TF250
- CD6068TF251
- CD6068TF257
- CD6068TF258
- CD6068HF150
- CD6068HF157
- CD6068HF158
- CD6068HF250
- CD6068HF252
- CD6068HF254
- CD6068HF258

TORREON BUILT TIER 1 CERTIFIED ENGINES

- PE4045DF150
- PE4045TF150

¹Emission certified for United States as EPA Tier 1 and European Union as Stage 1.

- PE4045TF151
- PE4045HF150
- PE4045HF252
- PE6068DF150
- PE6068TF150
- PE6068TF151
- PE6068TF250
- PE6068HF150
- PE6068HF250

DUBUQUE BUILT TIER 1 CERTIFIED ENGINES

- T04045DF150
- T04045DF151
- T04045DF152
- T04045DF153
- T04045TF150
- T04045TF151
- T04045TF152
- T04045TF250
- T04045TF251
- T04045HF120
- T04045HF150
- T06068DF150
- T06068TF150
- T06068TF151
- T06068TF250
- T06068HF150
- T06068HF250

NOTE: Before 2005, all Non-certified and Tier 1 Certified Saran built engines used the following serial number sequences:

- (CDxxxxD500000) - (CDxxxxD799999)
- (CDxxxxT500000) - (CDxxxxT799999)
- (CDxxxxH500000) - (CDxxxxH799999)

Since 2005, non-certified engines have the seventh digit of the serial number as "B" while Tier 1 certified engines have the seventh digit as "C".

READ THIS MANUAL carefully to learn how to operate and service your engine correctly. Failure to do so could result in personal injury or equipment damage.

THIS MANUAL SHOULD BE CONSIDERED a permanent part of your engine and should remain with the engine when you sell it.

MEASUREMENTS IN THIS MANUAL are given in both metric and customary U.S. unit equivalents. Use only correct replacement parts and fasteners. Metric and inch fasteners may require a specific metric or inch wrench.

RIGHT-HAND AND LEFT-HAND sides are determined by standing at the drive or flywheel end (rear) of the engine and facing toward the front of the engine.

WRITE ENGINE SERIAL NUMBERS and option codes in the spaces indicated in the Record Keeping Section. Accurately record all the numbers. Your dealer also needs these numbers when you order parts. File the identification numbers in a secure place off the engine.

SETTING FUEL DELIVERY beyond published factory specifications or otherwise overpowering will result in loss of warranty protection for this engine.

CERTAIN ENGINE ACCESSORIES such as radiator, air cleaner, and instruments are optional equipment on John Deere OEM Engines. These accessories may be provided by the equipment manufacturer instead of John Deere. This operator's manual applies only to the engine and those options available through the John Deere distribution network.

NOTE: This operators manual covers only engines provided to OEM (Outside Equipment Manufacturers). For engines in Deere machines, refer to the machine operators manual.

Engine Owner

John Deere Engine Owner:

Don't wait until you need warranty or other service to meet your local John Deere Engine Distributor or Service Dealer. To register your engine for warranty via the Internet, use the following URL:

<http://www.johndeere.com/enginewarranty>

Learn who your dealer is and where he is. At your first convenience, go meet him. He'll want to get to know you and to learn what your needs might be.

Aux Utilisateurs De Moteurs John Deere:

N'attendez pas d'être obligé d'avoir recours à votre concessionnaire John Deere ou au point de service le plus proche pour vous adresser à lui. Pour enregistrer votre moteur pour la garantie via Internet, utilisez l'adresse suivante:

<http://www.johndeere.com/enginewarranty>

Renseignez-vous dès que possible pour l'identifier et le localiser. A la première occasion, prenez contact avec lui et faites-vous connaître. Il sera lui aussi heureux de faire votre connaissance et de vous proposer ses services le moment venu.

An Den Besitzer Des John Deere Motors:

Warten Sie nicht auf einen evt. Reparaturfall, um den nächstgelegenen John Deere Händler kennen zu lernen. Zur Registrierung Ihres Motors für die Garantie dient folgende Internet-Adresse:

<http://www.johndeere.com/enginewarranty>

Machen Sie sich bei ihm bekannt und nutzen Sie sein "Service Angebot".

Proprietario del motore John Deere:

Non aspetti fino al momento di far valere la garanzia o di chiedere assistenza per fare la conoscenza del

distributore dei motori John Deere o del concessionario che fornisce l'assistenza tecnica. Per registrare via Internet la garanzia del suo motore, si colleghi al seguente sito URL:

<http://www.johndeere.com/enginewarranty>

Lo identifichi e si informi sulla sua ubicazione. Alla prima occasione utile lo contatti. Egli desidera fare la sua conoscenza e capire quali potrebbero essere le sue necessità.

Propietario De Equipo John Deere:

No espere hasta necesitar servicio de garantía o de otro tipo para conocer a su Distribuidor de Motores John Deere o al Concesionario de Servicio. Registre su motor para la garantía en la siguiente dirección de internet: <http://www.johndeere.com/enginewarranty>

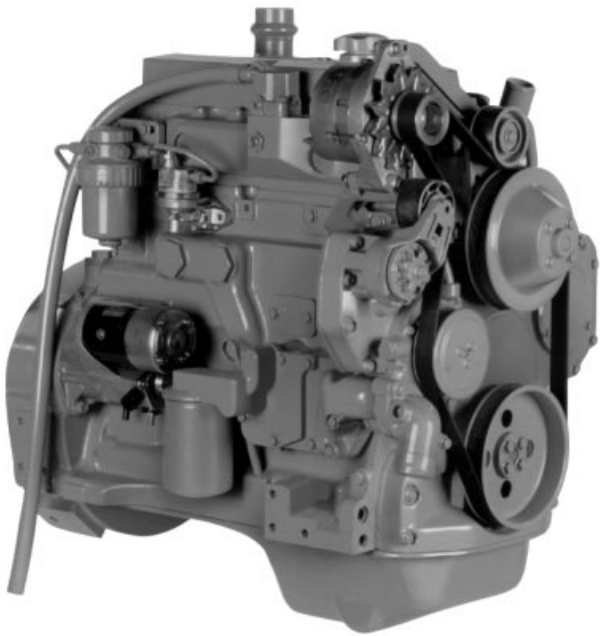
Entérese de quién es, y dónde está situado. Cuando tenga un momento, vaya a visitarlo. A él le gustará conocerlo, y saber cuáles podrían ser sus necesidades.

Till ägare av John Deere motorer:

Ta reda på vem din återförsäljare är och besök honom så snart tillfälle ges. Vänta inte tills det är dags för service eller eventuellt garantiarbete. Din motor garantiregistrerar Du via Internet på <http://www.johndeere.com/enginewarranty>

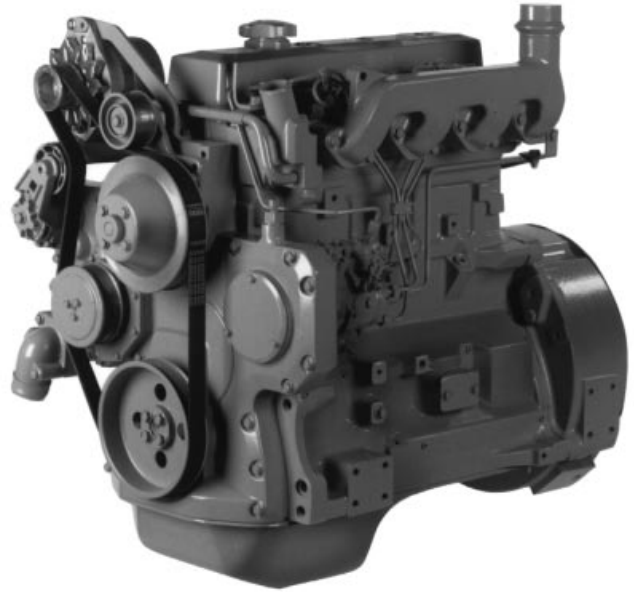
Din återförsäljare vill mycket gärna träffa dig för att lära känna dina behov och hur bäst han kan hjälpa dig.

POWERTECH® 4.5 L Engines With Mechanical Controls (Tier 1 Emission Certified)



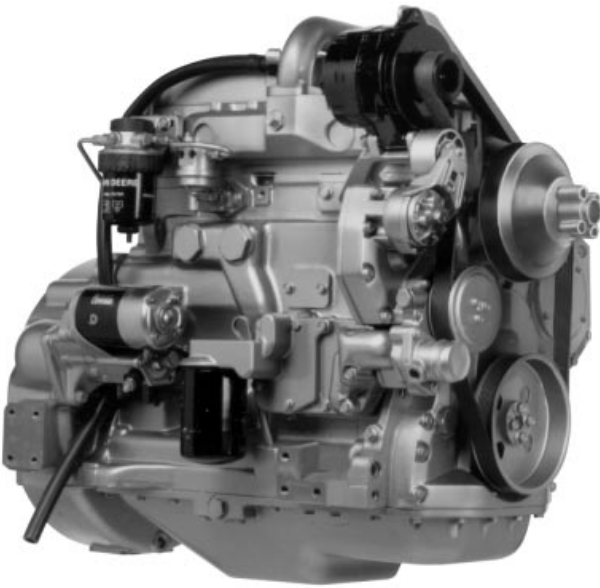
4045D Engine

RG7999 -UN-19JUN00



4045D Engine

RG7998 -UN-19JUN00



4045T Engine

RG7996 -UN-19JUN00



4045T Engine

RG7997 -UN-19JUN00

POWERTECH® 6.8 L Engines With Mechanical Controls (Tier 1 Emission Certified)



6068D Engine

RG8003 -UN-19JUN00



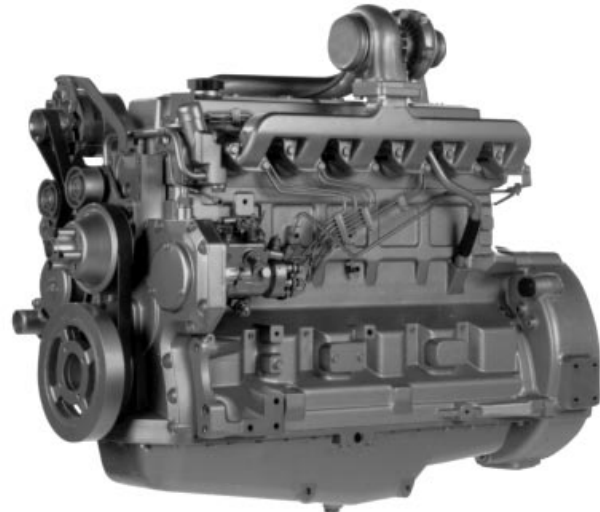
6068D Engine

RG8002 -UN-19JUN00



6068T Engine

RG8001 -UN-19JUN00



6068T Engine

RG8000 -UN-19JUN00

Contents

	Page	Page
Record Keeping		
PowerTech Medallion	01-1	
Engine Serial Number Plate	01-1	
Record Engine Serial Number	01-2	
Engine Option Codes	01-3	
Record Fuel Injection Pump Model Number	01-5	
Safety 05-1		
Fuels, Lubricants, and Coolant		
Diesel Fuel	10-1	
Lubricity of Diesel Fuel	10-1	
Handling and Storing Diesel Fuel	10-2	
Testing Diesel Fuel	10-2	
Bio-Diesel Fuel	10-3	
Aviation (Jet) Fuels	10-4	
Burner Fuels	10-4	
Minimizing the Effect of Cold Weather on Diesel Engines	10-5	
Diesel Engine Break-In Oil	10-6	
Diesel Engine Oil	10-7	
Extended Diesel Engine Oil Service Intervals	10-8	
Mixing of Lubricants	10-8	
OILSCAN™ and COOLSCAN™	10-9	
Alternative and Synthetic Lubricants	10-9	
Lubricant Storage	10-10	
Oil Filters	10-10	
Grease	10-11	
Diesel Engine Coolant	10-12	
Drain Intervals for Diesel Engine Coolant	10-13	
Additional Information About Diesel Engine Coolants and Supplemental Coolant Additives	10-14	
Supplemental Coolant Additives	10-15	
Additional Information About Diesel Engine Coolants and Supplemental Coolant Additives	10-16	
Testing Diesel Engine Coolant	10-17	
Operating in Warm Temperature Climates	10-18	
Disposing of Coolant	10-18	
Engine Operating Guidelines		
Instrument (Gauge) Panels	15-1	
Instrument (Gauge) Panel (North America)	15-2	
VDO Instrument (Gauge) Panel (Except North America)	15-4	
Engine Break-In Service	15-6	
Auxiliary Gear Drive Limitations	15-9	
Generator Set (Standby) Applications	15-9	
Starting the Engine	15-10	
Warming Engine	15-12	
Normal Engine Operation	15-13	
Cold Weather Operation	15-14	
Changing Engine Speed	15-15	
Avoid Excessive Engine Idling	15-15	
Stopping the Engine	15-16	
Using a Booster Battery or Charger	15-17	
Lubrication and Maintenance		
Observe Service Intervals	20-1	
Use Correct Fuels, Lubricants, and Coolant	20-1	
Lubrication and Maintenance Service Interval Chart—Standard Industrial Engines	20-2	
Lubrication and Maintenance Service Interval Chart—Generator (Standby) Applications	20-4	
Lubrication & Maintenance/Daily		
Daily Prestarting Checks	25-1	
Lubrication & Maintenance/250 Hour/6 Month		
Servicing Fire Extinguisher	30-1	
Changing Engine Oil and Replacing Filter	30-2	
Checking Engine Mounts	30-4	
Servicing Battery	30-5	
Manual Belt Tensioner Adjustment	30-7	
Manual Belt Tensioner Adjustment Using Belt Tension Tool (Alternate Method For Engines Without Auxiliary Drive)	30-8	
Lubrication & Maintenance/500 Hour/12 Month		
Cleaning Crankcase Vent Tube	35-1	
Checking Air Intake System	35-2	
Replacing Fuel Filter Element (Single Filter)	35-3	

Continued on next page

All information, illustrations and specifications in this manual are based on the latest information available at the time of publication. The right is reserved to make changes at any time without notice.

COPYRIGHT © 2006
DEERE & COMPANY
Moline, Illinois
All rights reserved
A John Deere ILLUSTRATION® Manual
Previous Editions
Copyright © 1996, 2000, 2002, 2004

Page

Page

Replacing Fuel Filter Elements (Dual Filters) . . . 35-5
 Checking Belt Tensioner Spring Tension
 and Belt Wear (Automatic Tensioner) 35-6
 Checking Engine Speeds 35-9
 Checking Engine Electrical Ground
 Connections 35-9
 Checking Cooling System. 35-10
 Replenishing Supplemental Coolant
 Additives (SCAs) Between Coolant
 Changes 35-11
 Testing Diesel Engine Coolant 35-12
 Pressure Testing Cooling System. 35-13

Lubrication & Maint./2000 Hour/24 Month

Adjusting Variable Speed (Droop) on
 Generator Set Engines 40-1
 Checking Crankshaft Vibration Damper
 (6-Cylinder Engine Only). 40-3
 Flushing and Refilling Cooling System 40-4
 Testing Thermostats Opening Temperature 40-7
 Check and Adjust Valve Clearance 40-10

Service as Required

Additional Service Information 45-1
 Do Not Modify Fuel System 45-1
 Adding Coolant. 45-2
 Replacing Single Stage Air Cleaner 45-3
 Replacing Axial Seal Air Cleaner Filter
 Element 45-4
 Replacing Radial Seal Air Cleaner Filter
 Element 45-6
 Replacing Fan and Alternator Belts 45-8
 Checking Fuses In Instrument Panels 45-9
 Checking Air Compressors 45-10
 Bleeding the Fuel System. 45-11

Troubleshooting

General Troubleshooting Information 50-1
 Engine Wiring Diagram Legend
 (Standard Instrument Panel For North
 America). 50-3
 Wiring Diagram (Standard Instrument
 Panel For North America) 50-4
 Engine Wiring Diagram—VDO
 Instrument Panel (Except North America) 50-5
 Engine Wiring Diagram Legend—VDO
 Instrument Panel (Except North America) 50-6
 Engine Troubleshooting 50-7

Storage

Engine Storage Guidelines 55-1
 Preparing Engine for Long Term Storage 55-2
 Removing Engine from Long Term Storage 55-3

Specifications

General OEM Engine Specifications—4.5 L
 Engines. 60-1
 General OEM Engine Specifications—6.8 L
 Engines. 60-2
 Engine Power Ratings And Fuel Injection
 Pump Specifications 60-3
 Engine Crankcase Oil Fill Quantities 60-11
 Unified Inch Bolt and Screw Torque Values . . . 60-15
 Metric Bolt and Screw Torque Values. 60-16

Lubrication and Maintenance Records

Using Lubrication and Maintenance Records . . . 65-1
 Daily (Prestarting) Service 65-1
 250 Hour/6 Month Service 65-2
 500 Hour/12 Month Service 65-3
 2000 Hour/24 Month Service 65-4
 Service as Required 65-5

Emission System Warranty

U.S. EPA Emissions Control Warranty
 Statement 70-1
 Emissions Control System Certification Label. . . 70-1

Record Keeping

POWERTECH[®] Medallion

A medallion is located on the rocker arm cover which identifies each engine as a John Deere *POWERTECH*[®] engine.



RG11608 -UN-17OCT01



RG11609 -UN-17OCT01

POWERTECH is a trademark of Deere & Company.

RG, RG34710, 5505 -19-04JAN02-1/1

Engine Serial Number Plate

Each engine has a 13-digit John Deere engine serial number. The first two digits identify the factory that produced the engine:

- "T0" indicates the engine was built in Dubuque, Iowa
- "CD" indicates the engine was built in Saran, France
- "PE" indicates the engine was built in Torreón, Mexico
- "J0" indicates the engine was built in Rosario, Argentina

Your engine's serial number plate (A) is located on the right-hand side of cylinder block behind the fuel filter.



RG8007 -UN-15JAN99

13-Digit Engine Serial Number Plate

RG, RG34710, 5506 -19-04JAN02-1/1

Record Engine Serial Number

Record all of the numbers and letters found on your engine serial number plate in the spaces provided below.

This information is very important for repair parts or warranty information.

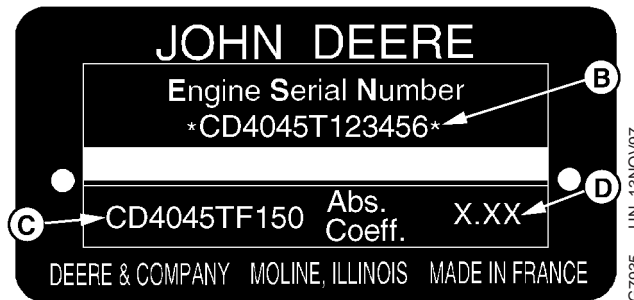
Engine Serial Number (B)

Engine Model Number (C)

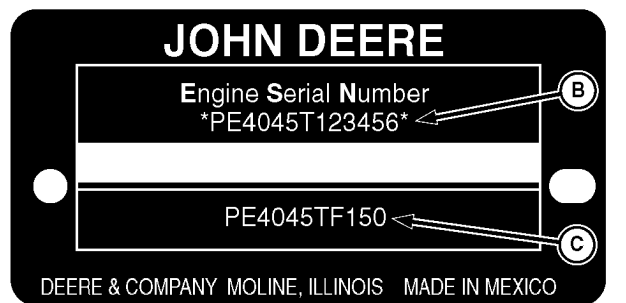
Coefficient of Absorption Value (D)
(Saran Engines Only)



Dubuque Engine Serial Number Plate



Saran Engine Serial Number Plate



Torreon Engine Serial Number Plate

RG, RG34710, 5507 -19-04JAN02-1/1