

950J CRAWLER DOZER



JOHN DEERE

PARTS CATALOG

950J CRAWLER DOZER

PC9550 (Feb-07) English

Worldwide Construction and Forestry Division

Worldwide Edition
Litho in U.S.A. (Revised)
COPYRIGHT © 2007
DEERE & COMPANY
Moline, Illinois
All rights reserved

INTRODUCTION AND CUSTOMER INFORMATION

T216510A -UN-19OCT05



*SIDE VIEW OF JOHN DEERE 950J CRAWLER BULLDOZER
(MANUFACTURED 2006-)*

TO THE CUSTOMER

THE PART NUMBERS IN THIS PARTS CATALOG WERE CORRECT AT THE TIME YOUR CATALOG WAS PUBLISHED. IT IS OUR POLICY TO CONSTANTLY IMPROVE OUR MACHINES AND, THEREFORE, PART NUMBERS MAY CHANGE. WHEN ORDERING PARTS, VERIFY PART NUMBERS THROUGH YOUR DEALER

(SPECIFICATIONS AND DESIGN SUBJECT TO CHANGE WITHOUT NOTICE.)

SERIAL NUMBER LOCATIONS

EACH 950J HAS TWO SERIAL NUMBER PLATES. ONE FOR THE PRODUCT IDENTIFICATION NUMBER AND **ONE FOR THE ENGINE.**

THE PRODUCT IDENTIFICATION PLATE IS LOCATED ON THE L.H. SIDE OF THE FRAME IN FRONT OF THE ENGINE DOOR.

THE ENGINE SERIAL NUMBER IS A TEN DIGIT NUMBER (XXXX XX XXXX) LOCATED ON THE ENGINE INFORMATION PLATE WHICH IS FOUND ON THE INTAKE MANIFOLD.

LEFT SIDE AND RIGHT SIDE, FRONT AND REAR OF THE DOZER ARE VIEWED BY FACING IN THE DIRECTION OF DOZER FORWARD TRAVEL.

WHENEVER SERIAL NUMBERS ARE REQUIRED ON WARRANTY CLAIMS OR CORRESPONDENCE PERTAINING TO THIS PRODUCT, IT IS EXTREMELY IMPORTANT THAT ALL CHARACTERS BE FURNISHED. THIS POINT CANNOT BE OVEREMPHASIZED.

SERIAL NUMBER LISTING INFORMATION

SERIAL NUMBER INFORMATION IS LISTED TO SHOW ON WHICH MACHINES EACH PART CAN BE USED; FOR EXAMPLE:

- THE PART CAN BE USED ON ALL MACHINES.
- 000000- THE PART CAN BE USED ON ALL MACHINES BEGINNING WITH THE SERIAL NUMBER LISTED.
- 000000 THE PART CAN BE USED ON ALL MACHINES UP TO AND INCLUDING THE SERIAL NUMBER LISTED.
- 000000-000000 THE PART CAN BE USED ON ALL MACHINES BETWEEN AND INCLUDING THE SERIAL NUMBERS LISTED.

WHEN XXXXXX'S ARE LISTED IN PLACE OF A SERIAL NUMBER, A SERIAL NUMBER CHANGE WAS MADE BUT THE EXACT SERIAL NUMBER WAS NOT AVAILABLE WHEN THE CATALOG WAS PRODUCED.

BOX-ENCLOSED ILLUSTRATIONS

A KEY NUMBER, SHOWN IN THE PARTS LIST, IS ASSIGNED TO A BOX ENCLOSING ALL PARTS SOLD AS A SERVICE ASSEMBLY.

COMPLETE GOODS LISTINGS

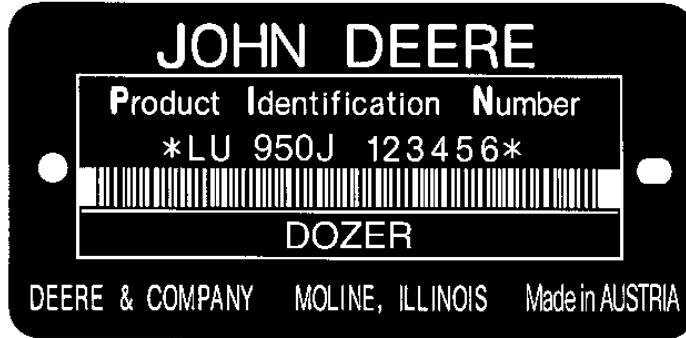
COMPLETE GOODS ARE LISTED IN BOLD FACE TYPE. ORDER SEPARATELY. DO NOT INCLUDE ON REPLACEMENT PARTS ORDER.

SI UNITS OF MEASURE

METRIC DIMENSIONS ARE GIVEN, WHERE APPLICABLE, THROUGHOUT THIS PARTS CATALOG.

PRODUCT IDENTIFICATION NUMBER

TX1004233 -UN-13MAR06



TX1004233

- | | |
|-------------------------------------|-------------------|
| 1. DESIGNATES CRAWLER MANUFACTURER | LU - LIEBHERR |
| 2. DESIGNATES CRAWLER MODEL | 950J |
| 3. DESIGNATES CRAWLER CONFIGURATION | J |
| 4. DESIGNATES CRAWLER SERIAL NUMBER | 123456 |
| 5. DESIGNATES UNIT TYPE | CRAWLER BULLDOZER |

REMARKS AND ABBREVIATIONS

TX1007193

-UN-04MAY06

PHRASE	ENGLISH	FRANCAIS	DEUTSCH	ITALIANO	ESPAÑOL	SVENSKA
ALSO ORDER, ORD W/	Also order	Commander aussi	Ebenso bestellen	Ordinare anche	Pedir también	Beställ även
AMP	Ampere	Ampère	Ampere	Ampere	Amperio	Ampere
APPL, APPL ONLY	This application only	Uniquement pour cette utilisation	Nur für diese Anwendung	Solo per questa applicazione	Solo para este propósito	Endast för denna användning
AR	As required	Selon le besoin	Nach Bedarf	Secondo necessità	Según necesidad	Vid behov
ASSY	Complete assembly	Ensemble complet	Kompl.-Zusammenbau	Gruppo completo	Montaje completo	Komplett montering
CA, CONVENIENCE ASSY	Convenience assembly	Ensemble convenance	Komfort-Zusammenbau	Montaggio pratico	Montaje de conveniencia	Lämplig montering
CCW	Counter-clockwise	Sens anti-horaire	Gegen Uhrzeigersinn	Senso antiorario	A la izquierda	Moturs
COMPLETE	Complete	Complet	Vollständig	Completo	Completo	Fullständig
COMPLETE GOODS	Complete goods	Compléter marchandises	Vollst. Waren	Merci complete	Mercancías completas	Kompleta varor
CTL CUT TO LENGTH	Cut to length	Couper à la longueur	Auf Länge zurechtschneiden	Tagliare alla lunghezza	Corte a la longitud	Skära till längd
CW	Clockwise	Sens horaire	Im Uhrzeigersinn	In senso orario	A la derecha	Medurs
FOR	For	Pour	Für	Per	Para	För
FRONT	Front	Avant	Vorn	Anteriore	Frente	Fram
GAS	Gasoline	Essence	Benzin	Benzina	Gasolina	Bensin
HP	Horsepower	Puissance en cv	Leistung	Potenza	Potencia	Hästkraft
HFWD	Hydraulic Front-wheel Drive	Traction Avant Hydraulique	Hydraulischer Vorderradantrieb	Trazione Anteriore Idraulica	Traccion Delantera Hidraulica	Hydraulisk Framhjulsdraft
HS, HEAD MARKED	High strength, head marked	Haute résistance, tête marquée	Hochfest, vorn gekennzeichnet	Contrassegnato in testa, ad alta resistenza	Alta fuerza, marca en cabeza	Hög styrka, huvudmärkt
ID	Inside diameter	Diamètre intérieur	Innendurchmesser	Diametro interno	Diá. interior	Innerdiameter
INCH	Inch	Pouce	In.	Pollice	Pulg.	Tum
INCL KEYS	Includes keys...	Comprend les positions...	Einschließlich Schlüssel...	Include le chiavette...	Incluye posiciones...	Inklusive nycklar...
INCL, INCLUDES	Includes...	Comprend...	Enthält...	Include...	Incluye...	Inkluderar...
INCLUDES PARTS/ ITEMS MARKED	Includes parts/items marked...	Comprend les pièces/articles marqués...	Enthält gekennzeichnete Teile/Pos. ...	Include i pezzi e gli elementi contrassegnati...	Incluye piezas marcadas...	Inkluderar markerade delar/artiklar...
INNER	Inner	Intérieur	Innerer	Interno	Interno	Inre, invändig
KIT	Kit	Kit	Kit	Kit	Juego	Sats
L	Number of links	Nombre de maillons	Anzahl der Glieder	Numero di maglie	Nº de eslabones	Antal länkar
LGTH	Length	Longueur	Länge	Lunghezza	Longitud	Längd
LGP	Low Ground Pressure	Faible Pression Au Sol	Niederer Bodendruck	Bassa Pressione Sul Suolo	Baja Presion Sobre El Suelo	Laagt Marktryck
LH	Left-hand	Gauche	Links	Sinistra	Izquierda	Vänster
LT	Long Track	Chenille Longue	Mit Langem Laufwerk	Cingolo Lungo	Cadena Largo	Laangt Larvband
LOW, LOWER	Lower	Inférieur	Unterer	Inferiore	Inferior	Nedre
MAKE FROM, MF MARKED	Make from Marked	Faireavec Marqué	Herstellen von Markiert	Fabbricare da Contrassegnato	Hacer de Marcado	Tillverka av Märkt

TX1007193

REMARKS AND ABBREVIATIONS

TX1007195

-UN-04MAY06

PHRASE	ENGLISH	FRANCAIS	DEUTSCH	ITALIANO	ESPAÑOL	SVENSKA
MATCHED SET	Matched set	Ensemble assorti	Passender Satz	Set abbinato	Sistema emparejado	Anpassad sats
MFWD	Mechanical Front-Wheel Drive	Pont Avant	Allradantrieb	Ruota Motrice Meccanica Anteriore	Traccion Delantera Mecanica	Mekanisk Framhjulsdrift
NA, NOT USED THIS APPL	Not used this application	Ne sert pas pour cette application	In dieser Anwendung nicht benutzt	Non usato in questa applicazione	No se usa en esta aplicación	Ej använd i detta sammanhang
NLA	No longer available	Épuisé	Nicht mehr lieferbar	Non più disponibile	Descontinuado	Ej längre tillgänglig
NSEP	Not supplied separately	Non livré séparément	Nicht einzeln lieferbar	Non fornito separatamente	No se suministra por separado	Kan ej erhållas separat
OD	Outside diameter	Diamètre extérieur	Außendurchmesser	Diametro esterno	Diá. exterior	Ytterdiameter
OPTIONAL	Optional	En option	Wahlweise	Opzionale	Opcional	Valfri
OR	Or	Ou	Oder	Oppure	O	Eller
ORD, ORDER	Order	Commander	Bestellen	Ordinare	Pídase	Order
OS	Oversize	Sur-dimension	Übergröße	Maggiorato	Sobretamaño	Överdimension
OUTER	Outer	Externe	Äußerer	Esterno	Externo	Yttre, utvändig
PKG, PACKG	Package, Packet of	Emballage, paquet de	Verpackung, verpackt mit	In confezione da	Paquete de	I sats; paket
PTO	Power Take Off	Prise De Force	Zapfwelle	Preso Di Forza	Toma De Fuerza	Kraftuttag
RATIO	Ratio	Rapport	Übersetzungs-verhältnis	Rapporto	Índice	Förhållande
REAR	Rear	Arrière	Hinten	Posteriore	Trasero	Bak; bakre
REMAN	Remanufactured	Echange Standard	Generalveberholt	Refatto	Refabricador por	Renoverad
REPL	Replaces	Remplace	Ersetzt	Sostituisce	Sustituye	Ersätter
RH	Right-hand	Droit	Rechts	Destra	Derecha	Höger
SN	Serial number	Numéro de série	Seriennummer	Numero di serie	Nº de serie	Seriennummer
STD	Standard	Standard	Standard	Standard	Normal	Standard
SUB	Replaced by	Remplacé par	Ersetzt durch	Sostituito da	Sustituido por	Ersatt med
SUB COMPONENTS	Substitute components (of the kit or assy)	Substituer les composants (du kit ou de l'ensemble)	Komponenten ersetzen (des Kits oder der Baugruppe)	Sostituire i componenti (del kito del gruppo)	Sustituir los componentes	Ersätta komponenterna (i satsen eller monteringen)
SUB FOR	Substitutes for	Remplace	Ersatz für	Sostituisce	Sustitución para	Ersätter
TEETH, Z	Number of gear teeth	Nombre de dents d'engrenages	Zahl der Zahnradzähne	Numero di denti dell'ingranaggio	Nº de dientes de engranaje	Antal redskapständer
TK	Thickness	Épaisseur	Stärke	Spessore	Espesor	Tjocklek
UP, UPPER	Upper	Supérieur	Oberer	Superiore	Superior	Övre
US	Undersize	Sous-dimension	Untergröße	Minorato	Subtamaño	Underdimension
USE WITH	Use with	À utiliser avec	Verwenden mit	Usare con	Usar con	Använd med
USE UNTIL EXHAUSTED	Use until exhausted	Utilisation jusqu'à épuisé	Verwenden, bis erschöpft	Usare fino all'esaurimento	Usar hasta agotar	Använda till uttömd
W/	With	Avec	Mit	Con	Con	Med; inklusive
W/O	Without	Sans	Ohne	Senza	Sin	Utän; exklusive
WHOLE GOODS	Whole goods	Marchandises entières	Vollständige Waren	Merci intere	Mercancías enteras	Hela varor
XLT	Extra Long Track	Chenille Extra Longue	Mit Extra Langem Laufwerk	Cingolo Extra Lungo	Cadena Extra Larga	Extra Laangt Larvband
VEC	Vehicle Electronic Controller	Controlleur Electronique Du Vehicule	Elektronisches Steuergeraet Des Fahrzeugs	Unità Di Comando Electronica Del Veicolo	Unidad de Control Electronico del Vehiculo	Elektronisk Fordonsstyrenhet
VLC	Vehicle Load Center	Coffret De Repartition Du Vehicule	Verteilerstation Des Fahrzeugs	Centro Di Carico Del Veicolo	Centro De Cargas Del Vehiculo	Fordonets Eicentral

TX1007195

ALPHABETICAL INDEX

	PAGE		PAGE	
A				
A/C AND HEATER VENT.....	1812-6	ANTI-CAVITATION PRESSURE RELIEF VALVE		
A/C COMPRESSOR, BELT, BRACKET, AND BELT		MAIN HYDRAULIC CONTROL VALVE.....	2160-28	
TENSIONER	1832-2	ANTI-CAVITATION PRESSURE RELIEF VALVE		
A/C CONDENSER ATTACHING HARDWARE.....	1833-4	MAIN HYDRAULIC CONTROL VALVE.....	2160-30	
A/C CONDENSER GRILLE	1810-10	ARM, WINDSHIELD WIPER.....	1814-10	
A/C CONDENSER PRESSURE SWITCH	1833-6	ARMREST, OPERATOR'S SEAT	1821-2	
A/C CONDENSER SEALING TRIM.....	1833-4	ARMS, ROCKER.....	0402-4	
A/C CONDENSER, CONDENSER FAN, RECEIVER		ASHTRAY.....	1812-6	
DRYER, AND HOSES.....	1833-6	ATTACHING HARDWARE, A/C CONDENSER.....	1833-4	
A/C FRESH AIR FILTER COVER	1810-18	ATTACHING HARDWARE, ENGINE COMPARTMENT		
A/C HOSES	1830-12	HOOD.....	1910-4	
ACCESS COVER, ENGINE FRONT COVER	0402-10	AUXILIARY CONTROL VALVE COMPONENTS.....	4262-2	
ACCESS COVER, FUEL TANK	0564-4	AUXILIARY CONTROL VALVE COMPONENTS.....	4263-2	
ACCESSORY RELAY	1674-14	AUXILIARY DRIVE AND FUEL PUMP.....	0421-2	
ACCUMULATOR DECAL	1322-2	AUXILIARY DRIVE GASKETS (ENGINE SEAL		
ACCUMULATOR LABEL	1322-2	KIT).....	0452-4	
ACCUMULATOR, HYDRAULIC SOLENOID		AUXILIARY DRIVE O-RINGS (ENGINE SEAL		
MANIFOLD.....	0360-22	KIT).....	0452-4	
ADAPTER PLATE, FAN DRIVE HYDRAULIC PUMP		AUXILIARY ENGINE OIL PUMP.....	0407-14	
MOUNTING.....	2160-6	AUXILIARY ENGINE OIL PUMP.....	0407-16	
ADAPTER PLATE, FAN PUMP.....	2160-6	AUXILIARY ENGINE OIL PUMP GASKETS		
ADAPTER, ENGINE OIL FILTER.....	0407-10	(ENGINE SEAL KIT).....	0452-2	
ADHESIVE, CAB SLIDING REAR WINDOW	1814-6	AUXILIARY PILOT CONTROLLER BOOT, REAR	4215-2	
ADJUSTER, TRACK CHAIN TENSION		AUXILIARY PILOT CONTROLLER HANDLE, REAR	4215-2	
AND PISTON.....	0131-2	AUXILIARY PILOT CONTROLLER HYDRAULIC		
AIR CLEANER ASSEMBLY	0520-2	HOSES, REAR.....	4215-2	
AIR CLEANER CANISTER ASSEMBLY	0520-2	AUXILIARY PILOT CONTROLLER ROD	4215-2	
AIR CLEANER ELEMENT	0520-2	AUXILIARY PILOT CONTROLLER SHAFT	4215-2	
AIR CLEANER HOSES AND PIP	0520-2	AUXILIARY PILOT CONTROLLER, REAR.....	4215-2	
AIR CONDITIONER CLAMPS.....	1830-6	AUXILIARY SECTION HYDRAULIC CONTROL		
AIR CONDITIONER COMPONENT PARTS	1830-8	VALVE.....	4262-2	
AIR CONDITIONER COMPRESSOR, BELT,		AUXILIARY SECTION HYDRAULIC CONTROL		
BRACKET AND BELT TENSIONER	1832-2	VALVE.....	4263-2	
AIR CONDITIONER CONDENSER FAN RELAY.....	1674-14	AUXILIARY SECTION HYDRAULIC OIL MANIFOLD	4263-2	
AIR CONDITIONER FITTINGS	1830-6	AXLE, TRACK CHAIN IDLER	0134-2	
AIR CONDITIONER FITTINGS	1830-12			
AIR CONDITIONER HOSES	1830-6	B		
AIR CONDITIONER HOSES	1830-12	BACKREST EXTENSION, SEAT	1821-2	
AIR CONDITIONER PLUMBING	1830-6	BACKUP ALARM	2004-2	
AIR CONDITIONER, CLAMPS	1830-12	BACKUP ALARM BRACKET	2004-2	
AIR CONDITIONING CONDENSER, CONDENSER		BACKUP ALARM PRESSURE SWITCH	2004-2	
FAN, RECEIVER DRYER, AND HOSES	1833-6	BACKUP ALARM WIRE HARNESS	2004-2	
AIR CONDITIONING EXPANSION VALVE.....	1830-8	BALL, LGP STRAIGHT BLADE TRUNNION	3201-8	
AIR FILTER LABEL	1322-2	BALL, SEMI-U BLADE TRUNNION	3201-6	
AIR FILTER RESTRICTION PRESSURE SWITCH.....	0520-2	BARREL, BLADE LIFT CYLINDER	3265-2	
AIR INTAKE HEATER	0414-4	BASIC SERVICE TOOLS.....	2005-2	
AIR INTAKE HOSES, ENGINE.....	0520-6	BATTERIES.....	1671-2	
AIR INTAKE MANIFOLD, ENGINE	0414-2	BATTERY	1671-2	
AIR INTAKE PIPE	0414-6	BATTERY CABLES.....	1671-2	
AIR INTAKE PIPES, ENGINE	0520-6	BATTERY POWER CABLE.....	1671-2	
AIR INTAKE RAIN CAP	0520-2	BEARING CAP, LEFT PUSH BEAM	3243-2	
AIR INTAKE, TURBOCHARGER.....	0414-6	BEARING CAP, RIGHT PUSH BEAM.....	3243-4	
AIR SUSPENSION SEAT COMPONENT PARTS.....	1821-4	BEARING CAPS, CYLINDER BLOCK MAIN	0404-4	
AIR SUSPENSION SEAT FUSE.....	1821-2	BEARING, ENGINE CONNECTING ROD	0403-2	
AIR SUSPENSION SEAT SWITCHES	1821-4	BEARING, FAN DRIVE HYDRAULIC PUMP DRIVE		
AIR SUSPENSION WIRING HARNESS.....	1821-2	SHAFT.....	2160-4	
ALARM, BACKUP	2004-2	BEARING, HYDROSTATIC PUMP.....	0360-4	
ALARM, REVERSE	2004-2	BEARING, LEFT PUSH BEAM	3243-2	
ALARM, WARNING	1674-4	BEARING, MAIN HYDRAULIC PUMP DRIVE		
ALTERNATOR.....	1672-2	SHAFT.....	2160-10	
ALTERNATOR FAN.....	1672-2	BEARING, MAINFRAME TO UNDERCARRIAGE	0135-2	
ALTERNATOR PULLEY	1672-2	BEARING, PIVOT SHAFT.....	0135-2	
ALTERNATOR RING	1672-2	BEARINGS / CRANKSHAFT	0401-2	
ANTENNA, RADIO	2001-2	BEARINGS, BLADE LIFT CYLINDER YOKE.....	3201-2	
		BEARINGS, CROSSBAR.....	0135-4	

ALPHABETICAL INDEX - CONTINUED

	PAGE		PAGE
BEARINGS, RIGHT PUSH BEAM	3243-4	BRAKE PEDAL AND COMPONENT PARTS	1011-2
BELLY PANS, MAIN FRAME	1746-2	BRAKE PEDAL ASSEMBLY	1011-2
BELT PULLEY, ALTERNATOR	1672-2	BRAKE, FINAL DRIVES	0201-2
BELT TENSIONER COMPONENTS, AIR CONDITIONER CONDENSER	1832-2	BRAKE, PARK.....	1812-4
BELT, A/C COMPRESSOR.....	1832-2	BREAKER POWER SUPPLY, CIRCUIT.....	1671-2
BELT, SAFETY	1821-2	BREATHER LINES, ENGINE CRANKCASE.....	0407-4
BELT, SERPENTINE, (WITH A/C).....	1832-2	BREATHER, ENGINE CRANKCASE.....	0407-4
BIAS PISTON, MAIN HYDRAULIC PUMP.....	2160-10	BREATHER, ENGINE FLYWHEEL HOUSING.....	0433-4
BLADE END BIT, LGP STRAIGHT BLADE	3201-8	BREATHING LINE, DUO CONE.....	2005-2
BLADE END BIT, SEMI-U BLADE.....	3201-6	BULB, CAB WORK LIGHTS (OPTIONAL).....	1673-4
BLADE FLOAT AND QUICK-DROP PRESSURE SWITCH	3215-2	BULB, DOME LIGHT.....	1674-8
BLADE FLOAT SOLENOID VALVE.....	2160-28	BULB, GRILLE MOUNTED LIGHTS.....	1673-6
BLADE LIFT CYLINDER AND COMPONENTS	3265-2	BULB, INSTRUMENT PANEL GAUGES.....	1674-6
BLADE LIFT CYLINDER BRACKETS	3263-2	BULB, STANDARD CAB LIGHTS	1673-2
BLADE LIFT CYLINDER COMPLETE.....	3263-2	BUSHING, BLADE LIFT CYLINDER YOKE.....	3201-2
BLADE LIFT CYLINDER HYDRAULIC HOSES	3263-2	BUSHING, BLADE TILT CYLINDER.....	3265-6
BLADE LIFT CYLINDER PISTON AND ROD GUIDE	3265-4	BUSHING, MAIN FRAME TO THREE SHANK RIPPER (LOWER).....	4201-4
BLADE LIFT CYLINDER YOKE	3201-2	BUSHING, MAIN FRAME TO THREE SHANK RIPPER (UPPER).....	4201-6
BLADE LIFT CYLINDER YOKE BEARINGS	3201-2	BUSHING, THREE SHANK RIPPER TO MAIN FRAME (LOWER).....	4201-4
BLADE LIFT CYLINDER YOKE BUSHING.....	3201-2	BUSHING, THREE SHANK RIPPER TO MAIN FRAME (UPPER).....	4201-6
BLADE LIFT VALVE SPOOL, MAIN HYDRAULIC CONTROL VALVE.....	2160-26	BUSHING, TRACK CHAIN IDLER.....	0134-2
BLADE LOWER CIRCUIT PRESSURE RELIEF VALVE.....	2160-28	BUSHINGS, CROSSBAR	0135-4
BLADE LOWER CIRCUIT PRESSURE RELIEF VALVE.....	2160-30	BUSHINGS, MAIN FRAME TO PLATFORM.....	1740-2
BLADE LOWER PILOT OIL CUT-OFF SOLENOID VALVE	0360-22	BUTTON, EMERGENCY STOP	1674-4
BLADE TILT CYLINDER PISTON AND ROD GUIDE.....	3265-8	BUTTON, HORN.....	2004-4
BLADE TILT HYDRAULIC CYLINDER	3265-6	BUZZER.....	1674-4
BLADE TILT HYDRAULIC HOSES	3263-4	BYPASS START LABEL.....	1322-2
BLADE TILT HYDRAULIC JUNCTION BLOCK	3263-4	BYPASS VALVE, HYDRAULIC OIL FILTER RESTRICTION	2164-2
BLADE TILT VALVE SPOOL, MAIN HYDRAULIC CONTROL VALVE.....	2160-26	BYPASS VALVE, HYDROSTATIC COOLER	0360-14
BLADE, LGP STRAIGHT.....	3201-8		
BLADE, SEMI-U.....	3201-6	C	
BLADE, WINDSHIELD WIPER.....	1814-10	CAB (COMPLETE).....	1810-2
BLOCK PLUGS, ENGINE CYLINDER.....	0404-4	CAB A/C COMPONENT PARTS.....	1830-8
BLOCK, ENGINE CYLINDER.....	0404-4	CAB ATTACHING HARDWARE	1810-2
BLOCK, RIPPER MANIFOLD.....	4263-2	CAB COMPONENTS.....	1810-10
BLOWER FAN (HEATER/AIR CONDITIONER).....	1830-10	CAB DOOR HANDLES.....	1810-6
BLOWER MOTOR SWITCH	1674-8	CAB DOOR HINGES.....	1810-4
BOOT, AIR SUSPENSION SEAT.....	1821-4	CAB DOOR LATCHES.....	1810-6
BOOT, AUXILIARY PILOT CONTROLLER, REAR	4215-2	CAB DOOR LOCK AND IGNITION SWITCH KEY	1810-6
BOOT, RIPPER CONTROL LEVER.....	4215-2	CAB DOOR LOCKS.....	1810-6
BOTTOM DOORS, ENGINE COMPARTMENT	1910-2	CAB DOORS.....	1810-4
BOTTOM GUARDS, MAIN FRAME	1746-2	CAB FLOOR MAT	1812-8
BOTTOM PLATES, MAIN FRAME.....	1746-2	CAB GROUND CABLE.....	1671-2
BOX COMPONENT PARTS, SPLITTER.....	0841-4	CAB GROUND STRAP.....	0564-4
BOX, CAB HEATER.....	1830-4	CAB HEADLINER AND INTERIOR PANELING.....	1810-12
BRACKET, BACKUP ALARM.....	2004-2	CAB HEATER BOX	1830-4
BRACKET, CAB OVERHEAD CONSOLE.....	1674-10	CAB HEATER BOX MOUNTING BRACKET.....	1830-4
BRACKET, FUEL HOSES.....	0563-2	CAB HEATER COMPONENT PARTS.....	1830-8
BRACKET, MAIN HYDRAULIC CONTROL VALVE.....	2160-24	CAB HEATER HOSES.....	1830-4
BRACKET, MOUNTING, CAB HEATER BOX.....	1830-4	CAB MOUNTED WORK LIGHTS.....	1673-2
BRACKET, PLATFORM SUPPORT	1740-2	CAB NOISE INSULATION	1810-12
BRACKET, REVERSE TRAVEL ALARM	2004-2	CAB OVERHEAD CONSOLE, BRACKET, FUSES, AND RELAYS.....	1674-10
BRACKET, TRACK ROLLER	0133-4	CAB PLATFORM.....	1812-4
BRACKET, TRUNNION, LGP.....	3243-4	CAB PLATFORM COVERS.....	1812-6
BRACKETS, BLADE LIFT CYLINDER	3263-2	CAB PLATFORM SEAT PLATE, MATS, AND SOUND INSULATION	1812-8
BRACKETS, ENGINE MOUNTING	0540-2	CAB REAR PANELING	1810-16
BRACKETS, TRACK IDLER.....	0134-2	CAB RECIRCULATION FILTER COVER	1810-18
BRAKE (CONTINUED), FINAL DRIVES	0201-4	CAB REMOVAL EYEBOLT	2005-2

ALPHABETICAL INDEX - CONTINUED

	PAGE		PAGE
CAB SEALING TRIM	1810-16	CHARGE OIL FILTER TO HYDROSTATIC PUMP	
CAB SIDE CONSOLE	1812-6	HOSES	0363-2
CAB SLIDING REAR WINDOW	1814-6	CHARGE OIL PRESSURE REGULATING MANIFOLD	0360-26
CAB SLIDING REAR WINDOW ADHESIVE	1814-6	CHARGE OIL PRESSURE REGULATING MANIFOLD	
CAB SLIDING SIDE WINDOW FRAME	1814-4	HOSES	0363-6
CAB SOUND INSULATION	1812-8	CHARGE OIL PRESSURE SWITCH	0360-24
CAB STORAGE COMPARTMENT AND A/C FRESH		CHARGE OIL PRESSURE TEST PORT AND HOSE	0363-8
AIR FILTER COVER	1810-18	CHARGE OIL PUMP PRESSURE REGULATING	
CAB TEMPERATURE CONTROL RESISTOR	1674-8	VALVE	0360-26
CAB TILT LINK	1812-12	CHARGE PRESSURE RELIEF VALVE,	
CAB TILT LOCK	1812-12	HYDROSTATIC PUMP	0360-4
CAB TILT PUMP	1812-10	CHARGE PUMP COUPLING, HYDROSTATIC	0360-12
CAB TIPPING PROCEDURE LABEL	1322-2	CHARGE PUMP HOSES	0363-6
CAB WEATHERSTRIP	1810-16	CHARGE PUMP, HYDROSTATIC	0360-12
CAB WINDOW ISOLATOR	1814-2	CHECK VALVE, HYDROSTATIC OIL COOLER	2160-16
CAB WINDOW WASHER FLUID RESERVOIR PUMP,		CHECK VALVE, HYDROSTATIC OIL COOLER	2160-18
PLUG, CAP, AND CAP KEY	1814-10	CHECK VALVE, HYDROSTATIC SOLENOID	
CAB WINDOW, SIDE SLIDING	1814-4	MANIFOLD	0360-22
CAB WINDOWS	1814-2	CIRCUIT BOARD, LOAD CENTER	1674-12
CAB WINDSHIELD	1814-2	CIRCUIT BREAKER LABEL	1322-2
CAB WIRING HARNESS	1674-8	CIRCUIT BREAKER, POWER SUPPLY	1671-2
CAB WIRING HARNESS CLAMPS	1674-20	CLAMPS, AIR CONDITIONER	1830-6
CAB WORK LIGHTS (OPTIONAL)	1673-4	CLAMPS, CAB WIRING HARNESS	1674-20
CAMSHAFT	0402-2	CLAMPS, HOSE (FUEL)	0563-2
CAMSHAFT GEARS	0402-2	CLAMPS, HOSES - HYDRAULIC	2163-12
CAMSHAFT POSITION SENSOR	0578-2	CLAMPS, HYDRAULIC HOSES (CONTINUED)	0363-12
CAP, CAB WINDOW WASHER FLUID RESERVOIR	1814-10	CLAMPS, HYDROSTATIC HOSES	0363-10
CAP, FUEL TANK	0564-4	CLAMPS, MAIN WIRING HARNESS	1674-16
CAP, SPLITTER BOX FILLER	0841-4	CLAMPS, MAIN WIRING HARNESS	1674-18
CAPS, CYLINDER BLOCK MAIN BEARING	0404-4	COAT HOOK	1810-10
CARRIER ROLLER	0133-2	COMPLETE ENGINE	0404-2
CARRIER ROLLER COVER	0133-2	COMPLETE ENGINE REPLACEMENT SEAL KIT	
CARRIER ROLLER SUPPORT	0133-2	(PAGE 1)	0452-2
CARRIER ROLLER WITH SHAFT	0133-2	COMPLETE ENGINE REPLACEMENT SEAL KIT	
CASE DRAIN FILTER MANIFOLD HOSES	0363-4	(PAGE 2)	0452-4
CASE DRAIN FILTERS	0360-14	COMPLETE ENGINE REPLACEMENT SEAL KIT	
CASE DRAIN FILTERS, HYDRAULIC OIL		(PAGE 3)	0452-6
RESERVOIR	2164-4	COMPONENTS, HYDROSTATIC MOTOR	0360-20
CASE DRAIN HOSE, MAIN HYDRAULIC PUMP	2163-4	COMPRESSOR, A/C	1832-2
CENTAFLEX COUPLING, ENGINE	0752-2	COMPRESSOR, AIR SUSPENSION SEAT	1821-4
CENTER TRACK GUIDES (LGP)	0131-4	CONDENSATION DRAIN, EVAPORATOR	
CENTER TRACK GUIDES (STANDARD MACHINE)	0131-4	(HEATER/AIR CONDITIONER)	1830-10
CHAIN BUSHINGS, TRACK	0132-2	CONDENSER FAN, A/C	1833-6
CHAIN BUSHINGS, TRACK		CONDENSER GRILLE	1810-10
(LGP)	0132-4	CONNECTING ROD BEARING, ENGINE	0403-2
CHAIN DRIVE SPROCKET, TRACK	0132-6	CONNECTING ROD, ENGINE PISTON	0403-2
CHAIN MASTER LINK, TRACK	0132-2	CONNECTORS, ELECTRICAL	1674-30
CHAIN MASTER LINK, TRACK		CONNECTORS, ELECTRICAL	
(LGP)	0132-4	(PAGE 2)	1674-32
CHAIN PINS, TRACK	0132-2	CONNECTORS, ELECTRICAL	
CHAIN PINS, TRACK		(PAGE 3)	1674-34
(LGP)	0132-4	CONNECTORS, ELECTRICAL	
CHAIN SEALS, TRACK	0132-2	(PAGE 4)	1674-36
CHAIN SEALS, TRACK		CONNECTORS, ELECTRICAL	
(LGP)	0132-4	(PAGE 5)	1674-38
CHAIN SHOE, MASTER TRACK	0132-2	CONNECTORS, ELECTRICAL	
CHAIN SHOE, MASTER TRACK		(PAGE 6)	1674-40
(LGP)	0132-4	CONNECTORS, ELECTRICAL	
CHAIN TENSION ADJUSTER AND PISTON	0131-2	(PAGE 7)	1674-42
CHAIN TENSION CAUTION LABEL	1322-2	CONNECTORS, ELECTRICAL	
CHAIN, TRACK ASSEMBLY WITHOUT SHOES	0132-2	(PAGE 8)	1674-44
CHAIN, TRACK ASSEMBLY WITHOUT SHOES		CONNECTORS, ELECTRICAL	
(LGP)	0132-4	(PAGE 9)	1674-46
CHARGE AIR PRESSURE SENSOR	0578-2	CONSOLE COVERS	1812-6
CHARGE AIR TEMPERATURE SENSOR	0578-2	CONSOLE, CAB OVERHEAD	1674-10
CHARGE OIL FILTER TO HYDROSTATIC MOTOR		CONSOLE, CAB PLATFORM	1812-6
HOSES	0363-4	CONTROL LEVER BOOT, RIPPER	4215-2

ALPHABETICAL INDEX - CONTINUED

	PAGE		PAGE
CONTROL LEVER COMPONENTS, RIPPER.....	4215-2	CRANKCASE BREATHER, ENGINE.....	0407-4
CONTROL LEVER HANDLE, RIPPER.....	4215-2	CRANKSHAFT.....	0401-2
CONTROL LEVER, RIPPER HYDRAULIC.....	4215-2	CRANKSHAFT / BEARINGS.....	0401-2
CONTROL LEVER, TRANSMISSION.....	0375-2	CRANKSHAFT DAMPENER.....	0429-2
CONTROL PISTON/CYLINDER, HYDROSTATIC PUMP.....	0360-4	CRANKSHAFT GEAR.....	0401-2
CONTROL VALVE COMPONENTS, AUXILIARY.....	4262-2	CRANKSHAFT POSITION SENSOR.....	0578-2
CONTROL VALVE COMPONENTS, AUXILIARY.....	4263-2	CRANKSHAFT PULLEY.....	0429-2
CONTROL VALVE COMPONENTS, RIPPER.....	4262-2	CRANKSHAFT RPM SENSOR.....	0578-2
CONTROL VALVE COMPONENTS, RIPPER.....	4263-2	CRANKSHAFT SEAL, ENGINE FLY WHEEL.....	0433-2
CONTROL VALVE, AUXILIARY SECTION HYDRAULIC.....	4262-2	CRANKSHAFT SEAL, ENGINE FRONT COVER.....	0402-6
CONTROL VALVE, AUXILIARY SECTION HYDRAULIC.....	4263-2	CROSSBAR.....	0135-4
CONTROL VALVE, HEATER (HEATER/AIR CONDITIONER).....	1830-10	CROSSBAR BEARINGS.....	0135-4
CONTROL VALVE, MAIN HYDRAULIC (COMPLETE).....	2160-24	CROSSBAR BUSHINGS.....	0135-4
CONTROL VALVE, PILOT.....	3215-2	CROSSBAR ISOLATOR.....	0135-4
CONTROL VALVE, RIPPER HYDRAULIC.....	4262-2	CROSSBAR PINS.....	0135-4
CONTROL VALVE, RIPPER HYDRAULIC.....	4263-2	CROSSBAR VENT VALVE.....	0135-4
CONTROLLER VALVE, RIPPER.....	4215-2	CURTAIN, SHADE.....	1810-10
CONTROLLER, AUXILIARY PILOT, REAR.....	4215-2	CUSHION, SEAT.....	1821-2
CONTROLLER, HYDRAULIC FAN DRIVE PUMP.....	2160-2	CUTTING EDGE, LGP STRAIGHT BLADE.....	3201-8
CONTROLLER, RIPPER.....	4215-2	CUTTING EDGE, STANDARD AND HEAVY DUTY SEMI-U BLADE.....	3201-6
CONTROLLER, TRANSMISSION.....	0375-2	CYLINDER BLOCK DRAIN PLUGS.....	0404-4
COOLANT MANIFOLD.....	0402-6	CYLINDER BLOCK MAIN BEARING CAPS.....	0404-4
COOLANT TEMPERATURE SENSOR.....	0578-2	CYLINDER BLOCK PLUGS, ENGINE.....	0404-4
COOLER - OIL, ENGINE.....	0419-4	CYLINDER BLOCK, ENGINE.....	0404-4
COOLER BYPASS VALVE TO CHARGE PUMP HOSE.....	0363-6	CYLINDER BLOCK, FAN DRIVE HYDRAULIC PUMP.....	2160-4
COOLER, FUEL.....	2160-20	CYLINDER BLOCK, HYDROSTATIC MOTOR.....	0360-20
COOLER, HYDRAULIC/HYDROSTATIC OIL.....	2160-16	CYLINDER BLOCK, MAIN HYDRAULIC PUMP.....	2160-10
COOLER, HYDRAULIC/HYDROSTATIC OIL.....	2160-18	CYLINDER COMPLETE, LIFT.....	3263-2
COOLER, HYDRAULIC/HYDROSTATIC OIL.....	2160-20	CYLINDER COMPONENTS, THREE SHANK RIPPER.....	4265-2
COOLING PACKAGE.....	0510-2	CYLINDER HEAD, ENGINE.....	0409-4
COOLING PACKAGE, HYDRAULIC/HYDROSTATIC, FUEL COOLER.....	2160-20	CYLINDER LINER O-RINGS, ENGINE.....	0403-2
CORE, HEAT EXCHANGERS (HEATER/AIR CONDITIONER).....	1830-8	CYLINDER LINER, ENGINE.....	0403-2
COUNTERWEIGHT, REAR.....	1749-2	CYLINDER PISTON, THREE SHANK RIPPER (COMPLETE).....	4265-2
COUPLING, ENGINE CENTAFLEX.....	0752-2	CYLINDER ROD, THREE SHANK RIPPER.....	4265-2
COUPLING, MAIN HYDRAULIC PUMP.....	2160-12	CYLINDER SLEEVE O-RINGS (ENGINE SEAL KIT).....	0452-2
COVER LATCH, ENGINE.....	1910-2	CYLINDER, BLADE LIFT.....	3265-2
COVER LATCH, ENGINE.....	1910-8	CYLINDER, BLADE TILT.....	3265-6
COVER LATCH, ENGINE.....	1910-10	CYLINDER, HYDROSTATIC OIL COOLER DOOR.....	2160-22
COVER, BLADE TILT CYLINDER.....	3265-6	CYLINDER, HYDROSTATIC OIL COOLER DOOR.....	2160-23A
COVER, CARRIER ROLLER.....	0133-2	CYLINDER, LOWER HYDRAULIC, THREE SHANK RIPPER (COMPLETE).....	4201-4
COVER, DOOR LATCH.....	1810-14	CYLINDER, OPERATOR STATION HYDRAULIC TILT.....	1812-12
COVER, ENGINE FLYWHEEL HOUSING.....	0433-4	CYLINDER, THREE SHANK RIPPER (COMPLETE).....	4265-2
COVER, ENGINE FRONT.....	0402-6	CYLINDERS, FUEL TANK DOORS.....	0564-2
COVER, FUEL TANK ACCESS.....	0564-4		
COVER, GRILLE.....	1921-2		
COVER, HYDRAULIC OIL RESERVOIR FILTER.....	2164-2		
COVER, HYDROSTATIC MOTOR.....	0360-20		
COVER, LOAD CENTER.....	1674-14		
COVER, MAIN HYDRAULIC CONTROL VALVE.....	2160-26		
COVER, TRACK IDLER.....	0134-2		
COVER, WATER PUMP.....	0417-2		
COVER, WIPER MOTOR.....	1810-12		
COVERS, CAB PLATFORM.....	1812-6		
COVERS, ENGINE COMPARTMENT.....	1910-2		
COVERS, ENGINE COMPARTMENT.....	1910-8		
COVERS, ENGINE COMPARTMENT.....	1910-10		
COVERS, MAIN FRAME BOTTOM.....	1746-2		
COVERS, MAIN FRAME REAR.....	1910-6		
COWL SUPPORT.....	1910-4		
COWL, FAN, RADIATOR.....	0510-6		

D

DAMPENER, CRANKSHAFT.....	0429-2
DECAL, ACCUMULATOR.....	1322-2
DECAL, AIR FILTER.....	1322-2
DECAL, BYPASS START.....	1322-2
DECAL, CAB TIPPING PROCEDURE.....	1322-2
DECAL, CHAIN TENSION CAUTION.....	1322-2
DECAL, CIRCUIT BREAKER.....	1322-2
DECAL, DECELERATOR.....	1322-2
DECAL, DEERE FRONT GRILLE.....	1322-2
DECAL, DIESEL FUEL ONLY.....	1322-2
DECAL, ENGINE SPEED.....	1322-2
DECAL, ENGINE START AND STOP PROCEDURE.....	1322-2
DECAL, FORWARD, NEUTRAL, REVERSE.....	1322-2
DECAL, FUSE BLOCK.....	1322-2

ALPHABETICAL INDEX - CONTINUED

	PAGE		PAGE
DECAL, GROUND DISCONNECT SWITCH	1322-2	DOUBLE-FLANGE TRACK ROLLER	0133-4
DECAL, HYDRAULIC DOZER CONTROL FORWARD, NEUTRAL, REVERSE	1322-2	DRAIN HOSE, ENVIRONMENTAL	2005-2
DECAL, HYDRAULIC FLUID	1322-2	DRAIN PLUG AUXILIARY SECTION MANIFOLD	4263-2
DECAL, HYDRAULIC JOYSTICK CONTROL	1322-2	DRAIN PLUG, FUEL TANK	0564-4
DECAL, JOYSTICK CONTROL	1322-2	DRAIN PLUG, HYDRAULIC OIL RESERVOIR	2164-2
DECAL, LEAPING DEERE	1322-2	DRAIN PLUG, PRIMARY FUEL FILTER	0420-2
DECAL, LIFT HOOK	1322-2	DRAIN PLUGS, CYLINDER BLOCK	0404-4
DECAL, LIFT HOOK	1749-2	DRAIN VALVE, ENGINE OIL PAN	0407-2
DECAL, PARK BRAKE SWITCH	1322-2	DRAIN, EVAPORATOR CONDENSATION (HEATER/AIR CONDITIONER)	1830-10
DECAL, PARK LOCK, CAUTION OPERATING	1322-2	DRAWBAR	1512-2
DECAL, PERIODIC MAINTENANCE	1322-2	DRAWBAR PIN	1512-2
DECAL, RADIATOR CAP	1322-2	DRAWBAR PIN RETAINER	1512-2
DECAL, REAR DEERE	1322-2	DRIVE COUPLING, MAIN HYDRAULIC PUMP	2160-12
DECAL, ROPS CERTIFICATION	1322-2	DRIVE MOTOR COMPLETE, HYDROSTATIC	0360-16
DECAL, SEAT BELT	1322-2	DRIVE SHAFT (CONTINUED), UNIVERSAL FINAL	0201-4
DECAL, STEERING	1322-2	DRIVE SHAFT BEARING, FAN DRIVE HYDRAULIC PUMP	2160-4
DECAL, TILT LOCK	1322-2	DRIVE SHAFT BEARING, MAIN HYDRAULIC PUMP	2160-10
DECAL, TRACK ADJUSTER	1322-2	DRIVE SHAFT, FAN DRIVE HYDRAULIC PUMP	2160-4
DECAL, WINDSHIELD WASHER	1322-2	DRIVE SHAFT, HYDROSTATIC MOTOR	0360-20
DECAL, 950J	1322-2	DRIVE SHAFT, MAIN HYDRAULIC PUMP	2160-10
DECALS (FRENCH)	1322-6	DRIVE SHAFT, UNIVERSAL FINAL	0201-2
DECALS (SPANISH)	1322-4	DRIVE SPLITTER BOX PARTS, ENGINE	0841-4
DECALS AND LABELS	1322-2	DRIVE SPROCKET, TRACK CHAIN	0132-6
DECELERATOR AND COMPONENT PARTS	1011-2	DRIVES (CONTINUED), FINAL	0201-4
DECELERATOR LABEL	1322-2	DRIVES, FINAL	0201-2
DEERE FRONT GRILLE LABEL	1322-2	DRIVESHAF, HYDROSTATIC PUMP	0360-4
DIAGNOSTIC HOSES AND FITTINGS	0363-8	DRYER, A/C CONDENSER	1833-6
DIESEL FUEL ONLY LABEL	1322-2	DUO CONE, BREATHING LINE	2005-2
DIPSTICK, ENGINE OIL	0407-12	DUO CONE, REFILLING HOSE	2005-2
DIPSTICK, PIVOT SHAFT OIL	0135-2		
DIPSTICK, SPLITTER BOX	0841-4		
DISPLACEMENT CONTROL VALVE, HYDROSTATIC PUMP	0360-10	E	
DISPLACEMENT PISTON, MAIN HYDRAULIC PUMP	2160-10	ECU (ENGINE CONTROL UNIT)	0475-2
DISTRIBUTOR BLOCK, HYDROSTATIC CHARGE OIL FILTER	0360-24	ECU COOLER LINES	0563-8
DOME LIGHT	1674-8	ECU FUEL COOLING LINE	0563-6
DOOR CYLINDERS, FUEL TANK DOORS	0564-2	ECU/TCU LABEL	1322-2
DOOR HANDLE, CAB	1810-6	ELBOW FITTING, WINDSHIELD WIPER	1814-10
DOOR HOLD OPEN HYDRAULIC/HYDROSTATIC OIL COOLER HOUSING	2160-22	ELECTRICAL CONNECTORS	1674-30
DOOR HOLD OPEN HYDRAULIC/HYDROSTATIC OIL COOLER HOUSING	2160-23A	ELECTRICAL CONNECTORS (PAGE 2)	1674-32
DOOR HOLD OPEN LATCHES	1810-8	ELECTRICAL CONNECTORS (PAGE 3)	1674-34
DOOR HOLD OPEN PIN	1810-8	ELECTRICAL CONNECTORS (PAGE 4)	1674-36
DOOR KEY	2005-2	ELECTRICAL CONNECTORS (PAGE 5)	1674-38
DOOR LATCH COVER	1810-14	ELECTRICAL CONNECTORS (PAGE 6)	1674-40
DOOR LATCH, HYDROSTATIC OIL COOLER HOUSING	2160-22	ELECTRICAL CONNECTORS (PAGE 7)	1674-42
DOOR LATCH, HYDROSTATIC OIL COOLER HOUSING	2160-23A	ELECTRICAL CONNECTORS (PAGE 8)	1674-44
DOOR LOCK AND IGNITION SWITCH KEY, CAB	1810-6	ELECTRICAL CONNECTORS (PAGE 9)	1674-46
DOOR WIPER MOTOR COVER	1810-14	ELECTRICAL DISCONNECT SWITCH	1671-2
DOORS COMPLETE, ENGINE COMPARTMENT FRONT	1910-8	ELECTRICAL SOCKET, TWELVE VOLT	1674-4
DOORS COMPLETE, ENGINE COMPARTMENT FRONT	1910-10	ELEMENT, ENGINE OIL FILTER	0407-10
DOORS COMPONENT PARTS, ENGINE COMPARTMENT FRONT	1910-2	ELEMENTS, CASE DRAIN FILTERS	0360-14
DOORS COMPONENT PARTS, ENGINE COMPARTMENT FRONT	1910-8	ELEMENTS, FINAL FUEL FILTER	0420-4
DOORS COMPONENT PARTS, ENGINE COMPARTMENT FRONT	1910-10	ELEMENTS, PRIMARY FUEL FILTER	0420-2
DOORS, BOTTOM, ENGINE COMPARTMENT	1910-2	EMERGENCY STOP BUTTON	1674-4
DOORS, CAB	1810-4	END BIT, LGP STRAIGHT BLADE	3201-8
DOORS, FUEL TANK	0564-2	END BIT, SEMI-U BLADE	3201-6
		ENDPLATE, HYDROSTATIC PUMP	0360-8

ALPHABETICAL INDEX - CONTINUED

	PAGE		PAGE
ENGINE	0404-2	ENGINE HEAD GASKET KIT, COMPLETE	0452-8
ENGINE AIR INTAKE HEATER RELAY	1671-2	ENGINE HEAD GASKET KIT, SINGLE	0452-8
ENGINE AIR INTAKE HOSES	0520-6	ENGINE LIFT BRACKET, FRONT	0402-6
ENGINE AIR INTAKE MANIFOLD AND GASKETS	0414-2	ENGINE LIFT BRACKET, REAR	0404-4
ENGINE AIR INTAKE PIPES	0520-6	ENGINE LIFT BRACKET, REAR	0433-4
ENGINE CENTAFLEX COUPLING	0752-2	ENGINE MOUNTING BRACKETS	0540-2
ENGINE COMPARTMENT COVERS	1910-2	ENGINE MOUNTING BRACKETS ISOLATORS	0540-2
ENGINE COMPARTMENT COVERS	1910-8	ENGINE OIL COOLER	0419-4
ENGINE COMPARTMENT COVERS	1910-10	ENGINE OIL COOLER GASKETS (ENGINE SEAL KIT)	0452-6
ENGINE COMPARTMENT DOORS COMPLETE	1910-2	ENGINE OIL DIPSTICK AND TUBE	0407-12
ENGINE COMPARTMENT DOORS COMPONENT PARTS	1910-2	ENGINE OIL DIPSTICK TUBE - BOTTOM	0407-2
ENGINE COMPARTMENT FRONT DOORS COMPLETE	1910-8	ENGINE OIL FILL TUBE	0407-8
ENGINE COMPARTMENT FRONT DOORS COMPLETE	1910-10	ENGINE OIL FILTER ADAPTER	0407-10
ENGINE COMPARTMENT FRONT DOORS COMPONENT PARTS	1910-8	ENGINE OIL FILTER ELEMENT	0407-10
ENGINE COMPARTMENT FRONT DOORS COMPONENT PARTS	1910-10	ENGINE OIL FILTERS	0407-10
ENGINE COMPARTMENT HOOD AND REAR HOOD SUPPORT	1910-4	ENGINE OIL PAN	0407-2
ENGINE COMPARTMENT SIDE SHIELD HINGE	1910-2	ENGINE OIL PAN DRAIN VALVE	0407-2
ENGINE COMPARTMENT SIDE SHIELD HINGE	1910-8	ENGINE OIL PAN GASKETS (ENGINE SEAL KIT)	0452-2
ENGINE COMPARTMENT SIDE SHIELD HINGE	1910-10	ENGINE OIL PAN REPAIR KIT	0407-2
ENGINE COMPARTMENT SIDE SHIELDS	1910-2	ENGINE OIL PRESSURE REGULATING VALVE	0402-6
ENGINE COMPARTMENT SIDE SHIELDS	1910-8	ENGINE OIL PUMP	0407-6
ENGINE COMPARTMENT SIDE SHIELDS	1910-10	ENGINE OIL PUMP O-RINGS (ENGINE SEAL KIT)	0452-2
ENGINE CONTROL SENSORS	0578-2	ENGINE OIL PUMP, AUXILIARY	0407-14
ENGINE CONTROL UNIT	0475-2	ENGINE OIL PUMP, AUXILIARY	0407-16
ENGINE CONTROL UNIT COOLER LINES	0563-8	ENGINE OVERHAUL COMPLETE SEAL KIT (PAGE 1)	0452-2
ENGINE CONTROL UNIT MOUNTING BRACKETS	0475-2	ENGINE OVERHAUL COMPLETE SEAL KIT (PAGE 2)	0452-4
ENGINE COOLANT TEMPERATURE GAUGE	1674-6	ENGINE OVERHAUL COMPLETE SEAL KIT (PAGE 3)	0452-6
ENGINE COOLANT VENT LINE	0563-10	ENGINE OVERSPEED RETARDER SOLENOID VALVE	2160-8
ENGINE COVER LATCH	1910-2	ENGINE PISTON	0403-2
ENGINE COVER LATCH	1910-8	ENGINE PISTON COOLING FITTING	0403-2
ENGINE COVER LATCH	1910-10	ENGINE PISTON COOLING FITTING ORIFICE	0403-2
ENGINE CRANKCASE BREATHER	0407-4	ENGINE PISTON RINGS	0403-2
ENGINE CRANKCASE BREATHER GASKET (ENGINE SEAL KIT)	0452-4	ENGINE PISTON WRIST PIN	0403-2
ENGINE CRANKCASE BREATHER LINES	0407-4	ENGINE SEAL KIT (PAGE 1)	0452-2
ENGINE CYLINDER BLOCK	0404-4	ENGINE SEAL KIT (PAGE 2)	0452-4
ENGINE CYLINDER BLOCK PLUGS	0404-4	ENGINE SEAL KIT (PAGE 3)	0452-6
ENGINE CYLINDER BLOCK SEALING RINGS	0404-4	ENGINE SENSORS	0578-2
ENGINE CYLINDER HEAD	0409-4	ENGINE SPEED LABEL	1322-2
ENGINE CYLINDER HEAD EXHAUST VALVE	0409-4	ENGINE SPEED POTENTIOMETER	1674-4
ENGINE CYLINDER HEAD GASKET	0409-4	ENGINE START AND STOP PROCEDURE LABEL	1322-2
ENGINE CYLINDER HEAD INTAKE VALVE	0409-4	ENGINE THERMOSTAT	0418-2
ENGINE CYLINDER HEAD VALVE SPRINGS	0409-4	ENGINE THERMOSTAT GASKET	0418-2
ENGINE CYLINDER LINER	0403-2	ENGINE THERMOSTAT HOUSING	0418-2
ENGINE CYLINDER LINER KIT	0403-2	ENGINE THERMOSTAT HOUSING GASKETS (ENGINE SEAL KIT)	0452-4
ENGINE CYLINDER LINER O-RINGS	0403-2	ENGINE WATER PUMP	0417-2
ENGINE DRIVE SPLITTER BOX PARTS	0841-4	ENGINE WATER PUMP O-RINGS (ENGINE SEAL KIT)	0452-4
ENGINE FLYWHEEL	0433-2	ENGINE WIRING HARNESS	1674-2
ENGINE FLYWHEEL HOUSING BREATHER	0433-4	ENVIRONMENTAL DRAIN HOSE	2005-2
ENGINE FLYWHEEL HOUSING COVER	0433-4	EVAPORATOR CONDENSATION DRAIN (HEATER/AIR CONDITIONER)	1830-10
ENGINE FLYWHEEL HOUSING GASKETS (ENGINE SEAL)	0452-4	EVAPORATOR, HEAT EXCHANGERS (HEATER/AIR CONDITIONER)	1830-8
ENGINE FLYWHEEL RING GEAR	0433-2	EXHAUST MANIFOLD	0410-2
ENGINE FRONT COVER	0402-6	EXHAUST MANIFOLD GASKETS	0410-2
ENGINE FRONT COVER ACCESS COVER	0402-10	EXHAUST PIPE	1910-4
ENGINE FRONT COVER GASKET	0402-6	EXHAUST PIPE GASKET, MUFFLER	0530-2
ENGINE FUEL PREHEATER	0560-2	EXHAUST PIPE HEAT SHIELD	0530-2
ENGINE HEAD GASKET	0452-8	EXHAUST PIPE, MUFFLER	0530-2
ENGINE HEAD GASKET KIT	0452-8	EXHAUST VALVE ENGINE CYLINDER HEAD	0409-4
ENGINE HEAD GASKET KIT (ENGINE SEAL KIT), COMPLETE	0452-6		

ALPHABETICAL INDEX - CONTINUED

	PAGE		PAGE
EXHAUST VALVE, ENGINE CYLINDER HEAD	0409-4	FINAL DRIVES BRAKE	0201-2
EXPANSION VALVE, AIR CONDITIONING	1830-8	FINAL DRIVES BRAKE (CONTINUED).....	0201-4
EXTENSION, SEAT BACKREST	1821-2	FINAL FUEL FILTER ELEMENTS	0420-4
EXTERNAL FUEL COOLING SYSTEM	0563-6	FINAL FUEL FILTER HEADER.....	0420-4
EYEBOLT, CAB REMOVAL.....	2005-2	FINAL FUEL FILTER SEALS (ENGINE SEAL KIT).....	0452-6
F			
FAN COWL, RADIATOR	0510-6	FITTING, ENGINE PISTON COOLING.....	0403-2
FAN DRIVE HYDRAULIC PUMP ADAPTER PLATE	2160-6	FITTINGS AND FLANGES, FAN DRIVE HYDRAULIC PUMP.....	2160-6
FAN DRIVE HYDRAULIC PUMP CONTROL PISTON AND CYLINDER.....	2160-4	FITTINGS, AIR CONDITIONER.....	1830-6
FAN DRIVE HYDRAULIC PUMP DISPLACEMENT CONTROL.....	2160-2	FITTINGS, BLADE TILT HYDRAULIC HOSES.....	3263-4
FAN DRIVE HYDRAULIC PUMP DRIVE SHAFT	2160-4	FITTINGS, CASE DRAIN FILTER MANIFOLD	0360-14
FAN DRIVE HYDRAULIC PUMP DRIVE SHAFT SWASH PLATE AND PISTONS	2160-4	FITTINGS, CHARGE OIL PRESSURE REGULATING MANIFOLD.....	0360-26
FAN DRIVE HYDRAULIC PUMP DRIVE SHAFT OIL SEAL	2160-4	FITTINGS, HYDRAULIC OIL RESERVOIR.....	2164-4
FAN DRIVE HYDRAULIC PUMP MOUNTING.....	2160-6	FITTINGS, HYDROSTATIC CHARGE PUMP	0360-12
FAN DRIVE HYDRAULIC PUMP PISTONS	2160-4	FITTINGS, HYDROSTATIC DRIVE HYDRAULIC HOSES AND PARK BRAKE.....	0363-4
FAN DRIVE HYDRAULIC PUMP SWASH CONTROL PISTONS.....	2160-4	FITTINGS, HYDROSTATIC DRIVE MOTOR AND FINAL DRIVE	0360-16
FAN DRIVE MOTOR, HYDRAULIC	0510-8	FITTINGS, HYDROSTATIC MOTOR HYDRAULIC HOSES.....	0363-2
FAN DRIVE MOTOR, HYDRAULIC OIL COOLER	2160-20	FITTINGS, HYDROSTATIC OIL COOLER	2160-16
FAN DRIVE PUMP.....	2160-2	FITTINGS, HYDROSTATIC OIL COOLER	2160-18
FAN DRIVE PUMP REGULATOR	2160-2	FITTINGS, HYDROSTATIC SOLENOID MANIFOLD	0360-22
FAN DRIVE SYSTEM PRESSURE TEST PORT AND HOSE	0363-8	FITTINGS, HYDROSTATIC TEST PORT	0363-8
FAN GUARD, RADIATOR.....	0510-6	FITTINGS, MAIN HYDRAULIC PUMP	2160-12
FAN, A/C CONDENSER	1833-6	FITTINGS, RADIATOR HOSES	0510-4
FAN, HYDRAULIC/HYDROSTATIC OIL COOLER.....	2160-20	FLANGE FITTINGS, BLADE LIFT CYLINDER.....	3263-2
FAN, RADIATOR	0510-6	FLANGE, HYDROSTATIC DRIVE HYDRAULIC HOSES AND PARK BRAKE.....	0363-4
FILL TUBE, ENGINE OIL.....	0407-8	FLANGE, HYDROSTATIC MOTOR HYDRAULIC HOSES.....	0363-2
FILTER COVER, CAB RECIRCULATION	1810-18	FLANGE, MOUNTING, MAIN HYDRAULIC PUMP	2160-12
FILTER ELEMENT, HYDRAULIC OIL RESERVOIR	2164-2	FLANGED AXLE SHAFT SEAL	0201-2
FILTER HOUSING, HYDROSTATIC OIL.....	0360-24	FLANGED AXLE SHAFT SEAL (CONTINUED)	0201-4
FILTER RESTRICTION INDICATOR SWITCH, HYDRAULIC OIL	2164-4	FLANGES AND FITTINGS, FAN DRIVE HYDRAULIC PUMP.....	2160-6
FILTER, AIR CLEANER	0520-2	FLANGES, HYDROSTATIC OIL COOLER.....	2160-16
FILTER, CAB FRESH AIR RECIRCULATING.....	1830-4	FLANGES, HYDROSTATIC OIL COOLER	2160-18
FILTER, CASE DRAIN	0360-14	FLOOR MAT.....	1812-8
FILTER, FINAL FUEL.....	0420-4	FLYWHEEL RING GEAR, ENGINE	0433-2
FILTER, HYDRAULIC AND HYDROSTATIC CASE DRAIN	2164-2	FLYWHEEL, ENGINE.....	0433-2
FILTER, HYDRAULIC OIL (IN HYDRAULIC RESERVOIR)	2164-2	FLYWHEEL, SECONDARY DRIVE (CENTAFLEX HUB).....	0752-2
FILTER, HYDRAULIC/HYDROSTATIC CASE DRAIN.....	2164-4	FNR CONTROLLER	0375-2
FILTER, HYDROSTATIC OIL	0360-24	FOOT PADS, FRONT.....	1810-14
FILTER, PRIMARY FUEL.....	0420-2	FOOTREST, CAB PLATFORM.....	1812-4
FILTER, SECONDARY FUEL	0420-4	FORWARD PROPORTIONAL SOLENOID VALVE	0360-10
FILTERS, CASE DRAIN, HYDRAULIC OIL RESERVOIR	2164-4	FORWARD, NEUTRAL REVERSE LABEL	1322-2
FILTERS, ENGINE OIL	0407-10	FORWARD, NEUTRAL, REVERSE-HYDRAULIC DOZER CONTROL LABEL	1322-2
FINAL DRIVE BRAKE PISTON	0201-2	FRAME COVERS, REAR.....	1910-6
FINAL DRIVE BRAKE PISTON (CONTINUED).....	0201-4	FRAME WEAR PLATE, TRACK.....	0131-2
FINAL DRIVE FITTINGS	0360-16	FRAME, AIR SUSPENSION SEAT	1821-4
FINAL DRIVE HYDRAULIC HOSES.....	0201-12	FRAME, CAB SLIDING REAR WINDOW	1814-6
FINAL DRIVE INNER HOUSING	0201-2	FRAME, CAB SLIDING SIDE WINDOW.....	1814-4
FINAL DRIVE INNER HOUSING (CONTINUED)	0201-4	FRAME, THREE SHANK RIPPER.....	4201-4
FINAL DRIVE INPUT GEAR.....	0201-2	FRAME, TRACK.....	0131-2
FINAL DRIVE INPUT GEAR (CONTINUED)	0201-4	FRENCH LABELS AND DECALS.....	1322-6
FINAL DRIVE OUTER HOUSING	0201-2	FRESH AIR FILTER	1830-4
FINAL DRIVE OUTER HOUSING (CONTINUED).....	0201-4	FRONT BRACKET, CAB OVERHEAD CONSOLE	1674-10
FINAL DRIVES	0201-2	FRONT GRILLE LABEL, DEERE.....	1322-2
FINAL DRIVES (CONTINUED).....	0201-4	FRONT HYDROSTATIC CHARGE PUMP	0360-12
		FUEL COOLER.....	2160-20
		FUEL COOLING LINES	0563-6

ALPHABETICAL INDEX - CONTINUED

	PAGE		PAGE
FUEL GAUGE SENDER	0564-4	GEARS, AUXILIARY ENGINE OIL PUMP	0407-16
FUEL GAUGE, INSTRUMENT PANEL	1674-6	GEARS, CAMSHAFT	0402-2
FUEL HOSES	0563-2	GLASS, SIDE SLIDING CAB WINDOW	1814-4
FUEL INJECTION NOZZLE	0413-2	GRAB HANDLES	1810-8
FUEL INJECTION NOZZLE PRESSURE ADAPTER	0413-2	GRILLE	1921-2
FUEL INJECTION NOZZLE SEAL KIT	0413-2	GRILLE MOUNTED LIGHTS	1673-6
FUEL INJECTION NOZZLE, SEAL KIT AND PRESSURE ADAPTER	0413-2	GRILLE, A/C CONDENSER	1810-10
FUEL INJECTION PUMP AND FUEL LINES	0413-4	GROUND CABLE, BATTERY	1671-2
FUEL INJECTION PUMP O-RINGS (ENGINE SEAL KIT)	0452-6	GROUND CABLE, CAB	1671-2
FUEL LEVEL SENSOR	0564-4	GROUND CABLE, STARTER	0422-2
FUEL LINES, ECU COOLING	0563-8	GROUND DISCONNECT SWITCH LABEL	1322-2
FUEL LINES, FUEL INJECTION PUMP	0413-4	GROUND STRAP, CAB	0564-4
FUEL LINES, PRIMARY & FINAL FUEL FILTER	0420-6	GROUND STRAP, TRANSMISSION CONTROL UNIT	0375-2
FUEL MANIFOLD	0420-6	GUARD, CAB SLIDING REAR WINDOW	1814-6
FUEL PREHEATER, ENGINE	0560-2	GUARD, GRILLE MOUNTED LIGHTS	1673-6
FUEL PUMP AND AUXILIARY DRIVE	0421-2	GUARD, HYDRAULIC OIL COOLER FAN	2160-20
FUEL RETURN LINES	0563-6	GUARDS, MAIN FRAME BOTTOM	1746-2
FUEL STRAINER, FUEL TANK	0564-4	GUARDS, ROCK	0138-2
FUEL TANK	0564-2	GUARDS, SPROCKET	0138-4
FUEL TANK ACCESS COVER	0564-4	GUARDS, TRACK	0138-2
FUEL TANK CAP	0564-4	GUIDE, CAB SLIDING REAR WINDOW	1814-6
FUEL TANK CAP KEY	0564-4	GUIDE, FAN DRIVE HYDRAULIC PUMP PISTON	2160-4
FUEL TANK DRAIN PLUG	0564-4	GUIDE, TRACK IDLER WHEEL	0134-2
FUEL TANK FUEL STRAINER	0564-4	GUIDES, CENTER TRACK (LGP)	0131-4
FUEL TANK PLUMBING	0563-2	GUIDES, CENTER TRACK (STANDARD MACHINE)	0131-4
FUEL TANK SUPPORT	0564-4	GUIDES, TRACK	0138-4
FUEL TANK TO WATER SEPARATOR FUEL HOSES	0563-2		
FUEL TEMPERATURE SENSOR	0578-2	H	
FUSE BLOCK LABEL	1322-2	HAND HOLDS, LGP	1812-2
FUSE HOLDER, CAB OVERHEAD CONSOLE	1674-10	HAND PUMP, OPERATOR STATION HYDRAULIC TILT	1812-10
FUSE, AIR SUSPENSION SEAT	1821-2	HANDLE, AUXILIARY PILOT CONTROLLER, REAR	4215-2
FUSES, CAB OVERHEAD CONSOLE	1674-10	HANDLE, CAB SLIDING REAR WINDOW	1814-6
FUSES, LOAD CENTER CIRCUIT BOARD	1674-12	HANDLE, PILOT CONTROLLER	3215-2
		HANDLE, RIPPER CONTROL LEVER	4215-2
G		HANDLE, SIDE SLIDING CAB WINDOW	1814-4
GASKET KIT (PAGE 1), COMPLETE ENGINE REPLACEMENT	0452-2	HANDLES, CAB DOOR	1810-6
GASKET KIT (PAGE 2), COMPLETE ENGINE REPLACEMENT	0452-4	HANDLES, GRAB OR MOUNTING	1810-8
GASKET KIT (PAGE 3), COMPLETE ENGINE REPLACEMENT	0452-6	HANDLES, LGP	1812-2
GASKET KIT, ENGINE HEAD	0452-8	HARDWARE, CAB ATTACHING	1810-2
GASKET KIT, ENGINE OIL PAN	0407-2	HARDWARE, MAIN FRAME BOTTOM GUARDS	1746-2
GASKET, ENGINE CYLINDER HEAD	0409-4	HARNESS CLAMPS, CAB WIRING	1674-20
GASKET, ENGINE FLYWHEEL HOUSING COVER	0433-4	HARNESS ELECTRICAL CONNECTORS	1674-30
GASKET, ENGINE FRONT COVER	0402-6	HARNESS ELECTRICAL CONNECTORS (PAGE 2)	1674-32
GASKET, ENGINE THERMOSTAT	0418-2	HARNESS ELECTRICAL CONNECTORS (PAGE 3)	1674-34
GASKET, EXHAUST MANIFOLD	0410-2	HARNESS ELECTRICAL CONNECTORS (PAGE 4)	1674-36
GASKET, HEAD, CYLINDER	0409-4	HARNESS ELECTRICAL CONNECTORS (PAGE 5)	1674-38
GASKET, MUFFLER EXHAUST PIPE	0530-2	HARNESS ELECTRICAL CONNECTORS (PAGE 6)	1674-40
GASKET, ROCKER ARM COVER	0409-2	HARNESS ELECTRICAL CONNECTORS (PAGE 7)	1674-42
GASKET, TURBOCHARGER	0416-2	HARNESS ELECTRICAL CONNECTORS (PAGE 8)	1674-44
GASKET, TURBOCHARGER AIR INTAKE	0414-6	HARNESS ELECTRICAL CONNECTORS (PAGE 9)	1674-46
GASKET, TURBOCHARGER MOUNTING	0416-2	HARNESS, AIR SUSPENSION WIRING	1821-2
GASKET, VALVE COVER	0409-2	HARNESS, BACK UP ALARM WIRING	2004-2
GASKETS, ENGINE AIR INTAKE MANIFOLD	0414-2	HARNESS, BRAKE PEDAL WIRE	1011-2
GAUGE, RADIATOR TANK	0510-4	HARNESS, CAB WIRING	1674-8
GAUGES, INSTRUMENT PANEL	1674-6	HARNESS, CAB WORK LIGHTS (OPTIONAL)	1673-4
GEAR, CRANKSHAFT	0401-2	HARNESS, ENGINE WIRING	1674-2
GEAR, ENGINE FLYWHEEL RING	0433-2		
GEAR, SPLITTER BOX	0841-4		
GEAR, SUN, FINAL DRIVE	0201-2		
GEARS, AUXILIARY ENGINE OIL PUMP	0407-14		

ALPHABETICAL INDEX - CONTINUED

	PAGE		PAGE
HARNESSES, INSTRUMENT PANEL WIRING.....	1674-6	HOSES, A/C CONDENSER.....	1833-6
HARNESSES, MAIN WIRING.....	1674-2	HOSES, AIR CLEANER.....	0520-2
HARNESSES, REVERSE TRAVEL ALARM WIRING.....	2004-2	HOSES, AIR CONDITIONER.....	1830-6
HEAD GASKET, CYLINDER.....	0409-4	HOSES, AIR CONDITIONER.....	1830-12
HEAD RESTRAINT, SEAT.....	1821-2	HOSES, BLADE TILT.....	3263-4
HEADER, FINAL FUEL FILTER.....	0420-4	HOSES, CAB HEATER.....	1830-4
HEADER, PRIMARY FUEL FILTER.....	0420-2	HOSES, CHARGE OIL FILTER TO HYDROSTATIC MOTOR.....	0363-4
HEADLIGHTS, SWITCH.....	1674-10	HOSES, CHARGE OIL PRESSURE REGULATING MANIFOLD.....	0363-6
HEADLINER, CAB.....	1810-12	HOSES, CHARGE PUMP.....	0363-6
HEADREST, SEAT.....	1821-2	HOSES, ENGINE AIR INTAKE.....	0520-6
HEAT EXCHANGERS, HOUSING (HEATER/AIR CONDITIONER).....	1830-8	HOSES, FINAL DRIVE.....	0201-12
HEAT SHIELD, EXHAUST PIPE.....	0530-2	HOSES, HYDRAULIC (RIPPER CONTROL LEVER TO CONTROL VALVE).....	4215-2
HEATER AND A/C VENT.....	1812-6	HOSES, HYDRAULIC FAN DRIVE.....	0510-10
HEATER BOX, CAB.....	1830-4	HOSES, HYDRAULIC, RIPPER CONTROLS.....	4215-2
HEATER CONTROL VALVE AND MOTOR (HEATER/AIR CONDITIONER).....	1830-10	HOSES, HYDROSTATIC AND HYDRAULIC TEST PORT.....	0363-8
HEATER/AC COMPONENT PARTS.....	1830-8	HOSES, HYDROSTATIC DRIVE HYDRAULIC.....	0363-4
HEATER, COMPLETE.....	1830-4	HOSES, HYDROSTATIC MOTOR TO CASE DRAIN FILTER MANIFOLD.....	0363-4
HIGH PRESSURE RELIEF VALVE, HYDROSTATIC PUMP.....	0360-4	HOSES, HYDROSTATIC PUMP TO HYDROSTATIC MOTOR.....	0363-2
HINGE, CAB STORAGE COMPARTMENT.....	1810-18	HOSES, LGP STRAIGHT BLADE.....	3201-8
HINGE, ENGINE COMPARTMENT SIDE SHIELD.....	1910-2	HOSES, OIL COOLER WITH REVERSIBLE FAN DRIVE.....	2163-10
HINGE, ENGINE COMPARTMENT SIDE SHIELD.....	1910-8	HOSES, OPERATOR STATION HYDRAULIC TILT.....	1812-10
HINGE, ENGINE COMPARTMENT SIDE SHIELD.....	1910-10	HOSES, RADIATOR.....	0510-4
HINGE, FRESH AIR FILTER COVER.....	1810-18	HOSES, RIPPER HYDRAULIC (CONTROL VALVE TO MANIFOLD).....	4263-2
HINGES, CAB DOOR.....	1810-4	HOSES, SEMI-U BLADE.....	3201-6
HITCH.....	1512-2	HOSES, WINDSHIELD WASHER.....	1814-10
HITCH PIN.....	1512-2	HOUR METER, INSTRUMENT PANEL.....	1674-6
HITCH PIN RETAINER.....	1512-2	HOUSING (CONTINUED), INNER FINAL DRIVE.....	0201-4
HOLD OPEN LATCHES, DOOR.....	1810-8	HOUSING (CONTINUED), OUTER FINAL DRIVE.....	0201-4
HOLD OPEN PIN, DOOR.....	1810-8	HOUSING, ENGINE CRANKCASE BREATHER.....	0407-4
HOLD OPEN, HYDRAULIC/HYDROSTATIC OIL COOLER HOUSING DOOR.....	2160-22	HOUSING, GRILLE MOUNTED LIGHTS.....	1673-6
HOLD OPEN, HYDRAULIC/HYDROSTATIC OIL COOLER HOUSING DOOR.....	2160-23A	HOUSING, HEAT EXCHANGERS (CAB HEATER/AIR CONDITIONER).....	1830-8
HOOD SUPPORT.....	1910-4	HOUSING, HYDRAULIC AND HYDROSTATIC OIL COOLER.....	2160-22
HOOD, ENGINE COMPARTMENT.....	1910-4	HOUSING, HYDRAULIC AND HYDROSTATIC OIL COOLER.....	2160-23A
HORN.....	2004-4	HOUSING, INNER FINAL DRIVE.....	0201-2
HORN BUTTON.....	2004-4	HOUSING, OUTER FINAL DRIVE.....	0201-2
HOSE CLAMPS (FUEL).....	0563-2	HUB, ENGINE CENTAFLEX.....	0752-2
HOSE CLAMPS (HYDROSTATIC).....	0363-10	HYDRAULIC ACCUMULATOR.....	0360-22
HOSE CLAMPS, HYDRAULIC.....	2163-12	HYDRAULIC AND HYDROSTATIC OIL COOLER HOUSING.....	2160-22
HOSE CLAMPS, HYDRAULIC (CONTINUED).....	0363-12	HYDRAULIC AND HYDROSTATIC OIL COOLER HOUSING.....	2160-23A
HOSE, CASE DRAIN, MAIN HYDRAULIC PUMP.....	2163-4	HYDRAULIC CASE DRAIN FILTERS.....	2164-4
HOSE, COOLER BYPASS VALVE TO CHARGE PUMP.....	0363-6	HYDRAULIC CONTROL LEVER, RIPPER.....	4215-2
HOSE, HYDRAULIC OIL SUCTION.....	2163-4	HYDRAULIC CONTROL VALVE (COMPLETE).....	2160-24
HOSE, HYDRAULIC RESERVOIR TO CHARGE PUMP.....	0363-6	HYDRAULIC CONTROL VALVE, AUXILIARY SECTION.....	4262-2
HOSE, HYDRAULIC, THREE SHANK RIPPER.....	4201-6	HYDRAULIC CONTROL VALVE, AUXILIARY SECTION.....	4263-2
HOSE, HYDROSTATIC PUMP TO CASE DRAIN MANIFOLD.....	0363-2	HYDRAULIC CONTROL VALVE, RIPPER.....	4262-2
HOSE, HYDROSTATIC PUMP TO CHARGE OIL FILTER.....	0363-2	HYDRAULIC CONTROL VALVE, RIPPER.....	4263-2
HOSE, HYDROSTATIC SOLENOID VALVE TO PILOT CONTROLLER.....	2163-6	HYDRAULIC CYLINDER, LOWER, THREE SHANK RIPPER (COMPLETE).....	4201-4
HOSE, HYDROSTATIC SOLENOID VALVE TO HYDRAULIC RESERVOIR.....	2163-4	HYDRAULIC CYLINDER, UPPER, THREE SHANK RIPPER (COMPLETE).....	4201-6
HOSE, MAIN HYDRAULIC CONTROL VALVE TO HYDRAULIC RESERVOIR.....	2163-4		
HOSE, MAIN HYDRAULIC CONTROL VALVE TO HYDROSTATIC SOLENOID VALVE.....	2163-6		
HOSE, MAIN HYDRAULIC PUMP TO MAIN HYDRAULIC CONTROL VALVE.....	2163-6		
HOSE, REFRIGERANT (HEATER/AIR CONDITIONER).....	1830-10		
HOSE, RETURN, MAIN HYDRAULIC CONTROL VALVE TO HYDRAULIC RESERVOIR.....	2163-4		

ALPHABETICAL INDEX - CONTINUED

PAGE	PAGE
HYDRAULIC DOZER CONTROL LABEL FORWARD, NEUTRAL, REVERSE 1322-2	HYDRAULIC RIPPER CONTROL LEVER 4215-2
HYDRAULIC FAN DRIVE HOSE ROUTING 0510-10	HYDRAULIC RIPPER CONTROL LEVER HOSES 4215-2
HYDRAULIC FAN DRIVE HOSES 0510-10	HYDRAULIC RIPPER JOYSTICK 4215-2
HYDRAULIC FAN DRIVE MOTOR (COMPLETE) 0510-6	HYDRAULIC SUCTION, RETURN, AND LOAD SENSE HOSES 2163-4
HYDRAULIC FAN DRIVE MOTOR COMPONENTS 0510-8	HYDRAULIC SYSTEM PRESSURE TEST PORT AND HOSE 0363-8
HYDRAULIC FAN DRIVE PUMP MOUNTING 2160-6	HYDRAULIC/HYDROSTATIC OIL COOLER HOUSING DOOR HOLD OPEN 2160-22
HYDRAULIC FILTER RESTRICTION INDICATOR LIGHT PRESSURE SWITCH 2164-4	HYDRAULIC/HYDROSTATIC OIL COOLER HOUSING DOOR HOLD OPEN 2160-23A
HYDRAULIC FLUID LABEL 1322-2	HYDROSTATIC CASE DRAIN FILTERS 2164-4
HYDRAULIC HOSE, THREE SHANK RIPPER 4201-6	HYDROSTATIC CHARGE PUMP SEAL KIT 0360-12
HYDRAULIC HOSES (RIPPER CONTROL LEVER TO CONTROL VALVE) 4215-2	HYDROSTATIC CHARGE PUMPS 0360-12
HYDRAULIC HOSES FOR OIL COOLER WITH REVERSIBLE FAN DRIVE 2163-10	HYDROSTATIC COOLER BYPASS VALVE 0360-14
HYDRAULIC HOSES, AUXILIARY PILOT CONTROLLER, REAR 4215-2	HYDROSTATIC DRIVE HYDRAULIC HOSES 0363-4
HYDRAULIC HOSES, BLADE LIFT CYLINDER 3263-2	HYDROSTATIC DRIVE MOTOR COMPLETE 0360-16
HYDRAULIC HOSES, BLADE TILT 3263-4	HYDROSTATIC DRIVE MOTOR COMPONENTS 0360-20
HYDRAULIC HOSES, FINAL DRIVE 0201-12	HYDROSTATIC DRIVE MOTOR FITTINGS 0360-16
HYDRAULIC HOSES, HYDROSTATIC DRIVE 0363-4	HYDROSTATIC DRIVE MOTOR PISTONS AND VALVES 0360-18
HYDRAULIC HOSES, LGP STRAIGHT BLADE 3201-8	HYDROSTATIC MOTOR CASE DRAIN FILTERS 0360-14
HYDRAULIC HOSES, RIPPER (CONTROL VALVE TO MANIFOLD) 4263-2	HYDROSTATIC MOTOR COVER 0360-20
HYDRAULIC HOSES, RIPPER CONTROLS 4215-2	HYDROSTATIC MOTOR CYLINDER BLOCK 0360-20
HYDRAULIC HOSES, SEMI-U BLADE 3201-6	HYDROSTATIC MOTOR DRIVE SHAFT 0360-20
HYDRAULIC JOYSTICK CONTROL LABEL 1322-2	HYDROSTATIC MOTOR HOSES 0363-2
HYDRAULIC LINES, FINAL DRIVE 0201-12	HYDROSTATIC MOTOR HOUSING 0360-20
HYDRAULIC MOTOR, HYDRAULIC OIL COOLER FAN DRIVE 2160-20	HYDROSTATIC MOTOR PISTONS AND VALVES 0360-18
HYDRAULIC OIL COOLER 2160-20	HYDROSTATIC MOTOR SPEED SENSOR 0201-4
HYDRAULIC OIL COOLER CHECK VALVE 2160-16	HYDROSTATIC MOTOR TEST PORT HOSES AND TEST PORT FITTINGS 0363-8
HYDRAULIC OIL COOLER CHECK VALVE 2160-18	HYDROSTATIC MOTOR TO CASE DRAIN FILTER MANIFOLD HOSES 0363-4
HYDRAULIC OIL COOLER FAN 2160-20	HYDROSTATIC OIL COOLER CHECK VALVE 2160-16
HYDRAULIC OIL COOLER FAN DRIVE MOTOR 2160-20	HYDROSTATIC OIL COOLER CHECK VALVE 2160-18
HYDRAULIC OIL COOLER FAN GUARD 2160-20	HYDROSTATIC OIL COOLER HOUSING 2160-22
HYDRAULIC OIL COOLER HOUSING SEALING STRIPS 2160-22	HYDROSTATIC OIL COOLER HOUSING 2160-23A
HYDRAULIC OIL COOLER HOUSING SEALING STRIPS 2160-23A	HYDROSTATIC OIL COOLER, FAN, AND FAN DRIVE MOTOR 2160-20
HYDRAULIC OIL COOLER PLUMBING FIXTURES AND MOUNTING 2160-16	HYDRAULIC OIL FILTER 0360-24
HYDRAULIC OIL COOLER PLUMBING FIXTURES AND MOUNTING 2160-18	HYDROSTATIC OIL TEMPERATURE SWITCH 0360-24
HYDRAULIC OIL COOLER, FAN, AND FAN DRIVE MOTOR 2160-20	HYDROSTATIC PUMP (COMPLETE) 0360-2
HYDRAULIC OIL FILTER 0360-24	HYDROSTATIC PUMP BEARING 0360-4
HYDRAULIC OIL RESERVOIR MOUNTING, FITTINGS AND CASE DRAIN FILTERS 2164-4	HYDROSTATIC PUMP CASE DRAIN FILTERS 0360-14
HYDRAULIC OIL RESERVOIR, RETURN FILTER, VALVES, AND FITTINGS 2164-2	HYDROSTATIC PUMP CHARGE PRESSURE RELIEF VALVE 0360-4
HYDRAULIC OIL RETURN FILTER 2164-2	HYDROSTATIC PUMP CONTROL PISTON/CYLINDER 0360-4
HYDRAULIC OIL SUCTION HOSE 2163-4	HYDROSTATIC PUMP DISPLACEMENT CONTROL SOLENOID VALVE 0360-10
HYDRAULIC PILOT CONTROL VALVE 3215-2	HYDROSTATIC PUMP DISPLACEMENT CONTROL VALVE 0360-10
HYDRAULIC PUMP CASE DRAIN HOSE 2163-4	HYDROSTATIC PUMP HIGH PRESSURE RELIEF VALVE 0360-4
HYDRAULIC PUMP COUPLING, MAIN 2160-12	HYDROSTATIC PUMP HOSES 0363-2
HYDRAULIC PUMP CYLINDER BLOCK, FAN DRIVE 2160-4	HYDROSTATIC PUMP MANIFOLD 0360-4
HYDRAULIC PUMP CYLINDER BLOCK, MAIN 2160-10	HYDROSTATIC PUMP PINION SHAFT 0360-4
HYDRAULIC PUMP DRIVE COUPLING, MAIN 2160-12	HYDROSTATIC PUMP PISTON 0360-4
HYDRAULIC PUMP DRIVE SHAFT, FAN DRIVE 2160-4	HYDROSTATIC PUMP SEAL KIT 0360-10
HYDRAULIC PUMP DRIVE SHAFT, MAIN 2160-10	HYDROSTATIC PUMP SERVO CONTROL 0360-8
HYDRAULIC PUMP FITTINGS, MAIN 2160-12	HYDROSTATIC PUMP SWASH PLATE 0360-4
HYDRAULIC PUMP PISTON GUIDE, FAN DRIVE 2160-4	HYDROSTATIC PUMP TO CASE DRAIN MANIFOLD HOSE 0363-2
HYDRAULIC PUMP PISTONS, FAN DRIVE 2160-4	HYDROSTATIC PUMP TO CHARGE OIL FILTER HOSE 0363-2
HYDRAULIC PUMP PISTONS, MAIN 2160-10	HYDROSTATIC PUMP TO HYDROSTATIC MOTOR HOSES 0363-2
HYDRAULIC PUMP, FAN DRIVE 2160-2	HYDROSTATIC SOLENOID MANIFOLD 0360-22
HYDRAULIC PUMP, MAIN 2160-8	

ALPHABETICAL INDEX - CONTINUED

	PAGE		PAGE
HYDROSTATIC SOLENOID VALVE TO MAIN HYDRAULIC PUMP HOSE	2163-4	LABEL, CHAIN TENSION CAUTION	1322-2
HYDROSTATIC SOLENOID VALVE TO PILOT CONTROLLER HOSE	2163-6	LABEL, CIRCUIT BREAKER	1322-2
HYDROSTATIC TRANSMISSION CONTROL UNIT	0375-2	LABEL, DECELERATOR	1322-2
I			
IDLER SHAFT, TRACK CHAIN	0134-2	LABEL, DEERE FRONT GRILLE	1322-2
IDLER WHEEL YOKE	0134-2	LABEL, DIESEL FUEL ONLY	1322-2
IDLER, TRACK CHAIN	0134-2	LABEL, ENGINE SPEED	1322-2
INDICATOR, HYDRAULIC OIL FILTER RESTRICTION	2164-4	LABEL, ENGINE START AND STOP PROCEDURE	1322-2
INJECTOR SLEEVE	0409-4	LABEL, FORWARD, NEUTRAL, REVERSE	1322-2
INPUT GEAR (CONTINUED), FINAL DRIVE	0201-4	LABEL, FUSE BLOCK	1322-2
INPUT GEAR, FINAL DRIVE	0201-2	LABEL, GROUND DISCONNECT SWITCH	1322-2
INSTRUMENT PANEL WIRING HARNESS AND GAUGES	1674-6	LABEL, HYDRAULIC DOZER CONTROL FORWARD, NEUTRAL, REVERSE	1322-2
INSULATION, CAB HEADLINER	1810-12	LABEL, HYDRAULIC FLUID	1322-2
INTAKE MANIFOLD, ENGINE AIR	0414-2	LABEL, HYDRAULIC JOYSTICK CONTROL	1322-2
INTAKE VALVE, ENGINE CYLINDER HEAD	0409-4	LABEL, JOYSTICK CONTROL	1322-2
INTERIOR CAB PANELS	1812-6	LABEL, LEAPING DEERE	1322-2
INTERIOR PANELING AND COVERS, FRONT	1810-14	LABEL, LIFT HOOK	1322-2
INTERIOR PANELING, CAB	1810-12	LABEL, LIFT HOOK	1749-2
ISOLATOR, CAB SLIDING REAR WINDOW	1814-6	LABEL, LIFT HOOK	4201-4
ISOLATOR, CAB STORAGE COMPARTMENT	1810-18	LABEL, PARK BRAKE SWITCH	1322-2
ISOLATOR, CAB WINDOW	1814-2	LABEL, PARK LOCK, CAUTION, OPERATING	1322-2
ISOLATOR, CROSSBAR	0135-4	LABEL, PERIODIC MAINTENANCE	1322-2
ISOLATOR, FRESH AIR FILTER COVER	1810-18	LABEL, RADIATOR CAP	1322-2
ISOLATOR, PLATFORM	1740-2	LABEL, REAR DEERE	1322-2
ISOLATORS, ENGINE MOUNTING BRACKETS	0540-2	LABEL, ROPS CERTIFICATION	1322-2
J			
JOYSTICK CONTROL LABEL	1322-2	LABEL, SEAT BELT	1322-2
JOYSTICK, FNR	0375-2	LABEL, STEERING	1322-2
JOYSTICK, PILOT CONTROL VALVE	3215-2	LABEL, TIE DOWN POINT	1322-2
JOYSTICK, RIPPER CONTROLS	4215-2	LABEL, TILT LOCK	1322-2
JOYSTICK, RIPPER CONTROLS, HYDRAULIC HOSES	4215-2	LABEL, TRACK ADJUSTER	1322-2
JUNCTION BLOCK, BLADE TILT	3263-4	LABEL, TWELVE VOLT	1674-4
JUNCTION BLOCKS, HYDROSTATIC PUMPS	0363-2	LABEL, WINDSHIELD WASHER	1322-2
K			
KEY, CAB DOOR LOCK AND IGNITION SWITCH	1810-6	LABEL, 950J	1322-2
KEY, CAB WINDOW WASHER FLUID RESERVOIR CAP	1814-10	LABELS (FRENCH)	1322-6
KEY, FUEL TANK CAP	0564-4	LABELS (SPANISH)	1322-4
KEY, PLATFORM STORAGE COMPARTMENT	1812-2	LABELS AND DECALS	1322-2
KICK PANELS, INTERIOR PANELING	1810-14	LAMPS, CAB WORK LIGHTS (OPTIONAL)	1673-4
KIT, ENGINE CYLINDER LINER	0403-2	LATCH, CAB SLIDING REAR WINDOW	1814-6
KIT, O-RING (FOR USE WITH 24-DEGREE CONE FITTINGS)	1369-4	LATCH, CAB STORAGE COMPARTMENT	1810-18
KITS, MAIN HYDRAULIC CONTROL VALVE SEAL	2160-26	LATCH, DOOR, HYDROSTATIC OIL COOLER HOUSING	2160-22
L			
LABEL, ACCUMULATOR	1322-2	LATCH, DOOR, HYDROSTATIC OIL COOLER HOUSING	2160-23A
LABEL, AIR FILTER	1322-2	LATCH, ENGINE COVER	1910-2
LABEL, BYPASS START	1322-2	LATCH, ENGINE COVER	1910-8
LABEL, CAB OVERHEAD CONSOLE	1674-10	LATCH, ENGINE COVER	1910-10
LABEL, CAB TIPPING PROCEDURE	1322-2	LATCH, FRESH AIR FILTER COVER	1810-18
		LATCHES, CAB DOOR	1810-6
		LATCHES, DOOR HOLD OPEN	1810-8
		LATCHES, FUEL TANK DOORS	0564-2
		LEAPING DEERE LABEL	1322-2
		LEFT PUSH BEAM	3243-2
		LEFT PUSH BEAM BEARING	3243-2
		LEFT PUSH BEAM BEARING CAP	3243-2
		LEFT PUSH BEAM PITCH JACK	3243-2
		LEFT TRAVEL FORWARD HIGH PRESSURE TEST PORT AND HOSE	0363-8
		LEFT TRAVEL REVERSE HIGH PRESSURE TEST PORT AND HOSE	0363-8
		LEG PADS, CAB PLATFORM	1812-6
		LEVER BOOT, RIPPER CONTROL	4215-2
		LEVER HANDLE, RIPPER CONTROL	4215-2
		LEVER, OPERATOR STATION HYDRAULIC TILT	1812-10
		LEVER, RIPPER HYDRAULIC CONTROL	4215-2
		LGP STRAIGHT BLADE	3201-8
		LGP TRUNNION BRACKET	3243-2
		LGP TRUNNION MOUNT	3243-2

000I-18

ALPHABETICAL INDEX - CONTINUED

	PAGE		PAGE
LIFT CYLINDER COMPLETE.....	3263-2	MAIN HYDRAULIC PUMP DRIVE COUPLER AND	
LIFT CYLINDER COMPLETE, BLADE.....	3263-2	MOUNTING FLANGE.....	2160-12
LIFT CYLINDER, BLADE.....	3265-2	MAIN HYDRAULIC PUMP DRIVE COUPLING.....	2160-12
LIFT HOOK LABEL.....	1322-2	MAIN HYDRAULIC PUMP DRIVE SHAFT.....	2160-10
LIFT HOOK LABEL.....	1749-2	MAIN HYDRAULIC PUMP DRIVE SHAFT OIL	
LIGHT BULB, GRILLE MOUNTED LIGHTS.....	1673-6	SEAL.....	2160-10
LIGHT BULB, STANDARD CAB.....	1673-2	MAIN HYDRAULIC PUMP FITTINGS.....	2160-12
LIGHT, DOME.....	1674-8	MAIN HYDRAULIC PUMP MOUNTING FLANGE.....	2160-12
LIGHT, INSTRUMENT PANEL GAUGES.....	1674-6	MAIN HYDRAULIC PUMP PISTONS.....	2160-10
LIGHTS, CAB WORK LIGHTS (OPTIONAL).....	1673-4	MAIN HYDRAULIC PUMP TO MAIN HYDRAULIC	
LIGHTS, GRILLE MOUNTED.....	1673-6	CONTROL VALVE HOSE.....	2163-6
LIGHTS, STANDARD CAB.....	1673-2	MAIN HYDRAULIC SHUTOFF VALVE.....	2164-2
LIGHTS, SWITCH.....	1674-10	MAIN WIRING HARNESS.....	1674-2
LINE, ENGINE COOLANT VENT.....	0563-10	MAIN WIRING HARNESS CLAMPS.....	1674-16
LINER O-RINGS, ENGINE CYLINDER.....	0403-2	MAIN WIRING HARNESS CLAMPS.....	1674-18
LINER, ENGINE CYLINDER.....	0403-2	MAINFRAME TO UNDERCARRIAGE BEARING.....	0135-2
LINES, FUEL, ECU COOLING.....	0563-8	MANIFOLD BLOCK, RIPPER.....	4263-2
LINES, HYDRAULIC FAN DRIVE.....	0510-10	MANIFOLD, AUXILIARY SECTION HYDRAULIC	
LINES, OPERATOR STATION HYDRAULIC TILT.....	1812-10	OIL.....	4263-2
LINES, REVERSIBLE HYDRAULIC FAN DRIVE.....	2163-10	MANIFOLD, CASE DRAIN.....	0360-14
LINK, TRACK CHAIN.....	0132-2	MANIFOLD, CHARGE OIL PRESSURE.....	0360-26
LINK, TRACK CHAIN		MANIFOLD, ENGINE AIR INTAKE.....	0414-2
(LGP).....	0132-4	MANIFOLD, HYDROSTATIC PUMP.....	0360-4
LINK, TRACK CHAIN MASTER.....	0132-2	MANIFOLD, HYDROSTATIC SOLENOID.....	0360-22
LINK, TRACK CHAIN MASTER		MARKER, REFLECTIVE.....	1322-2
(LGP).....	0132-4	MASTER LINK, TRACK CHAIN.....	0132-2
LOAD CENTER CIRCUIT BOARD.....	1674-12	MASTER LINK, TRACK CHAIN	
LOAD CENTER COVER.....	1674-14	(LGP).....	0132-4
LOAD SENSE PRESSURE TEST PORT AND HOSE.....	0363-8	MASTER SHOE, TRACK CHAIN.....	0132-2
LOAD SENSE SHUTTLE VALVE.....	4262-2	MASTER SHOE, TRACK CHAIN	
LOAD SENSE VALVE, FAN DRIVE PUMP.....	2160-2	(LGP).....	0132-4
LOCK, PLATFORM STORAGE COMPARTMENT.....	1812-2	MAT, FLOOR.....	1812-8
LOCKS, CAB DOOR.....	1810-6	MIRROR, REARVIEW.....	1810-10
LOUVERS, HEATER & A/C.....	1812-6	MOTOR COVER, HYDROSTATIC.....	0360-20
		MOTOR DRIVE SHAFT, HYDROSTATIC.....	0360-20
		MOTOR, HEATER CONTROL VALVE	
		(HEATER/AIR CONDITIONER).....	1830-10
		MOTOR, HYDRAULIC FAN DRIVE (COMPLETE).....	0510-6
		MOTOR, HYDRAULIC FAN DRIVE COMPONENTS.....	0510-8
		MOTOR, HYDRAULIC/HYDROSTATIC OIL COOLER	
		FAN DRIVE.....	2160-20
		MOTOR, HYDROSTATIC.....	0360-20
		MOTOR, HYDROSTATIC DRIVE (COMPLETE).....	0360-16
		MOTOR, STARTER.....	0422-2
		MOTOR, WINDSHIELD WIPER.....	1814-10
		MOUNT, TRUNNION, LGP.....	3243-4
		MOUNTING BASE, HYDRAULIC OIL RESERVOIR.....	2164-4
		MOUNTING BRACKET, A/C COMPRESSOR.....	1832-2
		MOUNTING BRACKET, CAB HEATER BOX.....	1830-4
		MOUNTING BRACKETS, ENGINE CONTROL UNIT.....	0475-2
		MOUNTING EQUIPMENT, SEAT.....	1821-2
		MOUNTING FLANGE, MAIN HYDRAULIC PUMP.....	2160-12
		MOUNTING GASKET, TURBOCHARGER.....	0416-2
		MOUNTING HANDLES.....	1810-8
		MOUNTING HARDWARE, A/C CONDENSER.....	1833-4
		MOUNTING HARDWARE, GRILLE.....	1921-2
		MOUNTING, COOLING PACKAGE.....	0510-2
		MUFFLER.....	0530-2
		MUFFLER EXHAUST PIPE.....	0530-2
		MUFFLER EXHAUST PIPE GASKET.....	0530-2
		MULTIFUNCTION CONTROLLER, FNR.....	0375-2
		MULTIFUNCTION VALVE, HYDROSTATIC PUMP	
		MANIFOLD.....	0360-4

M

MAGNETIC PICK-UP SENSOR.....	0578-2
MAIN BEARING CAPS, CYLINDER BLOCK.....	0404-4
MAIN FRAME BOTTOM COVERS.....	1746-2
MAIN FRAME BOTTOM GUARDS.....	1746-2
MAIN FRAME BOTTOM PLATES.....	1746-2
MAIN FRAME REAR COVERS.....	1910-6
MAIN HYDRAULIC CONTROL VALVE.....	2160-26
MAIN HYDRAULIC CONTROL VALVE.....	2160-28
MAIN HYDRAULIC CONTROL VALVE.....	2160-30
MAIN HYDRAULIC CONTROL VALVE	
(COMPLETE).....	2160-24
MAIN HYDRAULIC CONTROL VALVE HOSES.....	2163-6
MAIN HYDRAULIC CONTROL VALVE SEAL KITS.....	2160-26
MAIN HYDRAULIC CONTROL VALVE SOLENOIDS.....	2160-28
MAIN HYDRAULIC CONTROL VALVE SOLENOIDS.....	2160-30
MAIN HYDRAULIC CONTROL VALVE SPOOL	
BLADE LIFT AND BLADE TILT.....	2160-26
MAIN HYDRAULIC CONTROL VALVE SYSTEM	
RELIEF.....	2160-28
MAIN HYDRAULIC CONTROL VALVE SYSTEM	
RELIEF.....	2160-30
MAIN HYDRAULIC CONTROL VALVE TO	
HYDROSTATIC SOLENOID VALVE HOSE.....	2163-6
MAIN HYDRAULIC CONTROL VALVE TO PILOT	
CONTROLLER HOSE.....	2163-6
MAIN HYDRAULIC PUMP AND REGULATOR	
ASSEMBLY.....	2160-8
MAIN HYDRAULIC PUMP CASE DRAIN HOSE.....	2163-4
MAIN HYDRAULIC PUMP COUPLING.....	2160-12