

**850J TIER 3  
CRAWLER DOZER  
(SN 130886-)**



**JOHN DEERE**

**PARTS CATALOG**

**850J TIER 3  
CRAWLER DOZER(SN 130886-)**

**PC10009 (Jan-07) English**

**Worldwide Construction and Forestry Division**

**Worldwide Edition**  
Litho in U.S.A. (Revised)  
COPYRIGHT © 2007  
DEERE & COMPANY  
Moline, Illinois  
All rights reserved



## INTRODUCTION AND CUSTOMER INFORMATION

T206914A -UN-11JAN05



*RIGHT SIDE VIEW OF 850J TIER III CRAWLER  
(MANUFACTURED 2006- )*

### **TO THE CUSTOMER**

THE PART NUMBERS IN THIS PARTS CATALOG WERE CORRECT AT THE TIME THIS CATALOG WAS PUBLISHED. IT IS OUR POLICY TO CONSTANTLY IMPROVE OUR MACHINES AND, THEREFORE, PART NUMBERS MAY CHANGE. WHEN ORDERING PARTS, VERIFY PART NUMBERS THROUGH YOUR DEALER.

*(SPECIFICATIONS AND DESIGN SUBJECT TO CHANGE WITHOUT NOTICE.)*

## SERIAL NUMBER LOCATION

EACH 850J CRAWLER MAY HAVE SEVEN SERIAL NUMBERS. ONE FOR THE PRODUCT IDENTIFICATION NUMBER, ONE FOR THE ENGINE, ONE FOR THE L.H. TRACK DRIVE MOTOR, ONE FOR THE R.H. TRACK DRIVE MOTOR, ONE FOR THE HYDROSTATIC FRONT PUMP, ONE FOR THE HYDROSTATIC REAR PUMP AND ONE FOR THE TRANSMISSION CONTROL UNIT.

THE PRODUCT IDENTIFICATION NUMBER IS LOCATED ON THE RIGHT-HAND SIDE OF THE CRAWLER FRAME BELOW THE OPERATORS STATION

THE ENGINE SERIAL NUMBER PLATE IS LOCATED ON THE RIGHT-HAND SIDE OF THE CYLINDER BLOCK.

THE TRACK DRIVE MOTOR SERIAL NUMBER PLATE IS LOCATED ON THE END CAP OF THE DRIVE MOTOR.

THE FRONT HYDROSTATIC PUMP SERIAL NUMBER PLATE IS LOCATED ON THE PUMP HOUSING.

THE REAR HYDROSTATIC PUMP SERIAL NUMBER PLATE IS LOCATED ON THE PUMP HOUSING.

THE TRANSMISSION CONTROL UNIT SERIAL NUMBER IS LOCATED ON THE REAR OF THE CONTROLLER. LEFT SIDE AND RIGHT SIDE, FRONT AND REAR OF THE CRAWLER ARE VIEWED BY FACING IN THE DIRECTION OF THE CRAWLER FORWARD TRAVEL.

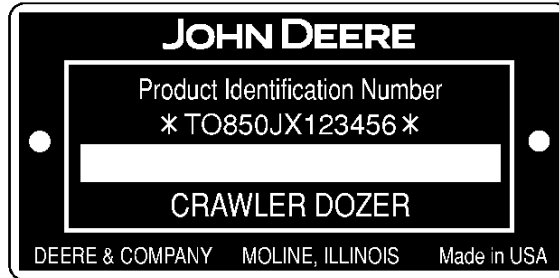
# 0001-3

850J TIER III CRAWLER DOZER (S.N. 130886- )

## PRODUCT IDENTIFICATION NUMBER (850J)

TX1008266

-UN-05JUN06



TX1008266

1. DESIGNATES CRAWLER MANUFACTURER
2. DESIGNATES CRAWLER MODEL
3. DESIGNATES CRAWLER SERIAL NUMBER
4. DESIGNATES UNIT TYPE

TO - JOHN DEERE DUBUQUE WORKS  
850JX  
123456 (EXAMPLE)  
CRAWLER

# 000I-4

850J TIER III CRAWLER DOZER (S.N. 130886- )

## ENGINE SERIAL NUMBER PLATE (850J)

RGP3513 -UN-01JAN94



RGP3513

### FIRST LINE

RG - JOHN DEERE WATERLOO ENGINE WORKS

6

081 (8.1 LITERS)

H (AIR-TO-AIR)

T - JOHN DEERE DUBUQUE WORKS

XXXXXX

### SECOND LINE

6090HT001

### DEFINES

DESIGNATES ENGINE MANUFACTURER

DESIGNATES NUMBER OF CYLINDERS

DESIGNATES LITER DISPLACEMENT

DESIGNATES TYPE OF AIR INTAKE SYSTEM

DESIGNATES USER FACTORY

DESIGNATES ENGINE SERIAL NUMBER

### APPLICATION

850J CRAWLER DOZER

## SERIAL NUMBER LISTING INFORMATION

SERIAL NUMBER INFORMATION IS LISTED TO SHOW ON WHICH MACHINES EACH PART CAN BE USED; FOR EXAMPLE:

- THE PART CAN BE USED ON ALL MACHINES.
- 000000- THE PART CAN BE USED ON ALL MACHINES BEGINNING WITH THE SERIAL NUMBER LISTED.
- 000000 THE PART CAN BE USED ON ALL MACHINES UP TO AND INCLUDING THE SERIAL NUMBER LISTED.
- 000000-000000 THE PART CAN BE USED ON ALL MACHINES BETWEEN AND INCLUDING THE SERIAL NUMBERS LISTED.

WHEN XXXXXX'S ARE LISTED IN PLACE OF A SERIAL NUMBER, A SERIAL NUMBER CHANGE WAS MADE BUT THE EXACT SERIAL NUMBER WAS NOT AVAILABLE WHEN THE CATALOG WAS PRODUCED.

## DIRECTION ARROW

ARROWS ARE USED WITH ILLUSTRATIONS TO INDICATE THE FRONT OF THE UNIT. "RIGHT-HAND" AND "LEFT-HAND" SIDES ARE DETERMINED BY FACING IN THE DIRECTION OF MACHINE FORWARD TRAVEL.

## BOX-ENCLOSED ILLUSTRATIONS

A KEY NUMBER, SHOWN IN THE PARTS LIST, IS ASSIGNED TO A BOX ENCLOSING ALL PARTS SOLD AS A SERVICE ASSEMBLY.

## COMPLETE GOODS LISTINGS

COMPLETE GOODS ARE LISTED IN BOLD FACE TYPE. ORDER SEPARATELY. DO NOT INCLUDE ON REPLACEMENT PARTS ORDER.

## SI UNITS OF MEASURE

METRIC DIMENSIONS ARE GIVEN, WHERE APPLICABLE, THROUGHOUT THIS PARTS CATALOG.

## CHANGE INDICATOR LINE

CHANGES AFFECTING THE ORDERING OF PARTS ARE IDENTIFIED BY VERTICAL LINES MARKED IN THE LEFT-HAND MARGIN OF REVISED PARTS LISTING IMAGES. A LINE IS ALSO AT THE LEFT-HAND EDGE OF THE SAME PART NUMBER IN THE NUMERICAL INDEX TO SHOW THE LOCATION OF REVISED INFORMATION.

## REMARKS AND ABBREVIATIONS

TX1007193 -UN-04MAY06

PHRASE	ENGLISH	FRANCAIS	DEUTSCH	ITALIANO	ESPAÑOL	SVENSKA
ALSO ORDER, ORD W/	Also order	Commander aussi	Ebenso bestellen	Ordinare anche	Pedir también	Beställ även
AMP	Ampere	Ampère	Ampere	Ampere	Amperio	Ampere
APPL, APPL ONLY	This application only	Uniquement pour cette utilisation	Nur für diese Anwendung	Solo per questa applicazione	Solo para este propósito	Endast för denna användning
AR	As required	Selon le besoin	Nach Bedarf	Secondo necessità	Según necesidad	Vid behov
ASSY	Complete assembly	Ensemble complet	Kompl.-Zusammenbau	Gruppo completo	Montaje completo	Komplett montering
CA, CONVENIENCE ASSY	Convenience assembly	Ensemble convenance	Komfort-Zusammenbau	Montaggio pratico	Montaje de conveniencia	Lämplig montering
CCW	Counter-clockwise	Sens anti-horaire	Gegen Uhrzeigersinn	Senso antiorario	A la izquierda	Moturs
COMPLETE	Complete	Complet	Vollständig	Completo	Completo	Fullständig
COMPLETE GOODS	Complete goods	Compléter marchandises	Vollst. Waren	Merci complete	Mercancías completas	Kompleta varor
CTL CUT TO LENGTH	Cut to length	Couper à la longueur	Auf Länge zurechtschneiden	Tagliare alla lunghezza	Corte a la longitud	Skära till längd
CW	Clockwise	Sens horaire	Im Uhrzeigersinn	In senso orario	A la derecha	Medurs
FOR	For	Pour	Für	Per	Para	För
FRONT	Front	Avant	Vorn	Anteriore	Frente	Fram
GAS	Gasoline	Essence	Benzin	Benzina	Gasolina	Bensin
HP	Horsepower	Puissance en cv	Leistung	Potenza	Potencia	Hästkraft
HFWD	Hydraulic Front-wheel Drive	Traction Avant Hydraulique	Hydraulischer Vorderradantrieb	Trazione Anteriore Idraulica	Tracción Delantera Hidraulica	Hydraulisk Framhjulsdrift
HS, HEAD MARKED	High strength, head marked	Haute résistance, tête marquée	Hochfest, vorn gekennzeichnet	Contrassegnato in testa, ad alta resistenza	Alta fuerza, marca en cabeza	Hög styrka, huvudmärkt
ID	Inside diameter	Diamètre intérieur	Innendurchmesser	Diametro interno	Diá. interior	Innerdiameter
INCH	Inch	Pouce	In.	Pollice	Pulg.	Tum
INCL KEYS	Includes keys...	Comprend les positions...	Einschließlich Schlüssel...	Include le chiavette...	Incluye posiciones...	Inklusive nycklar...
INCL, INCLUDES	Includes...	Comprend...	Enthält...	Include...	Incluye...	Inkluderar...
INCLUDES PARTS/ ITEMS MARKED	Includes parts/items marked...	Comprend les pièces/articles marqués...	Enthält gekennzeichnete Teile/Pos. ...	Include i pezzi e gli elementi contrassegnati...	Incluye piezas marcadas...	Inkluderar markerade delar/artiklar...
INNER	Inner	Intérieur	Innerer	Interno	Interno	Inre, invändig
KIT	Kit	Kit	Kit	Kit	Juego	Sats
L	Number of links	Nombre de maillons	Anzahl der Glieder	Numero di maglie	Nº de eslabones	Antal länkar
LGTH	Length	Longueur	Länge	Lunghezza	Longitud	Längd
LGP	Low Ground Pressure	Faible Pression Au Sol	Niederer Bodendruck	Bassa Pressione Sul Suelo	Baja Presion Sobre El Suelo	Laagt Marktryck
LH	Left-hand	Gauche	Links	Sinistra	Izquierda	Vänster
LT	Long Track	Chenille Longue	Mit Langem Laufwerk	Cingolo Lungo	Cadena Largo	Laangt Larvband
LOW, LOWER	Lower	Inférieur	Unterer	Inferiore	Inferior	Nedre
MAKE FROM, MF MARKED	Make from Marked	Faireavec Marqué	Herstellen von Markiert	Fabbricare da Contrassegnato	Hacer de Marcado	Tillverka av Märkt

TX1007193



## REMARKS AND ABBREVIATIONS

TX1007195

-UN-04MAY06

PHRASE	ENGLISH	FRANCAIS	DEUTSCH	ITALIANO	ESPAÑOL	SVENSKA
MATCHED SET	Matched set	Ensemble assorti	Passender Satz	Set abbinato	Sistema emparejado	Anpassad sats
MFWD	Mechanical Front-Wheel Drive	Pont Avant	Allradantrieb	Ruota Motrice Meccanica Anteriore	Traccion Delantera Mecanica	Mekanisk Framhjulsdrift
NA, NOT USED THIS APPL	Not used this application	Ne sert pas pour cette application	In dieser Anwendung nicht benutzt	Non usato in questa applicazione	No se usa en esta aplicación	Ej använd i detta sammanhang
NLA	No longer available	Epuisé	Nicht mehr lieferbar	Non più disponibile	Descontinuado	Ej längre tillgänglig
NSEP	Not supplied separately	Non livré séparément	Nicht einzeln lieferbar	Non fornito separatamente	No se suministra por separado	Kan ej erhållas separat
OD	Outside diameter	Diamètre extérieur	Außendurchmesser	Diametro esterno	Diá. exterior	Ytterdiameter
OPTIONAL	Optional	En option	Wahlweise	Opzionale	Opcional	Valfri
OR	Or	Ou	Oder	Oppure	O	Eller
ORD, ORDER	Order	Commander	Bestellen	Ordinare	Pídase	Order
OS	Oversize	Sur-dimension	Übergröße	Maggiorato	Sobretamaño	Överdimension
OUTER	Outer	Externe	Äußerer	Esterno	Externo	Yttre, utvändig
PKG, PACKG	Package, Packet of	Emballage, paquet de	Verpackung, verpackt mit	In confezione da	Paquete de	I sats; paket
PTO	Power Take Off	Prise De Force	Zapfwelle	Presa Di Forza	Toma De Fuerza	Kraftuttag
RATIO	Ratio	Rapport	Übersetzungs-verhältnis	Rapporto	Índice	Förhållande
REAR	Rear	Arrière	Hinten	Posteriore	Trasero	Bak; bakre
REMAN	Remanufactured	Echange Standard	Generalveberholt	Refatto	Refabricador por	Renoverad
REPL	Replaces	Remplace	Ersetzt	Sostituisce	Sustituye	Ersätter
RH	Right-hand	Droit	Rechts	Destra	Derecha	Höger
SN	Serial number	Numéro de série	Seriennummer	Numero di serie	Nº de serie	Seriennummer
STD	Standard	Standard	Standard	Standard	Normal	Standard
SUB	Replaced by	Remplacé par	Ersetzt durch	Sostituito da	Sustituido por	Ersatt med
SUB COMPONENTS	Substitute components (of the kit or assy)	Substituer les composants (du kit ou de l'ensemble)	Komponenten ersetzen (des Kits oder der Baugruppe)	Sostituire i componenti (del kito del gruppo)	Sustituir los componentes	Ersätta komponenterna (i satsen eller monteringen)
SUB FOR	Substitutes for	Remplace	Ersatz für	Sostituisce	Sustitución para	Ersätter
TEETH, Z	Number of gear teeth	Nombre de dents d'engrenages	Zahl der Zahnradzähne	Numero di denti dell'ingranaggio	Nº de dientes de engranaje	Antal redskapständer
TK	Thickness	Épaisseur	Stärke	Spessore	Espesor	Tjocklek
UP, UPPER	Upper	Supérieur	Oberer	Superiore	Superior	Övre
US	Undersize	Sous-dimension	Untergröße	Minorato	Subtamaño	Underdimension
USE WITH	Use with	À utiliser avec	Verwenden mit	Usare con	Usar con	Använd med
USE UNTIL EXHAUSTED	Use until exhausted	Utilisation jusqu'à épuisé	Verwenden, bis erschöpft	Usare fino all'esaurimento	Usar hasta agotar	Använda till uttömd
W/	With	Avec	Mit	Con	Con	Med; inklusive
W/O	Without	Sans	Ohne	Senza	Sin	Utan; exklusive
WHOLE GOODS	Whole goods	Marchandises entières	Vollständige Waren	Merci intere	Mercancías enteras	Hela varor
XLT	Extra Long Track	Chenille Extra Longue	Mit Extra Langem Laufwerk	Cingolo Extra Lungo	Cadena Extra Larga	Extra Laangt Larvband
VEC	Vehicle Electronic Controller	Controlleur Electronique Du Vehicule	Elektronisches Steuergeraet Des Fahrzeugs	Unità Di Comando Elettronica Del Veicolo	Unidad de Control Electronico del Vehiculo	Elektronisk Fordonsstyrenhet
VLC	Vehicle Load Center	Coffret De Repartition Du Vehicule	Verteilerstation Des Fahrzeugs	Centro Di Carico Del Veicolo	Centro De Cargas Del Vehiculo	Fordonets Elcentral

TX1007195

## ALPHABETICAL INDEX

	PAGE		PAGE
<b>A</b>			
A/C COMPRESSOR HARDWARE KIT.....	1832-10	AIR CONDITIONER SIDE COVER PLATE (S/N XXXXXX- ).....	1810-7C
A/C COMPRESSOR SHAFT SEAL KIT.....	1832-9	AIR CONDITIONING COMPRESSOR.....	1832-14
A/C KIT, COMPRESSOR HARDWARE.....	1832-10	AIR CONDITIONING COMPRESSOR BELTS (850J).....	1832-6
ACCESS COVER OIL.....	1741-2	AIR CONDITIONING COMPRESSOR BRACKETS (850J).....	1832-6
ACCESS COVER, ENGINE (850J).....	1912-4	AIR CONDITIONING COMPRESSOR PULLEY (850J).....	1832-6
ACCESS COVER, ENGINE (850J) WASTE HANDLER.....	1912-6	AIR CONDITIONING COMPRESSOR(850J).....	1832-6
ACCESS COVER, REAR.....	1741-2	AIR CONDITIONING CONDENSER FAN.....	1832-2
ACCESSORY, POWER AND JUNCTION BLOCK 24/12 VOLT.....	2006-2	AIR CONDITIONING CONDENSER WIRING HARNES.....	1832-2
ACCUMULATOR LABEL.....	1322-2	AIR CONDITIONING CORE CONDENSER.....	1832-2
ACCUMULATOR, PILOT CONTROL (ALL HYDRAULIC).....	3262-14	AIR CONDITIONING HOUSING.....	1832-2
ACCUMULATOR, PILOT CONTROL (OUTSIDE DOZER).....	3262-12	AIR CONDITIONING LOW AND HIGH PRESSURE SWITCH.....	1832-2
ACTUATOR KIT, SEAT SUSPENSION (DELUXE).....	1821-20	AIR CONDITIONING PLUMBING.....	1832-4
ACTUATORS AND MODULES, IGC HYDRAULIC CONTROL VALVE (FOURTH FUNCTION).....	3262-9A	AIR CONDITIONING PLUMBING GUARD (S/N -XXXXXX).....	1810-4
ACTUATORS AND MODULES, INTEGRATED GRADE CONTROL HYDRAULIC CONTROL VALVE.....	3262-8	AIR CONDITIONING PLUMBING GUARD (S/N XXXXXX- ).....	1810-7A
ADJUSTER AND COMPONENT PARTS, TRACK CHAIN.....	0133-10	AIR CONDITIONING PLUMBING GUARD (S/N -XXXXXX).....	1810-6
ADJUSTER AND COMPONENT PARTS, TRACK CHAIN TENSION.....	0133-10	AIR CONDITIONING PLUMBING GUARD (S/N XXXXXX- ).....	1810-7C
AIR CLEANER (850J).....	0521-8	AIR CONDITIONING RECEIVER DRYER.....	1832-2
AIR CLEANER DECAL.....	1322-2	AIR CONDITIONING REFRIGERANT LINE.....	1832-2
AIR CLEANER DUST UNLOADER VALVE(850J).....	0521-8	AIR CONDITIONING REFRIGERANT LINES.....	1832-4
AIR CLEANER FILTER ELEMENT PRIMARY AND SECONDARY (850J).....	0521-8	AIR CONTROL VALVE (AIR SUSPENSION).....	1821-28
AIR CLEANER INTAKE HOSE(850J).....	0521-8	AIR COVER, RECIRCULATION (S/N -XXXXXX).....	1810-4
AIR CLEANER PRIMARY ELEMENT(850J).....	0521-8	AIR COVER, RECIRCULATION (S/N -XXXXXX).....	1810-6
AIR CLEANER SECONDARY ELEMENT(850J).....	0521-8	AIR COVER, RECIRCULATION (S/N XXXXXX- ).....	1810-7A
AIR CLEANER SENSOR (850J).....	0521-8	AIR COVER, RECIRCULATION (S/N XXXXXX- ).....	1810-7C
AIR COMPRESSOR MOUNTING (HT001).....	0400-57	AIR DUCT WORK FOAM.....	1810-4
AIR COMPRESSOR SERVICE KIT (9902).....	0400-72	AIR DUCT WORK FOAM (S/N XXXXXX- ).....	1810-7A
AIR CONDITIONER AND HEATER BLOWER SWITCH.....	1832-2	AIR FILTER, FRESH AIR (UPPER).....	1831-8
AIR CONDITIONER AND HEATER BLOWER SWITCH (S/N -XXXXXX).....	1810-6	AIR INTAKE (HT001).....	0400-15
AIR CONDITIONER AND HEATER BLOWER SWITCH (S/N XXXXXX- ).....	1810-7C	AIR LINES (AIR SUSPENSION).....	1821-28
AIR CONDITIONER AND HEATER BLOWER SWITCH (UPPER).....	1831-8	AIR PRE-CLEANER.....	0522-2
AIR CONDITIONER AND HEATER TEMPERATURE SWITCH.....	1832-2	AIR PRE-CLEANER CONVERSION KIT, PARTS ALSO ON AIR PRE-CLEANER PAGE(850J).....	1911-4
AIR CONDITIONER AND HEATER TEMPERATURE SWITCH (UPPER).....	1831-8	AIR PRE-CLEANER CONVERSION KIT, PARTS ALSO ON HOOD AND SOUND PAGE.....	0522-2
AIR CONDITIONER FIELD KIT.....	1832-2	AIR PRE-CLEANER INTAKE HOSE.....	0522-2
AIR CONDITIONER ON/OFF SWITCH.....	1832-2	AIR PRE-CLEANER ROTARY EJECTOR.....	0522-2
AIR CONDITIONER REAR COVER PLATE (S/N -XXXXXX).....	1810-4	AIR PRE-CLEANER SEPARATOR.....	0522-2
AIR CONDITIONER REAR COVER PLATE (S/N -XXXXXX).....	1810-6	AIR SUSPENSION SEAT TOP PLATE.....	1821-26
AIR CONDITIONER REAR COVER PLATE (S/N XXXXXX- ).....	1810-7A	AIR SUSPENSION SEAT WIRING HARNESS FROM SEAT COMPRESSOR HARNESS TO FUSE BOX.....	1821-26
AIR CONDITIONER REAR COVER PLATE (S/N XXXXXX- ).....	1810-7C	ALARM, BACKUP.....	2004-4
AIR CONDITIONER SIDE COVER PLATE (S/N -XXXXXX).....	1810-4	ALARM, 12 VOLT WITH SHUTTER.....	1676-8
AIR CONDITIONER SIDE COVER PLATE (S/N -XXXXXX).....	1810-6	ALL HYDRAULIC LIFT CYLINDER, INSIDE PUSH BEAM(850J).....	3263-18
AIR CONDITIONER SIDE COVER PLATE (S/N XXXXXX- ).....	1810-7A	ALL HYDRAULIC(PAT) BLADE CUPPED END BITS.....	3201-4
		ALTERNATOR AUTOMATIC BELT TENSIONER (80 AMP)(850J).....	1672-8
		ALTERNATOR BELT WITH ROPS WITHOUT A/C (850J).....	1672-8
		ALTERNATOR HARNESS(80 AMP)(850J).....	1672-8

## ALPHABETICAL INDEX - CONTINUED

	PAGE		PAGE
ALTERNATOR 80 AMP (850J).....	1672-8	BATTERIES AND BATTERY CABLES.....	1671-2
ANGLE CONTROL VALVE, COIL AND CARTRIDGE (PILOT CONTROLS) (ALL HYDRAULIC) .....	3262-14	BATTERY CABLES NEGATIVE AND POSITIVE .....	1671-2
ANGLE CYLINDER BARREL (ALL HYDRAULIC).....	3265-18	BATTERY DISCONNECT LABEL .....	1671-2
ANGLE CYLINDER BARREL (ALL HYDRAULIC) (850J).....	3265-22	BATTERY GROUND STRAP .....	1671-2
ANGLE CYLINDER HEAD END PIN .....	3243-2	BATTERY HOLDOWN.....	1671-2
ANGLE CYLINDER HYDRAULIC HOSES (ALL HYDRAULIC).....	3263-8	BATTERY RUBBER BOOT .....	1671-2
ANGLE CYLINDER PISTON (ALL HYDRAULIC) .....	3265-18	BATTERY STANDARD .....	1671-2
ANGLE CYLINDER PISTON (ALL HYDRAULIC) (850J).....	3265-22	BATTERY SWITCH, DISCONNECT .....	1671-2
ANGLE CYLINDER ROD (ALL HYDRAULIC) .....	3265-18	BATTERY TERMINAL COVER .....	1671-2
ANGLE HYDRAULIC CYLINDER COMPLETE (ALL HYDRAULIC).....	3265-14	BEAM, PUSH .....	3243-4
ANGLE HYDRAULIC CYLINDER GUARD .....	3265-24	BEARING ROLLER KIT (AIR SUSPENSION) .....	1821-26
ANGLE SECTION CONTROL VALVE (ALL HYDRAULIC).....	3262-26	BEARING, CRANKSHAFT THRUST (HT001) .....	0400-39
ANGLE SECTION SPOOL VALVE PRESSURE RELIEF.....	3262-26	BEARING, HYDROSTATIC PUMP PISTON (850J).....	0355-32
ANTENNA, RADIO .....	2001-2	BEARING, HYDROSTATIC SWASHPLATE (850J).....	0355-32
ANTI CAVITATION CHECK VALVE LIFT SECTION ALL HYDRAULIC .....	3262-22	BEARINGS, CARRIER ROLLER .....	0133-16
ARM, FRONT WINDOW WIPER .....	1814-6	BEARINGS, MAIN (HT001).....	0400-39
ARMREST (AIR SUSPENSION) .....	1821-24	BELT TENSIONER, ALTERNATOR AUTOMATIC (850J).....	1672-8
ARMREST (DELUXE).....	1821-14	BELT, AIR CONDITIONING COMPRESSOR .....	1832-14
ARMREST PLATE (AIR SUSPENSION).....	1821-24	BELT, ALTERNATOR WITH ROPS WITHOUT A/C (850J).....	1672-8
ARMREST PLATE (DELUXE).....	1821-14	BELT, TWO INCH SEAT .....	1821-2
ARMREST, STANDARD SEAT.....	1821-4	BELTS, AIR CONDITIONING COMPRESSOR (850J).....	1832-6
AUTOMATIC BELT TENSIONER, ALTERNATOR (80 AMP)(850J).....	1672-8	BIT, BLADE END.....	3201-4
AUXILIARY DRIVE COVER (HT001).....	0400-49	BIT, END SEMI-U.....	3201-6
AUXILIARY HOSES AND PLUMBING, REAR.....	3263-10	BLADE , FRONT WINDOW WIPER.....	1814-6
AUXILIARY PILOT CONTROL COVER PLATE (ALL HYDRAULIC).....	3262-14	BLADE ANGLE HYDRAULIC CYLINDER (ALL HYDRAULIC).....	3265-18
AUXILIARY PILOT CONTROL COVER PLATE (OUTSIDE DOZER) .....	3262-12	BLADE ANGLE HYDRAULIC CYLINDER HOSES (ALL HYDRAULIC).....	3263-8
AUXILIARY PILOT CONTROL PLUMBING .....	2163-14	BLADE BOLTS .....	3201-4
AUXILIARY PILOT CONTROLLER HANDLE/LEVER (WINCH).....	3262-6	BLADE CUPPED END BIT, SEMI-U .....	3201-6
AUXILIARY PILOT CONTROLLER, AUXILIARY VALVE AND HYDRAULICS (WINCH) .....	3262-6	BLADE CUPPED END BIT, STRAIGHT .....	3201-8
AUXILIARY SECTION CONTROL VALVE (ALL HYDRAULIC) (OUTSIDE DOZER).....	3262-26	BLADE CUPPED END BITS FOR ALL HYDRAULIC (PAT).....	3201-4
AUXILIARY SECTION VALVE LABEL (WINCH).....	3262-6	BLADE CUTTING EDGE .....	3201-2
AUXILIARY VALVE WITH AUXILIARY PILOT CONTROLLER(WINCH) AND HYDRAULICS.....	3262-6	BLADE CUTTING EDGE .....	3201-4
AUXILIARY VALVE(WINCH) CIRCUIT RELIEF VALVE .....	3262-6	BLADE CUTTING EDGE SEMI-U.....	3201-6
		BLADE CUTTING EDGE, STRAIGHT .....	3201-8
		BLADE END BIT .....	3201-4
		BLADE LIFT CYLINDER HYDRAULIC HOSES (OUTSIDE DOZER)(850J) .....	3263-4
		BLADE PINS .....	3201-2
		BLADE PINS .....	3201-4
		BLADE TILT CYLINDER COMPLETE AND COMPONENT PARTS(ALL HYDRAULIC) .....	3265-16
		BLADE TILT CYLINDER HYDRAULIC HOSES (OUTSIDE DOZER).....	3263-6
		BLADE TILT CYLINDER HYDRAULIC HOSES (OUTSIDE DOZER).....	3263-22
		BLADE 146 INCH (CONVENIENCE ASSEMBLY ) (ALL HYDRAULIC-850J)(LONG TRACK) .....	3201-4
		BLADE 146 INCH (CONVENIENCE ASSEMBLY) (ALL HYDRAULIC-850J)(LONG TRACK) .....	3201-2
		BLADE 158 INCH (CONVENIENCE ASSEMBLY) (ALL HYDRAULIC-850J)(WIDE LONG TRACK) .....	3201-2
		BLADE 158 INCH (CONVENIENCE ASSEMBLY) (ALL HYDRAULIC-850J)(WIDE LONG TRACK) .....	3201-4
		BLADE 168 INCH (CONVENIENCE ASSEMBLY) (ALL HYDRAULIC-850J)(LOW GROUND PRESS).....	3201-2
		BLADE 168 INCH (CONVENIENCE ASSEMBLY) (ALL HYDRAULIC-850J)(LOW GROUND PRESS).....	3201-4
		BLADE, CUTTING EDGES AND END BITS STRAIGHT .....	3201-8
<b>B</b>			
BACK PAD CLIPS, SEAT, X-MAS TREE.....	1821-30		
BACK, SEAT PAD .....	1821-2		
BACKUP ALARM .....	2004-4		
BAFFLES, ENGINE SIDE SHIELD (850J).....	1912-4		
BALL, C-FRAME PIVOT .....	3243-2		
BARREL, ANGLE CYLINDER (ALL HYDRAULIC).....	3265-18		
BARREL, ANGLE CYLINDER (ALL HYDRAULIC) (850J).....	3265-22		
BARREL, CAB TILT CYLINDER.....	1810-18		
BARREL, LIFT CYLINDER(OUTSIDE DOZER) .....	3265-4		
BARREL, TILT CYLINDER (ALL HYDRAULIC) .....	3265-16		
BARREL, TILT CYLINDER(OUTSIDE DOZER) (850J).....	3265-12		

## ALPHABETICAL INDEX - CONTINUED

	PAGE		PAGE
BLADE, HYDRAULIC SIX WAY LABEL (S/N -XXXXXX) .....	1810-4	BRAKE, FINAL DRIVES (CONTINUED) .....	0201-6
BLADE, HYDRAULIC SIX WAY LABEL (S/N XXXXXX- ) .....	1810-7A	BULB, DOME LIGHT .....	1810-7C
BLADE, REAR WIPER .....	1814-8	BULB, DOMELIGHT .....	1810-6
BLADE, SEMI-U .....	3201-6	BULB, LIGHT (CAB FIELD OR OPTIONAL) .....	1673-6
BLOCK, CYLINDER (HT001) (PAGE 1) .....	0400-37	BULB, LIGHT CAB STANDARD .....	1673-2
BLOCK, SHORT (9901) .....	0400-95	BULB, LIGHT ROPS .....	1673-8
BLOWER FAN HEATER (UPPER) .....	1831-8	BULB, WORK LIGHT .....	1673-4
BLOWER SWITCH, AIR CONDITIONER AND HEATER .....	1832-2	BULKHEAD PLATE (ALL HYDRAULIC) (850J) .....	3263-22
BLOWER SWITCH, HEATER AND AIR CONDITIONER (UPPER) .....	1831-8	BULKHEAD PLATE (OUTSIDE DOZER) .....	3263-6
BLOWER WITH MOTOR ROPS UNDER SEAT HEATER .....	1831-2	BULKHEAD PLATE, REAR HYDRAULIC .....	1927-2
BOLTS, BLADE .....	3201-4	BUMPER KIT (AIR SUSPENSION) .....	1821-28
BOOT CLIP KIT (AIR SUSPENSION) .....	1821-26	BUMPER, DOOR .....	1813-4
BOOT KIT (AIR SUSPENSION) .....	1821-26	BUSHING AND EXTENDED LIFE BUSHING, TRACK CHAIN (850J) .....	0132-8
BOOT KIT (DELUXE) .....	1821-18	BUSHING AND EXTENDED LIFE BUSHING, TRACK CHAIN (850J) .....	0132-10
BOOT PILOT CONTROL (ALL HYDRAULIC) .....	3262-14	BUSHING KIT, TRACK CHAIN PIN AND (850J) .....	0132-8
BOOT PILOT CONTROL (OUTSIDE DOZER) .....	3262-12	BUSHING KIT, TRACK CHAIN PIN AND (850J) .....	0132-10
BOOT, BATTERY BOOT .....	1671-2	BUSHING WITH OUTSIDE DOZER, LIFT CYLINDER YOKE TUBE .....	1741-2
BOOT, SINGLE LEVER CONTROL .....	0315-6	BUSHING, C-FRAME ALL HYDRAULIC MOUNT BUSHING .....	1741-2
BOOT, SINGLE LEVER CONTROL (CONTINUED) .....	0315-8	BUSHINGS C-FRAME .....	3243-2
BORE SEAL KIT, CAB TILT CYLINDER .....	1810-18	BYPASS START WARNING LABEL .....	0400-27
BOX, TOOL (REAR STORAGE COMPARTMENT) .....	2005-2	BYPASS VALVE OIL COOLER/TANK .....	0362-2
BRACKET FOR CAB HARNESS WITH INTEGRATED GRADE CONTROL .....	1674-16	BYPASS VALVE OIL COOLER/TANK .....	0362-4
BRACKET FOR HYDRAULIC FAN DRIVE, HYDRAULIC FILTER .....	2164-6	BYPASS VALVE PILOT, TANK .....	0362-2
BRACKET MOTOR ATTACHING, ROPS UNDER SEAT HEATER .....	1831-2	BYPASS VALVE PILOT, TANK .....	0362-4
BRACKET, AIR CONDITIONING COMPRESSOR .....	1832-14	BYPASS VALVE, HYDRAULIC COOLER, BRACKETS, HYDRAULIC HOSES/FITTINGS .....	0511-10
BRACKET, HYDRAULIC FILTER .....	2164-4	BYPASS VALVE, HYDROSTATIC CHARGE FILTER .....	0362-2
BRACKET, LIGHT ROPS .....	1673-8	BYPASS VALVE, HYDROSTATIC CHARGE FILTER .....	0362-4
BRACKET, LIGHT(CAB FIELD OR OPTIONAL) .....	1673-6		
BRACKET, PARK LOCK SUPPORT .....	1115-2	<b>C</b>	
BRACKET, POWER TRAIN/ENGINE CRADLE .....	0540-2	C-FRAME .....	3243-2
BRACKET, SINGLE LEVER CONTROL .....	0315-6	C-FRAME ALL HYDRAULIC MOUNT BUSHING .....	1741-2
BRACKET, SINGLE LEVER CONTROL (CONTINUED) .....	0315-8	C-FRAME BUSHINGS .....	3243-2
BRACKET, VEHICLE ELECTRICAL CENTER .....	1674-8	C-FRAME LUBRICATION HOSES .....	3243-2
BRACKETS WITH TRACK CHAIN IDLER AND COVER .....	0133-12	C-FRAME PINS .....	3243-2
BRACKETS, AIR CONDITIONING COMPRESSOR (850J) .....	1832-6	C-FRAME PITCH .....	3243-2
BRACKETS, COOLER WITH INTEGRATED GRADE CONTROL .....	0511-12	CAB COMPONENTS (S/N -XXXXXX) .....	1810-4
BRACKETS, HYDRAULIC COOLER, HYDRAULIC HOSES/FITTINGS .....	0511-10	CAB COMPONENTS (S/N XXXXXX- ) .....	1810-7A
BRAKE CARTRIDGE VALVE HYDROSTATIC .....	0362-2	CAB COMPONENTS (CONTINUED) (S/N -XXXXXX) .....	1810-6
BRAKE CARTRIDGE VALVE HYDROSTATIC .....	0362-4	CAB COMPONENTS (CONTINUED) (S/N XXXXXX- ) .....	1810-7C
BRAKE HOSES, PARKING .....	0363-2	CAB DOOR FRAME AND GLASS .....	1813-2
BRAKE PUMP OFF RELIEF VALVE .....	0362-2	CAB DOOR HOLD OPEN .....	1813-4
BRAKE PUMP OFF RELIEF VALVE .....	0362-4	CAB DOOR HOLD OPEN HANDLE GRIP .....	1813-4
BRAKE/CAB SELECTOR VALVE .....	0362-2	CAB DOOR HOLD OPEN LATCH .....	1813-4
BRAKE/CAB SELECTOR VALVE .....	0362-4	CAB DOOR LATCH .....	1813-2
BRAKE/DECELERATOR PEDAL .....	0515-4	CAB DOOR LATCH COVER .....	1813-2
BRAKE/DECELERATOR SENSOR, ROTARY .....	0515-4	CAB DOORS AND LATCHES .....	1813-2
BRAKE/DECELERATOR SHAFT .....	0515-4	CAB FIELD OR OPTIONAL WORK LIGHT HARNESS .....	1673-6
BRAKE/DECELERATOR SUPPORT .....	0515-4	CAB FIELD OR OPTIONAL WORK LIGHTS SWITCH .....	1673-6
BRAKE, FINAL DRIVES .....	0201-2	CAB FRESH AIR FILTER (UPPER) .....	1831-8
BRAKE, FINAL DRIVES (CONTINUED) .....	0201-4	CAB FUSEBLOCK LABEL (S/N -XXXXXX) .....	1810-6

## ALPHABETICAL INDEX - CONTINUED

	PAGE		PAGE
CAB FUSEBLOCK LABEL		CAPSULE, PILOT CONTROL METERING.....	3262-16
(S/N XXXXXX- ) .....	1810-7C	CARRIER ROLLER BEARINGS.....	0133-16
CAB HARNESS WITH INTEGRATED GRADE		CARRIER ROLLER COVER.....	0133-16
CONTROL AND BRACKET .....	1674-16	CARRIER ROLLER SUPPORT.....	0133-16
CAB HEADLINER, FRONT (WITH LOUVERS)		CARRIER ROLLER WITH COMPONENT PARTS.....	0133-16
(S/N -XXXXXX) .....	1810-4	CARTRIDGE VALVE (HYDROSTATIC) BRAKE.....	0362-2
CAB HEADLINER, FRONT (WITH LOUVERS)		CARTRIDGE VALVE (HYDROSTATIC) BRAKE.....	0362-4
(S/N XXXXXX- ) .....	1810-7A	CARTRIDGE VALVE, PILOT CONTROLS	
CAB HEATER (UPPER).....	1831-8	(ALL HYDRAULIC).....	3262-14
CAB HEATER HOSE.....	1831-6	CARTRIDGE VALVE, PILOT CONTROLS	
CAB HEATER PLUMBING.....	1831-6	(OUTSIDE DOZER).....	3262-12
CAB HEATER THERMAL		CARTRIDGE, ANGLE PILOT CONTROL VALVE	
(UPPER).....	1831-8	COIL AND (ALL HYDRAULIC).....	3262-14
CAB HEATER THERMOSTAT		CENTER GUARD.....	1741-2
(UPPER).....	1831-8	CENTER ROLLER GUIDE(LOW GROUND PRESSURE,	
CAB HI-INTENSITY WORK LIGHTS.....	1673-6	LONG TRACK AND LONG TRACK, WIDE TRACK.....	0131-10
CAB LIGHTS AND LAMP HOUSINGS, STANDARD.....	1673-2	CENTER TRACK CHAIN GUIDES(ON 8 ROLLER	
CAB LIGHTS WIRING HARNESS, STANDARD.....	1673-2	MACHINES ONLY).....	0131-12
CAB LIGHTS, HI-INTENSITY.....	1673-6	CHAIN BUSHING AND EXTENDED LIFE	
CAB NOISE REDUCTION FOAM/ISOLATOR.....	1807-2	BUSHING, TRACK (850J).....	0132-8
CAB PARTS		CHAIN BUSHING AND EXTENDED LIFE	
(S/N XXXXXX- ) .....	1810-7A	BUSHING, TRACK (850J).....	0132-10
CAB PARTS (S/N -XXXXXX) .....	1810-4	CHAIN DRIVE SPROCKET 850J, TRACK	
CAB TILT CYLINDER BARREL.....	1810-18	RECESSED WITH WASTE HANDLER.....	0132-16
CAB TILT CYLINDER COMPONENTS.....	1810-18	CHAIN DRIVE SPROCKET, TRACK.....	0132-16
CAB TILT CYLINDER PISTON.....	1810-18	CHAIN GUIDES.....	0131-6
CAB TILT CYLINDER ROD.....	1810-18	CHAIN GUIDES, TRACK (CENTER)(ON 8 ROLLER	
CAB TILT CYLINDER SEAL KITS.....	1810-18	MACHINES ONLY).....	0131-12
CAB TILT, HAND PUMP FOR.....	0362-2	CHAIN PIN AND BUSHING KIT, TRACK	
CAB TILT, HAND PUMP FOR.....	0362-4	(850J).....	0132-8
CAB UP/DOWN SELECTOR VALVE.....	0362-2	CHAIN PIN AND BUSHING KIT, TRACK	
CAB UP/DOWN SELECTOR VALVE.....	0362-4	(850J).....	0132-10
CAB WELDMENT.....	1811-4	CHAIN SHOE (850J), TRACK MASTER SHOE AND	
CAB WINDOW.....	1814-2	EXTREME SERVICE.....	0132-8
CAB WIRING HARNESS WITH INTEGRATED GRADE		CHAIN SHOE (850J), TRACK MASTER SHOE AND	
CONTROL.....	1674-16	EXTREME SERVICE.....	0132-10
CAB/BRAKE SELECTOR VALVE.....	0362-2	CHAIN WITH EXTENDED LIFE BUSHINGS, TRACK	
CAB/BRAKE SELECTOR VALVE.....	0362-4	(COMPLETE)(850J).....	0132-12
CAB/ROPS HARNESS.....	1674-6	CHAIN WITH EXTENDED LIFE BUSHINGS, TRACK	
CAB/ROPS MOUNTS AND ISOLATORS.....	1811-6	(COMPLETE)(850J).....	0132-14
CAB/ROPS ROOF HARNESS.....	1674-6	CHAIN WITH EXTREME SERVICE SHOES AND	
CAB/ROPS TIPPING PROCEDURE LABEL.....	1322-2	EXTENDED LIFE BUSHINGS (850J),TRACK.....	0132-12
CAB/ROPS WIRING HARNESS.....	1674-6	CHAIN WITH EXTREME SERVICE SHOES AND	
CAB, RECTANGULAR LOUVER		EXTENDED LIFE BUSHINGS (850J),TRACK.....	0132-14
(S/N -XXXXXX) .....	1810-4	CHAIN WITH EXTREME SERVICE SHOES, TRACK	
CAB, RECTANGULAR LOUVER		(COMPLETE)(850J).....	0132-12
(S/N XXXXXX- ) .....	1810-7A	CHAIN WITH EXTREME SERVICE SHOES, TRACK	
CABLES, NEGATIVE AND POSITIVE BATTERY.....	1671-2	(COMPLETE)(850J).....	0132-14
CAM COVER PLATE (HT001).....	0400-55	CHAIN, TRACK LUBRICATED	
CAM CYLINDER LOCK		WITHOUT SHOES (850J).....	0132-8
(S/N -XXXXXX) .....	1810-6	CHAIN, TRACK LUBRICATED	
CAM CYLINDER LOCK		WITHOUT SHOES (850J).....	0132-10
(S/N XXXXXX- ) .....	1810-7C	CHAIN, TRACK, LUBRICATED WITH	
CAM FOLLOWER (HT001).....	0400-68	SHOES (COMPLETE) (850J).....	0132-12
CAM KIT, SEAT SUSPENSION (DELUXE).....	1821-20	CHAIN, TRACK, LUBRICATED WITH	
CAMSHAFT (HT001).....	0400-37	SHOES (COMPLETE) (850J).....	0132-14
CAMSHAFT SERVICE KIT (HT001).....	0400-68	CHARGE FILTER BYPASS VALVE, HYDROSTATIC.....	0362-2
CAN TERMINATION RESISTOR.....	1674-6	CHARGE FILTER BYPASS VALVE, HYDROSTATIC.....	0362-4
CAN TERMINATION RESISTOR (850J).....	1674-12	CHARGE PRESSURE SENSOR, HYDROSTATIC.....	0362-2
CAP WIPER WASHER RESERVOIR.....	1814-4	CHARGE PRESSURE SENSOR, HYDROSTATIC.....	0362-4
CAP, FAST FUEL RECEIVER.....	0564-4	CHARGE RELIEF POPPET, HYDROSTATIC TRACK	
CAP, FAST FUEL TANK FILLER.....	0564-4	DRIVE MOTOR END CAP (850J).....	0355-38
CAP, FUEL TANK FILLER.....	0564-2	CHARGE SYSTEM, HYDROSTATIC PUMP	
CAP, LIFT VALVE SECTION SPOOL.....	3262-22	(850J).....	0355-24
CAP, RADIATOR (850J).....	0511-8	CHART, PERIODIC SERVICE.....	1322-2
CAP, WIPER WASHER TANK.....	1814-4	CHECK VALVE, ANTI CAVITATION LIFT	
CAP, MAIN BEARING (HT001).....	0400-37	SECTION ALL HYDRAULIC.....	3262-22

## ALPHABETICAL INDEX - CONTINUED

	PAGE		PAGE
CHRISTMAS TREE CLIP (S/N -XXXXXX) .....	1810-4	CONTROL LEVER, PARK LOCK.....	1115-2
CHRISTMAS TREE CLIP (S/N XXXXXX- ) .....	1810-7A	CONTROL LEVER, TRANSMISSION/HYDROSTATIC.....	0315-6
CHROME EXHAUST STACK AND MUFFLER (850J) .....	0531-6	CONTROL MOTOR, HYDROSTATIC TRACK DRIVE MOTOR (850J) .....	0355-40
CIRCUIT RELIEF VALVE, AUXILIARY VALVE (WINCH) .....	3262-6	CONTROL PILOT VALVE, PRESSURE (850J) .....	0355-34
CLAMP, ROCKER ARM SHAFT (HT001) .....	0400-43	CONTROL UNIT WITH INTEGRATED GRADE CONTROL, ELECTRONIC/HYDRAULIC .....	0511-10
CLIP, CHRISTMAS TREE (S/N -XXXXXX) .....	1810-4	CONTROL UNIT, TRANSMISSION .....	0375-2
CLIP, CHRISTMAS TREE (S/N XXXXXX- ) .....	1810-7A	CONTROL VALVE ANGLE SECTION (ALL HYDRAULIC) .....	3262-26
CLIPS, X-MAS TREE, SEAT BACK .....	1821-30	CONTROL VALVE AUXILIARY SECTION (ALL HYDRAULIC) (OUTSIDE DOZER) .....	3262-26
CLOTH HEADREST (AIR SUSPENSION) .....	1821-22	CONTROL VALVE CONVENIENCE ASSEMBLY (2 SPOOL) OUTSIDE DOZER, HYDRAULIC .....	3262-20
CLOTH SEAT (AIR SUSPENSION) .....	1821-22	CONTROL VALVE CONVENIENCE ASSEMBLY (3 SPOOL) OUTSIDE DOZER, HYDRAULIC .....	3262-24
CLOTH SEAT (DELUXE) .....	1821-12	CONTROL VALVE CONVENIENCE ASSEMBLY (3 SPOOL) PAT DOZER, HYDRAULIC .....	3262-28
CLOTH SEAT BACK (AIR SUSPENSION) .....	1821-22	CONTROL VALVE CONVENIENCE ASSEMBLY (4 SPOOL) PAT DOZER, HYDRAULIC .....	3262-32
CLOTH SEAT PAD (AIR SUSPENSION) .....	1821-22	CONTROL VALVE HYDRAULIC HOSE TO HYDRAULIC FILTER (ALSO WITH WINCH) .....	2164-4
CLUTCH & PULLEY KIT, A/C COMPRESSOR .....	1832-14	CONTROL VALVE INLETS, OUTLETS AND TIE RODS .....	3262-18
COIL AND CARTRIDGE, ANGLE PILOT CONTROL VALVE (ALL HYDRAULIC) .....	3262-14	CONTROL VALVE MOUNTING PLATE, INTEGRATED GRADE .....	3262-8
COIL, HYDROSTATIC CONTROL VALVE SOLENOID VALVE AND .....	0362-2	CONTROL VALVE PRESSURE SWITCH (2 SPOOL) OUTSIDE DOZER, HYDRAULIC .....	3262-20
COIL, HYDROSTATIC CONTROL VALVE SOLENOID VALVE AND .....	0362-4	CONTROL VALVE PRESSURE SWITCH (3 SPOOL) OUTSIDE DOZER, HYDRAULIC .....	3262-24
COLD WEATHER START AID SWITCH/ETHER .....	0505-2	CONTROL VALVE PRESSURE SWITCH (3 SPOOL) PAT DOZER, HYDRAULIC .....	3262-28
COLD WEATHER STARTING AID (HT001) .....	0400-35	CONTROL VALVE PRESSURE SWITCH (4 SPOOL) PAT DOZER, HYDRAULIC .....	3262-32
COLD WEATHER STARTING AID/ETHER .....	0505-2	CONTROL VALVE SOLENOID VALVE AND COIL HYDROSTATIC .....	0362-2
COMPARTMENT, REAR STORAGE (TOOLBOX) .....	2005-2	CONTROL VALVE SOLENOID VALVE AND COIL HYDROSTATIC .....	0362-4
COMPENSATOR, IGC HYDRAULIC CONTROL VALVE (FOURTH FUNCTION) .....	3262-9A	CONTROL VALVE TILT SECTION ALL HYDRAULIC OR OUTSIDE DOZER, HYDRAULIC .....	3262-26
COMPENSATOR, INTEGRATED GRADE CONTROL HYDRAULIC CONTROL VALVE .....	3262-8	CONTROL VALVE TO BLADE LIFT CYLINDER HYDRAULIC HOSES (OUTSIDE DOZER) (850J) .....	3263-4
COMPONENTS, CAB (S/N -XXXXXX) .....	1810-4	CONTROL VALVE TO HYDRAULIC PUMP PRESSURE HOSE (ALSO WITH WINCH) .....	2163-4
COMPONENTS, CAB (S/N XXXXXX- ) .....	1810-7A	CONTROL VALVE, ELECTRONIC DISPLACEMENT (850J) .....	0355-40
COMPONENTS, CAB TILT CYLINDER .....	1810-18	CONTROL VALVE, HYDRAULIC (FOR INTEGRATED GRADE CONTROL AND COMPONENTS) .....	3262-8
COMPONENTS, ROPS .....	1810-2	CONTROL VALVE, HYDRAULIC, IGC, (FOURTH FUNCTION) .....	3262-9A
COMPRESSION LATCH-REAR STORAGE COMPARTMENT (TOOLBOX) .....	2005-2	CONTROL VALVE, HYDROSTATIC INTEGRATED .....	0362-2
COMPRESSOR, AIR (HT001) .....	0400-57	CONTROL VALVE, HYDROSTATIC INTEGRATED .....	0362-4
COMPRESSOR, AIR CONDITIONING .....	1832-14	CONTROL VALVE, HYDROSTATIC PUMP DISPLACEMENT (850J) .....	0355-34
COMPRESSOR, AIR CONDITIONING (850J) .....	1832-6	CONTROL WITH SPEED IN GRIP, SINGLE LEVER .....	0315-6
COMPRESSOR, 12 VOLT (AIR SUSPENSION) .....	1821-26	CONTROL, PILOT PRESSURE (850J) .....	0355-40
CONDENSER FAN AIR CONDITIONING .....	1832-2	CONTROL, SEAT SLIDE (ALL SEATS) .....	1821-8
CONDENSER, AIR CONDITIONING CORE .....	1832-2	CONTROL, SEAT TILT (ALL SEATS) .....	1821-8
CONNECTING ROD (HT001) .....	0400-41	CONTROL, SINGLE LEVER (CONTINUED) .....	0315-8
CONNECTOR, TORQUE TORSIONAL COUPLING (850J) .....	0325-4	CONTROLLER, AUXILIARY PILOT VALVE AND HYDRAULICS (WINCH) .....	3262-6
CONNECTORS AND FITTINGS CONTROL VALVE 2 SPOOL OUTSIDE DOZER .....	3262-20	CONTROLLER, HYDRAULIC COOLER AND PLUMBING INTEGRATED GRADE .....	0511-12
CONNECTORS AND FITTINGS CONTROL VALVE 3 SPOOL OUTSIDE DOZER .....	3262-24		
CONNECTORS AND FITTINGS CONTROL VALVE 3 SPOOL PAT DOZER .....	3262-28		
CONNECTORS AND FITTINGS CONTROL VALVE 4 SPOOL PAT DOZER .....	3262-32		
CONTROL LEVER (JOYSTICK) INTEGRATED GRADE & PILOT ENABLE SWITCH .....	3262-34		
CONTROL LEVER, HYDRAULIC (PILOT CONTROLS) (ALL HYDRAULIC) .....	3262-14		
CONTROL LEVER, HYDRAULIC (PILOT CONTROLS) (OUTSIDE DOZER) .....	3262-12		
CONTROL LEVER, HYDROSTATIC/TRANSMISSION (CONTINUED) .....	0315-8		

## ALPHABETICAL INDEX - CONTINUED

	PAGE		PAGE
CONVERSION KIT PARTS ALSO ON AIR PRE-CLEANER PAGE(850J), AIR PRE-CLEANER	1911-4	COVER, PILOT CONTROL (OUTSIDE DOZER)	3262-12
CONVERSION KIT, PARTS ALSO ON HOOD AND SOUND ABSORPTION PAGE, PRE-CLEANER	.0522-2	COVER, REAR ACCESS	1741-2
COOLANT HEATER PLUG (HT001)	.0400-22	COVER, REAR WIPER MOTOR	1814-8
COOLANT HEATER, ENGINE	.0505-4	COVER, RECIRCULATION AIR (S/N -XXXXXX)	1810-4
COOLANT HEATER, FUEL FIRED	.0505-6	COVER, RECIRCULATION AIR (S/N -XXXXXX)	1810-6
COOLANT TEMPERATURE SENSOR, ENGINE (850J)	.0578-5	COVER, RECIRCULATION AIR (S/N XXXXXX- )	1810-7A
COOLER /TANK BYPASS VALVE OIL	.0362-2	COVER, RECIRCULATION AIR (S/N XXXXXX- )	1810-7C
COOLER /TANK BYPASS VALVE OIL	.0362-4	COVER, ROCKER ARM (HT001)	0400-7
COOLER AND PLUMBING FOR INTEGRATED GRADE CONTROL HYDRAULIC	.0511-12	COVER, THERMOSTAT (HT001)	0400-20
COOLER, BRACKETS, HYDRAULIC HOSES/FITTINGS AND BYPASS VALVE	.0511-10	COVER, TIMING GEAR W/O AUX. (HT001)	0400-55
COOLER, ENGINE OIL (HT001)	.0400-51	COVER, TRACK CHAIN IDLER, BRACKETS AND	0133-12
COOLER, HYDROSTATIC OIL(850J)	.0511-8	COVER, VALVE (HT001)	0400-7
CORDURA SLEEVE (ALL HYDRAULIC) (850J)	.3263-22	COVER, VANDAL WITH ROPS	1810-2
CORDURA SLEEVE (OUTSIDE DOZER)	.3263-6	CRADLE/POWER TRAIN MOUNTING, ENGINE	0540-2
CORDURA SLEEVE (850J)	.3263-14	CRANKSHAFT GEAR (HT001)	0400-39
C-FRAME, ALL HYDRAULIC	.3263-14	CRANKSHAFT POSITION SENSOR (HT001)	0400-37
CORE CONDENSER, AIR CONDITIONING	1832-2	CRANKSHAFT PULLEY (HT001)	0400-10
CORE, EVAPORATOR (UPPER)	1831-8	CRANKSHAFT THRUST BEARING (HT001)	0400-39
CORE, HEATER (UPPER)	1831-8	CROSSBAR AND COMPONENT PARTS, PINNED	0135-2
CORE, ROPS UNDER SEAT HEATER	1831-2	CROSSBAR FIELD KITS FOR ALL HYDRAULIC DOZERS, PIVOT SHAFT SPACERS	0135-4
COUNTERWEIGHT WITH DOORS, REAR	1749-4	CROSSBAR PIN	0135-2
COUNTERWEIGHT, FRONT	1749-2	CROSSBAR REMOTE LUBE HOSE	0135-2
COUPLER, FLYWHEEL (850J)	.0325-4	CROSSBAR REMOTE LUBE PLATE	0131-2
COUPLER, LOVEJOY (850J)	.0325-4	CUP HOLDER	1810-2
COUPLING, HYDROSTATIC PUMP (850J)	.0355-24	CUP HOLDER (S/N -XXXXXX)	1810-6
COVER BATTERY TERMINAL	1671-2	CUP HOLDER (S/N XXXXXX- )	1810-7C
COVER PLATE - CAB, FUSE (S/N -XXXXXX)	1810-4	CUPPED END BIT, SEMI-U BLADE	3201-6
COVER PLATE - CAB, FUSE (S/N XXXXXX- )	1810-7A	CUPPED END BIT, STRAIGHT BLADE	3201-8
COVER PLATE WELDMENT-LIGHT BAR(RIGHT AND LEFT SIDE)	1673-4	CUPPED END BITS FOR ALL HYDRAULIC(PAT) BLADES	3201-4
COVER PLATE WITH TUBE, HYDRAULIC RESERVOIR	.2164-2	CUTTING EDGE, BLADE	3201-2
COVER PLATE, AUXILIARY PILOT CONTROL (ALL HYDRAULIC)	.3262-14	CUTTING EDGE, BLADE	3201-4
COVER PLATE, AUXILIARY PILOT CONTROL (OUTSIDE DOZER)	.3262-12	CUTTING EDGE, SEMI-U BLADE	3201-6
COVER PLATE, FUSE	1810-2	CUTTING EDGE, STRAIGHT BLADE	3201-8
COVER PLATE, HYDROSTATIC RESERVOIR ACCESS	.0364-4	CYLINDER AND COMPONENT PARTS, LIFT (OUTSIDE DOZER)	3265-4
COVER PLATE, REAR HYDRAULIC	.1927-2	CYLINDER AND COMPONENT PARTS, TILT (OUTSIDE DOZER)(850J)	3265-12
COVER PLATE, TRACK FRAME	.0131-2	CYLINDER AND COMPONENTS, RIPPER	4201-4
COVER, CAB DOOR LATCH	.1813-2	CYLINDER BLOCK (HT001) (PAGE 1)	0400-37
COVER, CARRIER ROLLER	.0133-16	CYLINDER BLOCK, HYDROSTATIC MOTOR (850J)	0355-36
COVER, ENGINE ACCESS (850J)	.1912-4	CYLINDER BLOCK, HYDROSTATIC PUMP (850J)	0355-32
COVER, ENGINE ACCESS (850J) WASTE HANDLER	.1912-6	CYLINDER COMPLETE AND COMPONENT PARTS, BLADE TILT (ALL HYDRAULIC)	3265-16
COVER, FLY WHEEL	.0540-2	CYLINDER COMPLETE, ANGLE HYDRAULIC (ALL HYDRAULIC)	3265-14
COVER, HEATER TOP (UPPER)	.1831-8	CYLINDER COMPLETE, LIFT (OUTSIDE DOZER) (850J)	3265-6
COVER, HORN SWITCH (CONTINUED)	.0315-8	CYLINDER COMPLETE, LIFT HYDRAULIC (ALL HYDRAULIC)	3265-14
COVER, HYDROSTATIC RESERVOIR	.0364-4	CYLINDER COMPLETE, TILT HYDRAULIC (ALL HYDRAULIC)	3265-14
COVER, HYDROSTATIC TRACK DRIVE MOTOR END CAP (850J)	.0355-38	CYLINDER GUARD (ALL HYDRAULIC)	3265-14
COVER, OIL ACCESS	.1741-2	CYLINDER HEAD (HT001)	0400-47
COVER, PILOT CONTROL (ALL HYDRAULIC)	.3262-14	CYLINDER HEAD BOLTS SERVICE KIT (HT001)	0400-66
		CYLINDER HEAD GASKET (HT001)	0400-47
		CYLINDER HEAD GASKET KIT (HT001)	0400-69

## ALPHABETICAL INDEX - CONTINUED

PAGE	PAGE
CYLINDER LINER O-RING KIT (HT001) .....	0400-41
CYLINDER LINER PACKING SERVICE KIT (HT001) .....	0400-67
CYLINDER LINER PACKING SERVICE KIT (9902 .....	0400-74
CYLINDER LOCK, CAM (S/N -XXXXXX) .....	1810-6
CYLINDER LOCK, CAM (S/N XXXXXX- ) .....	1810-7C
CYLINDER WITH OUTSIDE DOZER, TILT .....	3265-8
CYLINDER, ANGLE GUARD .....	3265-24
CYLINDER, COLD WEATHER/ETHER STARTING AID FLUID .....	0505-2
CYLINDER, HYDRAULIC TILT CYLINDER HOSES (WITH OUTSIDE DOZER) .....	3265-8
CYLINDER, INSIDE ALL HYDRAULIC PLUMBING (850J) LIFT .....	3263-18
CYLINDER, REAR STORAGE COMPARTMENT (TOOL BOX) .....	2005-2
CYLINDER, ROPS/CAB TILT .....	1810-16
CYLINDER, ROPS/CAB TILT .....	1810-18
CYLINDER, BLADE ANGLE (ALL HYDRAULIC) .....	3265-18
CYLINDER, LIFT AND COMPONENT PARTS (ALL HYDRAULIC)(850J) .....	3265-22
<b>D</b>	
DAMPENER, TORSIONAL (HT001) .....	0400-10
DASH AND MONITOR .....	1676-8
DASH PANEL, LOWER .....	1810-2
DASH PANEL, LOWER (S/N -XXXXXX) .....	1810-6
DASH PANEL, LOWER (S/N XXXXXX- ) .....	1810-7C
DECAL (LABEL) 12 VOLT .....	2006-2
DECAL/LABEL, BIG BLACK AND WHITE LEAPING DEERE DECAL ON SIDE OF DOORS .....	1322-2
DECAL/LABEL, SMALL LEAPING DEERE DECAL CENTERED ABOVE GRILL ON FRONT OF MACH .....	1322-2
DECAL, AIR CLEANER .....	1322-2
DECAL, HEATER AND FAN CONTROL (S/N -XXXXXX) .....	1810-4
DECAL, HEATER AND FAN CONTROL (S/N -XXXXXX) .....	1810-6
DECAL, HEATER AND FAN CONTROL (S/N XXXXXX- ) .....	1810-7A
DECAL, HEATER AND FAN CONTROL (S/N XXXXXX- ) .....	1810-7C
DECALS (FRENCH) .....	1322-6
DECALS (SPANISH) .....	1322-4
DECALS AND LABELS (ENGLISH) .....	1322-2
DECELERATOR/BRAKE PEDAL .....	0515-4
DECELERATOR/BRAKE SENSOR, ROTARY .....	0515-4
DECELERATOR/BRAKE SHAFT .....	0515-4
DECELERATOR/BRAKE SUPPORT .....	0515-4
DECORATIVE GREY CIRCLE LABEL .....	1810-2
DEFROST LOUVERS (S/N -XXXXXX) .....	1810-4
DEFROST LOUVERS (S/N -XXXXXX) .....	1810-6
DEFROST LOUVERS (S/N XXXXXX- ) .....	1810-7A
DEFROST LOUVERS (S/N XXXXXX- ) .....	1810-7C
DESIGNATION LABEL, HYDRAULIC AND HYDROSTATIC OIL TANK 10W30 .....	1322-2
DIAGNOSTIC HOSES AND LABEL, HYDRAULIC VALVE .....	2163-12
DIAGNOSTIC PLUMBING, HYDROSTATIC/ TRANSMISSION .....	0363-4
DIAGNOSTIC PLUMBING, HYDROSTATIC/ TRANSMISSION PRESSURE SENSOR WITH .....	0363-4
DIAGNOSTIC RECEPTACLE, HYDROSTATIC CONTROL VALVE .....	0362-2
DIAGNOSTIC RECEPTACLE, HYDROSTATIC CONTROL VALVE .....	0362-4
DIAGNOSTIC RECEPTACLE, PILOT CONTROLS (ALL HYDRAULIC) .....	3262-14
DIAGNOSTIC RECEPTACLE, PILOT CONTROLS (OUTSIDE DOZER) .....	3262-12
DIPSTICK, OIL (HT001) .....	0400-33
DISCONNECT BATTERY SWITCH .....	1671-2
DISCONNECT LABEL, BATTERY .....	1671-2
DISPLACEMENT CONTROL LINKAGE, ELECTRONIC HYDROSTATIC DISPLACEMENT CONTROL VALVE .....	0355-34
DISPLACEMENT CONTROL VALVE, ELECTRONIC (850J) .....	0355-40
DISPLACEMENT CONTROL VALVE, HYDROSTATIC PUMP VALVE (850J) .....	0355-34
DOME LIGHT AND BULB (S/N -XXXXXX) .....	1810-6
DOME LIGHT AND BULB (S/N XXXXXX- ) .....	1810-7C
DOOR BUMPER .....	1813-4
DOOR FRAME AND GLASS, CAB .....	1813-2
DOOR HOLD OPEN, CAB .....	1813-4
DOOR LATCH COVER, CAB .....	1813-2
DOOR LATCH LEVER .....	1813-2
DOOR LATCH, CAB .....	1813-2
DOOR OUTER HANDLE .....	1813-2
DOOR, GLOVE BOX (S/N -XXXXXX) .....	1810-6
DOOR, GLOVE BOX (S/N XXXXXX- ) .....	1810-7C
DOOR, GLOVE BOX AND PANEL SEAL .....	1810-2
DOOR, HOLD OPEN LATCH CAB .....	1813-4
DOOR, HOOD SERVICE (850J) .....	1911-4
DOOR, HYDRAULIC RESERVOIR .....	2164-2
DOOR, HYDROSTATIC RESERVOIR .....	0364-4
DOORS, CAB AND LATCHES .....	1813-2
DOUBLE/SINGLE FLANGED TRACK ROLLER AND COMPONENT PARTS (850J) .....	0133-4
DOZER BLADE TILT CYLINDER, GUARDS AND HOSES WITH OUTSIDE DOZER .....	3265-8
DRAIN COCK RADIATOR(850J) .....	0511-8
DRAIN HOSE, ENVIRONMENTAL HYDROSTATIC/ HYDRAULIC TANK/RESERVOIR .....	2163-10
DRAIN PAN FOAM, UPPER HEATER .....	1831-8
DRAIN VALVE CAB HEATER PLUMBING .....	1831-6
DRAIN VALVE, HYDRAULIC, HYDROSTATIC TANK /RESERVOIR AND FUEL TANK .....	2163-10
DRAWBAR (RETRIEVAL HITCH) .....	1511-4
DRAWBAR PIN (EXTENDED DRAWBAR) .....	1511-2
DRAWBAR, EXTENDED .....	1511-2
DRIVE MOTORS, HYDROSTATIC TRACK (850J) .....	0355-21A
DRIVE SHAFT SEALS, HYDROSTATIC PUMP (850J) .....	0355-26
DRIVE SHAFT, UNIVERSAL FINAL .....	0201-2
DRIVE SHAFT, UNIVERSAL FINAL (CONTINUED) .....	0201-4
DRIVE SHAFT, UNIVERSAL FINAL (CONTINUED) .....	0201-6



## ALPHABETICAL INDEX - CONTINUED

	PAGE		PAGE
DRIVE SPROCKET GUARD, TRACK.....	0131-6	ENGINE SIDE SHIELD (850J)	
DRIVE SPROCKET, TRACK CHAIN.....	0132-16	WASTE HANDLER.....	1912-6
DRIVE SPROCKET, TRACK CHAIN 850J		ENGINE SIDE SHIELD BAFFLES (850J).....	1912-4
RECESSED WITH WASTE HANDLER.....	0132-16	ENGINE SIDE SHIELDS	
DRIVES SEAL GUARDS, FINAL.....	0242-2	(850J)WASTE HANDLER.....	1912-6
DRIVES, FINAL.....	0201-2	ENGINE SIDE SHIELDS AND SOUND ABSORPTION	
DRIVES, FINAL (CONTINUED).....	0201-4	MATERIAL (850J).....	1912-4
DRIVES, FINAL (CONTINUED).....	0201-6	ENGINE SPEED LABEL	
DUCTWORK FOAM, AIR.....	1810-4	(S/N -XXXXXX).....	1810-4
DUCTWORK FOAM, AIR		ENGINE SPEED LABEL	
(S/N XXXXXX- ).....	1810-7A	(S/N XXXXXX- ).....	1810-7A
DUST COVER, PILOT CONTROL		ENGINE SPEED POTENTIOMETER SWITCH.....	1676-8
(ALL HYDRAULIC).....	3262-14	ENGINE SPEED-REVERSE LABEL	
DUST COVER, PILOT CONTROL		(S/N -XXXXXX).....	1810-4
(OUTSIDE DOZER).....	3262-12	ENGINE SPEED-REVERSE LABEL	
DUST UNLOADER VALVE(850J), AIR CLEANER.....	0521-8	(S/N XXXXXX- ).....	1810-7A
 <b>E</b> 			
ECU.....	0575-2	ENGINE WIRING HARNESS (850J).....	1674-12
EDGE GUARD MOLDING (OUTSIDE DOZER).....	3263-6	ENVIRONMENTAL FUEL TANK, HYDROSTATIC,	
EDGE GUARD MOLDING (OUTSIDE DOZER).....	3263-22	HYDRAULIC TANK/RESERVOIR DRAIN VALVE.....	2163-10
EDGE, BLADE CUTTING.....	3201-2	ENVIRONMENTAL HYDROSTATIC, HYDRAULIC	
EDGE, BLADE CUTTING.....	3201-4	TANK/RESERVOIR DRAIN HOSE.....	2163-10
EGR (HT001).....	0400-61	ETHER/COLD WEATHERSTART AID SWITCH.....	0505-2
EGR SERVICE KIT (OPTION CODE 9902).....	0400-81	EVAPORATOR CORE (UPPER).....	1831-8
EGR VALVE GASKET SERVICE KIT (9902).....	0400-80	EXCHANGER, HEAT (HT001).....	0400-61
EJECTOR, AIR PRE-CLEANER ROTARY.....	0522-2	EXHAUST GAS RECIRCULATION (HT001).....	0400-61
ELECTRICAL CENTER COVER PLATE, VEHICLE.....	1674-8	EXHAUST MANIFOLD (HT001).....	0400-23
ELECTRICAL CENTER RELAYS, VEHICLE.....	1674-8	EXHAUST MUFFLER AND EXHAUST STACK(850J).....	0531-6
ELECTRICAL CENTER, VEHICLE.....	1674-8	EXHAUST STACK (BLACK) AND MUFFLER	
ELECTRICAL RESISTOR, CAB HEATER		(850J).....	0531-6
(UPPER).....	1831-8	EXHAUST STACK (CHROME) AND MUFFLER	
ELECTRONIC DISPLACEMENT CONTROL LINKAGE,		(850J).....	0531-6
HYDROSTATIC DISPLACEMENT CONTROL VALVE.....	0355-34	EXHAUST VALVE (HT001).....	0400-47
ELECTRONIC DISPLACEMENT CONTROL VALVE		EXHAUST VALVE KIT (HT001).....	0400-69
(850J).....	0355-40	EXTENDED DRAWBAR.....	1511-2
ELECTRONIC/HYDRAULIC CONTROL UNIT.....	0511-10	 <b>F</b> 	
ELEMENT(850J), AIR CLEANER PRIMARY.....	0521-8	FAN AIR CONDITIONING CONDENSER.....	1832-2
ELEMENT(850J), AIR CLEANER SECONDARY.....	0521-8	FAN AND SUPPORT, ENGINE.....	0512-2
END BIT SEMI-U.....	3201-6	FAN CONTROL AND HEATER DECAL	
END BIT, BLADE.....	3201-4	(S/N -XXXXXX).....	1810-4
END BIT, SEMI-U BLADE CUPPED.....	3201-6	FAN CONTROL AND HEATER DECAL	
END BIT, STRAIGHT BLADE CUPPED.....	3201-8	(S/N -XXXXXX).....	1810-6
END BITS FOR ALL HYDRAULIC(PAT)BLADES,		FAN CONTROL AND HEATER DECAL	
CUPPED.....	3201-4	(S/N XXXXXX- ).....	1810-7A
END BITS, STRAIGHT BLADE.....	3201-8	FAN CONTROL AND HEATER DECAL	
END CAP, HYDROSTATIC TRACK DRIVE MOTOR		(S/N XXXXXX- ).....	1810-7C
(850J).....	0355-38	FAN DRIVE MOTOR FOR HYDRAULIC FAN	
END CAP, HYDROSTATIC PUMP		(REVERSING FIELD KIT).....	2167-10
(850J).....	0355-28	FAN DRIVE MOTOR FOR HYDRAULIC FAN (850J)	
ENGINE.....	0400-2	(NON-REVERSING).....	2167-8
ENGINE		FAN DRIVE MOTOR FOR HYDRAULIC FAN (850J)	
SIDE SHIELDS(850J)WASTE HANDLER.....	1912-6	(REVERSING).....	2167-4
ENGINE ACCESS COVER (850J).....	1912-4	FAN DRIVE PUMP AND PLUMBING (850J),	
ENGINE ACCESS COVER (850J)		HYDRAULIC.....	2161-8
WASTE HANDLER.....	1912-6	FAN DRIVE SUPPORT.....	0512-2
ENGINE CONTROL UNIT.....	0575-2	FAN HUB, ENGINE.....	0512-2
ENGINE COOLANT HEATER.....	0505-4	FAN SHROUD, RADIATOR(850J).....	0511-8
ENGINE CRADLE/POWER TRAIN MOUNTING.....	0540-2	FAN SUPPORT, ENGINE.....	0512-2
ENGINE FAN AND SUPPORT.....	0512-2	FAN SWITCH, REVERSING (TOP LEFT SIDE IN	
ENGINE HARNESS RELAY (850J)		DASH).....	1674-14
(START RELAY (100 AMP) 24 VOLT).....	1674-12	FAN WARNING LABEL.....	1322-2
ENGINE OIL BY-PASS VALVE (HT001).....	0400-37	FAN, HEATER BLOWER (UPPER).....	1831-8
ENGINE OIL FILTER HEAD (HT001).....	0400-51	FAN, SHIELD RADIATOR(850J).....	0511-8
ENGINE OIL PRESSURE SENSOR.....	1674-26	FAST FUEL INLET VALVE.....	0564-4
		FAST FUEL RECEIVER.....	0564-4

## ALPHABETICAL INDEX - CONTINUED

	PAGE		PAGE
FAST FUEL SHUT-OFF FLOAT .....	0564-4	FINAL DRIVES (CONTINUED).....	0201-4
FAST FUEL TANK ADAPTER PLATE .....	0564-4	FINAL DRIVES (CONTINUED).....	0201-6
FAST FUELING SYSTEM.....	0564-4	FINAL DRIVES BRAKE .....	0201-2
FEEDBACK SPRING, HYDROSTATIC TRACK		FINAL DRIVES BRAKE	
DRIVE MOTOR (850J).....	0355-38	(CONTINUED).....	0201-4
FENDERS.....	1927-2	FINAL DRIVES BRAKE	
FIELD KIT, AIR CONDITIONER .....	1832-2	(CONTINUED).....	0201-6
FILLER PLUG, HYDRAULIC RESERVOIR.....	2164-2	FITTINGS (AIR SUSPENSION).....	1821-28
FILTER BRACKET FOR HYDRAULIC FAN DRIVE,		FITTINGS AND CONNECTORS CONTROL VALVE,	
HYDRAULIC.....	2164-6	2 SPOOL OUTSIDE DOZER.....	3262-20
FILTER BRACKET, HYDRAULIC.....	2164-4	FITTINGS AND CONNECTORS CONTROL VALVE,	
FILTER BYPASS VALVE, HYDROSTATIC CHARGE.....	0362-2	3 SPOOL OUTSIDE DOZER.....	3262-24
FILTER BYPASS VALVE, HYDROSTATIC CHARGE.....	0362-4	FITTINGS AND CONNECTORS CONTROL VALVE,	
FILTER COVER PLATE		3 SPOOL PAT DOZER .....	3262-28
(S/N -XXXXXX).....	1810-4	FITTINGS AND CONNECTORS CONTROL VALVE,	
FILTER COVER PLATE		4 SPOOL PAT DOZER .....	3262-32
(S/N -XXXXXX).....	1810-6	FITTINGS, HOSE, LIFT CYLINDER ALL	
FILTER COVER PLATE		HYDRAULIC INSIDE PUSH BEAM(850J).....	3263-18
(S/N XXXXXX- ) .....	1810-7A	FITTINGS, PILOT CONTROLS SNAP TO CONNECT	
FILTER COVER PLATE		(ALL HYDRAULIC).....	3262-14
(S/N XXXXXX- ) .....	1810-7C	FITTINGS, PILOT CONTROLS SNAP TO CONNECT	
FILTER ELEMENT, HYDROSTATIC CONTROL		(OUTSIDE DOZER).....	3262-12
VALVE .....	0362-2	FLANGED AXLE SHAFT SEAL .....	0201-2
FILTER ELEMENT, HYDROSTATIC CONTROL		FLANGED AXLE SHAFT SEAL	
VALVE .....	0362-4	(CONTINUED).....	0201-4
FILTER FOR HYDRAULIC FAN DRIVE,		FLANGED AXLE SHAFT SEAL	
HYDRAULIC.....	2164-6	(CONTINUED).....	0201-6
FILTER HEAD FOR HYDRAULIC FAN DRIVE,		FLOOR MAT.....	1810-10
HYDRAULIC.....	2164-6	FLY WHEEL COVER.....	0540-2
FILTER HEAD, ENGINE OIL (HT001).....	0400-51	FLYWHEEL (HT001) .....	0400-12
FILTER HEAD, HYDRAULIC.....	2164-4	FLYWHEEL COUPLER	
FILTER HOSE TO CONTROL VALVE(ALSO WITH		(850J).....	0325-4
WINCH) HYDRAULIC .....	2164-4	FLYWHEEL HOUSING (HT001) .....	0400-11
FILTER HOSES, HYDROSTATIC & HYDROSTATIC/		FOAM, AIR DUCTWORK.....	1810-4
TRANSMISSION CONTROL .....	0363-16	FOAM, AIR DUCTWORK	
FILTER KIT, FUEL (HT001) .....	0400-64	(S/N XXXXXX- ).....	1810-7A
FILTER, CAB FRESH AIR		FOAM, UPPER HEATER DRAIN PAN .....	1831-8
(UPPER).....	1831-8	FOLLOWER, CAM (HT001).....	0400-68
FILTER, HYDRAULIC .....	2164-4	FOOT REST PLATE.....	1810-2
FILTER, OIL (HT001).....	0400-51	FOOTREST PLATE	
FILTER, FUEL (HT001).....	0400-29	(S/N -XXXXXX).....	1810-6
FILTRATION MANIFOLD HYDROSTATIC PUMP		FOOTREST PLATE	
(850J).....	0355-24	(S/N XXXXXX- ).....	1810-7C
FINAL DRIVE BRAKE PISTON .....	0201-2	FORWARD GUARD .....	1741-2
FINAL DRIVE BRAKE PISTON		FORWARD, NEUTRAL, REVERSE LABEL .....	0315-6
(CONTINUED).....	0201-4	FORWARD, NEUTRAL, REVERSE LABEL	
FINAL DRIVE BRAKE PISTON		(CONTINUED).....	0315-8
(CONTINUED).....	0201-6	FRAME COVER PLATE, TRACK.....	0131-2
FINAL DRIVE INNER HOUSING .....	0201-2	FRAME(850J), RIPPER TOOL CARRIER .....	4201-8
FINAL DRIVE INNER HOUSING		FRAME, MAIN CONVENIENCE ASSEMBLY .....	1741-2
(CONTINUED).....	0201-4	FRAME, CAB DOOR AND GLASS .....	1813-2
FINAL DRIVE INNER HOUSING		FRAME, TRACK.....	0131-2
(CONTINUED).....	0201-6	FRENCH LABEL AND DECAL KIT .....	1322-6
FINAL DRIVE INPUT GEAR .....	0201-2	FRENCH LABELS AND DECALS.....	1322-6
FINAL DRIVE INPUT GEAR		FRESH AIR FILTER, CAB	
(CONTINUED).....	0201-4	(UPPER).....	1831-8
FINAL DRIVE INPUT GEAR		FRONT COUNTERWEIGHT .....	1749-2
(CONTINUED).....	0201-6	FRONT HYDROSTATIC PUMP (850J) .....	0355-22
FINAL DRIVE OUTER HOUSING .....	0201-2	FRONT PLATE (HT001).....	0400-55
FINAL DRIVE OUTER HOUSING		FRONT ROPS HEADLINER .....	1810-2
(CONTINUED).....	0201-4	FRONT WINDOW GLASS .....	1814-2
FINAL DRIVE OUTER HOUSING		FRONT WORK LAMP PLATE .....	1673-4
(CONTINUED).....	0201-6	FUEL AND WATER SEPARATOR (HT001).....	0400-29
FINAL DRIVE SEAL GUARDS .....	0242-2	FUEL FILTER (HT001).....	0400-29
FINAL DRIVE SPACERS, PIVOT SHAFT SPACERS		FUEL FILTER ELEMENT SERVICE KIT (HT001).....	0400-64
AND LONGER CROSSBAR FIELD KITS FOR PAT.....	0135-4	FUEL FILTER ELEMENT SERVICE KIT (9902) .....	0400-71
FINAL DRIVES .....	0201-2	FUEL FILTER GASKET KIT (HT001).....	0400-29

## ALPHABETICAL INDEX - CONTINUED

	PAGE		PAGE
FUEL FILTER KIT (HT001) .....	0400-29	GRADE CONTROL LEVER (JOYSTICK)	
FUEL FIRED COOLANT HEATER KIT .....	0505-6	INTEGRATED/PILOT ENABLE SWITCH .....	3262-34
FUEL INJECTION LINES (HT001) .....	0400-13	GRADE CONTROL VALVE LOAD SENSE PLUMBING	
FUEL INJECTOR (HT001) .....	0400-13	INTEGRATED .....	2163-16
FUEL LINE SHUT OFF VALVE		GRADE CONTROL VEHICLE HARNESS FUSES,	
(850J) .....	0563-4	INTERGRATED .....	1674-28
FUEL LINES (850J) .....	0563-4	GRADE CONTROL VEHICLE HARNESS,	
FUEL SENDER WIRING HARNESS .....	1674-4	INTEGRATED .....	1674-28
FUEL TANK .....	0564-2	GRADE CONTROL VEHICLE HARNESS, MICRO 24	
FUEL TANK FAST FUEL INLET .....	0564-4	VOLT RELAY, INTERGRATED .....	1674-28
FUEL TANK FILLER CUP .....	0564-2	GRILLE HOSE GUARD .....	1921-2
FUEL TANK, FAST FUEL RECEIVER .....	0564-4	GRILLE HOUSING, STANDARD .....	1921-2
FUEL TANK, FUEL SENDER .....	0564-2	GRILLE MOUNTED WORK LIGHTS .....	1673-4
FUEL TANK, HYDROSTATIC, HYDRAULIC TANK/ RESERVOIR DRAIN VALVE .....	2163-10	GRILLE WIRING HARNESS (850J) .....	1674-12
FUEL TEMPERATURE SENSOR (HT001) .....	0400-13	GRILLE, HEAVY DUTY .....	1921-4
FUSE COVER PLATE .....	1810-2	GRILLE, STANDARD .....	1921-2
FUSE COVER PLATE - CAB		GRIP CONTROLLER HANDLE SINGLE LEVER	
(S/N -XXXXXX) .....	1810-4	CONTROL .....	0315-6
FUSE COVER PLATE - CAB		GRIP CONTROLLER HANDLE SINGLE LEVER	
(S/N XXXXXX- ) .....	1810-7A	CONTROL (CONTINUED) .....	0315-8
FUSEBLOCK LABEL, CAB		GROUND SPEED LABEL .....	0315-6
(S/N -XXXXXX) .....	1810-6	GROUND SPEED LABEL	
FUSEBLOCK LABEL, CAB		(CONTINUED) .....	0315-8
(S/N XXXXXX- ) .....	1810-7C	GROUND STARTER STRAP .....	1671-2
FUSES, INTERGRATED GRADE CONTROL VEHICLE HARNESS .....	1674-28	GROUND STRAP, BATTERY .....	1671-2
		GROUND STRAP, STARTER .....	1674-4
		GROUND STRAP, STARTER (CAB/ROPS HARNESS) .....	1674-6
		GUARD ANGLE CYLINDER .....	3265-24
		GUARD REAR .....	1741-2
		GUARD, AIR CONDITIONING PLUMBING	
		(S/N -XXXXXX) .....	1810-4
		GUARD, AIR CONDITIONING PLUMBING	
		(S/N -XXXXXX) .....	1810-6
		GUARD, AIR CONDITIONING PLUMBING	
		(S/N XXXXXX- ) .....	1810-7A
		GUARD, AIR CONDITIONING PLUMBING	
		(S/N XXXXXX- ) .....	1810-7C
		GUARD, CENTER .....	1741-2
		GUARD, CYLINDER (ALL HYDRAULIC) .....	3265-14
		GUARD, FORWARD .....	1741-2
		GUARD, HEAVY DUTY HOSE .....	1921-4
		GUARD, TRACK DRIVE SPROCKET .....	0131-6
		GUARDS AND HOSES, DOZER BLADE TILT	
		CYLINDER (WITH OUTSIDE DOZER) .....	3265-8
		GUARDS, FINAL DRIVE SEAL .....	0242-2
		GUARDS, ROCK LONG TRACK, LOW GROUND P,	
		STANDARD, WIDE TRACK AND LT,WIDE TRACK .....	0131-10
		GUIDE, CENTER ROLLER(LOW GROUND PRESSURE	
		, LONG TRACK & LONG TRACK, WIDE TRACK) .....	0131-10
		GUIDE, TRACK CHAIN IDLER .....	0133-12
		GUIDES, CENTER TRACK CHAIN(ON 8 ROLLER	
		MACHINES ONLY) .....	0131-12
		GUIDES, CHAIN .....	0131-6
		<b>H</b>	
		HAND PUMP FOR CAB TILT .....	0362-2
		HAND PUMP FOR CAB TILT .....	0362-4
		HAND PUMP RELIEF VALVE .....	0362-2
		HAND PUMP RELIEF VALVE .....	0362-4
		HANDLE GRIP, CAB DOOR HOLD OPEN .....	1813-4
		HANDLE/LEVER, AUXILIARY PILOT	
		CONTROLLER(WINCH) .....	3262-6
		HANDLE, DOOR OUTER .....	1813-2
		HARDWARE KIT, A/C COMPRESSOR .....	1832-10

# 000I-18

850J TIER III CRAWLER DOZER (S.N. 130886- )

## ALPHABETICAL INDEX - CONTINUED

PAGE	PAGE
HARNES (AIR SUSPENSION) COMPRESSOR SEAT WIRING .....1821-26	HEATER AND AIR CONDITIONER BLOWER SWITCH (UPPER)..... 1831-8
HARNES (AIR SUSPENSION), SEAT POWER .....1821-26	HEATER AND AIR CONDITIONER TEMPERATURE SWITCH ..... 1832-2
HARNES AIR CONDITIONING CONDENSER WIRING .....1832-2	HEATER AND AIR CONDITIONER TEMPERATURE SWITCH (UPPER)..... 1831-8
HARNES FROM ENGINE HARNES TO STARTER, START TERMINAL JUMPER (850J).....1674-12	HEATER AND AIR CONDITIONER TEMPERATURE SWITCH (S/N -XXXXXX) ..... 1810-6
HARNES FUSES INTERGRATED GRADE CONTROL VEHICLE .....1674-28	HEATER AND AIR CONDITIONER TEMPERATURE SWITCH (S/N XXXXXX- ) .....1810-7C
HARNES MICRO 24 VOLT RELAY, INTERGRATED GRADE CONTROL VEHICLE .....1674-28	HEATER AND FAN CONTROL DECAL (S/N -XXXXXX)..... 1810-4
HARNES WITH INTEGRATED GRADE CONTROL AND BRACKET, CAB .....1674-16	HEATER AND FAN CONTROL DECAL (S/N -XXXXXX)..... 1810-6
HARNES, ALTERNATOR HARNES(80 AMP) (850J) .....1672-8	HEATER AND FAN CONTROL DECAL (S/N XXXXXX- )..... 1810-7A
HARNES, CAB FIELD OR OPTIONAL WORK LIGHT .....1673-6	HEATER AND FAN CONTROL DECAL (S/N XXXXXX- ) .....1810-7C
HARNES, CAB HEATER WIRING (UPPER).....1831-8	HEATER BRACKET MOTOR ATTACHING, ROPS UNDER SEAT ..... 1831-2
HARNES, CAB/ROPS .....1674-6	HEATER CORE (UPPER) ..... 1831-8
HARNES, CAB/ROPS ROOF .....1674-6	HEATER CORE ROPS UNDER SEAT ..... 1831-2
HARNES, ENGINE WIRING (850J) .....1674-12	HEATER DRAIN PAN FOAM, UPPER ..... 1831-8
HARNES, FUEL SENDER WIRING .....1674-4	HEATER HOSE, CAB ..... 1831-6
HARNES, GRILLE WIRING (850J) .....1674-12	HEATER ON/OFF SWITCH (UPPER)..... 1831-8
HARNES, INTEGRATED GRADE CONTROL VEHICLE .....1674-28	HEATER PLUMBING, CAB ..... 1831-6
HARNES, OPTIONAL 24/12 VOLT POWER WIRING .....2006-2	HEATER PLUMBING, ROPS SEAT BASE ..... 1831-4
HARNES, POWER PLUG 24/12 VOLT ACCESSORY .....2006-2	HEATER RESISTOR, ROPS UNDER SEAT ..... 1831-2
HARNES, RADIO WIRING .....2001-2	HEATER SWITCH ROPS UNDER SEAT HEATER ..... 1831-2
HARNES, REAR WIPER MOTOR WIRING .....1814-8	HEATER TOP COVER (UPPER) ..... 1831-8
HARNES, ROPS WORK LIGHT .....1673-8	HEATER TRAY FOR ROPS UNDER SEAT ..... 1831-2
HARNES, STANDARD CAB LIGHTS WIRING HARNES .....1673-2	HEATER WATER VALVE RESISTOR ..... 1831-8
HARNES, STANDARD CAB WORK LIGHT .....1673-2	HEATER WIRING HARNES, ROPS UNDER SEAT ..... 1831-2
HARNES, TRANSMISSION .....1674-4	HEATER, BLOWER FAN (UPPER) ..... 1831-8
HARNES, UNDER SEAT ROPS HEATER WIRING .....1831-2	HEATER, CAB (UPPER)..... 1831-8
HARNES, WIRING (HT001) .....0400-59	HEATER, COOLANT PLUG (HT001)..... 0400-22
HARNES, WITH SWITCH AND COVER SINGLE LEVER CONTROL WITH SPEEDIN GRIP .....0315-6	HEATER, COOLANT, FUEL FIRED ..... 0505-6
HARNES, WORK LIGHT WIRING .....1673-4	HEATER, ENGINE COOLANT ..... 0505-4
HEAD END PIN, ANGLE CYLINDER .....3243-2	HEATER, ROPS UNDER SEAT ..... 1831-2
HEAD END PIN, LIFT CYLINDER (ALL HYDRAULIC) .....3265-14	HEATER, THERMAL EXPANSION VALVE, CAB (UPPER)..... 1831-8
HEAD FOR HYDRAULIC FAN DRIVE, HYDRAULIC FILTER .....2164-6	HEATER, UPPER ..... 1831-8
HEAD GASKET (HT001) .....0400-47	HEAVY DUTY GRILLE..... 1921-4
HEAD, HYDRAULIC FILTER .....2164-4	HEAVY DUTY HOSE GUARD ..... 1921-4
HEADLINER, CAB FRONT (WITH LOUVERS) (S/N -XXXXXX) .....1810-4	HIGH AND LOW PRESSURE AIR CONDITIONING SWITCH ..... 1832-2
HEADLINER, CAB FRONT (WITH LOUVERS) (S/N XXXXXX- ) .....1810-7A	HIGH PRESSURE TRANSMISSION/HYDROSTATIC HOSES(850J LOW GROUND PRESSURE)..... 0363-20
HEADLINER, REAR (WITH LOUVERS) (S/N -XXXXXX) .....1810-6	HIGH PRESSURE TRANSMISSION/HYDROSTATIC HOSES(850J PAT-LT AND PAT-LT-WT)..... 0363-22
HEADLINER, REAR (WITH LOUVERS) (S/N XXXXXX- ) .....1810-7C	HIGH PRESSURE TRANSMISSION/HYDROSTATIC HOSES(850J STANDARD AND WIDE TRACK) ..... 0363-18
HEADLINER, REAR ROPS .....1810-2	HINGE, HYDROSTATIC RESERVOIR DOOR ..... 0364-4
HEADLINER, ROPS .....1810-2	HINGE, REAR STORAGE COMPARTMENT (TOOLBOX) ..... 2005-2
HEADREST(DELUXE) .....1821-12	HITCH PIN (RETRIEVAL HITCH) ..... 1511-4
HEAT EXCHANGER (HT001) .....0400-61	HITCH PIN, QUICK LOCK (RETRIEVAL HITCH) ..... 1511-4
HEATER AND AIR CONDITIONER BLOWER SWITCH .....1832-2	HITCH, EXTENDED ..... 1511-2
HEATER AND AIR CONDITIONER BLOWER SWITCH (S/N -XXXXXX) .....1810-6	HOLD OPEN LATCH, CAB DOOR ..... 1813-4
HEATER AND AIR CONDITIONER BLOWER SWITCH (S/N XXXXXX- ) .....1810-7C	HOLD OPEN, CAB DOOR ..... 1813-4
	HOLDER, CUP (S/N -XXXXXX)..... 1810-6
	HOLDER, CUP (S/N XXXXXX- )..... 1810-7C
	HOLDER, OPERATOR MANUAL ..... 1821-4