

755D CRAWLER LOADER



JOHN DEERE

PARTS CATALOG

755D CRAWLER LOADER

PC10011 (Apr-07) English

Worldwide Construction and Forestry Division

Worldwide Edition
Litho in U.S.A. (Revised)
COPYRIGHT © 2007
DEERE & COMPANY
Moline, Illinois
All rights reserved

INTRODUCTION AND CUSTOMER INFORMATION

TX1013412A

-UN-25OCT06



*SIDE VIEW OF JOHN DEERE 755D CRAWLER LOADER
(MANUFACTURED 2007-)*

TO THE CUSTOMER

THE PART NUMBERS IN THIS PARTS CATALOG WERE CORRECT AT THE TIME YOUR CATALOG WAS PUBLISHED. IT IS OUR POLICY TO CONSTANTLY IMPROVE OUR MACHINES AND, THEREFORE, PART NUMBERS MAY CHANGE. WHEN ORDERING PARTS, VERIFY PART NUMBERS THROUGH YOUR DEALER

(SPECIFICATIONS AND DESIGN SUBJECT TO CHANGE WITHOUT NOTICE.)

SERIAL NUMBER LOCATIONS

EACH 755D HAS TWO SERIAL NUMBER PLATES. ONE FOR THE PRODUCT IDENTIFICATION NUMBER AND **ONE FOR THE ENGINE.**

THE PRODUCT IDENTIFICATION PLATE IS LOCATED ON THE L.H. SIDE OF THE FRAME IN FRONT OF THE ENGINE DOOR.

THE ENGINE SERIAL NUMBER IS A TEN DIGIT NUMBER (XXXX XX XXXX) LOCATED ON THE ENGINE INFORMATION PLATE WHICH IS FOUND ON THE INTAKE MANIFOLD.

LEFT SIDE AND RIGHT SIDE, FRONT AND REAR OF THE DOZER ARE VIEWED BY FACING IN THE DIRECTION OF DOZER FORWARD TRAVEL.

WHENEVER SERIAL NUMBERS ARE REQUIRED ON WARRANTY CLAIMS OR CORRESPONDENCE PERTAINING TO THIS PRODUCT, IT IS EXTREMELY IMPORTANT THAT ALL CHARACTERS BE FURNISHED. THIS POINT CANNOT BE OVEREMPHASIZED.

SERIAL NUMBER LISTING INFORMATION

SERIAL NUMBER INFORMATION IS LISTED TO SHOW ON WHICH MACHINES EACH PART CAN BE USED; FOR EXAMPLE:

- THE PART CAN BE USED ON ALL MACHINES.
- 000000- THE PART CAN BE USED ON ALL MACHINES BEGINNING WITH THE SERIAL NUMBER LISTED.
- 000000 THE PART CAN BE USED ON ALL MACHINES UP TO AND INCLUDING THE SERIAL NUMBER LISTED.
- 000000-000000 THE PART CAN BE USED ON ALL MACHINES BETWEEN AND INCLUDING THE SERIAL NUMBERS LISTED.

WHEN XXXXXX'S ARE LISTED IN PLACE OF A SERIAL NUMBER, A SERIAL NUMBER CHANGE WAS MADE BUT THE EXACT SERIAL NUMBER WAS NOT AVAILABLE WHEN THE CATALOG WAS PRODUCED.

BOX-ENCLOSED ILLUSTRATIONS

A KEY NUMBER, SHOWN IN THE PARTS LIST, IS ASSIGNED TO A BOX ENCLOSING ALL PARTS SOLD AS A SERVICE ASSEMBLY.

COMPLETE GOODS LISTINGS

COMPLETE GOODS ARE LISTED IN BOLD FACE TYPE. ORDER SEPARATELY. DO NOT INCLUDE ON REPLACEMENT PARTS ORDER.

SI UNITS OF MEASURE

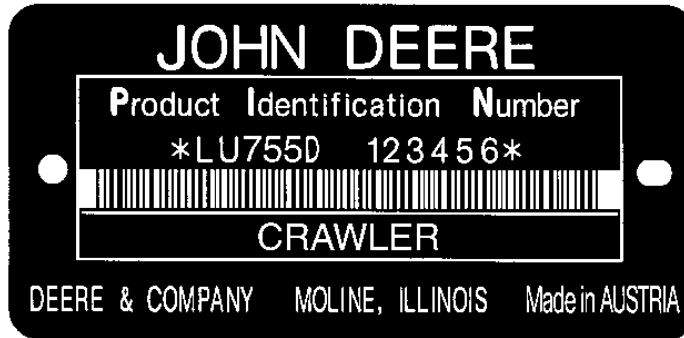
METRIC DIMENSIONS ARE GIVEN, WHERE APPLICABLE, THROUGHOUT THIS PARTS CATALOG.

000I-4

755D CRAWLER LOADER

PRODUCT IDENTIFICATION NUMBER

TX1013356 -UN-20OCT06

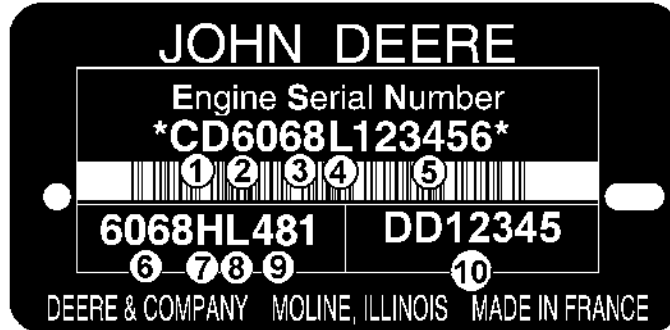


TX1013356

- | | |
|-------------------------------------|----------------|
| 1. DESIGNATES CRAWLER MANUFACTURER | LU - LIEBHERR |
| 2. DESIGNATES CRAWLER MODEL | 755D |
| 3. DESIGNATES CRAWLER CONFIGURATION | D |
| 4. DESIGNATES CRAWLER SERIAL NUMBER | 123456 |
| 5. DESIGNATES UNIT TYPE | CRAWLER LOADER |

ENGINE SERIAL NUMBER PLATE

CDP47468 -UN-02JUN06



ENGINE SERIAL NUMBER IS DEFINED BY 13 CHARACTERS

1- TWO LETTERS FOR ENGINE FACTORY DESIGNATION

CD: SARAN-FRANCE

2- ONE DIGIT FOR NUMBER OF CYLINDERS

3- THREE DIGITS FOR DISPLACEMENT IN LITERS (068 FOR 6.8L)

4- ONE LETTER FOR DESIGNATED EMISSION LEVEL

L: TIER3/STAGE III EMISSION LEVEL

! FOR THE SIX DIGITS OF THE ACTUAL ENGINE NUMBER (5) COUNTING STARTS WITH 000001

5- SIX DIGITS

! IN THE PARTS CATALOG PAGES, ONLY THESE SIX DIGITS ARE SHOWN

ENGINE TYPE IS DEFINED BY 9 ALPHA-NUMERICAL CHARACTERS

6- FOUR DIGITS WITH SAME DEFINITION AS SERIAL NUMBER

7- ONE LETTER FOR ASPIRATION TYPE (H)

8- ONE LETTER FOR USER (T = DUBUQUE)

9- THREE DIGITS FOR VERSION (480)

10- TWO LETTERS AND FIVE DIGITS FOR ENGINE NUMBER

ENGINE APPLICATION CHART

755D CRAWLER LOADER.....CD6068HT480

REMARKS AND ABBREVIATIONS

TX1007193 -UN-04MAY06

PHRASE	ENGLISH	FRANCAIS	DEUTSCH	ITALIANO	ESPAÑOL	SVENSKA
ALSO ORDER, ORD W/	Also order	Commander aussi	Ebenso bestellen	Ordinare anche	Pedir también	Beställ även
AMP	Ampere	Ampère	Ampere	Ampere	Amperio	Ampere
APPL, APPL ONLY	This application only	Uniquement pour cette utilisation	Nur für diese Anwendung	Solo per questa applicazione	Solo para este propósito	Endast för denna användning
AR	As required	Selon le besoin	Nach Bedarf	Secondo necessità	Según necesidad	Vid behov
ASSY	Complete assembly	Ensemble complet	Kompl.-Zusammenbau	Gruppo completo	Montaje completo	Komplett montering
CA, CONVENIENCE ASSY	Convenience assembly	Ensemble convenance	Komfort-Zusammenbau	Montaggio pratico	Montaje de conveniencia	Lämplig montering
CCW	Counter-clockwise	Sens anti-horaire	Gegen Uhrzeigersinn	Senso antiorario	A la izquierda	Moturs
COMPLETE	Complete	Complet	Vollständig	Completo	Completo	Fullständig
COMPLETE GOODS	Complete goods	Compléter marchandises	Vollst. Waren	Merci complete	Mercancías completas	Kompleta varor
CTL CUT TO LENGTH	Cut to length	Couper à la longueur	Auf Länge zurechtschneiden	Tagliare alla lunghezza	Corte a la longitud	Skära till längd
CW	Clockwise	Sens horaire	Im Uhrzeigersinn	In senso orario	A la derecha	Medurs
FOR	For	Pour	Für	Per	Para	För
FRONT	Front	Avant	Vorn	Anteriore	Frente	Fram
GAS	Gasoline	Essence	Benzin	Benzina	Gasolina	Bensin
HP	Horsepower	Puissance en cv	Leistung	Potenza	Potencia	Hästkraft
HFWD	Hydraulic Front-wheel Drive	Traction Avant Hydraulique	Hydraulischer Vorderradantrieb	Trazione Anteriore Idraulica	Tracción Delantera Hidraulica	Hydraulisk Framhjulsdrift
HS, HEAD MARKED	High strength, head marked	Haute résistance, tête marquée	Hochfest, vorn gekennzeichnet	Contrassegnato in testa, ad alta resistenza	Alta fuerza, marca en cabeza	Hög styrka, huvudmärkt
ID	Inside diameter	Diamètre intérieur	Innendurchmesser	Diametro interno	Diá. interior	Innerdiameter
INCH	Inch	Pouce	In.	Pollice	Pulg.	Tum
INCL KEYS	Includes keys...	Comprend les positions...	Einschließlich Schlüssel...	Include le chiavette...	Incluye posiciones...	Inklusive nycklar...
INCL, INCLUDES	Includes...	Comprend...	Enthält...	Include...	Incluye...	Inkluderar...
INCLUDES PARTS/ ITEMS MARKED	Includes parts/items marked...	Comprend les pièces/articles marqués...	Enthält gekennzeichnete Teile/Pos. ...	Include i pezzi e gli elementi contrassegnati...	Incluye piezas marcadas...	Inkluderar markerade delar/artiklar...
INNER	Inner	Intérieur	Innerer	Interno	Interno	Inre, invändig
KIT	Kit	Kit	Kit	Kit	Juego	Sats
L	Number of links	Nombre de maillons	Anzahl der Glieder	Numero di maglie	Nº de eslabones	Antal länkar
LGTH	Length	Longueur	Länge	Lunghezza	Longitud	Längd
LGP	Low Ground Pressure	Faible Pression Au Sol	Niederer Bodendruck	Bassa Pressione Sul Suelo	Baja Presion Sobre El Suelo	Laagt Marktryck
LH	Left-hand	Gauche	Links	Sinistra	Izquierda	Vänster
LT	Long Track	Chenille Longue	Mit Langem Laufwerk	Cingolo Lungo	Cadena Largo	Laangt Larvband
LOW, LOWER	Lower	Inférieur	Unterer	Inferiore	Inferior	Nedre
MAKE FROM, MF MARKED	Make from Marked	Faireavec Marqué	Herstellen von Markiert	Fabbricare da Contrassegnato	Hacer de Marcado	Tillverka av Märkt

TX1007193

REMARKS AND ABBREVIATIONS

TX1007195

-UN-04MAY06

PHRASE	ENGLISH	FRANCAIS	DEUTSCH	ITALIANO	ESPAÑOL	SVENSKA
MATCHED SET	Matched set	Ensemble assorti	Passender Satz	Set abbinato	Sistema emparejado	Anpassad sats
MFWD	Mechanical Front-Wheel Drive	Pont Avant	Allradantrieb	Ruota Motrice Meccanica Anteriore	Traccion Delantera Mecanica	Mekanisk Framhjulsdrift
NA, NOT USED THIS APPL	Not used this application	Ne sert pas pour cette application	In dieser Anwendung nicht benutzt	Non usato in questa applicazione	No se usa en esta aplicación	Ej använd i detta sammanhang
NLA	No longer available	Epuisé	Nicht mehr lieferbar	Non più disponibile	Descontinuado	Ej längre tillgänglig
NSEP	Not supplied separately	Non livré séparément	Nicht einzeln lieferbar	Non fornito separatamente	No se suministra por separado	Kan ej erhållas separat
OD	Outside diameter	Diamètre extérieur	Außendurchmesser	Diametro esterno	Diá. exterior	Ytterdiameter
OPTIONAL	Optional	En option	Wahlweise	Opzionale	Opcional	Valfri
OR	Or	Ou	Oder	Oppure	O	Eller
ORD, ORDER	Order	Commander	Bestellen	Ordinare	Pídase	Order
OS	Oversize	Sur-dimension	Übergröße	Maggiorato	Sobretamaño	Överdimension
OUTER	Outer	Externe	Äußerer	Esterno	Externo	Yttre, utvändigt
PKG, PACKG	Package, Packet of	Emballage, paquet de	Verpackung, verpackt mit	In confezione da	Paquete de	I sats; paket
PTO	Power Take Off	Prise De Force	Zapfwelle	Preso Di Forza	Toma De Fuerza	Kraftuttag
RATIO	Ratio	Rapport	Übersetzungsverhältnis	Rapporto	Índice	Förhållande
REAR	Rear	Arrière	Hinten	Posteriore	Trasero	Bak; bakre
REMAN	Remanufactured	Echange Standard	Generalveberholt	Refatto	Refabricador por	Renoverad
REPL	Replaces	Remplace	Ersetzt	Sostituisce	Sustituye	Ersätter
RH	Right-hand	Droit	Rechts	Destra	Derecha	Höger
SN	Serial number	Numéro de série	Seriennummer	Numero di serie	Nº de serie	Seriennummer
STD	Standard	Standard	Standard	Standard	Normal	Standard
SUB	Replaced by	Remplacé par	Ersetzt durch	Sostituito da	Sustituido por	Ersatt med
SUB COMPONENTS	Substitute components (of the kit or assy)	Substituer les composants (du kit ou de l'ensemble)	Komponenten ersetzen (des Kits oder der Baugruppe)	Sostituire i componenti (del kito del gruppo)	Sustituir los componentes	Ersätta komponenterna (i satsen eller monteringen)
SUB FOR	Substitutes for	Remplace	Ersatz für	Sostituisce	Sustitución para	Ersätter
TEETH, Z	Number of gear teeth	Nombre de dents d'engrenages	Zahl der Zahnradzähne	Numero di denti dell'ingranaggio	Nº de dientes de engranaje	Antal redskapständer
TK	Thickness	Épaisseur	Stärke	Spessore	Espesor	Tjocklek
UP, UPPER	Upper	Supérieur	Oberer	Superiore	Superior	Övre
US	Undersize	Sous-dimension	Untergröße	Minorato	Subtamaño	Underdimension
USE WITH	Use with	À utiliser avec	Verwenden mit	Usare con	Usar con	Använd med
USE UNTIL EXHAUSTED	Use until exhausted	Utilisation jusqu'à épuisé	Verwenden, bis erschöpft	Usare fino all'esaurimento	Usar hasta agotar	Använda till uttömd
W/	With	Avec	Mit	Con	Con	Med; inklusive
W/O	Without	Sans	Ohne	Senza	Sin	Utan; exklusive
WHOLE GOODS	Whole goods	Marchandises entières	Vollständige Waren	Merci intere	Mercancías enteras	Hela varor
XLT	Extra Long Track	Chenille Extra Longue	Mit Extra Langem Laufwerk	Cingolo Extra Lungo	Cadena Extra Larga	Extra Laangt Larvband
VEC	Vehicle Electronic Controller	Controlleur Electronique Du Vehicule	Elektronisches Steuergeraet Des Fahrzeugs	Unità Di Comando Elettronica Del Veicolo	Unidad de Control Electronico del Vehiculo	Elektronisk Fordonsstyrenhet
VLC	Vehicle Load Center	Coffret De Repartition Du Vehicule	Verteilerstation Des Fahrzeugs	Centro Di Carico Del Veicolo	Centro De Cargas Del Vehiculo	Fordonets Elcentral

TX1007195

0001-8

755D CRAWLER LOADER

MEMORANDA

ALPHABETICAL INDEX

	PAGE		PAGE
A			
A/C CONDENSER ATTACHING HARDWARE.....	1833-4	BACKUP ALARM WIRE HARNESS	2004-2
A/C CONDENSER GRILLE	1810-10	BAFFLES, COOLING PACKAGE	0510-6
A/C CONDENSER PRESSURE SWITCH	1833-6	BARREL, BOOM LIFT CYLINDER	3165-2
A/C CONDENSER SEALING TRIM.....	1833-4	BARREL, BUCKET CYLINDER	3165-6
A/C CONDENSER, CONDENSER FAN, RECEIVER DRYER, AND HOSES.....	1833-6	BARREL, MULTI-PURPOSE BUCKET	3165-10
ACCESS COVERS, MAIN FRAME	1913-2	BASE, AIR SUSPENSION SEAT	1821-4
ACCESSORY RELAY	1674-14	BASE, MECHANICAL SUSPENSION SEAT	1821-6
ACCUMULATOR DECAL	1322-2	BASIC SERVICE TOOLS.....	2005-2
ACCUMULATOR LABEL	1322-2	BATTERIES.....	1671-2
ACCUMULATOR, HYDRAULIC SOLENOID MANIFOLD.....	0360-8	BATTERY	1671-2
ADAPTER, BLOCK HEATER.....	0404-4	BATTERY BRACKET	1671-2
ADAPTER, OIL FILTER, OIL LINES (8880).....	0407-7	BATTERY CABLES	1671-2
ADAPTER, TEETH, MULTI-PURPOSE BUCKET.....	3102-8	BATTERY POWER CABLE	1671-2
ADJUSTER, TRACK CHAIN TENSION AND PISTON.....	0131-4	BEARING, HYDROSTATIC PUMP.....	0360-4
AIR CLEANER ASSEMBLY	0520-2	BEARING, MAIN HYDRAULIC PUMP DRIVE SHAFT	2160-10
AIR CLEANER CANISTER ASSEMBLY	0520-2	BEARING, MAINFRAME TO UNDERCARRIAGE	0135-2
AIR CLEANER ELEMENT	0520-2	BEARING, PIVOT SHAFT	0135-2
AIR CLEANER HOSES AND PIP	0520-2	BEARINGS / CONNECTING ROD (4834)	0403-2
AIR CONDITIONER COMPONENT PARTS	1830-8	BEARINGS / CRANKSHAFT (4712).....	0401-1
AIR CONDITIONER CONDENSER FAN RELAY.....	1674-14	BEARINGS, CROSSBAR.....	0135-4
AIR CONDITIONING COMPRESSOR (7424) (HTJ85)	1830-2	BELLCRANK, LOADER BUCKET	3143-2
AIR CONDITIONING CONDENSER, CONDENSER FAN, RECEIVER DRYER, AND HOSES	1833-6	BELT TENSIONER (8724)	0429-2
AIR CONDITIONING EXPANSION VALVE	1830-8	BELT, DRIVE (2494).....	0429-3
AIR COOLER.....	0510-2	BELT, SEAT	1821-4
AIR DUCTS, ROUTING AND CLAMPS.....	1830-10	BIAS PISTON, MAIN HYDRAULIC PUMP	2160-10
AIR FILTER RESTRICTION PRESSURE SWITCH.....	0520-2	BLADE FLOAT SOLENOID VALVE	2160-28
AIR INTAKE HOSES, ENGINE	0520-4	BLADE LIFT VALVE SPOOL, MAIN HYDRAULIC CONTROL VALVE	2160-26
AIR INTAKE PIPES, ENGINE	0520-4	BLADE LOWER CIRCUIT PRESSURE RELIEF VALVE	2160-28
AIR INTAKE RAIN CAP	0520-2	BLADE LOWER PILOT OIL CUT-OFF SOLENOID VALVE	0360-8
AIR SUSPENSION SEAT	1821-4	BLADE TILT VALVE SPOOL, MAIN HYDRAULIC CONTROL VALVE	2160-26
AIR SUSPENSION SEAT COMPRESSOR MOTOR	1821-4	BLADE, MULTI-PURPOSE BUCKET	3102-6
ALARM, BACKUP	2004-2	BLADE, WINDSHIELD WIPER	1814-2
ALARM, WARNING	1674-4	BLOCK-CYLINDER (4633)	0404-2
ALTERNATOR ADJUSTING STRAP (6266) (HT061)	0423-2	BLOCK, HEATER	0404-4
ALTERNATOR MOUNTING BRACKETS (6266) (HT061)	0423-2	BOOM LIFT CYLINDER.....	3163-2
ANTENNA, RADIO	2001-2	BOOM LIFT CYLINDER COMPONENTS.....	3165-2
ANTI-CAVITATION PRESSURE RELIEF VALVE MAIN HYDRAULIC CONTROL VALVE	2160-28	BOOM LIFT CYLINDER LOCK SUPPORT.....	3165-18
ARM, WINDSHIELD WIPER.....	1814-2	BOOM LIFT CYLINDER MOUNTING PARTS.....	3163-2
ATTACHING HARDWARE, A/C CONDENSER.....	1833-4	BOOM LIFT CYLINDER PISTON AND ROD GUIDE	3165-4
ATTACHING HARDWARE, ENGINE COMPARTMENT HOOD.....	1910-2	BOOM LIFT CYLINDER PISTON AND ROD GUIDE	3165-12
AUXILIARY CONTROL VALVE COMPONENTS	3163-8	BOOM LIFT CYLINDER SHIELD.....	3165-16
AUXILIARY HYDRAULIC CONTROL FOR FRONT AND REAR ATTACHMENTS	3163-6	BOOM, LOADER	3143-4
AUXILIARY PILOT CONTROLLER HANDLE, REAR	4215-2	BOOT, AIR SUSPENSION SEAT	1821-4
AUXILIARY PILOT CONTROLLER HYDRAULIC HOSES, REAR.....	4215-2	BOOT, MECHANICAL SUSPENSION SEAT	1821-6
AUXILIARY PILOT CONTROLLER ROD.....	4215-2	BOTTOM GUARDS.....	1913-2
AUXILIARY PILOT CONTROLLER SHAFT	4215-2	BOTTOM SHIELDS.....	1913-2
AUXILIARY PILOT CONTROLLER, REAR.....	4215-2	BOX COMPONENT PARTS, SPLITTER.....	0841-4
AXLE, TRACK CHAIN IDLER	0134-2	BRACKET, BATTERY	1671-2
B			
BACKREST EXTENSION, SEAT	1821-2	BRACKET, CAB OVERHEAD CONSOLE.....	1674-10
BACKUP ALARM.....	2004-2	BRACKET, FAN DRIVE (4436)	0417-2
		BRACKET, INSTRUMENT PANEL	1816-2
		BRACKET, MAIN HYDRAULIC CONTROL VALVE.....	2160-24
		BRACKET, PLATFORM SUPPORT	1740-2
		BRACKET, TRACK ROLLER	0133-4
		BRACKET, TRACK ROLLER	0133-6
		BRACKETS, ALTERNATOR ADJUSTING (6266) (HT061)	0423-2
		BRACKETS, BOOM LIFT CYLINDER LOCK SUPPORT	3165-18
		BRACKETS, ENGINE MOUNTING.....	0540-2
		BRACKETS, TRACK IDLER	0134-2
		BRAKE (CONTINUED), FINAL DRIVES.....	0201-4

ALPHABETICAL INDEX - CONTINUED

<i>PAGE</i>	<i>PAGE</i>		
BRAKE PEDAL AND COMPONENT PARTS.....	1011-2	BUSHINGS, MAIN FRAME TO PLATFORM.....	1740-2
BRAKE PEDAL ASSEMBLY.....	1011-2	BUTTON, EMERGENCY STOP.....	1674-4
BRAKE PEDAL COVERS.....	1011-4	BUZZER.....	1674-4
BRAKE, FINAL DRIVES.....	0201-2	BY PASS TUBE / THERMOSTAT HOUSING (3917).....	0418-4
BRAKE, PARK.....	1812-4	BYPASS START LABEL.....	1322-2
BREAKER POWER SUPPLY, CIRCUIT.....	1671-2	BYPASS VALVE, HYDRAULIC OIL FILTER	
BREATHER (2917).....	0408-2	RESTRICTION.....	2164-2
BREATHING LINE, DUO CONE.....	2005-2	BYPASS VALVE, HYDRAULIC OIL FILTER	
BUCKET CONVERSION KIT, STANDARD BUCKET		RESTRICTION.....	2164-4
TO MULTI-PURPOSE BUCKET.....	3102-6	BYPASS VALVE, HYDROSTATIC COOLER.....	0360-16
BUCKET CUTTING EDGE, EXTRA ATTACHMENT,			
STANDARD BUCKET.....	3102-2		
BUCKET CUTTING EDGE, MULTI-PURPOSE		C	
BUCKET.....	3102-6	CAB A/C COMPONENT PARTS.....	1830-8
BUCKET CUTTING EDGE, MULTI-PURPOSE		CAB COMPONENTS.....	1810-10
BUCKET EXTRA ATTACHMENT.....	3102-8	CAB DOOR HINGES.....	1810-6
BUCKET CUTTING EDGE, MULTI-PURPOSE		CAB DOOR HINGES.....	1810-8
BUCKET FRONT JAW.....	3102-10	CAB DOOR ISOLATORS.....	1810-6
BUCKET CUTTING EDGE, STANDARD BUCKET.....	3102-4	CAB DOOR LATCH.....	1810-4
BUCKET CYLINDER.....	3143-6	CAB DOOR WINDOW.....	1810-4
BUCKET CYLINDER ATTACHMENTS.....	3143-6	CAB DOORS.....	1810-4
BUCKET CYLINDER CLAMPS.....	3143-6	CAB DOORS.....	1810-8
BUCKET CYLINDER COMPONENTS.....	3165-6	CAB FLOOR MAT.....	1812-8
BUCKET CYLINDER GUARD.....	3165-14	CAB GROUND CABLE.....	1671-2
BUCKET CYLINDER GUARD KIT.....	3143-6	CAB HEADLINER AND INTERIOR PANELING.....	1810-12
BUCKET CYLINDER OIL LINES.....	3143-6	CAB HEATER COMPONENT PARTS.....	1830-8
BUCKET CYLINDER PISTON AND ROD GUIDE.....	3165-8	CAB MOUNTED WORK LIGHTS.....	1673-2
BUCKET CYLINDER PROTECTION.....	3165-14	CAB OVERHEAD CONSOLE, BRACKET, FUSES,	
BUCKET END BITS, STANDARD BUCKET.....	3102-4	AND RELAYS.....	1674-10
BUCKET FRONT JAW COMPONENT PARTS,		CAB PLATFORM.....	1812-4
MULTI-PURPOSE BUCKET.....	3102-10	CAB PLATFORM SEAT PLATE, MATS, AND	
BUCKET HINGE PIN, MULTI-PURPOSE BUCKET.....	3102-6	SOUND INSULATION.....	1812-8
BUCKET HYDRAULIC CYLINDER, MULTI-PURPOSE		CAB REMOVAL EYEBOLT.....	2005-2
BUCKET.....	3102-6	CAB SIDE COMPARTMENT DOORS.....	1913-4
BUCKET HYDRAULIC LINES, MULTI-PURPOSE.....	3163-12	CAB TILT PUMP.....	1812-10
BUCKET KIT, COMPLETE		CAB WINDOW ISOLATOR.....	1814-4
STANDARD BUCKET.....	3102-2	CAB WINDOW WASHER FLUID RESERVOIR PUMP,	
BUCKET PILOT CONTROLLER.....	3162-2	PLUG, CAP, AND CAP KEY.....	1814-2
BUCKET PIN FASTENER, MULTI-PURPOSE		CAB WINDOWS.....	1814-4
BUCKET.....	3102-8	CAB WINDSHIELD.....	1814-4
BUCKET PINS FOR TEETH, STANDARD BUCKET.....	3102-2	CAB WIRING HARNESS CLAMPS.....	1674-20
BUCKET PIVOT PIN, MULTI-PURPOSE BUCKET.....	3102-6	CAB WORK LIGHTS (OPTIONAL).....	1673-4
BUCKET TEETH ADAPTER, STANDARD BUCKET.....	3102-2	CAMSHAFT (4633).....	0404-2
BUCKET TEETH, MULTI-PURPOSE BUCKET.....	3102-8	CAP AND KEY, FUEL TANK.....	0564-2
BUCKET TEETH, STANDARD BUCKET.....	3102-2	CAP, CAB WINDOW WASHER FLUID RESERVOIR.....	1814-2
BUCKET TOOTH ADAPTER, MULTI-PURPOSE		CAP, SPLITTER BOX FILLER.....	0841-4
BUCKET.....	3102-8	CAP, WINDOW WASHER RESIVOIR.....	1814-2
BUCKET TOOTH ADAPTER, STANDARD BUCKET.....	3102-2	CARRIER ROLLER.....	0133-2
BUCKET WEAR PLATE, MULTI-PURPOSE BUCKET		CARRIER ROLLER COVER.....	0133-2
FRONT JAW.....	3102-10	CARRIER ROLLER SUPPORT.....	0133-2
BUCKET WEAR PLATES, MULTI-PURPOSE BUCKET.....	3102-6	CARRIER ROLLER WITH SHAFT.....	0133-2
BUCKET WEAR PLATES, STANDARD BUCKET.....	3102-4	CASE DRAIN FILTER MANIFOLD HOSES.....	0363-4
BUCKET, COMPLETE FIELD KIT,		CASE DRAIN FILTERS.....	0360-16
STANDARD BUCKET.....	3102-2	CHAIN BUSHINGS, TRACK.....	0132-2
BUCKET, MULTI-PURPOSE.....	3102-6	CHAIN DRIVE SPROCKET, TRACK.....	0132-6
BUCKET, STANDARD.....	3102-2	CHAIN GUIDE SLIDE, FRONT.....	0131-2
BULB, CAB WORK LIGHTS (OPTIONAL).....	1673-4	CHAIN MASTER LINK, TRACK.....	0132-2
BULB, INSTRUMENT PANEL GAUGES.....	1674-6	CHAIN PINS, TRACK.....	0132-2
BULB, STANDARD CAB LIGHTS.....	1673-2	CHAIN SEALS, TRACK.....	0132-2
BUSHING, BELLCRANK, LOADER BUCKET.....	3143-2	CHAIN SHOE, MASTER TRACK.....	0132-2
BUSHING, LINKAGE, LOADER BUCKET.....	3143-2	CHAIN TENSION ADJUSTER AND PISTON.....	0131-4
BUSHING, MAIN FRAME TO THREE SHANK		CHAIN TENSION CAUTION LABEL.....	1322-2
RIPPER (LOWER).....	4201-4	CHAIN, BOOM LIFT CYLINDER LOCK SUPPORT.....	3165-18
BUSHING, THREE SHANK RIPPER TO MAIN		CHAIN, TRACK ASSEMBLY WITHOUT.....	0132-2
FRAME (LOWER).....	4201-4	CHARGE OIL FILTER TO HYDROSTATIC MOTOR	
BUSHING, TRACK CHAIN IDLER.....	0134-2	HOSES.....	0363-4
BUSHINGS, CROSSBAR.....	0135-4		

ALPHABETICAL INDEX - CONTINUED

	PAGE		PAGE
CHARGE OIL FILTER TO HYDROSTATIC PUMP HOSES.....	0363-2	CONNECTORS, ELECTRICAL.....	1674-30
CHARGE OIL PRESSURE REGULATING MANIFOLD.....	0360-12	CONNECTORS, ELECTRICAL (PAGE 2).....	1674-32
CHARGE OIL PRESSURE REGULATING MANIFOLD HOSES.....	0363-6	CONNECTORS, ELECTRICAL (PAGE 3).....	1674-34
CHARGE OIL PRESSURE SWITCH.....	0360-14	CONNECTORS, ELECTRICAL (PAGE 4).....	1674-36
CHARGE OIL PRESSURE TEST PORT AND HOSE.....	0363-8	CONNECTORS, ELECTRICAL (PAGE 5).....	1674-38
CHARGE OIL PUMP PRESSURE REGULATING VALVE.....	0360-12	CONNECTORS, ELECTRICAL (PAGE 6).....	1674-40
CHARGE PRESSURE RELIEF VALVE, HYDROSTATIC PUMP.....	0360-4	CONNECTORS, ELECTRICAL (PAGE 7).....	1674-42
CHARGE PUMP COUPLING, HYDROSTATIC.....	0360-18	CONNECTORS, ELECTRICAL (PAGE 8).....	1674-44
CHARGE PUMP COUPLING, HYDROSTATIC.....	0360-20	CONNECTORS, ELECTRICAL (PAGE 9).....	1674-46
CHARGE PUMP HOSES.....	0363-6	CONSOLE, CAB OVERHEAD.....	1674-10
CHARGE PUMP, HYDROSTATIC.....	0360-18	CONTROL LEVER COMPONENTS, RIPPER.....	4215-2
CHARGE PUMP, HYDROSTATIC.....	0360-20	CONTROL LEVER HANDLE, RIPPER.....	4215-2
CHECK VALVE, HYDROSTATIC SOLENOID MANIFOLD.....	0360-8	CONTROL LEVER, RIPPER HYDRAULIC.....	4215-2
CIRCUIT BOARD, LOAD CENTER.....	1674-12	CONTROL PISTON/CYLINDER, HYDROSTATIC PUMP.....	0360-4
CIRCUIT BREAKER LABEL.....	1322-2	CONTROL VALVE COMPONENTS, FRONT AUXILIARY HYDRAULIC CONTROL.....	3163-8
CIRCUIT BREAKER, POWER SUPPLY.....	1671-2	CONTROL VALVE, LOADER HOSES.....	2163-4
CLAMPS, AIR DUCTS.....	1830-10	CONTROL VALVE, MAIN HYDRAULIC (COMPLETE).....	2160-24
CLAMPS, BUCKET CYLINDER.....	3143-6	CONTROL, AUXILIARY HYDRAULIC, FOR FRONT AND REAR ATTACHMENTS.....	3163-6
CLAMPS, CAB WIRING HARNESS.....	1674-20	CONTROLLER VALVE, RIPPER.....	4215-2
CLAMPS, FRONT AUXILIARY HYDRAULIC LINE.....	3163-14	CONTROLLER, AUXILIARY PILOT, REAR.....	4215-2
CLAMPS, HEATER.....	1830-6	CONTROLLER, RIPPER.....	4215-2
CLAMPS, MAIN WIRING HARNESS.....	1674-22	CONVERSION KIT HYDRAULIC LINES, STANDARD BUCKET TO MULTI-PURPOSE BUCKET.....	3163-12
CLAMPS, MAIN WIRING HARNESS.....	1674-24	CONVERSION KIT, STANDARD BUCKET TO MULTI-PURPOSE BUCKET.....	3102-6
CLEANOUT COVER, FUEL TANK.....	0564-2	COOLER BYPASS VALVE TO CHARGE PUMP HOSE.....	0363-6
COAT HOOK.....	1810-10	COOLER, AIR.....	0510-2
CODE 1144 - ROCKER ARM COVER.....	0402-4	COOLER, EXPANSION TANK.....	0510-12
CODE 1201 - OIL FILLER NECK, RIGHT SIDE.....	0407-4	COOLER, FUEL.....	0510-2
CODE 1461 - FLYWHEEL HOUSING.....	0433-2	COOLER, HYDRAULIC OIL.....	0510-2
CODE 1586 - FLYWHEEL.....	0433-3	COOLER, OIL / INTERMEDIATE HOUSING(5945).....	0419-2
CODE 2001 - WATER PUMP PULLEY.....	0417-4	COOLING PACKAGE.....	0510-2
CODE 2494-DRIVE BELT WITHOUT BELT GUARD.....	0429-3	COOLING PACKAGE, BAFFLES.....	0510-6
CODE 2873 - EXHAUST MANIFOLD.....	0410-2	CORE, HEAT EXCHANGERS (HEATER/AIR CONDITIONER).....	1830-8
CODE 2917 - BREATHER.....	0408-2	COTTER PIN, BOOM LIFT CYLINDER LOCK SUPPORT.....	3165-18
CODE 35DZ - FINAL FUEL FILTER.....	0420-2	COUNTERWEIGHT, REAR.....	1749-2
CODE 3612 - FRONT PLATE AND IDLE GEARS.....	0401-2	COUPLER, SPLITTER DRIVE.....	0841-2
CODE 3917 - THERMOSTAT HOUSING / TUBE.....	0418-4	COUPLING, MAIN HYDRAULIC PUMP.....	2160-12
CODE 4002 - OIL DIPSTICK.....	0407-5	COVER THERMOSTAT (2154).....	0418-2
CODE 4633 - CYLINDER BLOCK / CAMSHAFT.....	0404-2	COVER, CARRIER ROLLER.....	0133-2
CODE 4712 - CRANKSHAFT / BEARINGS.....	0401-1	COVER, GRILLE.....	1921-2
CODE 5024 - OIL PUMP.....	0407-6	COVER, GRILLE.....	1921-4
CODE 5120 - CYLINDER HEAD.....	0409-2	COVER, HYDRAULIC OIL RESERVOIR.....	2164-6
CODE 5945 - OIL COOLER / INTERM. HOUSING.....	0419-2	COVER, HYDRAULIC OIL RESERVOIR FILTER.....	2164-2
CODE 63AX - FUEL LINES.....	0420-6	COVER, HYDRAULIC OIL RESERVOIR FILTER.....	2164-4
CODE 65TC - TURBOCHARGER AND OIL LINES.....	0416-2	COVER, HYDROSTATIC MOTOR.....	0360-24
CODE 6698 - PLUG, WITHOUT WATER SENSOR.....	0578-4	COVER, INSTRUMENT PANEL VANDAL.....	1816-2
CODE 6731 - ENGINE SENSORS (HTJ85).....	0578-2	COVER, LOAD CENTER.....	1674-14
CODE 7424 - AIR CONDITIONING COMPRESSOR (HTJ85).....	1830-2	COVER, MAIN HYDRAULIC CONTROL VALVE.....	2160-26
CODE 8724 - BELT TENSIONER.....	0429-2	COVER, OIL FILLER NECK (1201).....	0407-4
COLD WEATHER STARTING AID (4343).....	0578-6	COVER, ROCKER ARM (1144).....	0402-4
COMMON RAIL SYSTEM, HIGH PRESSURE (16C7).....	0413-2	COVER, TIMING GEAR AND WATER PUMP (4436).....	0417-2
COMPLETE ENGINE.....	0404-6	COVER, TRACK IDLER.....	0134-2
COMPONENTS, HYDROSTATIC MOTOR.....	0360-24		
COMPRESSOR, AIR CONDITIONING (7424) (HTJ85).....	1830-2		
COMPRESSOR, AIR SUSPENSION SEAT.....	1821-4		
CONDENSER FAN, A/C.....	1833-6		
CONDENSER GRILLE.....	1810-10		
CONDITIONING-AIR COMPRESSOR (7424) (HTJ85).....	1830-2		
CONNECTING ROD AND PISTON (4834).....	0403-2		
CONNECTOR TERMINAL, ELECTRICAL.....	1816-2		

000I-12

755D CRAWLER LOADER

ALPHABETICAL INDEX - CONTINUED

	PAGE		PAGE
COVER, WIPER MOTOR.....	1810-12	DECAL, DIESEL FUEL ONLY.....	1322-2
COVERS, BRAKE PEDAL.....	1011-4	DECAL, ENGINE SPEED.....	1322-2
COVERS, FOOT PEDAL STEERING.....	0962-6	DECAL, ENGINE START AND STOP PROCEDURE.....	1322-2
COVERS, FRAME.....	1740-6	DECAL, FUSE BLOCK.....	1322-2
COVERS, MAIN FRAME ACCESS.....	1913-2	DECAL, GROUND DISCONNECT SWITCH.....	1322-2
COWL SUPPORT.....	1910-2	DECAL, HYDRAULIC DOZER CONTROL FORWARD, NEUTRAL, REVERSE.....	1322-2
COWL, FAN, RADIATOR.....	0510-6	DECAL, HYDRAULIC FLUID.....	1322-2
CRANKSHAFT / BEARINGS (4712).....	0401-1	DECAL, HYDRAULIC JOYSTICK CONTROL.....	1322-2
CRANKSHAFT PULLEY (1321).....	0429-1	DECAL, JOYSTICK CONTROL.....	1322-2
CROSSBAR.....	0135-4	DECAL, LEAPING DEERE.....	1322-2
CROSSBAR BEARINGS.....	0135-4	DECAL, LIFT HOOK.....	1322-2
CROSSBAR BUSHINGS.....	0135-4	DECAL, LIFT HOOK.....	1749-2
CROSSBAR ISOLATOR.....	0135-4	DECAL, PARK BRAKE SWITCH.....	1322-2
CROSSBAR PINS.....	0135-4	DECAL, PARK LOCK, CAUTION OPERATING.....	1322-2
CROSSBAR VENT VALVE.....	0135-4	DECAL, PEDAL STEERING.....	1322-2
CURTAIN, SHADE.....	1810-10	DECAL, PERIODIC MAINTENANCE.....	1322-2
CUSHION, AIR SUSPENSION SEAT.....	1821-4	DECAL, RADIATOR CAP.....	1322-2
CUSHION, MECHANICAL SUSPENSION SEAT.....	1821-6	DECAL, REAR DEERE.....	1322-2
CUTTING EDGE, EXTRA ATTACHMENT, STANDARD BUCKET.....	3102-2	DECAL, ROPS CERTIFICATION.....	1322-2
CUTTING EDGE, MULTI-PURPOSE BUCKET.....	3102-6	DECAL, SEAT BELT.....	1322-2
CUTTING EDGE, MULTI-PURPOSE BUCKET EXTRA ATTACHMENT.....	3102-8	DECAL, TILT LOCK.....	1322-2
CUTTING EDGE, MULTI-PURPOSE BUCKET FRONT JAW.....	3102-10	DECAL, TRACK ADJUSTER.....	1322-2
CUTTING EDGE, STANDARD BUCKET.....	3102-4	DECAL, WINDSHIELD WASHER.....	1322-2
CUTTING EDGES, MULTI-PURPOSE BUCKET.....	3102-12	DECAL, 755D.....	1322-2
CYLINDER BARREL, BOOM LIFT.....	3165-2	DECALS (FRENCH).....	1322-6
CYLINDER BARREL, BUCKET.....	3165-6	DECALS (SPANISH).....	1322-4
CYLINDER BARREL, MULTI-PURPOSE BUCKET.....	3165-10	DECALS AND LABELS.....	1322-2
CYLINDER BLOCK (4633).....	0404-2	DECELERATOR LABEL.....	1322-2
CYLINDER BLOCK, HYDROSTATIC MOTOR.....	0360-24	DEERE FRONT GRILLE LABEL.....	1322-2
CYLINDER BLOCK, MAIN HYDRAULIC PUMP.....	2160-10	DIAGNOSTIC HOSES AND FITTINGS.....	0363-8
CYLINDER COMPONENTS, THREE SHANK RIPPER.....	4265-2	DIESEL FUEL ONLY LABEL.....	1322-2
CYLINDER GUARD KIT, BUCKET.....	3143-6	DIPSTICK-OIL (4002).....	0407-5
CYLINDER GUARD, MULTI-PURPOSE BUCKET.....	3102-14	DIPSTICK, SPLITTER BOX.....	0841-4
CYLINDER HEAD (5120).....	0409-2	DISPLACEMENT CONTROL VALVE, HYDROSTATIC PUMP.....	0360-10
CYLINDER LINER (4834).....	0403-2	DISPLACEMENT PISTON, MAIN HYDRAULIC PUMP.....	2160-10
CYLINDER LOCK SUPPORT, BOOM LIFT.....	3165-18	DOOR CYLINDERS, CAB SIDE COMPARTMENT.....	1913-4
CYLINDER PISTON, THREE SHANK RIPPER (COMPLETE).....	4265-2	DOOR LATCH KIT.....	1310-2
CYLINDER PROTECTION FOR MULTI-PURPOSE BUCKET.....	3102-14	DOOR LATCH KIT KEY.....	1310-2
CYLINDER PROTECTION, BUCKET.....	3165-14	DOOR LOCK, CAB SIDE COMPARTMENT.....	1913-4
CYLINDER ROD, THREE SHANK RIPPER.....	4265-2	DOOR STOP, CAB SIDE COMPARTMENT.....	1913-4
CYLINDER SHIELD, BOOM LIFT.....	3165-16	DOOR, CAB SIDE COMPARTMENT.....	1913-4
CYLINDER, BOOM LIFT.....	3163-2	DOOR, ENGINE COMPARTMENT.....	1910-4
CYLINDER, BOOM LIFT (COMPONENTS).....	3165-2	DOOR, HYDRAULIC OIL RESERVOIR.....	2164-6
CYLINDER, BUCKET COMPONENTS.....	3165-6	DOORS, CAB.....	1810-4
CYLINDER, ENGINE COMPARTMENT DOOR.....	1910-4	DOORS, CAB.....	1810-8
CYLINDER, HYDRAULIC, THREE SHANK RIPPER (COMPLETE).....	4201-4	DOUBLE-FLANGE TRACK ROLLER.....	0133-6
CYLINDER, MULTI-PURPOSE BUCKET (COMPONENTS).....	3165-10	DRAIN HOSE, ENVIRONMENTAL.....	2005-2
CYLINDER, THREE SHANK RIPPER (COMPLETE).....	4265-2	DRAIN PLUG, HYDRAULIC OIL RESERVOIR.....	2164-2
CYLINDERS, CAB SIDE COMPARTMENT DOORS.....	1913-4	DRAIN PLUG, HYDRAULIC OIL RESERVOIR.....	2164-4
		DRIVE BELT (2494).....	0429-3
		DRIVE BELT PULLEY (2494).....	0429-3
		DRIVE COUPLING, MAIN HYDRAULIC PUMP.....	2160-12
		DRIVE MOTOR COMPLETE, HYDROSTATIC.....	0360-26
		DRIVE SHAFT (CONTINUED), UNIVERSAL FINAL.....	0201-4
		DRIVE SHAFT BEARING, MAIN HYDRAULIC PUMP.....	2160-10
		DRIVE SHAFT, HYDROSTATIC MOTOR.....	0360-24
		DRIVE SHAFT, MAIN HYDRAULIC PUMP.....	2160-10
		DRIVE SHAFT, UNIVERSAL FINAL.....	0201-2
		DRIVE SPLITTER BOX PARTS, ENGINE.....	0841-4
		DRIVE SPROCKET, TRACK CHAIN.....	0132-6
		DRIVES (CONTINUED), FINAL.....	0201-4
		DRIVES, FINAL.....	0201-2
		DRIVESHAFT, HYDROSTATIC PUMP.....	0360-4
		DRYER, A/C CONDENSER.....	1833-6
		DUCTS, AIR CONDITIONING.....	1830-10
DECAL, ACCUMULATOR.....	1322-2		
DECAL, BYPASS START.....	1322-2		
DECAL, CHAIN TENSION CAUTION.....	1322-2		
DECAL, CIRCUIT BREAKER.....	1322-2		
DECAL, DECELERATOR.....	1322-2		
DECAL, DEERE FRONT GRILLE.....	1322-2		

D

ALPHABETICAL INDEX - CONTINUED

	PAGE		PAGE
DUCTS, HEATING	1830-10	EXTENSION, SEAT BACKREST	1821-2
DUO CONE, BREATHING LINE	2005-2	EXTRA ATTACHMENT CUTTING EDGE, STANDARD BUCKET	3102-2
DUO CONE, REFILLING HOSE	2005-2	EYEBOLT, CAB REMOVAL	2005-2
 E 			
ECU/TCU LABEL	1322-2	 F 	
EGR (8901)	0414-4	FAN COWL, RADIATOR	0510-6
ELBOW FITTING, WINDSHIELD WIPER	1814-2	FAN DRIVE MOTOR, HYDRAULIC	0510-8
ELECTRICAL CONNECTOR TERMINAL	1816-2	FAN DRIVE SYSTEM PRESSURE TEST PORT AND HOSE	0363-8
ELECTRICAL CONNECTORS	1674-30	FAN GAURD, RADIATOR	0510-4
ELECTRICAL CONNECTORS (PAGE 2)	1674-32	FAN GUARD, RADIATOR	0510-6
ELECTRICAL CONNECTORS (PAGE 3)	1674-34	FAN HOUSING, RADIATOR	0510-2
ELECTRICAL CONNECTORS (PAGE 4)	1674-36	FAN MOTOR PRESSURE REGULATING SOLENOID	0510-8
ELECTRICAL CONNECTORS (PAGE 5)	1674-38	FAN MOTOR, HYDRAULIC	0510-4
ELECTRICAL CONNECTORS (PAGE 6)	1674-40	FAN MOTOR, PROPORTIONAL SOLENOID	0510-8
ELECTRICAL CONNECTORS (PAGE 7)	1674-42	FAN SHROUD, RADIATOR	0510-2
ELECTRICAL CONNECTORS (PAGE 8)	1674-44	FAN, A/C CONDENSER	1833-6
ELECTRICAL CONNECTORS (PAGE 9)	1674-46	FAN, RADIATOR	0510-4
ELECTRICAL DISCONNECT SWITCH	1671-2	FILLER NECK, FUEL TANK	0564-2
ELECTRICAL SOCKET, TWELVE VOLT	1674-4	FILTER ELEMENT, HYDRAULIC OIL RESERVOIR	2164-2
ELEMENTS, CASE DRAIN FILTERS	0360-16	FILTER ELEMENT, HYDRAULIC OIL RESERVOIR	2164-4
EMERGENCY STOP BUTTON	1674-4	FILTER HOUSING, HYDROSTATIC OIL	0360-14
END BIT, MULTI-PURPOSE BUCKET FRONT JAW	3102-10	FILTER-FUEL, FINAL (35DZ)	0420-2
END BITS, STANDARD BUCKET	3102-4	FILTER-OIL, ADAPTER, OIL LINES (8880)	0407-7
ENDPLATE, HYDROSTATIC PUMP	0360-6	FILTER, AIR CLEANER	0520-2
ENGINE	0404-6	FILTER, CASE DRAIN	0360-16
ENGINE AIR INTAKE HEATER RELAY	1671-2	FILTER, HYDRAULIC AND HYDROSTATIC CASE DRAIN	2164-2
ENGINE AIR INTAKE HOSES	0520-4	FILTER, HYDRAULIC AND HYDROSTATIC CASE DRAIN	2164-4
ENGINE AIR INTAKE PIPES	0520-4	FILTER, HYDRAULIC OIL (IN HYDRAULIC RESERVOIR)	2164-2
ENGINE COMPARTMENT DOOR	1910-4	FILTER, HYDRAULIC OIL (IN HYDRAULIC RESERVOIR)	2164-4
ENGINE COMPARTMENT HOOD	1910-4	FILTER, HYDROSTATIC OIL	0360-14
ENGINE COMPARTMENT HOOD AND REAR HOOD SUPPORT	1910-2	FINAL DRIVE BRAKE PISTON	0201-2
ENGINE CONTROLLER (16C7)	0413-2	FINAL DRIVE BRAKE PISTON (CONTINUED)	0201-4
ENGINE COOLANT TEMPERATURE GAUGE	1674-6	FINAL DRIVE FITTINGS	0360-26
ENGINE DRIVE SPLITTER BOX PARTS	0841-4	FINAL DRIVE HYDRAULIC HOSES	0201-12
ENGINE MOUNTING BRACKETS	0540-2	FINAL DRIVE INNER HOUSING	0201-2
ENGINE MOUNTING BRACKETS ISOLATORS	0540-2	FINAL DRIVE INNER HOUSING (CONTINUED)	0201-4
ENGINE OVERSPEED RETARDER SOLENOID VALVE	2160-8	FINAL DRIVE INPUT GEAR	0201-2
ENGINE SENSORS (6731) (HTJ85)	0578-2	FINAL DRIVE INPUT GEAR (CONTINUED)	0201-4
ENGINE SPEED LABEL	1322-2	FINAL DRIVE OUTER HOUSING	0201-2
ENGINE SPEED POTENTIOMETER	1674-4	FINAL DRIVE OUTER HOUSING (CONTINUED)	0201-4
ENGINE START AND STOP PROCEDURE LABEL	1322-2	FINAL DRIVES	0201-2
ENVIRONMENTAL DRAIN HOSE	2005-2	FINAL DRIVES (CONTINUED)	0201-4
EVAPORATOR, HEAT EXCHANGERS (HEATER/AIR CONDITIONER)	1830-8	FINAL DRIVES BRAKE	0201-2
EXHAUST GAS RECIRCULATION (8901)	0414-4	FINAL DRIVES BRAKE (CONTINUED)	0201-4
EXHAUST MANIFOLD (2873)	0410-2	FINAL FUEL FILTER (35DZ)	0420-2
EXHAUST PIPE	1910-2	FITTINGS, CASE DRAIN FILTER MANIFOLD	0360-16
EXHAUST PIPE GASKET, MUFFLER	0530-2	FITTINGS, CHARGE OIL PRESSURE REGULATING MANIFOLD	0360-12
EXHAUST PIPE HEAT SHIELD	0530-2	FITTINGS, FRONT AND REAR AUXILIARY HYDRAULIC CONTROL	3163-6
EXHAUST PIPE, MUFFLER	0530-2	FITTINGS, FRONT AUXILIARY PILOT HOSE	3163-10
EXHAUST VALVE (5120)	0409-2	FITTINGS, HEATER	1830-6
EXPANSION TANK COOLER	0510-12	FITTINGS, HYDROSTATIC CHARGE PUMP	0360-18
EXPANSION TANK COOLER HOSES	0510-12	FITTINGS, HYDROSTATIC DRIVE HYDRAULIC HOSES AND PARK BRAKE	0363-4
EXPANSION TANK COOLER MOUNTING BRACKET	0510-12	FITTINGS, HYDROSTATIC DRIVE MOTOR AND FINAL DRIVE	0360-26
EXPANSION VALVE, AIR CONDITIONING	1830-8	FITTINGS, HYDROSTATIC MOTOR HYDRAULIC HOSES	0363-2

ALPHABETICAL INDEX - CONTINUED

	PAGE
FITTINGS, HYDROSTATIC SOLENOID MANIFOLD.....	0360-8
FITTINGS, HYDROSTATIC TEST PORT.....	0363-8
FITTINGS, LOADER BOOM.....	3143-4
FITTINGS, MAIN HYDRAULIC PUMP.....	2160-12
FITTINGS, PILOT CONTROLLER.....	3162-2
FITTINGS, RADIATOR.....	0510-4
FLANGE, HYDROSTATIC DRIVE HYDRAULIC HOSES AND PARK BRAKE.....	0363-4
FLANGE, HYDROSTATIC MOTOR HYDRAULIC HOSES.....	0363-2
FLANGE, MOUNTING, MAIN HYDRAULIC PUMP.....	2160-12
FLANGED AXLE SHAFT SEAL.....	0201-2
FLANGED AXLE SHAFT SEAL (CONTINUED).....	0201-4
FLOOR MAT.....	1812-8
FLYWHEEL (1586).....	0433-3
FLYWHEEL DRIVE COUPLER.....	0841-2
FLYWHEEL HOUSING (1461).....	0433-2
FOOT PEDAL STEERING.....	0962-2
FOOT PEDAL STEERING COVERS.....	0962-6
FOOTBOARD, LEFT.....	1740-4
FOOTREST, CAB PLATFORM.....	1812-4
FORWARD PROPORTIONAL SOLENOID VALVE.....	0360-10
FORWARD, NEUTRAL REVERSE LABEL.....	1322-2
FRAME COVERS.....	1740-6
FRAME WEAR PLATE, TRACK.....	0131-4
FRAME, AIR SUSPENSION SEAT.....	1821-4
FRAME, MECHANICAL SUSPENSION SEAT.....	1821-6
FRAME, RADIATOR.....	0510-2
FRAME, THREE SHANK RIPPER.....	4201-4
FRAME, TRACK.....	0131-2
FRAME, TRACK.....	0131-4
FRENCH LABELS AND DECALS.....	1322-6
FRONT AND REAR AUXILIARY HYDRAULIC CONTROL.....	3163-6
FRONT AND REAR AUXILIARY HYDRAULIC CONTROL HOSES AND FITTINGS.....	3163-6
FRONT AUXILIARY HYDRAULIC HOSES.....	3163-14
FRONT AUXILIARY HYDRAULIC LINES.....	3163-14
FRONT AUXILIARY VALVE FITTINGS.....	3163-10
FRONT BRACKET, CAB OVERHEAD CONSOLE.....	1674-10
FRONT CHAIN GUIDE SLIDE.....	0131-2
FRONT GRILLE LABEL, DEERE.....	1322-2
FRONT HYDROSTATIC CHARGE PUMP.....	0360-18
FRONT HYDROSTATIC CHARGE PUMP.....	0360-20
FRONT PLATE (3612).....	0401-2
FUEL COOLER.....	0510-2
FUEL FILTER GASKET KIT (35DZ).....	0420-2
FUEL GAUGE, INSTRUMENT PANEL.....	1674-6
FUEL HOSES.....	0563-2
FUEL LINES (63AX).....	0420-6
FUEL LINES, HIGH PRESSURE (16C7).....	0413-2
FUEL PUMP (3713).....	0421-2
FUEL PUMP INJECTION, COMMON RAIL (16C7).....	0413-2
FUEL TANK.....	0564-2
FUEL TANK CAP AND KEY.....	0564-2
FUEL TANK CHECK VALVE.....	0564-2
FUEL TANK FILLER NECK.....	0564-2
FUEL TANK PLUMBING.....	0563-2
FUEL TANK TO WATER SEPARATOR FUEL HOSES.....	0563-2
FUSE BLOCK LABEL.....	1322-2
FUSE HOLDER, CAB OVERHEAD CONSOLE.....	1674-10
FUSES, CAB OVERHEAD CONSOLE.....	1674-10
FUSES, LOAD CENTER CIRCUIT BOARD.....	1674-12

G

GASKET KIT, FUEL FILTER (35DZ).....	0420-2
GASKET, MUFFLER EXHAUST PIPE.....	0530-2
GASKET, OIL FILLER NECK (1201).....	0407-4
GASKET, ROCKER ARM COVER (1144).....	0402-4
GASKETS, INSTRUMENT PANEL.....	1816-2
GAUGES, INSTRUMENT PANEL.....	1674-6
GEAR, OIL PUMP (5024).....	0407-6
GEAR, SPLITTER BOX.....	0841-4
GEAR, SUN, FINAL DRIVE.....	0201-2
GEARS-IDLE (UPPER AND LOWER) (3612).....	0401-2
GRILLE.....	1921-2
GRILLE.....	1921-4
GRILLE, A/C CONDENSER.....	1810-10
GROUND CABLE, BATTERY.....	1671-2
GROUND CABLE, CAB.....	1671-2
GROUND DISCONNECT SWITCH LABEL.....	1322-2
GUARD, BUCKET CYLINDER.....	3165-14
GUARD, CYLINDER, MULTI-PURPOSE BUCKET.....	3102-14
GUARDS, BOTTOM.....	1913-2
GUARDS, PILOT CONTROLLER.....	3163-4
GUARDS, ROCK.....	0138-2
GUARDS, SPROCKET.....	0138-4
GUARDS, TRACK.....	0138-2
GUIDE SLIDE, FRONT CHAIN.....	0131-2
GUIDE, BOOM LIFT CYLINDER.....	3165-2
GUIDE, ROD, BUCKET CYLINDER.....	3165-6
GUIDE, ROD, MULTI-PURPOSE BUCKET.....	3165-10
GUIDE, TRACK IDLER WHEEL.....	0134-2
GUIDES, TRACK.....	0138-4

H

HAND PUMP, OPERATOR STATION HYDRAULIC TILT.....	1812-10
HANDLE, AUXILIARY PILOT CONTROLLER, REAR.....	4215-2
HANDLE, LOADER BOOM.....	3143-2
HANDLE, RIPPER CONTROL LEVER.....	4215-2
HANDRAIL, LOADER BOOM.....	3143-2
HARNESS CLAMPS, CAB WIRING.....	1674-20
HARNESS ELECTRICAL CONNECTORS.....	1674-30
HARNESS ELECTRICAL CONNECTORS (PAGE 2).....	1674-32
HARNESS ELECTRICAL CONNECTORS (PAGE 3).....	1674-34
HARNESS ELECTRICAL CONNECTORS (PAGE 4).....	1674-36
HARNESS ELECTRICAL CONNECTORS (PAGE 5).....	1674-38
HARNESS ELECTRICAL CONNECTORS (PAGE 6).....	1674-40
HARNESS ELECTRICAL CONNECTORS (PAGE 7).....	1674-42
HARNESS ELECTRICAL CONNECTORS (PAGE 8).....	1674-44
HARNESS ELECTRICAL CONNECTORS (PAGE 9).....	1674-46
HARNESS-WIRING & INJECTION NOZZLE (16C7).....	0413-4
HARNESS, CAB WORK LIGHTS (OPTIONAL).....	1673-4
HARNESS, INSTRUMENT PANEL WIRING.....	1674-6
HARNESS, MAIN WIRING.....	1674-2
HARNESS, WIRING (8474) (PAGE 1 OF 2).....	0574-2
HEAD-CYLINDER (5120).....	0409-2
HEADLIGHTS, SWITCH.....	1674-10
HEADLINER, CAB.....	1810-12

ALPHABETICAL INDEX - CONTINUED

	PAGE		PAGE
HEADREST	1821-2	HOSES, HYDROSTATIC DRIVE HYDRAULIC	0363-4
HEAT EXCHANGERS, HOUSING (HEATER/AIR CONDITIONER)	1830-8	HOSES, HYDROSTATIC MOTOR TO CASE DRAIN FILTER MANIFOLD	0363-4
HEAT SHIELD, EXHAUST PIPE	0530-2	HOSES, HYDROSTATIC PUMP TO HYDROSTATIC MOTOR	0363-2
HEATER BLOCK	0404-4	HOSES, OPERATOR STATION HYDRAULIC TILT	1812-10
HEATER CLAMPS	1830-6	HOSES, PILOT CONTROLLER	3163-4
HEATER FITTINGS	1830-6	HOSES, PILOT/HYDRAULIC CONTROL VALVE	3163-4
HEATER HOSES	1830-6	HOSES, RADIATOR	0510-4
HEATER PLUMBING	1830-6	HOSES, SOLENOID VALVE TO MAIN HYDRAULIC CONTROL VALVE	3163-10
HEATER/AC COMPONENT PARTS	1830-8	HOSES, WINDSHIELD WASHER	1814-2
HIGH PRESSURE RELIEF VALVE, HYDROSTATIC PUMP	0360-4	HOUSING, INSTRUMENT PANEL	1674-6
HIGH PRESSURE, COMMON RAIL SYSTEM (16C7)	0413-2	HOUSING (CONTINUED), INNER FINAL DRIVE	0201-4
HINGE PIN, MULTI-PURPOSE BUCKET	3102-6	HOUSING (CONTINUED), OUTER FINAL DRIVE	0201-4
HINGE, ENGINE COMPARTMENT DOOR	1910-4	HOUSING-FLYWHEEL (1461)	0433-2
HINGE, INSTRUMENT PANEL	1816-2	HOUSING, HEAT EXCHANGERS (CAB HEATER/AIR CONDITIONER)	1830-8
HINGES, CAB DOOR	1810-6	HOUSING, INNER FINAL DRIVE	0201-2
HINGES, CAB DOOR	1810-8	HOUSING, INTERMEDIATE / OIL COOLER(5945)	0419-2
HINGES, HYDRAULIC OIL RESERVOIR	2164-6	HOUSING, OIL PUMP (5024)	0407-6
HOOD ISOLATOR, ENGINE COMPARTMENT	1910-4	HOUSING, OUTER FINAL DRIVE	0201-2
HOOD SEALING TRIM, ENGINE COMPARTMENT	1910-4	HOUSING, THERMOSTAT (3917)	0418-4
HOOD SUPPORT	1910-2	HYDRAULIC ACCUMULATOR	0360-8
HOOD, ENGINE COMPARTMENT	1910-2	HYDRAULIC CONTROL LEVER	3163-4
HOOD, ENGINE COMPARTMENT	1910-4	HYDRAULIC CONTROL LEVER, RIPPER	4215-2
HOSE CLAMPS, FINAL DRIVE	0201-12	HYDRAULIC CONTROL VALVE (COMPLETE)	2160-24
HOSE, COOLER BYPASS VALVE TO CHARGE PUMP	0363-6	HYDRAULIC CYLINDER COMPONENTS BOOM LIFT	3165-2
HOSE, HYDRAULIC RESERVOIR TO CHARGE PUMP	0363-6	HYDRAULIC CYLINDER COMPONENTS BUCKET CYLINDER	3165-6
HOSE, HYDRAULIC SUPPLY	2163-2	HYDRAULIC CYLINDER COMPONENTS, MULTI-PURPOSE BUCKET	3165-10
HOSE, HYDROSTATIC PUMP TO CASE DRAIN MANIFOLD	0363-2	HYDRAULIC CYLINDER, BOOM LIFT	3163-2
HOSE, HYDROSTATIC PUMP TO CHARGE OIL FILTER	0363-2	HYDRAULIC CYLINDER, BUCKET	3143-6
HOSE, HYDROSTATIC SOLENOID VALVE TO PILOT CONTROLLER	2163-6	HYDRAULIC CYLINDER, MULTI-PURPOSE	3102-6
HOSE, MAIN HYDRAULIC CONTROL VALVE TO HYDROSTATIC SOLENOID VALVE	2163-6	HYDRAULIC CYLINDER, THREE SHANK RIPPER (COMPLETE)	4201-4
HOSE, MAIN HYDRAULIC PUMP TO MAIN HYDRAULIC CONTROL VALVE	2163-6	HYDRAULIC DOZER CONTROL LABEL FORWARD, NEUTRAL, REVERSE	1322-2
HOSE, PRESSURE, SOLENOID VALVE TO HYDRAULIC MANIFOLD	3163-10	HYDRAULIC FAN DRIVE HOSE ROUTING	0510-10
HOSE, RETURN, SOLENOID VALVE TO RESERVOIR	3163-10	HYDRAULIC FAN DRIVE HOSES	0510-10
HOSES BETWEEN SOLENOID VALVES	3163-10	HYDRAULIC FAN DRIVE MOTOR	0510-8
HOSES, A/C CONDENSER	1833-6	HYDRAULIC FAN MOTOR	0510-4
HOSES, AIR CLEANER	0520-2	HYDRAULIC FLUID LABEL	1322-2
HOSES, BOOM LIFT CYLINDER	3163-2	HYDRAULIC HOSE CLAMPS	0201-12
HOSES, BUCKET PILOT/HYDRAULIC CONTROL VALVE	3163-4	HYDRAULIC HOSES (RIPPER CONTROL LEVER TO CONTROL VALVE)	4215-2
HOSES, CHARGE OIL FILTER TO HYDROSTATIC MOTOR	0363-4	HYDRAULIC HOSES, AUXILIARY PILOT CONTROLLER, REAR	4215-2
HOSES, CHARGE OIL PRESSURE REGULATING MANIFOLD	0363-6	HYDRAULIC HOSES, FINAL DRIVE	0201-12
HOSES, CHARGE PUMP	0363-6	HYDRAULIC HOSES, HYDROSTATIC DRIVE	0363-4
HOSES, ENGINE AIR INTAKE	0520-4	HYDRAULIC HOSES, RIPPER CONTROLS	4215-2
HOSES, EXPANSION TANK COOLER	0510-12	HYDRAULIC JOYSTICK CONTROL LABEL	1322-2
HOSES, FINAL DRIVE	0201-12	HYDRAULIC LINES FOR CONVERSION KIT, STD BUCKET TO MULTI-PURPOSE BUCKET	3163-12
HOSES, FRONT AND REAR AUXILIARY HYDRAULIC CONTROL	3163-6	HYDRAULIC LINES, FINAL DRIVE	0201-12
HOSES, FRONT AUXILIARY PILOT	3163-10	HYDRAULIC LINES, FRONT AUXILIARY	3163-14
HOSES, HEATER	1830-6	HYDRAULIC LINES, MULTI-PURPOSE BUCKET	3163-12
HOSES, HYDRAULIC (MULTI-PURPOSE BUCKET)	3163-12	HYDRAULIC OIL COOLER	0510-2
HOSES, HYDRAULIC (RIPPER CONTROL LEVER TO CONTROL VALVE)	4215-2	HYDRAULIC OIL FILTER	0360-14
HOSES, HYDRAULIC FAN DRIVE	0510-10	HYDRAULIC OIL RESERVOIR COVER	2164-6
HOSES, HYDRAULIC, RIPPER CONTROLS	4215-2	HYDRAULIC OIL RESERVOIR DOOR	2164-6
HOSES, HYDROSTATIC AND HYDRAULIC TEST PORT	0363-8	HYDRAULIC OIL RESERVOIR HINGE	2164-6
		HYDRAULIC OIL RESERVOIR KEY	2164-6
		HYDRAULIC OIL RESERVOIR MAT	2164-6

ALPHABETICAL INDEX - CONTINUED

	PAGE		PAGE
HYDRAULIC OIL RESERVOIR, RETURN FILTER, VALVES, AND FITTINGS	2164-2	HYDROSTATIC PUMP TO CHARGE OIL FILTER HOSE	0363-2
HYDRAULIC OIL RESERVOIR, RETURN FILTER, VALVES, AND FITTINGS	2164-4	HYDROSTATIC PUMP TO HYDROSTATIC MOTOR HOSES	0363-2
HYDRAULIC OIL RETURN FILTER	2164-2	HYDROSTATIC SOLENOID MANIFOLD	0360-8
HYDRAULIC OIL RETURN FILTER	2164-4	HYDROSTATIC SOLENOID VALVE TO PILOT CONTROLLER HOSE	2163-6
HYDRAULIC PUMP COUPLING, MAIN	2160-12	I	
HYDRAULIC PUMP CYLINDER BLOCK, MAIN	2160-10	IDLE GEARS (UPPER AND LOWER) (3612)	0401-2
HYDRAULIC PUMP DRIVE COUPLING, MAIN	2160-12	IDLER SHAFT, TRACK CHAIN	0134-2
HYDRAULIC PUMP DRIVE SHAFT, MAIN	2160-10	IDLER WHEEL YOKE	0134-2
HYDRAULIC PUMP FITTINGS, MAIN	2160-12	IDLER, TRACK CHAIN	0134-2
HYDRAULIC PUMP PISTONS, MAIN	2160-10	INJECTION NOZZLE & WIRING HARNESS (16C7)	0413-4
HYDRAULIC PUMP TO CONTROL VALVE HOSE	2163-2	INPUT GEAR (CONTINUED), FINAL DRIVE	0201-4
HYDRAULIC PUMP, MAIN	2160-8	INPUT GEAR, FINAL DRIVE	0201-2
HYDRAULIC RIPPER CONTROL LEVER	4215-2	INSTRUMENT PANEL (COMPONENT PARTS)	1816-2
HYDRAULIC RIPPER CONTROL LEVER HOSES	4215-2	INSTRUMENT PANEL BRACKET	1816-2
HYDRAULIC RIPPER JOYSTICK	4215-2	INSTRUMENT PANEL COVER, VANDAL	1816-2
HYDRAULIC SUPPLY HOSE	2163-2	INSTRUMENT PANEL GASKETS	1816-2
HYDRAULIC SYSTEM PRESSURE TEST PORT AND HOSE	0363-8	INSTRUMENT PANEL HINGE	1816-2
HYDROSTATIC CHARGE PUMP SEAL KIT	0360-18	INSTRUMENT PANEL MAIN WIRING HARNESS	1816-2
HYDROSTATIC CHARGE PUMP SEAL KIT	0360-20	INSTRUMENT PANEL PIN SOCKET	1816-2
HYDROSTATIC CHARGE PUMPS	0360-18	INSTRUMENT PANEL PLATE	1816-2
HYDROSTATIC CHARGE PUMPS	0360-20	INSTRUMENT PANEL PLUG	1816-2
HYDROSTATIC COOLER BYPASS VALVE	0360-16	INSTRUMENT PANEL SEALS	1816-2
HYDROSTATIC DRIVE HYDRAULIC HOSES	0363-4	INSTRUMENT PANEL SOCKET	1816-2
HYDROSTATIC DRIVE MOTOR COMPLETE	0360-26	INSTRUMENT PANEL WIRING HARNESS	1816-2
HYDROSTATIC DRIVE MOTOR COMPONENTS	0360-24	INSTRUMENT PANEL WIRING HARNESS AND GAUGES	1674-6
HYDROSTATIC DRIVE MOTOR FITTINGS	0360-26	INTAKE MANIFOLD (17BL)	0414-2
HYDROSTATIC DRIVE MOTOR PISTONS AND VALVES	0360-22	INTAKE VALVE (5120)	0409-2
HYDROSTATIC MOTOR CASE DRAIN FILTERS	0360-16	INTAKE WATER PUMP (5731)	0417-5
HYDROSTATIC MOTOR COVER	0360-24	INTERIOR PANELING, CAB	1810-12
HYDROSTATIC MOTOR CYLINDER BLOCK	0360-24	INTERMEDIATE HOUSING / OIL COOLER (5945)	0419-2
HYDROSTATIC MOTOR DRIVE SHAFT	0360-24	ISOLATOR, CAB WINDOW	1814-4
HYDROSTATIC MOTOR HOSES	0363-2	ISOLATOR, CROSSBAR	0135-4
HYDROSTATIC MOTOR HOUSING	0360-24	ISOLATOR, ENGINE COMPARTMENT HOOD	1910-4
HYDROSTATIC MOTOR PISTONS AND VALVES	0360-22	ISOLATOR, PLATFORM	1740-2
HYDROSTATIC MOTOR SPEED SENSOR	0201-4	ISOLATOR, RADIATOR	0510-2
HYDROSTATIC MOTOR TEST PORT HOSES AND TEST PORT FITTINGS	0363-8	ISOLATORS, CAB DOORS	1810-6
HYDROSTATIC MOTOR TO CASE DRAIN FILTER MANIFOLD HOSES	0363-4	ISOLATORS, ENGINE MOUNTING BRACKETS	0540-2
HYDROSTATIC OIL FILTER	0360-14	J	
HYDROSTATIC OIL TEMPERATURE SWITCH	0360-14	JAW COMPONENT PARTS, FRONT, MULTI-PURPOSE BUCKET	3102-10
HYDROSTATIC PUMP (COMPLETE)	0360-2	JAW, MULTI-PURPOSE BUCKET	3102-6
HYDROSTATIC PUMP BEARING	0360-4	JOYSTICK CONTROL LABEL	1322-2
HYDROSTATIC PUMP CASE DRAIN FILTERS	0360-16	JOYSTICK, RIPPER CONTROLS	4215-2
HYDROSTATIC PUMP CHARGE PRESSURE RELIEF VALVE	0360-4	JOYSTICK, RIPPER CONTROLS, HYDRAULIC HOSES	4215-2
HYDROSTATIC PUMP CONTROL PISTON/CYLINDER	0360-4	JUNCTION BLOCKS, HYDROSTATIC PUMPS	0363-2
HYDROSTATIC PUMP DISPLACEMENT CONTROL SOLENOID VALVE	0360-10	K	
HYDROSTATIC PUMP DISPLACEMENT CONTROL VALVE	0360-10	KEY, CAB SIDE COMPARTMENT DOOR	1913-4
HYDROSTATIC PUMP HIGH PRESSURE RELIEF VALVE	0360-4	KEY, CAB WINDOW WASHER FLUID RESERVOIR CAP	1814-2
HYDROSTATIC PUMP HOSES	0363-2	KEY, DOOR LATCH KIT	1310-2
HYDROSTATIC PUMP MANIFOLD	0360-4	KEY, HYDRAULIC OIL RESERVOIR	2164-6
HYDROSTATIC PUMP PINION SHAFT	0360-4	KEYS, ENGINE COMPARTMENT DOOR	1910-4
HYDROSTATIC PUMP PISTON	0360-4	KIT, DOOR LATCH KIT	1310-2
HYDROSTATIC PUMP SEAL KIT	0360-10		
HYDROSTATIC PUMP SERVO CONTROL	0360-6		
HYDROSTATIC PUMP SWASH PLATE	0360-4		
HYDROSTATIC PUMP TO CASE DRAIN MANIFOLD HOSE	0363-2		

ALPHABETICAL INDEX - CONTINUED

	PAGE		PAGE
KITS, MAIN HYDRAULIC CONTROL VALVE SEAL	2160-26	LINES-FUEL, HIGH PRESSURE (16C7).....	0413-2
		LINES-OIL, ADAPTER, OIL FILTER (8888).....	0407-7
L		LINES, FRONT AUXILIARY HYDRAULIC.....	3163-14
LABEL, ACCUMULATOR.....	1322-2	LINES, FUEL (63AX)	0420-6
LABEL, BYPASS START.....	1322-2	LINES, HYDRAULIC (MULTI-PURPOSE BUCKET)	3163-12
LABEL, CAB OVERHEAD CONSOLE.....	1674-10	LINES, HYDRAULIC FAN DRIVE	0510-10
LABEL, CHAIN TENSION CAUTION.....	1322-2	LINES, OPERATOR STATION HYDRAULIC TILT	1812-10
LABEL, CIRCUIT BREAKER.....	1322-2	LINES,OIL AND TURBOCHARGER (65TC).....	0416-2
LABEL, DECELERATOR	1322-2	LINK, TRACK CHAIN.....	0132-2
LABEL, DEERE FRONT GRILLE	1322-2	LINK, TRACK CHAIN MASTER	0132-2
LABEL, DIESEL FUEL ONLY.....	1322-2	LINKAGE, LOADER BUCKET	3143-2
LABEL, ENGINE SPEED.....	1322-2	LINKS, LOADER BOOM	3143-4
LABEL, ENGINE START AND STOP PROCEDURE.....	1322-2	LOAD CENTER CIRCUIT BOARD	1674-12
LABEL, FUSE BLOCK.....	1322-2	LOAD CENTER COVER.....	1674-14
LABEL, GROUND DISCONNECT SWITCH.....	1322-2	LOAD CENTER MOUNTING	1674-16
LABEL, HYDRAULIC DOZER CONTROL FORWARD, NEUTRAL, REVERSE	1322-2	LOAD SENSE PRESSURE TEST PORT AND HOSE.....	0363-8
LABEL, HYDRAULIC FLUID.....	1322-2	LOADER BOOM AND LINKS.....	3143-4
LABEL, HYDRAULIC JOYSTICK CONTROL	1322-2	LOADER BUCKET LINKAGE AND PINS	3143-2
LABEL, JOYSTICK CONTROL.....	1322-2	LOADER CONTROL VALVE HOSES	2163-4
LABEL, LEAPING DEERE.....	1322-2	LOCK, BOOM LIFT CYLINDER.....	3165-18
LABEL, LIFT HOOK.....	1322-2	LOCK, CAB SIDE COMPARTMENT DOOR	1913-4
LABEL, LIFT HOOK.....	1749-2	LOCK, ENGINE COMPARTMENT DOOR	1910-4
LABEL, LIFT HOOK.....	4201-4		
LABEL, PARK BRAKE SWITCH.....	1322-2	M	
LABEL, PARK LOCK, CAUTION, OPERATING.....	1322-2	MAIN FRAME ACCESS COVERS	1913-2
LABEL, PEDAL STEERING.....	1322-2	MAIN HYDRAULIC CONTROL VALVE	2160-26
LABEL, PERIODIC MAINTENANCE	1322-2	MAIN HYDRAULIC CONTROL VALVE	2160-28
LABEL, RADIATOR CAP	1322-2	MAIN HYDRAULIC CONTROL VALVE (COMPLETE)	2160-24
LABEL, REAR DEERE	1322-2	MAIN HYDRAULIC CONTROL VALVE HOSES.....	2163-6
LABEL, ROPS CERTIFICATION.....	1322-2	MAIN HYDRAULIC CONTROL VALVE SEAL KITS	2160-26
LABEL, SEAT BELT	1322-2	MAIN HYDRAULIC CONTROL VALVE SOLENOIDS	2160-28
LABEL, TIE DOWN POINT.....	1322-2	MAIN HYDRAULIC CONTROL VALVE SPOOL BLADE LIFT AND BLADE TILT	2160-26
LABEL, TILT LOCK.....	1322-2	MAIN HYDRAULIC CONTROL VALVE SYSTEM RELIEF.....	2160-28
LABEL, TRACK ADJUSTER.....	1322-2	MAIN HYDRAULIC CONTROL VALVE TO HYDROSTATIC SOLENOID VALVE HOSE	2163-6
LABEL, TWELVE VOLT.....	1674-4	MAIN HYDRAULIC CONTROL VALVE TO PILOT CONTROLLER HOSE.....	2163-6
LABEL, WINDSHIELD WASHER.....	1322-2	MAIN HYDRAULIC PUMP AND REGULATOR ASSEMBLY.....	2160-8
LABEL, 755D	1322-2	MAIN HYDRAULIC PUMP COUPLING	2160-12
LABELS (FRENCH)	1322-6	MAIN HYDRAULIC PUMP DRIVE COUPLER AND MOUNTING FLANGE.....	2160-12
LABELS (SPANISH).....	1322-4	MAIN HYDRAULIC PUMP DRIVE COUPLING	2160-12
LABELS AND DECALS	1322-2	MAIN HYDRAULIC PUMP DRIVE SHAFT	2160-10
LAMPS, CAB WORK LIGHTS (OPTIONAL)	1673-4	MAIN HYDRAULIC PUMP DRIVE SHAFT OIL SEAL	2160-10
LATCH, CAB DOOR	1810-4	MAIN HYDRAULIC PUMP FITTINGS.....	2160-12
LATCH, STORAGE COMPARTMENT.....	1740-4	MAIN HYDRAULIC PUMP HOSES.....	2163-2
LEAPING DEERE LABEL.....	1322-2	MAIN HYDRAULIC PUMP MOUNTING FLANGE	2160-12
LEFT FOOTBOARD.....	1740-4	MAIN HYDRAULIC PUMP PISTONS.....	2160-10
LEFT TRAVEL FORWARD HIGH PRESSURE TEST PORT AND HOSE.....	0363-8	MAIN HYDRAULIC PUMP TO MAIN HYDRAULIC CONTROL VALVE HOSE.....	2163-6
LEFT TRAVEL REVERSE HIGH PRESSURE TEST PORT AND HOSE.....	0363-8	MAIN HYDRAULIC SHUTOFF VALVE	2164-2
LEVER HANDLE, RIPPER CONTROL.....	4215-2	MAIN HYDRAULIC SHUTOFF VALVE	2164-4
LEVER, OPERATOR STATION HYDRAULIC TILT	1812-10	MAIN INSTRUMENT PANEL WIRING HARNESS.....	1816-2
LEVER, PILOT CONTROL	3163-4	MAIN VEHICLE WIRING HARNESS	1816-2
LEVER, RIPPER HYDRAULIC CONTROL.....	4215-2	MAIN WIRING HARNESS	1674-2
LIFT CYLINDER LOCK SUPPORT, BOOM.....	3165-18	MAIN WIRING HARNESS	1816-2
LIFT CYLINDER, BOOM, (COMPONENTS)	3165-2	MAIN WIRING HARNESS CLAMPS.....	1674-22
LIFT HOOK LABEL.....	1322-2	MAIN WIRING HARNESS CLAMPS.....	1674-24
LIFT HOOK LABEL.....	1749-2	MAINFRAME TO UNDERCARRIAGE BEARING	0135-2
LIGHT BULB, STANDARD CAB.....	1673-2	MANIFOLD-INTAKE (17BL).....	0414-2
LIGHT, INSTRUMENT PANEL GAUGES	1674-6		
LIGHTS, CAB WORK LIGHTS (OPTIONAL)	1673-4		
LIGHTS, STANDARD CAB.....	1673-2		
LIGHTS, SWITCH.....	1674-10		
LINE, OIL, BUCKET CYLINDER	3143-6		
LINER-CYLINDER (4834).....	0403-2		

000I-18

755D CRAWLER LOADER

ALPHABETICAL INDEX - CONTINUED

PAGE	PAGE		
MANIFOLD, CASE DRAIN.....	0360-16	OIL LINES, ADAPTER, OIL FILTER (8880).....	0407-7
MANIFOLD, CHARGE OIL PRESSURE.....	0360-12	OIL LINES, BOOM LIFT CYLINDER.....	3163-2
MANIFOLD, EXHAUST (2873).....	0410-2	OIL PAN (19AD).....	0407-2
MANIFOLD, HYDROSTATIC PUMP.....	0360-4	OIL PUMP (5024).....	0407-6
MANIFOLD, HYDROSTATIC SOLENOID.....	0360-8	OIL SEAL, MAIN HYDRAULIC PUMP DRIVE	
MARKER, REFLECTIVE.....	1322-2	SHAFT.....	2160-10
MASTER LINK, TRACK CHAIN.....	0132-2	OPERATOR SEAT, AIR SUSPENSION.....	1821-4
MASTER SHOE, TRACK CHAIN.....	0132-2	OPERATOR SEAT, MECHANICAL SUSPENSION.....	1821-6
MAT, FLOOR.....	1812-8	OPERATOR STATION HYDRAULIC TILT.....	1812-10
MAT, HYDRAULIC OIL RESERVOIR.....	2164-6	OPERATOR STATION HYDRAULIC TILT	
MECHANICAL SUSPENSION SEAT COMPONENTS.....	1821-6	PLUMBING.....	1812-10
MIRROR, REARVIEW.....	1810-10	OPERATOR'S SEAT.....	1821-2
MIRRORS, REAR VIEW.....	2002-2	OPERATOR'S SEAT AIR RIDE WIRING HARNESS.....	1821-2
MIRRORS, SIDE.....	2002-2	OPERATOR'S SEAT ARM REST.....	1821-2
MOTOR COVER, HYDROSTATIC.....	0360-24	OPTION 35DZ FINAL FUEL FILTER.....	0420-2
MOTOR DRIVE SHAFT, HYDROSTATIC.....	0360-24	OPTION 4343 STARTING AID.....	0578-6
MOTOR, HYDRAULIC FAN DRIVE.....	0510-8	OPTION 5024 OIL PUMP.....	0407-6
MOTOR, HYDROSTATIC.....	0360-24	OPTION 6266 ALTERNATOR BRACKETS	
MOTOR, HYDROSTATIC DRIVE (COMPLETE).....	0360-26	(HT061).....	0423-2
MOTOR, WINDSHIELD WIPER.....	1814-2	OPTION 6731 ENGINE SENSORS (HTJ85).....	0578-2
MOUNTING BRACKET, EXPANSION TANK COOLER.....	0510-12	OPTION 7424 AIR CONDITIONING COMPRESSOR	
MOUNTING BRACKET, FOOT PEDAL STEERING.....	0962-2	(HTJ85).....	1830-2
MOUNTING FLANGE, MAIN HYDRAULIC PUMP.....	2160-12	OPTION 8474-WIRING HARNESS (PAGE 1 OF 2).....	0574-2
MOUNTING HARDWARE, A/C CONDENSER.....	1833-4	OPTION 8724 BELT TENSIONER.....	0429-2
MOUNTING HARDWARE, GRILLE.....	1921-2	OPTION 8901 EGR.....	0414-4
MOUNTING HARDWARE, GRILLE.....	1921-4	OPTIONAL CAB WORK LIGHTS, WIRING,	
MOUNTING PLATE, FOOT PEDAL STEERING.....	0962-2	RELAYS, AND SWITCHES.....	1673-4
MOUNTING, LOAD CENTER.....	1674-16	OUTER HOUSING (CONTINUED), FINAL DRIVE.....	0201-4
MUFFLER.....	0530-2	OUTER HOUSING FINAL DRIVE.....	0201-2
MUFFLER EXHAUST PIPE.....	0530-2	OUTER HOUSING FINAL DRIVE (CONTINUED).....	0201-4
MUFFLER EXHAUST PIPE GASKET.....	0530-2	OUTER HOUSING, FINAL DRIVE.....	0201-2
MULTI-PURPOSE BUCKET BLADE.....	3102-6	OVERHEAD CONSOLE, CAB.....	1674-10
MULTI-PURPOSE BUCKET COMPONENTS.....	3102-6	OVERSPEED RETARDER SOLENOID VALVE,	
MULTI-PURPOSE BUCKET CONVERSION KIT,		ENGINE.....	2160-8
COMPLETE, (FOUR IN ONE).....	3102-6		
MULTI-PURPOSE BUCKET CUTTING EDGES.....	3102-12		
MULTI-PURPOSE BUCKET CYLINDER COMPONENTS.....	3165-10	P	
MULTI-PURPOSE BUCKET CYLINDER GUARDS.....	3102-14	PAN OIL (19AD).....	0407-2
MULTI-PURPOSE BUCKET FRONT JAW COMPONENT		PANEL COMPONENT PARTS, INSTRUMENT.....	1816-2
PARTS.....	3102-10	PANELING - INTERIOR CAB.....	1810-12
MULTI-PURPOSE BUCKET HYDRAULIC LINES.....	3163-12	PANELS, NOISE REDUCTION.....	1807-2
MULTI-PURPOSE BUCKET JAW.....	3102-6	PARK BRAKE HOSES.....	0363-4
MULTIFUNCTION VALVE, HYDROSTATIC PUMP		PARK BRAKE INDICATOR LIGHT PRESSURE	
MANIFOLD.....	0360-4	SWITCH.....	0360-8
		PARK BRAKE LEVER.....	1812-4
N		PARK BRAKE SOLENOID VALVE.....	0360-8
NECK, OIL FILLER (1201).....	0407-4	PARK BRAKE SPRING RETAINER.....	0201-2
NEUTRAL CHARGE OIL PRESSURE REGULATING		PARK BRAKE SPRING RETAINER (CONTINUED).....	0201-4
VALVE.....	0360-12	PARK BRAKE SWITCH LABEL.....	1322-2
NOISE REDUCTION PANELS.....	1807-2	PARK LOCK CAUTION, OPERATING LABEL.....	1322-2
NOZZLE-INJECTION & WIRING HARNESS (16C7).....	0413-4	PARK LOCK LEVER SWITCH.....	1812-4
		PEDAL COVERS, BRAKE.....	1011-4
O		PEDAL STEERING LABEL.....	1322-2
OIL COOLER / INTERMEDIATE HOUSING (5945).....	0419-2	PEDAL STEERING POTENTIOMETER ASSEMBLY	
OIL DIPSTICK (4002).....	0407-5	AND HARDWARE.....	0962-2
OIL DRAIN HOSE.....	2005-2	PEDAL, BRAKE AND COMPONENT PARTS.....	1011-2
OIL FILLER NECK (1201).....	0407-4	PILOT CONTROL LEVER.....	3163-4
OIL FILLER NECK GASKET (1201).....	0407-4	PILOT CONTROLLER.....	3163-4
OIL FILLER NECK, COVER (1201).....	0407-4	PILOT CONTROLLER AND HYDRAULIC HOSES	
OIL FILTER, ADAPTER, OIL LINES (8880).....	0407-7	AUXILIARY, REAR.....	4215-2
OIL FILTER, HYDROSTATIC.....	0360-14	PILOT CONTROLLER FITTINGS.....	3162-2
OIL LINE, BUCKET CYLINDER.....	3143-6	PILOT CONTROLLER GUARDS.....	3163-4
OIL LINES AND TURBOCHARGER (65TC).....	0416-2	PILOT CONTROLLER HOSES.....	2163-6
		PILOT CONTROLLER HOSES.....	3163-4
		PILOT CONTROLLER, BUCKET.....	3162-2
		PILOT CONTROLLER, COMPLETE.....	3162-2