

450J/550J/650J CRAWLER



JOHN DEERE

PARTS CATALOG

450J/550J/650J CRAWLER

PC9387 (Mar-07) English

Worldwide Construction and Forestry Division

Worldwide Edition
Litho in U.S.A. (Revised)
COPYRIGHT © 2007
DEERE & COMPANY
Moline, Illinois
All rights reserved

000I-1

450J/550J/650J CRAWLER

INTRODUCTION AND CUSTOMER INFORMATION

T199713A

-UN-05MAY04



*RIGHT SIDE VIEW OF 650J CRAWLER
(MANUFACTURED 2004-)*

TO THE CUSTOMER

THE PART NUMBERS IN THIS PARTS CATALOG WERE CORRECT AT THE TIME THIS CATALOG WAS PUBLISHED. IT IS OUR POLICY TO CONSTANTLY IMPROVE OUR MACHINES AND, THEREFORE, PART NUMBERS MAY CHANGE. WHEN ORDERING PARTS, VERIFY PART NUMBERS THROUGH YOUR DEALER.

(SPECIFICATIONS AND DESIGN SUBJECT TO CHANGE WITHOUT NOTICE.)

SERIAL NUMBER LOCATION

EACH 450J,550J OR 650J CRAWLER MAY HAVE SEVEN SERIAL NUMBERS. ONE FOR THE PRODUCT IDENTIFICATION NUMBER, ONE FOR THE ENGINE, ONE FOR THE L.H. TRACK DRIVE MOTOR, ONE FOR THE R.H. TRACK DRIVE MOTOR, ONE FOR THE HYDROSTATIC FRONT PUMP, ONE FOR THE HYDROSTATIC REAR PUMP AND ONE FOR THE MICRO COMPUTER.

THE PRODUCT IDENTIFICATION NUMBER IS LOCATED ON THE LEFT-HAND SIDE OF THE CRAWLER FRAME BELOW THE OPERATORS STATION

THE ENGINE SERIAL NUMBER PLATE IS LOCATED ON THE RIGHT-HAND SIDE OF THE CYLINDER BLOCK.

THE TRACK DRIVE MOTOR SERIAL NUMBER PLATE IS LOCATED ON THE END CAP OF THE DRIVE MOTOR.

THE FRONT HYDROSTATIC PUMP SERIAL NUMBER PLATE IS LOCATED ON THE PUMP HOUSING.

THE REAR HYDROSTATIC PUMP SERIAL NUMBER PLATE IS LOCATED ON THE PUMP HOUSING.

THE MICRO-COMPUTER SERIAL NUMBER PLATE IS LOCATED ON THE BOTTOM OF THE COMPUTER. LEFT SIDE AND RIGHT SIDE, FRONT AND REAR OF THE CRAWLER ARE VIEWED BY FACING IN THE DIRECTION OF THE CRAWLER FORWARD TRAVEL.

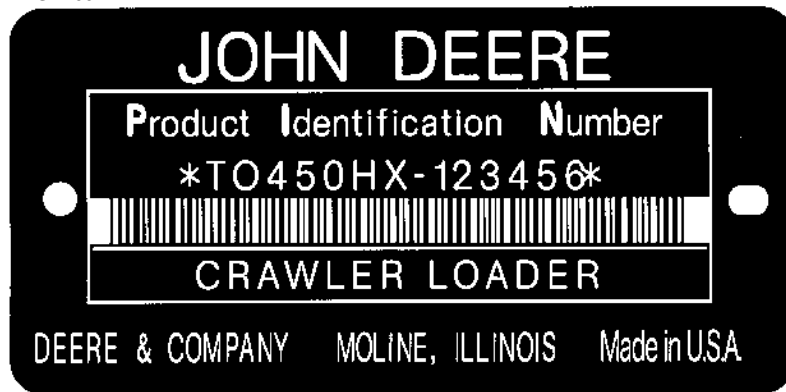
000I-3

450J/550J/650J CRAWLER

PRODUCT IDENTIFICATION NUMBER (450J)

TP62040

-UN-14SEP99



TP62040

1. DESIGNATES CRAWLER MANUFACTURER
2. DESIGNATES CRAWLER MODEL
3. DESIGNATES CRAWLER SERIAL NUMBER
4. DESIGNATES UNIT TYPE

TO - JOHN DEERE DUBUQUE WORKS
450JX
123456 (EXAMPLE)
CRAWLER

000I-4

450J/550J/650J CRAWLER

ENGINE SERIAL NUMBER PLATE (450J,550J AND 650J CRAWLER)

T134833 -UN-23OCT00



T134833

FIRST LINE

DEFINES

PE - JOHN DEERE TORREON

DESIGNATES ENGINE MANUFACTURER.

4

DESIGNATES NUMBER OF CYLINDERS.

4.5

DESIGNATES LITER DISPLACEMENT.

H - TURBOCHARGED DIESEL WITH INTERCOOLER

DESIGNATES TY

T - TURBOCHARGED

T - (JOHN DEERE DUBUQUE WORKS)

DESIGNATES VEHICLE APPLICATION

123456

DESIGNATES ENGINE SERIAL NUMBER.

SECOND LINE

APPLICATION

PE4045TT090

450JX/550JX

PE4045HT050

650JX (STD)

PE4045HT051

650JX (FIREPLOW)

SERIAL NUMBER LISTING INFORMATION

SERIAL NUMBER INFORMATION IS LISTED TO SHOW ON WHICH MACHINES EACH PART CAN BE USED; FOR EXAMPLE:

- THE PART CAN BE USED ON ALL MACHINES.
- 000000- THE PART CAN BE USED ON ALL MACHINES BEGINNING WITH THE SERIAL NUMBER LISTED.
- 000000 THE PART CAN BE USED ON ALL MACHINES UP TO AND INCLUDING THE SERIAL NUMBER LISTED.
- 000000-000000 THE PART CAN BE USED ON ALL MACHINES BETWEEN AND INCLUDING THE SERIAL NUMBERS LISTED.

WHEN XXXXXX'S ARE LISTED IN PLACE OF A SERIAL NUMBER, A SERIAL NUMBER CHANGE WAS MADE BUT THE EXACT SERIAL NUMBER WAS NOT AVAILABLE WHEN THE CATALOG WAS PRODUCED.

DIRECTION ARROW

ARROWS ARE USED WITH ILLUSTRATIONS TO INDICATE THE FRONT OF THE UNIT. "RIGHT-HAND" AND "LEFT-HAND" SIDES ARE DETERMINED BY FACING IN THE DIRECTION OF MACHINE FORWARD TRAVEL.

BOX-ENCLOSED ILLUSTRATIONS

A KEY NUMBER, SHOWN IN THE PARTS LIST, IS ASSIGNED TO A BOX ENCLOSING ALL PARTS SOLD AS A SERVICE ASSEMBLY.

COMPLETE GOODS LISTINGS

COMPLETE GOODS ARE LISTED IN BOLD FACE TYPE. ORDER SEPARATELY. DO NOT INCLUDE ON REPLACEMENT PARTS ORDER.

SI UNITS OF MEASURE

METRIC DIMENSIONS ARE GIVEN, WHERE APPLICABLE, THROUGHOUT THIS PARTS CATALOG.

CHANGE INDICATOR LINE

CHANGES AFFECTING THE ORDERING OF PARTS ARE IDENTIFIED BY VERTICAL LINES MARKED IN THE LEFT-HAND MARGIN OF REVISED PARTS LISTING IMAGES. A LINE IS ALSO AT THE LEFT-HAND EDGE OF THE SAME PART NUMBER IN THE NUMERICAL INDEX TO SHOW THE LOCATION OF REVISED INFORMATION.

REMARKS AND ABBREVIATIONS

THE FOLLOWING REMARKS AND ABBREVIATIONS MAY APPEAR THROUGHOUT THE PARTS CATALOG. REFER TO THE FOLLOWING CHART FOR TRANSLATIONS TO LANGUAGES OTHER THAN ENGLISH.

REMARKS AND ABBREVIATIONS

TX1007193

-UN-04MAY06

| PHRASE | ENGLISH | FRANCAIS | DEUTSCH | ITALIANO | ESPAÑOL | SVENSKA |
|------------------------------|--------------------------------|---|--|--|-------------------------------|--|
| ALSO ORDER, ORD W/ | Also order | Commander aussi | Ebenso bestellen | Ordinare anche | Pedir también | Beställ även |
| AMP | Ampere | Ampère | Ampere | Ampere | Amperio | Ampere |
| APPL, APPL ONLY | This application only | Uniquement pour cette utilisation | Nur für diese Anwendung | Solo per questa applicazione | Solo para este propósito | Endast för denna användning |
| AR | As required | Selon le besoin | Nach Bedarf | Secondo necessità | Según necesidad | Vid behov |
| ASSY | Complete assembly | Ensemble complet | Kompl.-Zusammenbau | Gruppo completo | Montaje completo | Komplett montering |
| CA, CONVENIENCE ASSY | Convenience assembly | Ensemble convenance | Komfort-Zusammenbau | Montaggio pratico | Montaje de conveniencia | Lämplig montering |
| CCW | Counter-clockwise | Sens anti-horaire | Gegen Uhrzeigersinn | Senso antiorario | A la izquierda | Moturs |
| COMPLETE | Complete | Complet | Vollständig | Completo | Completo | Fullständig |
| COMPLETE GOODS | Complete goods | Compléter marchandises | Vollst. Waren | Merci complete | Mercancías completas | Kompleta varor |
| CTL CUT TO LENGTH | Cut to length | Couper à la longueur | Auf Länge zurechtschneiden | Tagliare alla lunghezza | Corte a la longitud | Skära till längd |
| CW | Clockwise | Sens horaire | Im Uhrzeigersinn | In senso orario | A la derecha | Medurs |
| FOR | For | Pour | Für | Per | Para | För |
| FRONT | Front | Avant | Vorn | Anteriore | Frente | Fram |
| GAS | Gasoline | Essence | Benzin | Benzina | Gasolina | Bensin |
| HP | Horsepower | Puissance en cv | Leistung | Potenza | Potencia | Hästkraft |
| HFWD | Hydraulic Front-wheel Drive | Traction Avant Hydraulique | Hydraulischer Vorderradantrieb | Trazione Anteriore Idraulica | Tracción Delantera Hidraulica | Hydraulisk Framhjulsdrift |
| HS, HEAD MARKED | High strength, head marked | Haute résistance, tête marquée | Hochfest, vorn gekennzeichnet | Contrassegnato in testa, ad alta resistenza | Alta fuerza, marca en cabeza | Hög styrka, huvudmärkt |
| ID | Inside diameter | Diamètre intérieur | Innendurchmesser | Diametro interno | Diá. interior | Innerdiameter |
| INCH | Inch | Pouce | In. | Pollice | Pulg. | Tum |
| INCL KEYS | Includes keys... | Comprend les positions... | Einschließlich Schlüssel... | Include le chiavette... | Incluye posiciones... | Inklusive nycklar... |
| INCL, INCLUDES | Includes... | Comprend... | Enthält... | Include... | Incluye... | Inkluderar... |
| INCLUDES PARTS/ ITEMS MARKED | Includes parts/items marked... | Comprend les pièces/articles marqués... | Enthält gekennzeichnete Teile/Pos. ... | Include i pezzi e gli elementi contrassegnati... | Incluye piezas marcadas... | Inkluderar markerade delar/artiklar... |
| INNER | Inner | Intérieur | Innerer | Interno | Interno | Inre, invändig |
| KIT | Kit | Kit | Kit | Kit | Juego | Sats |
| L | Number of links | Nombre de maillons | Anzahl der Glieder | Numero di maglie | Nº de eslabones | Antal länkar |
| LGTH | Length | Longueur | Länge | Lunghezza | Longitud | Längd |
| LGP | Low Ground Pressure | Faible Pression Au Sol | Niederer Bodendruck | Bassa Pressione Sul Suelo | Baja Presion Sobre El Suelo | Laagt Marktryck |
| LH | Left-hand | Gauche | Links | Sinistra | Izquierda | Vänster |
| LT | Long Track | Chenille Longue | Mit Langem Laufwerk | Cingolo Lungo | Cadena Largo | Laangt Larvband |
| LOW, LOWER | Lower | Inférieur | Unterer | Inferiore | Inferior | Nedre |
| MAKE FROM, MF MARKED | Make from Marked | Faireavec Marqué | Herstellen von Markiert | Fabbricare da Contrassegnato | Hacer de Marcado | Tillverka av Märkt |

TX1007193

REMARKS AND ABBREVIATIONS

TX1007195

-UN-04MAY06

| PHRASE | ENGLISH | FRANCAIS | DEUTSCH | ITALIANO | ESPAÑOL | SVENSKA |
|------------------------|--|---|--|---|--|--|
| MATCHED SET | Matched set | Ensemble assorti | Passender Satz | Set abbinato | Sistema emparejado | Anpassad sats |
| MFWD | Mechanical Front-Wheel Drive | Pont Avant | Allradantrieb | Ruota Motrice Meccanica Anteriore | Traccion Delantera Mecanica | Mekanisk Framhjulsdrift |
| NA, NOT USED THIS APPL | Not used this application | Ne sert pas pour cette application | In dieser Anwendung nicht benutzt | Non usato in questa applicazione | No se usa en esta aplicación | Ej använd i detta sammanhang |
| NLA | No longer available | Epuisé | Nicht mehr lieferbar | Non più disponibile | Descontinuado | Ej längre tillgänglig |
| NSEP | Not supplied separately | Non livré séparément | Nicht einzeln lieferbar | Non fornito separatamente | No se suministra por separado | Kan ej erhållas separat |
| OD | Outside diameter | Diamètre extérieur | Außendurchmesser | Diametro esterno | Diá. exterior | Ytterdiameter |
| OPTIONAL | Optional | En option | Wahlweise | Opzionale | Opcional | Valfri |
| OR | Or | Ou | Oder | Oppure | O | Eller |
| ORD, ORDER | Order | Commander | Bestellen | Ordinare | Pídase | Order |
| OS | Oversize | Sur-dimension | Übergröße | Maggiorato | Sobretamaño | Överdimension |
| OUTER | Outer | Externe | Äußerer | Esterno | Externo | Yttre, utvändigt |
| PKG, PACKG | Package, Packet of | Emballage, paquet de | Verpackung, verpackt mit | In confezione da | Paquete de | I sats; paket |
| PTO | Power Take Off | Prise De Force | Zapfwelle | Presa Di Forza | Toma De Fuerza | Kraftuttag |
| RATIO | Ratio | Rapport | Übersetzungs-verhältnis | Rapporto | Índice | Förhållande |
| REAR | Rear | Arrière | Hinten | Posteriore | Trasero | Bak; bakre |
| REMAN | Remanufactured | Echange Standard | Generalveberholt | Refatto | Refabricador por | Renoverad |
| REPL | Replaces | Remplace | Ersetzt | Sostituisce | Sustituye | Ersätter |
| RH | Right-hand | Droit | Rechts | Destra | Derecha | Höger |
| SN | Serial number | Numéro de série | Seriennummer | Numero di serie | Nº de serie | Seriennummer |
| STD | Standard | Standard | Standard | Standard | Normal | Standard |
| SUB | Replaced by | Remplacé par | Ersetzt durch | Sostituito da | Sustituido por | Ersatt med |
| SUB COMPONENTS | Substitute components (of the kit or assy) | Substituer les composants (du kit ou de l'ensemble) | Komponenten ersetzen (des Kits oder der Baugruppe) | Sostituire i componenti (del kito del gruppo) | Sustituir los componentes | Ersätta komponenterna (i satsen eller monteringen) |
| SUB FOR | Substitutes for | Remplace | Ersatz für | Sostituisce | Sustitución para | Ersätter |
| TEETH, Z | Number of gear teeth | Nombre de dents d'engrenages | Zahl der Zahnradzähne | Numero di denti dell'ingranaggio | Nº de dientes de engranaje | Antal redskapständer |
| TK | Thickness | Épaisseur | Stärke | Spessore | Espesor | Tjocklek |
| UP, UPPER | Upper | Supérieur | Oberer | Superiore | Superior | Övre |
| US | Undersize | Sous-dimension | Untergröße | Minorato | Subtamaño | Underdimension |
| USE WITH | Use with | À utiliser avec | Verwenden mit | Usare con | Usar con | Använd med |
| USE UNTIL EXHAUSTED | Use until exhausted | Utilisation jusqu'à épuisé | Verwenden, bis erschöpft | Usare fino all'esaurimento | Usar hasta agotar | Använda till uttömd |
| W/ | With | Avec | Mit | Con | Con | Med; inklusive |
| W/O | Without | Sans | Ohne | Senza | Sin | Utan; exklusive |
| WHOLE GOODS | Whole goods | Marchandises entières | Vollständige Waren | Merci intere | Mercancías enteras | Hela varor |
| XLT | Extra Long Track | Chenille Extra Longue | Mit Extra Langem Laufwerk | Cingolo Extra Lungo | Cadena Extra Larga | Extra Laangt Larvband |
| VEC | Vehicle Electronic Controller | Controlleur Electronique Du Vehicule | Elektronisches Steuergeraet Des Fahrzeugs | Unità Di Comando Elettronica Del Veicolo | Unidad de Control Electronico del Vehiculo | Elektronisk Fordonsstyrenhet |
| VLC | Vehicle Load Center | Coffret De Repartition Du Vehicule | Verteilerstation Des Fahrzeugs | Centro Di Carico Del Veicolo | Centro De Cargas Del Vehiculo | Fordonets Elcentral |

TX1007195

ALPHABETICAL INDEX

| | PAGE | | PAGE |
|---|---------|--|---------|
| A | | | |
| A/C COMPRESSOR HARDWARE KIT | 1832-10 | AIR CONDITIONER SIDE COVER PLATE (S/N'S XXXXXX-) | 1810-7A |
| A/C COMPRESSOR SHAFT SEAL KIT | 1832-9 | AIR CONDITIONER SIDE COVER PLATE (S/N'S XXXXXX-) | 1810-7C |
| A/C KIT, COMPRESSOR HARDWARE | 1832-10 | AIR CONDITIONER SIDE COVER PLATE (S/N'S XXXXXX-) | 1810-7E |
| ACCESS COVER OIL | 1741-2 | AIR CONDITIONER SIDE COVER PLATE (S/N'S XXXXXX-) | 1810-7G |
| ACCESS COVER, INJECTION PUMP GEAR | 0402-4 | AIR CONDITIONING CHARGE FITTING | 1832-4 |
| ACCESS COVER, REAR | 1741-2 | AIR CONDITIONING COMPRESSOR | 1832-6 |
| ACCESS PLATE, CAB FRONT | 1810-8 | AIR CONDITIONING COMPRESSOR | 1832-8 |
| ACCESSORY, POWER | 2006-2 | AIR CONDITIONING COMPRESSOR BELTS | 1832-6 |
| ACTUATOR KIT, SEAT SUSPENSION (DELUXE) | 1821-20 | AIR CONDITIONING COMPRESSOR BRACKETS | 1832-6 |
| ADAPTER PLATE, MONITOR WITH 650J INTEGRATED GRADE CONTROL | 1676-3A | AIR CONDITIONING COMPRESSOR MANIFOLD | 1832-8 |
| ADAPTER, ENGINE OIL COOLER | 0419-2 | AIR CONDITIONING COMPRESSOR PULLEY | 1832-6 |
| ADAPTER, HYDROSTATIC FILTER | 0355-2 | AIR CONDITIONING CONDENSER FAN | 1832-2 |
| ADAPTER, ENGINE OIL FILLER | 0402-3 | AIR CONDITIONING CONDENSER WIRING HARNES | 1832-2 |
| ADJUSTABLE PITCH, C-FRAME | 3243-2 | AIR CONDITIONING CORE CONDENSER | 1832-2 |
| ADJUSTER, TRACK | 0133-4 | AIR CONDITIONING FIELD KIT(HIGH AND LOW PRESSURE REFRIGERANT HOSES) | 1832-4 |
| ADJUSTER, TRACK CHAIN TENSION | 0133-4 | AIR CONDITIONING HOUSING FIELD KIT | 1832-2 |
| ADJUSTING STRAP, ALTERNATOR | 0423-2 | AIR CONDITIONING LOW AND HIGH PRESSURE SWITCH | 1832-2 |
| AIR CLEANER CLEAN OUT VALVE (550J AND 650J) | 0521-6 | AIR CONDITIONING PLUMBING GUARD (S/N'S -XXXXXX) | 1810-4 |
| AIR CLEANER CLEAN OUT VALVE(450J) | 0521-2 | AIR CONDITIONING PLUMBING GUARD (S/N'S XXXXXX-) | 1810-7A |
| AIR CLEANER COVER (550J AND 650J) | 0521-6 | AIR CONDITIONING PLUMBING GUARD (S/N'S XXXXXX-) | 1810-7E |
| AIR CLEANER COVER(450J) | 0521-2 | AIR CONDITIONING PLUMBING GUARD (S/N'S -XXXXXX) | 1810-6 |
| AIR CLEANER FILTER ELEMENT WITH(450J) TURBOCHARGER | 0521-2 | AIR CONDITIONING PLUMBING GUARD (S/N'S XXXXXX-) | 1810-7C |
| AIR CLEANER FILTER W/ TURBOCHARGER (550J AND 650J) | 0521-6 | AIR CONDITIONING PLUMBING GUARD (S/N'S XXXXXX-) | 1810-7G |
| AIR CLEANER RAINCAP WITH CLAMP (550J AND 650J)(SERIAL NO. 893113-) | 0521-6 | AIR CONDITIONING PLUMBING(HIGH AND LOW PRESSURE REFRIGERANT HOSES) | 1832-4 |
| AIR CLEANER RAINCAP WITH CLAMP(450J) | 0521-2 | AIR CONDITIONING RECEIVER DRYER | 1832-2 |
| AIR CLEANER STACK(450J) | 0521-2 | AIR CONDITIONING REFRIGERANT LINE | 1832-2 |
| AIR CLEANER STACK(550J AND 650J) | 0521-6 | AIR CONDITIONER AND HEATER BLOWER SWITCH (S/N'S -XXXXXX) | 1810-6 |
| AIR CLEANER VACUUM SWITCH SENSOR (450J) | 0521-2 | AIR CONDITIONER AND HEATER BLOWER SWITCH (S/N'S XXXXXX-) | 1810-7C |
| AIR CLEANER VACUUM SWITCH SENSOR (550J AND 650J) | 0521-6 | AIR CONDITIONER AND HEATER BLOWER SWITCH (S/N'S XXXXXX-) | 1810-7G |
| AIR CLEANER WITH TURBOCHARGER (550J AND 650J) | 0521-6 | AIR CONTROL VALVE (AIR SUSPENSION) | 1821-28 |
| AIR CLEANER WITH TURBOCHARGER(450J) | 0521-2 | AIR COVER, RECIRCULATION (S/N'S -XXXXXX) | 1810-4 |
| AIR CONDITIONER AND HEATER BLOWER SWITCH | 1832-2 | AIR COVER, RECIRCULATION (S/N'S -XXXXXX) | 1810-6 |
| AIR CONDITIONER AND HEATER BLOWER SWITCH (UPPER) | 1831-8 | AIR COVER, RECIRCULATION (S/N'S XXXXXX-) | 1810-7A |
| AIR CONDITIONER AND HEATER TEMPERATURE SWITCH | 1832-2 | AIR COVER, RECIRCULATION (S/N'S XXXXXX-) | 1810-7C |
| AIR CONDITIONER AND HEATER TEMPERATURE SWITCH (UPPER) | 1831-8 | AIR COVER, RECIRCULATION (S/N'S XXXXXX-) | 1810-7E |
| AIR CONDITIONER FIELD KIT | 1832-2 | AIR COVER, RECIRCULATION (S/N'S XXXXXX-) | 1810-7G |
| AIR CONDITIONER ON/OFF SWITCH | 1832-2 | AIR FILTER, FRESH AIR (UPPER) | 1831-8 |
| AIR CONDITIONER REAR COVER PLATE (S/N'S -XXXXXX) | 1810-4 | AIR INTAKE HOSE(450J) | 0521-2 |
| AIR CONDITIONER REAR COVER PLATE (S/N'S -XXXXXX) | 1810-6 | AIR INTAKE HOSE(550J AND 650J) | 0521-6 |
| AIR CONDITIONER REAR COVER PLATE (S/N'S XXXXXX-) | 1810-7A | AIR INTAKE SYSTEM | 0414-2 |
| AIR CONDITIONER REAR COVER PLATE (S/N'S XXXXXX-) | 1810-7C | AIR INTAKE TEMPERATURE SENSOR | 0414-2 |
| AIR CONDITIONER REAR COVER PLATE (S/N'S XXXXXX-) | 1810-7E | AIR LINES (AIR SUSPENSION) | 1821-28 |
| AIR CONDITIONER REAR COVER PLATE (S/N'S XXXXXX-) | 1810-7G | AIR SUSPENSION SEAT TOP PLATE | 1821-26 |

ALPHABETICAL INDEX - CONTINUED

| | PAGE | | PAGE |
|--|----------|--|----------|
| AIRDUCT WORK FOAM..... | 1810-7A | AUXILIARY FUNCTION CONTROL (FIFTH FUNCTI ON)..... | 3262-8 |
| AIRDUCT WORK FOAM..... | 1810-7E | AUXILIARY FUNCTION LEVER..... | 3262-6 |
| AIRDUCT WORK FOAM (S/N'S -XXXXXX)..... | 1810-4 | AUXILIARY FUNCTION LEVER..... | 3262-7A |
| ALARM BACKUP..... | 2004-4 | AUXILIARY FUNCTION LEVER (FIFTH FUNCTION)..... | 3262-8 |
| ALARM, REAR WORK LAMP BRACKET AND BACKUP..... | 1673-4 | AUXILIARY HYDRAULIC OIL COOLER AND HOSES IGC 650J..... | 2164-8 |
| ALARM, 12 VOLT WITH SHUTTER..... | 1676-8 | AUXILIARY HYDRAULIC OIL COOLER FIELD KIT..... | 2164-6 |
| ALARM, 12 VOLT WITH SHUTTER WITH 650J INTEGRADED GRADE CONTROL..... | 1676-3A | AUXILIARY JOYSTICK - FIELD KIT INTEGRATED GRADE CONTROL..... | 3262-22 |
| ALTERNATOR ADJUSTING STRAP..... | 0423-2 | AUXILIARY VALVE BELLCRANK..... | 3215-2 |
| ALTERNATOR FAN..... | 1672-2 | AUXILIARY VALVE CIRCUIT(PRESSURE)RELIEF VALVE(1900, 3000 AND 3450 PSI)..... | 3262-6 |
| ALTERNATOR HARNESS WITH 650J INTEGRADED GRADE CONTROL..... | 1674-28 | AUXILIARY VALVE CIRCUIT(PRESSURE)RELIEF VALVE(1900, 3000 AND 3450 PSI)..... | 3262-7A |
| ALTERNATOR MOUNTING BRACKETS..... | 0423-2 | AUXILIARY VALVE CIRCUIT(PRESSURE)RELIEF VALVE(5TH FUNCTION)(1900,3000&3450PSI)..... | 3262-8 |
| ALTERNATOR PULLEY..... | 1672-2 | AUXILIARY VALVE WITH LINKAGE (FIFTH FUNCTION)..... | 3262-8 |
| ALTERNATOR PULLEY, LOCKING COLLAR..... | 1672-2 | AUXILIARY VALVE WITH LINKAGE (FOURTH FUNCTION)..... | 3262-6 |
| ALTERNATOR 12 VOLT 65 AMP..... | 1672-2 | AUXILIARY VALVE WITH LINKAGE (FOURTH FUNCTION)..... | 3262-7A |
| ANGLE CYLINDER BARREL (450J) (SN -102817)..... | 3265-10 | AUXILIARY VALVE..... | 3262-2 |
| ANGLE CYLINDER BARREL (450J) (SN XXXXXX-)..... | 3265-13A | | |
| ANGLE CYLINDER BARREL (450J) (SN 102818-XXXXXX)..... | 3265-12 | B | |
| ANGLE CYLINDER BARREL (550J AND 650J)..... | 3265-14 | BACK FENDER..... | 1927-2 |
| ANGLE CYLINDER HEAD END PIN..... | 3243-2 | BACK PAD CLIPS, SEAT, X-MAS TREE..... | 1821-30 |
| ANGLE CYLINDER HYDRAULIC HOSES..... | 3263-6 | BACK, SEAT PAD..... | 1821-2 |
| ANGLE CYLINDER ROD (450J) (SN -102817)..... | 3265-10 | BACKING PLATE, CAB ONLY UNDER SEAT..... | 1831-2 |
| ANGLE CYLINDER ROD (450J) (SN XXXXXX-)..... | 3265-13A | BACKUP ALARM..... | 2004-4 |
| ANGLE CYLINDER ROD (450J) (SN 102818-XXXXXX)..... | 3265-12 | BACKUP ALARM AND REAR WORK LAMP BRACKET..... | 1673-4 |
| ANGLE CYLINDER BARREL (550J AND 650J)..... | 3265-14 | BACKUP ALARM PLATE..... | 2004-4 |
| ANGLE CYLINDER HEAD END PIN..... | 3243-2 | BALANCER SHAFT, ENGINE..... | 0415-2 |
| ANGLE CYLINDER HYDRAULIC HOSES..... | 3263-6 | BALL, C-FRAME PIVOT..... | 3243-2 |
| ANGLE CYLINDER ROD (450J) (SN -102817)..... | 3265-10 | BARREL, ANGLE CYLINDER (450J) (SN -102817)..... | 3265-10 |
| ANGLE CYLINDER ROD (450J) (SN XXXXXX-)..... | 3265-13A | BARREL, ANGLE CYLINDER (450J) (SN XXXXXX-)..... | 3265-13A |
| ANGLE CYLINDER ROD (450J) (SN 102818-XXXXXX)..... | 3265-12 | BARREL, ANGLE CYLINDER (450J) (SN 102818-XXXXXX)..... | 3265-12 |
| ANGLE CYLINDER ROD (550J AND 650J)..... | 3265-14 | BARREL, ANGLE CYLINDER (550J AND 650J)..... | 3265-14 |
| ANGLE CYLINDER ROD END PIN..... | 3201-4 | BARREL, HYDRAULIC CYLINDER..... | 3265-4 |
| ANGLE CYLINDER UNITIZED PISTON (450J) (SN -102817)..... | 3265-10 | BARREL, TILT CYLINDER..... | 3265-6 |
| ANGLE CYLINDER UNITIZED PISTON (450J) (SN XXXXXX-)..... | 3265-13A | BARREL, TILT CYLINDER..... | 3265-8 |
| ANGLE CYLINDER UNITIZED PISTON (450J) (SN 102818-XXXXXX)..... | 3265-12 | BASE WITH HEATER, ROPS AND CAB SEAT UNDER SEAT..... | 1831-2 |
| ANGLE CYLINDER UNITIZED PISTON (550J AND 650J)..... | 3265-14 | BASE, CAB SEAT..... | 1811-4 |
| ANGLE HOSE HEAD END..... | 3263-8 | BATTERY CABLE, NEGATIVE AND POSITIVE, HEAVY DUTY..... | 1671-4 |
| ANGLE HOSE ROD END..... | 3263-8 | BATTERY CABLES NEGATIVE AND POSITIVE..... | 1671-2 |
| ANGLE HYDRAULIC CYLINDER..... | 3265-4 | BATTERY COVER, HEAVY DUTY..... | 1671-4 |
| ANGLE SECTION RELIEF VALVE (7500 PSI) (NOT ILLUSTRATED)..... | 3262-2 | BATTERY GROUND STRAP..... | 1671-2 |
| ANGLE VALVE SECTION, IGC CONTROL VALVE (650J)..... | 3262-16 | BATTERY GROUND STRAP..... | 1671-4 |
| ANTENNA, RADIO..... | 2001-2 | BATTERY HEAVY DUTY..... | 1671-4 |
| ANTENNA, RADIO (S/N'S -XXXXXX)..... | 1810-4 | BATTERY HOLDOWN..... | 1671-2 |
| ANTENNA, RADIO (S/N'S XXXXXX-)..... | 1810-7A | BATTERY HOLDOWN PLATE, HEAVY DUTY..... | 1671-4 |
| ANTENNA, RADIO (S/N'S XXXXXX-)..... | 1810-7E | BATTERY RUBBER BOOT..... | 1671-2 |
| ARM, FRONT WINDOW WIPER..... | 1814-6 | BATTERY STANDARD..... | 1671-2 |
| ARM, SIDE WINDOW WIPER..... | 1814-10 | BATTERY TERMINAL COVER..... | 1671-2 |
| ARMREST (AIR SUSPENSION)..... | 1821-24 | BEARING CAPS, ENGINE MAIN AND THRUST..... | 0404-2 |
| ARMREST (DELUXE)..... | 1821-14 | BEARING PLATE, HYDROSTATIC MOTOR CYLINDER BLOCK..... | 0355-24 |
| ARMREST PLATE (AIR SUSPENSION)..... | 1821-24 | BEARING ROLLER KIT (AIR SUSPENSION SEAT)..... | 1821-26 |
| ARMREST PLATE (DELUXE)..... | 1821-14 | | |
| ARMREST, STANDARD SEAT..... | 1821-4 | | |
| ARMS, ROCKER..... | 0402-2 | | |
| AUX VALVE SECTION, IGC CONTROL VALVE (650J)..... | 3262-18 | | |
| AUXILIARY FUNCTION CONTROL..... | 3262-6 | | |
| AUXILIARY FUNCTION CONTROL..... | 3262-7A | | |

ALPHABETICAL INDEX - CONTINUED

| | PAGE | | PAGE |
|--|----------|---|----------|
| BEARING, CRANKSHAFT | 0401-2 | BLOWER SWITCH, HEATER AND AIR | |
| BEARING, HYDROSTATIC PUMP | 0355-14 | CONDITIONER (UPPER)..... | 1831-8 |
| BEARING, HYDROSTATIC PUMP SHAFT ROLLER | 0355-12 | BLOWER WITH MOTOR ROPS AND CAB UNDER | |
| BEARINGS,CONNECTING ROD | 0403-2 | SEAT HEATER | 1831-2 |
| BELLCRANK, AUXILIARY VALVE | 3215-2 | BOLTS, BLADE | 3201-2 |
| BELT IDLER TENSIONER | 0429-2 | BOLTS, BLADE | 3201-4 |
| BELT WITHOUT AIR CONDITIONING, DRIVE | 0512-2 | BOOT CLIP KIT (AIR SUSPENSION SEAT)..... | 1821-26 |
| BELT, BLOWER FAN POLY RIB (WITHOUT AIR | | BOOT KIT (AIR SUSPENSION SEAT)..... | 1821-26 |
| CONDITIONING)..... | 0512-2 | BOOT KIT (DELUXE)..... | 1821-18 |
| BELT, DRIVE | 0429-1 | BOOT, BATTERY BOOT..... | 1671-2 |
| BELT, TWO INCH SEAT | 1821-2 | BOOT, HYDRAULIC LINKAGE | 3215-2 |
| BELTS, AIR CONDITIONING COMPRESSOR..... | 1832-6 | BOOT, SINGLE LEVER CONTROL | 0315-6 |
| BIT, BLADE END | 3201-2 | BOOT, SINGLE LEVER CONTROL | |
| BIT, BLADE END | 3201-4 | (CONTINUED)..... | 0315-8 |
| BLADE , FRONT WINDOW WIPER | 1814-6 | BORE SEAL KIT (450J) | |
| BLADE ANGLE HYDRAULIC CYLINDER | | (SN -102817)..... | 3265-10 |
| (550J AND 650J)..... | 3265-14 | BORE SEAL KIT (450J) | |
| BLADE ANGLE HYDRAULIC CYLINDER HOSES..... | 3263-6 | (SN XXXXXX-)..... | 3265-13A |
| BLADE ANGLE HYDRAULIC CYLINDER(450J) | | BORE SEAL KIT (450J) | |
| (SN -102817)..... | 3265-10 | (SN 102818-XXXXXX)..... | 3265-12 |
| BLADE ANGLE HYDRAULIC CYLINDER(450J) | | BORE SEAL KIT (550J AND 650J)..... | 3265-14 |
| (SN XXXXX-) | 3265-13A | BOWL,PRIMARY FUEL FILTER | 0563-2 |
| BLADE ANGLE HYDRAULIC CYLINDER(450J) | | BOX AND CUP TRAY, LUNCH..... | 1810-12 |
| (SN 102818-XXXXXX) | 3265-12 | BOX, TOOL | 1810-12 |
| BLADE BOLTS | 3201-2 | BRACKET WITH INTEGRATED GRADE CONTROL | |
| BLADE BOLTS | 3201-4 | FUSEBOX 650J..... | 1674-30 |
| BLADE CUTTING EDGE | 3201-2 | BRACKET, FINAL FUEL FILTER FUEL LINES..... | 0420-2 |
| BLADE CUTTING EDGE | 3201-4 | BRACKET, HYDRAULIC FILTER | 2164-4 |
| BLADE END BIT | 3201-2 | BRACKET, HYDROSTATIC MOTOR CONTROL SHIFT..... | 0355-20 |
| BLADE END BIT | 3201-4 | BRACKET, HYDROSTATIC REAR PUMP LIFTING..... | 0355-10 |
| BLADE HYDRAULIC PLUMBING | 3263-8 | BRACKET, LIGHT | 1673-6 |
| BLADE LIFT CYLINDER HYDRAULIC HOSES | 3263-2 | BRACKET, LIGHT CAB HI-INTENSITY | 1673-8 |
| BLADE LIFT HYDRAULIC CYLINDER | 3265-8 | BRACKET, LOW AND HIGH PRESSURE AIR | |
| BLADE PINS | 3201-2 | CONDITIONING REFRIGERANT HOSE | 1832-4 |
| BLADE PINS | 3201-4 | BRACKET, PARK LOCK SUPPORT | 1115-2 |
| BLADE SIDE WINDOW WIPER | 1814-10 | BRACKET, POWER TRAIN/ENGINE CRADLE | 0540-2 |
| BLADE TILT CYLINDER | 3265-6 | BRACKET, SEAT TILTING | 1811-2 |
| BLADE TILT CYLINDER HYDRAULIC HOSES | 3263-4 | BRACKET, SEAT TILTING | 1811-4 |
| BLADE TORQUE AND SHIM DECAL (ENGLISH, | | BRACKET, SINGLE LEVER CONTROL | 0315-6 |
| FRENCH, SPANISH)..... | 3201-2 | BRACKET, SINGLE LEVER CONTROL | |
| BLADE 105 INCH (FIELD) | 3201-2 | (CONTINUED)..... | 0315-8 |
| BLADE 115 INCH (FIELD) | 3201-2 | BRACKET, TENSIONER..... | 0429-2 |
| BLADE 115 INCH (FIELD) | 3201-4 | BRACKET, TRACK ROLLER | 0133-2 |
| BLADE 121 INCH (FIELD) | 3201-2 | BRACKETS WITH IDLER | 0133-6 |
| BLADE 124 INCH (FIELD) | 3201-2 | BRACKETS, AIR CONDITIONING COMPRESSOR | 1832-6 |
| BLADE 124 INCH (FIELD) | 3201-4 | BRACKETS, ALTERNATOR MOUNTING | 0423-2 |
| BLADE 128 INCH (FIELD) | 3201-2 | BRAKE VALVE | 1062-2 |
| BLADE 90 INCH (FIELD) | 3201-2 | BRAKE VALVE KIT | 1062-2 |
| BLADE 90 INCH (FIELD) | 3201-4 | BRAKE VALVE SWITCH | 1062-2 |
| BLADE 97 INCH (FIELD) | 3201-2 | BRAKE/DECELERATOR PEDAL | 0515-4 |
| BLADE 97 INCH (FIELD) | 3201-4 | BRAKE/DECELERATOR SENSOR, ROTARY | 0515-4 |
| BLADE, HYDRAULIC SIX WAY LABEL | | BRAKE/DECELERATOR SHAFT | 0515-4 |
| (S/N'S -XXXXXX) | 1810-4 | BRAKE/DECELERATOR SUPPORT | 0515-4 |
| BLADE, HYDRAULIC SIX WAY LABEL | | BRAKE, FINAL DRIVES | 0201-2 |
| (S/N'S XXXXXX-) | 1810-7A | BRAKE, FINAL DRIVES | 0201-3A |
| BLADE, HYDRAULIC SIX WAY LABEL | | BRAKE, FINAL DRIVES | |
| (S/N'S XXXXXX-) | 1810-7E | (CONTINUED)..... | 0201-4 |
| BLADE, REAR WIPER | 1814-8 | BRAKE, FINAL DRIVES | |
| BLOCK, ENGINE CYLINDER | 0404-2 | (CONTINUED)..... | 0201-5A |
| BLOWER FAN..... | 0512-2 | BREAKER LIGHTCIRCUIT CAB HI-INTENSITY..... | 1673-8 |
| BLOWER FAN HEATER (UPPER)..... | 1831-8 | BREAKER 20 AMP (ROPS HARNESS), CIRCUIT..... | 1674-8 |
| BLOWER FAN POLY RIB BELT | 0512-2 | BREAKER 20 AMP, CIRCUIT (CAB HARNESS) | 1674-6 |
| BLOWER FAN SPACER | 0512-2 | BREAKER, LIGHT CIRCUIT | 1673-6 |
| BLOWER MOTOR BULKHEAD ROPS AND CAB UNDER | | BULB, CAB DOME LAMP | 1810-7A |
| SEAT HEATER | 1831-2 | BULB, CAB DOME LAMP | 1810-7E |
| BLOWER SWITCH, AIR CONDITIONER AND | | BULB, CAB DOME LAMP AND | 1810-4 |
| HEATER | 1832-2 | BULB, LIGHT | 1673-6 |

ALPHABETICAL INDEX - CONTINUED

| | PAGE | | PAGE |
|--|---------|---|---------|
| BULB, LIGHT CAB HI-INTENSITY | 1673-8 | CAB FRESH AIR FILTER | |
| BULB, WORK LIGHT | 1673-4 | (UPPER)..... | 1831-8 |
| BULKHEAD PLATE | 3263-4 | CAB FRONT ACCESS PLATE | 1810-8 |
| BULKHEAD, BLOWER MOTOR ROPS AND CAB | | CAB FUSEBLOCK LABEL | 1674-6 |
| UNDER SEAT HEATER | 1831-2 | CAB FUSEBLOCK LABEL | |
| BUMPER KIT (AIR SUSPENSION) | 1821-28 | (S/N'S -XXXXXX) | 1810-6 |
| BUMPER, DOOR | 1813-4 | CAB FUSEBLOCK LABEL | |
| BUSHING AND EXTENDED WEAR TRACK BUSHING | 0132-12 | (S/N'S XXXXXX-) | 1810-7C |
| BUSHING EXTENDED WEAR, TRACK | 0132-6 | CAB FUSEBLOCK LABEL | |
| BUSHING EXTENDED WEAR, TRACK | 0132-8 | (S/N'S XXXXXX-) | 1810-7G |
| BUSHING, CAMSHAFT | 0402-1 | CAB FUSES, CIRCUIT BREAKER AND | |
| BUSHING, ENGINE BALANCER SHAFT | 0404-2 | ELECTRICAL RELAYS..... | 1674-22 |
| BUSHING, TRACK | 0132-6 | CAB HARNESS | 1674-6 |
| BUSHING, TRACK | 0132-8 | CAB HARNESS DIODE CONNECTOR..... | 1674-6 |
| BUSHINGS C-FRAME | 3243-2 | CAB HARNESS DOOR CLIPS/CLAMPS | 1674-6 |
| BY PASS VALVE, HYDROSTATIC OIL COOLER | 0363-14 | CAB HARNESS, INTERGRADED GRADE CONTROL..... | 1674-6 |
| BY-PASS VALVE, ENGINE OIL..... | 0404-2 | CAB HEADLINER, FRONT (WITH LOUVERS) | |
| | | (S/N'S -XXXXXX) | 1810-4 |
| C | | CAB HEADLINER, FRONT (WITH LOUVERS) | |
| C FRAME STEP | 3243-4 | (S/N'S XXXXXX-) | 1810-7A |
| C-FLANGE ADAPTER | 0355-2 | CAB HEADLINER, FRONT (WITH LOUVERS) | |
| C-FRAME BUSHINGS | 3243-2 | (S/N'S XXXXXX-) | 1810-7E |
| C-FRAME HOSE GUARD | 1921-4 | CAB HEATER (UPPER)..... | 1831-8 |
| C-FRAME LUBRICATION HOSES | 3243-2 | CAB HEATER HOSE | 1831-6 |
| C-FRAME PINS | 3243-2 | CAB HEATER PLUMBING | 1831-6 |
| C-FRAME STANDARD AND HEAVY DUTY | | CAB HEATER THERMAL | |
| REINFORCEMENT KIT | 3243-2 | (UPPER)..... | 1831-8 |
| C-FRAME, HEAVY DUTY | 3243-2 | CAB HEATER THERMOSTAT | |
| C-FRAME, STANDARD | 3243-2 | (UPPER)..... | 1831-8 |
| C-FRAME, XLT | 3243-2 | CAB HI-INTENSITY LIGHTS | 1673-8 |
| CAB | 1811-4 | CAB HIGH-INTENSITY WORK LIGHT LABEL | 1673-8 |
| CAB ACCESSORIES KIT | 1810-12 | CAB LIGHT IN HEADLINER, INTERIOR | |
| CAB AND ROPS FLOOR PLATE | 1810-8 | (S/N'S -XXXXXX) | 1810-4 |
| CAB AND ROPS SEAT BASE WITH HEATER | | CAB LIGHT IN HEADLINER, INTERIOR | |
| UNDER SEAT | 1831-2 | (S/N'S XXXXXX-) | 1810-7A |
| CAB AND ROPS UNDER SEAT HEATER | 1831-2 | CAB LIGHT IN HEADLINER, INTERIOR | |
| CAB COMPONENTS | | (S/N'S XXXXXX-) | 1810-7E |
| (S/N'S -XXXXXX) | 1810-4 | CAB NOISE REDUCTION FOAM/ISOLATOR | 1807-2 |
| CAB COMPONENTS | | CAB ONLY BACKING PLATE UNDER SEAT | 1831-2 |
| (S/N'S XXXXXX-) | 1810-7A | CAB PARTS (S/N'S -XXXXXX) | 1810-4 |
| CAB COMPONENTS | | CAB PARTS (S/N'S XXXXX-)..... | 1810-7A |
| (S/N'S XXXXXX-) | 1810-7E | CAB PARTS (S/N'S XXXXX-)..... | 1810-7E |
| CAB COMPONENTS (CONTINUED) | | CAB PLATE | 1810-8 |
| (S/N XXXXXX-) | 1810-7C | CAB ROPS OR ROPS MOUNTS AND ISOLATORS..... | 1811-6 |
| CAB COMPONENTS (CONTINUED) | | CAB SEAT BASE | 1811-4 |
| (S/N XXXXXX-) | 1810-7G | CAB STRUCTURE WELDMENT CONVENIENCE | |
| CAB COMPONENTS (CONTINUED) | | ASSEMBLY..... | 1811-4 |
| (S/N'S -XXXXXX) | 1810-6 | CAB WINDOW | 1814-2 |
| CAB DOME LAMP AND BULB | | CAB, RECTANGULAR LOUVER | |
| (S/N'S -XXXXXX) | 1810-4 | (S/N'S -XXXXXX) | 1810-4 |
| CAB DOME LAMP AND BULB | | CAB, RECTANGULAR LOUVER | |
| (S/N'S XXXXXX-) | 1810-7A | (S/N'S XXXXXX-) | 1810-7A |
| CAB DOME LAMP AND BULB | | CAB, RECTANGULAR LOUVER | |
| (S/N'S XXXXXX-) | 1810-7E | (S/N'S XXXXXX-) | 1810-7E |
| CAB DOOR | 1813-2 | CABLE, MASTER DISCONNECT SWITCH | 1674-2 |
| CAB DOOR FRAME AND GLASS..... | 1813-2 | CABLE, NEGATIVE BATTERY, HEAVY DUTY | 1671-4 |
| CAB DOOR HINGE KIT | 1811-4 | CABLE, POSITIVE BATTERY, HEAVY DUTY | 1671-4 |
| CAB DOOR HOLD OPEN..... | 1813-4 | CABLES, NEGATIVE AND POSITIVE BATTERY | 1671-2 |
| CAB DOOR HOLD OPEN HANDLE GRIP | 1813-4 | CAM KIT, SEAT SUSPENSION (DELUXE) | 1821-20 |
| CAB DOOR HOLD OPEN LATCH | 1813-4 | CAMSHAFT | 0402-1 |
| CAB DOOR LATCH | 1813-2 | CAN TERMINATION RESISTOR | 1674-6 |
| CAB DOOR LATCH COVER | 1813-2 | CAN TERMINATION RESISTOR | 1674-8 |
| CAB DOORS AND LATCHES | 1813-2 | CAN TERMINATION RESISTOR | 1674-10 |
| CAB FOOTREST | 1810-8 | CAN TERMINATION RESISTOR W/650J | |
| CAB FRAME STRUCTURE CONVENIENCE ASSEMBLY | 1811-4 | W/ INTEGRATED GRADE CONTROL | 1674-28 |
| | | CAP WIPER WASHER RESERVOIR..... | 1814-4 |
| | | CAP WIPER WASHERTANK | 1814-4 |

ALPHABETICAL INDEX - CONTINUED

| | PAGE | | PAGE |
|---|---------|--|---------|
| CAP, AIR CLEANER WITH CLAMP (550J AND 650J)..... | 0521-6 | CHRISTMAS TREE CLIP (S/N'S -XXXXXX) | 1810-4 |
| CAP, AIR CLEANER WITH CLAMP(450J)..... | 0521-2 | CHRISTMAS TREE CLIP (S/N'S XXXXXX-) | 1810-7A |
| CAP, ENGINE MAIN AND THRUST BEARING | 0404-2 | CHRISTMAS TREE CLIP (S/N'S XXXXXX-) | 1810-7E |
| CAP, ENGINE OIL FILLER(450J) | 0521-2 | CHROME MUFFLER EXHAUST STACK | 1911-2 |
| CAP, ENGINE OIL FILLER(550J AND 650J)..... | 0521-6 | CIGAR LIGHTER | 2006-2 |
| CAP, FUEL TANK FILLER..... | 0564-2 | CIGAR LIGHTER FUSE..... | 2006-2 |
| CAP, HYDROSTATIC MOTOR END..... | 0355-20 | CIRCUIT BREAKER AND ELECTRICAL RELAYS, FUSES/CAB | 1674-22 |
| CAP, RADIATOR (450J AND 550J)..... | 0511-6 | CIRCUIT BREAKER AND ELECTRICAL RELAYS, FUSES/ROPS | 1674-24 |
| CAP, RADIATOR(650J)..... | 0511-10 | CIRCUIT BREAKER LIGHT..... | 1673-6 |
| CAP,END..... | 0355-2 | CIRCUIT BREAKER LIGHT CAB HI-INTENSITY | 1673-8 |
| CAP,ENGINE OIL FILL | 0402-3 | CIRCUIT BREAKER 20 AMP..... | 1674-16 |
| CARRIER ROLLER COVER..... | 0133-16 | CIRCUIT BREAKER 20 AMP (CAB HARNESS) | 1674-6 |
| CARRIER ROLLER SUPPORT | 0133-16 | CIRCUIT BREAKER 20 AMP (ROPS HARNESS)..... | 1674-8 |
| CARRIER ROLLER WITH SHAFT..... | 0133-16 | CIRCUIT(PRESSURE)RELIEF VALVE, AUXILIARY VALVE(1900, 3000 AND 3450 PSI)..... | 3262-6 |
| CENTER CHAIN GUIDES 650J | 0131-12 | CIRCUIT(PRESSURE)RELIEF VALVE, AUXILIARY VALVE(1900, 3000 AND 3450 PSI)..... | 3262-7A |
| CENTER GUARD | 1741-2 | CIRCUIT(PRESSURE)RELIEF VALVE, AUXILIARY VALVE(5TH FUNCTION)(1900,3000&3450PSI) | 3262-8 |
| CHAIN BUSHING AND EXTENDED WEAR TRACK CHAIN BUSHING..... | 0132-12 | CLIP, CHRISTMAS TREE (S/N'S -XXXXXX) | 1810-4 |
| CHAIN DRIVE SPROCKET, TRACK | 0132-16 | CLIP, CHRISTMAS TREE (S/N'S XXXXXX-) | 1810-7A |
| CHAIN EXTENDED WEAR, LUBED CHAIN 40 LINK WITH 16 INCH SHOES TRACK..... | 0132-12 | CLIP, CHRISTMAS TREE (S/N'S XXXXXX-) | 1810-7E |
| CHAIN EXTENDED WEAR, LUBED CHAIN 40 LINK WITH 24 INCH SHOES TRACK..... | 0132-12 | CLIPS/CLAMPS, CAB HARNESS DOOR..... | 1674-6 |
| CHAIN EXTENDED WEAR, TRACK LUBED 40 LINK WITHOUT SHOES..... | 0132-6 | CLIPS, X-MAS TREE, SEAT BACK | 1821-30 |
| CHAIN EXTENDED WEAR, TRACK LUBED 40 LINK WITHOUT SHOES..... | 0132-8 | CLOTH HEADREST (AIR SUSPENSION)..... | 1821-22 |
| CHAIN GUIDE SLIDE, FRONT (WELDED ON COMPONENT)..... | 0131-2 | CLOTH SEAT (AIR SUSPENSION) | 1821-22 |
| CHAIN GUIDES | 0131-6 | CLOTH SEAT (DELUXE) | 1821-12 |
| CHAIN GUIDES 650J..... | 0131-12 | CLOTH SEAT BACK (AIR SUSPENSION)..... | 1821-22 |
| CHAIN WITH EXTENDED WEAR BUSHING, MASTER TRACK LINK WITH LUBED | 0132-6 | CLOTH SEAT PAD (AIR SUSPENSION) | 1821-22 |
| CHAIN WITH EXTENDED WEAR BUSHING, MASTER TRACK LINK WITH LUBED | 0132-8 | CLUTCH, STARTING MOTOR..... | 0422-2 |
| CHAIN, MASTER TRACK LINK WITH LUBED..... | 0132-6 | CLYINDER TILT HYDRAULIC | 3265-4 |
| CHAIN, MASTER TRACK LINK WITH LUBED..... | 0132-8 | COIL, HYDROSTATIC MOTOR CONTROL ELECTRICAL | 0355-20 |
| CHAIN, TRACK LUBED 40 LINK WITH 16 INCH SHOES..... | 0132-6 | COLD START/WARM UP LABEL (S/N'S -XXXXXX) | 1810-4 |
| CHAIN, TRACK LUBED 40 LINK WITH 16 INCH SHOES..... | 0132-10 | COLD START/WARM UP LABEL (S/N'S XXXXXX-) | 1810-7A |
| CHAIN, TRACK LUBED 40 LINK WITH 16 INCH SHOES..... | 0132-12 | COLD START/WARM UP LABEL (S/N'S XXXXXX-) | 1810-7E |
| CHAIN, TRACK LUBED 40 LINK WITHOUT SHOES..... | 0132-6 | COLD WEATHER/ETHER STARTING AID..... | 0505-2 |
| CHAIN, TRACK LUBED 40 LINK WITHOUT SHOES..... | 0132-8 | COLD WEATHER/FLUID/ETHER START AID SWITCH | 1676-8 |
| CHAIN, TRACK LUBED 40 LINK WITHOUT SHOES..... | 0132-10 | COMPONENTS, CAB (S/N'S -XXXXXX) | 1810-4 |
| CHAIN, TRACK LUBED 40 LINK WITHOUT SHOES..... | 0132-12 | COMPONENTS, CAB (S/N'S XXXXXX-) | 1810-7A |
| CHAIN, TRACK SEALED 37 LINK WITH 16 INCH SHOES..... | 0132-4 | COMPONENTS, CAB (S/N'S XXXXXX-) | 1810-7E |
| CHAIN, TRACK SEALED 37 LINK WITHOUT SHOES..... | 0132-4 | COMPONENTS, ROPS | 1810-2 |
| CHAIN, TRACK SEALED 40 LINK WITH 18 INCH SHOES (450J,550J)..... | 0132-2 | COMPONENTS, STANDARD SEAT SUSPENSION..... | 1821-6 |
| CHAIN, TRACK SEALED 40 LINK WITHOUT SHOES (450J,550J)..... | 0132-2 | COMPRESSOR, AIR CONDITIONING..... | 1832-6 |
| CHARGE FITTING, AIR CONDITIONING | 1832-4 | COMPRESSOR, AIR CONDITIONING..... | 1832-8 |
| CHART, PERIODIC SERVICE | 1322-2 | COMPRESSOR, 12 VOLT (AIR SUSPENSION SEAT) | 1821-26 |
| CHART, PERIODIC SERVICE LABEL | 1911-2 | CONDENSER FAN AIR CONDITIONING..... | 1832-2 |
| | | CONDENSER, AIR CONDITIONING CORE | 1832-2 |
| | | CONNECTING ROD | 0403-2 |
| | | CONNECTING ROD BEARINGS..... | 0403-2 |
| | | CONNECTOR, TORQUE TORSIONAL COUPLING..... | 0325-2 |

ALPHABETICAL INDEX - CONTINUED

| | PAGE | | PAGE |
|---|---------|---|---------|
| CONTROL HANDLE, T-BAR..... | 3215-2 | COVER PLATE - CAB, FUSE (S/N'S -XXXXXX) | 1810-4 |
| CONTROL LEVER (AUXILIARY JOYSTICK) FIELD KIT..... | 3262-22 | COVER PLATE - CAB, FUSE (S/N'S XXXXXX-) | 1810-7A |
| CONTROL LEVER (JOYSTICK) INTEGRATED GRADE & PILOT ENABLE SWITCH..... | 3262-20 | COVER PLATE - CAB, FUSE (S/N'S XXXXXX-) | 1810-7E |
| CONTROL LEVER, PARK LOCK..... | 1115-2 | COVER PLATE WITH TUBE, HYDRAULIC RESERVOIR..... | 2164-2 |
| CONTROL LINKAGE, HYDRAULIC..... | 3215-2 | COVER PLATE, FUSE..... | 1810-2 |
| CONTROL PANEL, ELECTRONIC SWITCH OVERHEAD (S/N'S -XXXXXX)..... | 1810-4 | COVER PLATE, HYDROSTATIC RESERVOIR ACCESS..... | 0364-4 |
| CONTROL PANEL, ELECTRONIC SWITCH OVERHEAD (S/N'S XXXXXX-)..... | 1810-7A | COVER, ACCESS, INJECTION PUMP GEAR | 0402-4 |
| CONTROL PANEL, ELECTRONIC SWITCH OVERHEAD (S/N'S XXXXXX-)..... | 1810-7E | COVER, AIR CLEANER (550J AND 650J)..... | 0521-6 |
| CONTROL SHAFT WITH ARM, HYDRAULIC..... | 3215-2 | COVER, AIR CLEANER(450J) | 0521-2 |
| CONTROL U-JOINT (HOUSING),HYDRAULIC..... | 3215-2 | COVER, CAB DOOR LATCH | 1813-2 |
| CONTROL UNIT ENGINE | 0575-2 | COVER, CARRIER ROLLER | 0133-16 |
| CONTROL VALVE SECTION, ANGLE IGC (650J)..... | 3262-16 | COVER, FLY WHEEL..... | 0540-2 |
| CONTROL VALVE SECTION, AUX IGC (650J)..... | 3262-18 | COVER, HEATER TOP (UPPER) | 1831-8 |
| CONTROL VALVE SECTION, LIFT IGC (650J)..... | 3262-12 | COVER, HORN SWITCH (CONTINUED)..... | 0315-8 |
| CONTROL VALVE SECTION, TILT IGC (650J)..... | 3262-14 | COVER, HYDROSTATIC PUMP SIDE | 0355-2 |
| CONTROL VALVE TO BLADE LIFT CYLINDER HYDRAULIC HOSES | 3263-2 | COVER, HYDROSTATIC RESERVOIR | 0364-4 |
| CONTROL VALVE TO HYDRAULIC FILTER HOSE | 2163-6 | COVER, MICROPROCESSOR..... | 0375-2 |
| CONTROL VALVE TO HYDRAULIC PUMP PRESSURE HOSE | 2163-4 | COVER, OIL ACCESS..... | 1741-2 |
| CONTROL VALVE, HYDRAULIC..... | 3262-2 | COVER, PTO SHAFT..... | 2161-6 |
| CONTROL VALVE, HYDRAULIC..... | 3262-10 | COVER, REAR ACCESS..... | 1741-2 |
| CONTROL WITH SPEED IN GRIP, SINGLE LEVER | 0315-6 | COVER, REAR WIPER MOTOR | 1814-8 |
| CONTROL, AUXILIARY FUNCTION..... | 3262-6 | COVER, RECIRCULATION AIR (S/N'S -XXXXXX) | 1810-4 |
| CONTROL, AUXILIARY FUNCTION..... | 3262-7A | COVER, RECIRCULATION AIR (S/N'S -XXXXXX) | 1810-6 |
| CONTROL, AUXILIARY FUNCTION (FIFTH FUNCT ION)..... | 3262-8 | COVER, RECIRCULATION AIR (S/N'S XXXXXX-) | 1810-7A |
| CONTROL, SEAT SLIDE (ALL SEATS)..... | 1821-8 | COVER, RECIRCULATION AIR (S/N'S XXXXXX-) | 1810-7C |
| CONTROL, SEAT TILT (ALL SEATS) | 1821-8 | COVER, RECIRCULATION AIR (S/N'S XXXXXX-) | 1810-7E |
| CONTROL, SINGLE LEVER (CONTINUED)..... | 0315-8 | COVER, RECIRCULATION AIR (S/N'S XXXXXX-) | 1810-7G |
| CONTROLLER, ELECTROHYDRUALIC | 1674-6 | COVER, ROCKER ARM | 0402-3 |
| CONVENIENCE ASSEMBLY, ROPS | 1811-2 | COVER, START AID SWITCH | 0505-6 |
| COOLANT HEATER, ENGINE..... | 0505-4 | COVER, THERMOSTAT..... | 0418-2 |
| COOLANT HEATER, FUEL FIRED | 0505-8 | COVER, TIMING GEAR..... | 0402-4 |
| COOLANT HEATER, FUEL FIRED (HYDRONIC 5 SERIES HEATER) | 0505-10 | COVER, VANDAL WITH ROPS | 1810-2 |
| COOLER BY PASS VALVE, HYDROSTATIC OIL | 0363-14 | COVER,ENGINE OIL FILLER OPENING | 0407-3 |
| COOLER FIELD KIT, AUXILIARY HYDRAULIC OIL..... | 2164-6 | COVERS, PLATFORM CORNER..... | 1810-14 |
| COOLER, ENGINE OIL | 0419-2 | COVERS, TRACK FRAME..... | 0133-8 |
| COOLER, HYDRAULIC OIL IGC 650J | 2164-8 | CRADLE/POWER TRAIN MOUNTING, ENGINE | 0540-2 |
| COOLER, HYDROSTATIC OIL(450J AND 550J)..... | 0511-6 | CRANKSHAFT AND BEARINGS..... | 0401-2 |
| COOLER, HYDROSTATIC OIL(650J) | 0511-10 | CRANKSHAFT ENGINE SPEED SENSOR..... | 0402-4 |
| COOLING SYSTEM SAND SHIELD..... | 0511-12 | CRANKSHAFT PULLEY | 0429-1 |
| CORDURA SLEEVE | 3263-4 | CRANKSHAFT PULLEY AND DRIVE BELT | 0429-1 |
| CORDURA SLEEVE | 3263-8 | CRANKSHAFT REAR OIL SEAL | 0433-3 |
| CORE CONDENSER, AIR CONDITIONING | 1832-2 | CRANKSHAFT TIMING WHEEL | 0401-2 |
| CORE, EVAPORATOR (UPPER)..... | 1831-8 | CUP TRAY AND LUNCH BOX | 1810-12 |
| CORE, HEATER (UPPER)..... | 1831-8 | CUPPED, END BIT | 3201-4 |
| CORE, ROPS AND CAB UNDER SEAT HEATER..... | 1831-2 | CUTTING EDGE, BLADE | 3201-2 |
| CORNER COVERS, PLATFORM | 1810-14 | CUTTING EDGE, BLADE | 3201-4 |
| COUNTERWEIGHT, FRONT | 1749-2 | CYLINDER BARREL HYDRAULIC..... | 3265-4 |
| COUNTERWEIGHT, REAR | 1749-4 | CYLINDER BLOCK BEARING PLATE, HYDROSTATIC MOTOR..... | 0355-24 |
| COUPLER, FLYWHEEL..... | 0325-2 | CYLINDER BLOCK, ENGINE | 0404-2 |
| COUPLER, LOVEJOY | 0325-2 | CYLINDER BLOCK, HYDROSTATIC MOTOR..... | 0355-24 |
| COUPLING, HYDROSTATIC FRONT AND REAR COUPLING..... | 0355-4 | CYLINDER BLOCK, PISTON, SWASHPLATE AND PARTS, HYDROSTATIC MOTOR, HOUSING | 0355-24 |
| COUPLING, STANDARD HYDRAULIC PUMP | 2161-2 | CYLINDER GUARD | 3265-4 |
| COVER BATTERY TERMINAL | 1671-2 | | |
| COVER BATTERY, HEAVY DUTY | 1671-4 | | |

ALPHABETICAL INDEX - CONTINUED

| | PAGE | | PAGE |
|--|----------|---|---------|
| CYLINDER HEAD | 0409-2 | DEFROST LOUVERS | |
| CYLINDER HEAD GASKET | 0409-2 | (S/N'S -XXXXXX) | 1810-6 |
| CYLINDER LINER | 0403-2 | DEFROST LOUVERS | |
| CYLINDER LINER KIT | 0403-2 | (S/N'S XXXXXX-) | 1810-7A |
| CYLINDER, ANGLE HYDRAULIC | 3265-4 | DEFROST LOUVERS | |
| CYLINDER, BLADE ANGLE (450J) | | (S/N'S XXXXXX-) | 1810-7C |
| (SN -102817) | 3265-10 | DEFROST LOUVERS | |
| CYLINDER, BLADE ANGLE (450J) | | (S/N'S XXXXXX-) | 1810-7E |
| (SN XXXXXX-) | 3265-13A | DEFROST LOUVERS | |
| CYLINDER, BLADE ANGLE (450J) | | (S/N'S XXXXXX-) | 1810-7G |
| (SN 102818-XXXXXX) | 3265-12 | DESIGNATION LABEL, HYDRAULIC AND | |
| CYLINDER, BLADE TILT | 3265-6 | HYDROSTATIC OIL TANK 10W30 | 1322-2 |
| CYLINDER, HYDROSTATIC SERVO CAN | 0355-2 | DIAGNOSTIC PLUMBING, HYDROSTATIC/ TRANSMISSION | 0363-4 |
| CYLINDER, LIFT | 3265-8 | DIODE CONNECTOR, CAB HARNESS | 1674-6 |
| CYLINDER, LIFT HYDRAULIC | 3265-4 | DIODE CONNECTOR, ROPS HARNESS | 1674-8 |
| CYLINDER, STARTING AID FLUID | | DIPSTICK, ENGINE OIL | 0407-1 |
| COLD WEATHER/ETHER | 0505-2 | DISCONNECT LABEL | 1322-2 |
| CYLINDER, BLADE ANGLE (550J AND 650J) | 3265-14 | DISCONNECT SWITCH CABLE, MASTER | 1674-2 |
| | | DISCONNECT SWITCH MASTER | 1674-2 |
| D | | DOME LAMP AND BULB, CAB | |
| DASH AND MONITOR | 1676-8 | (S/N'S -XXXXXX) | 1810-4 |
| DASH AND MONITOR WITH 650J INTEGRATED | | DOME LAMP AND BULB, CAB | |
| GRADE CONTROL | 1676-3A | (S/N'S XXXXXX-) | 1810-7A |
| DASH PANEL, LOWER | 1810-2 | DOME LAMP AND BULB, CAB | |
| DASH PANEL, LOWER | | (S/N'S XXXXXX-) | 1810-7E |
| (S/N'S -XXXXXX) | 1810-6 | DOME LIGHT | |
| DASH PANEL, LOWER | | (S/N'S -XXXXXX) | 1810-6 |
| (S/N'S XXXXXX-) | 1810-7C | DOME LIGHT | |
| DASH PANEL, LOWER | | (S/N'S XXXXXX-) | 1810-7C |
| (S/N'S XXXXXX-) | 1810-7G | DOME LIGHT | |
| DECAL, BLADE TORQUE AND SHIM (ENGLISH, FRENCH, SPANISH) | 3201-2 | (S/N'S XXXXXX-) | 1810-7G |
| DECAL, HEATER AND FAN CONTROL | 1322-2 | DOOR BUMPER | 1813-4 |
| DECAL, HEATER AND FAN CONTROL | | DOOR CLIPS/CLAMPS, CAB HARNESS | 1674-6 |
| (S/N'S -XXXXXX) | 1810-4 | DOOR FRAME AND GLASS, CAB | 1813-2 |
| DECAL, HEATER AND FAN CONTROL | | DOOR HOLD OPEN, CAB | 1813-4 |
| (S/N'S -XXXXXX) | 1810-6 | DOOR LATCH COVER, CAB | 1813-2 |
| DECAL, HEATER AND FAN CONTROL | | DOOR LATCH LEVER | 1813-2 |
| (S/N'S XXXXXX-) | 1810-7A | DOOR LATCH, CAB | 1813-2 |
| DECAL, HEATER AND FAN CONTROL | | DOOR OUTER HANDLE | 1813-2 |
| (S/N'S XXXXXX-) | 1810-7C | DOOR WINDOW WIPERS | 1814-10 |
| DECAL, HEATER AND FAN CONTROL | | DOOR, CAB | 1813-2 |
| (S/N'S XXXXXX-) | 1810-7E | DOOR, HOLD OPEN LATCH CAB | 1813-4 |
| DECAL, HEATER AND FAN CONTROL | | DOOR, HOOD SERVICE | 1911-2 |
| (S/N'S XXXXXX-) | 1810-7G | DOOR, HYDRAULIC RESERVOIR | 2164-2 |
| DECALS (FRENCH AND SPANISH) | 1322-4 | DOOR, HYDROSTATIC RESERVOIR | 0364-4 |
| DECALS AND LABELS (ENGLISH) | 1322-2 | DOORS, CAB AND LATCHES | 1813-2 |
| DECELERATOR/BRAKE PEDAL | 0515-4 | DOUBLE-FLANGE TRACK ROLLER | 0133-2 |
| DECELERATOR/BRAKE SENSOR, ROTARY | 0515-4 | DRAIN COCK RADIATOR(450J AND 550J) | 0511-6 |
| DECELERATOR/BRAKE SHAFT | 0515-4 | DRAIN COCK RADIATOR(650J) | 0511-10 |
| DECELERATOR/BRAKE SUPPORT | 0515-4 | DRAIN HOSE, ENVIRONMENTAL ENGINE | 2163-10 |
| DECORATIVE GREY CIRCLE LABEL | 1810-2 | DRAIN HOSE, HYDROSTATIC MOTOR | 0363-14 |
| DEERE LABEL (ON BACK OF FUEL TANK) | 1322-2 | DRAIN PAN FOAM, UPPER HEATER | 1831-8 |
| DEERE LABEL (ON BACK OF FUEL TANK) | | DRAIN PLUG GUARDING, FINAL DRIVE | 0201-6 |
| (S/N'S -XXXXXX) | 1810-4 | DRAIN VALVE CAB HEATER PLUMBING | 1831-6 |
| DEERE LABEL (ON BACK OF FUEL TANK) | | DRAIN VALVE, FUEL TANK | 0564-2 |
| (S/N'S XXXXXX-) | 1810-7A | DRAIN VALVE, HYDRAULIC, HYDROSTATIC AND ENGINE | 2163-10 |
| DEERE LABEL (ON BACK OF FUEL TANK) | | DRAWBAR | 1511-4 |
| (S/N'S XXXXXX-) | 1810-7E | DRAWBAR PIN (EXTENDED RIGID) | 1511-2 |
| DEFLECTOR GRID, SAND SHIELD | 0511-12 | DRAWBAR PIN 4000S WINCH | 1511-6 |
| DEFLECTOR LIGHT | 1673-6 | DRAWBAR 4000S WINCH | 1511-6 |
| DEFLECTOR LIGHT CAB HI-INTENSITY | 1673-8 | DRAWBAR, STANDARD (EXTENDED RIGID) | 1511-2 |
| DEFROST LOUVERS | | DRIVE BELT | 0429-1 |
| (S/N'S -XXXXXX) | 1810-4 | DRIVE BELT WITHOUT AIR CONDITIONING) | 0512-2 |
| | | DRIVE GEAR SERVICE KIT, FINAL (SERIAL NO. -108451) | 0201-8 |

ALPHABETICAL INDEX - CONTINUED

| | PAGE | | PAGE |
|--|---------|--|---------|
| DRIVE SHAFT, UNIVERSAL FINAL | 0201-2 | ENGINE HARNESS RELAY WITH 650J | |
| DRIVE SHAFT, UNIVERSAL FINAL | 0201-3A | INTEGRADED GRADE START RELAY 12 VOLT) | 1674-28 |
| DRIVE SHAFT, UNIVERSAL FINAL | | ENGINE MAJOR OVERHAUL GASKET SET | 0452-2 |
| (CONTINUED)..... | 0201-4 | ENGINE OIL COOLER | 0419-2 |
| DRIVE SHAFT, UNIVERSAL FINAL | | ENGINE OIL DIPSTICK | 0407-1 |
| (CONTINUED)..... | 0201-5A | ENGINE OIL DIPSTICK TUBE | 0407-1 |
| DRIVE THRU-HYDRAULIC PUMP WITH SHAFT | 2161-6 | ENGINE OIL FILL CAP | 0402-3 |
| DRIVE, FAN | 0429-2 | ENGINE OIL FILLER ADAPTER..... | 0402-3 |
| DRIVES, FINAL..... | 0201-2 | ENGINE OIL FILLER CAP(450J)..... | 0521-2 |
| DRIVES, FINAL..... | 0201-3A | ENGINE OIL FILLER CAP(550J AND 650J) | 0521-6 |
| DRIVES, FINAL (CONTINUED)..... | 0201-4 | ENGINE OIL FILLER OPENING COVER | 0407-3 |
| DRIVES, FINAL (CONTINUED)..... | 0201-5A | ENGINE OIL FILLER TUBE | |
| DUCTWORK FOAM, AIR..... | 1810-7A | (550J AND 650J)..... | 0521-6 |
| DUCTWORK FOAM, AIR..... | 1810-7E | ENGINE OIL FILLER TUBE(450J)..... | 0521-2 |
| DUCTWORK FOAM, AIR (S/N'S -XXXXXX) | 1810-4 | ENGINE OIL FILTER..... | 0407-6 |
| | | ENGINE OIL FILTER HEADER..... | 0407-6 |
| | | ENGINE OIL PAN | |
| E | | (CAST IRON R121621) | 0407-4 |
| EDGE GUARD MOULDING..... | 3263-4 | ENGINE OIL PAN (STEEL METAL PAN) | |
| EDGE, BLADE CUTTING | 3201-2 | (ENGINE SN XXXXXX-)..... | 0407-8 |
| EDGE, BLADE CUTTING | 3201-4 | ENGINE OIL PAN DRAIN VALVE..... | 2163-10 |
| ELBOW, ENGINE VENTILATING | 0408-2 | ENGINE OIL PAN GASKET (STEEL METAL PAN) | |
| ELECTRICAL COIL, HYDROSTATIC MOTOR | | (ENGINE SN XXXXXX-)..... | 0407-8 |
| CONTROL..... | 0355-20 | ENGINE OIL PRESSURE SENDER WITH MONITOR | |
| ELECTRICAL RESISTOR, CAB HEATER | | AND GAUGE | 1674-16 |
| (UPPER)..... | 1831-8 | ENGINE OIL PRESSURE SENDER WITH MONITOR | |
| ELECTROHYDRAULIC CONTROL VALVE ANGLE | | ONLY | 1674-14 |
| SECTION (650J) | 3262-16 | ENGINE OIL PRESSURE SENSOR..... | 1674-26 |
| ELECTROHYDRAULIC CONTROL VALVE AUX | | ENGINE OIL PUMP | 0407-2 |
| SECTION (650J) | 3262-18 | ENGINE OIL PUMP GEAR | 0407-2 |
| ELECTROHYDRAULIC CONTROL VALVE LIFT | | ENGINE OIL PUMP HOUSING | 0407-2 |
| SECTION (650J) | 3262-12 | ENGINE OIL PUMP INTAKE..... | 0407-2 |
| ELECTROHYDRAULIC CONTROL VALVE TILT | | ENGINE OVERHAUL KIT | 0450-2 |
| SECTION (650J) | 3262-14 | ENGINE OVERHAUL KIT | 0452-2 |
| ELECTROHYDRAULIC CONTROLLER..... | 1674-6 | ENGINE PISTON | 0403-2 |
| ELECTRONIC SWITCH OVERHEAD CONTROL PANEL | | ENGINE SHORT BLOCK..... | 0404-4 |
| (S/N'S -XXXXXX) | 1810-4 | ENGINE SIDE SHIELDS RIGHT AND LEFT | 1912-2 |
| ELECTRONIC SWITCH OVERHEAD CONTROL PANEL | | ENGINE SIDE SHIELDS RIGHT AND LEFT (IGC) | 1912-4 |
| (S/N'S XXXXXX-)..... | 1810-7A | ENGINE SPEED LABEL | |
| ELECTRONIC SWITCH OVERHEAD CONTROL PANEL | | (S/N'S -XXXXXX) | 1810-4 |
| (S/N'S XXXXXX-) | 1810-7E | ENGINE SPEED LABEL | |
| ELEMENT, AIR CLEANER FILTER WITH | | (S/N'S XXXXX-)..... | 1810-7A |
| TURBOCHARGER (450J)..... | 0521-2 | ENGINE SPEED LABEL | |
| ELEMENT, AIR CLEANER W/ TURBOCHARGER | | (S/N'S XXXXX-)..... | 1810-7E |
| (550J AND 650J)..... | 0521-6 | ENGINE SPEED LABEL, SYSTEM WARM UP (IN | |
| ELEMENT, TRANSMISSION FILTER | 0364-2 | FRONT OF ENGINE SPEED CONTROL POD)..... | 1810-4 |
| ELEMENT,FINAL FUEL FILTER | 0420-4 | ENGINE SPEED LABEL, SYSTEM WARM UP (IN | |
| ELEMENT,PRIMARY FUEL FILTER | 0563-4 | FRONT OF ENGINE SPEED CONTROL POD)..... | 1810-7A |
| END BIT KIT | 3201-4 | ENGINE SPEED LABEL, SYSTEM WARM UP (IN | |
| END BIT, BLADE | 3201-2 | FRONT OF ENGINE SPEED CONTROL POD)..... | 1810-7E |
| END BIT, BLADE | 3201-4 | ENGINE SPEED POTENTIOMETER SWITCH | 1676-8 |
| END BIT, CUPPED | 3201-4 | ENGINE SPEED POTENTIOMETER SWITCH WITH | |
| END CAP | 0355-2 | 650J INTEGRADED GRADE CONTROL..... | 1676-3A |
| END CAP ASSEMBLY, HYDROSTATIC..... | 0355-10 | ENGINE SPEED SENSOR | 0402-4 |
| END PLATE, HYDROSTATIC MOTOR CONTROL | 0355-20 | ENGINE SPEED-REVERSE LABEL..... | 1810-7A |
| ENGINE BALANCER SHAFT | 0415-2 | ENGINE SPEED-REVERSE LABEL..... | 1810-7E |
| ENGINE CONTROL UNIT | 0575-2 | ENGINE SPEED-REVERSE LABEL | |
| ENGINE COOLANT HEATER | 0505-4 | (S/N'S -XXXXXX) | 1810-4 |
| ENGINE COOLANT HEATER POWER CORD..... | 0505-4 | ENGINE VENTILATING SYSTEM | 0408-2 |
| ENGINE COOLANT HEATING ELEMENT | 0505-4 | ENGINE WATER TEMPERATURE SENDER WITH | |
| ENGINE CRADLE/POWER TRAIN MOUNTING..... | 0540-2 | MONITOR AND GAUGE | 1674-16 |
| ENGINE FLYWHEEL | 0433-2 | ENGINE WATER TEMPERATURE SENDER WITH | |
| ENGINE FRONT PLATE | 0404-1 | MONITOR ONLY | 1674-14 |
| ENGINE HARNESS RELAY | | ENGINE WIRING HARNESS..... | 1674-10 |
| (START RELAY 12 VOLT) | 1674-10 | ENGINE WIRING HARNESS W/ 650J | |
| | | W/ INTEGRADED GRADE CONTROL | 1674-28 |

ALPHABETICAL INDEX - CONTINUED

| | PAGE | | PAGE |
|---|---------|--|---------|
| ENGINE WIRING HARNESS WITH 650J | | FILTER COVER PLATE | |
| INTEGRADED GRADE CONTROL | 1674-28 | (S/N'S XXXXXX-) | 1810-7E |
| ENGINE, ENVIRONMENTAL DRAIN HOSE | 2163-10 | FILTER ELEMENT, AIR CLEANER WITH | |
| ENVIRONMENTAL DRAIN VALVE | 2163-10 | TURBOCHARGER (450J) | 0521-2 |
| ENVIRONMENTAL ENGINE DRAIN HOSE | 2163-10 | FILTER HEAD, HYDRAULIC | 2164-4 |
| ETHER/COLD WEATHER STARTING AID | 0505-2 | FILTER HOSE, HYDRAULIC | |
| ETHER/COLD WEATHER/FLUID START AID | | (CONTROL VALVE TO HYDRAULIC FILTER) | 2163-6 |
| SWITCH | 1676-8 | FILTER HOSES, HYDROSTATIC | 0363-16 |
| EVAPORATOR CORE (UPPER) | 1831-8 | FILTER, AIR CLEANER WITH TURBOCHARGER | |
| EXHAUST MANIFOLD | 0410-2 | (550J AND 650J) | 0521-6 |
| EXHAUST MANIFOLD GASKET | 0410-2 | FILTER, CAB FRESH AIR | |
| EXHAUST MUFFLER | 0531-2 | (UPPER) | 1831-8 |
| EXHAUST STACK, CHROME MUFFLER | 1911-2 | FILTER, HYDRAULIC | 2164-4 |
| EXHAUST STACK, MUFFLER | 1911-2 | FILTER, HYDROSTATIC OR TRANSMISSION | 0364-2 |
| EXHAUST VALVE | 0409-2 | FILTER, PRIMARY FUEL | 0563-2 |
| | | FILTER, PRIMARY FUEL | 0563-4 |
| F | | FILTER, TRANSMISSION | 0364-2 |
| FAN AIR CONDITIONING CONDENSER | 1832-2 | FILTER, TRANSMISSION ELEMENT | 0364-2 |
| FAN BELT | 0512-2 | FILTER, TRANSMISSION HEAD | 0364-2 |
| FAN CONTROL AND HEATER DECAL | | FILTER, WATER PUMP | 0417-3 |
| (S/N'S -XXXXXX) | 1810-4 | FILTRATION MANIFOLD HYDROSTATIC PUMP | 0355-4 |
| FAN CONTROL AND HEATER DECAL | | FINAL DRIVE BRAKE PISTON | 0201-2 |
| (S/N'S -XXXXXX) | 1810-6 | FINAL DRIVE BRAKE PISTON | 0201-3A |
| FAN CONTROL AND HEATER DECAL | | FINAL DRIVE BRAKE PISTON | |
| (S/N'S XXXXXX-) | 1810-7A | (CONTINUED) | 0201-4 |
| FAN CONTROL AND HEATER DECAL | | FINAL DRIVE BRAKE PISTON | |
| (S/N'S XXXXXX-) | 1810-7C | (CONTINUED) | 0201-5A |
| FAN CONTROL AND HEATER DECAL | | FINAL DRIVE DRAIN PLUG GUARDS | 0201-6 |
| (S/N'S XXXXXX-) | 1810-7E | FINAL DRIVE GEAR SERVICE KIT | |
| FAN CONTROL AND HEATER DECAL | | (SER. NO. -108451) | 0201-8 |
| (S/N'S XXXXXX-) | 1810-7G | FINAL DRIVE INNER HOUSING | 0201-2 |
| FAN DRIVE | 0429-2 | FINAL DRIVE INNER HOUSING | 0201-3A |
| FAN DRIVE HOUSING | 0429-2 | FINAL DRIVE INNER HOUSING | |
| FAN DRIVE HUB | 0429-2 | (CONTINUED) | 0201-4 |
| FAN DRIVE PULLEY | 0429-2 | FINAL DRIVE INNER HOUSING | |
| FAN POLY RIB BELT, BLOWER (WITHOUT AIR | | (CONTINUED) | 0201-5A |
| CONDITIONING) | 0512-2 | FINAL DRIVE INPUT GEAR | 0201-2 |
| FAN PULLEY BLOWER | 0512-2 | FINAL DRIVE INPUT GEAR | 0201-3A |
| FAN SHROUD, RADIATOR(450J AND 550J) | 0511-6 | FINAL DRIVE INPUT GEAR | |
| FAN SHROUD, RADIATOR(650J) | 0511-10 | (CONTINUED) | 0201-4 |
| FAN SPACER, BLOWER | 0512-2 | FINAL DRIVE INPUT GEAR | |
| FAN, ALTERNATOR | 1672-2 | (CONTINUED) | 0201-5A |
| FAN, BLOWER | 0512-2 | FINAL DRIVE OUTER HOUSING | 0201-2 |
| FAN, HEATER BLOWER (UPPER) | 1831-8 | FINAL DRIVE OUTER HOUSING | 0201-3A |
| FAN, SHIELD RADIATOR(450J AND 550J) | 0511-6 | FINAL DRIVE OUTER HOUSING | |
| FAN, SHIELD RADIATOR(650J) | 0511-10 | (CONTINUED) | 0201-4 |
| FEEDBACK LINK, SWASHPLATE | 0355-14 | FINAL DRIVE OUTER HOUSING | |
| FENDER, BACK | 1927-2 | (CONTINUED) | 0201-5A |
| FENDER, REAR | 1927-2 | FINAL DRIVES | 0201-2 |
| FIELD KIT, AIR CONDITIONER | 1832-2 | FINAL DRIVES | 0201-3A |
| FIELD KIT, INTEGRATED GRADE CONTROL | | FINAL DRIVES (CONTINUED) | 0201-4 |
| AUXILIARY JOYSTICK AND VALVE | 3262-22 | FINAL DRIVES (CONTINUED) | 0201-5A |
| FILLER PLUG, HYDRAULIC RESERVOIR | 2164-2 | FINAL DRIVES BRAKE | 0201-2 |
| FILTER BRACKET, HYDRAULIC | 2164-4 | FINAL DRIVES BRAKE | 0201-3A |
| FILTER COVER PLATE | | FINAL DRIVES BRAKE | |
| (S/N'S -XXXXXX) | 1810-4 | (CONTINUED) | 0201-4 |
| FILTER COVER PLATE | | FINAL DRIVES BRAKE | |
| (S/N'S -XXXXXX) | 1810-6 | (CONTINUED) | 0201-5A |
| FILTER COVER PLATE | | FINAL FUEL FILTER | 0420-4 |
| (S/N'S XXXXXX-) | 1810-7C | FINAL FUEL FILTER ELEMENT | 0420-4 |
| FILTER COVER PLATE | | FINAL FUEL FILTER FUEL LINES | 0420-2 |
| (S/N'S XXXXXX-) | 1810-7G | FINAL FUEL FILTER HEATER | 0420-4 |
| FILTER COVER PLATE | | FINAL FUEL FILTER SERVICE KIT | 0420-4 |
| (S/N'S XXXXXX-) | 1810-7A | FITTING, AIR CONDITIONING CHARGE | 1832-4 |
| | | FITTINGS (AIR SUSPENSION) | 1821-28 |
| | | FLANGE, PULLEY | 0429-1 |
| | | FLANGED AXLE SHAFT SEAL | 0201-2 |

ALPHABETICAL INDEX - CONTINUED

| | PAGE | | PAGE |
|---|---------|--|---------|
| FLANGED AXLE SHAFT SEAL..... | 0201-3A | FUSE COVER PLATE - CAB | |
| FLANGED AXLE SHAFT SEAL | | (S/N'S -XXXXXX) | 1810-4 |
| (CONTINUED)..... | 0201-4 | FUSE COVER PLATE - CAB | |
| FLANGED AXLE SHAFT SEAL | | (S/N'S XXXXXX-) | 1810-7A |
| (CONTINUED)..... | 0201-5A | FUSE COVER PLATE - CAB | |
| FLOOR MAT | 1810-10 | (S/N'S XXXXXX-) | 1810-7E |
| FLOOR PLATE SEAL | 1810-8 | FUSE, CIGAR LIGHTER..... | 2006-2 |
| FLUID/COLD WEATHER/ETHER START AID | | FUSEBLOCK LABEL, CAB..... | 1674-6 |
| SWITCH | 1676-8 | FUSEBLOCK LABEL, CAB | |
| FLY WHEEL COVER..... | 0540-2 | (S/N'S -XXXXXX) | 1810-6 |
| FLYWHEEL COUPLER..... | 0325-2 | FUSEBLOCK LABEL, CAB | |
| FLYWHEEL HOUSING | 0433-3 | (S/N'S XXXXXX-) | 1810-7C |
| FLYWHEEL RING GEAR..... | 0433-2 | FUSEBLOCK LABEL, CAB | |
| FLYWHEEL, ENGINE | 0433-2 | (S/N'S XXXXXX-) | 1810-7G |
| FOAM/ISOLATOR, CAB NOISE REDUCTION | 1807-2 | FUSEBLOCK LABEL, ROPS | 1674-8 |
| FOAM, AIR DUCTWORK..... | 1810-7A | FUSEBOX BRACKET WITH INTEGRATED GRADE | |
| FOAM, AIR DUCTWORK..... | 1810-7E | CONTROL 650J | 1674-30 |
| FOAM, AIR DUCTWORK (S/N'S -XXXXXX) | 1810-4 | FUSES VEHICLE HARNESS W/650J | |
| FOAM, UPPER HEATER DRAIN PAN..... | 1831-8 | W/ INTEGRATED GRADE CONTROL | 1674-30 |
| FOOTREST, CAB..... | 1810-8 | FUSES, CIRCUIT BREAKER AND ELECTRICAL | |
| FORWARD GUARD..... | 1741-2 | RELAYS/CAB..... | 1674-22 |
| FORWARD, NEUTRAL AND REVERSE LABEL | 1322-2 | FUSES, CIRCUIT BREAKER AND ELECTRICAL | |
| FORWARD, NEUTRAL, REVERSE LABEL..... | 0315-6 | RELAYS/ROPS..... | 1674-24 |
| FORWARD, NEUTRAL, REVERSE LABEL | | | |
| (CONTINUED)..... | 0315-8 | | |
| FRAME STEP | 3243-4 | G | |
| FRAME, MAIN CONVENIENCE ASSEMBLY | 1741-2 | GASKET KIT, HYDRAULIC PUMP | 2161-2 |
| FRAME, CAB DOOR AND GLASS | 1813-2 | GASKET SET,ENGINE MAJOR OVERHAUL | 0452-2 |
| FRAME, HEAVY DUTY..... | 3243-2 | GASKET, CYLINDER HEAD..... | 0409-2 |
| FRAME, STANDARD | 3243-2 | GASKET, ENGINE OIL PAN (STEEL METAL PAN) | |
| FRAME, TRACK | 0131-2 | (ENGINE SN XXXXXX-) | 0407-8 |
| FRAME, XLT | 3243-2 | GASKET, HYDROSTATIC END CAP | 0355-10 |
| FRENCH AND SPANISH LABELS AND DECALS..... | 1322-4 | GASKET, TIMING GEAR COVER..... | 0402-4 |
| FRENCH OR SPANISH LABEL AND DECAL KIT | 1322-4 | GASKET, TURBOCHARGER | 0416-2 |
| FRESH AIR FILTER, CAB | | GASKET,EXHAUST MANIFOLD..... | 0410-2 |
| (UPPER)..... | 1831-8 | GASKET,OIL PAN | |
| FRONT ACCESS PLATE, CAB..... | 1810-8 | (W/CAST IRON R121621)..... | 0407-4 |
| FRONT AXIAL PISTON HYDROSTATIC PUMP | 0355-2 | GASKET,ROCKER ARM COVER | 0402-3 |
| FRONT CHAIN GUIDE SLIDE (WELDED ON | | GEAR, CAMSHAFT | 0402-1 |
| COMPONENT)..... | 0131-2 | GEAR, CRANKSHAFT..... | 0401-2 |
| FRONT COUNTERWEIGHT | 1749-2 | GEAR, ENGINE OIL PUMP | 0407-2 |
| FRONT HYDROSTATIC PUMP | 0355-2 | GLASS, CAB DOOR FRAME..... | 1813-2 |
| FRONT PLATE, ENGINE | 0404-1 | GLASS, FRONT WINDOW | 1814-2 |
| FRONT ROPS HEADLINER..... | 1810-2 | GLASS, REAR WINDOW..... | 1814-2 |
| FRONT TRACK CHAIN IDLER AND BRACKETS | 0133-6 | GRADE CONTROL CAB HARNESS | 1674-6 |
| FRONT WINDOW GLASS | 1814-2 | GRADE CONTROL LEVER (AUXILIARY JOYSTICK) | |
| FRONT WORK LAMP PLATE | 1673-4 | FIELD KIT | 3262-22 |
| FUEL FILTER, PRIMARY..... | 0563-2 | GRADE CONTROL LEVER (JOYSTICK) | |
| FUEL FILTER,FINAL..... | 0420-4 | INTEGRATED/PILOT ENABLE SWITCH | 3262-20 |
| FUEL FIRED COOLANT HEATER KIT..... | 0505-8 | GRID, SAND SHIELD DEFLECTOR..... | 0511-12 |
| FUEL FIRED COOLANT HEATER KIT | | GRILLE HOSE GUARD | 1921-2 |
| (HYDRONIC 5 SERIES HEATER) | 0505-10 | GRILLE HOUSING, STANDARD | 1921-2 |
| FUEL INJECTION LINES | 0413-2 | GRILLE WIRING HARNESS..... | 1674-10 |
| FUEL INJECTION PUMP | 0413-2 | GRILLE WIRING HARNESS W/INTEGRATED | |
| FUEL INJECTION PUMP, REMANUFACTURED | 0413-2 | GRADE CONTROL 650J | 1674-28 |
| FUEL INJECTION SEAL..... | 0413-1 | GRILLE, HEAVY DUTY..... | 1921-4 |
| FUEL LINES | 0563-2 | GRILLE, STANDARD | 1921-2 |
| FUEL LINES,FINAL FUEL FILTER | 0420-2 | GRIP CONTROLLER HANDLE SINGLE LEVER | |
| FUEL RETURN LINE..... | 0413-2 | CONTROL | 0315-6 |
| FUEL SHUT OFF VALVE | 0563-2 | GRIP CONTROLLER HANDLE SINGLE LEVER | |
| FUEL TANK..... | 0564-2 | CONTROL (CONTINUED) | 0315-8 |
| FUEL TANK DRAIN VALVE..... | 0564-2 | GROUND SPEED LABEL..... | 0315-6 |
| FUEL TANK FILLER CUP..... | 0564-2 | GROUND SPEED LABEL | |
| FUEL TANK, FUEL SENDER | 0564-2 | (CONTINUED)..... | 0315-8 |
| FUEL TRANSFER PUMP | 0421-1 | GROUND STRAP BATTERY | 1671-4 |
| FUSE COVER PLATE | 1810-2 | GROUND STRAP, BATTERY | 1671-2 |

000I-18

450J/550J/650J CRAWLER

ALPHABETICAL INDEX - CONTINUED

| | PAGE | | PAGE |
|--|---------|---|---------|
| GROUND STRAP, MICROPROCESSOR | | HARNES, ROPS..... | 1674-8 |
| TRANSMISSION CONTROL..... | 0375-2 | HARNES, ROPS WORK LIGHT..... | 1673-6 |
| GROUND STRAP, STARTER (CAB HARNES)..... | 1674-6 | HARNES, STARTER TERMINAL JUMPER WITH | |
| GROUND STRAP, STARTER (ROPS HARNES)..... | 1674-8 | 650J INTEGRATED GRADE CONTROL..... | 1674-28 |
| GUARD REAR..... | 1741-2 | HARNES, TRANSMISSION..... | 1674-4 |
| GUARD, AIR CONDITIONING PLUMBING | | HARNES, UNDER SEAT ROPS AND CAB HEATER | |
| (S/N'S -XXXXXX)..... | 1810-4 | WIRING..... | 1831-2 |
| GUARD, AIR CONDITIONING PLUMBING | | HARNES, VEHICLE WIRING WITH 650J | |
| (S/N'S XXXXXX)..... | 1810-6 | INTEGRATED GRADE CONTROL..... | 1674-30 |
| GUARD, AIR CONDITIONING PLUMBING | | HARNES, WITH SWITCH AND COVER SINGLE | |
| (S/N'S XXXXXX-)..... | 1810-7A | LEVER CONTROL WITH SPEEDIN GRIP..... | 0315-6 |
| GUARD, AIR CONDITIONING PLUMBING | | HARNES, WORK LIGHT WIRING..... | 1673-4 |
| (S/N'S XXXXXX-)..... | 1810-7C | HCU..... | 1674-6 |
| GUARD, AIR CONDITIONING PLUMBING | | HEAD END PIN, ANGLE CYLINDER..... | 3243-2 |
| (S/N'S XXXXXX-)..... | 1810-7E | HEAD END PIN, LIFT CYLINDER..... | 3265-4 |
| GUARD, AIR CONDITIONING PLUMBING | | HEAD END PIN, TILT CYLINDER..... | 3201-4 |
| (S/N'S XXXXXX-)..... | 1810-7G | HEAD, CYLINDER..... | 0409-2 |
| GUARD, C-FRAME HOSE..... | 1921-4 | HEAD, HYDRAULIC FILTER..... | 2164-4 |
| GUARD, CENTER..... | 1741-2 | HEAD, TRANSMISSION FILTER..... | 0364-2 |
| GUARD, CYLINDER..... | 3265-4 | HEADER, ENGINE OIL FILTER..... | 0407-6 |
| GUARD, FORWARD..... | 1741-2 | HEADER, PRIMARY FUEL FILTER..... | 0563-4 |
| GUARD, HEAVY DUTY HOSE..... | 1921-4 | HEADLINER, CAB FRONT (WITH LOUVERS) | |
| GUARD, LIGHT HARNES..... | 1673-6 | (S/N'S -XXXXXX)..... | 1810-4 |
| GUARD, TRACK DRIVE SPROCKET..... | 0132-14 | HEADLINER, CAB FRONT (WITH LOUVERS) | |
| GUARD, WIRING HARNES..... | 1673-8 | (S/N'S XXXXXX-)..... | 1810-7A |
| GUARDING, FINAL DRIVE DRAIN PLUG..... | 0201-6 | HEADLINER, CAB FRONT (WITH LOUVERS) | |
| GUARDS, ROCK..... | 0131-10 | (S/N'S XXXXXX-)..... | 1810-7E |
| GUARDS, ROCK 450J LONG TRACK AND LOW | | HEADLINER, INTERIOR CAB LIGHT | |
| GROUND PRESSURE..... | 0131-10 | (S/N'S -XXXXXX)..... | 1810-4 |
| GUIDE SLIDE, FRONT CHAIN (WELDED ON | | HEADLINER, INTERIOR CAB LIGHT | |
| COMPONENT)..... | 0131-2 | (S/N'S XXXXXX-)..... | 1810-7A |
| GUIDE, IDLER..... | 0133-6 | HEADLINER, INTERIOR CAB LIGHT | |
| GUIDES, CHAIN..... | 0131-6 | (S/N'S XXXXXX-)..... | 1810-7E |
| GUIDES, CHAIN 650J..... | 0131-12 | HEADLINER, REAR (WITH LOUVERS) | |
| | | (S/N'S -XXXXXX)..... | 1810-6 |
| | | HEADLINER, REAR (WITH LOUVERS) | |
| | | (S/N'S XXXXXX-)..... | 1810-7C |
| | | HEADLINER, REAR (WITH LOUVERS) | |
| | | (S/N'S XXXXXX-)..... | 1810-7G |
| | | HEADLINER, REAR ROPS..... | 1810-2 |
| | | HEADLINER, ROPS..... | 1810-2 |
| | | HEADREST(DELUXE)..... | 1821-12 |
| | | HEATER AND AIR CONDITIONER BLOWER SWITCH..... | 1832-2 |
| | | HEATER AND AIR CONDITIONER BLOWER SWITCH | |
| | | (S/N'S -XXXXXX)..... | 1810-6 |
| | | HEATER AND AIR CONDITIONER BLOWER SWITCH | |
| | | (S/N'S XXXXXX-)..... | 1810-7C |
| | | HEATER AND AIR CONDITIONER BLOWER SWITCH | |
| | | (S/N'S XXXXXX-)..... | 1810-7G |
| | | HEATER AND AIR CONDITIONER BLOWER SWITCH | |
| | | (UPPER)..... | 1831-8 |
| | | HEATER AND AIR CONDITIONER TEMPERATURE | |
| | | SWITCH..... | 1832-2 |
| | | HEATER AND AIR CONDITIONER TEMPERATURE | |
| | | SWITCH (UPPER)..... | 1831-8 |
| | | HEATER AND AIR CONDITIONER TEMPERATURE | |
| | | SWITCH (S/N'S XXXXXX-)..... | 1810-7C |
| | | HEATER AND AIR CONDITIONER TEMPERATURE | |
| | | SWITCH (S/N'S XXXXXX-)..... | 1810-7G |
| | | HEATER AND AIR CONDITIONER TEMPERATURE | |
| | | SWITCH(S/N'S -XXXXXX)..... | 1810-6 |
| | | HEATER AND FAN CONTROL DECAL..... | 1322-2 |
| | | HEATER AND FAN CONTROL DECAL | |
| | | (S/N'S -XXXXXX)..... | 1810-4 |
| | | HEATER AND FAN CONTROL DECAL | |
| | | (S/N'S -XXXXXX)..... | 1810-6 |

H

| | |
|---|---------|
| HANDLE GRIP, CAB DOOR HOLD OPEN..... | 1813-4 |
| HANDLE, DOOR OUTER..... | 1813-2 |
| HANDLE, T-BAR CONTROL..... | 3215-2 |
| HARDWARE KIT, A/C COMPRESSOR..... | 1832-10 |
| HARNES (AIR SUSPENSION) COMPRESSOR SEAT | |
| WIRING(SN.-XXXXXX)..... | 1821-26 |
| HARNES (AIR SUSPENSION), SEAT POWER | |
| (SN.-XXXXXX)..... | 1821-26 |
| HARNES AIR CONDITIONING CONDENSER | |
| WIRING..... | 1832-2 |
| HARNES GUARD, LIGHT..... | 1673-6 |
| HARNES GUARD, WIRING..... | 1673-8 |
| HARNES, ALTERNATOR WITH 650J INTEGRATED | |
| GRADE CONTROL..... | 1674-28 |
| HARNES, CAB..... | 1674-6 |
| HARNES, CAB HEATER WIRING | |
| (UPPER)..... | 1831-8 |
| HARNES, CAB WORK LIGHT..... | 1673-8 |
| HARNES, ENGINE WIRING..... | 1674-10 |
| HARNES, ENGINE WIRING WITH 650J | |
| INTEGRATED GRADE CONTROL..... | 1674-28 |
| HARNES, GRILLE WIRING..... | 1674-10 |
| HARNES, GRILLE WIRING W/INTEGRATED | |
| GRADE CONTROL 650J..... | 1674-28 |
| HARNES, HORN WIRING..... | 1674-20 |
| HARNES, INTERGRATED GRADE CONTROL..... | 1674-6 |
| HARNES, POWER PLUG..... | 2006-2 |
| HARNES, RADIO WIRING..... | 2001-2 |
| HARNES, REAR WIPER MOTOR WIRING..... | 1814-8 |