

Use and maintenance manual

John - Deere POWERTECH 2.9L 3029 OEM Diesel Engines

Réf. constructeur : OMRG27897

Réf. GPAO : 33522042901

Introduction

FOREWORD

THIS MANUAL CONTAINS INFORMATION to operate and service the following engines:

Saran-built (France) Emission Non-Certified Engines:

- CD3029DF120
- CD3029DF121
- CD3029DF122
- CD3029DF123
- CD3029DF124
- CD3029DF160
- CD3029DF161
- CD3029DF162
- CD3029DF163
- CD3029DF164
- CD3029DF165
- CD3029TF120
- CD3029TF121
- CD3029TF123
- CD3029TF160
- CD3029TF161
- CD3029TF162
- CD3029TF163

Saran-built (France) Emission Certified Engines:

- CD3029DF150
- CD3029DF151
- CD3029DF152
- CD3029DF180
- CD3029TF150
- CD3029TF152
- CD3029TF180

Torreon-built (Mexico) Emission Non-Certified Engines:

- PE3029DF120
- PE3029TF120

Torreon-built (Mexico) Emission Certified Engines:

- PE3029DF150
- PE3029TF150

IMPORTANT: This manual replaces two Operation and Maintenance Manuals, OMRG27897 (30JAN98) and OMRG24311 (30AUG96) (Cancelled).

READ THIS MANUAL carefully to learn how to operate and service your machine correctly. Failure to do so could result in personal injury or equipment damage.

THIS MANUAL SHOULD BE CONSIDERED a permanent part of your machine and should remain with the machine when you sell it.

MEASUREMENTS IN THIS MANUAL are given in both metric and customary U.S. unit equivalents. Use only correct replacement parts and fasteners. Metric and inch fasteners may require a specific metric or inch wrench.

WRITE ENGINE SERIAL NUMBERS and option codes in the spaces indicated in the Record Keeping Section. Accurately record all the numbers. Your dealer also needs these numbers when you order parts. File the identification numbers in a secure place off the engine.

SETTING FUEL DELIVERY beyond published factory specifications or otherwise overpowering will result in loss of warranty protection for this engine.

CERTAIN ENGINE ACCESSORIES such as radiator, air cleaner, and instruments are optional equipment on John Deere OEM Engines. These accessories may be provided by the equipment manufacturer instead of John Deere. This operator's manual applies only to the engine and those options available through the John Deere distribution network.

CALIFORNIA PROPOSITION 65 WARNING
Diesel engine exhaust and some of its constituents are known to the State of California to cause cancer, birth defects and other reproductive harm.

ENGINE OWNER

John Deere Engine Owner:

Don't wait until you need warranty or other service to meet your local John Deere Engine Distributor or Service Dealer.

Learn who he is and where he is. At your first convenience, go meet him. He'll want to get to know you and to learn what your needs might be.

Aux Utilisateurs De Moteurs John Deere:

N'attendez pas d'être obligé d'avoir recours à votre concessionnaire John Deere ou point de service le plus proche pour vous adresser à lui.

Renseignez-vous dès que possible pour l'identifier et le localiser. À la première occasion, prenez contact avec lui et faites-vous connaître. Il sera lui aussi heureux de faire votre connaissance et de vous proposer ses services le moment venu.

An Den Besitzer Des John Deere Motors:

Warten Sie nicht auf einen evt. Reparaturfall um den nächstgelegenen John Deere Händler kennen zu lernen.

Machen Sie sich bei ihm bekannt und nutzen Sie sein "Service Angebot".

Proprietario Del Motore John Deere:

Non aspetti fino a quando ha bisogno della garanzia o di un altro tipo di assistenza per incontrarsi con il Suo Concessionario che fornisce l'assistenza tecnica.

Impari a conoscere chi è e dove si trova. Alla Sua prima occasione cerchi d'incontrarlo. Egli desidera farsi conoscere e conoscere le Sue necessità.

Propietario De Equipo John Deere:

No espere hasta necesitar servicio de garantía o de otro tipo para conocer a su Distribuidor de Motores John Deere o al Concesionario de Servicio.

Entérese de quién es, y dónde está situado. Cuando tenga un momento, vaya a visitarlo. A él le gustará conocerlo, y saber cuáles podrían ser sus necesidades.

John Deere MotorÄgare:

Vänta inte med att besöka Din John Deere återförsäljare till dess att Du behöver service eller garanti reparation.

Bekanta Dig med var han är och vem han är. Tag första tillfälle att besöka honom. Han vill också träffa Dig för att få veta vad Du behöver och hur han kan hjälpa Dig.

IDENTIFICATION VIEWS



3029D Right Front View

RG9173 -UN-29NOV00



3029D Left Front View

RG9172 -UN-29NOV00

RG, RG34710, 4501 -19-30JAN98-1/2



3029T Right Front View

RG9175 -UN-29NOV00



3029T Left Front View

RG9174 -UN-29NOV00

RG, RG34710, 4501 -19-30JAN98-2/2

Contents

	Page		Page
Record Keeping		Idling Engine	15-17
Engine Serial Number Plate	01-1	Stopping the Engine	15-18
Record Engine Serial Number	01-1	Using a Booster Battery or Charger	15-20
Engine Option Codes	01-2		
Record Fuel Injection Pump Model Number	01-4	Lubrication and Maintenance	
		Observe Service Intervals.	20-1
Safety	05-1	Use Correct Fuels, Lubricants, and Coolant	20-2
		Lubrication and Maintenance Service	
Fuels, Lubricants, and Coolant		Interval - Prime Power Engines.	20-3
Diesel Fuel	10-1	Lubrication and Maintenance Service	
Lubricity of Diesel Fuel	10-1	Interval - Standby Power.	20-5
Diesel Fuel Storage	10-2		
DIESELSCAN Fuel Analysis.	10-2	Lubrication & Maintenance/Daily	
Minimizing the Effect of Cold Weather on		Daily Prestarting Checks	25-1
Diesel Engines	10-3		
Diesel Engine Break-In Oil	10-4	Lubrication and Maintenance/250 Hour	
Diesel Engine Oil	10-5	Servicing Fire Extinguisher	30-1
Extended Diesel Engine Oil Service Interval. . . .	10-6	Lubricating PTO Clutch Shaft Bearings	30-1
Mixing of Lubricants	10-6	Servicing Battery	30-2
OILSCAN and COOLSCAN	10-7	Handling Batteries Safely	30-3
Alternative and Synthetic Lubricants.	10-7	Changing Engine Oil and Replacing Oil Filter. . . .	30-4
Lubricant Storage.	10-8	Checking Fan and Alternator V-Belt Tension . . .	30-7
Grease	10-8	Checking PTO Clutch Adjustment.	30-9
Diesel Engine Coolant	10-9	Checking Engine Mounts (Generator Sets). . . .	30-10
Diesel Engine Coolants, Supplemental			
Additive Information	10-10	Lubrication & Maintenance/500 Hour	
Testing Diesel Engine Coolant	10-11	Adjusting Engine Valve Clearance (New or	
Replenishing Supplemental Coolant		Rebuilt Engines)	35-1
Additives Between Coolant Changes	10-12		
Operating in Warm Temperature Climates	10-13	Lubrication & Maintenance/500Hour/12 Month	
Disposing of Coolant	10-13	Lubricating PTO Clutch Internal Levers and	
		Linkage	40-1
Engine Operating Guidelines		Cleaning Crankcase Vent Tube	40-1
Instrument (Gauge) Panels.	15-1	Checking Air Intake System	40-2
Normal Engine Operation	15-7	Replacing Fuel Filter Element.	40-3
Break-In Service.	15-8	Checking Cooling System.	40-5
Auxiliary Gear Drive Limitations	15-12	Testing Diesel Engine Coolant	40-6
Generator Sets (Standby) Applications.	15-12	Replenishing Supplemental Coolant	
Starting the Engine.	15-12	Additives (SCAs) Between Coolant	
Cold Weather Operation.	15-15	Changes	40-7
Warming Engine.	15-16	Pressurue Testing Cooling System.	40-9
Changing Engine Speed-Standard			
(Mechanical) Governor	15-17		

Continued on next page

All information, illustrations and specifications in this manual are based on the latest information available at the time of publication. The right is reserved to make changes at any time without notice.

COPYRIGHT © 2001
DEERE & COMPANY
Moline, Illinois
All rights reserved
A John Deere ILLUSTRATION® Manual
Previous Editions
Copyright © 1998

Page

Page

Lubrication&Maintenance/1500 Hour/24 Month

Checking and Adjusting Engine Valve
 Clearance 45-1
 Adjusting Variable Speed on Generator Set
 Engines. 45-4
 Flushing and Refilling Cooling System 45-5
 Testing Thermostat Opening Temperature 45-8

Service, 500 Hour/12 Month. 70-3
 Service, 1500 Hour/24 Month. 70-4
 Service as Required. 70-5

Emission System Warranty

Emissions Control System Certification Label. . . 75-1
 U.S. Emissions Control Warranty Statement. . . 75-2

Service As Required

Additional Service Information 50-1
 Do Not Modify Fuel System 50-1
 Adding Coolant. 50-2
 Bleeding the Fuel System. 50-3
 Replacing Air Cleaner Filter Elements 50-5
 Inspecting Primary Filter Element. 50-7
 Cleaning Primary Filter Element 50-7
 Element Storage. 50-8
 Replace Fan and Alternator Belts. 50-8
 Power Take-Off (PTO) Clutch. 50-9
 Checking Fuses 50-9

Troubleshooting

General Troubleshooting Information 55-1
 North American Wiring Diagram 55-2
 Engine Troubleshooting 55-4
 Electrical Troubleshooting. 55-12
 Lubrication Troubleshooting 55-14
 Cooling System Troubleshooting 55-16
 Air Intake Troubleshooting 55-18

Storage

Engine Storage Guidelines. 60-1
 Use AR41785 Engine Storage Kit. 60-1
 Preparing Engine for Long Term Storage. 60-2
 Removing Engine from Long Term Storage 60-3

Specifications

General OEM Engine Specifications. 65-1
 Fuel Injection Pump
 Specifications-Emission Certified Engines. . . . 65-2
 Fuel Injection Pump
 Specifications-Emission Non-Certified
 Engines. 65-3
 Engine Crankcase Oil Fill Quantities 65-5
 Unified Inch Bolt and Cap Screw Torque
 Values. 65-8
 Metric Bolt and Cap Screw Torque Values. . . . 65-9

Lubrication and Maintenance Records

Using Lubrication and Maintenance Records . . . 70-1
 Daily (Prestarting) Service 70-1
 Service, 50 Hour/Every 2 Weeks 70-2
 Service, 500 Hours. 70-3

Record Keeping

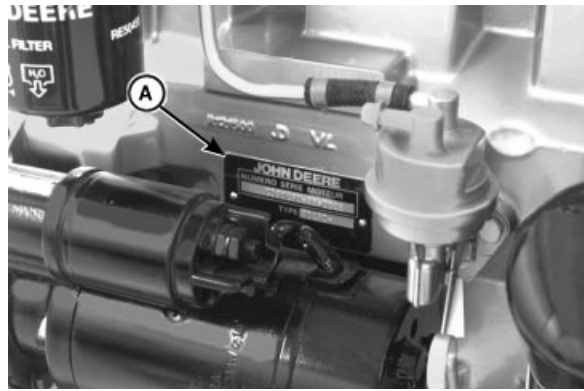
ENGINE SERIAL NUMBER PLATE

Each engine has a 13-digit John Deere engine serial number. The first two digits identify the factory that produced the engine:

- “CD” indicates the engine was built in Saran, France
- “PE” indicates the engine was built in Torreon, Mexico

Your engine’s serial number plate (A) is located on the right-hand side of cylinder block near the starter motor.

A—Serial Number Plate



Engine Serial Number Plate Location

RG11522 -UN-01DEC00

RG.RG34710,5002 -19-30JAN98-1/1

RECORD ENGINE SERIAL NUMBER

Record all of the numbers and letters found on your engine serial number plate in the spaces provided below.

This information is very important for repair parts or warranty information.

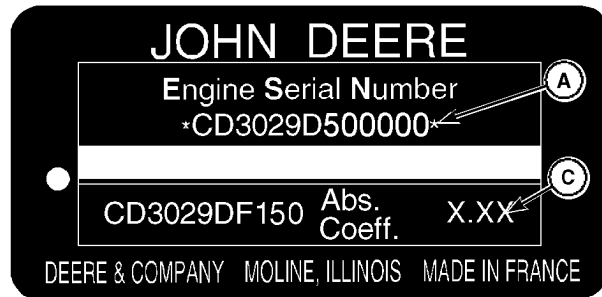
Engine Serial Number (A)

Engine Application Data (B)

Coefficient of Absorption Value (For Smoke Emissions) (C)
(Saran-Built Engines Only)

NOTE: Emission-certified engines have application data (B) ending in “150s” or “180s”, while emission non-certified engines have application data (B) ending in “120s” or “160s”.

- A—Serial Number
- B—Application Data
- C—Coefficient of Absorption Value



Saran Serial Number Plate

RG11523 -UN-01DEC00

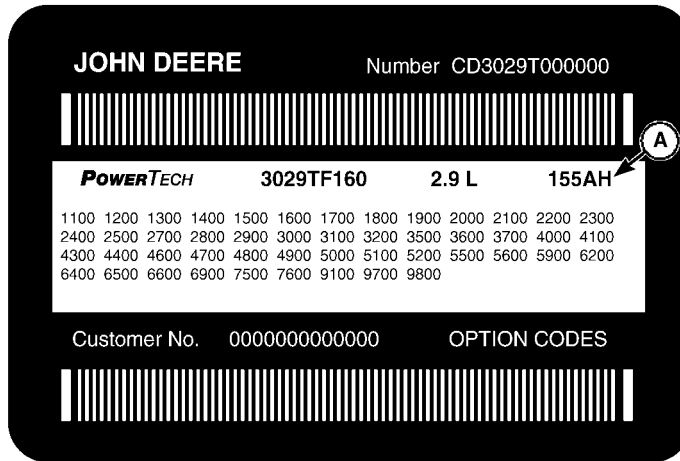


Torreon Serial Number Plate

RG11524 -UN-01DEC00

RG.RG34710,5003 -19-30JAN98-1/1

ENGINE OPTION CODES



Option Code Label

A—Base Code

OEM engines have an engine option code label affixed to the rocker arm cover. These codes indicate which of the engine options were installed on your engine at the factory. When in need of parts or service, furnish your authorized servicing dealer or engine distributor with these numbers.

The engine option code label includes an engine base code (A). This base code must also be recorded along with the option codes. At times it will be necessary to furnish this base code to differentiate two identical option codes for the same engine model.

The first two digits of each code identify a specific group, such as alternators. The last two digits of each code identify one specific option provided on your engine, such as a 12-volt, 55-amp alternator.

If an engine is ordered without a particular component, the last two digits of that functional group option code will be 99, 00, or XX. The following list shows only the first two digits of the code numbers. For future reference such as ordering repair parts, it is important to have these code numbers available. To ensure this availability, enter the third and fourth digits shown on your engine option code label in the spaces provided on the following page.

An additional option code label may also be delivered (in a plastic bag attached to the engine or inserted in the machine documentation). It is recommended to place this label either on this page of the operators manual or in the Engine Owner's Warranty booklet under Option Codes.

The machine manufacturer may have placed the label in a specific accessible area (inside the enclosure or close to a maintenance area).

Your engine option code label may not contain all option codes if an option has been added after the engine left the producing factory.

If option code label is lost or destroyed, consult your servicing dealer or engine distributor selling the engine for a replacement.

Record your engine Base Code (A) in the spaces provided on next page for easy reference.

Record Keeping

Engine Serial Number: _____ Engine Base Code: _____

Option Codes	Description	Option Codes	Description
11_____	Rocker Arm Cover	37_____	Fuel Transfer Pump
12_____	Oil Filter Inlet	40_____	Oil Dipstick
13_____	Crankshaft Pulley	41_____	Front Auxiliary Drive
14_____	Flywheel Housing	43_____	Starting Aid
15_____	Flywheel	44_____	Timing Gear Cover With Gears
16_____	Fuel Injection Pump	46_____	Cylinder Block and Liners
17_____	Air Inlet	47_____	Crankshaft and Bearings
18_____	Air Cleaner	48_____	Connecting Rods and Pistons
19_____	Oil Pan	49_____	Valve Actuating Mechanisms
20_____	Coolant Pump	50_____	Oil Pump
21_____	Thermostat Cover	51_____	Cylinder Head With Valves
22_____	Thermostat	52_____	Auxiliary Drive Adapters
23_____	Fan Drive	55_____	Shipping Stand
24_____	Fan Belt	56_____	Paint Option
25_____	Fan	59_____	Oil Cooler and Filter
26_____	Engine Coolant Heater	62_____	Alternator Mounting
27_____	Radiator	64_____	Exhaust Elbow
28_____	Exhaust Manifold	65_____	Turbocharger
29_____	Ventilator System	66_____	Temperature Sensor/Switch
30_____	Starter Motor	69_____	Engine Serial Number Plate
31_____	Alternator	75_____	Air Restriction Indicator
32_____	Instrument Panel	76_____	Oil Pressure Sensor/Switch
35_____	Fuel Filter	95_____	Special Equipment (Factory Installed)
36_____	Front Plate	97_____	Special Equipment (Field Installed Kits)
		98_____	Shipping

NOTE: These option codes are based on the latest information available at the time of publication.

The right is reserved to make changes at any time without notice.

RECORD FUEL INJECTION PUMP MODEL NUMBER

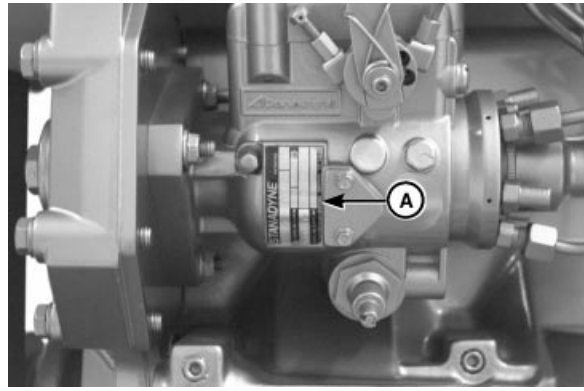
Record the fuel injection pump model and serial information found on the serial number plate (A).

Model No. _____ RPM _____

Manufacturer's No. _____

Serial No. _____

A—Serial Number Plate



RG11526 -UN-01DEC00

Injection Pump Serial Number Plate

RG.RG34710,5005 -19-30JAN98-1/1