

H42552

-UN-10NOV94



H42552

JOHN DEERE CTS COMBINE WITH 900 SERIES PLATFORM

JOHN DEERE CTS (RICE) COMBINE SERIAL NO. (645501-)

JOHN DEERE CTS (SMALL GRAIN) COMBINE SERIAL NO. (660401-)

(SPECIFICATIONS AND DESIGN SUBJECT TO CHANGE WITHOUT NOTICE)

NOTE

FOR 900 SERIES PLATFORM PARTS INFORMATION, REFER TO JOHN DEERE 900 SERIES PLATFORM PARTS CATALOG - PC-2104.

FOR 40 SERIES CORN HEAD PARTS INFORMATION, REFER TO JOHN DEERE 40 SERIES CORN HEAD PARTS CATALOG - PC-1223.

FOR 50A SERIES ROW-CROP HEAD PARTS INFORMATION, REFER TO JOHN DEERE 50A SERIES ROW-CROP HEAD PARTS CATALOG - PC-1747.

FOR THREE-ROLLER BELT PICKUP PARTS INFORMATION, REFER TO JOHN DEERE THREE-ROLLER BELT PICKUP PARTS CATALOG - PC-2210.

FOR 918 AND 920 DRAPER PARTS INFORMATION, REFER TO JOHN DEERE 918 AND 920 DRAPER PLATFORMS PARTS CATALOG - PC-2212.

FOR 90 SERIES CORN HEAD PARTS INFORMATION, REFER TO JOHN DEERE 90 SERIES CORN HEAD PARTS CATALOG - PC-2404.

IMPORTANT

THIS PARTS CATALOG CONTAINS PARTS INFORMATION FOR THE CTS COMBINE.
VINTAGE IS DETERMINED BY THE COMBINE SERIAL NUMBER OR THE PRODUCT IDENTIFICATION NUMBER (PIN).
IT IS IMPORTANT THAT THE CORRECT NUMBERS BE USED WHEN ORDERING PARTS.

PRODUCT INFORMATION NUMBER (PIN) PLATE

THE PRODUCT IDENTIFICATION PLATE (PIN) IS LOCATED NEAR THE RIGHT HAND SIDE OF THE TOOL BOX.
AN EXAMPLE OF THE TWO-LINES ON THIS PIN PLATE IS:

HO0CTSX640101
COMBINE

(FIRST LINE)

HO - MANUFACTURING UNIT (HARVESTER WORKS)

0CTS - MODEL IDENTIFIER

X - CONFIGURATION CODE/MODELIDENTIFIER SUFFIX

640101 - SEQUENTIAL NUMBER USED IN SERIAL NO. COLUMN

(SECOND LINE)

COMBINE - TYPE OF PRODUCT

COPYRIGHT (C) 2000. DEERE & COMPANY. MOLINE, ILLINOIS. ALL RIGHTS RESERVED.

PARTS LISTING INFORMATION

SERIAL NUMBER OR PRODUCT IDENTIFICATION NUMBER (PIN) INFORMATION SHOWS ON WHICH MACHINES PART MAY BE USED; FOR EXAMPLE:

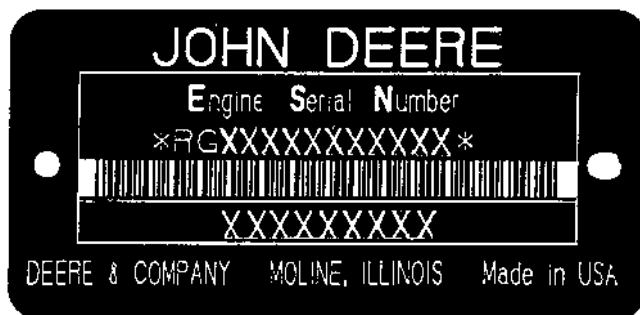
- THE PART CAN BE USED ON ALL MACHINES.
- 000000 THE PART CAN BE USED ON ALL MACHINES UP TO AND INCLUDING THE SERIAL NUMBER LISTED.
- 000000- THE PART CAN BE USED ON ALL MACHINES BEGINNING WITH THE SERIAL NUMBER LISTED.
- 000000-000000 THE PART CAN BE USED ON ALL MACHINES BETWEEN AND INCLUDING SERIAL NUMBERS LISTED.

WHEN XXXXXX'S ARE LISTED IN PLACE OF A SERIAL NUMBER, A SERIAL NUMBER CHANGE WAS MADE, BUT THE EXACT SERIAL NUMBER IS NOT AVAILABLE WHEN THE CATALOG WAS PRINTED.

SHORT BLOCK SERIAL NUMBER PLATE

(-RGSB076882500)

RGP3513 -UN-01JAN94



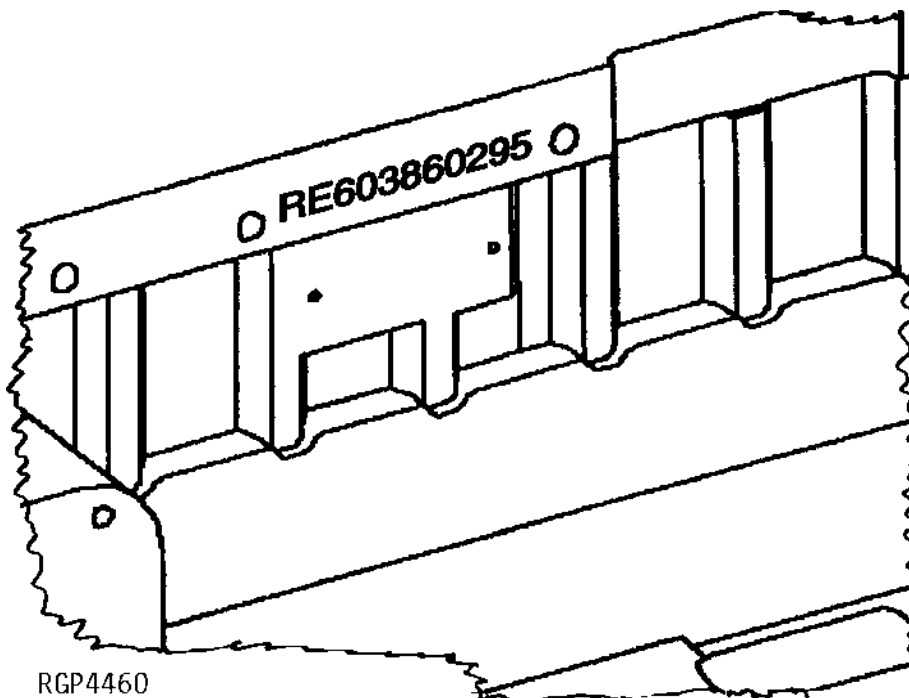
RGP3513

THE REPLACEMENT SHORT BLOCK ASSEMBLY HAS A SERIAL NUMBER PLATE ATTACHED. THE ORIGINAL ENGINE SERIAL NUMBER MUST BE STAMPED ONTO THE NEW PLATE IN THE BLANK SPACE PROVIDED, AS A REFERENCE FOR YOUR DEALER. THE PLATE CAN BE ATTACHED WITH (2) 37H44 DRIVE SCREWS.

- | | |
|---------------------------------------|----------------------------|
| 1. DESIGNATES ENGINE MANUFACTURER | RG - WATERLOO ENGINE WORKS |
| 2. DESIGNATES REPLACEMENT SHORT BLOCK | SB |
| 3. DESIGNATES LITERS | XXX- 076 (7.6) |
| 4. DESIGNATES THE PRODUCTION DATE | 8825 |
| 5. DESIGNATES COMPONENT SEQUENCE | 00 |

SHORT BLOCK SERIAL NUMBER IDENTIFICATION

(RE603860295-)
RGP4460 -UN-04MAR95



SERIAL NUMBER STAMPED INTO CASTING OF BLOCK NEAR PREVIOUS SERIAL NUMBER PLATE.

EXAMPLE: RE603860295

- | | |
|-----------------------------------|---------|
| 1. DESIGNATES SERVICE PART NUMBER | RE60386 |
| 2. DESIGNATES MONTH ASSEMBLED | 02 |
| 3. DESIGNATES YEAR ASSEMBLED | 95 |

TWO LINE BAR CODED ENGINE SERIAL NUMBER PLATE (LOCATED ON FUEL INJECTION PUMP SIDE OF ENGINE)

RGP3513 -UN-01JAN94



RGP3513

FIRST LINE

DEFINES

RG - WATERLOO ENGINE WORKS

DESIGNATES ENGINE MANUFACTURER.

6

DESIGNATES NUMBER OF CYLINDERS.

076 (7.6 LITERS)

DESIGNATES LITER DISPLACEMENT.

H - AIR-TO-AIR

XXXXXX

DESIGNATES ENGINE SERIAL NUMBER.

SECOND LINE

6076

CTS

ADDITIONAL ENGINE INFORMATION

ENGINE MODEL ENGINE SERIAL NO.

6076HH030 (260 HP) (-565536)

6076HH034 (260 HP) (565537-)

DIRECTION ARROW

ARROWS ARE USED WITH ILLUSTRATIONS TO INDICATE THE FRONT OF THE UNIT. "RIGHT-HAND" AND "LEFT-HAND" SIDES ARE DETERMINED BY FACING IN THE DIRECTION OF MACHINE FORWARD TRAVEL.

BOX-ENCLOSED ILLUSTRATIONS

A KEY NUMBER, SHOWN IN THE PARTS LIST, IS ASSIGNED TO A BOX ENCLOSING ALL PARTS SOLD AS A SERVICE ASSEMBLY. A BOX NOT KEYED INCLUDES NON-CURRENT PARTS.

KITS

KIT INFORMATION WILL BE FOUND IMMEDIATELY FOLLOWING THE STORY IN WHICH IT IS USED. THE ILLUSTRATION IS REPEATED WITH ONLY THE KIT PARTS CALLED OUT AND WITH ALL OTHER PARTS SHOWN IN PHANTOM.

JDM REMANUFACTURED COMPONENTS

THE SERVICE PARTS LISTED IN THIS CATALOG ARE INTENDED FOR THE REPAIR OF ORIGINAL EQUIPMENT COMPONENTS. ALTHOUGH MOST SERVICE PARTS MAY BE USED TO REPAIR REMANUFACTURED COMPONENTS, THE REMANUFACTURED DESIGN MAY CHANGE PARTS SUFFICIENTLY SO THAT SERVICE PARTS ARE INADEQUATE OR NOT USABLE.

BOLT AND CAP SCREW STRENGTH IDENTIFICATION

BOLTS AND CAP SCREWS REQUIRED TO HAVE HIGH-STRENGTH QUALITIES EQUIVALENT TO SAE GRADE 8 ARE IDENTIFIED THROUGHOUT THIS CATALOG BY THE DESCRIPTION HS SAE 8. ALL STANDARD BOLTS AND CAP SCREWS ARE SAE GRADE 5 OR LOWER. BOLTS AND CAP SCREWS REQUIRED TO HAVE HIGH-STRENGTH QUALITIES EQUIVALENT TO PROPERTY CLASS 10.9 ARE IDENTIFIED THROUGHOUT THIS CATALOG BY THE DESCRIPTION HS 10.9. ALL STANDARD BOLTS AND CAP SCREWS ARE PROPERTY CLASS 8.8 OR LOWER.

SI UNITS OF MEASURE

METRIC DIMENSIONS ARE GIVEN, WHERE APPLICABLE, THROUGHOUT THIS PARTS CATALOG.

TRADEMARKS

THROUGHOUT THIS PARTS CATALOG, YOU WILL FIND THE FOLLOWING DEERE & COMPANY TRADEMARKS:

DIAL-A-SPEED™
DIAL-A-MATIC™
HARVESTRAK™
CONTOUR MASTER™

POSI-TORQ™
TORQ-GARD SUPREME®
QUIK-TATCH™

CHANGE INDICATOR LINE

CHANGES AFFECTING THE ORDERING OF PARTS ARE IDENTIFIED BY VERTICAL LINES MARKED IN THE LEFT-HAND MARGIN OF REVISED PARTS LISTING IMAGES. A LINE IS ALSO AT THE LEFT-HAND EDGE OF THE SAME PART NUMBER IN THE NUMERICAL INDEX TO SHOW THE LOCATION OF REVISED INFORMATION.

FUNCTION CODE

(EXAMPLE - FC: 5000)

FUNCTION CODES ARE LOCATED ON EACH PAGE IN THE UPPER RIGHT-HAND CORNER IN THE BOX. THE CODE LISTED IS A GROUPING CODE THAT CAN BE USED FOR WARRANTIES AND FOR DTAC TO IDENTIFY CERTAIN AREAS.

COMPLETE GOODS LISTINGS

COMPLETE GOODS ARE IN BOLD FACE TYPE. ORDER SEPARATELY. DO NOT INCLUDE ON REPLACEMENT PARTS ORDER.

FOR INDIVIDUAL HEADER PARTS CATALOGS REFER TO:

PC-2104 - PARTS CATALOG FOR JOHN DEERE 900 SERIES PLATFORMS

PC-2210 - PARTS CATALOG FOR JOHN DEERE THREE ROLLER BELT PICK-UP

PC-2212 - PARTS CATALOG FOR JOHN DEERE 918 DRAPER PLATFORMS

PC-1747 - PARTS CATALOG FOR JOHN DEERE 50A SERIES ROW-CROP HEADS

PC-1223 - PARTS CATALOG FOR JOHN DEERE 40 SERIES CORN HEADS

PC2404 - PARTS CATALOG FOR JOHN DEERE 90 SERIES CORN HEADS

SECTION INDEX

SECTION 10 - GENERAL INFORMATION

SECTION 20 - ENGINE FAN, INTERCOOLER AND SCREENS

SECTION 26 - 6076 ENGINE (HH030)

SECTION 30 - FUEL AND AIR

SECTION 40 - ELECTRICAL

SECTION 50 - POWER TRAIN

SECTION 60 - STEERING AND BRAKES

SECTION 70 - HYDRAULICS

SECTION 80 - SEPARATOR SHELL

SECTION 90 - OPERATOR'S STATION

SECTION 110 - FEEDER HOUSE

SECTION 120 - THRESHING AND SEPARATION

SECTION 121 - DRIVES

SECTION 125 - RESIDUE DISPOSAL

SECTION 130 - CLEAN GRAIN ELEVATOR, GRAIN TANK AND UNLOADING AUGER

SECTION 160 - DIAL-A-MATIC HEADER HEIGHT CONTROL

SECTION 170 - DECALS, BELTS AND CHAINS

SECTION 180 - NUMERICAL INDEX

ALPHABETICAL INDEX

GRID	A	PAGE	GRID	PAGE	
4E21	A/C COMPRESSOR (650401-) R134A	90 - 90	4D14	AIR SEAT SUSPENSION KITS (665401-)	90 - 56
4E22	A/C COMPRESSOR COVER (650401-) R134A	90 - 91	4D16	AIR SEAT SUSPENSION KITS (665401-)	90 - 58
4E21	A/C COMPRESSOR DIODE (650401-) R134A	90 - 90	4D18	AIR SEAT SUSPENSION KITS (665401-)	90 - 60
4E21	A/C COMPRESSOR MANIFOLD (650401-) R134A	90 - 90	2C5	AIR SEAT WIRING HARNESS (660401-)	40 - 20
4E22	A/C COMPRESSOR PULLEY (650401-) R134A	90 - 91	4D12	AIR SUSPENSION KITS, SEAT (665401-)	90 - 54
4E21	A/C COMPRESSOR SEAL (650401-) R134A	90 - 90	4D14	AIR SUSPENSION KITS, SEAT (665401-)	90 - 56
4E24	A/C COMPRESSOR SEAL KIT (650401-) R134A	90 - 93	4D16	AIR SUSPENSION KITS, SEAT (665401-)	90 - 58
1B22	A/C CONDENSER	20 - 16	4D18	AIR SUSPENSION KITS, SEAT (665401-)	90 - 60
3H1	A/C CONDENSER AND OIL COOLER	70 - 96	4D10	AIR SUSPENSION, SEAT (660401-)	90 - 52
3I9	ACCESS DOOR, REAR HOOD AND STOP	80 - 26	1E23	ALTERNATOR ADJUSTING STRAP	26 - 76
3H23	ACCESS PLATFORM AND STEP, ENGINE	80 - 16	2E1	ALTERNATOR AND VOLTAGE REGULATOR (95 AMP) , BOSCH	40 - 64
3J1	ACCESS SHIELD, SERVICE, L.H.	80 - 42	2E3	ALTERNATOR MOUNTING	40 - 66
3I23	ACCESS SHIELD, SERVICE, R.H.	80 - 40	1E23	ALTERNATOR SUPPORT STRAP	26 - 76
3E21	ACCUMULATOR AND MOUNTING, ONE GALLON (655401-)	70 - 40	2D24	ALTERNATOR, SHEAVE AND BELT - BOSCH	40 - 63
3E17	ACCUMULATOR AND MOUNTING, ONE HALF GALLON, SINGLE	70 - 36	2C17	ANTENNA, SPEAKERS AND RADIO	40 - 32
3D7	ACCUMULATOR PRESSURE GAUGE AND WIRING HARNESS	70 - 2	5G15	ARM, LOCKOUT, DUAL-RANGE	121 - 38
3E19	ACCUMULATOR, ONE-HALF GALLON DUAL AND MOUNTING (-655400)	70 - 38	3I3	ARM, REAR LADDER LANDING LATCH	80 - 20
4D6	ADJUST FORE-AND-AFT, SEAT	90 - 48	2I6	ARM, STEERING	50 - 52
3C16	ADJUSTABLE REAR AXLE	60 - 33	1E19	ARMATURE (DENSO) (12V F4)	26 - 72
3C19	ADJUSTABLE REAR AXLE STEERING TIE RODS	60 - 36	3F18	ARMATURE, SOLENOID CONTROL VALVE KIT FOR AUGER SWING	70 - 62
4D8	ADJUSTER, CAB SEAT HEIGHT	90 - 50	4D24	ARMREST (L.H.)	90 - 66
5G23	ADJUSTING BRACKET, CYLINDER DRIVE, DUAL-RANGE	121 - 46	4D22	ARMREST ADJUSTING MECHANISM, (R.H.)	90 - 64
1F12	AIR CLEANER AND INTAKE TUBES	30 - 12	2B24	ARMREST CONTROL PANEL	40 - 14
2C9	AIR CONDITIONER AND HEATER SWITCH	40 - 24	2B22	ARMREST WIRING HARNESS	40 - 12
2C7	AIR CONDITIONER PRESSURIZER FAN KIT (640401-650400)	40 - 22	4D20	ARMREST WITH GLOVE BOX (R.H.)	90 - 62
2C5	AIR CONDITIONER WIRING HARNESS (660401-)	40 - 20	5D13	ARMS, FRAME, PRECLEANER CHAFFER	120 - 56
2C3	AIR CONDITIONER, HEATER WIRING HARNESS (-660400)	40 - 18	1D3	ARMS, ROCKER	26 - 26
4C16	AIR CONDITIONING AND HEATER DUCTS	90 - 33	1C9	ASSEMBLY, COMPLETE BLOCK (ESN 500000-)	26 - 6
4E6	AIR CONDITIONING AND HEATER HOUSING FILTERS	90 - 74	2H11	ASSEMBLY, HYDROSTATIC DRIVE PISTON	50 - 32
4E16	AIR CONDITIONING COMPRESSOR (-650400) R-12	90 - 84	3G1	ASSEMBLY, SIX STACK SOLENOID CONTROL VALVE (660401-)	70 - 72
4E10	AIR CONDITIONING SYSTEM	90 - 78	3B23	ATTENUATOR,UPPER, HYDRAULIC STEERING HOSES	60 - 16
4E12	AIR CONDITIONING SYSTEM, COMPRESSOR (-650400) R-12	90 - 80	6H18	AUGER BELTS	170 - 2
4E14	AIR CONDITIONING SYSTEM, COMPRESSOR (650401-) R134A	90 - 82	6E2	AUGER CHAIN TIGHTENER, LOWER TAILINGS	125 - 70
4E8	AIR CONDITIONING/HEATER AND PRESSURIZER FAN	90 - 76	5C19	AUGER CLEANOUT DOOR, SHOE GRAIN SUPPLY, HANDLES AND LATCHES	120 - 36
3H21	AIR DEFLECTOR, AIR DUCT, ENGINE COMPARTM ENT	80 - 14	6E8	AUGER DRIVE SHIELD, UPPER TAILINGS	125 - 76
3H21	AIR DUCT AND AIR DEFLECTOR, ENGINE COMPA RTMENT	80 - 14	6E10	AUGER DRIVE SHIELD, UPPER TAILINGS	125 - 78
4C15	AIR FILTER AND HOUSING, CAB	90 - 32	3I17	AUGER DRIVE SHIELDS (R-H SIDE)	80 - 34
1B22	AIR INTERCOOLER	20 - 16	6E4	AUGER DRIVE TIGHTENER, LOWER TAILINGS	125 - 72
4D10	AIR SEAT SUSPENSION (660401-)	90 - 52	6E8	AUGER DRIVE, UPPER TAILINGS	125 - 76
4D12	AIR SEAT SUSPENSION KITS (665401-)	90 - 54	6E10	AUGER DRIVE, UPPER TAILINGS	125 - 78
			6F9	AUGER HOUSING, LOADING, UPPER CLEAN GRAIN	130 - 12
			6F11	AUGER HOUSING, LOADING, UPPER CLEAN GRAIN (660401-)	130 - 14
			2D21	AUGER LIGHT, UNLOADING, GRAIN TANK	40 - 60
			6G5	AUGER LOWER GEAR CASE, VERTICAL	130 - 34
			2D7	AUGER SENSOR AND WIRING HARNESS, UNLOADING (660401-)	40 - 46
			3F17	AUGER SWING SOLENOID CONTROL VALVE	70 - 61
			3F18	AUGER SWING, ARMATURE, SOLENOID CONTROL VALVE KIT	70 - 62

ALPHABETICAL INDEX - CONTINUED

GRID	PAGE	GRID	PAGE
3F16	70 - 60	1C20	26 - 17
3G11	70 - 82	2H21	50 - 42
3G13	70 - 84	2G18	50 - 14
6G11	130 - 40	2G20	50 - 16
6G9	130 - 38	6H21	170 - 5
6F9	130 - 12	5C17	120 - 34
6D21	125 - 64	5C11	120 - 28
2D7	40 - 46	5C13	120 - 30
6E23	130 - 2	5C15	120 - 32
6H3	130 - 56	5C9	120 - 26
6G22	130 - 50	5C7	120 - 24
6G15	130 - 44	5C5	120 - 22
6G13	130 - 42	6H6	130 - 60
6F13	130 - 16	5H17	121 - 64
6F15	130 - 18	4H11	110 - 54
6H19	170 - 3	4D3	90 - 44
6D19	125 - 62	4D4	90 - 45
6H4	130 - 58	4D5	90 - 46
6H6	130 - 60	6H19	170 - 3
6H9	130 - 64	6H18	170 - 2
6E8	125 - 76	6H21	170 - 5
6E10	125 - 78	6H19	170 - 3
6E6	125 - 74	6H18	170 - 2
6G7	130 - 36	6H21	170 - 5
6H1	130 - 54	6H19	170 - 3
5C22	120 - 40	6H20	170 - 4
5C20	120 - 38	6H21	170 - 5
2B14	40 - 4	6H19	170 - 3
2B20	40 - 10	6H20	170 - 4
2G9	50 - 5	6H20	170 - 4
2H2	50 - 23	6H21	170 - 5
3C17	60 - 34	6H21	170 - 5
2G8	50 - 4	6H18	170 - 2
3C16	60 - 33	1C9	26 - 6
3C23	60 - 40	1C13	26 - 10
3C15	60 - 32	1C11	26 - 8
B		1D1	26 - 24
4D1	90 - 42	2E1	40 - 64
2F10	40 - 98	2D24	40 - 63
6H9	130 - 64	4C7	90 - 24
2D19	40 - 58	6G11	130 - 40
2E19	40 - 82	3B20	60 - 13
5E16	120 - 84	2F2	40 - 90
2H1	50 - 22	5C3	120 - 20
6G24	130 - 52	2C10	40 - 25
2I1	50 - 47	3F25	70 - 70
1C20	26 - 17	3B20	60 - 13
1D12	26 - 38	3B13	60 - 6
6D25	125 - 68	3B15	60 - 8
2H2	50 - 23	3B9	60 - 2
2H3	50 - 24		

ALPHABETICAL INDEX - CONTINUED

GRID		PAGE	GRID		PAGE
3B11	BRAKE PEDALS	60 - 4	2E17	CENTRAL ELECTRONICS MODULE AND CIRCUIT BOARDS	40 - 80
3B17	BRAKE SHOES AND DRUM.....	60 - 10	6C20	CHAFF SPREADER (BELT TYPE) FRAME, SHIELDS AND HANDLES (-650400).....	125 - 38
3B19	BRAKE SLAVE CYLINDER	60 - 12	6C24	CHAFF SPREADER (BELT TYPE) PAN AND SEALS (-650400)	125 - 42
2E9	BREAKERS, CIRCUIT, ENGINE COMPARTMENT	40 - 72	6D15	CHAFF SPREADER (DUAL MOTOR) HOSES AND LINES (650401-)	125 - 58
2E6	BREAKERS, CIRCUIT, ENGINE COMPARTMENT (-660400)	40 - 69	6D1	CHAFF SPREADER (DUAL MOTOR) PAN, WINGS AND SEALS (650401-)	125 - 44
2E7	BREAKERS, CIRCUIT, ENGINE COMPARTMENT (660401-)	40 - 70	6C22	CHAFF SPREADER (DUAL MOTOR) SHIELDS AND HANDLES (650401-)	125 - 40
1C24	BUSHING, CAMSHAFT	26 - 21	6D5	CHAFF SPREADER CONTROL, CHECK VALVE, ROD AND KNOB.....	125 - 48
1C7	BUSHING, CAMSHAFT (6076)	26 - 4	6C16	CHAFF SPREADER DISC (BELT TYPE) (-650400)	125 - 34
1D9	BYPASS VALVE, OIL FILTER.....	26 - 34	6C18	CHAFF SPREADER DISC (DUAL MOTOR) (650401-)	125 - 36
C					
4C15	CAB AIR FILTER AND HOUSING	90 - 32	6D13	CHAFF SPREADER HOSES, LINES AND MOTOR (-650400)	125 - 56
2B11	CAB DOME LIGHT	40 - 1	6D9	CHAFF SPREADER LINES AND FITTINGS	125 - 52
4B20	CAB DOOR AND GLASS	90 - 12	6D11	CHAFF SPREADER LINES, HOSES, VALVE AND PUMP	125 - 54
4B18	CAB DOOR LATCH.....	90 - 10	3D14	CHAFF SPREADER MOTOR (EATON) (655929-)	70 - 9
4B22	CAB FRAME AND SUPPORT.....	90 - 14	6D3	CHAFF SPREADER MOUNTING SUPPORT	125 - 46
4F3	CAB HARDWARE KIT	90 - 96	6D17	CHAFF SPREADER PUMP	125 - 60
4B16	CAB INTERIOR TRIM PANELS	90 - 8	5H3	CHAFFER DRIVE, CONVEYOR AUGERS AND SIEVE	121 - 50
4C11	CAB L.H. LANDING AND MIRROR (650401-)	90 - 28	5D15	CHAFFER ELEMENT.....	120 - 58
4C9	CAB LANDING AND MIRROR (L.H.) (-650400)	90 - 26	5D17	CHAFFER ELEMENT.....	120 - 60
4C13	CAB LANDING AND MIRROR (R.H.)	90 - 30	5D19	CHAFFER EXTENSION ELEMENT	120 - 62
4B10	CAB PANELS AND FLOOR MAT	90 - 2	5D21	CHAFFER FRAME	120 - 64
2B16	CAB POST INSTRUMENT PANEL	40 - 6	5D13	CHAFFER FRAME ARMS, PRECLEANER	120 - 56
4C17	CAB POST INSTRUMENT PANEL	90 - 34	5D9	CHAFFER FRAME, PRECLEANER	120 - 52
4F5	CAB POST INSTRUMENT PANEL LH (EXPORT ONLY)	90 - 98	5D5	CHAFFER, PRECLEANING (-655400)	120 - 48
4B14	CAB REAR AND SIDE SEALS	90 - 6	5D7	CHAFFER, PRECLEANING (655401-)	120 - 50
4B24	CAB ROOF AND SUPPORTS.....	90 - 16	6E2	CHAIN TIGHTENER, LOWER TAILINGS AUGER	125 - 70
2B18	CAB ROOF LIGHTS	40 - 8	4G16	CHAIN, IDLER SHAFT AND DRUM, FEEDER CONVEYOR.....	110 - 34
4D8	CAB SEAT HEIGHT ADJUSTER	90 - 50	6D25	CHAIN, SPROCKETS AND BEARINGS, TAILINGS ELEVATOR CONVEYOR	125 - 68
4B12	CAB SOUND DEADENING, FOAM AND SEALS.....	90 - 4	6H3	CHANNEL AND COVERS, CROSS AUGER	130 - 56
2B12	CAB WIRING HARNESS.....	40 - 2	6G7	CHARGE HOUSING, VERTICAL UNLOADING AUGER.....	130 - 36
2G12	CABLE AND SWITCH, HYDROSTATIC DRIVE LEVE R.....	50 - 8	3F3	CHARGE PRESSURE HOSE	70 - 46
5C3	CABLE, CONCAVE INDICATOR, AND BRACKETS	120 - 20	5H17	CHARGE PUMP MOUNTING AND SHEAVE, REEL/ BELT PICKUP	121 - 64
2G14	CABLE, HYDROSTATIC DRIVE CONTROL.....	50 - 10	2H12	CHARGE PUMP, HYDROSTATIC DRIVE	50 - 33
2D19	CABLES, BATTERY.....	40 - 58	6D5	CHECK VALVE, ROD, KNOB AND CONTROL, CHAFF SPREADER	125 - 48
2H20	CAM LOBE MOTOR	50 - 41	6G5	CHUTE, GRAIN TANK CLEAN OUT CHUTE.....	130 - 34
2I2	CAM, CARRIER AND PISTONS	50 - 48	2B16	CIRCUIT BOARD, COMBINE DATA CENTER.....	40 - 6
2G24	CAM, SHIFTER, TRANSMISSION AND DIFFERENTIAL	50 - 20	4C17	CIRCUIT BOARD, COMBINE DATA CENTER.....	90 - 34
1C24	CAMSHAFT	26 - 21	2E17	CIRCUIT BOARDS, CENTRAL ELECTRONICS MODU LE	40 - 80
1C24	CAMSHAFT BUSHING	26 - 21	2E9	CIRCUIT BREAKER RELAYS	40 - 72
1C7	CAMSHAFT BUSHING (6076).....	26 - 4	2E6	CIRCUIT BREAKER RELAYS (-660400)	40 - 69
1C24	CAMSHAFT FOLLOWER.....	26 - 21	2E7	CIRCUIT BREAKER RELAYS (660401-)	40 - 70
1D3	CAMSHAFT FOLLOWER.....	26 - 26	2E9	CIRCUIT BREAKERS, ENGINE COMPARTMENT.....	40 - 72
1C24	CAMSHAFT GEAR.....	26 - 21	2E6	CIRCUIT BREAKERS, ENGINE COMPARTMENT (-660400)	40 - 69
2H1	CAP, BEARING, FINAL DRIVE.....	50 - 22	2E7	CIRCUIT BREAKERS, ENGINE COMPARTMENT (660401-)	40 - 70
6G5	CAP, GRAIN TANK CLEAN OUT CHUTE	130 - 34			
1C7	CAPS, MAIN BEARING	26 - 4			
2I4	CAPS, YOKE AND PIVOTS	50 - 50			
2I2	CARRIER, PISTONS AND CAM	50 - 48			
2J17	CASE DRAIN HYDRAULIC LINES, FOUR WHEEL DRIVE	50 - 88			
2B16	CDC (COMBINE DATA CENTER)	40 - 6			
4C17	CDC (COMBINE DATA CENTER)	90 - 34			
1D22	CENTER HOUSING, TURBOCHARGER (AIRESEARCH)	26 - 50			
1D23	CENTER HOUSING, TURBOCHARGER (SCHWITZER)	26 - 51			
2C23	CENTER, L.H. MAIN WIRING HARNESS	40 - 38			

ALPHABETICAL INDEX - CONTINUED

GRID		PAGE	GRID		PAGE
6F18	CLEAN GRAIN ELEVATOR DRIVE TIGHTENER AND IDLER.....	130 - 22	5B20	CONCAVE, RASP BAR AND GRATE	120 - 12
6F16	CLEAN GRAIN ELEVATOR GEARCASE AND SHEAVE.....	130 - 20	5C1	CONCAVE, SPIKE TOOTH	120 - 18
6F13	CLEAN GRAIN LOADING AUGER.....	130 - 16	5B24	CONCAVE, SPIKE-TOOTH	120 - 16
6F15	CLEAN GRAIN LOADING AUGER, FOLD (660401-)	130 - 18	1B22	CONDENSER, A/C.....	20 - 16
6E23	CLEAN GRAIN LOWER AUGER AND HINGED DOOR	130 - 2	3H1	CONDENSER, A/C.....	70 - 96
6F1	CLEAN GRAIN LOWER ELEVATOR AND CONVEYOR CHAIN	130 - 4	1C18	CONNECTING RODS (6076)	26 - 15
6F3	CLEAN GRAIN LOWER ELEVATOR AND CONVEYOR CHAIN	130 - 6	2F22	CONNECTORS AND TERMINALS, SUPPLEMENTARY	40 - 110
6G5	CLEAN OUT CHUTE, GRAIN TANK	130 - 34	1E13	CONNECTORS, ELECTRICAL, WEATHERPACK (6076).....	26 - 66
5D3	CLEANING FAN INTAKE SHIELDS	120 - 46	1E7	CONNECTORS, FUEL INJECTION PUMP HOUSING (6076HH030, HH034)	26 - 60
5C24	CLEANING FANS AND SHROUDS	120 - 42	2E11	CONNECTORS, LOWER HARNESS, 6076 ENGINE ENGINE	40 - 74
5D1	CLEANING FANS AND SHROUDS	120 - 44	2E13	CONNECTORS, UPPER HARNESS, 6076 ENGINE	40 - 76
5H5	CLEANING SHOE AND CONVEYOR AUGER PIVOT ARM DRIVE TIGHTENER.....	121 - 52	2F14	CONNECTORS, WEATHERPACK	40 - 102
4G7	CLOSURE PLATES, FEEDER HOUSE - CONTOUR MASTER (660401-).....	110 - 24	2B14	CONSOLE PANEL, OVERHEAD.....	40 - 4
4E16	CLUTCH, COMPRESSOR (-650400) R-12	90 - 84	4G7	CONTOUR MASTER - FEEDER HOUSE FRAME, TILT BEAM & CLOSURE PLATES (660401-).....	110 - 24
4E17	CLUTCH, COMPRESSOR (-650400) R-12	90 - 85	4H7	CONTOUR MASTER DRIVESHAFT (660401-).....	110 - 50
5G7	CLUTCH, HEADER ELECTROMAGNETIC.....	121 - 30	3E11	CONTOUR MASTER HYDRAULIC HOSES, L.H SIDE (OPTIONAL) (660401-)	70 - 30
4G22	CLUTCH, SLIP, FEEDER HOUSE	110 - 40	4G11	CONTOUR MASTER LOCKOUT ADAPTER KIT (BELT PU & 4R CORN HEADS) (660401-)	110 - 28
4E16	COIL, COMPRESSOR (-650400) R-12	90 - 84	3F11	CONTOUR MASTER SOLENOID CONTROL RELIEF VALVE	70 - 54
1E19	COIL, FIELD WINDING (12V F4)	26 - 72	3F21	CONTOUR MASTER SOLENOID CONTROL VALVE (660401-).....	70 - 66
1F8	COLD WEATHER STARTING AID (-655614).....	30 - 8	3G17	CONTOUR MASTER TILT CYLINDER (660401-).....	70 - 88
1F10	COLD WEATHER STARTING AID (655615-).....	30 - 10	3G19	CONTOUR MASTER TILT CYLINDER HOSES AND FITTINGS (660401-)	70 - 90
3C3	COLUMN, STEERING (LOWER).....	60 - 20	4G5	CONTOUR MASTER, FEEDER HOUSE SHELL, WEAR PLATES AND SEALS (660401-)	110 - 22
3C1	COLUMN, STEERING (UPPER)	60 - 18	4G9	CONTOUR MASTER, LOCKOUT ASSEMBLY (OPTIONAL) (660401-)	110 - 26
4E2	COLUMN, STEERING (UPPER)	90 - 70	2G14	CONTROL CABLE, HYDROSTATIC DRIVE.....	50 - 10
2B16	COMBINE DATA CENTER	40 - 6	2B24	CONTROL PANEL, ARMREST	40 - 14
4C17	COMBINE DATA CENTER	90 - 34	3F11	CONTROL RELIEF VALVE MODULE, SOLENOID	70 - 54
3H17	COMPARTMENT, ENGINE	80 - 10	1E5	CONTROL UNIT, ELECTRONIC (ROBERT BOSCH) (6076HH030, HH034) (LATE DESIGN)	26 - 58
3H19	COMPARTMENT, ENGINE	80 - 12	2I8	CONTROL VALVE (-655400).....	50 - 54
3H21	COMPARTMENT, ENGINE, AIR DUCT AND AIR DEFLECTOR.....	80 - 14	2I9	CONTROL VALVE (655401-).....	50 - 55
1C9	COMPLETE BLOCK ASSEMBLY (ESN 500000-).....	26 - 6	3F18	CONTROL VALVE KIT, ARMATURE, SOLENOID, AUGER SWING	70 - 62
4E17	COMPRESSOR CLUTCH (-650400) R-12	90 - 85	3G1	CONTROL VALVE MODULE, SIX STACK SOLENOID ASSEMBLY & MOUNTINGS (660401-)	70 - 72
4E16	COMPRESSOR COIL (-650400) R-12	90 - 84	2I10	CONTROL VALVE SOLENOID	50 - 56
4E18	COMPRESSOR HARDWARE KIT (-650400) R-12	90 - 86	6D7	CONTROL VALVE, FLOW, REEL DRIVE	125 - 50
4E23	COMPRESSOR HARDWARE KIT (650401-) R134A.....	90 - 92	2H15	CONTROL VALVE, HYDROSTATIC DRIVE, DISPLACEMENT	50 - 36
4E19	COMPRESSOR PARTS (-650400) R-12	90 - 88	3F21	CONTROL VALVE, SOLENOID - CONTOUR MASTER (660401-).....	70 - 66
4E17	COMPRESSOR SERVICE VALVES (-650400) R-12	90 - 85	3F25	CONTROL VALVE, SOLENOID, BRACKETS.....	70 - 70
4E12	COMPRESSOR, AIR CONDITION SYSTEM (-650400) R-12	90 - 80	3H5	CONTROL VALVE, SOLENOID, ENGINE GEARCASE PRESSURE REGULATOR	70 - 100
4E16	COMPRESSOR, AIR CONDITIONING (-650400) R-12	90 - 84	3F19	CONTROL VALVE, SOLENOID, REEL FORE/AFT (650401-).....	70 - 64
6H19	COMPRESSOR, AIR CONDITIONING BELTS.....	170 - 3	6D5	CONTROL, CHECK VALVE, ROD AND KNOB, CHAFF SPREADER	125 - 48
4E14	COMPRESSOR, AIR CONDITIONING SYSTEM (650401-) R134A.....	90 - 82	2F6	CONVENIENCE OUTLET (660401-).....	40 - 94
4E16	COMPRESSOR, CLUTCH PULLEY (-650400) R-12	90 - 84	3D16	CONVERSION PARTS, HUDRAULIC, 200 SERIES CUTTING PLATFORM.....	70 - 11
2D18	CONCAVE ADJUSTING MOTOR	40 - 57	5H5	CONVEYOR AUGER AND CLEANING SHOE PIVOT ARM DRIVE TIGHTENER.....	121 - 52
5C3	CONCAVE INDICATOR, CABLE AND BRACKETS.....	120 - 20	6H18	CONVEYOR AUGER BELTS,	170 - 2

ALPHABETICAL INDEX - CONTINUED

GRID		PAGE	GRID		PAGE
5H3	CONVEYOR AUGERS, SIEVE AND CHAFFER DRIVE	121 - 50	5G23	CYLINDER DRIVE ADJUSTING BRACKET, DUAL-RANGE	121 - 46
6F1	CONVEYOR CHAIN AND ELEVATOR, CLEAN GRAIN LOWER	130 - 4	5G13	CYLINDER DRIVE GEARCASE, DUAL-RANGE	121 - 36
6F3	CONVEYOR CHAIN AND ELEVATOR, CLEAN GRAIN LOWER	130 - 6	5G19	CYLINDER DRIVE INTERMEDIATE SHAFT MOUNTING, DUAL-RANGE	121 - 42
4G16	CONVEYOR IDLER SHAFT, DRUM AND CHAIN, FEEDER.....	110 - 34	5G21	CYLINDER DRIVE INTERMEDIATE SHEAVE, DUAL-RANGE	121 - 44
1D17	COOLANT HEATER, ENGINE (6076).....	26 - 44	5G17	CYLINDER DRIVE TIGHTENER, DUAL-RANGE	121 - 40
1F18	COOLANT RECOVERY TANK	30 - 18	5G12	CYLINDER DRIVE, SINGLE RANGE	121 - 35
1D9	COOLER AND OIL FILTER HOUSING.....	26 - 34	5G11	CYLINDER DRIVE, SLOW SPEED.....	121 - 34
1D9	COOLER, ENGINE OIL	26 - 34	1D1	CYLINDER HEAD (6076).....	26 - 24
1F11	COOLER, FUEL	30 - 11	1D1	CYLINDER HEAD BOLTS (6076)	26 - 24
3H1	COOLER, OIL,	70 - 96	1D1	CYLINDER HEAD GASKET (6076).....	26 - 24
6H19	COOLING FAN BELTS	170 - 3	1E15	CYLINDER HEAD GASKET KIT (6076)	26 - 68
3J7	CORNER SHEET AND DOOR, FRONT, L.H.	80 - 48	1C18	CYLINDER LINERS (6076)	26 - 15
3J3	CORNER SHEET, R.H., FRONT.....	80 - 44	3F14	CYLINDER SPEED AND REEL LIFT, SOLENOID CONTROL VALVE.....	70 - 58
3J5	CORNER SHEET, REAR, L H	80 - 46	3F9	CYLINDER SPEED HYDRAULIC LINES AND HOSES ..	70 - 52
5H1	COUNTERSHAFT DRIVE, SECONDARY.....	121 - 48	3B19	CYLINDER, BRAKE SLAVE	60 - 12
6H4	COUNTERSHAFT DRIVE, UNLOADING AUGER	130 - 58	3B15	CYLINDER, BRAKE, MASTER	60 - 8
5G3	COUNTERSHAFT GEARCASE, PRIMARY	121 - 26	3G9	CYLINDER, DRIVE, GRAIN TANK UNLOADING.....	70 - 80
5G5	COUNTERSHAFT, PRIMARY, GEARCASE	121 - 28	3D24	CYLINDER, HEADER LIFT, HYDRAULIC	70 - 19
1B19	COUPLING WITH HUB, ENGINE GEARCASE	20 - 13	3G7	CYLINDER, HYDRAULIC, UNLOADING AUGER SWING, LINES AND HOSES	70 - 78
5F3	COUPLING, GEARBOX AND SHAFT, MODULE.....	121 - 2	3C13	CYLINDER, STEERING (4-WHEEL DRIVE).....	60 - 30
1E18	COVER STARTER SOLENOID (DENSO)	26 - 71	5B18	CYLINDER, THRESHING, RASP BAR	120 - 10
5C17	COVER, BEATER	120 - 34	5B22	CYLINDER, THRESHING, SPIKE TOOTH.....	120 - 14
4E22	COVER, COMPRESSOR A/C (650401-) R134A	90 - 91	3G17	CYLINDER, TILT - CONTOUR MASTER (660401-)	70 - 88
3H17	COVER, ENGINE.....	80 - 10	3G19	CYLINDER, TILT, HOSES AND FITTINGS - CONTOUR MASTER (660401-)	70 - 90
2H5	COVER, FRONT, HYDROSTATIC DRIVE PUMP	50 - 26	3G15	CYLINDER, UNLOADING AUGER SWING HYDRAULIC (655552-)	70 - 86
2G24	COVER, HOUSING, TRANSMISSION AND DIFFERENTIAL	50 - 20	3B11	CYLINDERS, MASTER	60 - 4
2H8	COVER, HYDROSTATIC DRIVE PUMP.....	50 - 29			
1C23	COVER, INJECTION PUMP ACCESS (6076)	26 - 20		D	
2H23	COVER, INNER	50 - 44	1C19	DAMPER KEY (6076)	26 - 16
2I1	COVER, QUILL AND BEARING	50 - 47	1E17	DAMPER, CRANKSHAFT, NO PULLEY GROOVES.....	26 - 70
1D4	COVER, ROCKER ARM	26 - 27	2B16	DATA CENTER, COMBINE.....	40 - 6
5B9	COVER, THRESHING CYLINDER	120 - 1	4C17	DATA CENTER, COMBINE.....	90 - 34
1C23	COVER, TIMING GEAR (6076).....	26 - 20	6J14	DECALS, FRONT.....	170 - 48
6H3	COVERS AND CHANNEL, CROSS AUGER	130 - 56	6J13	DECALS, FRONT WHEEL.....	170 - 46
5E14	COVERS AND FRAME, MODULE	120 - 82	6J14	DECALS, REAR	170 - 48
5E12	CRANK OUT SYSTEM, MODULE	120 - 80	6J13	DECALS, REAR WHEEL.....	170 - 46
1B20	CRANKCASE OIL DRAIN, ENGINE	20 - 14	6H22	DECALS, SAFETY AND LOCATIONS	170 - 6
1C19	CRANKSHAFT (6076)	26 - 16	6H24	DECALS, SAFETY AND LOCATIONS	170 - 8
1E17	CRANKSHAFT DAMPER, NO PULLEY GROOVES	26 - 70	6I1	DECALS, SAFETY AND LOCATIONS	170 - 10
1C23	CRANKSHAFT FRONT OIL SEAL (6076)	26 - 20	6I3	DECALS, SAFETY AND LOCATIONS	170 - 12
6G24	CROSS AUGER BEARING PLATE, L.H.	130 - 52	6I5	DECALS, SAFETY AND LOCATIONS	170 - 14
6H3	CROSS AUGER COVERS AND CHANNEL.....	130 - 56	6I7	DECALS, SAFETY AND LOCATIONS	170 - 16
6H1	CROSS AUGERS, GRAIN TANK	130 - 54	6I9	DECALS, SAFETY AND LOCATIONS	170 - 18
4E1	CUP HOLDER (660401-)	90 - 68	6I11	DECALS, SAFETY AND LOCATIONS - FRENCH.....	170 - 20
6C12	CURTAIN, LOWER, STRAW SPREADER	125 - 30	6I13	DECALS, SAFETY AND LOCATIONS - FRENCH.....	170 - 22
6C10	CURTAIN, SPREADER, UPPER.....	125 - 28	6I15	DECALS, SAFETY AND LOCATIONS - FRENCH.....	170 - 24
6G1	CURTAINS, GRAIN TANK.....	130 - 30	6I17	DECALS, SAFETY AND LOCATIONS - FRENCH.....	170 - 26
3D16	CUTTING PLATFORM , 200 SERIES CONVERSION PARTS	70 - 11	6I19	DECALS, SAFETY AND LOCATIONS - FRENCH.....	170 - 28
3G11	CYLINDER AND MOUNTING, UNLOADING AUGER SWING	70 - 82	6I21	DECALS, SAFETY AND LOCATIONS - ITALIAN	170 - 30
3G13	CYLINDER AND MOUNTING, UNLOADING AUGER SWING (650401-655551)	70 - 84	6J1	DECALS, SAFETY AND LOCATIONS - ITALIAN	170 - 34
1C7	CYLINDER BLOCK FITTINGS (6076).....	26 - 4	6J3	DECALS, SAFETY AND LOCATIONS - ITALIAN	170 - 36
5B9	CYLINDER COVER, THRESHING	120 - 1	6J5	DECALS, SAFETY AND LOCATIONS - ITALIAN	170 - 38
5B14	CYLINDER DOOR (CORN & GRAIN) (650401-655400).....	120 - 6	6J7	DECALS, SAFETY AND LOCATIONS - ITALIAN	170 - 40
5B12	CYLINDER DOOR (FOR CORN) (-650400)	120 - 4	6J17	DECALS, SEPARATOR MODULE SAFETY.....	170 - 51
5B16	CYLINDER DOOR (655401-)	120 - 8	6J16	DECALS, TOP	170 - 50
			6B10	DECK, SUPPORTS AND FINS, STRAW CHOPPER.....	125 - 2

ALPHABETICAL INDEX - CONTINUED

GRID	PAGE	GRID	PAGE
2D11	DEFLECTOR - LESS HARVESTRAK (655542-)	5G1	DRIVE SHAFT, GEARCASE MOUNTING AND PRIMARY COUNTERSHAFT
	40 - 50		121 - 24
6H14	DIAL-A-MATIC ELECTRICAL HARNESS	3I21	DRIVE SHIELD, R.H. REAR
	160 - 4		80 - 38
6H12	DIAL-A-MATIC HEADER HEIGHT CONTROL HYDRAULIC LINE AND VALVE BLOCK	3I17	DRIVE SHIELDS, AUGER (R-H SIDE)
	160 - 2		80 - 34
6H13	DIAL-A-MATIC HEADER HEIGHT CONTROL VALVE BLOCK SOLENOID	4F23	DRIVE SHIELDS, CONTOUR MASTER FEEDER HOUSE (660401-660432)
	160 - 3		110 - 16
3E15	DIAL-A-MATIC HEADER HEIGHT CONTROL, VALVE BLOCK SOLENOID	4G1	DRIVE SHIELDS, CONTOUR MASTER FEEDER HOUSE (661186-)
	70 - 34		110 - 18
2G10	DIFFERENTIAL AND TRANSMISSION HOUSING	4F21	DRIVE SHIELDS, SAFETY STOP, FEEDER HOUSE
	50 - 6		110 - 14
2G22	DIFFERENTIAL GEARS	3I13	DRIVE SIDE SHIELDS, SEPARATOR
	50 - 18		80 - 30
2G22	DIFFERENTIAL SHAFTS	6F18	DRIVE TIGHTENER AND IDLER, CLEAN GRAIN ELEVATOR
	50 - 18		130 - 22
4E21	DIODE, A/C COMPRESSOR (650401-) R134A	5H15	DRIVE TIGHTENER, FEEDER HOUSE
	90 - 90		121 - 62
1C25	DIPSTICK, ENGINE OIL (6076)	4F19	DRIVE TIGHTENER, FIXED SPEED FEEDER HOUSE
	26 - 22		110 - 12
6C16	DISC (BELT TYPE), CHAFF SPREADER (-650400)	6E4	DRIVE TIGHTENER, LOWER TAILINGS AUGER
	125 - 34		125 - 72
6C18	DISC, CHAFF SPREADER (DUAL MOTOR) (650401-)	5H5	DRIVE TIGHTENER, PIVOT ARM, CLEANING SHOE AND CONVEYOR AUGER
	125 - 36		121 - 52
2H15	DISPLACEMENT CONTROL VALVE, HYDROSTATIC DRIVE	4F17	DRIVE TIGHTENER, VARIABLE SPEED
	50 - 36		110 - 10
2B11	DOME LIGHT, CAB	2G5	DRIVE WHEELS
	40 - 1		50 - 1
4B20	DOOR AND GLASS, CAB	2G6	DRIVE WHEELS, HIGH FLOATATION PLANETARY FINAL DRIVE
	90 - 12		50 - 2
3J7	DOOR AND SHEET, L.H. FRONT CORNER	6H4	DRIVE, COUNTERSHAFT, UNLOADING AUGER
	80 - 48		130 - 58
4B18	DOOR LATCH, CAB	6H19	DRIVE, CYLINDER INTERMEDIATE, BELTS
	90 - 10		170 - 3
5B14	DOOR, CYLINDER (CORN & GRAIN) (650401-655400)	6H19	DRIVE, CYLINDER, BELTS
	120 - 6		170 - 3
5B12	DOOR, CYLINDER (FOR CORN) (-650400)	1B14	DRIVE, ENGINE
	120 - 4		20 - 8
5B16	DOOR, CYLINDER (655401-)	5H7	DRIVE, FAN, SEPARATOR
	120 - 8		121 - 54
3H13	DOOR, ENGINE ACCESS, HANDRAILS, RADIATOR	5H13	DRIVE, FAN, SPEED CONTROL SHEAVE LINKAGE
	80 - 6		121 - 60
6E23	DOOR, HINGED, CLEAN GRAIN LOWER AUGER	2G25	DRIVE, FINAL
	130 - 2		50 - 21
6C3	DOOR, LOWER, STRAW CHOPPER	2I22	DRIVE, HYDROSTATIC OIL HOSES, UPPER (-655400)
	125 - 20		50 - 68
3I11	DOOR, REAR HOOD	2I20	DRIVE, HYDROSTATIC, LOWER OIL LINES (FOUR WHEEL DRIVE) (655401-)
	80 - 28		50 - 66
3I9	DOOR, REAR HOOD ACCESS AND STOP	2I18	DRIVE, HYDROSTATIC, LOWER OIL LINES (TWO WHEEL DRIVE) (655401-)
	80 - 26		50 - 64
1B10	DOOR, ROTARY SCREEN	2I12	DRIVE, HYDROSTATIC, LOWER OIL LINES (2&4 WHEEL DRIVE)(-655400)
	20 - 4		50 - 58
5B10	DOOR, SEAL AND STONE TRAP, SEPARATOR/ FEEDER HOUSE	2I14	DRIVE, HYDROSTATIC, LOWER OIL LINES (2&4 WHEEL DRIVE)(-655400)
	120 - 2		50 - 60
6C14	DOOR, STRAW SPREADER	1B8	DRIVE, ROTARY SCREEN
	125 - 32		20 - 2
6C1	DOOR, UPPER REAR, STRAW CHOPPER	5H1	DRIVE, SECONDARY COUNTERSHAFT
	125 - 18		121 - 48
3F16	DOUBLE PILOTED, AUGER SWING, SOLENOID CONTROL VALVE	1B12	DRIVES, ENGINE FAN
	70 - 60		20 - 6
1B20	DRAIN, ENGINE CRANKCASE OIL	5F9	DRIVES, ENGINE GEARBOX TO MODULE
	20 - 14		121 - 8
5C9	DRIVE BELT AND BEATER SHAFT	5F11	DRIVES, ENGINE GEARBOX TO MODULE
	120 - 26		121 - 10
5C11	DRIVE BELT, BEATER, IDLER	5H19	DRIVES, STRAW CHOPPER
	120 - 28		121 - 66
6E1	DRIVE BRACKET, TAILINGS AND LOWER TROUGH SUPPORT	6C8	DRIVES, STRAW SPREADER
	125 - 69		125 - 26
6E3	DRIVE CHAIN TIGHTENER, UPPER TAILINGS	4H7	DRIVESHAFT, CONTOUR MASTER (660401-)
	125 - 71		110 - 50
2G14	DRIVE CONTROL CABLE, HYDROSTATIC	3B17	DRUM, BRAKE
	50 - 10		60 - 10
2H15	DRIVE DISPLACEMENT CONTROL VALVE HYDROSTATIC	4G16	DRUM, CHAIN AND IDLER SHAFT, FEEDER CONVEYOR
	50 - 36		110 - 34
1C19	DRIVE GEAR, OIL PUMP (6076)	2D21	DUAL LEVEL MONITOR HARNESS, GRAIN TANK
	26 - 16		40 - 60
5F7	DRIVE GEARCASE, MODULE, L.H.	5C13	DUAL SPEED BEATER DRIVE CONVERSION, 700/400 RPM
	121 - 6		120 - 30
5F5	DRIVE GEARCASE, MODULE, R.H.	2G7	DUAL WHEELS, WIDE-SPACED
	121 - 4		50 - 3
5C5	DRIVE IDLER, STRIPPER BEATER	5G23	DUAL-RANGE CYLINDER DRIVE ADJUSTING BRACKET
	120 - 22		121 - 46
2G12	DRIVE LEVER, CABLE AND SWITCH HYDROSTATI C	5G13	DUAL-RANGE CYLINDER DRIVE GEARCASE
	50 - 8		121 - 36
2H19	DRIVE MOTOR KIT, HYDROSTATIC	5G19	DUAL-RANGE CYLINDER DRIVE INTERMEDIATE SHAFT MOUNTING
	50 - 40		121 - 42
2H17	DRIVE MOTOR, HYDROSTATIC	5G21	DUAL-RANGE CYLINDER DRIVE INTERMEDIATE SHEAVE
	50 - 38		121 - 44
2J11	DRIVE MOTOR, HYDROSTATIC	5G17	DUAL-RANGE CYLINDER DRIVE TIGHTENER
	50 - 82		121 - 40
2H11	DRIVE PISTON ASSEMBLY, HYDROSTATIC	5G15	DUAL-RANGE LOCKOUT ARM
	50 - 32		121 - 38
2H5	DRIVE PUMP, HYDROSTATIC	4C16	DUCTS, HEATER AND AIR CONDITIONING
	50 - 26		90 - 33
2H9	DRIVE PUMP, HYDROSTATIC	4H11	DUST FAN BELT, LH SIDE FEEDER HOUSE-RETROFIT INSTALLATION
	50 - 30		110 - 54
3G5	DRIVE PUMP, REEL/BELT PICKUP		
	70 - 76		
2H7	DRIVE SHAFT SHIELDS, FINAL		
	50 - 28		

ALPHABETICAL INDEX - CONTINUED

GRID		PAGE	GRID		PAGE
4H13	DUST FAN, LH SIDE FEEDER HOUSE-RETROFIT INSTALLATION.....	110 - 56	5F17	ENGINE GEARCASE- SEPARATOR DRIVE WET- CLUTCH AND PUMP DRIVE SHAFT	121 - 16
E					
1E5	E.C.U. (6076HH030, HH034) (ROBERT BOSCH) (LATE DESIGN)	26 - 58	5F21	ENGINE GEARCASE, SEPARATOR AND PUMP DRIVE	121 - 20
1E3	ECU (6076HH030) (EARLY DESIGN)	26 - 56	5F23	ENGINE GEARCASE, SEPARATOR AND PUMP DRIVE	121 - 22
1F4	ELECTRIC FUEL PUMP, WATER SEPARATOR AND FUEL FLOAT	30 - 4	5F15	ENGINE GEARCASE, STRAW CHOPPER, UNLOAD- ING DRIVE AND SEPARATOR DRIVE GEAR	121 - 14
2F16	ELECTRICAL CONNECTOR SERVICE KIT	40 - 104	5F13	ENGINE GEARCASE, UNLOADING AND SEPARATOR DRIVE GEAR.....	121 - 12
2F18	ELECTRICAL CONNECTOR SERVICE KIT	40 - 106	1B18	ENGINE MOUNTS AND REAR SUPPORT (655401-)	20 - 12
6H14	ELECTRICAL HARNESS, DIAL-A-MATIC.....	160 - 4	1C5	ENGINE OIL (TORQ-GARD)	26 - 1
2F5	ELECTRICAL SERVICE OUTLET	40 - 93	1D9	ENGINE OIL COOLER	26 - 34
1E13	ELECTRICAL TERMINALS AND CONNECTORS, WEATHERPACK (6076)	26 - 66	1C25	ENGINE OIL DIPSTICK (6076)	26 - 22
5G7	ELECTROMAGNETIC HEADER CLUTCH	121 - 30	1C25	ENGINE OIL DIPSTICK TUBE (6076)	26 - 22
1E5	ELECTRONIC CONTROL UNIT (ROBERT BOSCH) (6076HH030, HH034) (LATE DESIGN)	26 - 58	1D9	ENGINE OIL FILTER	26 - 34
2E15	ELECTRONIC CONTROL UNIT MOUNTING SUPPORT	40 - 78	1D6	ENGINE OIL PUMP	26 - 30
1E5	ELECTRONIC FUEL INJ. PUMP (ROBERT BOSCH) (6076HH030, HH034) (LATE DESIGN)	26 - 58	1D8	ENGINE OIL PUMP INTAKE.....	26 - 32
1E3	ELECTRONIC FUEL INJECTION PUMP (6076HH030) (EARLY DESIGN)	26 - 56	1C15	ENGINE OVERHAUL KIT(S) (ESN 500000-).....	26 - 12
2E17	ELECTRONICS MODULE AND CIRCUIT BOARD, CENTRAL.....	40 - 80	2D17	ENGINE PLUGGED AIR FILTER WARNING SWITCH ..	40 - 56
5D15	ELEMENT, CHAFFER	120 - 58	3H17	ENGINE RAILS	80 - 10
5D17	ELEMENT, CHAFFER	120 - 60	1E15	ENGINE REBUILD GASKET KIT (6076)	26 - 68
5D19	ELEMENT, CHAFFER EXTENSION	120 - 62	1E22	ENGINE SPEED SENSOR	26 - 75
5D23	ELEMENT, SIEVE	120 - 66	2B16	ENGINE TEMPERATURE GAUGE	40 - 6
6F1	ELEVATOR AND CONVEYOR CHAIN, CLEAN GRAIN LOWER	130 - 4	4C17	ENGINE TEMPERATURE GAUGE	90 - 34
6F3	ELEVATOR AND CONVEYOR CHAIN, CLEAN GRAIN LOWER	130 - 6	1C17	ENGINE UNDERHAUL KIT (STD BRGS) (6076).....	26 - 14
6F7	ELEVATOR SHAFT, SPROCKET AND SHEAVE, UPPER CLEAN GRAIN.....	130 - 10	1F10	ETHER STARTING AID (655615-)	30 - 10
6F20	ELEVATOR SHIELDS, UPPER CLEAN GRAIN.....	130 - 24	1D25	ETHER STARTING FITTINGS (6076).....	26 - 53
6H19	ELEVATOR, CLEAN GRAIN BELTS.....	170 - 3	1D24	EXHAUST MANIFOLD.....	26 - 52
6D23	ELEVATOR, TAILINGS, HOUSING.....	125 - 66	1D24	EXHAUST MANIFOLD GASKETS.....	26 - 52
6F5	ELEVATOR, UPPER CLEAN GRAIN	130 - 8	1F14	EXHAUST PIPES AND MUFFLER	30 - 14
3H13	ENGINE ACCESS DOOR, HANDRAILS, AND RADIATOR DOOR.....	80 - 6	1D1	EXHAUST VALVE SHIELD (6076)	26 - 24
3H23	ENGINE ACCESS PLATFORM AND STEP	80 - 16	1D1	EXHAUST VALVES (6076)	26 - 24
2E9	ENGINE CIRCUIT BREAKERS	40 - 72	1C15	EXPANDED ENGINE OVERHAUL KIT(S) (ESN 500000-).....	26 - 12
2E6	ENGINE CIRCUIT BREAKERS (-660400)	40 - 69	4F5	EXPORT ONLY, CAB POST INSTRUMENT PANEL LH	90 - 98
2E7	ENGINE CIRCUIT BREAKERS (660401-)	40 - 70	5D19	EXTENSION ELEMENT, CHAFFER	120 - 62
3H17	ENGINE COMPARTMENT.....	80 - 10	6G3	EXTENSIONS, GRAIN TANK	130 - 32
3H19	ENGINE COMPARTMENT.....	80 - 12	F		
3H21	ENGINE COMPARTMENT, AIR DUCT AND AIR DEF LECTOR.....	80 - 14	1B12	FAN AND DRIVES, ENGINE.....	20 - 6
1B15	ENGINE COOLANT HEATER	20 - 9	3I19	FAN DRIVE AND MUD SHIELDS (L.H. SIDE).....	80 - 36
1D17	ENGINE COOLANT HEATER (6076)	26 - 44	5H9	FAN DRIVE SPEED CONTROL LINKAGE (-655400)	121 - 56
1B20	ENGINE CRANKCASE OIL DRAIN.....	20 - 14	5H11	FAN DRIVE SPEED CONTROL LINKAGE (655401-)	121 - 58
1B14	ENGINE DRIVE	20 - 8	5H13	FAN DRIVE SPEED CONTROL SHEAVE LINKAGE.....	121 - 60
1B12	ENGINE FAN AND DRIVES	20 - 6	5H7	FAN DRIVE, SEPARATOR	121 - 54
5F9	ENGINE GEARBOX TO MODULE DRIVES.....	121 - 8	2C7	FAN, AIR CONDITIONER PRESSURIZER KIT (640401-650400)	40 - 22
5F11	ENGINE GEARBOX TO MODULE DRIVES.....	121 - 10	6H20	FAN, CLEANING, BELTS	170 - 4
5F19	ENGINE GEARCASE.....	121 - 18	4H13	FAN, DUST, LH SIDE FEEDER HOUSE-RETROFIT INSTALLATION.....	110 - 56
1B19	ENGINE GEARCASE COUPLING WITH HUB.....	20 - 13	4E8	FAN, PRESSURIZER AND AIR CONDITIONING/ HEATER	90 - 76
3H3	ENGINE GEARCASE OIL FILTER ASSEMBLY	70 - 98	5C24	FANS AND SHROUDS, CLEANING	120 - 42
3F5	ENGINE GEARCASE PRESSURE REGULATOR	70 - 48	5D1	FANS AND SHROUDS, CLEANING	120 - 44
3H5	ENGINE GEARCASE PRESSURE REGULATOR, SOLENOID CONTROL VALVE.....	70 - 100	5B17	FC:5652	120 - 9
			4G20	FEED PLATE LATCH HANDLE	110 - 38
			6H18	FEEDER CONVEYOR BELTS.....	170 - 2

ALPHABETICAL INDEX - CONTINUED

GRID		PAGE	GRID		PAGE
4G18	FEEDER CONVEYOR DRIVE CHAIN, TIGHTENER AND GUIDES.....	110-36	6D9	FITTINGS AND LINES, CHAFF SPREADER	125-52
4H9	FEEDER CONVEYOR DRIVE CHAIN, TIGHTENER AND GUIDES-RETROFIT INATALLATION.....	110-52	1C7	FITTINGS, CYLINDER BLOCK (6076)	26-4
4G16	FEEDER CONVEYOR IDLER SHAFT, DRUM AND CHAIN	110-34	1D25	FITTINGS, ETHER STARTING (6076)	26-53
2F10	FEEDER HOUSE BACKSHAFT SPEED SENSOR	40-98	1F2	FITTINGS, FUEL TANK.....	30-2
6H20	FEEDER HOUSE BELTS	170-4	1F6	FITTINGS, TANK FUEL LINES	30-6
4F23	FEEDER HOUSE DRIVE SHIELDS - CONTOUR MASTER (660401-660432)	110-16	3G19	FITTINGS, TILT CYLINDER - CONTOUR MASTER (660401-)	70-90
4G1	FEEDER HOUSE DRIVE SHIELDS - CONTOUR MASTER (661186-).....	110-18	3C17	FIXED REAR AXLE (GRAIN) (655542-)	60-34
4F21	FEEDER HOUSE DRIVE SHIELDS AND SAFETY STOP	110-14	3C21	FIXED REAR AXLE STEERING TIE RODS GRAIN (655542-).....	60-38
5H15	FEEDER HOUSE DRIVE TIGHTENER.....	121-62	3C20	FIXED REAR AXLE, 4-WHEEL DRIVE, STEERING TIE RODS - GRAIN (655542-).....	60-37
4F19	FEEDER HOUSE DRIVE TIGHTENER (FIXED SPEED)	110-12	4F19	FIXED SPEED FEEDER HOUSE DRIVE TIGHTENER ..	110-12
4H11	FEEDER HOUSE DUST FAN BELT, LH SIDE - RETROFIT INSTALLATION	110-54	3H6	FLAT O-RING KIT, HYDRAULIC.....	70-101
4H13	FEEDER HOUSE DUST FAN, LH SIDE - RETROFIT INSTALLATION	110-56	1F4	FLOAT, FUEL.....	30-4
4G14	FEEDER HOUSE FLOOR	110-32	4B10	FLOOR MAT AND PANELS, CAB	90-2
4G3	FEEDER HOUSE FRAME	110-20	4G14	FLOOR, FEEDER HOUSE	110-32
4G7	FEEDER HOUSE FRAME, TILT BEAM & CLOSURE PLATES, CONTOUR MASTER (660401-)	110-24	2J9	FLOW CONTROL VALVE TO CAM LOBE MOTORS, LINES AND HOSES	50-80
4H5	FEEDER HOUSE FRONT DRIVE SHAFT, SHEAVE AND MOUNTINGS (FIXED SPEED WITH.....	110-48	3D11	FLOW CONTROL VALVE, REEL DRIVE	70-6
4H1	FEEDER HOUSE RETURN FLOOR.....	110-44	6D7	FLOW CONTROL VALVE, REEL DRIVE	125-50
4C21	FEEDER HOUSE REVERSER FOOT CONTROL	90-38	1C22	FLYWHEEL (6076).....	26-19
4F13	FEEDER HOUSE REVERSER FOOT CONTROL	110-6	4B12	FOAM, SEALS, SOUND DEADENING, CAB	90-4
4G5	FEEDER HOUSE SHELL - CONTOUR MASTER (660401-)	110-22	1C24	FOLLOWER, CAMSHAFT	26-21
4G22	FEEDER HOUSE SLIP CLUTCH	110-40	1D3	FOLLOWER, CAMSHAFT	26-26
4G12	FEEDER HOUSE UPPER SHAFT	110-30	4F13	FOOT CONTROL, FEEDER HOUSE REVERSER.....	110-6
3D15	FEEDER HOUSE VARIABLE DRIVE HYDRAULIC HOSE	70-10	4C21	FOOT CONTROL, REVERSER, FEEDER HOUSE	90-38
4G5	FEEDER HOUSE WEAR PLATES - CONTOUR MASTER (660401-)	110-22	4D6	FORE-AND-AFT, SEAT ADJUST	90-48
4G24	FEEDER HOUSE, UPPER COUNTERSHAFT VARIABLE DRIVE	110-42	2G10	FORKS, SHIFTER	50-6
3E1	FEEDERHOUSE FITTINGS, HYDRAULIC - EXPORT....	70-20	2J17	FOUR WHEEL DRIVE CASE DRAIN HYDRAULIC LINES	50-88
3E1	FEEDERHOUSE PLUMBING- EXPORT	70-20	2J5	FOUR WHEEL DRIVE HYDRAULIC LINES AND HOSES, L.H. (-655400)	50-76
2B14	FIELD LIGHT SWITCH, AUX, OPTIONAL	40-4	2J7	FOUR WHEEL DRIVE HYDRAULIC LINES AND HOS ES, L.H. (655401-).....	50-78
2B20	FIELD LIGHTING, AUXILIARY	40-10	2J9	FOUR WHEEL DRIVE LINES AND HOSES	50-80
2F9	FIELD LIGHTS	40-97	3C13	FOUR-WHEEL DRIVE	60-30
1E19	FIELD WINDING COIL (12V F4).....	26-72	5E14	FRAME AND COVERS, MODULE	120-82
5E18	FILLER PLATE, MODULE GRATE ASSEMBLY AND FINGER BAR	120-86	4B22	FRAME AND SUPPORT, CAB	90-14
3D13	FILTER ASSEMBLY, MAIN, HYDRAULIC	70-8	5D13	FRAME ARMS, PRECLEANER CHAFFER	120-56
1D9	FILTER, ENGINE OIL	26-34	5D21	FRAME, CHAFFER	120-64
1E11	FILTER, FUEL (6076HH030, HH034)	26-64	4G3	FRAME, FEEDER HOUSE	110-20
3H3	FILTER, OIL, ENGINE GEARCASE, ASSEMBLY	70-98	4G7	FRAME, FEEDER HOUSE, CONTOUR MASTER (660401-)	110-24
1D12	FILTER, WEEP HOLE (WATER PUMP).....	26-38	3H11	FRAME, SEPARATOR.....	80-4
4E6	FILTERS, AIR CONDITIONING AND HEATER HOUSING.....	90-74	6C20	FRAME, SHIELDS AND HANDLES, CHAFF SPREADER (BELT TYPE) (-650400).....	125-38
2G25	FINAL DRIVE	50-21	5E1	FRAME, SIEVE	120-68
2H2	FINAL DRIVE AXLE, GEAR AND BEARINGS	50-23	6C12	FRAME, STRAW SPREADER.....	125-30
2H1	FINAL DRIVE HOUSING AND BEARING CAP	50-22	2B19	FRONT AND REAR TURN AND TAIL LIGHTS	40-9
2H3	FINAL DRIVE PINION, SHAFTS AND BEARINGS	50-24	2G8	FRONT AXLE	50-4
2H7	FINAL DRIVE SHAFT SHIELDS	50-28	3J7	FRONT CORNER SHEET AND DOOR, L.H.....	80-48
6B18	FINE CUT ROTOR STRAW CHOPPER (PADDLED NARROW (670401-)	125-10	3J3	FRONT CORNER SHEET, R.H.	80-44
6B16	FINE CUT ROTOR STRAW CHOPPER (STRAIGHT NARROW (670401-)	125-8	1C23	FRONT OIL SEAL (6076)	26-20
5E18	FINGER BAR, FILLER PLATE AND MODULE GRATE ASSEMBLY	120-86	4F15	FRONT SHAFT WITH REVERSER (VARIABLE) 9400, 9500 COMBINES	110-8
6B10	FINS, SUPPORTS AND DECK, STRAW CHOPPER.....	125-2	3C5	FRONT STEERING HOSES AND LINES.....	60-22
			4F9	FRONT VARIABLE DRIVE SHEAVE AND MOUNTINGS	110-2
			1D15	FRONT WATER MANIFOLD	26-42
			6J13	FRONT WHEEL DECALS	170-46
			2C21	FRONT, L.H. MAIN WIRING HARNESS.....	40-36
			1E11	FUEL CHECK VALVE (6076HH030, HH034)	26-64
			1F11	FUEL COOLER	30-11
			1E11	FUEL FILTER (6076HH030, HH034)	26-64
			1E11	FUEL FILTER LINES (6076HH030, HH034).....	26-64

ALPHABETICAL INDEX - CONTINUED

GRID		PAGE	GRID		PAGE
2D13	HARNESS, UPPER, ENGINE, 6076	40 - 52	6G9	HORIZONTAL UNLOADING AUGER SWIVEL	130 - 38
1E3	HARNESS, WIRING (6076HH030) (EARLY DESIGN)	26 - 56	2C19	HORN	40 - 34
1E5	HARNESS, WIRING (6076HH030, HH034) (ROBERT BOSCH)(LATE DESIGN)	26 - 58	3F3	HOSE, CHARGE PRESSURE	70 - 46
2C5	HARNESS, WIRING, A/C, HEATER AND AIRSEAT (660401-)	40 - 20	3D15	HOSE, HYDRAULIC, VARIABLE DRIVE, FEEDER HOUSE	70 - 10
2C19	HARNESS, WIRING, MAIN, L.H. FRONT	40 - 34	3E19	HOSE, LINE AND MOUNTING, ONE-HALF GALLON DUAL ACCUMULATOR (-655400)	70 - 38
2D3	HARNESS, WIRING, R.H. MAIN	40 - 42	6D15	HOSES AND LINES, CHAFF SPREADER (DUAL MOTOR) (650401-)	125 - 58
2C1	HARNESS, WIRING, STEERING COLUMN (646237-)	40 - 16	2J9	HOSES AND LINES, FOUR WHEEL DRIVE	50 - 80
2B16	HARVESTRAK	40 - 6	2J5	HOSES AND LINES, FOUR WHEEL DRIVE HYDRAULIC, L.H. (-655400)	50 - 76
4C17	HARVESTRAK	90 - 34	2J7	HOSES AND LINES, FOUR WHEEL DRIVE HYDRAU LIC, L.H. (655401-)	50 - 78
2D9	HARVESTRAK MONITOR SYSTEM	40 - 48	3E9	HOSES AND LINES, HEADER LIFT	70 - 28
2D9	HARVESTRAK WIRING HARNESS	40 - 48	3F9	HOSES AND LINES, HYDRAULIC, CYLINDER SPEED	70 - 52
1D1	HEAD BOLT KIT (6076)	26 - 24	3E5	HOSES AND LINES, HYDRAULIC, REEL FORE- AND-AFT, FRONT	70 - 24
1D1	HEAD, CYLINDER (6076)	26 - 24	3D19	HOSES AND LINES, HYDRAULIC, REEL PUMP	70 - 14
6H20	HEADER BELTS	170 - 4	3D21	HOSES AND LINES, HYDRAULIC, REEL PUMP	70 - 16
5G7	HEADER ELECTROMAGNETIC CLUTCH	121 - 30	2J1	HOSES AND LINES, OIL COOLER, HYDROSTATIC (-665400)	50 - 72
4F5	HEADER HEIGHT CONTROL GAUGE ON LH CAB POST (EXPORT ONLY)	90 - 98	2J3	HOSES AND LINES, OIL COOLER, HYDROSTATIC (665401-)	50 - 74
6H13	HEADER HEIGHT CONTROL VALVE	160 - 3	3G21	HOSES AND LINES, OIL COOLER, WET CLUTCH (-665400)	70 - 92
6H12	HEADER HEIGHT CONTROL, DIAL-A-MATIC HYDRAULIC LINE AND VALVE BLOCK	160 - 2	3G23	HOSES AND LINES, OIL COOLER, WET CLUTCH (665401-)	70 - 94
3E15	HEADER HEIGHT CONTROL, DIAL-A-MATIC, VALVE BLOCK SOLENOID	70 - 34	2I16	HOSES AND LINES, OIL, HYDROSTATIC DRIVE, LOWER (TWO WHEEL DRIVE)(655401-)	50 - 62
6H14	HEADER HEIGHT CONTROL, ELECTRIC HARNESS, DIAL-A-MATIC	160 - 4	3D17	HOSES AND LINES, REEL DRIVE, HYD., FRONT	70 - 12
3D24	HEADER LIFT HYDRAULIC CYLINDER	70 - 19	3D9	HOSES AND LINES, REEL DRIVE, HYDRAULIC, L.H. SIDE (-655400)	70 - 4
3E9	HEADER LIFT HYDRAULIC LINES AND HOSES	70 - 28	3D10	HOSES AND LINES, REEL DRIVE, HYDRAULIC, L.H. SIDE (655401-)	70 - 5
3F12	HEADER LIFT MODULE, SOLENOID CONTROL VALVE	70 - 56	3E3	HOSES AND LINES, REEL LIFT	70 - 22
2E23	HEADER LIGHTS, (EXPORT ONLY)	40 - 86	3C5	HOSES AND LINES, STEERING, FRONT	60 - 22
1A9	HEADERS	10 - 8	3C11	HOSES AND LINES, STEERING, REAR	60 - 28
2E25	HEADLIGHTS UNDER CAB (EXPORT ONLY)	40 - 88	3G7	HOSES AND LINES, UNLOADING AUGER SWING HYDRAULIC CYLINDER	70 - 78
1F11	HEAT EXCHANGER, FUEL	30 - 11	3E13	HOSES AND LINES, UPPER RETURN, HYDRAULIC RESERVOIR	70 - 32
2C9	HEATER AND AIR CONDITIONER SWITCH	40 - 24	3G9	HOSES, GRAIN TANK UNLOADING DRIVE CYLINDER	70 - 80
4C16	HEATER AND AIR CONDITIONING DUCTS	90 - 33	3E11	HOSES, HYDRAULIC, CONTOUR MASTER (L.H.) (OPTIONAL) (660401-)	70 - 30
4E6	HEATER HOUSING AND AIR CONDITIONING FILTERS	90 - 74	6D13	HOSES, LINES AND MOTOR, CHAFF SPREADER (-650400)	125 - 56
4F1	HEATER SYSTEM	90 - 94	6E18	HOSES, LUBE, L. H.	125 - 86
2C3	HEATER WIRING HARNESS (-660400)	40 - 18	6E16	HOSES, LUBE, R. H.	125 - 84
2C5	HEATER WIRING HARNESS (660401-)	40 - 20	2I20	HOSES, OIL, HYDROSTATIC DRIVE, LOWER (FOUR WHEEL DRIVE) (655401-)	50 - 66
1B15	HEATER, ENGINE COOLANT	20 - 9	2I18	HOSES, OIL, HYDROSTATIC DRIVE, LOWER (TWO WHEEL DRIVE) (655401-)	50 - 64
1D17	HEATER, ENGINE COOLANT (6076)	26 - 44	2I14	HOSES, OIL, HYDROSTATIC DRIVE, LOWER (2&4 WHEEL DRIVE)(-655400)	50 - 60
4D8	HEIGHT ADJUSTER, CAB SEAT	90 - 50	2I12	HOSES, OIL, HYDROSTATIC DRIVE, LOWER (2&4 WHEEL DRIVE)(-655400)	50 - 58
2G6	HIGH FLOATATION DRIVE WHEELS PLANETARY FINAL DRIVE	50 - 2	2I22	HOSES, OIL, HYDROSTATIC DRIVE, UPPER (-655400)	50 - 68
2D19	HOLDDOWN, BATTERY	40 - 58	3F7	HOSES, PRESSURE, HYDRAULIC	70 - 50
4E1	HOLDER, CUP (660401-)	90 - 68	1F16	HOSES, RADIATOR	30 - 16
3I5	HOOD, REAR	80 - 22	3B23	HOSES, STEERING, UPPER	60 - 16
3I9	HOOD, REAR, ACCESS DOOR AND STOP	80 - 26	3G19	HOSES, TILT CYLINDER - CONTOUR MASTER (660401-)	70 - 90
6G22	HORIZONTAL UNLOADING AUGER (17- AND 20-FT.)	130 - 50			
6G15	HORIZONTAL UNLOADING AUGER DRIVE GEARCASE	130 - 44			
6G20	HORIZONTAL UNLOADING AUGER HOUSING (EXPORT) (17 AND 20 FT.)	130 - 49A			
6G16	HORIZONTAL UNLOADING AUGER HOUSING (14- AND 17-FT.)	130 - 46			
6G18	HORIZONTAL UNLOADING AUGER HOUSING (17- AND 20-FT.)	130 - 48			
6G13	HORIZONTAL UNLOADING AUGER HUB SUPPORT AND SWITCH	130 - 42			

ALPHABETICAL INDEX - CONTINUED

GRID		PAGE	GRID		PAGE
2I24	HOSES, UPPER, HYDROSTATIC DRIVE (FOUR WHEEL DRIVE)(655401-)	50 - 70	2J13	HYDRAULIC PUMP CONNECTING HARDWARE, HYDROSTATIC DRIVE PUMP	50 - 84
6D11	HOSES, VALVE, PUMP AND LINES, CHAFF SPREADER	125 - 54	3G3	HYDRAULIC PUMP, MAIN	70 - 74
4C15	HOUSING AND AIR FILTER, CAB	90 - 32	3E23	HYDRAULIC RETURN LINES (-655400)	70 - 42
6B22	HOUSING AND KNIFEBANK, STRAW CHOPPER	125 - 14	3F1	HYDRAULIC RETURN LINES (655401-)	70 - 44
6B24	HOUSING AND KNIFEBANK, STRAW CHOPPER	125 - 16	3B23	HYDRAULIC STEERING HOSES, UPPER AND ATTENUATOR	60 - 16
6E6	HOUSING AND PADDLE ASSEMBLY, UPPER TAILINGS AUGER	125 - 74	3E13	HYDRAULIC UPPER RETURN LINES AND HOSES, RESERVOIR	70 - 32
5C20	HOUSING AND SHOE GRAIN SUPPLY AUGERS	120 - 38	3E16	HYDRAULIC/HYDROSTATIC OIL RESERVOIR AND MOUNTINGS	70 - 35
5C22	HOUSING AND SHOE GRAIN SUPPLY AUGERS	120 - 40	2H12	HYDROSTATIC DRIVE CHARGE PUMP	50 - 33
1E7	HOUSING CONNECTORS, FUEL INJECTION PUMP (6076HH030, HHO34)	26 - 60	2H13	HYDROSTATIC DRIVE CHARGE PUMP (RING AND PINION)	50 - 34
2G24	HOUSING COVER, TRANSMISSION AND DIFFERENTIAL	50 - 20	2G14	HYDROSTATIC DRIVE CONTROL CABLE	50 - 10
2H1	HOUSING, FINAL DRIVE	50 - 22	2H15	HYDROSTATIC DRIVE DISPLACEMENT CONTROL VALVE	50 - 36
1E3	HOUSING, FUEL SHUT-OFF SOLENOID (6076HH030) (EARLY DESIGN)	26 - 56	2I24	HYDROSTATIC DRIVE HOSES, UPPER (FOUR WHEEL DRIVE)(655401-)	50 - 70
6G20	HOUSING, HORIZONTAL UNLOADING AUGER (EXPORT) (17 AND 20 FT.)	130 - 49A	2G12	HYDROSTATIC DRIVE LEVER, CABLE AND SWITC H	50 - 8
6G16	HOUSING, HORIZONTAL UNLOADING AUGER (14- AND 17-FT.)	130 - 46	2H17	HYDROSTATIC DRIVE MOTOR	50 - 38
6G18	HOUSING, HORIZONTAL UNLOADING AUGER (17- AND 20-FT.)	130 - 48	2J11	HYDROSTATIC DRIVE MOTOR	50 - 82
2H9	HOUSING, HYDROSTATIC DRIVE PUMP	50 - 30	2H19	HYDROSTATIC DRIVE MOTOR KIT	50 - 40
1D9	HOUSING, OIL COOLER AND FILTER	26 - 34	2I22	HYDROSTATIC DRIVE OIL HOSES, UPPER (-655400)	50 - 68
1C21	HOUSING, REAR OIL SEAL (6076)	26 - 18	2I20	HYDROSTATIC DRIVE OIL LINES AND HOSES, LOWER (FOUR WHEEL DRIVE)(655401-)	50 - 66
3C18	HOUSING, SPINDLE, REAR AXLE	60 - 35	2I16	HYDROSTATIC DRIVE OIL LINES AND HOSES, LOWER (TWO WHEEL DRIVE)(655401-)	50 - 62
6D23	HOUSING, TAILINGS ELEVATOR	125 - 66	2I18	HYDROSTATIC DRIVE OIL LINES AND HOSES, LOWER (TWO WHEEL DRIVE)(655401-)	50 - 64
1D15	HOUSING, THERMOSTAT, FRONT	26 - 42	2I12	HYDROSTATIC DRIVE OIL LINES AND HOSES, LOWER (2&4 WHEEL DRIVE)(-655400)	50 - 58
1D22	HOUSING, TURBOCHARGER CENTER (AIRESEARCH)	26 - 50	2I14	HYDROSTATIC DRIVE OIL LINES AND HOSES, LOWER (2&4 WHEEL DRIVE)(-655400)	50 - 60
1D23	HOUSING, TURBOCHARGER CENTER (SCHWITZER)	26 - 51	2H11	HYDROSTATIC DRIVE PISTON	50 - 32
6G13	HUB SUPPORT AND SWITCH, HORIZONTAL UNLOADING AUGER	130 - 42	2H8	HYDROSTATIC DRIVE PUMP COVER	50 - 29
3D24	HYDRAULIC CYLINDER, HEADER LIFT	70 - 19	2H5	HYDROSTATIC DRIVE PUMP, FRONT COVER AND SHAFT	50 - 26
3D13	HYDRAULIC FILTER ASSEMBLY, MAIN	70 - 8	2H9	HYDROSTATIC DRIVE PUMP, HOUSING, SWASHPLATE, AND SERVO CYLINDERS	50 - 30
3E1	HYDRAULIC FITTINGS, FEEDERHOUSE - EXPORT ...	70 - 20	2H14	HYDROSTATIC MOTOR VALVE	50 - 35
3H6	HYDRAULIC FLAT O-RING KIT	70 - 101	2J1	HYDROSTATIC OIL COOLER LINES AND HOSES (-665400)	50 - 72
3D15	HYDRAULIC HOSE, VARIABLE DRIVE, FEEDER HOUSE	70 - 10	2J3	HYDROSTATIC OIL COOLER LINES AND HOSES (665401-)	50 - 74
3E11	HYDRAULIC HOSES, CONTOUR MASTER (L.H.) (OPTIONAL) (660401-)	70 - 30			I
3F9	HYDRAULIC LINES AND HOSES, CYLINDER SPEED	70 - 52	6F18	IDLER AND DRIVE TIGHTENER, CLEAN GRAIN ELEVATOR	130 - 22
3E9	HYDRAULIC LINES AND HOSES, HEADER LIFT	70 - 28	4G16	IDLER SHAFT, DRUM AND CHAIN, FEEDER CONVEYOR	110 - 34
2J5	HYDRAULIC LINES AND HOSES, L.H., FOUR WHEEL DRIVE (-655400)	50 - 76	5C11	IDLER, BEATER DRIVE BELT	120 - 28
2J7	HYDRAULIC LINES AND HOSES, L.H., FOUR WH EEL DRIVE (655401-)	50 - 78	5C5	IDLER, STRIPPER BEATER DRIVE	120 - 22
3E5	HYDRAULIC LINES AND HOSES, REEL FORE-AND-AFT, FRONT	70 - 24	1D12	IMPELLER, WATER PUMP	26 - 38
3D9	HYDRAULIC LINES AND HOSES, REEL DRIVE L.H. SIDE (-655400)	70 - 4	5C3	INDICATOR, CABLE AND BRACKETS, CONCAVE	120 - 20
3D10	HYDRAULIC LINES AND HOSES, REEL DRIVE L.H. SIDE (655401-)	70 - 5	1E5	INJ. PUMP, ELECTRONIC FUEL (RB) (6076HH030, HH034) (LATE DESIGN)	26 - 58
3D17	HYDRAULIC LINES AND HOSES, REEL DRIVE, FRONT	70 - 12	1E9	INJECTION NOZZLE, FUEL (DENSO) (HH030 OR HH034)	26 - 62
3D19	HYDRAULIC LINES AND HOSES, REEL PUMP	70 - 14	1C23	INJECTION PUMP ACCESS COVER (6076)	26 - 20
3D21	HYDRAULIC LINES AND HOSES, REEL PUMP	70 - 16			
2J17	HYDRAULIC LINES, FOUR WHEEL DRIVE CASE DRAIN	50 - 88			
3E7	HYDRAULIC LINES, REEL FORE-AND-AFT, L.H. SIDE	70 - 26			
3G15	HYDRAULIC MOUNTING, UNLOADING AUGER SWING (655552-)	70 - 86			
3F7	HYDRAULIC PRESSURE LINES AND HOSES	70 - 50			