

H42552 -UN-10NOV94



JOHN DEERE CTS II COMBINE WITH 900 SERIES PLATFORM

JOHN DEERE CTS II (1998-)

(SPECIFICATIONS AND DESIGN SUBJECT TO CHANGE WITHOUT NOTICE)

NOTE

FOR 900 SERIES PLATFORM PARTS INFORMATION, REFER TO JOHN DEERE 900 SERIES PLATFORM PARTS CATALOG - PC-2104.

FOR 40 SERIES CORN HEAD PARTS INFORMATION, REFER TO JOHN DEERE 40 SERIES CORN HEAD PARTS CATALOG - PC-1223.

FOR 50A SERIES ROW-CROP HEAD PARTS INFORMATION, REFER TO JOHN DEERE 50A SERIES ROW-CROP HEAD PARTS CATALOG - PC-1747.

FOR THREE-ROLLER BELT PICKUP PARTS INFORMATION, REFER TO JOHN DEERE THREE-ROLLER BELT PICKUP PARTS CATALOG - PC-2210.

FOR 918 AND 920 DRAPER PARTS INFORMATION, REFER TO JOHN DEERE 918 AND 920 DRAPER PLATFORMS PARTS CATALOG - PC-2212.

FOR 90 SERIES CORN HEAD PARTS INFORMATION, REFER TO JOHN DEERE 90 SERIES CORN HEAD PARTS CATALOG - PC-2404.

IMPORTANT

THIS PARTS CATALOG CONTAINS PARTS INFORMATION FOR THE CTS COMBINE. VINTAGE IS DETERMINED BY THE COMBINE SERIAL NUMBER OR THE PRODUCT IDENTIFICATION NUMBER (PIN). IT IS IMPORTANT THAT THE CORRECT NUMBERS BE USED WHEN ORDERING PARTS.

PRODUCT INFORMATION NUMBER (PIN) PLATE

THE PRODUCT IDENTIFICATION PLATE (PIN) IS LOCATED NEAR THE RIGHT HAND SIDE OF THE TOOL BOX.
AN EXAMPLE OF THE TWO-LINES ON THIS PIN PLATE IS:

HO0CTSIX675000
COMBINE

(FIRST LINE)

HO - MANUFACTURING UNIT (HARVESTER WORKS)

0CTSII - MODEL IDENTIFIER

X - CONFIGURATION CODE/MODELIDENTIFIER SUFFIX

675000 - SEQUENTIAL NUMBER USED IN SERIAL NO. COLUMN

(SECOND LINE)

COMBINE - TYPE OF PRODUCT

COPYRIGHT (C) 2000. DEERE & COMPANY. MOLINE, ILLINOIS. ALL RIGHTS RESERVED.

PARTS LISTING INFORMATION

SERIAL NUMBER OR PRODUCT IDENTIFICATION NUMBER (PIN) INFORMATION SHOWS ON WHICH MACHINES PART MAY BE USED; FOR EXAMPLE:

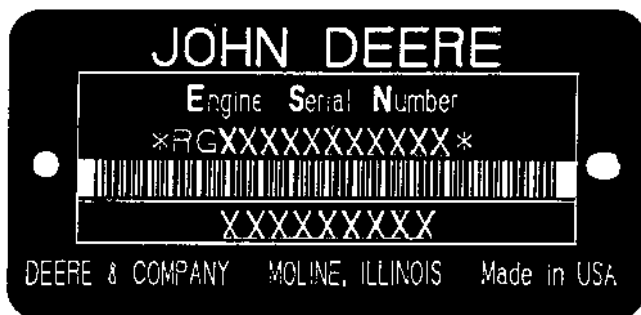
- THE PART CAN BE USED ON ALL MACHINES.
- 000000 THE PART CAN BE USED ON ALL MACHINES UP TO AND INCLUDING THE SERIAL NUMBER LISTED.
- 000000- THE PART CAN BE USED ON ALL MACHINES BEGINNING WITH THE SERIAL NUMBER LISTED.
- 000000-000000 THE PART CAN BE USED ON ALL MACHINES BETWEEN AND INCLUDING SERIAL NUMBERS LISTED.

WHEN XXXXXX'S ARE LISTED IN PLACE OF A SERIAL NUMBER, A SERIAL NUMBER CHANGE WAS MADE, BUT THE EXACT SERIAL NUMBER IS NOT AVAILABLE WHEN THE CATALOG WAS PRINTED.

SHORT BLOCK SERIAL NUMBER PLATE

(-RGSB076882500)

RGP3513 -UN-01JAN94



RGP3513

THE REPLACEMENT SHORT BLOCK ASSEMBLY HAS A SERIAL NUMBER PLATE ATTACHED. THE ORIGINAL ENGINE SERIAL NUMBER MUST BE STAMPED ONTO THE NEW PLATE IN THE BLANK SPACE PROVIDED, AS A REFERENCE FOR YOUR DEALER. THE PLATE CAN BE ATTACHED WITH (2) 37H44 DRIVE SCREWS.

- | | |
|---------------------------------------|----------------------------|
| 1. DESIGNATES ENGINE MANUFACTURER | RG - WATERLOO ENGINE WORKS |
| 2. DESIGNATES REPLACEMENT SHORT BLOCK | SB |
| 3. DESIGNATES LITERS | XXX- 076 (7.6) |
| 4. DESIGNATES THE PRODUCTION DATE | 8825 |
| 5. DESIGNATES COMPONENT SEQUENCE | 00 |

TWO LINE BAR CODED ENGINE SERIAL NUMBER PLATE

RGP4941 -UN-25JUL97



FIRST LINE

RG - WATERLOO ENGINE WORKS

6

081 (8.1 LITERS)

H - AIR-TO-AIR

H

XXXXXX

SECOND LINE

6081HH003

DEFINES

DESIGNATES ENGINE MANUFACTURER.

DESIGNATES NUMBER OF CYLINDERS.

DESIGNATES LITER DISPLACEMENT.

DESIGNATES TYPE OF AIR INTAKE SYSTEM.

DESIGNATES HARVESTER VEHICLE.

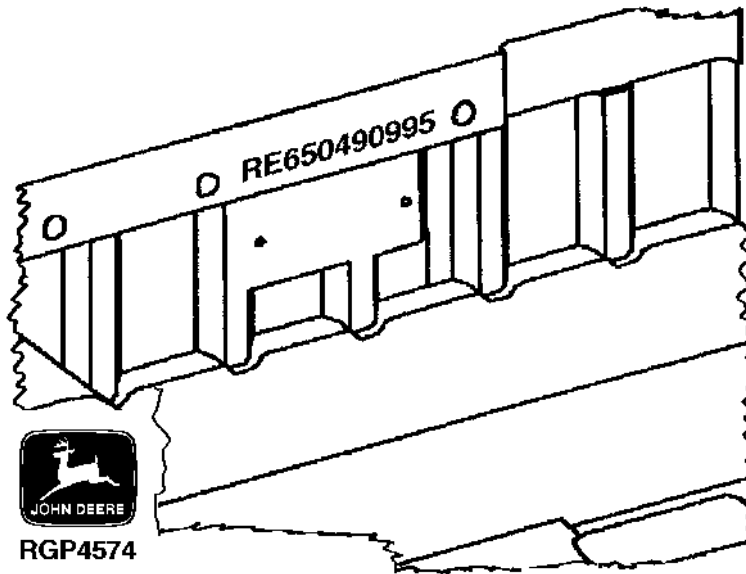
DESIGNATES ENGINE SERIAL NUMBER.

APPLICATION

CTSII

SHORT BLOCK SERIAL NUMBER IDENTIFICATION

RGP4574 -UN-02OCT95



SERIAL NUMBER STAMPED INTO CASTING OF BLOCK NEAR PREVIOUS SERIAL NUMBER PLATE.

EXAMPLE: RE650490995

- | | |
|-----------------------------------|---------|
| 1. DESIGNATES SERVICE PART NUMBER | RE65049 |
| 2. DESIGNATES MONTH ASSEMBLED | 09 |
| 3. DESIGNATES YEAR ASSEMBLED | 95 |

DIRECTION ARROW

ARROWS ARE USED WITH ILLUSTRATIONS TO INDICATE THE FRONT OF THE UNIT. "RIGHT-HAND" AND "LEFT-HAND" SIDES ARE DETERMINED BY FACING IN THE DIRECTION OF MACHINE FORWARD TRAVEL.

BOX-ENCLOSED ILLUSTRATIONS

A KEY NUMBER, SHOWN IN THE PARTS LIST, IS ASSIGNED TO A BOX ENCLOSING ALL PARTS SOLD AS A SERVICE ASSEMBLY. A BOX NOT KEYED INCLUDES NON-CURRENT PARTS.

KITS

KIT INFORMATION WILL BE FOUND IMMEDIATELY FOLLOWING THE STORY IN WHICH IT IS USED. THE ILLUSTRATION IS REPEATED WITH ONLY THE KIT PARTS CALLED OUT AND WITH ALL OTHER PARTS SHOWN IN PHANTOM.

JDM REMANUFACTURED COMPONENTS

THE SERVICE PARTS LISTED IN THIS CATALOG ARE INTENDED FOR THE REPAIR OF ORIGINAL EQUIPMENT COMPONENTS. ALTHOUGH MOST SERVICE PARTS MAY BE USED TO REPAIR REMANUFACTURED COMPONENTS, THE REMANUFACTURED DESIGN MAY CHANGE PARTS SUFFICIENTLY SO THAT SERVICE PARTS ARE INADEQUATE OR NOT USABLE.

BOLT AND CAP SCREW STRENGTH IDENTIFICATION

BOLTS AND CAP SCREWS REQUIRED TO HAVE HIGH-STRENGTH QUALITIES EQUIVALENT TO SAE GRADE 8 ARE IDENTIFIED THROUGHOUT THIS CATALOG BY THE DESCRIPTION HS SAE 8. ALL STANDARD BOLTS AND CAP SCREWS ARE SAE GRADE 5 OR LOWER. BOLTS AND CAP SCREWS REQUIRED TO HAVE HIGH-STRENGTH QUALITIES EQUIVALENT TO PROPERTY CLASS 10.9 ARE IDENTIFIED THROUGHOUT THIS CATALOG BY THE DESCRIPTION HS 10.9. ALL STANDARD BOLTS AND CAP SCREWS ARE PROPERTY CLASS 8.8 OR LOWER.

SI UNITS OF MEASURE

METRIC DIMENSIONS ARE GIVEN, WHERE APPLICABLE, THROUGHOUT THIS PARTS CATALOG.

TRADEMARKS

THROUGHOUT THIS PARTS CATALOG, YOU WILL FIND THE FOLLOWING DEERE & COMPANY TRADEMARKS:

DIAL-A-SPEED™
DIAL-A-MATIC™
HARVESTRAK™
CONTOUR MASTER™

POSI-TORQ™
TORQ-GARD SUPREME®
QUIK-TATCH™

CHANGE INDICATOR LINE

CHANGES AFFECTING THE ORDERING OF PARTS ARE IDENTIFIED BY VERTICAL LINES MARKED IN THE LEFT-HAND MARGIN OF REVISED PARTS LISTING IMAGES. A LINE IS ALSO AT THE LEFT-HAND EDGE OF THE SAME PART NUMBER IN THE NUMERICAL INDEX TO SHOW THE LOCATION OF REVISED INFORMATION.

FUNCTION CODE

(EXAMPLE - FC: 5000)

FUNCTION CODES ARE LOCATED ON EACH PAGE IN THE UPPER RIGHT-HAND CORNER IN THE BOX. THE CODE LISTED IS A GROUPING CODE THAT CAN BE USED FOR WARRANTIES AND FOR DTAC TO IDENTIFY CERTAIN AREAS.

COMPLETE GOODS LISTINGS

COMPLETE GOODS ARE IN BOLD FACE TYPE. ORDER SEPARATELY. DO NOT INCLUDE ON REPLACEMENT PARTS ORDER.

FOR INDIVIDUAL HEADER PARTS CATALOGS REFER TO:

PC-2104 - PARTS CATALOG FOR JOHN DEERE 900 SERIES PLATFORMS

PC-2210 - PARTS CATALOG FOR JOHN DEERE THREE ROLLER BELT PICK-UP

PC-2212 - PARTS CATALOG FOR JOHN DEERE 918 DRAPER PLATFORMS

PC-1747 - PARTS CATALOG FOR JOHN DEERE 50A SERIES ROW-CROP HEADS

PC-1223 - PARTS CATALOG FOR JOHN DEERE 40 SERIES CORN HEADS

PC2404 - PARTS CATALOG FOR JOHN DEERE 90 SERIES CORN HEADS

SECTION INDEX

SECTION 10 - GENERAL INFORMATION

SECTION 20 - ENGINE FAN, INTERCOOLER AND SCREENS

SECTION 24 - ENGINE

SECTION 30 - FUEL AND AIR

SECTION 40 - ELECTRICAL

SECTION 50 - POWER TRAIN

SECTION 60 - STEERING AND BRAKES

SECTION 70 - HYDRAULICS

SECTION 80 - SEPARATOR SHELL

SECTION 90 - OPERATOR'S STATION

SECTION 110 - FEEDER HOUSE

SECTION 120 - THRESHING AND SEPARATION

SECTION 121 - DRIVES

SECTION 125 - RESIDUE DISPOSAL

SECTION 130 - CLEAN GRAIN ELEVATOR, GRAIN TANK AND UNLOADING AUGER

SECTION 160 - DIAL-A-MATIC HEADER HEIGHT CONTROL

SECTION 170 - DECALS, BELTS AND CHAINS

SECTION 180 - NUMERICAL INDEX

ALPHABETICAL INDEX

GRID	A	PAGE	GRID	PAGE	
3G20	A/C COMPRESSOR COVER R134A	90 - 79	1E15	ALTERNATOR BRACKET	24 - 62
3G19	A/C COMPRESSOR HOSE	90 - 77	1I9	ALTERNATOR MOUNTING	40 - 70
3G18	A/C COMPRESSOR MANIFOLD R134A	90 - 76	1E15	ALTERNATOR SUPPORT	24 - 62
3G20	A/C COMPRESSOR PULLEY R134A	90 - 79	1I5	ALTERNATOR, SHEAVE AND BELT - BOSCH.....	40 - 66
3G18	A/C COMPRESSOR R134A	90 - 76	5C13	ANGLES, GRAIN TANK EXTENSIONS	130 - 34
3G22	A/C COMPRESSOR SEAL KIT R134A.....	90 - 81	1G16	ANTENNA, SPEAKERS AND RADIO	40 - 28
3G18	A/C COMPRESSOR SEAL R134A	90 - 76	4G3	ARM, LOCKOUT, DUAL-RANGE	121 - 38
2J13	A/C CONDENSER AND OIL COOLER.....	70 - 74	3C1	ARM, REAR LADDER LANDING LATCH.....	80 - 20
1B21	A/C CONDENSER, RADIATOR.....	20 - 18	2D9	ARM, STEERING	50 - 56
1E15	ACCESS COVER FUEL INJECTION PUMP	24 - 62	3G3	ARMREST (L.H.)	90 - 60
3C7	ACCESS DOOR, REAR HOOD AND STOP	80 - 26	3G1	ARMREST ADJUSTING MECHANISM, (R.H.).....	90 - 58
3B21	ACCESS PLATFORM AND STEP, ENGINE	80 - 16	1G3	ARMREST CONTROL PANEL	40 - 14
3C22	ACCESS SHIELD, SERVICE, L.H.	80 - 42	1G1	ARMREST WIRING HARNESS.....	40 - 12
3C20	ACCESS SHIELD, SERVICE, R.H.....	80 - 40	3F23	ARMREST WITH GLOVE BOX (R.H.)	90 - 56
2I4	ACCUMULATOR AND MOUNTING, ONE GALLON	70 - 40	4D11	ARMS, FRAME, PRECLEANER CHAFFER	120 - 56
2I2	ACCUMULATOR AND MOUNTING, ONE HALF GALLON, SINGLE	70 - 38	1C23	ARMS, ROCKER	24 - 20
2G14	ACCUMULATOR PRESSURE GAUGE AND WIRING HARNESS	70 - 2	1E11	ASSEMBLY, CLUTCH (STARTER).....	24 - 58
1D5	ADAPTER, OIL COOLER	24 - 27	2C14	ASSEMBLY, HYDROSTATIC DRIVE PISTON	50 - 34
1D4	ADAPTER, OIL COOLER BYPASS	24 - 26	2I22	ASSEMBLY, SIX STACK SOLENOID CONTROL VALVE	70 - 58
1H1	ADAPTER, WIRING HARNESS (CONTOUR MASTER)	40 - 38	2F5	ATTENUATOR,UPPER, HYDRAULIC STEERING HOSES.....	60 - 18
1H3	ADAPTER, WIRING HARNESS (CONTOUR MASTER)	40 - 40	5E3	AUGER BELTS	170 - 2
1C24	ADHESIVE,ROCKER ARM COVER GASKET	24 - 21	4J18	AUGER CHAIN TIGHTENER, LOWER TAILINGS.....	125 - 42
3F9	ADJUST FORE-AND-AFT, SEAT	90 - 42	4C19	AUGER CLEANOUT DOOR, SHOE GRAIN SUPPLY, HANDLES AND LATCHES	120 - 38
2F21	ADJUSTABLE REAR AXLE.....	60 - 34	4J24	AUGER DRIVE SHIELD, UPPER TAILINGS	125 - 50
2G5	ADJUSTABLE REAR AXLE STEERING TIE RODS	60 - 44	3C15	AUGER DRIVE SHIELDS (R-H SIDE)	80 - 34
3F11	ADJUSTER, CAB SEAT HEIGHT	90 - 44	4J19	AUGER DRIVE TIGHTENER, LOWER TAILINGS	125 - 44
4G11	ADJUSTING BRACKET, CYLINDER DRIVE, DUAL-RANGE	121 - 46	4J24	AUGER DRIVE, UPPER TAILINGS	125 - 50
1I7	ADJUSTING MOTOR, CONCAVE.....	40 - 68	5B17	AUGER HOUSING, LOADING, UPPER CLEAN GRAIN	130 - 12
1I4	ADJUSTING MOTOR, SEPARATOR FAN DRIVE	40 - 65	5B19	AUGER HOUSING, LOADING, UPPER CLEAN GRAIN	130 - 14
4J1	ADJUSTING SCREW KIT, REEL DRIVE FLOW CONTROL VALVE.....	125 - 25	1I1	AUGER LIGHT, UNLOADING, GRAIN TANK.....	40 - 62
1F1	AIR CLEANER AND INTAKE TUBES.....	30 - 8	5C15	AUGER LOWER GEAR CASE, VERTICAL	130 - 36
1G9	AIR CONDITIONER AND HEATER SWITCH.....	40 - 20	1H9	AUGER SENSOR AND WIRING HARNESS, UNLOADING	40 - 46
1E13	AIR CONDITIONER COMPRESSOR FAN PULLEY	24 - 60	5C21	AUGER SWIVEL SUPPORT AND BRACES	130 - 42
1E13	AIR CONDITIONER COMPRESSOR IDLER PULLEY....	24 - 60	5C19	AUGER SWIVEL, HORIZONTAL UNLOADING	130 - 40
1E13	AIR CONDITIONER COMPRESSOR SUPPORT	24 - 60	5B17	AUGER TRANSITION HOUSING	130 - 12
1G7	AIR CONDITIONER WIRING HARNESS	40 - 18	4J12	AUGER TROUGH, LOWER TAILINGS.....	125 - 36
3E20	AIR CONDITIONING AND HEATER DUCTS	90 - 29	1H9	AUGER WIRING HARNESS, UNLOADING	40 - 46
3G10	AIR CONDITIONING AND HEATER HOUSING FILTERS.....	90 - 68	5B7	AUGER, CLEAN GRAIN LOWER AND HINGED DOOR	130 - 2
3G14	AIR CONDITIONING SYSTEM	90 - 72	5D13	AUGER, CROSS, COVERS AND CHANNEL.....	130 - 60
3G16	AIR CONDITIONING SYSTEM, COMPRESSOR R134A	90 - 74	5D7	AUGER, HORIZONTAL UNLOADING (17- AND 20-FT.).....	130 - 54
3G12	AIR CONDITIONING/HEATER AND PRESSURIZER FAN	90 - 70	5C25	AUGER, HORIZONTAL UNLOADING, DRIVE GEARCASE	130 - 46
3E19	AIR FILTER AND HOUSING, CAB	90 - 28	5C23	AUGER, HORIZONTAL UNLOADING, HUB SUPPORT AND SWITCH	130 - 44
1H19	AIR FILTER WARNING SWITCH,ENGINE PLUGGED ..	40 - 56	5B21	AUGER, LOADING, CLEAN GRAIN	130 - 16
1B21	AIR INTER COOLER, RADIATOR	20 - 18	5B23	AUGER, LOADING, CLEAN GRAIN FOLD	130 - 18
3F13	AIR SEAT SUSPENSION	90 - 46	5E4	AUGER, LOWER TAILINGS, BELTS	170 - 3
3F15	AIR SEAT SUSPENSION KITS.....	90 - 48	4J10	AUGER, LOWER TAILINGS, SHAFT AND TIGHTENER.....	125 - 34
3F17	AIR SEAT SUSPENSION KITS.....	90 - 50	5D14	AUGER, UNLOADING, COUNTERSHAFT DRIVE	130 - 62
3F19	AIR SEAT SUSPENSION KITS.....	90 - 52	5D16	AUGER, UNLOADING, DRIVE BELT GUIDE.....	130 - 64
3F21	AIR SEAT SUSPENSION KITS.....	90 - 54	5D19	AUGER, UNLOADING, LUBE BANK	130 - 68
1G7	AIR SEAT WIRING HARNESS	40 - 18	4J24	AUGER, UPPER TAILINGS.....	125 - 50
3F15	AIR SUSPENSION KITS, SEAT	90 - 48	4J21	AUGER, UPPER TAILINGS, HOUSING AND PADDLE ASSEMBLY	125 - 46
3F17	AIR SUSPENSION KITS, SEAT	90 - 50	5C17	AUGER, VERTICAL UNLOADING AND CHARGE HOUSING.....	130 - 38
3F19	AIR SUSPENSION KITS, SEAT	90 - 52	5D11	AUGERS, GRAIN TANK CROSS	130 - 58
3F21	AIR SUSPENSION KITS, SEAT	90 - 54	4C22	AUGERS, SHOE GRAIN SUPPLY AND HOUSING.....	120 - 42
3F13	AIR SUSPENSION, SEAT	90 - 46	4C20	AUGERS, SUPPLY, SHOE GRAIN AND HOUSING	120 - 40
1E15	ALTERNATOR ADJUSTING STRAP.....	24 - 62			
1I6	ALTERNATOR AND VOLTAGE REGULATOR (95 AMP), BOSCH	40 - 67			

ALPHABETICAL INDEX - CONTINUED

GRID		PAGE	GRID		PAGE
1F17	AUX FIELD LIGHT SWITCH, OPTIONAL.....	40 - 4	5E4	BELTS, ROTARY SCREEN.....	170 - 3
1F23	AUXILIARY FIELD LIGHTING.....	40 - 10	5E5	BELTS, STRAW CHOPPER.....	170 - 4
2B16	AXLE SPACERS.....	50 - 10	5E5	BELTS, STRAW SPREADER.....	170 - 4
2C5	AXLE, FINAL DRIVE.....	50 - 24	5E5	BELTS, UNLOADING AUGERS.....	170 - 4
2F22	AXLE, FIXED REAR (GRAIN).....	60 - 35	5E6	BELTS, UNLOADING SYSTEM.....	170 - 5
2B15	AXLE, FRONT.....	50 - 9	5E6	BELTS, UPPER TAILINGS AUGER.....	170 - 5
2F21	AXLE, REAR, ADJUSTABLE.....	60 - 34	5E3	BELTS, WALKER.....	170 - 2
2G1	AXLE, REAR, SPINDLES.....	60 - 40	2I16	BI-DIRECTIONAL MODULE, SOLENOID CONTROL VALVE, REEL LIFT AND CYLINDER SPEED.....	70 - 52
2F23	AXLE, REAR, SUPPORT.....	60 - 36	1B17	BLOCK, ENGINE, COOLANT HEATER.....	20 - 14
B			1C9	BLOCK, SHORT.....	24 - 6
3F5	BACKREST AND SEAT, OPERATOR'S.....	90 - 38	1C21	BOLTS, CYLINDER HEAD.....	24 - 18
1J15	BACKSHAFT SPEED SENSOR, FEEDER HOUSE.....	40 - 100	1I6	BOSCH ALTERNATOR AND VOLTAGE REGULATOR.....	40 - 67
5D19	BANK, LUBE, UNLOADING AUGER.....	130 - 68	1I5	BOSCH ALTERNATOR, SHEAVE AND BELT.....	40 - 66
1E3	BASE, FUEL FILTER.....	24 - 50	3E13	BOX, TOOL.....	90 - 22
1D6	BASE, OIL FILTER.....	24 - 28	5C21	BRACES AND SWIVEL SUPPORT, AUGER.....	130 - 42
1I13	BATTERIES, CABLE AND HOLDDOWN.....	40 - 74	1E15	BRACKET, ALTERNATOR.....	24 - 62
4E7	BEARING AND LUBE LINES, MODULE FRONT.....	120 - 78	2E24	BRACKET, BRAKE CABLE SUPPORT.....	60 - 13
2C4	BEARING CAP, FINAL DRIVE.....	50 - 23	1I11	BRACKET, REEL SPEED MOTOR.....	40 - 72
1E17	BEARING KIT, UNDERSIZED MAIN BEARING CRANKSHAFT.....	24 - 64	4J17	BRACKET, TAILINGS DRIVE AND LOWER TROUGH SUPPORT.....	125 - 41
5D9	BEARING PLATE, CROSS AUGER, L.H.....	130 - 56	4C1	BRACKETS, CONCAVE INDICATOR AND CABLE.....	120 - 20
2D4	BEARING, COVER AND QUILL.....	50 - 51	1H13	BRACKETS, LOW SHAFT SPEED SENSORS.....	40 - 50
1C16	BEARING, THRUST.....	24 - 13	2J20	BRACKETS, SOLENOID CONTROL VALVE.....	70 - 81
4J16	BEARINGS, CHAIN AND SPROCKETS, TAILINGS ELEVATOR CONVEYOR.....	125 - 40	2E24	BRAKE CABLE SUPPORT BRACKET.....	60 - 13
2C5	BEARINGS, FINAL DRIVE.....	50 - 24	2E15	BRAKE CYLINDERS, MASTER AND BRAKE PEDALS.....	60 - 4
2C7	BEARINGS, FINAL DRIVE.....	50 - 26	2E17	BRAKE LINES, MASTER CYLINDER AND RESERVOIR.....	60 - 6
1C16	BEARINGS, MAIN.....	24 - 13	2E19	BRAKE MASTER CYLINDER.....	60 - 8
2C24	BEARINGS, SEALS, SHAFT AND OUTER COVER CAM LOBE MOTOR.....	50 - 46	2E13	BRAKE PEDAL AND SEAL, PARKING.....	60 - 2
2B22	BEARINGS, TRANSMISSION INPUT SHAFT.....	50 - 16	2E15	BRAKE PEDALS AND CYLINDERS, MASTER.....	60 - 4
2B24	BEARINGS, TRANSMISSION PINION SHAFT.....	50 - 18	2E21	BRAKE SHOES AND DRUM.....	60 - 10
5E6	BEATER BELTS SHEAVES.....	170 - 5	2E23	BRAKE SLAVE CYLINDER.....	60 - 12
4C17	BEATER COVER.....	120 - 36	1I15	BREAKERS, CIRCUIT, ENGINE COMPARTMENT.....	40 - 76
4C11	BEATER DRIVE BELT IDLER.....	120 - 30	1C6	BUSHING, CAMSHAFT.....	24 - 2
4C13	BEATER DRIVE CONVERSION, DUAL SPEED 700/400 RPM.....	120 - 32	1C20	BUSHING, CAMSHAFT.....	24 - 17
4C15	BEATER GEARCASE AND SHEAVE.....	120 - 34	1D4	BYPASS TUBES, OIL COOLER.....	24 - 26
4B16	BEATER GRATE AND 13-BAR CONCAVE ASSEMBLY.....	120 - 10	1D6	BYPASS VALVE, OIL FILTER.....	24 - 28
4C9	BEATER SHAFT AND DRIVE BELT.....	120 - 28	C		
4C7	BEATER, STRIPPER.....	120 - 26	3E19	CAB AIR FILTER AND HOUSING.....	90 - 28
4C5	BEATER, STRIPPER, DRIVE IDLER.....	120 - 24	1F14	CAB DOME LIGHT.....	40 - 1
1B10	BELT ,ENGINE FAN.....	20 - 6	3E3	CAB DOOR AND GLASS.....	90 - 12
5D16	BELT GUIDE, UNLOADING AUGER DRIVE.....	130 - 64	3E1	CAB DOOR LATCH.....	90 - 10
4H3	BELT PICKUP/REEL CHARGE PUMP MOUNTING AND SHEAVE.....	121 - 62	3E5	CAB FRAME AND SUPPORT.....	90 - 14
1E15	BELT TENSIONER (ALT.).....	24 - 62	3H1	CAB HARDWARE KIT.....	90 - 84
3J1	BELT, FAN, DUST, LH FEEDER HOUSE.....	110 - 48	3D23	CAB INTERIOR TRIM PANELS.....	90 - 8
3F7	BELT, OPERATOR'S SEAT.....	90 - 40	3E15	CAB L.H. LANDING AND MIRROR.....	90 - 24
3F8	BELT, SEAT - TRAINING SEAT.....	90 - 41	3E17	CAB LANDING AND MIRROR (R.H.).....	90 - 26
5E4	BELTS, AIR CONDITIONER COMPRESSOR.....	170 - 3	3D17	CAB PANELS AND FLOOR MAT.....	90 - 2
5E3	BELTS, AUGER.....	170 - 2	1F19	CAB POST INSTRUMENT PANEL.....	40 - 6
5E6	BELTS, BEATER.....	170 - 5	3E21	CAB POST INSTRUMENT PANEL.....	90 - 30
5E4	BELTS, CLEAN GRAIN ELEVATOR.....	170 - 3	3D21	CAB REAR AND SIDE SEALS.....	90 - 6
5E3	BELTS, CONVEYOR FEEDER.....	170 - 2	3E7	CAB ROOF AND SUPPORTS.....	90 - 16
5E4	BELTS, COOLING FAN.....	170 - 3	1F21	CAB ROOF LIGHTS.....	40 - 8
5E4	BELTS, CYLINDER DRIVE.....	170 - 3	3F11	CAB SEAT HEIGHT ADJUSTER.....	90 - 44
5E4	BELTS, DRIVE, CYLINDER INTERMEDIATE.....	170 - 3	3D19	CAB SOUND DEADENING, FOAM AND SEALS.....	90 - 4
5E5	BELTS, FAN, CLEANING.....	170 - 4	1F15	CAB WIRING HARNESS.....	40 - 2
5E3	BELTS, FEEDER CONVEYOR.....	170 - 2	2B8	CABLE AND SWITCH, HYDROSTATIC DRIVE LEVE R.....	50 - 2
5E5	BELTS, FEEDER HOUSE.....	170 - 4	4C1	CABLE, CONCAVE INDICATOR, AND BRACKETS.....	120 - 20
5E5	BELTS, HEADER AND REEL.....	170 - 4	2B10	CABLE, HYDROSTATIC DRIVE CONTROL.....	50 - 4
5E6	BELTS, LOWER TAILINGS AUGER.....	170 - 5	1I13	CABLES, BATTERY.....	40 - 74
5E4	BELTS, LOWER TAINLINGS AUGER.....	170 - 3	2C23	CAM LOBE MOTOR.....	50 - 44
			2D5	CAM, CARRIER AND PISTONS.....	50 - 52

ALPHABETICAL INDEX - CONTINUED

GRID		PAGE	GRID		PAGE
2B19	CAM, SHIFTER, TRANSMISSION AND DIFFERENTIAL	50 - 13	5B23	CLEAN GRAIN LOADING AUGER, FOLD	130 - 18
1C20	CAMSHAFT	24 - 17	5B7	CLEAN GRAIN LOWER AUGER AND HINGED DOOR	130 - 2
1C6	CAMSHAFT BUSHING	24 - 2	5B9	CLEAN GRAIN LOWER ELEVATOR AND CONVEYOR CHAIN	130 - 4
1C20	CAMSHAFT BUSHING	24 - 17	5B11	CLEAN GRAIN LOWER ELEVATOR AND CONVEYOR CHAIN	130 - 6
1C20	CAMSHAFT FOLLOWER.....	24 - 17	5C15	CLEAN OUT CHUTE, GRAIN TANK	130 - 36
1C23	CAMSHAFT FOLLOWER.....	24 - 20	1F1	CLEANER, AIR AND INTAKE TUBES	30 - 8
1C20	CAMSHAFT GEAR.....	24 - 17	4D3	CLEANING FAN INTAKE SHIELDS	120 - 48
2C4	CAP, BEARING, FINAL DRIVE.....	50 - 23	4C24	CLEANING FANS AND SHROUDS	120 - 44
5C15	CAP, GRAIN TANK CLEAN OUT CHUTE	130 - 36	4D1	CLEANING FANS AND SHROUDS	120 - 46
1C6	CAPS, MAIN BEARING	24 - 2	4G17	CLEANING SHOE AND CONVEYOR AUGER PIVOT ARM DRIVE TIGHTENER.....	121 - 52
2D7	CAPS, YOKE AND PIVOTS	50 - 54	1J13	CLEANING SHOE LAMP INSTALLATION	40 - 98
2D5	CARRIER, PISTONS AND CAM	50 - 52	3I1	CLOSURE PLATES, FEEDER HOUSE - CONTOUR MASTER	110 - 22
2E4	CASE DRAIN HYDRAULIC LINES, FOUR WHEEL DRIVE	50 - 75	1E11	CLUTCH ASSEMBLY(STARTER)	24 - 58
1F19	CDC (COMBINE DATA CENTER)	40 - 6	4F17	CLUTCH, HEADER ELECTROMAGNETIC.....	121 - 28
3E21	CDC (COMBINE DATA CENTER)	90 - 30	3I16	CLUTCH, SLIP, FEEDER HOUSE	110 - 38
1I21	CENTRAL ELECTRONICS MODULE AND CIRCUIT BOARDS	40 - 82	1F3	COLD WEATHER STARTING AID	30 - 10
4J6	CHAFF SPREADER (DUAL MOTOR) HOSES AND LINES.....	125 - 30	2F9	COLUMN, STEERING (LOWER).....	60 - 22
4I17	CHAFF SPREADER (DUAL MOTOR) PAN, WINGS AND SEALS.....	125 - 16	2F7	COLUMN, STEERING (UPPER)	60 - 20
4I15	CHAFF SPREADER (DUAL MOTOR) SHIELDS AND HANDLES	125 - 14	3G6	COLUMN, STEERING (UPPER)	90 - 64
4I21	CHAFF SPREADER CONTROL, CHECK VALVE, ROD AND KNOB.....	125 - 20	1F19	COMBINE DATA CENTER	40 - 6
4I13	CHAFF SPREADER DISC (DUAL MOTOR).....	125 - 12	3E21	COMBINE DATA CENTER	90 - 30
4J2	CHAFF SPREADER LINES AND FITTINGS	125 - 26	3B15	COMPARTMENT, ENGINE	80 - 10
4J4	CHAFF SPREADER LINES, HOSES, VALVE AND PUMP	125 - 28	3B17	COMPARTMENT, ENGINE	80 - 12
2G20	CHAFF SPREADER MOTOR (EATON)	70 - 8	3B19	COMPARTMENT, ENGINE	80 - 14
4I19	CHAFF SPREADER MOUNTING SUPPORT	125 - 18	3G21	COMPRESSOR HARDWARE KIT R134A	90 - 80
4J8	CHAFF SPREADER PUMP.....	125 - 32	3G19	COMPRESSOR, A/C, HOSE.....	90 - 77
4G15	CHAFFER DRIVE, CONVEYOR AUGERS AND SIEVE	121 - 50	5E4	COMPRESSOR, AIR CONDITIONING BELTS.....	170 - 3
4D13	CHAFFER ELEMENT.....	120 - 58	3G16	COMPRESSOR, AIR CONDITIONING SYSTEM R134A	90 - 74
4D15	CHAFFER EXTENSION ELEMENT	120 - 60	1I7	CONCAVE ADJUSTING MOTOR	40 - 68
4D17	CHAFFER FRAME	120 - 62	4B16	CONCAVE ASSEMBLY AND BEATER GRATE,13-BAR NARROW	120 - 10
4D11	CHAFFER FRAME ARMS, PRECLEANER	120 - 56	4C1	CONCAVE INDICATOR, CABLE AND BRACKETS.....	120 - 20
4D7	CHAFFER FRAME, PRECLEANER	120 - 52	4C3	CONCAVE INDICATOR, CORN AND SMALL GRAIN....	120 - 22
4D5	CHAFFER, PRECLEANING.....	120 - 50	4B14	CONCAVE, RASP BAR AND GRATE	120 - 8
4J18	CHAIN TIGHTENER, LOWER TAILINGS AUGER.....	125 - 42	4B22	CONCAVE, SPIKE TOOTH.....	120 - 16
3I10	CHAIN, IDLER SHAFT AND DRUM, FEEDER CONVEYOR.....	110 - 32	4B20	CONCAVE, SPIKE-TOOTH	120 - 14
4J16	CHAIN, SPROCKETS AND BEARINGS, TAILINGS ELEVATOR CONVEYOR	125 - 40	2J13	CONDENSER, A/C.....	70 - 74
5D13	CHANNEL AND COVERS, CROSS AUGER	130 - 60	1C13	CONNECTING RODS	24 - 10
5C17	CHARGE HOUSING, VERTICAL UNLOADING AUGER.....	130 - 38	1J7	CONNECTORS AND TERMINALS, SUPPLEMENTARY	40 - 92
2J23	CHARGE PRESSURE HOSE	70 - 84	1E5	CONNECTORS, ELECTRICAL, WEATHERPACK	24 - 52
4H3	CHARGE PUMP MOUNTING AND SHEAVE, REEL/ BELT PICKUP	121 - 62	1D24	CONNECTORS, FUEL INJECTION PUMP HOUSING ..	24 - 46
2C15	CHARGE PUMP, HYDROSTATIC DRIVE	50 - 35	1J9	CONNECTORS, LOWER HARNESS, 6076 ENGINE ENGINE	40 - 94
4I21	CHECK VALVE, ROD, KNOB AND CONTROL, CHAFF SPREADER	125 - 20	1J11	CONNECTORS, UPPER HARNESS, 6076 ENGINE	40 - 96
5C15	CHUTE, GRAIN TANK CLEAN OUT	130 - 36	1I23	CONNECTORS, WEATHERPACK	40 - 84
1F19	CIRCUIT BOARD, COMBINE DATA CENTER.....	40 - 6	1F17	CONSOLE PANEL, OVERHEAD.....	40 - 4
3E21	CIRCUIT BOARD, COMBINE DATA CENTER.....	90 - 30	3I1	CONTOUR MASTER - FEEDER HOUSE FRAME, TILT BEAM & CLOSURE PLATES.....	110 - 22
1I21	CIRCUIT BOARDS, CENTRAL ELECTRONICS MODULE.....	40 - 82	3J7	CONTOUR MASTER DRIVESHAFT	110 - 54
1I15	CIRCUIT BREAKER RELAYS.....	40 - 76	2H19	CONTOUR MASTER HYDRAULIC HOSES, L.H SIDE (OPTIONAL).....	70 - 32
1I15	CIRCUIT BREAKERS, ENGINE COMPARTMENT.....	40 - 76	3I5	CONTOUR MASTER LOCKOUT ADAPTER KIT (BELT PU & 4R CORN HEADS)	110 - 26
5C1	CLEAN GRAIN ELEVATOR DRIVE TIGHTENER AND IDLER.....	130 - 22	2I18	CONTOUR MASTER SOLENOID CONTROL RELIEF VALVE	70 - 54
5B24	CLEAN GRAIN ELEVATOR GEARCASE AND SHEAVE.....	130 - 20	2J9	CONTOUR MASTER TILT CYLINDER.....	70 - 70
5B21	CLEAN GRAIN LOADING AUGER	130 - 16	2J10	CONTOUR MASTER TILT CYLINDER HOSES AND FITTINGS.....	70 - 71
			1H1	CONTOUR MASTER WIRING HARNESS	40 - 38
			1H3	CONTOUR MASTER WIRING HARNESS ADAPTER	40 - 40
			3H23	CONTOUR MASTER, FEEDER HOUSE SHELL, WEAR PLATES AND SEALS	110 - 20

ALPHABETICAL INDEX - CONTINUED

GRID	PAGE	GRID	PAGE		
313	CONTOUR MASTER, LOCKOUT ASSEMBLY (OPTIONAL).....	110 - 24	1C19	COVER, TIMING GEAR.....	24 - 16
2B10	CONTROL CABLE, HYDROSTATIC DRIVE.....	50 - 4	5D13	COVERS AND CHANNEL, CROSS AUGER	130 - 60
1G3	CONTROL PANEL, ARMREST	40 - 14	4E5	COVERS AND FRAME, MODULE	120 - 76
1D22	CONTROL UNIT, ELECTRONIC.....	24 - 44	4E3	CRANK OUT SYSTEM, MODULE	120 - 74
2D11	CONTROL VALVE	50 - 58	1B19	CRANKCASE OIL DRAIN, ENGINE	20 - 16
4J1	CONTROL VALVE ADJUSTING SCREW KIT, REEL DRIVE FLOW	125 - 25	1C14	CRANKSHAFT	24 - 11
2122	CONTROL VALVE MODULE, SIX STACK SOLENOID ASSEMBLY & MOUNTINGS.....	70 - 58	1E9	CRANKSHAFT DAMPERS	24 - 56
2D12	CONTROL VALVE SOLENOID	50 - 59	1C19	CRANKSHAFT FRONT OIL SEAL	24 - 16
4I23	CONTROL VALVE, FLOW, REEL DRIVE	125 - 22	1C15	CRANKSHAFT KIT, UNDERSIZE (CONNECTING ROD JOURNAL).....	24 - 12
2C17	CONTROL VALVE, HYDROSTATIC DRIVE, DISPLACEMENT	50 - 38	1E9	CRANKSHAFT PULLEY AND DAMPERS	24 - 56
4I25	CONTROL VALVE, REEL DRIVE FLOW, SEAL REPAIR KIT	125 - 24	5D9	CROSS AUGER BEARING PLATE, L.H.	130 - 56
2J20	CONTROL VALVE, SOLENOID, BRACKETS.....	70 - 81	5D13	CROSS AUGER COVERS AND CHANNEL.....	130 - 60
2J19	CONTROL VALVE, SOLENOID, ENGINE GEARCASE PRESSURE REGULATOR	70 - 80	5D11	CROSS AUGERS, GRAIN TANK	130 - 58
2119	CONTROL VALVE, SOLENOID, FOR AUGER SWING..	70 - 55	3G5	CUP HOLDER	90 - 62
4I21	CONTROL, CHECK VALVE, ROD AND KNOB, CHAFF SPREADER	125 - 20	4I9	CURTAIN, LOWER, STRAW SPREADER	125 - 8
1J19	CONVENIENCE OUTLET	40 - 104	4I7	CURTAIN, SPREADER, UPPER.....	125 - 6
1J17	CONVENIENCE OUTLET, KIT	40 - 102	5C9	CURTAINS, GRAIN TANK.....	130 - 30
2G23	CONVERSION PARTS, HUDRAULIC, 200 SERIES CUTTING PLATFORM.....	70 - 11	2G23	CUTTING PLATFORM , 200 SERIES CONVERSION PARTS	70 - 11
4G17	CONVEYOR AUGER AND CLEANING SHOE PIVOT ARM DRIVE TIGHTENER.....	121 - 52	1C6	CYLINDER BLOCK FITTINGS	24 - 2
5E3	CONVEYOR AUGER BELTS,	170 - 2	4B7	CYLINDER COVER, THRESHING	120 - 1
4G15	CONVEYOR AUGERS, SIEVE AND CHAFFER DRIVE	121 - 50	4B10	CYLINDER DOOR	120 - 4
5B9	CONVEYOR CHAIN AND ELEVATOR, CLEAN GRAIN LOWER	130 - 4	4G11	CYLINDER DRIVE ADJUSTING BRACKET, DUAL-RANGE	121 - 46
5B11	CONVEYOR CHAIN AND ELEVATOR, CLEAN GRAIN LOWER	130 - 6	4G1	CYLINDER DRIVE GEARCASE, DUAL-RANGE	121 - 36
3110	CONVEYOR IDLER SHAFT, DRUM AND CHAIN, FEEDER.....	110 - 32	4G7	CYLINDER DRIVE INTERMEDIATE SHAFT MOUNTING, DUAL-RANGE	121 - 42
1B17	COOLANT HEATER, ENGINE BLOCK.....	20 - 14	4G9	CYLINDER DRIVE INTERMEDIATE SHEAVE, DUAL-RANGE	121 - 44
1F9	COOLANT RECOVERY TANK	30 - 16	4G5	CYLINDER DRIVE TIGHTENER, DUAL-RANGE	121 - 40
1D5	COOLER, ENGINE OIL	24 - 27	4F23	CYLINDER DRIVE, SINGLE RANGE	121 - 34
2J13	COOLER, OIL,	70 - 74	4F21	CYLINDER DRIVE, SLOW SPEED.....	121 - 32
2H1	COOLER, OIL, FEEDER HOUSE	70 - 14	1C21	CYLINDER HEAD	24 - 18
2H3	COOLER, OIL, FEEDER HOUSE GEARCASE	70 - 16	1C21	CYLINDER HEAD BOLTS	24 - 18
5E4	COOLING FAN BELTS	170 - 3	1C21	CYLINDER HEAD GASKET	24 - 18
4C3	CORN AND SMALL GRAIN CONCAVE INDICATOR	120 - 22	1E7	CYLINDER HEAD GASKET KIT	24 - 54
3D3	CORNER SHEET AND DOOR, FRONT, L.H.	80 - 48	2F20	CYLINDER KIT, STEERING	60 - 33
3C24	CORNER SHEET, R.H., FRONT.....	80 - 44	1C13	CYLINDER LINERS	24 - 10
3D1	CORNER SHEET, REAR, L H	80 - 46	2I16	CYLINDER SPEED AND REEL LIFT, SOLENOID CONTROL VALVE.....	70 - 52
4G13	COUNTERSHAFT DRIVE, SECONDARY.....	121 - 48	2I12	CYLINDER SPEED HYDRAULIC LINES AND HOSES ..	70 - 48
5D14	COUNTERSHAFT DRIVE, UNLOADING AUGER	130 - 62	2E23	CYLINDER, BRAKE SLAVE	60 - 12
4F13	COUNTERSHAFT GEARCASE, PRIMARY	121 - 24	2E19	CYLINDER, BRAKE, MASTER	60 - 8
4F15	COUNTERSHAFT, PRIMARY, GEARCASE	121 - 26	2J5	CYLINDER, DRIVE, GRAIN TANK UNLOADING.....	70 - 66
1B16	COUPLING WITH HUB, ENGINE GEARCASE	20 - 12	2H21	CYLINDER, HEADER LIFT, HYDRAULIC	70 - 34
4E16	COUPLING, GEARBOX AND SHAFT, MODULE.....	121 - 2	2J3	CYLINDER, HYDRAULIC, UNLOADING AUGER SWING, LINES AND HOSES	70 - 64
4C17	COVER, BEATER	120 - 36	2F19	CYLINDER, STEERING.....	60 - 32
3G20	COVER, COMPRESSOR A/C R134A.....	90 - 79	4B12	CYLINDER, THRESHING, RASP BAR	120 - 6
3B15	COVER, ENGINE.....	80 - 10	4B18	CYLINDER, THRESHING, SPIKE TOOTH.....	120 - 12
2C9	COVER, FRONT, HYDROSTATIC DRIVE PUMP	50 - 28	2J9	CYLINDER, TILT - CONTOUR MASTER	70 - 70
1E15	COVER, FUEL INJECTION PUMP ACCESS	24 - 62	2J10	CYLINDER, TILT, HOSES AND FITTINGS - CONTOUR MASTER.....	70 - 71
2B19	COVER, HOUSING, TRANSMISSION AND DIFFERENTIAL	50 - 13	2J7	CYLINDER, UNLOADING AUGER SWING HYDRAULIC.....	70 - 68
2C11	COVER, HYDROSTATIC DRIVE PUMP.....	50 - 30	2E15	CYLINDERS, MASTER BRAKE AND BRAKE PEDALS	60 - 4
2D1	COVER, INNER	50 - 48	D		
1D5	COVER, OIL COOLER	24 - 27	1C14	DAMPER KEY	24 - 11
2D4	COVER, QUILL AND BEARING	50 - 51	1E9	DAMPERS, CRANKSHAFT	24 - 56
1C24	COVER, ROCKER ARM	24 - 21	1F19	DATA CENTER, COMBINE	40 - 6
1D12	COVER, THERMOSTAT	24 - 34	3E21	DATA CENTER, COMBINE	90 - 30
4B7	COVER, THRESHING CYLINDER	120 - 1	5G5	DECALS, FRONT.....	170 - 52
			5G7	DECALS, FRONT.....	170 - 54

ALPHABETICAL INDEX - CONTINUED

GRID		PAGE	GRID		PAGE
5G10	DECALS, FRONT.....	170 - 58	4C11	DRIVE BELT, BEATER, IDLER.....	120 - 30
5G9	DECALS, FRONT WHEEL.....	170 - 56	4J17	DRIVE BRACKET, TAILINGS AND LOWER TROUGH SUPPORT.....	125 - 41
5G5	DECALS, REAR.....	170 - 52	4J23	DRIVE CHAIN TIGHTENER, UPPER TAILINGS.....	125 - 48
5G7	DECALS, REAR.....	170 - 54	2B10	DRIVE CONTROL CABLE, HYDROSTATIC.....	50 - 4
5G10	DECALS, REAR.....	170 - 58	2C17	DRIVE DISPLACEMENT CONTROL VALVE HYDROSTATIC.....	50 - 38
5G9	DECALS, REAR WHEEL.....	170 - 56	1C14	DRIVE GEAR, OIL PUMP.....	24 - 11
5E7	DECALS, SAFETY AND LOCATIONS.....	170 - 6	4E20	DRIVE GEARCASE, MODULE, L.H.....	121 - 6
5E9	DECALS, SAFETY AND LOCATIONS.....	170 - 8	4E18	DRIVE GEARCASE, MODULE, R.H.....	121 - 4
5E11	DECALS, SAFETY AND LOCATIONS.....	170 - 10	4C5	DRIVE IDLER, STRIPPER BEATER.....	120 - 24
5E13	DECALS, SAFETY AND LOCATIONS.....	170 - 12	2B8	DRIVE LEVER, CABLE AND SWITCH HYDROSTATI C.....	50 - 2
5E15	DECALS, SAFETY AND LOCATIONS.....	170 - 14	2C21	DRIVE MOTOR KIT, HYDROSTATIC.....	50 - 42
5E17	DECALS, SAFETY AND LOCATIONS.....	170 - 16	2C19	DRIVE MOTOR, HYDROSTATIC.....	50 - 40
5E19	DECALS, SAFETY AND LOCATIONS - FRENCH.....	170 - 18	2E5	DRIVE MOTOR, HYDROSTATIC.....	50 - 76
5E21	DECALS, SAFETY AND LOCATIONS - FRENCH.....	170 - 20	2C14	DRIVE PISTON ASSEMBLY, HYDROSTATIC.....	50 - 34
5E23	DECALS, SAFETY AND LOCATIONS - FRENCH.....	170 - 22	2C9	DRIVE PUMP, HYDROSTATIC.....	50 - 28
5F1	DECALS, SAFETY AND LOCATIONS - FRENCH.....	170 - 24	2C12	DRIVE PUMP, HYDROSTATIC.....	50 - 32
5F3	DECALS, SAFETY AND LOCATIONS - FRENCH.....	170 - 26	2J1	DRIVE PUMP, REEL/BELT PICKUP.....	70 - 62
5F5	DECALS, SAFETY AND LOCATIONS - ITALIAN.....	170 - 28	2C6	DRIVE SHAFT SHIELDS, FINAL.....	50 - 25
5F9	DECALS, SAFETY AND LOCATIONS - ITALIAN.....	170 - 32	4F11	DRIVE SHAFT, GEARCASE MOUNTING AND PRIMARY COUNTERSHAFT.....	121 - 22
5F11	DECALS, SAFETY AND LOCATIONS - ITALIAN.....	170 - 34	3C19	DRIVE SHIELD, R.H. REAR.....	80 - 38
5F13	DECALS, SAFETY AND LOCATIONS - ITALIAN.....	170 - 36	3C15	DRIVE SHIELDS, AUGER (R-H SIDE).....	80 - 34
5F15	DECALS, SAFETY AND LOCATIONS - ITALIAN.....	170 - 38	3H19	DRIVE SHIELDS, CONTOUR MASTER FEEDER HOUSE.....	110 - 16
5F17	DECALS, SAFETY AND LOCATIONS - ITALIAN.....	170 - 40	3H17	DRIVE SHIELDS, SAFETY STOP, FEEDER HOUSE....	110 - 14
5F19	DECALS, SAFETY AND LOCATIONS - ITALIAN.....	170 - 42	3C11	DRIVE SIDE SHIELDS, SEPARATOR.....	80 - 30
5F21	DECALS, SAFETY AND LOCATIONS - ITALIAN.....	170 - 44	5C1	DRIVE TIGHTENER AND IDLER, CLEAN GRAIN ELEVATOR.....	130 - 22
5F23	DECALS, SAFETY AND LOCATIONS - ITALIAN.....	170 - 46	4H1	DRIVE TIGHTENER, FEEDER HOUSE.....	121 - 60
5G1	DECALS, SAFETY AND LOCATIONS - ITALIAN.....	170 - 48	3H15	DRIVE TIGHTENER, FIXED SPEED FEEDER HOUSE.....	110 - 12
5G3	DECALS, SAFETY AND LOCATIONS - ITALIAN.....	170 - 50	4J19	DRIVE TIGHTENER, LOWER TAILINGS AUGER.....	125 - 44
5G13	DECALS, SEPARATOR MODULE SAFETY.....	170 - 61	4G17	DRIVE TIGHTENER, PIVOT ARM, CLEANING SHOE AND CONVEYOR AUGER.....	121 - 52
5G12	DECALS, TOP.....	170 - 60	3H13	DRIVE TIGHTENER, VARIABLE SPEED.....	110 - 10
4H7	DECK, SUPPORTS AND FINS, STRAW CHOPPER.....	121 - 66	2B12	DRIVE WHEELS.....	50 - 6
1H14	DEFLECTOR - LESS HARVESTRAK.....	40 - 51	2B13	DRIVE WHEELS, HIGH FLOATATION PLANETARY FINAL DRIVE.....	50 - 7
3B19	DEFLECTOR, ENGINE COMPARTMENT.....	80 - 14	5D14	DRIVE, COUNTERSHAFT, UNLOADING AUGER.....	130 - 62
5D24	DIAL-A-MATIC ELECTRICAL HARNESS.....	160 - 4	5E4	DRIVE, CYLINDER INTERMEDIATE, BELTS.....	170 - 3
5D22	DIAL-A-MATIC HEADER HEIGHT CONTROL HYDRAULIC LINE AND VALVE BLOCK.....	160 - 2	5E4	DRIVE, CYLINDER, BELTS.....	170 - 3
5D23	DIAL-A-MATIC HEADER HEIGHT CONTROL VALVE BLOCK SOLENOID.....	160 - 3	1B12	DRIVE, ENGINE.....	20 - 8
2H22	DIAL-A-MATIC HEADER HEIGHT CONTROL, VALVE BLOCK SOLENOID.....	70 - 35	4G19	DRIVE, FAN, SEPARATOR.....	121 - 54
2B17	DIFFERENTIAL AND TRANSMISSION HOUSING.....	50 - 11	4G23	DRIVE, FAN, SPEED CONTROL SHEAVE LINKAGE....	121 - 58
2C1	DIFFERENTIAL GEARS.....	50 - 20	2C3	DRIVE, FINAL.....	50 - 22
2C1	DIFFERENTIAL SHAFTS.....	50 - 20	2D17	DRIVE, HYDROSTATIC, LOWER OIL LINES (FOUR WHEEL DRIVE).....	50 - 64
1D15	DIPSTICK, ENGINE OIL.....	24 - 37	2D15	DRIVE, HYDROSTATIC, LOWER OIL LINES (TWO WHEEL DRIVE).....	50 - 62
4I13	DISC, CHAFF SPREADER (DUAL MOTOR).....	125 - 12	2G18	DRIVE, REEL, FLOW CONTROL VALVE.....	70 - 6
2C17	DISPLACEMENT CONTROL VALVE, HYDROSTATIC DRIVE.....	50 - 38	1B6	DRIVE, ROTARY SCREEN.....	20 - 2
1F14	DOME LIGHT, CAB.....	40 - 1	4G13	DRIVE, SECONDARY COUNTERSHAFT.....	121 - 48
3E3	DOOR AND GLASS, CAB.....	90 - 12	1B10	DRIVES, ENGINE FAN.....	20 - 6
3D3	DOOR AND SHEET, L.H. FRONT CORNER.....	80 - 48	4E22	DRIVES, ENGINE GEARBOX TO MODULE.....	121 - 8
3E1	DOOR LATCH, CAB.....	90 - 10	4E24	DRIVES, ENGINE GEARBOX TO MODULE.....	121 - 10
4B10	DOOR, CYLINDER.....	120 - 4	4H5	DRIVES, STRAW CHOPPER.....	121 - 64
3B11	DOOR, ENGINE ACCESS, HANDRAILS, RADIATOR.....	80 - 6	4I5	DRIVES, STRAW SPREADER.....	125 - 4
5B7	DOOR, HINGED, CLEAN GRAIN LOWER AUGER.....	130 - 2	3J7	DRIVESHAFT, CONTOUR MASTER.....	110 - 54
4H23	DOOR, LOWER, STRAW CHOPPER.....	121 - 82	2E21	DRUM, BRAKE.....	60 - 10
3C9	DOOR, REAR HOOD.....	80 - 28	3I10	DRUM, CHAIN AND IDLER SHAFT, FEEDER CONVEYOR.....	110 - 32
3C7	DOOR, REAR HOOD ACCESS AND STOP.....	80 - 26	1I1	DUAL LEVEL MONITOR HARNESS, GRAIN TANK.....	40 - 62
1B8	DOOR, ROTARY SCREEN.....	20 - 4	4C13	DUAL SPEED BEATER DRIVE CONVERSION, 700/400 RPM.....	120 - 32
4B8	DOOR, SEAL AND STONE TRAP, SEPARATOR/ FEEDER HOUSE.....	120 - 2			
4I11	DOOR, STRAW SPREADER.....	125 - 10			
4H21	DOOR, UPPER REAR, STRAW CHOPPER.....	121 - 80			
1D12	DRAIN VALVE, CYLINDER HEAD.....	24 - 34			
1D8	DRAIN VALVE, OIL PAN.....	24 - 30			
1B19	DRAIN, ENGINE CRANKCASE OIL.....	20 - 16			
4C9	DRIVE BELT AND BEATER SHAFT.....	120 - 28			

ALPHABETICAL INDEX - CONTINUED

GRID		PAGE	GRID		PAGE
2B14	DUAL WHEELS, WIDE-SPACED (PLANETARY FINAL DRIVE)	50 - 8	4F5	ENGINE GEARCASE- SEPARATOR DRIVE WET- CLUTCH AND PUMP DRIVE SHAFT	121 - 16
4G11	DUAL-RANGE CYLINDER DRIVE ADJUSTING BRACKET.....	121 - 46	4F7	ENGINE GEARCASE, SEPARATOR AND PUMP DRIVE	121 - 18
4G1	DUAL-RANGE CYLINDER DRIVE GEARCASE	121 - 36	4F9	ENGINE GEARCASE, SEPARATOR AND PUMP DRIVE	121 - 20
4G7	DUAL-RANGE CYLINDER DRIVE INTERMEDIATE SHAFT MOUNTING.....	121 - 42	4F3	ENGINE GEARCASE, STRAW CHOPPER, UNLOAD- ING DRIVE AND SEPARATOR DRIVE GEAR	121 - 14
4G9	DUAL-RANGE CYLINDER DRIVE INTERMEDIATE SHEAVE.....	121 - 44	4F1	ENGINE GEARCASE, UNLOADING AND SEPARATOR DRIVE GEAR.....	121 - 12
4G5	DUAL-RANGE CYLINDER DRIVE TIGHTENER	121 - 40	1B14	ENGINE INTERCOOLER.....	20 - 10
4G3	DUAL-RANGE LOCKOUT ARM	121 - 38	1B13	ENGINE MOUNTS AND REAR SUPPORT	20 - 9
3E20	DUCTS, HEATER AND AIR CONDITIONING	90 - 29	1C5	ENGINE OIL (TORQ-GARD PLUS-50).....	24 - 1
3J1	DUST FAN BELT, LH FEEDER HOUSE	110 - 48	1D5	ENGINE OIL COOLER	24 - 27
3I24	DUST FAN, LH SIDE FEEDER HOUSE.....	110 - 46	1D15	ENGINE OIL DIPSTICK.....	24 - 37
2H1	DUST SUPPRESSION, LUBE OIL PUMP	70 - 14	1D15	ENGINE OIL DIPSTICK TUBE	24 - 37
	E		1D6	ENGINE OIL FILTER	24 - 28
1D22	E.C.U.	24 - 44	1D2	ENGINE OIL PUMP	24 - 24
1I17	ECU MOUNTING SUPPORT (SN -XXXXXX)	40 - 78	1D1	ENGINE OIL PUMP INTAKE.....	24 - 23
1E21	ELECTRIC FUEL PUMP, WATER SEPARATOR AND FUEL FLOAT	30 - 4	1C11	ENGINE OVERHAUL KIT	24 - 8
1J1	ELECTRICAL CONNECTOR SERVICE KIT.....	40 - 86	1H19	ENGINE PLUGGED AIR FILTER WARNING SWITCH ..	40 - 56
1J3	ELECTRICAL CONNECTOR SERVICE KIT.....	40 - 88	3B15	ENGINE RAILS	80 - 10
5D24	ELECTRICAL HARNESS, DIAL-A-MATIC.....	160 - 4	1E7	ENGINE REBUILD GASKET KIT	24 - 54
1J8	ELECTRICAL SERVICE OUTLET	40 - 93	1C8	ENGINE SERVICE PARTS, KEY	24 - 4
1E5	ELECTRICAL TERMINALS AND CONNECTORS, WEATHERPACK	24 - 52	1E14	ENGINE SPEED SENSOR	24 - 61
4F17	ELECTROMAGNETIC HEADER CLUTCH	121 - 28	1F19	ENGINE TEMPERATURE GAUGE	40 - 6
1D22	ELECTRONIC CONTROL UNIT	24 - 44	3E21	ENGINE TEMPERATURE GAUGE	90 - 30
1I19	ELECTRONIC CONTROL UNIT MOUNTING SUPPORT	40 - 80	1F3	ETHER STARTING AID.....	30 - 10
1D22	ELECTRONIC FUEL INJECTION PUMP	24 - 44	1D19	ETHER STARTING FITTINGS	24 - 41
1I21	ELECTRONICS MODULE AND CIRCUIT BOARD, CENTRAL.....	40 - 82	1D18	EXHAUST MANIFOLD GASKETS.....	24 - 40
4D13	ELEMENT, CHAFFER	120 - 58	1D18	EXHAUST MANIFOLD HEAT SHIELD	24 - 40
4D15	ELEMENT, CHAFFER EXTENSION	120 - 60	1D18	EXHAUST MANIFOLDS.....	24 - 40
4D19	ELEMENT, SIEVE	120 - 64	1F5	EXHAUST PIPES AND MUFFLER	30 - 12
5B9	ELEVATOR AND CONVEYOR CHAIN, CLEAN GRAIN LOWER	130 - 4	1C21	EXHAUST VALVE SHIELD	24 - 18
5B11	ELEVATOR AND CONVEYOR CHAIN, CLEAN GRAIN LOWER	130 - 6	1C21	EXHAUST VALVES	24 - 18
5B15	ELEVATOR SHAFT, SPROCKET AND SHEAVE, UPPER CLEAN GRAIN.....	130 - 10	4D15	EXTENSION ELEMENT, CHAFFER	120 - 60
5C3	ELEVATOR SHIELDS, UPPER CLEAN GRAIN.....	130 - 24	5C11	EXTENSIONS, GRAIN TANK	130 - 32
5E4	ELEVATOR, CLEAN GRAIN BELTS.....	170 - 3		F	
4J14	ELEVATOR, TAILINGS, HOUSING.....	125 - 38	1I4	FAN DRIVE ADJUSTING MOTOR, SEPARATOR	40 - 65
5B13	ELEVATOR, UPPER CLEAN GRAIN	130 - 8	3C17	FAN DRIVE AND MUD SHIELDS (L.H. SIDE).....	80 - 36
3B11	ENGINE ACCESS DOOR, HANDRAILS, AND RADIATOR DOOR.....	80 - 6	4G21	FAN DRIVE SPEED CONTROL LINKAGE.....	121 - 56
3B21	ENGINE ACCESS PLATFORM AND STEP	80 - 16	4G23	FAN DRIVE SPEED CONTROL SHEAVE LINKAGE.....	121 - 58
1B17	ENGINE BLOCK COOLANT HEATER	20 - 14	1E2	FAN DRIVE, FIXED	24 - 49
1I15	ENGINE CIRCUIT BREAKERS.....	40 - 76	4G19	FAN DRIVE, SEPARATOR	121 - 54
3B15	ENGINE COMPARTMENT.....	80 - 10	1E2	FAN PULLEY HUB.....	24 - 49
3B17	ENGINE COMPARTMENT.....	80 - 12	1E13	FAN PULLEY, AIR CONDITIONER COMPRESSOR	24 - 60
3B19	ENGINE COMPARTMENT.....	80 - 14	5E5	FAN, CLEANING, BELTS	170 - 4
1B19	ENGINE CRANKCASE OIL DRAIN.....	20 - 16	3I24	FAN, DUST, LH SIDE FEEDER HOUSE	110 - 46
1B12	ENGINE DRIVE	20 - 8	1B10	FAN, ENGINE AND DRIVES.....	20 - 6
1B10	ENGINE FAN AND DRIVES	20 - 6	3G12	FAN, PRESSURIZER AND AIR CONDITIONING/ HEATER.....	90 - 70
4E22	ENGINE GEARBOX TO MODULE DRIVES.....	121 - 8	4C24	FANS AND SHROUDS, CLEANING	120 - 44
4E24	ENGINE GEARBOX TO MODULE DRIVES.....	121 - 10	4D1	FANS AND SHROUDS, CLEANING	120 - 46
1B16	ENGINE GEARCASE COUPLING WITH HUB.....	20 - 12	3I14	FEED PLATE LATCH HANDLE	110 - 36
2J15	ENGINE GEARCASE OIL FILTER ASSEMBLY.....	70 - 76	5E3	FEEDER CONVEYOR BELTS.....	170 - 2
2J17	ENGINE GEARCASE PRESSURE REGULATOR	70 - 78	3I12	FEEDER CONVEYOR DRIVE CHAIN, TIGHTENER AND GUIDES.....	110 - 34
2J19	ENGINE GEARCASE PRESSURE REGULATOR, SOLENOID CONTROL VALVE.....	70 - 80	3I10	FEEDER CONVEYOR IDLER SHAFT, DRUM AND CHAIN	110 - 32
			1J15	FEEDER HOUSE BACKSHAFT SPEED SENSOR	40 - 100
			5E5	FEEDER HOUSE BELTS	170 - 4
			3H19	FEEDER HOUSE DRIVE SHIELDS - CONTOUR MASTER	110 - 16

ALPHABETICAL INDEX - CONTINUED

GRID		PAGE	GRID		PAGE
3H17	FEEDER HOUSE DRIVE SHIELDS AND SAFETY STOP	110-14	2G3	FIXED REAR AXLE, 4-WHEEL DRIVE, STEERING TIE RODS - GRAIN.....	60-42
4H1	FEEDER HOUSE DRIVE TIGHTENER.....	121-60	3H15	FIXED SPEED FEEDER HOUSE DRIVE TIGHTENER ..	110-12
3H15	FEEDER HOUSE DRIVE TIGHTENER (FIXED SPEED)	110-12	2J21	FLAT O-RING KIT, HYDRAULIC.....	70-82
3J1	FEEDER HOUSE DUST FAN BELT, LH	110-48	1E21	FLOAT, FUEL.....	30-4
3I24	FEEDER HOUSE DUST FAN, LH SIDE.....	110-46	3D17	FLOOR MAT AND PANELS, CAB	90-2
3I8	FEEDER HOUSE FLOOR	110-30	3I8	FLOOR, FEEDER HOUSE	110-30
3H21	FEEDER HOUSE FRAME	110-18	2E1	FLOW CONTROL VALVE TO CAM LOBE MOTORS, LINES AND HOSES	50-72
3I1	FEEDER HOUSE FRAME, TILT BEAM & CLOSURE PLATES, CONTOUR MASTER.....	110-22	2G18	FLOW CONTROL VALVE, REEL DRIVE	70-6
3J5	FEEDER HOUSE FRONT DRIVE SHAFT, SHEAVE AND MOUNTINGS (FIXED SPEED WITH.....	110-52	4I23	FLOW CONTROL VALVE, REEL DRIVE	125-22
2H3	FEEDER HOUSE GEARCASE OIL COOLER	70-16	1C18	FLYWHEEL.....	24-15
2H5	FEEDER HOUSE OIL COOLER GEARBOX FITTINGS AND HOSES	70-18	1C18	FLYWHEEL HUB	24-15
2G24	FEEDER HOUSE OIL COOLER LUBE OIL PUMP	70-12	3D19	FOAM, SEALS, SOUND DEADENING, CAB	90-4
2H1	FEEDER HOUSE OIL COOLER, LUBE OIL PUMP.....	70-14	1C20	FOLLOWER, CAMSHAFT	24-17
3I20	FEEDER HOUSE RETURN FLOOR.....	110-42	1C23	FOLLOWER, CAMSHAFT	24-20
3F1	FEEDER HOUSE REVERSER FOOT CONTROL	90-34	3H9	FOOT CONTROL, FEEDER HOUSE REVERSER.....	110-6
3H9	FEEDER HOUSE REVERSER FOOT CONTROL	110-6	3F1	FOOT CONTROL, REVERSER, FEEDER HOUSE	90-34
3H23	FEEDER HOUSE SHELL - CONTOUR MASTER	110-20	3F9	FORE-AND-AFT, SEAT ADJUST	90-42
3I16	FEEDER HOUSE SLIP CLUTCH	110-38	2B17	FORKS, SHIFTER	50-11
3I6	FEEDER HOUSE UPPER SHAFT	110-28	2E4	FOUR WHEEL DRIVE CASE DRAIN HYDRAULIC LINES	50-75
2G22	FEEDER HOUSE VARIABLE DRIVE HYDRAULIC HOSE	70-10	2D23	FOUR WHEEL DRIVE HYDRAULIC LINES AND HOS ES, L.H.	50-70
3H23	FEEDER HOUSE WEAR PLATES - CONTOUR MASTER	110-20	2E1	FOUR WHEEL DRIVE LINES AND HOSES	50-72
3I18	FEEDER HOUSE, UPPER COUNTERSHAFT VARIABLE DRIVE	110-40	4E5	FRAME AND COVERS, MODULE	120-76
1F17	FIELD LIGHT SWITCH, AUX, OPTIONAL	40-4	3E5	FRAME AND SUPPORT, CAB	90-14
1F23	FIELD LIGHTING, AUXILIARY	40-10	4D11	FRAME ARMS, PRECLEANER CHAFFER	120-56
1J23	FIELD LIGHTS	40-108	4D17	FRAME, CHAFFER	120-62
4E9	FILLER PLATE, MODULE GRATE ASSEMBLY AND FINGER BAR	120-80	3H21	FRAME, FEEDER HOUSE	110-18
2H23	FILTER ASSEMBLY, MAIN, HYDRAULIC	70-36	3I1	FRAME, FEEDER HOUSE, CONTOUR MASTER	110-22
1F1	FILTER, AIR AND INTAKE TUBES	30-8	3B9	FRAME, SEPARATOR.....	80-4
1D6	FILTER, ENGINE OIL	24-28	4D21	FRAME, SIEVE	120-66
1E3	FILTER, FUEL	24-50	4I9	FRAME, STRAW SPREADER.....	125-8
2J15	FILTER, OIL, ENGINE GEARCASE, ASSEMBLY	70-76	1F22	FRONT AND REAR TURN AND TAIL LIGHTS	40-9
1C19	FILTER, WATER PUMP (WEEP HOLE).....	24-16	2B15	FRONT AXLE.....	50-9
3G10	FILTERS, AIR CONDITIONING AND HEATER HOUSING.....	90-68	3D3	FRONT CORNER SHEET AND DOOR, L.H.....	80-48
2C3	FINAL DRIVE	50-22	3C24	FRONT CORNER SHEET, R.H.	80-44
2C5	FINAL DRIVE AXLE, GEAR AND BEARINGS	50-24	1C19	FRONT OIL SEAL	24-16
2C4	FINAL DRIVE HOUSING AND BEARING CAP	50-23	3H11	FRONT SHAFT WITH REVERSER (VARIABLE) 9400, 9500 COMBINES	110-8
2C7	FINAL DRIVE PINION, SHAFTS AND BEARINGS	50-26	3D7	FRONT SHIELD ASSEMBLY, LEFT SIDE	80-52
2C6	FINAL DRIVE SHAFT SHIELDS	50-25	3D9	FRONT SHIELD ASSEMBLY, RIGHT SIDE.....	80-54
4H13	FINE CUT ROTOR STRAW CHOPPER (PADDLED NARROW (670401-)	121-72	2F3	FRONT STEERING HOSES AND LINES.....	60-16
4H11	FINE CUT ROTOR STRAW CHOPPER (STRAIGHT NARROW (670401-)	121-70	3H5	FRONT VARIABLE DRIVE SHEAVE AND MOUNTINGS	110-2
4E9	FINGER BAR, FILLER PLATE AND MODULE GRATE ASSEMBLY	120-80	1D12	FRONT WATER MANIFOLD.....	24-34
4H7	FINS, SUPPORTS AND DECK, STRAW CHOPPER.....	121-66	5G9	FRONT WHEEL DECALS	170-56
2H5	FITTINGS AND HOSES, OIL COOLER, GEARBOX, FEEDER HOUSE.....	70-18	1E3	FUEL CHECK VALVE	24-50
4J2	FITTINGS AND LINES, CHAFF SPREADER	125-26	1E3	FUEL FILTER.....	24-50
1C6	FITTINGS, CYLINDER BLOCK	24-2	1E3	FUEL FILTER BASE	24-50
1D19	FITTINGS, ETHER STARTING	24-41	1E3	FUEL FILTER LINES	24-50
1E19	FITTINGS, FUEL TANK.....	30-2	1E21	FUEL FLOAT	30-4
1E23	FITTINGS, TANK FUEL LINES.....	30-6	1F19	FUEL GAUGE	40-6
2J10	FITTINGS, TILT CYLINDER - CONTOUR MASTER	70-71	3E21	FUEL GAUGE	90-30
1E2	FIXED FAN DRIVE	24-49	1E1	FUEL INJECTION NOZZLE.....	24-48
2F22	FIXED REAR AXLE (GRAIN)	60-35	1D20	FUEL INJECTION NOZZLES	24-42
2G7	FIXED REAR AXLE STEERING TIE RODS GRAIN	60-46	1D22	FUEL INJECTION PUMP.....	24-44
			1E15	FUEL INJECTION PUMP ACCESS COVER	24-62
			1D24	FUEL INJECTION PUMP HOUSING CONNECTORS	24-46
			1D22	FUEL LEAK-OFF LINES	24-44
			1D20	FUEL LINES.....	24-42
			1D22	FUEL SHUT-OFF SOLENOID (FIP)	24-44
			1E19	FUEL TANK, SUPPORTS, AND FITTINGS	30-2
			1D25	FUEL TRANSFER PUMP (ROBERT BOSCH).....	24-47

ALPHABETICAL INDEX - CONTINUED

GRID		PAGE	GRID		PAGE			
G								
1C24	GASKET ADHESIVE, ROCKER ARM COVER	24 - 21	5D17	GRAIN TANK SAMPLING TROUGH.....	130 - 66			
1E7	GASKET KIT, CYLINDER HEAD	24 - 54	5C5	GRAIN TANK TOP.....	130 - 26			
1E7	GASKET KIT, ENGINE REBUILD	24 - 54	2J5	GRAIN TANK UNLOADING DRIVE CYLINDER.....	70 - 66			
1E7	GASKET KIT, SHORT BLOCK	24 - 54	2J5	GRAIN TANK UNLOADING DRIVE CYLINDER MOUNTING	70 - 66			
1C21	GASKET, CYLINDER HEAD	24 - 18	1H23	GRAIN TANK WIRING HARNESS, LIGHT, LIMIT SWITCH AND LEVEL MONITOR	40 - 60			
1D14	GASKET, INTAKE MANIFOLD	24 - 36	4B14	GRATE AND RASP BAR CONCAVE	120 - 8			
1D6	GASKET, OIL FILTER HOUSING	24 - 28	5D16	GUIDE, DRIVE BELT, UNLOADING AUGER.....	130 - 64			
1D8	GASKET, OIL PAN	24 - 30	3I12	GUIDES, TIGHTENER AND FEEDER CONVEYOR DRIVE CHAIN	110 - 34			
1D2	GASKET, OIL PUMP	24 - 24	H					
1D1	GASKET, OIL PUMP INTAKE.....	24 - 23	4C19	HANDLE, LATCHES, SHOE GRAIN SUPPLY AUGER CLEANOUT DOOR	120 - 38			
1C17	GASKET, REAR OIL SEAL.....	24 - 14	4I15	HANDLES AND SHIELDS, CHAFF SPREADER (DUAL MOTOR).....	125 - 14			
1C24	GASKET, ROCKER ARM COVER	24 - 21	3E9	HANDRAIL AND LADDER, OPERATOR'S PLATFORM	90 - 18			
1D12	GASKET, THERMOSTAT	24 - 34	3B11	HANDRAILS, RADIATOR DOOR, ENGINE ACCESS DOOR	80 - 6			
1C19	GASKET, TIMING GEAR COVER.....	24 - 16	3H1	HARDWARE KIT, CAB	90 - 84			
1D16	GASKET, TURBOCHARGER	24 - 38	3G21	HARDWARE KIT, COMPRESSOR R134A	90 - 80			
1D12	GASKET, WATER MANIFOLD	24 - 34	2E7	HARDWARE, HYDRAULIC PUMP CONNECTING	50 - 78			
1D10	GASKET, WATER PUMP	24 - 32	1J9	HARNESS CONNECTORS, LOWER, 6076 ENGINE	40 - 94			
1D18	GASKETS, EXHAUST MANIFOLD	24 - 40	1J11	HARNESS CONNECTORS, UPPER, 6076 ENGINE	40 - 96			
2G14	GAUGE, ACCUMULATOR PRESSURE	70 - 2	1H1	HARNESS WIRING, MAIN, L.H. CENTER	40 - 38			
1F19	GAUGE, ENGINE TEMPERATURE	40 - 6	1G1	HARNESS, ARMREST WIRING	40 - 12			
3E21	GAUGE, ENGINE TEMPERATURE	90 - 30	1F15	HARNESS, CAB WIRING	40 - 2			
3H7	GEAR BOX, REVERSER.....	110 - 4	1I1	HARNESS, GRAIN TANK DUAL LEVEL MONITOR	40 - 62			
5C15	GEAR CASE, VERTICAL AUGER LOWER	130 - 36	1H17	HARNESS, LOWER, ENGINE, 6076	40 - 54			
1C20	GEAR, CAMSHAFT	24 - 17	1E11	HARNESS, STARTER, WIRING	24 - 58			
2C5	GEAR, FINAL DRIVE.....	50 - 24	1H15	HARNESS, UPPER, ENGINE, 6076	40 - 52			
1D22	GEAR, INJECTION PUMP.....	24 - 44	1G7	HARNESS, WIRING, A/C, HEATER AND AIRSEAT	40 - 18			
1C14	GEAR, OIL PUMP DRIVE	24 - 11	1H3	HARNESS, WIRING, MAIN, L.H. CENTER	40 - 40			
1D2	GEAR, OIL PUMP DRIVE	24 - 24	1H7	HARNESS, WIRING, R.H. MAIN.....	40 - 44			
1C18	GEAR, STARTER.....	24 - 15	1G5	HARNESS, WIRING, STEERING COLUMN.....	40 - 16			
2H5	GEARBOX FITTINGS AND HOSES, OIL COOLER, FEEDER HOUSE.....	70 - 18	1F19	HARVESTRAK	40 - 6			
4E22	GEARBOX, ENGINE TO MODULE DRIVES	121 - 8	3E21	HARVESTRAK	90 - 30			
4E24	GEARBOX, ENGINE TO MODULE DRIVES	121 - 10	1H11	HARVESTRAK MONITOR SYSTEM.....	40 - 48			
4E16	GEARBOX, SHAFT AND COUPLING, MODULE.....	121 - 2	1H11	HARVESTRAK WIRING HARNESS	40 - 48			
4C15	GEARCASE AND SHEAVE, BEATER	120 - 34	1C21	HEAD BOLT KIT	24 - 18			
5B24	GEARCASE AND SHEAVE, CLEAN GRAIN ELEVATOR	130 - 20	1C21	HEAD, CYLINDER	24 - 18			
1B16	GEARCASE COUPLING, ENGINE	20 - 12	5E5	HEADER BELTS	170 - 4			
4F11	GEARCASE MOUNTING, PRIMARY COUNTERSHAFT AND DRIVE SHAFT	121 - 22	4F17	HEADER ELECTROMAGNETIC CLUTCH	121 - 28			
4G1	GEARCASE, DUAL-RANGE CYLINDER DRIVE	121 - 36	2H22	HEADER HEIGHT CONTROL VALVE	70 - 35			
4F5	GEARCASE, ENGINE	121 - 16	5D23	HEADER HEIGHT CONTROL VALVE	160 - 3			
4F9	GEARCASE, ENGINE	121 - 20	5D22	HEADER HEIGHT CONTROL, DIAL-A-MATIC HYDRAULIC LINE AND VALVE BLOCK	160 - 2			
5C25	GEARCASE, HORIZONTAL UNLOADING AUGER DRIVE	130 - 46	5D24	HEADER HEIGHT CONTROL, ELECTRIC HARNESS, DIAL-A-MATIC	160 - 4			
2E7	GEARCASE, HYDROSTATIC DRIVE PUMP,MAIN HYDRAULIC PUMP CONNECTING HARDWARE.....	50 - 78	2H21	HEADER LIFT CYLINDER, HYDRAULIC	70 - 34			
4E20	GEARCASE, MODULE DRIVE, L.H.....	121 - 6	2H17	HEADER LIFT HYDRAULIC LINES AND HOSES	70 - 30			
4E18	GEARCASE, MODULE DRIVE, R.H.	121 - 4	2I14	HEADER LIFT MODULE, SOLENOID CONTROL VALVE	70 - 50			
4F13	GEARCASE, PRIMARY COUNTERSHAFT	121 - 24	1A9	HEADERS.....	10 - 8			
4F15	GEARCASE, PRIMARY COUNTERSHAFT	121 - 26	1D18	HEAT SHIELD, EXHAUST MANIFOLD.....	24 - 40			
2C1	GEARS, DIFFERENTIAL	50 - 20	1G9	HEATER AND AIR CONDITIONER SWITCH.....	40 - 20			
2B22	GEARS, TRANSMISSION INPUT SHAFT	50 - 16	3E20	HEATER AND AIR CONDITIONING DUCTS	90 - 29			
2B24	GEARS, TRANSMISSIONPINION SHAFT	50 - 18	3G10	HEATER HOUSING AND AIR CONDITIONING FILTERS.....	90 - 68			
2B20	GEARSHIFT LEVER AND LINKAGE	50 - 14	3G23	HEATER SYSTEM.....	90 - 82			
3E23	GEARSHIFT LEVER AND LINKAGE	90 - 32	1G7	HEATER WIRING HARNESS	40 - 18			
3E3	GLASS AND DOOR, CAB.....	90 - 12	1B17	HEATER, COOLANT, ENGINE BLOCK	20 - 14			
3F23	GLOVE BOX, ARMREST (R.H.)	90 - 56	3F11	HEIGHT ADJUSTER, CAB SEAT	90 - 44			
4D9	GRAIN LEAK KIT.....	120 - 54						
5C9	GRAIN TANK AND CURTAINS.....	130 - 30						
5C7	GRAIN TANK BASE.....	130 - 28						
5D11	GRAIN TANK CROSS AUGERS.....	130 - 58						
1I1	GRAIN TANK DUAL LEVEL MONITOR HARNESS.....	40 - 62						
5C11	GRAIN TANK EXTENSIONS.....	130 - 32						
5C13	GRAIN TANK EXTENSIONS SUPPORT AND ANGLES	130 - 34						

ALPHABETICAL INDEX - CONTINUED

GRID		PAGE	GRID		PAGE
2B13	HIGH FLOATATION DRIVE WHEELS PLANETARY FINAL DRIVE	50 - 7	4H17	HOUSING AND KNIFEBANK, STRAW CHOPPER	121 - 76
1113	HOLDDOWN, BATTERY	40 - 74	4H19	HOUSING AND KNIFEBANK, STRAW CHOPPER	121 - 78
3G5	HOLDER, CUP	90 - 62	4J21	HOUSING AND PADDLE ASSEMBLY, UPPER TAILINGS AUGER	125 - 46
3C3	HOOD, REAR	80 - 22	4C20	HOUSING AND SHOE GRAIN SUPPLY AUGERS	120 - 40
3C7	HOOD, REAR, ACCESS DOOR AND STOP	80 - 26	4C22	HOUSING AND SHOE GRAIN SUPPLY AUGERS	120 - 42
5D7	HORIZONTAL UNLOADING AUGER (17- AND 20-FT.)	130 - 54	1D24	HOUSING CONNECTORS, FUEL INJECTION PUMP ..	24 - 46
5C25	HORIZONTAL UNLOADING AUGER DRIVE GEARCASE	130 - 46	2B19	HOUSING COVER, TRANSMISSION AND DIFFERENTIAL	50 - 13
5D1	HORIZONTAL UNLOADING AUGER HOUSING (14- AND 17-FT.)	130 - 48	2C4	HOUSING, FINAL DRIVE	50 - 23
5D3	HORIZONTAL UNLOADING AUGER HOUSING (17- AND 20-FT.)	130 - 50	5D1	HOUSING, HORIZONTAL UNLOADING AUGER (14- AND 17-FT.)	130 - 48
5D5	HORIZONTAL UNLOADING AUGER HOUSING (17- AND 20-FT.)	130 - 52	5D3	HOUSING, HORIZONTAL UNLOADING AUGER (17- AND 20-FT.)	130 - 50
5C23	HORIZONTAL UNLOADING AUGER HUB SUPPORT AND SWITCH	130 - 44	5D5	HOUSING, HORIZONTAL UNLOADING AUGER (17- AND 20-FT.)	130 - 52
5C19	HORIZONTAL UNLOADING AUGER SWIVEL	130 - 40	2C12	HOUSING, HYDROSTATIC DRIVE PUMP	50 - 32
3G19	HOSE, A/C COMPRESSOR	90 - 77	1D6	HOUSING, OIL FILTER	24 - 28
2J23	HOSE, CHARGE PRESSURE	70 - 84	1C17	HOUSING, REAR OIL SEAL	24 - 14
2G22	HOSE, HYDRAULIC, VARIABLE DRIVE, FEEDER HOUSE	70 - 10	2F24	HOUSING, SPINDLE, REAR AXLE	60 - 38
4J6	HOSES AND LINES, CHAFF SPREADER (DUAL MOTOR)	125 - 30	2F25	HOUSING, SPINDLE, REAR AXLE GRAIN	60 - 39
2E1	HOSES AND LINES, FOUR WHEEL DRIVE	50 - 72	4J14	HOUSING, TAILINGS ELEVATOR	125 - 38
2D23	HOSES AND LINES, FOUR WHEEL DRIVE HYDRAU LIC, L.H.	50 - 70	1D12	HOUSING, THERMOSTAT, FRONT	24 - 34
2H17	HOSES AND LINES, HEADER LIFT	70 - 30	5C23	HUB SUPPORT AND SWITCH, HORIZONTAL UNLOADING AUGER	130 - 44
2112	HOSES AND LINES, HYDRAULIC, CYLINDER SPEED	70 - 48	1B10	HUB, ENGINE FAN	20 - 6
2H13	HOSES AND LINES, HYDRAULIC, REEL FORE- AND-AFT, FRONT	70 - 26	1E2	HUB, FAN PULLEY	24 - 49
2H9	HOSES AND LINES, HYDRAULIC, REEL PUMP	70 - 22	1C18	HUB, FLYWHEEL	24 - 15
2D21	HOSES AND LINES, OIL COOLER, HYDROSTATIC	50 - 68	2H23	HYDRAULIC FILTER ASSEMBLY, MAIN	70 - 36
2J11	HOSES AND LINES, OIL COOLER, WET CLUTCH	70 - 72	2J21	HYDRAULIC FLAT O-RING KIT	70 - 82
2D13	HOSES AND LINES, OIL, HYDROSTATIC DRIVE, LOWER (TWO WHEEL DRIVE)	50 - 60	2G22	HYDRAULIC HOSE, VARIABLE DRIVE, FEEDER HOUSE	70 - 10
2H7	HOSES AND LINES, REEL DRIVE, HYD., FRONT	70 - 20	2H19	HYDRAULIC HOSES, CONTOUR MASTER (L.H.) (OPTIONAL)	70 - 32
2G16	HOSES AND LINES, REEL DRIVE, HYDRAULIC, L.H. SIDE	70 - 4	2112	HYDRAULIC LINES AND HOSES, CYLINDER SPEED	70 - 48
2H11	HOSES AND LINES, REEL LIFT	70 - 24	2H17	HYDRAULIC LINES AND HOSES, HEADER LIFT	70 - 30
2F3	HOSES AND LINES, STEERING, FRONT	60 - 16	2D23	HYDRAULIC LINES AND HOSES, L.H., FOUR WH EEL DRIVE	50 - 70
2F11	HOSES AND LINES, STEERING, REAR	60 - 24	2H13	HYDRAULIC LINES AND HOSES, REEL FORE-AND-AFT, FRONT	70 - 26
2J3	HOSES AND LINES, UNLOADING AUGER SWING HYDRAULIC CYLINDER	70 - 64	2G16	HYDRAULIC LINES AND HOSES, REEL DRIVE L.H. SIDE	70 - 4
218	HOSES AND LINES, UPPER RETURN, HYDRAULIC RESERVOIR	70 - 44	2H7	HYDRAULIC LINES AND HOSES, REEL DRIVE, FRONT	70 - 20
2J5	HOSES, GRAIN TANK UNLOADING DRIVE CYLINDER	70 - 66	2H9	HYDRAULIC LINES AND HOSES, REEL PUMP	70 - 22
2H19	HOSES, HYDRAULIC, CONTOUR MASTER (L.H.) (OPTIONAL)	70 - 32	2E4	HYDRAULIC LINES, FOUR WHEEL DRIVE CASE DRAIN	50 - 75
4K7	HOSES, LUBE, L. H.	125 - 58	2H15	HYDRAULIC LINES, REEL FORE-AND-AFT, L.H. SIDE	70 - 28
4K5	HOSES, LUBE, R. H.	125 - 56	2J7	HYDRAULIC MOUNTING, UNLOADING AUGER SWING	70 - 68
2D17	HOSES, OIL, HYDROSTATIC DRIVE, LOWER (FOUR WHEEL DRIVE)	50 - 64	2110	HYDRAULIC PRESSURE LINES AND HOSES	70 - 46
2D15	HOSES, OIL, HYDROSTATIC DRIVE, LOWER (TWO WHEEL DRIVE)	50 - 62	2E7	HYDRAULIC PUMP CONNECTING HARDWARE, HYDROSTATIC DRIVE PUMP	50 - 78
2110	HOSES, PRESSURE, HYDRAULIC	70 - 46	2I24	HYDRAULIC PUMP, MAIN	70 - 60
1F7	HOSES, RADIATOR	30 - 14	2I6	HYDRAULIC RETURN LINES	70 - 42
2F5	HOSES, STEERING, UPPER	60 - 18	2F5	HYDRAULIC STEERING HOSES, UPPER AND ATTENUATOR	60 - 18
2J10	HOSES, TILT CYLINDER - CONTOUR MASTER	70 - 71	218	HYDRAULIC UPPER RETURN LINES AND HOSES, RESERVOIR	70 - 44
2D19	HOSES, UPPER, HYDROSTATIC DRIVE (FOUR WHEEL DRIVE)	50 - 66	211	HYDRAULIC/HYDROSTATIC OIL RESERVOIR AND MOUNTINGS	70 - 37
4J4	HOSES, VALVE, PUMP AND LINES, CHAFF SPREADER	125 - 28	2C15	HYDROSTATIC DRIVE CHARGE PUMP	50 - 35
3E19	HOUSING AND AIR FILTER, CAB	90 - 28	2C16	HYDROSTATIC DRIVE CHARGE PUMP (RING AND PINION)	50 - 36

ALPHABETICAL INDEX - CONTINUED

GRID		PAGE	GRID		PAGE
2B10	HYDROSTATIC DRIVE CONTROL CABLE	50 - 4		K	
2C17	HYDROSTATIC DRIVE DISPLACEMENT CONTROL VALVE	50 - 38	1C8	KEY ENGINE SERVICE PARTS.....	24 - 4
2D19	HYDROSTATIC DRIVE HOSES, UPPER (FOUR WHEEL DRIVE)	50 - 66	4H25	KEY STOCK, METRIC KIT	121 - 84
2B8	HYDROSTATIC DRIVE LEVER, CABLE AND SWITC H.....	50 - 2	4K9	KEY STOCK, METRIC KIT	125 - 60
2C19	HYDROSTATIC DRIVE MOTOR.....	50 - 40	1C14	KEY, DAMPER.....	24 - 11
2E5	HYDROSTATIC DRIVE MOTOR.....	50 - 76	4J1	KIT, ADJUSTING SCREW, REEL DRIVE FLOW CONTROL VALVE.....	125 - 25
2C21	HYDROSTATIC DRIVE MOTOR KIT	50 - 42	3F15	KIT, AIR SUSPENSION SEAT	90 - 48
2D17	HYDROSTATIC DRIVE OIL LINES AND HOSES, LOWER (FOUR WHEEL DRIVE)	50 - 64	3F17	KIT, AIR SUSPENSION SEAT	90 - 50
2D13	HYDROSTATIC DRIVE OIL LINES AND HOSES, LOWER (TWO WHEEL DRIVE)	50 - 60	3F19	KIT, AIR SUSPENSION SEAT	90 - 52
2D15	HYDROSTATIC DRIVE OIL LINES AND HOSES, LOWER (TWO WHEEL DRIVE)	50 - 62	3F21	KIT, AIR SUSPENSION SEAT	90 - 54
2C14	HYDROSTATIC DRIVE PISTON.....	50 - 34	3H1	KIT, CAB HARDWARE	90 - 84
2C11	HYDROSTATIC DRIVE PUMP COVER	50 - 30	3G21	KIT, COMPRESSOR HARDWARE R134A	90 - 80
2C9	HYDROSTATIC DRIVE PUMP, FRONT COVER AND SHAFT	50 - 28	1J17	KIT, CONVENIENCE OUTLET	40 - 102
2C12	HYDROSTATIC DRIVE PUMP, HOUSING, SWASHPLATE, AND SERVO CYLINDERS.....	50 - 32	1E7	KIT, CYLINDER HEAD	24 - 54
2C22	HYDROSTATIC MOTOR VALVE	50 - 43	1J1	KIT, ELECTRICAL CONNECTOR SERVICE	40 - 86
2D21	HYDROSTATIC OIL COOLER LINES AND HOSES	50 - 68	1J3	KIT, ELECTRICAL CONNECTOR SERVICE	40 - 88
	I		1C11	KIT, ENGINE OVERHAUL.....	24 - 8
5C1	IDLER AND DRIVE TIGHTENER, CLEAN GRAIN ELEVATOR	130 - 22	1E7	KIT, ENGINE REBUILD.....	24 - 54
1B10	IDLER ARM, ENGINE FAN.....	20 - 6	4D9	KIT, GRAIN LEAK	120 - 54
1E13	IDLER PULLEY, AIR CONDITIONER COMPRESSOR ..	24 - 60	1C21	KIT, HEAD BOLT	24 - 18
3110	IDLER SHAFT, DRUM AND CHAIN, FEEDER CONVEYOR.....	110 - 32	2J21	KIT, HYDRAULIC FLAT O-RING.....	70 - 82
4C11	IDLER, BEATER DRIVE BELT	120 - 30	2C21	KIT, HYDROSTATIC DRIVE MOTOR.....	50 - 42
4C5	IDLER, STRIPPER BEATER DRIVE.....	120 - 24	3I5	KIT, LOCKOUT ADAPTER - CONTOUR MASTER (BELT PU & 4R CORN HEADS)	110 - 26
4C1	INDICATOR, CABLE AND BRACKETS, CONCAVE	120 - 20	4H25	KIT, METRIC KEY STOCK	121 - 84
4C3	INDICATOR, CONCAVE, CORN AND SMALL GRAIN ..	120 - 22	4K9	KIT, METRIC KEY STOCK	125 - 60
4B24	INDICATOR, SPIKE TOOTH.....	120 - 18	1C13	KIT, PISTON/LINER.....	24 - 10
1D22	INJECTION PUMP GEAR	24 - 44	4I25	KIT, SEAL REPAIR, REEL DRIVE FLOW CONTROL VALVE.....	125 - 24
1D22	INJECTION PUMP LUBE LINE.....	24 - 44	2F20	KIT, STEERING CYLINDER	60 - 33
1D22	INJECTION PUMP, ELECTRONIC FUEL.....	24 - 44	1J5	KIT, TERMINAL AND WIRING	40 - 90
1H21	INLET AIR TEMPERATURE SWITCH	40 - 58	1D10	KIT, WATER PUMP SEAL.....	24 - 32
2D1	INNER COVER.....	50 - 48	1C15	KIT,UNDERSIZE CRANKSHAFT (CONNECTING ROD JOURNAL)	24 - 12
2B22	INPUT SHAFT, TRANSMISSION	50 - 16	1E17	KIT,UNDERSIZED MAIN BEARING CRANKSHAFT.....	24 - 64
1C21	INSERTS, VALVE SEAT	24 - 18	4H17	KNIFEBANK AND HOUSING, STRAW CHOPPER	121 - 76
1F19	INSTRUMENT PANEL, CAB POST	40 - 6	4H19	KNIFEBANK AND HOUSING, STRAW CHOPPER	121 - 78
3E21	INSTRUMENT PANEL, CAB POST	90 - 30	4I21	KNOB, CONTROL, CHECK VALVE AND ROD, CHAFF SPREADER	125 - 20
1D14	INTAKE MANIFOLD.....	24 - 36		L	
1D14	INTAKE MANIFOLD GASKET.....	24 - 36	1G22	L H MAIN WIRING HARNESS, L H FRONT	40 - 34
3I22	INTAKE SHIELD.....	110 - 44	1G24	L H MAIN WIRING HARNESS, L H FRONT	40 - 36
1F1	INTAKE TUBES AND AIR CLEANER.....	30 - 8	1H5	L.H. AND R.H. MAIN WIRING HARNESS, REAR	40 - 42
1C21	INTAKE VALVES	24 - 18	3D3	L.H. FRONT CORNER SHEET AND DOOR	80 - 48
1D1	INTAKE, ENGINE OIL PUMP	24 - 23	1H1	L.H. MAIN WIRING HARNESS, L.H. CENTER	40 - 38
1B14	INTERCOOLER	20 - 10	3C22	L.H. SERVICE ACCESS SHIELD	80 - 42
3D23	INTERIOR TRIM PANELS, CAB.....	90 - 8	2F13	L.H. STEERING LINES	60 - 26
4G7	INTERMEDIATE SHAFT MOUNTING, CYLINDER DRIVE, DUAL-RANGE.....	121 - 42	3E9	LADDER AND HANDRAIL, OPERATOR'S PLATFORM	90 - 18
4G9	INTERMEDIATE SHEAVE, CYLINDER DRIVE, DUAL-RANGE	121 - 44	3B23	LADDER AND LANDING, REAR.....	80 - 18
	J		3C1	LADDER LANDING LATCH ARM, REAR.....	80 - 20
1C6	JETS, PISTON COOLING	24 - 2	1K2	LAMP ASSEMBLY, REAR L.H. SIDE	40 - 112
			1K1	LAMP ASSEMBLY, REAR R.H. SIDE.....	40 - 111
			1J13	LAMP, INSTALLATION	40 - 98
			1J25	LAMPS, LICENSE PLATE (EXPORT)	40 - 110
			3B23	LANDING AND LADDER, REAR.....	80 - 18
			3E17	LANDING AND MIRROR, CAB (R.H.)	90 - 26
			3E15	LANDING AND MIRROR, CAB, L.H.	90 - 24
			3C1	LANDING LATCH ARM, REAR LADDER.....	80 - 20
			3I14	LATCH HANDLE, FEED PLATE	110 - 36
			3E1	LATCH, CAB DOOR	90 - 10

