

H39368

-UN-01JAN94



JOHN DEERE 9510 AND SIDEHILL 9510 MAXIMIZER™ COMBINES

*9510 MANUFACTURED (1998-)
SH9500 MANUFACTURED (1998-)*

(SPECIFICATIONS AND DESIGN SUBJECT TO CHANGE WITHOUT NOTICE)

COPYRIGHT (C) 2000. DEERE & COMPANY. MOLINE, ILLINOIS, USA. ALL RIGHT RESERVED.

NOTE

FOR 900 SERIES PLATFORM PARTS INFORMATION, REFER TO JOHN DEERE 900 SERIES PLATFORM PARTS CATALOG - PC-2104.

FOR 40 SERIES CORN HEAD PARTS INFORMATION, REFER TO JOHN DEERE 40 SERIES CORN HEAD PARTS CATALOG - PC-1223.

FOR 50A SERIES ROW-CROP HEAD PARTS INFORMATION, REFER TO JOHN DEERE 50A SERIES ROW-CROP HEAD PARTS CATALOG - PC-1747.

FOR THREE-ROLLER BELT PICKUP PARTS INFORMATION, REFER TO JOHN DEERE THREE-ROLLER BELT PICKUP PARTS CATALOG - PC-2210.

FOR 918 AND 920 DRAPER PARTS INFORMATION, REFER TO JOHN DEERE 918 AND 920 DRAPER PLATFORMS PARTS CATALOG - PC-2212.

FOR 90 SERIES CORN HEAD PARTS INFORMATION, REFER TO JOHN DEERE 90 SERIES CORN HEAD PARTS CATALOG - PC-2404.

IMPORTANT

THIS PARTS CATALOG CONTAINS PARTS INFORMATION FOR THE 9510 AND SIDEHILL 9510 MAXIMIZER COMBINES. VINTAGE IS DETERMINED BY THE COMBINE SERIAL NUMBER OR THE PRODUCT IDENTIFICATION NUMBER (PIN). IT IS IMPORTANT THAT THE CORRECT NUMBERS BE USED WHEN ORDERING PARTS.

PRODUCT INFORMATION NUMBER (PIN) PLATE

THE PRODUCT IDENTIFICATION PLATE (PIN) IS LOCATED NEAR THE RIGHT-HAND SIDE OF THE TOOL BOX.
AN EXAMPLE OF THE TWO-LINES ON THIS PIN PLATE IS:

HO9510X675000
COMBINE

(FIRST LINE)

HO - MANUFACTURING UNIT (HARVESTER WORKS)

9510 - MODEL IDENTIFIER

X - CONFIGURATION CODE/MODEL IDENTIFIER SUFFIX

675000 - SEQUENTIAL NUMBER USED IN SERIAL NO. COLUMN

(SECOND LINE)

COMBINE - TYPE OF PRODUCT

PARTS LISTING INFORMATION

SERIAL NUMBER OR PRODUCT IDENTIFICATION NUMBER (PIN) INFORMATION SHOWS ON WHICH MACHINES PART MAY BE USED; FOR EXAMPLE:

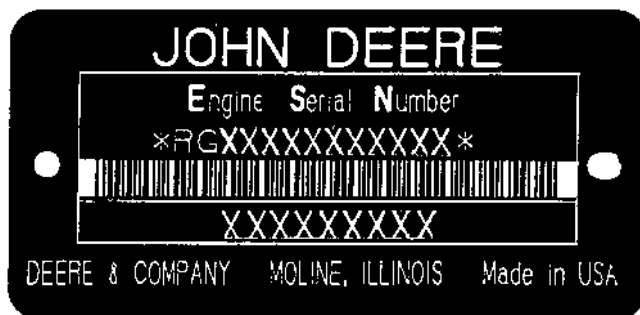
- THE PART CAN BE USED ON ALL MACHINES.
- 000000 THE PART CAN BE USED ON ALL MACHINES UP TO AND INCLUDING THE SERIAL NUMBER LISTED.
- 000000- THE PART CAN BE USED ON ALL MACHINES BEGINNING WITH THE SERIAL NUMBER LISTED.
- 000000-000000 THE PART CAN BE USED ON ALL MACHINES BETWEEN AND INCLUDING SERIAL NUMBERS LISTED.

WHEN XXXXXX'S ARE LISTED IN PLACE OF A SERIAL NUMBER, A SERIAL NUMBER CHANGE WAS MADE, BUT THE EXACT SERIAL NUMBER WAS NOT AVAILABLE WHEN THE CATALOG WAS PRINTED.

SHORT BLOCK SERIAL NUMBER PLATE

(-RGSB076882500)

RGP3513 -UN-01JAN94



RGP3513

THE REPLACEMENT SHORT BLOCK ASSEMBLY HAS A SERIAL NUMBER PLATE ATTACHED. THE ORIGINAL ENGINE SERIAL NUMBER MUST BE STAMPED ONTO THE NEW PLATE IN THE BLANK SPACE PROVIDED, AS A REFERENCE FOR YOUR DEALER. THE PLATE CAN BE ATTACHED WITH (2) 37H44 DRIVE SCREWS.

- | | |
|---------------------------------------|----------------------------|
| 1. DESIGNATES ENGINE MANUFACTURER | RG - WATERLOO ENGINE WORKS |
| 2. DESIGNATES REPLACEMENT SHORT BLOCK | SB |
| 3. DESIGNATES LITERS | XXX- 076 (7.6) |
| 4. DESIGNATES THE PRODUCTION DATE | 8825 |
| 5. DESIGNATES COMPONENT SEQUENCE | 00 |

1A6

9510 AND SH9510 MAXIMIZER™ COMBINES

TWO LINE BAR CODED ENGINE SERIAL NUMBER PLATE

RGP4941 -UN-25JUL97



FIRST LINE

RG - WATERLOO ENGINE WORKS

6

081 (8.1 LITERS)

H - AIR-TO-AIR

H

XXXXXX

SECOND LINE

6081HH001
6081HH002

DEFINES

DESIGNATES ENGINE MANUFACTURER.

DESIGNATES NUMBER OF CYLINDERS.

DESIGNATES LITER DISPLACEMENT.

DESIGNATES TYPE OF AIR INTAKE SYSTEM.

DESIGNATES HARVESTER VEHICLE.

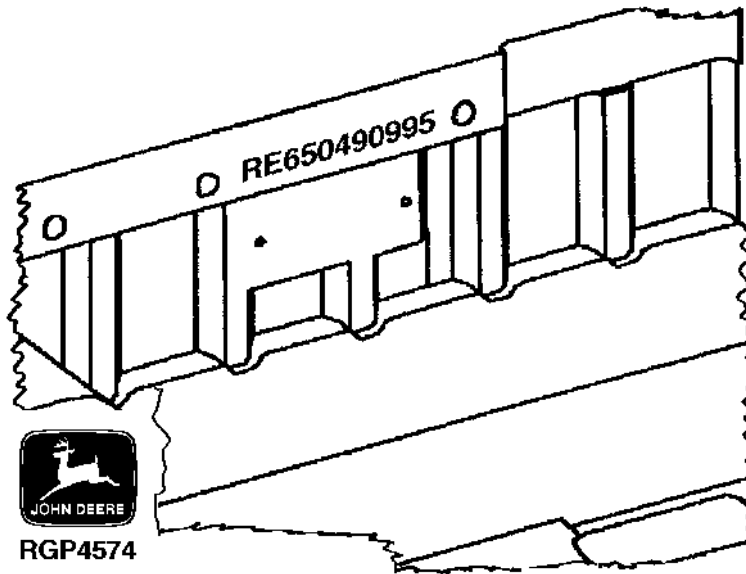
DESIGNATES ENGINE SERIAL NUMBER.

APPLICATION

9510
9510 SIDEHILL

SHORT BLOCK SERIAL NUMBER IDENTIFICATION

RGP4574 -UN-02OCT95



SERIAL NUMBER STAMPED INTO CASTING OF BLOCK NEAR PREVIOUS SERIAL NUMBER PLATE.

EXAMPLE: RE650490995

- | | |
|-----------------------------------|---------|
| 1. DESIGNATES SERVICE PART NUMBER | RE65049 |
| 2. DESIGNATES MONTH ASSEMBLED | 09 |
| 3. DESIGNATES YEAR ASSEMBLED | 95 |

DIRECTION ARROW

ARROWS ARE USED WITH ILLUSTRATIONS TO INDICATE THE FRONT OF THE UNIT. "RIGHT-HAND" AND "LEFT-HAND" SIDES ARE DETERMINED BY FACING IN THE DIRECTION OF MACHINE FORWARD TRAVEL.

BOX-ENCLOSED ILLUSTRATIONS

A KEY NUMBER, SHOWN IN THE PARTS LIST, IS ASSIGNED TO A BOX ENCLOSING ALL PARTS SOLD AS A SERVICE ASSEMBLY. A BOX NOT KEYED INCLUDES NON-CURRENT PARTS.

KITS

KIT INFORMATION WILL BE FOUND IMMEDIATELY FOLLOWING THE STORY IN WHICH IT IS USED. THE ILLUSTRATION IS REPEATED WITH ONLY THE KIT PARTS CALLED OUT AND WITH ALL OTHER PARTS SHOWN IN PHANTOM.

JDM REMANUFACTURED COMPONENTS

THE SERVICE PARTS LISTED IN THIS CATALOG ARE INTENDED FOR THE REPAIR OF ORIGINAL EQUIPMENT COMPONENTS. ALTHOUGH MOST SERVICE PARTS MAY BE USED TO REPAIR REMANUFACTURED COMPONENTS, THE REMANUFACTURED DESIGN MAY CHANGE PARTS SUFFICIENTLY SO THAT SERVICE PARTS ARE INADEQUATE OR NOT USABLE.

BOLT AND CAP SCREW STRENGTH IDENTIFICATION

BOLTS AND CAP SCREWS REQUIRED TO HAVE HIGH-STRENGTH QUALITIES EQUIVALENT TO SAE GRADE 8 ARE IDENTIFIED THROUGHOUT THIS CATALOG BY THE DESCRIPTION HS SAE 8. ALL STANDARD BOLTS AND CAP SCREWS ARE SAE GRADE 5 OR LOWER. BOLTS AND CAP SCREWS REQUIRED TO HAVE HIGH-STRENGTH QUALITIES EQUIVALENT TO PROPERTY CLASS 10.9 ARE IDENTIFIED THROUGHOUT THIS CATALOG BY THE DESCRIPTION 10.9. ALL STANDARD BOLTS AND CAP SCREWS ARE PROPERTY CLASS 8.8 OR LOWER.

SI UNITS OF MEASURE

METRIC DIMENSIONS ARE GIVEN, WHERE APPLICABLE, THROUGHOUT THIS PARTS CATALOG.

TRADEMARKS

THROUGHOUT THIS PARTS CATALOG, YOU WILL FIND THE FOLLOWING DEERE & COMPANY TRADEMARKS:

DIAL-A-SPEED™
DIAL-A-MATIC™
HARVESTRAK™
CONTOUR MASTER™

POSI-TORQ™
TORQ-GARD SUPREME®
QUIK-TATCH™

CHANGE INDICATOR LINE

CHANGES AFFECTING THE ORDERING OF PARTS ARE IDENTIFIED BY VERTICAL LINES MARKED IN THE LEFT-HAND MARGIN OF REVISED PARTS LISTING IMAGES. A LINE IS ALSO AT THE LEFT-HAND EDGE OF THE SAME PART NUMBER IN THE NUMERICAL INDEX TO SHOW THE LOCATION OF REVISED INFORMATION.

FUNCTION CODE

(EXAMPLE - FC: 5000)

FUNCTION CODES ARE LOCATED ON EACH PAGE IN THE UPPER RIGHT-HAND CORNER IN THE BOX. THE CODE LISTED IS A GROUPING CODE THAT CAN BE USED FOR WARRANTIES AND FOR DTAC TO IDENTIFY CERTAIN AREAS.

COMPLETE GOODS LISTINGS

COMPLETE GOODS ARE IN BOLD FACE TYPE. ORDER SEPARATELY. DO NOT INCLUDE ON REPLACEMENT PARTS ORDER.

FOR INDIVIDUAL HEADER PARTS CATALOGS REFER TO:

PC-2104 - PARTS CATALOG FOR JOHN DEERE 900 SERIES PLATFORMS

PC-2210 - PARTS CATALOG FOR JOHN DEERE THREE ROLLER BELT PICK-UP

PC-2212 - PARTS CATALOG FOR JOHN DEERE 918 AND 920 DRAPER PLATFORMS

PC-1747 - PARTS CATALOG FOR JOHN DEERE 50A SERIES ROW-CROP HEADS

PC-1223 - PARTS CATALOG FOR JOHN DEERE 40 SERIES CORN HEADS

PC-2404 - PARTS CATALOG FOR JOHN DEERE 90 SERIES CORN HEADS

SECTION INDEX

SECTION 10 - GENERAL INFORMATION

SECTION 20 - ENGINE FAN, INTERCOOLER AND SCREENS

SECTION 24 - ENGINE

SECTION 30 - FUEL AND AIR

SECTION 40 - ELECTRICAL

SECTION 50 - POWER TRAIN

SECTION 60 - STEERING AND BRAKES

SECTION 70 - HYDRAULICS

SECTION 80 - SEPARATOR SHELL

SECTION 90 - OPERATOR'S STATION

SECTION 110 - FEEDER HOUSE

SECTION 120 - THRESHING AND SEPARATION

SECTION 121 - DRIVES

SECTION 125 - RESIDUE DISPOSAL

SECTION 130 - CLEAN GRAIN ELEVATOR, GRAIN TANK AND UNLOADING AUGER

SECTION 160 - DIAL-A-MATIC HEADER HEIGHT CONTROL

SECTION 170 - DECALS, BELTS AND CHAINS

SECTION 180 - NUMERICAL INDEX

ALPHABETICAL INDEX

GRID	A	PAGE	GRID	PAGE	
4G11	A/C COMPRESSOR COVER R134A	90 - 78	4F9	AIR SUSPENSION KITS, SEAT	90 - 50
4G10	A/C COMPRESSOR HOSE	90 - 77	4F11	AIR SUSPENSION KITS, SEAT	90 - 52
4G11	A/C COMPRESSOR PULLEY R134A	90 - 78	4F13	AIR SUSPENSION KITS, SEAT	90 - 54
4G9	A/C COMPRESSOR R134A	90 - 76	4F5	AIR SUSPENSION, SEAT	90 - 46
4G13	A/C COMPRESSOR SEAL KIT R134A	90 - 80	2D23	AIR TEMPERATURE SWITCH, INLET	40 - 57
4G9	A/C COMPRESSOR MANIFOLD	90 - 76	2D18	ALTERNATOR	40 - 52
1E22	ACCESS COVER FUEL INJECTION PUMP	24 - 68	1E22	ALTERNATOR ADJUSTING STRAP	24 - 68
4B16	ACCESS DOOR, ENGINE, HANDRAILS AND RADIATOR DOOR	80 - 8	1E22	ALTERNATOR BRACKET	24 - 68
4C18	ACCESS SHIELD, L.H., SERVICE	80 - 36	2E9	ALTERNATOR FAN	40 - 68
4C16	ACCESS SHIELD, R.H., SERVICE	80 - 34	2E11	ALTERNATOR MOUNTING	40 - 70
3H3	ACCUMULATOR AND MOUNTING, ONE GALLON	70 - 48	1E22	ALTERNATOR SUPPORT	24 - 68
3H1	ACCUMULATOR AND MOUNTING, ONE-HALF GALLON (SINGLE)	70 - 46	2E8	ALTERNATOR, SHEAVE AND BELT - BOSCH	40 - 67
3F12	ACCUMULATOR PRESSURE GAUGE AND WIRING HARNESS	70 - 2	2C17	ANTENNA, SPEAKERS AND RADIO	40 - 30
1F9	ADAPTER, COLD WEATHER STARTING AID	30 - 9	5F21	ARM, LOCKOUT, DUAL-RANGE	121 - 30
1B16	ADAPTER, ENGINE FAN DRIVE	20 - 8	3B21	ARM, STEERING	51 - 12
1D12	ADAPTER, OIL COOLER	24 - 28	4F19	ARMREST (L.H.)	90 - 60
1D11	ADAPTER, OIL COOLER BYPASS	24 - 27	4F17	ARMREST ADJUSTING MECHANISM	90 - 58
2G19	ADAPTER, TRANSMISSION	50 - 11	2C1	ARMREST CONTROL PANEL	40 - 14
2D3	ADAPTER, WIRING HARNESS (CONTOUR MASTER)	40 - 36	2B23	ARMREST WIRING HARNESS	40 - 12
2D5	ADAPTER, WIRING HARNESS (CONTOUR MASTER)	40 - 38	4F15	ARMREST WITH GLOVEBOX, R.H.	90 - 56
2B23	ADAPTER HARNESS, DIAL-A-MATIC	40 - 12	5D19	ARMS, FRAME, PRECLEANER CHAFFER	120 - 60
1D6	ADHESIVE,ROCKER ARM COVER GASKET	24 - 21	1D5	ARMS, ROCKER	24 - 20
4F1	ADJUST FORE-AND-AFT, SEAT	90 - 42	6B15	ARMS, TAILBOARD - CHOP-TO-BALE	125 - 5A
3E19	ADJUSTABLE REAR AXLE	60 - 39	2C1	ASHTRAY	40 - 14
3E20	ADJUSTABLE REAR AXLE	60 - 40	1E19	ASSEMBLY, CLUTCH (STARTER)	24 - 64
3E24	ADJUSTABLE REAR AXLE SPINDLE HOUSING	60 - 45	3H23	ASSEMBLY, SIX STACK SOLENOID CONTROL VALVE	70 - 72
5G5	ADJUSTING BRACKET, CYLINDER DRIVE, DUAL-RANGE	121 - 38	3D21	ATTENUATOR, STEERING	60 - 16
4F17	ADJUSTING MECHANISM, ARMREST	90 - 58	6F13	AUGER AND CHARGE HOUSING, VERTICAL UNLOADING	130 - 36
2E13	ADJUSTING MOTOR, CONCAVE	40 - 72	6H5	AUGER BELTS	170 - 2
2E7	ADJUSTING MOTOR, SEPARATOR FAN DRIVE	40 - 66	6D9	AUGER CHAIN TIGHTENER, LOWER TAILINGS	125 - 44
6C14	ADJUSTING SCREW KIT, REEL DRIVE FLOW CONTROL VALVE	125 - 25	5C24	AUGER CLEANOUT DOOR, SHOE GRAIN SUPPLY, HANDLES AND LATCHES	120 - 40
1F10	AIR CLEANER AND INTAKE TUBES	30 - 10	6G13	AUGER COUNTERSHAFT DRIVE, UNLOADING	130 - 60
2C10	AIR CONDITIONER AND HEATER SWITCH	40 - 23	6G11	AUGER COVERS AND CHANNEL, CROSS	130 - 58
1E18	AIR CONDITIONER COMPRESSOR FAN PULLEY	24 - 63	6G15	AUGER DRIVE BELT GUIDE, UNLOADING	130 - 62
1E18	AIR CONDITIONER COMPRESSOR IDLER PULLEY	24 - 63	6D15	AUGER DRIVE SHIELD, UPPER TAILINGS	125 - 52
1E18	AIR CONDITIONER COMPRESSOR SUPPORT	24 - 63	4C11	AUGER DRIVE SHIELDS (R.H.)	80 - 28
2C5	AIR CONDITIONER WIRING HARNESS	40 - 18	6D10	AUGER DRIVE TIGHTENER, LOWER TAILINGS	125 - 46
4E12	AIR CONDITIONING AND HEATER DUCTS	90 - 29	6D15	AUGER DRIVE, UPPER TAILINGS	125 - 52
3I15	AIR CONDITIONING CONDENSER AND OIL COOLER	70 - 88	6D12	AUGER HOUSING AND PADDLE ASSEMBLY, UPPER TAILINGS	125 - 48
4G5	AIR CONDITIONING SYSTEM	90 - 72	6F21	AUGER HOUSING, HORIZONTAL UNLOADING (14- AND 17-FT.)	130 - 44
4G7	AIR CONDITIONING SYSTEM, COMPRESSOR R134A	90 - 74	6F22	AUGER HOUSING, HORIZONTAL UNLOADING (14- AND 17-FT.)	130 - 45
4G3	AIR CONDITIONING/HEATER AND PRESSURIZING FAN	90 - 70	6E14	AUGER HOUSING, LOADING, UPPER CLEAN GRAIN	130 - 12
4G1	AIR CONDITIONING/HEATER HOUSING AND FILTERS	90 - 68	6E16	AUGER HOUSING, LOADING, UPPER CLEAN GRAIN	130 - 14
1B12	AIR DUCT, ROTARY SCREEN	20 - 4	6F19	AUGER HUB SUPPORT AND SWITCH, HORIZONTAL UNLOADING	130 - 42
4E11	AIR FILTER AND HOUSING, CAB	90 - 28	2E5	AUGER LIGHT, UNLOADING AND GRAIN TANK DUAL LEVEL MONITOR HARNESS	40 - 64
2D22	AIR FILTER WARNING SWITCH, ENGINE PLUGGED	40 - 56	6G18	AUGER LOWER LUBE BANK, UNLOADING	130 - 66
4F5	AIR SEAT SUSPENSION	90 - 46	2D13	AUGER SENSOR AND WIRING HARNESS, UNLOADING	40 - 46
4F7	AIR SEAT SUSPENSION KITS	90 - 48	6F17	AUGER SWIVEL SUPPORT AND BRACES	130 - 40
4F9	AIR SEAT SUSPENSION KITS	90 - 50	6F15	AUGER SWIVEL, HORIZONTAL UNLOADING	130 - 38
4F11	AIR SEAT SUSPENSION KITS	90 - 52	6E14	AUGER TRANSITION HOUSING	130 - 12
4F13	AIR SEAT SUSPENSION KITS	90 - 54	6D3	AUGER TROUGH, LOWER TAILINGS	125 - 38
2C5	AIR SEAT WIRING HARNESS	40 - 18	6G20	AUGER UPPER LUBE BANK, UNLOADING	130 - 68
4F7	AIR SUSPENSION KITS, SEAT	90 - 48	2D13	AUGER WIRING HARNESS, UNLOADING	40 - 46
			6G3	AUGER, HORIZONTAL UNLOADING (14- AND 17-FT.)	130 - 50

ALPHABETICAL INDEX - CONTINUED

GRID		PAGE	GRID		PAGE
6G5	AUGER, HORIZONTAL UNLOADING (17 FT. AND 20 FT.).....	130 - 52	3B11	BEARINGS, SEALS, SHAFT AND OUTER COVER CAM LOBE MOTOR	51 - 2
6G12	AUGER, HORIZONTAL UNLOADING, DRIVE GEARCASE	130 - 59	6H8	BEATER BELTS SHEAVES	170 - 5
6E18	AUGER, LOADING, CLEAN GRAIN	130 - 16	5C23	BEATER COVER	120 - 38
6E20	AUGER, LOADING, CLEAN GRAIN FOLD	130 - 18	5G15	BEATER DRIVE SHEAVES AND TIGHTENER	121 - 48
6H6	AUGER, LOWER TAILINGS, BELTS	170 - 3	5C5	BEATER GRATE AND CONCAVE ASSEMBLY.....	120 - 21A
6D1	AUGER, SHAFT AND TIGHTENER, LOWER TAILINGS	125 - 36	5B24	BEATER GRATE CURTAIN	120 - 16
6D15	AUGER, UPPER TAILINGS.....	125 - 52	5C21	BEATER SHAFT AND DRIVE BELT.....	120 - 36
6F11	AUGER, VERTICAL, LOWER GEAR CASE.....	130 - 34	1B14	BELT ,ENGINE FAN	20 - 6
6G9	AUGERS, GRAIN TANK CROSS	130 - 56	5H1	BELT PICKUP / REEL DRIVE, PUMP MOUNTING SHEAVE	121 - 58
5D1	AUGERS, SHOE GRAIN SUPPLY AND HOUSING.....	120 - 42	1E22	BELT TENSIONER (ALT.)	24 - 68
5D3	AUGERS, SHOE GRAIN SUPPLY AND HOUSING.....	120 - 44	2E8	BELT, ALTERNATOR	40 - 67
2B15	AUX FIELD LIGHTS SWITCH, OPTIONAL	40 - 4	5C21	BELT, DRIVE, SHAFT AND BEATER.....	120 - 36
2B21	AUXILIARY FIELD LIGHTING	40 - 10	1B16	BELT, ENGINE FAN DRIVE	20 - 8
2G20	AXLE SPACERS (RING AND PINION FINAL DRIVE)	50 - 12	4H23	BELT, FAN, DUST, LH FEEDER HOUSE	110 - 30
3E21	AXLE SPINDLES, REAR (FIXED AND ADJUSTABLE REAR AXLE).....	60 - 42	4E23	BELT, OPERATOR'S SEAT	90 - 40
2H20	AXLE, FINAL DRIVE (RING AND PINION)	50 - 40	1B10	BELT, ROTARY SCREEN	20 - 2
3E18	AXLE, FIXED REAR	60 - 38	4E24	BELT, SEAT - TRAINING SEAT	90 - 41
2G18	AXLE, FRONT (RING AND PINION FINAL DRIVE)	50 - 10	6H6	BELTS, AIR CONDITIONER COMPRESSOR	170 - 3
2G19	AXLE, FRONT (SIDEHILL) (RING AND PINION FINAL DRIVE)	50 - 11	6H5	BELTS, AUGER	170 - 2
2H21	AXLE, GEAR AND BEARINGS, FINAL DRIVE (RING AND PINION) (SIDEHILL)	50 - 41	6H8	BELTS, BEATER	170 - 5
3E19	AXLE, REAR, ADJUSTABLE.....	60 - 39	6H6	BELTS, CLEAN GRAIN ELEVATOR.....	170 - 3
3E20	AXLE, REAR, ADJUSTABLE.....	60 - 40	6H5	BELTS, CONVEYOR FEEDER	170 - 2
3E17	AXLE, REAR, SUPPORT.....	60 - 36	6H6	BELTS, COOLING FAN.....	170 - 3
			6H6	BELTS, CYLINDER DRIVE	170 - 3
			6H6	BELTS, DRIVE, CYLINDER INTERMEDIATE	170 - 3
			6H5	BELTS, ENGINE DRIVE	170 - 2
			6H7	BELTS, FAN, CLEANING	170 - 4
			6H5	BELTS, FEEDER CONVEYOR	170 - 2
			6H7	BELTS, FEEDER HOUSE	170 - 4
			6H7	BELTS, HEADER AND REEL	170 - 4
			6H8	BELTS, LOWER TAILINGS AUGER.....	170 - 5
			6H6	BELTS, LOWER TAILINGS AUGER	170 - 3
			6H6	BELTS, ROTARY SCREEN.....	170 - 3
			6H7	BELTS, STRAW CHOPPER	170 - 4
			6H7	BELTS, STRAW SPREADER	170 - 4
			6H7	BELTS, UNLOADING AUGERS	170 - 4
			6H8	BELTS, UNLOADING SYSTEM.....	170 - 5
			6H8	BELTS, UPPER TAILINGS AUGER	170 - 5
			6H5	BELTS, WALKER	170 - 2
			3H17	BI-DIRECTIONAL MODULE, SOLENOID CONTROL VALVE, REEL LIFT AND CYLINDER SPEED	70 - 64
			2C11	BLADE, WIPER (LONG)	40 - 24
			3J13	BLOCK SOLENOID, MAIN VALVE	70 - 112
			1C16	BLOCK, SHORT.....	24 - 6
			1D3	BOLTS, CYLINDER HEAD	24 - 18
			2E9	BOSCH ALTERNATOR AND VOLTAGE REGULATOR (95 AMP)	40 - 68
			2E8	BOSCH ALTERNATOR, SHEAVE AND BELT	40 - 67
			4E5	BOX, TOOL	90 - 22
			6F17	BRACES AND AUGER SWIVEL SUPPORT	130 - 40
			1E22	BRACKET, ALTERNATOR	24 - 68
			3D18	BRACKET, BRAKE CABLE SUPPORT	60 - 13
			4J5	BRACKET, FEEDER CONVEYOR	111 - 24
			2E23	BRACKET, REEL SPEED MOTOR.....	40 - 82
			2D7	BRACKET, STRAW CHOPPER SENSOR	40 - 40
			6D8	BRACKET, TAILINGS DRIVE AND LOWER TROUGH SUPPORT	125 - 43
			6B15	BRACKETS, CHOP-TO-BALE	125 - 5A
			5C17	BRACKETS, INDICATOR AND CABLES, CONCAVE	120 - 32
			4I3	BRACKETS, LEVELING CABLES AND SHEAVES SIDEHILL	110 - 34
			2D15	BRACKETS, LOW SHAFT SPEED SENSORS	40 - 48
			3H22	BRACKETS, SOLENOID CONTROL VALVE	70 - 70
			3D18	BRAKE CABLE SUPPORT BRACKET	60 - 13

ALPHABETICAL INDEX - CONTINUED

GRID		PAGE	GRID		PAGE
3D11	BRAKE LINES, MASTER CYLINDER AND RESERVOIR	60 - 6	6C1	CHAFF SPREADER (DUAL MOTOR) SHIELDS AND HANDLES	125 - 12
3D13	BRAKE MASTER CYLINDER	60 - 8	6C9	CHAFF SPREADER CONTROL, CHECK VALVE, ROD AND KNOB	125 - 20
3D7	BRAKE PEDAL AND FRAME, PARKING	60 - 2	6B23	CHAFF SPREADER DISC (DUAL MOTOR)	125 - 10
3D9	BRAKE PEDALS AND MASTER CYLINDERS	60 - 4	6C15	CHAFF SPREADER LINES AND FITTINGS	125 - 26
3D15	BRAKE SHOES AND DRUM	60 - 10	6C17	CHAFF SPREADER LINES, HOSES, VALVE AND PUMP	125 - 28
3D17	BRAKE SLAVE CYLINDER	60 - 12	3F18	CHAFF SPREADER MOTOR (EATON)	70 - 10
2E15	BREAKERS, CIRCUIT, ENGINE COMPARTMENT	40 - 74	6C5	CHAFF SPREADER MOUNTING SUPPORT	125 - 16
1C13	BUSHING, CAMSHAFT	24 - 2	6C7	CHAFF SPREADER MOUNTING SUPPORT (SIDEHILL)	125 - 18
1D2	BUSHING, CAMSHAFT	24 - 17	6C21	CHAFF SPREADER PUMP	125 - 32
3D23	BUTTON, EITHER AID START	60 - 18	5D21	CHAFFER ELEMENT	120 - 62
4F22	BUTTON, EITHER AID START	90 - 64	5D23	CHAFFER EXTENSION ELEMENT	120 - 64
3D23	BUTTON, HORN	60 - 18	5E1	CHAFFER FRAME	120 - 66
4F22	BUTTON, HORN	90 - 64	5D19	CHAFFER FRAME ARMS, PRECLEANER	120 - 60
1D11	BYPASS TUBES, OIL COOLER	24 - 27	5D15	CHAFFER FRAME, PRE-CLEANER	120 - 56
1D13	BYPASS VALVE, OIL FILTER	24 - 30	5D13	CHAFFER, PRECLEANING	120 - 54
C					
4E11	CAB AIR FILTER AND HOUSING	90 - 28	4J23	CHAIN IDLERS AND SHIELD BRACKETS, DRIVE (SIDEHILL)	111 - 42
2B12	CAB DOME LIGHT	40 - 1	6D9	CHAIN TIGHTENER, LOWER TAILINGS AUGER	125 - 44
4D18	CAB DOOR LATCH	90 - 10	6D14	CHAIN TIGHTENER, UPPER TAILINGS DRIVE	125 - 50
4D22	CAB FRAME AND SUPPORT	90 - 14	6E6	CHAIN, CONVEYOR AND LOWER ELEVATOR, CLEAN GRAIN	130 - 4
4D20	CAB GLASS AND DOOR	90 - 12	6E8	CHAIN, CONVEYOR AND LOWER ELEVATOR, CLEAN GRAIN	130 - 6
4G16	CAB HARDWARE KIT	90 - 84	4J5	CHAIN, FEEDER CONVEYOR DRIVE	111 - 24
4D16	CAB INTERIOR TRIM PANELS	90 - 8	4J7	CHAIN, IDLER SHAFT AND DRUM, FEEDER CONVEYOR, SIDEHILL	111 - 26
4E7	CAB L.H. LANDING AND MIRROR	90 - 24	6D7	CHAIN, TAILINGS ELEVATOR CONVEYOR, SPROCKETS, BEARINGS	125 - 42
4E9	CAB LANDING AND MIRROR, R.H.	90 - 26	6G11	CHANNEL AND COVERS, CROSS AUGER	130 - 58
2B12	CAB LIGHT, DOME	40 - 1	1B22	CHANNEL, RADIATOR MOUNTING	20 - 14
4E21	CAB OPERATOR'S SEAT AND BACKREST	90 - 38	6F13	CHARGE HOUSING AND VERTICAL UNLOADING AUGER	130 - 36
4D10	CAB PANELS AND FLOOR MAT	90 - 2	3I24	CHARGE PRESSURE HOSE	70 - 98
2B17	CAB POST INSTRUMENT PANEL	40 - 6	3J1	CHARGE PRESSURE HOSE (SIDEHILL)	70 - 100
4E13	CAB POST INSTRUMENT PANEL	90 - 30	2I7	CHARGE PUMP, HYDROSTATIC DRIVE (RING AND PINION)	50 - 53
4D14	CAB REAR AND SIDE SEALS	90 - 6	6C9	CHECK VALVE, ROD, KNOB AND CONTROL CHAFF SPREADER	125 - 20
4D24	CAB ROOF AND SUPPORTS	90 - 16	6B17	CHOP-TO-DROP DECLUTCHING LEVER	125 - 5C
2B19	CAB ROOF LIGHTS	40 - 8	6B18	CHOPPER COVER AND BRACKETS - CHOP-TO-BALE	125 - 5D
4F3	CAB SEAT HEIGHT ADJUSTER (VERTICAL CONTROL)	90 - 44	6B13	CHOPPER DOOR, STRAW	125 - 4
4D12	CAB SOUND DEADENING, FOAM AND SEALS	90 - 4	6F11	CHUTE, GRAIN TANK CLEAN OUT	130 - 34
2B13	CAB WIRING HARNESS	40 - 2	2B17	CIRCUIT BOARD, CAB POST INSTRUMENT PANEL	40 - 6
2G10	CABLE, HYDROSTATIC CONTROL LEVER	50 - 2	4E13	CIRCUIT BOARD, CAB POST INSTRUMENT PANEL	90 - 30
2E14	CABLES, BATTERY	40 - 73	2B15	CIRCUIT BOARD, OVERHEAD CONSOLE PANEL	40 - 4
5C17	CABLES, BRACKETS AND INDICATOR, CONCAVE	120 - 32	2E21	CIRCUIT BOARDS AND CENTRAL ELECTRONICS MODULE	40 - 80
2G12	CABLES, HYDROSTATIC DRIVE CONTROL	50 - 4	2E15	CIRCUIT BREAKERS, ENGINE COMPARTMENT	40 - 74
3B10	CAM LOBE MOTOR	51 - 1	1B24	CLAMPS, INTERCOOLER HOSES	20 - 16
3B17	CAM, CARRIER AND PISTONS	51 - 8	6E23	CLEAN GRAIN ELEVATOR DRIVE TIGHTENER AND IDLER	130 - 22
2H5	CAM, TRANS/DIFFERENTIAL SHIFTER	50 - 24	6E21	CLEAN GRAIN ELEVATOR GEARCASE AND SHEAVE	130 - 20
1D2	CAMSHAFT	24 - 17	6E12	CLEAN GRAIN ELEVATOR SHAFT, UPPER, SPROCKET AND SHEAVE	130 - 10
1C13	CAMSHAFT BUSHING	24 - 2	6F1	CLEAN GRAIN ELEVATOR SHIELDS, UPPER	130 - 24
1D2	CAMSHAFT BUSHING	24 - 17	6E10	CLEAN GRAIN ELEVATOR, UPPER	130 - 8
1D2	CAMSHAFT FOLLOWER	24 - 17	6E18	CLEAN GRAIN LOADING AUGER	130 - 16
1D5	CAMSHAFT FOLLOWER	24 - 20	6E20	CLEAN GRAIN LOADING AUGER, FOLD	130 - 18
1D2	CAMSHAFT GEAR	24 - 17			
6F11	CAP, GRAIN TANK CLEAN OUT CHUTE	130 - 34			
2E9	CAPACITOR, ALTERNATOR	40 - 68			
1C13	CAPS, MAIN BEARING	24 - 2			
3B19	CAPS, YOKE AND PIVOTS	51 - 10			
3B17	CARRIER, PISTONS AND CAM	51 - 8			
3C17	CASE DRAIN HYDRAULIC LINES, 4-WHEEL DRIVE	51 - 32			
2E21	CENTRAL ELECTRONICS MODULE AND CIRCUIT BOARDS	40 - 80			
6C19	CHAFF SPREADER (DUAL MOTOR) HOSES AND LINES	125 - 30			
6C3	CHAFF SPREADER (DUAL MOTOR) PAN, WINGS AND SEALS	125 - 14			

ALPHABETICAL INDEX - CONTINUED

GRID		PAGE	GRID		PAGE
6E4	CLEAN GRAIN LOWER AUGER AND HINGED DOOR	130 - 2	4H5	CONTOUR MASTER, FEEDER HOUSE SHELL, WEAR PLATES AND SEALS	110 - 12
6E6	CLEAN GRAIN LOWER ELEVATOR AND CONVEYOR CHAIN	130 - 4	4H9	CONTOUR MASTER, LOCKOUT ASSEMBLY (OPTIONAL).....	110 - 16
6E8	CLEAN GRAIN LOWER ELEVATOR AND CONVEYOR CHAIN	130 - 6	2F9	CONTROL BOX, LEVEL SENSING	40 - 92
6F11	CLEAN OUT CHUTE, GRAIN TANK	130 - 34	2G12	CONTROL CABLES, HYDROSTATIC DRIVE	50 - 4
1F10	CLEANER, AIR AND INTAKE TUBES	30 - 10	2C1	CONTROL PANEL, ARMREST	40 - 14
5G17	CLEANING FAN DRIVE, SEPARATOR	121 - 50	1E4	CONTROL UNIT, ELECTRONIC	24 - 48
5D11	CLEANING FAN INTAKE SHIELDS	120 - 52	3B23	CONTROL VALVE (4WD)	51 - 14
5D5	CLEANING FAN LEAF SCREENS (CORN)	120 - 46	6C14	CONTROL VALVE ADJUSTING SCREW KIT, REEL DRIVE FLOW	125 - 25
5D7	CLEANING FANS AND SHROUDS	120 - 48	3H23	CONTROL VALVE MODULE, SIX STACK SOLENOID ASSEMBLY & MOUNTINGS	70 - 72
5D9	CLEANING FANS AND SHROUDS	120 - 50	3B24	CONTROL VALVE SOLENOID	51 - 15
2F19	CLEANING SHOE LAMP.....	40 - 102	6C11	CONTROL VALVE, FLOW, REEL DRIVE	125 - 22
4H7	CLOSURE PLATES, FEEDER HOUSE - CONTOUR MASTER	110 - 14	2I9	CONTROL VALVE, HYDROSTATIC DRIVE DISPLACEMENT (RING AND PINION)	50 - 56
1E19	CLUTCH ASSEMBLY(STARTER)	24 - 64	3F16	CONTROL VALVE, REEL DRIVE FLOW	70 - 6
5F11	CLUTCH, HEADER ELECTROMAGNETIC.....	121 - 20	6C13	CONTROL VALVE, REEL DRIVE FLOW, SEAL REPAIR KIT.....	125 - 24
4I24	CLUTCH, SLIP, FEEDER HOUSE	111 - 18	3I21	CONTROL VALVE, SOLENOID, ENGINE GEARCASE PRESSURE REGULATOR	70 - 94
1F9	COLD WEATHER STARTING AID	30 - 9	3H19	CONTROL VALVE, SOLENOID, FOR AUGER SWING..	70 - 67
3E1	COLUMN, STEERING, LOWER	60 - 20	6C9	CONTROL, CHECK VALVE, ROD AND KNOB, CHAFF SPREADER	125 - 20
3D23	COLUMN, STEERING, UPPER.....	60 - 18	2F1	CONVENIENCE OUTLET	40 - 84
4F22	COLUMN, STEERING, UPPER.....	90 - 64	3G5	CONVERSION PARTS, HYDRAULIC, 200 SERIES CUTTING PLATFORM.....	70 - 23
4B22	COMPARTMENT, ENGINE	80 - 14	6H5	CONVEYOR AUGER BELTS,	170 - 2
4G12	COMPRESSOR HARDWARE KIT R134A	90 - 79	5G13	CONVEYOR AUGERS, STRAW WALKER, SIEVE AND CHAFFER DRIVE	121 - 46
4G10	COMPRESSOR, A/C, HOSE	90 - 77	6E6	CONVEYOR CHAIN AND LOWER ELEVATOR, CLEAN GRAIN.....	130 - 4
6H6	COMPRESSOR, AIR CONDITIONING BELTS.....	170 - 3	6E8	CONVEYOR CHAIN AND LOWER ELEVATOR, CLEAN GRAIN.....	130 - 6
4G7	COMPRESSOR, AIR CONDITIONING SYSTEM R134A	90 - 74	4H11	CONVEYOR CHAIN RETURN FLOOR- SIDEHILL FEEDER HOUSE	110 - 18
4G9	COMPRESSOR, AIR CONDITIONING, R134A	90 - 76	6D7	CONVEYOR CHAIN, SPROCKETS AND BEARINGS, TAILINGS ELEVATOR.....	125 - 42
2E13	CONCAVE ADJUSTING MOTOR	40 - 72	1C4	COOLANT HEATER, ENGINE BLOCK.....	20 - 22
5C5	CONCAVE ASSEMBLY AND BEATER GRATE.....	120 - 21A	1B20	COOLANT RECOVERY TANK	20 - 12
5C15	CONCAVE INDICATOR.....	120 - 30	1D12	COOLER, ENGINE OIL	24 - 28
5C17	CONCAVE INDICATOR, CABLE AND BRACKETS.....	120 - 32	1F8	COOLER, FUEL	30 - 8
5C1	CONCAVE, RASP BAR AND GRATE	120 - 18	3F23	COOLER, OIL, FEEDER HOUSE	70 - 16
5C3	CONCAVE, RASP BAR AND GRATE	120 - 20	3G1	COOLER, OIL, FEEDER HOUSE GEARCASE	70 - 18
5C11	CONCAVE, SPIKE TOOTH.....	120 - 26	6H6	COOLING FAN BELTS	170 - 3
5C9	CONCAVE, SPIKE-TOOTH	120 - 24	6B11	CORN CURTAIN AND DEFLECTORS	125 - 2
3I15	CONDENSER, AIR CONDITIONING AND OIL COOLER	70 - 88	5B18	CORN CYLINDER DOOR (ARGENTINA ONLY).....	120 - 10
1C20	CONNECTING RODS	24 - 10	4C24	CORNER SHEET, DOOR, FRONT, (L.H.)	80 - 42
2B23	CONNECTOR, HYDRO HANDLE	40 - 12	4C20	CORNER SHEET, R H FRONT	80 - 38
2F24	CONNECTORS AND TERMINALS, WEATHERPACK ...	40 - 108	4C22	CORNER SHEET, REAR, L H	80 - 40
2B13	CONNECTORS, CAB.....	40 - 2	5G7	COUNTERSHAFT DRIVE, SECONDARY.....	121 - 40
1E11	CONNECTORS, ELECTRICAL, WEATHERPACK	24 - 56	6G13	COUNTERSHAFT DRIVE, UNLOADING AUGER	130 - 60
2D24	CONNECTORS, ETHER START.....	40 - 58	5F7	COUNTERSHAFT GEARCASE, PRIMARY	121 - 16
1E6	CONNECTORS, FUEL INJECTION PUMP HOUSING ..	24 - 50	5F9	COUNTERSHAFT GEARCASE, PRIMARY	121 - 18
2E1	CONNECTORS, HARNESS, UPPER, FOR ENGINE	40 - 60	1C2	COUPLING WITH HUB, ENGINE-TRANSMISSION.....	20 - 20
2D24	CONNECTORS, LOWER HARNESS FOR ENGINE	40 - 58	5C23	COVER, BEATER	120 - 38
2C9	CONNECTORS, SUPPLEMENTARY TERMINALS	40 - 22	6B18	COVER, CHOPPER - CHOP-TO-BALE	125 - 5D
2B15	CONSOLE PANEL, OVERHEAD.....	40 - 4	4G11	COVER, COMPRESSOR A/C R134A	90 - 78
4H7	CONTOUR MASTER - FEEDER HOUSE FRAME, TILT BEAM & CLOSURE PLATES.....	110 - 14	4B22	COVER, ENGINE	80 - 14
4K5	CONTOUR MASTER DRIVESHAFT	111 - 48	4B24	COVER, ENGINE	80 - 16
3G21	CONTOUR MASTER HYDRAULIC HOSES, L.H SIDE (OPTIONAL).....	70 - 40	1E22	COVER, FUEL INJECTION PUMP ACCESS	24 - 68
4I21	CONTOUR MASTER LOCKOUT ADAPTER KIT (BELT PU & 4R CORN HEADS)	111 - 14	2I3	COVER, HYDROSTATIC DRIVE PUMP (RING AND PINION)	50 - 49
3H14	CONTOUR MASTER SOLENOID CONTROL RELIF VALVE	70 - 60	3B13	COVER, INNER	51 - 4
3I11	CONTOUR MASTER TILT CYLINDER.....	70 - 84			
3I12	CONTOUR MASTER TILT CYLINDER HOSES AND FITTINGS.....	70 - 85			
2D3	CONTOUR MASTER WIRING HARNESS	40 - 36			
2D5	CONTOUR MASTER WIRING HARNESS ADAPTER ...	40 - 38			

ALPHABETICAL INDEX - CONTINUED

<i>GRID</i>		<i>PAGE</i>	<i>GRID</i>		<i>PAGE</i>
1D12	COVER, OIL COOLER	24 - 28	3J4	CYLINDER, LEVELING	70 - 103
1D6	COVER, ROCKER ARM	24 - 21	3D13	CYLINDER, MASTER, BRAKE	60 - 8
211	COVER, SHAFT, DRIVE PUMP, HYDROSTATIC (RING AND PINION)	50 - 46	3E13	CYLINDER, STEERING	60 - 32
1D20	COVER, THERMOSTAT	24 - 38	5B22	CYLINDER, THRESHING, RASP BAR	120 - 14
5B10	COVER, THRESHING CYLINDER	120 - 2	5C7	CYLINDER, THRESHING, SPIKE TOOTH	120 - 22
1D1	COVER, TIMING GEAR	24 - 16	3I11	CYLINDER, TILT - CONTOUR MASTER	70 - 84
2H5	COVER, TRANS/DIFFERENTIAL	50 - 24	3I12	CYLINDER, TILT, HOSES AND FITTINGS - CONTOUR MASTER	70 - 85
6G11	COVERS AND CHANNEL, CROSS AUGER	130 - 58	3I9	CYLINDER, UNLOADING AUGER SWING HYDRAULIC	70 - 82
1C6	CRANKCASE, ENGINE, OIL DRAIN	20 - 24	3D9	CYLINDERS, MASTER, AND BRAKE PEDALS	60 - 4
5E13	CRANKS, STRAW WALKER, STRAW SPREADER DRIVE AND SHIELD	120 - 78			
1C21	CRANKSHAFT	24 - 11		D	
1E15	CRANKSHAFT DAMPERS	24 - 60	1C21	DAMPER KEY	24 - 11
1D1	CRANKSHAFT FRONT OIL SEAL	24 - 16	1E15	DAMPERS, CRANKSHAFT	24 - 60
1C22	CRANKSHAFT KIT, UNDERSIZE (CONNECTING ROD JOURNAL)	24 - 12	6J1	DECALS, FRONT	170 - 46
1C24	CRANKSHAFT OIL SEAL AND HOUSING	24 - 14	6I22	DECALS, LEFT-HAND	170 - 43
1E15	CRANKSHAFT PULLEY AND DAMPERS	24 - 60	6J1	DECALS, REAR	170 - 46
6G7	CROSS AUGER BEARING PLATE, L.H.	130 - 54	6H9	DECALS, SAFETY AND LOCATIONS	170 - 6
6G11	CROSS AUGER COVERS AND CHANNEL	130 - 58	6H11	DECALS, SAFETY AND LOCATIONS	170 - 8
6G9	CROSS AUGERS, GRAIN TANK	130 - 56	6H13	DECALS, SAFETY AND LOCATIONS	170 - 10
4F21	CUP HOLDER	90 - 62	6H15	DECALS, SAFETY AND LOCATIONS	170 - 12
5B24	CURTAIN, BEATER GRATE	120 - 16	6H17	DECALS, SAFETY AND LOCATIONS	170 - 14
5E15	CURTAIN, SEPARATOR (SPIKE-TOOTH CYLINDER)	120 - 80	6H19	DECALS, SAFETY AND LOCATIONS - FRENCH	170 - 16
5E16	CURTAIN, SEPARATOR, RASP BAR CYLINDER	120 - 81	6H21	DECALS, SAFETY AND LOCATIONS - FRENCH	170 - 18
6C23	CURTAIN, SPREADER	125 - 34	6H23	DECALS, SAFETY AND LOCATIONS - FRENCH	170 - 20
6B11	CURTAINS AND DEFLECTORS, CORN	125 - 2	6I1	DECALS, SAFETY AND LOCATIONS - FRENCH	170 - 22
6F7	CURTAINS, GRAIN TANK	130 - 30	6I3	DECALS, SAFETY AND LOCATIONS - FRENCH	170 - 24
3G5	CUTTING PLATFORM, 200 SERIES CONVERSION PARTS	70 - 23	6I7	DECALS, SAFETY AND LOCATIONS - ITALIAN	170 - 28
211	CYLINDER BLOCK	50 - 46	6I11	DECALS, SAFETY AND LOCATIONS - ITALIAN	170 - 32
1C13	CYLINDER BLOCK FITTINGS	24 - 2	6I13	DECALS, SAFETY AND LOCATIONS - ITALIAN	170 - 34
2111	CYLINDER BLOCK, HYDROSTATIC DRIVE	50 - 58	6I15	DECALS, SAFETY AND LOCATIONS - ITALIAN	170 - 36
2113	CYLINDER BLOCK, HYDROSTATIC DRIVE	50 - 60	6I17	DECALS, SAFETY AND LOCATIONS - ITALIAN	170 - 38
5B10	CYLINDER COVER, THRESHING	120 - 2	6I19	DECALS, SAFETY AND LOCATIONS - ITALIAN	170 - 40
5B16	CYLINDER DOOR	120 - 8	6I21	DECALS, SAFETY AND LOCATIONS - ITALIAN	170 - 42
5B18	CYLINDER DOOR, CORN (ARGENTINA ONLY)	120 - 10	6I23	DECALS, SAFETY AND LOCATIONS - ITALIAN	170 - 44
5G5	CYLINDER DRIVE ADJUSTING BRACKET, DUAL-RANGE	121 - 38	6J3	DECALS, TOP	170 - 48
5F19	CYLINDER DRIVE GEAR CASE, DUAL-RANGE	121 - 28	5H13	DECK, SUPPORTS AND FINS, STRAW CHOPPER	121 - 66
5G1	CYLINDER DRIVE INTERMEDIATE SHAFT MOUNTING, DUAL-RANGE	121 - 34	6B17	DECLUTCHING LEVER - CHOP-TO-DROP	125 - 5C
5G3	CYLINDER DRIVE INTERMEDIATE SHEAVE, DUAL-RANGE	121 - 36	6B11	DEFLECTORS AND CURTAINS, CORN	125 - 2
5F23	CYLINDER DRIVE TIGHTENER, DUAL-RANGE	121 - 32	2B23	DIAL-A-MATIC ADAPTOR HARNESS	40 - 12
5F15	CYLINDER DRIVE, SINGLE RANGE	121 - 24	6H1	DIAL-A-MATIC ELECTRICAL HARNESS	160 - 4
5F17	CYLINDER DRIVE, SLOW SPEED	121 - 26	6G23	DIAL-A-MATIC HEADER HEIGHT CONTROL HYDRAULIC LINE AND VALVE BLOCK	160 - 2
1D3	CYLINDER HEAD	24 - 18	6G24	DIAL-A-MATIC HEADER HEIGHT CONTROL VALVE BLOCK SOLENOID	160 - 3
1D3	CYLINDER HEAD BOLTS	24 - 18	3G24	DIAL-A-MATIC HEADER HEIGHT CONTROL, VALVE BLOCK SOLENOID	70 - 45
1D3	CYLINDER HEAD GASKET	24 - 18	2H10	DIFFERENTIAL GEARS AND SHAFTS	50 - 30
1E13	CYLINDER HEAD GASKET KIT	24 - 58	2H12	DIFFERENTIAL GEARS AND SHAFTS (SIDEHILL)	50 - 32
3E14	CYLINDER KIT, STEERING	60 - 33	1D17	DIPSTICK, ENGINE OIL	24 - 34
1C20	CYLINDER LINERS	24 - 10	6B23	DISC, CHAFF SPREADER (DUAL MOTOR)	125 - 10
3J9	CYLINDER PINS, LEVELING	70 - 108	3J15	DIVIDER MOUNTING, FLOW	70 - 114
5B20	CYLINDER SHEAR BAR	120 - 12	3J15	DIVIDER VALVE, FLOW	70 - 114
3H17	CYLINDER SPEED AND REEL LIFT, SOLENOID CONTROL VALVE	70 - 64	4D20	DOOR AND GLASS, CAB	90 - 12
3H12	CYLINDER SPEED HYDRAULIC LINES AND HOSES ..	70 - 58	4D18	DOOR LATCH, CAB	90 - 10
3D17	CYLINDER, BRAKE SLAVE	60 - 12	4C24	DOOR, CORNER SHEET, LEFT - HAND FRONT	80 - 42
3I7	CYLINDER, DRIVE, GRAIN TANK UNLOADING	70 - 80	5B16	DOOR, CYLINDER	120 - 8
3G23	CYLINDER, HEADER LIFT, HYDRAULIC	70 - 43	5B18	DOOR, CYLINDER DOOR (ARGENTINA ONLY)	120 - 10
3I5	CYLINDER, HYDRAULIC, UNLOADING AUGER SWING, LINES AND HOSES	70 - 78	6E4	DOOR, HINGED, CLEAN GRAIN LOWER AUGER	130 - 2
3J3	CYLINDER, LEVELING	70 - 102	1B22	DOOR, RADIATOR ACCESS	20 - 14
			1B12	DOOR, ROTARY SCREEN	20 - 4
			6B13	DOOR, STRAW CHOPPER	125 - 4
			1D20	DRAIN VALVE, CYLINDER HEAD	24 - 38

ALPHABETICAL INDEX - CONTINUED

GRID		PAGE	GRID		PAGE
1F2	DRAIN VALVE, FUEL TANK	30 - 2	1B14	DRIVES, ENGINE FAN	20 - 6
1F6	DRAIN VALVE, FUEL TANK	30 - 6	5H3	DRIVES, STRAW CHOPPER (FRONT)	121 - 60
1D15	DRAIN VALVE, OIL PAN	24 - 32	5H7	DRIVES, STRAW CHOPPER, (REAR)	121 - 62
1B18	DRAIN VALVE, RADIATOR	20 - 10	5H5	DRIVES, STRAW CHOPPER, FINE CUT (FRONT)	121 - 61A
6G15	DRIVE BELT GUIDE, UNLOADING AUGER	130 - 62	5H9	DRIVES, STRAW CHOPPER, FINE CUT (REAR)	121 - 63A
6D8	DRIVE BRACKET, TAILINGS AND LOWER TROUGH SUPPORT	125 - 43	4K5	DRIVESHAFT, CONTOUR MASTER	111 - 48
4J23	DRIVE CHAIN IDLERS AND SHIELD BRACKETS (SIDEHILL)	111 - 42	3D15	DRUM AND SHOES, BRAKE	60 - 10
6D14	DRIVE CHAIN TIGHTENER, UPPER TAILINGS	125 - 50	4J7	DRUM, CHAIN AND IDLER SHAFT, FEEDER CONVEYOR, SIDEHILL	111 - 26
2G12	DRIVE CONTROL CABLES, HYDROSTATIC	50 - 4	2E5	DUAL LEVEL MONITOR HARNESS, GRAIN TANK AND UNLOADING AUGER LIGHT	40 - 64
219	DRIVE DISPLACEMENT CONTROL VALVE, HYDROSTATIC (RING AND PINION)	50 - 56	2G17	DUAL WHEELS, WIDE-SPACED	50 - 9
1C21	DRIVE GEAR, OIL PUMP	24 - 11	5G5	DUAL-RANGE CYLINDER DRIVE ADJUSTING BRACKET	121 - 38
5G11	DRIVE GEARCASE, STRAW WALKER	121 - 44	5F19	DUAL-RANGE CYLINDER DRIVE GEAR CASE	121 - 28
2G10	DRIVE LEVER, CABLE AND SWITCH, HYDROSTATIC	50 - 2	5G1	DUAL-RANGE CYLINDER DRIVE INTERMEDIATE SHAFT MOUNTING	121 - 34
3C24	DRIVE MOTOR, HYDROSTATIC	51 - 40	5G3	DUAL-RANGE CYLINDER DRIVE INTERMEDIATE SHEAVE	121 - 36
2111	DRIVE MOTOR, HYDROSTATIC (RING AND PINION)	50 - 58	5F23	DUAL-RANGE CYLINDER DRIVE TIGHTENER	121 - 32
213	DRIVE PUMP COVER, HYDROSTATIC (RING AND PINION)	50 - 49	5F21	DUAL-RANGE LOCKOUT ARM	121 - 30
211	DRIVE PUMP, COVER, SHAFT, HYDROSTATIC (RING AND PINION)	50 - 46	1B12	DUCT, ROTARY SCREEN AIR	20 - 4
3D1	DRIVE PUMP, HYDROSTATIC HYDRAULIC PUMP CONNECTING HARDWARE	51 - 42	4E12	DUCTS, HEATER AND AIR CONDITIONING	90 - 29
313	DRIVE PUMP, REEL/BELT PICKUP	70 - 76	4H23	DUST FAN BELT, LH FEEDER HOUSE	110 - 30
5F5	DRIVE SHAFT, GEARCASE AND PRIMARY COUNTERSHAFT	121 - 14	4H21	DUST FAN, LH SIDE FEEDER HOUSE	110 - 28
4K1	DRIVE SHAFT, HEADER - SH -	111 - 44	3F23	DUST SUPPRESSION, LUBE OIL PUMP	70 - 16
4K3	DRIVE SHAFT, HEADER - SH -	111 - 46	E		
2H14	DRIVE SHAFTS, FINAL (SIDEHILL)	50 - 34	1E4	E.C.U.	24 - 48
4C15	DRIVE SHIELD, R.H. REAR	80 - 32	2E19	ECU MOUNTING SUPPORT	40 - 78
4C11	DRIVE SHIELDS, AUGER, (R.H.)	80 - 28	2E17	ECU MOUNTING SUPPORT (SN -XXXXXX)	40 - 76
4G24	DRIVE SHIELDS, CONTOUR MASTER FEEDER HOUSE	110 - 6	3D23	EITHERAID START BUTTON	60 - 18
4C13	DRIVE SHIELDS, MUD AND FAN (L.H.)	80 - 30	4F22	EITHERAID START BUTTON	90 - 64
4G20	DRIVE SHIELDS, SAFETY STOP, FEEDER HOUSE	110 - 2	2G1	ELECTRICAL CONNECTOR SERVICE KIT	40 - 110
4G22	DRIVE SHIELDS, SAFETY STOP, FEEDER HOUSE (SIDEHILL)	110 - 4	2G3	ELECTRICAL CONNECTOR SERVICE KIT	40 - 112
5H11	DRIVE SHIELDS, STRAW CHOPPER	121 - 64	6H1	ELECTRICAL HARNESS, DIAL-A-MATIC	160 - 4
511	DRIVE SPROCKETS, STRAW CHOPPER	121 - 78	2F3	ELECTRICAL SERVICE OUTLET	40 - 86
2G25	DRIVE SUPPORT SHIELD, FINAL (SIDEHILL)	50 - 18	1E11	ELECTRICAL TERMINALS AND CONNECTORS, WEATHERPACK	24 - 56
6E23	DRIVE TIGHTENER, ELEVATOR AND IDLER, CLEAN GRAIN	130 - 22	5F11	ELECTROMAGNETIC HEADER CLUTCH	121 - 20
5G23	DRIVE TIGHTENER, FEEDER HOUSE	121 - 56	1E4	ELECTRONIC CONTROL UNIT	24 - 48
4119	DRIVE TIGHTENER, FIXED SPEED FEEDER HOUSE	111 - 12	1E4	ELECTRONIC FUEL INJECTION PUMP	24 - 48
6D10	DRIVE TIGHTENER, LOWER TAILINGS AUGER	125 - 46	2E21	ELECTRONICS MODULE, CENTRAL AND CIRCUIT BOARDS	40 - 80
4117	DRIVE TIGHTENER, VARIABLE SPEED	111 - 10	5D21	ELEMENT, CHAFFER	120 - 62
2G14	DRIVE WHEELS	50 - 6	5D23	ELEMENT, CHAFFER EXTENSION	120 - 64
2G15	DRIVE WHEELS	50 - 7	5E3	ELEMENT, SIEVE	120 - 68
2G16	DRIVE WHEELS, HIGH FLOATATION	50 - 8	6D7	ELEVATOR CONVEYOR CHAIN, SPROCKETS AND BEARINGS, TAILINGS	125 - 42
5H1	DRIVE, BELT PICKUP / REEL PUMP MOUNTING SHEAVE	121 - 58	6E23	ELEVATOR DRIVE TIGHTENER AND IDLER, CLEAN GRAIN	130 - 22
5G17	DRIVE, CLEANING FAN, SEPARATOR	121 - 50	6E21	ELEVATOR GEARCASE AND SHEAVE, CLEAN GRAIN	130 - 20
6H6	DRIVE, CYLINDER INTERMEDIATE, BELTS	170 - 3	6D5	ELEVATOR HOUSING, TAILINGS	125 - 40
6H6	DRIVE, CYLINDER, BELTS	170 - 3	6E12	ELEVATOR SHAFT, SPROCKET AND SHEAVE, UPPER CLEAN GRAIN	130 - 10
5G21	DRIVE, FAN, SPEED CONTROL SHEAVE LINKAGE	121 - 54	6F1	ELEVATOR SHIELDS, UPPER CLEAN GRAIN	130 - 24
2H16	DRIVE, FINAL (RING AND PINION)	50 - 36	6H6	ELEVATOR, CLEAN GRAIN BELTS	170 - 3
5G9	DRIVE, GEARCASE, STRAW WALKER	121 - 42	6E6	ELEVATOR, LOWER AND CONVEYOR CHAIN, CLEAN GRAIN	130 - 4
3C5	DRIVE, HYDROSTATIC, LOWER OIL LINES (FOUR WHEEL DRIVE)	51 - 20	6E8	ELEVATOR, LOWER AND CONVEYOR CHAIN, CLEAN GRAIN	130 - 6
3C7	DRIVE, HYDROSTATIC, LOWER OIL LINES (TWO WHEEL DRIVE) (655201-)	51 - 22	6E10	ELEVATOR, UPPER CLEAN GRAIN	130 - 8
5G7	DRIVE, SECONDARY COUNTERSHAFT	121 - 40			

ALPHABETICAL INDEX - CONTINUED

GRID		PAGE	GRID		PAGE
4B16	ENGINE ACCESS DOOR, HANDRAILS, AND RADIATOR DOOR.....	80 - 8	1E18	FAN PULLEY, AIR CONDITIONER COMPRESSOR	24 - 63
4C1	ENGINE ACCESS PLATFORM AND STEP	80 - 18	4G3	FAN, AIR CONDITIONING/HEATER AND PRESSURIZING	90 - 70
1C4	ENGINE BLOCKER HEATER	20 - 22	2E9	FAN, ALTERNATOR	40 - 68
2E15	ENGINE CIRCUIT BREAKERS	40 - 74	6H7	FAN, CLEANING, BELTS	170 - 4
4B22	ENGINE COMPARTMENT.....	80 - 14	5G17	FAN, DRIVE, CLEANING, SEPARATOR	121 - 50
6H5	ENGINE DRIVE BELTS.....	170 - 2	4H21	FAN, DUST, LH SIDE FEEDER HOUSE	110 - 28
6H5	ENGINE DRIVE SHEAVES	170 - 2	1B14	FAN, ENGINE AND DRIVES.....	20 - 6
1B14	ENGINE FAN AND DRIVES	20 - 6	5D7	FANS AND SHROUDS, CLEANING	120 - 48
3I17	ENGINE GEARCASE OIL FILTER ASSEMBLY	70 - 90	5D9	FANS AND SHROUDS, CLEANING	120 - 50
3I19	ENGINE GEARCASE PRESSURE REGULATOR	70 - 92	1D14	FC:0407	24 - 31
5E24	ENGINE GEARCASE- SEPARATOR DRIVE WET-CLUTCH AND PUMP DRIVE SHAFT	121 - 6	1D22	FC:0410	24 - 40
5E20	ENGINE GEARCASE- STRAW CHOPPER, UNLOADING DRIVE AND SEPARATOR DRIVE GEAR	121 - 2	1E4	FC:0413	24 - 48
3D1	ENGINE GEARCASE, HYDROSTATIC DRIVE PUMP, HYDRAULIC PUMP CONNECTING HARDWARE	51 - 42	1E6	FC:0413	24 - 50
5F1	ENGINE GEARCASE, SEPARATOR AND PUMP DRIVE	121 - 10	1E7	FC:0413	24 - 51
5F3	ENGINE GEARCASE, SEPARATOR AND PUMP DRIVE	121 - 12	1D21	FC:0418	24 - 39
5E22	ENGINE GEARCASE, STRAW CHOPPER, UNLOADING DRIVE AND SEPARATOR DRIVE GEAR	121 - 4	5B17	FC:5652	120 - 9
1B24	ENGINE INTERCOOLER.....	20 - 16	4H17	FEED PLATE LATCH HANDLE	110 - 24
1C1	ENGINE MOUNTS AND REAR SUPPORT	20 - 18	6H5	FEEDER CONVEYOR BELTS.....	170 - 2
4F15	ENGINE NEUTRAL SAFETY START SWITCH	90 - 56	4J5	FEEDER CONVEYOR BRACKET.....	111 - 24
1C12	ENGINE OIL (TORQ-GARD PLUS-50)	24 - 1	4J5	FEEDER CONVEYOR DRIVE CHAIN	111 - 24
1D12	ENGINE OIL COOLER	24 - 28	4J9	FEEDER CONVEYOR DRIVE CHAIN, TIGHTENER AND GUIDES.....	111 - 28
1D17	ENGINE OIL DIPSTICK	24 - 34	4J11	FEEDER CONVEYOR DRIVE CHAIN, TIGHTENER AND GUIDES (SIDEHILL).....	111 - 30
1D17	ENGINE OIL DIPSTICK TUBE	24 - 34	4J5	FEEDER CONVEYOR IDLER	111 - 24
1D13	ENGINE OIL FILTER	24 - 30	4J7	FEEDER CONVEYOR IDLER SHAFT, DRUM AND CHAIN, SIDEHILL.....	111 - 26
2D20	ENGINE OIL PRESSURE SENDING UNIT	40 - 54	2F13	FEEDER HOUSE BACKSHAFT SPEED SENSOR	40 - 96
1D8	ENGINE OIL PUMP	24 - 24	6H7	FEEDER HOUSE BELTS	170 - 4
1D10	ENGINE OIL PUMP INTAKE.....	24 - 26	4G24	FEEDER HOUSE DRIVE SHIELDS - CONTOUR MASTER	110 - 6
1C18	ENGINE OVERHAUL KIT	24 - 8	4G20	FEEDER HOUSE DRIVE SHIELDS AND SAFETY STOP	110 - 2
4B24	ENGINE PLATFORM.....	80 - 16	4G22	FEEDER HOUSE DRIVE SHIELDS AND SAFETY STOP (SIDEHILL)	110 - 4
2D22	ENGINE PLUGGED AIR FILTER WARNING SWITCH ..	40 - 56	5G23	FEEDER HOUSE DRIVE TIGHTENER.....	121 - 56
4B22	ENGINE RAILS	80 - 14	4I19	FEEDER HOUSE DRIVE TIGHTENER (FIXED SPEED)	111 - 12
1E13	ENGINE REBUILD GASKET KIT	24 - 58	4H23	FEEDER HOUSE DUST FAN BELT, LH	110 - 30
1C15	ENGINE SERVICE PARTS, KEY	24 - 5	4H21	FEEDER HOUSE DUST FAN, LH SIDE.....	110 - 28
1E21	ENGINE SPEED SENSOR	24 - 66	4H15	FEEDER HOUSE FLOOR AND SUPPORT	110 - 22
2D20	ENGINE TEMP. SWITCH	40 - 54	4H1	FEEDER HOUSE FRAME	110 - 8
2D20	ENGINE TEMPERATURE SENDING UNIT	40 - 54	4H3	FEEDER HOUSE FRAME, SIDEHILL.....	110 - 10
2D20	ENGINE WIRING HARNESS, (LOWER PARTS).....	40 - 54	4H7	FEEDER HOUSE FRAME, TILT BEAM & CLOSURE PLATES, CONTOUR MASTER.....	110 - 14
1C2	ENGINE-TRANSMISSION COUPLING WITH HUB	20 - 20	4J21	FEEDER HOUSE FRONT DRIVE SHAFT, SHEAVE AND MOUNTINGS (FIXED SPEED WITH	111 - 40
2D18	ENGINE, HARNESS (UPPER PARTS).....	40 - 52	3G1	FEEDER HOUSE GEARCASE OIL COOLER	70 - 18
2D20	ETHER START SOLENOID.....	40 - 54	4I5	FEEDER HOUSE LEVELING CABLES.....	110 - 36
1F9	ETHER STARTING AID.....	30 - 9	4J15	FEEDER HOUSE LOWER SHAFT, PADDLES AND SPROCKET (SIDEHILL)	111 - 34
1E1	ETHER STARTING FITTINGS	24 - 45	3G3	FEEDER HOUSE OIL COOLER GEARBOX FITTINGS AND HOSES	70 - 20
1D25	EXHAUST MANIFOLD GASKETS.....	24 - 44	3F21	FEEDER HOUSE OIL COOLER LUBE OIL PUMP	70 - 14
1D25	EXHAUST MANIFOLD HEAT SHIELD	24 - 44	3F23	FEEDER HOUSE OIL COOLER, LUBE OIL PUMP.....	70 - 16
1D25	EXHAUST MANIFOLDS.....	24 - 44	4H13	FEEDER HOUSE OUTER CLOSURE FRAME	110 - 20
1F12	EXHAUST PIPE AND MUFFLER	30 - 12	4J15	FEEDER HOUSE PADDLE SHAFT (SIDEHILL).....	111 - 34
1D3	EXHAUST VALVE SHIELD	24 - 18	4J15	FEEDER HOUSE PADDLES, LOWER SHAFT (SIDEHILL).....	111 - 34
1D3	EXHAUST VALVES	24 - 18	4H19	FEEDER HOUSE RETURN FLOOR.....	110 - 26
4C7	EXTENSION AND LADDER, REAR	80 - 24	4E17	FEEDER HOUSE REVERSER FOOT CONTROL	90 - 34
5D23	EXTENSION ELEMENT, CHAFFER	120 - 64	4I13	FEEDER HOUSE REVERSER FOOT CONTROL	111 - 6
6F9	EXTENSIONS, GRAIN TANK	130 - 32	4H5	FEEDER HOUSE SHELL - CONTOUR MASTER	110 - 12
	F		4I24	FEEDER HOUSE SLIP CLUTCH	111 - 18
4C13	FAN AND MUD DRIVE SHIELDS (L.H.).....	80 - 30	4I22	FEEDER HOUSE UPPER SHAFT	111 - 16
5G19	FAN DRIVE SPEED CONTROL LINKAGE.....	121 - 52			
5G21	FAN DRIVE SPEED CONTROL SHEAVE LINKAGE.....	121 - 54			
1E17	FAN DRIVE, FIXED	24 - 62			
1E17	FAN PULLEY HUB.....	24 - 62			

ALPHABETICAL INDEX - CONTINUED

GRID		PAGE	GRID		PAGE
3F20	FEEDER HOUSE VARIABLE DRIVE HYDRAULIC HOSE	70 - 12	2F17	FLOODLAMP, FIELD LIGHTS.....	40 - 100
4H5	FEEDER HOUSE WEAR PLATES - CONTOUR MASTER	110 - 12	4H15	FLOOR AND SUPPORT, FEEDER HOUSE.....	110 - 22
5B12	FEEDER HOUSE/SEPARATOR SEAL, STONE TRAP AND DOOR.....	120 - 4	4D10	FLOOR MAT AND PANELS, CAB	90 - 2
5B14	FEEDER HOUSE/SEPARATOR SEAL, STONE TRAP AND DOOR.....	120 - 6	3F16	FLOW CONTROL VALVE, REEL DRIVE	70 - 6
2B21	FIELD LIGHTING, AUXILIARY	40 - 10	6C11	FLOW CONTROL VALVE, REEL DRIVE	125 - 22
2F17	FIELD LIGHTS	40 - 100	3J15	FLOW DIVIDER MOUNTING.....	70 - 114
2B15	FIELD LIGHTS SWITCH, AUX, OPTIONAL	40 - 4	3J15	FLOW DIVIDER VALVE.....	70 - 114
4E11	FILTER AND HOUSING, AIR, CAB	90 - 28	3J16	FLOW DIVIDER, LEVELING SYSYEM	70 - 116
3I17	FILTER ASSEMBLY, OIL, ENGINE GEARCASE	70 - 90	1C25	FLYWHEEL.....	24 - 15
1F10	FILTER, AIR AND INTAKE TUBES	30 - 10	1C25	FLYWHEEL HUB	24 - 15
1D13	FILTER, ENGINE OIL	24 - 30	4D12	FOAM, SEALS AND SOUND DEADENING, CAB	90 - 4
1E9	FILTER, FUEL	24 - 54	1D2	FOLLOWER, CAMSHAFT	24 - 17
2D20	FILTER, HYDRAULIC	40 - 54	1D5	FOLLOWER, CAMSHAFT	24 - 20
2I7	FILTER, HYDROSTATIC DRIVE PUMP	50 - 53	4E17	FOOT PEDAL, FEEDER HOUSE REVERSER	90 - 34
3G6	FILTER, MAIN HYDRAULIC	70 - 24	4I13	FOOT PEDAL, FEEDER HOUSE REVERSER	111 - 6
2D22	FILTER, PLUGGED AIR WARNING SWITCH	40 - 56	4F1	FORE-AND-AFT, SEAT ADJUST	90 - 42
1D1	FILTER, WATER PUMP (WEEP HOLE).....	24 - 16	3C15	FOUR WHEEL DRIVE HYDRAULIC LINES AND HOS ES, L.H. (655201-).....	51 - 30
2C15	FILTER, WINDSHIELD WASHER	40 - 28	5D19	FRAME ARMS, PRECLEANER CHAFFER	120 - 60
4G1	FILTERS, AIR CONDITIONER AND HEATER AND HOUSING.....	90 - 68	4D22	FRAME, CAB AND SUPPORT	90 - 14
4G1	FILTERS, HEATER AND AIR CONDITIONING AND HOUSING.....	90 - 68	5E1	FRAME, CHAFFER	120 - 66
2H16	FINAL DRIVE (RING AND PINION).....	50 - 36	4H1	FRAME, FEEDER HOUSE	110 - 8
2H20	FINAL DRIVE AXLE, GEAR AND BEARINGS (RING AND PINION)	50 - 40	4H7	FRAME, FEEDER HOUSE, CONTOUR MASTER	110 - 14
2H21	FINAL DRIVE AXLE, GEAR AND BEARINGS (RING AND PINION) (SIDEHILL)	50 - 41	4H3	FRAME, FEEDER HOUSE, SIDEHILL	110 - 10
2H17	FINAL DRIVE HOUSING AND BEARING CAP (RING AND PINION)	50 - 37	1B22	FRAME, RADIATOR	20 - 14
2H18	FINAL DRIVE HOUSING AND BEARING CAP (RING AND PINION) (SIDEHILL)	50 - 38	3E15	FRAME, REAR AXLE TRASH SHIELD	60 - 34
2G22	FINAL DRIVE INNER CASTING AND PIVOT TUBE (SIDEHILL) (RING AND PINION)	50 - 14	4B10	FRAME, SEPARATOR.....	80 - 2
2H24	FINAL DRIVE PINION AND BEARINGS (RING AND PINION) (SIDEHILL)	50 - 44	4B12	FRAME, SEPARATOR.....	80 - 4
2H22	FINAL DRIVE PINION, SHAFTS AND BEARINGS (RING AND PINION)	50 - 42	5E5	FRAME, SIEVE	120 - 70
3C22	FINAL DRIVE SHAFT SHIELDS (RING AND PINION)	51 - 38	2G18	FRONT AXLE (RING AND PINION FINAL DRIVE)	50 - 10
2H14	FINAL DRIVE SHAFTS (SIDEHILL)	50 - 34	2G19	FRONT AXLE (SIDEHILL) (RING AND PINION FINAL DRIVE)	50 - 11
2G25	FINAL DRIVE SUPPORT SHIELD (SIDEHILL)	50 - 18	4C24	FRONT CORNER SHEET AND DOOR (L.H.)	80 - 42
2F21	FINDER LIGHTS, SIDE	40 - 104	4C20	FRONT CORNER SHEET, R H	80 - 38
5H19	FINE CUT ROTOR STRAW CHOPPER (PADDLED NARROW).....	121 - 72	1D1	FRONT OIL SEAL	24 - 16
5H17	FINE CUT ROTOR STRAW CHOPPER (STRAIGHT NARROW).....	121 - 70	4J3	FRONT SHAFT SLIP CLUTCH - FEEDER HOUSE (SIDEHILL).....	111 - 22
5H5	FINE CUT STRAW CHOPPER DRIVES (FRONT)	121 - 61A	4I15	FRONT SHAFT WITH REVERSER (VARIABLE)	111 - 8
5H9	FINE CUT STRAW CHOPPER DRIVES (REAR).....	121 - 63A	4B20	FRONT SHIELD ASSEMBLY, LEFT SIDE	80 - 12
5C13	FINGER GRATE, SPIKE-TOOTH	120 - 28	4B18	FRONT SHIELD ASSEMBLY, RIGHT SIDE	80 - 10
5H13	FINS, SUPPORTS AND DECK, STRAW CHOPPER.....	121 - 66	3E3	FRONT STEERING HOSES AND LINES.....	60 - 22
3G3	FITTINGS AND HOSES, OIL COOLER, GEARBOX, FEEDER HOUSE.....	70 - 20	4I9	FRONT VARIABLE DRIVE SHEAVE AND MOUNTINGS	111 - 2
6C15	FITTINGS AND LINES, CHAFF SPREADER	125 - 26	1D20	FRONT WATER MANIFOLD	24 - 38
1C13	FITTINGS, CYLINDER BLOCK	24 - 2	1E9	FUEL CHECK VALVE	24 - 54
1E1	FITTINGS, ETHER STARTING	24 - 45	1F8	FUEL COOLER	30 - 8
1F2	FITTINGS, FUEL TANK AND SUPPORTS.....	30 - 2	1E9	FUEL FILTER	24 - 54
1F6	FITTINGS, TANK FUEL LINES.....	30 - 6	1E9	FUEL FILTER BASE	24 - 54
3I12	FITTINGS, TILT CYLINDER - CONTOUR MASTER	70 - 85	1E9	FUEL FILTER LINES	24 - 54
1E17	FIXED FAN DRIVE	24 - 62	1E2	FUEL INJ LINES	24 - 46
3E18	FIXED REAR AXLE	60 - 38	1E8	FUEL INJECTION NOZZLE.....	24 - 52
4I19	FIXED SPEED FEEDER HOUSE DRIVE TIGHTENER..	111 - 12	1E2	FUEL INJECTION NOZZLES	24 - 46
3I22	FLAT O-RING KIT, HYDRAULIC.....	70 - 96	1E4	FUEL INJECTION PUMP.....	24 - 48
			2D18	FUEL INJECTION PUMP.....	40 - 52
			1E22	FUEL INJECTION PUMP ACCESS COVER	24 - 68
			1E6	FUEL INJECTION PUMP HOUSING CONNECTORS ...	24 - 50
			1E2	FUEL LEAK-OFF LINES	24 - 46
			1E4	FUEL LEAK-OFF LINES	24 - 48
			1F4	FUEL PUMP, WATER SEPARATOR, AND FUEL SENDER	30 - 4
			1F4	FUEL SENDER	30 - 4
			1E4	FUEL SHUT-OFF SOLENOID (FIP)	24 - 48
			1F6	FUEL TANK LINES	30 - 6
			1F2	FUEL TANK, SUPPORTS, AND FITTINGS	30 - 2
			1E7	FUEL TRANSFER PUMP (ROBERT BOSCH).....	24 - 51

ALPHABETICAL INDEX - CONTINUED

GRID		PAGE	GRID		PAGE
G					
1D6	GASKET ADHESIVE, ROCKER ARM COVER	24 - 21	3I7	GRAIN TANK UNLOADING DRIVE CYLINDER.....	70 - 80
1E13	GASKET KIT, CYLINDER HEAD	24 - 58	3I7	GRAIN TANK UNLOADING DRIVE CYLINDER MOUNTING	70 - 80
1E13	GASKET KIT, ENGINE REBUILD	24 - 58	2E3	GRAIN TANK WIRING HARNESS, LIGHT, LIMIT SWITCH AND LEVEL MONITOR	40 - 62
1E13	GASKET KIT, SHORT BLOCK	24 - 58	5C1	GRATE AND RASP BAR CONCAVE	120 - 18
1D3	GASKET, CYLINDER HEAD	24 - 18	5C3	GRATE AND RASP BAR CONCAVE	120 - 20
1D22	GASKET, INTAKE MANIFOLD	24 - 40	5B24	GRATE CURTAIN, BEATER	120 - 16
1D13	GASKET, OIL FILTER HOUSING	24 - 30	5C13	GRATE, FINGER, SPIKE-TOOTH.....	120 - 28
1D15	GASKET, OIL PAN	24 - 32	2H10	GROUND SPEED SENSOR	50 - 30
1D8	GASKET, OIL PUMP	24 - 24	2H12	GROUND SPEED SENSOR (SIDEHILL)	50 - 32
1D10	GASKET, OIL PUMP INTAKE.....	24 - 26	6B19	GUARD AND MOUNTING, STRAW SPREADER	125 - 6
1C24	GASKET, REAR OIL SEAL.....	24 - 14	6G15	GUIDE, UNLOADING AUGER DRIVE BELT	130 - 62
1D6	GASKET, ROCKER ARM COVER	24 - 21	4J9	GUIDES, TIGHTENER AND FEEDER CONVEYOR DRIVE CHAIN	111 - 28
1D20	GASKET, THERMOSTAT	24 - 38	4J11	GUIDES, TIGHTENER AND FEEDER CONVEYOR DRIVE CHAIN (SIDEHILL)	111 - 30
1D1	GASKET, TIMING GEAR COVER.....	24 - 16	H		
1D23	GASKET, TURBOCHARGER	24 - 42	5C24	HANDLE, LATCHES, SHOE GRAIN SUPPLY AUGER CLEANOUT DOOR	120 - 40
1D20	GASKET, WATER MANIFOLD	24 - 38	6C1	HANDLES AND SHIELDS, CHAFF SPREADER (DUAL MOTOR).....	125 - 12
1D18	GASKET, WATER PUMP	24 - 36	4E1	HANDRAILS, OPERATOR'S PIVOTING PLATFORM	90 - 18
1D25	GASKETS, EXHAUST MANIFOLD	24 - 44	4B16	HANDRAILS, RADIATOR DOOR AND ENGINE ACCESS DOOR	80 - 8
4I11	GEAR BOX, REVERSER.....	111 - 4	4G16	HARDWARE KIT, CAB	90 - 84
5F19	GEAR CASE, DUAL-RANGE CYLINDER DRIVE.....	121 - 28	4G12	HARDWARE KIT, COMPRESSOR R134A	90 - 79
6F11	GEAR CASE, LOWER, VERTICAL AUGER.....	130 - 34	2D24	HARNESS CONNECTORS, LOWER, FOR ENGINE	40 - 58
2H21	GEAR, BEARINGS AND AXLE, FINAL DRIVE (RING AND PINION) (SIDEHILL)	50 - 41	2E1	HARNESS CONNECTORS, UPPER, FOR ENGINE	40 - 60
1D2	GEAR, CAMSHAFT	24 - 17	2D18	HARNESS FOR ENGINE (UPPER PARTS).....	40 - 52
2H20	GEAR, FINAL DRIVE (RING AND PINION)	50 - 40	2D7	HARNESS FOR REAR LIGHTS AND SHIELDS	40 - 40
1E4	GEAR, INJECTION PUMP.....	24 - 48	2D18	HARNESS, FUEL PUMP, ALTERNATOR.....	40 - 52
1C21	GEAR, OIL PUMP DRIVE	24 - 11	2E3	HARNESS, GRAIN TANK WIRING, LIGHT, LIMIT SWITCH AND LEVEL MONITOR	40 - 62
1D8	GEAR, OIL PUMP DRIVE	24 - 24	2C23	HARNESS, LH FRT MAIN, (9510 SN -680200) (9510SH SN -680500)	40 - 34
1C25	GEAR, STARTER.....	24 - 15	2D1	HARNESS, LH MAIN FRT (9510 SN 680201-) (9510SH SN 680501-)	40 - 35A
3G3	GEARBOX FITTINGS AND HOSES, OIL COOLER, FEEDER HOUSE.....	70 - 20	2C21	HARNESS, MAIN LH FRT. (9510 SN 680201-) (9510SH SN 680501-)	40 - 33A
3D1	GEARCASE	51 - 42	2D5	HARNESS, MAIN, LH CTR (9510 SN 680201-) (9510SH SN 680501-)	40 - 38
5G9	GEARCASE DRIVE, STRAW WALKER	121 - 42	2C19	HARNESS, MAIN, LH FRT (9510 SN -680200) (9510SH SN - 680500).....	40 - 32
5F5	GEARCASE, DRIVE SHAFT AND PRIMARY COUNTERSHAFT	121 - 14	1E19	HARNESS, STARTER, WIRING	24 - 64
6E21	GEARCASE, ELEVATOR AND SHEAVE, CLEAN GRAIN	130 - 20	2D16	HARNESS, WIRING AND MONITOR, HARVESTRAK....	40 - 50
5E24	GEARCASE, ENGINE	121 - 6	2C5	HARNESS, WIRING, A/C, HEATER AND AIRSEAT	40 - 18
5F1	GEARCASE, ENGINE	121 - 10	2B23	HARNESS, WIRING, ARMREST.....	40 - 12
5F3	GEARCASE, ENGINE	121 - 12	2B13	HARNESS, WIRING, CAB.....	40 - 2
6G12	GEARCASE, HORIZONTAL UNLOADING AUGER DRIVE	130 - 59	2D9	HARNESS, WIRING, R.H. MAIN.....	40 - 42
5F7	GEARCASE, PRIMARY COUNTERSHAFT	121 - 16	2C3	HARNESS, WIRING, STEERING COLUMN.....	40 - 16
5F9	GEARCASE, PRIMARY COUNTERSHAFT	121 - 18	2D3	HARNESS,MAIN, LH CTR (9510 SN -680200) (9510SH SN -680500).....	40 - 36
2H10	GEARS AND SHAFTS, DIFFERENTIAL.....	50 - 30	2B17	HARVESTRAK GAUGE	40 - 6
2H12	GEARS AND SHAFTS, DIFFERENTIAL (SIDEHILL).....	50 - 32	4E13	HARVESTRAK GAUGE	90 - 30
2H8	GEARS, BEARINGS AND PINION SHAFT, TRANSMISSION	50 - 28	2D16	HARVESTRAK MONITOR SYSTEM AND WIRING HARNESS	40 - 50
2H6	GEARS, LUBE PUMP, BEARINGS AND INPUT SHAFT, TRANSMISSION	50 - 26	1D3	HEAD BOLT KIT	24 - 18
2H3	GEARSHIFT LEVER AND LINKAGE	50 - 22	1D3	HEAD, CYLINDER	24 - 18
4E15	GEARSHIFT LEVER AND LINKAGE	90 - 32	6H7	HEADER BELTS	170 - 4
4D20	GLASS AND DOOR, CAB.....	90 - 12	4K1	HEADER DRIVE SHAFT - SH -	111 - 44
4F15	GLOVEBOX, ARMREST, R.H.	90 - 56			
5D17	GRAIN LEAK KIT.....	120 - 58			
6F7	GRAIN TANK AND CURTAINS.....	130 - 30			
6F5	GRAIN TANK BASE.....	130 - 28			
6G9	GRAIN TANK CROSS AUGERS.....	130 - 56			
2E5	GRAIN TANK DUAL LEVEL MONITOR HARNESS AND UNLOADING AUGER LIGHT.....	40 - 64			
6F9	GRAIN TANK EXTENSIONS.....	130 - 32			
6G16	GRAIN TANK SAMPLING TROUGH.....	130 - 64			
6F3	GRAIN TANK TOP.....	130 - 26			

ALPHABETICAL INDEX - CONTINUED

GRID		PAGE	GRID		PAGE
4K3	HEADER DRIVE SHAFT - SH -	111 - 46	3G19	HOSES AND LINES, HYDRAULIC, HEADER LIFT	70 - 38
5F11	HEADER ELECTROMAGNETIC CLUTCH	121 - 20	3G7	HOSES AND LINES, HYDRAULIC, REEL DRIVE, FRONT	70 - 26
6G24	HEADER HEIGHT CONTROL VALVE	160 - 3	3F14	HOSES AND LINES, HYDRAULIC, REEL DRIVE, L.H. SIDE	70 - 4
6G23	HEADER HEIGHT CONTROL, DIAL-A-MATIC HYDRAULIC LINE AND VALVE BLOCK	160 - 2	3G13	HOSES AND LINES, HYDRAULIC, REEL FORE- AND-AFT, FRONT	70 - 32
3G24	HEADER HEIGHT CONTROL, DIAL-A-MATIC, VALVE BLOCK SOLENOID	70 - 45	3G9	HOSES AND LINES, HYDRAULIC, REEL PUMP	70 - 28
6H1	HEADER HEIGHT CONTROL, ELECTRIC HARNESS, DIAL-A-MATIC	160 - 4	3C13	HOSES AND LINES, OIL COOLER, HYDROSTATIC	51 - 28
3G23	HEADER LIFT CYLINDER, HYDRAULIC	70 - 43	3C3	HOSES AND LINES, OIL, HYDROSTATIC DRIVE, LOWER (SIDEHILL 2WD)	51 - 18
3G17	HEADER LIFT HYDRAULIC LINES AND HOSES	70 - 36	3C1	HOSES AND LINES, OIL, HYDROSTATIC DRIVE, LOWER (4 WHEEL DRIVE)	51 - 16
3G19	HEADER LIFT HYDRAULIC LINES AND HOSES	70 - 38	3C9	HOSES AND LINES, OIL, HYDROSTATIC DRIVE, LOWER (4 WHEEL DRIVE)	51 - 24
3H15	HEADER LIFT MODULE, SOLENOID CONTROL VALVE	70 - 62	3J22	HOSES AND LINES, OIL, LEVELING CYLINDER	70 - 122
2G23	HEADER LIFT SUPPORT (SIDEHILL)	50 - 16	3G11	HOSES AND LINES, REEL LIFT	70 - 30
1A9	HEADERS	10 - 8	3H7	HOSES AND LINES, RESERVOIR HYDRAULIC UPPER RETURN	70 - 52
1F8	HEAT EXCHANGER, FUEL	30 - 8	3E3	HOSES AND LINES, STEERING, FRONT	60 - 22
1D25	HEAT SHIELD, EXHAUST MANIFOLD	24 - 44	3E9	HOSES AND LINES, STEERING, REAR (DUAL CYLINDER)	60 - 28
2C10	HEATER AND AIR CONDITIONER SWITCH	40 - 23	3E11	HOSES AND LINES, STEERING, REAR (DUAL CYLINDER)	60 - 30
4E12	HEATER AND AIR CONDITIONING DUCTS	90 - 29	3I5	HOSES AND LINES, UNLOADING AUGER SWING HYDRAULIC CYLINDER	70 - 78
4G1	HEATER AND AIR CONDITIONING HOUSING AND FILTERS	90 - 68	3I13	HOSES AND LINES, WET CLUTCH OIL COOLER	70 - 86
4G14	HEATER SYSTEM	90 - 82	3C18	HOSES AND LINES, 4-WHEEL DRIVE (FLOW CONTROL VALVE/CAM LOBE MOTORS)	51 - 34
2C5	HEATER WIRING HARNESS	40 - 18	3C20	HOSES AND LINES, 4-WHEEL DRIVE (SH9500) (FLOW CONTROL VALVE/CAM LOBE MOTORS)	51 - 36
4G3	HEATER/AIR CONDITIONING AND PRESSURIZING FAN	90 - 70	1B18	HOSES AND RADIATOR	20 - 10
1C4	HEATER, COOLANT, ENGINE BLOCK	20 - 22	3I7	HOSES, GRAIN TANK UNLOADING DRIVE CYLINDER	70 - 80
4F3	HEIGHT ADJUSTER, CAB SEAT	90 - 44	3D21	HOSES, HYDRAULIC STEERING, UPPER AND ATTENUATOR	60 - 16
2G16	HIGH FLOATATION DRIVE WHEELS	50 - 8	3G21	HOSES, HYDRAULIC, CONTOUR MASTER (L.H.) (OPTIONAL)	70 - 40
2E14	HOLDDOWN, BATTERIES	40 - 73	1B24	HOSES, INTERCOOLER	20 - 16
4F21	HOLDER, CUP	90 - 62	6D23	HOSES, LUBE, L.H.	125 - 60
4C9	HOOD, REAR	80 - 26	6D21	HOSES, LUBE, R.H.	125 - 58
6G3	HORIZONTAL UNLOADING AUGER (14- AND 17-FT.)	130 - 50	3C5	HOSES, OIL, HYDROSTATIC DRIVE, LOWER (FOUR WHEEL DRIVE)	51 - 20
6G5	HORIZONTAL UNLOADING AUGER (17 FT. AND 20 FT.)	130 - 52	3C7	HOSES, OIL, HYDROSTATIC DRIVE, LOWER (TWO WHEEL DRIVE) (655201-)	51 - 22
6G12	HORIZONTAL UNLOADING AUGER DRIVE GEARCASE	130 - 59	3I12	HOSES, TILT CYLINDER - CONTOUR MASTER	70 - 85
6G1	HORIZONTAL UNLOADING AUGER HOUSING (EXPORT) (17 AND 20 FT.)	130 - 48	3C11	HOSES, UPPER, HYDROSTATIC DRIVE (FOUR WHEEL DRIVE)	51 - 26
6F21	HORIZONTAL UNLOADING AUGER HOUSING (14- AND 17-FT.)	130 - 44	6C17	HOSES, VALVE, PUMP AND LINES, CHAFF SPREADER	125 - 28
6F22	HORIZONTAL UNLOADING AUGER HOUSING (14- AND 17-FT.)	130 - 45	2H17	HOUSING AND BEARING CAP, FINAL DRIVE (RING AND PINION)	50 - 37
6F23	HORIZONTAL UNLOADING AUGER HOUSING (20 FT.)	130 - 46	2H18	HOUSING AND BEARING CAP, FINAL DRIVE (RING AND PINION) (SIDEHILL)	50 - 38
6F19	HORIZONTAL UNLOADING AUGER HUB SUPPORT AND SWITCH	130 - 42	4E11	HOUSING AND FILTER, AIR, CAB	90 - 28
6F15	HORIZONTAL UNLOADING AUGER SWIVEL	130 - 38	5H23	HOUSING AND KNIFEBANK, STRAW CHOPPER	121 - 76
2C19	HORN	40 - 32	6D12	HOUSING AND PADDLE ASSEMBLY, UPPER TAILINGS AUGER	125 - 48
3D23	HORN BUTTON	60 - 18	5D1	HOUSING AND SHOE GRAIN SUPPLY AUGERS	120 - 42
4F22	HORN BUTTON	90 - 64	5D3	HOUSING AND SHOE GRAIN SUPPLY AUGERS	120 - 44
4G10	HOSE, A/C COMPRESSOR	90 - 77	1E6	HOUSING CONNECTORS, FUEL INJECTION PUMP ..	24 - 50
3I24	HOSE, CHARGE PRESSURE	70 - 98	2H5	HOUSING COVER AND SHIFTER CAM TRANSMISSION AND DIFFERENTIAL	50 - 24
3J1	HOSE, CHARGE PRESSURE, SIDEHILL	70 - 100	4G1	HOUSING, AIR CONDITIONER/HEATER AND FILTERS	90 - 68
1C6	HOSE, CRANKCASE OIL DRAIN	20 - 24	6F13	HOUSING, CHARGE AND VERTICAL UNLOADING AUGER	130 - 36
1F6	HOSE, FUEL TANK	30 - 6			
3F20	HOSE, HYDRAULIC, VARIABLE DRIVE, FEEDER HOUSE	70 - 12			
6C19	HOSES AND LINES, CHAFF SPREADER (DUAL MOTOR)	125 - 30			
3C15	HOSES AND LINES, FOUR WHEEL DRIVE HYDRAU LIC, L.H. (655201-)	51 - 30			
3H10	HOSES AND LINES, HYDRAULIC PRESSURE	70 - 56			
3H12	HOSES AND LINES, HYDRAULIC, CYLINDER SPEED	70 - 58			
3G17	HOSES AND LINES, HYDRAULIC, HEADER LIFT	70 - 36			

ALPHABETICAL INDEX - CONTINUED

GRID		PAGE	GRID		PAGE
4G1	HOUSING, HEATER/AIR CONDITIONING AND FILTERS.....	90 - 68	3C24	HYDROSTATIC DRIVE MOTOR.....	51 - 40
6G1	HOUSING, HORIZONTAL UNLOADING AUGER (EXPORT) (17 AND 20 FT.).....	130 - 48	2I11	HYDROSTATIC DRIVE MOTOR (RING AND PINION).....	50 - 58
6F21	HOUSING, HORIZONTAL UNLOADING AUGER (14- AND 17-FT.).....	130 - 44	2I13	HYDROSTATIC DRIVE MOTOR, KIT (RING AND PINION).....	50 - 60
6F22	HOUSING, HORIZONTAL UNLOADING AUGER (14- AND 17-FT.).....	130 - 45	3C5	HYDROSTATIC DRIVE OIL LINES AND HOSES, LOWER (FOUR WHEEL DRIVE).....	51 - 20
6F23	HOUSING, HORIZONTAL UNLOADING AUGER (20 FT.).....	130 - 46	3C3	HYDROSTATIC DRIVE OIL LINES AND HOSES, LOWER (SIDEHILL 2WD).....	51 - 18
1D13	HOUSING, OIL FILTER.....	24 - 30	3C7	HYDROSTATIC DRIVE OIL LINES AND HOSES, LOWER (TWO WHEEL DRIVE)(655201-).....	51 - 22
3E23	HOUSING, REAR AXLE SPINDLE (FIXED AND ADJUSTABLE REAR AXLE).....	60 - 44	3C1	HYDROSTATIC DRIVE OIL LINES AND HOSES, LOWER (4 WHEEL DRIVE).....	51 - 16
1C24	HOUSING, REAR OIL SEAL.....	24 - 14	3C9	HYDROSTATIC DRIVE OIL LINES AND HOSES, LOWER (4 WHEEL DRIVE).....	51 - 24
3E24	HOUSING, SPINDLE, ADJUSTABLE REAR AXLE.....	60 - 45	2I6	HYDROSTATIC DRIVE PISTON ASSEMBLY (RING AND PINION).....	50 - 52
6D5	HOUSING, TAILINGS ELEVATOR.....	125 - 40	2I3	HYDROSTATIC DRIVE PUMP COVER (RING AND PINION).....	50 - 49
1D20	HOUSING, THERMOSTAT, FRONT.....	24 - 38	2I1	HYDROSTATIC DRIVE PUMP, COVER, SHAFT (RING AND PINION).....	50 - 46
2H1	HOUSING, TRANSMISSION AND DIFFERENTIAL SHIFTER FORKS.....	50 - 20	2I4	HYDROSTATIC DRIVE PUMP, HOUSING, SERVO CYLINDERS,SWASHPLATE (RING AND PINION)....	50 - 50
6E14	HOUSING, UPPER CLEAN GRAIN LOADING AUGER.....	130 - 12	2I14	HYDROSTATIC MOTOR VALVE (RING AND PINION).....	50 - 61
6E16	HOUSING, UPPER CLEAN GRAIN LOADING AUGER.....	130 - 14	3C13	HYDROSTATIC OIL COOLER LINES AND HOSES.....	51 - 28
6F19	HUB SUPPORT AND SWITCH, HORIZONTAL UNLOADING AUGER.....	130 - 42			
1B14	HUB, ENGINE FAN.....	20 - 6		I	
1C2	HUB, ENGINE TRANSMISSION COUPLING.....	20 - 20	6E23	IDLER AND ELEVATOR DRIVE TIGHTENER, CLEAN GRAIN.....	130 - 22
1E17	HUB, FAN PULLEY.....	24 - 62	1B14	IDLER ARM, ENGINE FAN.....	20 - 6
1C25	HUB, FLYWHEEL.....	24 - 15	1B10	IDLER ARMS, ROTARY SCREEN DRIVE.....	20 - 2
3E21	HUB, REAR AXLE SPINDLES.....	60 - 42	1E18	IDLER PULLEY, AIR CONDITIONER COMPRESSOR ..	24 - 63
3G6	HYDRAULIC FILTER, MAIN.....	70 - 24	4J7	IDLER SHAFT, DRUM AND CHAIN, FEEDER CONVEYOR, SIDEHILL.....	111 - 26
3F20	HYDRAULIC HOSE, VARIABLE DRIVE, FEEDER HOUSE.....	70 - 12	4J5	IDLER, FEEDER CONVEYOR.....	111 - 24
3G21	HYDRAULIC HOSES, CONTOUR MASTER (L.H.) (OPTIONAL).....	70 - 40	5C17	INDICATOR, CABLE AND BRACKETS, CONCAVE.....	120 - 32
3H12	HYDRAULIC LINES AND HOSES, CYLINDER SPEED.....	70 - 58	5C15	INDICATOR, CONCAVE AND SPIKE TOOTH.....	120 - 30
3G17	HYDRAULIC LINES AND HOSES, HEADER LIFT.....	70 - 36	5C19	INDICATOR, SPIKE TOOTH.....	120 - 34
3G19	HYDRAULIC LINES AND HOSES, HEADER LIFT.....	70 - 38	1E4	INJECTION PUMP GEAR.....	24 - 48
3C15	HYDRAULIC LINES AND HOSES, L.H., FOUR WHEEL DRIVE (655201-).....	51 - 30	1E4	INJECTION PUMP LUBE LINE.....	24 - 48
3G7	HYDRAULIC LINES AND HOSES, REEL DRIVE, FRONT.....	70 - 26	1E4	INJECTION PUMP, ELECTRONIC FUEL.....	24 - 48
3F14	HYDRAULIC LINES AND HOSES, REEL DRIVE, L.H. SIDE.....	70 - 4	2D23	INLET AIR TEMPERATURE SWITCH.....	40 - 57
3G9	HYDRAULIC LINES AND HOSES, REEL PUMP.....	70 - 28	2G22	INNER CASTING, PIVOT TUBE, FINAL DRIVE (SIDEHILL) (RING AND PINION).....	50 - 14
3I9	HYDRAULIC MOUNTING, UNLOADING AUGER SWING.....	70 - 82	3B13	INNER COVER.....	51 - 4
3H10	HYDRAULIC PRESSURE LINES AND HOSES.....	70 - 56	2H6	INPUT SHAFT, GEARS, LUBE PUMP AND BEARINGS, TRANSMISSION.....	50 - 26
3I1	HYDRAULIC PUMP, MAIN.....	70 - 74	1D3	INSERTS, VALVE SEAT.....	24 - 18
3D1	HYDRAULIC PUMP, MAIN CONNECTING HARDWARE HYDROSTATIC DRIVE PUMP.....	51 - 42	2B17	INSTRUMENT PANEL, CAB POST.....	40 - 6
3H5	HYDRAULIC RETURN LINES.....	70 - 50	4E13	INSTRUMENT PANEL, CAB POST.....	90 - 30
3D21	HYDRAULIC STEERING HOSES, UPPER AND ATTENUATOR.....	60 - 16	1D22	INTAKE MANIFOLD.....	24 - 40
3H7	HYDRAULIC UPPER RETURN LINES AND HOSES, RESERVOIR.....	70 - 52	1D22	INTAKE MANIFOLD GASKET.....	24 - 40
3H9	HYDRAULIC/HYDROSTATIC OIL RESERVOIR AND MOUNTINGS.....	70 - 54	4I1	INTAKE SHIELD.....	110 - 32
2G10	HYDRO HANDLE.....	50 - 2	1F10	INTAKE TUBES AND AIR CLEANER.....	30 - 10
2I7	HYDROSTATIC DRIVE CHARGE PUMP (RING AND PINION).....	50 - 53	1D3	INTAKE VALVES.....	24 - 18
2I8	HYDROSTATIC DRIVE CHARGE PUMP (RING AND PINION).....	50 - 54	1D10	INTAKE, ENGINE OIL PUMP.....	24 - 26
2G12	HYDROSTATIC DRIVE CONTROL CABLES.....	50 - 4	1B24	INTERCOOLER.....	20 - 16
2I9	HYDROSTATIC DRIVE DISPLACEMENT CONTROL VALVE (RING AND PINION).....	50 - 56	5G1	INTERMEDIATE SHAFT MOUNTING, CYLINDER DRIVE, DUAL-RANGE.....	121 - 34
3C11	HYDROSTATIC DRIVE HOSES, UPPER (FOUR WHEEL DRIVE).....	51 - 26	5G3	INTERMEDIATE SHEAVE, CYLINDER DRIVE, DUAL-RANGE.....	121 - 36