

HP8868

-UN-27JUL99



*JOHN DEERE 9450 SELF-PROPELLED COMBINE™ WITH 90 SERIES CORN HEAD*

*MANUFACTURED (1999- )*

*(SPECIFICATIONS AND DESIGN SUBJECT TO CHANGE WITHOUT NOTICE)*

*COPYRIGHT (C) 2000. DEERE & COMPANY. MOLINE, ILLINOIS, USA. ALL RIGHTS RESERVED.*

## NOTE

FOR 900 SERIES PLATFORM PARTS INFORMATION, REFER TO JOHN DEERE PARTS CATALOG - PC2104.

FOR 40 SERIES CORN HEAD PARTS INFORMATION, REFER TO JOHN DEERE PARTS CATALOG - PC1223.

FOR 50A SERIES ROW-CROP HEAD PARTS INFORMATION, REFER TO JOHN DEERE PARTS CATALOG - PC1747.

FOR THREE-ROLLER BELT PICKUP PARTS INFORMATION, REFER TO JOHN DEERE PARTS CATALOG - PC2210.

FOR 918 AND 920 DRAPER PARTS INFORMATION, REFER TO JOHN DEERE PARTS CATALOG - PC2212.

FOR 90 SERIES CORN HEAD PARTS INFORMATION, REFER TO JOHN DEERE PARTS CATALOG - PC2404.

FOR 900R & F SERIES PLATFORMS PARTS INFORMATION, REFER TO JOHN DEERE PARTS CATALOG - PC2771.

FOR 914P BELT PICKUP PARTS INFORMATION, REFER TO JOHN DEERE PARTS CATALOG - PC2772.

## IMPORTANT

THIS PARTS CATALOG CONTAINS PARTS INFORMATION FOR THE 9450 SELF-PROPELLED COMBINE. VINTAGE IS DETERMINED BY THE COMBINE SERIAL NUMBER OR THE PRODUCT IDENTIFICATION NUMBER (PIN). IT IS IMPORTANT THAT THE CORRECT NUMBERS BE USED WHEN ORDERING PARTS.

## PRODUCT INFORMATION NUMBER (PIN) PLATE

THE PRODUCT IDENTIFICATION NUMBER (PIN) PLATE IS LOCATED NEAR THE RIGHT-HAND SIDE OF THE TOOL BOX.  
AN EXAMPLE OF THE TWO-LINES ON THIS PIN PLATE IS:

HO9450X685000  
COMBINE

(FIRST LINE)

HO - MANUFACTURING UNIT (HARVESTER WORKS)

9450 - MODEL IDENTIFIER

X - CONFIGURATION CODE/MODEL IDENTIFIER SUFFIX

900000 - SEQUENTIAL NUMBER USED IN SERIAL NO. COLUMN

(SECOND LINE)

COMBINE - TYPE OF PRODUCT

## PARTS LISTING INFORMATION

SERIAL NUMBER OR PRODUCT IDENTIFICATION NUMBER (PIN) INFORMATION SHOWS ON WHICH MACHINES THE PART MAY BE USED; FOR EXAMPLE:

- THE PART CAN BE USED ON ALL MACHINES.
- 000000 THE PART CAN BE USED ON ALL MACHINES UP TO AND INCLUDING THE SERIAL NUMBER LISTED.
- 000000- THE PART CAN BE USED ON ALL MACHINES BEGINNING WITH THE SERIAL NUMBER LISTED.
- 000000-000000 THE PART CAN BE USED ON ALL MACHINES BETWEEN AND INCLUDING SERIAL NUMBERS LISTED.

WHEN XXXXXX'S ARE LISTED IN PLACE OF A SERIAL NUMBER, A SERIAL NUMBER CHANGE WAS MADE, BUT THE EXACT SERIAL NUMBER WAS NOT AVAILABLE WHEN THE CATALOG WAS PRINTED.

RGP3513 -UN-01JAN94



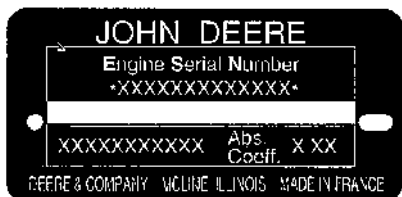
RGP3513

## ENGINE SERIAL NUMBER PLATE

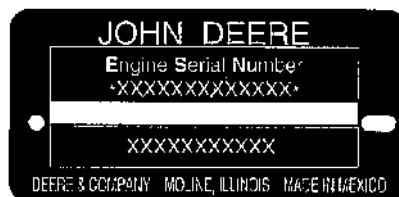
TP58281 -UN-26JAN98



DUBUQUE OPTION



SARAN OPTION



TORREON OPTION

TP58281

- |  |                                   |
|--|-----------------------------------|
| 1. DESIGNATES ENGINE MANUFACTURER            | T-JOHN DEERE DUBUQUE WORKS        |
| 2. DESIGNATES NUMBER OF CYLINDERS AND LITERS | 6068 (6.8 LITER)                  |
| 3. DESIGNATES FUEL TYPE OR SPECIAL CONDITION | DF NON-TURBOCHARGED DIESEL ENGINE |
| 4. DESIGNATES ENGINE SERIAL NUMBER           | TF TURBOCHARGED DIESEL ENGINE     |
| 5. DESIGNATES THE ENGINE APPLICATION         | 123456                            |
|  | 6068HH052                         |

(SPECIFICATIONS AND DESIGN SUBJECT TO CHANGE WITHOUT NOTICE)

## **DIRECTION ARROW**

ARROWS ARE USED WITH ILLUSTRATIONS TO INDICATE THE FRONT OF THE UNIT. "RIGHT-HAND" AND "LEFT-HAND" SIDES ARE DETERMINED BY FACING IN THE DIRECTION OF MACHINE FORWARD TRAVEL.

## **BOX-ENCLOSED ILLUSTRATIONS**

A KEY NUMBER, SHOWN IN THE PARTS LIST, IS ASSIGNED TO A BOX ENCLOSING ALL PARTS SOLD AS A SERVICE ASSEMBLY. A BOX NOT KEYED INCLUDES NON-CURRENT PARTS.

## **KITS**

KIT INFORMATION WILL BE FOUND IMMEDIATELY FOLLOWING THE STORY IN WHICH IT IS USED. THE ILLUSTRATION IS REPEATED WITH ONLY THE KIT PARTS CALLED OUT AND WITH ALL OTHER PARTS SHOWN IN PHANTOM.

## **JDM REMANUFACTURED COMPONENTS**

THE SERVICE PARTS LISTED IN THIS CATALOG ARE INTENDED FOR THE REPAIR OF ORIGINAL EQUIPMENT COMPONENTS. ALTHOUGH MOST SERVICE PARTS MAY BE USED TO REPAIR REMANUFACTURED COMPONENTS, THE REMANUFACTURED DESIGN MAY CHANGE PARTS SUFFICIENTLY SO THAT SERVICE PARTS ARE INADEQUATE OR NOT USABLE.

## **BOLT AND CAP SCREW STRENGTH IDENTIFICATION**

BOLTS AND CAP SCREWS REQUIRED TO HAVE HIGH-STRENGTH QUALITIES EQUIVALENT TO SAE GRADE 8 ARE IDENTIFIED THROUGHOUT THIS CATALOG BY THE DESCRIPTION HS SAE 8. ALL STANDARD BOLTS AND CAP SCREWS ARE SAE GRADE 5 OR LOWER. BOLTS AND CAP SCREWS REQUIRED TO HAVE HIGH-STRENGTH QUALITIES EQUIVALENT TO PROPERTY CLASS 10.9 ARE IDENTIFIED THROUGHOUT THIS CATALOG BY THE DESCRIPTION 10.9. ALL STANDARD BOLTS AND CAP SCREWS ARE PROPERTY CLASS 8.8 OR LOWER.

## **SI UNITS OF MEASURE**

METRIC DIMENSIONS ARE GIVEN, WHERE APPLICABLE, THROUGHOUT THIS PARTS CATALOG.

## TRADEMARKS

THROUGHOUT THIS PARTS CATALOG, YOU WILL FIND THE FOLLOWING DEERE & COMPANY TRADEMARKS:

DIAL-A-SPEED™  
DIAL-A-MATIC™  
HARVESTRAK™  
CONTOUR MASTER™

POSI-TORQ™  
TORQ-GARD SUPREME®  
QUIK-TATCH™

## CHANGE INDICATOR LINE

CHANGES AFFECTING THE ORDERING OF PARTS ARE IDENTIFIED BY VERTICAL LINES MARKED IN THE LEFT-HAND MARGIN OF REVISED PARTS LISTING IMAGES. A LINE IS ALSO AT THE LEFT-HAND EDGE OF THE SAME PART NUMBER IN THE NUMERICAL INDEX TO SHOW THE LOCATION OF REVISED INFORMATION.

## FUNCTION CODE

(EXAMPLE - FC: 5000)

FUNCTION CODES ARE LOCATED ON EACH PAGE IN THE UPPER RIGHT-HAND CORNER IN THE BOX. THE CODE LISTED IS A GROUPING CODE THAT CAN BE USED FOR WARRANTIES AND FOR DTAC TO IDENTIFY CERTAIN AREAS.

## COMPLETE GOODS LISTINGS

COMPLETE GOODS ARE IN BOLD FACE TYPE. ORDER SEPARATELY. DO NOT INCLUDE ON REPLACEMENT PARTS ORDER.

MEMORANDA



SECTION INDEX

SECTION 10 - GENERAL INFORMATION

SECTION 20 - ENGINE ACCESSORIES

SECTION 25 - ENGINE

SECTION 30 - FUEL AND AIR

SECTION 40 - ELECTRICAL

SECTION 50 - POWER TRAIN

SECTION 60 - STEERING AND BRAKES

SECTION 70 - HYDRAULICS

SECTION 80 - BODY AND SHIELDS

SECTION 90 - OPERATOR'S STATION

SECTION 95 - AIR CONDITIONING AND HEATING

SECTION 100 - FEEDER HOUSE

SECTION 110 - THRESHING AND SEPARATION

SECTION 120 - CLEANING SHOE

SECTION 125 - ELEVATORS

SECTION 130 - RESIDUE DISPOSAL

SECTION 140 - DRIVES

SECTION 150 - GRAIN TANK AND UNLOADING AUGER

SECTION 155 - GREENSTAR YIELD MAPPING AND MONITOR SYSTEMS

SECTION 170 - DECALS

SECTION 180 - NUMERICAL INDEX

## ALPHABETICAL INDEX

GRID		PAGE	GRID		PAGE
	A				
2J11	A/C COMPRESSOR MANIFOLD.....	95 - 11	4B21	AUGER HUB SUPPORT .....	150 - 20
2J11	A/C COMPRESSOR R134A .....	95 - 11	4B13	AUGER SWING CYLINDER, HOSES AND LINES .....	150 - 12
1C22	ACCESS COVER, INJECTION PUMP GEAR .....	25 - 16	4B19	AUGER SWIVEL SUPPORT AND BRACES .....	150 - 18
1B9	ACCESS DOOR, RADIATOR .....	20 - 8	3F19	AUGER TROUGH, LOWER TAILINGS.....	125 - 18
2I13	ACCESSORIES, OVERHEAD CONSOLE .....	90 - 38	4B11	AUGER, GRAIN TANK, VERTICAL UNLOADING .....	150 - 10
2I5	ACCESSORIES, STEERING COLUMN .....	90 - 30	4C3	AUGER, HORIZONTAL UNLOADING.....	150 - 26
2D22	ACCUMULATOR PRESSURE GAUGE.....	70 - 36	4B17	AUGER, HORIZONTAL UNLOADING, SWIVEL.....	150 - 16
2D18	ACCUMULATOR, MOUNTING BRACKET, ONE HALF GALLON.....	70 - 32	3F11	AUGER, LOADING, CLEAN GRAIN .....	125 - 10
2D20	ACCUMULATOR, MOUNTING, BRACKET ONE GALLON .....	70 - 34	3F5	AUGER, LOWER CLEAN GRAIN .....	125 - 4
2D20	ACCUMULATOR, ONE GALLON .....	70 - 34	3G1	AUGER, LOWER TAILINGS .....	125 - 24
2D18	ACCUMULATOR, ONE HALF GALLON .....	70 - 32	3G3	AUGER, LOWER TAILINGS DRIVE TIGHTENER .....	125 - 26
1I6	ADJUSTABLE REAR AXLE.....	50 - 3	3J7	AUGER, UPPER TAILINGS.....	140 - 54
2C8	ADJUSTABLE REAR AXLE STEERING TIE RODS .....	60 - 32	4C7	AUGERS, GRAIN TANK CROSS .....	150 - 30
1H5	ADJUSTING MOTOR, CONCAVE.....	40 - 67	3E3	AUGERS, SHOE GRAIN SUPPLY AND HOUSING.....	120 - 2
1H10	ADJUSTING MOTOR, SEPARATOR FAN DRIVE .....	40 - 72	1I7	AXLE SPACERS .....	50 - 4
1C5	AFTERCOOLER AND INTAKE MANIFOLD SENSOR....	20 - 30	1I8	AXLE SPACERS .....	50 - 5
1E15	AIR CLEANER AND INTAKE TUBES.....	30 - 16	1I4	AXLE SUPPORT, REAR .....	50 - 1
2J14	AIR CONDITIONER COMPRESSOR HARDWARE .....	95 - 14	1I24	AXLE, FINAL DRIVE, SINGLE REDUCTION .....	50 - 23
2J12	AIR CONDITIONER COMPRESSOR HOSE .....	95 - 12	1I6	AXLE, REAR, ADJUSTABLE.....	50 - 3
2J7	AIR CONDITIONING AND HEATER DUCTS .....	95 - 7	2C6	AXLE, REAR, SPINDLES (HEAVY DUTY).....	60 - 30
2J4	AIR CONDITIONING AND HEATER HOUSING, LOWER .....	95 - 4	2C4	AXLE, REAR, SPINDLES (REGULAR DUTY) .....	60 - 28
1B20	AIR CONDITIONING COMPRESSOR BRACKET .....	20 - 20		B	
2C20	AIR CONDITIONING CONDENSER AND OIL COOLER .....	70 - 8	1H1	BACKSHAFT SPEED SENSOR, FEEDER HOUSE .....	40 - 62
2J8	AIR CONDITIONING SYSTEM & WATER VALVE.....	95 - 8	2I9	BALL JOINT, GEARSHIFT .....	90 - 34
2J10	AIR CONDITIONING SYSTEM - EVAPORATOR.....	95 - 10	4B5	BASE, GRAIN TANK .....	150 - 4
2J9	AIR CONDITIONING SYSTEM - RECEIVER-DRYER .....	95 - 9	1H13	BATTERIES AND CABLES .....	40 - 76
1G3	AIR CONDITIONING WIRING HARNESS .....	40 - 36	3D21	BEARING KIT, STRAW WALKERS .....	110 - 26
2J5	AIR CONDITIONING, HEATER HOUSING, LOWER .....	95 - 5	1C18	BEARING, CRANKSHAFT THRUST .....	25 - 12
2J2	AIR CONDITIONING, HEATER HOUSING, UPPER .....	95 - 2	3B5	BEARING, REVERSER GEAR BOX.....	100 - 4
1C1	AIR COOLER .....	20 - 26	1J13	BEARINGS, CAM LOBE MOTOR .....	50 - 38
2J4	AIR DUCT, HEATER AND AIR CONDITIONER.....	95 - 4	1C17	BEARINGS, CONNECTING ROD .....	25 - 11
2J2	AIR DUCT, INTAKE, HEATER AND AIR CONDITIONER.....	95 - 2	1I23	BEARINGS, FINAL DRIVE .....	50 - 22
1B7	AIR DUCT, RADIATOR SHELL.....	20 - 6	1B3	BEARINGS, IDLER ARM, ROTARY SCREEN .....	20 - 2
1B5	AIR DUCT, ROTARY SCREEN.....	20 - 4	1C18	BEARINGS, MAIN .....	25 - 12
1D18	AIR INTAKE MANIFOLD .....	25 - 38	3F24	BEARINGS, TAILINGS ELEVATOR CONVEYOR .....	125 - 23
2H18	AIR SEAT SUSPENSION .....	90 - 18	1I16	BEARINGS, TRANSMISSION .....	50 - 14
2H20	AIR SEAT SWITCH, OPERATOR'S .....	90 - 20	1I18	BEARINGS, TRANSMISSION PINION SHAFT.....	50 - 16
2H18	AIR SUSPENSION, SEAT.....	90 - 18	3I18	BEATER DRIVE SHEAVES AND TIGHTENER .....	140 - 40
1G23	ALTERNATOR MOUNTING BRACKET .....	40 - 59	3D16	BEATER GRATE CURTAIN .....	110 - 21
1G21	ALTERNATOR, SHEAVE AND BELT, (185 AMP) .....	40 - 56	3D17	BEATER, SHAFT AND DRIVE BELT .....	110 - 22
1G19	ALTERNATOR, SHEAVE AND BELT, (95 AMP) .....	40 - 54	4C14	BELT GUIDE, UNLOADING AUGER DRIVE .....	150 - 38
2I15	ANTENNA, SPEAKERS AND RADIO .....	90 - 40	2E3	BELT PICKUP / REEL DRIVE, AND SHEAVE.....	70 - 42
3I3	ARM, DUAL RANGE LOCKOUT.....	140 - 25	4E7	BELT ROUTINGS REFERENCE, R.H. ....	170 - 26
1B3	ARM, IDLER.....	20 - 2	1G21	BELT, ALTERNATOR (185 AMP) .....	40 - 56
1B3	ARM, PITMAN, ROTARY SCREEN DRIVE .....	20 - 2	1G19	BELT, ALTERNATOR (95AMP).....	40 - 54
1D3	ARM, ROCKER .....	25 - 22	3I18	BELT, BEATER DRIVE AND TIGHTENER.....	140 - 40
2H23	ARMREST PANEL, OPERATOR'S .....	90 - 24	3D17	BELT, BEATER SHAFT .....	110 - 22
2I1	ARMREST PANEL, OPERATOR'S .....	90 - 26	3J1	BELT, CHOPPER DRIVES (FRONT) .....	140 - 48
1F23	ARMREST WIRING HARNESS.....	40 - 32	3J10	BELT, CLEAN GRAIN ELEVATOR DRIVE TIGHTENER.....	140 - 58
2H20	ARMREST, OPERATOR'S.....	90 - 20	1B13	BELT, COOLING FAN .....	20 - 12
3E11	ARMS, FRAME, PRECLEANER CHAFFER .....	120 - 10	3C20	BELT, DRIVE SHAFT FRONT (FIXED SPEED WITH REVERSER) .....	100 - 44
1J20	ARMS, STEERING, CAM LOBE MOTOR.....	50 - 47	3I1	BELT, DUAL RANGE CYLINDER DRIVE.....	140 - 22
2H12	ASHTRAY.....	90 - 12	3I8	BELT, DUAL RANGE CYLINDER DRIVE, INTERMEDIATE SHEAVE.....	140 - 30
2B17	ATTENUATOR, HYDRAULIC STEERING.....	60 - 16	3H22	BELT, ELECTROMAGNETIC CLUTCH.....	140 - 17
4C12	AUGER COUNTERSHAFT DRIVE (UNLOADING).....	150 - 36	1C4	BELT, ENGINE FITTINGS.....	20 - 29
4C9	AUGER COVERS AND CHANNEL, CROSS .....	150 - 32	1B17	BELT, FAN IDLER PULLEY .....	20 - 16
4C14	AUGER DRIVE BELT GUIDE, UNLOADING .....	150 - 38	3C7	BELT, FEEDER CONVEYOR .....	100 - 30
4B23	AUGER HOUSING, HORIZONTAL UNLOADING.....	150 - 22	3B11	BELT, FEEDER HOUSE DRIVE TIGHTENER .....	100 - 10
3F9	AUGER HOUSING, LOADING, UPPER CLEAN GRAIN .....	125 - 8	3B7	BELT, FEEDER HOUSE DRIVE TIGHTENER (FIXED SPEED).....	100 - 6
			3G1	BELT, LOWER TAILINGS AUGER .....	125 - 24

## ALPHABETICAL INDEX - CONTINUED

GRID		PAGE	GRID		PAGE
3G3	BELT, LOWER TAILINGS AUGER TIGHTENER .....	125 - 26	1H18	BULB, REAR TURN AND TAIL LIGHT .....	40 - 81
2H20	BELT, OPERATOR'S SEAT .....	90 - 20	1H17	BULB, REAR TURN SIGNAL (AMBER) .....	40 - 80
2H22	BELT, PASSENGER'S SEAT .....	90 - 22	1H19	BULB, SIDE FINDER .....	40 - 82
1B3	BELT, ROTARY SCREEN DRIVE .....	20 - 2	2I5	BULB, STEERING COLUMN PANEL .....	90 - 30
4E11	BELT, ROUTING REFERENCE, L.H. ....	170 - 30	1H20	BULB, TRANSPORT WARNING LIGHTS .....	40 - 83
4E13	BELT, ROUTING REFERENCE, L.H. ....	170 - 32			
4E9	BELT, ROUTING REFERENCE, R.H. ....	170 - 28		C	
3H23	BELT, SECONDARY COUNTERSHAFT .....	140 - 18			
3I12	BELT, SECONDARY COUNTERSHAFT DRIVE .....	140 - 34	2J6	CAB AIR FILTER AND HOUSING .....	95 - 6
3I20	BELT, SEPARATOR FAN DRIVE .....	140 - 42	2H12	CAB DOOR AND WINDOW .....	90 - 12
3H25	BELT, SINGLE RANGE CYLINDER DRIVE .....	140 - 21	2H14	CAB DOOR LATCH .....	90 - 14
3D23	BELT, STRAW WALKER AND SPREADER .....	110 - 28	2H8	CAB INTERIOR TRIM PANELS .....	90 - 8
3I16	BELT, STRAW WALKER, CONVEYOR AUGERS, SIEVE AND CHAFFER DRIVE .....	140 - 38	2I20	CAB LANDING AND MIRROR (L.H.) .....	90 - 46
4C12	BELT, UNLOADING AUGER COUNTERSHAFT .....	150 - 36	2I22	CAB LANDING AND MIRROR (R.H.) .....	90 - 48
4C7	BELT, UNLOADING AUGERS .....	150 - 30	2H20	CAB OPERATOR'S SEAT AND BACKREST .....	90 - 20
3C18	BELT, UPPER DRIVE SHAFT (FIXED SPEED WITH REVERSER) .....	100 - 42	2H6	CAB REAR AND SIDE SEALS .....	90 - 6
3C10	BELT, UPPER, VARIABLE DRIVE COUNTERSHAFT .....	100 - 34	2H10	CAB ROOF .....	90 - 10
3B3	BELT, VARIABLE SPEED FEEDERHOUSE .....	100 - 2	1H14	CAB ROOF LIGHTS .....	40 - 77
3B9	BELT, VARIABLE SPEED TIGHTENER DRIVE .....	100 - 8	2H3	CAB SUPPORT .....	90 - 2
3J3	BELTS, STRAW CHOPPER DRIVES .....	140 - 50	1F21	CAB, MAIN WIRING HARNESS .....	40 - 30
1G7	BLADE, WIPER .....	40 - 40	2B13	CABLE, BRAKE .....	60 - 12
3G11	BLADES, TRI-ROD CHOPPER .....	130 - 4	4D5	CABLE, DATASTORE/COMPUTER .....	155 - 14
1C10	BLOCK, CYLINDER .....	25 - 4	1F3	CABLE, WIRING .....	40 - 8
1B22	BLOCK, ENGINE COOLANT HEATER .....	20 - 22	1H13	CABLES, BATTERY .....	40 - 76
1C12	BLOCK, ENGINE SHORT .....	25 - 6	1J1	CABLES, HYDROSTATIC DRIVE CONTROL .....	50 - 24
1G21	BOSCH ALTERNATOR, (185 AMP) .....	40 - 56	1J13	CAM LOBE MOTOR .....	50 - 38
1G19	BOSCH ALTERNATOR, (95 AMP) .....	40 - 54	1J17	CAM, CARRIER AND PISTON .....	50 - 43
2G22	BOX, TOOL .....	80 - 40	3D13	CAM, SPIKE TOOTH CONCAVE .....	110 - 18
2D18	BRACKET, ACCUMULATOR MOUNTING .....	70 - 32	1I15	CAM, TRANSMISSION SHIFTER .....	50 - 12
3I10	BRACKET, ADJUSTING, CYLINDER DRIVE, DUAL-RANGE .....	140 - 32	1C25	CAMSHAFT .....	25 - 19
1B20	BRACKET, AIR CONDITIONING COMPRESSOR .....	20 - 20	1D3	CAMSHAFT FOLLOWERS .....	25 - 22
1G23	BRACKET, ALTERNATOR MOUNTING .....	40 - 59	1C25	CAMSHAFT GEAR .....	25 - 19
2B12	BRACKET, BRAKE CABLE SUPPORT .....	60 - 11	1D12	CAP, ENGINE OIL FILL .....	25 - 32
4C19	BRACKET, DISPLAY, YIELD MAPPING .....	155 - 4	1E17	CAP, EXHAUST PIPE .....	30 - 18
3C4	BRACKET, FEEDER CONVEYOR .....	100 - 27	4B9	CAP, GRAIN TANK CLEAN OUT CHUTE .....	150 - 8
4C21	BRACKET, MASS FLOW SENSOR YIELD MAPPING .....	155 - 6	1C10	CAP, MAIN BEARING .....	25 - 4
4C23	BRACKET, MOISTURE SENSOR, YIELD MAPPING .....	155 - 8	1B11	CAP, RADIATOR .....	20 - 10
4C17	BRACKET, POSITION RECEIVER, YIELD MAPPING .....	155 - 2	1J18	CAPS, YOKE AND PIVOTS (STEERABLE MOTOR) ....	50 - 44
4C21	BRACKET, TRANSDUCER MOUNTING YIELD MAPPING .....	155 - 6	1J17	CARRIER, PISTON, AND CAM .....	50 - 43
1H12	BRACKETS, LOW SHAFT SPEED SENSORS .....	40 - 75	1K11	CASE DRAIN, HYDRAULIC LINES 4-WHEEL DRIVE .....	50 - 62
1B9	BRACKETS, RADITOR MOUNTING .....	20 - 8	1G14	CENTRAL ELECTRONICS MODULE AND CIRCUIT BOARDS .....	40 - 48
2C24	BRACKETS, SOLENOID CONTROL VALVE .....	70 - 13	2E24	CHAFF SPREADER CONTROL, CHECK VALVE .....	70 - 64
2B12	BRAKE CABLE SUPPORT BRACKET .....	60 - 11	3G24	CHAFF SPREADER DISC .....	130 - 18
2B7	BRAKE LINES, MASTER CYLINDER AND RESERVOIR .....	60 - 6	2F1	CHAFF SPREADER LINES AND FITTINGS .....	70 - 66
2B9	BRAKE MASTER CYLINDER .....	60 - 8	3H5	CHAFF SPREADER MOUNTING SUPPORT .....	130 - 24
2B3	BRAKE PEDAL AND SEAL, PARKING .....	60 - 2	3H3	CHAFF SPREADER PAN AND SEALS .....	130 - 22
2B5	BRAKE PEDALS AND MASTER CYLINDER .....	60 - 4	2E1	CHAFF SPREADER PUMP .....	70 - 40
2B13	BRAKE SHOES AND DRUM .....	60 - 12	3H1	CHAFF SPREADER SHIELDS AND HANDLES .....	130 - 20
2B11	BRAKE SLAVE CYLINDER .....	60 - 10	2F5	CHAFF SPREADER, HOSES AND, LINES .....	70 - 70
1B5	BRUSH, ROTARY SCREEN DOOR .....	20 - 4	2F3	CHAFF SPREADER, HOSES, VALVE AND PUMP .....	70 - 68
2H3	BULB, CAB STUBBLE LAMP .....	90 - 2	3E13	CHAFFER ELEMENT .....	120 - 12
2I11	BULB, CORNERPOST DISPLAY .....	90 - 36	3E15	CHAFFER EXTENSION ELEMENT .....	120 - 14
2H10	BULB, DOME LIGHT, CAB .....	90 - 10	3E17	CHAFFER FRAME .....	120 - 16
2G20	BULB, ENGINE ACCESS PLATFORM LAMP .....	80 - 38	3E11	CHAFFER FRAME ARMS, PRECLEANER .....	120 - 10
2G16	BULB, ENGINE SERVICE LAMP .....	80 - 34	3E9	CHAFFER FRAME, PRE-CLEANER .....	120 - 8
1H15	BULB, FRONT TURN SIGNAL (AMBER) .....	40 - 78	3E7	CHAFFER, PRECLEANING .....	120 - 6
2G5	BULB, GULLWING DOOR, R.H. ....	80 - 22	3J9	CHAIN TIGHTENER, UPPER TAILINGS DRIVE .....	140 - 57
2F21	BULB, GULLWING SERVICE DOOR, L.H. ....	80 - 14	2I17	CHAIN, CAB PLATFORM SAFETY .....	90 - 42
2G7	BULB, RADIATOR DOOR .....	80 - 24	3F7	CHAIN, CONVEYOR, CLEAN GRAIN LOWER ELEVATOR .....	125 - 6
2G1	BULB, REAR CORNER PANEL .....	80 - 18	3C3	CHAIN, DRUM AND FEEDER CONVEYOR IDLER SHAFT .....	100 - 26
			3C7	CHAIN, FEEDER CONVEYOR .....	100 - 30
			3C4	CHAIN, FEEDER CONVEYOR DRIVE .....	100 - 27

## ALPHABETICAL INDEX - CONTINUED

GRID		PAGE	GRID		PAGE
4E7	CHAIN, LINK, FEEDER CONVEYOR, R.H.	170-26	2I1	CONTROL PANEL, OPERATOR'S ARMREST	90-26
3G1	CHAIN, LOWER TAILINGS AUGER	125-24	1G18	CONTROL UNIT, ELECTRONIC (ECU)	40-52
3J7	CHAIN, ROLLER, UPPER TAILINGS AUGER	140-54	1J21	CONTROL VALVE	50-48
3F24	CHAIN, TAILINGS ELEVATOR CONVEYOR	125-23	2D1	CONTROL VALVE MODULE, SIX STACK SOLENOID	70-14
3G5	CHAIN, UPPER TAILINGS AUGER	125-28	1J22	CONTROL VALVE SOLENOID (4-WHEEL DRIVE)	50-49
4C9	CHANNEL, CROSS AUGER	150-32	1J8	CONTROL VALVE, HYDROSTATIC DRIVE DISPLACEMENT	50-32
4B11	CHARGE HOUSING, VERTICAL UNLOADING AUGER	150-10	2D14	CONTROL VALVE, SOLENOID, AUGER SWING	70-28
1J7	CHARGE PUMP, HYDROSTATIC	50-31	2D14	CONTROL VALVE, SOLENOID, REEL FORE/AFT	70-28
2E24	CHECK VALVE, CHAFF SPREADER CONTROL	70-64	2E24	CONTROL, CHAFF SPREADER	70-64
3G8	CHOPPER DOOR	130-1	1F6	CONVENIENCE OUTLET KIT	40-12
3J1	CHOPPER DRIVES (FRONT)	140-48	2E17	CONVERSION KIT, REEL FORE AND AFT	70-56
3G13	CHOPPER HOUSING AND KNIFEBANK	130-6	3I16	CONVEYOR AUGERS, STRAW WALKER, SIEVE AND CHAFFER DRIVE	140-38
3G15	CHOPPER TRANSPORT SPROCKETS	130-8	3F7	CONVEYOR CHAIN, CLEAN GRAIN	125-6
3G11	CHOPPER, TRI-ROD	130-4	3C3	CONVEYOR, FEEDER HOUSE	100-26
4B9	CHUTE, GRAIN TANK CLEAN OUT	150-8	1C9	COOLANT CONDITIONER, ENGINE	25-2
2H23	CIRCUIT BOARD, ARMREST	90-24	1B22	COOLANT HEATER, ENGINE BLOCK	20-22
1G14	CIRCUIT BOARD, ELECTRONICS MODULE	40-48	1B11	COOLANT RECOVERY TANK	20-10
2I13	CIRCUIT BOARD, OVERHEAD CONSOLE	90-38	1C9	COOLANT SCAN TEST KIT	25-2
1G16	CIRCUIT BREAKER, RELAY PANEL	40-50	1B13	COOLING FAN BELT	20-12
3F7	CLEAN GRAIN CONVEYOR CHAIN	125-6	3G17	CORN DEFLECTOR	130-11
3J10	CLEAN GRAIN ELEVATOR DRIVE TIGHTENER	140-58	2G1	CORNER PANEL, REAR, L H	80-18
3F13	CLEAN GRAIN ELEVATOR GEARCASE	125-12	2I11	CORNERPOST DISPLAY PANEL, R.H.	90-36
3F3	CLEAN GRAIN ELEVATOR SHAFT, UPPER, SPROCKET AND SHEAVE	125-2	3H23	COUNTERSHAFT AND VARIABLE SHEAVE	140-18
3F11	CLEAN GRAIN LOADING AUGER	125-10	3I12	COUNTERSHAFT DRIVE, SECONDARY	140-34
3F9	CLEAN GRAIN LOADING AUGER HOUSING, UPPER	125-8	4C12	COUNTERSHAFT DRIVE, UNLOADING AUGER	150-36
3F5	CLEAN GRAIN LOWER AUGER AND HINGED DOOR	125-4	3H20	COUNTERSHAFT, PRIMARY GEARCASE	140-14
3F7	CLEAN GRAIN LOWER CONVEYOR CHAIN	125-6	3H18	COUNTERSHAFT, PRIMARY, SEPARATOR	140-12
4B9	CLEAN OUT CHUTE, GRAIN TANK	150-8	1B18	COUPLING WITH HUB, ENGINE-TRANSMISSION	20-17
1E15	CLEANER, AIR AND INTAKE	30-16	1I8	COUPLINGS, AXLE	50-5
3E5	CLEANING FAN INTAKE SHIELDS	120-4	1C22	COVER, ACCESS, INJECTION PUMP GEAR	25-16
1H21	CLEANING SHOE INSPECTION LIGHT	40-84	1E13	COVER, ENGINE	30-14
3E2	CLEANOUT DOOR, SUPPLY AUGER	120-1	2G16	COVER, ENGINE COMPARTMENT	80-34
2J13	CLUTCH, COMPRESSOR	95-13	1J3	COVER, HYDROSTATIC PUMP	50-26
3B23	CLUTCH, FEEDER HOUSE UPPER SHAFT	100-22	1J15	COVER, INNER - CAM LOBE MOTOR	50-40
3H22	CLUTCH, HEADER ELECTROMAGNETIC	140-17	4C23	COVER, MOISTURE SENSOR, YIELD MAPPING	155-8
3H14	CLUTCH, MAIN GEARCASE	140-8	1D12	COVER, OIL FILLER OPENING	25-32
3G1	CLUTCH, SLIP, LOWER TAILINGS AUGER	125-24	4C17	COVER, POSITION RECEIVER, YIELD MAPPING	155-2
3I16	CLUTCH, SLIP, STRAW WALKER, CONVEYOR AUGERS	140-38	1D4	COVER, ROCKER ARM	25-23
1E10	COLD WEATHER STARTING AID	30-11	1B19	COVER, STARTER RELAY	20-18
2J14	COMPRESSOR HARDWARE KIT	95-14	1D16	COVER, THERMOSTAT	25-36
2J15	COMPRESSOR PARTS (650301- )	95-15	3C23	COVER, THRESHING CYLINDER	110-2
2J12	COMPRESSOR, AIR CONDITIONER, HOSE	95-12	1C22	COVER, TIMING GEAR	25-16
2J11	COMPRESSOR, AIR CONDITIONING, R134A	95-11	4C9	COVERS AND CHANNEL, CROSS AUGER	150-32
2J13	COMPRESSOR, CLUTCH	95-13	4D1	COVERS, MOISTURE SENSOR, YIELD MAPPING	155-10
1H5	CONCAVE ADJUSTING MOTOR	40-67	4D1	COVERS, WHEN MOISTURE SENSOR IS NOT USED YIELD MAPPING	155-10
3D11	CONCAVE ASSEMBLY AND BEATER GRATE	110-16	1B24	CRANKCASE, ENGINE OIL DRAIN	20-24
1H6	CONCAVE INDICATOR	40-68	3D23	CRANKS, STRAW WALKER AND DRIVE	110-28
3D13	CONCAVE, SPIKE-TOOTH	110-18	1C18	CRANKSHAFT	25-12
2C20	CONDENSER, A/C AND OIL COOLER	70-8	1C19	CRANKSHAFT DAMPENERS AND PULLEY	25-13
1C9	CONDITIONER, COOLANT	25-2	1C21	CRANKSHAFT REAR OIL SEAL	25-15
1C17	CONNECTING ROD	25-11	1C18	CRANKSHAFT THRUST BEARING	25-12
1E22	CONNECTORS, ELECTRICAL, WEATHERPACK	40-2	3D23	CRANKSHAFT, STRAW WALKER	110-28
1E8	CONNECTORS, STARTING AID	30-9	4C5	CROSS AUGER BEARING PLATE, L.H.	150-28
1F5	CONNECTORS, SUPPLEMENTARY TERMINALS	40-10	4C9	CROSS AUGER COVERS AND CHANNEL	150-32
2I13	CONSOLE, OVERHEAD	90-38	4C7	CROSS AUGERS, GRAIN TANK	150-30
2H8	CONTAINER, TRASH	90-8	3D16	CURTAIN, BEATER GRATE	110-21
2E19	CONTOUR MASTER HYDRAULIC HOSES, L.H.	70-58	3D6	CURTAIN, SEPARATOR, RASP BAR CYLINDER	110-11
2D7	CONTOUR MASTER SOLENOID CONTROL RELIEF VALVE	70-20	3G22	CURTAIN, SPREADER	130-16
2E22	CONTOUR MASTER TILT CYLINDER	70-61	4B7	CURTAINS, GRAIN TANK	150-6
2E23	CONTOUR MASTER TILT CYLINDER HOSES AND FITTINGS	70-63	2H20	CUSHION, OPERATOR'S SEAT	90-20
3B21	CONTOUR MASTER, FEEDER HOUSE SHELL	100-20	2H16	CUSHIONS, SEAT, PASSENGER	90-16
1J1	CONTROL CABLES, HYDROSTATIC DRIVE	50-24	1C10	CYLINDER BLOCK	25-4
2H23	CONTROL PANEL, OPERATOR'S ARMREST	90-24	3C23	CYLINDER COVER, THRESHING	110-2
			3D3	CYLINDER DOOR (CORN)	110-8

## ALPHABETICAL INDEX - CONTINUED

GRID		PAGE	GRID		PAGE
3D1	CYLINDER DOOR (GRAIN) .....	110 - 6	3B5	DIPSTICK, REVERSER GEAR BOX.....	100 - 4
3110	CYLINDER DRIVE ADJUSTING BRACKET, DUAL-RANGE .....	140 - 32	3G24	DISC, CHAFF SPREADER .....	130 - 18
311	CYLINDER DRIVE GEARCASE, DUAL-RANGE .....	140 - 22	1J8	DISPLACEMENT CONTROL VALVE, HYDROSTATIC ..	50 - 32
316	CYLINDER DRIVE INTERMEDIATE SHAFT MOUNTING, DUAL-RANGE .....	140 - 28	4C19	DISPLAY BRACKET, YIELD MAPPING .....	155 - 4
318	CYLINDER DRIVE INTERMEDIATE SHEAVE .....	140 - 30	4D6	DISPLAY DECALS, YIELD MONITOR .....	155 - 15
314	CYLINDER DRIVE TIGHTENER, DUAL-RANGE .....	140 - 26	2111	DISPLAY PANEL, R.H. CORNERPOST .....	90 - 36
1D1	CYLINDER HEAD AND GASKET .....	25 - 20	4D3	DISPLAY W/DATASTORE .....	155 - 12
1C16	CYLINDER HEAD REMOVAL GASKET SET .....	25 - 10	4C19	DISPLAY, YIELD MAPPING .....	155 - 4
1C17	CYLINDER LINER .....	25 - 11	2H10	DOMELIGHT, CAB.....	90 - 10
1C17	CYLINDER LINER O-RING KIT .....	25 - 11	2F19	DOOR AND FRONT PANEL, LEFT .....	80 - 12
3D5	CYLINDER SHEAR BAR .....	110 - 10	2H14	DOOR LATCH, CAB .....	90 - 14
2D12	CYLINDER SPEED AND REEL LIFT, VALVE .....	70 - 26	2H12	DOOR, CAB AND GLASS .....	90 - 12
2D24	CYLINDER SPEED HYDRAULIC HOSE .....	70 - 38	3G8	DOOR, CHOPPER.....	130 - 1
2B11	CYLINDER, BRAKE SLAVE .....	60 - 10	3F7	DOOR, CLEAN GRAIN ELEVATOR CONVEYOR .....	125 - 6
2B9	CYLINDER, BRAKE, MASTER .....	60 - 8	3F5	DOOR, CLEAN GRAIN LOWER AUGER .....	125 - 4
3H23	CYLINDER, COUNTERSHAFT .....	140 - 18	3D3	DOOR, CYLINDER (CORN) .....	110 - 8
3H25	CYLINDER, DRIVE, SINGLE RANGE.....	140 - 21	3D1	DOOR, CYLINDER (GRAIN) .....	110 - 6
4C10	CYLINDER, GRAIN TANK UNLOADING DRIVE .....	150 - 34	2G20	DOOR, ENGINE ACCESS PLATFORM .....	80 - 38
2F21	CYLINDER, GULLWING DOOR, GAS OPERATED.....	80 - 14	1E13	DOOR, ENGINE PLATFORM .....	30 - 14
2D15	CYLINDER, HEADER LIFT, HYDRAULIC .....	70 - 29	3B19	DOOR, FEEDER HOUSE FRAME .....	100 - 18
2B5	CYLINDER, MASTER, BRAKE .....	60 - 4	4B3	DOOR, GRAIN TANK .....	150 - 2
2C3	CYLINDER, STEERING .....	60 - 26	2F21	DOOR, GULLWING, L.H.....	80 - 14
3D7	CYLINDER, THRESHING, RASP BAR .....	110 - 12	2G5	DOOR, GULLWING, R.H. ....	80 - 22
3D9	CYLINDER, THRESHING, SPIKE TOOTH .....	110 - 14	2F23	DOOR, LEFT REAR GULLWING .....	80 - 16
2E22	CYLINDER, TILT, CONTOUR MASTER.....	70 - 61	4C21	DOOR, MASS FLOW SENSOR DEFLECTOR YIELD MAPPING .....	155 - 6
2E23	CYLINDER, TILT, HOSES AND FITTINGS, CONTOUR MASTER.....	70 - 63	2G7	DOOR, RADIATOR .....	80 - 24
4B15	CYLINDER, UNLOADING AUGER SWING .....	150 - 14	1B5	DOOR, ROTARY SCREEN .....	20 - 4
D					
1C19	DAMPENER, CRANKSHAFT.....	25 - 13	3E2	DOOR, SHOE GRAIN SUPPLY AUGER .....	120 - 1
4D3	DATASTORE MODULE .....	155 - 12	3C24	DOOR, STONE TRAP, FEEDER HOUSE .....	110 - 4
4D5	DATASTORE MODULE .....	155 - 14	3F21	DOOR, TAILINGS ELEVATOR .....	125 - 20
4D3	DATASTORE W/DISPLAY.....	155 - 12	1B22	DRAIN PLUG, ENGINE BLOCK COOLANT .....	20 - 22
4D6	DECALS, DISPLAY, YIELD MONITOR.....	155 - 15	1D10	DRAIN PLUG, ENGINE OIL .....	25 - 30
4E1	DECALS, FRENCH CANADIAN .....	170 - 20	1C10	DRAIN VALVE, CYLINDER BLOCK .....	25 - 4
4D22	DECALS, FRONT AND REAR .....	170 - 16	1E11	DRAIN VALVE, FUEL .....	30 - 12
4D24	DECALS, FRONT AND REAR TIRE/WHEEL.....	170 - 18	1B11	DRAIN VALVE, RADIATOR.....	20 - 10
4D20	DECALS, L.H.....	170 - 14	1D14	DRAIN VALVE, WATER PUMP.....	25 - 34
4D6	DECALS, MOISTURE SENSOR, YIELD MONITOR .....	155 - 15	3J7	DRIVE AND SHIELD, UPPER TAILINGS AUGER.....	140 - 54
4E2	DECALS, PORTUGUESE.....	170 - 21	4C14	DRIVE BELT GUIDE, UNLOADING AUGER .....	150 - 38
4D18	DECALS, R.H. ....	170 - 12	1B17	DRIVE BELT IDLER PULLEY .....	20 - 16
4E3	DECALS, ROMANIAN .....	170 - 22	3J9	DRIVE CHAIN TIGHTENER, UPPER TAILINGS .....	140 - 57
4E4	DECALS, RUSSIAN .....	170 - 23	3C7	DRIVE CHAIN, FEEDER CONVEYOR .....	100 - 30
4D8	DECALS, SAFETY AND LOCATIONS .....	170 - 2	3J10	DRIVE IDLER, CLEAN GRAIN ELEVATOR .....	140 - 58
4D10	DECALS, SAFETY AND LOCATIONS .....	170 - 4	3H18	DRIVE SHAFT, COUNTERSHAFT AND GEARCASE ....	140 - 12
4D12	DECALS, SAFETY AND LOCATIONS .....	170 - 6	1I22	DRIVE SHAFT, FINAL DRIVE.....	50 - 21
4D14	DECALS, SAFETY AND LOCATIONS .....	170 - 8	3C20	DRIVE SHAFT, FRONT, (FIXED SPEED WITH REVERSER).....	100 - 44
4D16	DECALS, SAFETY AND LOCATIONS .....	170 - 10	3H14	DRIVE SHAFT, MAIN GEARCASE.....	140 - 8
4E5	DECALS, SPANISH .....	170 - 24	3C18	DRIVE SHAFT, UPPER, (FIXED SPEED WITH RE VERSER) .....	100 - 42
4E6	DECALS, UKRAINIAN .....	170 - 25	1I8	DRIVE SHAFTS .....	50 - 5
4D6	DECALS, YIELD MONITOR .....	155 - 15	3B15	DRIVE SHIELD WITH AIRFLOW, L.H. ....	100 - 14
4C21	DEFLECTOR DOOR, MASS FLOW SENSOR YIELD MAPPING.....	155 - 6	3B13	DRIVE SHIELD WITHOUT AIRFLOW, L.H. ....	100 - 12
3H3	DEFLECTOR, CHAFF SPREADER.....	130 - 22	3B17	DRIVE SHIELD, R.H. ....	100 - 16
3G17	DEFLECTOR, CORN .....	130 - 11	2G9	DRIVE SHIELD, R.H. REAR .....	80 - 27
3D1	DEFLECTOR, CYLINDER DOOR (GRAIN) .....	110 - 6	3J5	DRIVE SHIELDS, STRAW CHOPPER .....	140 - 52
3B19	DEFLECTOR, FEEDER HOUSE FRAME .....	100 - 18	3J10	DRIVE TIGHTENER, CLEAN GRAIN ELEVATOR .....	140 - 58
3G9	DEFLECTOR, TAIL BOARDS .....	130 - 2	3B11	DRIVE TIGHTENER, FEEDER HOUSE .....	100 - 10
1I20	DIFFERENTIAL SHAFTS, AND GEARS.....	50 - 18	3B7	DRIVE TIGHTENER, FIXED SPEED FEEDER HOUSE.....	100 - 6
3H20	DIPSTICK, COUNTERSHAFT GEARCASE .....	140 - 14	3B9	DRIVE TIGHTENER, VARIABLE SPEED .....	100 - 8
1D13	DIPSTICK, ENGINE OIL .....	25 - 33	1I9	DRIVE WHEELS .....	50 - 6
3H16	DIPSTICK, MAIN ENGINE GEARCASE .....	140 - 10	1I10	DRIVE WHEELS, HIGH FLOATATION.....	50 - 7
			2E3	DRIVE, BELT PICKUP / REEL PUMP MOUNTING SHEAVE .....	70 - 42
			3J1	DRIVE, CHOPPER (FRONT).....	140 - 48
			4C12	DRIVE, COUNTERSHAFT, UNLOADING AUGER.....	150 - 36

## ALPHABETICAL INDEX - CONTINUED

<i>GRID</i>		<i>PAGE</i>	<i>GRID</i>		<i>PAGE</i>
3I24	DRIVE, FAN, SPEED CONTROL SHEAVE LINKAGE....	140 - 46	3E13	ELEMENT, CHAFFER .....	120 - 12
3I14	DRIVE, GEARCASE, STRAW WALKER.....	140 - 36	3E15	ELEMENT, CHAFFER EXTENSION .....	120 - 14
1J10	DRIVE, HYDROSTATIC MOTOR.....	50 - 34	3E19	ELEMENT, SIEVE .....	120 - 18
1K1	DRIVE, HYDROSTATIC OIL HOSES, UPPER (4-WHEEL DRIVE).....	50 - 52	3F7	ELEVATOR, LOWER, CLEAN GRAIN .....	125 - 6
1J23	DRIVE, HYDROSTATIC, LOWER OIL LINES (2-WHEEL DRIVE).....	50 - 50	3F21	ELEVATOR, TAILINGS .....	125 - 20
1K7	DRIVE, HYDROSTATIC, LOWER OIL LINES (4-WHEEL DRIVE).....	50 - 58	2G20	ENGINE ACCESS PLATFORM.....	80 - 38
2E9	DRIVE, REEL, LINES AND HOSES, L.H. ....	70 - 48	1B22	ENGINE BLOCK COOLANT HEATER .....	20 - 22
3I12	DRIVE, SECONDARY COUNTERSHAFT.....	140 - 34	1E13	ENGINE COMPARTMENT.....	30 - 14
3H25	DRIVE, SINGLE RANGE CYLINDER .....	140 - 21	2G16	ENGINE COMPARTMENT.....	80 - 34
3J3	DRIVE, STRAW CHOPPER (REAR).....	140 - 50	1C9	ENGINE COOLANT CONDITIONER.....	25 - 2
3B3	DRIVE, VARIABLE SPEED, FRONT.....	100 - 2	1D1	ENGINE CYLINDER HEAD GASKET .....	25 - 20
1B13	DRIVES, ENGINE FAN .....	20 - 12	1B13	ENGINE FAN AND DRIVES .....	20 - 12
3I16	DRIVES, STRAW WALKER, CONVEYOR AUGERS, SIEVE AND CHAFFER DRIVE .....	140 - 38	1C4	ENGINE FITTINGS AND BELT .....	20 - 29
2B13	DRUM, BRAKE.....	60 - 12	1C20	ENGINE FLYWHEEL .....	25 - 14
3C3	DRUM, CHAIN AND FEEDER CONVEYOR IDLER SHAFT .....	100 - 26	1C24	ENGINE FRONT PLATE .....	25 - 18
2J9	DRYER, AIR CONDITIONER .....	95 - 9	1B18	ENGINE GEARCASE COUPLING WITH HUB.....	20 - 17
3I3	DUAL RANGE LOCKOUT ARM .....	140 - 25	3H8	ENGINE GEARCASE OIL FILTER ASSEMBLY .....	140 - 2
3I10	DUAL-RANGE CYLINDER DRIVE ADJUSTING BRACKET.....	140 - 32	3H10	ENGINE GEARCASE PRESSURE REGULATOR .....	140 - 4
3I1	DUAL-RANGE CYLINDER DRIVE GEARCASE .....	140 - 22	3H16	ENGINE GEARCASE, SEPARATOR AND PUMP DRIVE.....	140 - 10
3I6	DUAL-RANGE CYLINDER DRIVE INTERMEDIATE SHAFT MOUNTING.....	140 - 28	1C1	ENGINE INTERCOOLER.....	20 - 26
3I8	DUAL-RANGE CYLINDER DRIVE INTERMEDIATE SHEAVE.....	140 - 30	1C14	ENGINE MAJOR OVERHAUL GASKET SET.....	25 - 8
3I4	DUAL-RANGE CYLINDER DRIVE TIGHTENER .....	140 - 26	1C3	ENGINE MOUNTS .....	20 - 28
2J7	DUCTS, HEATER AND AIR CONDITIONING .....	95 - 7	1C3	ENGINE MOUNTS AND REAR SUPPORT .....	20 - 28
3C5	DUST FAN, FEEDER HOUSE - R.H. ....	100 - 28	1C8	ENGINE OIL (TORQ-GARD PLUS-50).....	25 - 1
3C16	DUST FAN, L.H. SIDE FEEDER HOUSE.....	100 - 40	1C10	ENGINE OIL BY-PASS VALVE .....	25 - 4
	<b>E</b>		1D13	ENGINE OIL DIPSTICK AND TUBE .....	25 - 33
1G14	ECU MODULE .....	40 - 48	1D10	ENGINE OIL DRAIN VALVE .....	25 - 30
1G18	ECU, ELECTRONIC CONTROL UNIT .....	40 - 52	1D12	ENGINE OIL FILL CAP .....	25 - 32
1F13	ELECTRICAL WIRING HARNESS, L.H. MAIN.....	40 - 20	1D4	ENGINE OIL FILL PLUG .....	25 - 23
1F19	ELECTRICAL WIRING HARNESS, R.H. MAIN W/GREENSTAR.....	40 - 28	1D8	ENGINE OIL FILTER .....	25 - 28
1G1	ELECTRICAL WIRING HARNESS, STEERING .....	40 - 34	1D10	ENGINE OIL PAN .....	25 - 30
1G16	ELECTRICAL CIRCUIT BREAKER .....	40 - 50	1D7	ENGINE OIL PUMP INTAKE AND HOUSING .....	25 - 26
1E24	ELECTRICAL CONNECTOR SERVICE KIT .....	40 - 4	1C17	ENGINE PISTON .....	25 - 11
1F1	ELECTRICAL CONNECTOR SERVICE KIT .....	40 - 6	1E13	ENGINE PLATFORM .....	30 - 14
1F6	ELECTRICAL CONVENIENCE OUTLET .....	40 - 12	1C12	ENGINE SHORT BLOCK.....	25 - 6
1F8	ELECTRICAL ENGINE WIRING HARNESS.....	40 - 14	1E9	ENGINE TACHOMETER SENSOR .....	30 - 10
1E22	ELECTRICAL TERMINALS AND CONNECTORS, WEATHERPACK .....	40 - 2	1D5	ENGINE VENTILATING SYSTEM.....	25 - 24
1F3	ELECTRICAL TERMINALS AND WIRING CONNECTORS .....	40 - 8	1F8	ENGINE WIRING HARNESS.....	40 - 14
1G3	ELECTRICAL WIRING HARNESS, AIR CONDITIONING.....	40 - 36	1B18	ENGINE-TRANSMISSION COUPLING WITH HUB .....	20 - 17
1F23	ELECTRICAL WIRING HARNESS, ARMREST .....	40 - 32	2J10	EVAPORATOR HEATER/AIR CONDITIONER .....	95 - 10
1F21	ELECTRICAL WIRING HARNESS, CAB .....	40 - 30	1D22	EXHAUST MANIFOLD .....	25 - 43
1G9	ELECTRICAL WIRING HARNESS, HARVESTRAK .....	40 - 42	1D22	EXHAUST MANIFOLD GASKET .....	25 - 43
1F11	ELECTRICAL WIRING HARNESS, L.H. MAIN.....	40 - 18	1E17	EXHAUST PIPE AND MUFFLER .....	30 - 18
1F15	ELECTRICAL WIRING HARNESS, R.H. MAIN .....	40 - 23	1D1	EXHAUST VALVE .....	25 - 20
1F16	ELECTRICAL WIRING HARNESS, R.H. MAIN W/O GREENSTAR .....	40 - 24	1B22	EXTENSION CORD, ENGINE BLOCK COOLANT HEATER.....	20 - 22
1F18	ELECTRICAL WIRING HARNESS, R.H.MAIN WITH GREENSTAR.....	40 - 27	3E15	EXTENSION ELEMENT, CHAFFER .....	120 - 14
3H22	ELECTROMAGNETIC HEADER CLUTCH .....	140 - 17	1I7	EXTENSION, AXLE .....	50 - 4
1G18	ELECTRONIC CONTROL UNIT (ECU).....	40 - 52	3G8	EXTENSION, CHOPPER DOOR.....	130 - 1
1G14	ELECTRONICS MODULE, CENTRAL AND CIRCUIT BOARDS .....	40 - 48	2I19	EXTENSION, LADDER ASSEMBLY .....	90 - 44
				<b>F</b>	
			1B17	FAN BELT IDLER PULLEY .....	20 - 16
			1B15	FAN DRIVE BELT TENSIONER .....	20 - 14
			3I22	FAN DRIVE SPEED CONTROL LINKAGE.....	140 - 44
			3I24	FAN DRIVE SPEED CONTROL SHEAVE LINKAGE.....	140 - 46
			1B15	FAN DRIVE SUPPORT .....	20 - 14
			3I20	FAN DRIVE, CLEANING, SEPARATOR.....	140 - 42
			1G19	FAN, ALTERNATOR .....	40 - 54
			3E5	FAN, CLEANING .....	120 - 4
			3C5	FAN, DUST, FEEDER HOUSE .....	100 - 28
			3C16	FAN, DUST, L.H. SIDE FEEDER HOUSE .....	100 - 40
			1B13	FAN, ENGINE.....	20 - 12
			3C16	FAN, FEEDER HOUSE DUST FAN, L.H. SIDE .....	100 - 40

## ALPHABETICAL INDEX - CONTINUED

GRID		PAGE	GRID		PAGE
2J2	FAN, HEATER AND AIR CONDITIONER.....	95 - 2	3E17	FRAME, CHAFFER .....	120 - 16
3C7	FEEDER CONVEYOR BELT .....	100 - 30	3B19	FRAME, FEEDER HOUSE .....	100 - 18
3C4	FEEDER CONVEYOR BRACKET .....	100 - 27	1B9	FRAME, RADIATOR SHELL .....	20 - 8
3C4	FEEDER CONVEYOR DRIVE CHAIN .....	100 - 27	1B7	FRAME, RADIATOR SHELL AND SEALS .....	20 - 6
3C7	FEEDER CONVEYOR DRIVE CHAIN BRACKET .....	100 - 30	2F9	FRAME, SEPARATOR.....	80 - 2
3C4	FEEDER CONVEYOR IDLER .....	100 - 27	3E21	FRAME, SIEVE .....	120 - 20
3C3	FEEDER CONVEYOR IDLER SHAFT, DRUM AND CHAIN .....	100 - 26	4E1	FRENCH CANADIAN DECALS AND LABELS .....	170 - 20
1H1	FEEDER HOUSE BACKSHAFT SPEED SENSOR .....	40 - 62	2F19	FRONT PANEL AND DOOR, LEFT .....	80 - 12
3B11	FEEDER HOUSE DRIVE TIGHTENER.....	100 - 10	2G3	FRONT PANEL, RIGHT.....	80 - 20
3B7	FEEDER HOUSE DRIVE TIGHTENER (FIXED SPEED).....	100 - 6	1C24	FRONT PLATE, ENGINE.....	25 - 18
3C5	FEEDER HOUSE DUST FAN - R.H. ....	100 - 28	2F15	FRONT SHIELD ASSEMBLY, R.H.....	80 - 8
3C16	FEEDER HOUSE DUST FAN, L.H. SIDE.....	100 - 40	2B19	FRONT STEERING HOSES AND LINES.....	60 - 18
3C1	FEEDER HOUSE FLOOR .....	100 - 24	3B3	FRONT VARIABLE DRIVE SHEAVE .....	100 - 2
3B19	FEEDER HOUSE FRAME .....	100 - 18	1E5	FUEL FILTER.....	30 - 6
3C20	FEEDER HOUSE FRONT DRIVE SHAFT, SHEAVE.....	100 - 44	1E5	FUEL FILTER SERVICE KIT.....	30 - 6
3C14	FEEDER HOUSE POSITION SENSOR .....	100 - 38	1E4	FUEL INJECTION NOZZLE.....	30 - 4
3C12	FEEDER HOUSE RETURN FLOOR.....	100 - 36	1E2	FUEL INJECTION PUMP AND LINES .....	30 - 2
2I7	FEEDER HOUSE REVERSER FOOT CONTROL .....	90 - 32	1E11	FUEL PUMP AND LEVEL SENSOR.....	30 - 12
3B21	FEEDER HOUSE SHELL, CONTOUR MASTER .....	100 - 20	1E11	FUEL SENDER .....	30 - 12
3C18	FEEDER HOUSE UPPER DRIVE SHAFT, (FIXED SPEED WITH REVERSER).....	100 - 42	2G18	FUEL TANK STEPS AND MOUNTING BRACKETS .....	80 - 36
3B23	FEEDER HOUSE UPPER SHAFT .....	100 - 22	1E11	FUEL TANK, SUPPORTS, AND FITTINGS .....	30 - 12
3C9	FEEDER HOUSE VARIABLE DRIVE, HOSE .....	100 - 33	1E7	FUEL TRANSFER PUMP .....	30 - 8
3B21	FEEDER HOUSE WEAR PLATES, CONTOUR MASTER .....	100 - 20			
3C24	FEEDER HOUSE/SEPARATOR SEAL, STONE TRAP ..	110 - 4		<b>G</b>	
3C10	FEEDER HOUSE, UPPER COUNTERSHAFT VARIABLE DRIVE .....	100 - 34	1C16	GASKET SET, CYLINDER HEAD REMOVAL .....	25 - 10
2H16	FIELD OFFICE .....	90 - 16	1C14	GASKET SET, ENGINE MAJOR OVERHAUL .....	25 - 8
1E15	FILTER, AIR CLEANER.....	30 - 16	1C16	GASKET SET, IN VEHICLE OVERHAUL.....	25 - 10
2J4	FILTER, AIR, RECIRCULATION, HEATER & A/C .....	95 - 4	1D1	GASKET, CYLINDER HEAD .....	25 - 20
2J6	FILTER, CAB AIR .....	95 - 6	1D8	GASKET, ENGINE OIL FILTER .....	25 - 28
2J10	FILTER, EVAPORATOR HEATER, A/C .....	95 - 10	1D22	GASKET, EXHAUST MANIFOLD .....	25 - 43
1E5	FILTER, FUEL .....	30 - 6	1C10	GASKET, PLASTIC, CYLINDER BLOCK .....	25 - 4
1E11	FILTER, FUEL TANK.....	30 - 12	1D4	GASKET, ROCKER ARM COVER .....	25 - 23
1J7	FILTER, HYDROSTATIC CHARGE PUMP.....	50 - 31	1C22	GASKET, TIMING GEAR COVER.....	25 - 16
2E21	FILTER, MAIN HYDRAULIC .....	70 - 60	1D21	GASKET, TURBOCHARGER .....	25 - 42
3H8	FILTER, OIL, ENGINE GEARCASE .....	140 - 2	2D22	GAUGE, ACCUMULATOR PRESSURE .....	70 - 36
1D15	FILTER, WATER PUMP .....	25 - 35	3B5	GEAR BOX, REVERSER.....	100 - 4
1G5	FILTER, WINDSHIELD WASHER .....	40 - 38	1C25	GEAR, CAMSHAFT .....	25 - 19
1I23	FINAL DRIVE .....	50 - 22	1C18	GEAR, CRANKSHAFT .....	25 - 12
1I24	FINAL DRIVE AXLE, GEAR AND BEARINGS .....	50 - 23	1D7	GEAR, ENGINE OIL PUMP.....	25 - 26
1I22	FINAL DRIVE SHAFT .....	50 - 21	1I23	GEAR, FINAL DRIVE.....	50 - 22
3D15	FINGER GRATE, SPIKE-TOOTH .....	110 - 20	1E2	GEAR, FUEL INJECTION PUMP DRIVE .....	30 - 2
3C16	FINGER, FEEDER HOUSE DUST FAN, L.H. ....	100 - 40	3B5	GEAR, REVERSER GEAR BOX.....	100 - 4
3C5	FINGER, FEEDER HOUSE DUST FAN, R.H. ....	100 - 28	3G20	GEAR, STRAW SPREADER.....	130 - 14
3E9	FINGER, PRECLEANER CHAFFER .....	120 - 8	3I14	GEARCASE DRIVE, STRAW WALKER .....	140 - 36
3E15	FINGERS, PLASTIC, CHAFFER .....	120 - 14	3H18	GEARCASE MOUNTING .....	140 - 12
2F1	FITTINGS, CHAFF SPREADER .....	70 - 66	3F13	GEARCASE, CLEAN GRAIN ELEVATOR .....	125 - 12
1E11	FITTINGS, FUEL TANK.....	30 - 12	3I1	GEARCASE, DUAL-RANGE CYLINDER DRIVE .....	140 - 22
2E23	FITTINGS, TILT CYLINDER - CONTOUR MASTER .....	70 - 63	3H14	GEARCASE, ENGINE .....	140 - 8
1I5	FIXED REAR AXLE .....	50 - 2	3H16	GEARCASE, ENGINE .....	140 - 10
2C9	FIXED REAR AXLE STEERING TIE RODS.....	60 - 33	4B22	GEARCASE, HORIZONTAL UNLOADING AUGER .....	150 - 21
3B7	FIXED SPEED FEEDER HOUSE DRIVE TIGHTENER..	100 - 6	3H12	GEARCASE, MAIN.....	140 - 6
2H6	FLOOR PANELS, CAB .....	90 - 6	3H20	GEARCASE, PRIMARY COUNTERSHAFT .....	140 - 14
3C1	FLOOR, FEEDER HOUSE .....	100 - 24	4B9	GEARCASE, VERTICAL AUGER LOWER .....	150 - 8
3C12	FLOOR, FEEDER HOUSE, RETURN.....	100 - 36	1I20	GEARS, DIFFERENTIAL .....	50 - 18
2E5	FLOW CONTROL VALVE, REEL DRIVE .....	70 - 44	3E3	GEARS, SHOE GRAIN SUPPLY AUGERS .....	120 - 2
4C21	FLOW SENSOR, MASS, YIELD MAPPING .....	155 - 6	1I16	GEARS, TRANSMISSION .....	50 - 14
1C21	FLYWHEEL HOUSING .....	25 - 15	1I18	GEARS, TRANSMISSION PINION .....	50 - 16
1C20	FLYWHEEL, ENGINE .....	25 - 14	2I9	GEARSHIFT LEVER AND LINKAGE .....	90 - 34
1D3	FOLLOWERS, CAMSHAFT.....	25 - 22	2H12	GLASS, CAB AND DOOR.....	90 - 12
2I7	FOOT PEDAL, FEEDER HOUSE REVERSER .....	90 - 32	1G10	GRAIN LOSS MONITOR .....	40 - 43
1K5	FOUR WHEEL DRIVE HYDRAULIC LINES AND HOSES, L.H. ....	50 - 56	4B7	GRAIN TANK AND CURTAINS.....	150 - 6
3E11	FRAME ARMS, PRECLEANER CHAFFER .....	120 - 10	4B5	GRAIN TANK BASE.....	150 - 4
			4C7	GRAIN TANK CROSS AUGERS.....	150 - 30
			1G13	GRAIN TANK FULL BIN SENSOR .....	40 - 46
			4C15	GRAIN TANK SAMPLING TROUGH.....	150 - 39

## ALPHABETICAL INDEX - CONTINUED

GRID		PAGE	GRID		PAGE
4B3	GRAIN TANK TOP.....	150 - 2	2F23	HINGE, LEFT REAR GULLWING .....	80 - 16
4C10	GRAIN TANK UNLOADING DRIVE CYLINDER.....	150 - 34	1B9	HINGE, RADIATOR ACCESS DOOR .....	20 - 8
4B11	GRAIN TANK VERTICAL UNLOADING AUGER .....	150 - 10	3F5	HINGED DOOR, LOWER AUGER, CLEAN GRAIN.....	125 - 4
1G12	GRAIN TANK WIRING HARNESS .....	40 - 45	2G14	HOOD, REAR.....	80 - 32
3D16	GRATE CURTAIN, BEATER .....	110 - 21	4B22	HORIZONTAL UNLOADING AUGER DRIVE GEARCASE .....	150 - 21
3D11	GRATE, BEATER (NARROW).....	110 - 16	4B23	HORIZONTAL UNLOADING AUGER HOUSING .....	150 - 22
3D15	GRATE, FINGER, SPIKE-TOOTH.....	110 - 20	4C1	HORIZONTAL UNLOADING AUGER HOUSING (EXPORT) .....	150 - 24
3D13	GRATE, SPIKE TOOTH CONCAVE .....	110 - 18	4B17	HORIZONTAL UNLOADING AUGER SWIVEL.....	150 - 16
2H10	GRILLE, SPEAKER .....	90 - 10	2H5	HORN ASSEMBLY.....	90 - 4
3G18	GUARD AND STRAW SPREADER MOUNTING .....	130 - 12	2I5	HORN BUTTON .....	90 - 30
2F21	GULLWING DOOR, L.H. ....	80 - 14	2D20	HOSE AND LINES, ONE GALLON ACCUMULATOR ...	70 - 34
2F23	GULLWING DOOR, LEFT REAR .....	80 - 16	2J12	HOSE, AIR CONDITIONER COMPRESSOR .....	95 - 12
2G5	GULLWING DOOR, R.H.....	80 - 22	1C1	HOSE, INTERCOOLER .....	20 - 26
			3C9	HOSE, VARIABLE DRIVE, FEEDER HOUSE .....	100 - 33
	H		1D5	HOSE, VENTILATION SYSTEM .....	25 - 24
2H6	HANDLE, CAB .....	90 - 6	2D16	HOSES AND LINES, HYDRAULIC, HEADER LIFT .....	70 - 30
2H14	HANDLE, CAB DOOR .....	90 - 14	1K3	HOSES AND LINES, HYDROSTATIC OIL COOLER.....	50 - 54
3E13	HANDLE, CHAFFER ELEMENT .....	120 - 12	2E9	HOSES AND LINES, REEL DRIVE, L.H. ....	70 - 48
3D3	HANDLE, CYLINDER DOOR (CORN) .....	110 - 8	2E17	HOSES AND LINES, REEL LIFT .....	70 - 56
3D1	HANDLE, CYLINDER DOOR (GRAIN) .....	110 - 6	2B19	HOSES AND LINES, STEERING, FRONT.....	60 - 18
3C1	HANDLE, FEEDER HOUSE LATCH.....	100 - 24	2C1	HOSES AND LINES, STEERING, REAR .....	60 - 24
2F21	HANDLE, GULLWING DOOR, L.H.....	80 - 14	2C22	HOSES AND LINES, WET CLUTCH OIL COOLER .....	70 - 10
2G5	HANDLE, GULLWING DOOR, R.H. ....	80 - 22	1K5	HOSES AND LINES, 4-WHEEL DRIVE, L.H.....	50 - 56
2H23	HANDLE, HYDROSTATIC .....	90 - 24	2F3	HOSES, CHAFF SPREADER .....	70 - 68
3E2	HANDLE, SHOE GRAIN AUGER CLEANOUT.....	120 - 1	2F5	HOSES, CHAFF SPREADER .....	70 - 70
3E19	HANDLE, SIEVE ELEMENT .....	120 - 18	1K9	HOSES, CONTROL VALVE TO CAM LOBE MOTOR....	50 - 60
3H1	HANDLES AND SHIELDS, CHAFF SPREADER .....	130 - 20	4C10	HOSES, GRAIN TANK UNLOADING DRIVE CYLINDER .....	150 - 34
2G16	HANDRAIL, ENGINE COMPARTMENT .....	80 - 34	2C16	HOSES, HYDRAULIC RETURN .....	70 - 4
2I20	HANDRAIL, LANDING, L.H. ....	90 - 46	2E19	HOSES, HYDRAULIC, CONTOUR MASTER L.H. ....	70 - 58
2I22	HANDRAIL, LANDING, R.H. ....	90 - 48	2D24	HOSES, HYDRAULIC, CYLINDER SPEED .....	70 - 38
2I17	HANDRAIL, PLATFORM EXTENSIONS .....	90 - 42	2E7	HOSES, HYDRAULIC, REEL PUMP.....	70 - 46
2G7	HANDRAIL, RADIATOR DOOR.....	80 - 24	2B17	HOSES, HYDRAULIC, STEERING, UPPER.....	60 - 16
2I24	HARDWARE KIT, CAB .....	90 - 50	2B21	HOSES, LINES, STEERING, L.H.....	60 - 20
2I5	HARDWARE, STEERING COLUMN .....	90 - 30	1J23	HOSES, OIL, HYDROSTATIC DRIVE, LOWER (2-WHEEL DRIVE).....	50 - 50
1F23	HARNESS, ARMREST WIRING .....	40 - 32	1K7	HOSES, OIL, HYDROSTATIC DRIVE, LOWER (4-WHEEL DRIVE).....	50 - 58
4D3	HARNESS, DATASTORE .....	155 - 12	1K1	HOSES, OIL, HYDROSTATIC DRIVE, UPPER (4-WHEEL DRIVE).....	50 - 52
1G13	HARNESS, FULL BIN SENSOR .....	40 - 46	2C14	HOSES, PRESSURE, HYDRAULIC .....	70 - 2
1F21	HARNESS, MAIN CAB WIRING .....	40 - 30	1B11	HOSES, RADIATOR .....	20 - 10
1F10	HARNESS, MAIN WIRING, L.H. ....	40 - 17	2E11	HOSES, REEL DRIVE, HYDRAULIC, FRONT .....	70 - 50
1F13	HARNESS, MAIN WIRING, L.H. ....	40 - 20	2E23	HOSES, TILT CYLINDER - CONTOUR MASTER .....	70 - 63
4C23	HARNESS, MOISTURE SENSOR MOTOR, YIELD MAPPING .....	155 - 8	4B13	HOSES, UNLOADING AUGER SWING CYLINDER .....	150 - 12
1F15	HARNESS, R.H. MAIN WIRING HARNESS WITHOUT GREENSTAR.....	40 - 23	3E3	HOUSING AND SHOE GRAIN SUPPLY AUGERS .....	120 - 2
1F18	HARNESS, R.H. MAIN, WITH GREENSTAR .....	40 - 27	1I15	HOUSING COVER, TRANSMISSION .....	50 - 12
1G9	HARVESTRAK WIRING HARNESS .....	40 - 42	2J4	HOUSING, AIR CONDITIONER/HEATER, LOWER .....	95 - 4
1D1	HEAD, CYLINDER .....	25 - 20	2J2	HOUSING, AIR CONDITIONER/HEATER, UPPER .....	95 - 2
3H22	HEADER ELECTROMAGNETIC CLUTCH .....	140 - 17	2H23	HOUSING, ARMREST CONTROL PANEL.....	90 - 24
2D8	HEADER HEIGHT CONTROL VALVE .....	70 - 21	2B9	HOUSING, BRAKE MASTER CYLINDER.....	60 - 8
2D15	HEADER LIFT CYLINDER, HYDRAULIC .....	70 - 29	2J6	HOUSING, CAB AIR FILTER .....	95 - 6
2D16	HEADER LIFT HYDRAULIC LINES AND HOSES .....	70 - 30	1D7	HOUSING, ENGINE OIL PUMP .....	25 - 26
2D10	HEADER LIFT MODULE, SOLENOID VALVE .....	70 - 24	1I23	HOUSING, FINAL DRIVE .....	50 - 22
1G11	HEADLIGHT, UNLOADING AUGER .....	40 - 44	1C21	HOUSING, FLYWHEEL .....	25 - 15
2H10	HEADLINER, CAB .....	90 - 10	4B23	HOUSING, HORIZONTAL UNLOADING AUGER.....	150 - 22
2J4	HEATER AND A/C HOUSING, LOWER .....	95 - 4	4C1	HOUSING, HORIZONTAL UNLOADING AUGER (EXPORT) .....	150 - 24
2J7	HEATER AND AIR CONDITIONING DUCTS .....	95 - 7	1J5	HOUSING, HYDROSTATIC PUMP .....	50 - 28
2J2	HEATER, AIR CONDITIONING HOUSING, UPPER .....	95 - 2	1I5	HOUSING, SPINDLE, REAR AXLE .....	50 - 2
1B22	HEATER, COOLANT, ENGINE BLOCK .....	20 - 22	2I5	HOUSING, STEERING COLUMN .....	90 - 30
1I10	HIGH FLOATATION DRIVE WHEELS .....	50 - 7	3F21	HOUSING, TAILINGS ELEVATOR .....	125 - 20
3D1	HINGE, CYLINDER DOOR .....	110 - 6	1D16	HOUSING, THERMOSTAT .....	25 - 36
1E13	HINGE, ENGINE PLATFORM .....	30 - 14	1I14	HOUSING, TRANSMISSION AND DIFFERENTIAL .....	50 - 11
4B3	HINGE, GRAIN TANK DOOR .....	150 - 2	3G5	HOUSING, UPPER TAILINGS AUGER .....	125 - 28
2G5	HINGE, GULLWING DOOR, R.H.....	80 - 22			
4C3	HINGE, HORIZONTAL UNLOADING AUGER .....	150 - 26			
2F21	HINGE, L.H. GULLWING DOOR.....	80 - 14			



## ALPHABETICAL INDEX - CONTINUED

GRID		PAGE	GRID		PAGE
4B21	HUB SUPPORT, HORIZONTAL UNLOADING AUGER ..	150 - 20	1E15	INTAKE TUBES AND AIR CLEANER .....	30 - 16
2F3	HUB, CHAFF SPREADER .....	70 - 68	1D1	INTAKE VALVE .....	25 - 20
1B13	HUB, FAN .....	20 - 12	1D7	INTAKE, ENGINE OIL PUMP .....	25 - 26
1B5	HUB, ROTARY SCREEN DOOR .....	20 - 4	1C1	INTERCOOLER .....	20 - 26
2E21	HYDRAULIC FILTER, MAIN .....	70 - 60	3I6	INTERMEDIATE SHAFT MOUNTING, CYLINDER DRIVE, DUAL-RANGE .....	140 - 28
3C9	HYDRAULIC HOSE, VARIABLE DRIVE, FEEDER HOUSE .....	100 - 33	3I8	INTERMEDIATE SHEAVE, CYLINDER DRIVE DUAL RANGE .....	140 - 30
2E19	HYDRAULIC HOSES, CONTOUR MASTER L.H. ....	70 - 58	K		
2D24	HYDRAULIC HOSES, CYLINDER SPEED .....	70 - 38	2B9	KIT, BRAKE MASTER CYLINDER .....	60 - 8
2E7	HYDRAULIC HOSES, REEL PUMP .....	70 - 46	2I24	KIT, CAB HARDWARE .....	90 - 50
2D16	HYDRAULIC LINES AND HOSES, HEADER LIFT .....	70 - 30	2E22	KIT, CONTOUR MASTER CYLINDER REPAIR .....	70 - 61
1K5	HYDRAULIC LINES AND HOSES, L.H., 4-WHEEL DRIVE .....	50 - 56	1J21	KIT, CONTROL VALVE AND AXLE HOSES .....	50 - 48
2E15	HYDRAULIC LINES AND HOSES, REEL FORE-AND-AFT, FRONT .....	70 - 54	2D14	KIT, CONTROL VALVE, AUGER SWING .....	70 - 28
2C22	HYDRAULIC LINES AND HOSES, WET CLUTCH OIL COOLER .....	70 - 10	2D14	KIT, CONTROL VALVE, REEL FORE/AFT .....	70 - 28
1K11	HYDRAULIC LINES, CASE DRAIN, 4-WHEEL DRIVE .....	50 - 62	1F6	KIT, CONVENIENCE OUTLET .....	40 - 12
2E13	HYDRAULIC LINES, REEL FORE-AND-AFT, L.H. ....	70 - 52	1C17	KIT, CYLINDER LINER O-RING .....	25 - 11
1J17	HYDRAULIC MOTOR PISTON CARRIER .....	50 - 43	1E24	KIT, ELECTRICAL CONNECTOR SERVICE .....	40 - 4
2C14	HYDRAULIC PRESSURE LINES AND HOSES .....	70 - 2	1F1	KIT, ELECTRICAL CONNECTOR SERVICE .....	40 - 6
2E1	HYDRAULIC PUMP FEEDER HOUSE / REEL DRIVE ..	70 - 40	1E5	KIT, FUEL FILTER SERVICE .....	30 - 6
2C18	HYDRAULIC PUMP, MAIN .....	70 - 6	2D10	KIT, HEADER LIFT CONTROL VALVE REPAIR .....	70 - 24
2C16	HYDRAULIC RETURN LINES .....	70 - 4	1J10	KIT, HYDROSTATIC DRIVE MOTOR .....	50 - 34
2C13	HYDRAULIC/HYDROSTATIC OIL RESERVOIR .....	70 - 1	2C18	KIT, MAIN HYDRAULIC PUMP REPAIR .....	70 - 6
1J7	HYDROSTATIC DRIVE CHARGE PUMP .....	50 - 31	2E5	KIT, REEL DRIVE FLOW CONTROL REPAIR .....	70 - 44
1J1	HYDROSTATIC DRIVE CONTROL CABLES .....	50 - 24	2D12	KIT, REEL LIFT/VARIABLE AND CYLINDER SPEED .....	70 - 26
1J8	HYDROSTATIC DRIVE DISPLACEMENT VALVE .....	50 - 32	1H3	KIT, REEL SPEED BRACKET .....	40 - 64
1J10	HYDROSTATIC DRIVE MOTOR, .....	50 - 34	2C3	KIT, STEERING CYLINDER REPAIR .....	60 - 26
1K1	HYDROSTATIC DRIVE OIL HOSES, UPPER (4-WHEEL DRIVE) .....	50 - 52	2B15	KIT, STEERING PUMP SEALS .....	60 - 14
1J23	HYDROSTATIC DRIVE OIL LINES AND HOSES, LOWER (2-WHEEL DRIVE) .....	50 - 50	3D21	KIT, STRAW WALKER BEARING (FRONT) .....	110 - 26
1K7	HYDROSTATIC DRIVE OIL LINES AND HOSES, LOWER (4-WHEEL DRIVE) .....	50 - 58	1F3	KIT, TERMINAL AND WIRING .....	40 - 8
1J5	HYDROSTATIC DRIVE PUMP .....	50 - 28	1D21	KIT, TURBOCHARGER .....	25 - 42
1J3	HYDROSTATIC DRIVE PUMP SHAFT AND COVER ....	50 - 26	4B15	KIT, UNLOADING AUGER SWING CYLINDER .....	150 - 14
2H23	HYDROSTATIC HANDLE .....	90 - 24	1B5	KNIFE, ROTARY SCREEN DOOR .....	20 - 4
1J12	HYDROSTATIC MOTOR VALVE .....	50 - 37	3G13	KNIFEBANK AND HOUSING, CHOPPER .....	130 - 6
1K3	HYDROSTATIC OIL COOLER LINES AND HOSES .....	50 - 54	2J6	KNOB, AIR FILTER .....	95 - 6
2C13	HYDROSTATIC/HYDRAULIC RESERVOIR .....	70 - 1	2E24	KNOB, CHAFF SPREADER ADJUSTER .....	70 - 64
I			4B3	KNOB, DOOR, GRAIN TANK .....	150 - 2
1B3	IDLER ARMS, ROTARY SCREEN DRIVE .....	20 - 2	2I9	KNOB, GEARSHIFT .....	90 - 34
1B17	IDLER PULLEY .....	20 - 16	2I13	KNOB, OVERHEAD CONSOLE .....	90 - 38
3C3	IDLER SHAFT, FEEDER HOUSE .....	100 - 26	2I5	KNOB, STEERING COLUMN .....	90 - 30
3J10	IDLER, DRIVE, CLEAN GRAIN ELEVATOR .....	140 - 58	L		
3C4	IDLER, FEEDER CONVEYOR .....	100 - 27	3B13	L.H. DRIVE SHIELD WITHOUT AIRFLOW .....	100 - 12
2I5	IGNITION SWITCH .....	90 - 30	1F11	L.H. MAIN WIRING HARNESS .....	40 - 18
1D15	IMPELLER, WATER PUMP .....	25 - 35	1F13	L.H. MAIN WIRING HARNESS .....	40 - 20
1C16	IN VEHICLE OVERHAUL GASKET SET .....	25 - 10	4E1	LABELS, FRENCH CANADIAN .....	170 - 20
1H6	INDICATOR, CONCAVE .....	40 - 68	4E2	LABELS, PORTUGUESE .....	170 - 21
1H6	INDICATOR, SPIKE TOOTH BALL JOINT .....	40 - 68	4E3	LABELS, ROMANIAN .....	170 - 22
1D12	INLET OIL FILL .....	25 - 32	4E4	LABELS, RUSSIAN .....	170 - 23
1D14	INLET, WATER PUMP .....	25 - 34	4E5	LABELS, SPANISH .....	170 - 24
1J15	INNER COVER - CAM LOBE MOTOR .....	50 - 40	4E6	LABELS, UKRAINIAN .....	170 - 25
1I16	INPUT SHAFT, TRANSMISSION .....	50 - 14	2I19	LADDER EXTENSION ASSEMBLY .....	90 - 44
3D11	INSERTS, CONCAVE AND BEATER GRATE .....	110 - 16	2I17	LADDER, CAB PLATFORM .....	90 - 42
1D1	INSERTS, CYLINDER VALVE .....	25 - 20	2G16	LADDER, ENGINE COMPARTMENT .....	80 - 34
3D13	INSERTS, SPIKE TOOTH CONCAVE .....	110 - 18	4B3	LADDER, GRAIN TANK .....	150 - 2
1H21	INSPECTION LIGHT, CLEANING SHOE .....	40 - 84	2G10	LADDER, REAR LANDING .....	80 - 28
1D18	INTAKE AIR MANIFOLD .....	25 - 38	2G12	LADDER, REAR LANDING, LATCH ARM .....	80 - 30
3E3	INTAKE SHIELD, SHOE GRAIN SUPPLY AUGER .....	120 - 2	1H15	LAMP ASSEMBLY - L.H. FRONT .....	40 - 78
3E5	INTAKE SHIELDS, CLEANING FAN .....	120 - 4	1H16	LAMP ASSEMBLY, R.H. FRONT (AMBER) .....	40 - 79
			1H17	LAMP ASSEMBLY, REAR (AMBER) .....	40 - 80
			2G1	LAMP, REAR CORNER PANEL, FLOODLAMP .....	80 - 18

## ALPHABETICAL INDEX - CONTINUED

GRID		PAGE	GRID		PAGE
2G20	LAMP, REAR, ENGINE ACCESS PLATFORM .....	80 - 38	3C14	LINKAGE, CONCAVE INDICATOR .....	100 - 38
2G16	LAMP, SERVICE, ENGINE COMPARTMENT .....	80 - 34	1H6	LINKAGE, CORN AND SMALL GRAIN CONCAVE .....	40 - 68
1H15	LAMP, TURN SIGNAL, L.H. FRONT (AMBER) .....	40 - 78	3I24	LINKAGE, FAN DRIVE SPEED CONTROL .....	140 - 46
2I20	LANDING, L.H. ....	90 - 46	2I9	LINKAGE, GEARSHIFT .....	90 - 34
2I22	LANDING, R.H. ....	90 - 48	3I22	LINKAGE, SPEED CONTROL, FAN DRIVE .....	140 - 44
2G10	LANDING, REAR .....	80 - 28	3F11	LOADING AUGER, CLEAN GRAIN .....	125 - 10
2G12	LATCH ARM, REAR LADDER LANDING .....	80 - 30	3I3	LOCKOUT ARM, DUAL RANGE .....	140 - 25
3B13	LATCH DRIVE SHIELD, L.H. ....	100 - 12	3E7	LOUVER, PRECLEANING CHAFFER .....	120 - 6
3C1	LATCH HANDLE, FEEDER HOUSE FLOOR .....	100 - 24	1H12	LOW SHAFT SPEED SENSORS AND BRACKETS .....	40 - 75
2H14	LATCH, CAB DOOR .....	90 - 14	3F5	LOWER AUGER, CLEAN GRAIN .....	125 - 4
3B17	LATCH, DRIVE SHIELD, R.H. ....	100 - 16	3F7	LOWER ELEVATOR, CLEAN GRAIN .....	125 - 6
4B9	LATCH, GRAIN TANK CLEAN OUT CHUTE .....	150 - 8	1J23	LOWER HYDROSTATIC DRIVE OIL LINES AND HOSES (2-WHEEL DRIVE) .....	50 - 50
4B3	LATCH, GRAIN TANK DOOR .....	150 - 2	1K7	LOWER HYDROSTATIC DRIVE OIL LINES AND HOSES (4-WHEEL DRIVE) .....	50 - 58
1B9	LATCH, RADIATOR SHELL .....	20 - 8	1C9	LUBRICANT, ELECTRICAL CONNECTOR, ENGINE .....	25 - 2
3E2	LATCH, SHOE GRAIN SUPPLY AUGER .....	120 - 1	1C9	LUBRICANT, VALVE STEM .....	25 - 2
3F21	LATCH, TAILINGS ELEVATOR .....	125 - 20			
2F13	LEFT SIDE SHIELD ASSEMBLY .....	80 - 6		M	
2F11	LEFT SIDE SHIELD, FRONT .....	80 - 4			
2I9	LEVER, GEARSHIFT .....	90 - 34	1C10	MAIN BEARING CAP .....	25 - 4
2D15	LIFT CYLINDER, HEADER, HYDRAULIC .....	70 - 29	1C18	MAIN BEARINGS .....	25 - 12
1H16	LIGHT ASSEMBLY - R.H. FRONT (AMBER) .....	40 - 79	3H12	MAIN GEARCASE .....	140 - 6
1H14	LIGHT, CAB ROOF .....	40 - 77	2C18	MAIN HYDRAULIC PUMP .....	70 - 6
1H21	LIGHT, CLEANING SHOE INSPECTION .....	40 - 84	2D8	MAIN VALVE BLOCK SOLENOID ACTIVE HEADER HEIGHT CONTROL .....	70 - 21
2H10	LIGHT, DOME, CAB .....	90 - 10	1F10	MAIN WIRING HARNESS, L.H. ....	40 - 17
2G20	LIGHT, ENGINE ACCESS PLATFORM .....	80 - 38	1F15	MAIN WIRING HARNESS, R.H. WITHOUT GREENSTAR .....	40 - 23
2G16	LIGHT, ENGINE COMPARTMENT .....	80 - 34	1F18	MAIN WIRING HARNESS, R.H, WITH GREENSTAR .....	40 - 27
1H15	LIGHT, L.H. FRONT (AMBER) .....	40 - 78	2J11	MANIFOLD, A/C COMPRESSOR, R134A .....	95 - 11
1H18	LIGHT, REAR TURN AND TAIL .....	40 - 81	1D18	MANIFOLD, AIR INTAKE .....	25 - 38
2F21	LIGHT, SERVICE, L.H. GULLWING .....	80 - 14	1J15	MANIFOLD, CAM LOBE MOTOR .....	50 - 40
2G5	LIGHT, SERVICE, R.H. ....	80 - 22	1D22	MANIFOLD, EXHAUST .....	25 - 43
2G7	LIGHT, SERVICE, RADIATOR .....	80 - 24	4C21	MASS FLOW SENSOR AND BRACKET YIELD MAPPING .....	155 - 6
1H19	LIGHT, SIDE FINDER .....	40 - 82	4C21	MASS FLOW SENSOR DOOR, YIELD MAPPING YIELD MAPPING .....	155 - 6
2H3	LIGHT, STUBBLE .....	90 - 2	4C21	MASS FLOW SENSOR, YIELD MAPPING .....	155 - 6
1H20	LIGHT, TRANSPORT WARNING .....	40 - 83	2B9	MASTER BRAKE CYLINDER .....	60 - 8
1G11	LIGHT, UNLOADING AUGER .....	40 - 44	2B7	MASTER CYLINDER, RESERVOIR, BRAKE LINES .....	60 - 6
1C17	LINER, CYLINDER .....	25 - 11	2B5	MASTER CYLINDERS, AND BRAKE PEDALS .....	60 - 4
2F1	LINES AND FITTINGS, CHAFF SPREADER .....	70 - 66	1E13	MAT, ENGINE PLATFORM .....	30 - 14
2D16	LINES AND HOSES, HYDRAULIC, HEADER LIFT .....	70 - 30	3B19	MAT, FEEDER HOUSE FRAME .....	100 - 18
1K3	LINES AND HOSES, HYDROSTATIC OIL COOLER .....	50 - 54	2H8	MAT, FLOOR .....	90 - 8
2E9	LINES AND HOSES, REEL DRIVE, L.H. ....	70 - 48	1B9	MAT, RADIATOR SHELL .....	20 - 8
2E17	LINES AND HOSES, REEL LIFT .....	70 - 56	3F23	MATERIAL SENSOR, TAILINGS ELEVATOR .....	125 - 22
2B19	LINES AND HOSES, STEERING, FRONT .....	60 - 18	2I20	MIRROR, REAR VIEW, L.H. ....	90 - 46
2C1	LINES AND HOSES, STEERING, REAR .....	60 - 24	2I22	MIRROR, REAR VIEW, R.H. ....	90 - 48
2C22	LINES AND HOSES, WET CLUTCH OIL COOLER .....	70 - 10	4C19	MOBILE PROCESSOR, YIELD MAPPING .....	155 - 4
1K5	LINES AND HOSES, 4-WHEEL DRIVE, L.H. ....	50 - 56	2I11	MODULE, ACTIVE HEADER HEIGHT CONTROL DISPLAY, R.H. CORNERPOST .....	90 - 36
2B7	LINES, BRAKE, RESERVOIR, MASTER CYLINDER .....	60 - 6	1G14	MODULE, CENTRAL ELECTRONICS AND CIRCUIT BOARDS .....	40 - 48
2F3	LINES, CHAFF SPREADER .....	70 - 68	4D3	MODULE, DATASTORE .....	155 - 12
2F5	LINES, CHAFF SPREADER .....	70 - 70	4D5	MODULE, DATASTORE .....	155 - 14
1K9	LINES, CONTROL VALVE TO CAM LOBE MOTOR .....	50 - 60	2I11	MODULE, GRAIN LOSS DISPLAY, R.H. CORNERPOST .....	90 - 36
1E5	LINES, FUEL FILTER .....	30 - 6	2D1	MODULE, SIX STACK SOLENOID CONTROL VALVE .....	70 - 14
1E2	LINES, FUEL INJECTION .....	30 - 2	2I11	MODULE, TACHOMETER DISPLAY, R.H. CORNERPOST .....	90 - 36
2B21	LINES, HOSES, STEERING, L.H. ....	60 - 20	3F23	MODULE, TAILINGS ELEVATOR SENSOR .....	125 - 22
2C16	LINES, HYDRAULIC RESERVOIR RETURN .....	70 - 4	1H8	MOISTURE SENSOR .....	40 - 70
2D24	LINES, HYDRAULIC, CYLINDER SPEED .....	70 - 38	4C23	MOISTURE SENSOR AND BRACKET, YIELD MAPPING .....	155 - 8
2E7	LINES, HYDRAULIC, REEL PUMP .....	70 - 46	4C23	MOISTURE SENSOR COVER, YIELD MAPPING .....	155 - 8
1J23	LINES, OIL, HYDROSTATIC DRIVE, LOWER (2-WHEEL DRIVE) .....	50 - 50			
1K7	LINES, OIL, HYDROSTATIC DRIVE, LOWER (4-WHEEL DRIVE) .....	50 - 58			
2C14	LINES, PRESSURE, HYDRAULIC .....	70 - 2			
2E11	LINES, REEL DRIVE, HYDRAULIC, FRONT .....	70 - 50			
2B23	LINES, STEERING, R.H. SIDE .....	60 - 22			
4B13	LINES, UNLOADING AUGER SWING CYLINDER .....	150 - 12			
3F7	LINK, CHAIN, GLEAN GRAIN ELEVATOR CONVEYOR .....	125 - 6			
3D11	LINK, SPIKE TOOTH TO RASP BAR (NARROW) .....	110 - 16			
1H6	LINKAGE, CONCAVE INDICATOR .....	40 - 68			

## ALPHABETICAL INDEX - CONTINUED

GRID		PAGE	GRID		PAGE
4D1	MOISTURE SENSOR COVERS - YIELD MAPPING W/O MOISTURE SENSOR .....	155 - 10	2H23	OPERATOR'S ARMREST PANEL .....	90 - 24
4D1	MOISTURE SENSOR COVERS, YIELD MAPPING .....	155 - 10	2I1	OPERATOR'S ARMREST PANEL .....	90 - 26
4D6	MOISTURE SENSOR DECALS, YIELD MONITOR .....	155 - 15	2H20	OPERATOR'S SEAT AND BACKREST .....	90 - 20
4C23	MOISTURE SENSOR MOTOR, YIELD MAPPING .....	155 - 8	1F6	OUTLET, CONVENIENCE KIT .....	40 - 12
3G24	MOTOR AND DISC, CHAFF SPREADER .....	130 - 18	1C16	OVERHAUL GASKET SET .....	25 - 10
1G24	MOTOR 12 VOLT, STARTER .....	40 - 60	1C14	OVERHAUL KIT, ENGINE .....	25 - 8
1H10	MOTOR, ADJUSTING, SEPARATOR FAN DRIVE .....	40 - 72	2I13	OVERHEAD CONSOLE .....	90 - 38
1J13	MOTOR, CAM LOBE .....	50 - 38			
1H5	MOTOR, CONCAVE ADJUSTING .....	40 - 67		P	
2J2	MOTOR, HEATER AND AIR CONDITIONER .....	95 - 2			
1J10	MOTOR, HYDROSTATIC DRIVE .....	50 - 34	4C23	PADDLE, MOISTURE SENSOR, YIELD MAPPING .....	155 - 8
1J12	MOTOR, HYDROSTATIC VALVE .....	50 - 37	3G5	PADDLES, UPPER TAILINGS AUGER .....	125 - 28
4C23	MOTOR, MOISTURE SENSOR, YIELD MAPPING .....	155 - 8	3H3	PAN, CHAFF SPREADER .....	130 - 22
1J17	MOTOR, PISTON CARRIER .....	50 - 43	1D10	PAN, ENGINE OIL .....	25 - 30
2J4	MOTOR, RECIRCULATION BLOWER, HEATER AND AIR CONDITIONER .....	95 - 4	3E23	PAN, SHAKER .....	120 - 22
1H3	MOTOR, REEL SPEED, AND BRACKET .....	40 - 64	2F19	PANEL AND DOOR, LEFT FRONT .....	80 - 12
1G7	MOTOR, WINDSHIELD WIPER (LONG) .....	40 - 40	2I1	PANEL, ARMREST .....	90 - 26
2G18	MOUNTING BRACKETS, FUEL TANK .....	80 - 36	2H23	PANEL, ARMREST CONTROL .....	90 - 24
3H5	MOUNTING SUPPORT, CHAFF SPREADER .....	130 - 24	2G3	PANEL, RIGHT FRONT .....	80 - 20
2C13	MOUNTING, HYDRAULIC/HYDROSTATIC OIL RESERVOIR .....	70 - 1	2G14	PANEL, SIDE, REAR HOOD .....	80 - 32
2D20	MOUNTING, ONE GALLON ACCUMULATOR .....	70 - 34	2H6	PANELS, CAB FLOOR .....	90 - 6
3G18	MOUNTING, STRAW SPREADER AND GUARD .....	130 - 12	2H8	PANELS, CAB INTERIOR TRIM .....	90 - 8
4B15	MOUNTING, UNLOADING AUGER SWING CYLINDER .....	150 - 14	2B3	PARKING BRAKE PEDAL AND SEAL .....	60 - 2
2D3	MOUNTINGS, SOLENOID CONTROL VALVE FIVE STACK .....	70 - 16	2H16	PASSENGER SEAT CUSHIONS .....	90 - 16
2D5	MOUNTINGS, SOLENOID CONTROL VALVE MODULE (FOUR STACK) .....	70 - 18	2H22	PASSENGER'S SEAT SEATBELT .....	90 - 22
1K12	MUD SHIELDS, POWERED REAR WHEELS .....	50 - 63	2B3	PEDAL, PARKING BRAKE .....	60 - 2
1E17	MUFFLER AND EXHAUST PIPE .....	30 - 18	2I7	PEDAL, REVERSER FOOT CONTROL, FEEDER HOUSE .....	90 - 32
	N		2B5	PEDALS, BRAKE AND MASTER CYLINDER .....	60 - 4
1E4	NOZZLE, FUEL INJECTION .....	30 - 4	1C17	PISTON RINGS, ENGINE .....	25 - 11
	O		1J17	PISTON, CAM, AND CARRIER .....	50 - 43
1C9	OFF-SEASON STORAGE KIT .....	25 - 2	1J18	PIVOTS, CAPS AND YOKE (STEERABLE MOTOR) ....	50 - 44
2C20	OIL COOLER AND A/C CONDENSER .....	70 - 8	1C10	PLASTIC GASKET, CYLINDER BLOCK .....	25 - 4
1K3	OIL COOLER LINES AND HOSES, HYDROSTATIC .....	50 - 54	4C5	PLATE, CROSS AUGER BEARING, L.H. ....	150 - 28
1B24	OIL DRAIN, ENGINE CRANKCASE .....	20 - 24	3B21	PLATES, WEAR, FEEDER HOUSE CONTOUR MASTER .....	100 - 20
1D12	OIL FILL INLET AND COVER .....	25 - 32	1E13	PLATFORM, ENGINE .....	30 - 14
3H8	OIL FILTER ASSEMBLY, ENGINE GEARCASE .....	140 - 2	2G20	PLATFORM, ENGINE ACCESS .....	80 - 38
1D8	OIL FILTER, ENGINE .....	25 - 28	1D4	PLUG, ENGINE OIL FILL .....	25 - 23
1J23	OIL HOSES, HYDROSTATIC DRIVE, LOWER (2-WHEEL DRIVE) .....	50 - 50	4E2	PORTUGUESE DECALS AND LABELS .....	170 - 21
1K7	OIL HOSES, HYDROSTATIC DRIVE, LOWER (4-WHEEL DRIVE) .....	50 - 58	4C17	POSITION RECEIVER, BRACKET AND COVER YIELD MAPPING .....	155 - 2
1K1	OIL HOSES, UPPER, HYDROSTATIC DRIVE (4-WHEEL DRIVE) .....	50 - 52	2I13	POTENTIOMETER .....	90 - 38
1I23	OIL LINE, FINAL DRIVE .....	50 - 22	3E9	PRECLEANER CHAFFER FRAME .....	120 - 8
1J23	OIL LINES HYDROSTATIC DRIVE, LOWER (2-WHEEL DRIVE) .....	50 - 50	3E11	PRECLEANER CHAFFER FRAME ARMS .....	120 - 10
1K7	OIL LINES HYDROSTATIC DRIVE, LOWER (4-WHEEL DRIVE) .....	50 - 58	3E7	PRECLEANING CHAFFER .....	120 - 6
2B13	OIL LINES, BRAKE .....	60 - 12	2D22	PRESSURE GAUGE, ACCUMULATOR .....	70 - 36
1D19	OIL LINES, TURBOCHARGER .....	25 - 40	3H10	PRESSURE REGULATOR, ENGINE GEARCASE .....	140 - 4
1C22	OIL PRESSURE RELIEF VALVE .....	25 - 16	3H8	PRESSURE SWITCH, GEARCASE OIL FILTER .....	140 - 2
1B19	OIL PRESSURE SENSOR .....	20 - 18	2C14	PRESSURE, HYDRAULIC, LINES AND HOSES .....	70 - 2
1J7	OIL PUMP, HYDROSTATIC DRIVE CHARGE PUMP .....	50 - 31	3H23	PRIMARY COUNTERSHAFT, VARIABLE SHEAVE .....	140 - 18
2J11	OIL, A/C COMPRESSOR .....	95 - 11	4C19	PROCESSOR, MOBILE, YIELD MAPPING .....	155 - 4
1C8	OIL, ENGINE (TORQ-GARD, PLUS-50) .....	25 - 1	1C19	PULLEY, CRANKSHAFT .....	25 - 13
1C9	OIL, VALVE STEM LUBRICANT .....	25 - 2	1B13	PULLEY, ENGINE FAN .....	20 - 12
			1B17	PULLEY, FAN AND DRIVE IDLER .....	20 - 16
			3I12	PULLEY, SECONDARY COUNTERSHAFT DRIVE .....	140 - 34
			1D14	PULLEY, WATER PUMP .....	25 - 34
			3H16	PUMP DRIVE AND SEPARATOR, GEARCASE .....	140 - 10
			2E3	PUMP MOUNTING SHEAVE, REEL / BELT PICKUP DRIVE .....	70 - 42
			2E1	PUMP, CHAFF SPREADER .....	70 - 40
			2F3	PUMP, CHAFF SPREADER, HOSES, VALVES .....	70 - 68
			1D7	PUMP, ENGINE OIL .....	25 - 26
			1E11	PUMP, FUEL .....	30 - 12
			1E2	PUMP, FUEL INJECTION .....	30 - 2
			1E7	PUMP, FUEL TRANSFER .....	30 - 8

## ALPHABETICAL INDEX - CONTINUED

GRID		PAGE	GRID		PAGE
1J3	PUMP, HYDROSTATIC DRIVE .....	50 - 26	2C13	RESERVOIR, HYDRAULIC/HYDROSTATIC .....	70 - 1
1J7	PUMP, HYDROSTATIC DRIVE CHARGE .....	50 - 31	1G5	RESERVOIR, WINDSHIELD WASHER .....	40 - 38
2C18	PUMP, MAIN HYDRAULIC .....	70 - 6	3C12	RETURN FLOOR, FEEDER HOUSE .....	100 - 36
2B15	PUMP, STEERING .....	60 - 14	2C16	RETURN LINES, HYDRAULIC .....	70 - 4
2I3	PUMP, STEERING COLUMN .....	90 - 28	2I7	REVERSER FOOT CONTROL, FEEDER HOUSE .....	90 - 32
1D15	PUMP, WATER .....	25 - 35	3B5	REVERSER GEAR BOX .....	100 - 4
1E7	PUSH ROD, FUEL TRANSFER PUMP .....	30 - 8	2F17	RIGHT SIDE SHIELD ASSEMBLY .....	80 - 10
1D3	PUSH RODS, ROCKER ARM .....	25 - 22	1C20	RING GEAR, FLYWHEEL .....	25 - 14
			1C17	RINGS, PISTON .....	25 - 11
	<b>R</b>		3D19	RISER, STRAW WALKER .....	110 - 24
1F16	R.H. MAIN WIRING HARNESS		1D4	ROCKER ARM COVER .....	25 - 23
	W/O GREENSTAR .....	40 - 24	1D3	ROCKER ARMS .....	25 - 22
1F19	R.H. MAIN WIRING HARNESS W/GREENSTAR .....	40 - 28	1C17	ROD, CONNECTING .....	25 - 11
1B11	RADIATOR AND COOLANT RECOVERY TANK .....	20 - 10	1D3	RODS, PUSH .....	25 - 22
2G7	RADIATOR DOOR .....	80 - 24	4E3	ROMANIAN DECALS AND LABELS .....	170 - 22
1B7	RADIATOR SHELL AND SEALS .....	20 - 6	1H14	ROOF, CAB LIGHTS .....	40 - 77
2I13	RADIO, OVERHEAD CONSOLE .....	90 - 38	2H10	ROOF, INTERIOR CAB .....	90 - 10
2I15	RADIO, SPEAKERS AND ANTENNA .....	90 - 40	1B5	ROTARY SCREEN DOOR AND SCREEN .....	20 - 4
1B5	RAKE, ROTARY SCREEN .....	20 - 4	1B3	ROTARY SCREEN DRIVE AND IDLER ARMS .....	20 - 2
3D7	RASPBAR THRESHING CYLINDER .....	110 - 12	3G11	ROTOR, TRI-ROD CHOPPER .....	130 - 4
3D13	RASPBAR TO SPIKE TOOTH CONVERSION .....	110 - 18	4E4	RUSSIAN DECALS AND LABELS .....	170 - 23
2H6	REAR AND SIDE CAB SEALS .....	90 - 6		<b>S</b>	
1I5	REAR AXLE SPINDLE HOUSING .....	50 - 2	2I17	SAFETY CHAIN, CAB PLATFORM .....	90 - 42
2C6	REAR AXLE SPINDLES (HEAVY DUTY) .....	60 - 30	4D8	SAFETY DECALS AND LOCATIONS .....	170 - 2
2C4	REAR AXLE SPINDLES (REGULAR DUTY) .....	60 - 28	4D10	SAFETY DECALS AND LOCATIONS .....	170 - 4
1I4	REAR AXLE SUPPORT .....	50 - 1	4D12	SAFETY DECALS AND LOCATIONS .....	170 - 6
1I6	REAR AXLE, ADJUSTABLE .....	50 - 3	4D14	SAFETY DECALS AND LOCATIONS .....	170 - 8
1I5	REAR AXLE, FIXED .....	50 - 2	4D16	SAFETY DECALS AND LOCATIONS .....	170 - 10
2G1	REAR CORNER PANEL, L H .....	80 - 18	4C15	SAMPLING TROUGH, GRAIN TANK .....	150 - 39
2G12	REAR LADDER LANDING LATCH ARM .....	80 - 30	1C9	SCAN TEST KIT, COOLANT .....	25 - 2
1H17	REAR LAMP ASSEMBLY (AMBER) .....	40 - 80	3C12	SCOOP, FEEDER HOUSE RETURN .....	100 - 36
2C1	REAR STEERING LINES AND HOSES .....	60 - 24	1B5	SCREEN DOOR, ROTARY .....	20 - 4
1C3	REAR SUPPORT, ENGINE MOUNTS .....	20 - 28	1B3	SCREEN DRIVE, ROTARY .....	20 - 2
1H18	REAR TURN AND TAIL LIGHTS .....	40 - 81	2B3	SEAL AND BRAKE PEDAL, PARKING .....	60 - 2
1I12	REAR WHEELS (4-WHEEL DRIVE/CAM LOBE MOTOR) .....	50 - 9	1J10	SEAL KIT, HYDROSTATIC DRIVE MOTOR .....	50 - 34
1I11	REAR WHEELS AND WHEEL WEIGHTS .....	50 - 8	2J11	SEAL, A/C COMPRESSOR .....	95 - 11
2J9	RECEIVER-DRYER, AIR CONDITIONER .....	95 - 9	1C21	SEAL, CRANKSHAFT REAR OIL .....	25 - 15
4C17	RECEIVER, POSITION, YIELD MAPPING .....	155 - 2	3H3	SEALS AND PAN, CHAFF SPREADER .....	130 - 22
2E3	REEL / BELT PICKUP MOUNTING AND SHEAVE .....	70 - 42	2H6	SEALS, CAB SIDE AND REAR .....	90 - 6
2E5	REEL DRIVE FLOW CONTROL VALVE .....	70 - 44	1J13	SEALS, CAM LOBE MOTOR .....	50 - 38
2E11	REEL DRIVE HYDRAULIC LINES AND HOSES, FRONT .....	70 - 50	3B21	SEALS, FEEDER HOUSE CONTOUR MASTER .....	100 - 20
2E9	REEL DRIVE LINES AND HOSES, L.H. .....	70 - 48	2H20	SEAT AND BACKREST, OPERATOR'S .....	90 - 20
2E15	REEL FORE-AND-AFT HYDRAULIC LINES AND HOSES, FRONT .....	70 - 54	2H20	SEAT BELT, OPERATOR'S .....	90 - 20
2E13	REEL FORE-AND-AFT HYDRAULIC LINES, L.H. .....	70 - 52	2H16	SEAT CONSOLE, PASSENGER .....	90 - 16
2D12	REEL LIFT AND CYLINDER SPEED, VALVE .....	70 - 26	2H16	SEAT CUSHIONS, PASSENGER .....	90 - 16
2E17	REEL LIFT LINES AND HOSES .....	70 - 56	2H22	SEATBELT, PASSENGER'S SEAT .....	90 - 22
2E7	REEL PUMP LINES AND HOSES, HYDRAULIC .....	70 - 46	3H23	SECONDARY COUNTERSHAFT BELT .....	140 - 18
1H3	REEL SPEED MOTOR .....	40 - 64	3I2	SECONDARY COUNTERSHAFT DRIVE .....	140 - 34
2E4	REEL/BELT PICKUP CHARGE PUMP MOUNTING AND SHEAVE .....	70 - 43	1E11	SEDIMENT BOWL, FUEL TANK .....	30 - 12
2E1	REEL/BELT PICKUP DRIVE, CHAFF SPREADER PUMP .....	70 - 40	1H11	SENSOR SWITCH, STRAW WALKER .....	40 - 73
3H10	REGULATOR, ENGINE GEARCASE PRESSURE .....	140 - 4	2J10	SENSOR, A/C EVAPORATOR HEATER .....	95 - 10
1G16	RELAY PANEL AND CIRCUIT BREAKERS .....	40 - 50	2I1	SENSOR, ARMREST CONTROL PANEL .....	90 - 26
1C22	RELIEF VALVE ENGINE OIL PRESSURE .....	25 - 16	1H6	SENSOR, CONCAVE INDICATOR .....	40 - 68
2D7	RELIEF VALVE, SOLENOID CONTROL - CONTOUR MASTER .....	70 - 20	3C14	SENSOR, CONCAVE INDICATOR .....	100 - 38
2D7	RELIEF VALVE, SOLENOID CONTROL VALVE UNLOAD MODULE .....	70 - 20	1E9	SENSOR, ENGINE TACHOMETER .....	30 - 10
1D15	REPAIR KIT, WATER PUMP .....	25 - 35	1E11	SENSOR, FUEL LEVEL .....	30 - 12
2C16	RESERVOIR LINES AND HOSES .....	70 - 4	1G10	SENSOR, GRAIN LOSS MONITOR .....	40 - 43
2B7	RESERVOIR, BRAKE LINES, MASTER CYLINDER .....	60 - 6	1G13	SENSOR, GRAIN TANK FULL BIN .....	40 - 46
			1I20	SENSOR, GROUND SPEED .....	50 - 18
			2J2	SENSOR, HEATER AND AIR CONDITIONER .....	95 - 2
			3G15	SENSOR, MAGNETIC PICKUP .....	130 - 8
			4C21	SENSOR, MASS FLOW, YIELD MAPPING .....	155 - 6
			1H8	SENSOR, MOISTURE .....	40 - 70
			4C23	SENSOR, MOISTURE, YIELD MAPPING .....	155 - 8