

HP4872

-UN-01JAN94



JOHN DEERE 9410 MAXIMIZER™ COMBINE

9410 (1998-)

(SPECIFICATIONS AND DESIGN SUBJECT TO CHANGE WITHOUT NOTICE)

NOTE

FOR 900 SERIES PLATFORM PARTS INFORMATION, REFER TO JOHN DEERE 900 SERIES PLATFORM PARTS CATALOG - PC-2104.

FOR 40 SERIES CORN HEAD PARTS INFORMATION, REFER TO JOHN DEERE 40 SERIES CORN HEAD PARTS CATALOG - PC-1223.

FOR 50A SERIES ROW-CROP HEAD PARTS INFORMATION, REFER TO JOHN DEERE 50A SERIES ROW-CROP HEAD PARTS CATALOG - PC-1747.

FOR THREE-ROLLER BELT PICKUP PARTS INFORMATION, REFER TO JOHN DEERE THREE-ROLLER BELT PICKUP PARTS CATALOG - PC-2210.

FOR 918 AND 920 DRAPER PARTS INFORMATION, REFER TO JOHN DEERE 918 AND 920 DRAPER PLATFORMS PARTS CATALOG - PC-2212.

FOR 90 SERIES CORN HEAD PARTS INFORMATION, REFER TO JOHN DEERE 90 SERIES CORN HEAD PARTS CATALOG - PC-2404.

IMPORTANT

THIS PARTS CATALOG CONTAINS PARTS INFORMATION FOR THE 9410 MAXIMIZER™ COMBINE. VINTAGE IS DETERMINED BY THE COMBINE SERIAL NUMBER OR THE PRODUCT IDENTIFICATION NUMBER (PIN). IT IS IMPORTANT THAT THE CORRECT NUMBERS BE USED WHEN ORDERING PARTS.

PRODUCT INFORMATION NUMBER (PIN) PLATE

THE PRODUCT IDENTIFICATION PLATE (PIN) IS LOCATED NEAR RIGHT-HAND SIDE OF THE TOOL BOX.
AN EXAMPLE OF THE TWO-LINES ON THIS PIN PLATE IS:

HO9410X675000
COMBINE

(FIRST LINE)

HO - MANUFACTURING UNIT (HARVESTER WORKS)

9410 - MODEL IDENTIFIER

X - CONFIGURATION CODE/MODEL IDENTIFIER SUFFIX

675000 - SEQUENTIAL NUMBER USED IN SERIAL NO. COLUMN

(SECOND LINE)

COMBINE - TYPE OF PRODUCT

COPYRIGHT (C) 2000. DEERE & COMPANY. MOLINE, ILLINOIS. ALL RIGHTS RESERVED.

PARTS LISTING INFORMATION

SERIAL NUMBER OR PRODUCT IDENTIFICATION NUMBER (PIN) INFORMATION SHOWS ON WHICH MACHINES PART MAY BE USED: FOR EXAMPLE:

- THE PART CAN BE USED ON ALL MACHINES.
- 000000 THE PART CAN BE USED ON ALL MACHINES UP TO AND INCLUDING SERIAL NUMBER LISTED.
- 000000- THE PART CAN BE USED ON ALL MACHINES BEGINNING WITH THE SERIAL NUMBER LISTED..
- 000000-000000 THE PART CAN BE USED ON ALL MACHINES BETWEEN AND INCLUDING SERIAL NUMBERS LISTED.

WHEN XXXXXX'S ARE LISTED IN PLACE OF A SERIAL NUMBER, A SERIAL NUMBER CHANGE WAS MADE, BUT THE EXACT SERIAL NUMBER IS NOT AVAILABLE WHEN THE CATALOG WAS PRINTED.

ENGINE SERIAL NUMBER PLATE

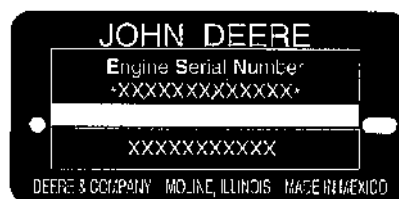
TP58281 -UN-26JAN98



DUBUQUE OPTION



SARAN OPTION



TORREÓN OPTION

TP58281

1. DESIGNATES ENGINE MANUFACTURER T-JOHN DEERE DUBUQUE WORKS
2. DESIGNATES NUMBER OF CYLINDERS AND LITERS 6068 (6.8 LITER)
3. DESIGNATES FUEL TYPE OR SPECIAL CONDITION DF NON-TURBOCHARGED DIESEL ENGINE
TF TURBOCHARGED DIESEL ENGINE
4. DESIGNATES ENGINE SERIAL NUMBER 123456
5. DESIGNATES THE ENGINE APPLICATION 6068HH051

(SPECIFICATIONS AND DESIGN SUBJECT TO CHANGE WITHOUT NOTICE)

DIRECTION ARROW

ARROWS ARE USED WITH ILLUSTRATIONS TO INDICATE THE FRONT OF THE UNIT. "RIGHT-HAND" AND "LEFT-HAND" SIDES ARE DETERMINED BY FACING IN THE DIRECTION OF MACHINE FORWARD TRAVEL.

BOX-ENCLOSED ILLUSTRATIONS

A KEY NUMBER, SHOWN IN THE PARTS LIST, IS ASSIGNED TO A BOX ENCLOSING ALL PARTS SOLD AS A SERVICE ASSEMBLY. A BOX NOT KEYED INCLUDES NON-CURRENT PARTS.

KITS

KIT INFORMATION WILL BE FOUND IMMEDIATELY FOLLOWING THE STORY IN WHICH IT IS USED. THE ILLUSTRATION IS REPEATED WITH ONLY THE KIT PARTS CALLED OUT AND WITH ALL OTHER PARTS SHOWN IN PHANTOM.

JDM REMANUFACTURED COMPONENTS

THE SERVICE PARTS LISTED IN THIS CATALOG ARE INTENDED FOR THE REPAIR OF ORIGINAL EQUIPMENT COMPONENTS. ALTHOUGH MOST SERVICE PARTS MAY BE USED TO REPAIR REMANUFACTURED COMPONENTS, THE REMANUFACTURED DESIGN MAY CHANGE PARTS SUFFICIENTLY SO THAT SERVICE PARTS ARE INADEQUATE OR NOT USABLE.

BOLT AND CAP SCREW STRENGTH IDENTIFICATION

BOLTS AND CAP SCREWS REQUIRED TO HAVE HIGH-STRENGTH QUALITIES EQUIVALENT TO SAE GRADE 8 ARE IDENTIFIED THROUGHOUT THIS CATALOG BY THE DESCRIPTION HS SAE 8. ALL STANDARD BOLTS AND CAP SCREWS ARE SAE GRADE 5 OR LOWER. BOLTS AND CAP SCREWS REQUIRED TO HAVE HIGH-STRENGTH QUALITIES EQUIVALENT TO PROPERTY CLASS 10.9 ARE IDENTIFIED THROUGHOUT THIS CATALOG BY THE DESCRIPTION HS 10.9. ALL STANDARD BOLTS AND CAP SCREWS ARE PROPERTY CLASS 8.8 OR LOWER.

SI UNITS OF MEASURE

METRIC DIMENSIONS ARE GIVEN, WHERE APPLICABLE, THROUGHOUT THIS PARTS CATALOG.

TRADEMARKS

THROUGHOUT THIS PARTS CATALOG, YOU WILL FIND THE FOLLOWING DEERE & COMPANY TRADEMARKS:

DIAL-A-SPEED™
DIAL-A-MATIC™
HARVESTRAK™
CONTOUR MASTER™

POSI-TORQ™
TORQ-GARD SUPREME®
QUIK-TATCH™

CHANGE INDICATOR LINE

CHANGES AFFECTING THE ORDERING OF PARTS ARE IDENTIFIED BY VERTICAL LINES MARKED IN THE LEFT-HAND MARGIN OF REVISED PARTS LISTING IMAGES. A LINE IS ALSO AT THE LEFT-HAND EDGE OF THE SAME PART NUMBER IN THE NUMERICAL INDEX TO SHOW THE LOCATION OF REVISED INFORMATION.

FUNCTION CODE

(EXAMPLE - FC: 5000)

FUNCTION CODES ARE LOCATED ON EACH PAGE IN THE UPPER RIGHT-HAND CORNER IN THE BOX. THE CODE LISTED IS A GROUPING CODE THAT CAN BE USED FOR WARRANTIES AND FOR DTAC TO IDENTIFY CERTAIN AREAS.

COMPLETE GOODS LISTINGS

COMPLETE GOODS ARE IN BOLD FACE TYPE. ORDER SEPARATELY. DO NOT INCLUDE ON REPLACEMENT PARTS ORDER.

FOR INDIVIDUAL HEADER PARTS CATALOGS REFER TO:

PC-2104 - PARTS CATALOG FOR JOHN DEERE 900 SERIES PLATFORMS

PC-2210 - PARTS CATALOG FOR JOHN DEERE THREE ROLLER BELT PICK-UP

PC-2212 - PARTS CATALOG FOR JOHN DEERE 918 DRAPER PLATFORMS

PC-1747 - PARTS CATALOG FOR JOHN DEERE 50A SERIES ROW-CROP HEADS

PC-1223 - PARTS CATALOG FOR JOHN DEERE 40 SERIES CORN HEADS

PC-2404 - PARTS CATALOG FOR JOHN DEERE 90 SERIES CORN HEADS

SECTION INDEX

SECTION 10 - GENERAL INFORMATION

SECTION 20 - ENGINE FAN, INTERCOOLER AND SCREENS

SECTION 24 - ENGINE

SECTION 30 - FUEL AND AIR

SECTION 40 - ELECTRICAL

SECTION 50 - POWER TRAIN

SECTION 60 - STEERING AND BRAKES

SECTION 70 - HYDRAULICS

SECTION 80 - SEPARATOR SHELL

SECTION 90 - OPERATOR'S STATION

SECTION 110 - FEEDER HOUSE

SECTION 120 - THRESHING AND SEPARATION

SECTION 121 - DRIVES

SECTION 125 - RESIDUE DISPOSAL

SECTION 130 - CLEAN GRAIN ELEVATOR, GRAIN TANK AND UNLOADING AUGER

SECTION 160 - DIAL-A-MATIC HEADER HEIGHT CONTROL

SECTION 170 - DECALS, BELTS AND CHAINS

SECTION 180 - NUMERICAL INDEX

ALPHABETICAL INDEX

GRID	A	PAGE	GRID	PAGE
3G7	A/C COMPRESSOR COVER R134A	90 - 79	1I2	ALTERNATOR, VOLTAGE REGULATOR (95 AMP) BOSCH..... 40 - 62
3G6	A/C COMPRESSOR HOSE	90 - 77	1G15	ANTENNA, SPEAKERS AND RADIO
3G5	A/C COMPRESSOR MANIFOLD.....	90 - 76	4F19	ARM, LOCKOUT, DUAL-RANGE
3G7	A/C COMPRESSOR PULLEY R134A.....	90 - 79	3F15	ARMREST (L.H.)
3G5	A/C COMPRESSOR R134A	90 - 76	3F13	ARMREST ADJUSTING MECHANISM (R.H.)
3G9	A/C COMPRESSOR SEAL KIT.....	90 - 81	1G1	ARMREST CONTROL PANEL
1B16	A/C CONDENSER, AIR INTER COOLER AND RADIATOR WITH OIL COOLER	20 - 15	1F24	ARMREST PANEL, OPERATOR'S
1H15	A/C HIGH PRESSURE SWITCH, UPPER PARTS	40 - 50	1F24	ARMREST ROCKER SWITCHES.....
1C10	ACCESS COVER, INJECTION PUMP GEAR	24 - 8	1F22	ARMREST WIRING HARNESS.....
2H13	ACCUMULATOR AND MOUNTING, ONE GALLON	70 - 32	3F11	ARMREST WITH GLOVE BOX (R.H.).....
2H13	ACCUMULATOR HOSES AND LINES (ONE GALLON).....	70 - 32	4D15	ARMS, FRAME, PRECLEANER CHAFFER
2G9	ACCUMULATOR PRESSURE GAUGE.....	70 - 2	1C7	ARMS, ROCKER
2G9	ACCUMULATOR PRESSURE GAUGE WIRING HARNESS	70 - 2	2D5	ARMS, STEERING, CAM LOBE MOTOR (STEERABLE MOTOR).....
2H11	ACCUMULATOR, ONE-HALF GALLON (SINGLE).....	70 - 30	1F24	ASHTRAY.....
1H1	ADAPTER, WIRING HARNESS (CONTOUR MASTER)	40 - 36	2I8	ASSEMBLY, SIX STACK SOLENOID CONTROL VALVE
1H3	ADAPTER, WIRING HARNESS (CONTOUR MASTER)	40 - 38	5E3	AUGER BELTS
1D17	ADAPTER,ENGINE COOLANT	24 - 40	5D7	AUGER COVERS AND CHANNEL, CROSS
2F19	ADJUSTABLE REAR AXLE.....	60 - 37	4C20	AUGER DOOR.....
2G1	ADJUSTABLE REAR AXLE STEERING TIE RODS	60 - 44	3C1	AUGER DRIVE MUD SHIELDS (R-H SIDE)
3E21	ADJUSTER, OPERATOR'S SEAT LEVER	90 - 42	4J16	AUGER DRIVE SHIELD, UPPER TAILINGS
4G3	ADJUSTING BRACKET, CYLINDER DRIVE, INTERMEDIATE.....	121 - 36	4J16	AUGER DRIVE, UPPER TAILINGS
3F13	ADJUSTING MECHANISM, ARMREST (R.H.).....	90 - 58	5B15	AUGER HOUSING, LOADING, UPPER CLEAN GRAIN
1I4	ADJUSTING MOTOR, CONCAVE.....	40 - 64	5B17	AUGER HOUSING, LOADING, UPPER CLEAN GRAIN
1H25	ADJUSTING MOTOR, SEPARATOR FAN DRIVE	40 - 60	1H11	AUGER SENSOR AND WIRING HARNESS, UNLOADING
1D24	ADJUSTING STRAP, ALTERNATOR	24 - 48	5C15	AUGER SWIVEL SUPPORT AND BRACES
1E23	AIR CLEANER AND INTAKE TUBES.....	30 - 10	5B15	AUGER TRANSITION HOUSING
1H15	AIR CLEANER PLUGGED SWITCH, UPPER PARTS	40 - 50	4J5	AUGER TROUGH, LOWER TAILINGS.....
1E12	AIR CONDITIOING COMPRESSOR BRACKET.....	24 - 62	1H11	AUGER WIRING HARNESS, UNLOADING
1G7	AIR CONDITIONER AND HEATER SWITCH.....	40 - 22	5C11	AUGER, GRAIN TANK, VERTICAL UNLOADING
1G5	AIR CONDITIONER WIRING HARNESS	40 - 20	5C24	AUGER, HORIZONTAL UNLOADING (14- AND 17-FT.).....
3E8	AIR CONDITIONING AND HEATER DUCTS	90 - 29	5D1	AUGER, HORIZONTAL UNLOADING (17-FT.).....
2J1	AIR CONDITIONING CONDENSER AND OIL COOLER	70 - 70	5C19	AUGER, HORIZONTAL UNLOADING, DRIVE GEARCASE
3G1	AIR CONDITIONING SYSTEM	90 - 72	5B19	AUGER, LOADING, CLEAN GRAIN
3G3	AIR CONDITIONING SYSTEM R134A REFRIGERANT	90 - 74	5B21	AUGER, LOADING, CLEAN GRAIN FOLD
3F24	AIR CONDITIONING/HEATER AND PRESSURIZING FAN	90 - 70	4J3	AUGER, LOWER TAILINGS
3F22	AIR CONDITIONING/HEATER HOUSING AND FILTERS.....	90 - 68	5E4	AUGER, LOWER TAILINGS, BELTS
1D9	AIR INTAKE MANIFOLD	24 - 32	5D10	AUGER, UNLOADING, DRIVE BELT GUIDE.....
1B16	AIR INTER COOLER, RADIATOR WITH OIL COOLER AND A/C CONDENSER	20 - 15	4J16	AUGER, UPPER TAILINGS.....
3F1	AIR SEAT SUSPENSION	90 - 46	5D5	AUGERS, GRAIN TANK CROSS
3F3	AIR SEAT SUSPENSION KITS.....	90 - 48	4C21	AUGERS, SHOE GRAIN SUPPLY AND HOUSING.....
3F5	AIR SEAT SUSPENSION KITS.....	90 - 50	4C23	AUGERS, SHOE GRAIN SUPPLY AND HOUSING.....
3F7	AIR SEAT SUSPENSION KITS.....	90 - 52	1F14	AUX FIELD LIGHTS SWITCH, OPTIONAL
3F9	AIR SEAT SUSPENSION KITS.....	90 - 54	1F20	AUXILIARY FIELD LIGHTING
1G5	AIR SEAT WIRING HARNESS	40 - 20	2B12	AXLE SPACERS (RING AND PINION FINAL DRIVE)
3F3	AIR SUSPENSION KITS, SEAT	90 - 48	2C1	AXLE, FINAL DRIVE (RING AND PINION)
3F5	AIR SUSPENSION KITS, SEAT	90 - 50	2B11	AXLE, FRONT
3F7	AIR SUSPENSION KITS, SEAT	90 - 52	2F19	AXLE, REAR, ADJUSTABLE.....
3F9	AIR SUSPENSION KITS, SEAT	90 - 54	2F20	AXLE, REAR, SPINDLES
3F1	AIR SUSPENSION, SEAT	90 - 46	2F17	AXLE, REAR, SUPPORT.....
1D24	ALTERNATOR ADJUSTING STRAP.....	24 - 48		B
1D24	ALTERNATOR MOUNTING BRACKETS	24 - 48	1J11	BACKSHAFT SPEED SENSOR, FEEDER HOUSE.....
1I1	ALTERNATOR, SHEAVE AND BELT BOSCH.....	40 - 61	5C5	BASE, GRAIN TANK
			1I6	BATTERIES, CABLE AND HOLDDOWN

ALPHABETICAL INDEX - CONTINUED

GRID		PAGE	GRID		PAGE
4E7	BEARING KIT, STRAW WALKERS	120 - 76	1D24	BRACKETS, ALTERNATOR MOUNTING	24 - 48
2C24	BEARING, COVER AND QUILL (STEERABLE MOTOR).....	50 - 49	4C11	BRACKETS, CONCAVE INDICATOR AND CABLE	120 - 32
1C8	BEARING,CRANKSHAFT THRUST	24 - 6	1G8	BRACKETS, LOW SHAFT SPEED SENSORS	40 - 23
2B25	BEARINGS, FINAL DRIVE (RING AND PINION)	50 - 23	2I10	BRACKETS, SOLENOID CONTROL VALVE	70 - 54
2C1	BEARINGS, FINAL DRIVE (RING AND PINION)	50 - 24	2E20	BRAKE CABLE SUPPORT BRACKET	60 - 13
2C2	BEARINGS, FINAL DRIVE (RING AND PINION)	50 - 26	2E15	BRAKE CYLINDER, MASTER	60 - 8
1C8	BEARINGS, MAIN	24 - 6	2E11	BRAKE CYLINDERS, MASTER AND BRAKE PEDALS	60 - 4
4J9	BEARINGS, TAILINGS ELEVATOR CONVEYOR	125 - 40	2E13	BRAKE LINES, MASTER CYLINDER AND RESERVOIR	60 - 6
2B18	BEARINGS, TRANSMISSION	50 - 16	2E9	BRAKE PEDAL AND SEAL, PARKING	60 - 2
2B20	BEARINGS, TRANSMISSION PINION SHAFT.....	50 - 18	2E11	BRAKE PEDALS AND CYLINDERS, MASTER	60 - 4
1C12	BEARINGS,CONNECTING ROD	24 - 10	2E17	BRAKE SHOES AND DRUM (LEFT-HAND ILLUSTRATED).....	60 - 10
5E6	BEATER BELTS SHEAVES	170 - 5	2E19	BRAKE SLAVE CYLINDER	60 - 12
4C17	BEATER COVER	120 - 38	1I8	BREAKERS, CIRCUIT, ENGINE COMPARTMENT	40 - 68
4G13	BEATER DRIVE SHEAVES AND TIGHTENER	121 - 46			
4B23	BEATER GRATE AND CONCAVE ASSEMBLY.....	120 - 20		C	
4B19	BEATER GRATE CURTAIN	120 - 16	3E7	CAB AIR FILTER AND HOUSING	90 - 28
4C15	BEATER SHAFT AND DRIVE BELT.....	120 - 36	1F11	CAB DOME LIGHT	40 - 1
5D10	BELT GUIDE, UNLOADING AUGER DRIVE	130 - 60	3D16	CAB DOOR AND GLASS	90 - 12
4G23	BELT PICKUP / REEL DRIVE, PUMP MOUNTING SHEAVE.....	121 - 56	3D14	CAB DOOR LATCH	90 - 10
1I1	BELT, ALTERNATOR AND SHEAVE BOSCH.....	40 - 61	3D6	CAB FLOOR MAT	90 - 2
4C15	BELT, DRIVE, SHAFT AND BEATER.....	120 - 36	3D18	CAB FRAME AND SUPPORT	90 - 14
3I11	BELT, FAN, DUST, LH FEEDER HOUSE	110 - 48	3D16	CAB GLASS AND DOOR	90 - 12
3E19	BELT, OPERATOR'S SEAT	90 - 40	3G12	CAB HARDWARE KIT	90 - 84
3E20	BELT, SEAT - TRAINING SEAT	90 - 41	3D12	CAB INTERIOR TRIM PANELS	90 - 8
5E4	BELTS, AIR CONDITIONER COMPRESSOR	170 - 3	3E3	CAB L.H. LANDING AND MIRROR	90 - 24
5E3	BELTS, AUGER	170 - 2	3E5	CAB LANDING AND MIRROR (R.H.).....	90 - 26
5E6	BELTS, BEATER	170 - 5	1F11	CAB LIGHT, DOME	40 - 1
5E4	BELTS, CLEAN GRAIN ELEVATOR.....	170 - 3	3E17	CAB OPERATOR'S SEAT AND BACKREST	90 - 38
5E3	BELTS, CONVEYOR FEEDER	170 - 2	3D6	CAB PANELS AND FLOOR MAT	90 - 2
5E4	BELTS, COOLING FAN.....	170 - 3	1F16	CAB POST INSTRUMENT PANEL	40 - 6
5E4	BELTS, CYLINDER DRIVE	170 - 3	3E9	CAB POST INSTRUMENT PANEL	90 - 30
5E4	BELTS, DRIVE, CYLINDER INTERMEDIATE	170 - 3	3D10	CAB REAR AND SIDE SEALS	90 - 6
5E3	BELTS, ENGINE DRIVE	170 - 2	3D20	CAB ROOF AND SUPPORTS.....	90 - 16
5E5	BELTS, FAN, CLEANING	170 - 4	1F18	CAB ROOF LIGHTS	40 - 8
5E3	BELTS, FEEDER CONVEYOR	170 - 2	3E23	CAB SEAT HEIGHT ADJUSTER (VERTICAL CONTROL).....	90 - 44
5E5	BELTS, FEEDER HOUSE	170 - 4	3D8	CAB SOUND DEADENING, FOAM AND SEALS.....	90 - 4
5E5	BELTS, HEADER AND REEL	170 - 4	1F12	CAB WIRING HARNESS.....	40 - 2
5E6	BELTS, LOWER TAILINGS AUGER.....	170 - 5	3D16	CAB, COMPLETE	90 - 12
5E4	BELTS, LOWER TAILINGS AUGER	170 - 3	4C11	CABLE, CONCAVE INDICATOR, AND BRACKETS	120 - 32
5E4	BELTS, ROTARY SCREEN.....	170 - 3	1I20	CABLE, WIRING	40 - 80
5E5	BELTS, STRAW CHOPPER	170 - 4	1I6	CABLES, BATTERY.....	40 - 66
5E5	BELTS, STRAW SPREADER	170 - 4	2B8	CABLES, HYDROSTATIC DRIVE CONTROL	50 - 4
5E5	BELTS, UNLOADING AUGERS	170 - 4	2C18	CAM LOBE MOTOR (STEERABLE MOTOR)	50 - 43
5E6	BELTS, UNLOADING SYSTEM.....	170 - 5	2D1	CAM, CARRIER, AND PISTON (STEERABLE MOTOR).....	50 - 50
5E6	BELTS, UPPER TAILINGS AUGER	170 - 5	1C9	CAMSHAFT	24 - 7
5E3	BELTS, WALKER.....	170 - 2	1C7	CAMSHAFT FOLLOWERS	24 - 5
2I3	BI-DIRECTIONAL MODULE, SOLENOID CONTROL VALVE, REEL LIFT AND CYLINDER SPEED	70 - 46	1C9	CAMSHAFT GEAR.....	24 - 7
1C14	BLOCK, CYLINDER	24 - 12	5C9	CAP, GRAIN TANK CLEAN OUT CHUTE	130 - 32
1B17	BLOCK, ENGINE COOLANT HEATER.....	20 - 16	1C19	CAP,ENGINE OIL FILL	24 - 18
2C17	BLOCK, VALVE	50 - 42	1C14	CAP,MAIN BEARING	24 - 12
1C16	BLOCK,ENGINE SHORT	24 - 14	2D3	CAPS, YOKE AND PIVOTS (STEERABLE MOTOR)	50 - 52
1I12	BOARDS, ELECTRONIC	40 - 72	2D1	CARRIER, PISTON, AND CAM (STEERABLE MOTOR).....	50 - 50
1I2	BOSCH ALTERNATOR AND VOLTAGE REGULATOR (95 AMP)	40 - 62	2D21	CASE DRAIN, 4-WHEEL DRIVE, HYDRAULIC LINES	50 - 70
3E1	BOX, TOOL	90 - 22	5C9	CASE, VERTICAL AUGER LOWER GEAR	130 - 32
2E20	BRACKET, BRAKE CABLE SUPPORT	60 - 13	1F16	CDC (COMBINE DATA CENTER)	40 - 6
3H22	BRACKET, FEEDER CONVEYOR	110 - 34	3E9	CDC (COMBINE DATA CENTER)	90 - 30
2H11	BRACKET, SINGLE ACCUMULATOR MOUNTING	70 - 30	4I21	CHAFF SPREADER (DUAL MOTOR) HOSES AND LINES	125 - 28
1H5	BRACKET, STRAW CHOPPER SENSOR	40 - 40			
1E12	BRACKET,AIR CONDITIOING COMPRESSOR	24 - 62			

ALPHABETICAL INDEX - CONTINUED

GRID		PAGE	GRID		PAGE
417	CHAFF SPREADER (DUAL MOTOR) PAN, WINGS AND SEALS.....	125 - 14	5C9	CLEAN OUT CHUTE, GRAIN TANK	130 - 32
415	CHAFF SPREADER (DUAL MOTOR) SHIELDS AND HANDLES	125 - 12	1E23	CLEANER, AIR AND INTAKE TUBES	30 - 10
4111	CHAFF SPREADER CONTROL, CHECK VALVE, ROD AND KNOB.....	125 - 18	4G15	CLEANING FAN DRIVE, SEPARATOR	121 - 48
413	CHAFF SPREADER DISC (DUAL MOTOR).....	125 - 10	4D3	CLEANING FAN INTAKE SHIELDS	120 - 48
4117	CHAFF SPREADER LINES AND FITTINGS	125 - 24	4D5	CLEANING FAN INTAKE SHIELDS	120 - 50
2G15	CHAFF SPREADER MOTOR (EATON).....	70 - 8	4D7	CLEANING FAN INTAKE SHIELDS	120 - 52
419	CHAFF SPREADER MOUNTING SUPPORT.....	125 - 16	4D1	CLEANING FAN LEAF SCREENS (CORN)	120 - 46
4119	CHAFF SPREADER, LINES, HOSES, VALVE AND PUMP.....	125 - 26	4D3	CLEANING FANS AND SHROUDS	120 - 48
4123	CHAFF SPREADER, PUMP	125 - 30	4D5	CLEANING FANS AND SHROUDS	120 - 50
4D17	CHAFFER ELEMENT.....	120 - 62	1J13	CLEANING SHOE LAMP INSTALLATION	40 - 98
4D19	CHAFFER EXTENSION ELEMENT	120 - 64	4C20	CLEANOUT DOOR	120 - 41
4D21	CHAFFER FRAME	120 - 66	4C19	CLEANOUT DOOR, CONVEYOR AUGER, HANDLE AND LATCHES	120 - 40
4D15	CHAFFER FRAME ARMS, PRECLEANER	120 - 60	3H7	CLEANOUT DOORS, FEEDER HOUSE.....	110 - 18
4D11	CHAFFER FRAME, PRE-CLEANER.....	120 - 56	3H11	CLOSURE PLATES, FEEDER HOUSE - CONTOUR MASTER	110 - 22
4D9	CHAFFER, PRE-CLEANING	120 - 54	4F9	CLUTCH, HEADER ELECTROMAGNETIC.....	121 - 18
4J15	CHAIN TIGHTENER, UPPER TAILINGS DRIVE	125 - 46	3H16	CLUTCH, SLIP, FEEDER HOUSE	110 - 28
5B7	CHAIN, CONVEYOR, CLEAN GRAIN LOWER ELEVATOR	130 - 4	2F1	COLD WEATHER START BUTTON	60 - 18
5B9	CHAIN, CONVEYOR, CLEAN GRAIN LOWER ELEVATOR	130 - 6	3F18	COLD WEATHER START BUTTON	90 - 64
3H22	CHAIN, FEEDER CONVEYOR DRIVE	110 - 34	1E21	COLD WEATHER STARTING AID	30 - 8
4J9	CHAIN, TAILINGS ELEVATOR CONVEYOR	125 - 40	1F16	COMBINE DATA CENTER	40 - 6
5D7	CHANNEL, CROSS AUGER	130 - 56	3E9	COMBINE DATA CENTER	90 - 30
5C11	CHARGE HOUSING, VERTICAL UNLOADING AUGER	130 - 34	3B13	COMPARTMENT, ENGINE	80 - 10
2J10	CHARGE PRESSURE HOSE	70 - 80	3B15	COMPARTMENT, ENGINE	80 - 12
4111	CHECK VALVE, ROD AND KNOB, CHAFF SPREADER CONTROL.....	125 - 18	3D16	COMPLETE CAB	90 - 12
5C9	CHUTE, GRAIN TANK CLEAN OUT CHUTE.....	130 - 32	3G3	COMPRESSOR AIR CONDITIONER R134A REFRIGERANT	90 - 74
1F24	CIGARETTE LIGHTER	40 - 14	3G8	COMPRESSOR HARDWARE KIT R134A	90 - 80
1F16	CIRCUIT BOARD, COMBINE DATA CENTER.....	40 - 6	3G6	COMPRESSOR, A/C, HOSE.....	90 - 77
3E9	CIRCUIT BOARD, COMBINE DATA CENTER.....	90 - 30	5E4	COMPRESSOR, AIR CONDITIONING BELTS.....	170 - 3
1110	CIRCUIT BREAKER AND RELAY, THROTTLE CONTROL PANEL.....	40 - 70	3G5	COMPRESSOR, AIR CONDITIONING, R134A	90 - 76
118	CIRCUIT BREAKER RELAYS.....	40 - 68	114	CONCAVE ADJUSTING MOTOR	40 - 64
118	CIRCUIT BREAKERS, ENGINE COMPARTMENT.....	40 - 68	4B23	CONCAVE ASSEMBLY AND BEATER GRATE,	120 - 20
1H23	CLAMPS, UNLOADING AUGER LIGHT	40 - 58	4C11	CONCAVE INDICATOR, CABLE AND BRACKETS	120 - 32
5B7	CLEAN GRAIN CONVEYOR CHAIN.....	130 - 4	4C13	CONCAVE INDICATOR, CORN AND SMALL GRAIN....	120 - 34
5B9	CLEAN GRAIN CONVEYOR CHAIN.....	130 - 6	4B17	CONCAVE, RASP BAR AND GRATE	120 - 14
5B24	CLEAN GRAIN ELEVATOR DRIVE IDLER	130 - 22	4B21	CONCAVE, RASP BAR AND GRATE	120 - 18
5B24	CLEAN GRAIN ELEVATOR DRIVE TIGHTENER	130 - 22	4C5	CONCAVE, SPIKE TOOTH	120 - 26
5B24	CLEAN GRAIN ELEVATOR DRIVE TIGHTENER AND IDLER.....	130 - 22	4C3	CONCAVE, SPIKE-TOOTH	120 - 24
5B22	CLEAN GRAIN ELEVATOR GEARCASE	130 - 20	3G3	CONDENSER, AIR CONDITIONER R134A REFRIGERANT	90 - 74
5C1	CLEAN GRAIN ELEVATOR SHIELDS, UPPER.....	130 - 24	2J1	CONDENSER, AIR CONDITIONING AND OIL COOLER	70 - 70
5B13	CLEAN GRAIN ELEVATOR UPPER SHAFT	130 - 10	1C5	CONDITIONER, COOLANT	24 - 3
5B13	CLEAN GRAIN ELEVATOR UPPER SHAFT, SPROCKET AND SHEAVE.....	130 - 10	1C12	CONNECTING ROD	24 - 10
5B13	CLEAN GRAIN ELEVATOR UPPER SHEAVE.....	130 - 10	1C12	CONNECTING ROD BEARINGS	24 - 10
5B13	CLEAN GRAIN ELEVATOR UPPER SPROCKET	130 - 10	1114	CONNECTORS, ELECTRICAL, WEATHERPACK	40 - 74
5B11	CLEAN GRAIN ELEVATOR, UPPER	130 - 8	1122	CONNECTORS, HARNESS, LOWER, FOR ENGINE	40 - 82
5B19	CLEAN GRAIN LOADING AUGER	130 - 16	1124	CONNECTORS, HARNESS, UPPER FOR ENGINE	40 - 84
5B15	CLEAN GRAIN LOADING AUGER HOUSING, UPPER	130 - 12	1E10	CONNECTORS, STARTING AID	24 - 60
5B17	CLEAN GRAIN LOADING AUGER HOUSING, UPPER	130 - 14	1J3	CONNECTORS, SUPPLEMENTARY TERMINALS	40 - 88
5B21	CLEAN GRAIN LOADING AUGER, FOLD	130 - 18	3F11	CONSOLE GLOVE BOX AND ARM REST, R.H.....	90 - 56
5B5	CLEAN GRAIN LOWER AUGER	130 - 2	1F14	CONSOLE PANEL, OVERHEAD.....	40 - 4
5B5	CLEAN GRAIN LOWER AUGER AND HINGED DOOR	130 - 2	3H11	CONTOUR MASTER - FEEDER HOUSE FRAME, TILT BEAM & CLOSURE PLATES.....	110 - 22
5B7	CLEAN GRAIN LOWER ELEVATOR	130 - 4	3117	CONTOUR MASTER DRIVE SHAFT (FOR 444,494 CORN HEAD AND 914 BPU).....	110 - 54
5B9	CLEAN GRAIN LOWER ELEVATOR	130 - 6	3I21	CONTOUR MASTER DRIVESHAFT	110 - 58
5B7	CLEAN GRAIN LOWER ELEVATOR AND CONVEYOR CHAIN	130 - 4	2H7	CONTOUR MASTER HYDRAULIC HOSES, L.H SIDE (OPTIONAL).....	70 - 26
5B9	CLEAN GRAIN LOWER ELEVATOR AND CONVEYOR CHAIN	130 - 6	3H15	CONTOUR MASTER LOCKOUT ADAPTER KIT (BELT PU & 4R CORN HEADS)	110 - 26
			2H24	CONTOUR MASTER SOLENOID CONTROL RELIEF VALVE	70 - 43
			2I21	CONTOUR MASTER TILT CYLINDER.....	70 - 66

ALPHABETICAL INDEX - CONTINUED

GRID		PAGE	GRID		PAGE
2I22	CONTOUR MASTER TILT CYLINDER HOSES AND FITTINGS	70 - 67	1E1	CRANKSHAFT DAMPER	24 - 50
1H1	CONTOUR MASTER WIRING HARNESS	40 - 36	1C8	CRANKSHAFT GEAR	24 - 6
1H3	CONTOUR MASTER WIRING HARNESS ADAPTER	40 - 38	1E1	CRANKSHAFT PULLEY	24 - 50
3H9	CONTOUR MASTER, FEEDER HOUSE SHELL, WEAR PLATES AND SEALS	110 - 20	1E6	CRANKSHAFT REAR OIL SEAL	24 - 55
3H13	CONTOUR MASTER, LOCKOUT ASSEMBLY (OPTIONAL).....	110 - 24	1C8	CRANKSHAFT THRUST BEARING	24 - 6
2B8	CONTROL CABLES, HYDROSTATIC DRIVE	50 - 4	5D3	CROSS AUGER BEARING PLATE, L.H.	130 - 52
1G1	CONTROL PANEL, ARMREST	40 - 16	5D7	CROSS AUGER COVERS AND CHANNEL.....	130 - 56
1F24	CONTROL PANEL, OPERATOR'S ARMREST	40 - 14	5D5	CROSS AUGERS, GRAIN TANK	130 - 54
1110	CONTROL PANEL, THROTTLE, RELAY AND CIRCUIT BREAKER	40 - 70	3B5	CROSS BRACES, SEPARATOR	80 - 2
2D7	CONTROL VALVE	50 - 56	3F17	CUP HOLDER	90 - 62
2I8	CONTROL VALVE MODULE, SIX STACK SOLENOID ASSEMBLY & MOUNTINGS.....	70 - 52	4B19	CURTAIN, BEATER GRATE	120 - 16
2D8	CONTROL VALVE SOLENOID (FOUR-WHEEL DR.)	50 - 57	4E11	CURTAIN, SEPARATOR	120 - 80
3G10	CONTROL VALVE, HEATER	90 - 82	4E13	CURTAIN, SEPARATOR (SPIKE-TOOTH CYLINDER)	120 - 82
2C13	CONTROL VALVE, HYDRO. DR. DISPLACMENT	50 - 38	4J1	CURTAIN, SPREADER	125 - 32
2I5	CONTROL VALVE, SOLENOID, FOR AUGER SWING..	70 - 49	5C7	CURTAINS, GRAIN TANK.....	130 - 30
1J5	CONVENIENCE OUTLET	40 - 90	2G19	CUTTING PLATFORM , 200 SERIES CONVERSION PARTS	70 - 12
1J15	CONVENIENCE OUTLET	40 - 100	1C14	CYLINDER BLOCK	24 - 12
2G19	CONVERSION PARTS, HUDRAULIC, 200 SERIES CUTTING PLATFORM.....	70 - 12	4B5	CYLINDER COVER, THRESHING	120 - 2
5E3	CONVEYOR AUGER BELTS,	170 - 2	4B9	CYLINDER DOOR (CORN AND GRAIN)	120 - 6
4C19	CONVEYOR AUGER CLEANOUT DOOR, HANDLE AND LATCHES.....	120 - 40	4B11	CYLINDER DOOR, CORN (ARGENTINA ONLY).....	120 - 8
4G11	CONVEYOR AUGERS, STRAW WALKER, SIEVE AND CHAFFER DRIVE	121 - 44	4G3	CYLINDER DRIVE ADJUSTING BRACKET, INTERMEDIATE.....	121 - 36
5B7	CONVEYOR CHAIN, CLEAN GRAIN	130 - 4	4G1	CYLINDER DRIVE BELT.....	121 - 34
5B9	CONVEYOR CHAIN, CLEAN GRAIN	130 - 6	4F17	CYLINDER DRIVE BELT, EXTENDED RANGE.....	121 - 26
1C5	COOLANT CONDITIONER	24 - 3	4F17	CYLINDER DRIVE GEAR CASE, DUAL-RANGE.....	121 - 26
1B17	COOLANT HEATER, ENGINE BLOCK.....	20 - 16	4F23	CYLINDER DRIVE INTERMEDIATE SHAFT MOUNTING, DUAL-RANGE	121 - 32
1F5	COOLANT RECOVERY TANK	30 - 16	4G1	CYLINDER DRIVE INTERMEDIATE SHEAVE, DUAL-RANGE	121 - 34
5E4	COOLING FAN BELTS	170 - 3	4F21	CYLINDER DRIVE TIGHTENER, DUAL-RANGE	121 - 30
4C13	CORN AND SMALL GRAIN CONCAVE INDICATOR	120 - 34	4F13	CYLINDER DRIVE, SINGLE RANGE	121 - 22
4H20	CORN CURTAIN AND DEFLECTORS	125 - 2	4F15	CYLINDER DRIVE, SLOW SPEED.....	121 - 24
4B11	CORN CYLINDER DOOR (ARGENTINA ONLY).....	120 - 8	1D3	CYLINDER HEAD	24 - 26
3C11	CORNER SHEET, R H FRONT	80 - 32	1D3	CYLINDER HEAD GASKET	24 - 26
3C13	CORNER SHEET, REAR, L H	80 - 34	1E7	CYLINDER HEAD REMOVAL GASKET SET.....	24 - 56
4G5	COUNTERSHAFT DRIVE, SECONDARY.....	121 - 38	1C12	CYLINDER LINER	24 - 10
5D8	COUNTERSHAFT DRIVE, UNLOADING AUGER	130 - 58	1C12	CYLINDER LINER O-RING KIT	24 - 10
4F5	COUNTERSHAFT GEARCASE, PRIMARY	121 - 14	1C5	CYLINDER LINER PACKING LUBRICANT	24 - 3
4F7	COUNTERSHAFT GEARCASE, PRIMARY	121 - 16	4B13	CYLINDER SHEAR BAR	120 - 10
1B15	COUPLING WITH HUB, ENGINE-TRANSMISSION.....	20 - 14	2I3	CYLINDER SPEED AND REEL LIFT, SOLENOID CONTROL VALVE.....	70 - 46
1C10	COVER, ACCESS, INJECTION PUMP GEAR	24 - 8	2H21	CYLINDER SPEED HYDRAULIC LINES AND HOSES ..	70 - 40
4C17	COVER, BEATER	120 - 38	2E19	CYLINDER, BRAKE SLAVE	60 - 12
3G7	COVER, COMPRESSOR A/C R134A.....	90 - 79	2E15	CYLINDER, BRAKE, MASTER	60 - 8
3B13	COVER, ENGINE.....	80 - 10	2I17	CYLINDER, DRIVE, GRAIN TANK UNLOADING.....	70 - 62
3B15	COVER, ENGINE.....	80 - 12	2H9	CYLINDER, HEADER LIFT, HYDRAULIC	70 - 28
2C7	COVER, HYDROSTATIC DRIVE PUMP.....	50 - 31	2I15	CYLINDER, HYDRAULIC, UNLOADING AUGER SWING, LINES AND HOSES	70 - 60
2C4	COVER, HYDROSTATIC PUMP (RING AND PINION)	50 - 28	2F13	CYLINDER, STEERING (4-WHEEL DRIVE).....	60 - 30
2C21	COVER, INNER	50 - 46	4B15	CYLINDER, THRESHING, RASP BAR	120 - 12
1C19	COVER, OIL FILLER OPENING	24 - 18	4C1	CYLINDER, THRESHING, SPIKE TOOTH (OPTIONAL).....	120 - 22
2C24	COVER, QUILL AND BEARING (STEERABLE MOTOR).....	50 - 49	2I21	CYLINDER, TILT - CONTOUR MASTER	70 - 66
1C6	COVER, ROCKER ARM	24 - 4	2I22	CYLINDER, TILT, HOSES AND FITTINGS - CONTOUR MASTER.....	70 - 67
1D15	COVER, THERMOSTAT	24 - 38	2I19	CYLINDER, UNLOADING AUGER SWING	70 - 64
4B5	COVER, THRESHING CYLINDER	120 - 2	2E11	CYLINDERS, MASTER BRAKE AND BRAKE PEDALS	60 - 4
1C10	COVER, TIMING GEAR.....	24 - 8			
5D7	COVERS AND CHANNEL, CROSS AUGER	130 - 56		D	
1B19	CRANKCASE, ENGINE, OIL DRAIN.....	20 - 18	1E1	DAMPER,CRANKSHAFT	24 - 50
4E9	CRANKS, STRAW WALKER, STRAW SPREADER DRIVE AND SHIELD	120 - 78	1F16	DATA CENTER, COMBINE.....	40 - 6
1C8	CRANKSHAFT	24 - 6	3E9	DATA CENTER, COMBINE.....	90 - 30

ALPHABETICAL INDEX - CONTINUED

GRID		PAGE	GRID		PAGE
1B13	ENGINE MOUNTS AND REAR SUPPORT.....	20 - 12	3F18	ETHER START BUTTON	90 - 64
3B9	ENGINE ACCESS DOOR, HANDRAILS, AND RADIATOR DOOR.....	80 - 6	1E21	ETHER STARTING AID.....	30 - 8
3B17	ENGINE ACCESS PLATFORM AND STEP	80 - 14	3G10	EVAPORATOR/HEATER UNIT	90 - 82
1H19	ENGINE AIR FILTER WARNING SWITCH.....	40 - 54	3G3	EVAPORATOR, AIR CONDITIONER R134A REFRIGERANT	90 - 74
1I8	ENGINE CIRCUIT BREAKERS	40 - 68	1D5	EXHAUST MANIFOLD	24 - 28
3B13	ENGINE COMPARTMENT.....	80 - 10	1D5	EXHAUST MANIFOLD GASKET	24 - 28
3B15	ENGINE COMPARTMENT.....	80 - 12	1F1	EXHAUST PIPE AND MUFFLER	30 - 12
1D17	ENGINE COOLANT ADAPTER.....	24 - 40	1D3	EXHAUST VALVE	24 - 26
1B12	ENGINE DRIVE	20 - 10	4F17	EXTENDED RANGE CYLINDER DRIVE BELT	121 - 26
5E3	ENGINE DRIVE BELTS	170 - 2	4G1	EXTENDED RANGE CYLINDER DRIVE BELT	121 - 34
5E3	ENGINE DRIVE SHEAVES	170 - 2	4D19	EXTENSION ELEMENT, CHAFFER	120 - 64
1B8	ENGINE FAN DRIVES.....	20 - 6			
1E5	ENGINE FLYWHEEL	24 - 54		F	
1C13	ENGINE FRONT PLATE	24 - 11			
4E23	ENGINE GEARCASE (SEPARATOR AND PUMP DRIVE)	121 - 8	1E2	FAN BELT IDLER PULLEY	24 - 51
2J3	ENGINE GEARCASE OIL FILTER ASSEMBLY	70 - 72	1E3	FAN DRIVE BELT TENSIONER	24 - 52
2J5	ENGINE GEARCASE PRESSURE REGULATOR	70 - 74	3C3	FAN DRIVE SHIELD (L-H SIDE).....	80 - 24
4E21	ENGINE GEARCASE- SEPARATOR DRIVE WET- CLUTCH AND PUMP DRIVE SHAFT	121 - 6	4G17	FAN DRIVE SPEED CONTROL LINKAGE.....	121 - 50
4E17	ENGINE GEARCASE- STRAW CHOPPER, UNLOADING DRIVE AND SEPARATOR DRIVE GEAR	121 - 2	4G19	FAN DRIVE SPEED CONTROL SHEAVE LINKAGE.....	121 - 52
4F1	ENGINE GEARCASE, SEPARATOR AND PUMP DRIVE	121 - 10	1E3	FAN DRIVE SUPPORT	24 - 52
4E19	ENGINE GEARCASE, STRAW CHOPPER, UNLOAD- ING DRIVE AND SEPARATOR DRIVE GEAR	121 - 4	3F24	FAN, AIR CONDITIONING/HEATER AND PRESSURIZING	90 - 70
1E8	ENGINE MAJOR OVERHAUL GASKET SET.....	24 - 58	5E5	FAN, CLEANING, BELTS	170 - 4
1C4	ENGINE OIL.....	24 - 2	4G15	FAN, DRIVE, CLEANING, SEPARATOR	121 - 48
1C14	ENGINE OIL BY-PASS VALVE.....	24 - 12	3I9	FAN, DUST, LH SIDE FEEDER HOUSE	110 - 46
1D17	ENGINE OIL COOLER	24 - 40	1B8	FAN, ENGINE.....	20 - 6
1C20	ENGINE OIL DIPSTICK.....	24 - 19	4D3	FANS, CLEANING	120 - 48
1C20	ENGINE OIL DIPSTICK TUBE	24 - 19	4D5	FANS, CLEANING	120 - 50
1C21	ENGINE OIL DRAIN HOSE.....	24 - 20	3I3	FEED PLATE LATCH HANDLE	110 - 40
1C21	ENGINE OIL DRAIN VALVE	24 - 20	5E3	FEEDER CONVEYOR BELTS.....	170 - 2
1C19	ENGINE OIL FILL CAP	24 - 18	3H22	FEEDER CONVEYOR BRACKET.....	110 - 34
1C6	ENGINE OIL FILL PLUG	24 - 4	3H22	FEEDER CONVEYOR DRIVE CHAIN	110 - 34
1C23	ENGINE OIL FILTER	24 - 22	3H24	FEEDER CONVEYOR DRIVE CHAIN, TIGHTENER AND GUIDES.....	110 - 36
1C21	ENGINE OIL PAN	24 - 20	3H22	FEEDER CONVEYOR IDLER	110 - 34
1C18	ENGINE OIL PUMP	24 - 17	1J11	FEEDER HOUSE BACKSHAFT SPEED SENSOR	40 - 96
1C18	ENGINE OIL PUMP GEAR	24 - 17	5E5	FEEDER HOUSE BELTS	170 - 4
1C18	ENGINE OIL PUMP HOUSING.....	24 - 17	3H5	FEEDER HOUSE DRIVE SHIELDS - CONTOUR MASTER	110 - 16
1C18	ENGINE OIL PUMP INTAKE.....	24 - 17	3H3	FEEDER HOUSE DRIVE SHIELDS AND SAFETY STOP	110 - 14
1C12	ENGINE PISTON	24 - 10	4G21	FEEDER HOUSE DRIVE TIGHTENER.....	121 - 54
1H19	ENGINE PLUGGED AIR FILTER WARNING SWITCH ..	40 - 54	3H1	FEEDER HOUSE DRIVE TIGHTENER (FIXED SPEED)	110 - 12
3B13	ENGINE RAILS	80 - 10	3I11	FEEDER HOUSE DUST FAN BELT, LH	110 - 48
3B15	ENGINE RAILS	80 - 12	3I9	FEEDER HOUSE DUST FAN, LH SIDE.....	110 - 46
1C16	ENGINE SHORT BLOCK.....	24 - 14	3H20	FEEDER HOUSE FLOOR	110 - 32
1H15	ENGINE TACH SENSOR, UPPER PARTS	40 - 50	3H7	FEEDER HOUSE FRAME AND FRONT SHAFT	110 - 18
1E11	ENGINE TACHOMETER SENSOR.....	24 - 61	3H11	FEEDER HOUSE FRAME, TILT BEAM & CLOSURE PLATES, CONTOUR MASTER.....	110 - 22
1F16	ENGINE TEMPERATURE GAUGE	40 - 6	3I19	FEEDER HOUSE FRONT DRIVE SHAFT, SHEAVE AND MOUNTINGS (FIXED SPEED WITH	110 - 56
3E9	ENGINE TEMPERATURE GAUGE	90 - 30	3I7	FEEDER HOUSE RETURN FLOOR.....	110 - 44
1H15	ENGINE TEMPERATURE SENDER, UPPER PARTS	40 - 50	3E13	FEEDER HOUSE REVERSER FOOT CONTROL	90 - 34
1H17	ENGINE TEMPERATURE SENDING SWITCH LOWER PARTS.....	40 - 52	3G20	FEEDER HOUSE REVERSER FOOT CONTROL	110 - 6
1H17	ENGINE TEMPERATURE SENDING SWITCH 6068, LOWER PARTS.....	40 - 52	3H9	FEEDER HOUSE SHELL - CONTOUR MASTER	110 - 20
1H15	ENGINE UPPER HARNESS, UPPER PARTS	40 - 50	3H16	FEEDER HOUSE SLIP CLUTCH	110 - 28
1H15	ENGINE UPPER HARNESS, UPPER PARTS	40 - 50	3I15	FEEDER HOUSE UPPER DRIVE SHAFT, SHEAVE AND MOUNTING (FIXED SPEED WITH	110 - 52
1C5	ENGINE VALVE STEM LUBRICANT	24 - 3	3H18	FEEDER HOUSE UPPER SHAFT	110 - 30
1D1	ENGINE VENTILATING SYSTEM.....	24 - 24	2G17	FEEDER HOUSE VARIABLE DRIVE HYDRAULIC HOSE	70 - 10
1B15	ENGINE-TRANSMISSION COUPLING WITH HUB	20 - 14	3H9	FEEDER HOUSE WEAR PLATES - CONTOUR MASTER	110 - 20
1H17	ENGINE, LOWER, HARNESS, LOWER PARTS	40 - 52			
2F1	ETHER START BUTTON	60 - 18			

ALPHABETICAL INDEX - CONTINUED

<i>GRID</i>		<i>PAGE</i>	<i>GRID</i>		<i>PAGE</i>
3F11	GLOVE BOX AND ARM REST, R.H.	90 - 56	5D20	HEADER HEIGHT CONTROL, ELECTRIC HARNESS, DIAL-A-MATIC	160 - 4
4D13	GRAIN LEAK KIT	120 - 58	2H9	HEADER LIFT CYLINDER, HYDRAULIC	70 - 28
5C7	GRAIN TANK AND CURTAINS	130 - 30	2H5	HEADER LIFT LINES AND HOSES	70 - 24
5C5	GRAIN TANK BASE	130 - 28	2I1	HEADER LIFT MODULE, SOLENOID CONTROL VALVE	70 - 44
5D5	GRAIN TANK CROSS AUGERS	130 - 54	2B6	HEADER LIFT/LOWER SWITCH	50 - 2
1H23	GRAIN TANK DUAL LEVEL MONITOR HARNESS	40 - 58	1A8	HEADERS	10 - 7
1H21	GRAIN TANK LEVEL MONITOR	40 - 56	1G7	HEATER AND AIR CONDITIONER SWITCH	40 - 22
1H21	GRAIN TANK LIGHT	40 - 56	3E8	HEATER AND AIR CONDITIONING DUCTS	90 - 29
1H20	GRAIN TANK LIGHTS	40 - 55	3F22	HEATER AND AIR CONDITIONING HOUSING AND FILTERS	90 - 68
5C3	GRAIN TANK TOP	130 - 26	3G10	HEATER SYSTEM	90 - 82
1H21	GRAIN TANK UNLOADING AUGER LIMIT SWITCH	40 - 56	1G5	HEATER WIRING HARNESS	40 - 20
2I17	GRAIN TANK UNLOADING DRIVE CYLINDER	70 - 62	3F24	HEATER/AIR CONDITIONING AND PRESSURIZING FAN	90 - 70
2I17	GRAIN TANK UNLOADING DRIVE CYLINDER MOUNTING	70 - 62	1B17	HEATER, COOLANT, ENGINE BLOCK	20 - 16
5C11	GRAIN TANK VERTICAL UNLOADING AUGER	130 - 34	3E23	HEIGHT ADJUSTER, CAB SEAT	90 - 44
5C11	GRAIN TANK VERTICAL UNLOADING AUGER HOUSING	130 - 34	3G3	HIGH PRESSURE SWITCH, AIR CONDITIONER R134A REFRIGERANT	90 - 74
1H21	GRAIN TANK WIRING HARNESS, LIGHT, LIMIT SWITCH AND LEVEL MONITOR	40 - 56	5B5	HINGED DOOR, LOWER AUGER, CLEAN GRAIN	130 - 2
4B17	GRATE AND RASP BAR CONCAVE	120 - 14	1I6	HOLDDOWN, BATTERY	40 - 66
4B21	GRATE AND RASP BAR CONCAVE	120 - 18	3F17	HOLDER, CUP	90 - 62
4B19	GRATE, BEATER CURTAIN	120 - 16	3B23	HOOD, REAR	80 - 20
4C7	GRATE, FINGER, SPIKE-TOOTH	120 - 28	5C24	HORIZONTAL UNLOADING AUGER (14- AND 17-FT.)	130 - 48
4H24	GUARD AND STRAW SPREADER MOUNTING	125 - 6	5D1	HORIZONTAL UNLOADING AUGER (17-FT.)	130 - 50
5D10	GUIDE, DRIVE BELT, UNLOADING AUGER	130 - 60	5C17	HORIZONTAL UNLOADING AUGER HUB SUPPORT	130 - 40
3H24	GUIDES, TIGHTENER AND FEEDER CONVEYOR DRIVE CHAIN	110 - 36	5C19	HORIZONTAL UNLOADING AUGER DRIVE GEARCASE	130 - 42
H					
3E5	HAND RAIL, R.H.	90 - 26	5C20	HORIZONTAL UNLOADING AUGER HOUSING (14- AND 17-FT.)	130 - 44
3D14	HANDLE, CAB DOOR	90 - 10	5C22	HORIZONTAL UNLOADING AUGER HOUSING (14- AND 17-FT.)	130 - 46
4C19	HANDLE, LATCHES AND CONVEYOR AUGER CLEANOUT DOOR	120 - 40	5C13	HORIZONTAL UNLOADING AUGER SWIVEL	130 - 36
4I5	HANDLES AND SHIELDS, CHAFF SPREADER (DUAL MOTOR)	125 - 12	2F1	HORN BUTTON	60 - 18
3D22	HANDRAIL, OPERATOR'S PIVOTING PLATFORM	90 - 18	3F18	HORN BUTTON	90 - 64
3B9	HANDRAILS, REAR LADDER LANDING	80 - 6	5D13	HOSE FITTINGS, LOWER LUBE, UNLOADING AUGER	130 - 64
3G12	HARDWARE KIT, CAB	90 - 84	5D15	HOSE FITTINGS, UPPER LUBE, UNLOADING AUGER	130 - 66
3G8	HARDWARE KIT, COMPRESSOR R134A	90 - 80	3G6	HOSE, A/C COMPRESSOR	90 - 77
1I22	HARNESS CONNECTORS, LOWER, FOR ENGINE	40 - 82	2J10	HOSE, CHARGE PRESSURE	70 - 80
1I24	HARNESS CONNECTORS, UPPER, FOR ENGINE	40 - 84	2G17	HOSE, HYDRAULIC, VARIABLE DRIVE, FEEDER HOUSE	70 - 10
1H5	HARNESS FOR REAR LIGHTS AND SHIELDS	40 - 40	1D1	HOSE, VENTILATION SYSTEM	24 - 24
1H1	HARNESS WIRING, MAIN, L.H. CENTER	40 - 36	2H13	HOSES AND LINES, ACCUMULATOR (ONE GALLON)	70 - 32
1H17	HARNESS, LOWER, ENGINE, LOWER PARTS	40 - 52	4I21	HOSES AND LINES, CHAFF SPREADER (DUAL MOTOR)	125 - 28
1H17	HARNESS, LOWER, ENGINE, 6068 LOWER PARTS	40 - 52	2D19	HOSES AND LINES, FOUR WHEEL DRIVE HYDRAU LIC, L.H.	50 - 68
1H15	HARNESS, UPPER ENGINE, UPPER PARTS	40 - 50	2H5	HOSES AND LINES, HEADER LIFT	70 - 24
1H15	HARNESS, UPPER, ENGINE, UPPER PARTS	40 - 50	2H21	HOSES AND LINES, HYDRAULIC, CYLINDER SPEED	70 - 40
1G5	HARNESS, WIRING, A/C, HEATER AND AIRSEAT	40 - 20	2D17	HOSES AND LINES, HYDRO. OIL COOLER	50 - 66
1H3	HARNESS, WIRING, MAIN, L.H. CENTER	40 - 38	2D9	HOSES AND LINES, OIL, HYDROSTATIC DRIVE, LOWER (2&4 WHEEL DRIVE)	50 - 58
1H7	HARNESS, WIRING, R.H. MAIN	40 - 42	2G20	HOSES AND LINES, REEL DRIVE, HYD., FRONT	70 - 14
1G3	HARNESS, WIRING, STEERING COLUMN	40 - 18	2G11	HOSES AND LINES, REEL DRIVE, HYDRAULIC, L.H. SIDE	70 - 4
1F16	HARVESTRAK	40 - 6	2G24	HOSES AND LINES, REEL LIFT	70 - 18
3E9	HARVESTRAK	90 - 30	2F5	HOSES AND LINES, STEERING, FRONT	60 - 22
1H13	HARVESTRAK MONITOR WIRING HARNESS	40 - 48	2F11	HOSES AND LINES, STEERING, REAR	60 - 28
1D3	HEAD, CYLINDER	24 - 26			
5E5	HEADER BELTS	170 - 4			
4F9	HEADER ELECTROMAGNETIC CLUTCH	121 - 18			
2H10	HEADER HEIGHT CONTROL VALVE	70 - 29			
5D19	HEADER HEIGHT CONTROL VALVE	160 - 3			
5D18	HEADER HEIGHT CONTROL, DIAL-A-MATIC HYDRAULIC LINE AND VALVE BLOCK	160 - 2			

ALPHABETICAL INDEX - CONTINUED

GRID		PAGE	GRID		PAGE
2115	HOSES AND LINES, UNLOADING AUGER SWING HYDRAULIC CYLINDER	70 - 60	2I23	HYDRAULIC LINES AND HOSES, WET CLUTCH OIL COOLER	70 - 68
2I23	HOSES AND LINES, WET CLUTCH OIL COOLER, HYDRAULIC	70 - 68	2D21	HYDRAULIC LINES, CASE DRAIN, 4-WHEEL DRIVE	50 - 70
1F3	HOSES AND RADIATOR	30 - 14	2H3	HYDRAULIC LINES, REEL FORE-AND-AFT, L.H. SIDE	70 - 22
3G3	HOSES, AIR CONDITIONER R134A REFRIGERANT	90 - 74	1H15	HYDRAULIC OIL TEMP. SWITCH, UPPER PARTS	40 - 50
2I17	HOSES, GRAIN TANK UNLOADING DRIVE CYLINDER	70 - 62	2H19	HYDRAULIC PRESSURE LINES AND HOSES	70 - 38
3G10	HOSES, HEATER	90 - 82	2I13	HYDRAULIC PUMP FEEDER HOUSE / REEL DRIVE ..	70 - 58
2H7	HOSES, HYDRAULIC, CONTOUR MASTER (L.H.) (OPTIONAL)	70 - 26	2I13	HYDRAULIC PUMP REEL / FEEDER HOUSE DRIVE ..	70 - 58
2G22	HOSES, HYDRAULIC, REEL PUMP	70 - 16	2I11	HYDRAULIC PUMP, MAIN	70 - 56
2F7	HOSES, LINES, STEERING, L.H. SIDE	60 - 24	2H15	HYDRAULIC RETURN LINES	70 - 34
4J24	HOSES, LUBE, L. H.	125 - 56	2H17	HYDRAULIC RETURN LINES, UPPER	70 - 36
4J22	HOSES, LUBE, R. H.	125 - 54	2H23	HYDRAULIC/HYDROSTATIC OIL RESERVOIR	70 - 42
2D11	HOSES, OIL, HYDROSTATIC DRIVE, LOWER (FOUR WHEEL DRIVE)	50 - 60	2G18	HYDRAULIC, MAIN, FILTER	70 - 11
2D13	HOSES, OIL, HYDROSTATIC DRIVE, LOWER (TWO WHEEL DRIVE)	50 - 62	2B6	HYDRO LEVER ASSEMBLY	50 - 2
2H19	HOSES, PRESSURE, HYDRAULIC	70 - 38	2C13	HYDRO. DR. DISPLACEMENT CONTROL VALVE	50 - 38
2E23	HOSES, STEERING, UPPER	60 - 16	2D17	HYDRO. OIL COOLER LINES AND HOSES	50 - 66
2I22	HOSES, TILT CYLINDER - CONTOUR MASTER	70 - 67	2C11	HYDROSTATIC DRIVE CHARGE PUMP (RING AND PINION)	50 - 35
2H17	HOSES, UPPER RETURN, HYDRAULIC	70 - 36	2C12	HYDROSTATIC DRIVE CHARGE PUMP (RING AND PINION)	50 - 36
2D15	HOSES, UPPER, HYDROSTATIC DRIVE (FOUR WHEEL DRIVE)	50 - 64	2B8	HYDROSTATIC DRIVE CONTROL CABLES	50 - 4
2D23	HOSES, 4-WHEEL DRIVE	50 - 72	2D15	HYDROSTATIC DRIVE HOSES, UPPER (FOUR WHEEL DRIVE)	50 - 64
4C21	HOUSING AND SHOE GRAIN SUPPLY AUGERS	120 - 42	2B6	HYDROSTATIC DRIVE LEVER AND CABLE	50 - 2
4C23	HOUSING AND SHOE GRAIN SUPPLY AUGERS	120 - 44	2E1	HYDROSTATIC DRIVE MOTOR	50 - 74
2B17	HOUSING COVER, TRANSMISSION AND DIFFERENTIAL	50 - 14	2C15	HYDROSTATIC DRIVE MOTOR, FIXED (RING AND PINION)	50 - 40
3F22	HOUSING, AIR CONDITIONER/HEATER AND FILTERS	90 - 68	2C6	HYDROSTATIC DRIVE MOTOR, KIT (RING AND PINION)	50 - 30
3E7	HOUSING, CAB AIR FILTER	90 - 28	2D11	HYDROSTATIC DRIVE OIL LINES AND HOSES, LOWER (FOUR WHEEL DRIVE)	50 - 60
5C11	HOUSING, CHARGE, VERTICAL UNLOADING AUGER	130 - 34	2D13	HYDROSTATIC DRIVE OIL LINES AND HOSES, LOWER (TWO WHEEL DRIVE)	50 - 62
1I12	HOUSING, ELECTRONIC ASSEMBLY	40 - 72	2D9	HYDROSTATIC DRIVE OIL LINES AND HOSES, LOWER (2&4 WHEEL DRIVE)	50 - 58
2B25	HOUSING, FINAL DRIVE (RING AND PINION)	50 - 23	2C10	HYDROSTATIC DRIVE PISTON	50 - 34
1E6	HOUSING, FLYWHEEL	24 - 55	2E3	HYDROSTATIC DRIVE PUMP - MAIN HYDRAULIC PUMP CONNECTING HARDWARE	50 - 76
3F22	HOUSING, HEATER/AIR CONDITIONING AND FILTERS	90 - 68	2C7	HYDROSTATIC DRIVE PUMP COVER	50 - 31
5C20	HOUSING, HORIZONTAL UNLOADING AUGER (14- AND 17-FT.)	130 - 44	2C4	HYDROSTATIC DRIVE PUMP COVER (RING AND PINION)	50 - 28
5C22	HOUSING, HORIZONTAL UNLOADING AUGER (14- AND 17-FT.)	130 - 46	2C4	HYDROSTATIC DRIVE PUMP SHAFT (RING AND PINION)	50 - 28
2C8	HOUSING, HYDROSTATIC PUMP (RING AND PINION)	50 - 32	2H23	HYDROSTATIC/HYDRAULIC RESERVOIR	70 - 42
2F22	HOUSING, SPINDLE, REAR AXLE	60 - 40			
4J7	HOUSING, TAILINGS ELEVATOR	125 - 38		I	
2B13	HOUSING, TRANSMISSION AND DIFFERENTIAL	50 - 9	1B4	IDLER ARMS, ROTARY SCREEN DRIVE	20 - 2
4J13	HOUSING, UPPER TAILINGS AUGER	125 - 44	1E2	IDLER PULLEY, DRIVE BELT	24 - 51
1C18	HOUSING, ENGINE OIL PUMP	24 - 17	1E2	IDLER PULLEY, FAN BELT	24 - 51
1D15	HOUSING, THERMOSTAT	24 - 38	5B24	IDLER, DRIVE, CLEAN GRAIN ELEVATOR	130 - 22
2G17	HYDRAULIC HOSE, VARIABLE DRIVE, FEEDER HOUSE	70 - 10	3H22	IDLER, FEEDER CONVEYOR	110 - 34
2H7	HYDRAULIC HOSES, CONTOUR MASTER (L.H.) (OPTIONAL)	70 - 26	2F1	IGNITION SWITCH	60 - 18
2G22	HYDRAULIC HOSES, REEL PUMP	70 - 16	3F18	IGNITION SWITCH	90 - 64
2H21	HYDRAULIC LINES AND HOSES, CYLINDER SPEED	70 - 40	1D13	IMPELLER, WATER PUMP	24 - 36
2H5	HYDRAULIC LINES AND HOSES, HEADER LIFT	70 - 24	1E7	IN CHASSIS OVERHAUL GASKET SET	24 - 56
2D19	HYDRAULIC LINES AND HOSES, L.H., FOUR WH EEL DRIVE	50 - 68	4C11	INDICATOR CABLE AND BRACKETS, CONCAVE	120 - 32
2H1	HYDRAULIC LINES AND HOSES, REEL FORE-AND-AFT, FRONT	70 - 20	4C13	INDICATOR, CONCAVE, CORN AND SMALL GRAIN ..	120 - 34
			4C9	INDICATOR, SPIKE TOOTH	120 - 30
			1C19	INLET OIL FILL	24 - 18
			1D14	INLET, WATER PUMP	24 - 37
			2C21	INNER COVER	50 - 46
			2B18	INPUT SHAFT, TRANSMISSION	50 - 16

ALPHABETICAL INDEX - CONTINUED

<i>GRID</i>		<i>PAGE</i>	<i>GRID</i>		<i>PAGE</i>
1F16	INSTRUMENT PANEL, CAB POST	40 - 6	3B21	LATCH ARM, REAR LADDER LANDING	80 - 18
3E9	INSTRUMENT PANEL, CAB POST	90 - 30	3I3	LATCH HANDLE, FEED PLATE	110 - 40
3I13	INTAKE SHIELD.....	110 - 50	3D14	LATCH, CAB DOOR	90 - 10
4D3	INTAKE SHIELDS, CLEANING FAN.....	120 - 48	5C9	LATCH, GRAIN TANK CLEAN OUT CHUTE	130 - 32
4D5	INTAKE SHIELDS, CLEANING FAN.....	120 - 50	4C19	LATCHES, HANDLE AND CONVEYOR AUGER CLEANOUT DOOR	120 - 40
1E23	INTAKE TUBES AND AIR CLEANER.....	30 - 10	4D1	LEAF SCREENS, CLEANING FAN (CORN)	120 - 46
1D3	INTAKE VALVE	24 - 26	4D13	LEAK KIT, GRAIN	120 - 58
1C18	INTAKE, ENGINE OIL PUMP	24 - 17	3C19	LEFT SIDE FRONT SHIELD ASSEMBLY	80 - 40
1B10	INTERCOOLER	20 - 8	3C23	LEFT SIDE SHIELD ASSEMBLY	80 - 44
4G3	INTERMEDIATE DRIVE ADJUSTING BRACKET.....	121 - 36	3F15	LEFT-HAND ARMREST.....	90 - 60
4F23	INTERMEDIATE SHAFT MOUNTING, CYLINDER DRIVE, DUAL-RANGE.....	121 - 32	5F4	LEFT-HAND DECALS	170 - 28
4G1	INTERMEDIATE SHEAVE, CYLINDER DRIVE, DUAL-RANGE	121 - 34	1H23	LEVEL MONITOR WIRING HARNESS, DUAL.....	40 - 58
			1H23	LEVEL MONITOR, DUAL	40 - 58
			1H21	LEVEL MONITOR, GRAIN TANK	40 - 56
			2B6	LEVER ASSEMBLY, GEARSHIFT	50 - 2
			3E21	LEVER, ADJUSTER, OPERATOR'S SEAT	90 - 42
			2B15	LEVER, GEARSHIFT	50 - 12
			3E11	LEVER, GEARSHIFT	90 - 32
			2H9	LIFT CYLINDER, HEADER, HYDRAULIC	70 - 28
			1F12	LIGHT SWITCH (WIRING HARNESS).....	40 - 2
			1F11	LIGHT, CAB DOME	40 - 1
			1H21	LIGHT, GRAIN TANK.....	40 - 56
			1H23	LIGHT, UNLOADING AUGER	40 - 58
			1F24	LIGHTER, CIGARETTE	40 - 14
			1F20	LIGHTING, AUXILIARY, FIELD	40 - 10
			1F18	LIGHTS, CAB ROOF	40 - 8
			1J9	LIGHTS, FIELD	40 - 94
			1F19	LIGHTS, FRONT AND REAR TAIL.....	40 - 9
			1F19	LIGHTS, FRONT AND REAR TURN	40 - 9
			1H20	LIGHTS, ROW	40 - 55
			1J7	LIGHTS, TRANSPORT WARNING	40 - 92
			1H21	LIMIT SWITCH, GRAIN TANK UNLOADING AUGER	40 - 56
			2E5	LINE, RESERVOIR RETURN	50 - 78
			1C12	LINER, CYLINDER.....	24 - 10
			4I17	LINES AND FITTING, CHAFF SPREADER	125 - 24
			4I21	LINES AND HOSES, CHAFF SPREADER (DUAL MOTOR).....	125 - 28
			2D19	LINES AND HOSES, FOUR WHEEL DRIVE HYDRAU LIC, L.H.....	50 - 68
			2H5	LINES AND HOSES, HEADER LIFT	70 - 24
			2H21	LINES AND HOSES, HYDRAULIC, CYLINDER SPEED	70 - 40
			2D17	LINES AND HOSES, HYDRO. OIL COOLER	50 - 66
			2D9	LINES AND HOSES, OIL, HYDROSTATIC DRIVE, LOWER (2&4 WHEEL DRIVE)	50 - 58
			2G20	LINES AND HOSES, REEL DRIVE, HYD., FRONT.....	70 - 14
			2G11	LINES AND HOSES, REEL DRIVE, HYDRAULIC, L.H. SIDE	70 - 4
			2G24	LINES AND HOSES, REEL LIFT	70 - 18
			2F5	LINES AND HOSES, STEERING, FRONT.....	60 - 22
			2F11	LINES AND HOSES, STEERING, REAR	60 - 28
			2I15	LINES AND HOSES, UNLOADING AUGER SWING HYDRAULIC CYLINDER.....	70 - 60
			2I23	LINES AND HOSES, WET CLUTCH OIL COOLER, HYDRAULIC.....	70 - 68
			2D23	LINES AND HOSES, 4-WHEEL DRIVE	50 - 72
			2E13	LINES, BRAKE, RESERVOIR, MASTER CYLINDER	60 - 6
			1D7	LINES, FUEL INJECTION	24 - 30
			2F7	LINES, HOSES, STEERING, L.H. SIDE.....	60 - 24
			4I19	LINES, HOSES, VALVE AND PUMP, CHAFF SPREADER	125 - 26
			2G22	LINES, HYDRAULIC, REEL PUMP.....	70 - 16
			2D11	LINES, OIL, HYDROSTATIC DRIVE, LOWER (FOUR WHEEL DRIVE)	50 - 60
K					
4H17	KEY STOCK, METRIC KIT	121 - 74			
4I16	KIT, ADJUSTING SCREW, REEL DRIVE FLOW CONTROL VALVE.....	125 - 23			
3F3	KIT, AIR SUSPENSION SEAT	90 - 48			
3F5	KIT, AIR SUSPENSION SEAT	90 - 50			
3F7	KIT, AIR SUSPENSION SEAT	90 - 52			
3F9	KIT, AIR SUSPENSION SEAT	90 - 54			
1C12	KIT, CYLINDER LINER O-RING	24 - 10			
1I16	KIT, ELECTRICAL CONNECTOR SERVICE	40 - 76			
1I18	KIT, ELECTRICAL CONNECTOR SERVICE	40 - 78			
4D13	KIT, GRAIN LEAK	120 - 58			
2C6	KIT, HYDROSTATIC DRIVE MOTOR (RING AND PINION)	50 - 30			
3H15	KIT, LOCKOUT ADAPTER - CONTOUR MASTER (BELT PU & 4R CORN HEADS)	110 - 26			
4H17	KIT, METRIC KEY STOCK	121 - 74			
4I15	KIT, REEL DRIVE FLOW CONTROL VALVE	125 - 22			
2F14	KIT, STEERING CYLINDER	60 - 31			
4E7	KIT, STRAW WALKER BEARING.....	120 - 76			
1I20	KIT, TERMINAL AND WIRING	40 - 80			
1D19	KIT,FUEL FILTER SERVICE	24 - 42			
1D10	KIT,TURBOCHARGER HARDWARE	24 - 33			
1D13	KIT,WATER PUMP REPAIR	24 - 36			
4H13	KNIFEBANK AND STRAW CHOPPER HOUSING (-655100).....	121 - 70			
L					
1G23	L H MAIN WIRING HARNESS, L H FRONT	40 - 35A			
1H5	L.H. AND R.H. MAIN WIRING HARNESS, REAR	40 - 40			
1F12	L.H. AND R.H. RADIO SPEAKERS (WIRING HARNESS).....	40 - 2			
1G21	L.H. MAIN WIRING HARNESS, FRONT.....	40 - 34			
1H1	L.H. MAIN WIRING HARNESS, L.H. CENTER	40 - 36			
3C9	L.H. SERVICE ACCESS SHIELD	80 - 30			
2F7	L.H. SIDE HOSES AND LINES, STEERING	60 - 24			
3D24	LADDER AND LATCH, OPERATOR'S PLATFORM	90 - 20			
3B19	LADDER, REAR.....	80 - 16			
1J18	LAMP ASSEMBLY, REAR - L.H. SIDE.....	40 - 103			
1J17	LAMP ASSEMBLY, REAR - R.H. SIDE	40 - 102			
1J13	LAMP, INSTALLATION	40 - 98			
3E3	LANDING AND MIRROR, CAB, L.H.	90 - 24			
3D22	LANDING, OPERATOR'S PIVOTING PLATFORM.....	90 - 18			
3E5	LANDING, R.H.	90 - 26			
3B19	LANDING, REAR LADDER	80 - 16			
3D24	LATCH AND LADDER, OPERATOR'S PLATFORM	90 - 20			

ALPHABETICAL INDEX - CONTINUED

GRID		PAGE	GRID		PAGE
2D13	LINES, OIL, HYDROSTATIC DRIVE, LOWER (TWO WHEEL DRIVE)	50 - 62	1D5	MANIFOLD, EXHAUST	24 - 28
2H19	LINES, PRESSURE, HYDRAULIC	70 - 38	1D9	MANIFOLD, AIR INTAKE	24 - 32
2H15	LINES, RETURN, HYDRAULIC	70 - 34	2E15	MASTER BRAKE CYLINDER	60 - 8
2F9	LINES, STEERING R.H. SIDE	60 - 26	2E13	MASTER CYLINDER, RESERVOIR, BRAKE LINES	60 - 6
1E19	LINES, TANK FUEL	30 - 6	4H17	METRIC KEY STOCK KIT	121 - 74
1D11	LINES, TURBOCHARGER OIL	24 - 34	3E3	MIRROR AND LANDING, CAB, L.H.	90 - 24
2H17	LINES, UPPER RETURN, HYDRAULIC	70 - 36	3E5	MIRROR, R.H.	90 - 26
2B15	LINKAGE, GEARSHIFT	50 - 12	1H1	MODULE, LOGIC	40 - 36
3E11	LINKAGE, GEARSHIFT	90 - 32	1H3	MODULE, LOGIC	40 - 38
4G19	LINKAGE, SHEAVE, FAN DRIVE SPEED CONTROL	121 - 52	2I8	MODULE, SIX STACK SOLENOID CONTROL VALVE ASSEMBLY & MOUNTINGS	70 - 52
4G17	LINKAGE, SPEED CONTROL, FAN DRIVE	121 - 50	1H13	MONITOR WIRING HARNESS, HARVESTRAK	40 - 48
5B19	LOADING AUGER, CLEAN GRAIN	130 - 16	1H21	MONITOR, LEVEL, GRAIN TANK	40 - 56
5B21	LOADING AUGER, CLEAN GRAIN, FOLD	130 - 18	1D22	MOTOR 12 VOLT, STARTER	24 - 46
3H15	LOCKOUT ADAPTER KIT - CONTOUR MASTER (BELT PU & 4R CORN HEADS)	110 - 26	1I4	MOTOR, ADJUSTING, CONCAVE	40 - 64
4F19	LOCKOUT ARM, DUAL-RANGE	121 - 28	1H25	MOTOR, ADJUSTING, SEPARATOR FAN DRIVE	40 - 60
3H13	LOCKOUT ASSEMBLY - CONTOUR MASTER (OPTIONAL)	110 - 24	2C18	MOTOR, CAM LOBE (STEERABLE MOTOR)	50 - 43
1H1	LOGIC MODULE	40 - 36	2G15	MOTOR, CHAFF SPREADER (EATON)	70 - 8
1H3	LOGIC MODULE	40 - 38	2E1	MOTOR, HYDROSTATIC DRIVE	50 - 74
1G8	LOW SHAFT SPEED SENSORS AND BRACKETS	40 - 23	2C15	MOTOR, HYDROSTATIC DRIVE, FIXED (RING AND PINION)	50 - 40
5B5	LOWER AUGER, CLEAN GRAIN	130 - 2	1J1	MOTOR, REEL SPEED, AND BRACKET	40 - 86
5B7	LOWER ELEVATOR, CLEAN GRAIN	130 - 4	4I9	MOUNTING SUPPORT, CHAFF SPREADER	125 - 16
5B9	LOWER ELEVATOR, CLEAN GRAIN	130 - 6	2I17	MOUNTING, GRAIN TANK UNLOADING DRIVE CYLINDER	70 - 62
1H17	LOWER HARNESS FOR ENGINE LOWER PARTS	40 - 52	2H23	MOUNTING, HYDRAULIC/HYDRO OIL RESERVOIR	70 - 42
1H17	LOWER HARNESS FOR 6068 ENGINE LOWER PARTS	40 - 52	2H13	MOUNTING, ONE GALLON ACCUMULATOR	70 - 32
2D11	LOWER HYDROSTATIC DRIVE OIL LINES AND HOSES (FOUR WHEEL DRIVE)	50 - 60	4H24	MOUNTING, STRAW SPREADER AND GUARD	125 - 6
2D13	LOWER HYDROSTATIC DRIVE OIL LINES AND HOSES (TWO WHEEL DRIVE)	50 - 62	2I19	MOUNTING, UNLOADING AUGER SWING CYLINDER	70 - 64
2D9	LOWER HYDROSTATIC DRIVE OIL LINES AND HOSES (2&4 WHEEL DRIVE)	50 - 58	2I8	MOUNTINGS, SIX STACK SOLENOID CONTROL VALVE	70 - 52
4J3	LOWER TAILINGS AUGER	125 - 34	2I6	MOUNTINGS, SOLENOID CONTROL VALVE MODULE ASSEMBLY	70 - 50
5E6	LOWER TAILINGS AUGER BELT	170 - 5	1B13	MOUNTS, ENGINE, AND REAR SUPPORT	20 - 12
4J10	LOWER TAILINGS AUGER CHAIN TIGHTENER	125 - 41	3C3	MUD AND FAN DRIVE SHIELDS (L-H SIDE)	80 - 24
4J11	LOWER TAILINGS AUGER DRIVE TIGHTENER	125 - 42	3C3	MUD SHIELDS (L-H SIDE)	80 - 24
4J3	LOWER TAILINGS AUGER SHAFT	125 - 34	2D22	MUD SHIELDS (POWERED REAR WHEELS)	50 - 71
4J3	LOWER TAILINGS AUGER SHAFT TIGHTENER	125 - 34	3C17	MUD SHIELDS (R.H. SIDE)	80 - 38
4J5	LOWER TAILINGS AUGER TROUGH	125 - 36	3C1	MUD SHIELDS, AUGER DRIVE (R-H SIDE)	80 - 22
5D13	LUBE HOSE FITTINGS, LOWER, UNLOADING AUGER	130 - 64	1F1	MUFFLER AND EXHAUST PIPE	30 - 12
5D15	LUBE HOSE FITTINGS, UPPER, UNLOADING AUGER	130 - 66	N		
4J24	LUBE HOSES L. H.	125 - 56	3F11	NEUTRAL START SWITCH	90 - 56
4J22	LUBE HOSES R. H.	125 - 54	1D6	NOZZLE, FUEL INJECTION	24 - 29
2B18	LUBE PUMP, TRANSMISSION	50 - 16	O		
1C5	LUBRICANT, CYLINDER LINER PACKING	24 - 3	3G6	O-RINGS, A/C COMPRESSOR HOSE	90 - 77
1C5	LUBRICANT, ENGINE VALVE STEM	24 - 3	2J1	OIL COOLER AND AIR CONDITIONING CONDENSER SER	70 - 70
M			2D17	OIL COOLER LINES AND HOSES, HYDRO.	50 - 66
1C14	MAIN BEARING CAP	24 - 12	1D17	OIL COOLER, ENGINE	24 - 40
1C8	MAIN BEARINGS	24 - 6	1B19	OIL DRAIN, ENGINE CRANKCASE	20 - 18
3B5	MAIN FRAME, SEPARATOR	80 - 2	1C19	OIL FILL INLET	24 - 18
2G18	MAIN HYDRAULIC FILTER	70 - 11	1C19	OIL FILLER OPENING COVER	24 - 18
2E3	MAIN HYDRAULIC PUMP - HYDROSTATIC DRIVE PUMP CONNECTING HARDWARE	50 - 76	1C23	OIL FILTER, ENGINE	24 - 22
5D19	MAIN VALVE BLOCK SOLENOID DIAL-A-MATIC HEADER HEIGHT CONTROL	160 - 3	2J3	OIL FILTER, ENGINE GEARCASE, ASSEMBLY	70 - 72
1G17	MAIN WIRING HARNESS, L.H. FRONT (S.N. -680100)	40 - 32	2D11	OIL HOSES, HYDROSTATIC DRIVE, LOWER (FOUR WHEEL DRIVE)	50 - 60
1H3	MAIN WIRING HARNESS, L.H. CENTER	40 - 38	2D13	OIL HOSES, HYDROSTATIC DRIVE, LOWER (TWO WHEEL DRIVE)	50 - 62
2C23	MANIFOLD AND PACKINGS	50 - 48	2D9	OIL LINES AND HOSES, HYDROSTATIC DRIVE, LOWER (2&4 WHEEL DRIVE)	50 - 58
3G5	MANIFOLD, A/C COMPRESSOR	90 - 76			

ALPHABETICAL INDEX - CONTINUED

GRID		PAGE	GRID		PAGE
2D11	OIL LINES HYDROSTATIC DRIVE, LOWER (FOUR WHEEL DRIVE)	50 - 60	3H11	PLATES, CLOSURE, FEEDER HOUSE - CONTOUR MASTER	110 - 22
2D13	OIL LINES HYDROSTATIC DRIVE, LOWER (TWO WHEEL DRIVE)	50 - 62	3H9	PLATES, WEAR, FEEDER HOUSE - CONTOUR MASTER	110 - 20
1D11	OIL LINES, TURBOCHARGER	24 - 34	3B17	PLATFORM AND STEP, ENGINE ACCESS	80 - 14
1C10	OIL PRESSURE RELIEF VALVE	24 - 8	3D24	PLATFORM LADDER AND LATCH, OPERATOR'S	90 - 20
1H17	OIL PRESSURE SENDING UNIT, LOWER PARTS	40 - 52	3B13	PLATFORM, ENGINE	80 - 10
1H17	OIL PRESSURE SENDING UNIT, 6068 LOWER PARTS.....	40 - 52	3B15	PLATFORM, ENGINE	80 - 12
3G5	OIL, A/C COMPRESSOR	90 - 76	2G19	PLATFORM, 200 SERIES CUTTING, CONVERSION PARTS	70 - 12
1C4	OIL, ENGINE	24 - 2	1C6	PLUG,ENGINE OIL FILL	24 - 4
2H13	ONE GALLON ACCUMULATOR AND MOUNTING.....	70 - 32	1H19	PLUGGED AIR FILTER WARNING SWITCH.....	40 - 54
2H11	ONE-HALF GALLON ACCUMULATOR (SINGLE)	70 - 30	1H19	PLUGGED ENGINE AIR FILTER WARNING SWITCH ..	40 - 54
1F24	OPERATOR'S ARMREST PANEL	40 - 14	1H9	PLUGGING SENSING SWITCH, STRAW WALKER	40 - 44
3D18	OPERATOR'S CAB FRAME AND SUPPORT	90 - 14	1F16	POST INSTRUMENT PANEL, CAB	40 - 6
1F14	OPERATOR'S OVERHEAD CONSOLE PANEL.....	40 - 4	3E9	POST INSTRUMENT PANEL, CAB	90 - 30
3D22	OPERATOR'S PIVOTING PLATFORM AND HANDRAI LS.....	90 - 18	4D11	PRE-CLEANER CHAFFER FRAME	120 - 56
3D22	OPERATOR'S PIVOTING PLATFORM LANDING	90 - 18	4D9	PRE-CLEANING CHAFFER.....	120 - 54
3D24	OPERATOR'S PLATFORM LADDER AND LATCH	90 - 20	4D15	PRECLEANER CHAFFER FRAME ARMS	120 - 60
3E17	OPERATOR'S SEAT AND BACKREST	90 - 38	2G9	PRESSURE GAUGE, ACCUMULATOR	70 - 2
3E23	OPERATOR'S SEAT HEIGHT ADJUSTER	90 - 44	2J10	PRESSURE HOSE, CHARGE.....	70 - 80
3E19	OPERATOR'S SEAT SEATBELT	90 - 40	2J5	PRESSURE REGULATOR, ENGINE GEARCASE.....	70 - 74
3E15	OPERATORS SEAT SHROUDS	90 - 36	2H19	PRESSURE, HYDRAULIC, LINES AND HOSES	70 - 38
3E15	OPTIONAL SEAT.....	90 - 36	3F24	PRESSURIZING FAN AND AIR CONDITIONING/ HEATER FAN	90 - 70
1J5	OUTLET, CONVENIENCE	40 - 90	4F5	PRIMARY COUNTERSHAFT GEARCASE	121 - 14
1J15	OUTLET, CONVENIENCE.....	40 - 100	4F7	PRIMARY COUNTERSHAFT GEARCASE	121 - 16
1J4	OUTLET, ELECTRICAL SERVICE	40 - 89	4F3	PRIMARY COUNTERSHAFT, GEARCASE AND DRIVE SHAFT	121 - 12
1F12	OVERHEAD CONSOLE (WIRING HARNESS).....	40 - 2	4F11	PRIMARY COUNTERSHAFT, SUPPORTS AND VARI- ABLE SHEAVE, REG. AND EXTENDED RANGE.....	121 - 20
1F14	OVERHEAD CONSOLE PANEL	40 - 4	3G7	PULLEY, A/C COMPRESSOR R134A	90 - 79
P					
1C5	PACKING, LUBRICANT, CYLINDER LINER	24 - 3	4G5	PULLEY, SECONDARY COUNTERSHAFT DRIVE	121 - 38
2C23	PACKINGS AND MANIFOLD	50 - 48	1D14	PULLEY, WATER PUMP.....	24 - 37
4J13	PADDLES, UPPER TAILINGS AUGER	125 - 44	1E1	PULLEY,CRANKSHAFT.....	24 - 50
1C21	PAN, ENGINE OIL	24 - 20	4F1	PUMP DRIVE AND SEPARATOR, GEARCASE	121 - 10
4E3	PAN, SHAKER	120 - 72	4E21	PUMP DRIVE SHAFT AND SEPARATOR DRIVE WET-CLUTCH, GEARCASE	121 - 6
4I7	PAN, WINGS AND SEALS, CHAFF SPREADER (DUAL MOTOR).....	125 - 14	4G23	PUMP MOUNTING SHEAVE, REEL / BELT PICKUP DRIVE	121 - 56
1F24	PANEL, ARMREST	40 - 14	4I23	PUMP, CHAFF SPREADER	125 - 30
1F16	PANEL, CAB POST INSTRUMENT	40 - 6	1C18	PUMP, ENGINE OIL	24 - 17
3E9	PANEL, CAB POST INSTRUMENT	90 - 30	1E17	PUMP, FUEL	30 - 4
1F14	PANEL, OVERHEAD CONSOLE.....	40 - 4	1D7	PUMP, FUEL INJECTION	24 - 30
3D6	PANELS, CAB	90 - 2	1D21	PUMP, FUEL TRANSFER	24 - 44
3D12	PANELS, CAB INTERIOR TRIM	90 - 8	2C11	PUMP, HYDROSTATIC DRIVE CHARGE (RING AND PINION)	50 - 35
1H1	PARK BRAKE SWITCH.....	40 - 36	2C12	PUMP, HYDROSTATIC DRIVE CHARGE (RING AND PINION)	50 - 36
2E9	PARKING BRAKE PEDAL AND SEAL	60 - 2	2I11	PUMP, MAIN HYDRAULIC	70 - 56
2E9	PEDAL AND SEAL, PARKING BRAKE	60 - 2	2G22	PUMP, REEL, HYDRAULIC HOSES.....	70 - 16
3E13	PEDAL, REVERSER FOOT CONTROL, FEEDER HOUSE.....	90 - 34	2E21	PUMP, STEERING.....	60 - 14
3G20	PEDAL, REVERSER FOOT CONTROL, FEEDER HOUSE.....	110 - 6	2I13	PUMP,FEEDER HOUSE / REEL DRIVE	70 - 58
2E11	PEDALS, BRAKE AND CYLINDERS, MASTER.....	60 - 4	2I13	PUMP,REEL / FEEDER HOUSE DRIVE	70 - 58
2C2	PINION, FINAL DRIVE (RING AND PINION)	50 - 26	1D13	PUMP,WATER	24 - 36
1C12	PISTON RINGS	24 - 10	1D21	PUSH ROD,FUEL TRANSFER PUMP	24 - 44
2D1	PISTON, CAM, AND CARRIER (STEERABLE MOTOR).....	50 - 50	1C7	PUSH RODS	24 - 5
1C12	PISTON, ENGINE	24 - 10	Q		
2C10	PISTON, HYDROSTATIC DRIVE	50 - 34	2C24	QUILL, BEARING AND COVER (STEERABLE MOTOR).....	50 - 49
2D3	PIVOTS, CAPS AND YOKE (STEERABLE MOTOR)	50 - 52			
1C14	PLASTIC GASKET	24 - 12			
5D3	PLATE, CROSS AUGER BEARING, L.H.....	130 - 52			