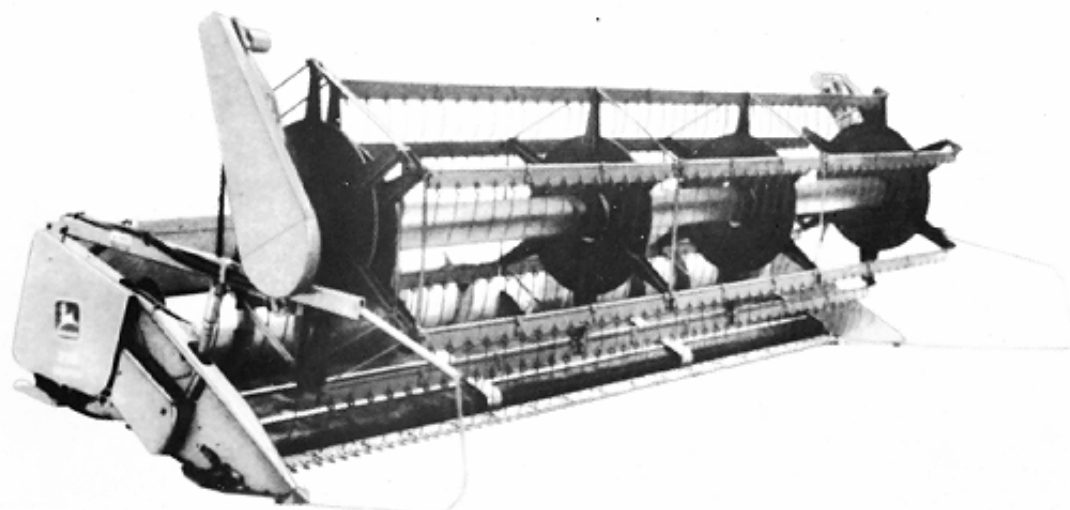


HP1521

-UN-01JAN94



HP1521

JOHN DEERE 918 DRAPER PLATFORM ( -635900)  
JOHN DEERE 920 DRAPER PLATFORM (646301- )

(SPECIFICATIONS AND DESIGN SUBJECT TO CHANGE WITHOUT NOTICE)

## SERIAL NUMBER PLATE

USE ALL NUMBERS, LETTERS, AND SPACES SHOWN ON THE SERIAL NUMBER PLATE IN WARRANTY CORRESPONDENCE.

918 DRAPER PLATFORMS (625801- )

ON THESE 918 DRAPER PLATFORMS, SERIAL NUMBER PLATE IS LOCATED ON THE LEFT-HAND SIDE OF THE FRAME.

*EXAMPLE: H00918D625801  
918 DRAPER PLATFORM*

(FIRST LINE) H0 - FACTORY (HARVESTER WORKS)  
918 - PLATFORM MODEL  
D - CONFIGURATION/MODEL SUFFIX  
625801 - SEQUENCE (SERIAL) NUMBER  
(SECOND LINE) 918 DRAPER PLATFORM - PRODUCT TYPE

ALL INFORMATION ABOVE ALSO PERTAINS TO THE 920 DRAPER PLATFORM

### **IMPORTANT**

THIS PARTS CATALOG CONTAINS COMPLETE PARTS INFORMATION ON THE DRAPER PLATFORMS. IT IS IMPORTANT THAT THE CORRECT SERIAL NUMBER BE USED WHEN ORDERING PARTS.

*COPYRIGHT (C) 2000. DEERE & COMPANY. MOLINE, ILLINOIS.  
ALL RIGHTS RESERVED*

## DIRECTION ARROW

ARROWS ARE USED WITH ILLUSTRATIONS TO INDICATE THE FRONT OF THE UNIT. "RIGHT-HAND" AND "LEFT-HAND" SIDES ARE DETERMINED BY FACING IN THE DIRECTION OF MACHINE FORWARD TRAVEL.

## BOX-ENCLOSED ILLUSTRATIONS

A KEY NUMBER, SHOWN IN THE PARTS LIST, IS ASSIGNED TO A BOX ENCLOSING ALL PARTS SOLD AS A SERVICE ASSEMBLY. A BOX NOT KEYED INCLUDES NON-CURRENT PARTS.

## KITS

KIT INFORMATION CAN BE FOUND IMMEDIATELY AFTER THE STORY IN WHICH IT IS USED. THE ILLUSTRATION IS REPEATED WITH ONLY THE KIT PARTS CALLED OUT AND WITH ALL OTHER PARTS SHOWN IN PHANTOM.

## JDM REMANUFACTURED COMPONENTS

THE SERVICE PARTS LISTED IN THIS CATALOG ARE INTENDED FOR THE REPAIR OF ORIGINAL EQUIPMENT COMPONENTS. ALTHOUGH MOST SERVICE PARTS MAY BE USED TO REPAIR REMANUFACTURED COMPONENTS, THE REMANUFACTURED DESIGN MAY CHANGE PARTS SUFFICIENTLY SO THAT SERVICE PARTS ARE INADEQUATE OR NOT USABLE.

## BOLT AND CAP SCREW STRENGTH IDENTIFICATION

BOLTS AND CAP SCREWS REQUIRED TO HAVE HIGH-STRENGTH QUALITIES EQUIVALENT TO SAE GRADE 8 ARE IDENTIFIED THROUGHOUT THIS CATALOG BY THE DESCRIPTION HS SAE 8. ALL STANDARD BOLTS AND CAP SCREWS ARE SAE GRADE 5 OR LOWER. BOLTS AND CAP SCREWS REQUIRED TO HAVE HIGH-STRENGTH QUALITIES EQUIVALENT TO PROPERTY CLASS 10.9 ARE IDENTIFIED THROUGHOUT THIS CATALOG BY THE DESCRIPTION HS 10.9. ALL STANDARD BOLTS AND CAP SCREWS ARE PROPERTY CLASS 8.8 OR LOWER.

## SI UNITS OF MEASURE

METRIC DIMENSIONS ARE GIVEN, WHERE APPLICABLE, THROUGHOUT THIS PARTS CATALOG.

## TRADEMARKS

THROUGHOUT THIS PARTS CATALOG, YOU WILL FIND THE FOLLOWING DEERE & COMPANY TRADEMARKS:

DIAL-A-SPEED™  
DIAL-A-MATIC™  
HARVESTRAK™

POSI-TORQ™  
TORQ-GARD SUPREME®  
QUIK-TATCH™

## CHANGE INDICATOR LINE

CHANGES AFFECTING THE ORDERING OF PARTS ARE IDENTIFIED BY VERTICAL LINES MARKED IN THE L. H. MARGIN OF REVISED PARTS LISTING IMAGES. A LINE IS ALSO AT THE LEFT-HAND EDGE OF THE SAME PART NUMBER IN THE NUMERICAL INDEX TO SHOW THE LOCATION OF REVISED INFORMATION.

## FUNCTION CODE

(EXAMPLE - FC: 5000)

FUNCTION CODES ARE LOCATED ON EACH PAGE IN THE UPPER RIGHT-HAND CORNER. THE CODE LISTED IS A GROUPING CODE THAT CAN BE USED FOR WARRANTIES AND FOR DTAC TO IDENTIFY CERTAIN AREAS.

## COMPLETE GOODS LISTINGS

COMPLETE GOODS ARE IN BOLD FACE TYPE. ORDER SEPARATELY. DO NOT INCLUDE ON REPLACEMENT PARTS ORDER.

## SECTION INDEX

SECTION 05 - GENERAL INFORMATION

SECTION 10 - REEL

SECTION 15 - FRAME, STRIPPERS, DIVIDERS AND PLATES

SECTION 20 - KNIFE, CUTTERBAR AND DRIVES

SECTION 25 - AUGER AND DRIVE

SECTION 30 - HYDRAULICS

SECTION 35 - SHIELDS

SECTION 40 - BELTS, CHAINS, SHEAVES, SPROCKETS AND DECALS

SECTION 45 - NUMERICAL INDEX

## ALPHABETICAL INDEX

GRID	PAGE	GRID	PAGE
<b>A</b>			
A14	ARM, REEL 918 ( -635900) .....	10-4	
A14	ARM, REEL 920 (646301-656300) .....	10-4	
A15	ARM, REEL 920 (656301- ) .....	10-5	
C24	AUGER AND SHAFT - 920 (656301- ) .....	25-18	
D1	AUGER BEARINGS 920 (646301-656300) .....	25-20	
D3	AUGER BEARINGS 920 (656301- ) .....	25-22	
C24	AUGER COVER - 920 (656301- ) .....	25-18	
D1	AUGER CRANK 920 (646301-656300) .....	25-20	
D3	AUGER CRANK 920 (656301- ) .....	25-22	
C18	AUGER DRIVE RH(920) USE WITH UNIVERSAL DRIVE (685101- ) .....	25-12	
C12	AUGER DRIVE 920 (646301-656300) .....	25-6	
C14	AUGER DRIVE 920 (656301-666300) .....	25-8	
C16	AUGER DRIVE 920 (666301-685100) .....	25-10	
C8	AUGER DRIVE, CROSS 918 ( -635100) .....	25-2	
C10	AUGER DRIVE, CROSS 918 (635101-635900) .....	25-4	
D1	AUGER FINGERS 920 (646301-656300) .....	25-20	
D3	AUGER FINGERS 920 (656301- ) .....	25-22	
D6	AUGER FLIGHT EXTENSIONS (920)(656301- ) .....	25-25	
D5	AUGER FLIGHT EXTENSIONS 920 ( -655300) .....	25-24	
C24	AUGER HUB - 920 (656301- ) .....	25-18	
D1	AUGER SHAFTS 920 (646301-656300) .....	25-20	
D3	AUGER SHAFTS 920 (656301- ) .....	25-22	
C22	AUGER, CROSS AND SHAFT 920 (646301-656300) .....	25-16	
D7	AUGER, CROSS, BRACKETS 918 ( -635900) .....	25-26	
D11	AUGER, CROSS, BRACKETS 920 (646301- ) .....	25-30	
D9	AUGER, CROSS, BRACKETS 920 (646301-656300) .....	25-28	
<b>B</b>			
D1	BEARINGS, AUGER 920 (646301-656300) .....	25-20	
D3	BEARINGS, AUGER 920 (656301- ) .....	25-22	
C20	BEARINGS, SHAFTS, FINGERS, CROSS AUGER 918 ( -635900) .....	25-14	
B22	BOLTED KNIVES AND GUARDS 918 ( -635900) .....	20-12	
C1	BRACKET, KNIFE STORAGE AND SHIELD 920 (646301- ) .....	20-16	
B24	BRACKET, STORAGE, SHIELD AND SPARE KNIFE 918 ( -635900) .....	20-14	
<b>B6</b>			
B6	BRACKET, STUBBLE LIGHT 918 ( -635900) .....	15-15	
<b>B7</b>			
B7	BRACKET, STUBBLE LIGHT 920 (646301- ) .....	15-16	
<b>D7</b>			
D7	BRACKETS, CROSS AUGER 918 ( -635900) .....	25-26	
<b>D11</b>			
D11	BRACKETS, CROSS AUGER 920 (646301- ) .....	25-30	
<b>D9</b>			
D9	BRACKETS, CROSS AUGER 920 (646301-656300) .....	25-28	
<b>C</b>			
<b>B14</b>			
B14	CASE, KNIFE DRIVE 918 ( -635900) .....	20-4	
<b>E19</b>			
E19	CHAINS, DRIVE, SPROCKETS, TIGHTENERS R.H. 918 ( -635900) .....	40-1	
<b>E20</b>			
E20	CHAINS, DRIVE, SPROCKETS, TIGHTENERS R.H. 920 (646301- ) .....	40-2	
<b>C18</b>			
C18	CLUTCH, AUGER DRIVE (RH) UNIVERSAL DRIVE.....	25-12	
<b>B6</b>			
B6	CONNECTOR, STUBBLE LIGHT 918 ( -635900) .....	15-15	
<b>C24</b>			
C24	COVER, AUGER -920 (656301- ) .....	25-18	
<b>D1</b>			
D1	CRANK, AUGER 920 (646301-656300) .....	25-20	
<b>D3</b>			
D3	CRANK, AUGER 920 (656301- ) .....	25-22	
<b>C22</b>			
C22	CROSS AUGER AND SHAFT 920 (646301-656300) .....	25-16	
<b>D7</b>			
D7	CROSS AUGER BRACKETS 918 ( -635900) .....	25-26	
<b>D11</b>			
D11	CROSS AUGER BRACKETS 920 (646301- ) .....	25-30	
<b>D9</b>			
D9	CROSS AUGER BRACKETS 920 (646301-656300) .....	25-28	
<b>C8</b>			
C8	CROSS AUGER DRIVE 918 ( -635100) .....	25-2	
<b>C10</b>			
C10	CROSS AUGER DRIVE 918 (635101-635900) .....	25-4	
<b>C20</b>			
C20	CROSS AUGER, BEARINGS, SHAFTS, FINGERS 918 ( -635900) .....	25-14	
<b>B16</b>			
B16	CUTTERBAR DRIVE 918 ( -635900) .....	20-6	
<b>B17</b>			
B17	CUTTERBAR DRIVE 920 (646301-656300) .....	20-7	
<b>B18</b>			
B18	CUTTERBAR DRIVE 920 (656301-685100) .....	20-8	
<b>B19</b>			
B19	CUTTERBAR DRIVE (920) (685101- ) .....	20-9	
<b>A15</b>			
A15	CYLINDER ROD EXTENSION 920 (656301- ) .....	10-5	
<b>E10</b>			
E10	CYLINDER, REEL LIFT MASTER.....	30-22	
<b>E5</b>			
E5	CYLINDER, REEL LIFT SLAVE 918 ( -635900) .....	30-16	
<b>E5</b>			
E5	CYLINDER, REEL LIFT SLAVE 920 (646301- ) .....	30-16	
<b>D</b>			
<b>E23</b>			
E23	DECALS, R.H. AND L.H. 918 ( -635900) .....	40-6	
<b>F1</b>			
F1	DECALS, R.H. AND L.H. 920 (646301- ) .....	40-8	
<b>B4</b>			
B4	DIVIDER POINTS 918 ( -635900).....	15-13	



## ALPHABETICAL INDEX - CONTINUED

<i>GRID</i>		<i>PAGE</i>	<i>GRID</i>		<i>PAGE</i>
B13	IDLER, KNIFE DRIVE 920 (656301- )	20-2	E10	MASTER CYLINDER, REEL LIFT	30-22
	<b>K</b>		D13	METRIC KEY STOCK KIT	25-32
D13	KEY STOCK, METRIC KIT	25-32	E11	MOTOR, HYDROSTATIC DRIVE REEL HYDRAULIC	30-23
D13	KIT, METRIC KEY STOCK	25-32	E8	MOTOR, REEL (EATON) (655583- )	30-20
B14	KNIFE DRIVE CASE 918 ( -635900)	20-4	E6	MOTOR, REEL (ROSS NO. K85921) ( -655582)	30-18
B12	KNIFE DRIVE IDLER 918 ( -635900)	20-1	E15	MOUNTING, END SHIELD 918 (635101-635900)	35-2
B12	KNIFE DRIVE IDLER 920 (646301-656300)	20-1	E16	MOUNTING, END SHIELD 920 (646301-656300)	35-3
B13	KNIFE DRIVE IDLER 920 (656301- )	20-2	A16	MOUNTINGS, PICKUP REEL 918 ( -635900)	10-6
B12	KNIFE DRIVE TIGHTENER 918 ( -635900)	20-1	A16	MOUNTINGS, PICKUP REEL 920 (646301- )	10-6
B12	KNIFE DRIVE TIGHTENER 920 (646301-656300)	20-1		<b>P</b>	
B13	KNIFE DRIVE TIGHTENER 920 (656301- )	20-2	A16	PICKUP REEL DRIVE SHAFT 920 (646301- )	10-6
C1	KNIFE STORAGE BRACKET AND SHIELD 920 (646301- )	20-16	A16	PICKUP REEL DRIVE SHAFTS 918 ( -635900)	10-6
B24	KNIFE, SPARE, STORAGE BRACKET AND SHIELD 918 ( -635900)	20-14	A13	PICKUP REEL ECCENTRIC SPIDER 918 (635900- )	10-3
B22	KNIVES, BOLTED AND GUARDS 918 ( -635900)	20-12	A13	PICKUP REEL ECCENTRIC SPIDER 920 (646301- )	10-3
	<b>L</b>		E3	PICKUP REEL HYDRAULIC DRIVE REEL HOSES 918 ( -635900)	30-14
D22	LIFT LINES, REEL 918 ( -635900)	30-8	A16	PICKUP REEL MOUNTINGS 918 ( -635900)	10-6
D24	LIFT LINES, REEL 920 (646301-656300)	30-10	A16	PICKUP REEL MOUNTINGS 920 (646301- )	10-6
E1	LIFT LINES, REEL 920 (656301- )	30-12	A16	PICKUP REEL SPROCKETS 918 ( -635900)	10-6
B8	LIGHTS, MARKER 918 ( -635900)	15-17	A16	PICKUP REEL SPROCKETS 920 (646301- )	10-6
B9	LIGHTS, MARKER 920 (646301- )	15-18	A11	PICKUP REEL 918 ( -635900)	10-1
B6	LIGHTS, STUBBLE (OPTIONAL) 918 ( -635900)	15-15	A12	PICKUP REEL 920 (646301- )	10-2
B7	LIGHTS, STUBBLE (OPTIONAL) 920 (646301- )	15-16	E4	PICKUP REEL, HYDRAULIC DRIVE REEL HOSES 920 (646301- )	30-15
D18	LINES, HYDRAULIC REEL DRIVE 920 (646301-656300)	30-4	A15	PIN, REEL ARM 920 (656301- )	10-5
D20	LINES, HYDRAULIC REEL DRIVE 920 (656301- )	30-6	B5	PLATES, FEED 918 ( -635900)	15-14
D16	LINES, REEL DRIVE 918 ( -635900)	30-2	B4	POINTS, DIVIDER 918 ( -635900)	15-13
D22	LINES, REEL LIFT 918 ( -635900)	30-8		<b>R</b>	
D24	LINES, REEL LIFT 920 (646301-656300)	30-10	A14	REEL ARM 918 ( -635900)	10-4
E1	LINES, REEL LIFT 920 (656301- )	30-12	A14	REEL ARM 920 (646301-656300)	10-4
	<b>M</b>		A15	REEL ARM 920 (656301- )	10-5
C7	MAIN DRIVE SHAFT	25-1	D16	REEL DRIVE LINES 918 ( -635900)	30-2
B8	MARKER LIGHTS 918 ( -635900)	15-17	D18	REEL DRIVE LINES 920 (646301-656300)	30-4
B9	MARKER LIGHTS 920 (646301- )	15-18	D20	REEL DRIVE LINES 920 (656301- )	30-6
			E3	REEL HOSES, HYDRAULIC DRIVE, PICKUP REEL 918 ( -635900)	30-14
			E4	REEL HOSES, HYDRAULIC DRIVE, PICKUP REEL 920 (646301- )	30-15

**ALPHABETICAL INDEX - CONTINUED**

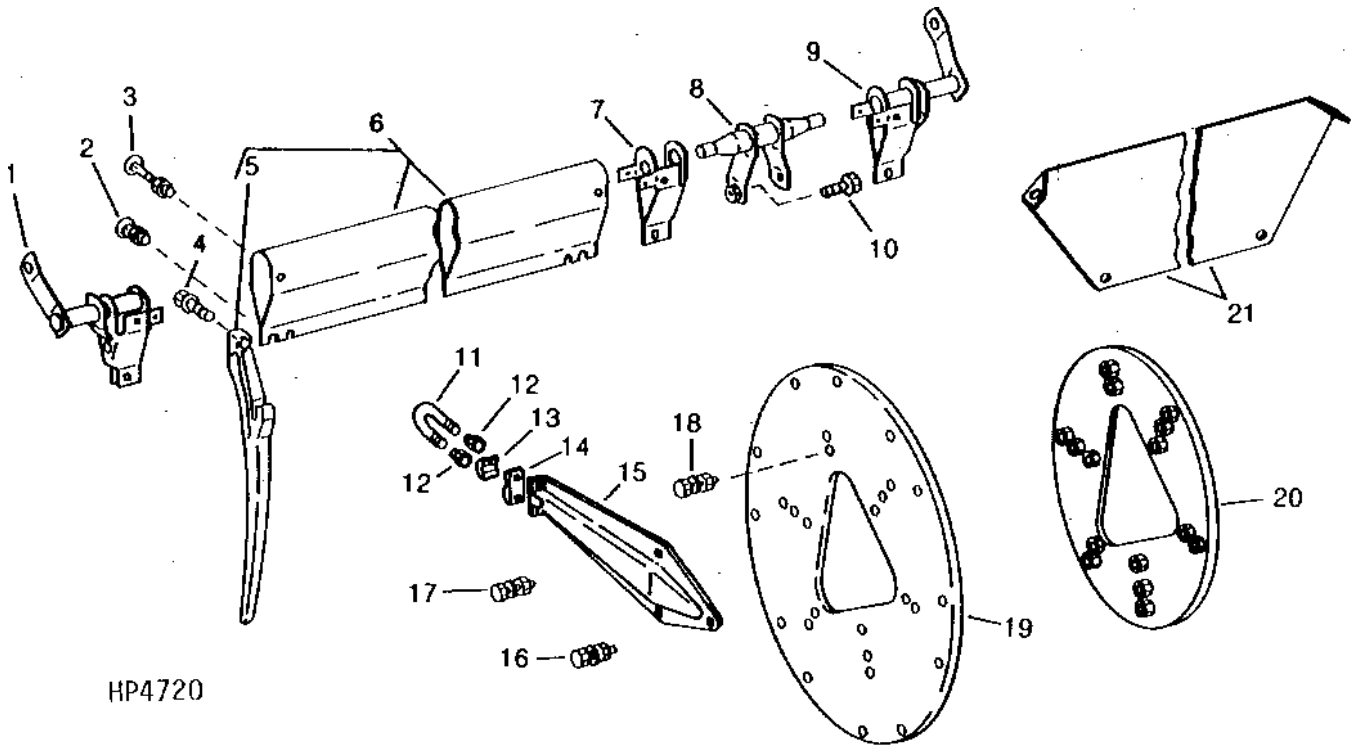
<i>GRID</i>		<i>PAGE</i>	<i>GRID</i>		<i>PAGE</i>
D22	REEL LIFT LINES		E16	SHOE, SKID, SHIELD	
	918 ( -635900) .....	30 - 8		920 (646301-656300) .....	35 - 3
D24	REEL LIFT LINES		E5	SLAVE CYLINDER, REEL LIFT	
	920 (646301-656300) .....	30 - 10		918 ( -635900) .....	30 - 16
E1	REEL LIFT LINES		E5	SLAVE CYLINDER, REEL LIFT	
	920 (656301- ) .....	30 - 12		920 (646301- ) .....	30 - 16
E10	REEL LIFT MASTER CYLINDER .....	30 - 22	B24	SPARE KNIFE, STORAGE BRACKET AND SHIELD	
E5	REEL LIFT SLAVE CYLINDER			918 ( -635900) .....	20 - 14
	918 ( -635900) .....	30 - 16	A13	SPIDER, ECCENTRIC, PICKUP REEL	
E5	REEL LIFT SLAVE CYLINDER			918 (635900- ) .....	10 - 3
	920 (646301- ) .....	30 - 16	A13	SPIDER, ECCENTRIC, PICKUP REEL	
E8	REEL MOTOR (EATON)			920 (646301- ) .....	10 - 3
	(655583- ) .....	30 - 20	C18	SPROCKET, AUGER DRIVE (RH) .....	25 - 12
E6	REEL MOTOR (ROSS NO. K85921)		A16	SPROCKETS, PICKUP REEL	
	( -655582) .....	30 - 18		918 ( -635900) .....	10 - 6
A11	REEL, PICKUP 918 ( -635900) .....	10 - 1	A16	SPROCKETS, PICKUP REEL	
A12	REEL, PICKUP 920 (646301- ) .....	10 - 2		920 (646301- ) .....	10 - 6
C4	ROLLS, DRAPER DRIVE		E19	SPROCKETS, TIGHTENERS, DRIVE CHAINS	
	918 ( -635900) .....	20 - 20		R.H. 918 ( -635900) .....	40 - 1
B20	ROLLS, DRAPER IDLER		E20	SPROCKETS, TIGHTENERS, DRIVE CHAINS	
	918 ( -635900) .....	20 - 10		R.H. 920 (646301- ) .....	40 - 2
			A15	STOP, CYL. ROD EXTENSION	
	S			920 (656301- ) .....	10 - 5
C24	SHAFT AND AUGER - 920		C1	STORAGE BRACKET, KNIFE AND SHIELD	
	(656301- ) .....	25 - 18		920 (646301- ) .....	20 - 16
C22	SHAFT AND CROSS AUGER		B24	STORAGE BRACKET, SHIELD AND SPARE KNIFE	
	920 (646301-656300) .....	25 - 16		918 ( -635900) .....	20 - 14
C18	SHAFT, AUGER DRIVE (RH) .....	25 - 12	A20	STRIPPER FRAME	
B19	SHAFT, CUTTERBAR DRIVE(685101- ) .....	20 - 9		918 ( -635900) .....	15 - 4
C7	SHAFT, MAIN DRIVE .....	25 - 1	B1	STRIPPER, FLOOR	
D1	SHAFTS, AUGER			918 ( -635900) .....	15 - 10
	920 (646301-656300) .....	25 - 20	B2	STRIPPER, FLOOR	
D3	SHAFTS, AUGER			920 (646301-656300) .....	15 - 11
	920 (656301- ) .....	25 - 22	B7	STUBBLE LIGHT HARNESS	
C20	SHAFTS, FINGERS, CROSS AUGER, BEARINGS			920 (646301- ) .....	15 - 16
	918 ( -635900) .....	25 - 14	B6	STUBBLE LIGHTS (OPTIONAL)	
B19	SHEAVE, CUTTERBAR DRIVE.....	20 - 9		918 ( -635900) .....	15 - 15
E21	SHEAVES, TIGHTENERS, DRIVE BELT		B7	STUBBLE LIGHTS (OPTIONAL)	
	L.H. 918 ( -635900) .....	40 - 3		920 (646301- ) .....	15 - 16
E22	SHEAVES, TIGHTENERS, DRIVE BELT		C2	SUPPORTS AND SHIELDS, DRAPER	
	L.H. 920 (646301- ) .....	40 - 4		918 ( -635900) .....	20 - 18
E15	SHIELD		B20	SUPPORTS, DRAPER IDLER ROLLS	
	918 (635101-635900) .....	35 - 2		918 ( -635900) .....	20 - 10
E16	SHIELD				
	920 (646301-656300) .....	35 - 3		T	
E14	SHIELD 918 ( -635100) .....	35 - 1	E12	TIGHTENER, DRAPER DRIVE	
C18	SHIELD, AUGER DRIVE (RH) .....	25 - 12		918 ( -635900) .....	30 - 24
E17	SHIELD, END		E21	TIGHTENERS, DRIVE BELT, SHEAVES	
	920 (656301- ) .....	35 - 4		L.H. 918 ( -635900) .....	40 - 3
A20	SHIELD, FRAME (8820)		E22	TIGHTENERS, DRIVE BELT, SHEAVES	
	918 ( -635900) .....	15 - 4		L.H. 920 (646301- ) .....	40 - 4
C1	SHIELD, KNIFE STORAGE BRACKET		E19	TIGHTENERS, DRIVE CHAINS, SPROCKETS	
	920 (646301- ) .....	20 - 16		R.H. 918( -635900).....	40 - 1
E15	SHIELD, SKID SHOE		E20	TIGHTENERS, DRIVE CHAINS, SPROCKETS	
	918 (635101-635900) .....	35 - 2		R.H. 920 (646301- ) .....	40 - 2
E16	SHIELD, SKID SHOE				
	920 (646301-656300) .....	35 - 3			
B24	SHIELD, SPARE KNIFE AND STORAGE BRACKET				
	918 ( -635900) .....	20 - 14			
C2	SHIELDS AND SUPPORTS, DRAPER				
	918 ( -635900) .....	20 - 18			
E17	SHIELDS, DRIVE				
	920 (656301- ) .....	35 - 4			
E15	SHOE, SKID, SHIELD				
	918 (635101-635900) .....	35 - 2			



# A11

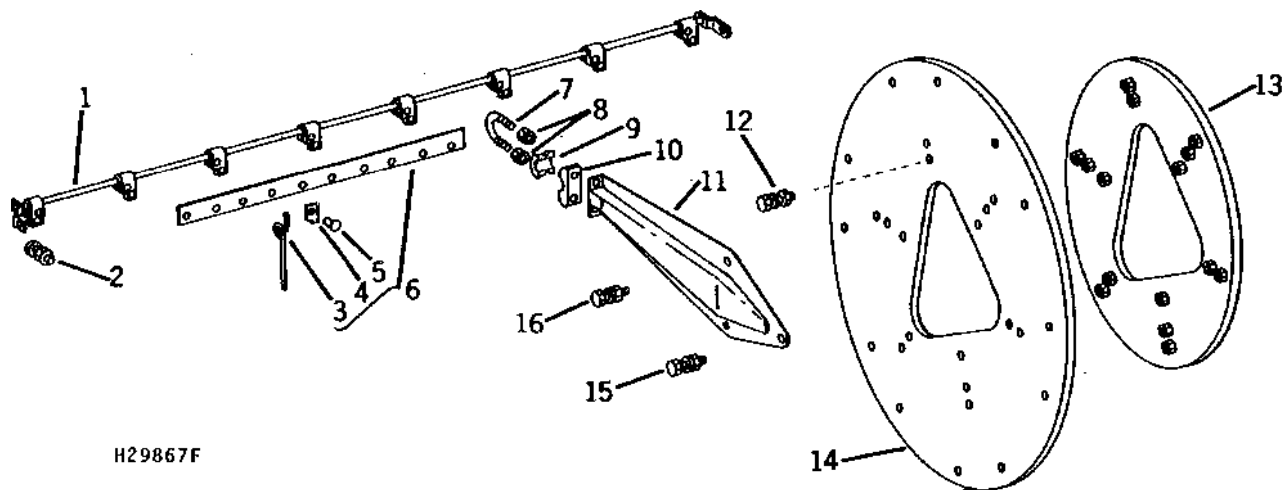
REEL

PICKUP REEL  
 918 ( -635900)  
 HP4720 -UN-01JAN94



KEY	PART NO.	PART NAME	QTY	SERIAL NO.	REMARKS
1	AH122157	BRACKET	6	L.H.	
2	03H1539	BOLT	6	5/16" X 5/8"	
	H127039	NUT	6	7.925 MM (5/16") CADMIUM, (SUB H76696)	
3	H76696	LOCK NUT	6	7.925 MM (5/16")	
	03H1791	BOLT	6	5/16" X 2-1/2"	
	H127039	NUT	6	7.925 MM (5/16") CADMIUM, (SUB H76696)	
4	H76696	LOCK NUT	6	7.925 MM (5/16")	
	H127037	SCREW	AR	NO. 8 (ORIGINAL EQUIPMENT)	
	37H160	SCREW	AR	NO. 10 (SUB FOR H127037 WHEN HOLE IN BAT IS STRIPPED)	
5	AH129419	SCREW AND WASHER KIT	AR	(SUB FOR 37H160 WHEN NO. 10 HOLE IS STRIPPED)	
	H127035	FINGER	234		
6	AH122150	FINGER	6	CENTER	
	AH122151	FINGER	12	R.H.AND L.H.	
7	AH122160	RETAINER	24		
8	AH122159	BRACKET	12	CENTER	
9	AH122158	BRACKET	6	R.H.	
10	H127043	BOLT	AR	7.925 X 15.748 MM (5/16" X 0.620")	
11	E40203	U-BOLT	36		
12	E45229	LOCK NUT	72	6.350 MM (1/4")	
13	E40205	CAP	36		
14	E40206	BASE	36		
15	AH97207	ARM	36		
16	19H1849	CAP SCREW	24	5/16" X 1-1/4"	
	12M7065	LOCK WASHER	24	8.100 MM (0.319")	
	14H785	NUT	24	5/16"	
17	19H2020	CAP SCREW	48	5/16" X 1/2"	
	12M7065	LOCK WASHER	48	8.100 MM (0.319")	
	14H785	NUT	48	5/16"	
18	19H1905	CAP SCREW	24	5/16" X 1"	
	12M7065	LOCK WASHER	24	8.100 MM (0.319")	
	14H785	NUT	24	5/16"	
19	H98690	PLATE	4		
20	AH97208	PLATE	4		
21	H134693	SHIELD	12		

PICKUP REEL  
 920 (646301- )  
 H29867F -UN-01JAN94



KEY	PART NO.	PART NAME	QTY	SERIAL NO.	REMARKS
1	AH97186	SHAFT	6		
2	03H1810	BOLT	144	1/4" X 1-1/2"	
	14H786	NUT	144	1/4"	
3	H33316	FINGER	258		
4	H33317	CLIP	258		
5	H33318	RIVET	258		
6	AH97195	SLAT	6	4.775 X 25.400 MM (3/16" X 1")	CENTER
	AH97196	SLAT	12		R.H. AND L.H.
7	E40203	U-BOLT	24		
8	E45229	LOCK NUT	48	6.350 MM (1/4")	
9	E40205	CAP	24		
10	E40206	BASE	24		
11	AH97207	ARM	24		
12	19H1905	CAP SCREW	24	5/16" X 1"	
	12M7065	LOCK WASHER	24	8.100 MM (0.319")	
	14H785	NUT	24	5/16"	
13	AH97208	PLATE	4		STIFFENING
14	H98690	PLATE	4		SPIDER
15	19H1849	CAP SCREW	24	5/16" X 1-1/4"	
	12M7065	LOCK WASHER	24	8.100 MM (0.319")	
	14H785	NUT	24	5/16"	
16	19H2020	CAP SCREW	48	5/16" X 1/2"	
	12M7065	LOCK WASHER	48	8.100 MM (0.319")	
	14H785	NUT	48	5/16"	

BH77042 (COMPLETE GOODS) BAT AND CENTERTUBE BUNDLE - 20' REEL