

# A2

7722 COMBINE

---

## JOHN DEERE 7722 COMBINE

*(SPECIFICATIONS AND DESIGN SUBJECT TO CHANGE WITHOUT NOTICE)*

### IMPORTANT

THIS PARTS CATALOG CONTAINS ONLY THAT PARTS INFORMATION THAT IS UNIQUE TO THE 7722 COMBINE AND ITS PLATFORMS. VINTAGE IS DETERMINED BY SERIAL NUMBERS. IT IS IMPORTANT THAT THE CORRECT SERIAL NUMBER BE USED WHEN ORDERING PARTS.

### NOTE

FOR COMBINE SEPARATOR INFORMATION, REFER TO PC-1667 FOR THE 7720 COMBINE.

FOR 6466AH-02 ENGINE AND HYDROSTATIC DRIVE INFORMATION, REFER TO PC-1668 FOR THE 8820 COMBINE.

FOR PLATFORM INFORMATION, REFER TO PC-1558 FOR THE 200 SERIES PLATFORMS.

# A3

7722 COMBINE

## PRODUCT IDENTIFICATION NUMBER (PIN) PLATE

USE ALL NUMBERS AND LETTERS SHOWN ON THE PRODUCT IDENTIFICATION NUMBER PLATE IN WARRANTY CORRESPONDENCE.

THE PRODUCT IDENTIFICATION NUMBER PLATE (PIN) IS LOCATED NEAR THE RIGHT-HAND SIDE OF THE TOOL BOX. AN EXAMPLE OF THE TWO-LINES ON THIS PIN PLATE IS:

H07722X615000  
COMBINE

(FIRST LINE)

H0 - MANUFACTURING UNIT (HARVESTER WORKS)  
7722 - MODEL IDENTIFIER  
X - CONFIGURATIN CODE/MODEL IDENTIFIER SUFFIX  
615000 - SEQUENTIAL NUMBER USED IN SERIAL NO. COLUMN

(SECOND LINE)

COMBINE - TYPE OF PRODUCT

## ENGINE SERIAL NUMBER

6466AH02001000RG

6 - DESIGNATES NUMBER OF CYLINDERS  
466 - DESIGNATES CUBIC INCH DISPLACEMENT  
A - DESIGNATES FUEL TYPE OF ENGINE  
H - DESIGNATES FACTORY (HARVESTER WORKS)  
02 - DESIGNATES ENGINE VERSION  
001000 - DESIGNATES ENGINE SERIAL NUMBER  
RG - DESIGNATES MANUFACTURER (JOHN DEERE ENGINE WORKS)

THE ENGINE SERIAL NUMBER PLATE IS LOCATED ON THE FRONT SIDE OF ENGINE BLOCK ABOVE STARTER.

## SERIAL NUMBER LISTING INFORMATION

SERIAL NUMBER INFORMATION IS LISTED TO SHOW ON WHICH MACHINES EACH PART CAN BE USED; FOR EXAMPLE:

- THE PART CAN BE USED ON ALL MACHINES.
- 000000- THE PART CAN BE USED ON ALL MACHINES BEGINNING WITH THE SERIAL NUMBER LISTED.
- 000000 THE PART CAN BE USED ON ALL MACHINES UP TO AND INCLUDING THE SERIAL NUMBER LISTED.
- 000000-000000 THE PART CAN BE USED ON ALL MACHINES BETWEEN AND INCLUDING THE SERIAL NUMBERS LISTED.

WHEN XXXXXX'S ARE LISTED IN PLACE OF A SERIAL NUMBER, A SERIAL NUMBER CHANGE WAS MADE BUT THE EXACT SERIAL NUMBER WAS NOT AVAILABLE WHEN THE CATALOG WAS PRODUCED.

---

## DIRECTION ARROW

ARROWS ARE USED WITH ILLUSTRATIONS TO INDICATE THE FRONT OF THE UNIT. "RIGHT-HAND" AND "LEFT-HAND" SIDES ARE DETERMINED BY FACING IN THE DIRECTION OF MACHINE FORWARD TRAVEL.

## BOX-ENCLOSED ILLUSTRATIONS

A KEY NUMBER, SHOWN IN THE PARTS LIST, IS ASSIGNED TO A BOX ENCLOSING ALL PARTS SOLD AS A SERVICE ASSEMBLY. A BOX NOT KEYED INCLUDES NON-CURRENT PARTS.

## KITS

KIT INFORMATION WILL BE FOUND IMMEDIATELY FOLLOWING THE STORY IN WHICH IT IS USED. THE ILLUSTRATION IS REPEATED WITH ONLY THE KIT PARTS CALLED OUT AND WITH ALL OTHER PARTS SHOWN IN PHANTOM FOR RELATIONSHIP.

## JDM REMANUFACTURED COMPONENTS

THE SERVICE PARTS LISTED IN THIS CATALOG ARE INTENDED FOR THE REPAIR OF ORIGINAL EQUIPMENT COMPONENTS. ALTHOUGH MOST SERVICE PARTS MAY BE USED TO REPAIR REMANUFACTURED COMPONENTS, THE REMANUFACTURED DESIGN MAY CHANGE PARTS SUFFICIENTLY SO THAT SERVICE PARTS ARE INADEQUATE OR NOT USABLE.

## BOLT AND CAP SCREW STRENGTH IDENTIFICATION

BOLTS AND CAP SCREWS REQUIRED TO HAVE HIGH-STRENGTH QUALITIES EQUIVALENT TO SAE GRADE 8 ARE IDENTIFIED THROUGHOUT THIS CATALOG BY THE DESCRIPTION HS SAE 8. ALL STANDARD BOLTS AND CAP SCREWS ARE SAE GRADE 5 OR LOWER.

## SI UNITS OF MEASURE

METRIC DIMENSIONS ARE GIVEN, WHERE APPLICABLE, THROUGHOUT THIS PARTS CATALOG.

## CHANGE INDICATOR LINE

CHANGES AFFECTING THE ORDERING OF PARTS ARE IDENTIFIED BY VERTICAL LINES MARKED IN THE LEFT-HAND MARGIN OF REVISED PARTS LISTING IMAGES. A LINE IS ALSO AT THE LEFT-HAND EDGE OF THE SAME PART NUMBER IN THE NUMERICAL INDEX TO SHOW THE LOCATION OF REVISED INFORMATION.

## ALPHABETICAL INDEX

GRID		PAGE	GRID		PAGE
<b>A</b>					
A24	AIR CLEANER .....	23	C11	CLEVIS, REAR AXLE.....	67
D6	AIR CONDITIONER LINES .....	88	D13	CLUTCH, CROSS AUGER DRIVE (HS) .....	96
A22	AIR INTAKE TUBES.....	21	D5	COMPRESSOR BELT .....	87
A25	AIR INTAKE TUBES.....	25	D5	COMPRESSOR MOUNTING AND SUPPORTS .....	87
B4	ALTERNATOR SHEAVE .....	29	E21	CONCAVE.....	133
B4	ALTERNATOR, BELT.....	29	D6	CONDENSER .....	88
C11	ANCHOR, REAR AXLE .....	67	F1	CONDUIT, GRAIN TANK EXTENSION .....	138
D21	ARM, L.H. FEEDER HOUSE .....	106	C16	CONNECTING LINKS, BALANCE BEAM .....	72
F6	ARM, LIMIT SWITCHES .....	143	G2	CONSOLE COVER DECALS .....	165
D21	ARM, R.H. FEEDER HOUSE.....	106	C14	CONTROL ARM, REAR AXLE .....	70
A23	ASPIRATOR .....	22	E19	CONTROL CABLE AND LINKAGE, REVERSER .....	130
F3	AUGER, SWIVEL SHROUD, HORIZONTAL UNLDG .....	140	B22	CONTROL, CABLE, MOUNTING, HYDRO. DR.....	50
B17	AXLE SHAFT, FINAL DRIVE.....	44	B3	CONTROL, FUEL SHUT-OFF .....	28
<b>B</b>					
C16	BALANCE BEAM .....	72	A17	CORNER FRAME .....	16
F17	BASE, LEVELING SYSTEM FILTER.....	155	B10	COUNTERSHAFT, TRANSMISSION .....	36
C16	BEAM, BALANCE.....	72	A9	COVER, ENGINE POWERSHAFT.....	8
B17	BEARINGS, FINAL DRIVE.....	44	D17	COVER, FEEDER BEATER DRUM.....	101
B19	BEARINGS, FINAL DRIVE.....	46	C1	COVER, HYDRO. DR. AND LEVEL OIL RESERVOIR.....	54
B12	BEARINGS, TRANSMISSION .....	38	E17	COVER, REVERSER GEAR BOX.....	128
B10	BEARINGS, TRANSMISSION COUNTERSHAFT .....	36	B9	COVER, TRANSMISSION AND DIFFERENTIAL HSG.....	35
B1	BELL CRANK .....	26	D13	CROSS AUGER DRIVE (HS) .....	96
C14	BELLCRANK, CONTROL ARM, REAR AXLE.....	70	D15	CUTTERBAR DRIVE (HS) .....	98
E12	BELT IDLERS, FEEDER HOUSE MIDDLE.....	123	D8	CUTTING PLATFORM HYDRAULIC LINES .....	90
B4	BELT, ALTERNATOR.....	29	F16	CYLINDER PIN, LEVELING.....	154
D5	BELT, COMPRESSOR .....	87	F16	CYLINDER SEAL KIT.....	154
G1	BELT, HYDROSTATIC GROUND DRIVE .....	164	C6	CYLINDERS, POWER STEERING .....	60
F24	BELTS, ENGINE.....	162	<b>D</b>		
G1	BELTS, LEVELING SYSTEM DRIVE .....	164	D15	DECAL, DRIVE SHAFT(HS).....	98
E1	BOTTOM SHEETS, FEEDER HOUSE .....	110	D13	DECAL, DRIVESHAFT .....	96
E12	BRACE, FEEDER HOUSE MIDDLE BELT .....	123	D3	DECAL, L.H. LOWER DOOR.....	84
E22	BRACE, GRAIN TANK .....	134	G2	DECALS, CONSOLE COVER .....	165
C1	BRACE, HYDRO. DR. AND LEVEL OIL RESERVOIR.....	54	G2	DECALS, INSTRUMENT PANEL.....	165
E7	BRACKET, FEEDER CONVEYOR.....	116	G3	DECALS, LEFT-HAND .....	166
E22	BRACKET, GRAIN TANK.....	134	G3	DECALS, RIGHT-HAND .....	166
D3	BRACKET, L.H. LOWER DOOR .....	84	C24	DECK, LADDER, FRONT.....	80
F3	BRACKET, UNLOADING AUGER SWIVEL SHROUD .....	140	B16	DIFFERENTIAL.....	42
C4	BRAKE LINES .....	58	B16	DIFFERENTIAL GEARS.....	42
B14	BRAKE, PARKING .....	40	B16	DIFFERENTIAL HOUSING.....	42
C3	BRAKES, WHEEL.....	57	B16	DIFFERENTIAL SHAFTS .....	42
A9	BRUSH, ENGINE POWERSHAFT.....	8	E17	DIPSTICK, REVERSER GEAR BOX .....	128
<b>C</b>					
D1	CAB DOORS .....	82	C3	DISC, WHEEL BRAKES.....	57
B22	CABLE MOUNTING, HYDRO. DRIVE CONTROL .....	50	E24	DOOR, ELEVATOR ACCESS, GRAIN TANK.....	136
B1	CABLE SUPPORTS .....	26	D23	DOOR, FEEDER HOUSE TOP SHEETS .....	108
D3	CABLE, L.H. LOWER DOOR.....	84	E24	DOOR, GRAIN TANK.....	136
E19	CABLE, REVERSER CONTROL .....	130	E22	DOOR, INSPECTION, GRAIN TANK.....	134
F22	CABLES AND MOUNTING, PLATFORM LEVELING (L.H.).....	160	D3	DOOR, LOWER, L.H. ....	84
F20	CABLES AND MTG., PLATFORM LEVELING (R.H.) .....	158	A19	DOOR, MIDDLE, ENGINE COMPARTMENT .....	18
C3	CALIPER PAD, WHEEL BRAKES .....	57	E24	DOOR, RESERVOIR, GRAIN TANK .....	136
C3	CALIPER, WHEEL BRAKES .....	57	D1	DOORS, CAB .....	82
E8	CHAIN GUIDES, FEEDER CONVEYOR DRIVE.....	117	D15	DRIVE SHAFT DECAL (HS) .....	98
D18	CHAIN, FEEDER BEATER DRIVE .....	103	D13	DRIVE SHAFT, DECAL .....	96
E6	CHAIN, FEEDER CONVEYOR .....	115	D11	DRIVE SHAFT, PLATFORM .....	94
E7	CHAIN, FEEDER CONVEYOR .....	116	B5	DRIVE WHEELS.....	31
C16	CLEVIS, CONNECTING LINK, BALANCE BEAM.....	72	D15	DRIVE, CUTTERBAR (HS) .....	98
<b>D</b>					
			D18	DRIVE, FEEDER BEATER.....	103
			E12	DRIVE, FEEDER HOUSE .....	123
			D19	DRIVES, FEEDER BEATER .....	104
			A11	DRIVES, RADIATOR FAN .....	10
			D17	DRUM, FEEDER BEATER.....	101
			E5	DRUM, FEEDER CONVEYOR.....	114
			C23	DUCT, FAN.....	79

# A6

7722 COMBINE

## ALPHABETICAL INDEX - CONTINUED

GRID		PAGE	GRID		PAGE
<b>E</b>					
A19	ENGINE COMPARTMENT FRAME .....	18	B17	FINAL DRIVE PLANETARY PINION .....	44
A19	ENGINE COMPARTMENT MIDDLE DOOR .....	18	B21	FINAL DRIVE SHAFT .....	49
A9	ENGINE POWERSHAFT .....	8	D16	FINGERS, FEEDER BEATER .....	100
F24	ENGINE SHEAVES .....	162	A15	FIREWALL .....	14
F24	ENGINE, BELT .....	162	C15	FRAME .....	71
F24	ENGINE, TIGHTENERS .....	162	A17	FRAME, CORNER .....	16
A23	EXHAUST PIPE .....	22	A19	FRAME, ENGINE COMPARTMENT .....	18
D21	EXTENSION, FEEDER HOUSE .....	106	E3	FRAME, FEEDER HOUSE .....	112
F1	EXTENSION, FRONT, GRAIN TANK .....	138	D10	FRAME, PLATFORM .....	92
F1	EXTENSION, L.H., GRAIN TANK .....	138	C9	FRAME, REAR AXLE .....	64
F1	EXTENSION, R.H., GRAIN TANK .....	138	A17	FRONT PANEL .....	16
F1	EXTENSION, REAR, GRAIN TANK .....	138	B3	FUEL SHUT-OFF CONTROL .....	28
F1	EXTENSIONS, GRAIN TANK .....	138	F8	FUSE, LEVELING CAB .....	146
<b>F</b>					
B6	FAN DRIVE SHIELD .....	32	<b>G</b>		
C23	FAN DUCT .....	79	B9	GASKET, TRANSMISSION AND DIFFERENTIAL HSG .....	35
A15	FAN SHROUD .....	14	B16	GEARS, DIFFERENTIAL .....	42
A11	FAN, RADIATOR .....	10	B19	GEARS, FINAL DRIVE .....	46
D18	FEEDER BEATER DRIVE .....	103	B12	GEARS, TRANSMISSION .....	38
D19	FEEDER BEATER DRIVE SHIELDS .....	104	B10	GEARS, TRANSMISSION COUNTERSHAFT .....	36
D18	FEEDER BEATER DRIVE, HUB .....	103	E22	GRAIN TANK .....	134
D18	FEEDER BEATER DRIVE, SLIP CLUTCH .....	103	F1	GRAIN TANK EXTENSIONS .....	138
D19	FEEDER BEATER DRIVES .....	104	E24	GRAIN TANK, SKIRTS .....	136
D17	FEEDER BEATER DRUM .....	101	A24	GREASE CUP, AIR CLEANER .....	23
D16	FEEDER BEATER FINGERS .....	100	<b>H</b>		
D16	FEEDER BEATER HEADS .....	100	E1	HANDLE, FEEDER HOUSE BOTTOM SHEETS .....	110
D16	FEEDER BEATER SHAFTS .....	100	D1	HANDLES, CAB DOORS .....	82
D16	FEEDER BEATER SHIELDS .....	100	A19	HANDRAIL, DOOR, ENGINE COMPARTMENT .....	18
E7	FEEDER CONVEYOR BRACKET .....	116	C24	HANDRAIL, L.H. DOOR .....	80
E6	FEEDER CONVEYOR CHAIN .....	115	F8	HARNES, LEVELING CAB .....	146
E7	FEEDER CONVEYOR DRIVE CHAIN .....	116	F10	HARNES, WIRING, LEVELING SYSTEM .....	148
E8	FEEDER CONVEYOR DRIVE CHAIN GUIDES .....	117	D16	HEADS, FEEDER BEATER .....	100
E5	FEEDER CONVEYOR FEEDER DRUM .....	114	E24	HINGE, GRAIN TANK .....	136
E7	FEEDER CONVEYOR IDLER .....	116	C9	HITCH, REAR AXLE .....	64
E5	FEEDER CONVEYOR IDLER SHAFT .....	114	D10	HOOD, PLATFORM .....	92
E1	FEEDER HOUSE BOTTOM SHEETS .....	110	F3	HORIZONTAL UNLOADING AUGER SWIVEL SHROUD ..	140
E12	FEEDER HOUSE DRIVE .....	123	A25	HOSE, AIR INTAKE .....	25
D21	FEEDER HOUSE EXTENSION .....	106	A23	HOSE, ASPIRATOR .....	22
E3	FEEDER HOUSE FRAME .....	112	F18	HOSES, LEVELING SYSTEM .....	156
E15	FEEDER HOUSE LOWER MOUNTINGS .....	126	A13	HOSES, RADIATOR .....	12
E15	FEEDER HOUSE LOWER SHAFT .....	126	B16	HOUSING, DIFFERENTIAL .....	42
E15	FEEDER HOUSE LOWER SHEAVE .....	126	A9	HOUSING, ENGINE POWERSHAFT .....	8
E12	FEEDER HOUSE MIDDLE BELT BRACE .....	123	B19	HOUSING, INNER, FINAL DRIVE .....	46
E12	FEEDER HOUSE MIDDLE BELT IDLERS .....	123	B14	HOUSING, PARKING BRAKE .....	40
D21	FEEDER HOUSE ROCKER .....	106	E17	HOUSING, REVERSER GEAR BOX .....	128
E9	FEEDER HOUSE SHIELD,(R.H.) .....	119	C12	HOUSING, SPINDLE, REAR WHEELS .....	68
E10	FEEDER HOUSE SHIELDS (L.H.) .....	120	B8	HOUSING, TRANSM. AND DIFFERENTIAL .....	34
E3	FEEDER HOUSE SIDE SHEETS .....	112	D18	HUB, FEEDER BEATER DRIVE .....	103
D23	FEEDER HOUSE TOP SHEETS .....	108	C12	HUB, REAR WHEELS .....	68
E13	FEEDER HOUSE UPPER SHAFT .....	124	D8	HYDRAULIC LINES	
E13	FEEDER HOUSE UPPER SPROCKETS .....	124		CUTTING PLATFORM .....	90
A24	FILTER, AIR CLEANER .....	23	B22	HYDROSTATIC DRIVE CONTROL CABLE MOUNTING ...	50
C1	FILTER, HYDRO. DR. AND LEVEL OIL		C1	HYDROSTATIC DRIVE OIL RESERVOIR .....	54
	RESERVOIR .....	54	C1	HYDROSTATIC DRIVE OIL RESERVOIR MTG .....	54
F17	FILTERS, LEVELING SYSTEM .....	155	B24	HYDROSTATIC DRIVE UNIT .....	53
B17	FINAL DRIVE AXLE SHAFT .....	44	B24	HYDROSTATIC DRIVE UNIT SHEAVES .....	53
B17	FINAL DRIVE BEARINGS .....	44	B24	HYDROSTATIC DRIVE UNIT SUPPORTS .....	53
B19	FINAL DRIVE BEARINGS .....	46	G1	HYDROSTATIC GROUND DRIVE BELTS .....	164
B19	FINAL DRIVE GEARS .....	46	G1	HYDROSTATIC GROUND DRIVE SHEAVES .....	164
B19	FINAL DRIVE INNER HOUSING .....	46	B6	HYDROSTATIC GROUND DRIVE SHIELD .....	32
B17	FINAL DRIVE OUTER HOUSING .....	44			
B19	FINAL DRIVE PINION SHAFT .....	46			

# A7

7722 COMBINE

## ALPHABETICAL INDEX - CONTINUED

GRID		PAGE	GRID		PAGE
<b>I</b>					
E7	IDLER, FEEDER CONVEYOR DRIVE CHAIN .....	116	F22	MOUNTING, CABLES, PLATFORM LEVELING (L.H.).....	160
A11	IDLER, RADIATOR.....	10	F20	MOUNTING, CABLES, PLATFORM LEVELING (R.H.) .....	158
E12	IDLERS, FEEDER HOUSE MIDDLE BELT.....	123	D5	MOUNTING, COMPRESSOR.....	87
B10	INPUT SHAFT, TRANSMISSION.....	36	B22	MOUNTING, HYDROSTATIC DRIVE CONTROL CABLE .....	50
G2	INSTRUMENT PANEL DECALS .....	165	E15	MOUNTINGS, FEEDER HOUSE, LOWER .....	126
F1	ISOLATOR, WINDOW, GRAIN TANK EXTENSION.....	138	C1	MTG, HYDRO. DR. AND LEVELING OIL RESERVOIR.....	54
<b>K</b>					
F14	KIT, LEVELING SYSTEM.....	152	A23	MUFFLER .....	22
F16	KIT, SEAL, CYLINDER.....	154	<b>O</b>		
C7	KIT, STEERING CYLINDER.....	61	C1	OIL RESERVOIR, HYDRO. DR. AND LEVELING .....	54
E22	KNOB, GRAIN TANK .....	134	B17	OUTER HOUSING, FINAL DRIVE.....	44
<b>L</b>					
C24	LADDER, FRONT.....	80	<b>P</b>		
E22	LATCH, GRAIN TANK .....	134	A17	PANEL, FRONT .....	16
G3	LEFT-HAND DECALS .....	166	E24	PANEL, GRAIN TANK .....	136
C1	LENS, HYDRO. DR. AND LEVEL OIL RESERVOIR.....	54	B14	PARKING BRAKE.....	40
F8	LEVELING CAB FUSE.....	146	B14	PARKING BRAKE HOUSING .....	40
F8	LEVELING CAB HARNESS .....	146	F16	PIN, LEVELING CYLINDER.....	154
F8	LEVELING CAB LIGHTS .....	146	B12	PINION SHAFT, TRANSMISSION .....	38
F8	LEVELING CAB SWITCH.....	146	D19	PIVOT SHAFT, FEEDER BEATER DRIVE .....	104
F22	LEVELING CABLES AND MOUNTING, PLATFORM (L.H.).....	160	D19	PIVOT, FEEDER BEATER DRIVE .....	104
F20	LEVELING CABLES AND MTG., PLATFORM (R.H.) .....	158	B17	PLANETARY PINION, FINAL DRIVE .....	44
F5	LEVELING CONTROL SWITCH BOX .....	142	F3	PLATE, UNLOADING AUGER SWIVEL SHROUD .....	140
F16	LEVELING CYLINDER .....	154	C3	PLATE, WHEEL BRAKES .....	57
C1	LEVELING OIL RESERVOIR .....	54	D11	PLATFORM DRIVE SHAFT .....	94
C1	LEVELING OIL RESERVOIR MTG .....	54	D10	PLATFORM FRAME.....	92
F7	LEVELING SOLENOID VALVE .....	145	D10	PLATFORM HOOD.....	92
F12	LEVELING SYSTEM.....	150	F22	PLATFORM LEVELING CABLES AND MOUNTING (L.H.).....	160
G1	LEVELING SYSTEM DRIVE BELTS .....	164	F20	PLATFORM LEVELING CABLES AND MOUNTING (R.H.) .....	158
G1	LEVELING SYSTEM DRIVE SHEAVES .....	164	C6	POWER STEERING CYLINDERS .....	60
F17	LEVELING SYSTEM FILTER SWITCH .....	155	A9	POWERSHAFT, ENGINE.....	8
F17	LEVELING SYSTEM FILTERS .....	155	A22	PRECLEANER .....	21
F18	LEVELING SYSTEM HOSES.....	156	A25	PRESSURE SWITCH, AIR INTAKE .....	25
F18	LEVELING SYSTEM LINES.....	156	F12	PUMP, LEVELING SYSTEM .....	150
F12	LEVELING SYSTEM PUMP.....	150	<b>R</b>		
F11	LEVELING SYSTEM TESTER.....	149	C23	R.H. SEPARATOR SHIELD .....	79
F10	LEVELING SYSTEM WIRING HARNESS.....	148	A13	RADIATOR .....	12
F14	LEVELING SYSTEM, KIT.....	152	A11	RADIATOR FAN .....	10
D23	LEVER, DOOR, FEEDER HOUSE TOP SHEETS .....	108	A11	RADIATOR FAN DRIVES.....	10
F8	LIGHTS, LEVELING CAB.....	146	A13	RADIATOR HOSES .....	12
F6	LIMIT SWITCH ARM .....	143	C24	RAILINGS .....	80
F6	LIMIT SWITCHES.....	143	C11	REAR AXLE .....	67
D6	LINES, AIR CONDITIONER.....	88	C14	REAR AXLE CONTROL ARM .....	70
C4	LINES, BRAKE .....	58	C9	REAR AXLE FRAME .....	64
F18	LINES, LEVELING SYSTEM .....	156	C9	REAR AXLE SUPPORT .....	64
E19	LINKAGE, REVERSER CONTROL CABLE .....	130	C12	REAR WHEELS AND SPINDLES .....	68
B1	LINKAGE, THROTTLE .....	26	D6	RECEIVER .....	88
C16	LINKS, CONNECTING, BALANCE BEAM.....	72	E22	REINFORCEMENT, GRAIN TANK .....	134
D3	LOWER DOOR, L.H. ....	84	E19	REVERSER CONTROL CABLES AND LINKAGE .....	130
<b>M</b>					
A21	MANIFOLD SHIELD .....	20	E17	REVERSER GEAR BOX .....	128
F5	MERCURY SWITCH.....	142	G3	RIGHT-HAND DECALS .....	166
<b>N</b>					
<b>O</b>					
<b>P</b>					
<b>R</b>					

# A8

7722 COMBINE

## ALPHABETICAL INDEX - CONTINUED

GRID		PAGE	GRID		PAGE
<b>S</b>					
D11	SAFETY CHAIN, PLATFORM DRIVE SHAFT .....	94	C1	SUPPORT, HYDRO. DR. AND LEVEL OIL RESERVOIR.....	54
D1	SEALS, CAB DOORS .....	82	C9	SUPPORT, REAR AXLE .....	64
C22	SEPARATOR RIGHT-HAND SHIELD .....	78	F3	SUPPORT, UNLOADING AUGER SWIVEL SHROUD .....	140
C21	SEPARATOR SIDE SHEET, L.H. ....	77	B1	SUPPORTS, CABLE.....	26
C20	SEPARATOR SIDE SHEET, R.H. ....	76	D5	SUPPORTS, COMPRESSOR .....	87
D13	SHAFT, CROSS AUGER DRIVE (HS) .....	96	B24	SUPPORTS, HYDROSTATIC DRIVE UNIT .....	53
E5	SHAFT, FEEDER CONVEYOR IDLER .....	114	C18	SWING ARMS .....	74
E15	SHAFT, FEEDER HOUSE LOWER .....	126	F5	SWITCH BOX, LEVELING CONTROL .....	142
B19	SHAFT, FINAL DRIVE .....	46	F8	SWITCH, LEVELING CAB .....	146
B21	SHAFT, FINAL DRIVE .....	49	F17	SWITCH, LEVELING SYSTEM FILTERS .....	155
E13	SHAFT, UPPER, FEEDER HOUSE.....	124	F6	SWITCHES, LIMIT .....	143
B16	SHAFTS, DIFFERENTIAL .....	42	F3	SWIVEL SHROUD, HORIZONTAL UNLDG. AUGER .....	140
D16	SHAFTS, FEEDER BEATER .....	100	<b>T</b>		
B4	SHEAVE, ALTERNATOR .....	29	E22	TANK, GRAIN .....	134
D15	SHEAVE, CUTTERBAR DRIVE (HS) .....	98	F11	TESTER, LEVELING SYSTEM .....	149
A9	SHEAVE, ENGINE POWERSHAFT.....	8	B1	THROTTLE LINKAGE .....	26
E15	SHEAVE, FEEDER HOUSE LOWER .....	126	C8	TIE RODS, STEERING .....	63
B24	SHEAVE, HYDROSTATIC DRIVE UNIT .....	53	F24	TIGHTENERS, ENGINE .....	162
F24	SHEAVES, ENGINE .....	162	B8	TRANSM. AND DIFFERENTIAL SHIFTER FORKS .....	34
G1	SHEAVES, HYDROSTATIC GROUND DRIVE .....	164	B9	TRANSMISSION AND DIFFERENTIAL HSG SHIFTER CAM .....	35
G1	SHEAVES, LEVELING SYSTEM DRIVE.....	164	B9	TRANSMISSION AND DIFFERENTIAL HSG GASKET .....	35
F3	SHEET, FRONT, UNLDG AUGER SWIVEL SHROUD.....	140	B8	TRANSMISSION AND DIFFERENTIAL HSG.....	34
E24	SHEET, GRAIN TANK .....	136	B9	TRANSMISSION AND DIFFERENTIAL HSG. COVER.....	35
F3	SHEET, SIDE, UNLDG AUGER SWIVEL SHROUD.....	140	B12	TRANSMISSION BEARINGS.....	38
E1	SHEETS, BOTTOM, FEEDER HOUSE .....	110	B12	TRANSMISSION GEARS .....	38
D23	SHEETS, TOP, FEEDER HOUSE .....	108	B12	TRANSMISSION PINION SHAFT .....	38
A21	SHIELD MANIFOLD .....	20	B10	TRANSMISSION, COUNTERSHAFT .....	36
D13	SHIELD, CROSS AUGER DRIVE (HS).....	96	B10	TRANSMISSION, GEARS AND BEARINGS .....	36
D15	SHIELD, CUTTERBAR DRIVE (HS) .....	98	B10	TRANSMISSION, INPUT SHAFT.....	36
B6	SHIELD, FAN DRIVE .....	32	C11	TUBE, REAR AXLE .....	67
B6	SHIELD, HYDROSTATIC GROUND DRIVE .....	32	A22	TUBES, AIR INTAKE .....	21
D11	SHIELD, PLATFORM DRIVE SHAFT .....	94	A25	TUBES, AIR INTAKE .....	25
C23	SHIELD, SEPARATOR, R.H. ....	79	<b>U</b>		
C22	SHIELD, SEPARATOR, RIGHT-HAND .....	78	F3	UNLDG. AUGER, SWIVEL SHROUD, HORIZONTAL .....	140
E9	SHIELD,FEEDER HOUSE,(R.H.).....	119	<b>V</b>		
D16	SHIELDS, FEEDER BEATER .....	100	F7	VALVE, SOLENOID, LEVELING .....	145
D19	SHIELDS, FEEDER BEATER DRIVE .....	104	<b>W</b>		
E10	SHIELDS, FEEDER HOUSE (L.H.) .....	120	C3	WHEEL BRAKES .....	57
B9	SHIFTER CAM, TRANSMISSION AND DIFFERENTIAL HOUSING .....	35	B5	WHEELS, DRIVE .....	31
B8	SHIFTER FORKS,TRANSM. AND DIFFERENTIAL .....	34	F1	WINDOW, GRAIN TANK EXTENSION .....	138
A15	SHROUD, FAN .....	14	F10	WIRING HARNESS, LEVELING SYSTEM .....	148
F3	SHROUD, SWIVEL, HORIZONTAL UNLDG AUGER .....	140	<b>Y</b>		
B3	SHUT-OFF CONTROL, FUEL .....	28	B21	YOKE, FINAL DRIVE SHAFT .....	49
C21	SIDE SHEET, SEPARATOR, L.H. ....	77	D11	YOKE, PLATFORM DRIVE SHAFT.....	94
C20	SIDE SHEET, SEPARATOR, R.H. ....	76			
E3	SIDE SHEETS, FEEDER HOUSE .....	112			
E24	SKIRTS, GRAIN TANK.....	136			
D18	SLIP CLUTCH, FEEDER BEATER .....	103			
D18	SLIP CLUTCH, FEEDER BEATER DRIVE .....	103			
F7	SOLENOID VALVE, LEVELING.....	145			
C12	SPINDLE, L.H., REAR WHEELS .....	68			
C12	SPINDLE, R.H., REAR WHEELS .....	68			
C12	SPINDLES AND REAR WHEELS .....	68			
E22	SPRING, LATCH, GRAIN TANK .....	134			
D13	SPROCKET, CROSS AUGER DRIVE (HS) .....	96			
D19	SPROCKET, FEEDER BEATER .....	104			
E7	SPROCKET, FEEDER CONVEYOR DRIVE CHAIN.....	116			
E13	SPROCKET, UPPER, FEEDER HOUSE.....	124			
C7	STEERING CYLINDER KIT .....	61			
C8	STEERING TIE RODS .....	63			
C1	STRAINER, HYDRO. DR. AND LEVEL OIL RESERVOIR.....	54			
E22	STRAP, GRAIN TANK .....	134			

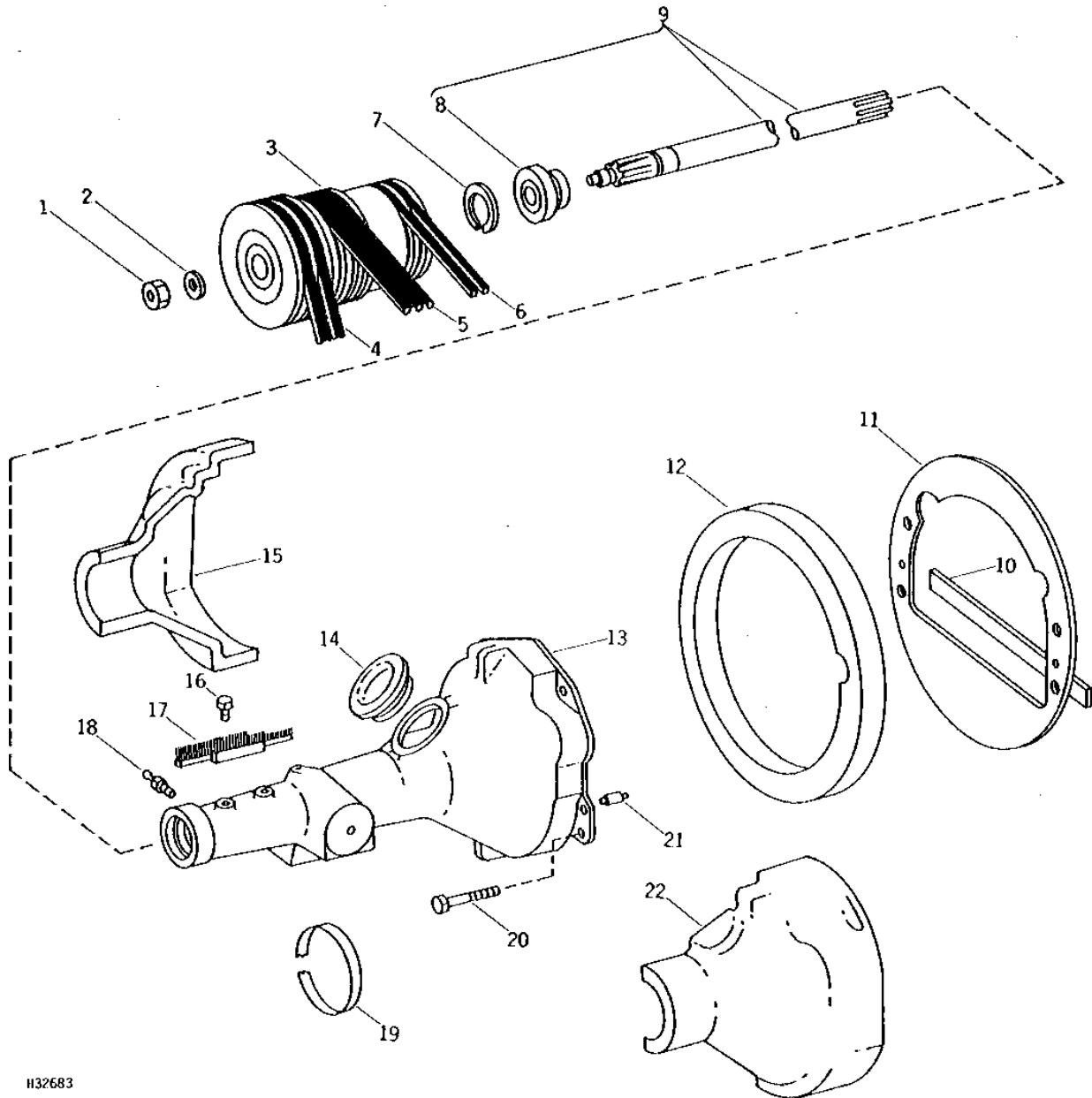
# A9

7722 COMBINE

H32683

-UN-01JAN94

## ENGINE POWERSHAFT



H32683



# A10

7722 COMBINE

## ENGINE POWERSHAFT - CONTINUED

KEY	PART NO.	PART NAME	QTY	SERIAL NO.	REMARKS
1	H93931	LOCK NUT	1		
2	24H1509	WASHER	1		1-25/64" X 2-1/2" X 0.194"
3	H94981	SHEAVE	1		223 MM (8-25/32"), 250 MM (9-27/32"), AND 340 MM (13-13/32") DIAS. (MATCHED SET OF 2)
4	AH84633	BELT SET	1		
5	H108175	BELT	1		
6	AH96300	BELT SET	1		(MATCHED SET OF 2)
7	BP13615	SNAP RING	1	-620249	
	F2622R	SNAP RING	1	620250-	
8	JD8682	BALL BEARING	1	-620249	
	JD8683	BALL BEARING	1	620250-	
9	AH94719	SHAFT	1	-620249	
	AH125745	SHAFT	1	620250-	
10	.....	SEAL	1		32 MM X 508 MM X 3 MM (7-1/4" X 20" X 1/8") (CUT FROM H88771)
11	H86930	PLATE	1		
12	H92622	ISOLATOR	1		
13	H95878	HOUSING	1	-620249	
	H130475	HOUSING	1	620250-	
14	H76728	COVER	1		
15	AH94737	COVER	1		FRONT (FOAM INSULATION)
16	N10212	SELF-LOCKING SCREW	2		
17	AH96578	SEAL	1	-620249	
	AH96231	BRUSH	1	620250-	
18	JD7797	LUBRICATION FITTING	1		STRAIGHT, 1/4"
19	TY5030	TAPE	AR		VINYL, 2" WIDTH
20	19H1782	CAP SCREW	4		3/4" X 2-1/4"
	12H236	LOCK WASHER	4		3/4"
21	H79910	DOWEL PIN	2		
22	AH94738	COVER	1		REAR (FOAM INSULATION)

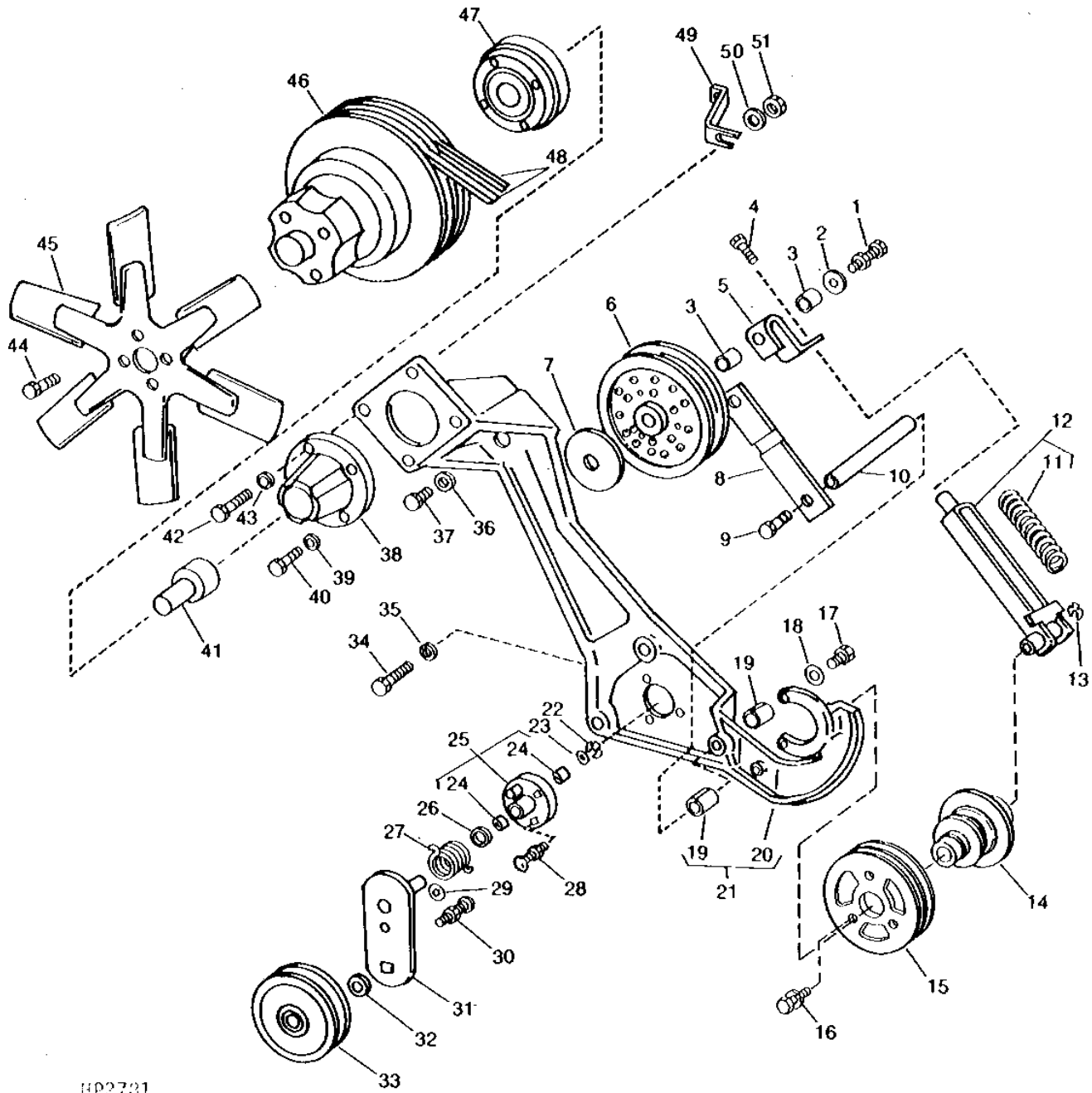
# A11

7722 COMBINE

HP2781

-UN-01JAN94

## RADIATOR FAN DRIVES AND IDLER



HP2781