

750J/850J CRAWLER DOZER



JOHN DEERE

PARTS CATALOG

750J/850J CRAWLER DOZER

PC9465 (Jan-07) English

Worldwide Construction and Forestry Division

Worldwide Edition
Litho in U.S.A. (Revised)
COPYRIGHT © 2007
DEERE & COMPANY
Moline, Illinois
All rights reserved

INTRODUCTION AND CUSTOMER INFORMATION

T206914A

-UN-11JAN05



*RIGHT SIDE VIEW OF 850J CRAWLER
(MANUFACTURED 2005-)*

TO THE CUSTOMER

THE PART NUMBERS IN THIS PARTS CATALOG WERE CORRECT AT THE TIME THIS CATALOG WAS PUBLISHED. IT IS OUR POLICY TO CONSTANTLY IMPROVE OUR MACHINES AND, THEREFORE, PART NUMBERS MAY CHANGE. WHEN ORDERING PARTS, VERIFY PART NUMBERS THROUGH YOUR DEALER.

(SPECIFICATIONS AND DESIGN SUBJECT TO CHANGE WITHOUT NOTICE.)

SERIAL NUMBER LOCATION

EACH 750J,850J CRAWLER MAY HAVE SEVEN SERIAL NUMBERS. ONE FOR THE PRODUCT IDENTIFICATION NUMBER, ONE FOR THE ENGINE, ONE FOR THE L.H. TRACK DRIVE MOTOR, ONE FOR THE R.H. TRACK DRIVE MOTOR, ONE FOR THE HYDROSTATIC FRONT PUMP, ONE FOR THE HYDROSTATIC REAR PUMP AND ONE FOR THE TRANSMISSION CONTROL UNIT.

THE PRODUCT IDENTIFICATION NUMBER IS LOCATED ON THE RIGHT-HAND SIDE OF THE CRAWLER FRAME BELOW THE OPERATORS STATION

THE ENGINE SERIAL NUMBER PLATE IS LOCATED ON THE RIGHT-HAND SIDE OF THE CYLINDER BLOCK.

THE TRACK DRIVE MOTOR SERIAL NUMBER PLATE IS LOCATED ON THE END CAP OF THE DRIVE MOTOR.

THE FRONT HYDROSTATIC PUMP SERIAL NUMBER PLATE IS LOCATED ON THE PUMP HOUSING.

THE REAR HYDROSTATIC PUMP SERIAL NUMBER PLATE IS LOCATED ON THE PUMP HOUSING.

THE TRANSMISSION CONTROL UNIT SERIAL NUMBER IS LOCATED ON THE REAR OF THE CONTROLLER. LEFT SIDE AND RIGHT SIDE, FRONT AND REAR OF THE CRAWLER ARE VIEWED BY FACING IN THE DIRECTION OF THE CRAWLER FORWARD TRAVEL.

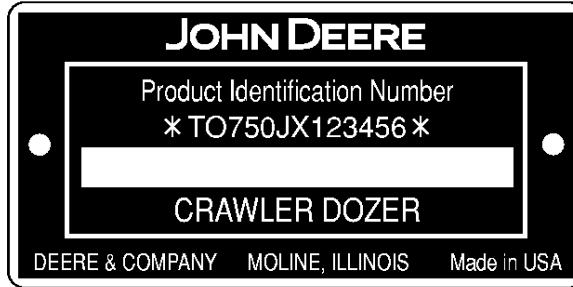
000I-3

750J/850J CRAWLER DOZER

PRODUCT IDENTIFICATION NUMBER (750J,850J)

T207251

-UN-19JAN05



T207251

1. DESIGNATES CRAWLER MANUFACTURER
2. DESIGNATES CRAWLER MODEL
3. DESIGNATES CRAWLER SERIAL NUMBER
4. DESIGNATES UNIT TYPE

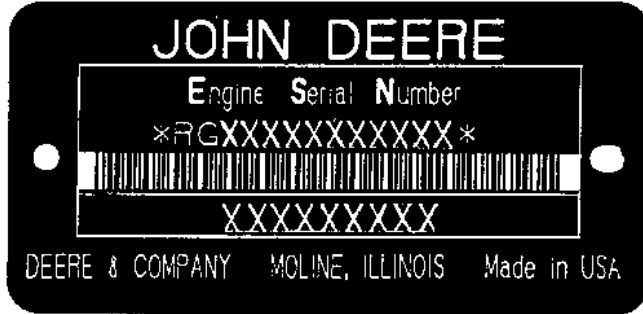
TO - JOHN DEERE DUBUQUE WORKS
750JX
123456 (EXAMPLE)
CRAWLER

000I-4

750J/850J CRAWLER DOZER

ENGINE SERIAL NUMBER PLATE (750J)

RGP3513 -UN-01JAN94



RGP3513

FIRST LINE

PE - JOHN DEERE TORREON ENGINE WORKS

6

068 (6.8 LITERS)

H (AIR-TO-AIR)

T - JOHN DEERE DUBUQUE WORKS

XXXXXX

SECOND LINE

6068HT058

DEFINES

DESIGNATES ENGINE MANUFACTURER

DESIGNATES NUMBER OF CYLINDERS

DESIGNATES LITER DISPLACEMENT

DESIGNATES TYPE OF AIR INTAKE SYSTEM

DESIGNATES USER FACTORY

DESIGNATES ENGINE SERIAL NUMBER

APPLICATION

750J CRAWLER DOZER

000I-5

750J/850J CRAWLER DOZER

ENGINE SERIAL NUMBER PLATE (850J)

RGP3513 -UN-01JAN94



RGP3513

FIRST LINE

RG - JOHN DEERE WATERLOO ENGINE WORKS

6

081 (8.1 LITERS)

H (AIR-TO-AIR)

T - JOHN DEERE DUBUQUE WORKS

XXXXXX

SECOND LINE

6081HT006

DEFINES

DESIGNATES ENGINE MANUFACTURER

DESIGNATES NUMBER OF CYLINDERS

DESIGNATES LITER DISPLACEMENT

DESIGNATES TYPE OF AIR INTAKE SYSTEM

DESIGNATES USER FACTORY

DESIGNATES ENGINE SERIAL NUMBER

APPLICATION

850J CRAWLER DOZER

SERIAL NUMBER LISTING INFORMATION

SERIAL NUMBER INFORMATION IS LISTED TO SHOW ON WHICH MACHINES EACH PART CAN BE USED; FOR EXAMPLE:

- THE PART CAN BE USED ON ALL MACHINES.
- 000000- THE PART CAN BE USED ON ALL MACHINES BEGINNING WITH THE SERIAL NUMBER LISTED.
- 000000 THE PART CAN BE USED ON ALL MACHINES UP TO AND INCLUDING THE SERIAL NUMBER LISTED.
- 000000-000000 THE PART CAN BE USED ON ALL MACHINES BETWEEN AND INCLUDING THE SERIAL NUMBERS LISTED.

WHEN XXXXXX'S ARE LISTED IN PLACE OF A SERIAL NUMBER, A SERIAL NUMBER CHANGE WAS MADE BUT THE EXACT SERIAL NUMBER WAS NOT AVAILABLE WHEN THE CATALOG WAS PRODUCED.

DIRECTION ARROW

ARROWS ARE USED WITH ILLUSTRATIONS TO INDICATE THE FRONT OF THE UNIT. "RIGHT-HAND" AND "LEFT-HAND" SIDES ARE DETERMINED BY FACING IN THE DIRECTION OF MACHINE FORWARD TRAVEL.

BOX-ENCLOSED ILLUSTRATIONS

A KEY NUMBER, SHOWN IN THE PARTS LIST, IS ASSIGNED TO A BOX ENCLOSING ALL PARTS SOLD AS A SERVICE ASSEMBLY.

COMPLETE GOODS LISTINGS

COMPLETE GOODS ARE LISTED IN BOLD FACE TYPE. ORDER SEPARATELY. DO NOT INCLUDE ON REPLACEMENT PARTS ORDER.

SI UNITS OF MEASURE

METRIC DIMENSIONS ARE GIVEN, WHERE APPLICABLE, THROUGHOUT THIS PARTS CATALOG.

CHANGE INDICATOR LINE

CHANGES AFFECTING THE ORDERING OF PARTS ARE IDENTIFIED BY VERTICAL LINES MARKED IN THE LEFT-HAND MARGIN OF REVISED PARTS LISTING IMAGES. A LINE IS ALSO AT THE LEFT-HAND EDGE OF THE SAME PART NUMBER IN THE NUMERICAL INDEX TO SHOW THE LOCATION OF REVISED INFORMATION.

REMARKS AND ABBREVIATIONS

THE FOLLOWING REMARKS AND ABBREVIATIONS MAY APPEAR THROUGHOUT THE PARTS CATALOG. REFER TO THE FOLLOWING CHART FOR TRANSLATIONS TO LANGUAGES OTHER THAN ENGLISH.

REMARKS AND ABBREVIATIONS

TX1007193

-UN-04MAY06

PHRASE	ENGLISH	FRANCAIS	DEUTSCH	ITALIANO	ESPAÑOL	SVENSKA
ALSO ORDER, ORD W/	Also order	Commander aussi	Ebenso bestellen	Ordinare anche	Pedir también	Beställ även
AMP	Ampere	Ampère	Ampere	Ampere	Amperio	Ampere
APPL, APPL ONLY	This application only	Uniquement pour cette utilisation	Nur für diese Anwendung	Solo per questa applicazione	Solo para este propósito	Endast för denna användning
AR	As required	Selon le besoin	Nach Bedarf	Secondo necessità	Según necesidad	Vid behov
ASSY	Complete assembly	Ensemble complet	Kompl.-Zusammenbau	Gruppo completo	Montaje completo	Komplett montering
CA, CONVENIENCE ASSY	Convenience assembly	Ensemble convenance	Komfort-Zusammenbau	Montaggio pratico	Montaje de conveniencia	Lämplig montering
CCW	Counter-clockwise	Sens anti-horaire	Gegen Uhrzeigersinn	Senso antiorario	A la izquierda	Moturs
COMPLETE	Complete	Complet	Vollständig	Completo	Completo	Fullständig
COMPLETE GOODS	Complete goods	Compléter marchandises	Vollst. Waren	Merci complete	Mercancías completas	Kompleta varor
CTL CUT TO LENGTH	Cut to length	Couper à la longueur	Auf Länge zurechtschneiden	Tagliare alla lunghezza	Corte a la longitud	Skära till längd
CW	Clockwise	Sens horaire	Im Uhrzeigersinn	In senso orario	A la derecha	Medurs
FOR	For	Pour	Für	Per	Para	För
FRONT	Front	Avant	Vorn	Anteriore	Frente	Fram
GAS	Gasoline	Essence	Benzin	Benzina	Gasolina	Bensin
HP	Horsepower	Puissance en cv	Leistung	Potenza	Potencia	Hästkraft
HFWD	Hydraulic Front-wheel Drive	Traction Avant Hydraulique	Hydraulischer Vorderradantrieb	Trazione Anteriore Idraulica	Traccion Delantera Hidraulica	Hydraulisk Framhjulsdrift
HS, HEAD MARKED	High strength, head marked	Haute résistance, tête marquée	Hochfest, vorn gekennzeichnet	Contrassegnato in testa, ad alta resistenza	Alta fuerza, marca en cabeza	Hög styrka, huvudmärkt
ID	Inside diameter	Diamètre intérieur	Innendurchmesser	Diametro interno	Diá. interior	Innerdiameter
INCH	Inch	Pouce	In.	Pollice	Pulg.	Tum
INCL KEYS	Includes keys...	Comprend les positions...	Einschließlich Schlüssel...	Include le chiavette...	Incluye posiciones...	Inklusive nycklar...
INCL, INCLUDES	Includes...	Comprend...	Enthält...	Include...	Incluye...	Inkluderar...
INCLUDES PARTS/ ITEMS MARKED	Includes parts/items marked...	Comprend les pièces/articles marqués...	Enthält gekennzeichnete Teile/Pos. ...	Include i pezzi e gli elementi contrassegnati...	Incluye piezas marcadas...	Inkluderar markerade delar/artiklar...
INNER	Inner	Intérieur	Innerer	Interno	Interno	Inre, invändig
KIT	Kit	Kit	Kit	Kit	Juego	Sats
L	Number of links	Nombre de maillons	Anzahl der Glieder	Numero di maglie	Nº de eslabones	Antal länkar
LGTH	Length	Longueur	Länge	Lunghezza	Longitud	Längd
LGP	Low Ground Pressure	Faible Pression Au Sol	Niederer Bodendruck	Bassa Pressione Sul Suolo	Baja Presion Sobre El Suelo	Laagt Marktryck
LH	Left-hand	Gauche	Links	Sinistra	Izquierda	Vänster
LT	Long Track	Chenille Longue	Mit Langem Laufwerk	Cingolo Lungo	Cadena Largo	Laangt Larvband
LOW, LOWER	Lower	Inférieur	Unterer	Inferiore	Inferior	Nedre
MAKE FROM, MF MARKED	Make from Marked	Faireavec Marqué	Herstellen von Markiert	Fabbricare da Contrassegnato	Hacer de Marcado	Tillverka av Märkt

TX1007193

REMARKS AND ABBREVIATIONS

TX1007195

-UN-04MAY06

PHRASE	ENGLISH	FRANCAIS	DEUTSCH	ITALIANO	ESPAÑOL	SVENSKA
MATCHED SET	Matched set	Ensemble assorti	Passender Satz	Set abbinato	Sistema emparejado	Anpassad sats
MFWD	Mechanical Front-Wheel Drive	Pont Avant	Allradantrieb	Ruota Motrice Meccanica Anteriore	Traccion Delantera Mecanica	Mekanisk Framhjulsdrift
NA, NOT USED THIS APPL	Not used this application	Ne sert pas pour cette application	In dieser Anwendung nicht benutzt	Non usato in questa applicazione	No se usa en esta aplicación	Ej använd i detta sammanhang
NLA	No longer available	Épuisé	Nicht mehr lieferbar	Non più disponibile	Descontinuado	Ej längre tillgänglig
NSEP	Not supplied separately	Non livré séparément	Nicht einzeln lieferbar	Non fornito separatamente	No se suministra por separado	Kan ej erhållas separat
OD	Outside diameter	Diamètre extérieur	Außendurchmesser	Diametro esterno	Diá. exterior	Ytterdiameter
OPTIONAL	Optional	En option	Wahlweise	Opzionale	Opcional	Valfri
OR	Or	Ou	Oder	Oppure	O	Eller
ORD, ORDER	Order	Commander	Bestellen	Ordinare	Pídase	Order
OS	Oversize	Sur-dimension	Übergröße	Maggiorato	Sobretamaño	Överdimension
OUTER	Outer	Externe	Äußerer	Esterno	Externo	Yttre, utvändig
PKG, PACKG	Package, Packet of	Emballage, paquet de	Verpackung, verpackt mit	In confezione da	Paquete de	I sats; paket
PTO	Power Take Off	Prise De Force	Zapfwelle	Presa Di Forza	Toma De Fuerza	Kraftuttag
RATIO	Ratio	Rapport	Übersetzungs-verhältnis	Rapporto	Índice	Förhållande
REAR	Rear	Arrière	Hinten	Posteriore	Trasero	Bak; bakre
REMAN	Remanufactured	Echange Standard	Generalveberholt	Refatto	Refabricador por	Renoverad
REPL	Replaces	Remplace	Ersetzt	Sostituisce	Sustituye	Ersätter
RH	Right-hand	Droit	Rechts	Destra	Derecha	Höger
SN	Serial number	Numéro de série	Seriennummer	Numero di serie	Nº de serie	Seriennummer
STD	Standard	Standard	Standard	Standard	Normal	Standard
SUB	Replaced by	Remplacé par	Ersetzt durch	Sostituito da	Sustituido por	Ersatt med
SUB COMPONENTS	Substitute components (of the kit or assy)	Substituer les composants (du kit ou de l'ensemble)	Komponenten ersetzen (des Kits oder der Baugruppe)	Sostituire i componenti (del kito del gruppo)	Sustituir los componentes	Ersätta komponenterna (i satsen eller monteringen)
SUB FOR	Substitutes for	Remplace	Ersatz für	Sostituisce	Sustitución para	Ersätter
TEETH, Z	Number of gear teeth	Nombre de dents d'engrenages	Zahl der Zahnradzähne	Numero di denti dell'ingranaggio	Nº de dientes de engranaje	Antal redskapständer
TK	Thickness	Épaisseur	Stärke	Spessore	Espesor	Tjocklek
UP, UPPER	Upper	Supérieur	Oberer	Superiore	Superior	Övre
US	Undersize	Sous-dimension	Untergröße	Minorato	Subtamaño	Underdimension
USE WITH	Use with	À utiliser avec	Verwenden mit	Usare con	Usar con	Använd med
USE UNTIL EXHAUSTED	Use until exhausted	Utilisation jusqu'à épuisé	Verwenden, bis erschöpft	Usare fino all'esaurimento	Usar hasta agotar	Använda till uttömd
W/	With	Avec	Mit	Con	Con	Med; inklusive
W/O	Without	Sans	Ohne	Senza	Sin	Utän; exklusive
WHOLE GOODS	Whole goods	Marchandises entières	Vollständige Waren	Merci intere	Mercancías enteras	Hela varor
XLT	Extra Long Track	Chenille Extra Longue	Mit Extra Langem Laufwerk	Cingolo Extra Lungo	Cadena Extra Larga	Extra Laangt Larvband
VEC	Vehicle Electronic Controller	Controlleur Electronique Du Vehicule	Elektronisches Steuergeraet Des Fahrzeugs	Unità Di Comando Electronica Del Veicolo	Unidad de Control Electronico del Vehiculo	Elektronisk Fordonsstyrenhet
VLC	Vehicle Load Center	Coffret De Repartition Du Vehicule	Verteilerstation Des Fahrzeugs	Centro Di Carico Del Veicolo	Centro De Cargas Del Vehiculo	Fordonets Eicentral

TX1007195

0001-9

750J/850J CRAWLER DOZER

ALPHABETICAL INDEX

	PAGE		PAGE
A			
A/C COMPRESSOR HARDWARE KIT	1832-10	AIR CONDITIONER ON/OFF SWITCH	1832-2
A/C COMPRESSOR SHAFT SEAL KIT	1832-9	AIR CONDITIONER REAR COVER PLATE (S/N -XXXXXX).....	1810-4
A/C KIT, COMPRESSOR HARDWARE	1832-10	AIR CONDITIONER REAR COVER PLATE (S/N -XXXXXX).....	1810-6
ACCESS COVER OIL	1741-2	AIR CONDITIONER REAR COVER PLATE (S/N XXXXXX-).....	1810-7A
ACCESS COVER OIL	1741-3A	AIR CONDITIONER REAR COVER PLATE (S/N XXXXXX-).....	1810-7C
ACCESS COVER, ENGINE (750J).....	1912-2	AIR CONDITIONER SIDE COVER PLATE (S/N -XXXXXX).....	1810-4
ACCESS COVER, ENGINE (850J).....	1912-4	AIR CONDITIONER SIDE COVER PLATE (S/N -XXXXXX).....	1810-6
ACCESS COVER, ENGINE (850J) WASTE HANDLER.....	1912-6	AIR CONDITIONER SIDE COVER PLATE (S/N XXXXXX-).....	1810-7A
ACCESS COVER, REAR.....	1741-2	AIR CONDITIONER SIDE COVER PLATE (S/N XXXXXX-).....	1810-7C
ACCESS COVER, REAR.....	1741-3A	AIR CONDITIONING COMPRESSOR.....	1832-12
ACCESSORY, POWER AND JUNCTION BLOCK 24/12 VOLT	2006-2	AIR CONDITIONING COMPRESSOR.....	1832-14
ACCUMULATOR LABEL.....	1322-2	AIR CONDITIONING COMPRESSOR BELTS (850J)	1832-6
ACCUMULATOR, PILOT CONTROL (ALL HYDRAULIC).....	3262-14	AIR CONDITIONING COMPRESSOR BRACKETS (850J)	1832-12
ACCUMULATOR, PILOT CONTROL (OUTSIDE DOZER).....	3262-12	AIR CONDITIONING COMPRESSOR MANIFOLD	1832-12
ACTUATOR KIT, SEAT SUSPENSION (DELUXE).....	1821-20	AIR CONDITIONING COMPRESSOR PULLEY (850J)	1832-6
ACTUATORS AND MODULES, IGC HYDRAULIC CONTROL VALVE (FOURTH FUNCTION)	3262-9A	AIR CONDITIONING COMPRESSOR(850J)	1832-6
ACTUATORS AND MODULES, INTEGRATED GRADE CONTROL HYDRAULIC CONTROL VALVE.....	3262-8	AIR CONDITIONING CONDENSER FAN.....	1832-2
ADAPTER, ENGINE OIL COOLER (750J)	0419-2	AIR CONDITIONING CONDENSER WIRING HARNESS	1832-2
ADAPTER, ENGINE OIL COOLER (850J)	0419-4	AIR CONDITIONING CORE CONDENSER	1832-2
ADAPTER, ENGINE OIL COOLER BYPASS (850J)	0419-5	AIR CONDITIONING HOUSING.....	1832-2
ADAPTER, ENGINE OIL FILTER (750J)	0407-12	AIR CONDITIONING LOW AND HIGH PRESSURE SWITCH	1832-2
ADAPTER, ENGINE OIL FILTER (850J)	0407-14	AIR CONDITIONING PLUMBING.....	1832-4
ADAPTER, TURBO OIL DRAIN LINE (850J)	0416-2	AIR CONDITIONING PLUMBING GUARD (S/N -XXXXXX).....	1810-4
ADAPTER, TURBOCHARGER DRAIN LINE (850J)	0404-4	AIR CONDITIONING PLUMBING GUARD (S/N XXXXXX-).....	1810-7A
ADAPTER, TURBOCHARGER DRAIN LINE (850J)	0416-2	AIR CONDITIONING PLUMBING GUARD (S/N -XXXXXX).....	1810-6
ADJUSTER AND COMPONENT PARTS, TRACK CHAIN (850J).....	0133-10	AIR CONDITIONING PLUMBING GUARD (S/N XXXXXX-).....	1810-7C
ADJUSTER AND COMPONENT PARTS, TRACK CHAIN TENSION (850J).....	0133-10	AIR CONDITIONING RECEIVER DRYER.....	1832-2
ADJUSTER AND COMPONENT PARTS, TRACK CHAIN TENSION 750J	0133-14	AIR CONDITIONING REFRIGERANT LINE.....	1832-2
ADJUSTER AND COMPONENT PARTS, TRACK CHAIN 750J	0133-14	AIR CONDITIONING REFRIGERANT LINES	1832-4
AIR CLEANER (850J).....	0521-6	AIR CONDITIONER AND HEATER BLOWER SWITCH (S/N -XXXXXX).....	1810-6
AIR CLEANER (750J).....	0521-2	AIR CONDITIONER AND HEATER BLOWER SWITCH (S/N XXXXXX-).....	1810-7C
AIR CLEANER DECAL	1322-2	AIR CONTROL VALVE (AIR SUSPENSION).....	1821-28
AIR CLEANER DUST UNLOADER VALVE (750J)	0521-2	AIR COVER, RECIRCULATION (S/N -XXXXXX).....	1810-4
AIR CLEANER DUST UNLOADER VALVE(850J)	0521-6	AIR COVER, RECIRCULATION (S/N XXXXXX-).....	1810-6
AIR CLEANER FILTER ELEMENT PRIMARY AND SECONDARY (850J).....	0521-6	AIR COVER, RECIRCULATION (S/N XXXXXX-).....	1810-7A
AIR CLEANER FILTER ELEMENT(750J).....	0521-2	AIR COVER, RECIRCULATION (S/N XXXXXX-).....	1810-7C
AIR CLEANER INLET HOSE(750J)	0521-2	AIR FILTER ELEMENT(750J), PRIMARY	0521-2
AIR CLEANER INTAKE HOSE(850J)	0521-6	AIR FILTER ELEMENT(750J), SAFETY	0521-2
AIR CLEANER PRIMARY ELEMENT(850J).....	0521-6	AIR FILTER, FRESH AIR (UPPER).....	1831-8
AIR CLEANER SECONDARY ELEMENT(850J)	0521-6	AIR INLET (750J).....	0414-1
AIR CLEANER SENSOR (750J)	0521-2	AIR LINES (AIR SUSPENSION).....	1821-28
AIR CLEANER SENSOR (850J).....	0521-6	AIR PRE-CLEANER.....	0522-2
AIR CONDITIONER AND HEATER BLOWER SWITCH	1832-2		
AIR CONDITIONER AND HEATER BLOWER SWITCH (UPPER).....	1831-8		
AIR CONDITIONER AND HEATER TEMPERATURE SWITCH	1832-2		
AIR CONDITIONER AND HEATER TEMPERATURE SWITCH (UPPER)	1831-8		
AIR CONDITIONER FIELD KIT	1832-2		

ALPHABETICAL INDEX - CONTINUED

	PAGE		PAGE
AIR PRE-CLEANER CONVERSION KIT PARTS, ALSO ON AIR PRE-CLEANER PAGE(750J).....	1911-2	ANTI CAVITATION CHECK VALVE LIFT SECTION	
AIR PRE-CLEANER CONVERSION KIT, PARTS ALSO ON AIR PRE-CLEANER PAGE(850J).....	1911-4	ALL HYDRAULIC.....	3262-22
AIR PRE-CLEANER CONVERSION KIT, PARTS ALSO ON HOOD AND SOUND PAGE.....	0522-2	ARM, ENGINE ROCKER (750J).....	0402-3
AIR PRE-CLEANER INTAKE HOSE.....	0522-2	ARM, ENGINE ROCKER (850J).....	0402-4
AIR PRE-CLEANER ROTARY EJECTOR.....	0522-2	ARM, FRONT WINDOW WIPER.....	1814-6
AIR PRE-CLEANER SEPARATOR.....	0522-2	ARMREST (AIR SUSPENSION).....	1821-24
AIR SUSPENSION SEAT TOP PLATE.....	1821-26	ARMREST (DELUXE).....	1821-14
AIR SUSPENSION SEAT WIRING HARNESS FROM SEAT COMPRESSOR HARNESS TO FUSE BOX.....	1821-26	ARMREST PLATE (AIR SUSPENSION).....	1821-24
AIRDUCT WORK FOAM.....	1810-4	ARMREST PLATE (DELUXE).....	1821-14
AIRDUCT WORK FOAM (S/N XXXXXX-).....	1810-7A	ARMREST, STANDARD SEAT.....	1821-4
ALARM, BACKUP.....	2004-4	AUTOMATIC BELT TENSIONER (750J).....	0429-3
ALARM, 12 VOLT WITH SHUTTER.....	1676-8	AUTOMATIC BELT TENSIONER, ALTERNATOR (80 AMP)(850J).....	1672-8
ALL HYDRAULIC LIFT CYLINDER, INSIDE PUSHBEAM(750J).....	3263-16	AUXILIARY DRIVE (850J).....	0402-14
ALL HYDRAULIC LIFT CYLINDER, INSIDE PUSHBEAM(850J).....	3263-18	AUXILIARY DRIVE COVER (750J).....	0404-8
ALL HYDRAULIC(PAT) BLADE CUPPPED END BITS.....	3201-4	AUXILIARY HOSES AND PLUMBING, REAR.....	3263-10
ALTERNATOR AUTOMATIC BELT TENSIONER (80 AMP)(850J).....	1672-8	AUXILIARY PILOT CONTROL COVER PLATE (ALL HYDRAULIC).....	3262-14
ALTERNATOR BELT WITH ROPS WITHOUT A/C (850J).....	1672-8	AUXILIARY PILOT CONTROL COVER PLATE (OUTSIDE DOZER).....	3262-12
ALTERNATOR BRACKET (750J).....	0423-1	AUXILIARY PILOT CONTROL PLUMBING.....	2163-14
ALTERNATOR FAN (55AMP)(750J).....	1672-2	AUXILIARY PILOT CONTROLLER HANDLE/LEVER (WINCH).....	3262-6
ALTERNATOR HARNESS (750J) (80 AMP).....	1672-6	AUXILIARY PILOT CONTROLLER, AUXILIARY VALVE AND HYDRAULICS (WINCH).....	3262-6
ALTERNATOR HARNESS(55 AMP)(750J).....	1672-2	AUXILIARY SECTION CONTROL VALVE (ALL HYDRAULIC) (OUTSIDE DOZER).....	3262-26
ALTERNATOR HARNESS(80 AMP)(850J).....	1672-8	AUXILIARY SECTION VALVE LABEL (WINCH).....	3262-6
ALTERNATOR IDLER PULLEY SPACER OR SLEEVE (55 AMP)(750J).....	1672-2	AUXILIARY VALVE WITH AUXILIARY PILOT CONTROLLER(WINCH) AND HYDRAULICS.....	3262-6
ALTERNATOR PULLEY (55 AMP)(750J).....	1672-2	AUXILIARY VALVE(WINCH) CIRCUIT RELIEF VALVE.....	3262-6
ALTERNATOR PULLEY (55 AMP)(750J).....	1672-2		
ALTERNATOR REGULATOR/BRUSH (55 AMP) (750J).....	1672-2	B	
ALTERNATOR 55 AMP (750J).....	1672-2	BACK PAD CLIPS, SEAT, X-MAS TREE.....	1821-30
ALTERNATOR 80 AMP (750J).....	1672-6	BACK, SEAT PAD.....	1821-2
ALTERNATOR 80 AMP (850J).....	1672-8	BACKUP ALARM.....	2004-4
ALTERNATOR/FAN BELT (80 AMP)(750J) (POLY RIB).....	1832-12	BAFFLES, ENGINE SIDE SHIELD (750J).....	1912-2
ALTERNATOR/FAN BELT(55 AMP)(750J) (POLY RIB).....	1672-2	BAFFLES, ENGINE SIDE SHIELD (850J).....	1912-4
ANGLE CONTROL VALVE, COIL AND CARTRIDGE (PILOT CONTROLS) (ALL HYDRAULIC).....	3262-14	BAFFLES, ENGINE SIDE SHIELD (850J) WASTE HANDLER.....	1912-6
ANGLE CYLINDER BARREL (ALL HYDRAULIC).....	3265-18	BALL, C-FRAME PIVOT.....	3243-2
ANGLE CYLINDER BARREL (ALL HYDRAULIC) (850J).....	3265-22	BARREL, ANGLE CYLINDER (ALL HYDRAULIC).....	3265-18
ANGLE CYLINDER HEAD END PIN.....	3243-2	BARREL, ANGLE CYLINDER (ALL HYDRAULIC) (850J).....	3265-22
ANGLE CYLINDER HYDRAULIC HOSES (ALL HYDRAULIC).....	3263-8	BARREL, CAB TILT CYLINDER.....	1810-18
ANGLE CYLINDER PISTON (ALL HYDRAULIC).....	3265-18	BARREL, LIFT CYLINDER(ALL HYDRAULIC) (750J).....	3265-20
ANGLE CYLINDER PISTON (ALL HYDRAULIC) (850J).....	3265-22	BARREL, LIFT CYLINDER(OUTSIDE DOZER).....	3265-4
ANGLE CYLINDER ROD (ALL HYDRAULIC).....	3265-18	BARREL, TILT CYLINDER (ALL HYDRAULIC).....	3265-16
ANGLE HYDRAULIC CYLINDER COMPLETE (ALL HYDRAULIC).....	3265-14	BARREL, TILT CYLINDER(OUTSIDE DOZER) (750J).....	3265-10
ANGLE HYDRAULIC CYLINDER GUARD.....	3265-24	BARREL, TILT CYLINDER(OUTSIDE DOZER) (850J).....	3265-12
ANGLE SECTION CONTROL VALVE (ALL HYDRAULIC).....	3262-26	BASE, ENGINE OIL FILTER (750J).....	0407-14
ANGLE SECTION SPOOL VALVE PRESSURE RELIEF.....	3262-26	BASE, ENGINE OIL FILTER (850J).....	0407-14
ANTENNA, RADIO.....	2001-2	BATTERIES AND BATTERY CABLES.....	1671-2
		BATTERY CABLES NEGATIVE AND POSITIVE.....	1671-2
		BATTERY DISCONNECT LABEL.....	1671-2
		BATTERY GROUND STRAP.....	1671-2
		BATTERY HOLDOWN.....	1671-2
		BATTERY RUBBER BOOT.....	1671-2
		BATTERY STANDARD.....	1671-2
		BATTERY SWITCH, DISCONNECT.....	1671-2

000I-11

750J/850J CRAWLER DOZER

ALPHABETICAL INDEX - CONTINUED

	PAGE		PAGE
BATTERY TERMINAL COVER	1671-2	BLADE 146 INCH (CONVENIENC ASSEMBLY)(ALL	
BEAM, PUSH	3243-4	HYDRAULIC-850J)(LONG TRACK)	3201-2
BEARING CAP, MAIN AND THRUST (750J)	0404-2	BLADE 146 INCH (CONVENIENC ASSEMBLY)(ALL	
BEARING CAP, MAIN AND THRUST (850J)	0404-4	HYDRAULIC-850J)(LONG TRACK)	3201-4
BEARING ROLLER KIT (AIR SUSPENSION)	1821-26	BLADE 156 INCH (CONVENIENCE ASSEMBLY)	
BEARING, AUXILIARY DRIVE (850J)	0402-14	(750J ALL HYDRAULIC)(LOW GROUND PRESS)	3201-2
BEARING, CONNECTING ROD (750J)	0403-1	BLADE 156 INCH (CONVENIENCE ASSEMBLY)	
BEARING, CONNECTING ROD (850J)	0403-2	(750J ALL HYDRAULIC)(LOW GROUND PRESS)	3201-4
BEARING, ENGINE MAIN AND THRUST	0401-2	BLADE 158 INCH (CONVENIENCE ASSEMBLY)	
BEARING, ENGINE MAIN AND THRUST (750J)	0401-1	(ALL HYDRAULIC-850J)(WIDE LONG TRACK)	3201-2
BEARING, HYDROSTATIC PUMP PISTON		BLADE 158 INCH (CONVENIENCE ASSEMBLY)	
(750J)	0355-12	(ALL HYDRAULIC-850J)(WIDE LONG TRACK)	3201-4
BEARING, HYDROSTATIC PUMP PISTON		BLADE 168 INCH (CONVENIENCE ASSEMBLY)	
(850J)	0355-32	(ALL HYDRAULIC-850J)(LOW GROUND PRESS)	3201-2
BEARING, HYDROSTATIC SWASHPLATE		BLADE 168 INCH (CONVENIENCE ASSEMBLY)	
(750J)	0355-12	(ALL HYDRAULIC-850J)(LOW GROUND PRESS)	3201-4
BEARING, HYDROSTATIC SWASHPLATE		BLADE, CUTTING EDGES AND END BITS	
(850J)	0355-32	STRAIGHT	3201-8
BEARINGS, CARRIER ROLLER	0133-16	BLADE, HYDRAULIC SIX WAY LABEL	
BELT TENSIONER, ALTERNATOR AUTOMATIC		(S/N -XXXXXX)	1810-4
(850J)	1672-8	BLADE, HYDRAULIC SIX WAY LABEL	
BELT TENSIONER, AUTOMATIC (750J)	0429-3	(S/N XXXXX-)	1810-7A
BELT, AIR CONDITIONING COMPRESSOR	1832-12	BLADE, REAR WIPER	1814-8
BELT, ALTERNATOR WITH ROPS WITHOUT A/C		BLADE, SEMI-U	3201-6
(850J)	1672-8	BLOCK ASSEMBLY, ENGINE SHORT (750J)	0450-2
BELT, ALTERNATOR/FAN (55 AMP)(750J)		BLOCK ASSEMBLY, ENGINE SHORT (850J)	0450-4
(POLY RIB)	1672-2	BLOCK ASSEMBLY, REMANUFACTURED COMPLETE	
BELT, ALTERNATOR/FAN (80 AMP)(750J)		(850J)	0450-4
(POLY RIB)	1832-12	BLOCK, ENGINE CYLINDER (750J)	0404-2
BELT, TWO INCH SEAT	1821-2	BLOWER FAN HEATER (UPPER)	1831-8
BELTS, AIR CONDITIONING COMPRESSOR		BLOWER SWITCH, AIR CONDITIONER AND	
(850J)	1832-6	HEATER	1832-2
BIT, BLADE END	3201-4	BLOWER SWITCH, HEATER AND AIR	
BIT, END SEMI-U	3201-6	CONDITIONER (UPPER)	1831-8
BLADE , FRONT WINDOW WIPER	1814-6	BLOWER WITH MOTOR ROPS UNDER	
BLADE ANGLE HYDRAULIC CYLINDER		SEAT HEATER	1831-2
(ALL HYDRAULIC)	3265-18	BOLTS, BLADE	3201-4
BLADE ANGLE HYDRAULIC CYLINDER HOSES		BOOT CLIP KIT (AIR SUSPENSION)	1821-26
(ALL HYDRAULIC)	3263-8	BOOT KIT (AIR SUSPENSION)	1821-26
BLADE BOLTS	3201-4	BOOT KIT (DELUXE)	1821-18
BLADE CUPPED END BIT, SEMI-U	3201-6	BOOT PILOT CONTROL	
BLADE CUPPED END BIT, STRAIGHT	3201-8	(ALL HYDRAULIC)	3262-14
BLADE CUPPED END BITS FOR ALL HYDRAULIC		BOOT PILOT CONTROL	
(PAT)	3201-4	(OUTSIDE DOZER)	3262-12
BLADE CUTTING EDGE	3201-2	BOOT, BATTERY BOOT	1671-2
BLADE CUTTING EDGE	3201-4	BOOT, SINGLE LEVER CONTROL	0315-6
BLADE CUTTING EDGE SEMI-U	3201-6	BOOT, SINGLE LEVER CONTROL	
BLADE CUTTING EDGE, STRAIGHT	3201-8	(CONTINUED)	0315-8
BLADE END BIT	3201-4	BORE SEAL KIT, CAB TILT CYLINDER	1810-18
BLADE LIFT CYLINDER HYDRAULIC HOSES		BOX, TOOL (REAR STORAGE COMPARTMENT)	2005-2
(OUTSIDE DOZER)(750J)	3263-2	BRACKET FOR CAB HARNESS WITH INTEGRATED	
BLADE LIFT CYLINDER HYDRAULIC HOSES		GRADE CONTROL	1674-16
(OUTSIDE DOZER)(850J)	3263-4	BRACKET FOR HYDRAULIC FAN DRIVE,	
BLADE PINS	3201-2	HYDRAULIC FILTER	2164-6
BLADE PINS	3201-4	BRACKET MOTOR ATTACHING, ROPS UNDER SEAT	
BLADE TILT CYLINDER COMPLETE AND		HEATER	1831-2
COMPONENT PARTS(ALL HYDRAULIC)	3265-16	BRACKET, AIR CONDITIONING COMPRESSOR	1832-14
BLADE TILT CYLINDER HYDRAULIC HOSES		BRACKET, ALTERNATOR (750J)	0423-1
(OUTSIDE DOZER)	3263-6	BRACKET, FINAL FUEL FILTER (750J)	0420-4
BLADE TILT CYLINDER HYDRAULIC HOSES		BRACKET, FUEL FILTER (850J)	0420-8
(OUTSIDE DOZER)	3263-20	BRACKET, FUEL LINE (750J)	0420-6
BLADE TILT CYLINDER HYDRAULIC HOSES		BRACKET, HYDRAULIC FILTER	2164-4
(OUTSIDE DOZER)	3263-22	BRACKET, LIGHT ROPS	1673-8
BLADE 129.75 INCH (CONVENIENCE ASSEMBLY)		BRACKET, LIGHT(CAB FIELD OR OPTIONAL)	1673-6
(750J ALL HYDRASULIC)(STANDARD AND LT)	3201-2	BRACKET, PARK LOCK SUPPORT	1115-2
BLADE 129.75 INCH (CONVENIENCE ASSEMBLY)		BRACKET, POWER TRAIN/ENGINE CRADLE	0540-2
(750J ALL HYDRASULIC)(STANDARD AND LT)	3201-4	BRACKET, PRIMARY FUEL FILTER (750J)	0420-2

ALPHABETICAL INDEX - CONTINUED

	PAGE		PAGE
BRACKET, SINGLE LEVER CONTROL	0315-6	BY PASS VALVE, HYDRAULIC COOLER	
BRACKET, SINGLE LEVER CONTROL		, BRACKETS, HYDRAULIC HOSES/FITTI.....	0511-10
(CONTINUED).....	0315-8	BYPASS VALVE OIL COOLER/TANK	0362-2
BRACKET, VEHICLE ELECTRICAL CENTER	1674-8	BYPASS VALVE OIL COOLER/TANK	0362-4
BRACKETS WITH TRACK CHAIN IDLER AND		BYPASS VALVE PILOT, TANK	0362-2
COVER.....	0133-12	BYPASS VALVE PILOT, TANK	0362-4
BRACKETS, AIR CONDITIONING COMPRESSOR		BYPASS VALVE, HYDROSTATIC CHARGE FILTER	0362-2
(850J)	1832-6	BYPASS VALVE, HYDROSTATIC CHARGE FILTER	0362-4
BRACKETS, COOLER WITH INTEGRATED GRADE			
CONTROL.....	0511-12		
BRACKETS, HYDRAULIC COOLER BY			
PASS VALVE, HYDRAULIC HOSES/FITTINGS.....	0511-10	C	
BRAKE CARTRIDGE VALVE HYDROSTATIC	0362-2	C-FRAME	3243-2
BRAKE CARTRIDGE VALVE HYDROSTATIC	0362-4	C-FRAME ALL HYDRAULIC MOUNT BUSHING	1741-2
BRAKE HOSES, PARKING.....	0363-2	C-FRAME ALL HYDRAULIC MOUNT BUSHING	1741-3A
BRAKE PUMP OFF RELIEF VALVE.....	0362-2	C-FRAME BUSHINGS	3243-2
BRAKE PUMP OFF RELIEF VALVE	0362-4	C-FRAME LUBRICATION HOSES	3243-2
BRAKE/CAB SELECTOR VALVE	0362-2	C-FRAME PINS	3243-2
BRAKE/CAB SELECTOR VALVE	0362-4	C-FRAME PITCH	3243-2
BRAKE/DECELERATOR PEDAL	0515-4	CAB COMPONENTS	
BRAKE/DECELERATOR SENSOR, ROTARY	0515-4	(S/N -XXXXXX).....	1810-4
BRAKE/DECELERATOR SHAFT.....	0515-4	CAB COMPONENTS	
BRAKE/DECELERATOR SUPPORT	0515-4	(S/N XXXXXX-).....	1810-7A
BRAKE, FINAL DRIVES	0201-2	CAB COMPONENTS (CONTINUED)	
BRAKE, FINAL DRIVES		(S/N -XXXXXX).....	1810-6
(CONTINUED).....	0201-4	CAB COMPONENTS (CONTINUED)	
BRAKE, FINAL DRIVES		(S/N XXXXXX-).....	1810-7C
(CONTINUED).....	0201-6	CAB DOOR FRAME AND GLASS.....	1813-2
BULB, DOME LIGHT	1810-7C	CAB DOOR HOLD OPEN	1813-4
BULB, DOMELIGHT	1810-6	CAB DOOR HOLD OPEN HANDLE GRIP	1813-4
BULB, LIGHT (CAB FIELD OR OPTIONAL).....	1673-6	CAB DOOR HOLD OPEN LATCH	1813-4
BULB, LIGHT CAB STANDARD.....	1673-2	CAB DOOR LATCH.....	1813-2
BULB, LIGHT ROPS	1673-8	CAB DOOR LATCH COVER	1813-2
BULB, WORK LIGHT	1673-4	CAB DOORS AND LATCHES.....	1813-2
BULKHEAD PLATE (ALL HYDRAULIC)		CAB FIELD OR OPTIONAL WORK LIGHT HARNESS.....	1673-6
(750J)	3263-20	CAB FIELD OR OPTIONAL WORK LIGHTS	
BULKHEAD PLATE (ALL HYDRAULIC)		SWITCH	1673-6
(850J)	3263-22	CAB FRESH AIR FILTER	
BULKHEAD PLATE (OUTSIDE DOZER).....	3263-6	(UPPER).....	1831-8
BULKHEAD PLATE, REAR HYDRAULIC	1927-2	CAB FUSEBLOCK LABEL	
BULKHEAD PLATE, REAR HYDRAULIC	1927-4	(S/N -XXXXXX).....	1810-6
BUMPER KIT (AIR SUSPENSION)	1821-28	CAB FUSEBLOCK LABEL	
BUMPER, DOOR.....	1813-4	(S/N XXXXXX-).....	1810-7C
BUSHING AND EXTENDED LIFE BUSHING, TRACK		CAB HARNESS WITH INTEGRATED GRADE	
CHAIN (750J).....	0132-2	CONTROL AND BRACKET.....	1674-16
BUSHING AND EXTENDED LIFE BUSHING, TRACK		CAB HEADLINER, FRONT (WITH LOUVERS)	
CHAIN (750J).....	0132-4	(S/N -XXXXXX).....	1810-4
BUSHING AND EXTENDED LIFE BUSHING, TRACK		CAB HEADLINER, FRONT (WITH LOUVERS)	
CHAIN (850J).....	0132-8	(S/N XXXXXX-).....	1810-7A
BUSHING AND EXTENDED LIFE BUSHING, TRACK		CAB HEATER (UPPER).....	1831-8
CHAIN (850J).....	0132-10	CAB HEATER HOSE	1831-6
BUSHING KIT, TRACK CHAIN PIN AND (750J)	0132-2	CAB HEATER PLUMBING.....	1831-6
BUSHING KIT, TRACK CHAIN PIN AND (750J)	0132-4	CAB HEATER THERMAL	
BUSHING KIT, TRACK CHAIN PIN AND (850J)	0132-8	(UPPER).....	1831-8
BUSHING KIT, TRACK CHAIN PIN AND (850J)	0132-10	CAB HEATER THERMOSTAT	
BUSHING WITH OUTSIDE DOZER, LIFT		(UPPER).....	1831-8
CYLINDER YOKE TUBE	1741-2	CAB HI-INTENSITY WORK LIGHTS	1673-6
BUSHING WITH OUTSIDE DOZER, LIFT		CAB LIGHTS AND LAMP HOUSINGS, STANDARD	1673-2
CYLINDER YOKE TUBE	1741-3A	CAB LIGHTS WIRING HARNESS, STANDARD	1673-2
BUSHING, C-FRAME ALL HYDRAULIC MOUNT		CAB LIGHTS, HI-INTENSITY	1673-6
BUSHING	1741-2	CAB NOISE REDUCTION FOAM/ISOLATOR	1807-2
BUSHING, C-FRAME ALL HYDRAULIC MOUNT		CAB PARTS	
BUSHING	1741-3A	(S/N XXXXXX-).....	1810-7A
BUSHING, CAMSHAFT (750J).....	0404-2	CAB PARTS (S/N -XXXXXX)	1810-4
BUSHING, CAMSHAFT (850J).....	0402-2	CAB TILT CYLINDER BARREL	1810-18
BUSHING, TURBO OIL DRAIN LINE (850J).....	0416-2	CAB TILT CYLINDER COMPONENTS.....	1810-18
BUSHINGS C-FRAME	3243-2	CAB TILT CYLINDER PISTON	1810-18

000I-13

750J/850J CRAWLER DOZER

ALPHABETICAL INDEX - CONTINUED

	PAGE		PAGE
CAB TILT CYLINDER ROD.....	1810-18	CHAIN BUSHING AND EXTENDED LIFE	
CAB TILT CYLINDER SEAL KITS.....	1810-18	BUSHING, TRACK (850J).....	0132-8
CAB TILT, HAND PUMP FOR.....	0362-2	CHAIN BUSHING AND EXTENDED LIFE	
CAB TILT, HAND PUMP FOR.....	0362-4	BUSHING, TRACK (850J).....	0132-10
CAB UP/DOWN SELECTOR VALVE.....	0362-2	CHAIN DRIVE SPROCKET 850J, TRACK	
CAB UP/DOWN SELECTOR VALVE.....	0362-4	RECESSED WITH WASTE HANDLER.....	0132-16
CAB WELDMENT.....	1811-4	CHAIN DRIVE SPROCKET, TRACK.....	0132-16
CAB WINDOW.....	1814-2	CHAIN GUIDES.....	0131-6
CAB WIRING HARNESS WITH INTEGRATED GRADE		CHAIN GUIDES, TRACK (CENTER)(ON 8 ROLLER	
CONTROL.....	1674-16	MACHINES ONLY).....	0131-12
CAB/BRAKE SELECTOR VALVE.....	0362-2	CHAIN PIN AND BUSHING KIT, TRACK	
CAB/BRAKE SELECTOR VALVE.....	0362-4	(750J).....	0132-2
CAB/ROPS HARNESS.....	1674-6	CHAIN PIN AND BUSHING KIT, TRACK	
CAB/ROPS MOUNTS AND ISOLATORS.....	1811-6	(750J).....	0132-4
CAB/ROPS ROOF HARNESS.....	1674-6	CHAIN PIN AND BUSHING KIT, TRACK	
CAB/ROPS TIPPING PROCEDURE LABEL.....	1322-2	(850J).....	0132-8
CAB/ROPS WIRING HARNESS.....	1674-6	CHAIN PIN AND BUSHING KIT, TRACK	
CAB, RECTANGULAR LOUVER		(850J).....	0132-10
(S/N -XXXXXX).....	1810-4	CHAIN SHOE (750J), TRACK MASTER SHOE AND	
CAB, RECTANGULAR LOUVER		EXTREME SERVICE.....	0132-2
(S/N XXXXXX-).....	1810-7A	CHAIN SHOE (750J), TRACK MASTER SHOE AND	
CABLES, NEGATIVE AND POSITIVE BATTERY.....	1671-2	EXTREME SERVICE.....	0132-4
CAM CYLINDER LOCK		CHAIN SHOE (850J), TRACK MASTER SHOE AND	
(S/N -XXXXXX).....	1810-6	EXTREME SERVICE.....	0132-8
CAM CYLINDER LOCK		CHAIN SHOE (850J), TRACK MASTER SHOE AND	
(S/N XXXXXX-).....	1810-7C	EXTREME SERVICE.....	0132-10
CAM KIT, SEAT SUSPENSION (DELUXE).....	1821-20	CHAIN WITH EXTENDED LIFE BUSHINGS, TRACK	
CAMSHAFT (750J).....	0402-1	(COMPLETE)(750J).....	0132-6
CAMSHAFT (850J).....	0402-2	CHAIN WITH EXTENDED LIFE BUSHINGS, TRACK	
CAN TERMINATION RESISTOR (850J).....	1674-12	(COMPLETE)(850J).....	0132-12
CAN TERMINATION RESISTOR.....	1674-6	CHAIN WITH EXTENDED LIFE BUSHINGS, TRACK	
CAN TERMINATION RESISTOR (750J).....	1674-10	(COMPLETE)(850J).....	0132-14
CAP WIPER WASHER RESERVOIR.....	1814-4	CHAIN WITH EXTREME SERVICE SHOES AND	
CAP WIPER WASHERTANK.....	1814-4	EXTENDED LIFE BUSHINGS (750J),TRACK.....	0132-6
CAP, FAST FUEL RECEIVER.....	0564-4	CHAIN WITH EXTREME SERVICE SHOES AND	
CAP, FAST FUEL TANK FILLER.....	0564-4	EXTENDED LIFE BUSHINGS (850J),TRACK.....	0132-12
CAP, FUEL TANK FILLER.....	0564-2	CHAIN WITH EXTREME SERVICE SHOES AND	
CAP, LIFT VALVE SECTION SPOOL.....	3262-22	EXTENDED LIFE BUSHINGS (850J),TRACK.....	0132-14
CAP, MAIN AND THRUST BEARING (750J).....	0404-2	CHAIN WITH EXTREME SERVICE SHOES, TRACK	
CAP, MAIN AND THRUST BEARING (850J).....	0404-4	(COMPLETE)(750J).....	0132-6
CAP, RADIATOR (750J).....	0511-6	CHAIN WITH EXTREME SERVICE SHOES, TRACK	
CAP, RADIATOR (850J).....	0511-8	(COMPLETE)(850J).....	0132-12
CAP,ENGINE OIL FILLER (750J).....	0407-1	CHAIN WITH EXTREME SERVICE SHOES, TRACK	
CAPSULE, PILOT CONTROL METERING.....	3262-16	(COMPLETE)(850J).....	0132-14
CARRIER ROLLER BEARINGS.....	0133-16	CHAIN, TRACK LUBRICATED	
CARRIER ROLLER COVER.....	0133-16	WITHOUT SHOES (750J).....	0132-2
CARRIER ROLLER SUPPORT.....	0133-16	CHAIN, TRACK LUBRICATED	
CARRIER ROLLER WITH COMPONENT PARTS.....	0133-16	WITHOUT SHOES (750J).....	0132-4
CARRIER, ENGINE ROCKER ARM COVER (850J).....	0402-8	CHAIN, TRACK LUBRICATED	
CARTRIDGE VALVE (HYDROSTATIC) BRAKE.....	0362-2	WITHOUT SHOES (850J).....	0132-8
CARTRIDGE VALVE (HYDROSTATIC) BRAKE.....	0362-4	CHAIN, TRACK LUBRICATED	
CARTRIDGE VALVE, PILOT CONTROLS		WITHOUT SHOES (850J).....	0132-10
(ALL HYDRAULIC).....	3262-14	CHAIN, TRACK, LUBRICATED WITH	
CARTRIDGE VALVE, PILOT CONTROLS		SHOES (COMPLETE) (750J).....	0132-6
(OUTSIDE DOZER).....	3262-12	CHAIN, TRACK, LUBRICATED WITH	
CARTRIDGE, ANGLE PILOT CONTROL VALVE		SHOES (COMPLETE) (850J).....	0132-12
COIL AND (ALL HYDRAULIC).....	3262-14	CHAIN, TRACK, LUBRICATED WITH	
CENTER GUARD.....	1741-2	SHOES (COMPLETE) (850J).....	0132-14
CENTER GUARD.....	1741-3A	CHARGE FILTER BYPASS VALVE, HYDROSTATIC.....	0362-2
CENTER ROLLER GUIDE(LOW GROUND PRESSURE,		CHARGE FILTER BYPASS VALVE, HYDROSTATIC.....	0362-4
LONG TRACK AND LONG TRACK, WIDE TRACK.....	0131-10	CHARGE PRESSURE SENSOR, HYDROSTATIC.....	0362-2
CENTER TRACK CHAIN GUIDES(ON 8 ROLLER		CHARGE PRESSURE SENSOR, HYDROSTATIC.....	0362-4
MACHINES ONLY).....	0131-12	CHARGE RELIEF POPPET, HYDROSTATIC TRACK	
CHAIN BUSHING AND EXTENDED LIFE		DRIVE MOTOR END CAP (750J).....	0355-18
BUSHING, TRACK (750J).....	0132-2	CHARGE RELIEF POPPET, HYDROSTATIC TRACK	
CHAIN BUSHING AND EXTENDED LIFE		DRIVE MOTOR END CAP (850J).....	0355-38
BUSHING, TRACK (750J).....	0132-4		

ALPHABETICAL INDEX - CONTINUED

	PAGE		PAGE
CHARGE SYSTEM, HYDROSTATIC PUMP (750J)	0355-4	CONNECTOR, TORQUE TORSIONAL COUPLING (750J)	0325-2
CHARGE SYSTEM, HYDROSTATIC PUMP (850J)	0355-24	CONNECTOR, TORQUE TORSIONAL COUPLING (850J)	0325-4
CHART, PERIODIC SERVICE	1322-2	CONNECTORS AND FITTINGS CONTROL VALVE 2 SPOOL OUTSIDE DOZER	3262-20
CHECK VALVE, ANTI CAVITATION LIFT SECTION ALL HYDRAULIC	3262-22	CONNECTORS AND FITTINGS CONTROL VALVE 3 SPOOL OUTSIDE DOZER	3262-24
CHRISTMAS TREE CLIP (S/N -XXXXXX)	1810-4	CONNECTORS AND FITTINGS CONTROL VALVE 3 SPOOL PAT DOZER	3262-28
CHRISTMAS TREE CLIP (S/N XXXXXX-)	1810-7A	CONNECTORS AND FITTINGS CONTROL VALVE 4 SPOOL PAT DOZER	3262-32
CHROME EXHAUST STACK AND MUFFLER (750J)	0531-2	CONTROL LEVER (JOYSTICK) INTEGRATED GRADE & PILOT ENABLE SWITCH	3262-34
CHROME EXHAUST STACK AND MUFFLER (850J)	0531-4	CONTROL LEVER, HYDRAULIC (PILOT CONTROLS) (ALL HYDRAULIC)	3262-14
CIRCUIT RELIEF VALVE, AUXILIARY VALVE (WINCH)	3262-6	CONTROL LEVER, HYDRAULIC (PILOT CONTROLS) (OUTSIDE DOZER)	3262-12
CLIP, CHRISTMAS TREE (S/N -XXXXXX)	1810-4	CONTROL LEVER, HYDROSTATIC/TRANSMISSION (CONTINUED)	0315-8
CLIP, CHRISTMAS TREE (S/N XXXXXX-)	1810-7A	CONTROL LEVER, PARK LOCK	1115-2
CLIPPED CORNER SHOES (750J)	0132-6	CONTROL LEVER, TRANSMISSION/HYDROSTATIC	0315-6
CLIPPED TRACK SHOE (750J)	0132-2	CONTROL MOTOR, HYDROSTATIC TRACK DRIVE MOTOR (750J)	0355-20
CLIPPED TRACK SHOE (750J)	0132-4	CONTROL MOTOR, HYDROSTATIC TRACK DRIVE MOTOR (850J)	0355-40
CLIPS, X-MAS TREE, SEAT BACK	1821-30	CONTROL PILOT VALVE, PRESSURE (750J)	0355-14
CLOTH HEADREST (AIR SUSPENSION)	1821-22	CONTROL PILOT VALVE, PRESSURE (850J)	0355-34
CLOTH SEAT (AIR SUSPENSION)	1821-22	CONTROL UNIT WITH INTEGRATED GRADE CONTROL, ELECTRONIC/HYDRAULIC	0511-10
CLOTH SEAT (DELUXE)	1821-12	CONTROL UNIT, ENGINE	0575-2
CLOTH SEAT BACK (AIR SUSPENSION)	1821-22	CONTROL UNIT, TRANSMISSION	0375-2
CLOTH SEAT PAD (AIR SUSPENSION)	1821-22	CONTROL VALVE ANGLE SECTION (ALL HYDRAULIC)	3262-26
CLUTCH & PULLEY KIT, A/C COMPRESSOR	1832-14	CONTROL VALVE AUXILIARY SECTION (ALL HYDRAULIC) (OUTSIDE DOZER)	3262-26
CLUTCH, STARTING MOTOR	0422-2	CONTROL VALVE CONVENIENCE ASSEMBLY (2 SPOOL) OUTSIDE DOZER, HYDRAULIC	3262-20
CYLINDER COMPLETE, TILT HYDRAULIC (ALL HYDRAULIC)	3265-14	CONTROL VALVE CONVENIENCE ASSEMBLY (3 SPOOL) OUTSIDE DOZER, HYDRAULIC	3262-24
COIL AND CARTRIDGE, ANGLE PILOT CONTROL VALVE (ALL HYDRAULIC)	3262-14	CONTROL VALVE CONVENIENCE ASSEMBLY (3 SPOOL) PAT DOZER, HYDRAULIC	3262-28
COIL, HYDROSTATIC CONTROL VALVE SOLENOID VALVE AND	0362-2	CONTROL VALVE CONVENIENCE ASSEMBLY (4 SPOOL) PAT DOZER, HYDRAULIC	3262-32
COIL, HYDROSTATIC CONTROL VALVE SOLENOID VALVE AND	0362-4	CONTROL VALVE HYDRAULIC HOSE TO HYDRAULIC FILTER (ALSO WITH WINCH)	2164-4
COLD WEATHER START AID SWITCH/ETHER	0505-2	CONTROL VALVE INLETS, OUTLETS AND TIE RODS	3262-18
COLD WEATHER STARTING AID/ETHER	0505-2	CONTROL VALVE MOUNTING PLATE, INTEGRATED GRADE	3262-8
COMPARTMENT, REAR STORAGE (TOOLBOX)	2005-2	CONTROL VALVE PRESSURE SWITCH (2 SPOOL) OUTSIDE DOZER, HYDRAULIC	3262-20
COMPENSATOR, IGC HYDRAULIC CONTROL VALVE (FOURTH FUNCTION)	3262-9A	CONTROL VALVE PRESSURE SWITCH (3 SPOOL) OUTSIDE DOZER, HYDRAULIC	3262-24
COMPENSATOR, INTEGRATED GRADE CONTROL HYDRAULIC CONTROL VALVE	3262-8	CONTROL VALVE PRESSURE SWITCH (3 SPOOL) PAT DOZER, HYDRAULIC	3262-28
COMPLETE BLOCK ASSEMBLY, REMANUFACTURED (850J)	0450-4	CONTROL VALVE PRESSURE SWITCH (4 SPOOL) PAT DOZER, HYDRAULIC	3262-32
COMPONENTS, CAB (S/N -XXXXXX)	1810-4	CONTROL VALVE SOLENOID VALVE AND COIL HYDROSTATIC	0362-2
COMPONENTS, CAB (S/N XXXXXX-)	1810-7A	CONTROL VALVE SOLENOID VALVE AND COIL HYDROSTATIC	0362-4
COMPONENTS, CAB TILT CYLINDER	1810-18	CONTROL VALVE TILT SECTION ALL HYDRAULIC OR OUTSIDE DOZER, HYDRAULIC	3262-26
COMPONENTS, ROPS	1810-2		
COMPRESSION LATCH-REAR STORAGE COMPARTMENT (TOOLBOX)	2005-2		
COMPRESSOR, AIR CONDITIONING	1832-12		
COMPRESSOR, AIR CONDITIONING	1832-14		
COMPRESSOR, AIR CONDITIONING (850J)	1832-6		
COMPRESSOR, 12 VOLT (AIR SUSPENSION)	1821-26		
CONDENSER FAN AIR CONDITIONING	1832-2		
CONDENSER, AIR CONDITIONING CORE	1832-2		
CONDITIONER, COOLANT (750J)	1369-1		
CONNECTING ROD, ENGINE (750J)	0403-1		
CONNECTING ROD, ENGINE (850J)	0403-2		

000I-15

750J/850J CRAWLER DOZER

ALPHABETICAL INDEX - CONTINUED

	PAGE		PAGE
CONTROL VALVE TO BLADE LIFT CYLINDER		CORE, EVAPORATOR (UPPER)	1831-8
HYDRAULIC HOSES(OUTSIDE DOZER)(750J)	3263-2	CORE, HEATER (UPPER)	1831-8
CONTROL VALVE TO BLADE LIFT CYLINDER		CORE, ROPS UNDER SEAT HEATER	1831-2
HYDRAULIC HOSES(OUTSIDE DOZER)(850J)	3263-4	COUNTERWEIGHT WITH DOORS, REAR	1749-4
CONTROL VALVE TO HYDRAULIC PUMP		COUNTERWEIGHT, FRONT	1749-2
PRESSURE HOSE (ALSO WITH WINCH)	2163-4	COUPLER, FLYWHEEL	
CONTROL VALVE, ELECTRONIC DISPLACEMENT		(750J)	0325-2
(750J)	0355-20	COUPLER, FLYWHEEL	
CONTROL VALVE, ELECTRONIC DISPLACEMENT		(850J)	0325-4
(850J)	0355-40	COUPLER, LOVEJOY	
CONTROL VALVE, HYDRAULIC(FOR INTEGRATED		(750J)	0325-2
GRADE CONTROL AND COMPONENTS)	3262-8	COUPLER, LOVEJOY	
CONTROL VALVE, HYDRAULIC, IGC, (FOURTH		(850J)	0325-4
FUNCTION)	3262-9A	COUPLING, FUEL DIAGNOSTIC (850J)	0420-8
CONTROL VALVE, HYDROSTATIC INTEGRATED	0362-2	COUPLING, HYDROSTATIC PUMP	
CONTROL VALVE, HYDROSTATIC INTEGRATED	0362-4	(750J)	0355-4
CONTROL VALVE, HYDROSTATIC PUMP		COUPLING, HYDROSTATIC PUMP	
DISPLACEMENT (750J)	0355-14	(850J)	0355-24
CONTROL VALVE, HYDROSTATIC PUMP		COVER BATTERY TERMINAL	1671-2
DISPLACEMENT (850J)	0355-34	COVER PLATE - CAB, FUSE	
CONTROL WITH SPEED IN GRIP, SINGLE LEVER	0315-6	(S/N -XXXXXX)	1810-4
CONTROL, PILOT PRESSURE		COVER PLATE - CAB, FUSE	
(750J)	0355-20	(S/N XXXXXX-)	1810-7A
CONTROL, PILOT PRESSURE		COVER PLATE WELDMENT-LIGHT BAR(RIGHT AND	
(850J)	0355-40	LEFT SIDE)	1673-4
CONTROL, SEAT SLIDE (ALL SEATS)	1821-8	COVER PLATE WITH TUBE, HYDRAULIC	
CONTROL, SEAT TILT (ALL SEATS)	1821-8	RESERVOIR	2164-2
CONTROL, SINGLE LEVER		COVER PLATE, AUXILIARY PILOT CONTROL	
(CONTINUED)	0315-8	(ALL HYDRAULIC)	3262-14
CONTROLLER, AUXILIARY PILOT VALVE AND		COVER PLATE, AUXILIARY PILOT CONTROL	
HYDRAULICS (WINCH)	3262-6	(OUTSIDE DOZER)	3262-12
CONTROLLER, ENGINE (850J)	0475-2	COVER PLATE, FUSE	1810-2
CONTROLLER, HYDRAULIC COOLER AND		COVER PLATE, HYDROSTATIC RESERVOIR	
PLUMBING INTEGRATED GRADE	0511-12	ACCESS	0364-4
CONVERSION KIT PARTS ALSO ON AIR PRE-		COVER PLATE, REAR HYDRAULIC	1927-2
CLEANER PAGE(850J), AIR PRE-CLEANER	1911-4	COVER PLATE, REAR HYDRAULIC	1927-4
CONVERSION KIT PARTS, ALSO FOUND ON AIR		COVER PLATE, TRACK FRAME	0131-2
PRE-CLEANER PAGE(750J), AIR PRECLEANER	1911-2	COVER, AUXILIARY DRIVE (750J)	0404-8
CONVERSION KIT, PARTS ALSO ON HOOD AND		COVER, AUXILIARY DRIVE (850J)	0402-14
SOUND ABSORBTION PAGE, PRE-CLEANER	0522-2	COVER, CAB DOOR LATCH	1813-2
COOLANT CONDITIONER (750J)	1369-1	COVER, CARRIER ROLLER	0133-16
COOLANT DRAIN VALVE, ENGINE (750J)	0404-2	COVER, ENGINE ACCESS (750J)	1912-2
COOLANT DRAIN VALVE, ENGINE (850J)	0404-4	COVER, ENGINE ACCESS (850J)	1912-4
COOLANT HEATER, ENGINE	0505-4	COVER, ENGINE ACCESS (850J)	
COOLANT HEATER, FUEL FIRED	0505-6	WASTE HANDLER	1912-6
COOLANT TEMPERATURE SENSOR, ENGINE		COVER, ENGINE OIL COOLER (850J)	0419-4
(850J)	0578-5	COVER, ENGINE OIL FILLER OPENING (750J)	0407-1
COOLER /TANK BYPASS VALVE OIL	0362-2	COVER, ENGINE ROCKER ARM (750J)	0402-7
COOLER /TANK BYPASS VALVE OIL	0362-4	COVER, ENGINE ROCKER ARM (850J)	0402-8
COOLER AND PLUMBING FOR INTEGRATED		COVER, ENGINE VALVE (850J)	0402-8
GRADE CONTROL HYDRAULIC	0511-12	COVER, FLY WHEEL	0540-2
COOLER, BRACKETS, HYDRAULIC		COVER, FLYWHEEL HOUSING (850J)	0433-4
HOSES/FITTINGS AND BYPASS VALVE	0511-10	COVER, HEATER TOP (UPPER)	1831-8
COOLER, ENGINE OIL (750J)	0419-2	COVER, HORN SWITCH	
COOLER, ENGINE OIL (850J)	0419-4	(CONTINUED)	0315-8
COOLER, HYDROSTATIC OIL(750J)	0511-6	COVER, HYDROSTATIC RESERVOIR	0364-4
COOLER, HYDROSTATIC OIL(850J)	0511-8	COVER, HYDROSTATIC TRACK DRIVE MOTOR	
CORDURA SLEEVE (ALL HYDRAULIC)		END CAP (750J)	0355-18
(750J)	3263-20	COVER, HYDROSTATIC TRACK DRIVE MOTOR	
CORDURA SLEEVE (ALL HYDRAULIC)		END CAP (850J)	0355-38
(850J)	3263-22	COVER, INJECTION PUMP ACCESS (750J)	0402-10
CORDURA SLEEVE (OUTSIDE DOZER)	3263-6	COVER, OIL ACCESS	1741-2
CORDURA SLEEVE (750J)		COVER, OIL ACCESS	1741-3A
C-FRAME, ALL HYDRAULIC	3263-12	COVER, PILOT CONTROL	
CORDURA SLEEVE (850J)		(ALL HYDRAULIC)	3262-14
C-FRAME, ALL HYDRAULIC	3263-14	COVER, PILOT CONTROL	
CORE CONDENSER, AIR CONDITIONING	1832-2	(OUTSIDE DOZER)	3262-12

ALPHABETICAL INDEX - CONTINUED

	PAGE		PAGE
COVER, REAR ACCESS.....	1741-2	CYLINDER COMPLETE, LIFT HYDRAULIC	
COVER, REAR ACCESS.....	1741-3A	(ALL HYDRAULIC).....	3265-14
COVER, REAR WIPER MOTOR.....	1814-8	CYLINDER GUARD (ALL HYDRAULIC).....	3265-14
COVER, RECIRCULATION AIR		CYLINDER HEAD GASKET KIT, ENGINE (850J).....	0452-4
(S/N -XXXXXX).....	1810-4	CYLINDER HEAD, ENGINE (750J).....	0409-2
COVER, RECIRCULATION AIR		CYLINDER HEAD, ENGINE (850J).....	0409-4
(S/N -XXXXXX).....	1810-6	CYLINDER LINER, ENGINE (750J).....	0403-1
COVER, RECIRCULATION AIR		CYLINDER LINER, ENGINE (850J).....	0403-2
(S/N XXXXXX-).....	1810-7A	CYLINDER LOCK, CAM	
COVER, RECIRCULATION AIR		(S/N -XXXXXX).....	1810-6
(S/N XXXXXX-).....	1810-7C	CYLINDER LOCK, CAM	
COVER, THERMOSTAT (750J).....	0418-2	(S/N XXXXXX-).....	1810-7C
COVER, THERMOSTAT HOUSING (850J).....	0418-4	CYLINDER WITH OUTSIDE DOZER, TILT.....	3265-8
COVER, TIMING GEAR.....	0402-13	CYLINDER, ANGLE GUARD.....	3265-24
COVER, TIMING GEAR (750J).....	0402-10	CYLINDER, COLD WEATHER	
COVER, TRACK CHAIN IDLER, BRACKETS AND.....	0133-12	STARTING AID FLUID/ETHER.....	0505-2
COVER, VANDAL WITH ROPS.....	1810-2	CYLINDER, HYDRAULIC TILT CYLINDER HOSES	
COVER, WATER PUMP (850J).....	0417-2	(WITH OUTSIDE DOZER).....	3265-8
CRADLE/POWER TRAIN MOUNTING, ENGINE.....	0540-2	CYLINDER, INSIDE ALL HYDRAULIC	
CRANKSHAFT.....	0401-2	PLUMBING (750J) LIFT.....	3263-16
CRANKSHAFT AND BEARINGS (750J).....	0401-1	CYLINDER, INSIDE ALL HYDRAULIC	
CROSSBAR AND COMPONENT PARTS, PINNED.....	0135-2	PLUMBING (850J) LIFT.....	3263-18
CROSSBAR FIELD KITS FOR ALL HYDRAULIC		CYLINDER, REAR STORAGE COMPARTMENT (TOOL	
DOZERS, PIVOT SHAFT SPACERS.....	0135-4	BOX).....	2005-2
CROSSBAR PIN.....	0135-2	CYLINDER, ROPS/CAB TILT.....	1810-16
CROSSBAR REMOTE LUBE HOSE.....	0135-2	CYLINDER, ROPS/CAB TILT.....	1810-18
CROSSBAR REMOTE LUBE PLATE.....	0131-2	CYLINDER, BLADE ANGLE (ALL HYDRAULIC).....	3265-18
CUP HOLDER.....	1810-2	CYLINDER, LIFT AND COMPONENT PARTS	
CUP HOLDER		(ALL HYDRAULIC)(850J).....	3265-22
(S/N -XXXXXX).....	1810-6		
CUP HOLDER			
(S/N XXXXXX-).....	1810-7C		
CUPPED END BIT, SEMI-U BLADE.....	3201-6		
CUPPED END BIT, STRAIGHT BLADE.....	3201-8		
CUPPED END BITS FOR ALL HYDRAULIC(PAT)			
BLADES.....	3201-4		
CUTTING EDGE, BLADE.....	3201-2		
CUTTING EDGE, BLADE.....	3201-4		
CUTTING EDGE, SEMI-U BLADE.....	3201-6		
CUTTING EDGE, STRAIGHT BLADE.....	3201-8		
CYLINDER AND COMPONENT PARTS, LIFT			
(ALL HYDRAULIC) (750J).....	3265-20		
CYLINDER AND COMPONENT PARTS, LIFT			
(OUTSIDE DOZER).....	3265-4		
CYLINDER AND COMPONENT PARTS, TILT			
(OUTSIDE DOZER)(750J).....	3265-10		
CYLINDER AND COMPONENT PARTS, TILT			
(OUTSIDE DOZER)(850J).....	3265-12		
CYLINDER AND COMPONENTS, RIPPER.....	4201-4		
CYLINDER BLOCK FITTINGS, ENGINE (850J).....	0404-4		
CYLINDER BLOCK, ENGINE (750J).....	0404-2		
CYLINDER BLOCK, HYDROSTATIC MOTOR			
(750J).....	0355-16		
CYLINDER BLOCK, HYDROSTATIC MOTOR			
(850J).....	0355-36		
CYLINDER BLOCK, HYDROSTATIC PUMP			
(750J).....	0355-12		
CYLINDER BLOCK, HYDROSTATIC PUMP			
(850J).....	0355-32		
CYLINDER COMPLETE AND COMPONENT PARTS,			
BLADE TILT (ALL HYDRAULIC).....	3265-16		
CYLINDER COMPLETE, ANGLE HYDRAULIC			
(ALL HYDRAULIC).....	3265-14		
CYLINDER COMPLETE, LIFT (OUTSIDE DOZER)			
(750J).....	3265-2		
CYLINDER COMPLETE, LIFT (OUTSIDE DOZER)			
(850J).....	3265-6		

D

DAMPER, CRANKSHAFT TORSIONAL (750J).....	0429-1
DAMPER, CRANKSHAFT TORSIONAL (850J).....	0429-2
DASH AND MONITOR.....	1676-8
DASH PANEL, LOWER.....	1810-2
DASH PANEL, LOWER	
(S/N -XXXXXX).....	1810-6
DASH PANEL, LOWER	
(S/N XXXXXX-).....	1810-7C
DECAL (LABEL) 12 VOLT.....	2006-2
DECAL/LABEL, BIG BLACK AND WHITE LEAPING	
DEERE DECAL ON SIDE OF DOORS.....	1322-2
DECAL/LABEL, SMALL LEAPING DEERE DECAL	
CENTERED ABOVE GRILL ON FRONT OF MACH.....	1322-2
DECAL, AIR CLEANER.....	1322-2
DECAL, HEATER AND FAN CONTROL	
(S/N -XXXXXX).....	1810-4
DECAL, HEATER AND FAN CONTROL	
(S/N -XXXXXX).....	1810-6
DECAL, HEATER AND FAN CONTROL	
(S/N XXXXXX-).....	1810-7A
DECAL, HEATER AND FAN CONTROL	
(S/N XXXXXX-).....	1810-7C
DECALS (FRENCH).....	1322-6
DECALS (SPANISH).....	1322-4
DECALS AND LABELS (ENGLISH).....	1322-2
DECCELERATOR/BRAKE PEDAL.....	0515-4
DECCELERATOR/BRAKE SENSOR, ROTARY.....	0515-4
DECCELERATOR/BRAKE SHAFT.....	0515-4
DECCELERATOR/BRAKE SUPPORT.....	0515-4
DECORATIVE GREY CIRCLE LABEL.....	1810-2
DEFROST LOUVERS	
(S/N -XXXXXX).....	1810-4
DEFROST LOUVERS	
(S/N -XXXXXX).....	1810-6

ALPHABETICAL INDEX - CONTINUED

	PAGE		PAGE
DEFROST LOUVERS (S/N XXXXXX-)	1810-7A	DRAIN HOSE, ENVIRONMENTAL HYDROSTATIC/ HYDRAULIC TANK/RESERVOIR	2163-10
DEFROST LOUVERS (S/N XXXXXX-)	1810-7C	DRAIN PAN FOAM, UPPER HEATER	1831-8
DESIGNATION LABEL, HYDRAULIC AND HYDROSTATIC OIL TANK 10W30	1322-2	DRAIN VALVE CAB HEATER PLUMBING	1831-6
DIAGNOSTIC COUPLING, FUEL (850J).....	0420-8	DRAIN VALVE KIT, FINAL FUEL FILTER (750J)	0420-4
DIAGNOSTIC HOSES AND LABEL, HYDRAULIC VALVE	2163-12	DRAIN VALVE KIT, PRIMARY FUEL FILTER (750J)	0420-2
DIAGNOSTIC PLUMBING, HYDROSTATIC/ TRANSMISSION	0363-4	DRAIN VALVE, ENGINE COOLANT (750J).....	0404-2
DIAGNOSTIC PLUMBING, HYDROSTATIC/ TRANSMISSION PRESSURE SENSOR WITH.....	0363-4	DRAIN VALVE, ENGINE COOLANT (850J).....	0404-4
DIAGNOSTIC RECEPTACLE, HYDROSTATIC CONTROL VALVE	0362-2	DRAIN VALVE, ENGINE OIL (850J)	0407-6
DIAGNOSTIC RECEPTACLE, HYDROSTATIC CONTROL VALVE	0362-4	DRAIN VALVE, ENGINE OIL PAN (750J)	0407-4
DIAGNOSTIC RECEPTACLE, PILOT CONTROLS (ALL HYDRAULIC)	3262-14	DRAIN VALVE, HYDRAULIC, HYDROSTATIC TANK /RESERVOIR AND FUEL TANK	2163-10
DIAGNOSTIC RECEPTACLE, PILOT CONTROLS (OUTSIDE DOZER)	3262-12	DRAIN VALVE, OIL PAN (750J)	0407-4
DIPSTICK, ENGINE OIL (750J).....	0407-2	DRAIN VALVE, WATER PUMP (850J)	0417-2
DIPSTICK, ENGINE OIL (850J).....	0407-3	DRAWBAR (RETRIEVAL HITCH)	1511-4
DISCONNECT BATTERY SWITCH	1671-2	DRAWBAR PIN (EXTENDED DRAWBAR).....	1511-2
DISCONNECT LABEL, BATTERY	1671-2	DRAWBAR, EXTENDED	1511-2
DISPLACEMENT CONTROL LINKAGE, ELECTRONIC HYDROSTATIC DISPLACEMENT CONTROL VALVE	0355-14	DRIVE MOTORS, HYDROSTATIC TRACK (750CJ/850J).....	0355-21A
DISPLACEMENT CONTROL LINKAGE, ELECTRONIC HYDROSTATIC DISPLACEMENT CONTROL VALVE	0355-34	DRIVE SHAFT SEALS, HYDROSTATIC PUMP (750J)	0355-6
DISPLACEMENT CONTROL VALVE, ELECTRONIC (750J)	0355-20	DRIVE SHAFT SEALS, HYDROSTATIC PUMP (850J)	0355-26
DISPLACEMENT CONTROL VALVE, ELECTRONIC (850J)	0355-40	DRIVE SHAFT, UNIVERSAL FINAL	0201-2
DISPLACEMENT CONTROL VALVE, HYDROSTATIC PUMP VALVE (750J).....	0355-14	DRIVE SHAFT, UNIVERSAL FINAL (CONTINUED)	0201-4
DISPLACEMENT CONTROL VALVE, HYDROSTATIC PUMP VALVE (850J).....	0355-34	DRIVE SHAFT, UNIVERSAL FINAL (CONTINUED)	0201-6
DOME LIGHT AND BULB (S/N -XXXXXX)	1810-6	DRIVE SPROCKET GUARD, TRACK	0131-6
DOME LIGHT AND BULB (S/N XXXXXX-)	1810-7C	DRIVE SPROCKET, TRACK CHAIN.....	0132-16
DOOR BUMPER	1813-4	DRIVE SPROCKET, TRACK CHAIN 850J RECESSED WITH WASTE HANDLER.....	0132-16
DOOR FRAME AND GLASS, CAB	1813-2	DRIVES SEAL GUARDS, FINAL	0242-2
DOOR HOLD OPEN, CAB	1813-4	DRIVES, FINAL	0201-2
DOOR LATCH COVER, CAB	1813-2	DRIVES, FINAL (CONTINUED)	0201-4
DOOR LATCH LEVER	1813-2	DRIVES, FINAL (CONTINUED)	0201-6
DOOR LATCH, CAB	1813-2	DUCTWORK FOAM, AIR	1810-4
DOOR OUTER HANDLE	1813-2	DUCTWORK FOAM, AIR (S/N XXXXXX-)	1810-7A
DOOR, GLOVE BOX (S/N -XXXXXX)	1810-6	DUST COVER, PILOT CONTROL (ALL HYDRAULIC)	3262-14
DOOR, GLOVE BOX (S/N XXXXXX-)	1810-7C	DUST COVER, PILOT CONTROL (OUTSIDE DOZER).....	3262-12
DOOR, GLOVE BOX AND PANEL SEAL	1810-2	DUST UNLOADER VALVE(850J), AIR CLEANER	0521-6
DOOR, HOLD OPEN LATCH CAB	1813-4	DUST UNLOADER VALVE, AIR CLEANER (750J)	0521-2
DOOR, HOOD SERVICE (750J).....	1911-2		
DOOR, HOOD SERVICE (850J).....	1911-4	E	
DOOR, HOOD SERVICE (850J) (SN XXXXXX-)	1911-8	ECU	0575-2
DOOR, HYDRAULIC RESERVOIR	2164-2	ECU (850J)	0475-2
DOOR, HYDROSTATIC RESERVOIR.....	0364-4	EDGE GUARD MOULDING (OUTSIDE DOZER)	3263-6
DOORS, CAB AND LATCHES	1813-2	EDGE GUARD MOULDING (OUTSIDE DOZER)	3263-20
DOUBLE/SINGLE FLANGED TRACK ROLLER AND COMPONENT PARTS (850J).....	0133-4	EDGE GUARD MOULDING (OUTSIDE DOZER)	3263-22
DOZER BLADE TILT CYLINDER, GUARDS AND HOSES WITH OUTSIDE DOZER	3265-8	EDGE, BLADE CUTTING	3201-2
DRAIN COCK RADIATOR(750J)	0511-6	EDGE, BLADE CUTTING	3201-4
DRAIN COCK RADIATOR(850J)	0511-8	EJECTOR, AIR PRE-CLEANER ROTARY	0522-2
		ELBOW FITTING, ENGINE VENTILATING SYSTEM (750J)	0408-2
		ELBOW FITTING, ENGINE VENTILATING SYSTEM (850J)	0402-8
		ELECTRICAL CENTER COVER PLATE, VEHICLE	1674-8
		ELECTRICAL CENTER RELAYS, VEHICLE	1674-8

