

**700J CRAWLER DOZER
(S.N. -139435)**



JOHN DEERE

PARTS CATALOG

**700J CRAWLER DOZER
(S.N. -139435)**

PC9473 (Apr-07) English

Worldwide Construction and Forestry Division

Worldwide Edition
Litho in U.S.A. (Revised)
COPYRIGHT © 2007
DEERE & COMPANY
Moline, Illinois
All rights reserved

INTRODUCTION AND CUSTOMER INFORMATION

T204444A -UN-25OCT04



*LEFT-HAND SIDE VIEW OF 700J CRAWLER
(MANUFACTURED 2005-)*

TO THE CUSTOMER

THE PART NUMBERS IN THIS PARTS CATALOG WERE CORRECT AT THE TIME THIS CATALOG WAS PUBLISHED. IT IS OUR POLICY TO CONSTANTLY IMPROVE OUR MACHINES AND, THEREFORE, PART NUMBERS MAY CHANGE. WHEN ORDERING PARTS, VERIFY PART NUMBERS THROUGH YOUR DEALER.

(SPECIFICATIONS AND DESIGN SUBJECT TO CHANGE WITHOUT NOTICE.)

SERIAL NUMBER LOCATION

EACH 700J CRAWLER MAY HAVE SEVEN SERIAL NUMBERS. ONE EACH FOR THE PRODUCT IDENTIFICATION NUMBER, THE ENGINE, THE HYDROSTATIC TRACK DRIVE MOTOR, THE HYDROSTATIC FRONT PUMP, THE HYDROSTATIC REAR PUMP AND THE MICRO COMPUTER.

THE PRODUCT IDENTIFICATION NUMBER IS LOCATED ON THE LEFT-HAND SIDE OF THE CRAWLER FRAME BELOW THE OPERATOR'S STATION

THE ENGINE SERIAL NUMBER PLATE IS LOCATED ON THE RIGHT-HAND SIDE OF THE CYLINDER BLOCK.

THE HYDROSTATIC TRACK DRIVE MOTOR SERIAL NUMBER PLATE IS LOCATED ON THE END CAP OF THE DRIVE MOTOR.

THE FRONT HYDROSTATIC PUMP SERIAL NUMBER PLATE IS LOCATED ON THE PUMP HOUSING.

THE REAR HYDROSTATIC PUMP SERIAL NUMBER PLATE IS LOCATED ON THE PUMP HOUSING.

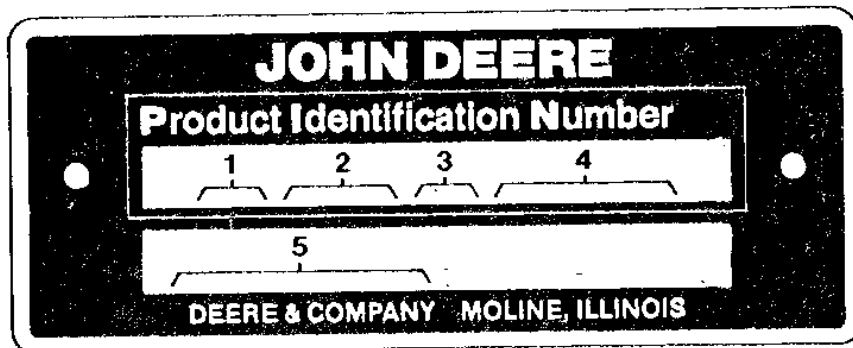
THE MICRO-COMPUTER SERIAL NUMBER PLATE IS LOCATED ON THE BOTTOM OF THE COMPUTER.

LEFT SIDE AND RIGHT SIDE, FRONT AND REAR OF THE CRAWLER ARE VIEWED BY FACING IN THE DIRECTION OF THE CRAWLER FORWARD TRAVEL.

WHENEVER SERIAL NUMBERS ARE REQUIRED ON WARRANTY CLAIMS OR CORRESPONDENCE PERTAINING TO THIS PRODUCT, IT IS EXTREMELY IMPORTANT THAT ALL CHARACTERS BE FURNISHED. THIS POINT CANNOT BE OVEREMPHASIZED.

PRODUCT IDENTIFICATION NUMBER

TP16004 -UN-01JAN94



TP16004

1. DESIGNATES CRAWLER MANUFACTURER
2. DESIGNATES CRAWLER MODEL
3. DESIGNATES CRAWLER CONFIGURATION
4. DESIGNATES CRAWLER SERIAL NUMBER
5. DESIGNATES UNIT TYPE

TO - JOHN DEERE DUBUQUE WORKS
700J
D - ANGLE BULLDOZER
123456
CRAWLER BULLDOZER

0001-3

700J CRAWLER DOZER (S.N. -139435)

ENGINE SERIAL NUMBER PLATE

RGP3513 -UN-01JAN94



RGP3513

FIRST LINE

PE - JOHN DEERE TORREON ENGINE WORKS
6
068 (6.8 LITERS)
H (DEISEL WITH AIR TO AIR TURBOCHARGER)
T - JOHN DEERE DUBUQUE WORKS
XXXXXX

SECOND LINE

PE6068TT060

DEFINES

DESIGNATES ENGINE MANUFACTURER
DESIGNATES NUMBER OF CYLINDERS
DESIGNATES LITER DISPLACEMENT
DESIGNATES TYPE OF AIR INTAKE SYSTEM
DESIGNATES USER FACTORY
DESIGNATES ENGINE SERIAL NUMBER

APPLICATION

700J CRAWLER DOZER

SERIAL NUMBER LISTING INFORMATION

SERIAL NUMBER INFORMATION IS LISTED TO SHOW ON WHICH MACHINES EACH PART CAN BE USED; FOR EXAMPLE:

- THE PART CAN BE USED ON ALL MACHINES.
- 000000 - THE PART CAN BE USED ON MACHINES BEGINNING WITH THE SERIAL NUMBER LISTED.
- 000000 THE PART CAN BE USED ON MACHINES UP TO AND INCLUDING THE SERIAL NUMBER LISTED.
- 000000 - 000000 THE PART CAN BE USED ON MACHINES BETWEEN AND INCLUDING THE SERIAL NUMBERS LISTED.

WHEN XXXXXX'S ARE LISTED IN PLACE OF A SERIAL NUMBER, A SERIAL NUMBER CHANGE WAS MADE, BUT THE EXACT SERIAL NUMBER WAS NOT AVAILABLE WHEN THE CATALOG WAS PRODUCED.

DIRECTION ARROW

ARROWS ARE USED WITH ILLUSTRATIONS TO INDICATE THE FRONT OF THE UNIT. "RIGHT-HAND" AND "RIGHT-HAND" SIDES ARE DETERMINED BY FACING IN THE DIRECTION OF MACHINE FORWARD TRAVEL.

EXCEPTION: FOR ALL BACKHOE PARTS, "RIGHT-HAND" AND "LEFT-HAND" SIDES, "FRONT" AND "REAR" ARE DETERMINED WHEN SEATED FOR BACKHOE OPERATION.

BOX-ENCLOSED ILLUSTRATIONS

A KEY NUMBER, SHOWN IN THE PARTS LIST, IS ASSIGNED TO A BOX ENCLOSING ALL PARTS SOLD AS A SERVICE ASSEMBLY.

COMPLETE GOODS LISTINGS

COMPLETE GOODS ARE LISTED IN BOLD FACE TYPE. ORDER SEPARATELY. DO NOT INCLUDE ON REPLACEMENT PARTS ORDER.

SI UNITS OF MEASURE

METRIC DIMENSIONS ARE GIVEN, WHERE APPLICABLE, THROUGHOUT THIS PARTS CATALOG.

CHANGE INDICATOR LINE

CHANGES AFFECTING THE ORDERING OF PARTS ARE IDENTIFIED BY VERTICAL LINES MARKED IN THE LEFT-HAND MARGIN OF REVISED PARTS LISTING IMAGES. A LINE IS ALSO AT THE LEFT-HAND EDGE OF THE SAME PART NUMBER IN THE NUMERICAL INDEX TO SHOW THE LOCATION OF REVISED INFORMATION.

0001-5

700J CRAWLER DOZER (S.N. -139435)

ALPHABETICAL INDEX

	PAGE		PAGE
A			
A/C COMPRESSOR HARDWARE KIT	1832-10	AIR CONDITIONING PLUMBING GUARD (S/N -XXXXXX)	1810-6
A/C COMPRESSOR SHAFT SEAL KIT	1832-9	AIR CONDITIONING PLUMBING GUARD (S/N XXXXXX-)	1810-5A
A/C KIT, COMPRESSOR HARDWARE	1832-10	AIR CONDITIONING RECEIVER DRYER	1832-2
ACCESS COVER, MAIN FRAME, REAR	1741-2	AIR CONDITIONING REFRIGERANT LINE	1832-2
ACCESS COVER, OIL, MAIN FRAME	1741-2	AIR CONTROL VALVE (AIR SUSPENSION SEAT)	1821-26
ACCESSORY, POWER	2006-2	AIR COVER, RECIRCULATION (S/N -XXXXXX)	1810-4
ACTUATOR BEARING KIT, SEAT SUSPENSION (DELUXE)	1821-20	AIR COVER, RECIRCULATION (S/N XXXXXX-)	1810-5A
ADAPTER, ENGINE OIL COOLER	0419-2	AIR DUCTWORK FOAM (S/N -XXXXXX)	1810-6
ADAPTER, HYDROSTATIC FILTER	0355-2	AIR FILTER COVER PLATE (S/N -XXXXXX)	1810-4
ADAPTER, SPLINE, STANDARD HYDRAULIC PUMP	2161-2	AIR FILTER COVER PLATE (S/N XXXXXX-)	1810-5A
ADAPTER, TRACK ADJUSTER	0133-6	AIR FILTER, FRESH AIR, CAB (UPPER)	1831-8
ADJUSTER IDLER YOKE, TRACK CHAIN TENSION	0133-8	AIR INTAKE (VSN 920839-) (PE6068TT060)	0414-1
ADJUSTER PISTON, TRACK CHAIN TENSION	0133-8	AIR INTAKE HOSE	0521-2
ADJUSTER SEALS, TRACK CHAIN TENSION	0133-8	AIR INTAKE MANIFOLD (VSN 920839-) (PE6068TT060)	0414-1
ADJUSTER, TRACK	0133-6	AIR INTAKE SYSTEM (VSN 920839-) (PE6068TT060)	0414-1
ADJUSTER, TRACK CHAIN TENSION	0133-6	AIR LINES (AIR SUSPENSION SEAT)	1821-26
ADJUSTMENT KNOB, WEIGHT/HEIGHT, SEAT SUSPENSION	1821-6	AIR SUSPENSION SEAT WIRING HARNESS FROM SEAT COMPRESSOR HARNESS TO FUSE BOX	1821-24
AIR CLEANER CLEAN OUT VALVE	0521-2	AIR SUSPENSION SEAT WIRING HARNESS FROM SEAT COMPRESSOR HARNESS TO FUSE BOX	1821-26
AIR CLEANER COVER	0521-2	ALARM, BACKUP	2004-4
AIR CLEANER FILTER ELEMENT WITH TURBOCHARGER	0521-2	ALARM, 12 VOLT WITH SHUTTER	1676-2
AIR CLEANER RAINCAP WITH CLAMP	0521-2	ALTERNATOR (24 VOLT/55 AMP)	1672-2
AIR CLEANER STACK	0521-2	ALTERNATOR ADJUSTING STRAP	0423-2
AIR CLEANER VACUUM SWITCH SENSOR	0521-2	ALTERNATOR BRACKET	0423-2
AIR CLEANER WITH TURBOCHARGER	0521-2	ALTERNATOR FAN	1672-2
AIR COMPRESSOR, 24 VOLT (AIR SUSPENSION SEAT)	1821-24	ALTERNATOR PULLEY	1672-2
AIR CONDITIONER FIELD KIT	1832-2	ALTERNATOR SUPPORT	0423-2
AIR CONDITIONER REAR COVER PLATE (S/N -XXXXXX)	1810-4	ANGLE CYLINDER COMPONENTS	3265-2
AIR CONDITIONER REAR COVER PLATE (S/N XXXXXX-)	1810-5A	ANGLE CYLINDER HEAD END PIN	3243-2
AIR CONDITIONER SIDE COVER PLATE (S/N -XXXXXX)	1810-4	ANGLE CYLINDER HYDRAULIC HOSES	3263-6
AIR CONDITIONER SIDE COVER PLATE (S/N XXXXXX-)	1810-5A	ANGLE CYLINDER PACKING KITS	3265-2
AIR CONDITIONING CHARGE FITTING	1832-4	ANGLE CYLINDER ROD END PIN	3201-2
AIR CONDITIONING COMPRESSOR	1832-6	ANGLE CYLINDER ROD SEAL KIT	3265-2
AIR CONDITIONING COMPRESSOR	1832-8	ANGLE CYLINDER SEAL KITS	3265-2
AIR CONDITIONING COMPRESSOR BELT	1832-6	ANGLE HOSE GUARD	3263-8
AIR CONDITIONING COMPRESSOR BRACKETS	1832-6	ANGLE HOSE, HEAD END	3263-8
AIR CONDITIONING COMPRESSOR MANIFOLD SEAL	1832-8	ANGLE HOSE, ROD END	3263-8
AIR CONDITIONING COMPRESSOR MANIFOLD AND DUST COVER	1832-8	ANGLE HYDRAULIC CYLINDER	3265-2
AIR CONDITIONING COMPRESSOR PULLEY	1832-6	ANGLE HYDRAULIC HOSES	3263-6
AIR CONDITIONING COMPRESSOR STATOR	1832-8	ANGLE PLUMBING, DOZER	3263-6
AIR CONDITIONING CONDENSER (24 VOLT)	1832-2	ARM WITH SHAFT, HYDRAULIC CONTROL	3215-2
AIR CONDITIONING CONDENSER FAN	1832-2	ARM, ENGINE ROCKER	0402-2
AIR CONDITIONING CONDENSER WIRING HARNESS	1832-2	ARM, FRONT AND SIDE WINDOW WIPER	1814-6
AIR CONDITIONING CORE, CONDENSER	1832-2	ARMREST (DELUXE/AIR SUSPENSION)	1821-14
AIR CONDITIONING FIELD KIT (HIGH AND LOW PRESSURE REFRIGERANT HOSES)	1832-4	ARMREST PLATE (DELUXE/AIR SUSPENSION)	1821-14
AIR CONDITIONING HOUSING KIT	1832-2	ARMREST, STANDARD SEAT	1821-4
AIR CONDITIONING LOUVERS (S/N -XXXXXX)	1810-6	ATTACHMENTS MIRROR, REAR	1810-14
AIR CONDITIONING LOW PRESSURE SWITCH	1832-2	AUXILIARY DRIVE COVER	0404-10
AIR CONDITIONING PLUMBING (HIGH AND LOW PRESSURE REFRIGERANT HOSES)	1832-4	AUXILIARY VALVE	3262-2
AIR CONDITIONING PLUMBING GUARD (S/N -XXXXXX)	1810-4	AUXILIARY VALVE BELLCRANK	3215-2
		AUXILIARY VALVE CIRCUIT RELIEF VALVE (FIFTH FUNCTION)	3262-6
		AUXILIARY VALVE CIRCUIT RELIEF VALVE (FOURTH FUNCTION)	3262-4

ALPHABETICAL INDEX - CONTINUED

	PAGE		PAGE
AUXILIARY VALVE WITH FLOAT (FIFTH FUNCTION)	3262-6	BLADE, HYDRAULIC SIX WAY LABEL (S/N XXXXXX-)	1810-5A
AUXILIARY VALVE WITH FLOAT (FOURTH FUNCTION)	3262-4	BLADE, REAR WINDOW WIPER	1814-8
AUXILIARY VALVE WITH LINKAGE (FIFTH FUNCTION)	3262-6	BLADE, 120 INCH (LT, XLT)	3201-2
AUXILIARY VALVE WITH LINKAGE (FOURTH FUNCTION)	3262-4	BLADE, 132 INCH (LGP)	3201-2
AXIAL PISTON HYDROSTATIC MOTOR	0355-16	BLOCK ASSEMBLY, ENGINE SHORT	0404-6
		BLOCK, ENGINE CYLINDER	0404-2
		BLOWER FAN HEATER (UPPER)	1831-8
		BLOWER MOTOR BULKHEAD, UNDERSEAT HEATER, ROPS AND CAB	1831-2
		BLOWER WITH MOTOR, UNDER SEAT HEATER, ROPS AND CAB	1831-2
		BOLTS, BLADE	3201-2
		BOOT CLIP KIT (AIR SUSPENSION SEAT)	1821-24
		BOOT KIT (AIR SUSPENSION SEAT)	1821-24
		BOOT KIT (DELUXE SEAT)	1821-18
		BOOT, HYDRAULIC LINKAGE	3215-2
		BOOT, SINGLE LEVER CONTROL	0315-2
		BOOT, STANDARD SEAT SUSPENSION	1821-6
		BOOT, TRANSMISSION CONTROL LEVER	0315-2
		BORE SEAL KIT, LIFT CYLINDER	3265-4
		BORE SEAL KIT, TILT CYLINDER	3265-6
		BOX AND CUP TRAY, LUNCH	1810-12
		BOX, TOOL	1810-12
		BRACKET, ALTERNATOR	0423-2
		BRACKET, CAB HI-INTENSITY LIGHTS	1673-6
		BRACKET, DIPSTICK TUBE SUPPORT	0407-2
		BRACKET, FINAL FUEL FILTER	0420-4
		BRACKET, FUEL LINE	0420-6
		BRACKET, HYDRAULIC FILTER	2164-4
		BRACKET, HYDROSTATIC REAR PUMP LIFTING LUG	0355-8
		BRACKET, LIGHT	1673-4
		BRACKET, PARK LOCK SUPPORT	1115-4
		BRACKET, POWER TRAIN	0540-2
		BRACKET, PRIMARY FUEL FILTER	0420-2
		BRACKET, RADIO MOUNTING	2001-2
		BRACKET, REAR MIRROR	1810-14
		BRACKET, SEAT TILTING, CAB	1811-4
		BRACKET, SEAT TILTING, ROPS	1811-2
		BRACKET, SINGLE LEVER CONTROL	0315-2
		BRACKET, TENSIONER	0429-2
		BRACKET, TRANSMISSION CONTROL LEVER	0315-2
		BRACKETS WITH IDLER	0133-8
		BRACKETS, AIR CONDITIONING COMPRESSOR	1832-6
		BRAKE	1115-2
		BRAKE HOSES	0363-2
		BRAKE PEDAL	1115-2
		BRAKE PEDAL AND MOUNTING	1115-2
		BRAKE SUPPORT	1115-2
		BRAKE VALVE	1062-2
		BRAKE VALVE AND FITTINGS	1062-2
		BRAKE VALVE HOSES	0363-2
		BRAKE VALVE KIT	1062-2
		BRAKE, FINAL DRIVES	0201-2
		BRAKE, FINAL DRIVES	0201-4
		BREAKER, HI-INTENSITY LIGHT CIRCUIT, CAB	1673-6
		BREAKER, HI-INTENSITY LIGHT CIRCUIT, ROPS	1673-4
		BULB, CAB HI-INTENSITY LIGHTS	1673-6
		BULB, DOME LIGHT	1810-6
		BULB, DOMELIGHT AND LIGHT	1810-5A
		BULB, ROPS HI-INTENSITY LIGHTS	1673-4
		BULKHEAD PLATE, TILT CYLINDER PLUMBING	3263-4
		BULKHEAD, BLOWER MOTOR, ROPS AND CAB UNDER SEAT HEATER	1831-2
B			
BACK, SEAT PAD	1821-2		
BACKING PLATE, UNDER SEAT, CAB ONLY	1831-2		
BACKUP ALARM	2004-4		
BALL, C-FRAME PIVOT	3243-2		
BAR, HOOD SUPPORT	1911-4		
BARREL, HYDRAULIC ANGLE CYLINDER	3265-2		
BARREL, HYDRAULIC LIFT CYLINDER	3265-4		
BARREL, HYDRAULIC TILT CYLINDER	3265-6		
BASE PLATE, SEAT (MOUNTING BRACKET/RISER)	1821-4		
BASE WITH HEATER, ROPS AND CAB SEAT	1831-2		
BASE, CAB SEAT	1811-4		
BASE, ROPS SEAT	1811-2		
BATTERIES AND CABLES	1671-2		
BATTERY CABLE, MASTER DISCONNECT SWITCH	1671-2		
BATTERY CABLES, NEGATIVE AND POSITIVE, HEAVY DUTY	1671-2		
BATTERY COVER, HEAVY DUTY	1671-2		
BATTERY GROUND STRAP	1671-2		
BATTERY HOLDDOWN PLATE, HEAVY DUTY	1671-2		
BATTERY MASTER DISCONNECT SWITCH	1671-2		
BATTERY, HEAVY DUTY	1671-2		
BEARING CAP, MAIN AND THRUST	0404-2		
BEARING KIT, ACTUATOR, SEAT SUSPENSION (DELUXE)	1821-20		
BEARING ROLLER KIT (AIR SUSPENSION SEAT)	1821-24		
BEARING, ENGINE MAIN AND THRUST	0401-1		
BEARING, HYDROSTATIC PUMP	0355-12		
BEARING, HYDROSTATIC PUMP SHAFT ROLLER	0355-10		
BEARINGS, CARRIER ROLLER	0133-4		
BEARINGS, CONNECTING ROD (PE6068TT060) (VSN 920839-)	0403-1		
BELLCRANK, AUXILIARY VALVE	3215-2		
BELLCRANK, PARK LOCK	1115-4		
BELT IDLER TENSIONER	0429-2		
BELT, AIR CONDITIONING COMPRESSOR	1832-6		
BELT, DRIVE (WITHOUT AIR CONDITIONING)	0512-2		
BELT, FAN DRIVE	0429-2		
BELT, FAN POLY RIB (WITHOUT AIR CONDITIONING)	0512-2		
BELT, TWO INCH, SEAT	1821-2		
BIT, BLADE END	3201-2		
BLADE BOLTS	3201-2		
BLADE C-FRAME SOCKET AND SHIMS	3201-2		
BLADE CUPPED END BITS	3201-2		
BLADE CUTTING EDGE	3201-2		
BLADE END BIT	3201-2		
BLADE HYDRAULIC PLUMBING	3263-8		
BLADE PINS	3201-2		
BLADE TORQUE AND SHIM DECAL (ENGLISH, FRENCH, SPANISH)	3201-2		
BLADE, FRONT AND SIDE WINDOW WIPERS	1814-6		
BLADE, HYDRAULIC SIX WAY LABEL (S/N -XXXXXX)	1810-4		

ALPHABETICAL INDEX - CONTINUED

	PAGE		PAGE
BUMPER KIT (AIR SUSPENSION SEAT)	1821-26	CAB PARTS (S/N XXXXXX-)	1810-5A
BUMPER, DOOR	1813-4	CAB PLATE	1810-8
BUSHING, CAMSHAFT	0404-2	CAB SEAT BASE	1811-4
BUSHING, CROSSBAR	1743-2	CAB STEP TREAD PLATES	1822-2
BUSHINGS, C-FRAME	3243-2	CAB STEPS	1822-2
BYPASS VALVE, HYDROSTATIC OIL COOLER	0363-10	CAB STRUCTURE WELDMENT CONVENIENCE ASSEMBLY	1811-4
C			
C-FLANGE ADAPTER	0355-2	CAB WINDOWS	1814-2
C-FRAME BUSHINGS	3243-2	CAB WIRING HARNESS	1674-4
C-FRAME HOSE GUARD	1921-4	CABLE, MASTER DISCONNECT SWITCH	1671-2
C-FRAME LUBRICATION CROSSBAR HOSE	1743-6	CABLE, NEGATIVE, HEAVY DUTY BATTERY	1671-2
C-FRAME LUBRICATION HOSES	3243-2	CABLE, POSITIVE, HEAVY DUTY BATTERY	1671-2
C-FRAME PINS	3243-2	CAM KIT, SEAT SUSPENSION (DELUXE)	1821-20
C-FRAME PIVOT BALL	3243-2	CAMSHAFT	0402-1
C-FRAME SOCKET AND SHIMS, BLADE	3201-2	CAN TERMINATION RESISTOR	1674-4
C-FRAME, LOW GROUND PRESSURE	3243-2	CAN TERMINATION RESISTOR	1674-8
C-FRAME, STANDARD	3243-2	CANOPY CORNER COVERS	1927-2
CAB AND ROPS SEAT BASE WITH HEATER UNDER SEAT	1831-2	CAP, AIR CLEANER WITH CLAMP	0521-2
CAB AND ROPS UNDER SEAT HEATER	1831-2	CAP, FUEL TANK FILLER	0564-2
CAB COMPONENTS		CAP, HYDROSTATIC PUMP END	0355-2
(S/N -XXXXXX)	1810-4	CAP, MAIN AND THRUST BEARING	0404-2
CAB COMPONENTS		CAP, PIVOT SHAFT	1743-4
(S/N XXXXXX-)	1810-5A	CAP, RADIATOR	0511-2
CAB CORNER COVERS	1927-4	CAP, WIPER WASHER RESERVOIR	1814-4
CAB DOOR	1813-2	CAP, WIPER WASHER TANK	1814-4
CAB DOOR FRAME AND GLASS	1813-2	CAP,ENGINE OIL FILLER TUBE	0407-2
CAB DOOR HOLD OPEN	1813-4	CARRIER ROLLER BEARINGS	0133-4
CAB DOOR HOLD OPEN HANDLE GRIP	1813-4	CARRIER ROLLER COVER	0133-4
CAB DOOR HOLD OPEN LATCH	1813-4	CARRIER ROLLER SUPPORT	0133-4
CAB DOOR LATCH	1813-2	CARRIER ROLLER WITH COMPONENT PARTS	0133-4
CAB DOOR LATCH COVER	1813-2	CAUTION AND START LABEL (S/N -XXXXXX)	1810-4
CAB DOOR LATCH, STRIKER AND GUARD	1813-2	CAUTION AND START LABEL (S/N XXXXXX-)	1810-5A
CAB DOORS AND LATCHES	1813-2	CENTER GUARD, MAIN FRAME	1741-2
CAB FOOTREST	1810-8	CHAIN IDLER, TRACK	0133-8
CAB FRAME STRUCTURE CONVENIENCE ASSEMBLY	1811-4	CHAIN TENSION ADJUSTER IDLER YOKE, TRACK	0133-8
CAB FRESH AIR FILTER (UPPER)	1831-8	CHAIN TENSION ADJUSTER PISTON, TRACK	0133-8
CAB FUSE BLOCK LABEL (S/N -XXXXXX)	1810-4	CHAIN TENSION ADJUSTER SEALS, TRACK	0133-8
CAB FUSE BLOCK LABEL (S/N XXXXXX-)	1810-5A	CHAIN, SPROCKET DRIVE	0132-6
CAB FUSES AND RELAYS	1674-10	CHAIN, TRACK, LUBED 40 LINK WITH 16 INCH SHOES	0132-2
CAB FUSES, CIRCUIT BREAKER, AND ELECTRICAL RELAYS	1674-10	CHAIN, TRACK, LUBED 40 LINK WITH 16 INCH SHOES (CONTINUED)	0132-4
CAB HEADLINER COMPONENTS (S/N -XXXXXX)	1810-6	CHAIN, TRACK, LUBED 40 LINK WITHOUT SHOES	0132-2
CAB HEADLINER, FRONT (WITH LOUVERS) (S/N -XXXXXX)	1810-6	CHAIN, TRACK, LUBED 40 LINK WITHOUT SHOES (CONTINUED)	0132-4
CAB HEADLINER, REAR (WITH LOUVERS) (S/N -XXXXXX)	1810-6	CHARGE FITTING, AIR CONDITIONING	1832-4
CAB HEATER (UPPER)	1831-8	CHARGE RELIEF POPPET, HYDROSTATIC TRACK DRIVE MOTOR END CAP	0355-20
CAB HEATER HOSE	1831-6	CHART, PERIODIC SERVICE	1322-2
CAB HEATER PLUMBING	1831-6	CHROME EXHAUST MUFFLER STACK	1911-2
CAB HEATER THERMOSTAT (UPPER)	1831-8	CIGAR LIGHTER	2006-2
CAB HI-INTENSITY LIGHTS	1673-6	CIRCUIT BREAKER, CAB HI-INTENSITY LIGHTS	1673-6
CAB HIGH-INTENSITY WORK LIGHT LABEL	1673-6	CIRCUIT BREAKER, ELECTRICAL RELAYS, AND FUSES, CAB	1674-10
CAB LOUVERS (S/N -XXXXXX)	1810-6	CIRCUIT BREAKER, ELECTRICAL RELAYS, AND FUSES, ROPS	1674-12
CAB MOUNTS AND ISOLATORS	1811-6	CIRCUIT BREAKER, LIGHT	1673-4
CAB NOISE REDUCTION FOAM	1807-4	CIRCUIT RELIEF VALVE, AUXILIARY VALVE (FIFTH FUNCTION)	3262-6
CAB NOISE REDUCTION FOAM/ISOLATOR	1807-2	CIRCUIT RELIEF VALVE, AUXILIARY VALVE (FOURTH FUNCTION)	3262-4
CAB ONLY BACKING PLATE UNDER SEAT	1831-2	CLEAN OUT COVER, HYDROSTATIC RESERVOIR	0364-4
CAB PARTS (S/N -XXXXXX)	1810-4	CLOTH HEADREST (AIR SUSPENSION)	1821-22
		CLOTH SEAT (AIR SUSPENSION)	1821-22

ALPHABETICAL INDEX - CONTINUED

	PAGE		PAGE
CLOTH SEAT (DELUXE)	1821-12	COOLER, HYDROSTATIC OIL	0511-2
CLOTH SEAT BACK (AIR SUSPENSION)	1821-22	COOLING SYSTEM SAND SHIELD	0511-4
CLOTH SEAT PAD (AIR SUSPENSION)	1821-22	CORDURA SLEEVE, BLADE CYLINDER PLUMBING	3263-8
CLUTCH, STARTING MOTOR	0422-2	CORDURA SLEEVE, TILT CYLINDER PLUMBING	3263-4
COLD WEATHER/ETHER STARTING AID	0505-2	CORE, CONDENSER, AIR CONDITIONING	1832-2
COMPONENTS, CAB		CORE, EVAPORATOR (UPPER)	1831-8
(S/N -XXXXXX)	1810-4	CORE, HEATER (UPPER)	1831-8
COMPONENTS, CAB		CORE, ROPS AND CAB UNDER SEAT HEATER	1831-2
(S/N XXXXXX-)	1810-5A	CORNER COVERS, CAB	1927-4
COMPONENTS, CAB HEADLINER		CORNER COVERS, CANOPY	1927-2
(S/N -XXXXXX)	1810-6	COUNTERWEIGHT, FRONT	1749-2
COMPONENTS, HYDRAULIC CONTROL VALVE	3262-2	COUPLER, FLYWHEEL	0325-2
COMPONENTS, ROPS	1810-2	COUPLING, HYDROSTATIC FRONT AND REAR	
COMPONENTS, STANDARD SEAT SUSPENSION	1821-6	PUMP	0355-4
COMPRESSOR BELT, AIR CONDITIONING	1832-6	COUPLING, STANDARD HYDRAULIC PUMP	2161-2
COMPRESSOR BRACKETS, AIR CONDITIONING	1832-6	COVER PLATE, FUSE, CAB	
COMPRESSOR HARDWARE KIT, A/C	1832-10	(S/N -XXXXXX)	1810-4
COMPRESSOR PULLEY, AIR CONDITIONING	1832-6	COVER PLATE, FUSE, CAB	
COMPRESSOR SHAFT SEAL KIT, A/C	1832-9	(S/N XXXXXX-)	1810-5A
COMPRESSOR, AIR CONDITIONING	1832-6	COVER PLATE, FUSE, ROPS	1810-2
COMPRESSOR, AIR CONDITIONING	1832-8	COVER PLATE, HYDROSTATIC RESERVOIR	
COMPRESSOR, 24 VOLT (AIR SUSPENSION		ACCESS	0364-4
SEAT)	1821-24	COVER PLATE, RADIATOR	1921-2
CONDENSER FAN, AIR CONDITIONING	1832-2	COVER, AIR CLEANER	0521-2
CONDENSER, AIR CONDITIONING (24 VOLT)	1832-2	COVER, AIR RECIRCULATION	
CONDENSER, AIR CONDITIONING CORE	1832-2	(S/N -XXXXXX)	1810-4
CONDITIONER, COOLANT (750J)	1369-1	COVER, AIR RECIRCULATION	
CONNECTING ROD (PE6068TT060)		(S/N XXXXXX-)	1810-5A
(VSN 920839-)	0403-1	COVER, AUXILIARY DRIVE	0404-10
CONNECTING ROD BEARINGS (PE6068TT060)		COVER, BATTERY, HEAVY DUTY	1671-2
(VSN 920839-)	0403-1	COVER, CAB DOOR LATCH	1813-2
CONTROL UNIT, ELECTRONIC ENGINE	0575-2	COVER, CARRIER ROLLER	0133-4
CONTROL HANDLE, T-BAR	3215-2	COVER, ENGINE OIL FILLER INLET	0407-1
CONTROL LEVER, TRANSMISSION, WITH SPEED		COVER, ENGINE ROCKER ARM	0402-3
IN GRIP	0315-2	COVER, FLYWHEEL	0540-2
CONTROL LINKAGE, AUXILIARY VALVE		COVER, HEATER TOP (UPPER)	1831-8
(FIFTH FUNCTION)	3262-6	COVER, HYDRAULIC RESERVOIR	2164-2
CONTROL LINKAGE, AUXILIARY VALVE		COVER, HYDROSTATIC PUMP SIDE	0355-2
(FOURTH FUNCTION)	3262-4	COVER, HYDROSTATIC RESERVOIR	0364-4
CONTROL LINKAGE, HYDRAULIC	3215-2	COVER, HYDROSTATIC TRACK DRIVE MOTOR	
CONTROL MOTOR, HYDROSTATIC TRACK DRIVE		END CAP	0355-20
MOTOR	0355-22	COVER, MAIN FRAME OIL ACCESS	1741-2
CONTROL PANEL, OVERHEAD SWITCH		COVER, MAIN FRAME, REAR ACCESS	1741-2
(S/N -XXXXXX)	1810-6	COVER, MICROPROCESSOR	0375-2
CONTROL SHAFT WITH ARM, HYDRAULIC	3215-2	COVER, PTO SHAFT	2161-4
CONTROL U-JOINT (HOUSING),HYDRAULIC	3215-2	COVER, RADIO	
CONTROL UNIT, ENGINE	0575-2	(S/N -XXXXXX)	1810-6
CONTROL VALVE TO HYDRAULIC PUMP,		COVER, REAR WIPER MOTOR	1814-8
PRESSURE HOSE	2163-4	COVER, START AID SWITCH	0505-6
CONTROL VALVE, ELECTRONIC DISPLACEMENT	0355-22	COVER, THERMOSTAT	0418-2
CONTROL VALVE, HYDRAULIC (DOES NOT		COVER, VANDAL (ROPS)	1810-2
INCLUDE HOSE ADAPTERS)	3262-2	COVER, TIMING GEAR	0402-4
CONTROL WITH SPEED IN GRIP, SINGLE LEVER	0315-2	COVERS, BOTTOM, TRANSVERSE CASE	1741-2
CONTROL, PILOT PRESSURE	0355-22	COVERS, CAB CORNER	1927-4
CONTROL, SEAT SLIDE (ALL SEATS)	1821-8	COVERS, CANOPY CORNER	1927-2
CONTROL, SEAT TILT (ALL SEATS)	1821-8	COVERS, TRACK FRAME	0133-10
CONVENIENCE ASSEMBLY, CAB	1811-4	COWL SEAL, HOOD SUPPORT	1911-4
CONVENIENCE ASSEMBLY, ROPS	1811-2	CRANKSHAFT AND BEARINGS	0401-1
CONVERTER, RADIO (24 VOLT TO 12 VOLT)	2001-2	CRANKSHAFT POSITION SENSOR	0402-4
CONVERTER, 24V TO 12V POWER (5 AMP)	2006-2	CROSSBAR	1743-2
COOLANT CONDITIONER (750J)	1369-1	CROSSBAR BUSHING	1743-2
COOLANT DRAIN VALVE, ENGINE	0404-2	CROSSBAR C-FRAME LUBRICATION HOSE	1743-6
COOLANT HEATER, ENGINE	0505-4	CROSSBAR LUBE HOSE	1743-2
COOLANT HEATER, FUEL FIRED	0505-8	CROSSBAR PIN	1743-2
COOLER BYPASS VALVE, HYDROSTATIC OIL	0363-10	CROSSBAR REMOTE LUBRICATION, C-FRAME	1743-6
COOLER, ENGINE OIL	0419-2	CROSSBAR SUPPORT, BOLT ON	0131-2
COOLER, HYDRAULIC OIL	0511-2		

ALPHABETICAL INDEX - CONTINUED

	PAGE		PAGE
CROSSBAR SUPPORT, BOLT ON (LOW GROUND PRESSURE)	0131-2	DOOR BUMPER	1813-4
CUP TRAY AND LUNCH BOX	1810-12	DOOR FRAME AND GLASS, CAB	1813-2
CUPPED END BITS FOR BLADE	3201-2	DOOR HOLD OPEN, CAB	1813-4
CUTTING EDGE, BLADE	3201-2	DOOR LATCH COVER, CAB	1813-2
CYLINDER BARREL, HYDRAULIC, ANGLE	3265-2	DOOR LATCH LEVER	1813-2
CYLINDER BARREL, HYDRAULIC, LIFT	3265-4	DOOR LATCH, CAB	1813-2
CYLINDER BARREL, HYDRAULIC, TILT	3265-6	DOOR OUTER HANDLE	1813-2
CYLINDER BLOCK, ENGINE	0404-2	DOOR, CAB	1813-2
CYLINDER BLOCK, HYDROSTATIC MOTOR	0355-18	DOOR, HOLD OPEN LATCH CAB	1813-4
CYLINDER GUARD	3265-2	DOOR, HOOD SERVICE	1911-2
CYLINDER HEAD END PIN, LIFT	3265-4	DOOR, HYDRAULIC RESERVOIR	2164-2
CYLINDER HEAD, ENGINE	0409-2	DOOR, HYDROSTATIC RESERVOIR	0364-4
CYLINDER LINER O-RING KIT (PE6068TT060) (VSN 920839-)	0403-1	DOOR, SERVICE, ENGINE SIDE SHIELD	1912-2
CYLINDER PISTON, HYDRAULIC, ANGLE	3265-2	DOORS AND LATCHES, CAB	1813-2
CYLINDER PISTON, HYDRAULIC, LIFT	3265-4	DRAIN COCK, RADIATOR	0511-2
CYLINDER PISTON, HYDRAULIC, TILT	3265-6	DRAIN HOSE, ENVIRONMENTAL, ENGINE	2163-10
CYLINDER ROD GUIDE, ANGLE	3265-2	DRAIN HOSE, FUEL FILTER	0563-2
CYLINDER ROD GUIDE, LIFT	3265-4	DRAIN HOSE, HYDROSTATIC MOTOR	0363-10
CYLINDER ROD GUIDE, TILT	3265-6	DRAIN PAN FOAM, UPPER HEATER	1831-8
CYLINDER ROD WITH END, ANGLE	3265-2	DRAIN VALVE KIT, FINAL FUEL FILTER	0420-4
CYLINDER ROD WITH END, LIFT	3265-4	DRAIN VALVE KIT, PRIMARY FUEL FILTER	0420-2
CYLINDER ROD WITH END, TILT	3265-6	DRAIN VALVE, CAB HEATER PLUMBING	1831-6
CYLINDER, ANGLE, HYDRAULIC	3265-2	DRAIN VALVE, ENGINE COOLANT	0404-2
CYLINDER, HYDROSTATIC SERVO CAN	0355-2	DRAIN VALVE, FUEL TANK	0564-2
CYLINDER, LIFT, HYDRAULIC	3265-4	DRAIN VALVE, HYDRAULIC, HYDROSTATIC AND ENGINE	2163-10
CYLINDER, STARTING AID FLUID COLD WEATHER/ETHER	0505-2	DRAWBAR PIN	1511-2
CYLINDER, TILT, HYDRAULIC	3265-6	DRAWBAR PIN, 4000S WINCH	1511-6
D			
DAMPER, CRANKSHAFT TORSIONAL	0429-1	DRAWBAR, STANDARD	1511-2
DASH AND MONITOR	1676-2	DRAWBAR, 4000S WINCH	1511-6
DASH PANEL, LOWER, CAB (S/N -XXXXXX)	1810-4	DRIVE BELT (WITHOUT AIR CONDITIONING)	0512-2
DASH PANEL, LOWER, CAB (S/N XXXXXX-)	1810-5A	DRIVE CHAIN SPROCKET	0132-6
DASH PANEL, LOWER, ROPS	1810-2	DRIVE CHAIN SPROCKET SEGMENT	0132-6
DECAL, BLADE TORQUE AND SHIM (ENGLISH, FRENCH, SPANISH)	3201-2	DRIVE SHAFT, UNIVERSAL FINAL	0201-2
DECAL, HEATER AND FAN CONTROL	1322-2	DRIVE SHAFT, UNIVERSAL FINAL	0201-4
DECAL, HEATER AND FAN CONTROL (S/N -XXXXXX)	1810-6	DRIVE THRU HYDRAULIC PUMP WITH SHAFT	2161-4
DECALS (FRENCH AND SPANISH)	1322-4	DRIVE THRU PUMP SUCTION HOSE	2163-8
DECALS AND LABELS (ENGLISH)	1322-2	DRIVE, FAN	0429-2
DECELERATOR ENGAGEMENT ROTARY SENSOR	1115-2	DRIVES, FINAL	0201-2
DEFLECTOR GRID, SAND SHIELD	0511-4	DRIVES, FINAL	0201-4
DEFLECTOR, ROCK, MOUNTING PLATE	0131-2	DRIVING LIGHTS	1673-2
DEFLECTORS, ROCK	0131-10	DUCTWORK FOAM, AIR (S/N -XXXXXX)	1810-6
DEFROST LOUVERS (S/N -XXXXXX)	1810-6	DUST COVER AND MANIFOLD, AIR CONDITIONING COMPRESSOR	1832-8
DESIGNATION LABEL, HYDRAULIC AND HYDROSTATIC OIL TANK 10W30	1322-2	E	
DIAGNOSTIC PLUMBING, HYDROSTATIC/ TRANSMISSION	0363-6	ECU	0575-2
DIPSTICK TUBE SUPPORT BRACKET	0407-2	EDGE GUARD MOLDING, TILT CYLINDER PLUMBING	3263-4
DIPSTICK, ENGINE OIL	0407-2	EDGE, BLADE CUTTING	3201-2
DISCONNECT LABEL	1322-2	ELECTRICAL RESISTOR, CAB HEATER (UPPER)	1831-8
DISCONNECT SWITCH CABLE, MASTER	1671-2	ELECTRONIC DISPLACEMENT CONTROL VALVE	0355-22
DISCONNECT SWITCH, MASTER	1671-2	ELECTRONIC ENGINE CONTROL UNIT	0575-2
DISPLACEMENT CONTROL VALVE, ELECTRONIC	0355-22	ELECTRONIC SWITCH OVERHEAD CONTROL PANEL (S/N -XXXXXX)	1810-6
DOMELIGHT AND LIGHT BULB (S/N -XXXXXX)	1810-6	ELEMENT, AIR CLEANER FILTER WITH TURBOCHARGER	0521-2
DOMELIGHT AND LIGHT BULB	1810-5A	ELEMENT, ENGINE OIL FILTER (VSN 920839-)	0407-5
		ELEMENT, FINAL FUEL FILTER	0420-4
		ELEMENT, PRIMARY FUEL FILTER	0420-2
		ELEMENT, TRANSMISSION FILTER	0364-2
		END BIT, BLADE	3201-2
		END BITS FOR BLADE, CUPPED	3201-2

ALPHABETICAL INDEX - CONTINUED

	PAGE		PAGE
END CAP ASSEMBLY, HYDROSTATIC CHARGE HOUSING.....	0355-8	FAN POLY RIB BELT, (WITHOUT AIR CONDITIONING).....	0512-2
END CAP, HYDROSTATIC PUMP.....	0355-2	FAN PULLEY.....	0512-2
END CAP, HYDROSTATIC TRACK DRIVE MOTOR.....	0355-20	FAN SHIELD, RADIATOR.....	0511-2
ENGINE CONTROL UNIT.....	0575-2	FAN SHROUD, RADIATOR.....	0511-2
ENGINE COOLANT HEATER.....	0505-4	FAN SPACER.....	0512-2
ENGINE COOLANT HEATER POWER CORD.....	0505-4	FAN, AIR CONDITIONING CONDENSER.....	1832-2
ENGINE COOLANT HEATING ELEMENT.....	0505-4	FAN, ALTERNATOR.....	1672-2
ENGINE HARNESS START RELAY.....	1674-8	FAN, HEATER BLOWER (UPPER).....	1831-8
ENGINE OIL DIPSTICK.....	0407-2	FEEDBACK LINK, SWASHPLATE.....	0355-12
ENGINE OIL FILLER INLET COVER.....	0407-1	FEEDBACK SPRING, HYDROSTATIC TRACK DRIVE MOTOR.....	0355-20
ENGINE OIL FILLER TUBE.....	0407-2	FIELD KIT, AIR CONDITIONER.....	1832-2
ENGINE OIL FILLER TUBE CAP.....	0407-2	FILLER PLUG, HYDRAULIC RESERVOIR.....	2164-2
ENGINE OIL FILTER (VSN 920839-).....	0407-5	FILTER BRACKET, HYDRAULIC.....	2164-4
ENGINE OIL FILTER HEAD (VSN 920839-).....	0407-5	FILTER COVER PLATE, AIR (S/N -XXXXXX).....	1810-4
ENGINE OIL PAN.....	0407-2	FILTER COVER PLATE, AIR (S/N XXXXXX-).....	1810-5A
ENGINE OIL PAN DRAIN VALVE.....	2163-10	FILTER ELEMENT, AIR CLEANER WITH TURBOCHARGER.....	0521-2
ENGINE OIL PRESSURE SENSOR.....	1678-2	FILTER HEAD, ENGINE OIL (VSN 920839-).....	0407-5
ENGINE OVERHAUL KIT.....	0404-8	FILTER HEAD, HYDRAULIC.....	2164-4
ENGINE SHORT BLOCK ASSEMBLY.....	0404-6	FILTER HEAD, TRANSMISSION.....	0364-2
ENGINE SIDE SHIELD SERVICE DOOR.....	1912-2	FILTER HOSE, HYDRAULIC.....	2163-6
ENGINE SIDE SHIELDS, RIGHT AND LEFT.....	1912-2	FILTER HOSES, HYDROSTATIC.....	0363-12
ENGINE SPEED LABEL (S/N -XXXXXX).....	1810-4	FILTER, AIR.....	0521-2
ENGINE SPEED LABEL (S/N XXXXXX-).....	1810-5A	FILTER, CAB FRESH AIR (UPPER).....	1831-8
ENGINE SPEED LABEL, REVERSE RATIO (S/N -XXXXXX).....	1810-4	FILTER, ENGINE OIL (VSN 920839-).....	0407-5
ENGINE SPEED LABEL, REVERSE RATIO (S/N XXXXXX-).....	1810-5A	FILTER, FINAL FUEL.....	0420-4
ENGINE SPEED POTENTIOMETER SWITCH.....	1676-2	FILTER, HYDRAULIC OIL.....	2164-4
ENGINE SPEED REVERSE LABEL (S/N -XXXXXX).....	1810-4	FILTER, HYDROSTATIC/TRANSMISSION.....	0364-2
ENGINE SPEED REVERSE LABEL (S/N XXXXXX-).....	1810-5A	FILTER, PRIMARY FUEL.....	0420-2
ENGINE START AID, COLD WEATHER/ETHER.....	0505-2	FILTER, TRANSMISSION.....	0364-2
ENGINE VENTILATING HOSE.....	0408-2	FILTER, TRANSMISSION ELEMENT.....	0364-2
ENGINE VENTILATING SYSTEM.....	0408-2	FILTRATION MANIFOLD, HYDROSTATIC PUMP.....	0355-4
ENGINE WIRING HARNESS.....	1674-8	FINAL DRIVE BRAKE PISTON.....	0201-2
ENGINE, ENVIRONMENTAL DRAIN HOSE.....	2163-10	FINAL DRIVE BRAKE PISTON.....	0201-4
ENVIRONMENTAL DRAIN VALVE.....	2163-10	FINAL DRIVE DRAIN PLUG GUARDS.....	0201-6
ENVIRONMENTAL ENGINE DRAIN HOSE.....	2163-10	FINAL DRIVE GUARD KIT (LGP).....	0131-12
ETHER STARTING AID/COLD WEATHER.....	0505-2	FINAL DRIVE INNER HOUSING.....	0201-2
EVAPORATOR CORE (UPPER).....	1831-8	FINAL DRIVE INNER HOUSING.....	0201-4
EXHAUST MANIFOLD.....	0410-1	FINAL DRIVE INPUT GEAR.....	0201-2
EXHAUST MUFFLER.....	0531-2	FINAL DRIVE INPUT GEAR.....	0201-4
EXHAUST MUFFLER STACK.....	1911-2	FINAL DRIVE OUTER HOUSING.....	0201-2
EXHAUST MUFFLER STACK, CHROME.....	1911-2	FINAL DRIVE OUTER HOUSING.....	0201-4
EXHAUST VALVE, ENGINE.....	0409-2	FINAL DRIVES.....	0201-2
		FINAL DRIVES.....	0201-4
		FINAL DRIVES BRAKE.....	0201-2
		FINAL DRIVES BRAKE.....	0201-4
		FITTING, AIR CONDITIONING CHARGE.....	1832-4
		FITTINGS (AIR SUSPENSION SEAT).....	1821-26
		FITTINGS, BRAKE VALVE.....	1062-2
		FLANGED AXLE SHAFT SEAL.....	0201-2
		FLANGED AXLE SHAFT SEAL.....	0201-4
		FLOAT, AUXILIARY VALVE (FIFTH FUNCTION).....	3262-6
		FLOAT, AUXILIARY VALVE (FOURTH FUNCTION).....	3262-4
		FLOOR MAT.....	1810-10
		FLOOR PLATE ISOLATORS.....	1810-8
		FLOOR PLATE SEAL.....	1810-8
		FLOOR PLATE SEAL, CAB AND ROPS.....	1810-8
		FLYWHEEL.....	0433-1
		FLYWHEEL COUPLER.....	0325-2
		FLYWHEEL COVER.....	0540-2

F

FACEPLATE, ROPS SWITCHES.....	1810-2
FAN.....	0512-2
FAN AND HEATER CONTROL DECAL (S/N -XXXXXX).....	1810-6
FAN BELT.....	0512-2
FAN CONTROL AND HEATER DECAL (S/N -XXXXXX).....	1810-6
FAN DRIVE.....	0429-2
FAN DRIVE BELT.....	0429-2
FAN DRIVE HOUSING.....	0429-2
FAN DRIVE HUB.....	0429-2
FAN DRIVE PULLEY.....	0429-2
FAN GUARD.....	0511-2
FAN POLY RIB BELT.....	0512-2

ALPHABETICAL INDEX - CONTINUED

	PAGE		PAGE
FLYWHEEL HOUSING	0433-2		
FOAM/ISOLATOR, CAB NOISE REDUCTION	1807-2		
FOAM, AIR DUCTWORK (S/N -XXXXXX)	1810-6		
FOAM, UPPER HEATER DRAIN PAN	1831-8		
FOLLOWER, CAMSHAFT	0402-2		
FOOTREST, CAB	1810-8		
FOOTREST, ROPS	1810-8		
FORWARD GUARD, MAIN FRAME	1741-2		
FORWARD, NEUTRAL AND REVERSE LABEL	1322-2		
FORWARD, NEUTRAL, AND REVERSE TRANSMISSION CONTROL LEVER	0315-2		
FORWARD, NEUTRAL, AND REVERSE LABEL	0315-2		
FRAME, CAB DOOR AND GLASS	1813-2		
FRAME, LOW GROUND PRESSURE	3243-2		
FRAME, MAIN	1741-2		
FRAME, STANDARD	3243-2		
FRAME, TRACK	0131-2		
FRAME, TRACK (LOW GROUND PRESSURE)	0131-2		
FRENCH AND SPANISH LABELS AND DECALS	1322-4		
FRENCH OR SPANISH LABEL AND DECAL KIT	1322-4		
FRESH AIR FILTER, CAB (UPPER)	1831-8		
FRONT AXIAL PISTON HYDROSTATIC PUMP	0355-2		
FRONT CAB HEADLINER (WITH LOUVERS) (S/N -XXXXXX)	1810-6		
FRONT COUNTERWEIGHT	1749-2		
FRONT PLATE	0404-4		
FRONT ROPS HEADLINER	1810-2		
FRONT TRACK CHAIN IDLER AND BRACKETS	0133-8		
FRONT WINDOW GLASS	1814-2		
FRONT WINDOW WIPER	1814-6		
FUEL FILTER, FINAL	0420-4		
FUEL FILTER, PRIMARY	0420-2		
FUEL FIRED COOLANT HEATER KIT	0505-8		
FUEL HEATER KIT	0420-4		
FUEL HOSES	0563-2		
FUEL INJECTION LINES	0413-2		
FUEL INJECTION NOZZLE	0413-2		
FUEL INJECTION PUMP	0413-2		
FUEL LINES	0563-2		
FUEL LINES, FILTER	0420-6		
FUEL LINES, PRIMARY FUEL FILTER	0563-2		
FUEL SENDER WIRING HARNESS	0564-2		
FUEL SHUT OFF VALVE	0563-2		
FUEL TANK	0564-2		
FUEL TANK DRAIN VALVE	0564-2		
FUEL TANK FILLER CUP	0564-2		
FUEL TANK, FUEL SENDER	0564-2		
FUEL TRANSFER PUMP W/STRAIGHT FLEX FITTINGS	0421-1		
FUSE BLOCK LABEL	1674-4		
FUSE BLOCK LABEL	1674-6		
FUSE BLOCK LABEL, CAB (S/N -XXXXXX)	1810-4		
FUSE BLOCK LABEL, CAB (S/N XXXXXX-)	1810-5A		
FUSE COVER PLATE, CAB (S/N -XXXXXX)	1810-4		
FUSE COVER PLATE, CAB (S/N XXXXXX-)	1810-5A		
FUSE COVER PLATE, ROPS	1810-2		
FUSES, CIRCUIT BREAKER, AND ELECTRICAL RELAYS, CAB	1674-10		
FUSES, CIRCUIT BREAKER, AND ELECTRICAL RELAYS, ROPS	1674-12		
		G	
		GASKET KIT, ENGINE IN-CHASSIS OVERHAUL	0452-1
		GASKET KIT, ENGINE OVERHAUL	0452-2
		GASKET KIT, HYDRAULIC PUMP	2161-2
		GASKET KIT, HYDRAULIC PUMP, DRIVE THRU	2161-4
		GASKET, AIR INLET (VSN 920839-) (PE6068TT060)	0414-1
		GASKET, ENGINE CYLINDER HEAD	0409-2
		GASKET, ENGINE ROCKER ARM COVER	0402-3
		GASKET, HYDROSTATIC DRIVE MOTOR	0355-18
		GASKET, HYDROSTATIC END CAP	0355-8
		GASKET, HYDROSTATIC END CAP	0355-20
		GASKET, TIMING GEAR	0402-4
		GAUGE, HYDRAULIC RESERVOIR SIGHT	2164-2
		GEAR, CAMSHAFT	0402-1
		GEAR, CRANKSHAFT	0401-1
		GEAR, ENGINE OIL PUMP	0407-4
		GEAR, FLYWHEEL RING	0433-1
		GEAR, FUEL INJECTION PUMP	0413-2
		GEAR, IDLER	0404-4
		GLASS, CAB DOOR FRAME	1813-2
		GLASS, FRONT WINDOW	1814-2
		GLASS, REAR WINDOW	1814-2
		GRAY CIRCLE LABEL	1810-2
		GRID, SAND SHIELD DEFLECTOR	0511-4
		GRILLE	1921-2
		GRILLE HOUSING	1921-2
		GRILLE HOUSING HOSE GUARD	1921-2
		GRILLE MOUNTED AND REAR WORK LIGHTS	1673-2
		GRILLE, HEAVY DUTY	1921-4
		GRIP, CONTROLLER HANDLE, SINGLE LEVER CONTROL	0315-2
		GRIP, TRANSMISSION CONTROL LEVER	0315-2
		GROUND SPEED LABEL	0315-2
		GROUND STRAP, BATTERY	1671-2
		GROUND STRAP, MICROPROCESSOR TRANSMISSION CONTROLLER	0375-2
		GROUND STRAP, STARTER	1674-4
		GUARD KIT, FINAL DRIVE (LGP)	0131-12
		GUARD SUPPORT, SPROCKET	0131-2
		GUARD, AIR CONDITIONING PLUMBING (S/N -XXXXXX)	1810-4
		GUARD, AIR CONDITIONING PLUMBING (S/N -XXXXXX)	1810-6
		GUARD, AIR CONDITIONING PLUMBING (S/N XXXXXX-)	1810-5A
		GUARD, ANGLE HOSE	3263-8
		GUARD, C-FRAME HOSE	1921-4
		GUARD, CYLINDER	3265-2
		GUARD, FAN	0511-2
		GUARD, GRILLE HOUSING HOSE	1921-2
		GUARD, HEAVY DUTY HOSE	1921-4
		GUARD, LIGHT HARNESS	1673-4
		GUARD, MAIN FRAME, CENTER	1741-2
		GUARD, MAIN FRAME, FORWARD	1741-2
		GUARD, MAIN FRAME, REAR	1741-2
		GUARD, SPROCKET	0132-8
		GUARDS, FINAL DRIVE DRAIN PLUGS	0201-6
		GUARDS, REAR ROCK	0131-8
		GUARDS, REAR ROCK (LOW GROUND PRESSURE)	0131-8
		GUARDS, ROCK	0131-4
		GUARDS, ROCK (LOW GROUND PRESSURE AND X-LONG TRACK)	0131-6
		GUARDS, ROPS, LEFT AND RIGHT	1741-2
		GUIDE, CYLINDER ROD, ANGLE	3265-2
		GUIDE, CYLINDER ROD, LIFT	3265-4

ALPHABETICAL INDEX - CONTINUED

	PAGE		PAGE
GUIDE, CYLINDER ROD, TILT	3265-6	HEATER SWITCH, ROPS AND CAB UNDER SEAT	
GUIDE, IDLER	0133-8	HEATER	1831-2
		HEATER TOP COVER (UPPER)	1831-8
H		HEATER TRAY FOR ROPS AND CAB, UNDER	
		SEAT	1831-2
HANDLE GRIP, CAB DOOR HOLD OPEN	1813-4	HEATER, BLOWER FAN (UPPER)	1831-8
HANDLE, DOOR OUTER	1813-2	HEATER, CAB (UPPER)	1831-8
HANDLE, T-BAR CONTROL	3215-2	HEATER, COOLANT, FUEL FIRED	0505-8
HANDLE, TRANSMISSION CONTROL LEVER	0315-2	HEATER, ENGINE COOLANT	0505-4
HARDWARE KIT, A/C COMPRESSOR	1832-10	HEATER, ROPS AND CAB SEAT BASE	1831-2
HARNES FROM SEAT COMPRESSOR HARNESS TO		HEATER, ROPS AND CAB, UNDER SEAT	1831-2
FUSE BOX, AIR SUSPENSION SEAT WIRING	1821-24	HEATER, THERMAL EXPANSION VALVE, CAB	
HARNES FROM SEAT COMPRESSOR HARNESS TO		(UPPER)	1831-8
FUSE BOX, AIR SUSPENSION SEAT WIRING	1821-26	HEATER, UPPER CAB	1831-8
HARNES GUARD, LIGHT	1673-4	HEATING ELEMENT, ENGINE COOLANT	0505-4
HARNES, AIR CONDITIONING CONDENSER		HEAVY DUTY GRILLE	1921-4
WIRING	1832-2	HEAVY DUTY HOSE GUARD	1921-4
HARNES, CAB HEATER WIRING (UPPER)	1831-8	HEIGHT ADJUSTMENT KIT, SEAT (DELUXE)	1821-20
HARNES, CAB WIRING	1674-4	HI-INTENSITY LIGHTS, ROPS	1673-4
HARNES, CAB WORK LIGHT WIRING	1673-6	HIGH AND LOW PRESSURE AIR CONDITIONING	
HARNES, COMPRESSOR WIRING, SEAT (AIR		REFRIGERANT HOSES	1832-4
SUSPENSION)	1821-24	HIGH PRESSURE TRANSMISSION HOSES	0363-4
HARNES, ENGINE WIRING	1674-8	HIGH-INTENSITY LIGHTS, CAB	1673-6
HARNES, FUEL SENDER WIRING	0564-2	HINGE, HYDROSTATIC RESERVOIR DOOR	0364-4
HARNES, RADIO WIRING	2001-2	HITCH PIN, DRAWBAR	1511-2
HARNES, REAR WIPER MOTOR WIRING	1814-8	HITCH PIN, QUICK LOCK	1511-4
HARNES, ROPS WIRING	1674-6	HITCH PIN, RETRIEVAL HITCH	1511-4
HARNES, ROPS WORK LIGHT	1673-4	HITCH, PLATE, RETRIEVAL	1511-4
HARNES, SEAT POWER (AIR SUSPENSION)	1821-24	HOLD OPEN LATCH, CAB DOOR	1813-4
HARNES, TRANSMISSION WIRING	1674-2	HOLD OPEN, CAB DOOR	1813-4
HARNES, UNDER SEAT ROPS AND CAB HEATER		HOLDER, OPERATOR MANUAL	1821-4
WIRING	1831-2	HOLDER, OPERATOR MANUAL (DELUXE/AIR	
HARNES, WITH SWITCH AND COVER,		SUSPENSION)	1821-14
TRANSMISSION CONTROL LEVER	0315-2	HOOD	1911-2
HARNES, WITH SWITCH AND COVER, SINGLE		HOOD SERVICE DOOR	1911-2
LEVER CONTROL	0315-2	HOOD SUPPORT	1911-4
HEAD END PIN, ANGLE CYLINDER	3243-2	HOOD SUPPORT BAR	1911-4
HEAD END PIN, LIFT CYLINDER	3265-4	HOOD SUPPORT COWL SEAL	1911-4
HEAD END PIN, TILT CYLINDER	3201-2	HOOK, TOW	1512-2
HEAD, ENGINE CYLINDER	0409-2	HORN	2004-2
HEAD, FINAL FUEL FILTER	0420-4	HOSE GUARD, ANGLE CYLINDER	3263-8
HEAD, HYDRAULIC FILTER	2164-4	HOSE GUARD, C-FRAME	1921-4
HEAD, TRANSMISSION FILTER	0364-2	HOSE GUARD, GRILLE HOUSING	1921-2
HEADER KIT, PRIMARY FUEL FILTER	0420-2	HOSE GUARD, HEAVY DUTY	1921-4
HEADLIGHTS	1673-2	HOSE, AIR INTAKE	0521-2
HEADLINER COMPONENTS, CAB		HOSE, ANGLE, HEAD END	3263-8
(S/N -XXXXXX)	1810-6	HOSE, ANGLE, ROD END	3263-8
HEADLINER, CAB FRONT (WITH LOUVERS)		HOSE, CAB HEATER	1831-6
(S/N -XXXXXX)	1810-6	HOSE, CROSSBAR C-FRAME LUBRICATION	1743-6
HEADLINER, CAB REAR (WITH LOUVERS)		HOSE, CROSSBAR LUBE	1743-2
(S/N -XXXXXX)	1810-6	HOSE, DRIVE THRU PUMP, SUCTION	2163-8
HEADLINER, REAR ROPS	1810-2	HOSE, ENGINE VENTILATING	0408-2
HEADLINER, ROPS	1810-2	HOSE, ENVIRONMENTAL ENGINE DRAIN	2163-10
HEADREST (DELUXE)	1821-12	HOSE, FRONT AND SIDE WINDSHIELD WASHER	1814-6
HEADREST, CLOTH (AIR SUSPENSION)	1821-22	HOSE, HYDRAULIC FILTER	2163-6
HEADREST, VINYL (AIR SUSPENSION)	1821-22	HOSE, HYDRAULIC PRESSURE	2163-4
HEATER AND FAN CONTROL DECAL	1322-2	HOSE, HYDRAULIC PUMP TO CONTROL VALVE	2163-4
HEATER AND FAN CONTROL DECAL		HOSE, HYDRAULIC PUMP, SUCTION	2163-2
(S/N -XXXXXX)	1810-6	HOSE, HYDRAULIC VALVE TO FILTER	2163-6
HEATER CORE (UPPER)	1831-8	HOSE, HYDROSTATIC SUCTION	0363-8
HEATER CORE, ROPS AND CAB UNDER SEAT	1831-2	HOSES, A/C REFRIGERANT (HIGH AND LOW	
HEATER DRAIN PAN FOAM, UPPER	1831-8	PRESSURE)	1832-4
HEATER HOSE, CAB	1831-6	HOSES, AIR CONDITIONING CONDENSER	
HEATER KIT, FUEL	0420-4	REFRIGERANT	1832-2
HEATER PLUMBING, CAB	1831-6	HOSES, ANGLE HYDRAULIC	3263-6
HEATER PLUMBING, ROPS SEAT BASE	1831-4	HOSES, BRAKE	0363-2
		HOSES, BRAKE VALVE	0363-2

ALPHABETICAL INDEX - CONTINUED

	PAGE		PAGE
HOSES, C-FRAME LUBRICATION	3243-2	HYDRAULIC RESERVOIR DOOR	2164-2
HOSES, FUEL	0563-2	HYDRAULIC RESERVOIR DOOR LATCH	2164-2
HOSES, HYDRAULIC TILT PLUMBING	3263-4	HYDRAULIC RESERVOIR FILLER PLUG	2164-2
HOSES, HYDROSTATIC FILTER	0363-12	HYDRAULIC RESERVOIR SIGHT GAUGE	2164-2
HOSES, LIFT	3263-2	HYDRAULIC SIGHT LABEL	2164-2
HOSES, RIPPER	3263-10	HYDRAULIC SIX WAY BLADE LABEL	1322-2
HOSES, TILT, ROD AND HEAD END	3263-8	HYDRAULIC SIX WAY BLADE LABEL (S/N -XXXXXX)	1810-4
HOSES, TRANSMISSION COOLER BYPASS PLUMBING	0363-10	HYDRAULIC SIX WAY BLADE LABEL (S/N XXXXXX-)	1810-5A
HOSES, TRANSMISSION HIGH PRESSURE	0363-4	HYDRAULIC SUCTION HOSE	2163-2
HOUSING KIT, AIR CONDITIONING	1832-2	HYDRAULIC TANK DRAIN VALVE	2163-10
HOUSING, ENGINE OIL COOLER	0419-2	HYDRAULIC TANK TO HYDRAULIC PUMP SUCTION HOSE	2163-2
HOUSING, FAN DRIVE	0429-2	HYDRAULIC 6-WAY BLADE LABEL	1810-2
HOUSING, FLYWHEEL	0433-2	HYDROSTATIC AND HYDRAULIC OIL TANK 10W30 OIL DESIGNATION LABEL	1322-2
HOUSING, GRILLE	1921-2	HYDROSTATIC CAGE LOCATOR LINK	0355-12
HOUSING, HYDROSTATIC CHARGE	0355-8	HYDROSTATIC CHARGE HOUSING	0355-8
HOUSING, INNER FINAL DRIVE	0201-2	HYDROSTATIC CHARGE RELIEF VALVE	0355-2
HOUSING, INNER FINAL DRIVE	0201-4	HYDROSTATIC CHARGE RELIEF VALVE PLUG	0355-6
HOUSING, OUTER FINAL DRIVE	0201-2	HYDROSTATIC CYLINDER BLOCK ASSEMBLY WITH SPEED RING	0355-12
HOUSING, OUTER FINAL DRIVE	0201-4	HYDROSTATIC CYLINDER BLOCK KIT WITH SPEED RING	0355-12
HOUSING, TRACK ADJUSTER	0133-6	HYDROSTATIC ELECTRONIC DISPLACEMENT CONTROL VALVE	0355-2
HOUSING, WORK LIGHT CAB HI-INTENSITY	1673-6	HYDROSTATIC END CAP ASSEMBLY	0355-8
HOUSING, WORK LIGHT, ROPS	1673-4	HYDROSTATIC END CAP GASKET	0355-8
HUB, FAN DRIVE	0429-2	HYDROSTATIC END CAP GASKET	0355-20
HYDRAULIC AND HYDROSTATIC OIL TANK 10W30 OIL DESIGNATION LABEL	1322-2	HYDROSTATIC FILTER ADAPTER	0355-2
HYDRAULIC CONTROL LINKAGE	3215-2	HYDROSTATIC FILTER HOSES	0363-12
HYDRAULIC CONTROL SHAFT WITH ARM	3215-2	HYDROSTATIC FILTER SCREEN	0355-6
HYDRAULIC CONTROL U-JOINT (HOUSING)	3215-2	HYDROSTATIC FILTRATION MANIFOLD KIT	0355-4
HYDRAULIC CONTROL VALVE (DOES NOT INCLUDE HOSE ADAPTERS)	3262-2	HYDROSTATIC FRONT AND REAR PUMP COUPLING	0355-4
HYDRAULIC CONTROL VALVE COMPONENTS	3262-2	HYDROSTATIC HOSES, PUMP TO MOTOR	0363-4
HYDRAULIC CONTROL VALVE SPOOL SEAL KIT	3262-2	HYDROSTATIC MOTOR DRAIN HOSE	0363-10
HYDRAULIC CYLINDER PISTON, ANGLE	3265-2	HYDROSTATIC MOTOR SYNCH SHAFT KIT	0355-18
HYDRAULIC CYLINDER PISTON, LIFT	3265-4	HYDROSTATIC MOTOR VALVE	0355-22
HYDRAULIC CYLINDER PISTON, TILT	3265-6	HYDROSTATIC MOTOR, AXIAL PISTON	0355-16
HYDRAULIC CYLINDER PLUMBING, TILT	3263-4	HYDROSTATIC MOTORS, RIGHT AND LEFT HAND	0355-16
HYDRAULIC CYLINDER, ANGLE	3265-2	HYDROSTATIC MULTI FUNCTION VALVE	0355-2
HYDRAULIC CYLINDER, LIFT	3265-4	HYDROSTATIC MULTI FUNCTION VALVE	0355-6
HYDRAULIC CYLINDER, TILT	3265-6	HYDROSTATIC OIL COOLER	0511-2
HYDRAULIC FILTER BRACKET	2164-4	HYDROSTATIC OIL COOLER BYPASS VALVE	0363-10
HYDRAULIC FILTER HEAD	2164-4	HYDROSTATIC PUMP BEARING	0355-12
HYDRAULIC FILTER HOSE	2163-6	HYDROSTATIC PUMP CHARGING SYSTEM	0355-4
HYDRAULIC FLUID SIGHT LABEL	1322-2	HYDROSTATIC PUMP COMPONENTS	0355-2
HYDRAULIC HOSE, VALVE TO FILTER	2163-6	HYDROSTATIC PUMP COMPRESSION SPRING	0355-10
HYDRAULIC HOSES, ANGLE	3263-6	HYDROSTATIC PUMP DISPLACEMENT CONTROL VALVE	0355-14
HYDRAULIC HOSES, RIPPER	3263-10	HYDROSTATIC PUMP FILTRATION MANIFOLD	0355-4
HYDRAULIC HOSES, TILT PLUMBING	3263-4	HYDROSTATIC PUMP FRONT SHAFT	0355-2
HYDRAULIC LIFT HOSES	3263-2	HYDROSTATIC PUMP LEVELOR	0355-10
HYDRAULIC LINKAGE BOOT	3215-2	HYDROSTATIC PUMP PRESSURE CONTROL PILOT VALVE	0355-14
HYDRAULIC MOTOR TO HYDROSTATIC PUMP HOSES	0363-4	HYDROSTATIC PUMP RETAINING PLATE	0355-6
HYDRAULIC OIL COOLER	0511-2	HYDROSTATIC PUMP SHAFT	0355-10
HYDRAULIC OIL FILTER	2164-4	HYDROSTATIC PUMP SHAFT ROLLER BEARING	0355-10
HYDRAULIC OIL TEMPERATURE SENSOR	1678-2	HYDROSTATIC PUMP SIDE COVER	0355-2
HYDRAULIC PLUMBING, BLADE	3263-8	HYDROSTATIC PUMP SLIPPER GUIDE	0355-12
HYDRAULIC PRESSURE HOSE	2163-4	HYDROSTATIC PUMP SPEED RING	0355-12
HYDRAULIC PUMP COUPLING	2161-2	HYDROSTATIC PUMP SWASHPLATE GUIDE	0355-12
HYDRAULIC PUMP DRIVE THRU GASKET KIT	2161-4	HYDROSTATIC PUMP TO MOTOR HOSES	0363-4
HYDRAULIC PUMP GASKET KIT	2161-2	HYDROSTATIC REAR PUMP	0355-2
HYDRAULIC PUMP REPAIR KIT	2161-4	HYDROSTATIC REAR PUMP LIFTING BRACKET	0355-8
HYDRAULIC PUMP TO CONTROL VALVE, PRESSURE HOSE	2163-4		
HYDRAULIC PUMP, STANDARD	2161-2		
HYDRAULIC PUMP, WITH DRIVE THRU SHAFT	2161-4		
HYDRAULIC RESERVOIR	2164-2		
HYDRAULIC RESERVOIR COVER	2164-2		

ALPHABETICAL INDEX - CONTINUED

	PAGE		PAGE
HYDROSTATIC REAR PUMP SHAFT	0355-2	J	
HYDROSTATIC RESERVOIR	0364-4		
HYDROSTATIC RESERVOIR ACCESS COVER PLATE	0364-4	JACK SCREW, CAB	1811-4
HYDROSTATIC RESERVOIR COVER	0364-4	JACK SCREW, ROPS	1811-2
HYDROSTATIC RESERVOIR DOOR	0364-4	JET, PISTON COOLING	0404-2
HYDROSTATIC RESERVOIR DOOR HINGE	0364-4		
HYDROSTATIC RESERVOIR DOOR LATCH	0364-4	K	
HYDROSTATIC RESERVOIR SIGHT GAUGE LABEL	0364-4	KEY	1676-2
HYDROSTATIC RESERVOIR, CLEAN OUT COVER	0364-4	KEY START LABEL, CAB	
HYDROSTATIC RESERVOIR, NO WELDING LABEL	0364-4	(S/N -XXXXXX)	1810-4
HYDROSTATIC SERVO ARM	0355-12	KEY START LABEL, CAB	
HYDROSTATIC SERVO CAN CYLINDER	0355-2	(S/N XXXXXX-)	1810-5A
HYDROSTATIC SERVO PISTON KIT	0355-10	KEY START LABEL, ROPS	1810-2
HYDROSTATIC SHAFT SEAL ASSEMBLY	0355-6	KEY SWITCH	1676-2
HYDROSTATIC SIDE COVER INSERT	0355-10	KIT, AIR CONDITIONER, FIELD	1832-2
HYDROSTATIC SPEED SENSOR	0355-2	KIT, BRAKE VALVE	1062-2
HYDROSTATIC SPEED SENSOR	0355-6	KIT, CAB NOISE REDUCTION FOAM	1807-4
HYDROSTATIC SUCTION HOSE	0363-8	KIT, CYL. LINER O-RING (PE6068TT060)	
HYDROSTATIC TANK DRAIN VALVE	2163-10	(VSN 920839-)	0403-1
HYDROSTATIC TRACK DRIVE MOTOR	0355-18	KIT, CYLINDER BLOCK WITH SPEED RING	0355-12
HYDROSTATIC TRACK DRIVE MOTOR CONTROL		KIT, ENGINE OVERHAUL (PE6068TT060)	
MOTOR	0355-22	(VSN 920839-)	0403-1
HYDROSTATIC TRACK DRIVE MOTOR END CAP		KIT, FINAL DRIVE DRAIN PLUG GUARDS	0201-6
AND FEEDBACK SPRING	0355-20	KIT, FINAL DRIVE GUARD (LGP)	0131-12
HYDROSTATIC TRACK DRIVE MOTOR MAGNETIC		KIT, FINAL FUEL FILTER DRAIN VALVE	0420-4
RING SPEED SENSOR ON SHAFT	0355-18	KIT, FINAL FUEL FILTER SEAL	0420-4
HYDROSTATIC VARIABLE SWASHPLATE	0355-12	KIT, FRENCH OR SPANISH LABELS AND	
HYDROSTATIC WELDED PISTON ASSEMBLY	0355-12	DECALS	1322-4
HYDROSTATIC/TRANSMISSION DIAGNOSTIC		KIT, FUEL FIRED COOLANT HEATER	0505-8
PLUMBING	0363-6	KIT, FUEL HEATER	0420-4
HYDROSTATIC/TRANSMISSION FILTER	0364-2	KIT, HYDRAULIC PUMP REPAIR KIT	2161-4
HYDROSTATIC/TRANSMISSION SPEED SELECTOR		KIT, HYDROSTATIC FILTRATION MANIFOLD	0355-4
SOLENOID	0355-22	KIT, HYDROSTATIC SERVO PISTON	0355-10
HYDROSTATIC/TRANSMISSION TESTING LABEL	0363-6	KIT, LUMBAR (DELUXE AND AIR SUSPENSION)	1821-28
I		KIT, PRIMARY FUEL FILTER DRAIN VALVE	0420-2
IDLER GEAR	0404-4	KIT, PRIMARY FUEL FILTER HEADER	0420-2
IDLER GUIDE	0133-8	KIT, PRIMARY FUEL FILTER SEAL	0420-2
IDLER WITH BRACKETS	0133-8	KIT, ROCK DEFLECTOR	0131-10
IDLER YOKE, TRACK CHAIN TENSION ADJUSTER	0133-8	KIT, ROTARY SENSOR, TRANSMISSION CONTROL	
IDLER, SHAFT	0133-8	LEVER	0315-2
IDLER, TRACK CHAIN	0133-8	KIT, SEAT RECLINER	1821-30
IN-CHASSIS OVERHAUL GASKET KIT, ENGINE	0452-1	KIT, SLIDE LATCH (ALL SEATS)	1821-10
INJECTION PUMP, FUEL	0413-2	KIT, STARTING MOTOR SOLENOID	0422-2
INLET VALVE	3262-2	KNEE PAD	1810-12
INLET, WATER PUMP	0417-1	KNOB, LUMBAR (DELUXE AND AIR SUSPENSION)	1821-28
INPUT GEAR, FINAL DRIVE	0201-2	KNOB, RECLINER	1821-30
INPUT GEAR, FINAL DRIVE	0201-4	KNOB, REVERSE RATIO	1676-2
INSIDE DOZER ANGLE PLUMBING	3263-6	KNOB, WEIGHT ADJUSTMENT (DELUXE)	1821-16
INSIDE DOZER LIFT PLUMBING	3263-2		
INTAKE MANIFOLD (VSN 920839-)		L	
(PE6068TT060)	0414-1	LABEL (FRENCH AND SPANISH)	1322-4
INTAKE VALVE, ENGINE	0409-2	LABEL, CAB FUSE BLOCK	
INTAKE, ENGINE OIL PUMP	0407-4	(S/N -XXXXXX)	1810-4
ISOLATOR RADIATOR MOUNTS	0511-2	LABEL, CAB FUSE BLOCK	
ISOLATOR, CAB NOISE REDUCTION FOAM	1807-2	(S/N XXXXXX-)	1810-5A
ISOLATOR, CAB NOISE REDUCTION FOAM	1807-4	LABEL, CAB HIGH INTENSITY WORK LIGHTS	1673-6
ISOLATOR, POWER TRAIN RUBBER	0540-2	LABEL, CAUTION AND START	
ISOLATOR, TRANSMISSION	0325-2	(S/N -XXXXXX)	1810-4
ISOLATORS AND MOUNTS, CAB	1811-6	LABEL, CAUTION AND START	
ISOLATORS AND MOUNTS, ROPS	1811-6	(S/N XXXXXX-)	1810-5A
ISOLATORS, FLOOR PLATE	1810-8	LABEL, DISCONNECT	1322-2
		LABEL, ENGINE SPEED-REVERSE	
		(S/N -XXXXXX)	1810-4

0001-15

700J CRAWLER DOZER (S.N. -139435)

ALPHABETICAL INDEX - CONTINUED

	PAGE		PAGE
LABEL, ENGINE SPEED-REVERSE (S/N XXXXXX-)	1810-5A	LABEL, TIE DOWN	1322-2
LABEL, ENGINE SPEED, CAB (S/N -XXXXXX)	1810-4	LABEL, TRACK SAG	1322-2
LABEL, ENGINE SPEED, CAB (S/N XXXXXX-)	1810-5A	LABEL, TRANSMISSION FLUID SIGHT	1322-2
LABEL, ENGINE SPEED, ROPS	1810-2	LABEL, TRANSMISSION/HYDROSTATIC TESTING	0363-6
LABEL, FORWARD, NEUTRAL AND REVERSE	1322-2	LABEL, XLT	1322-2
LABEL, FORWARD, NEUTRAL, AND REVERSE	0315-2	LABEL, 700J	1322-2
LABEL, FUSE BLOCK	1674-4	LABELS AND DECALS (ENGLISH)	1322-2
LABEL, FUSE BLOCK	1674-6	LATCH LEVER, DOOR	1813-2
LABEL, GRAY CIRCLE	1810-2	LATCH, CAB DOOR	1813-2
LABEL, GROUND SPEED	0315-2	LATCH, CAB DOOR HOLD OPEN	1813-4
LABEL, HYDRAULIC FLUID SIGHT	1322-2	LATCH, HYDRAULIC RESERVOIR DOOR	2164-2
LABEL, HYDRAULIC SIGHT	2164-2	LATCH, HYDROSTATIC RESERVOIR DOOR	0364-4
LABEL, HYDRAULIC SIX WAY BLADE	1322-2	LATCH, STRIKER AND GUARD, CAB DOOR	1813-2
LABEL, HYDRAULIC SIX WAY BLADE (S/N -XXXXXX)	1810-4	LATCHES, CAB DOOR	1813-2
LABEL, HYDRAULIC SIX WAY BLADE (S/N XXXXX-)	1810-5A	LEAPING DEERE LABEL	1322-2
LABEL, HYDRAULIC 6-WAY BLADE	1810-2	LEFT AND RIGHT HAND HYDROSTATIC MOTORS	0355-16
LABEL, HYDROSTATIC AND HYDRAULIC OIL TANK 10W30 OIL DESIGNATION	1322-2	LEFT RAIL ASSEMBLY, POWER TRAIN MOUNTING	0540-2
LABEL, HYDROSTATIC RESERVOIR SIGHT GAUGE	0364-4	LEFT SIDE WINDOW	1814-2
LABEL, HYDROSTATIC RESERVOIR, NO WELDING	0364-4	LEVELOR, HYDROSTATIC PUMP	0355-10
LABEL, KEY START, CAB (S/N -XXXXXX)	1810-4	LEVER ASSEMBLY, SPEED	0315-2
LABEL, KEY START, CAB (S/N XXXXXX-)	1810-5A	LEVER CONTROL WITH SPEED IN GRIP, SINGLE	0315-2
LABEL, KEY START, ROPS	1810-2	LEVER, DOOR LATCH	1813-2
LABEL, LEAPING DEERE	1322-2	LEVER, PARK LOCK	1115-4
LABEL, LGP	1322-2	LEVER, TRANSMISSION CONTROL, WITH SPEED IN GRIP	0315-2
LABEL, LONG TRACK	1322-2	LGP FINAL DRIVE GUARD KIT	0131-12
LABEL, LOW GROUND PRESSURE	1322-2	LGP LABEL	1322-2
LABEL, MASTER DISCONNECT SWITCH	1671-2	LGP TRACK FRAME	0131-2
LABEL, PARK LOCK	1322-2	LIFT CYLINDER BORE SEAL KIT	3265-4
LABEL, PARK LOCK	1810-2	LIFT CYLINDER HEAD END PIN	3265-4
LABEL, PARK LOCK (S/N -XXXXXX)	1810-4	LIFT CYLINDER PLUMBING	3263-2
LABEL, PARK LOCK (S/N XXXXXX-)	1810-5A	LIFT CYLINDER ROD END PIN	3243-2
LABEL, REVERSE RATIO-ENGINE SPEED	1810-2	LIFT CYLINDER ROD SEAL KIT	3265-4
LABEL, REVERSE SPEED (S/N -XXXXXX)	1810-4	LIFT CYLINDER, HYDRAULIC	3265-4
LABEL, REVERSE SPEED (S/N XXXXXX-)	1810-5A	LIFT HOSES	3263-2
LABEL, ROPS	1810-2	LIFT PLUMBING, DOZER	3263-2
LABEL, ROPS (S/N -XXXXXX)	1810-4	LIFT STRAP, ENGINE	0409-4
LABEL, ROPS (S/N XXXXXX-)	1810-5A	LIFTING BRACKET, HYDROSTATIC REAR PUMP	0355-8
LABEL, SAFETY START PROCEDURE	1810-2	LIGHT AND BULB, DOME (S/N -XXXXXX)	1810-6
LABEL, SAFETY START PROCEDURE (S/N -XXXXXX)	1810-4	LIGHT BRACKET	1673-4
LABEL, SAFETY START PROCEDURE (S/N XXXXXX-)	1810-5A	LIGHT BRACKET, CAB HI-INTENSITY	1673-6
LABEL, SEAT BASE TILT PROCEDURE	1810-2	LIGHT BULB	1673-4
LABEL, SEAT BASE TILT PROCEDURE (S/N -XXXXXX)	1810-4	LIGHT BULB, CAB HI-INTENSITY	1673-6
LABEL, SEAT BASE TILT PROCEDURE (S/N XXXXXX-)	1810-5A	LIGHT CIRCUIT BREAKER	1673-4
LABEL, SEAT BELT WARNING	1322-2	LIGHT CIRCUIT BREAKER, CAB HI-INTENSITY	1673-6
LABEL, SEAT BELT WARNING	1810-2	LIGHT HARNESS GUARD	1673-4
LABEL, SEAT BELT WARNING (S/N -XXXXXX)	1810-4	LIGHT HARNESS, ROPS WIRING	1673-4
LABEL, SEAT BELT WARNING (S/N XXXXXX-)	1810-5A	LIGHT ON-OFF SWITCH	1676-2
		LIGHT TOGGLE/ROCKER SWITCH, CAB	1673-6
		LIGHT TOGGLE/ROCKER SWITCH, ROPS	1673-4
		LIGHT WIRING HARNESS, CAB WORK	1673-6
		LIGHT, HOUSING, WORK LIGHTS	1673-4
		LIGHTER, CIGAR	2006-2
		LIGHTS, CAB HI-INTENSITY	1673-6
		LIGHTS, DRIVING	1673-2
		LIGHTS, ROPS HI-INTENSITY	1673-4
		LIGHTS, WORK	1673-2
		LINE, TURBOCHARGER OIL	0416-2
		LINER, CYLINDER (PE6068TT060 (VSN 920839-)	0403-1
		LINES, FUEL	0563-2
		LINES, FUEL FILTER	0420-6
		LINES, FUEL INJECTION	0413-2
		LINES, HYDROSTATIC FILTER	0363-12
		LINK, HYDROSTATIC CAGE LOCATOR	0355-12

ALPHABETICAL INDEX - CONTINUED

	PAGE		PAGE
LINK, TRACK, LUBED	0132-2	METAL FACE SEAL, TRACK CHAIN IDLER	0133-8
LINK, TRACK, LUBED (CONTINUED)	0132-4	MICROPROCESSOR COVER	0375-2
LINKAGE BOOT, HYDRAULIC	3215-2	MICROPROCESSOR TRANSMISSION CONTROLLER	0375-2
LINKAGE, AUXILIARY VALVE (FOURTH FUNCTION)	3262-4	MICROPROCESSOR TRANSMISSION CONTROLLER GROUND STRAP	0375-2
LINKAGE, AUXILIARY VALVE WITH (FIFTH FUNCTION)	3262-6	MIRROR BRACKET, REAR	1810-14
LINKAGE, HYDRAULIC CONTROL	3215-2	MIRROR, REAR	1810-14
LOCK, PARK	1115-4	MIRROR, REAR VIEW	1810-2
LOGO PLATE, GRILLE	1921-2	MIRROR, REAR VIEW	1810-12
LONG TRACK LABEL	1322-2	MIRROR, REAR VIEW (S/N -XXXXXX)	1810-4
LOOP FLUSHING PISTON, HYDROSTATIC TRACK DRIVE MOTOR END CAP	0355-20	MIRROR, REAR VIEW (S/N XXXXXX-)	1810-5A
LOUVERS (S/N -XXXXXX)	1810-6	MOISTURE SENSOR, PRIMARY FUEL FILTER	0578-2
LOUVERS, CAB (S/N -XXXXXX)	1810-6	MOLDING, EDGE GUARD, TILT PLUMBING	3263-4
LOUVERS, DEFROST (S/N -XXXXXX)	1810-6	MONITOR ALARM, 12 VOLT WITH SHUTTER	1676-2
LOW AND HIGH PRESSURE AIR CONDITIONING REFRIGERANT HOSES	1832-4	MONITOR AND DASH	1676-2
LOW GROUND PRESSURE AND X-LONG TRACK ROCK GUARDS	0131-6	MOTOR MAGNETIC RING SPEED SENSOR ON SHAFT, HYDROSTATIC TRACK DRIVE	0355-18
LOW GROUND PRESSURE BOLT ON CROSSBAR SUPPORT	0131-2	MOTOR, AXIAL PISTON HYDROSTATIC	0355-16
LOW GROUND PRESSURE C-FRAME	3243-2	MOTOR, FRONT AND SIDE WINDOW WIPER	1814-6
LOW GROUND PRESSURE LABEL	1322-2	MOTOR, HYDROSTATIC	0355-16
LOW GROUND PRESSURE REAR ROCK GUARDS	0131-8	MOTOR, HYDROSTATIC TRACK DRIVE	0355-18
LOW GROUND PRESSURE TRACK FRAME	0131-2	MOTOR, HYDROSTATIC TRACK DRIVE CONTROL	0355-22
LOW PRESSURE HYDRAULIC HOSE	2163-2	MOTOR, REAR WIPER	1814-8
LOW PRESSURE HYDRAULIC HOSES	0363-8	MOTOR, STARTING	0422-2
LOW PRESSURE SWITCH, AIR CONDITIONING	1832-2	MOTORS, HYDROSTATIC, RIGHT AND LEFT HAND	0355-16
LOWER DASH PANEL	1810-2	MOUNTING BRACKET, HYDRAULIC FILTER HEAD	2164-4
LOWER DASH PANEL PLATE	1810-2	MOUNTING BRACKET, RADIO	2001-2
LUBE HOSE, CROSSBAR	1743-2	MOUNTING PLATE, ROCK DEFLECTOR	0131-2
LUBRICATION HOSE, CROSSBAR C-FRAME	1743-6	MOUNTING, POWER TRAIN	0540-2
LUBRICATION HOSES, C-FRAME	3243-2	MOUNTS AND ISOLATORS, CAB	1811-6
LUMBAR KIT (DELUXE AND AIR SUSPENSION)	1821-28	MOUNTS AND ISOLATORS, ROPS	1811-6
LUMBAR KNOB (DELUXE AND AIR SUSPENSION)	1821-28	MOUNTS, RADIATOR ISOLATOR	0511-2
LUNCH BOX AND CUP TRAY	1810-12	MUFFLER CHROME EXHAUST STACK	1911-2
		MUFFLER EXHAUST STACK	1911-2
		MUFFLER, EXHAUST	0531-2
		N	
		NEGATIVE BATTERY CABLE, HEAVY DUTY	1671-2
		NEUTRAL START SWITCH	0315-2
		NOISE REDUCTION FOAM/ISOLATOR, CAB	1807-2
		NOZZLE, FUEL INJECTION	0413-2
		NOZZLE, STARTING AID COLD WEATHER/ ETHER	0505-2
		O	
		OIL ACCESS COVER, MAIN FRAME	1741-2
		OIL COOLER THERMAL BYPASS VALVE	0363-10
		OIL COOLER, ENGINE	0419-2
		OIL COOLER, HYDRAULIC	0511-2
		OIL COOLER, HYDROSTATIC	0511-2
		OIL DESIGNATION LABEL, HYDROSTATIC AND HYDRAULIC OIL TANK 10W30	1322-2
		OIL FILTER, ENGINE (VSN 920839-)	0407-5
		OIL FILTER, HYDRAULIC	2164-4
		OIL LINE, TURBOCHARGER	0416-2
		OIL PRESSURE REGULATING VALVE, ENGINE	0404-2
		OIL PRESSURE SENSOR, ENGINE	1678-2
		OIL PRESSURE SENSOR, TRANSMISSION	1062-2
		OIL PUMP, ENGINE	0407-4
		OIL SEAL, ENGINE REAR	0433-2
M			
MAGNETIC RING SPEED SENSOR ON SHAFT, HYDROSTATIC TRACK DRIVE MOTOR	0355-18		
MAIN BEARING, ENGINE	0401-1		
MAIN FRAME	1741-2		
MANIFOLD AND DUST COVER, AIR CONDITIONING COMPRESSOR	1832-8		
MANIFOLD SEAL, A/C COMPRESSOR	1832-8		
MANIFOLD, EXHAUST	0410-1		
MANIFOLD, HYDROSTATIC PUMP FILTRATION	0355-4		
MANIFOLD, INTAKE (VSN 920839-) (PE6068TT060)	0414-1		
MANUAL HOLDER, OPERATOR	1821-4		
MASTER DISCONNECT SWITCH	1671-2		
MASTER DISCONNECT SWITCH CABLE	1671-2		
MASTER DISCONNECT SWITCH LABEL	1671-2		
MAT, FLOOR	1810-10		
MECHANICAL SEAT SUSPENSION (DELUXE)	1821-12		
MECHANICAL SEAT SUSPENSION (DELUXE)	1821-16		
MECHANICAL SEAT SUSPENSION (STANDARD)	1821-6		
MECHANICAL SEAT SUSPENSION SHOCK ABSORBER	1821-6		
MECHANICAL SEAT SUSPENSION SPRING KITS (DELUXE)	1821-20		

ALPHABETICAL INDEX - CONTINUED

	PAGE		PAGE
OIL TANK 10W30 OIL DESIGNATION LABEL, HYDRAULIC AND HYDROSTATIC	1322-2	PISTON RINGS (PE6068TT060) (VSN 920839-)	0403-1
OIL TEMPERATURE SENSOR, HYDRAULIC	1678-2	PISTON, FINAL DRIVE BRAKE PISTON	0201-2
OPERATOR MANUAL HOLDER	1821-4	PISTON, FINAL DRIVE BRAKE PISTON	0201-4
OPERATOR MANUAL HOLDER (DELUXE/AIR SUSPENSION)	1821-14	PISTON, HYDRAULIC CYLINDER, ANGLE	3265-2
ORIFICE, PISTON COOLING JET	0404-2	PISTON, HYDRAULIC CYLINDER, LIFT	3265-4
OUTER HOUSING, FINAL DRIVE	0201-2	PISTON, HYDRAULIC CYLINDER, TILT	3265-6
OUTER HOUSING, FINAL DRIVE	0201-4	PISTON, TRACK CHAIN TENSION ADJUSTER	0133-8
OUTLET VALVE	3262-2	PITCH JACK PIN, C-FRAME END	3243-2
OVERHAUL GASKET KIT, ENGINE	0452-2	PIVOT BALL, C-FRAME	3243-2
OVERHAUL KIT, ENGINE	0404-8	PIVOT SHAFT CAP	1743-4
OVERHAUL KIT, ENGINE (PE6068TT060) (VSN 920839-)	0403-1	PIVOT SHAFTS	1743-4
OVERHEAD CONTROL PANEL, ELECTRONIC SWITCH (S/N -XXXXXX)	1810-6	PLATE, AIR CONDITIONER REAR COVER (S/N -XXXXXX)	1810-4
P		PLATE, AIR CONDITIONER REAR COVER (S/N XXXXXX-)	1810-5A
PACKING KITS, ANGLE CYLINDER	3265-2	PLATE, AIR CONDITIONER SIDE COVER (S/N -XXXXXX)	1810-4
PAD, KNEE	1810-12	PLATE, AIR CONDITIONER SIDE COVER (S/N XXXXXX-)	1810-5A
PAD, SEAT BACK	1821-2	PLATE, AIR FILTER COVER (S/N -XXXXXX)	1810-4
PAN, ENGINE OIL	0407-2	PLATE, AIR FILTER COVER (S/N XXXXXX-)	1810-5A
PANEL, ELECTRONIC SWITCH OVERHEAD CONTROL (S/N -XXXXXX)	1810-6	PLATE, ARMREST (DELUXE/AIR SUSPENSION)	1821-14
PANEL, LOWER DASH, CAB (S/N -XXXXXX)	1810-4	PLATE, BACKING UNDER SEAT, CAB ONLY	1831-2
PANEL, LOWER DASH, CAB (S/N XXXXXX-)	1810-5A	PLATE, BATTERY HOLDDOWN, HEAVY DUTY	1671-2
PANEL, LOWER DASH, ROPS	1810-2	PLATE, BULKHEAD, TILT CYLINDER PLUMBING	3263-4
PARK BRAKE LOCK LEVER	1115-4	PLATE, CAB	1810-8
PARK BRAKE LOCK SWITCH	1115-4	PLATE, FRONT	0404-4
PARK BRAKE SPRING RETAINER	0201-2	PLATE, FUSE COVER, CAB (S/N -XXXXXX)	1810-4
PARK BRAKE SPRING RETAINER	0201-4	PLATE, FUSE COVER, CAB (S/N XXXXXX-)	1810-5A
PARK LOCK	1115-4	PLATE, FUSE COVER, ROPS	1810-2
PARK LOCK BELLCRANK	1115-4	PLATE, GRILLE LOGO	1921-2
PARK LOCK LABEL	1322-2	PLATE, LOWER DASH PANEL, CAB (S/N -XXXXXX)	1810-4
PARK LOCK LABEL	1810-2	PLATE, LOWER DASH PANEL, CAB (S/N XXXXXX-)	1810-5A
PARK LOCK LABEL (S/N -XXXXXX)	1810-4	PLATE, LOWER DASH PANEL, ROPS	1810-2
PARK LOCK LABEL (S/N XXXXXX-)	1810-5A	PLATE, RADIATOR COVER	1921-2
PARK LOCK SUPPORT BRACKET	1115-4	PLATE, RADIO BLANKING (S/N -XXXXXX)	1810-6
PEDAL, BRAKE	1115-2	PLATE, RETAINING, HYDROSTATIC PUMP	0355-6
PERIODIC SERVICE CHART	1322-2	PLATE, RETRIEVAL HITCH	1511-4
PILOT, PRESSURE CONTROL	0355-22	PLATE, ROPS	1810-8
PIN, ANGLE CYLINDER, HEAD END	3243-2	PLATE, SEAT BASE (MOUNTING BRACKET/RISER)	1821-4
PIN, ANGLE CYLINDER, ROD END	3201-2	PLATE, SINGLE LEVER CONTROL MOUNTING	0315-2
PIN, CROSSBAR	1743-2	PLATE, TRANSMISSION CONTROL LEVER	0315-2
PIN, DRAWBAR	1511-2	PLATE, TRANSMISSION CONTROL LEVER MOUNTING	0315-2
PIN, DRAWBAR, 4000S WINCH	1511-6	PLUG, HYDRAULIC RESERVOIR FILLER	2164-2
PIN, HITCH	1511-2	PLUG, HYDROSTATIC CHARGE RELIEF VALVE	0355-6
PIN, LIFT CYLINDER, HEAD END	3265-4	PLUG, REAR WINDOW	1814-2
PIN, LIFT CYLINDER, ROD END	3243-2	PLUG, WINDOW	1814-2
PIN, PITCH JACK, C-FRAME END	3243-2	PLUMBING (HIGH AND LOW PRESSURE REFRIGERANT HOSES) AIR CONDITIONING	1832-4
PIN, QUICK LOCK HITCH	1511-4	PLUMBING, ANGLE CYLINDER	3263-6
PIN, RETRIEVAL HITCH	1511-4	PLUMBING, BLADE HYDRAULIC	3263-8
PIN, TILT CYLINDER, HEAD END	3201-2	PLUMBING, CAB HEATER	1831-6
PIN, TILT CYLINDER, ROD END	3243-2	PLUMBING, HYDRAULIC TILT HOSES	3263-4
PINS, BLADE	3201-2	PLUMBING, HYDROSTATIC/TRANSMISSION DIAGNOSTIC	0363-6
PINS, C-FRAME	3243-2	PLUMBING, LIFT CYLINDER	3263-2
PISTON (LOOP FLUSHING), HYDROSTATIC TRACK DRIVE MOTOR END CAP	0355-20	PLUMBING, ROPS SEAT BASE HEATER	1831-4
PISTON (PE6068TT060) (VSN 920839-)	0403-1		
PISTON ASSEMBLY, HYDROSTATIC PUMP	0355-12		
PISTON COOLING JET	0404-2		

000I-18

700J CRAWLER DOZER (S.N. -139435)

ALPHABETICAL INDEX - CONTINUED

PAGE	PAGE		
PLUMBING, TILT CYLINDER.....	3263-4	RADIO BLANKING PLATE	
PLUMBING, TRANSMISSION COOLER BYPASS.....	0363-10	(S/N -XXXXXX).....	1810-6
POPNET (CHARGE RELIEF), HYDROSTATIC		RADIO COVER	
TRACK DRIVE MOTOR END CAP.....	0355-20	(S/N -XXXXXX).....	1810-6
PORT, POWER (12V).....	2006-2	RADIO MOUNTING BRACKET.....	2001-2
POSITIVE BATTERY CABLE, HEAVY DUTY.....	1671-2	RADIO SPEAKERS.....	2001-2
POTENTIOMETER ENGINE SPEED SWITCH.....	1676-2	RADIO WIRING HARNESS.....	2001-2
POWER ACCESSORY.....	2006-2	RAIL ASSEMBLY, POWER TRAIN MOUNTING.....	0540-2
POWER CONVERTER, 24V TO 12V (5 AMP).....	2006-2	REAR ACCESS COVER, MAIN FRAME.....	1741-2
POWER CORD, ENGINE COOLANT HEATER.....	0505-4	REAR ATTACHMENTS MIRROR.....	1810-14
POWER PORT (12V).....	2006-2	REAR CAB HEADLINER (WITH LOUVERS)	
POWER TRAIN BRACKET.....	0540-2	(S/N -XXXXXX).....	1810-6
POWER TRAIN LEFT RAIL ASSEMBLY.....	0540-2	REAR GUARD ASSEMBLY, MAIN FRAME.....	1741-2
POWER TRAIN MOUNTING.....	0540-2	REAR MIRROR.....	1810-14
POWER TRAIN RIGHT RAIL ASSEMBLY.....	0540-2	REAR MIRROR BRACKET.....	1810-14
POWER TRAIN RUBBER ISOLATOR.....	0540-2	REAR OIL SEAL, ENGINE.....	0433-2
PRESSURE CONTROL PILOT.....	0355-22	REAR ROCK GUARDS.....	0131-8
PRESSURE HOSE, HYDRAULIC.....	2163-4	REAR ROCK GUARDS (LOW GROUND PRESSURE).....	0131-8
PRESSURE HOSE, HYDRAULIC PUMP TO CONTROL		REAR ROCK GUARDS (X-LONG TRACK).....	0131-8
VALVE.....	2163-4	REAR ROPS HEADLINER.....	1810-2
PRESSURE SENSOR, ENGINE OIL.....	1678-2	REAR VIEW MIRROR.....	1810-2
PRIMARY FUEL FILTER LINES.....	0563-2	REAR VIEW MIRROR.....	1810-12
PTO SHAFT COVER.....	2161-4	REAR VIEW MIRROR	
PULLEY, AIR CONDITIONING COMPRESSOR.....	1832-6	(S/N -XXXXXX).....	1810-4
PULLEY, ALTERNATOR.....	1672-2	REAR VIEW MIRROR	
PULLEY, CRANKSHAFT.....	0429-1	(S/N XXXXXX-).....	1810-5A
PULLEY, FAN.....	0512-2	REAR WINDOW GLASS.....	1814-2
PULLEY, FAN DRIVE.....	0429-2	REAR WINDOW PLUG.....	1814-2
PULLEY, TENSIONER.....	0429-2	REAR WINDOW WIPER.....	1814-8
PULLEY, WATER PUMP.....	0417-1	REAR WIPER BLADE.....	1814-8
PUMP CHARGING SYSTEM, HYDROSTATIC.....	0355-4	REAR WIPER FLOW CONTROL VALVE.....	1814-8
PUMP COMPONENTS, HYDROSTATIC.....	0355-2	REAR WIPER MOTOR.....	1814-8
PUMP PULLEY AND INLET, WATER.....	0417-1	REAR WIPER MOTOR COVER.....	1814-8
PUMP REPAIR KIT, HYDRAULIC.....	2161-4	REAR WIPER MOTOR WIRING HARNESS.....	1814-8
PUMP TO CONTROL VALVE, HYDRAULIC		REAR WORK LIGHT.....	1673-2
PRESSURE HOSE.....	2163-4	RECEIVER DRYER, AIR CONDITIONING.....	1832-2
PUMP, DRIVE THRU, SUCTION HOSE.....	2163-8	RECIRCULATION AIR COVER	
PUMP, ENGINE OIL.....	0407-4	(S/N -XXXXXX).....	1810-4
PUMP, FRONT AXIAL PISTON HYDROSTATIC.....	0355-2	RECIRCULATION AIR COVER	
PUMP, FUEL INJECTION.....	0413-2	(S/N XXXXXX-).....	1810-5A
PUMP, HYDRAULIC WITH DRIVE THRU SHAFT.....	2161-4	RECLINER KIT, SEAT.....	1821-30
PUMP, REAR, HYDROSTATIC.....	0355-2	RECLINER KNOB, SEAT.....	1821-30
PUMP, STANDARD HYDRAULIC.....	2161-2	REFRIGERANT HOSES, AIR CONDITIONING	
PUMP, WATER.....	0402-4	(HIGH AND LOW PRESSURE).....	1832-4
PUMP, WINDSHIELD WIPER WASHER TANK.....	1814-4	REFRIGERANT HOSES, AIR CONDITIONING	
PUMP,FUEL TRANSFER		CONDENSER.....	1832-2
W/STRAIGHT FLEX FITTINGS.....	0421-1	REFRIGERANT LINES, AIR CONDITIONING.....	1832-2
PUSH ROD, ENGINE.....	0402-2	RELAY, ENGINE HARNESS START.....	1674-8
		RELAY, START, ENGINE WIRING HARNESS.....	1674-8
		RELAYS, CIRCUIT BREAKER, AND FUSES,	
		CAB.....	1674-10
		RELAYS, CIRCUIT BREAKER, AND FUSES,	
		ROPS.....	1674-12
		RELIEF VALVE, AUXILIARY HYDRAULIC VALVE	
		(FIFTH FUNCTION).....	3262-6
		RELIEF VALVE, AUXILIARY HYDRAULIC VALVE	
		(FOURTH FUNCTION).....	3262-4
		REPAIR KIT, HYDRAULIC PUMP.....	2161-4
		RESERVOIR CAP, WASHER FLUID.....	1814-4
		RESERVOIR FILLER PLUG, HYDRAULIC.....	2164-2
		RESERVOIR TO HYDRAULIC PUMP SUCTION HOSE.....	2163-2
		RESERVOIR, HYDRAULIC.....	2164-2
		RESERVOIR, HYDROSTATIC.....	0364-4
		RESERVOIR, WINDSHIELD WIPER WASHER.....	1814-4
		RESISTOR CAB HEATER, ELECTRICAL	
		(UPPER).....	1831-8
		RESISTOR, CAN TERMINATION.....	1674-4

Q

QUICK-CONNECT COUPLER, BRAKE HOSES.....0363-2

R

RADIATOR.....0511-2
RADIATOR CAP.....0511-2
RADIATOR COVER PLATE.....1921-2
RADIATOR DRAIN COCK.....0511-2
RADIATOR DRAIN VALVE.....0511-2
RADIATOR FAN SHIELD.....0511-2
RADIATOR FAN SHROUD.....0511-2
RADIATOR ISOLATOR MOUNTS.....0511-2
RADIATOR RECOVERY TANK.....0511-2
RADIO.....2001-2