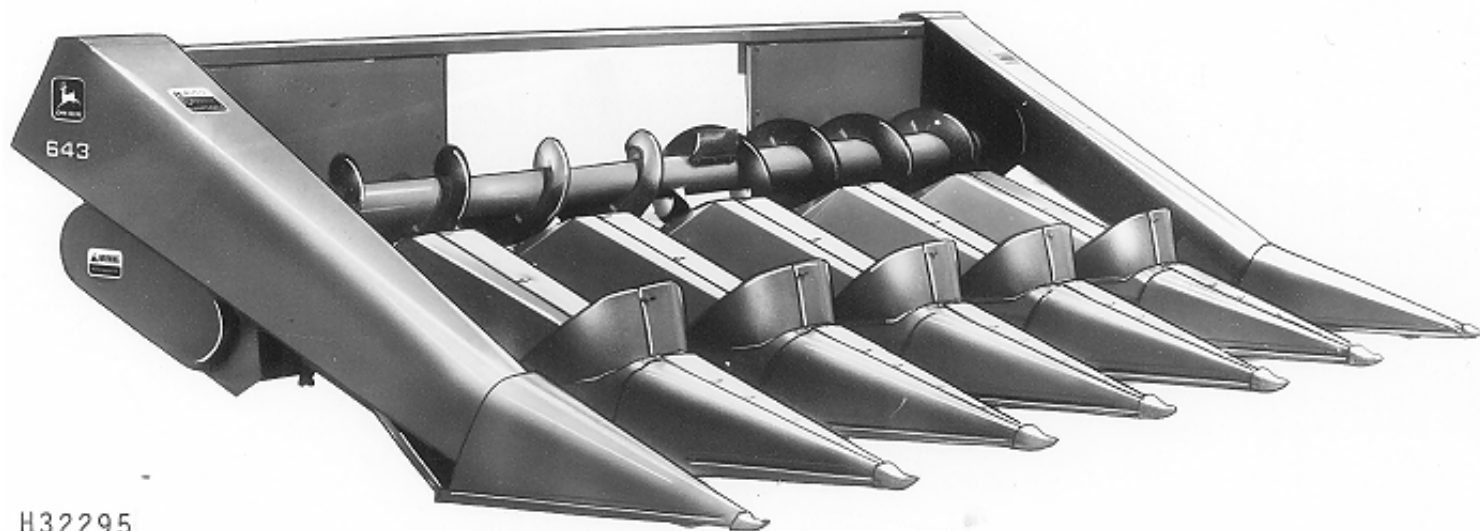


H32295 -UN-01JAN94



H32295

JOHN DEERE 643 CORN HEAD

(SPECIFICATIONS AND DESIGN SUBJECT TO CHANGE WITHOUT NOTICE)

DATE OF MANUFACTURE

MODEL NO.	DATE
243	(1969-1987)
244	(1969-1987)
343	(1969-1987)
344	(1969-1979)
443	(1969-1993)
444	(1969-1993)
543	(1973-1978)(1988-1989)
546	(1970-1993)
642	(1969-1977)
643	(1969-1993)
644	(1969-1993)
645	(1970-1993)
842	(1969-1977)
843	(1969-1993)
844	(1979-1993)
1243	(1980-1993)

## SERIAL NUMBER PLATE

USE ALL NUMBERS, LETTERS AND SPACES SHOWN ON THE SERIAL NUMBER PLATE IN WARRANTY CORRESPONDENCE.

CORN HEADS (      -567200)

ON THESE CORN HEADS, THE SERIAL NUMBER PLATE IS LOCATED ON THE RIGHT-HAND SIDE OF THE FRAME.

*EXAMPLE: E0444567200H*

E - EQUIPMENT  
0444 - CORN HEAD MODEL  
567200 - CORN HEAD SERIAL NUMBER  
H - FACTORY (HARVESTER WORKS)

CORN HEADS (567201-      )

ON THESE CORN HEADS, THE SERIAL NUMBER PLATE IS LOCATED ON THE RIGHT-HAND SIDE OF THE FRAME

*EXAMPLE: H00444X567201  
CORN HEAD*

(FIRST LINE)      H0 - FACTORY (HARVESTER WORKS)  
0444 - CORN HEAD MODEL  
X - CONFIGURATION/MODEL SUFFIX  
567201 - CORN HEAD SEQUENCE NUMBER (SERIAL NUMBER)  
(SECOND LINE) CORN HEAD - PRODUCT TYPE

*COPYRIGHT (C) 2000. DEERE & COMPANY. MOLINE, ILLINOIS.  
ALL RIGHTS RESERVED*

## DIRECTION ARROW

ARROWS ARE USED WITH ILLUSTRATIONS TO INDICATE THE FRONT OF THE UNIT. "RIGHT-HAND" AND "LEFT-HAND" SIDES ARE DETERMINED BY FACING IN THE DIRECTION OF MACHINE FORWARD TRAVEL.

## BOX-ENCLOSED ILLUSTRATIONS

A KEY NUMBER, SHOWN IN THE PARTS LIST, IS ASSIGNED TO A BOX ENCLOSING ALL PARTS SOLD AS A SERVICE ASSEMBLY. A BOX NOT KEYED INCLUDES NON-CURRENT PARTS.

## KITS

KIT INFORMATION WILL BE FOUND IMMEDIATELY FOLLOWING THE STORY IN WHICH IT IS USED. THE ILLUSTRATION IS REPEATED WITH ONLY THE KIT PARTS CALLED OUT AND ALL OTHER PARTS SHOWN IN PHANTOM

## JDM REMANUFACTURED COMPONENTS

THE SERVICE PARTS LISTED IN THIS CATALOG ARE INTENDED FOR THE REPAIR OF ORIGINAL EQUIPMENT COMPONENTS. ALTHOUGH MOST SERVICE PARTS MAY BE USED TO REPAIR REMANUFACTURED COMPONENTS, THE REMANUFACTURED DESIGN MAY CHANGE PARTS SUFFICIENTLY SO THAT SERVICE PARTS ARE INADEQUATE OR NOT USABLE.

## BOLT AND CAP SCREW STRENGTH IDENTIFICATION

BOLTS AND CAP SCREWS REQUIRED TO HAVE HIGH-STRENGTH QUALITIES EQUIVALENT TO SAE GRADE 8 ARE IDENTIFIED THROUGHOUT THIS CATALOG BY THE DESCRIPTION HS SAE 8. ALL STANDARD BOLTS AND CAP SCREWS ARE SAE GRADE 5 OR LOWER. BOLTS AND CAP SCREWS REQUIRED TO HAVE HIGH-STRENGTH QUALITIES EQUIVALENT TO PROPERTY CLASS 10.9 ARE IDENTIFIED THROUGHOUT THIS CATALOG BY THE DESCRIPTION HS 10.9. ALL STANDARD BOLTS AND CAP SCREWS ARE PROPERTY CLASS 8.8 OR LOWER.

## SI UNITS OF MEASURE

METRIC DIMENSIONS ARE GIVEN, WHERE APPLICABLE, THROUGHOUT THIS PARTS CATALOG.

## TRADEMARKS

THROUGHOUT THIS PARTS CATALOG, YOU WILL FIND THE FOLLOWING DEERE & COMPANY TRADEMARKS:

DIAL-A-SPEED™

DIAL-A-MATIC™

HARVESTRAK™

POSI-TORQ™

TORQ-GARD SUPREME®

QUIK-TATCH™

## CHANGE INDICATOR LINE

CHANGES AFFECTING THE ORDERING OF PARTS ARE IDENTIFIED BY VERTICAL LINES MARKED IN THE L. H. MARGIN OF REVISED PARTS LISTING IMAGES. A LINE IS ALSO AT THE LEFT-HAND EDGE OF THE SAME PART NUMBER IN THE NUMERICAL INDEX TO SHOW THE LOCATION OF REVISED INFORMATION.

## FUNCTION CODE

(EXAMPLE - FC: 5000)

FUNCTION CODES ARE LOCATED ON EACH PAGE IN THE UPPER RIGHT-HAND CORNER ON THE TITLE LINE. THE CODE LISTED IS A GROUPING CODE THAT CAN BE USED FOR WARRANTIES AND FOR DTAC TO IDENTIFY CERTAIN AREAS.

## COMPLETE GOODS LISTINGS

COMPLETE GOODS ARE IN BOLD FACE TYPE. ORDER SEPARATELY. DO NOT INCLUDE ON REPLACEMENT PARTS ORDER.

## ALPHABETICAL INDEX

GRID	PAGE	GRID	PAGE
A			
C11	AUGER (344, 443, 444, 543, 642, 643) .....	60	
C11	AUGER (644, 645, 842, 843, 844) .....	60	
B21	AUGER DRIVES, CROSS (444, 543, 546, 642)( -332700) .....	48	
B21	AUGER DRIVES, CROSS (643, 644, 645, 842, 843)( -332700) .....	48	
C13	AUGER FLOOR AND SHIELD (344, 443, 444, 543, 546) .....	62	
C15	AUGER FLOOR AND SHIELD (344, 443, 444, 543, 546) .....	64	
C13	AUGER FLOOR AND SHIELD (642, 643, 644, 842, 843, 844) .....	62	
C15	AUGER FLOOR AND SHIELD (642, 643, 644, 842, 843, 844) .....	64	
C21	AUGER SHIELD (243, 244, 343, 344, 443, 444) .....	70	
C21	AUGER SHIELD (543, 546, 643, 644, 645, 843, 1243) .....	70	
C13	AUGER SLOWDOWN SHIELDS .....	62	
C15	AUGER SLOWDOWN SHIELDS .....	64	
C17	AUGER SLOWDOWN SHIELDS (1243) .....	66	
C19	AUGER SLOWDOWN SHIELDS (1243) .....	68	
C17	AUGER SLOWDOWN SPROCKETS (1243) .....	66	
C19	AUGER SLOWDOWN SPROCKETS (1243) .....	68	
C17	AUGER, CROSS (1243)(471048- ) .....	66	
C19	AUGER, CROSS (1243)(471048- ) .....	68	
C9	AUGER, CROSS (243, 244, 343) .....	58	
C18	AUGER, CROSS (1243) .....	67	
C20	AUGER, CROSS (1243) .....	69	
C1	AUGER, CROSS, DRIVE (1243)(471048- ) .....	50	
C3	AUGER, CROSS, DRIVE (1243)(471048- ) .....	52	
C7	AUGER, CROSS, DRIVE (243, 244, 343) .....	56	
C1	AUGER, CROSS, DRIVE (444, 543, 546, 643)( -332701) .....	50	
C3	AUGER, CROSS, DRIVE (444, 543, 546, 643)(332701- ) .....	52	
C1	AUGER, CROSS, DRIVE (644, 645, 843)( -332701) .....	50	
C3	AUGER, CROSS, DRIVE (644, 645, 843)(332701- ) .....	52	
C3	AUGER, CROSS, DRIVE (844)(380601- ) .....	52	
C1	AUGER, CROSS, DRIVES (844)(380601- ) .....	50	
B			
D5	BACK SHEETS AND MAIN FRAME (1243, 471048- ) .....	78	
D5	BACK SHEETS AND MAIN FRAME (844) .....	78	
B10	BARREL, STALK ROLL .....	36	
B8	BARREL, STALK ROLLS .....	34	
C18	BEARING, CROSS AUGER (1243) .....	67	
C20	BEARING, CROSS AUGER (1243) .....	69	
C18	BRACKET, CROSS AUGER (1243) .....	67	
C20	BRACKET, CROSS AUGER (1243) .....	69	
D11	BRACKET, STUBBLE LIGHT ( -640300) .....	84	
D12	BRACKET, STUBBLE LIGHT (640301- ) .....	86	
C			
C18	CARRIER, BEARING, CROSS AUGER (1243) .....	67	
C20	CARRIER, BEARING, CROSS AUGER (1243) .....	69	
B13	CASE, GEAR .....	40	
B15	CASE, GEAR .....	42	
A24	CENTER GATHERER POINTS (1243) .....	24	
A24	CENTER GATHERER POINTS (243, 244, 343, 344, 443, 444) .....	24	
A24	CENTER GATHERER POINTS (543, 546, 643, 644, 645, 843, 844) .....	24	
A17	CENTER GATHERER POINTS (642 AND 842) .....	16	
A23	CENTER GATHERER POINTS (642 AND 842) .....	23	
B3	CENTER GATHERER SHIELD EXTENSIONS .....	28	
B1	CENTER GATHERER SHIELDS .....	26	
B18	CHAIN, GATHERER .....	45	
B12	CLUTCH, SLIP, ROW-UNIT .....	38	
C18	COLLAR, CROSS AUGER (1243) .....	67	
C20	COLLAR, CROSS AUGER (1243) .....	69	
E9	CONSTANT VELOCITY HEADER DRIVE SHAFT - SIDEHILL - WEASLER( 643,644,843,844) .....	110	
D24	COUPLER & SHIELD, MAIN DRIVE-6620SH CONV (444) ( -640500) .....	100	
D21	COUPLER AND DRIVE SHAFT (1243 (635101- ) .....	96	
D17	COUPLER AND MAIN DRIVE SHAFT (433, 444, 546, 642 ( -635100) .....	92	
D19	COUPLER AND MAIN DRIVE SHAFT (433, 444, 546, 642 ( -635100) .....	94	
D21	COUPLER AND MAIN DRIVE SHAFT (443, 444, 546, 643 (635101- ) .....	96	
D17	COUPLER AND MAIN DRIVE SHAFT (543 ( -380600) .....	92	
D19	COUPLER AND MAIN DRIVE SHAFT (543 ( -380600) .....	94	
D17	COUPLER AND MAIN DRIVE SHAFT (543 (620801-635100) .....	92	
D19	COUPLER AND MAIN DRIVE SHAFT (543 (620801-635100) .....	94	
D17	COUPLER AND MAIN DRIVE SHAFT (642, 842 ( -332700) .....	92	
D19	COUPLER AND MAIN DRIVE SHAFT (642, 842 ( -332700) .....	94	
D17	COUPLER AND MAIN DRIVE SHAFT (643, 644, 645 ( -635100) .....	92	
D19	COUPLER AND MAIN DRIVE SHAFT (643, 644, 645 ( -635100) .....	94	
D21	COUPLER AND MAIN DRIVE SHAFT (644, 645, 843, 844 (635101- ) .....	96	
D17	COUPLER AND MAIN DRIVE SHAFT (842, 843, 844, 1243 ( -635100) .....	92	
D19	COUPLER AND MAIN DRIVE SHAFT (842, 843, 844, 1243 ( -635100) .....	94	

## ALPHABETICAL INDEX - CONTINUED

<i>GRID</i>		<i>PAGE</i>	<i>GRID</i>		<i>PAGE</i>
D23	COUPLER AND SHIELD, MAIN DRIVE SHAFT .....	98	D19	DRIVE SHAFT, MAIN, AND COUPLER	
D25	COUPLER, MAIN DRIVE SHAFT (9500SH CONV.)			(543 ( -380600).....	94
	(R.H.) .....	101	D17	DRIVE SHAFT, MAIN, AND COUPLER	
E3	COUPLER, MAIN DRIVE SHAFT, SIDEHILL			(642, 842 ( -332700).....	92
	(643, 644, 843, 844) (645251- ) .....	104	D19	DRIVE SHAFT, MAIN, AND COUPLER	
E1	COUPLER, MAIN DRIVE-643 SIDEHILL (6620SH			(642, 842 ( -332700).....	94
	CONV.) ( -640500) .....	102	D17	DRIVE SHAFT, MAIN, AND COUPLER	
C17	CROSS AUGER			(643, 644, 645 ( -635100) .....	92
	(1243)(471048- ).....	66	D19	DRIVE SHAFT, MAIN, AND COUPLER	
C19	CROSS AUGER			(643, 644, 645 ( -635100) .....	94
	(1243)(471048- ).....	68	D21	DRIVE SHAFT, MAIN, AND COUPLER	
C9	CROSS AUGER			(644, 645, 843, 844 (635101- ) .....	96
	(243, 244, 343) .....	58	D17	DRIVE SHAFT, MAIN, AND COUPLER	
C18	CROSS AUGER (1243) .....	67		(842, 843, 844, 1243 ( -635100) .....	92
C20	CROSS AUGER (1243) .....	69	D19	DRIVE SHAFT, MAIN, AND COUPLER	
C5	CROSS AUGER SLOW DOWN .....	54		(842, 843, 844, 1243 ( -635100) .....	94
			E1	DRIVE SHAFT, MAIN, 643 SIDEHILL (6620SH	
	<b>D</b>			CONV.)( -640500) .....	102
D15	DECAL, DRIVE SHAFT		B19	DRIVE, ROW-UNIT AND CROSS AUGER	
	(443, 444, 543, 546) .....	90		(643, 644, 645, 842, 843) ( -332700) .....	46
D24	DECAL, DRIVE SHAFT		B21	DRIVES, ROW-UNIT AND CROSS AGUER	
	(444) ( -640500) .....	100		(643, 644, 645, 842, 843)( -332700) .....	48
D15	DECAL, DRIVE SHAFT		C3	DRIVES, ROW-UNIT AND CROSS AUGER	
	(642, 643, 644, 645, 842, 843, 844).....	90		(1243)(471048- ) .....	52
D15	DECAL, MAIN DRIVE SHAFT		C7	DRIVES, ROW-UNIT AND CROSS AUGER	
	(1243, 471048-634100) .....	90		(243, 244, 343) .....	56
B6	DECK PLATES.....	32	B19	DRIVES, ROW-UNIT AND CROSS AUGER	
D24	DRIVE SHAFT DECAL			(444, 543, 546, 642) ( -332700) .....	46
	(444) ( -640500) .....	100	B21	DRIVES, ROW-UNIT AND CROSS AUGER	
D15	DRIVE SHAFT SHIELD, MAIN			(444, 543, 546, 642)( -332700) .....	48
	(1243, 471048-634100) .....	90	C1	DRIVES, ROW-UNIT AND CROSS AUGER	
D15	DRIVE SHAFT SHIELD, MAIN			(444, 543, 546, 643)( -332701) .....	50
	(443, 444, 543, 546) .....	90	C3	DRIVES, ROW-UNIT AND CROSS AUGER	
D15	DRIVE SHAFT SHIELD, MAIN			(444, 543, 546, 643)(332701- ) .....	52
	(642, 643, 644, 645, 842, 843, 844).....	90	C1	DRIVES, ROW-UNIT AND CROSS AUGER	
E11	DRIVE SHAFT SUPPORT (244) .....	112		(644, 645, 843)( -332701) .....	50
D15	DRIVE SHAFT, DECAL		C3	DRIVES, ROW-UNIT AND CROSS AUGER	
	(1243, 471048-643100) .....	90		(644, 645, 843)(332701- ).....	52
D15	DRIVE SHAFT, DECAL		C1	DRIVES, ROW-UNIT AND CROSS AUGER	
	(443, 444, 543, 546) .....	90		(844)(380601- ) .....	50
D15	DRIVE SHAFT, DECAL		C3	DRIVES, ROW-UNIT AND CROSS AUGER	
	(642, 643, 644, 645, 842, 843, 844).....	90		(844)(380601- ).....	52
E5	DRIVE SHAFT, HEADER - SIDEHILL		C1	DRIVES, ROW-UNITS AND CROSS AUGER	
	( -615250).....	106		(1243)(471048- ) .....	50
E7	DRIVE SHAFT, HEADER - SIDEHILL - WEASLER		C5	DRIVES,ROW-UNIT & CROSS AUGER (SLOWDOWN)	
	(R.H. ILLUSTRATED) (645251- ) (444) .....	108		(444,543,546,643,644,645,843,844,1243) .....	54
E9	DRIVE SHAFT, HEADER - SIDEHILL - WEASLER				
	(643, 644, 843, 844) (645251- ) .....	110		<b>E</b>	
E6	DRIVE SHAFT, HEADER, SH, WALTERSCHIED		C18	EXTENSION, CROSS AUGER (1243) .....	67
	(615251-640500) .....	107	C20	EXTENSION, CROSS AUGER (1243) .....	69
D25	DRIVE SHAFT, MAIN (9500SH CONV.)		B3	EXTENSIONS, CENTER GATHERER SHIELD .....	28
	(R.H.) .....	101			
D17	DRIVE SHAFT, MAIN, AND COUPLER .....	92		<b>F</b>	
D19	DRIVE SHAFT, MAIN, AND COUPLER .....	94	C18	FILLER, ROW-UNIT DR, CROSS AUGER (1243) .....	67
D21	DRIVE SHAFT, MAIN, AND COUPLER		C20	FILLER, ROW-UNIT DR, CROSS AUGER (1243) .....	69
	(1243 (635101- ) .....	96	C9	FILLER, ROW-UNIT DRIVE	
D17	DRIVE SHAFT, MAIN, AND COUPLER			(243, 244, 343) .....	58
	(433, 444, 546, 642 ( -635100) .....	92	C11	FILLER, ROW-UNIT DRIVE	
D19	DRIVE SHAFT, MAIN, AND COUPLER			(344, 443, 444, 543, 642, 643).....	60
	(433, 444, 546, 642 ( -635100) .....	94	C11	FILLER, ROW-UNIT DRIVE	
D21	DRIVE SHAFT, MAIN, AND COUPLER			(644, 645, 842, 843, 844) .....	60
	(443, 444, 546, 643 (635101- ) .....	96	C13	FLOOR, AUGER, SHIELD	
D17	DRIVE SHAFT, MAIN, AND COUPLER			(344, 443, 444, 543, 546) .....	62
	(543 ( -380600).....	92			

## ALPHABETICAL INDEX - CONTINUED

GRID		PAGE	GRID		PAGE
C15	FLOOR, AUGER, SHIELD (344, 443, 444, 543, 546) .....	64		L	
C13	FLOOR, AUGER, SHIELD (642, 643, 644, 842, 843, 844) .....	62	D9	LIGHT, MARKER, HARNESS .....	82
C15	FLOOR, AUGER, SHIELD (642, 643, 644, 842, 843, 844) .....	64	D10	LIGHTS, MARKER .....	83
C18	FLOOR, CROSS AUGER (1243) .....	67		M	
C20	FLOOR, CROSS AUGER (1243) .....	69	D24	MAIN DRIVE COUPLER & SHIELD -6620SH CONV (444) ( -640500) .....	100
B6	FRAME, ROW-UNIT .....	32	E1	MAIN DRIVE COUPLER 643 SIDEHILL (6620SH CONV.) ( -640500) .....	102
	G		D24	MAIN DRIVE SHAFT (6620 SH CONV.) (444) ( -640500) .....	100
B18	GATHERER CHAIN AND SPROCKETS .....	45	D25	MAIN DRIVE SHAFT (9500SH CONV.) (R.H.) .....	101
A13	GATHERER POINTS ( -466450) .....	12	D21	MAIN DRIVE SHAFT AND COUPLER (1243 (635101- ) .....	96
A15	GATHERER POINTS (466451- ) .....	14	D17	MAIN DRIVE SHAFT AND COUPLER (443, 444, 546, 642 ( -635100) .....	92
A21	GATHERER POINTS (466451- ) .....	20	D19	MAIN DRIVE SHAFT AND COUPLER (443, 444, 546, 642 ( -635100) .....	94
A24	GATHERER POINTS, CENTER (1243) .....	24	D21	MAIN DRIVE SHAFT AND COUPLER (443, 444, 546, 643 (635101- ) .....	96
A24	GATHERER POINTS, CENTER (243, 244, 343, 344, 443, 444) .....	24	D17	MAIN DRIVE SHAFT AND COUPLER (543 ( -380600) .....	92
A24	GATHERER POINTS, CENTER (543, 546, 643, 644, 645, 843, 844) .....	24	D19	MAIN DRIVE SHAFT AND COUPLER (543 ( -380600) .....	94
A17	GATHERER POINTS, CENTER (642 AND 842) .....	16	D17	MAIN DRIVE SHAFT AND COUPLER (543 (620801-635100) .....	92
A23	GATHERER POINTS, CENTER (642 AND 842) .....	23	D19	MAIN DRIVE SHAFT AND COUPLER (543 (620801-635100) .....	94
A10	GATHERER SHEETS ( -380600) .....	9	D17	MAIN DRIVE SHAFT AND COUPLER (642, 842 ( -332700) .....	92
A11	GATHERER SHEETS, OUTER (380601- ) .....	10	D19	MAIN DRIVE SHAFT AND COUPLER (642, 842 ( -332700) .....	94
B5	GATHERER SHIELDS (642 AND 842) .....	30	D17	MAIN DRIVE SHAFT AND COUPLER (643, 644, 645 ( -635100) .....	92
B1	GATHERER SHIELDS, CENTER .....	26	D19	MAIN DRIVE SHAFT AND COUPLER (643, 644, 645 ( -635100) .....	94
B13	GEAR HOUSING .....	40	D21	MAIN DRIVE SHAFT AND COUPLER (644, 645, 843, 844 (635101- ) .....	96
B15	GEAR HOUSING .....	42	D17	MAIN DRIVE SHAFT AND COUPLER (842, 843, 844, 1243 ( -635100) .....	92
	H		D19	MAIN DRIVE SHAFT AND COUPLER (842, 843, 844, 1243 ( -635100) .....	94
D9	HARNESS, MARKER LIGHT .....	82	D15	MAIN DRIVE SHAFT SHIELD (1243, 471048-634100) .....	90
D11	HARNESS, STUBBLE LIGHT ( -640300) .....	84	D15	MAIN DRIVE SHAFT SHIELD (443, 444, 543, 546) .....	90
D12	HARNESS, STUBBLE LIGHT (640301- ) .....	86	D15	MAIN DRIVE SHAFT SHIELD (642, 643, 644, 645, 842, 843, 844) .....	90
E5	HEADER DRIVE SHAFT - SIDEHILL ( -615250) .....	106	D23	MAIN DRIVE SHAFT, COUPLER, AND SHIELD .....	98
E9	HEADER DRIVE SHAFT - SIDEHILL - WEASLER (643, 644, 843, 844) (645251- ) .....	110	E3	MAIN DRIVE SHAFT, COUPLER, SIDEHILL (643, 644, 843, 844) (645251- ) .....	104
E7	HEADER DRIVE SHAFT - SIDEHILL - WEASLER (R.H. ILLUSTRATED) (645251- ) (444) .....	108	E3	MAIN DRIVE SHAFT, SIDEHILL (643, 644, 843, 844) (645251- ) .....	104
E6	HEADER DRIVE SHAFT, SH, WALTERSCHEID (615251-640500) .....	107	E1	MAIN DRIVE SHAFT, 643 SIDEHILL (6620SH CONV.) ( -640500) .....	102
	K		E1	MAIN DRIVE SHIELD 643 SIDEHILL (6620SH CONV.) ( -640500) .....	102
E19	KEY STOCK, METRIC KIT .....	120	C23	MAIN FRAME AND BACK SHEETS .....	72
E19	KIT, METRIC KEY STOCK .....	120	D1	MAIN FRAME AND BACK SHEETS (642, 643, 644, 645, 842, 843) .....	74
B10	KNIFE STALK ROLL AND BARREL .....	36	D5	MAIN FRAME AND BACK SHEETS (844) .....	78
B6	KNIFE, TRASH .....	32	D14	MAIN FRAME AND SHIELDS (243, 244, 343) .....	88

## ALPHABETICAL INDEX - CONTINUED

GRID		PAGE	GRID		PAGE
D7	MAIN FRAME SHIELDS (1243, 471048- ) .....	80	C1	ROW-UNIT AND CROSS AUGERS DRIVES (644, 645, 843)( -332701) .....	50
D7	MAIN FRAME SHIELDS (844) .....	80	B6	ROW-UNIT FRAME AND DECK PLATES .....	32
D5	MAIN FRAME, AND BACK SHEETS (1243, 471048- ) .....	78	B12	ROW-UNIT SLIP CLUTCH .....	38
D9	MARKER LIGHT HARNESS .....	82	C1	ROW-UNITS AND CROSS AUGER DRIVES (1243)(471048- ) .....	50
D10	MARKER LIGHTS .....	83			
E19	METRIC KEY STOCK KIT .....	120		<b>S</b>	
	<b>O</b>		E15	SAFETY AND INSTRUCTIONAL DECALS .....	116
A11	OUTER GATHERER SHEETS (380601- ) .....	10	E5	SHAFT, HEADER DRIVE - SIDEHILL ( -615250) .....	106
	<b>P</b>		E6	SHAFT, HEADER DRIVE, SH, WALTERSCHIED (615251-640500) .....	107
C18	PADDLE, CROSS AUGER (1243) .....	67	D24	SHAFT, MAIN DRIVE (6620 SH CONV.) (444) ( -640500) .....	100
C20	PADDLE, CROSS AUGER (1243) .....	69	D25	SHAFT, MAIN DRIVE (9500SH CONV.) (R.H.) .....	101
B6	PLATES, DECK .....	32	E3	SHAFT, MAIN DRIVE, SIDEHILL (643, 644, 843, 844) (645251- ) .....	104
A17	POINTS, CENTER GATHERER (642 AND 842) .....	16	B8	SHAFT, STALK ROLL .....	34
A23	POINTS, CENTER GATHERER (642 AND 842) .....	23	C23	SHEETS, BACK, AND MAIN FRAME .....	72
A13	POINTS, GATHERER ( -466450) .....	12	D1	SHEETS, BACK, AND MAIN FRAME (642, 643, 644, 645, 842, 843) .....	74
A15	POINTS, GATHERER (466451- ) .....	14	A10	SHEETS, GATHERER ( -380600) .....	9
A21	POINTS, GATHERER (466451- ) .....	20	A11	SHEETS, OUTER GATHERER (380601- ) .....	10
A24	POINTS, GATHERER, CENTER (1243) .....	24	D23	SHIELD AND COUPLER, MAIN DRIVE SHAFT .....	98
A24	POINTS, GATHERER, CENTER (243, 244, 343, 344, 443, 444) .....	24	B3	SHIELD EXTENSIONS, CENTER GATHERER .....	28
A24	POINTS, GATHERER, CENTER (543, 546, 643, 644, 645, 843, 844) .....	24	C21	SHIELD, AUGER (243, 244, 343, 344, 443, 444) .....	70
	<b>R</b>		C21	SHIELD, AUGER (543, 546, 643, 644, 645, 843, 1243) .....	70
B8	ROLL, STALK .....	34	C11	SHIELD, AUGER DRIVE (344, 443, 444, 543, 642, 643) .....	60
C5	ROW-UNIT & CROSS AUGER DRIVES (SLOWDOWN) (444,543,546,643,644,645,843,844,1243) .....	54	C11	SHIELD, AUGER DRIVE (644, 645, 842, 843, 844) .....	60
C3	ROW-UNIT AND CROSS AUGER DRIVES (1243)(471048- ) .....	52	C13	SHIELD, AUGER FLOOR (344, 443, 444, 543, 546) .....	62
C7	ROW-UNIT AND CROSS AUGER DRIVES (243, 244, 343) .....	56	C15	SHIELD, AUGER FLOOR (344, 443, 444, 543, 546) .....	64
B19	ROW-UNIT AND CROSS AUGER DRIVES (444, 543, 546, 642) ( -332700) .....	46	C13	SHIELD, AUGER FLOOR (642, 643, 644, 842, 843, 844) .....	62
B21	ROW-UNIT AND CROSS AUGER DRIVES (444, 543, 546, 642)( -332700) .....	48	C15	SHIELD, AUGER FLOOR (642, 643, 644, 842, 843, 844) .....	64
C1	ROW-UNIT AND CROSS AUGER DRIVES (444, 543, 546, 643)( -332701) .....	50	C18	SHIELD, CROSS AUGER (1243) .....	67
C3	ROW-UNIT AND CROSS AUGER DRIVES (444, 543, 546, 643)(332701- ) .....	52	C20	SHIELD, CROSS AUGER (1243) .....	69
B19	ROW-UNIT AND CROSS AUGER DRIVES (643, 644, 645, 842, 843) ( -332700) .....	46	C9	SHIELD, CROSS AUGER DRIVE (243, 244, 343) .....	58
B21	ROW-UNIT AND CROSS AUGER DRIVES (643, 644, 645, 842, 843)( -332700) .....	48	B5	SHIELD, GATHERER (642 AND 842) .....	30
C3	ROW-UNIT AND CROSS AUGER DRIVES (644, 645, 843)(332701- ) .....	52	D15	SHIELD, MAIN DRIVE SHAFT (1243, 471048-634100) .....	90
C1	ROW-UNIT AND CROSS AUGER DRIVES (844)(380601- ) .....	50	D15	SHIELD, MAIN DRIVE SHAFT (443, 444, 543, 546) .....	90
C3	ROW-UNIT AND CROSS AUGER DRIVES (844)(380601- ) .....	52	D15	SHIELD, MAIN DRIVE SHAFT (642, 643, 644, 645, 842, 843, 844) .....	90
			D25	SHIELD, MAIN DRIVE SHAFT (9500SH CONV.) (R.H.) .....	101
			E3	SHIELD, MAIN DRIVE SHAFT, SIDEHILL (643, 644, 843, 844) (645251- ) .....	104
			E1	SHIELD, MAIN DRIVE 643 SIDEHILL (6620SH CONV.) ( -640500) .....	102
			E14	SHIELD, WHEEL (243, 343) (380601- ) .....	115

## ALPHABETICAL INDEX - CONTINUED

GRID		PAGE	GRID		PAGE
E14	SHIELD, WHEEL (642, 842).....	115	D11	STUBBLE LIGHT HARNESS ( -650300) .....	84
D3	SHIELDS AND STRIPPER (344, 443, 444, 543, 546) .....	76	D12	STUBBLE LIGHT HARNESS (640301- ) .....	86
D3	SHIELDS AND STRIPPER (642, 643, 644, 645, 842, 843) .....	76	D12	STUBBLE LIGHTS (640301- ) .....	86
C13	SHIELDS, AUGER SLOWDOWN .....	62	E11	SUPPORT, DRIVE SHAFT (244) .....	112
C15	SHIELDS, AUGER SLOWDOWN .....	64		T	
C17	SHIELDS, AUGER SLOWDOWN (1243) .....	66	B6	TRASH KNIFE .....	32
C19	SHIELDS, AUGER SLOWDOWN (1243) .....	68		W	
B1	SHIELDS, CENTER GATHERER .....	26	E6	WALTERSCHIED HEADER DRIVE SHAFT, S.H. (615251-640500) .....	107
D7	SHIELDS, MAIN FRAME (1243, 471048- ) .....	80	E7	WEASLER - HEADER DRIVE SHAFT - SIDEHILL (R.H. ILLUSTRATED) (645251- ) (444) .....	108
D7	SHIELDS, MAIN FRAME (844) .....	80	E13	WHEEL SHIELDS (243, 343) ( -380600) .....	114
E13	SHIELDS, WHEEL (243, 343) ( -380600) .....	114	E14	WHEEL SHIELDS (243, 343) (380601- ) .....	115
E13	SHIELDS, WHEEL (244, 344) .....	114	E13	WHEEL SHIELDS (244, 344) .....	114
E5	SIDEHILL - HEADER DRIVE SHAFT ( -615250) .....	106	E14	WHEEL SHIELDS (642, 842) .....	115
E7	SIDEHILL - WEASLER - HEADER DRIVE SHAFT (R.H. ILLUSTRATED) (645251- ) (444) .....	108			
E9	SIDEHILL - WEASLER - HEADER DRIVE SHAFT (643, 644, 843, 844) (645251- ) .....	110			
E3	SIDEHILL CONVERSION, MAIN DRIVE SHAFT (643, 644, 843, 844) .....	104			
D25	SIDEHILL MAIN DRIVE SHAFT CONVERSION (R.H.) .....	101			
E6	SIDEHILL-HEADER DRIVE SHAFT,WALTERSCHIED (615251-640500) .....	107			
E1	SIDEHILL-6620 CONVERSION-MAIN DRIVE (643) .....	102			
B12	SLIP CLUTCH, ROW-UNIT .....	38			
C5	SLOW DOWN, ROW-UNIT AND CROSS AUGER DRIVES .....	54			
C13	SLOWDOWN SHIELDS, AUGER .....	62			
C15	SLOWDOWN SHIELDS, AUGER .....	64			
C17	SLOWDOWN, AUGER SHIELDS & SPROCKETS (1243) .....	66			
C19	SLOWDOWN, AUGER SHIELDS & SPROCKETS (1243) .....	68			
C18	SPROCKET, CROSS AUGER (1243) .....	67			
C20	SPROCKET, CROSS AUGER (1243) .....	69			
C17	SPROCKETS, AUGER SLOWDOWN (1243) .....	66			
C19	SPROCKETS, AUGER SLOWDOWN (1243) .....	68			
B18	SPROCKETS, GATHERER CHAIN .....	45			
B10	STALK ROLL BARREL .....	36			
B8	STALK ROLL SHAFT AND BARREL .....	34			
B10	STALK ROLL, KNIFE .....	36			
C18	STRAP, CROSS AUGER (1243) .....	67			
C20	STRAP, CROSS AUGER (1243) .....	69			
C18	STRIP, CROSS AUGER (1243) .....	67			
C20	STRIP, CROSS AUGER (1243) .....	69			
D3	STRIPPER AND SHIELDS (344, 443, 444, 543, 546) .....	76			
D3	STRIPPER AND SHIELDS (642, 643, 644, 645, 842, 843) .....	76			
D11	STUBBLE LIGHT ( -640300) .....	84			
D11	STUBBLE LIGHT CONNECTOR ( -650300) .....	84			



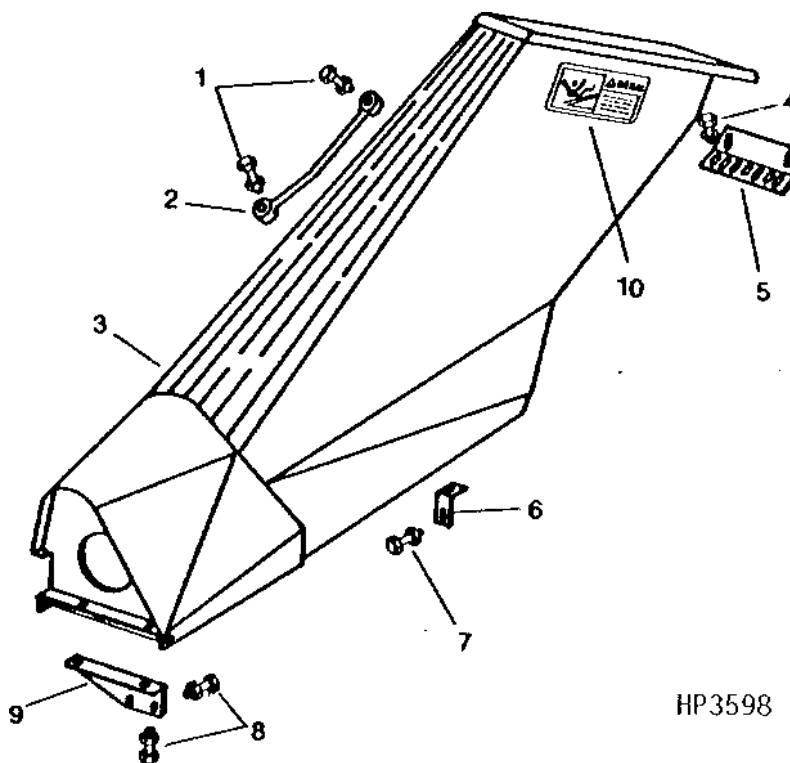
# A10

40 SERIES CORN HEADS

## OUTER GATHERER SHEETS

(-380600)

HP3598 -UN-01JAN94

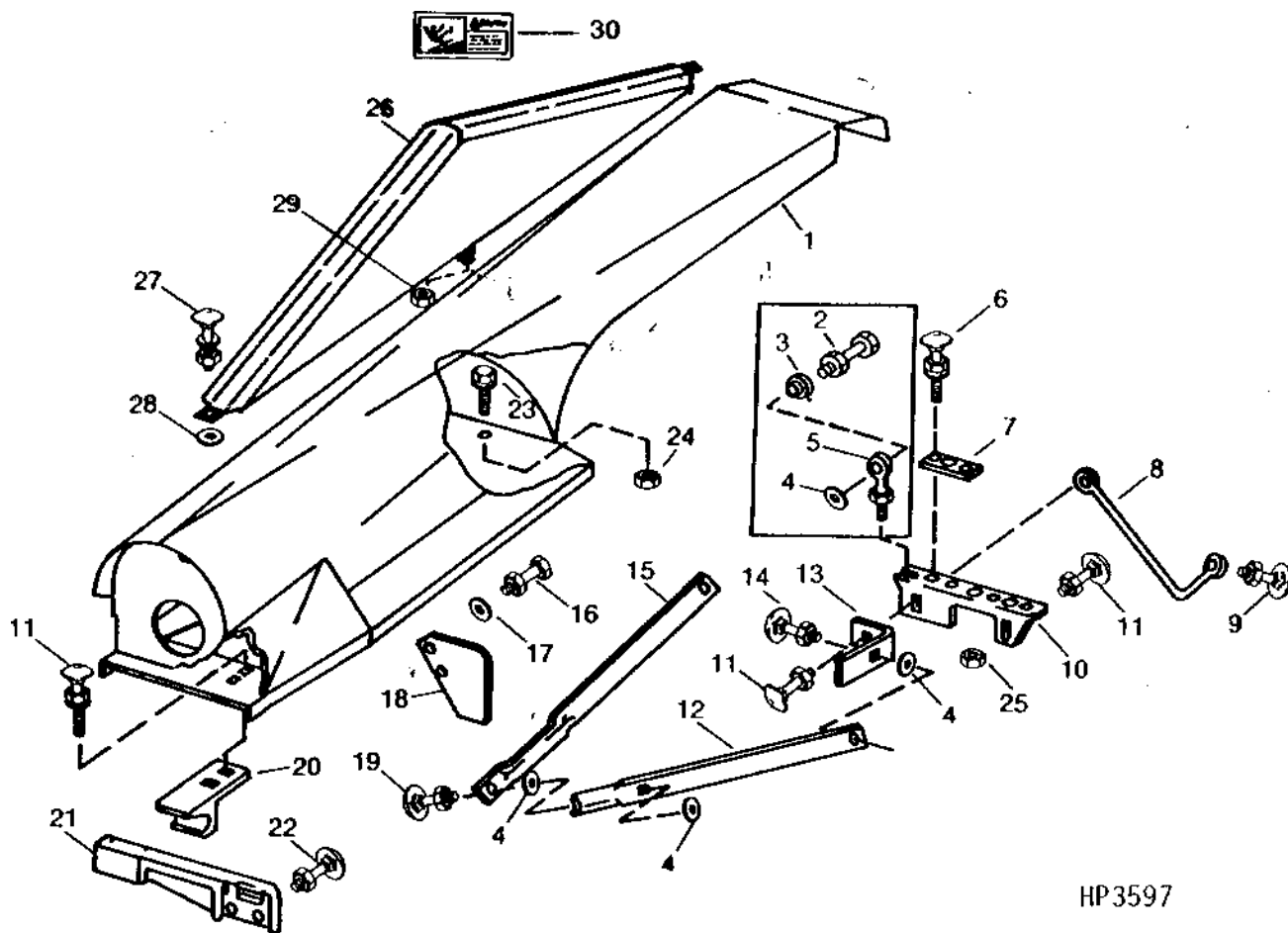


HP3598

KEY	PART NO.	PART NAME	QTY	SERIAL NO.	REMARKS
1	N10214	SELF-LOCKING SCREW	4	9.525 X 25.400 MM (3/8" X 1")	
	E55662	FLANGE NUT	4	9.525 MM (3/8")	
2	H83071	SUPPORT	1		R.H. NO LONGER AVAILABLE
	H83072	SUPPORT	1		L.H.
3	AN102066	SHEET	1		R.H. (243, -300) (244, -2451) (343, -1651) (344, -926) (443, -1336) (444, -2551) (546, -500) (642, -400) (643, -1051) (644, -531) (645, -400) (842, -421) (843, -600) (SUB AH82434)
	AH82434	SHEET	1		R.H.
	AN102067	SHEET	1		L.H. (243, -300) (244, -2451) (343, -1651) (344, -926) (443, -1336) (444, -2551) (546, -500) (642, -400) (643, -1051) (644, -531) (645, -400) (842, -421) (843, -600) (SUB AH82435)
	AH82435	SHEET	1		L.H.
4	N10212	SELF-LOCKING SCREW	8	7.925 X 19.050 MM (5/16" X 3/4")	
	A22698	NUT	8	7.925 MM (5/16")	
5	N103853	SUPPORT	2		UPPER
6	N103909	CLIP	2		(NO LONGER AVAILABLE)
7	N14822	SELF-LOCKING SCREW	4	9.525 X 19.050 MM (3/8" X 3/4")	
	E55662	FLANGE NUT	4	9.525 MM (3/8")	
8	03H1500	BOLT	4	3/8" X 1"	
	E55662	FLANGE NUT	4	9.525 MM (3/8")	
9	N102198	SUPPORT	1		R.H., LOWER
	N102199	SUPPORT	1		L.H., LOWER
10	H126728	LABEL	2		"DANGER", (SUB H149059)
	H149059	SIGN	2		"DANGER", (SUB H151336)
	H151336	SIGN	2		"DANGER"

OUTER GATHERER SHEETS

(380601- )  
HP3597 -UN-01JAN94



HP3597