

1A2

4630 TRACTOR

RWP4097 -UN-01JAN94



JOHN DEERE 4630 TRACTOR

(SPECIFICATIONS AND DESIGN SUBJECT TO CHANGE WITHOUT NOTICE)

COPYRIGHT (C) 1996. DEERE & COMPANY. MOLINE, ILLINOIS. ALL RIGHTS RESERVED.

1A3

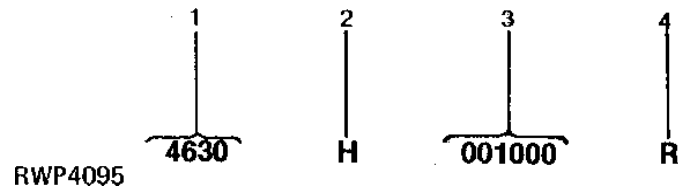
4630 TRACTOR

SERIAL NUMBERS

EACH 4630 TRACTOR HAS THE FOLLOWING SERIAL NUMBER PLATES: BASIC TRACTOR, ENGINE, SHORT BLOCK, ROLL-GARD, AND SOUND-GARD BODY.

TRACTOR SERIAL NUMBER

RWP4095 -UN-01JAN94



1. DESIGNATES TRACTOR MODEL
2. DESIGNATES TRANSMISSION TYPE

4630
H - QUAD-RANGE
P - POWER SHIFT
W - SYNCRO-RANGE

3. DESIGNATES TRACTOR SERIAL NUMBER
4. DESIGNATES TRACTOR MANUFACTURER

R - JOHN DEERE TRACTOR WORKS

RWP3900 -UN-01JAN94



THE BASIC TRACTOR SERIAL NUMBER PLATE IS LOCATED AT THE REAR OF THE TRANSMISSION CASE.

1A4

4630 TRACTOR

ENGINE SERIAL NUMBER

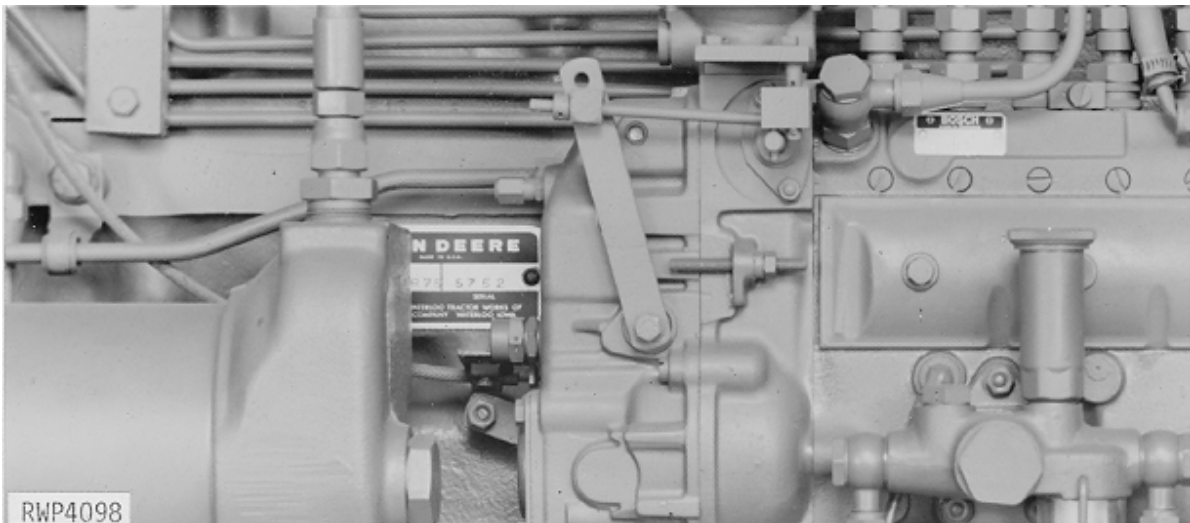
RWP4096 -UN-01JAN94

1 2 3 4 5 6 7
6 404 A R- 10 000000 R

RWP4096

- | | |
|---|----------------------------------|
| 1. DESIGNATES NUMBER OF CYLINDERS | 6 |
| 2. DESIGNATES CUBIC INCH DISPLACEMENT | 404 |
| 3. DESIGNATES TYPE OF AIR INTAKE SYSTEM | A - TURBOCHARGED AND INTERCOOLED |
| 4. DESIGNATES FACTORY USER | R - JOHN DEERE TRACTOR WORKS |
| 5. DESIGNATES VERSION | 10 - TENTH |
| 6. DESIGNATES ENGINE SERIAL NUMBER | 000000 |
| 7. DESIGNATES ENGINE MANUFACTURER | R - JOHN DEERE TRACTOR WORKS |

RWP4098 -UN-01JAN94



THE ENGINE SERIAL NUMBER PLATE IS LOCATED ON THE RIGHT-HAND SIDE OF THE ENGINE BEHIND THE INJECTION PUMP.

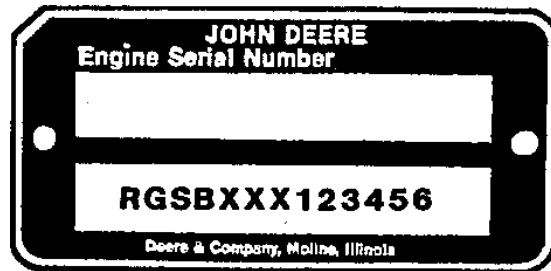
1A5

4630 TRACTOR

SHORT BLOCK SERIAL NUMBER PLATE

(S.B.S.N. -RGSB404882600)

RGP2856 -UN-01JAN94



RGP2856

A SHORT BLOCK SERIAL NUMBER PLATE PLUS 2-37H44 DRIVE SCREWS ARE USED TO ATTACH TO REPLACEMENT SHORT BLOCK ASSEMBLIES. THIS NUMBER WILL BE REFERRED TO WHEN NEW PARTS AFFECT THE SHORT BLOCK ASSEMBLY. THE PREVIOUS ENGINE SERIAL NUMBER SHOULD BE STAMPED INTO THE BLANK SPACE PROVIDED, AS A REFERENCE FOR YOUR DEALER.

- | | |
|---------------------------------------|----------------------------|
| 1. DESIGNATES ENGINE MANUFACTURER | RG - WATERLOO ENGINE WORKS |
| 2. DESIGNATES REPLACEMENT SHORT BLOCK | SB |
| 3. DESIGNATES CUBIC INCH | XXX- 404 |
| 4. DESIGNATES THE PRODUCTION DATE | 1234 |
| 5. DESIGNATES COMPONENT SEQUENCE | 56 |

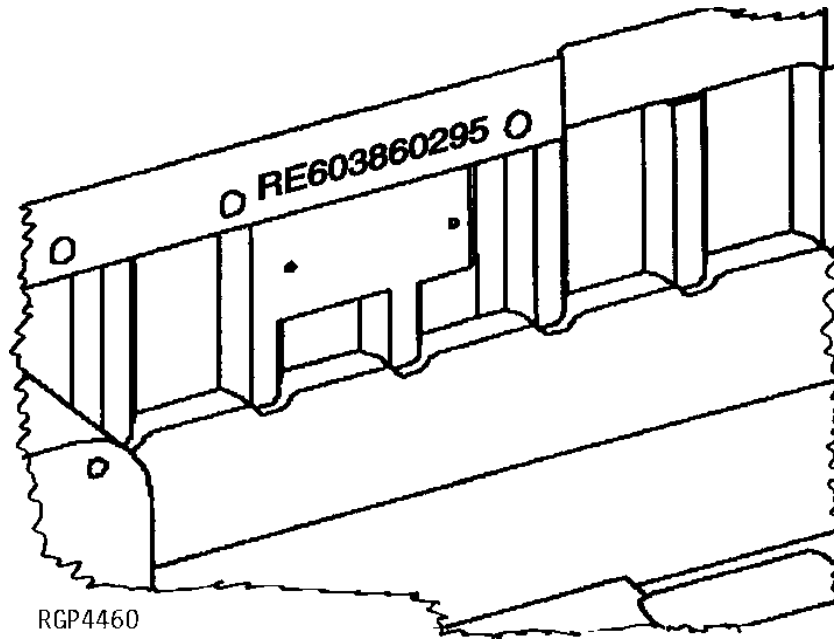
1A6

4630 TRACTOR

SHORT BLOCK SERIAL NUMBER IDENTIFICATION

(RE603860295-) (EXAMPLE ONLY)

RGP4460 -UN-04MAR95



SERIAL NUMBER STAMPED INTO CASTING OF BLOCK NEAR PREVIOUS SERIAL NUMBER PLATE.

EXAMPLE: RE603860295

- | | |
|-----------------------------------|---------|
| 1. DESIGNATES SERVICE PART NUMBER | RE60386 |
| 2. DESIGNATES MONTH ASSEMBLED | 02 |
| 3. DESIGNATES YEAR ASSEMBLED | 95 |

1A7

4630 TRACTOR

SOUND-GARD BODY OR ROLL-GARD SERIAL NUMBER

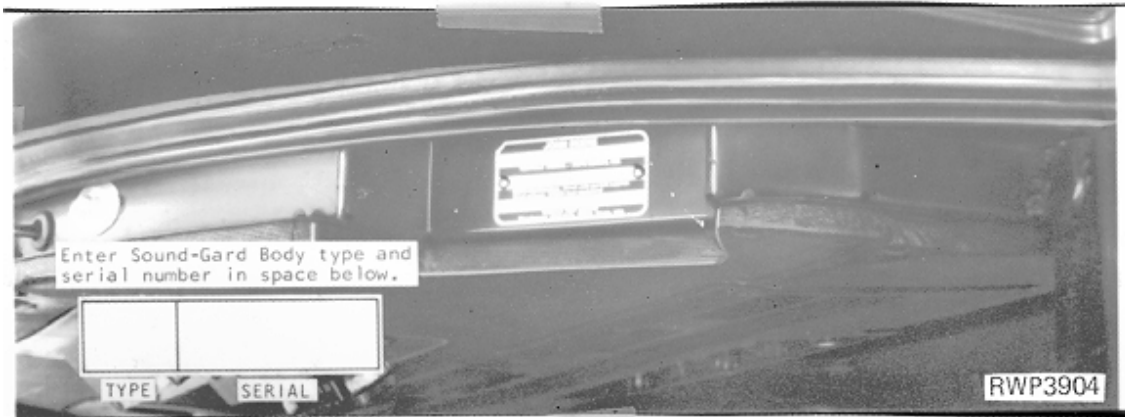
RWP3903 -UN-01JAN94



RWP3903

1. DESIGNATES TYPE
SG - SOUND-GARD BODY
RG - ROLL-GARD
2. DESIGNATES VERSION
1 - FIRST
3. DESIGNATES SERIAL NUMBER
4. DESIGNATES SOUND-GARD BODY MANUFACTURER - JOHN DEERE TRACTOR WORKS

RWP3904 -UN-01JAN94



THE SOUND-GARD BODY SERIAL NUMBER PLATE IS LOCATED ON THE WINDSHIELD WIPER MOTOR ACCESS DOOR HEADER.

THE ROLL-GARD SERIAL NUMBER IS STAMPED ON A PLATE LOCATED ON THE RIGHT-HAND FRONT POST.

1A8

4630 TRACTOR

SERIAL NUMBER LISTING INFORMATION

SERIAL NUMBER INFORMATION IS LISTED TO SHOW ON WHICH MACHINES EACH PART CAN BE USED; FOR EXAMPLE:

- THE PART CAN BE USED ON ALL MACHINES.
- 000000- THE PART CAN BE USED ON ALL MACHINES BEGINNING WITH THE SERIAL NUMBER LISTED.
- 000000 THE PART CAN BE USED ON ALL MACHINES UP TO AND INCLUDING THE SERIAL NUMBER LISTED.
- 000000-000000 THE PART CAN BE USED ON ALL MACHINES BETWEEN AND INCLUDING THE SERIAL NUMBERS LISTED.

- 15BV1- WHEN A MODEL NUMBER BEGINS WITH 15BV, 14HA, 15PP, 25SC, 2RC, 4RC, 15RS, 3CY, 2SP, OR 31SV, IT REFERS TO THE MODEL NUMBER OF THE BRAKE VALVE, HYDRAULIC ACCUMULATOR, HYDRAULIC PUMP, REMOTE CYLINDER SELECTIVE CONTROL VALVE FOR NO ROCKSHAFT, REMOTE CYLINDER SELECTIVE CONTROL VALVES, REMOTE CYLINDERS, REMOTE CYLINDERS WITH MECHANICAL STOPS, ROCKSHAFT CONTROL VALVE, STEERING CYLINDER, STEERING METERING PUMP, OR STEERING VALVE.

WHEN XXXXXX'S ARE LISTED IN PLACE OF A SERIAL NUMBER, A SERIAL NUMBER CHANGE WAS MADE BUT THE EXACT SERIAL NUMBER WAS NOT AVAILABLE WHEN THE CATALOG WAS PRODUCED.

MODEL NUMBERS

THE FOLLOWING COMPONENTS HAVE MODEL NUMBERS:

ACCUMULATOR	14HA1
BRAKE VALVE	12BV1
DIFFERENTIAL LOCK VALVE	11DL1
HYDRAULIC ACCUMULATOR	14HA1
HYDRAULIC PUMP (50 CM3) (3 IN3)	1PPA
HYDRAULIC PUMP (65 CM3 (4 IN3)	8PP4
POWER WEIGHT TRANSFER CONTROL VALVE	1DC2
REMOTE CYLINDER SELECTIVE CONTROL VALVE - SINGLE	23SC1
REMOTE CYLINDER SELECTIVE CONTROL VALVE - DUAL	23SC2
REMOTE CYLINDER SELECTIVE CONTROL VALVE - TRIPLE	24SC1
REMOTE CYLINDER (76 X 203MM (3" X 8"))	1RC3
REMOTE CYLINDER WITH MECHANICAL STOP (76 X 203MM (3" X 8"))	3RC2
ROCKSHAFT CONTROL VALVE	10RS1
STEERING CYLINDER	3CY1
STEERING METERING PUMP	2SP1
STEERING VALVE	14SV1

EACH OF THE ABOVE COMPONENTS HAS A MODEL NUMBER. WHEN THE DESIGN OF ONE OF THESE COMPONENTS IS CHANGED, THE MODEL NUMBER FOR THE NEWLY DESIGNED COMPONENT IS CHANGED.

1A9

4630 TRACTOR

DIRECTION ARROW

ARROWS ARE USED WITH ILLUSTRATIONS TO INDICATE THE FRONT OF THE UNIT. "RIGHT-HAND" AND "LEFT-HAND" SIDES ARE DETERMINED BY FACING IN THE DIRECTION OF MACHINE FORWARD TRAVEL.

BOX-ENCLOSED ILLUSTRATIONS

A KEY NUMBER, SHOWN IN THE PARTS LIST, IS ASSIGNED TO A BOX ENCLOSING ALL PARTS SOLD AS A SERVICE ASSEMBLY.

BOLT AND CAP SCREW STRENGTH IDENTIFICATION

U.S. CUSTOMARY DIMENSIONED PRODUCT: BOLTS AND CAP SCREWS REQUIRED TO HAVE HIGH-STRENGTH QUALITIES EQUIVALENT TO SAE GRADE 8 ARE IDENTIFIED THROUGHOUT THIS CATALOG BY THE DESCRIPTION HS SAE 8. ALL STANDARD BOLTS AND CAP SCREWS ARE SAE GRADE 5 OR LOWER.

METRIC DIMENSIONED PRODUCT: BOLTS AND CAP SCREWS REQUIRED TO HAVE HIGH-STRENGTH QUALITIES EQUIVALENT TO PROPERTY CLASS 10.9 ARE IDENTIFIED THROUGHOUT THIS CATALOG BY THE DESCRIPTION HS 10.9. ALL STANDARD BOLTS AND CAP SCREWS ARE PROPERTY CLASS 8.8 OR LOWER.

JDM REMANUFACTURED COMPONENTS

THE SERVICE PARTS LISTED IN THIS CATALOG ARE INTENDED FOR THE REPAIR OF ORIGINAL EQUIPMENT COMPONENTS. ALTHOUGH MOST SERVICE PARTS MAY BE USED TO REPAIR REMANUFACTURED COMPONENTS, THE REMANUFACTURING PROCESS MAY CHANGE PARTS SUFFICIENTLY SO THAT SERVICE PARTS ARE INADEQUATE OR NOT USABLE.

TRADEMARKS

THROUGHOUT THIS PARTS CATALOG, YOU WILL FIND THE FOLLOWING DEERE AND COMPANY TRADEMARKS:

HYDRACUSHIONED™
INVESTIGATOR™ II
PERSONAL-POSTURE™
QUAD-RANGE™
PERFORMANCE TRAK™ I
PERFORMANCE TRAK™ II

ROLL-GARD®
SOUND-GARD®
TORQ-GARD SUPREME®
HY-GARD®
QUIK-TATCH®

CHANGE INDICATOR LINE (MICROFICHE CATALOGS ONLY)

CHANGES AFFECTING THE ORDERING OF PARTS ARE IDENTIFIED BY VERTICAL LINES MARKED IN THE LEFT-HAND MARGIN OF REVISED PARTS LISTING IMAGES. A LINE IS ALSO AT THE LEFT-HAND EDGE OF THE SAME PART NUMBER IN THE NUMERICAL INDEX TO SHOW THE LOCATION OF REVISED INFORMATION.

1A10

4630 TRACTOR

QUANTITY COLUMN OR REMARKS COLUMN

GENERALLY THE QUANTITY SHOWN IS FOR THE ENTIRE TRACTOR AT ANY GIVEN LOCATION. THERE ARE EXCEPTIONS AS IN WHEEL HARDWARE WHERE ONLY ENOUGH IS SHOWN FOR ONE WHEEL.

THE FOLLOWING ABBREVIATIONS ARE USED IN THE REMARKS COLUMN:

NLR - NO LONGER REQUIRED

NA - NOT APPLICABLE

NLA - NO LONGER AVAILABLE

FI - FIELD INSTALLED

CA - CONVENIENCE ASSEMBLY

CA AND FI ARE OPTIONS THAT MUST BE ORDERED DIRECT FROM THE PRODUCING FACTORY.

1A11

4630 TRACTOR

SECTION INDEX

GENERAL INFORMATION	10
ENGINE	20
FUEL AND AIR	30
ELECTRICAL	40
POWER TRAIN	50
STEERING AND BRAKES	60
HYDRAULICS	70
WHEELS, FRONT AXLES, SHEET METAL	80
OPERATOR'S STATION	90
NUMERICAL INDEX	95

1A12

4630 TRACTOR

ALPHABETICAL INDEX

GRID		PAGE	GRID		PAGE
A					
5C19	ABSORBER, SHOCK, SEAT SUPPORT.....	90-38	2F16	ARM, WINDSHIELD WIPER	40-93E
5D3	ABSORBER, SHOCK, SEAT SUPPORT.....	90-48	2C23	ARMATURE, STARTER (DELCO-REMY)	40-40
3I15	ACCUMULATOR, BRAKE	60-46	2D5	ARMATURE, STARTER (JOHN DEERE) (DIESEL).....	40-45A
4D24	ADAPTER, IMPLEMENT QUICK COUPLER.....	70-70	5C24	ARMREST (PERSONAL-POSTURE SEAT)	90-44
5F17	ADHESIVE	90-113	1B12	ARMS, ROCKER	20-10
4G22	ADJUSTABLE FRONT AXLE TIE RODS	80-6	3C16	ARMS, SHIFTER SHAFTS.....	50-34
1D12	AFTERCOOLER	30-8	3F1	ARMS, TRANSMISSION	50-96
1E1	AID, COLD WEATHER STARTING (ELECTRIC)	30-22	5F4	ASH TRAY, SOUND-GARD BODY	90-100
1D24	AID, COLD WEATHER STARTING (MANUAL)	30-20	5F5	ASH TRAY, SOUND-GARD BODY	90-101
5B20	AIR CIRCULATION PRESSURIZER BLOWER, SGB.....	90-14	3D18	ASSEMBLY, CLUTCH PACK AND OIL PUMP (PST)	50-64
5B22	AIR CIRCULATION PRESSURIZER BLOWER, SGB.....	90-16	1B23	ASSEMBLY, COMPLETE BLOCK	20-17E
1D8	AIR CLEANER	30-2	4C18	ATTENUATOR, HYDRAULIC OIL	70-36
1D7	AIR CLEANER ELEMENT CLEANING GUN.....	30-1	4F14	AUXILIARY HYDRAULIC OUTLET KIT.....	70-112
2B8	AIR COMPRESSOR WIRING	40-1	4G18	AXLE, ADJUSTABLE TREAD FRONT	80-1
5B8	AIR CONDITIONING COMPRESSOR	90-2	4G19	AXLE, ADJUSTABLE TREAD FRONT	80-2
4C8	AIR CONDITIONING CONDENSER	70-26	3F19	AXLE, REAR.....	50-118
5B12	AIR CONDITIONING EVAPORATOR	90-6	B		
5B10	AIR CONDITIONING LINES.....	90-4	5C16	BACK, SEAT.....	90-34
4G14	AIR CONDITIONING O-RING KIT.....	70-137	5D1	BACKREST, SEAT, SUPPORT	90-46
5B12	AIR CONDITIONING RECEIVER-DEHYDRATOR	90-6	1C21	BAFFLE KIT, RADIATOR.....	20-36
5B14	AIR CONDITIONING RETROFIT KIT	90-7A	4H24	BAFFLE, HOOD	80-32
5B10	AIR CONDITIONING THERMOSTAT	90-4	4H11	BAFFLES, FRAME	80-20
5B12	AIR CONDITIONING THERMOSTAT SWITCH.....	90-6	1E5	BASE, FUEL FILTER (EARLY DESIGN).....	30-26
5B7	AIR CONDITIONING, BELT, COMPRESSOR.....	90-1	1E6	BASE, FUEL FILTER (LATE DESIGN)	30-27
5B7	AIR CONDITIONING, COMPRESSOR MOUNTING	90-1	4H18	BATTERY BOX.....	80-26
1D10	AIR INTAKE	30-5	4H20	BATTERY BOX (RG AND SGB)	80-28
5B16	AIR LOUVER	90-9	2B16	BATTERY CABLES	40-8
5B16	AIR LOUVER PANEL.....	90-9	4H18	BATTERY CLAMPS	80-26
5B15	AIR LOUVER, SOUND-GARD BODY	90-8	4H20	BATTERY CLAMPS (RG AND SGB)	80-28
1D10	AIR STACK.....	30-5	2B17	BATTERY, STORAGE	40-9
1D10	AIR STACK KIT	30-5	1C9	BEARING KIT, UNDERSIZED MAIN BEARING CRANKSHAFT (EARLY DESIGN).....	20-25A
2C10	ALTERNATOR	40-26	1C10	BEARING KIT, UNDERSIZED MAIN BEARING CRANKSHAFT (LATE DESIGN)	20-25B
2C11	ALTERNATOR	40-27	1C11	BEARINGS, MAIN.....	20-26
2C12	ALTERNATOR (EARLY DESIGN)	40-28	1C11	BEARINGS, MAIN THRUST.....	20-26
2C12	ALTERNATOR BRUSHES (EARLY DESIGN).....	40-28	5B7	BELT, COMPRESSOR.....	90-1
2C12	ALTERNATOR FAN (EARLY DESIGN).....	40-28	2C10	BELT, FAN AND ALTERNATOR DRIVE.....	40-26
2C14	ALTERNATOR KIT	40-30	2C11	BELT, FAN AND ALTERNATOR DRIVE.....	40-27
2C10	ALTERNATOR MOUNTING BRACKETS	40-26	5C5	BELT, SEAL (W/O HI CROP)	90-23A
2C11	ALTERNATOR MOUNTING BRACKETS	40-27	5C21	BELT, SEAT (PERSONAL-POSTURE SEAT).....	90-40
2C14	ALTERNATOR PULLEY.....	40-30	1C25	BELTS, FAN	20-40
2C12	ALTERNATOR REGULATOR (EARLY DESIGN)	40-28	3C2	BEVEL GEAR, DIFFERENTIAL (QRT AND SRT)	50-21A
2E21	AM RADIO (MOTOROLA)	40-76	3F13	BEVEL PINION, DIFFERENTIAL	50-110
2E22	AM-FM RADIO (MOTOROLA)	40-77	3C2	BEVEL PINION, DIFFERENTIAL (QRT AND SRT)	50-21A
2E13	ANALOG TACHOMETER	40-69C	3E8	BEVEL, PINION, DIFFERENTIAL	50-79
1E22	ANEROID ACTIVATOR, HYDRAULIC.....	30-44	5B16	BEZEL, AIR LOUVER	90-9
1F1	ANEROID CONTROL	30-50	4I9	BI-LINGUAL DECAL SET.....	80-42
1F2	ANEROID CONTROL	30-51	2F14	BLADE, WINDSHIELD WIPER	40-93C
1F4	ANEROID CONTROL	30-53	2F16	BLADE, WINDSHIELD WIPER	40-93E
2E24	ANTENNA BRACKET, CB RADIO.....	40-79	1B23	BLOCK ASSEMBLY, COMPLETE	20-17E
2F5	ANTENNA KIT, RADIO.....	40-86	1B15	BLOCK, CYLINDER	20-14
2F4	ANTENNA, FENDER MOUNTED, KIT	40-85	1B17	BLOCK, ENGINE SHORT (WITH OIL PUMP)	20-16
2F2	ANTENNA, RADIO KIT.....	40-82	1B19	BLOCK, ENGINE SHORT (WITHOUT OIL PUMP)	20-17A
3D14	ARM CLUTCH VALVE OPERATING (PST)	50-60	3G3	BLOCK, FRONT WHEEL DRIVE CYLINDER	50-128
4C24	ARM, LIFT.....	70-42	4E4	BLOCK, SWAY CONTROL	70-76
4D5	ARM, LOAD CONTROL	70-49	3C4	BLOCKER, TRANSMISSION (QRT AND SRT).....	50-22
4F19	ARM, REMOTE CYLINDER TRANSPORT	70-118	5B24	BLOWER FILTER CAPACITOR KIT	90-18
4C24	ARM, ROCKSHAFT CRANK	70-42	5B25	BLOWER MOTOR RESISTOR	90-19
3D1	ARM, SHIFTER.....	50-46	5B16	BLOWER SWITCH.....	90-9
3C15	ARM, SPEED CHANGE SHIFTER	50-33	5B18	BLOWER, PRESSURIZER.....	90-12
3C13	ARM, SPEED RANGE SHIFTER.....	50-31			
3C14	ARM, SPEED RANGE SHIFTER.....	50-32			
4G22	ARM, STEERING	80-6			
4G24	ARM, STEERING	80-8			
4G24	ARM, STEERING MOTOR SPINDLE	80-8			
2F14	ARM, WINDSHIELD WIPER	40-93C			

1A13

4630 TRACTOR

ALPHABETICAL INDEX - CONTINUED

<i>GRID</i>		<i>PAGE</i>	<i>GRID</i>		<i>PAGE</i>
5B20	BLOWER, PRESSURIZER, SGB	90-14	5F12	CABLE, SPEED-HOUR METER	90-108
5B22	BLOWER, PRESSURIZER, SOUND-GARD BODY	90-16	3E14	CABLES, TRANSMISSION CONTROL	50-86
5D9	BODY, REPLACEMENT SOUND-GARD	90-54	1B13	CAMSHAFT	20-11
1B9	BOLTS, HEAD	20-6	1B13	CAMSHAFT BUSHING	20-11
5F9	BOOT, SHIFTER ROD	90-105	1B13	CAMSHAFT, GEAR	20-11
4H18	BOX, BATTERY	80-26	5C12	CANOPY, ROLL-GARD, FOUR-POST	90-30
4H20	BOX, BATTERY (RG AND SGB)	80-28	5C7	CANOPY, ROLL-GARD, TWO-POST	90-24
5F18	BOX, TOOL	90-114	3H10	CAP PLUG ASSORTMENT KIT	60-14
5D23	BRACKET KIT, CONTROL SUPPORT	90-68	3I6	CAP PLUG ASSORTMENT KIT	60-36
2E24	BRACKET, CB RADIO ANTENNA	40-79	1D23	CAP, EXHAUST	30-19
2E24	BRACKET, CB RADIO MOUNTING	40-79	1E3	CAP, FUEL FILLER	30-24
5F8	BRACKET, FIRE EXTINGUISHER	90-104	1C19	CAP, RADIATOR	20-34
4H17	BRACKET, FRONT FENDER	80-25A	5B22	CAPACITOR, BLOWER MOTOR FILTER	90-16
5E5	BRACKET, SOUND-GARD BODY ROOF	90-74	2C1	CAPACITOR, NOISE SUPPRESSION	40-17
2F14	BRACKET, WINDSHIELD WIPER	40-93C	2B20	CAPACITOR, RADIO NOISE SUPPRESSION	40-12
2F16	BRACKET, WINDSHIELD WIPER	40-93E	2B22	CAPACITOR, RADIO NOISE SUPPRESSION	40-14
2E11	BRACKET,RADAR SENSOR	40-69A	2C2	CAPACITOR, RADIO NOISE SUPPRESSOR	40-18
2D15	BRACKETS, LAMP	40-50	3G5	CARRIER, FIRST PLANET PINION (PFWD)	50-130
3I15	BRAKE ACCUMULATOR	60-46	3F19	CARRIER, PLANET PINION	50-118
3I5	BRAKE FACING	60-35	3C6	CARRIER, PLANET PINION (QUAD-RANGE)	50-24
3I4	BRAKE FACINGS	60-34	3D24	CASE, TRANSMISSION (POWER SHIFT)	50-70
3I6	BRAKE OIL LINES (REAR)	60-36	3B23	CASE, TRANSMISSION (QRT AND SRT)	50-18
3I8	BRAKE OIL LINES (UPPER)	60-38	4H4	CAST DISK WHEELS	80-13
3I13	BRAKE PEDALS	60-44	2E24	CB RADIO MOUNTING KIT	40-79
3C8	BRAKE PISTON (QUAD-RANGE)	50-26	1D17	CENTER HOUSING, TURBOCHARGER (AIRESEARCH)	30-13
3C10	BRAKE PISTON HOUSING (QRT)	50-28	1D19	CENTER HOUSING, TURBOCHARGER (EARLY DESIGN)	30-15
3G6	BRAKE PISTON SEAL KIT, PFWD	50-131	1D21	CENTER HOUSING, TURBOCHARGER (LATE DESIGN)	30-17
3I5	BRAKE PLATE	60-35	4D21	CENTER LINK	70-66
3I4	BRAKE PLATES	60-34	4D23	CHAIN, IMPLEMENT SAFETY	70-69
3I10	BRAKE VALVE	60-40	4I8	CHART, GROUND SPEED	80-40
3I12	BRAKE VALVE OVERHAUL KIT	60-42	2E7	CIGAR LIGHTER	40-66
3E6	BRAKE, PLANETARY (POWER SHIFT)	50-77	2C1	CIRCUIT BREAKER (LESS SGB)	40-17
3E5	BRAKE, PLANETARY, FIRST (POWER SHIFT)	50-76	2B20	CIRCUIT BREAKER (SGB)	40-12
3E2	BRAKE, PLANETARY, FOURTH (POWER SHIFT)	50-73	2B22	CIRCUIT BREAKER (SGB)	40-14
3E4	BRAKE, PLANETARY, SECOND (POWER SHIFT)	50-75	2B24	CIRCUIT BREAKER SUPPORT KIT	40-15B
3E3	BRAKE, PLANETARY, THIRD (POWER SHIFT)	50-74	2G4	CIRCUIT BREAKER, ELECTRICAL OUTLET	40-104
4F2	BREAKAWAY COUPLER	70-99	2G8	CIRCUIT BREAKER, SUPPLEMENTARY WIRING	40-106
4F3	BREAKAWAY COUPLER	70-100	2C2	CIRCUIT BREAKERS AND RELAY (PFWD)	40-18
4F7	BREAKAWAY COUPLER (ISO CONVERSION KIT)	70-104	4H18	CLAMP, BATTERY	80-26
4F6	BREAKAWAY COUPLER (ISO)	70-103	4H20	CLAMP, BATTERY (RG AND SGB)	80-28
4F5	BREAKAWAY COUPLER OVERHAUL KIT	70-102	4G13	CLEAN-UP KIT, HYDRAULIC OIL	70-136
2B22	BREAKER CIRCUIT (SGB)	40-14	1D8	CLEANER, AIR	30-2
2C1	BREAKER, CIRCUIT (LESS SGB)	40-17	4E12	CLEVIS PIN, DRAWBAR	70-84
2C2	BREAKER, CIRCUIT (PFWD)	40-18	3D18	CLUTCH ASSEMBLY (PST)	50-64
2B20	BREAKER, CIRCUIT (SGB)	40-12	3C2	CLUTCH COLLAR (QRT AND SRT)	50-21A
2G1	BREAKER, CIRCUIT, REMOTE CONTROL	40-101	3E18	CLUTCH CONTROL, PTO (POWER SHIFT)	50-90
2G4	BREAKER, ELECTRICAL OUTLET CIRCUIT	40-104	3C22	CLUTCH CONTROL, TRANSMISSION	50-41
1B13	BUSHING, CAMSHAFT	20-11	3E11	CLUTCH CONTROL, TRANSMISSION DISCONNECT	50-82
2B20	BUSSBAR	40-12	3B11	CLUTCH DISK (QRT AND SRT)	50-6
2B22	BUSSBAR	40-14	3D21	CLUTCH DRUM (FRONT)	50-68
2C1	BUSSBAR	40-17	3C10	CLUTCH DRUM (QRT)	50-28
2C2	BUSSBAR, CIRCUIT BREAKER (PFWD)	40-18	3C8	CLUTCH DRUM (QUAD-RANGE)	50-26
2E7	BUTTON, HORN	40-66	3D23	CLUTCH DRUM (REAR)	50-69
2C17	BYPASS STARTER LABEL	40-33	3D13	CLUTCH HOUSING (POWER SHIFT)	50-58
1C15	BYPASS VALVE, OIL COOLER	20-30	3B9	CLUTCH HOUSING (QRT AND SRT)	50-3
2D4	BYPASS, STARTER LABEL	40-45	3B8	CLUTCH HOUSING (SYNCRO-RANGE)	50-2
			3B22	CLUTCH LEVER LINKAGE, PTO (QRT AND SRT)	50-17
			3B17	CLUTCH OIL PRESSURE REGULATING VALVE	50-12
			3D20	CLUTCH OIL PUMP ASSEMBLY	50-67
			3B10	CLUTCH PEDAL AND LINKAGE	50-4
			3D14	CLUTCH PEDAL AND LINKAGE (PST)	50-60
			3D16	CLUTCH SHAFT (POWER SHIFT)	50-62
			3D17	CLUTCH SHAFT (POWER SHIFT)	50-63
			3D19	CLUTCH SHAFT (POWER SHIFT)	50-66

C

5E9	CAB HEADLINERS	90-78
5B20	CAB PRESSURIZER BLOWER	90-14
5B22	CAB PRESSURIZER BLOWER	90-16
2B16	CABLE, BATTERY	40-8
1F1	CABLE, PUSH-PULL (FUEL SHUT-OFF)	30-50
1F2	CABLE, PUSH-PULL (FUEL SHUT-OFF)	30-51
1F3	CABLE, PUSH-PULL (FUEL SHUT-OFF)	30-52

1A14

4630 TRACTOR

ALPHABETICAL INDEX - CONTINUED

<i>GRID</i>		<i>PAGE</i>	<i>GRID</i>		<i>PAGE</i>
3D21	CLUTCH SHAFT (POWER SHIFT)	50-68	4C8	COOLER, HYDRAULIC OIL	70-26
3B15	CLUTCH SHAFT (QRT AND SRT)	50-10	5B16	COOLING TEMPERATURE SWITCH	90-9
3C6	CLUTCH SHAFT (QUAD-RANGE)	50-24	3C1	COUNTERSHAFT, TRANSMISSION	50-21
3B13	CLUTCH SHAFT (SYNCRO-RANGE)	50-8	4F9	COUPLER OVERHAUL KIT (ISO)	70-106
3B19	CLUTCH VALVE HOUSING (QRT AND SRT)	50-14	4F2	COUPLER, BREAKAWAY	70-99
3B19	CLUTCH VALVE SHIELD (QRT AND SRT)	50-14	4F3	COUPLER, BREAKAWAY	70-100
3C17	CLUTCH, CONTROL, TRANSMISSION	50-35	4F7	COUPLER, BREAKAWAY (ISO CONVERSION KIT)	70-104
3C19	CLUTCH, CONTROL, TRANSMISSION	50-37	4F6	COUPLER, BREAKAWAY (ISO)	70-103
3D19	CLUTCH, OIL MANIFOLD (POWER SHIFT)	50-66	4F12	COUPLER, FLEXIBLE OIL LINE	70-110
3D23	CLUTCH, PTO (POWER SHIFT)	50-69	4D24	COUPLER, IMPLEMENT QUICK	70-70
3B11	CLUTCH, PTO (QRT AND SRT)	50-6	4F7	COUPLER, ISO CONVERSION KIT	70-104
3C6	CLUTCH, QUAD-RANGE	50-24	4B7	COUPLER, MAIN PUMP DRIVE	70-1
3C7	CLUTCH, QUAD-RANGE (ASSEMBLED)	50-25	4E13	COUPLER, POWER WEIGHT TRANSFER	70-85
3D21	CLUTCH, TRANSMISSION, PACK	50-68	4G12	COUPLINGS, REUSABLE	70-135
3D23	CLUTCH, TRANSMISSION, PACK	50-69	3I13	COVER, BRAKE VALVE HOUSING	60-44
2D6	COIL, STARTER (JOHN DEERE) (DIESEL)	40-45B	3B11	COVER, CLUTCH (QRT AND SRT)	50-6
1E1	COLD WEATHER STARTING AID (ELECTRIC)	30-22	5F6	COVER, CONTROL SUPPORT	90-102
1D24	COLD WEATHER STARTING AID (MANUAL)	30-20	4E17	COVER, DUAL SELECTIVE CONTROL KIT	70-89
3C4	COLLAR, SYNCHRONIZER DISK (QRT AND SRT)	50-22	4F11	COVER, DUST (DIAGNOSTIC RECEPTACLE)	70-109
2D7	COMMUTATOR END FRAME, STARTER (JOHN DEERE) (DIESEL)	40-45C	4F2	COVER, DUST, BREAKAWAY COUPLER	70-99
1B23	COMPLETE BLOCK ASSEMBLY	20-17E	4F3	COVER, DUST, BREAKAWAY COUPLER	70-100
5B8	COMPRESSOR	90-2	4F12	COVER, DUST, BREAKAWAY COUPLER	70-110
5B8	COMPRESSOR CLUTCH	90-2	1D23	COVER, EXHAUST	30-19
5B8	COMPRESSOR COIL	90-2	5E1	COVER, PRESSURIZER	90-70
5B8	COMPRESSOR PULLEY	90-2	5E9	COVER, PRESSURIZER	90-78
5B8	COMPRESSOR SHAFT SEAL KIT	90-2	3F7	COVER, RETURN PORT	50-103
5B10	CONDENSER LINES	90-4	1B10	COVER, ROCKER ARM	20-8
5B11	CONDENSER LINES	90-5	4E17	COVER, ROCKSHAFT CONTROL VALVE HOUSING	70-89
4C8	CONDENSER, AIR CONDITIONING	70-26	4C20	COVER, ROCKSHAFT HOUSING	70-38
1B7	CONDITIONER, COOLANT	20-2	4C22	COVER, ROCKSHAFT HOUSING	70-40
1C3	CONNECTING RODS	20-21	4C25	COVER, ROCKSHAFT PISTON	70-43
1E15	CONNECTORS, FUEL INJECTION PUMP HOUSING	30-36	2D4	COVER, STARTER SOLENOID (JOHN DEERE)	40-45
2G10	CONNECTORS,ELECTRICAL	40-108	3H2	COVER, STEERING VALVE	60-5
2G12	CONNECTORS,ELECTRICAL	40-110	3G24	COVER, STEERING VALVE CYLINDER	60-2
2G14	CONNECTORS,ELECTRICAL	40-112	1C13	COVER, TIMING GEAR	20-28
2D24	CONSOLE LIGHT HOUSING, FOUR-POST ROLL-GA RD	40-59	3B24	COVER, TRANSMISSION CASE (FRONT)	50-19
2D24	CONSOLE LIGHT, FOUR-POST ROLL-GARD	40-59	3D25	COVER, TRANSMISSION CASE (FRONT)	50-71
5F10	CONSOLE, CONTROL	90-106	3F1	COVER, TRANSMISSION CONTROL VALVE	50-96
2G10	CONTAINER,ELECTRICAL PARTS	40-108	4D12	COVER, TRANSMISSION REAR	70-56
5F10	CONTROL CONSOLE	90-106	4D14	COVER, TRANSMISSION REAR	70-58
4D8	CONTROL LINKAGE, ROCKSHAFT	70-52	4E17	COVER, TRIPLE SELECTIVE CONTROL KIT	70-89
5D23	CONTROL SUPPORT BRACKET KIT	90-68	5F6	COWL	90-102
5F6	CONTROL SUPPORT COVER	90-102	4C24	CRANK, ROCKSHAFT	70-42
5F6	CONTROL SUPPORT, COVERS AND COWL	90-102	1C4	CRANKSHAFT	20-22
3C17	CONTROL TRANSMISSION SHIFTER	50-35	1C5	CRANKSHAFT	20-23
4D1	CONTROL VALVE	70-44	1C4	CRANKSHAFT DAMPER	20-22
4D3	CONTROL VALVE	70-46	1C7	CRANKSHAFT KIT, UNDERSIZE (CONNECTING ROD JOURNAL) (LATE DESIGN)	20-24A
3G9	CONTROL VALVE BRACKET (PFWD)	50-134	1C6	CRANKSHAFT KIT, UNDERSIZE CONNECTING ROD JOURNAL (EARLY DESIGN)	20-24
3G14	CONTROL VALVE OVERHAUL KIT (PFWD)	50-140	1C14	CRANKSHAFT OIL SEAL	20-29
3G10	CONTROL VALVE PARTS (PFWD)	50-136	1C14	CRANKSHAFT OIL SEAL HOUSING (REAR)	20-29
5B16	CONTROL VALVE, HEATER	90-9	1C4	CRANKSHAFT PULLEY	20-22
1F9	CONTROL, FOOT SPEED	30-58	1C8	CRANKSHAFT, UNDERSIZE MAIN BEARING (EARLIEST DESIGN)	20-25
4D6	CONTROL, LOAD SELECTOR	70-50	5C24	CUSHION, ARMREST (PERSONAL-POSTURE SEAT)	90-44
4D8	CONTROL, LOAD SELECTOR	70-52	5C21	CUSHION, BACKREST	90-40
3E18	CONTROL, PTO CLUTCH (POWER SHIFT)	50-90	5C16	CUSHION, SEAT	90-34
3E10	CONTROL, TRANSMISSION PARK LOCK	50-81	5C21	CUSHION, SEAT	90-40
3C19	CONTROL, TRANSMISSION SHIFTER	50-37	5C16	CUSHION, SEAT BACK	90-34
3C20	CONTROL, TRANSMISSION SHIFTER	50-38	1B15	CYLINDER BLOCK	20-14
3E12	CONTROL, TRANSMISSION SHIFTER	50-84	1B9	CYLINDER HEAD	20-6
2D22	CONTROL, TURN SIGNAL	40-57	1B9	CYLINDER HEAD GASKET	20-6
3F1	CONTROL, VALVE COVER	50-96	1D2	CYLINDER HEAD GASKET SET	20-42
4G11	CONVERSION KIT, REMOTE CYLINDER	70-134	4F21	CYLINDER HOSE IDENTIFICATION KIT	70-120
1B7	COOLANT CONDITIONER	20-2	1C3	CYLINDER LINER	20-21
1C17	COOLER, ENGINE OIL	20-32	1B7	CYLINDER LINER PACKING LUBRICANT	20-2

1A15

4630 TRACTOR

ALPHABETICAL INDEX - CONTINUED

<i>GRID</i>		<i>PAGE</i>	<i>GRID</i>		<i>PAGE</i>			
3G3	CYLINDER, FRONT WHEEL DRIVE.....	50-128	4E2	DRAWBAR, FRONT SUPPORT.....	70-73			
4F19	CYLINDER, REMOTE.....	70-118	4E4	DRAWBAR, REGULAR.....	70-76			
4F23	CYLINDER, REMOTE.....	70-122	4E8	DRAWBAR, WIDE SWING.....	70-80			
4G1	CYLINDER, REMOTE (HYDRAULIC STOP).....	70-124	4G19	DRIVE, FRONT WHEEL.....	80-2			
4G6	CYLINDER, REMOTE (HYDRAULIC STOP).....	70-130	4B7	DRIVE, HYDRAULIC PUMP.....	70-1			
4G4	CYLINDER, REMOTE (MECHANICAL STOP).....	70-128	1B14	DRIVE, TACHOMETER.....	20-12			
4G3	CYLINDER, REMOTE, OVERHAUL KIT.....	70-127	3E8	DRIVE, TRANSMISSION DIFFERENTIAL.....	50-79			
3G23	CYLINDER, STEERING VALVE.....	60-1	3E2	DRUM, CLUTCH (POWER SHIFT).....	50-73			
3H18	CYLINDER, STEERING VALVE.....	60-20	3C8	DRUM, CLUTCH (QUAD-RANGE).....	50-26			
D								
1C4	DAMPER, CRANKSHAFT.....	20-22	3C10	DRUM, HI-CLUTCH (QRT).....	50-28			
3D16	DAMPER, TORSIONAL.....	50-62	3C4	DRUM, SYNCHRONIZER (QRT AND SRT).....	50-22			
3D17	DAMPER, TORSIONAL.....	50-63	2E17	DUAL HORN.....	40-72			
5F12	DASH ASSEMBLY.....	90-108	2E16	DUAL HORN ASSEMBLY.....	40-71			
4I6	DECAL REFINISHING KIT.....	80-38	4H5	DUAL WHEELS.....	80-14			
4I9	DECAL, BI-LINGUAL.....	80-42	4F2	DUST COVER, BREAKAWAY COUPLER.....	70-99			
1C19	DEFLECTOR, FAN BLAST.....	20-34	4F3	DUST COVER, BREAKAWAY COUPLER.....	70-100			
5C16	DELUXE SEAT.....	90-34	4F12	DUST COVER, BREAKAWAY COUPLER.....	70-110			
5C17	DELUXE SEAT SUPPORT.....	90-36	E					
5C19	DELUXE SEAT SUSPENSION.....	90-38	1D22	ELBOW, EXHAUST.....	30-18			
4H4	DEMOUNTABLE RIMS.....	80-13	4C3	ELECTRIC DESTROKE SOLENOID.....	70-21A			
2F24	DETEND ROCKER SWITCH.....	40-99	2E17	ELECTRIC HORN.....	40-72			
4F11	DIAGNOSTIC RECEPTACLE.....	70-109	2E1	ELECTRIC REMOTE CONTROLLED SPOTLIGHT.....	40-60			
3F13	DIFFERENTIAL.....	50-110	2G18	ELECTRICAL CONNECTOR AND TERMINAL KIT.....	40-116			
3F15	DIFFERENTIAL.....	50-112	2G10	ELECTRICAL CONNECTORS.....	40-108			
3C2	DIFFERENTIAL DRIVE AND BEVEL PINION (QRT AND SRT).....	50-21A	2G12	ELECTRICAL CONNECTORS.....	40-110			
3F13	DIFFERENTIAL DRIVE SHAFT.....	50-110	2G14	ELECTRICAL CONNECTORS.....	40-112			
3F15	DIFFERENTIAL DRIVE SHAFT.....	50-112	2G10	ELECTRICAL CRIMPING TOOL.....	40-108			
3E8	DIFFERENTIAL DRIVE, TRANSMISSION.....	50-79	2G4	ELECTRICAL OUTLET CIRCUIT BREAKER.....	40-104			
3F17	DIFFERENTIAL KIT, ANTI-FRICTION.....	50-116	2G4	ELECTRICAL OUTLET PLUG.....	40-104			
3F11	DIFFERENTIAL LOCK OIL LINES.....	50-107	2G4	ELECTRICAL OUTLET SOCKET.....	40-104			
3F12	DIFFERENTIAL LOCK PEDAL.....	50-108	2G5	ELECTRICAL OUTLET SOCKET KIT.....	40-105			
3F12	DIFFERENTIAL LOCK RELEASE LINK.....	50-108	2G7	ELECTRICAL OUTLET SOCKET KIT.....	40-105B			
3F10	DIFFERENTIAL LOCK VALVE.....	50-106	2G5	ELECTRICAL OUTLET SOCKET, 7-TERMINAL.....	40-105			
2E8	DIMMER SWITCH.....	40-67	2G10	ELECTRICAL PARTS CONTAINER.....	40-108			
1B15	DIPSTICK, ENGINE OIL.....	20-14	2F24	ELECTRICAL REMOTE CONTROL.....	40-99			
4C20	DIPSTICK, TRANSMISSION.....	70-38	2F25	ELECTRICAL REMOTE CONTROL KIT.....	40-100			
4C22	DIPSTICK, TRANSMISSION.....	70-40	2G1	ELECTRICAL REMOTE CONTROL WIRING.....	40-101			
4D12	DIPSTICK, TRANSMISSION.....	70-56	2G2	ELECTRICAL REMOTE CONTROL WIRING KIT.....	40-102			
4D14	DIPSTICK, TRANSMISSION.....	70-58	2G1	ELECTRICAL REMOTE CONTROL WIRING RELAY.....	40-101			
3G10	DIRECTIONAL CONTROL VALVE (PFWD).....	50-136	2C4	ELECTRICAL SWITCHES AND WIRING.....	40-20			
4D3	DIRECTIONAL VALVE.....	70-46	2C5	ELECTRICAL SWITCHES AND WIRING (PFWD).....	40-21			
3I4	DISK, BRAKE.....	60-34	2G10	ELECTRICAL TERMINALS.....	40-108			
3D21	DISK, CLUTCH (POWER SHIFT).....	50-68	2G12	ELECTRICAL TERMINALS.....	40-110			
3B11	DISK, PTO CLUTCH (QRT AND SRT).....	50-6	2G14	ELECTRICAL TERMINALS.....	40-112			
3C4	DISK, TRANSMISSION SYNCHRONIZER (QRT AND SRT).....	50-22	2G18	ELECTRICAL TOOLS.....	40-116			
2D23	DOME LIGHT.....	40-58	2B9	ELECTRICAL WIRING.....	40-2			
2D24	DOME LIGHT (LATE DESIGN).....	40-59	2G10	ELECTRICAL WIRING.....	40-108			
5D19	DOOR HANDLE.....	90-64	2G12	ELECTRICAL WIRING.....	40-110			
5D17	DOOR HANDLE, SOUND-GARD BODY.....	90-62	2G14	ELECTRICAL WIRING.....	40-112			
5D21	DOOR HANDLE, SOUND-GARD BODY (LATE DESIGN).....	90-66	1D7	ELEMENT CLEANING GUN, AIR.....	30-1			
5D15	DOOR KIT.....	90-60	1C23	ELEMENT, COOLANT HEATER.....	20-38			
5D19	DOOR LATCH.....	90-64	3D4	ELEMENT, OIL FILTER, TRANSMISSION.....	50-49			
5D13	DOORS, SOUND-GARD BODY.....	90-58	3F4	ELEMENT, OIL FILTER, TRANSMISSION (PST).....	50-100			
4H10	DOUBLE FRONT WEIGHT.....	80-19	5F19	EMBLEM, SLOW MOVING VEHICLE.....	90-115			
4D21	DRAFT LINK.....	70-66	3H3	EMBLEM, STEERING WHEEL.....	60-6			
4E3	DRAFT LINK SUPPORT.....	70-75	3H4	EMBLEM, STEERING WHEEL.....	60-7			
4E12	DRAWBAR CLEVIS PIN KIT.....	70-84	3H12	EMBLEM, STEERING WHEEL.....	60-16			
4E1	DRAWBAR FRONT SUPPORT.....	70-72	3H14	EMBLEM, STEERING WHEEL.....	60-18			
4E6	DRAWBAR SUPPORT KIT.....	70-78	2D7	END FRAME, STARTER COMMUTATOR (JOHN DEERE) (DIESEL).....	40-45C			
4E10	DRAWBAR SUPPORT KIT.....	70-82	4G22	END, TIE ROD.....	80-6			
			1C23	ENGINE COOLANT HEATER.....	20-38			
			1C24	ENGINE COOLANT HEATER.....	20-39			
			1D2	ENGINE GASKET SET.....	20-42			

1A16

4630 TRACTOR

ALPHABETICAL INDEX - CONTINUED

<i>GRID</i>		<i>PAGE</i>	<i>GRID</i>		<i>PAGE</i>
1B8	ENGINE LIFT STRAPS	20-5	4F12	FLEXIBLE OIL LINE COUPLER	70-110
1B6	ENGINE OIL	20-1	2D19	FLOOD LAMPS	40-54
1C17	ENGINE OIL COOLER	20-32	5F1	FLOOR MAT	90-97
1B15	ENGINE OIL DIPSTICK	20-14	5F2	FLOOR MAT	90-98
1C16	ENGINE OIL FILTER	20-31	4D1	FLOW CONTROL VALVE	70-44
1B15	ENGINE OIL PRESSURE SENDER	20-14	4D3	FLOW CONTROL VALVE	70-46
1C15	ENGINE OIL PUMP	20-30	4E20	FLOW CONTROL VALVE, SCV	70-92
1B21	ENGINE OVERHAUL KIT	20-17C	1D24	FLUID, STARTING	30-20
1B17	ENGINE SHORT BLOCK (WITH OIL PUMP)	20-16	1E1	FLUID, STARTING	30-22
1B19	ENGINE SHORT BLOCK (WITHOUT OIL PUMP)	20-17A	1C4	FLYWHEEL	20-22
1C2	ENGINE UNDERHAUL KIT (6404) (STD BRGS)	20-20	1F9	FOOT SPEED CONTROL KIT	30-58
1B7	ENGINE VALVE STEM LUBRICANT	20-2	3E2	FOURTH PLANETARY BRAKE (POWER SHIFT)	50-73
2B9	ENGINE WIRING HARNESS	40-2	4H11	FRAME BAFFLES	80-20
2B15	ETHER SOLENOID WIRING HARNESS	40-7A	4H11	FRAME PLATE	80-20
1D25	ETHER STARTING AID KIT	30-21	4H11	FRAME, SIDE	80-20
2B15	ETHER SWITCH WIRING HARNESS	40-7A	4G18	FRONT AXLE HOUSING	80-1
5B12	EVAPORATOR, AIR CONDITIONING	90-6	4G22	FRONT AXLE KNEE	80-6
1D23	EXHAUST COVER	30-19	4G20	FRONT AXLE KNEE AND KNUCKLE	80-4
1D22	EXHAUST ELBOW	30-18	4G19	FRONT AXLE, ADJUSTABLE TREAD	80-2
1D22	EXHAUST MANIFOLD GASKETS	30-18	4H17	FRONT FENDER BRACKET	80-25A
1D22	EXHAUST MANIFOLDS	30-18	4H17	FRONT FENDER SUPPORT	80-25A
1B12	EXHAUST VALVES	20-10	4H17	FRONT FENDERS	80-25A
1D23	EXTENSION, MUFFLER	30-19	4H23	FRONT HOOD HANDLE KIT	80-31
5F8	EXTINGUISHER, FIRE	90-104	3G19	FRONT HYDRAULIC LINES (PFW)	50-145
F					
1E13	F.I.P. LUBE LINE (EARLY DESIGN)	30-34	2B9	FRONT LAMP WIRING	40-2
1E20	F.I.P. LUBE LINE (LATE DESIGN)	30-42	2B11	FRONT LAMPS	40-4
3I4	FACING, BRAKE	60-34	2D13	FRONT LAMPS	40-48
3I5	FACING, BRAKE	60-35	2D15	FRONT LAMPS	40-50
1C25	FAN	20-40	2D17	FRONT LAMPS	40-52
1C25	FAN BELTS	20-40	1C13	FRONT OIL SEAL	20-28
1C18	FAN BLAST DEFLECTOR KIT	20-33	4E2	FRONT SUPPORT, DRAWBAR	70-73
1C25	FAN PULLEY	20-40	4H10	FRONT WEIGHTS	80-19
1C19	FAN SHROUD	20-34	4H13	FRONT WEIGHTS	80-22
5C10	FENDER, ROLL-GARD	90-28	4H3	FRONT WHEEL BEARING KIT	80-12
5D5	FENDER, SOUND-GARD BODY	90-50	3G16	FRONT WHEEL DRIVE REPLACEMENT KIT	50-142
4H16	FENDERS	80-25	4H1	FRONT WHEELS	80-10
4H17	FENDERS, FRONT	80-25A	1E10	FUEL CHECK VALVE	30-31
5B24	FILTER CAPACITOR KIT, BLOWER MOTOR	90-18	1E5	FUEL FILTER	30-26
3D5	FILTER KIT, INCREASED OIL FILTRATION	50-50	1E6	FUEL FILTER	30-27
1C16	FILTER, ENGINE OIL	20-31	1E5	FUEL FILTER BASE (EARLY DESIGN)	30-26
1E5	FILTER, FUEL	30-26	1E6	FUEL FILTER BASE (LATE DESIGN)	30-27
1E6	FILTER, FUEL	30-27	1E7	FUEL FILTER BASE KIT (REPLACEMENT)	30-28
1D8	FILTER, PRIMARY	30-2	1E8	FUEL FILTER LINE	30-29
5B17	FILTER, RECIRCULATING	90-11	1E5	FUEL FILTER LINES (EARLY DESIGN)	30-26
1D8	FILTER, SECONDARY	30-2	1E6	FUEL FILTER LINES (LATE DESIGN)	30-27
3D4	FILTER, TRANSMISSION HYDRAULIC OIL	50-49	2E9	FUEL GAUGE	40-68
3F4	FILTER, TRANSMISSION OIL (PST)	50-100	1E13	FUEL INJECTION LINES (EARLY DESIGN)	30-34
1F7	FILTERS	30-56	1E20	FUEL INJECTION LINES (LATE DESIGN)	30-42
3F21	FINAL DRIVE KIT, HIGH PRESSURE ANGLE	50-120	1E19	FUEL INJECTION NOZZLE (EARLY DESIGN)	30-40
3F19	FINAL DRIVE SHAFT AND SUN PINION	50-118	1E23	FUEL INJECTION NOZZLE (LATE DESIGN)	30-46
5F8	FIRE EXTINGUISHER	90-104	1E13	FUEL INJECTION NOZZLES (EARLY DESIGN)	30-34
3E5	FIRST PLANETARY BRAKE (POWER SHIFT)	50-76	1E20	FUEL INJECTION NOZZLES (LATE DESIGN)	30-42
3H3	FIXED STEERING	60-6	1E13	FUEL INJECTION PUMP (EARLY DESIGN)	30-34
3H12	FIXED STEERING	60-16	1E20	FUEL INJECTION PUMP (LATE DESIGN)	30-42
3H7	FIXED STEERING PIPES	60-10	1E17	FUEL INJECTION PUMP GOVERNOR LEVERS AND CONTROLS	30-38
2C1	FLASHER, WARNING LAMP (LESS SGB)	40-17	1E15	FUEL INJECTION PUMP HOUSING CONNECTORS	30-36
2B20	FLASHER, WARNING LAMP (SGB)	40-12	1E9	FUEL INLET LINE (REPLACEMENT)	30-30
2B22	FLASHER, WARNING LAMP (SGB)	40-14	1F1	FUEL SHUT-OFF	30-50
2G6	FLASHING WARNING LAMP KIT	40-105A	1F2	FUEL SHUT-OFF	30-51
4G12	FLEXIBLE OIL LINE (BULK)	70-135	1F4	FUEL SHUT-OFF	30-53
			1E3	FUEL TANK	30-24
			1E3	FUEL TANK INSTALLATION KIT	30-24
			1E25	FUEL TRANSFER PUMP	30-49

1A17

4630 TRACTOR

ALPHABETICAL INDEX - CONTINUED

GRID		PAGE	GRID		PAGE
G					
1D2	GASKET SET, CYLINDER HEAD	20-42	2B11	HARNES, WIRING (ROLL-GARD AND SOUND-GARD BODY).....	40-4
1D2	GASKET SET, ENGINE	20-42	2B8	HARNES, WIRING AIR COMPRESSOR.....	40-1
1B9	GASKET, CYLINDER HEAD	20-6	2C5	HARNES, WIRING, INSTRUMENT PANEL	40-21
1B25	GASKET, OIL PAN.....	20-18	2C4	HARNES, WIRING, INSTRUMENT PANEL (PFWD)	40-20
1C13	GASKET, TIMING GEAR COVER GASKET	20-28	2G8	HARNES,WIRING, SUPPLEMENTARY WIRING KIT.....	40-106
3E1	GASKET, TRANSMISSION KIT	50-72	1B9	HEAD BOLTS	20-6
1D1	GASKET, WATER MANIFOLD	20-41	1B9	HEAD, CYLINDER	20-6
1C25	GASKET, WATER PUMP.....	20-40	5C7	HEADLINER, ROLL-GARD CANOPY	90-24
1D22	GASKETS, EXHAUST MANIFOLD	30-18	5C12	HEADLINER, ROLL-GARD CANOPY	90-30
1D12	GASKETS, INTAKE MANIFOLD	30-8	5E11	HEADLINER, SOUND-GARD BODY	90-81
2E9	GAUGE CLUSTER	40-68	5E9	HEADLINES, CAB	90-78
2E9	GAUGE, FUEL	40-68	2F7	HEADPHONES, RADIO	40-88
4E16	GAUGE, HYDRAULIC OIL PRESSURE	70-88	5B16	HEATER CONTROL VALVE	90-9
2E9	GAUGE, OIL PRESSURE	40-68	5C1	HEATER INSTALLATION KIT	90-20
3E19	GAUGE, TEMPERATURE SENDER	50-91	5C3	HEATER SUPPLY LINE.....	90-22
3E20	GAUGE, TEMPERATURE SENDER	50-92	1C24	HEATER, ENGINE COOLANT.....	20-39
2E9	GAUGE, VOLTMETER.....	40-68	1C23	HEATER, ENGINE, COOLANT	20-38
2E9	GAUGE, WATER TEMPERATURE	40-68	3D6	HEATER, OIL FILTER	50-51
3C19	GEAR SHIFT LEVER	50-37	5C1	HEATER, SOUND-GARD BODY	90-20
3E12	GEAR SHIFT LEVER	50-84	3C13	HIGH AND LOW SHIFTER SHAFT.....	50-31
3C15	GEAR SHIFTER SHAFT	50-33	3C14	HIGH AND LOW SHIFTER SHAFT.....	50-32
3E8	GEAR, BEVEL, DIFFERENTIAL	50-79	3F19	HIGH PRESSURE ANGLE FINAL DRIVE KIT	50-118
3F13	GEAR, BEVEL, DIFFERENTIAL	50-110	3F21	HIGH PRESSURE ANGLE FINAL DRIVE KIT	50-120
3F15	GEAR, BEVEL, DIFFERENTIAL	50-112	5D15	HINGE KIT	90-60
3C2	GEAR, BEVEL, DIFFERENTIAL (QRT AND SRT)	50-21A	4D21	HITCH, 3-POINT, CENTER LINK	70-66
1B13	GEAR, CAMSHAFT	20-11	4D21	HITCH, 3-POINT, DRAFT LINKS.....	70-66
3C1	GEAR, COUNTERSHAFT	50-21	4D24	HITCH, 3-POINT, QUICK COUPLER	70-70
1C5	GEAR, OIL PUMP DRIVE	20-23	5C23	HOLDER, OPERATOR'S MANUAL (LESS SGB).....	90-43
3D3	GEAR, OIL PUMP DRIVE	50-48	4H24	HOOD	80-32
3D8	GEAR, PTO DRIVE (SYNCRO-RANGE	50-53	4H23	HOOD HANDLE KIT, FRONT	80-31
3D2	GEAR, PTO DRIVE SHAFT AND	50-47	4H24	HOOD ORNAMENT	80-32
3D7	GEAR, PTO DRIVE SHAFT AND IDLER	50-52	4H24	HOOD, SUPPORTS AND BAFFLES	80-32
3D10	GEAR, PTO SHAFT AND DRIVE (1000 RPM).....	50-55	2E15	HORN	40-70
1C4	GEAR, STARTER RING.....	20-22	2E16	HORN ASSEMBLY, DUAL.....	40-71
3F8	GEARS, 1000 RPM PTO IDLER (POWER SHIFT)	50-104	2E7	HORN BUTTON	40-66
3C20	GEARSHIFT LEVER.....	50-38	2E16	HORN SWITCH	40-71
5E14	GLASS SEALS, SOUND-GARD BODY.....	90-84	2E17	HORN SWITCH	40-72
5E25	GLASS, REAR SLIDING	90-96	2E17	HORN, ELECTRIC	40-72
1E17	GOVERNOR LEVERS AND CONTROLS, FUEL INJECTION PUMP	30-38	2E16	HORN, ELECTRIC (12 VOLT) (HIGH NOTE).....	40-71
4H22	GRILLE	80-30	2E16	HORN, ELECTRIC (12 VOLT) (LOW NOTE)	40-71
2B16	GROUND CABLE, BATTERY	40-8	4F21	HOSE IDENTIFICATION KIT, REMOTE CYLINDER	70-120
5D7	GROUND LEAD, SOUND-GARD BODY	90-52	1C19	HOSE, RADIATOR	20-34
4I8	GROUND SPEED CHART.....	80-40	4F19	HOSE, REMOTE CYLINDER.....	70-118
3F9	GUARD, REAR PTO (POWER SHIFT).....	50-105	5C1	HOSES, HEATER, SOUND-GARD BODY	90-20
3D9	GUARD, REAR PTO (QRT AND SRT).....	50-54	3D14	HOUSING CLUTCH VALVE (PST)	50-60
3D8	GUARD, REAR PTO (SYNCRO-RANGE).....	50-53	5B22	HOUSING, BLOWER, CAB	90-16
1D7	GUN, AIR CLEANER ELEMENT CLEANING	30-1	3C10	HOUSING, BRAKE PISTON (QRT).....	50-28
H					
1F5	HAND SPEED CONTROL LINKAGE.....	30-54	3C8	HOUSING, BRAKE PISTON (QUAD-RANGE)	50-26
4H23	HANDLE KIT, FRONT HOOD	80-31	3D13	HOUSING, CLUTCH (POWER SHIFT)	50-58
4D21	HANDLE, CENTER LINK ADJUSTING	70-66	3B9	HOUSING, CLUTCH (QRT AND SRT)	50-3
5D19	HANDLE, DOOR.....	90-64	3B8	HOUSING, CLUTCH (SYNCRO-RANGE)	50-2
5D17	HANDLE, DOOR, SOUND-GARD BODY	90-62	3B13	HOUSING, CLUTCH OPERATING (PERMA-CLUTCH)	50-8
5D21	HANDLE, DOOR, SOUND-GARD BODY (LATE DESIGN).....	90-66	3B15	HOUSING, CLUTCH OPERATING (QRT AND SRT)	50-10
4D24	HANDLE, LIFT LINK ADJUSTING.....	70-70	3E20	HOUSING, CLUTCH REGULATING VALVE	50-92
4H24	HANDLE, TRACTOR MOUNTING	80-32	3B19	HOUSING, CLUTCH VALVE (QRT AND SRT).....	50-14
4I3	HANDLE, TRACTOR MOUNTING, RIGHT-HAND	80-36	2D24	HOUSING, CONSOLE LIGHT, FOUR-POST ROLL-G ARD	40-59
5F10	HANDREST.....	90-106	1C14	HOUSING, CRANKSHAFT OIL SEAL (REAR)	20-29
2B9	HARNES, WIRING	40-2	3F13	HOUSING, DIFFERENTIAL	50-110
			3F15	HOUSING, DIFFERENTIAL	50-112
			3F10	HOUSING, DIFFERENTIAL LOCK VALVE	50-106
			4G18	HOUSING, FRONT AXLE	80-1
			1C16	HOUSING, OIL FILTER	20-31
			3D11	HOUSING, OIL FILTER VALVE.....	50-56
			3F25	HOUSING, POWER FRONT WHEEL DRIVE	50-124
			3E19	HOUSING, PRES. REGULATING VALVE.....	50-91

1A18

4630 TRACTOR

ALPHABETICAL INDEX - CONTINUED

GRID		PAGE	GRID		PAGE
3F19	HOUSING, REAR AXLE.....	50-118	1B9	INSERTS, VALVE SEAT	20-6
4C20	HOUSING, ROCKSHAFT	70-38	2E3	INSTALLATION KIT, SPOTLIGHT	40-62
4C22	HOUSING, ROCKSHAFT	70-40	5F12	INSTRUMENT PANEL	90-108
4D1	HOUSING, ROCKSHAFT CONTROL VALVE	70-44	1D12	INTAKE MANIFOLD	30-8
4D3	HOUSING, ROCKSHAFT CONTROL VALVE	70-46	1D12	INTAKE MANIFOLD GASKETS	30-8
4E20	HOUSING, SELECTIVE CONTROL VALVE	70-92	1B12	INTAKE VALVES	20-10
4E22	HOUSING, SELECTIVE CONTROL VALVE	70-94	1D10	INTAKE, AIR	30-5
4E24	HOUSING, SELECTIVE CONTROL VALVE	70-96	3F4	INTAKE, TRANSMISSION OIL FILTER (PST)	50-100
4F2	HOUSING, SELECTIVE CONTROL VALVE	70-99	4F7	ISO COUPLER CONVERSION KIT	70-104
4F3	HOUSING, SELECTIVE CONTROL VALVE	70-100	4F9	ISO COUPLER OVERHAUL KIT	70-106
3F2	HOUSING, SHIFT VALVE	50-97	4F7	ISO COUPLER RECEPTACLE	70-104
2D5	HOUSING, STARTER DRIVE (JOHN DEERE) (DIESEL).....	40-45A	4F7	ISO TO JOHN DEERE COUPLER CONVERSION	70-104
3H18	HOUSING, STEERING VALVE	60-20	K		
3E16	HOUSING, TRANSMISSION CLUTCH VALVE.....	50-88	2E7	KEY, IGNITION.....	40-66
3E22	HOUSING, TRANSMISSION CONTROL VALVE	50-94	4G14	KIT, AIR CONDITIONING O-RING	70-137
1D17	HOUSING, TURBOCHARGER CENTER (AIRESEARCH)	30-13	5B12	KIT, AIR CONDITIONING O-RING	90-6
1D19	HOUSING, TURBOCHARGER CENTER (EARLY DESIGN).....	30-15	5B14	KIT, AIR CONDITIONING RETROFIT	90-7A
1D21	HOUSING, TURBOCHARGER CENTER (LATE DESIGN)	30-17	1D10	KIT, AIR STACK.....	30-5
1E22	HYDRAULIC ANEROID ACTIVATOR	30-44	2E21	KIT, AM RADIO (MOTOROLA)	40-76
4F18	HYDRAULIC CONTROL LEVER SUPPORT	70-117	2E22	KIT, AM-FM RADIO (MOTOROLA)	40-77
4F11	HYDRAULIC DIAGNOSTIC RECEPTACLE	70-109	4F14	KIT, AUXILIARY HYDRAULIC OUTLET	70-112
3G20	HYDRAULIC DRAIN PIPES, REAR (PFWD)	50-146	5B24	KIT, BLOWER FILTER CAPACITOR.....	90-18
1E12	HYDRAULIC HOSE, WATER SEPARATOR	30-33	5C4	KIT, BOLTS AND SEAT BELT FOR ROLL-GARD	90-23
3F23	HYDRAULIC LINE SHIELD	50-122	2F1	KIT, BOMAN TAPE PLAYER.....	40-81
3G18	HYDRAULIC LINES, FRONT (PFWD).....	50-144	3I12	KIT, BRAKE VALVE OVERHAUL	60-42
4G15	HYDRAULIC OIL	70-138	4F2	KIT, BREAKAWAY COUPLER OVERHAUL	70-99
4C18	HYDRAULIC OIL ATTENUATOR.....	70-36	4F5	KIT, BREAKAWAY COUPLER OVERHAUL	70-102
4G13	HYDRAULIC OIL CLEAN-UP KIT	70-136	3H10	KIT, CAP PLUG ASSORTMENT	60-14
4C8	HYDRAULIC OIL COOLER	70-26	3I6	KIT, CAP PLUG ASSORTMENT	60-36
4F22	HYDRAULIC OIL LINES, IMPLEMENT	70-121	2B24	KIT, CIRCUIT BREAKER SUPPORT.....	40-15B
4C14	HYDRAULIC OIL RESERVOIR	70-32	4E12	KIT, CLEVIS, DRAWBAR PIN	70-84
4B11	HYDRAULIC PUMP (PFWD) (4 IN3).....	70-6	5B8	KIT, COMPRESSOR SHAFT SEAL.....	90-2
4B9	HYDRAULIC PUMP (3 IN3).....	70-4	3G14	KIT, CONTROL VALVE OVERHAUL (PFWD)	50-140
4B8	HYDRAULIC PUMP ASSEMBLY, REPLACEMENT	70-3	2G7	KIT, CONVENIENCE ELECTRICAL OUTLET	40-105B
4B7	HYDRAULIC PUMP DRIVE	70-1	2G7	KIT, CONVENIENCE ELECTRICAL OUTLET SOCKET	40-105B
4B15	HYDRAULIC PUMP ELECTRIC DESTROKE KIT.....	70-10	4G11	KIT, CONVERSION, REMOTE CYLINDER.....	70-134
4C1	HYDRAULIC PUMP ELECTRIC DESTROKE KIT.....	70-20	4E17	KIT, COVER, DUAL SELECTIVE CONTROL	70-89
4C3	HYDRAULIC PUMP ELECTRIC-DESTROKE KIT.....	70-21A	4E17	KIT, COVER, TRIPLE SELECTIVE CONTROL.....	70-89
4C16	HYDRAULIC PUMP LINES	70-34	1D2	KIT, CYLINDER HEAD AND COMPLETE GASKET.....	20-42
4B17	HYDRAULIC PUMP OVERHAUL KIT	70-12	4F21	KIT, CYLINDER HOSE IDENTIFICATION.....	70-120
4C4	HYDRAULIC PUMP OVERHAUL KIT	70-22	4I6	KIT, DECAL REFINISHING	80-38
4B21	HYDRAULIC PUMP REPLACEMENT (PFWD) (4 IN3).....	70-16	4I9	KIT, DECAL, BI-LINGUAL	80-42
4B19	HYDRAULIC PUMP REPLACEMENT (3 IN3).....	70-14	3F17	KIT, DIFFERENTIAL, ANTI-FRICTION	50-116
4B13	HYDRAULIC PUMP STROKE CONTROL VALVE	70-8	4E18	KIT, DIRECTIONAL CONTROL VALVE	70-90
4B23	HYDRAULIC PUMP STROKE CONTROL VALVE	70-18	4E19	KIT, DIRECTIONAL CONTROL VALVE	70-91
3G9	HYDRAULIC PUMP SUPPORT (PFWD).....	50-134	5D15	KIT, DOOR	90-60
4C9	HYDRAULIC RETURN OIL LINES, FRONT	70-27	4E6	KIT, DRAWBAR SUPPORT	70-78
4C10	HYDRAULIC RETURN OIL LINES, REAR	70-28	4E10	KIT, DRAWBAR SUPPORT	70-82
4C12	HYDRAULIC RETURN OIL LINES, REAR	70-30	2G5	KIT, ELECTRICAL OUTLET SOCKET	40-105
4C11	HYDRAULIC THERMOSTAT BYPASS VALVE.....	70-29	2F25	KIT, ELECTRICAL REMOTE CONTROL	40-100
I			2G2	KIT, ELECTRICAL REMOTE CONTROL WIRING	40-102
2E7	IGNITION SWITCH.....	40-66	1B21	KIT, ENGINE OVERHAUL	20-17C
5B22	IMPELLER, BLOWER, CAB.....	90-16	1D25	KIT, ETHER STARTING AID	30-21
4F22	IMPLEMENT HYDRAULIC OIL LINES	70-121	1E2	KIT, ETHER STARTING TUBE	30-23
4E14	IMPLEMENT LINK	70-86	1C18	KIT, FAN BLAST DEFLECTOR	20-33
4D24	IMPLEMENT QUICK COUPLER	70-70	2F4	KIT, FENDER MOUNTED ANTENNA	40-85
4D23	IMPLEMENT SAFETY CHAIN	70-69	2G6	KIT, FLASHING WARNING LAMP	40-105A
2E9	INDICATOR LAMPS.....	40-68	2D19	KIT, FLOOD LAMPS	40-54
5E7	INNER ROOF, SOUND-GARD BODY.....	90-76	1F9	KIT, FOOT SPEED CONTROL	30-58
			4H23	KIT, FRONT HOOD HANDLE	80-31
			1E7	KIT, FUEL FILTER BASE (REPLACEMENT)	30-28
			1E3	KIT, FUEL TANK INSTALLATION	30-24
			5C1	KIT, HEATER INSTALLATION.....	90-20

1A19

4630 TRACTOR

ALPHABETICAL INDEX - CONTINUED

GRID		PAGE	GRID		PAGE
3F19	KIT, HIGH PRESSURE ANGLE FINAL DRIVE.....	50-118			
3F21	KIT, HIGH PRESSURE ANGLE FINAL DRIVE.....	50-120			
5D15	KIT, HINGE.....	90-60			
4G13	KIT, HYDRAULIC OIL CLEAN-UP.....	70-136			
4C14	KIT, HYDRAULIC OIL RESERVOIR.....	70-32			
4C1	KIT, HYDRAULIC PUMP ELECTRIC DESTORKE.....	70-20			
4B15	KIT, HYDRAULIC PUMP ELECTRIC DESTROKE.....	70-10			
4C3	KIT, HYDRAULIC PUMP ELECTRIC DESTROKE.....	70-21A			
4B17	KIT, HYDRAULIC PUMP OVERHAUL.....	70-12			
4C4	KIT, HYDRAULIC PUMP OVERHAUL.....	70-22			
3D5	KIT, INCREASED OIL FILTRATION.....	50-50			
3F3	KIT, INCREASED OIL FILTRATION (PST).....	50-98			
2D21	KIT, LAMPS AND LEADS FOR TURN SIGNALS.....	40-56			
3D11	KIT, MANUAL BYPASS VALVE.....	50-56			
3E20	KIT, MANUAL BYPASS VALVE.....	50-92			
2E18	KIT, NEUTRAL START SWITCH.....	40-73			
4G14	KIT, O-RING, HYDRAULIC.....	70-137			
1C1	KIT, OIL PAN.....	20-19			
3D1	KIT, OUTBOARD SHIFTER (SRT).....	50-46			
4G8	KIT, OVERHAUL, REMOTE CYLINDER.....	70-132			
4F1	KIT, OVERHAUL, SELECTIVE CONTROL VALVE.....	70-98			
3G6	KIT, PFWD BRAKE PISTON SEAL.....	50-131			
3G7	KIT, PFWD MANIFOLD AND PIVOT PIN SEAL.....	50-132			
1C3	KIT, PISTON/LINER.....	20-21			
2F2	KIT, RADIO ANTENNA.....	40-82			
2E20	KIT, RADIO MOUNTING.....	40-75			
4G3	KIT, REMOTE CYLINDER OVERHAUL.....	70-127			
1D11	KIT, REMOTE MOUNTED VACUUM SWITCH.....	30-6			
4D1	KIT, ROCKSHAFT CONTROL STABILIZER (SGB).....	70-44			
4C22	KIT, SCV CONTROL LEVER STABILIZER.....	70-40			
4D14	KIT, SCV CONTROL VALVE LEVER STABILIZER.....	70-58			
4E25	KIT, SELECTIVE CONTROL VALVE.....	70-97			
2B25	KIT, SERVICE WIRE RESISTANCE.....	40-16			
5E23	KIT, SOUND-GARD BODY UPHOLSTERY (BLACK).....	90-94			
2F3	KIT, SPEAKER.....	40-83			
2F2	KIT, SPEAKERS.....	40-82			
2D10	KIT, STARTER SEALING.....	40-45F			
2C17	KIT, STARTER SOLENOID COVER (DELCO-REMY).....	40-33			
2B15	KIT, STARTING AID WIRING.....	40-7A			
1F2	KIT, STARTING FUEL CONTROL.....	30-51			
1F3	KIT, STARTING FUEL CONTROL.....	30-52			
3H16	KIT, STEERING METERING PUMP.....	60-19A			
3G23	KIT, STEERING VALVE CYL. COVER PACKING.....	60-1			
3H5	KIT, STEERING VALVE CYLINDER OVERHAUL.....	60-8			
4I4	KIT, STEPS.....	80-37A			
3G24	KIT, STRG. VALVE CYLINDER COVER PACKING.....	60-2			
4B13	KIT, STROKE CONTROL VALVE SHUT-OFF.....	70-8			
4B23	KIT, STROKE CONTROL VALVE SHUT-OFF.....	70-18			
5B8	KIT, SUPERHEAT SHUT-OFF.....	90-2			
2G8	KIT, SUPPLEMENTARY WIRING.....	40-106			
3E24	KIT, TRANSMISSION CONTROL VALVE.....	50-95A			
3E1	KIT, TRANSMISSION GASKET.....	50-72			
2D22	KIT, TURN SIGNAL.....	40-57			
1C2	KIT, UNDERHAUL ENGINE (6404) (STD BRGS).....	20-20			
1D8	KIT, VACUUM SWITCH.....	30-2			
2B18	KIT, WIRING ACCESSORY RELAY (SGB).....	40-10			
2B19	KIT, WIRING ACCESSORY RELAY (SGB).....	40-11			
2G18	KIT, ELECTRICAL CONNECTOR AND TERMINAL.....	40-116			
4H3	KIT, FRONT WHEEL BEARING.....	80-12			
4G20	KNEE, FRONT AXLE.....	80-4			
3F25	KNEE, POWER FRONT WHEEL DRIVE.....	50-124			
1F5	KNOB, HAND SPEED CONTROL LEVER.....	30-54			
4G20	KNUCKLE, FRONT AXLE.....	80-4			
				L	
4H24	LABEL SERIES.....	80-32			
2C17	LABEL, BYPASS STARTER.....	40-33			
2D4	LABEL, BYPASS STARTER.....	40-45			
5C4	LABEL, CAUTION, ROLL-GARD.....	90-23			
5C4	LABEL, SEAT BELT CAUTION.....	90-23			
2C4	LABEL, SWITCH (PFWD).....	40-20			
4H24	LABEL, TRIM.....	80-32			
4I9	LABELS, BI-LINGUAL.....	80-42			
4I8	LABELS, GROUND SPEED.....	80-40			
2B9	LAMP, CONSOLE.....	40-2			
5F12	LAMP, DASH.....	90-108			
2D19	LAMP, FLOOD.....	40-54			
2B9	LAMP, FRONT.....	40-2			
2B11	LAMP, FRONT.....	40-4			
2D13	LAMP, FRONT.....	40-48			
2D15	LAMP, FRONT.....	40-50			
2D17	LAMP, FRONT.....	40-52			
2E9	LAMP, INDICATOR.....	40-68			
2B9	LAMP, REAR.....	40-2			
2B11	LAMP, REAR.....	40-4			
2D13	LAMP, REAR.....	40-48			
2D15	LAMP, REAR.....	40-50			
2D17	LAMP, REAR.....	40-52			
2B9	LAMP, WARNING.....	40-2			
2B11	LAMP, WARNING.....	40-4			
2D13	LAMP, WARNING.....	40-48			
2D15	LAMP, WARNING.....	40-50			
2D17	LAMP, WARNING.....	40-52			
2D21	LAMP, WARNING.....	40-56			
2D20	LAMP, WARNING (LESS RG OR SGB).....	40-55			
2D21	LAMPS AND LEADS FOR TURN SIGNALS KIT.....	40-56			
2D15	LAMPS, ROLL-GARD.....	40-50			
2D17	LAMPS, SOUND-GARD BODY.....	40-52			
5D19	LATCH, DOOR.....	90-64			
5D17	LATCH, DOOR, SOUND-GARD BODY.....	90-62			
5D2	LATCH, SEAT.....	90-47			
5D21	LATCH, SOUND-GARD BODY DOOR (LATE DESIGN).....	90-66			
4I2	LEFT-HAND STEP (LESS RG OR SGB).....	80-35			
4I1	LEFT-HAND STEP (RG AND SGB).....	80-34			
3C19	LEVER, GEAR SHIFT.....	50-37			
3C20	LEVER, GEARSHIFT (QUAD-RANGE).....	50-38			
4D6	LEVER, LOAD SELECTOR CONTROL.....	70-50			
4D8	LEVER, LOAD SELECTOR CONTROL.....	70-52			
3E18	LEVER, PTO CLUTCH (POWER SHIFT).....	50-90			
3B22	LEVER, PTO CLUTCH (QRT AND SRT).....	50-17			
3B21	LEVER, PTO CLUTCH (SRT).....	50-16			
4D10	LEVER, ROCKSHAFT CONTROL LEVER.....	70-54			
3C25	LEVER, SPEED SELECTOR.....	50-44			
3E12	LEVER, TRANSMISSION SHIFTER CONTROL.....	50-84			
4F16	LEVERS, SELECTIVE CONTROL.....	70-114			
3H2	LEVERS, STEERING VALVE OPERATING.....	60-5			
4D19	LIFT LINK.....	70-64			
1B8	LIFT STRAPS.....	20-5			
2E7	LIGHT SWITCH.....	40-66			
2D23	LIGHT, DOME.....	40-58			
2D24	LIGHT, DOME (LATE DESIGN).....	40-59			
2E7	LIGHTER, CIGAR.....	40-66			
4G12	LINE, BULK FLEXIBLE OIL.....	70-135			
1E8	LINE, FUEL FILTER.....	30-29			
1E9	LINE, FUEL INLET (REPLACEMENT).....	30-30			
5C3	LINE, HEATER SUPPLY.....	90-22			
4C16	LINE, HYDRAULIC PUMP SEAL DRAIN.....	70-34			
1C3	LINER SHIM.....	20-21			
1C3	LINER, CYLINDER.....	20-21			

1A21

4630 TRACTOR

ALPHABETICAL INDEX - CONTINUED

GRID		PAGE	GRID		PAGE
3D5	OIL FILTRATION KIT, INCREASED	50-50	3C2	PINION, DIFFERENTIAL BEVEL (QRT AND SRT)	50-21A
3H23	OIL LINES STEERING (FRONT).....	60-28	3G5	PINION, FIRST PLANET (PFWD)	50-130
3I6	OIL LINES, BRAKE (REAR).....	60-36	3C4	PINION, HIGH RANGE (QRT AND SRT)	50-22
3F11	OIL LINES, DIFFERENTIAL LOCK VALVE.....	50-107	3C4	PINION, LOW RANGE (QRT AND SRT)	50-22
4C16	OIL LINES, HYDRAULIC SYSTEM	70-34	3F19	PINION, PLANET (REAR AXLE)	50-118
4F22	OIL LINES, HYDRAULIC, IMPLEMENT	70-121	3E6	PINION, PLANETARY (POWER SHIFT).....	50-77
3H22	OIL LINES, STEERING (MIDDLE).....	60-26	3G4	PINION, SECOND PLANET	50-129
3H21	OIL LINES, STEERING (REAR)	60-25	4F13	PIPE, PRESSURE, SELECTIVE CONTROL.....	70-111
1D14	OIL LINES, TURBOCHARGER	30-10	5B12	PIPES, AIR CONDITIONING	90-6
3I8	OIL LINES, UPPER BRAKE.....	60-38	3H7	PIPES, FIXED STEERING	60-10
1B25	OIL PAN	20-18	3H10	PIPES, FRONT STEERING	60-14
1B25	OIL PAN GASKET	20-18	1E3	PIPES, FUEL	30-24
1C1	OIL PAN KIT.....	20-19	1E13	PIPES, FUEL INJECTION (EARLY DESIGN).....	30-34
4C18	OIL PIPES, ATTENUATOR	70-36	3G19	PIPES, HYDRAULIC (PFWD)	50-145
3H7	OIL PIPES, FIXED STEERING	60-10	4C6	PIPES, OIL, ROCKSHAFT	70-24
3H10	OIL PIPES, FRONT STEERING	60-14	3F6	PIPES, OIL, TRANSMISSION CONTROL.....	50-102
4C6	OIL PIPES, HYDRAULIC SYSTEM	70-24	3G20	PIPES, REAR HYDRAULIC DRAIN (PFWD)	50-146
3H8	OIL PIPES, TELESCOPING STEERING.....	60-12	3H8	PIPES, TELESCOPING STEERING	60-12
3F6	OIL PIPES, TRANSMISSION CONTROL	50-102	1C3	PISTON RINGS	20-21
2E9	OIL PRESSURE GAUGE.....	40-68	1C3	PISTON/LINER KIT	20-21
1C5	OIL PUMP DRIVE GEAR.....	20-23	1C3	PISTON, ENGINE	20-21
1C15	OIL PUMP, ENGINE.....	20-30	3D23	PISTON, HIGH RANGE CLUTCH	50-69
3D3	OIL PUMP, TRANSMISSION	50-48	3D21	PISTON, LOW RANGE CLUTCH	50-68
3D19	OIL PUMP, TRANSMISSION CLUTCH.....	50-66	3B13	PISTON, PTO CLUTCH OPERATING (SRT)	50-8
3D11	OIL RETURN CHECK VALVE	50-56	4C24	PISTON, ROCKSHAFT.....	70-42
1C14	OIL SEAL, CRANKSHAFT	20-29	3G23	PISTON, STEERING VALVE	60-1
3D2	OIL SHIELD, PTO DRIVE SHAFT.....	50-47	3B15	PISTON,PTO CLUTCH OPERATING(QRT AND SRT).....	50-10
1B6	OIL, ENGINE	20-1	3F19	PLANET PINION CARRIER	50-118
4G15	OIL, HYDRAULIC AND TRANSMISSION	70-138	3C6	PLANET PINION CARRIER (QUAD-RANGE).....	50-24
5F14	OPERATOR SHIELD	90-110	3F19	PLANETARY AND REAR AXLE	50-118
5C23	OPERATOR'S MANUAL HOLDER (LESS SGB)	90-43	3E6	PLANETARY ASSEMBLY (POWER SHIFT).....	50-77
4H24	ORNAMENT, HOOD.....	80-32	3E5	PLANETARY BRAKE, FIRST (POWER SHIFT)	50-76
3D1	OUTBOARD SHIFTER KIT (SRT).....	50-46	3E2	PLANETARY BRAKE, FOURTH (POWER SHIFT).....	50-73
4F14	OUTLET KIT, HYDRAULIC, AUXILIARY.....	70-112	3E4	PLANETARY BRAKE, SECOND (POWER SHIFT).....	50-75
1C22	OVERFLOW, RADIATOR.....	20-37	3E3	PLANETARY BRAKE, THIRD (POWER SHIFT).....	50-74
4F5	OVERHAUL KIT, BREAKAWAY COUPLER	70-102	3G4	PLANETARY HOUSING.....	50-129
3G14	OVERHAUL KIT, CONTROL VALVE (PFWD)	50-140	3E7	PLANETARY, TRANSMISSION, ASSEMBLED (PST)	50-78
1B21	OVERHAUL KIT, ENGINE	20-17C	3G4	PLATE, BRAKE	50-129
4B17	OVERHAUL KIT, HYDRAULIC PUMP.....	70-12	3I5	PLATE, BRAKE	60-35
4C4	OVERHAUL KIT, HYDRAULIC PUMP.....	70-22	3I4	PLATE, BRAKE FACING	60-34
4F9	OVERHAUL KIT, ISO COUPLER	70-106	3I4	PLATE, BRAKE PRESSURE	60-34
4G8	OVERHAUL KIT, REMOTE CYLINDER	70-132	3D16	PLATE, CLUTCH DRIVE	50-62
4F1	OVERHAUL KIT, SELECTIVE CONTROL VALVE	70-98	3D17	PLATE, CLUTCH DRIVE	50-63
			3C4	PLATE, CLUTCH DRIVE (QRT AND SRT).....	50-22
			4I8	PLATE, GROUND SPEED.....	80-40
			5F1	PLATFORM.....	90-97
			5F2	PLATFORM AND CONSOLE SUPPORT	90-98
			5F1	PLATFORM MAT	90-97
			4G19	POWER FRONT WHEEL DRIVE	80-2
			3G16	POWER FRONT WHEEL DRIVE REPLACEMENT KIT	50-142
			4H2	POWER FRONT WHEEL DRIVE WHEELS	80-11
			4E13	POWER WEIGHT TRANSFER COUPLER	70-85
			4E15	POWER WEIGHT TRANSFER VALVE	70-87
			4C6	PRESSURE CONTROL VALVE OIL PIPES	70-24
			4F13	PRESSURE PIPE, SELECTIVE CONTROL	70-111
			3D11	PRESSURE SWITCH.....	50-56
			2C4	PRESSURE SWITCH (PFWD).....	40-20
			2C5	PRESSURE SWITCH (PFWD).....	40-21
			5B18	PRESSURIZER BLOWER	90-12
			5B20	PRESSURIZER BLOWER, SGB	90-14
			5E9	PRESSURIZER COVER.....	90-78
			5B17	PRESSURIZER FILTERS.....	90-11
			5E3	PRESSURIZER PANEL, ROOF.....	90-72
			3B11	PTO CLUTCH (QRT AND SRT)	50-6
			3E18	PTO CLUTCH CONTROL (POWER SHIFT).....	50-90
			3B21	PTO CLUTCH LEVER (SRT).....	50-16
			3D8	PTO DRIVE GEAR (SYNCRO-RANGE)	50-53

P

1B7	PACKING, LUBRICANT, CYLINDER LINER.....	20-2
1B25	PAN, OIL.....	20-18
5B16	PANEL, AIR LOUVER	90-9
5F12	PANEL, INSTRUMENT.....	90-108
4H22	PANEL, SIDE	80-30
3E10	PARK LOCK, TRANSMISSION (POWER SHIFT).....	50-81
3D14	PEDAL CLUTCH (PST)	50-60
3I13	PEDAL, BRAKE	60-44
3B10	PEDAL, CLUTCH	50-4
3F12	PEDAL, DIFFERENTIAL LOCK VALVE	50-108
2E13	PERFORMANCE TRAK II MINI-MONITOR.....	40-69C
5C21	PERSONAL-POSTURE SEAT	90-40
5D3	PERSONAL-POSTURE SEAT SUSPENSION	90-48
3G6	PFWD BRAKE PISTON SEAL KIT	50-131
3G7	PFWD MANIFOLD AND PIVOT PIN SEAL KIT	50-132
3G1	PFWD WHEEL HUB, MOTOR, AND HOUSING.....	50-126
4E4	PIN, DRAWBAR	70-76
4E8	PIN, DRAWBAR	70-80
4E13	PIN, DRAWBAR	70-85
3E8	PINION, BEVEL, DIFFERENTIAL	50-79