

1050C Crawler Bulldozer



JOHN DEERE

PARTS CATALOG

1050C Crawler Bulldozer

PC2885 (Jan-07) English

Worldwide Construction and Forestry Division

Worldwide Edition
Litho in U.S.A. (Revised)
COPYRIGHT © 2007
DEERE & COMPANY
Moline, Illinois
All rights reserved

INTRODUCTION AND CUSTOMER INFORMATION

T189842A

-UN-22APR03



*SIDE VIEW OF JOHN DEERE 1050C CRAWLER BULLDOZER
(MANUFACTURED 2001-)*

TO THE CUSTOMER

THE PART NUMBERS IN THIS PARTS CATALOG WERE CORRECT AT THE TIME YOUR CATALOG WAS PUBLISHED. IT IS OUR POLICY TO CONSTANTLY IMPROVE OUR MACHINES AND, THEREFORE, PART NUMBERS MAY CHANGE. WHEN ORDERING PARTS, VERIFY PART NUMBERS THROUGH YOUR DEALER

(SPECIFICATIONS AND DESIGN SUBJECT TO CHANGE WITHOUT NOTICE.)

SERIAL NUMBER LOCATIONS

EACH 1050C HAS TWO SERIAL NUMBER PLATES. ONE FOR THE PRODUCT IDENTIFICATION NUMBER AND ONE FOR **THE ENGINE**.

THE ENGINE SERIAL NUMBER IS A TEN DIGIT NUMBER (XXXX XX XXXX) LOCATED ON THE ENGINE INFORMATION PLATE WHICH IS FOUND ON THE INTAKE MANIFOLD.

LEFT SIDE AND RIGHT SIDE, FRONT AND REAR OF THE CRAWLER ARE VIEWED BY FACING IN THE DIRECTION OF CRAWLER FORWARD TRAVEL.

WHENEVER SERIAL NUMBERS ARE REQUIRED ON WARRANTY CLAIMS OR CORRESPONDENCE PERTAINING TO THIS PRODUCT, IT IS EXTREMELY IMPORTANT THAT ALL CHARACTERS BE FURNISHED. THIS POINT CANNOT BE OVEREMPHASIZED.

SERIAL NUMBER LISTING INFORMATION

SERIAL NUMBER INFORMATION IS LISTED TO SHOW ON WHICH MACHINES EACH PART CAN BE USED; FOR EXAMPLE:

- THE PART CAN BE USED ON ALL MACHINES.
- 000000- THE PART CAN BE USED ON ALL MACHINES BEGINNING WITH THE SERIAL NUMBER LISTED.
- 000000 THE PART CAN BE USED ON ALL MACHINES UP TO AND INCLUDING THE SERIAL NUMBER LISTED.
- 000000-000000 THE PART CAN BE USED ON ALL MACHINES BETWEEN AND INCLUDING THE SERIAL NUMBERS LISTED.

WHEN XXXXXX'S ARE LISTED IN PLACE OF A SERIAL NUMBER, A SERIAL NUMBER CHANGE WAS MADE BUT THE EXACT SERIAL NUMBER WAS NOT AVAILABLE WHEN THE CATALOG WAS PRODUCED.

DIRECTION ARROW

ARROWS ARE USED WITH ILLUSTRATIONS TO INDICATE THE FRONT OF THE UNIT. "RIGHT-HAND" AND "LEFT-HAND" SIDES OF THE LOADER OR TRACTOR PARTS ARE DETERMINED BY FACING IN THE DIRECTION OF MACHINE FORWARD TRAVEL

BOX-ENCLOSED ILLUSTRATIONS

A KEY NUMBER, SHOWN IN THE PARTS LIST, IS ASSIGNED TO A BOX ENCLOSING ALL PARTS SOLD AS A SERVICE ASSEMBLY.

WHOLE GOODS LISTINGS

WHOLE GOODS PART NUMBERS ARE IDENTIFIED IN THE PART NUMBER REMARKS COLUMN.DO NOT INCLUDE ON A REPLACEMENT PARTS ORDER.

CHANGE INDICATOR LINE

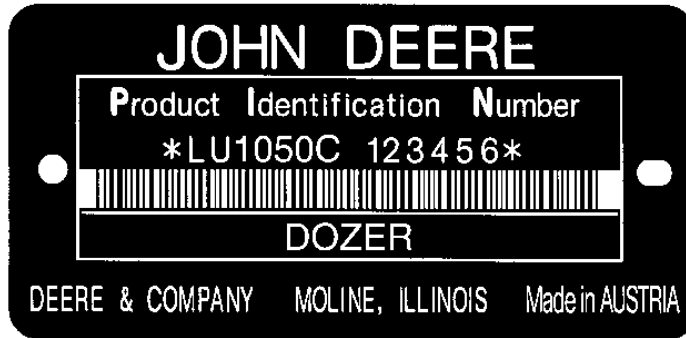
CHANGES AFFECTING THE ORDERING OF PARTS ARE IDENTIFIED BY VERTICAL LINES MARKED IN THE LEFT-HAND MARGIN OF REVISED PARTS LISTING IMAGES. A LINE IS ALSO AT THE LEFT-HAND EDGE OF THE SAME PART NUMBER IN THE NUMERICAL INDEX TO SHOW THE LOCATION OF REVISED INFORMATION.

0001-4

1050C CRAWLER DOZER

PRODUCT IDENTIFICATION NUMBER

T139673 -UN-07MAR01



T139673

- | | |
|-------------------------------------|-------------------|
| 1. DESIGNATES CRAWLER MANUFACTURER | LU - LIEBHERR |
| 2. DESIGNATES CRAWLER MODEL | 1050C |
| 3. DESIGNATES CRAWLER CONFIGURATION | C |
| 4. DESIGNATES CRAWLER SERIAL NUMBER | 123456 |
| 5. DESIGNATES UNIT TYPE | CRAWLER BULLDOZER |

ALPHABETICAL INDEX

	PAGE		PAGE
A			
A/C COMPRESSOR		AIR CONDITIONER FITTINGS	1830-6
(SERIAL NO. -005361)	1830-2	AIR CONDITIONER HOSES	1830-6
A/C COMPRESSOR		AIR CONDITIONER IMPROVEMENT KIT	1830-14
(SERIAL NO. 005362-)	1830-4	AIR CONDITIONER INDICATOR LIGHTS	1674-14
A/C COMPRESSOR BELT		AIR CONDITIONER THERMOSTAT & VENTILATION	1830-14
(SERIAL NO. -005361)	1830-2	AIR CONDITIONER VAPOR CONDENSER	
A/C COMPRESSOR BELT PULLEY		COMPONENT PARTS	1833-6
(SERIAL NO. 005362-)	1830-4	AIR CONDITIONER VAPOR CONDENSER	
A/C COMPRESSOR MOUNTING BRACKET		IMPELLER	1833-6
(SERIAL NO. -005361)	1830-2	AIR CONDITIONER VAPOR CONDENSER COVER,	
A/C COMPRESSOR MOUNTING BRACKET		CLAMP, GUARD, GROMMET, AND HOUSING	1833-4
(SERIAL NO. 005362-)	1830-4	AIR CONDITIONER VAPOR CONDENSER PLATE,	
A/C ELECTRICAL WIRING HARNESS, CIRCUIT		BUSHING, PLUG AND CLAMPS	1833-2
BREAKER, AND RELAYS	1674-21C	AIR CONDITIONER VAPOR CONDENSER PLATE,	
ABSORBER, HOOD	1910-4	O-RING, HOUSING, AND BRACKET	1833-6
ACCESS COVER, FUEL TANK	0560-2	AIR CONDITIONER VAPOR CONDENSER RADIATOR	
ACCESS COVER, ENGINE FRONT COVER		/REFRIGERANT HOSE AND RECEIVER-DRYER	1833-6
(SER. NO. -005599)	0402-10	AIR CONDITIONER, CLAMPS	1830-6
ACCESS COVER, FUEL TANK	0560-2	AIR CONDITIONING CONDENSER (COMPLETE)	1833-4
ACCUMULATOR DECAL	1322-2	AIR CONDITIONING CONDENSER WIRING	
ACCUMULATOR LABEL	1322-2	HARNESS	1833-2
ACCUMULATOR, SECONDARY PARK BRAKE		AIR CONDITIONING ELECTRICAL CONNECTORS	1674-21C
RELEASE	0360-27A	AIR CONDITIONING ELECTRICAL SOCKET	1674-21C
ACCUMULATOR, WINCH HYDRAULICS	4060-6	AIR CONDITIONING ELECTRICAL WIRING	
ACCUMULATOR, HYDROSTATIC SOLENOID		HARNESS	1674-21C
MANIFOLD(S.N. -005599)	0360-28	AIR CONDITIONING EXPANSION VALVE	
ACCUMULATOR, HYDROSTATIC SOLENOID		(SERIAL NO. -008100)	1830-10
MANIFOLD(S.N. 005600-)	0360-29A	AIR CONDITIONING EXPANSION VALVE	
ADAPTER PLATE, FAN DRIVE HYDRAULIC PUMP		(SERIAL NO. 008101-)	1830-12
MOUNTING	2160-10	AIR CONDITIONING INSTRUMENT PANEL	
ADAPTER PLATE, FAN PUMP	2160-10	PUSH BUTTON	1674-21C
ADAPTER, ENGINE OIL FILTER	0407-10	AIR CONDITIONING CONDENSER	
ADAPTER, FAST FUELING FUEL TANK	0560-8	AND MOUNTING HARDWARE	1833-2
ADAPTER, GREASE FITTING FOR TRACK		AIR COOLER, RADIATOR	0510-4
ADJUSTMENT	2005-2	AIR FILTER ELEMENT FOR DUST EJECTION	
ADAPTER, GREASE GUN EXTENSION HOSE	2005-2	SYSTEM ON WASTE HANDLER, CAB FRESH	1810-18
ADAPTER, WINDOW WIPER WIRING	1810-23C	AIR INLET MANIFOLD REAR AND	
ADAPTER, FUEL INJECTION PUMP DRIVE GEAR		TURBOCHARGER SIDE	0414-6
(SER. NO. 005600-)	0413-5C	AIR INLET MANIFOLD REAR AND	
ADAPTERS, FUEL FILTER HEAD (SN. 005600-)	0420-12	TURBOCHARGER SIDE ELBOWS	0414-6
ADHESIVE, CAB SLIDING REAR WINDOW	1814-4	AIR INLET MANIFOLD REAR AND TURBOCHARGER	
ADHESIVE, CAB SLIDING SIDE WINDOW	1814-2	SIDE CONNECTORS	0414-6
ADJUSTER/TENSIONER COMPLETE, TRACK CHAIN	0130-4	AIR INLET MANIFOLD, REAR AND	
ADJUSTING STRAP, ALTERNATOR		TURBOCHARGER SIDE	0414-6
(S.N. -005599)	0423-2	AIR INTAKE HOSES, ENGINE	0520-6
AIR CLEANER AND ELEMENTS (PRIMARY/		AIR INTAKE MANIFOLD GASKETS, RIGHT AND	
SECONDARY) FILTER, ENGINE	0520-2	LEFT	0414-4
AIR CLEANER MANIFOLD, ENGINE	0520-4	AIR INTAKE MANIFOLD, FRONT	0414-2
AIR CLEANER MOUNTING BRACKET, ENGINE	0520-2	AIR INTAKE MANIFOLD, RIGHT AND LEFT	0414-4
AIR CLEANER, ALTERNATOR	0520-10	AIR INTAKE MANIFOLD, FRONT	0414-2
AIR CONDITIONING ELECTRICAL PLUGS	1674-21C	AIR INTAKE PIPES, ENGINE	0520-6
AIR CONDITIONER CIRCUIT BREAKER	1674-16	AIR INTAKE PRE-CLEANER KIT	0520-8
AIR CONDITIONER COMPONENT PARTS		AIR INTAKE PRECLEANER, ENGINE	0520-8
(SERIAL NO. -008100)	1830-10	AIR INTAKE SEAL KIT	0409-6
AIR CONDITIONER COMPONENT PARTS		AIR INTAKE STACK	0520-8
(SERIAL NO. 008101-)	1830-12	AIR RECIRCULATION FILTER, CAB PLATFORM	
AIR CONDITIONER COMPRESSOR		(SERIAL NO. -007908)	1810-10
(SERIAL NO. -005361)	1830-2	AIR RECIRCULATION FILTER, CAB PLATFORM	
AIR CONDITIONER COMPRESSOR		(SERIAL NO. 007909-)	1810-11A
(SERIAL NO. 005362-)	1830-4	AIR SUSPENSION COMPONENT PARTS,	
AIR CONDITIONER COMPRESSOR COVER		SEAT	1821-4
(SERIAL NO. -005361)	1830-2	AIR SUSPENSION SEAT SWITCH	1821-4
AIR CONDITIONER COMPRESSOR COVER		AIR SUSPENSION WIRING HARNESS	1821-2
(SERIAL NO. 005362-)	1830-4	ALARM; BACKUP ELECTRICAL CONNECTORS	1674-30
AIR CONDITIONER ELECTRICAL CONNECTORS	1674-32	ALARM, BACKUP	2004-2
		ALARM, REVERSE	2004-2
		ALTERNATOR (SN -005599)	1672-2

ALPHABETICAL INDEX - CONTINUED

	PAGE		PAGE
ALTERNATOR (SN 005600-)	1672-4	AUTOMATIC REVERSIBLE FAN CONTROLLER	
ALTERNATOR ADJUSTING PULLEY	0423-6	(WITH WOODCHIP OR WASTE HANDLING)	0510-14
ALTERNATOR ADJUSTING PULLEY		AUXILIARY CONTROL VALVE COMPONENTS	4260-2
(S.N. 005600-)	0423-4	AUXILIARY HYDRAULIC CONTROL VALVE	
ALTERNATOR ADJUSTING PULLEY(SCRAPER PKG)	0423-6	(SCRAPER PULLER)	2160-26
ALTERNATOR ADJUSTING STRAP		AUXILIARY LINKAGE COVER	1810-6
(S.N. -005599)	0423-2	AUXILIARY PILOT CONTROLLER BOOT, REAR	4260-4
ALTERNATOR ADJUSTING STRAP		AUXILIARY PILOT CONTROLLER HANDLE, REAR	4260-4
(S.N.-005599)	0423-2	AUXILIARY PILOT CONTROLLER HYDRAULIC	
ALTERNATOR AIR CLEANER	0520-10	HOSES, REAR	4260-4
ALTERNATOR AIR CLEANER KIT	0520-10	AUXILIARY PILOT CONTROLLER ROD	4260-4
ALTERNATOR DRIVE BELT	0423-6	AUXILIARY PILOT CONTROLLER SHAFT	4260-4
ALTERNATOR DRIVE BELT		AUXILIARY PILOT CONTROLLER, REAR	4260-4
(S.N. -005599)	0423-2	AUXILIARY SECTION HYDRAULIC CONTROL	
ALTERNATOR DRIVE BELT		VALVE	4260-2
(S.N. 005600-)	0423-4	AUXILIARY SECTION HYDRAULIC OIL MANIFOLD	4260-2
ALTERNATOR DRIVE BELT TENSIONER	0423-6	AXIAL FACE SEAL, TRACK FLANGE ROLLER	
ALTERNATOR DRIVE BELT TENSIONER		(S.N. - 005801)	0130-8
(S.N. 005600-)	0423-4	AXIAL FACE SEAL, TRACK FLANGE ROLLER	
ALTERNATOR DRIVE BELT TENSIONER		(S.N. 005802 -)	0130-10
(SCRAPER PULLER PACKAGE)	0423-6		
ALTERNATOR DRIVE BELT(SCRAPER PULLER)	0423-6	B	
ALTERNATOR FAN (SN -005599)	1672-2	BACK UP ALARM PRESSURE SWITCH	2004-2
ALTERNATOR FAN (SN 005600-)	1672-4	BACK UP ALARM PRESSURE SWITCH	
ALTERNATOR MOUNTING BRACKET	0423-6	(SER. NO. - 006199)	2004-8
ALTERNATOR MOUNTING BRACKET		BACKREST EXTENSION, SEAT	1821-2
(S.N. -005599)	0423-2	BACKUP ALARM	2004-2
ALTERNATOR MOUNTING BRACKET		BACKUP ALARM BRACKET	2004-2
(S.N. 005600-)	0423-4	BACKUP ALARM BRACKET	
ALTERNATOR MOUNTING BRACKET(SCRAPER PKG)	0423-6	(SER. NO. - 006199)	2004-8
ALTERNATOR PULLEY (SN -005599)	1672-2	BACKUP ALARM CIRCUIT BREAKER	1674-16
ALTERNATOR PULLEY (SN 005600-)	1672-4	BACKUP ALARM ELECTRICAL CONNECTORS	1674-30
ALTERNATOR RING (SN -005599)	1672-2	BACKUP ALARM KIT II	
ALTERNATOR RING (SN 005600-)	1672-4	(SER. NO. - 006199)	2004-8
ANGLE BLADE	3201-12	BACKUP ALARM WIRE HARNESS	2004-2
ANGLE BLADE PUSH BEAM	3240-18	BALL JOINT,ENGINE SPEED CONTROL	0515-2
ANGLE BLADE PUSH BEAM SLIDE PINS	3240-22	BALL, ANGLE BLADE TRUNNION	3201-12
ANGLE BLADE SLIDE BEARING	3240-20	BALL, PUSHBEAM TRUNNION/	
ANGLE BLADE SLIDE STOPS		CONNECTION	0130-2
(MANUAL PITCH JACK)	3240-20	BALL, SEMI-U BLADE TRUNNION	3201-8
ANGLE BLADE TRUNNION BALL	3201-12	BALL, U-BLADE TRUNNION	3201-6
ANTENNA, RADIO	2001-2	BAR, RIGHT AND LEFT (FOR WASTE HANDLER)	
ANTI-SKID PAD; COUNTERWEIGHT (WASTE		STRIKER	1740-2
HANDLER PACKAGE)	1749-4	BARREL, BLADE PITCH CYLINDER	
APRON CONTROL VALVE FITTINGS, SCRAPER	2160-28	(SERIAL NO. 006024-)	3240-9A
APRON CONTROL VALVE HOSES(SCRAPER)	2160-28	BARREL, BLADE TILT CYLINDER	
APRON CONTROL VALVE, SCRAPER	2160-28	(SERIAL NO. -006023)	3240-8
APRON SOLENOID ELECTRICAL HARNESS		BARREL, BLADE TILT CYLINDER	
(SCRAPER PULLER)	1674-24	(SERIAL NO. 006024-)	3240-9A
APRON VALVE HOSES TO CONTROL VALVE		BARREL, ONE TOOTH RIPPER CYLINDER	4201-3A
(SCRAPER PULLER)	2163-18	BARREL, PITCH CYLINDER	
APRON VALVE TO SOLENOID VALVE		(SERIAL NO. -006023)	3240-8
MANIFOLD HOSE (SCRAPER PULLER)	2163-18	BASE, RADIATOR COOLANT FILTER	0510-16
APRON VALVE, SCRAPER	2160-28	BASIC SERVIC TOOLS	2005-2
ARM REST, OPERATOR'S SEAT	1821-2	BASIC SERVICE TOOLS, EYEBOLT	2005-2
ARMS, ROCKER	0402-4	BATTERIES	1671-2
ARMS, WINDOW WIPER	1810-22	BATTERY CABLE, CIRCUIT BREAKER	1671-2
ASHTRAY	1810-26	BATTERY CABLES	1671-2
ATTACHING DRAWBAR PINS	1512-4	BATTERY COMPARTMENT DOOR	0560-4
ATTACHING HARDWARE, CAB PLATFORM	1810-8	BATTERY COMPARTMENT DOOR LATCH	0560-4
ATTACHING HITCH	1512-4	BATTERY COMPARTMENT DOOR LOCK	0560-4
ATTACHMENT HANDLE, SCRAPER PULLER	1512-6	BATTERY COMPARTMENT DOOR LOCK KEY	0560-4
ATTACHMENT, SCRAPER PULLER REAR	1512-6	BATTERY HOLD DOWN BRACKET	1671-4
AUTOMATIC REV.FAN CIRCUIT BRAKER		BATTERY LABEL	1322-2
(WITH WOODCHIP OR WASTE HANDLING)	0510-14	BATTERY MAIN RELAY	1674-6
AUTOMATIC REV.FAN SWITCH			
(WITH WOODCHIP OR WASTE HANDLING)	0510-14		

ALPHABETICAL INDEX - CONTINUED

	PAGE		PAGE
BATTERY TRAY.....	1671-4	BELT TENSIONER, ALTERNATOR DRIVE	
BEACON LIGHT WIRING CONNECTORS.....	2004-6	(S.N. 005600-).....	0423-4
BEACON WARNING LIGHT.....	2004-6	BELT TENSIONER, ALTERNATOR DRIVE	
BEACON WARNING LIGHT SWITCH.....	2004-6	(SCRAPER PULLER PACKAGE).....	0423-6
BEACON WARNING LIGHT WIRING HARNESS.....	2004-6	BELT TIGHTENER, ALTERNATOR DRIVE.....	0423-6
BEAM, PUSH(ANGLE BLADE).....	3240-18	BELT TIGHTENER, ALTERNATOR DRIVE	
BEAM, RIGHT PUSH TRUNNION CAP		(SCRAPER PULLER PACKAGE).....	0423-6
(ANGLE BLADE PUSH BEAM).....	3240-22	BELT, A/C COMPRESSOR	
BEAM,LEFT PUSH, HYDRAULIC PITCH CYLINDER		(SERIAL NO. -005361).....	1830-2
(ANGLE BLADE).....	3240-21A	BELT, AIR CONDITIONER COMPRESSOR DRIVE	
BEAM,RIGHT PUSH, HYDRAULIC TILT CYLINDER		(SERIAL NO. -005361).....	1830-2
(ANGLE BLADE).....	3240-23A	BELT, AIR CONDITIONER COMPRESSOR DRIVE	
BEARING CAP, BLADE TO PUSH BEAM FOR		(SERIAL NO. 005362-).....	1830-4
ANGLE BLADE PUSH BEAM.....	3240-18	BELT, ALTERNATOR DRIVE.....	0423-6
BEARING CAP, MANUAL PITCH JACK		BELT, ALTERNATOR DRIVE	
(ANGLE BLADE PUSH BEAM).....	3240-20	(S.N. -005599).....	0423-2
BEARING CAP, TILT CYLINDER, RIGHT ANGLE		BELT, ALTERNATOR DRIVE	
BLADE PUSH BEAM.....	3240-22	(S.N. 005600-).....	0423-4
BEARING CAPS, CYLINDER BLOCK MAIN.....	0404-4	BELT, ALTERNATOR DRIVE(SCRAPER PULLER).....	0423-6
BEARING, ANGLE BLADE CYLINDER MOUNTING.....	3201-12	BELT, SEAT (2 INCH-3 INCH).....	1821-4
BEARING, ANGLE BLADE PUSH BEAM.....	3240-18	BELT, SEAT, MECHANICAL SUSPENSION.....	1821-6
BEARING, BELT TENSIONER, ALTERNATOR.....	0423-6	BIT (170") U-BLADE END.....	3201-6
(S.N. 005600-).....	0423-4	BLADE BEARING, ANGLE BLADE CYLINDER	
BEARING, BELT TENSIONER, ALTERNATOR		MOUNTING.....	3201-12
(SCRAPER PULLER PACKAGE).....	0423-6	BLADE BEARING, SEMI-U (165") CYLINDER	
BEARING, HYDROSTATIC MOTOR.....	0360-22	MOUNTING.....	3201-8
BEARING, HYDROSTATIC PUMP.....	0360-4	BLADE CONNECTION JOURNAL FOR ANGLE BLADE	
BEARING, LEFT PUSH BEAM(ANGLE BLADE).....	3240-20	PUSH BEAM.....	3240-18
BEARING, MAIN HYDRAULIC PUMP DRIVE		BLADE CUTTING EDGE (165").....	3201-8
SHAFT.....	2160-4	BLADE CUTTING EDGE (170"), U.....	3201-6
BEARING, PIVOT SHAFT.....	0130-22	BLADE END BIT (170") U.....	3201-6
BEARING, RIGHT ANGLE BLADE PUSH BEAM.....	3240-22	BLADE END BIT, SEMI-U (165").....	3201-8
BEARING, SEMI-U BLADE CYLINDER MOUNTING		BLADE HYDRAULIC PITCH CYLINDER COMPONENT	
(165").....	3201-8	(SERIAL NO. 006024-).....	3240-9A
BEARING, TRACK CHAIN CARRIER ROLLER-		BLADE LIFT CYLINDER.....	3260-2
ROLLER BEARING.....	0130-18	BLADE LIFT CYLINDER BRACKETS.....	3260-4
BEARING, TRACK CHAIN CARRIER ROLLER-		BLADE LIFT CYLINDER COMPLETE.....	3260-4
ROLLER BEARING (SCRAPER PULLER).....	0130-20	BLADE LIFT CYLINDER HYDRAULIC	
BEARING,ENGINE CONNECTING ROD.....	0403-2	HOSES.....	3260-4
BEARINGS, BLADE LIFT CYLINDER YOKE.....	3201-2	BLADE LIFT CYLINDER REPAIR KIT.....	3260-2
BEARINGS, CROSSBAR		BLADE LIFT CYLINDER YOKE.....	3201-2
(S.N. -007391).....	0135-2	BLADE LIFT CYLINDER YOKE BEARINGS.....	3201-2
BEARINGS, CROSSBAR		BLADE LIFT CYLINDER YOKE BUSHING.....	3201-2
(S.N. 007392-).....	0135-4	BLADE PITCH CONVERSION KIT, MANUAL	
BEARINGS, FINAL DRIVE.....	0201-4	TO HYDRAULIC.....	3240-7A
BEARINGS, FINAL DRIVE.....	0201-8	BLADE PITCH CYLINDER CONTROL VALVE.....	3260-12
BEARINGS, SLIDE STOP, ANGLE BLADE		BLADE PITCH CYLINDER CONTROL VALVE	
(MANUAL PITCH JACK).....	3240-20	SOLENOID.....	3260-12
BEARINGS, WATER PUMP(SER. NO. -005866).....	0417-2	BLADE PITCH CYLINDER CONTROL VALVE	
BEARINGS, WATER PUMP(SER. NO. 005867-).....	0417-4	WIRING HARNESS.....	1674-26
BEARINGS,CRANKSHAFT MAIN.....	0401-2	BLADE PITCH CYLINDER CONTROL VALVE HOSES.....	3260-10
BELLY PAN AREA WITH WASTE HANDLER		BLADE PITCH CYLINDER CONTROL VALVE SEAL	
PACKAGE, COVER FOR MAIN FRAME.....	1746-6	KIT.....	3260-12
BELLY PAN AREA WITH WASTE HANDLER		BLADE PITCH CYLINDER HOSE COVERS	
PACKAGE, SEALING FOR MAIN FRAME.....	1746-6	(SEMI-U AND U-BLADE).....	3240-7A
BELLY PANS, MAIN FRAME.....	1746-2	BLADE PITCH CYLINDER HOSES AND COVERS	
BELT PULLEY		(SEMI-U AND U-BLADE).....	3240-7A
(SERIAL NO. -005361).....	1830-2	BLADE PITCH CYLINDER KIT (MANUAL TO	
BELT PULLEY		HYDRUALIC CONVERSION).....	3240-7A
(SERIAL NO. 005362-).....	1830-4	BLADE POWER PITCH CYLINDER	
BELT PULLEY, ALTERNATOR (SN -005599).....	1672-2	(SERIAL NO. -006023).....	3240-8
BELT PULLEY, ALTERNATOR (SN 005600-).....	1672-4	BLADE QUICK DROP SWITCH.....	1674-6
BELT PULLEY, DRIVE		BLADE SPILL GUARD AND GUSSETS.....	3201-10
(SERIAL NO. 005362-).....	1830-4	BLADE TILT CYLINDER	
BELT TENSIONER, ALTERNATOR DRIVE.....	0423-6	(SERIAL NO. -006023).....	3240-8
		BLADE TILT CYLINDER BARREL	
		(SERIAL NO. -006023).....	3240-8

ALPHABETICAL INDEX - CONTINUED

	PAGE		PAGE
BLADE TILT CYLINDER BARREL		BRACKET REVERSE TRAVEL ALARM	
(SERIAL NO. 006024-)	3240-9A	(SER. NO. - 006199)	2004-8
BLADE TILT CYLINDER HOSE COVERS	3240-6	BRACKET, A/C COMPRESSOR MOUNTING	
BLADE TILT CYLINDER HYDRAULIC HOSES	3240-6	(SERIAL NO. -005361)	1830-2
BLADE TILT CYLINDER PARTS		BRACKET, A/C COMPRESSOR MOUNTING	
(SERIAL NO. 006024-)	3240-9A	(SERIAL NO. 005362-)	1830-4
BLADE TILT CYLINDER PISTON		BRACKET, AIR CONDITIONER COMPRESSOR	
(SERIAL NO. -006023)	3240-8	(SERIAL NO. -005361)	1830-2
BLADE TILT CYLINDER PISTON		BRACKET, AIR CONDITIONER COMPRESSOR	
(SERIAL NO. 006024-)	3240-9A	(SERIAL NO. 005362-)	1830-4
BLADE TILT CYLINDER REPAIR KIT		BRACKET, AIR CONDITIONER VAPOR CONDENSER	
(SERIAL NO. -006023)	3240-8	PARTS	1833-6
BLADE TILT CYLINDER REPAIR KIT		BRACKET, ALTERNATOR MOUNTING	0423-6
(SERIAL NO. 006024-)	3240-9A	BRACKET, ALTERNATOR MOUNTING	
BLADE TILT CYLINDER ROD		(S.N. -005599)	0423-2
(SERIAL NO. -006023)	3240-8	BRACKET, ALTERNATOR MOUNTING	
BLADE TILT CYLINDER ROD		(S.N. 005600-)	0423-4
(SERIAL NO. 006024-)	3240-9A	BRACKET, ALTERNATOR MOUNTING(SCRAPER	
BLADE TILT CYLINDER ROD GUIDE		PULLER PACKAGE	0423-6
(SERIAL NO. -006023)	3240-8	BRACKET, BATTERY HOLD DOWN	1671-4
BLADE TILT CYLINDER ROD GUIDE		BRACKET, CAB TILT CYLINDER LOCKING	1810-4
(SERIAL NO. 006024-)	3240-9A	BRACKET, CAB TILT CYLINDER PROTECTION	1810-4
BLADE, ANGLE	3201-12	BRACKET, ENGINE AIR CLEANER MOUNTING	0520-2
BLADE, SEMI U (165")	3201-8	BRACKET, ENGINE FUEL WATER SEPARATOR	
BLADE, U (170")	3201-6	(S.N. -005599)	0420-4
BLADE, WOODCHIP (ORDER FROM WELDCO-		BRACKET, ENGINE FUEL WATER SEPARATOR	
BEALES)	3201-6	(S.N.005600-)	0420-6
BLADES, WINDOW WIPER	1810-22	BRACKET, ENGINE LIFT	0404-2
BLOCK PLUGS, ENGINE CYLINDER	0404-4	BRACKET, ENGINE OIL COOLER	
BLOCK, ENGINE CYLINDER	0404-4	(SER. NO. -005599)	0419-4
BLOCK, RIPPER MANIFOLD	4260-2	BRACKET, FUEL FILTER MOUNTING	
BLOWER AND HEAT EXCHANGERS, HOUSING		(SN. 005600-)	0420-13A
(HEATER/AIR CONDITIONER) (SN -8100)	1830-10	BRACKET, HYDRAULIC OIL TEMPERATURE GAUGE	
BLOWER AND HEAT EXCHANGERS, HOUSING		(WITH WASTEHANDLER OR WOODCHIP)	1674-22
(HEATER/AIR CONDITIONER) (SN 8101-)	1830-12	BRACKET, MOUNTING, CAB HEATER BOX	1830-8
BOOT, AUXILIARY PILOT CONTROLLER, REAR	4260-4	BRACKET, MOUNTING, HYD. OIL COOLER FAN	
BOOT, ENGINE SPEED CONTROL LEVER	0515-4	MOTOR REVERSING VALVE	2160-20
BOOT, PILOT CONTROLLER		BRACKET, RADIATOR COOLANT FILTER	0510-16
(SCRAPER PULLER)	3215-6	BRACKET, TRACK CHAIN IDLER WHEEL YOKE	0130-16
BOOT, PILOT CONTROLLER		BRACKET, WATER SEPARATOR (S.N. -005599)	0420-4
(SER. NO. -007281)	3215-2	BRACKET, WINCH MOUNTING	4060-4
BOOT, PILOT CONTROLLER		BRACKET, WOODCHIP CLEANOUT	1746-4
(SER. NO. 007282-)	3215-4	BRACKET, WORK LIGHTS	1673-4
BOOT, RIPPER CONTROL LEVER	4260-4	BRACKET,ENGINE FUEL FILTER MOUNTING	
BOOT, SINGLE LEVER CONTROL		(SN. 005600-)	0420-13A
(SER. NO. -007281)	0315-2	BRACKET,ENGINE FUEL WATER SEPARATOR	
BOOT, SINGLE LEVER CONTROL (SERIAL NO. 0		(S.N. -005599)	0420-4
07282-) (SCRAPER PULLER)	0315-4	BRACKET,ENGINE PRE HEAT FUEL LINES	0420-18
BOOT, WINCH PILOT CONTROLLER	4060-2	BRACKET,TURBOCHARGER HEAT SHIELD	0416-10
BORE, HYDRAULIC CYLINDER, PIN PULLER	4201-11C	BRACKETS, BLADE LIFT CYLINDER	3260-4
BOTTOM GUARDS, MAIN FRAME	1746-2	BRACKETS, CAB PLATFORM	1810-4
BOTTOM PLATES, MAIN FRAME	1746-2	BRACKETS, CAB PLATFORM MOUNTING	1810-4
BOTTOM TANK GUARDS (WITH WOODCHIP OR		BRACKETS, ENGINE MOUNTING	0540-2
WASTE HANDLER PACKAGE)	1812-8	BRACKETS, PLATFORM	1812-2
BOWL, ENGINE FUEL WATER SEPARATOR		BRACKETS, RADIATOR	0510-4
(S.N. -005599)	0420-8	BRACKETS, TRACK IDLER	0130-14
BOWL, FUEL WATER SEPARATOR		BRAKE ASSEMBLY, FINAL DRIVE	0201-10
(S.N. -005599)	0420-8	BRAKE ASSEMBLY, FINAL DRIVE PARK	0201-8
BOX COMPONENT PARTS, SPLITTER	0841-4	BRAKE COMPLETE, FINAL DRIVE HOUSING	0201-10
BOX, CAB HEATER	1830-8	BRAKE COMPLETE, FINAL DRIVE PARK	0201-8
BRACE (MANUAL PITCH JACK)		BRAKE COMPONENT PARTS, FINAL DRIVE	
(ANGLE BLADE)	3240-20	HOUSING	0201-10
BRACKET BACKUP ALARM	2004-2	BRAKE COVER, FINAL DRIVE	0201-8
BRACKET BACKUP ALARM		BRAKE DISKS, FINAL DRIVE	0201-10
(SER. NO. - 006199)	2004-8	BRAKE HOUSING, FINAL DRIVE	0201-10
BRACKET REVERSE TRAVEL ALARM	2004-2	BRAKE LOCK LEVER, PARK	1810-6

ALPHABETICAL INDEX - CONTINUED

	PAGE		PAGE
BRAKE PEDAL COMPLETE (SER. NO. - 007908)	1115-2	BUSHING, TRACK CHAIN IDLER WHEEL	0130-16
BRAKE PEDAL COMPLETE (SER. NO. 007909 -)	1115-3A	BUSHING, TRACK IDLER	0130-14
BRAKE PEDAL COMPONENT PARTS (SER. NO. - 007908)	1115-2	BUSHINGS, CROSSBAR (S.N. -007391)	0135-2
BRAKE PEDAL COMPONENT PARTS (SER. NO. 007909 -)	1115-3A	BUSHINGS, CROSSBAR (S.N. 007392-)	0135-4
BRAKE PEDAL COVER (SER. NO. - 007908)	1115-2	BUSHINGS, ONE TOOTH RIPPER	4201-2
BRAKE PEDAL COVER (SER. NO. 007909 -)	1115-3A	BUSHINGS, SLIDE PIN, RIGHT ANGLE BLADE PUSH BEAM	3240-22
BRAKE PEDAL WIRING HARNESS (SER. NO. - 007908)	1115-2	BUSHINGS, THREE TOOTH RIPPER	4201-4
BRAKE PEDAL WIRING HARNESS (SER. NO. 007909 -)	1115-3A	BUSHINGS, TRACK CHAIN	0132-2
BRAKE PISTON, FINAL DRIVE	0201-10	BUTTON, BUCKET FLOAT POSITION PUSH	1674-14
BRAKE PLATES, FINAL DRIVE	0201-10	BUTTON, HORN	1674-14
BRAKE SENSOR, PARK	1810-6	BUTTON, LOW TRAVEL SPEED PUSH	1674-14
BRAKE SWITCH, PARK	1810-6	BYPASS START LABEL	1322-2
BRAKE, FINAL DRIVE PARK	0201-8	BYPASS VALVE, HYDRAULIC OIL RETURN FILTER	2160-12
BREAKER FOR REAR OPTIONAL LIGHTS, CIRCUIT	1673-2	C	
BREAKER, CIRCUIT 3AMP, 5AMP, 8AMP, 10AMP , 20AMP, 25AMP, INSTRUMENT PANEL	1674-16	C-FRAME GUARDS LEFT (ANGLE BLADE)	3240-24
BREAKER, CIRCUIT, POWER SUPPLY/GLOW PLUG	1671-2	C-FRAME GUARDS, RIGHT (ANGLE BLADE)	3240-26
BREAKER, FRONT OPTIONAL WORK LIGHTS	1673-4	CAB	1810-30
BREAKERS, CIRCUIT POWER SUPPLY/GLOW PLUG	1671-2	CAB A/C COMPONENT PARTS (SERIAL NO. -008100)	1830-10
BREATHER TUBE,ENGINE CRANKCASE	0407-4	CAB A/C COMPONENT PARTS (SERIAL NO. 008101-)	1830-12
BREATHER VALVE, HYDRAULIC OIL RESERVOIR	2160-12	CAB A/C ELECTRICAL CONNECTORS	1674-32
BREATHER,ENGINE CRANKCASE	0407-4	CAB AND CAB MOUNTING	1810-30
BREATHER,ENGINE FLYWHEEL HOUSING	0433-4	CAB CONNECTORS (SERIAL NO. -006199)	1674-12
BUCKET FLOAT POSITION PUSH BUTTON	1674-14	CAB CONNECTORS (SERIAL NO. 006200-)	1674-13A
BUCKET POSITIONER ELECTRICAL CONNECTORS	1674-32	CAB DOME LIGHT (SN. 006199-)	1674-2
BULB, CAB DOME LIGHT (SN. 006199-)	1674-2	CAB DOME LIGHT (SN. 006200-)	1674-3A
BULB, CAB DOME LIGHT (SN. 006200-)	1674-3A	CAB DOOR AND IGNITION SWITCH KEY	1674-14
BULB, GRILLE MOUNTED LIGHT	1673-6	CAB DOOR HANDLES	1810-26
BULB, TAIL LAMP (SN. 006199-)	1674-2	CAB DOOR HINGES	1810-14
BULB, VEHICLE WORK LIGHT	1673-2	CAB DOOR LATCHES	1810-26
BULB, WINDSHIELD WIPER SWITCH, LEFT (SN. 006199-)	1674-4	CAB DOOR LOCK AND IGNITION SWITCH KEY	1810-26
BULB, WINDSHIELD WIPER SWITCH, LEFT (SN. 006200-)	1674-5A	CAB DOOR LOCK COVER	1810-26
BULB, WINDSHIELD WIPER SWITCH, RIGHT (SN. 006199-)	1674-4	CAB DOOR LOCKS	1810-26
BULB, WINDSHIELD WIPER SWITCH, RIGHT (SN. 006200-)	1674-5A	CAB DOORS	1810-14
BULB, WINDSHIELD WIPER WASHER SWITCH (SN. 006199-)	1674-4	CAB ELECTRICAL CONNECTORS	1674-30
BULB, WINDSHIELD WIPER WASHER SWITCH (SN. 006200-)	1674-5A	CAB FRESH AIR FILTER ELEMENT	1810-18
BULB, WORKING LIGHTS SWITCH (SN. 006199-)	1674-4	CAB FRESH AIR FILTER ELEMENT FOR DUST EJECTION SYSTEM ON WASTE HANDLER	1810-18
BULB, WORKING LIGHTS SWITCH (SN. 006200-)	1674-5A	CAB HEATER AND A/C CONTROLS (SER. NO. - 007908)	1831-2
BUMPER, WOODCHIP CLEANOUT	1746-4	CAB HEATER AND A/C CONTROLS (SER. NO. 007909 -)	1831-4
BUSHING HOLDER, TRACK FLANGE ROLLER (S.N. - 005801)	0130-8	CAB HEATER BOX	1830-8
BUSHING HOLDER, TRACK FLANGE ROLLER (S.N. 005802 -)	0130-10	CAB HEATER BOX MOUNTING BRACKET	1830-8
BUSHING KIT, TRACK CHAIN PIN AND	0132-2	CAB HEATER COMPONENT PARTS (SERIAL NO. -008100)	1830-10
BUSHING, AIR CONDITIONER VAPOR CONDENSER	1833-2	CAB HEATER COMPONENT PARTS (SERIAL NO. 008101-)	1830-12
BUSHING, BLADE LIFT CYLINDER YOKE	3201-2	CAB HEATER ELECTRICAL CONNECTORS	1674-32
		CAB HEATER HOSES	1830-8
		CAB HEATER VENTS	1830-8
		CAB HYDRAULIC TILT	1810-2
		CAB LEFT CONSOLE	1810-6

ALPHABETICAL INDEX - CONTINUED

	PAGE		PAGE
CAB LIGHTS (2) FIELD INSTALLED (REAR).....	1673-2	CAB STORAGE COMPARTMENT COMPONENT PARTS	1810-24
CAB MOLDINGS	1810-28	CAB STORAGE COMPARTMENT COVER	1810-24
CAB MOUNTING	1810-30	CAB STORAGE COMPARTMENT HINGE	1810-24
CAB NOISE INSULATION	1810-24	CAB TILT CYLINDER.....	1810-4
CAB NOISE INSULATOR	1810-24	CAB TILT CYLINDER KIT	1810-4
CAB OVERHEAD CONSOLE WARNING LIGHTS CIRC UIT BREAKER (SN. 006199-)	1674-4	CAB TILT CYLINDER LOCK.....	1810-4
CAB OVERHEAD CONSOLE WARNING LIGHTS CIRC UIT BREAKER (SN. 006200-).....	1674-5A	CAB TILT CYLINDER PROTECTION BRACKET	1810-4
CAB OVERHEAD CONSOLE WARNING LIGHTS RELA Y (SN. 006199-)	1674-4	CAB TILT HYDRAULIC PUMP	1810-2
CAB OVERHEAD CONSOLE WARNING LIGHTS RELA Y (SN. 006200-)	1674-5A	CAB TILT PUMP LEVER.....	1810-2
CAB OVERHEAD CONSOLE WIRING HARNESSSES (SERIAL NO. -006199).....	1674-12	CAB TILT TOOL	2005-2
CAB OVERHEAD CONSOLE WIRING HARNESSSES (SERIAL NO. 006200-).....	1674-13A	CAB TIPPING PROCEDURE LABEL	1322-2
CAB OVERHEAD CONSOLE WORKING LIGHTS CIRC UIT BREAKER (SN. 006199-)	1674-4	CAB TO HYDRAULIC OIL TEMPERATURE GAUGE H ARNESS	1674-22
CAB OVERHEAD CONSOLE WORKING LIGHTS CIRC UIT BREAKER (SN. 006200-)	1674-5A	CAB WEATHERSTRIP	1810-24
CAB OVERHEAD CONSOLE WORKING LIGHTS RELA Y ((SN. 006200-)	1674-5A	CAB WINDOW WASHER FITTINGS	1810-18
CAB OVERHEAD CONSOLE WORKING LIGHTS RELA Y (SN. 006199-)	1674-4	CAB WINDOW WASHER FLUID PUMP	1810-18
CAB PLATES(WASTE HANDLER)	1810-12	CAB WINDOW WASHER FLUID RESERVOIR	1810-18
CAB PLATFORM	1810-4	CAB WINDOW WASHER FLUID RESERVOIR CAP	1810-18
CAB PLATFORM AIR RECIRCULATION FILTER (SERIAL NO. -007908).....	1810-10	CAB WINDOW WASHER FLUID RESERVOIR CAP KEY	1810-18
CAB PLATFORM AIR RECIRCULATION FILTER (SERIAL NO. 007909-).....	1810-11A	CAB WINDOW WASHER HOSES	1810-18
CAB PLATFORM ATTACHING HARDWARE	1810-8	CAB WIRING HARNESS (SERIAL NO. -006199).....	1674-12
CAB PLATFORM BRACKETS	1810-4	CAB WIRING HARNESS (SERIAL NO. 006200-).....	1674-13A
CAB PLATFORM COMPLETE.....	1810-4	CAB WIRING HARNESS CONNECTORS.....	1674-28
CAB PLATFORM COMPONENT PARTS.....	1810-4	CABLE CIRCUIT BREAKER TO BATTERY	1671-2
CAB PLATFORM COMPONENT PARTS.....	1810-6	CABLE, STARTER	1671-2
CAB PLATFORM COMPONENT PARTS.....	1810-8	CABLE, STARTER GROUND	1674-6
CAB PLATFORM CONNECTING LINK	1810-8	CABLES, BATTERY	1671-2
CAB PLATFORM COVERS	1810-6	CABLES, CAB HEATER AND A/C CONTROLS (SER. NO. - 007908)	1831-2
CAB PLATFORM FLOOR MATS (SERIAL NO. -007908).....	1810-10	CABLES, CAB HEATER AND A/C CONTROLS (SER. NO. 007909 -)	1831-4
CAB PLATFORM FLOOR MATS (SERIAL NO. 007909-).....	1810-11A	CAMSHAFT	0402-2
CAB PLATFORM FLOOR PLATE (SERIAL NO. -007908).....	1810-10	CAMSHAFT GEARS	0402-2
CAB PLATFORM FLOOR PLATE (SERIAL NO. 007909-).....	1810-11A	CAP, BEARING, MANUAL PITCH JACK (ANGLE BLADE PUSH BEAM).....	3240-20
CAB PLATFORM FOOTREST	1810-6	CAP, CAB WINDOW WASHER FLUID RESERVOIR.....	1810-18
CAB PLATFORM MOUNTING BRACKETS.....	1810-4	CAP, CIRCUIT BREAKER.....	1671-2
CAB PLATFORM PROTECTION PLATE SEALS.....	1810-9A	CAP, ENGINE OIL FILLER TUBE	0409-8
CAB PLATFORM PROTECTION PLATES.....	1810-9A	CAP, FAST FUELING COVER	0560-8
CAB PLATFORM SEALS.....	1810-4	CAP, FAST FUELING FUEL TANK FILLER	0560-8
CAB REAR CONSOLE	1810-6	CAP, FRONT CROSSBAR SHAFT	0130-2
CAB REAR LIGHTS HARNESS (SN. 006199-).....	1674-2	CAP, FUEL TANK	0560-2
CAB REAR LIGHTS HARNESS (SN. 006200-).....	1674-3A	CAP, SPLITTER BOX FILLER.....	0841-4
CAB REAR WINDOW PROTECTION SCREEN.....	1814-6	CAP,ENGINE OIL FILLER.....	0409-8
CAB REMOVAL EYEBOLT	2005-2	CAP,RADIATOR	0510-6
CAB RIGHT CONSOLE	1810-6	CAPS, CYLINDER BLOCK MAIN BEARING.....	0404-4
CAB SEALING TRIM	1810-24	CAPSCREWS, TRACK CHAIN MASTER.....	0132-2
CAB SEALS FOR WASTE HANDLER UNITS	1810-12	CARRIER ROLLER AND COMPONENT PARTS, TRACK CHAIN	0130-18
CAB SLIDING REAR WINDOW.....	1814-4	CARRIER ROLLER AND COMPONENT PARTS, TRACK CHAIN (SCRAPER PULLER)	0130-20
CAB SLIDING REAR WINDOW ADHESIVE	1814-4	CARRIER ROLLER COMPLETE, TRACK CHAIN.....	0130-6
CAB SLIDING SIDE WINDOW	1814-2	CARRIER ROLLER COVER, TRACK CHAIN.....	0130-18
CAB SLIDING SIDE WINDOW ADHESIVE	1814-2	CARRIER ROLLER COVER, TRACK CHAIN (SCRAPER PULLER).....	0130-20
CAB SOUND INSULATION	1810-24	CARRIER ROLLER RETAINER, TRACK CHAIN	0130-18
		CARRIER ROLLER RETAINER, TRACK CHAIN (SCRAPER PULLER).....	0130-20
		CARRIER ROLLER SEALS, TRACK CHAIN.....	0130-18
		CARRIER ROLLER SEALS, TRACK CHAIN (SCRAPER PULLER).....	0130-20
		CARRIER ROLLER SHAFT, TRACK CHAIN	0130-18

ALPHABETICAL INDEX - CONTINUED

	PAGE		PAGE
CARRIER ROLLER SHAFT, TRACK CHAIN (SCRAPER PULLER).....	0130-20	CIRCUIT BREAKER, ELECTRICAL OUTLET 24 VO LT.....	1674-16
CARRIER ROLLER SUPPORT, TRACK CHAIN	0130-6	CIRCUIT BREAKER, FRONT OPTIONAL WORK LIGHTS.....	1673-4
CARRIER ROLLER-ROLLER BEARING, TRACK CHAIN	0130-18	CIRCUIT BREAKER, GRILLE MOUNTED LIGHTS	1673-6
CARRIER ROLLER-ROLLER BEARING, TRACK CHAIN (SCRAPER PULLER)	0130-20	CIRCUIT BREAKER, RADIATOR REVERSING FAN (W/WASTE HANDLER).....	1674-20
CASE DRAIN FILTER, HYDROSTATIC MOTOR	0360-42	CIRCUIT BREAKER, RADIO	1674-16
CASE DRAIN HOSE, MAIN HYDRAULIC PUMP	2163-10	CIRCUIT BREAKER, REVERSING RADIATOR AND OIL COOLER FANS (W/ WASTE HANDLER)	1674-20
CASE DRAIN HYDRAULIC HOSE, HYDRAULIC OIL COOLER FAN MOTOR (STANDARD FAN DRIVE).....	2163-2	CIRCUIT BREAKER, ROOF PANEL.....	1674-16
CENTAFLEX COUPLING, ENGINE.....	0752-2	CIRCUIT BREAKER, SHUT OFF DIESEL ENGINE.....	1674-16
CENTER TRACK GUIDE AND/OR ROCK GUARD SPACER	0138-2	CIRCUIT BREAKER, STARTER LOCKOUT	1674-16
CENTER TRACK GUIDES	0138-2	CIRCUIT BREAKER, WIPER (SN. 006199-).....	1674-4
CENTERING CONTROL, HYDROSTATIC PUMP	0360-8	CIRCUIT BREAKER, WIPER (SN. 006200-).....	1674-5A
CENTRAL WIRING HARNESS ELECTRICAL CONNECTORS	1674-28	CIRCUIT BREAKER,WITH AUTOMATIC REV.FAN (WITH WOODCHIP OR WASTE HANDLING)	0510-14
CHAIN , TRACK.....	0132-2	CIRCUIT BREAKERS POWER SUPPLY/GLOW PLUG	1671-2
CHAIN ADJUSTER/TENSIONER COMPLETE ASSEMBLY	0130-4	CIRCUIT BREAKERS, INSTRUMENT PANEL	1674-16
CHAIN ADJUSTER/TENSIONER COMPLETE, TRACK.....	0130-4	CIRCUIT RELIEF VALVE, MAIN HYDRAULIC CONTROL VALVE (DOZER)	2160-22
CHAIN ADJUSTER/TENSIONER GREASE FITTING, TRACK	0130-4	CIRCUIT RELIEF VALVE, MAIN HYDRAULIC CONTROL VALVE (SCRAPER PULLER)	2160-24
CHAIN BUSHINGS, TRACK	0132-2	CLAMP, AIR CONDITIONER VAPOR CONDENSOR.....	1833-4
CHAIN CARRIER ROLLER COMPLETE, TRACK	0130-6	CLAMP, AIR CONDITIONER VAPOR CONDENSER	1833-2
CHAIN GUIDES, FRONT TRACK.....	0130-6	CLAMP,FUEL INJECTION LINE	0413-6
CHAIN MASTER CAPSCREWS, TRACK.....	0132-2	CLAMPS, HOSES - HYDRAULIC	2163-16
CHAIN MASTER LINK, TRACK.....	0132-2	CLEANING HOLE, WOODCHIP SCOOP.....	1746-4
CHAIN PIN AND BUSHING KIT, TRACK.....	0132-2	CLEANOUT, WOODCHIP	1746-4
CHAIN PINS, TRACK	0132-2	CLIMATE CONTROL KNOBS(HEATER AND A/C) (SER. NO. - 007908)	1831-2
CHAIN SEALS, TRACK	0132-2	CLIMATE CONTROL KNOBS(HEATER AND A/C) (SER. NO. 007909 -)	1831-4
CHAIN TENSION CAUTION LABEL.....	1322-2	COAL DEFLECTOR, UNDERCARRIAGE (WITH COAL HANDLING PACKAGE) GUARD	0138-4
CHANGE FINAL DRIVE SEAL OIL LABEL	1322-2	COAL OR WASTE HANDLING PACKAGE HEAVY DUTY GRILLE	1921-6
CHARGE INDICATOR CIRCUIT BREAKER.....	1674-16	COAL OR WOODCHIP PACKAGE HOOD	1910-4
CHARGE PRESSURE RELIEF VALVE, HYDROSTATIC PUMP	0360-6	COIL, MAGNETIC MULTIWAY VALVE	4060-8
CHARGE PRESSURE RELIEF VALVE, COLD START	0360-36	COLD START CHARGE PRESSURE RELIEF VALVE	0360-36
CHARGE PUMP COUPLING, HYDROSTATIC.....	0360-16	COLD START VALVE	0360-36
CHARGE PUMP, HYDROSTATIC	0360-16	COLD START VALVE HYDROSTATIC HOSES.....	0360-34
CHECK VALVE (WINCH HYDRAULIC CONTROL VALVE).....	4060-3A	COLD START VALVE TO HYDRAULIC OIL COOLER HYDRAULIC HOSE (STANDARD FAN DRIVE)	2163-2
CHECK VALVE RIPPER TOOTH PIN PULLER.....	4201-10	COLD START VALVE TO HYDRAULIC OIL COOLER HYDRAULIC HOSE(REVERSIBLE FAN DRIVE).....	2163-4
CHECK VALVE, HYDRAULIC OIL COOLER	2160-19I	COLD WEATHER START; CIRCUIT BREAKER.....	1674-16
CIRCUIT BREAKER CAP	1671-2	COMPARTMENT, CAB STORAGE	1810-24
CIRCUIT BREAKER FOR REAR OPTIONAL LIGHTS	1673-2	COMPLETE CYLINDER HEAD	0409-2
CIRCUIT BREAKER LABEL	1322-2	COMPLETE ENGINE.....	0404-2
CIRCUIT BREAKER TO BATTERY CABLE.....	1671-2	COMPLETE ENGINE REPLACEMENT SEAL KIT	0452-2
CIRCUIT BREAKER 3AMP, 5AMP, 8AMP, 10AMP, 20AMP AND 25AMP, INSTRUMENT PANEL	1674-16	COMPLETE INSTRUMENT PANEL.....	1674-6
CIRCUIT BREAKER, AIR CONDITIONER	1674-16	COMPONENTS, CYLINDER, ONE TOOTH RIPPER	4201-3A
CIRCUIT BREAKER, BACKUP ALARM	1674-16	COMPONENTS, FAN DRIVE HYDRAULIC PUMP.....	2160-11C
CIRCUIT BREAKER, CAB OVERHEAD CONSOLE WA RNING LIGHTS (SN. 006199-)	1674-4	COMPONENTS, RIPPER CYLINDER.....	4201-5A
CIRCUIT BREAKER, CAB OVERHEAD CONSOLE WA RNING LIGHTS (SN. 006200-)	1674-5A	COMPRESSION SPRINGS, FINAL DRIVE BRAKE.....	0201-10
CIRCUIT BREAKER, CAB OVERHEAD CONSOLE WO RKING LIGHTS (SN. 006199-)	1674-4	COMPRESSOR (AIR SUSPENSION), SEAT	1821-4
CIRCUIT BREAKER, CAB OVERHEAD CONSOLE WO RKING LIGHTS (SN. 006200-)	1674-5A	COMPRESSOR BELT, A/C (SERIAL NO. -005361).....	1830-2
CIRCUIT BREAKER, CHARGE INDICATOR.....	1674-16	COMPRESSOR BRACKET, A/C MOUNTING (SERIAL NO. -005361).....	1830-2
CIRCUIT BREAKER, COLD WEATHER START	1674-16	COMPRESSOR BRACKET, AIR CONDITIONER (SERIAL NO. -005361).....	1830-2
CIRCUIT BREAKER, DOME LIGHT.....	1674-16	COMPRESSOR BRACKET, AIR CONDITIONER (SERIAL NO. 005362-)	1830-4
CIRCUIT BREAKER, ELECTRICAL (W/SCRAPER PACKAGE)	1674-21A		
CIRCUIT BREAKER, ELECTRICAL (AIR CONDITIONING).....	1674-21C		

ALPHABETICAL INDEX - CONTINUED

	PAGE		PAGE
COMPRESSOR DRIVE BELT, AIR CONDITIONER (SERIAL NO. -005361).....	1830-2	CONTROL VALVE TO HYDRAULIC PUMP HOSE (SCRAPER PULLER).....	2163-18
COMPRESSOR DRIVE BELT, AIR CONDITIONER (SERIAL NO. 005362-).....	1830-4	CONTROL VALVE, AUXILIARY HYDRAULIC (SCRAPER PULLER).....	2160-26
COMPRESSOR MOUNTING BRACKET, A/C (SERIAL NO. -005361).....	1830-2	CONTROL VALVE, AUXILIARY SECTION HYDRAULIC.....	4260-2
COMPRESSOR MOUNTING BRACKET, A/C (SERIAL NO. 005362-).....	1830-4	CONTROL VALVE, BLADE PITCH CYLINDER.....	3260-12
COMPRESSOR, A/C (SERIAL NO. -005361).....	1830-2	CONTROL VALVE, FAN DRIVE PUMP.....	2160-11A
COMPRESSOR, A/C (SERIAL NO. 005362-).....	1830-4	CONTROL VALVE, PIN PULLER FOR RIPPER TOOTH.....	4201-10
COMPRESSOR, AIR CONDITIONER (SERIAL NO. -005361).....	1830-2	CONTROL VALVE, RIPPER HYDRAULIC.....	4260-2
COMPRESSOR, AIR CONDITIONER (SERIAL NO. 005362-).....	1830-4	CONTROL VALVE, SCRAPER APRON.....	2160-28
CONDENSER (AIR CONDITIONING).....	1833-2	CONTROL, FNR (SER. NO. -007281).....	0315-2
CONDENSER ASSEMBLY, AIR CONDITIONER.....	1833-4	CONTROL, FNR (SCRAPER PULLER) (SERIAL NO. 007282-).....	0315-4
CONDENSER WIRING HARNESS, AIR CONDITIONING.....	1833-2	CONTROL, SINGLE LEVER (SER. NO. -007281).....	0315-2
CONDENSOR COMPONENT PARTS, AIR CONDITIONER.....	1833-6	CONTROL, SINGLE LEVER (SCRAPER PULLER) (SERIAL NO. 007282-).....	0315-4
CONNECTING LINK, CAB PLATFORM.....	1810-8	CONTROLLER, AUTOMATIC REVERSIBLE FAN (WITH WOODCHIP OR WASTE HANDLER).....	0510-14
CONNECTING ROD BEARING, ENGINE.....	0403-2	CONTROLLER, AUXILIARY PILOT, REAR.....	4260-4
CONNECTING ROD, ENGINE PISTON.....	0403-2	CONTROLLER, HYDRAULIC FAN DRIVE.....	1674-8
CONNECTION/TRUNNION BALL, PUSHBEAM.....	0130-2	CONTROLLER, HYDRAULIC FAN DRIVE.....	1674-10
CONNECTOR, ONE TOOTH RIPPER.....	4201-8	CONTROLLER, HYDRAULIC FAN DRIVE, WIRING HARNESS.....	1674-8
CONNECTOR, SHANK, THREE TOOTH RIPPER.....	4201-6	CONTROLLER, HYDRAULIC FAN DRIVE, WIRING HARNESS.....	1674-10
CONNECTORS; INSTRUMENT PANEL.....	1674-30	CONTROLLER, PILOT PILOT CONTROLLER AND FITTINGS (SERIAL.....	3215-2
CONNECTORS, AIR INLET MANIFOLD REAR AND TURBOCHARGER SIDE.....	0414-6	CONTROLLER, PILOT PILOT CONTROLLER AND FITTINGS (SERIAL.....	3215-4
CONNECTORS, BEACON LIGHT WIRING.....	2004-6	CONTROLLER, PILOT (SCRAPER PULLER).....	3215-6
CONNECTORS, ELECTRICAL WIRING HARNESS.....	1674-28	CONTROLLER, PILOT; ELECTRICAL CONNECTOR.....	1674-38
CONNECTORS, ELECTRICAL (W/SCRAPER PACKAGE).....	1674-21A	CONTROLLER, PILOT, WINCH.....	4060-2
CONNECTORS, ELECTRICAL (AIR CONDITIONING).....	1674-21C	CONTROLLER, RIPPER.....	4260-4
CONNECTORS, ELECTRICAL; DIESEL ENGINE RPM, TRAVEL MOTOR, SUPPORT SHAFT.....	1674-36	CONTROLLER, TRANSMISSION.....	0375-2
CONNECTORS, ELECTRICAL; POTENTIOMETER PEDAL, AND TRAVEL CONTROLLER.....	1674-34	CONTROLLER, TRAVEL ELECTRICAL CONNECTORS.....	1674-34
CONSOLE WIRING HARNESS COVER, UPPER.....	1810-16	CONTROLS (CAB HEATER WITH AIR CONDITIONING) (SER. NO. - 007908).....	1831-2
CONSOLE, LEFT.....	1810-6	CONTROLS (CAB HEATER WITH AIR CONDITIONING) (SER. NO. 007909 -).....	1831-4
CONSOLE, REAR.....	1810-6	CONVERSION KIT, REVERSIBLE FAN, MANUAL TO AUTOMATIC.....	0510-12
CONSOLE, RIGHT.....	1810-6	COOLANT FILTER, RADIATOR.....	0510-16
CONTROL KNOBS, CLIMATE(HEATER AND A/C) (SER. NO. - 007908).....	1831-2	COOLANT HEATER, ENGINE.....	0505-2
CONTROL KNOBS, CLIMATE(HEATER AND A/C) (SER. NO. 007909 -).....	1831-4	COOLANT TEMPERATURE GAUGE, ENGINE.....	1674-14
CONTROL LEVER BOOT, RIPPER.....	4260-4	COOLER, ENGINE OIL (SER. NO. 005600-).....	0419-6
CONTROL LEVER COMPONENTS, RIPPER.....	4260-4	COOLER, HYDRAULIC/HYDROSTATIC OIL.....	2160-19I
CONTROL LEVER HANDLE, RIPPER.....	4260-4	CORE, HEAT EXCHANGERS/BLOWERS (HEATER/AIR CONDITIONER) (SN -8100).....	1830-10
CONTROL LEVER(COMPLETE).....	1810-6	CORE, HEAT EXCHANGERS/BLOWERS (HEATER/AIR CONDITIONER) (SN 8101-).....	1830-12
CONTROL LEVER, RIPPER HYDRAULIC.....	4260-4	COUNTERWEIGHT (6614 LBS), REAR.....	1749-2
CONTROL LEVER, SPEED.....	1810-6	COUNTERWEIGHT (9240 LBS), REAR.....	1749-2
CONTROL LEVER, TRANSMISSION (SER. NO. -007281).....	0315-2	COUNTERWEIGHT AND STORAGE AREA(WASTE HANDLER PACKAGE).....	1749-4
CONTROL LEVER, TRANSMISSION (SERIAL NO. 007282-).....	0315-4	COUNTERWEIGHT(WASTE HANDLER PACKAGE).....	1749-4
CONTROL PISTONS, MAIN HYDRAULIC PUMP.....	2160-6	COUNTERWEIGHTS, FRONT GRILLE HOUSING.....	1921-2
CONTROL VALVE COMPONENTS, AUXILIARY.....	4260-2	COUPLING, ENGINE CENTAFLEX.....	0752-2
CONTROL VALVE COMPONENTS, RIPPER.....	4260-2	COUPLING, MAIN HYDRAULIC PUMP.....	2160-2
CONTROL VALVE FITTINGS, SCRAPER APRON.....	2160-28	COUPLING, TEST PORT.....	2163-12
CONTROL VALVE HOSES, PITCH CYLINDER.....	3260-10	COVER FOR MAIN FRAME BELLY PAN AREA WITH WASTE HANDLER PACKAGE.....	1746-6
CONTROL VALVE HOSES, SCRAPER APRON.....	2160-28	COVER LATCH, ENGINE.....	1910-2
CONTROL VALVE HYDRAULIC HOSES, SCRAPER PULLER.....	2163-18	COVER PLATE, WATER PUMP(SER.NO. -005866).....	0417-2

ALPHABETICAL INDEX - CONTINUED

	PAGE		PAGE
COVER PLATE, WATER PUMP(SER.NO. 005867-)	0417-4	COVER,ENGINE FLYWHEEL HOUSING ACESS	0433-6
COVER; COUNTERWEIGHT (WASTE HANDLER PACKAGE)	1749-4	COVER,ENGINE FUEL WATER SEPARATOR HOUSING (S.N.005600-)	0420-10
COVER, AIR CONDITIONER COMPRESSOR (SERIAL NO. -005361)	1830-2	COVERS, BLADE PITCH CYLINDER HOSE (SEMI-U AND U-BLADE)	3240-7A
COVER, AIR CONDITIONER COMPRESSOR (SERIAL NO. 005362-)	1830-4	COVERS, BLADE TILT CYLINDER HOSE	3240-6
COVER, AIR CONDITIONER VAPOR CONDENSER	1833-4	COVERS, CAB PLATFORM	1810-6
COVER, BRAKE PEDAL (SER. NO. - 007908)	1115-2	COVERS, DOOR POST	1810-12
COVER, BRAKE PEDAL (SER. NO. 007909 -)	1115-3A	COVERS, ENGINE COMPARTMENT	1910-2
COVER, CAB DOOR LOCK	1810-26	COVERS, HOSE, HYDRAULIC TILT CYLINDER, RIGHT ANGLE BLADE PUSH BEAM	3240-22
COVER, CAB PLATFORM AIR RECIRCULATION FILTER (SERIAL NO. -007908)	1810-10	COVERS, MAIN FRAME BOTTOM	1746-2
COVER, CAB PLATFORM AIR RECIRCULATION FILTER (SERIAL NO. 007909-)	1810-11A	COVERS, MAIN FRAME REAR	1910-6
COVER, CAB STORAGE COMPARTMENT	1810-24	COVERS, OPERATOR STATION DOOR POST	1810-12
COVER, ENGINE FLYWHEEL HOUSING	0433-4	COVERS, PLATFORM	1812-2
COVER, ENGINE FRONT	0402-8	COVERS, RADIATOR	0510-4
COVER, ENGINE FUEL WATER SEPARATOR HOUSING (S.N.-005599)	0420-8	COVERS, TRACK FRAME, (SCRAPER PULLER)	0130-2
COVER, FINAL DRIVE BRAKE	0201-8	CRANKCASE BREATHER,ENGINE	0407-4
COVER, FUEL TANK ACCESS	0560-2	CRANKSHAFT	0401-2
COVER, GRILLE	1921-4	CRANKSHAFT DAMPER (SER. NO. -005599)	0429-2
COVER, HYDRAULIC OIL COOLER HOUSING (WOODCHIP OR WASTE HANDLER)	2160-19G	CRANKSHAFT DAMPER (SER. NO. 005600-)	0429-4
COVER, HYDRAULIC PITCH CYLINDER (ANGLE BLADE)	3240-21A	CRANKSHAFT GEAR	0401-2
COVER, HYDRAULIC TILT CYLINDER (ANGLE BLADE)	3240-23A	CRANKSHAFT MAIM BEARING THRUST WASHER	0401-2
COVER, INSTRUMENT PANEL	1816-2	CRANKSHAFT MAIN BEARINGS	0401-2
COVER, LEFT PIVOT SHAFT (FOR USE WITH MANUAL PITCH JACK)(SEMI-U AND U-BLADE)	3240-2	CRANKSHAFT PULLEY (SER. NO. -005599)	0429-2
COVER, LEFT PUSH BEAM HYDRAULIC HOSE(FOR USE WITH HYDRAULIC PITCH CYLINDER)	3240-3A	CRANKSHAFT PULLEY (SER. NO. 005600-)	0429-4
COVER, MAIN HYDRAULIC CONTROL VALVE (DOZER)	2160-22	CRANKSHAFT SEAL	0401-2
COVER, MAIN HYDRAULIC CONTROL VALVE (SCRAPER PULLER)	2160-24	CROSSBAR	0135-2
COVER, RIGHT PIVOT SHAFT (SEMI-U-AND U-BLADE)	3240-4	(S.N. -007391)	0135-2
COVER, ROCKER ARM	0409-8	CROSSBAR	0135-4
COVER, ROLLER FRAME, LEFT PUSH BEAM (ANGLE BLADE)	3240-24	(S.N. 007392-)	0135-4
COVER, ROLLER FRAME, RIGHT PUSH BEAM (ANGLE BLADE)	3240-26	CROSSBAR BEARINGS	0135-2
COVER, SEAT	1821-6	(S.N. -007391)	0135-2
COVER, SPEAKER (SN. 006199-)	1674-2	CROSSBAR BEARINGS	0135-4
COVER, SPEAKER (SN. 006200-)	1674-3A	(S.N. 007392-)	0135-4
COVER, SPROCKET	0130-2	CROSSBAR BUSHINGS	0135-2
COVER, TRACK CHAIN CARRIER ROLLER	0130-18	(S.N. -007391)	0135-2
COVER, TRACK CHAIN CARRIER ROLLER (SCRAPER PULLER)	0130-20	CROSSBAR BUSHINGS	0135-4
COVER, TRACK FRAME	0130-4	(S.N. 007392-)	0135-4
COVER, TRACK IDLER WHEEL	0130-14	CROSSBAR ISOLATOR	0135-2
COVER, TRUNNION/CONNECTION BALL HOLE PUSHBEAM (SCRAPER PULLER)	0130-2	(S.N. -007391)	0135-2
COVER, UPPER CONSOLE WIRING HARNESS	1810-16	CROSSBAR ISOLATOR	0135-4
COVER, WINDSHIELD WASHER PUMP	1810-18	(S.N. 007392-)	0135-4
COVER, WINDSHIELD WASHER RESERVOIR	1810-18	CROSSBAR PINS	0135-2
COVER, WINDSHIELD WIPER MOTOR	1810-22	(S.N. -007391)	0135-2
COVER, WIPER MOTOR	1810-16	CROSSBAR PINS	0135-4
COVER, WIPER MOTOR	1810-20	(S.N. 007392-)	0135-4
COVER, WOODCHIP SEALING	1746-4	CROSSBAR SHAFT CAP, FRONT	0130-2
		CROSSBAR VENT VALVE	0135-2
		(S.N. -007391)	0135-2
		CROSSBAR VENT VALVE	0135-4
		(S.N. 007392-)	0135-4
		CUSHION, SEAT(AIR SUSPENSION)	1821-4
		CUSHION, SEAT, MECHANICAL SUSPENSION	1821-6
		CUTTING EDGE (165") SEMI-U	3201-8
		CUTTING EDGE (170"), U-BLADE	3201-6
		CYLINDER (2) ADDITIONAL FIELD INSTALLED FRONT LIGHTS LIFT	1673-4
		CYLINDER BARREL, ONE TOOTH RIPPER	4201-3A
		CYLINDER BARREL, PITCH (SERIAL NO. -006023)	3240-8
		CYLINDER BLOCK DRAIN PLUGS	0404-4
		CYLINDER BLOCK MAIN BEARING CAPS	0404-4
		CYLINDER BLOCK OIL SPRAY NOZZLE	0404-4
		CYLINDER BLOCK PLUGS, ENGINE	0404-4
		CYLINDER BLOCK, ENGINE	0404-4

ALPHABETICAL INDEX - CONTINUED

	PAGE		PAGE
CYLINDER BLOCK, HYDROSTATIC MOTOR.....	0360-22	DECAL, HYDRAULIC DOZER CONTROL FORWARD, NEUTRAL, REVERSE.....	1322-2
CYLINDER BLOCK, MAIN HYDRAULIC PUMP.....	2160-4	DECAL, HYDRAULIC FLUID.....	1322-2
CYLINDER BLOCK, MAIN HYDRAULIC PUMP.....	2160-6	DECAL, HYDRAULIC JOYSTICK CONTROL.....	1322-2
CYLINDER COMPLETE, LIFT.....	3260-4	DECAL, HYDRAULIC RIPPER CONTROL.....	1322-2
CYLINDER COMPONENTS, BLADE HYDRAULIC PITCH (SERIAL NO. 006024-).....	3240-9A	DECAL, JOYSTICK CONTROL.....	1322-2
CYLINDER COMPONENTS, ONE TOOTH RIPPER.....	4201-3A	DECAL, LEAPING DEERE.....	1322-2
CYLINDER COMPONENTS, THREE TOOTH RIPPER.....	4201-5A	DECAL, LIFT HOOK.....	1322-2
CYLINDER HEAD, ENGINE.....	0409-4	DECAL, PARK BRAKE SWITCH.....	1322-2
CYLINDER HEAD, COMPLETE.....	0409-2	DECAL, PARK LOCK, CAUTION OPERATING.....	1322-2
CYLINDER LINER O-RINGS, ENGINE.....	0403-2	DECAL, PERIODIC MAINTENANCE.....	1322-2
CYLINDER LINER, ENGINE.....	0403-2	DECAL, RADIATOR CAP.....	1322-2
CYLINDER LOWERING BLOCK.....	3201-4	DECAL, REAR DEERE.....	1322-2
CYLINDER MOUNTED WORK LIGHTS.....	1673-4	DECAL, RIPPER CONTROL.....	1322-2
CYLINDER PISTON, ONE TOOTH RIPPER.....	4201-3A	DECAL, ROPS CERTIFICATION.....	1322-2
CYLINDER PISTON, THREE TOOTH RIPPER.....	4201-5A	DECAL, SEAT BELT.....	1322-2
CYLINDER ROD, HYDRAULIC PITCH (ANGLE BLADE).....	3240-21A	DECAL, STEERING.....	1322-2
CYLINDER ROD, HYDRAULIC TILT (ANGLE BLADE).....	3240-23A	DECAL, TRACK ADJUSTER.....	1322-2
CYLINDER ROD, ONE TOOTH RIPPER CYLINDER.....	4201-3A	DECAL, WINDSHIELD WASHER.....	1322-2
CYLINDER ROD, THREE TOOTH RIPPER.....	4201-5A	DECAL, 1050C.....	1322-2
CYLINDER, BLADE LIFT.....	3260-2	DECALS (FRENCH).....	1322-6
CYLINDER, BLADE PITCH (SERIAL NO. -006023).....	3240-8	DECALS (SPANISH).....	1322-4
CYLINDER, CAB TILT.....	1810-4	DECALS AND LABELS.....	1322-2
CYLINDER, HYDRAULIC, PIN PULLER.....	4201-11C	DECELERATOR LABEL.....	1322-2
CYLINDER, ONE TOOTH RIPPER.....	4201-2	DEERE FRONT GRILLE LABEL.....	1322-2
CYLINDER, ONE TOOTH RIPPER.....	4201-3A	DEFLECTOR, UNDERCARRIAGE COAL (WITH COAL HANDLING PACKAGE) GUARD.....	0138-4
CYLINDER, PITCH (SERIAL NO. -006023).....	3240-8	DIESEL ENGINE RPM SENSOR ELECTRICAL CONNECTORS.....	1674-36
CYLINDER, PITCH (SERIAL NO. 006024-).....	3240-9A	DIESEL FUEL ONLY LABEL.....	1322-2
CYLINDER, THREE TOOTH RIPPER.....	4201-4	DIODE, TIME COMBINATION.....	1674-16
CYLINDER, THREE TOOTH RIPPER.....	4201-5A	DIODE, TIME RELAY COMBINATION.....	1674-16
CYLINDER, TILT (SERIAL NO. -006023).....	3240-8	DIPSTICK, ENGINE OIL.....	0407-2
CYLINDER, TILT (SERIAL NO. 006024-).....	3240-9A	DIPSTICK, SPLITTER BOX.....	0841-4
CYLINDER, HYDRAULIC PITCH, LEFT PUSH BEAM (ANGLE BLADE).....	3240-21A	DISCHARGE VALVE, WINCH.....	4060-6
CYLINDER, HYDRAULIC TILT, RIGHT PUSH BEAM (ANGLE BLADE).....	3240-23A	DISPLACEMENT CONTROL, HYDROSTATIC MOTOR.....	0360-24
D			
DAMPER, CRANKSHAFT (SER. NO. -005599).....	0429-2	DISPLACEMENT CONTROL VALVE, HYDROSTATIC PUMP.....	0360-10
DAMPER, CRANKSHAFT (SER. NO. 005600-).....	0429-4	DOME LIGHT CIRCUIT BREAKER.....	1674-16
DECAL (LABEL), HYDRAULIC OIL TEMPERATURE GAUGE (WITH WASTEHANDLER OR WOODCHIP).....	1674-22	DOME LIGHT, CAB (SN. 006199-).....	1674-2
DECAL, ACCUMULATOR.....	1322-2	DOME LIGHT, CAB (SN. 006200-).....	1674-3A
DECAL, BATTERY.....	1322-2	DOOR (PERFORATED) REAR (WITH WASTE HANDLER OR WOODCHIP PACKAGE).....	1746-6
DECAL, BYPASS START.....	1322-2	DOOR AND IGNITION SWITCH KEY, CAB.....	1674-14
DECAL, CAB TIPPING PROCEDURE.....	1322-2	DOOR HANDLE, CAB.....	1810-26
DECAL, CHAIN TENSION CAUTION.....	1322-2	DOOR HOLD OPEN HYDRAULIC OIL COOLER HOUSING.....	2160-18
DECAL, CHANGE FINAL DRIVE SEAL OIL.....	1322-2	DOOR HOLD OPEN HYDRAULIC OIL COOLER HOUSING (WOODCHIP OR WASTE HANDLER).....	2160-19E
DECAL, CIRCUIT BREAKER.....	1322-2	DOOR HOLD OPEN LATCHES.....	1810-28
DECAL, DECELERATOR.....	1322-2	DOOR HOLD OPEN PIN.....	1810-28
DECAL, DEERE FRONT GRILLE.....	1322-2	DOOR LATCH; COUNTERWEIGHT (WASTE HANDLER PACKAGE).....	1749-4
DECAL, DIESEL FUEL ONLY.....	1322-2	DOOR LATCH, BATTERY COMPARTMENT.....	0560-4
DECAL, DOORLOCK.....	1322-2	DOOR LOCK AND IGNITION SWITCH KEY, CAB.....	1810-26
DECAL, EMERGENCY EXIT.....	1322-2	DOOR LOCK COVER, CAB.....	1810-26
DECAL, ENGINE SPEED.....	1322-2	DOOR LOCKS, ENGINE COMPARTMENT, BACK.....	1910-4
DECAL, ENGINE START AND STOP PROCEDURE.....	1322-2	DOOR POST COVERS.....	1810-12
DECAL, FORWARD, NEUTRAL, REVERSE.....	1322-2	DOOR SEALING, ENGINE SIDE (WITH WASTE HANDLER OR WOODCHIP PACKAGE).....	1910-8
DECAL, FUSE BLOCK.....	1322-2	DOOR WINDOW SEALS.....	1810-20
		DOOR; COUNTERWEIGHT (WASTE HANDLER PACKAGE).....	1749-4
		DOOR, BATTERY COMPARTMENT.....	0560-4

ALPHABETICAL INDEX - CONTINUED

	PAGE		PAGE
DOOR, HYDRAULIC OIL COOLER HOUSING (WOODCHIP OR WASTE HANDLER).....	2160-19G	DRIVE TRACK CHAIN SPROCKET AND SEGMENTS, FINAL	0201-2
DOORLOCK LABEL	1322-2	DRIVE, ENGINE, SPLITTER BOX.....	0841-2
DOORS COMPLETE, ENGINE COMPARTMENT FRONT	1910-2	DRIVE, FINAL	0201-2
DOORS COMPONENT PARTS,ENGINE COMPARTMENT FRONT	1910-2	DRIVESHAFT, HYDROSTATIC MOTOR.....	0360-22
DOORS, CAB.....	1810-14	DUO-CONE OIL RESERVOIR SENSOR, FINAL DRIVE	0201-2
DOORS, ENGINE COMPARTMENT, BACK	1910-4	DUO-CONE OIL RESERVOIR SIGHT GAUGE, FINAL DRIVE	0201-2
DOUBLE AND SINGLE FLANGE ROLLER (S.N. - 005801).....	0130-8	DUO-CONE SEAL OIL RESERVOIR, FINAL DRIVE	0201-2
DOUBLE AND SINGLE FLANGE ROLLER (S.N. 005802 -).....	0130-10	E	
DRAIN HOSE ENVIRONMENTAL	2005-2	EDGE (165") SEMI-U CUTTING.....	3201-8
DRAIN HOSE, ALL FLUIDS	2005-2	EDGE (170"), U-BLADE CUTTING.....	3201-6
DRAIN HOSE, BASIC SERVICE TOOLS	2005-2	ELBOWS, AIR INLET MANIFOLD REAR AND TURBOCHARGER SIDE.....	0414-6
DRAIN HOSE, FUEL WATER SEPARATOR (S.N. -005599).....	0420-4	ELECTRICAL AIR CONDITIONING RELAYS.....	1674-21C
DRAIN HOSE, SPLITTER BOX	2005-2	ELECTRICAL CIRCUIT BREAKER (W/SCRAPER PACKAGE).....	1674-21A
DRAIN PLUG AUXILIARY SECTION MANIFOLD	4260-2	ELECTRICAL CIRCUIT BREAKER (AIR CONDITIONING).....	1674-21C
DRAIN PLUG, FUEL TANK.....	0560-2	ELECTRICAL CONNECTOR, PILOT CONTROLLER	1674-38
DRAIN PLUG, HYDRAULIC OIL RESERVOIR.....	2160-12	ELECTRICAL CONNECTOR, PROPORTIONAL SOLENOID	1674-38
DRAIN PLUG, RADIATOR	0510-4	ELECTRICAL CONNECTORS (W/SCRAPER PACKAGE).....	1674-21A
DRAIN PLUGS, CYLINDER BLOCK	0404-4	ELECTRICAL CONNECTORS (AIR CONDITIONING).....	1674-21C
DRAIN VALVE, ENGINE FUEL WATER SEPARATOR (S.N. -005599).....	0420-8	ELECTRICAL CONNECTORS; CAB	1674-30
DRAIN VALVE, ENGINE OIL PAN	0407-2	ELECTRICAL CONNECTORS; DIESEL ENGINE RPM SENSOR, TRAVEL MOTOR, SUPPORT SHAFT	1674-36
DRAIN VALVE, SPLITTER BOX	0841-2	ELECTRICAL CONNECTORS; HEATER, A/C, BUCKET, STARTING SWITCH.....	1674-32
DRAIN VALVE,ENGINE FUEL WATER SEPARATOR (S.N. 005600-).....	0420-10	ELECTRICAL CONNECTORS; INSTRUMENT PANEL, ELECTRONIC BOX, & CENTRAL WIRING	1674-28
DRAWBAR	1512-2	ELECTRICAL CONNECTORS, DIESEL TANK & DIESEL MOTOR.....	1674-38
DRAWBAR ATTACHING PINS, HEAVY DUTY	1512-4	ELECTRICAL CONNECTORS, INSTRUMENT PANEL.....	1816-2
DRAWBAR PIN	1512-2	ELECTRICAL CONNECTORS, TRAVEL CONTROLLER POTENTIOMETER, AND PEDAL	1674-34
DRAWBAR PIN RETAINER.....	1512-2	ELECTRICAL HARNESS, APRON SOLENOID (SCRAPER PULLER).....	1674-24
DRAWBAR PIN, HEAVY DUTY	1512-4	ELECTRICAL OUTLET CIRCUIT BREAKER.....	1674-16
DRAWBAR PINS	1512-6	ELECTRICAL OUTLET 24 VOLT LABEL.....	1674-16
DRAWBAR STEP	1512-6	ELECTRICAL PLUG (AIR CONDITIONING)	1674-21C
DRAWBAR, ATTACHING	1512-4	ELECTRICAL RELAY SOCKET (AIR CONDITIONING).....	1674-21C
DRAWBAR, EXTENDED	1512-4	ELECTRICAL RELAY SOCKET (W/SCRAPER PACKAGE).....	1674-21A
DRAWBAR, HEAVY DUTY	1512-4	ELECTRICAL RELAYS (W/SCRAPER PACKAGE).....	1674-21A
DRAWBAR, SCRAPER PULLER	1512-6	ELECTRICAL REPAIR KIT	0201-2
DRIVE BELT PULLEY (SERIAL NO. -005361).....	1830-2	ELECTRICAL WIRING HARNESS (AIR CONDITIONING).....	1674-21C
DRIVE BELT PULLEY (SERIAL NO. 005362-).....	1830-4	ELECTRICAL WIRING HARNESS, CIRCUIT BREAKER, AND RELAYS(W/SCRAPER PACKAGE)....	1674-21A
DRIVE BELT, ALTERNATOR.....	0423-6	ELECTRICAL WIRNG HARNESS (W/SCAPER PACKAGE)	1674-21A
DRIVE BELT, ALTERNATOR (S.N. -005599).....	0423-2	ELECTRONIC BOX WIRING HARNESS CONNECTORS	1674-28
DRIVE BELT, ALTERNATOR (S.N. 005600-).....	0423-4	ELEMENT (DOZER), HYDROSTATIC FILTER	0360-30
DRIVE BELT, ALTERNATOR(SCRAPER PULLER).....	0423-6	ELEMENT (SCRAPER), HYDROSTATIC FILTER.....	0360-31A
DRIVE BELT,AIR CONDITIONER COMPRESSOR (SERIAL NO. -005361).....	1830-2	ELEMENT FOR DUST EJECTION SYSTEM ON WASTE HANDLER, CAB FRESH AIR	1810-18
DRIVE BELT,AIR CONDITIONER COMPRESSOR (SERIAL NO. 005362-).....	1830-4	ELEMENT, CAB FRESH AIR FILTER	1810-18
DRIVE COUPLING, MAIN HYDRAULIC PUMP	2160-2		
DRIVE GEAR,FUEL INJECTION PUMP (SERIAL NO. -005599).....	0413-5A		
DRIVE GEARS, FINAL	0201-4		
DRIVE HOUSING, FINAL	0201-4		
DRIVE LUBRICATION HOSES, FINAL.....	0201-2		
DRIVE MOTOR,RADIATOR FAN	0510-8		
DRIVE SHAFT BEARING, MAIN HYDRAULIC PUMP	2160-4		
DRIVE SHAFT, FINAL DRIVE	0201-4		
DRIVE SHAFT, MAIN HYDRAULIC PUMP.....	2160-4		
DRIVE SPLITTER BOX PARTS, ENGINE	0841-4		
DRIVE SPROCKET RECESSED, FINAL.....	0201-2		

ALPHABETICAL INDEX - CONTINUED

	PAGE		PAGE
ELEMENT, ENGINE FUEL FILTER (SN. 005600-)	0420-12	ENGINE CYLINDER HEAD EXHAUST VALVE	0409-4
ELEMENT, ENGINE FUEL WATER SEPARATOR (S.N. -005599)	0420-8	ENGINE CYLINDER HEAD GASKET	0409-4
ELEMENT, FUEL FILTER (S.N. -005599)	0420-2	ENGINE CYLINDER HEAD GASKETS	0409-6
ELEMENT, HYDRAULIC OIL RETURN	2160-12	ENGINE CYLINDER HEAD INTAKE VALVE	0409-4
ELEMENT, HYDROSTATIC PUMP CASE DRAIN FILTER	2160-16	ENGINE CYLINDER HEAD VALVE SPRINGS	0409-4
ELEMENT, RADIATOR COOLANT FILTER	0510-16	ENGINE CYLINDER LINER	0403-2
ELEMENT, ENGINE OIL FILTER	0407-10	ENGINE CYLINDER LINER KIT	0403-2
ELEMENTS (PRIMARY/SECONDARY) ENGINE AIR CLEANER FILTER	0520-2	ENGINE CYLINDER LINER O-RINGS	0403-2
ELEMENTS, HYDRAULIC OIL CASE DRAIN FILTERS	2160-16	ENGINE DRIVE SPLITTER BOX	0841-2
ELEMENTS, HYDROSTATIC CASE DRAIN FILTER	0360-42	ENGINE DRIVE SPLITTER BOX PARTS	0841-4
EMERGENCY EXIT LABEL	1322-2	ENGINE FLYWHEEL	0433-2
EMERGENCY STOP SWITCH	1674-14	ENGINE FLYWHEEL HOUSING	0433-6
END BIT (170") U-BLADE	3201-6	ENGINE FLYWHEEL HOUSING ACCESS COVER	0433-6
END BIT, SEMI-U (165")	3201-8	ENGINE FLYWHEEL HOUSING BREATHER	0433-4
ENGINE ACCELERATOR LEVER	0515-4	ENGINE FLYWHEEL HOUSING COVER	0433-4
ENGINE AIR CLEANER FILTER AND ELEMENTS PRIMARY/SECONDARY	0520-2	ENGINE FLYWHEEL HOUSING GASKET	0433-6
ENGINE AIR CLEANER FILTER ELEMENTS (PRIMARY/SECONDARY)	0520-2	ENGINE FLYWHEEL RING GEAR	0433-2
ENGINE AIR CLEANER FILTER MOUNTING BRACKET	0520-2	ENGINE FRONT COVER	0402-8
ENGINE AIR CLEANER FILTER RESTRICTION INDICATOR	0520-4	ENGINE FRONT COVER ACCESS COVER (SER. NO. -005599)	0402-10
ENGINE AIR CLEANER HOSES	0520-4	ENGINE FRONT COVER GASKET	0402-8
ENGINE AIR CLEANER MANIFOLD	0520-4	ENGINE FUEL FILTER (S.N. -005599)	0420-2
ENGINE AIR CLEANER PIPE	0520-4	ENGINE FUEL FILTER ELEMENT (S.N.005600-)	0420-12
ENGINE AIR INTAKE HOSES	0520-6	ENGINE FUEL FILTER HEAD PLUGS (SN. 005600-)	0420-12
ENGINE AIR INTAKE PIPES	0520-6	ENGINE FUEL FILTER HEADER (SN. 005600-)	0420-12
ENGINE AIR INTAKE PRECLEANER	0520-8	ENGINE FUEL FILTER HOSES (S.N. -005599)	0420-2
ENGINE CENTAFLEX COUPLING	0752-2	ENGINE FUEL FILTER MOUNTING (SN. 005600-)	0420-13A
ENGINE COLD WEATHER STARTING AID SOLENOID	0420-20	ENGINE FUEL FILTER MOUNTING BRACKET (SN. 005600-)	0420-13A
ENGINE COLD WEATHER STARTING AID GLOW PLUG	0420-20	ENGINE FUEL FILTER MOUNTING BRACKET AND HARDWARE (SN. 005600-)	0420-13A
ENGINE COMPARTMENT BACK DOOR KEY	1910-4	ENGINE FUEL LINES, FILTER TO PUMP (SCRAPER PULLER PACKAGE)	0420-16
ENGINE COMPARTMENT BACK DOOR LATCH	1910-4	ENGINE FUEL PRE HEAT FUEL LINES	0420-18
ENGINE COMPARTMENT BACK DOOR LOCKS	1910-4	ENGINE FUEL WATER SEPARATOR (S.N. -005599)	0420-8
ENGINE COMPARTMENT BACK DOORS	1910-4	ENGINE FUEL WATER SEPARATOR (S.N.005600-)	0420-10
ENGINE COMPARTMENT BACK DOORS, HOOD AND HOOD SUPPORT	1910-4	ENGINE FUEL WATER SEPARATOR BOWL (S.N. -005599)	0420-8
ENGINE COMPARTMENT BACK HOOD	1910-4	ENGINE FUEL WATER SEPARATOR BRACKET (S.N. -005599)	0420-4
ENGINE COMPARTMENT COVERS	1910-2	ENGINE FUEL WATER SEPARATOR BRACKET (S.N.005600-)	0420-6
ENGINE COMPARTMENT FRONT DOORS COMPLETE	1910-2	ENGINE FUEL WATER SEPARATOR DRAIN VALVE (S.N. -005599)	0420-8
ENGINE COMPARTMENT FRONT DOORS COMPONENT PARTS	1910-2	ENGINE FUEL WATER SEPARATOR DRAIN VALVE (S.N. 005600-)	0420-10
ENGINE COMPARTMENT SEALING TRIM	1910-4	ENGINE FUEL WATER SEPARATOR FILTER ELEMENT (S.N. 005600-)	0420-10
ENGINE COMPARTMENT SIDE SHIELD HINGE	1910-2	ENGINE FUEL WATER SEPARATOR GASKET (S.N. 005600-)	0420-10
ENGINE COMPARTMENT SIDE SHIELDS	1910-2	ENGINE FUEL WATER SEPARATOR GASKETS (S.N. -005599)	0420-8
ENGINE COMPARTMENT SIDE SHIELDS (PERFORATED) (W/ WASTEHANDLER)	1910-2	ENGINE FUEL WATER SEPARATOR HOSE (S.N.005600-)	0420-6
ENGINE COOLANT HEATER	0505-2	ENGINE FUEL WATER SEPARATOR HOSES (S.N. -005599)	0420-4
ENGINE COOLANT HEATER POWER CORD	0505-2	ENGINE FUEL WATER SEPARATOR HOUSING COVER (S.N.-005599)	0420-8
ENGINE COOLANT HEATING ELEMENT	0505-2	ENGINE FUEL WATER SEPARATOR SEDIMENT BOWL (S.N.005600-)	0420-10
ENGINE COOLANT TEMPERATURE GAUGE	1674-14		
ENGINE COVER LATCH	1910-2		
ENGINE CRANKCASE BREATHER	0407-4		
ENGINE CRANKCASE BREATHER TUBE	0407-4		
ENGINE CYLINDER BLOCK	0404-4		
ENGINE CYLINDER BLOCK PLUGS	0404-4		
ENGINE CYLINDER BLOCK SEALING RINGS	0404-4		
ENGINE CYLINDER HEAD	0409-4		

ALPHABETICAL INDEX - CONTINUED

	PAGE		PAGE
ENGINE FUEL WATER SEPARATOR SHUT-OFF VALVE (S.N. -005599).....	0420-4	ENGINE SPEED CONTROL LEVER.....	0515-4
ENGINE FUEL WATER SEPARATOR(S.N.005600-).....	0420-6	ENGINE SPEED CONTROL LEVER BOOT.....	0515-4
ENGINE GASKETS.....	0409-6	ENGINE SPEED CONTROL POTENTIOMETER.....	0515-2
ENGINE LIFT BRACKET.....	0404-2	ENGINE SPEED CONTROL RODS.....	0515-2
ENGINE LINES, FUEL, FILTER TO PUMP (SCRAPER PULLER PACKAGE).....	0420-16	ENGINE SPEED LABEL.....	1322-2
ENGINE MOUNTING BRACKETS.....	0540-2	ENGINE SPEED SENSOR.....	1674-18
ENGINE MOUNTING BRACKETS ISOLATORS.....	0540-2	ENGINE START AND STOP PROCEDURE LABEL.....	1322-2
ENGINE OIL COOLER (SER. NO. -005599).....	0419-4	ENGINE THERMOSTAT.....	0418-2
ENGINE OIL COOLER (SER. NO. 005600-).....	0419-6	ENGINE THERMOSTAT GASKET.....	0418-2
ENGINE OIL COOLER BRACKET (SER. NO. -005599).....	0419-4	ENGINE THERMOSTAT HOUSING.....	0418-2
ENGINE OIL COOLER FITTINGS (S/N -005735).....	0419-8	ENGINE; DIESEL RPM SENSOR ELECTRICAL CONNECTORS.....	1674-36
ENGINE OIL COOLER FITTINGS (S/N 005777-).....	0419-10	ENGINE, COMPLETE.....	0404-2
ENGINE OIL COOLER GASKET (SER. NO. -005599).....	0419-4	ENVIRONMENTAL, DRAIN HOSE.....	2005-2
ENGINE OIL COOLER GASKET (SER. NO. 005600-).....	0419-6	EVAPORATOR, HEAT EXCHANGERS/BLOWERS (HEATER/AIR CONDITIONER) (SN -8100).....	1830-10
ENGINE OIL COOLER HOUSING (SER. NO. -005599).....	0419-4	EVAPORATOR, HEAT EXCHANGERS/BLOWERS (HEATER/AIR CONDITIONER) (SN 8101-).....	1830-12
ENGINE OIL COOLER HOUSING (SER.NO.005600-).....	0419-6	EXHAUST MANIFOLD.....	0410-2
ENGINE OIL COOLER LINES (SER. NO. -005599).....	0419-2	EXHAUST MANIFOLD GASKET.....	0409-6
ENGINE OIL DIPSTICK.....	0407-2	EXHAUST MANIFOLD GASKETS.....	0410-2
ENGINE OIL DIPSTICK TUBE.....	0407-2	EXHAUST MANIFOLD, TURBOCHARGER.....	0416-2
ENGINE OIL FILLER.....	0409-8	EXHAUST PIPE GASKET, MUFFLER.....	0530-2
ENGINE OIL FILLER CAP.....	0409-8	EXHAUST PIPE HEAT SHIELD.....	0530-2
ENGINE OIL FILLER TUBE.....	0409-8	EXHAUST PIPE, MUFFLER.....	0530-2
ENGINE OIL FILLER TUBE CAP.....	0409-8	EXHAUST VALVE ENGINE CYLINDER HEAD.....	0409-4
ENGINE OIL FILTER ADAPTER.....	0407-10	EXHAUST VALVE, ENGINE CYLINDER HEAD.....	0409-4
ENGINE OIL FILTER ELEMENT.....	0407-10	EXPANSION VALVE, AIR CONDITIONING (SERIAL NO. -008100).....	1830-10
ENGINE OIL FILTERS.....	0407-10	EXPANSION VALVE, AIR CONDITIONING (SERIAL NO. 008101-).....	1830-12
ENGINE OIL PAN.....	0407-2	EXTENDED DRAWBAR.....	1512-4
ENGINE OIL PAN DRAIN VALVE.....	0407-2	EXTENDED HITCH.....	1512-4
ENGINE OIL PAN GASKET.....	0407-2	EXTENSION, GREASE GUN HOSE.....	2005-2
ENGINE OIL PAN REPAIR KIT.....	0407-2	EXTENSION, SEAT BACKREST.....	1821-2
ENGINE OIL PRESSURE GAUGE.....	1674-14	EYEBOLT, BASIC SERVICE TOOLS.....	2005-2
ENGINE OIL PRESSURE REGULATING VALVE.....	0402-8	EYEBOLT, CAB REMOVAL.....	2005-2
ENGINE OIL PUMP.....	0407-8		
ENGINE OIL PUMP (ESN -99120615).....	0407-6	F	
ENGINE OIL PUMP (ESN 99120616-).....	0407-6	FACE SEAL, TRACK FLANGE ROLLER (S.N. - 005801).....	0130-8
ENGINE OIL PUMP GEAR.....	0407-6	FACE SEAL, TRACK FLANGE ROLLER (S.N. 005802 -).....	0130-10
ENGINE OIL PUMP PICKUP TUBE.....	0407-8	FAN CONVERSION KIT, REVERSIBLE, MANUAL TO AUTOMATIC.....	0510-12
ENGINE OIL PUMP PICKUP TUBE GASKET.....	0407-8	FAN DRIVE CONTROLLER, HYDRAULIC.....	1674-8
ENGINE OVERHAUL COMPLETE SEAL KIT.....	0452-2	FAN DRIVE CONTROLLER, HYDRAULIC.....	1674-10
ENGINE PISTON.....	0403-2	FAN DRIVE CONTROLLER, HYDRAULIC, WIRING HARNESS.....	1674-8
ENGINE PISTON COOLING FITTING.....	0403-2	FAN DRIVE CONTROLLER, HYDRAULIC, WIRING HARNESS.....	1674-10
ENGINE PISTON COOLING FITTING ORIFICE.....	0403-2	FAN DRIVE HYDRAULIC PUMP (COMPLETE).....	2160-11A
ENGINE PISTON RINGS.....	0403-2	FAN DRIVE HYDRAULIC PUMP ADAPTER PLATE.....	2160-10
ENGINE PISTON WRIST PIN.....	0403-2	FAN DRIVE HYDRAULIC PUMP COMPONENTS.....	2160-11C
ENGINE PRE HEAT FUEL LINE BRACKET.....	0420-18	FAN DRIVE HYDRAULIC PUMP MOUNTING.....	2160-10
ENGINE RPM SENSOR.....	1674-18	FAN DRIVE HYDRAULIC PUMP PRESSURE COMPENSATOR VALVE.....	2160-11A
ENGINE SEAL KIT.....	0452-2	FAN DRIVE MOTOR, HYDRAULIC OIL COOLER.....	2160-19I
ENGINE SHUT OFF CIRCUIT BREAKER (-5615).....	1674-16	FAN DRIVE PUMP.....	2160-11A
ENGINE SHUTOFF/POWER SUPPLY RELAY.....	1674-16	FAN DRIVE PUMP COMPONENTS.....	2160-11C
ENGINE SIDE DOOR SEALING (WITH WASTE HANDLER OR WOODCHIP PACKAGE).....	1910-8	FAN MOTOR(REVERSIBLE)VALVE, RADIATOR.....	0510-12
ENGINE SPEED CONTROL.....	1810-6	FAN RELAY, RADIATOR REVERSING (W/WASTE HANDLER).....	1674-20
ENGINE SPEED CONTROL BALL JOINT.....	0515-2	FAN, AIR CONDITIONER VAPOR CONDENSER.....	1833-6
ENGINE SPEED CONTROL LEVER.....	0515-2	FAN, ALTERNATOR (SN 005600-).....	1672-4

000I-18

1050C CRAWLER DOZER

ALPHABETICAL INDEX - CONTINUED

	PAGE		PAGE
FAN, HYDRAULIC OIL COOLER.....	2160-19I	FINAL DRIVE COMPONENT PARTS	0201-8
FAN, HYDRAULIC OIL COOLER REVERSING	2160-19I	FINAL DRIVE COVER PLUGS	0201-6
FAN,RADIATOR	0510-8	FINAL DRIVE DUO-CONE OIL RESERVOIR	
FAST FUELING FUEL TANK	0560-8	SENSOR	0201-2
FAST FUELING FUEL TANK ADAPTER	0560-8	FINAL DRIVE DUO-CONE OIL RESERVOIR SIGHT	
FAST FUELING TANK VENT FITTING.....	0560-8	GAUGE.....	0201-2
FASTENERS, CAB COMPLETE TO PLATFORM.....	1810-30	FINAL DRIVE GEARS	0201-4
FIELD INSTALLATION KIT, ONE TOOTH		FINAL DRIVE GEARS	0201-6
RIPPER.....	4201-2	FINAL DRIVE GEARS	0201-8
FIELD INSTALLATION KIT, ONE TOOTH		FINAL DRIVE GEARS, SHAFTS AND	
RIPPER.....	4201-8	PINION	0201-6
FIELD INSTALLATION KIT, PIN PULLER FOR		FINAL DRIVE GUARD (WITH WASTE HANDLER	
RIPPER TOOTH.....	4201-10	PACKAGE).....	0201-12
FIELD INSTALLATION KIT, PIN PULLER FOR		FINAL DRIVE GUARD RING (WASTE HANDLER).....	0201-12
RIPPER TOOTH.....	4201-11A	FINAL DRIVE GUARD RING WITH WASTE	
FIELD INSTALLATION KIT, THREE TOOTH		HANDLER PACKAGE.....	0201-12
RIPPER.....	4201-4	FINAL DRIVE HOUSING	0201-4
FIELD INSTALLATION KIT, THREE TOOTH		FINAL DRIVE HOUSING BRAKE COMPLETE	0201-10
RIPPER.....	4201-5A	FINAL DRIVE HOUSING BRAKE COMPONENT	
FIELD INSTALLATION KIT, THREE TOOTH		PARTS	0201-10
RIPPER.....	4201-6	FINAL DRIVE HOUSING MAGNETIC PLUG.....	0201-4
FIELD KIT, ADDITIONAL LIGHTS FOR FRONT		FINAL DRIVE LUBRICATION HOSES.....	0201-2
AND REAR OF CAB	1673-2	FINAL DRIVE LUBRICATION LINES	0201-2
FIELD KIT, GRILLE MOUNTED LIGHTS.....	1673-6	FINAL DRIVE MAGNET.....	0201-6
FILLER NECK, RADIATOR.....	0510-6	FINAL DRIVE OIL HOSES.....	0201-2
FILTER (DOZER), HYDROSTATIC	0360-30	FINAL DRIVE OIL LEVEL SENSOR.....	0201-2
FILTER (SCRAPER), HYDROSTATIC	0360-31A	FINAL DRIVE OUTPUT FLANGE.....	0201-4
FILTER ELEMENT FOR DUST EJECTION SYSTEM		FINAL DRIVE PARK BRAKE ASSEMBLY.....	0201-8
ON WASTE HANDLER, CAB FRESH AIR.....	1810-18	FINAL DRIVE PARK BRAKE COMPLETE	0201-8
FILTER ELEMENT, CAB FRESH AIR.....	1810-18	FINAL DRIVE PINION.....	0201-6
FILTER ELEMENT,ENGINE FUEL WATER		FINAL DRIVE PLANET CARRIER HOUSING	0201-6
(S.N. 005600-).....	0420-10	FINAL DRIVE PLANET PINION.....	0201-4
FILTER ELEMENT,FUEL WATER SEPARATOR		FINAL DRIVE PLANET PINION.....	0201-6
(S.N.-005599).....	0420-8	FINAL DRIVE PLANET PINION CARRIER	0201-4
FILTER ELEMENTS PRIMARY/SECONDARY,		FINAL DRIVE PROTECTION RING (WASTE	
ENGINE AIR CLEANER.....	0520-2	HANDLER PACKAGE)	0201-12
FILTER RESTRICTION SWITCH, HYDRAULIC OIL	1671-2	FINAL DRIVE RING GEAR.....	0201-4
FILTER, CAB PLATFORM AIR RECIRCULATION		FINAL DRIVE RING GEAR.....	0201-6
(SERIAL NO. -007908).....	1810-10	FINAL DRIVE SEALING RING(WASTE HANDLER).....	0201-12
FILTER, CAB PLATFORM AIR RECIRCULATION		FINAL DRIVE SEALS	0201-4
(SERIAL NO. 007909-).....	1810-11A	FINAL DRIVE SEALS	0201-8
FILTER, ENGINE FUEL (S.N. -005599).....	0420-2	FINAL DRIVE SHAFTS.....	0201-4
FILTER, FUEL (S.N. -005599)	0420-2	FINAL DRIVE SPEED SENSOR.....	0201-2
FILTER, HYDRAULIC OIL RETURN.....	2160-12	FINAL DRIVE SPROCKET RECESSED.....	0201-2
FILTER, HYDROSTATIC MOTOR CASE DRAIN	0360-42	FINAL DRIVE SUN GEAR	0201-4
FILTER, RADIATOR COOLANT.....	0510-16	FINAL DRIVE SUN PINION SHAFTS.....	0201-6
FILTER, WINCH HYDRAULIC	4060-8	FINAL DRIVE TRACK CHAIN SPROCKET	
FILTERS, ENGINE OIL	0407-10	AND SEGMENTS.....	0201-2
FILTERS, FUEL (SN. 005600-).....	0420-12	FITTING, ENGINE PISTON COOLING.....	0403-2
FILTERS, HYDRAULIC OIL CASE DRAIN	2160-16	FITTING, FAST FUELING TANK VENT.....	0560-8
FILTERS, HYDRAULIC OIL PUMP CASE DRAIN	2160-16	FITTING, GREASE THREE TOOTH RIPPER	
FILTERS, HYDROSTATIC PUMP CASE DRAIN	2160-16	CYLINDER	4201-5A
FINAL DRIVE	0201-2	FITTING, TRACK CHAIN ADJUSTER/TENSIONER	
FINAL DRIVE BEARINGS	0201-4	GREASE	0130-4
FINAL DRIVE BEARINGS	0201-8	FITTINGS, CAB WINDOW WASHER	1810-18
FINAL DRIVE BRAKE ASSEMBLY.....	0201-10	FITTINGS, ENGINE OIL FILTER TO	
FINAL DRIVE BRAKE ASSEMBLY SEALS	0201-10	OIL COOLER(S.N. -005735).....	0419-8
FINAL DRIVE BRAKE ASSEMBLY SNAP RING.....	0201-10	FITTINGS, ENGINE OIL FILTER TO	
FINAL DRIVE BRAKE COMPRESSION SPRINGS	0201-10	OIL COOLER(S/N 005777-)	0419-10
FINAL DRIVE BRAKE COVER	0201-8	FITTINGS, FUEL FILTER (SN. 005600-).....	0420-12
FINAL DRIVE BRAKE DISKS	0201-10	FITTINGS, FUEL WATER SEPARATOR	
FINAL DRIVE BRAKE HOUSING.....	0201-10	(S.N. -005599)	0420-4
FINAL DRIVE BRAKE PISTON	0201-10	FITTINGS, HYDRAULIC OIL RESERVOIR CASE	
FINAL DRIVE BRAKE PLATES	0201-10	DRAIN FILTERS	2160-16
FINAL DRIVE BRAKE PLUG.....	0201-8	FITTINGS, HYDROSTATIC MOTOR TEST PORT	0360-40
FINAL DRIVE COMPLETE.....	0201-2	FITTINGS, HYDROSTATIC SYSTEM	0360-42
FINAL DRIVE COMPONENT PARTS	0201-6	FITTINGS, HYDROSTATIC TEST PORT	0360-40