



Illustrated Parts Manual

Models 3394RT & 4394RT

Prior to
SN 0200191606

**P/N
3121134**

February 7, 2014

ANSI



An Oshkosh Corporation Company

REVISION LOG

NOTE: For Machines with SN 0200186972, 0200187002 & 0200187013 refer to Illustrated Parts Manual p/n 3121250. These Machines are built to B/M 0010583 Revision 56 or higher specs.

June 1, 2002 - Original Issue Of Manual (Manual edited to B/M 0010583 Revision 4)

November 1, 2002 - Revised Manual (Manual edited to B/M 0010583 Revision 8)

March 6, 2003 - Revised Manual (Manual edited to B/M 0010583 Revision 10)

October 6, 2003 - Revised Manual (Manual edited to B/M 0010583 Revision 19)

May 14, 2004 - Revised Manual (Manual edited to B/M 0010583 Revision 27)

September 1, 2004 - Revised Manual (Manual edited to B/M 0010583 Revision 29)

January 24, 2005 - Revised Manual (Manual edited to B/M 0010583 Revision 32)

December 13, 2005 - Revised Manual (Manual edited to B/M 0010583 Revision 43)

April 27, 2006 - Revised Manual (Manual edited to B/M 0010583 Revision 45)

November 14, 2006 - Revised Manual (Manual edited to B/M 0010583 Revision 47)

April 15, 2007 - Revised Manual (Manual edited to B/M 0010583 Revision 51)

August 1, 2007 - Revised Manual (Manual edited to B/M 0010583 Revision 51)

November 30, 2007 - Revised Manual (Manual edited to B/M 0010583 Revision 52)

January 31, 2008 - Revised Manual (Manual edited to B/M 0010583 Revision 55)

October 15, 2008 - Revised Manual (Manual edited to B/M 0010583 Revision 55)

January 1, 2009 - Revised Manual

June 1, 2009 - Revised Manual

October 1, 2010 - Revised Manual

June 16, 2011 - Revised Manual

September 22, 2011 - Revised Manual

February 14, 2012 - Revised Manual

June 27, 2012 - Revised Manual

September 7, 2012 - Revised Manual

January 21, 2013 - Revised Manual

April 30, 2013 - Revised Manual

July 22, 2013 - Revised Manual

October 14, 2013 - Revised Manual

February 7, 2014 - Revised Manual

REVISION LOG

TABLE OF CONTENTS

FIGURE NO.	TITLE	PAGE NO.
SECTION 1 - FRAME		1-1
1-1	AXLE AND STEERING INSTALLATION - 2WD	1-2
1-2	AXLE AND STEERING INSTALLATION - 4WD	1-6
1-3	TIRE AND WHEEL DRIVE INSTALLATIONS	1-10
1-4	DRIVE MOTOR/HUB ASSEMBLY	1-14
1-5	BEACON LIGHT AND 4WD VALVE INSTALLATIONS (FRAME MOUNTED)	1-18
1-6	LEVELING JACKS INSTALLATION	1-20
SECTION 2 - GROUND CONTROLS		2-1
2-1	CONTROL VALVES INSTALLATION	2-2
2-2	MAIN CONTROL VALVE ASSEMBLY	2-6
2-3	ENGINE INSTALLATION (DEUTZ)	2-8
2-4	GENERATOR INSTALLATION (DEUTZ ENGINE OPTIONS)	2-16
2-5	ENGINE INSTALLATION (FORD)	2-20
2-6	GENERATOR INSTALLATION (FORD ENGINE OPTIONS)	2-30
2-7	ENGINE INSTALLATION (GM)	2-34
2-8	GENERATOR INSTALLATION (GM ENGINE OPTIONS)	2-40
2-9	DRIVE PUMP SUB-ASSEMBLY	2-44
2-10	2WD PISTON PUMP ASSEMBLY (SINGLE)	2-46
2-11	4WD PISTON PUMP ASSEMBLY (TANDEM)	2-50
2-12	GEAR PUMP ASSEMBLY	2-56
2-13	AUXILIARY PUMP ASSEMBLY	2-58
2-14	TANKS, ALARM AND HORN INSTALLATIONS	2-62
2-15	GROUND CONTROL BOX INSTALLATION	2-66
2-16	HOODS AND LADDERS INSTALLATIONS (PRIOR TO SN 0200116736)	2-70
2-17	HOODS AND LADDERS INSTALLATIONS (SN 0200116736 TO SN 0200191606)	2-76
SECTION 3 - SCISSORS ARMS		3-1
3-1	SCISSORS ARMS INSTALLATION (3394RT)	3-2
3-2	SCISSORS ARMS INSTALLATION (4394RT)	3-8
SECTION 4 - PLATFORM		4-1
4-1	PLATFORM ATTACH AND MODULE INSTALLATIONS	4-2
4-2	MANUAL SINGLE DECK EXTENSION AND PLATFORM ASSEMBLY	4-4
4-3	MANUAL DUAL DECK EXTENSION AND PLATFORM ASSEMBLY	4-8
4-4	POWER DECK EXTENSION AND PLATFORM ASSEMBLY	4-12
4-5	RAILS INSTALLATION	4-18
4-6	PLATFORM CONSOLE BOX ASSEMBLY	4-22
4-7	DRIVE/STEER CONTROLLER ASSEMBLY (PRIOR TO SN 0200141441)	4-26
4-8	DRIVE/STEER CONTROLLER ASSEMBLY (SN 0200141441 TO SN 0200191606)	4-28
SECTION 5 - CYLINDER		5-1
5-1	AXLE LOCKOUT CYLINDER ASSEMBLY	5-2
5-2	LEVEL JACK CYLINDER ASSEMBLY	5-4
5-3	LIFT CYLINDER ASSEMBLY	5-6
5-4	PLATFORM EXTENSION CYLINDER ASSEMBLY	5-10
5-5	STEER CYLINDER ASSEMBLY (PRIOR TO SN 0200137518)	5-12
5-6	STEER CYLINDER ASSEMBLY (SN 0200137518 TO SN 0200191606)	5-14

TABLE OF CONTENTS

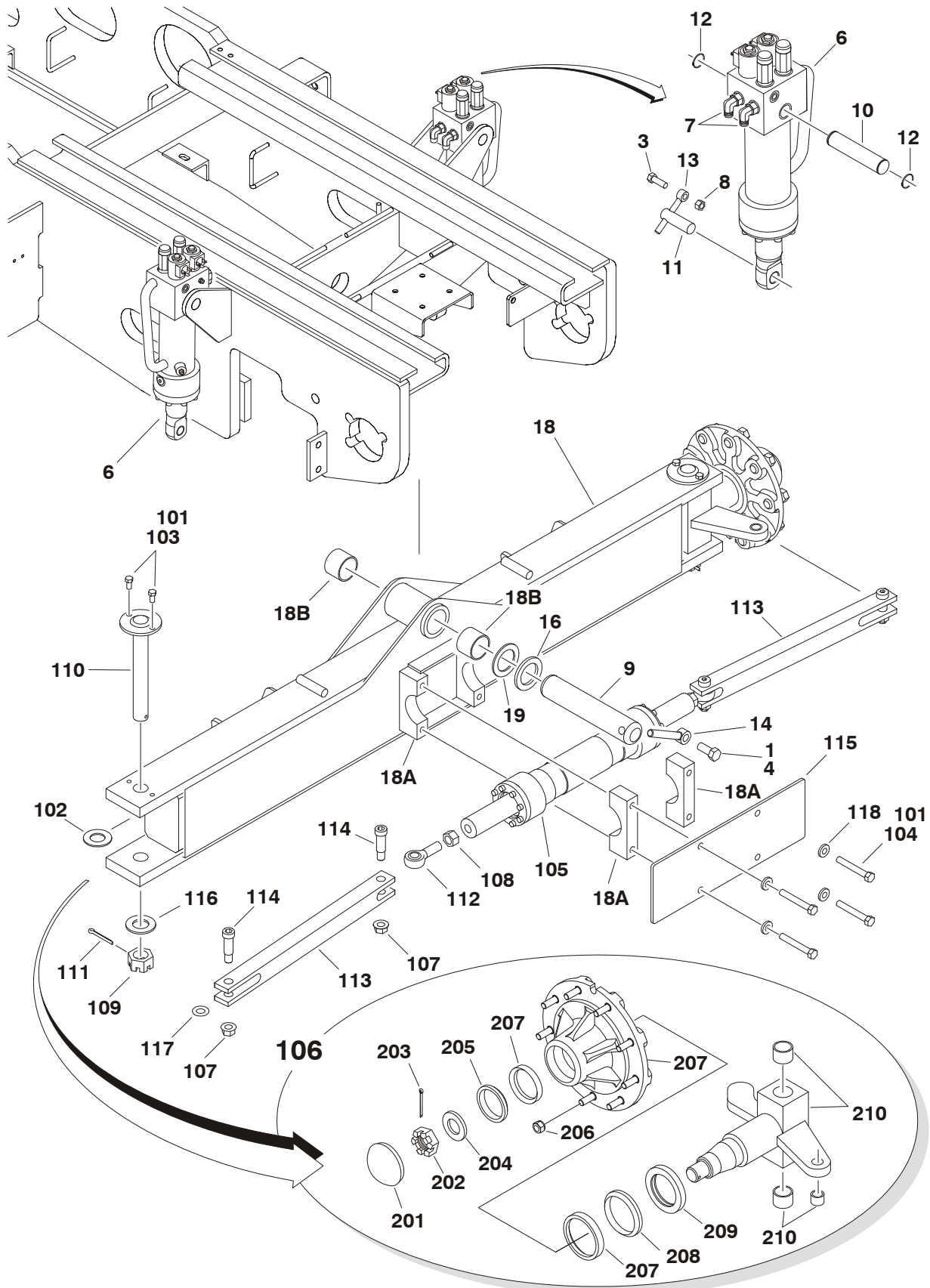
FIGURE NO.	TITLE	PAGE NO.
SECTION 6 - HYDRAULIC		6-1
6-1	STANDARD HYDRAULIC DIAGRAM (2WD)	6-2
6-2	STANDARD HYDRAULIC DIAGRAM (4WD)	6-4
6-3	LEVELING JACK HYDRAULIC DIAGRAM	6-8
6-4	HYDRAULIC DIAGRAM LIST	6-10
SECTION 7 - ELECTRICAL		7-1
7-1	ELECTRICAL COMPONENTS INSTALLATION	7-2
SECTION 8 - DECALS		8-1
8-1	DECAL INSTALLATION (ANSI SPEC)	8-2
8-2	DECAL INSTALLATION (COUNTRY SPEC)	8-6
SECTION 9 - RECOMMENDED SERVICE PARTS STOCK		9-1
SECTION 10 - SPECIAL OPTIONS		10-1
SECTION 11 - PART NUMBER INDEX		11-1

SECTION 1

FRAME

SECTION 1 FRAME

FIGURE 1-1. AXLE AND STEERING INSTALLATION - 2WD



SECTION 1 FRAME

FIGURE 1-1. AXLE AND STEERING INSTALLATION - 2WD

ITEM #	PART NUMBER	QTY.	DESCRIPTION	REV.
	0271691	Ref	OSCILLATING AXLE INSTALLATION	D
1	0100011	AR	Locking, Compound	
2	Not Used			
3	0641609	2	Bolt 3/8-16NC x 1-1/8	
4	0642012	1	Bolt 5/8-11NC x 1-1/2	
5	Not Used			
6	1684145	2	Oscillating Axle Cylinder Assembly (See CYLINDER SECTION for Breakdown)	
7	2130406	4	Fitting, 90	
8	3311605	2	Locknut 3/8-16NC	
9	3422592	1	Pin, Axle Pivot	
10	3422745	2	Pin, Cylinder (Top)	
11	3422899	2	Pin, Cylinder (Bottom)	
12	3760115	4	Ring, Retaining	
13	3841143	2	Keeper, Pin	
14	3841258	1	Keeper, Pin	
15	Not Used			
16	4740158	1	Washer, Thrust	
17	Not Used			
18	0272212	1	Axle Weldment	
18A	0561300	4	Block, Cylinder	
18B	0961950	2	Bushing	
19	4740541	2	Washer, Thrust	
	0271620	Ref	STEERING INSTALLATION - 2WD FRONT	E
101	0100011	AR	Locking, Compound	
102	0440162	2	Bearing, Thrust	
103	0641606	4	Bolt 3/8-16NC x 3/4	
104		4	Bolt Options: 1/2-13NC x 3-1/2 (Grade 8) (Prior to SN 0200113943) 1/2-13NC x 3 (SN 0200113943 to SN 0200191606)	
105	0681828 0641824	1	Steer Cylinder Assembly Options (See CYLINDER SECTION for Breakdown): Prior to SN 0200137518 (was p/n 1683614) SN 0200137518 to SN 0200191606	
	Use 1684412 1684412			
106	2780230	2	Hub/Spindle Assembly (See Items 201 to 210 for Breakdown)	
107	3312008	4	Nut 5/8-11NC	
108	3322201	2	Nut 3/4-16NC	
109	3323003	2	Nut, Slotted 1-1/4-12NC	
110	3422692	2	Kingpin	
111	3450808	2	Pin, Cotter 1/4 x 2	
112	3841367	2	Rod-End with Grease Fitting	
113	3841442	2	Rod-End	
114	3900109	4	Screw, Shoulder	
115	4061048	1	Shield, Cylinder (Prior to SN 0200113943)	
116	4713000	2	Flatwasher 1-1/4 Narrow	
117	4740086	2	Washer, Thrust	

SECTION 1 FRAME

FIGURE 1-1. AXLE AND STEERING INSTALLATION - 2WD (CONTINUED)

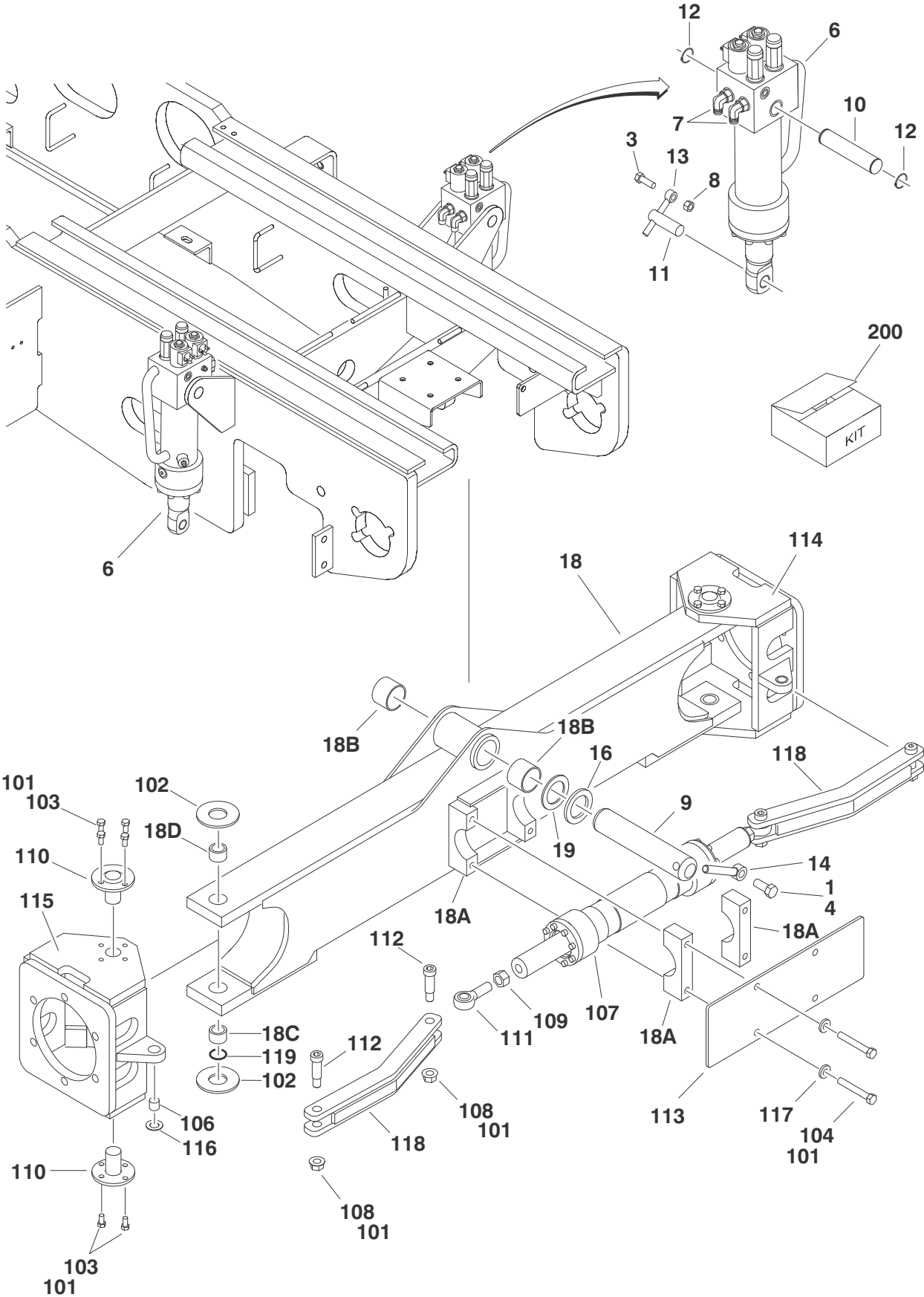
ITEM #	PART NUMBER	QTY.	DESCRIPTION	REV.
118	4891800	4	Flatwasher, Hardened 1/2	
	2780230	Ref	HUB/SPINDLE ASSEMBLY Note: Quantities shown are for 1 assembly. Two Assemblies are required per machine.	A
		Ref		
201	7020033	1	Cap, Dust	
202	7020054	1	Nut, Slotted	
203	7010642	1	Pin, Cotter 2 x 3/16	
204	7020055	1	Washer	
205	7020039	1	Bearing, Cone - Outer	
206	7020042	9	Lugnut	
207	7020035	1	Hub (Includes Inner and Outer Bearing Cups)	
208	7020037	1	Bearing, Cone - Inner	
209	7020040	1	Seal	
210	7020034	1	Spindle	
	2360571	Ref	FRAME WELDMENT	

FIGURE 1-1. AXLE AND STEERING INSTALLATION - 2WD (CONTINUED)

ITEM #	PART NUMBER	QTY.	DESCRIPTION	REV.

SECTION 1 FRAME

FIGURE 1-2. AXLE AND STEERING INSTALLATION - 4WD



SECTION 1 FRAME

FIGURE 1-2. AXLE AND STEERING INSTALLATION - 4WD

ITEM #	PART NUMBER	QTY.	DESCRIPTION	REV.
	0271509	Ref	OSCILLATING AXLE INSTALLATION	E
1	0100011	AR	Locking, Compound	
2	Not Used			
3	0641609	2	Bolt 3/8-16NC x 1-1/8	
4	0642012	1	Bolt 5/8-11NC x 1-1/2	
5	Not Used			
6	1684145	1	Oscillating Axle Cylinder Assembly (See CYLINDER SECTION for Breakdown)	
7	2130406	4	Fitting, 90	
8	3311605	2	Locknut 3/8-16NC	
9	3422592	1	Pin, Axle Pivot	
10	3422745	2	Pin, Cylinder (Top)	
11	3422899	2	Pin, Cylinder (Bottom)	
12	3760115	4	Ring, Retaining	
13	3841143	2	Keeper, Pin	
14	3841258	1	Keeper, Pin	
15	Not Used			
16	4740158	1	Washer, Thrust	
17	Not Used			
18	0271790	1	Axle Weldment Note: If kingpin holes in axle measure 1.503 diameter or larger in any direction, axle weldment must be replaced	C
18A	0561300	4	Block, Cylinder	
18B	0961950	2	Bushing	
18C	0961951	2	Bearing Options: Prior to SN 0200122967 (Note: See Kit)	
18D	0440274	2	SN 0200122967 to SN 0200191606 Bearing Options: Prior to SN 0200122967 (Note: See Kit)	
19	0440291	2	SN 0200122967 to SN 0200191606 Washer, Thrust	
	0271507	Ref	STEERING INSTALLATION - 4WD FRONT	I
101	0100011	AR	Locking, Compound	
102	0440161	4	Thrustwasher Options: Prior to SN 0200122967 (Top & Bottom Kingpin Locations) (Note: See Kit)	
	4740537	AR	SN 0200122967 to SN 0200191606 (.0625) (Top Kingpin Location)	
	4740538	AR	SN 0200122967 to SN 0200191606 (.125) (Top Kingpin Location)	
	4740539	AR	SN 0200122967 to SN 0200191606 (.188) (Top Kingpin Location)	
	4740540	AR	SN 0200122967 to SN 0200191606 (.250) (Top Kingpin Location)	
	0440271	AR	SN 0200122967 to SN 0200191606 (.250) (Bottom Kingpin Location)	

SECTION 1 FRAME

FIGURE 1-2. AXLE AND STEERING INSTALLATION - 4WD (CONTINUED)

ITEM #	PART NUMBER	QTY.	DESCRIPTION	REV.
103	0641606	AR	Bolt 3/8-16NC x 3/4	
		8	Prior to SN 0200122967	
		16	SN 0200122967 to SN 0200191606	
104		4	Bolt Options:	
	0681828		1/2-13NC x 3-1/2 (Grade 8) (Prior to SN 0200113943)	
	0641824		1/2-13NC x 3 (SN 0200113943 to SN 0200191606)	
105	Not Used			
106	0962140	2	Bearing	
107		1	Steer Cylinder Assembly Options (See CYLINDER SECTION for Breakdown):	
	Use 1684412		Prior to SN 0200137518 (was p/n 1683614)	
	1684412		SN 0200137518 to SN 0200191606	
108	3312008	4	Nut 5/8-11NC	
109	3322201	2	Nut 3/4-16NC	
110		4	Kingpin Options:	
	3422716		Prior to SN 0200122967 (2 Mounting Bolts) (Note: See Kit)	
	3423081		SN 0200122967 to SN 0200191606 (4 Mounting Bolts)	
111	3841367	2	Rod-End with Grease Fitting	
112	3900109	4	Screw, Shoulder	
113	4061048	1	Shield, Cylinder (Prior to SN 0200113943)	
114		1	Spindle (Left Side)	
	Use 4130403		Prior to SN 0200122967 (Note: See Kit) (was p/n 4130368)	
	4130403		SN 0200122967 to SN 0200191606	
115		1	Spindle (Right Side)	
	Use 4130404		Prior to SN 0200122967 (Note: See Kit) (was p/n 4130369)	
	4130404		SN 0200122967 to SN 0200191606	
116	4740086	4	Washer, Thrust	
117	4891800	4	Flatwasher, Hardened 1/2	
118	4846070	2	Rod-End	
119	3780182	2	O-Ring (SN 0200122967 to SN 0200191606 Only) (Bottom Kingpin Location Only)	
120 to 123	Not Used			
124	3020029	AR	Grease, Bearing (Not Shown)	

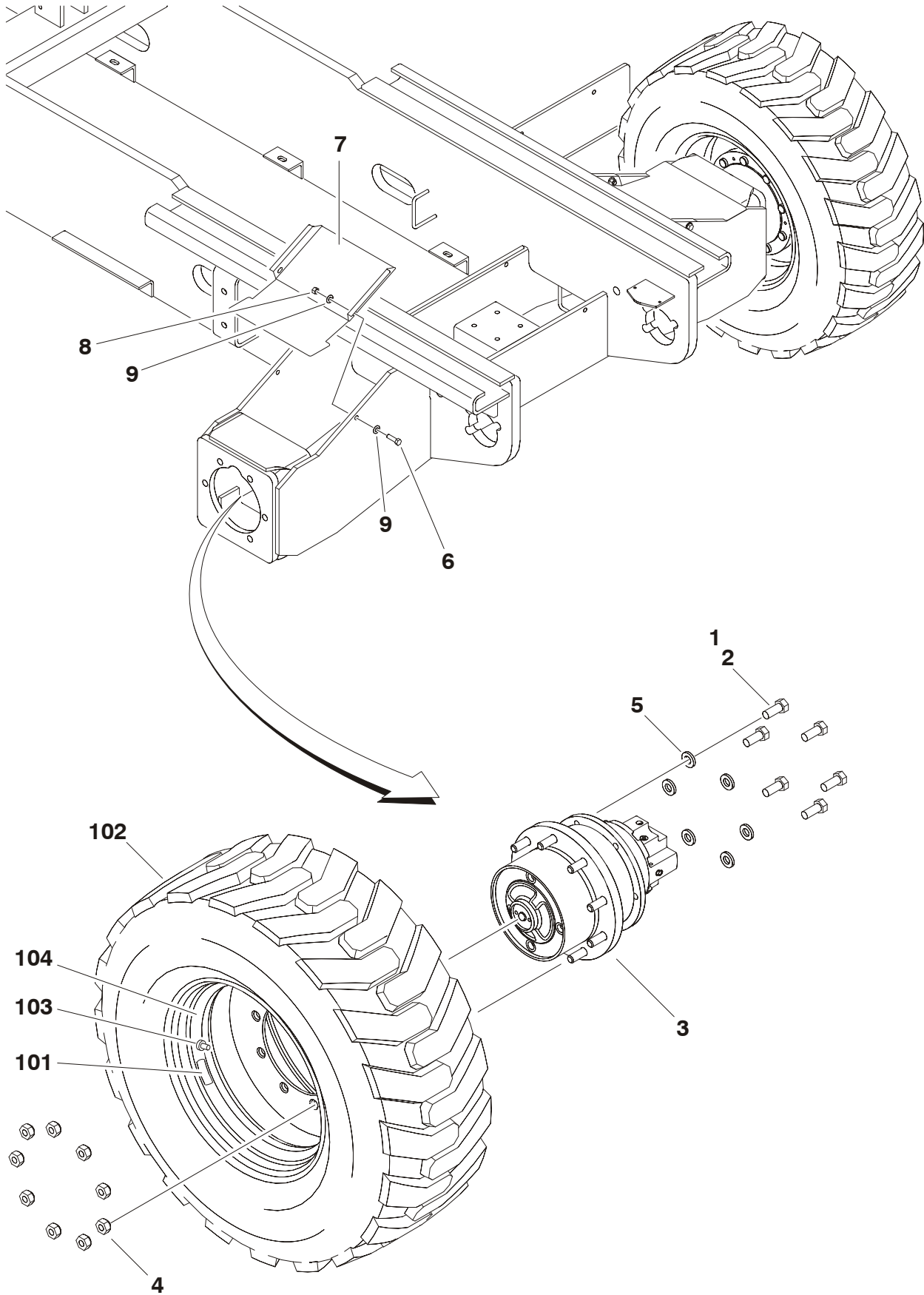
200	2902400	1	Kingpin and Bushings Update Kit for Machines Built Prior to SN 0200122967 (Includes Newer "SN 0200122967 to SN 0200191606 Design Items 18C,18D,102,103,110 & 119). See Field Service Bulletin AWP-04-11. Note: Newer bushings will fit in "Prior to SN 0200122967 axles however if kingpin holes measure 1.503 diameter or larger in any direction, axle weldment must be replaced before installation of kit. Note: Spindles require drilling and tapping for 8 additional kingpin mounting bolts. Newer design kingpins require 4 mounting bolts each.	
	2360571	Ref	FRAME WELDMENT	

FIGURE 1-2. AXLE AND STEERING INSTALLATION - 4WD (CONTINUED)

ITEM #	PART NUMBER	QTY.	DESCRIPTION	REV.

SECTION 1 FRAME

FIGURE 1-3. TIRE AND WHEEL DRIVE INSTALLATIONS



SECTION 1 FRAME

FIGURE 1-3. TIRE AND WHEEL DRIVE INSTALLATIONS

ITEM #	PART NUMBER	QTY.	DESCRIPTION	REV.
		Ref	WHEEL DRIVE INSTALLATIONS	
	0271695	Ref	2WD	D
	0271508	Ref	4WD	E
		Ref	Note: Quantities are per axle.	
1	0100019	AR	Locking, Compound	
2	0682012	12	Bolt 5/8-11NC x 1-1/2	
3		2	Drive Motor/Hub Assembly Options (See DRIVE MOTOR/HUB ASSEMBLY for Breakdown):	
	2780263		2WD	
	2780262		4WD	
4	3300106	18	Lugnut	
5	4892000	12	Washer, Hardened	
6	0641610	4	Bolt 3/8-16NC x 1-1/4	
7	1671056	2	Cover, Rear Axle	
8	3311605	4	Locknut 3/8-16NC	
9	4711600	8	Flatwasher 3/8 Narrow	
		Ref	TIRE AND WHEEL INSTALLATIONS	
		Ref	3394RT Options:	
	0270091	Ref	12 x 16.5 Pneumatic Lug Tire	A
	0270092	Ref	12 x 16.5 Foam-Filled Lug Tire	A
	0270650	Ref	12 x 16.5 Pneumatic Non-Marking Tires	A
	0270653	Ref	12 x 16.5 Foam-Filled Non-Marking Tires	A
	0271785	Ref	33/16LL x 16.1 Foam-Filled Sand Tire	A
	0271718	Ref	33/16LL x 16.5 Pneumatic Lug Tire	A
	0271719	Ref	33/16LL x 16.5 Foam-Filled Lug Tire	A
	0274789	Ref	31 x 15.5-15 Grass Master Tire	A
		Ref	4394RT Options:	
	0271787	Ref	12 x 16.5 Pneumatic Lug Tire	A
	0270092	Ref	12 x 16.5 Foam-Filled Lug Tire	A
	0270653	Ref	12 x 16.5 Foam-Filled Non-Marking Tires	A
	0274371	Ref	12 x 16.5 Pneumatic Non-Marking Tires (Counterweight Required)	A
	0271785	Ref	33/16LL x 16.1 Foam-Filled Sand Tire	A
	0271788	Ref	33/16LL x 16.5 Pneumatic Lug Tire	A
	0271719	Ref	33/16LL x 16.5 Foam-Filled Lug Tire	A
	0270074	2	12 x 16.5 Pneumatic Right Side Lug Tire	A
	0270075	2	12 x 16.5 Pneumatic Left Side Lug Tire	A
	0270076	2	12 x 16.5 Foam-Filled Right Side Lug Tire	A
	0270077	2	12 x 16.5 Foam-Filled Left Side Lug Tire	A
	0270654	2	12 x 16.5 Foam-Filled Right Side Non-Marking Tire	A
	0270655	2	12 x 16.5 Foam-Filled Left Side Non-Marking Tire	A
	0270651	2	12 x 16.5 Pneumatic Right Side Non-Marking Tire	A
	0270652	2	12 x 16.5 Pneumatic Left Side Non-Marking Tire	A
	0272268	4	33/16LL x 16.1 Foam-Filled Right Side Sand Tire	C
	0257755	2	33/16LL x 16.5 Pneumatic Right Side Lug Tire	C
	0257756	2	33/16LL x 16.5 Pneumatic Left Side Lug Tire	C

SECTION 1 FRAME

FIGURE 1-3. TIRE AND WHEEL DRIVE INSTALLATIONS (CONTINUED)

ITEM #	PART NUMBER	QTY.	DESCRIPTION	REV.
	0258011	2	33/16LL x 16.5 Foam-Filled Right Side Lug Tire	D
	0258012	2	33/16LL x 16.5 Foam-Filled Left Side Lug Tire	D
	4520571	4	31 x 15.5-15 Grass Master Tire	B
		Ref	Note: Assemblies may require ballast/foam filling to manufacturer's specifications prior to installing on a machine. Refer to Operation & Safety or Service & Maintenance Manuals. Purchase individual tire and/or rim only if able to foam fill tire & wheel assembly, otherwise, purchase complete assembly,	
101		1	Decal Options:	
	1702740		Decal - 90PSI (Pneumatic Only):	
	1702137		Decal - 60PSI (Pneumatic Only) (Grass Master):	
102		1	Tire Options:	
	4520216		12 x 16.5 NHS Lug Tire	
	4520240		12 x 16.5 OTR NHS Non-Marking Tire	
	4520262		33/16LL x 16.1 Lug Tire	
	4520217		33/16LL x 16.5 Lug Tire	
	4520576		31 x 15.5-15 Grass Tire	
103		1	Valve, Air Options:	
	4640113		With Pneumatic Tire/Wheel Assemblies	
	8786514		With 0258011 & 0258012 Foam-Filled Tire/Wheel Assemblies	
	4640113		All Foam-Filled Tire/Wheel Assemblies except 025811 & 0258012	
104		1	Rim, Wheel	
	4860213		16.5 x 9.75 (Use with 12 x 16.5 Lug Tires)	
	4860179		16.5 x 12 (Use with 33/16LL x 16.5 Lug Tires)	
	4860237		19.5 x 14 (Use with 33/16LL x 16.1 Sand Tires)	
	4520570		15 x 13 (Use with 31 x 15.5-15 Grass Tire)	

FIGURE 1-3. TIRE AND WHEEL DRIVE INSTALLATIONS (CONTINUED)

ITEM #	PART NUMBER	QTY.	DESCRIPTION	REV.

SECTION 1 FRAME

FIGURE 1-4. DRIVE MOTOR/HUB ASSEMBLY

