



---

# ***Illustrated Parts Manual***

## ***Model G6-42P***

S/N 0189001 thru 0189345  
& 0160000230 & After

**91404001**

*Revised  
March 31, 2014*







# EFFECTIVITY PAGE

December 17, 2004 - A - Revised Manual

June 3, 2005 - B - Revised Manual

September 30, 2005 - C - Revised Manual

April 24, 2006 - D - Revised Manual

August 25, 2006 - E - Revised Manual

February 23, 2007 - F - Revised Manual

July 6, 2007 - G - Revised Manual

November 26, 2008 - H - Revised Manual

February 25, 2010 - I - Revised Manual

September 24, 2012 - J - Revised Manual

January 3, 2013 - K - Revised Manual

March 31, 2014 - L - Revised Manual

# EFFECTIVITY PAGE

# TABLE OF CONTENTS

FIGURE NO.	TITLE	PAGE NO.
<b>SECTION 1 –</b>		
<b>FRAME &amp; ATTACHING PARTS</b> .....		<b>1-1</b>
1-1	Frame Shrouding & Trim .....	1-2
1-2	Rear Axle & Attaching Parts .....	1-8
1-3	Front Axle Mounting .....	1-12
 <b>SECTION 2 –</b>		
<b>BOOM</b> .....		<b>2-1</b>
2-1	First Boom Section .....	2-2
2-2	Bearing Pads, Spacers & Shims, (First Boom Section) .....	2-4
2-3	Second Boom Section .....	2-6
2-4	Bearing Pads, Spacers & Shims, (Second Boom Section) .....	2-8
2-5	Third Boom Section .....	2-12
2-6	Bearing Pads, Spacers & Shims, (Third Boom Section) .....	2-14
2-7	Push/Beam Extend Chain & Roller Assembly .....	2-16
2-8	Quick Switch Assembly .....	2-18
 <b>SECTION 3 –</b>		
<b>ATTACHMENTS</b> .....		<b>3-1</b>
3-1	Tilt Carriage .....	3-2
3-2	Buckets .....	3-6
3-3	48 Inch & 72 Inch Slope Piler Carriage .....	3-8
3-4	Side Tilt Carriage .....	3-10
3-5	Truss Boom .....	3-12
3-6	10 Foot & 15 Foot Truss Boom With Winch .....	3-16
3-7	12 Foot Truss Boom With Winch .....	3-18
3-8	100 Degree Swing Fork Assembly .....	3-20
3-9	90 Degree Swing Carriage .....	3-24
3-10	Sheet Material Handler .....	3-26
3-11	Winch Installation .....	3-30
3-12	100 Degree Drywall Swing Carriage Assembly .....	3-32
3-13	Personnel Platform .....	3-36
3-14	Fork Mounted Platform .....	3-38
3-15	100 Degree Swing Carriage With Side Tilt .....	3-42
3-16	Forks .....	3-46
3-17	Fork Mounted Lifting Hook .....	3-48
3-18	Grapple Bucket .....	3-52
3-19	Fork Pin Lock Installation .....	3-54
3-20	6 Foot Mast With 48 Inch & 72 Inch Carriage .....	3-56
3-21	8 Foot Standard Mast .....	3-58
3-22	8 Foot Side Tilt Electric Mast .....	3-62

# TABLE OF CONTENTS

FIGURE NO.	TITLE	PAGE NO.
<b>SECTION 4 –</b>		
<b>ENGINE &amp; ATTACHING PARTS</b> .....		<b>4-1</b>
4-1	Engine Assembly, LH View .....	4-2
4-2	Engine Assembly, RH View .....	4-14
4-3	John Deere Engine .....	4-26
4-4	Fuel Tank & Lines .....	4-38
4-5	Radiator Assembly .....	4-42
4-6	Air Cleaner & Installation .....	4-46
4-7	Exhaust Installation .....	4-52
<b>SECTION 5 –</b>		
<b>DRIVE TRAIN</b> .....		<b>5-1</b>
5-1	Front Axle Assembly - Rockwell .....	5-2
5-2	Front Axle - Rockwell .....	5-4
5-3	Carrier Assembly - Rockwell .....	5-6
5-4	Brake Assembly - Rockwell .....	5-10
5-5	Left & Right Housing & Axle & Wheel Flange Assemblies - Rockwell .....	5-12
5-6	Front Axle Assembly - Carraro .....	5-14
5-7	Front Axle - Carraro .....	5-16
5-8	Carrier Assembly - Carraro .....	5-18
5-9	Brake Assembly - Carraro .....	5-22
5-10	Axle Housing Assembly - Carraro .....	5-24
5-11	Rear Axle Drive Hub .....	5-26
5-12	Tires & Rims .....	5-30
<b>SECTION 6 –</b>		
<b>CAB</b> .....		<b>6-1</b>
6-1	Open Cab .....	6-2
6-2	Cab Enclosure With Heater Option .....	6-4
6-3	Cab Enclosure .....	6-10
6-4	Cab Enclosure .....	6-12
6-5	Suspension Seat .....	6-14
6-6	Dash Assembly .....	6-16
6-7	Instrument Panel .....	6-18
<b>SECTION 7 –</b>		
<b>CONTROLS</b> .....		<b>7-1</b>
7-1	Tilt & Sway .....	7-2
7-2	Accelerator Pedal Assembly .....	7-4
7-3	Steering Column & Attaching Parts .....	7-10
7-4	Brake Pedal Assembly .....	7-12
7-5	Foot Switch .....	7-14
7-6	Boom Joystick Assembly .....	7-18
7-7	Joystick Assembly .....	7-20

# TABLE OF CONTENTS

FIGURE NO.	TITLE	PAGE NO.
7-8	RH Horizontal Control Assembly .....	7-22
<b>SECTION 8 –</b>		
	<b>HYDRAULIC CIRCUITS .....</b>	<b>8-1</b>
8-1	Oil Supply Lines .....	8-2
8-2	Dump Circuit .....	8-4
8-3	Front Drive Motor .....	8-8
8-4	Rear Drive Motors .....	8-10
8-5	Steering Cylinders .....	8-14
8-6	Service/Parking Brake .....	8-16
8-7	Boom Joystick .....	8-18
8-8	Lift Cylinder .....	8-20
8-9	Crowd Cylinder .....	8-22
8-10	Tilt & Compensating Cylinder .....	8-24
8-11	Sway Cylinder .....	8-28
<b>SECTION 9 –</b>		
	<b>HYDRAULIC COMPONENTS .....</b>	<b>9-1</b>
9-1	Lift Cylinder .....	9-2
9-2	Crowd Cylinder - Iowa .....	9-12
9-3	Tilt Cylinder - Iowa .....	9-16
9-4	Compensating Cylinder .....	9-20
9-5	Sway Cylinder - Iowa .....	9-26
9-6	Steering Cylinder - Iowa .....	9-30
9-7	Main Control Valve .....	9-34
9-8	Hydrostatic Transmission .....	9-38
9-9	Implement Pump .....	9-44
9-10	Front Drive Motor .....	9-46
9-11	Rear Drive Motors .....	9-48
9-12	Hydraulic Tank Assembly .....	9-50
9-13	Oil Filter Assembly .....	9-52
9-14	Traction Lock Valve .....	9-54
9-15	Inching Valve .....	9-56
9-16	Brake Valve .....	9-58
9-17	Priority Flow Divider Valve & Assembly .....	9-62
9-18	Thermal Bypass Valve .....	9-64
9-19	Sway Cylinder Valve .....	9-66
9-20	Solenoid Valve .....	9-70
9-21	Grapple Bucket Cylinder .....	9-72
9-22	Side Tilt Carriage Cylinder .....	9-74
9-23	72 Inch 90 Degree Swing Carriage Cylinder .....	9-76

# TABLE OF CONTENTS

FIGURE NO.	TITLE	PAGE NO.
<b>SECTION 10 –</b>		
	<b>ELECTRICAL</b> .....	<b>10-1</b>
10-1	Battery & Cables .....	10-2
10-2	Engine Harness .....	10-4
10-3	Boom Work Lights Harness .....	10-10
10-4	Cab Work Light Harness .....	10-12
10-5	Cab Work Light & Beacon Light Harness .....	10-14
10-6	Frame Road Lights Harness .....	10-16
10-7	Cab Road Lights Harness .....	10-18
<b>SECTION 11 –</b>		
	<b>DECALS</b> .....	<b>11-1</b>
11-1	Cab & Frame Decals .....	11-2
11-2	Boom Decals .....	11-10
<b>SECTION 12 –</b>		
	<b>OPTIONS</b> .....	<b>12-1</b>
12-1	Turbo Option .....	12-2
12-2	Turbo Engine Assembly, LH View .....	12-6
12-3	Turbo Engine Assembly, RH View .....	12-14
12-4	John Deere Turbo Engine .....	12-22
12-5	Turbo Radiator Assembly .....	12-26
12-6	Turbo Air Cleaner & Installation .....	12-28
12-7	Turbo Exhaust Installation .....	12-32
12-8	Heater Option Assembly .....	12-34
12-9	Suspension Seat .....	12-40
12-10	Work Light Package .....	12-42
12-11	Cold Start Installation .....	12-46
12-12	Block Heater Installation .....	12-48
12-13	Stabilizer Option .....	12-50
12-14	Stabilizer Cylinder - Iowa .....	12-52
12-15	Beacon Light Package .....	12-54
12-16	Tilt on Joystick With LH Sway .....	12-56
12-17	Tilt on Joystick With RH Sway .....	12-58
12-18	LH Sway Option Assembly .....	12-62
12-19	RH Tilt & Sway Assembly .....	12-64
12-20	Auxiliary Boom Assembly .....	12-66
12-21	LH Auxiliary Hydraulics Assembly .....	12-70
12-22	RH Auxiliary Hydraulics Assembly .....	12-72
12-23	Auxiliary Electrics Assembly .....	12-74
12-24	Main Control Valve With Auxiliary Hydraulics .....	12-82
12-25	Boom Joystick With Tilt .....	12-90
12-26	Sway Cylinder .....	12-92
12-27	Swing Cylinder .....	12-94

# TABLE OF CONTENTS

<b>FIGURE NO.</b>	<b>TITLE</b>	<b>PAGE NO.</b>
12-28	5 Inch & 8 Inch Winch .....	12-96
12-29	Winch Motor .....	12-100
12-30	Truss Boom Pressure Reducer Valve - 1200 PSI .....	12-102
12-31	Truss Boom Pressure Reducer Valve - 1360 PSI .....	12-104
12-32	Starter Kit .....	12-106
12-33	Fuel/Water Separator Installation .....	12-108
12-34	Standard Seat Replacement Kit .....	12-110
12-35	Heavy Seat Replacement Kit .....	12-112
12-36	Work Light Installation .....	12-114
12-37	Pintle Hook Installation .....	12-122
12-38	Winch .....	12-124
12-39	Swing Cylinder .....	12-126
12-40	Road Lights Installation .....	12-128
12-41	Beacon Light Installation .....	12-132
12-42	Stabilizer Valve .....	12-136
<b>SECTION 13 –</b>		
	<b>RECOMMENDED SPARE PARTS .....</b>	<b>13-1</b>
<b>SECTION 14 – PART NUMBER INDEX .....</b>		<b>14-1</b>

# TABLE OF CONTENTS

FIGURE NO.

TITLE

PAGE NO.

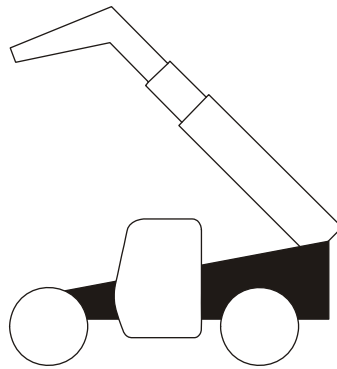
---

---



# SECTION 1

## FRAME & ATTACHING PARTS





# FRAME & ATTACHING PARTS

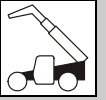
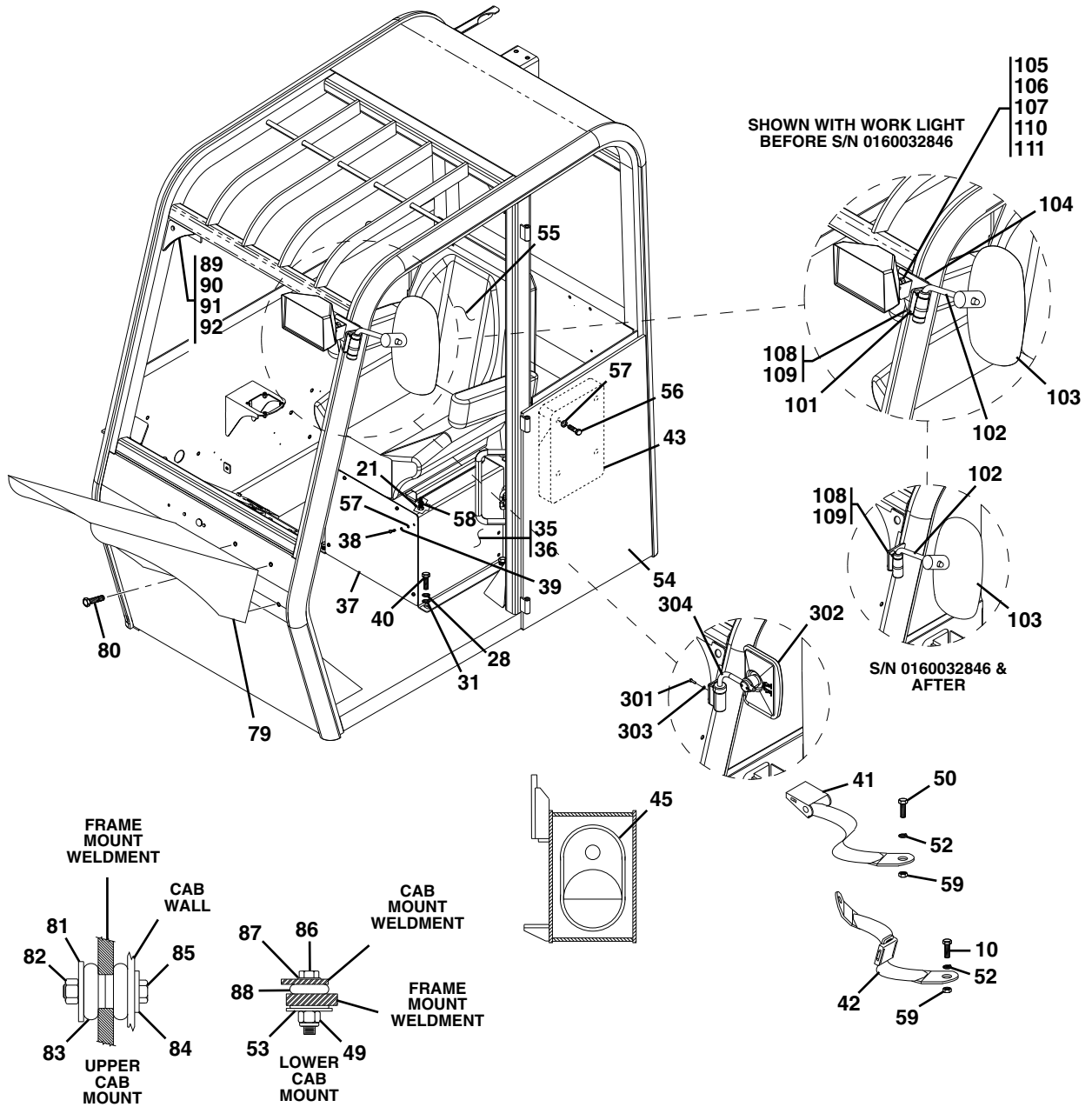


Figure 1-1 Frame Shrouding & Trim (Continued)



PAP23310



## FRAME & ATTACHING PARTS

Figure 1-1 Frame Shrouding & Trim

Item	Part Number	Qty.	Description	Rev.
	14404646	AR	T-9 METAL PROTECTANT, (1 gal.)	
	14404645	AR	T-9 METAL PROTECTANT, (12 oz.)	
1	91403574	Ref	BACK-UP ALARM, ( <b>Before S/N 0160016458</b> ), (no longer available, use Kit K1 for replacement)	
	8270621	1	BACK-UP ALARM, ( <b>S/N 0160016458 &amp; After</b> )	
2	0641406	2	HEX HD CAPSCREW, 1/4-20X3/4	
3	8305624	2	HEX NUT, 1/4-20	
4	4711400	2	FLAT WASHER, 1/4	
5	91140001	1	COUNTERWEIGHT, ( <b>no pintle hook</b> )	
	1001091458	1	COUNTERWEIGHT, ( <b>with pintle hook</b> )	
6	88561011	4	FLAT WASHER, 1	
7	83201183	4	HEX HD CAPSCREW, 1-18X6, (torque to 545-595 lb-ft)	
8	NSS	1	FRAME WELDMENT	
9	91404346	2	ROD CLIP	
10	88201551	2	HEX HD CAPSCREW, 7/16-20X1-1/2, GR5, ( <b>S/N 0189001 thru 0160015436</b> )	
11	4761500	1	LOCKWASHER, 5/16	
12	91143357	1	HORN	
13	91403268	1	ENGINE COVER, (includes items 9, 24, 47, 48, 51, 60 thru 78 & 93)	E
	91404275	1	ENGINE COVER KEY	
14	88261029	6	SOCKET BUTTON HD CAPSCREW, 3/8-16X1	
15	80263053	1	MIRROR	
16	91406094	1	MIRROR BRACKET	
17	88201036	3	HEX HD CAPSCREW, 3/8-16X1-1/4, GR5	
18	88501106	3	HEAVY HEX JAM NUT, 3/8-16	
19	91401347	1	MIRROR MOUNT BRACKET PLATE	
20	91406117	1	FRONT SHEET METAL COVER	
21	77143006	21	WHIZ-LOCKNUT, 5/16-18, ( <b>S/N 0189001 thru 0160015436</b> )	
22	91403441	1	DUST SHIELD	
23	91083533	14	FENDER WASHER	
24	91404344	3	ALUMINUM WEAR PLATES	
25	91403582	3	BEARING PAD	
26	91401524	AR	SHIM	
27	88201534	4	HEX HD CAPSCREW, 3/8-24X1, GR5	
28	88551011	14	LOCKWASHER, 3/8	
29	88261030	4	SOCKET BUTTON HD CAPSCREW, 3/8-16X1-1/4	
30	90027470	4	HARDENED WASHER, 3/8	
31	88561004	6	FLAT WASHER, 3/8	
32	91403600	1	U-BOLT	
33	88501006	2	HEX NUT, 3/8-16	
34	91401570	1	LATCH PLATE	
35	91405051	1	SEAT RISER ASSY, (includes items 36 thru 39)	
36	91406115	1	RISER WELDMENT, ( <b>S/N 0189001 thru 0160015436</b> )	
	91516044	1	RISER WELDMENT, ( <b>S/N 0160015465 &amp; After</b> )	
37	91401415	1	ACCESS COVER, ( <b>S/N 0189001 thru 0160015436</b> )	
38	88261015	6	SOCKET BUTTON HD CAPSCREW, 1/4-20X5/8	
39	88551009	6	LOCKWASHER, 1/4	
40	88201035	4	HEX HD CAPSCREW, 3/8-16X1, GR5	

# FRAME & ATTACHING PARTS



**Figure 1-1 Frame Shrouding & Trim (Continued)**

Item	Part Number	Qty.	Description	Rev.
41	91033029	1	SEAT BELT, (not used with optional seat), (includes items 50 & two of items 52 & 59)	
42	91513099	1	TETHER, <b>(S/N 0189001 thru 0160015436)</b> , (includes items 10, 52 & 59)	
43	91403230	1	MANUAL CASE	
44	88201016	1	HEX HD CAPSCREW, 5/16-18X1/2, GR5	
45	90206202	45 in	TRIM-LOCK	
46	91143220	118 in	TRIM-LOCK	
47	91404343	1	REINFORCING PLATE	
48	91404342	4	RIVET WASHERS	
49	88501012	4	HEX LOCKNUT, 3/4-10	
50	88201549	2	HEX HD CAPSCREW, 7/16-20X1, GR5	
51	91404437	13 ft	BULB SEAL	
52	88551012	4	LOCKWASHER, 7/16, <b>(S/N 0189001 thru 0160015436)</b>	
53	91403098	4	TAIL WASHER	
54		Ref	OPEN CAB ASSY, (see Figure 6-1 for details)	
55		1	TRIM LINE SEAT, (no longer available, see Figure 12-34 for details), <b>(S/N 0189001 thru 0160015436)</b>	
		Ref	SUSPENSION SEAT WITH 2 IN SEAT BELT, (see Figure 6-5 for details), <b>(S/N 0160015465 &amp; After)</b>	
56	88201005	4	HEX HD CAPSCREW, 1/4-20X1, GR5	
57	88561002	10	FLAT WASHER, 1/4	
58	88561003	4	FLAT WASHER, 5/16, <b>(S/N 0189001 thru 0160015436)</b>	
59	88501307	4	HEX NUT, 7/16-20, <b>(S/N 0189001 thru 0160015436)</b>	
60	91404450	1	HINGE, 36 IN	
61	91514246	2	PROP BRACKET, (13mm)	
62	91474411	23	HEX HD SCREW, 8X3/4	
63	91474412	2	LOCKWASHER, 5/16	
64	91474413	2	NUT, 5/16	
65	91474414	2	BOLT, 5/16X1-1/4	
66	91404345	1	LINKAGE ROD	
67	91474416	4	RIVETS, 3/16	
68	91474417	1	PADDLE HANDLE GASKET	
69	91404442	1	ROTARY LATCH	
70	91404441	1	PADDLE HANDLE	
71	80384162	6	BOLT, 3/8X1-1/2	
72	80384164	6	NUT, 3/8	
73	91404347	2	EXPANDED SCREEN	
74	91474423	1	GAS PROP, 225#	
75	8340035	2	BALL STUD, (13mm)	
76	7023483	4	PROP CLIP	
77	91404348	1	GAS PROP, 100#	
78	91474427	1	LATCH PACKING PLATE	
79	91401487	1	CAB FENDER	
80	80973025	4	WHIZ-LOCK BOLT, 3/8-16X1	
81	91403217	2	REBOUND WASHER	
82	88501014	2	HEX NUT, 7/8-9	
83	91403153	4	SHOCK MOUNT	
84	91403325	2	HARDENED WASHER	
85	77321274	2	HEX HD CAPSCREW, 7/8-9X5	



## FRAME & ATTACHING PARTS

Figure 1-1 Frame Shrouding & Trim (Continued)

Item	Part Number	Qty.	Description	Rev.
86	83201058	4	HEX HD CAPSCREW, 3/4-10X3-3/4	
87	86681572	4	HARD WASHER, 13/16	
88	91403097	4	CAB ISOLATOR MOUNT	
89	91033320	Ref	TILT GAUGE, <b>(Before S/N 0160005745)</b> , (no longer available, use 8466306 for replacement)	
	8466306	1	TILT GAUGE, (with adhesive), <b>(S/N 0160005745 &amp; After)</b>	
90	88204912	1	HEX HD CAPSCREW, 1/4-20X1, GR5, <b>(Before S/N 0160005745)</b>	
91	88561107	1	FLAT WASHER, 1/4, <b>(Before S/N 0160005745)</b>	
92	88521204	1	HEX LOCKNUT, 1/4-20, <b>(Before S/N 0160005745)</b>	
93	7027772	1	ADHESIVE KIT, (includes 3 tubes & applicator)	
94	91411071	1	COVER SUPPORT	
95	91513197	AR	BULB SEAL	
97	88201532	2	HEX HD CAPSCREW, 3/8-24X3/4, GR5	
	1001096344	1	LH MIRROR INSTALLATION, <b>(Before S/N 0160032846)</b> , (includes items 101 thru 111)	B
	1001097149	Ref	LH MIRROR INSTALLATION, <b>(S/N 0160032846 &amp; After)</b> , (no longer available, order 1001115153 or items 102, 103, 108 & 109 for service)	B
101	1001096327	1	MIRROR BRACKET	
102	8866530	1	MIRROR MOUNT ARM ASSY	
103	8866514	1	MIRROR HEAD	
104	4420060	AR	DOUBLE SIDED TAPE	
105	1001096728	1	BOLT, 1/2-13	
106	4751800	1	WASHER, 1/2	
107	4761800	1	LOCKWASHER, 1/2	
108	8303799	2	HEX HD CAPSCREW, M6X1X14mm, GR8.8	
109	8307024	2	LOCKWASHER, M6	
110	88501008	1	HEX NUT, 1/2-13	
111	91403503	1	SPACER	
218	0100019	AR	LOCTITE® 271™	
	1001115153	1	LH MIRROR INSTALLATION, (includes items 301 thru 304)	A
301	0700610	2	HEX HD CAPSCREW, M6X20, GR8.8	
302	3140007	1	RECTANGULAR MIRROR	
303	8307024	2	LOCKWASHER, M6	
304	1001114675	1	MIRROR ARM	
401	1001116274	1	MOLDED RESISTOR	
402	NSS	1	MOUNTING BAR	
403	86683480	2	BUTT CONNECTOR	
K1	2915184	1	BACK-UP ALARM SERVICE KIT, (includes items 1 thru 4, 402 & 403)	A

# FRAME & ATTACHING PARTS



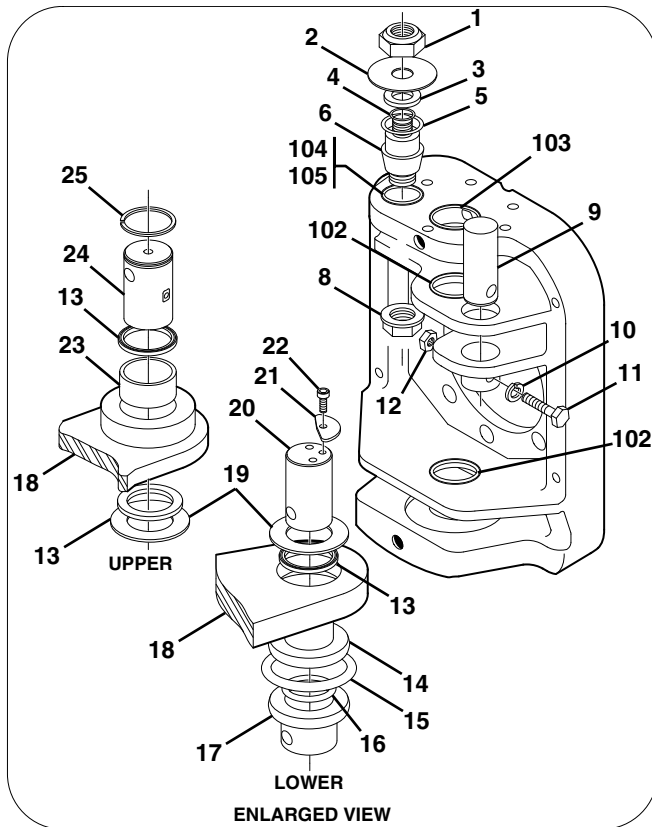
Figure 1-1 Frame Shrouding & Trim (Continued)

Item	Part Number	Qty.	Description	Rev.



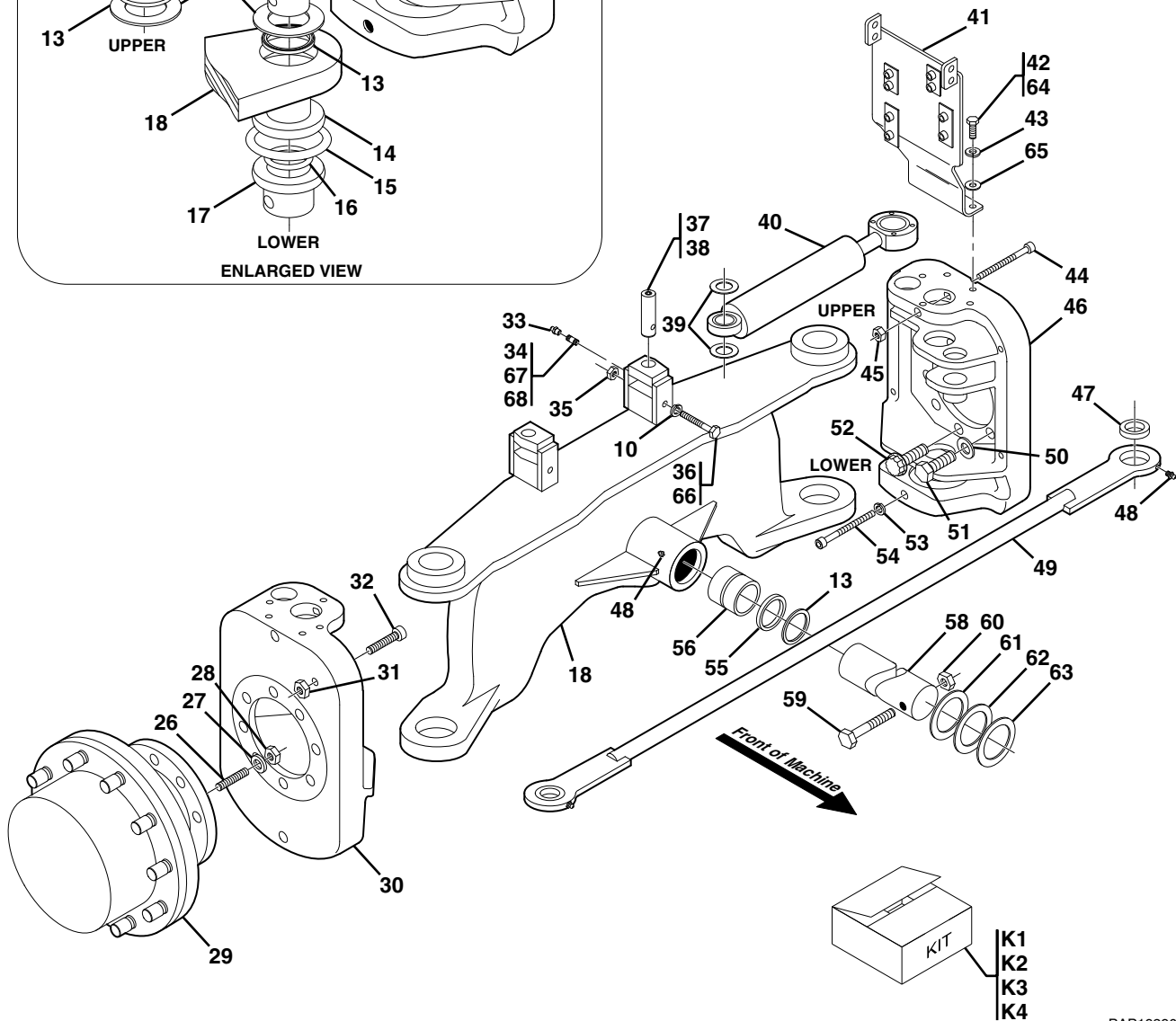
# FRAME & ATTACHING PARTS

### Figure 1-2 Rear Axle & Attaching Parts



#### NOTES:

1. CYLINDER BASE END MUST BE FREE TO ROTATE. SHIM STEERING CYLINDER BASE END AS REQUIRED TO MAINTAIN A TOTAL MAXIMUM GAP OF 1/16 IN
2. SHIM BOTTOM KNUCKLES AS REQUIRED TO MAINTAIN NO MORE THAN 1/32 IN MOVEMENT. SHIM TOP KNUCKLES TO MAINTAIN NO MORE THAN 1/16 IN GAP. MUST HAVE A MINIMUM OF ONE SHIM.
3. INSTALL 5/8 LONG THREAD ON STUD INTO DRIVE HUB, (SHORTEST LENGTH THREADS ON STUD)



PAP19290



# FRAME & ATTACHING PARTS



Figure 1-2 Rear Axle & Attaching Parts

Item	Part Number	Qty.	Description	Rev.
1	88521312	2	LOCKNUT, 3/4-10, (torque to 160-175 lb-ft)	
2	91081415	2	DIRT SHIELD	
3	91041732	2	SPACER	
4	88591019	2	O-RING	
5	3790226	2	O-RING	
6	91343052	2	ROD END STEER CYLINDER PIN	
8	1001099173	2	FLANGE NUT	
9	91403082	2	TIE ROD PIN	
10	88551011	4	LOCKWASHER, 3/8	
11	83201021	2	HEX HD CAPSCREW, 3/8-16X3	
12	88521306	2	HEX LOCKNUT, 3/8-16, (nylok)	
13	91403145	8	WIPER SEAL	
14	91403034	2	LOWER BUSHING	
15	91403146	2	O-RING	
16	3790230	2	O-RING	
17	91401081	2	THRUST BUSHING	
18	91406017	1	REAR AXLE WELDMENT, (includes items 14, 23, 56 & 69)	
19	91403163	AR	KING PIN SHIM, (see note #2)	
	91403164	AR	KING PIN SHIM, (see note #2)	
	91403165	AR	KING PIN SHIM, (see note #2)	
	91403166	AR	KING PIN SHIM, (see note #2)	
20	91403078	2	LOWER KING PIN	
21	91403067	2	RETAINING WASHER	
22	88211068	2	SOCKET HD CAPSCREW, 3/8-16X5/8, GR8	
23	91403031	2	UPPER BUSHING	
24	91403079	2	UPPER KING PIN	
25	88581325	2	SNAP RING	
26	91123092	8	STUD, (see note #3)	
27	85401340	8	HARD WASHER	
28	91083449	8	HEX NUT, 1/2-13	
29		Ref	DRIVE HUB, (see Figure 5-11 for details)	
30	Use Kit K3	1	RH KNUCKLE	
31	88501110	2	HEX NUT, 5/8-11	
32	88212321	2	SOCKET HD CAPSCREW, 5/8-11X3-3/4, GR8	
33	90028740	2	FEMALE GREASE FITTING	
34	88701021	2	NIPPLE, 1/8X2	
35	88501006	2	HEX NUT, 3/8-16	
36	83201144	2	HEX HD CAPSCREW, 3/8-16X5-3/4	
37	91403372	2	BASE END STEER CYLINDER PIN	
38	88711280	2	HEX SOCKET PIPE PLUG, 1/8	
39	91403065	AR	KING PIN SHIM, (see note #1)	
	91403066	AR	KING PIN SHIM, (see note #1)	
40		Ref	STEERING CYLINDER, (see Figure 9-6 for details)	
41	91406098	1	LH TUBE SUPPORT	
	91406099	1	RH TUBE SUPPORT	
42	0641608	4	HEX HD CAPSCREW, 3/8-16X1, GR5	
43	4761600	4	LOCKWASHER, 3/8	
44	88212272	2	SOCKET HD CAPSCREW, 5/8-11X8, GR8	
45	88521210	2	HEX LOCKNUT, 5/8, (nylok)	



**FRAME & ATTACHING PARTS**

**Figure 1-2 Rear Axle & Attaching Parts (Continued)**

Item	Part Number	Qty.	Description	Rev.
46	Use Kit K4	1	LH KNUCKLE	
47	8050001	2	SELF-ALIGNING BUSHING, (tie rod)	
48	88671001	4	STRAIGHT LUBE FITTING, 1/8	
49	91406021	1	TIE ROD WELDMENT, (includes item 47)	
50	86681572	12	HARDENED WASHER, 3/4	
51	83201006	12	HEX HD CAPSCREW, 3/4-10X2	
52	91043222	4	12 POINT SCREW, 3/4-10X2	
53	88551154	2	LOCKWASHER, 3/4, (hi-collar)	
54	88212285	2	SOCKET HD CAPSCREW, 3/4-10X5, GR8	
55	91403145	2	WIPER SEAL	
56	91403033	2	PIVOT TUBE BUSHING	
58	91081177	1	REAR AXLE PIN	
59	90020247	1	HEX HD CAPSCREW, 1-1/4-7X6	
60	88521020	1	LOCKNUT, 1-1/4-7	
61	91403174	AR	SHIM, (.125 thick)	
62	91403173	AR	SHIM, (.109 thick)	
63	91403172	AR	SHIM, (.062 thick)	
64	14404793	AR	UNION 76 MEGAPLEX GREASE	
65	4711600	4	FLAT WASHER, 3/8	
67	14403303	AR	LOCTITE PIPE SEALANT	
68	14404102	AR	LOCTITE® 277™	
69	91163019	2	BUSHING, (not shown)	
102	91403354	2	BUSHING	
103	91403355	1	BUSHING	
104	91551039	1	BUSHING	
105	14404978	AR	LOCTITE® 641™	
201	14404067	AR	SILICON SEALANT	
K1	91415039	1	STEERING KNUCKLE KIT, (includes items 2 thru 5, 13 thru 17, 19 thru 25, 44, 45, 53 & 54)	
K2	91415040	1	STEERING CYLINDER PIN KIT, (includes one each of items 1 thru 8, one kit needed for each side)	
K3	91555032	AR	RH KNUCKLE KIT, (includes items 8, 30 & 102 thru 105)	
K4	91555031	AR	LH KNUCKLE KIT, (includes items 8, 46 & 102 thru 105)	