



Illustrated Parts Manual

Models G5-18A 2505H Agrovector 25.5

S/N 0160053000 & After including
0160051045, 0160051047,
0160051049, 0160051194 &
0160051359

31200725

*Revised
January 22, 2014*



EFFECTIVITY PAGE

May 10, 2013 - A - Original Issue Of Manual

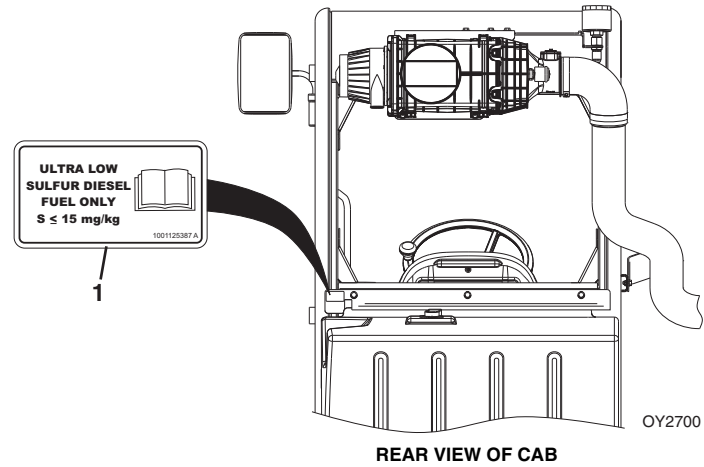
July 17, 2013 - B - Revised Manual

September 30, 2013 - C - Revised Manual

January 22, 2014 - D - Revised Manual

EFFECTIVITY PAGE

Machine Configuration



Two configurations of each machine are included in this manual. Determine if machine is equipped with Ultra Low Sulfur Fuel Decal (1).

If equipped with the Ultra Low Sulfur decal, all specific references to this machine configuration will be referred to as Ultra Low Sulfur (**ULS**) from this point forward.

If not equipped with the Ultra Low Sulfur decal, all specific references to this machine configuration will be referred to as Low Sulfur (**LS**) from this point forward.

General Information

1. MACHINE IDENTIFICATION

Machines are identified by model & in some cases a combination of model, serial number (S/N) or regional standard (CE, AUS, ANSI). Components may also be identified by S/N or manufacturer. Common components that may be identified by these characteristics are attachments, engine, transmission & hydraulic components.

2. PARTS MANUAL ORGANIZATION

Product information in this manual is organized under section titles. Frame & Attaching Parts, Drive Train & Electrical are a few examples. Each section is organized by Figure & page number. The information within the Figure is then organized by item number, part number, description & corresponding illustration(s).

3. TABLE OF CONTENTS

A table of contents (TOC) is found toward the beginning of the manual. Figure number, description & page number are provided for quick reference to the page containing the related information.

4. RECOMMENDED SPARE PARTS

The Recommended Spare Parts, located near the end of the manual, references most frequently used maintenance parts.

5. PART NUMBER INDEX

A numerical index listing all part numbers & the corresponding page number(s) appears at the back of the manual.

6. NON-SERVICED PARTS

In some instances it is necessary to display non-serviced parts, assemblies or installations. In the case of assemblies & installations there will be a Ref in the Qty column & a note after the item description stating what is available for service within. In the case of parts that are not available for service within assemblies or components there will be a NSS (Not Sold Separately) listed in the part number column of the manual.

7. PARTS LIST ITEM NUMBERS

Numbers shown in the Item column correspond to numbers used in the associated illustration(s). Item numbers which are missing from sequence & are not shown in the illustration(s) are not used on that page.

8. INDENTED PART DESCRIPTION

An indented part description is included in the item under which it is indented.

9. ABBREVIATIONS & SYMBOLS

AC	Air Conditioning	LB	Pound
ANSI	American National Standards Institute	LH	Left Hand
AR	As Required	LS	Low Sulfur
ASME	American Society of Mechanical Engineers	MAX	Maximum
ASSY	Assembly	MM	Millimeter
AUS	Australia	N	Newton
AUX	Auxiliary	NA	Not Applicable
CE	European Conformity	NLA	No Longer Available
DIA	Diameter	NSS	Not Sold Separately
EURO	European	OD	Outside Diameter
FT	Foot	OZ	Ounce
GA	Gauge	P/N	Part Number
GR	Grade	QTY	Quantity
HD	Head	REF	Reference
HYD	Hydraulic	REQ	Required
ID	Inside Diameter	RH	Right Hand
IN	Inch	S/N	Serial Number
ISO	International Organization for Standards	SAE	Society of Automotive Engineers
ITSDF	Industrial Truck Standards Development Foundation	STD	Standard
KG	Kilogram	ULS	Ultra Low Sulfur
kW	Kilowatt	V	Volt

10. ILLUSTRATION REFERENCE LETTERS

When necessary, illustrations may contain reference letters that are intended to track information from one point to another in the illustration such as harnesses & hoses or any other information that has been separated in the illustration.

Note: Due to continuous product improvements, JLG Industries, Inc. reserves the right to make specification changes without prior notification. Contact JLG Industries, Inc. for updated information.



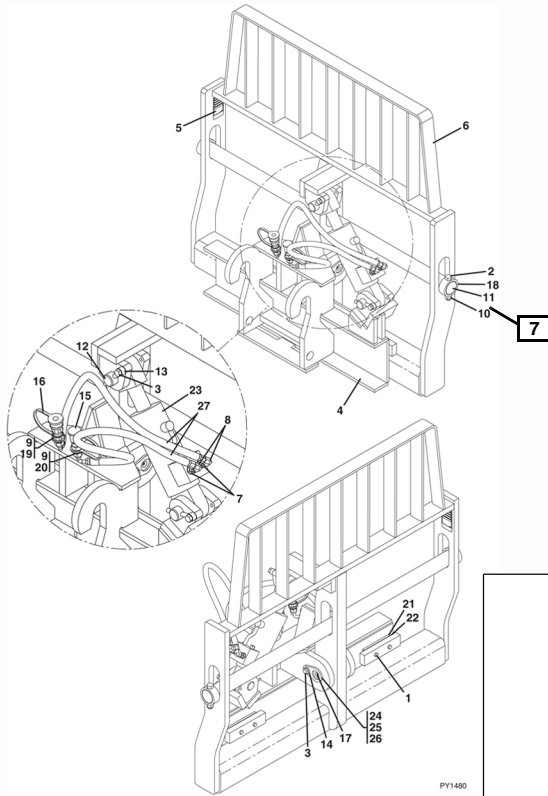
ATTACHMENTS

Model S/N 0160037799 & After
Model S/N 0160037798 & After
Model S/N 0160037793 & After

2

Figure 3-3 Side Tilt Carriage

1



3-10

Model Designation

1

Model S/N 0160037799 & After
Model S/N 0160037798 & After
Model S/N 0160037793 & After

ATTACHMENTS



Figure 3-3 Side Tilt Carriage

Item	Part Number	Qty.	Description	Rev.
	1170054	1	50 IN SIDE TILT CARRIAGE, (includes all items)	C
	1001101956	1	60 IN SIDE TILT CARRIAGE, (includes all items)	C
	1170057	1	72 IN SIDE TILT CARRIAGE, (includes all items)	C
1	0641612	4	HEX HD CAPSCREW, 3/8-16X1-1/2	
2	0642032	2	HEX HD CAPSCREW, 5/8-11X4	
3	0681810	3	HEX HD CAPSCREW, 1/2-13X1-1/4	
4	NSS	1	CARRIAGE BASE	
5	NSS	1	S/N PLATE	
6	NSS	1	CARRIAGE, SIDE TILT	
7	2110606	2	CONNECTOR	
8	2172106	2	CONNECTOR, 90 DEGREES	
9	2110808	2	CONNECTOR	
10	3300240	2	LOCK NUT, 5/8-11	
11	3423275	1	50 IN FORK PIN	
	3423242	1	60 IN FORK PIN	
	3423276	1	72 IN FORK PIN	
12	3423307	2	PIN	
13	3841203	2	KEEPER	
14	4891800	1	WASHER, 1/2	
15	8420053	1	DUST CAP	
16	8420055	1	DUST PLUG	
17	88671001	1	GREASE FITTING	
18	90200003	2	COLLAR	
19	91403413	1	CONNECTOR	
20	91403414	1	CONNECTOR	
21	1001090063	2	WEAR PAD	
22	1001090064	A/R	SHIM	
23		Ref	HYDRAULIC CYLINDER, (see Figure 9-12 for details)	
24	1001090140	1	BEARING	
25	1001099113	1	PIN	
26	1001099115	2	SLEEVE	
27	1001102378	2	HOSE ASSY, 3/8X39	

XXXXXX

Model Designation

3-11

This Page Intentionally Left Blank

TABLE OF CONTENTS

FIGURE NO.	TITLE	PAGE NO.
SECTION 1 –		
FRAME & ATTACHING PARTS		1-1
1-1	Frame & Attaching Parts	1-2
1-2	Covers	1-6
1-3	License Plate Holder Installation	1-12
1-4	Hitches	1-14
SECTION 2 –		
BOOM		2-1
2-1	Boom Assembly - Components	2-2
2-2	Boom Assembly - Pads & Shims	2-6
2-3	Quick Coupler	2-8
2-4	Universal Quick Coupler	2-10
SECTION 3 –		
ATTACHMENTS		3-1
3-1	Standard Carriage	3-2
3-2	Universal Standard Carriage	3-4
3-3	Side Tilt Carriage	3-6
3-4	Universal Side Tilt Carriage	3-8
3-5	Universal Side Shift Carriage	3-10
3-6	Forks	3-12
3-7	Grapple Bucket	3-14
3-8	Light Material Buckets	3-18
3-9	Fork Mounted Hook	3-20
3-10	Universal Hitch Attachment	3-24
SECTION 4 –		
ENGINE & ATTACHING PARTS		4-1
4-1	Engine Installation	4-2
4-2	Fuel Tank & Lines	4-6
4-3	Radiator Installation	4-8
4-4	Air Cleaner Installation	4-12
4-5	Exhaust Installation	4-14
4-6	Engine Heater Installation	4-18
4-7	Lubricity Doser Installation	4-20
SECTION 5 –		
DRIVE TRAIN		5-1
5-1	Drive Train Installation	5-2
5-2	Front Axle Assembly	5-4
5-3	Central Housing & Steering	5-6
5-4	Differential	5-8
5-5	Hub Reduction	5-12

TABLE OF CONTENTS

FIGURE NO.	TITLE	PAGE NO.
5-6	Brakes	5-14
5-7	Rear Axle Assembly	5-16
5-8	Central Housing & Steering	5-18
5-9	Differential	5-20
5-10	Hub Reduction	5-22
5-11	Fender Installation	5-24
5-12	Tires & Rims	5-26
SECTION 6 –		
	CAB	6-1
6-1	Cab Installation	6-2
6-2	Open Cab	6-6
6-3	Enclosed Cab Installation	6-8
6-4	Cab Interior	6-12
6-5	Overhead Console Installation	6-14
6-6	Suspension Seat	6-16
6-7	Wiper Installation	6-18
6-8	Heater & AC	6-20
6-9	AC Condenser Installation	6-24
6-10	AC System Installation	6-26
SECTION 7 –		
	CONTROLS	7-1
7-1	Brake	7-2
7-2	Accelerator	7-4
7-3	Steering Column	7-6
7-4	Boom Joystick	7-8
SECTION 8 –		
	HYDRAULIC CIRCUITS	8-1
8-1	Supply Circuit	8-2
8-2	Dump Circuit	8-6
8-3	Steer Select	8-10
8-4	Service/Park Brake	8-12
8-5	Boom Joystick	8-14
8-6	Lift Cylinder	8-18
8-7	Extend/Retract Cylinder	8-22
8-8	Tilt & Compensating	8-24
8-9	Auxiliary Hydraulics	8-26
8-10	Rear Auxiliary Hydraulics	8-28
8-11	Auxiliary Hydraulics Pressure Relief	8-30

TABLE OF CONTENTS

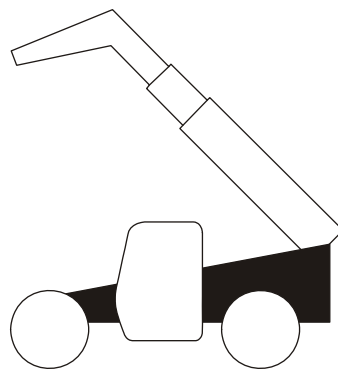
FIGURE NO.	TITLE	PAGE NO.
SECTION 9 –		
HYDRAULIC COMPONENTS		9-1
9-1	Lift Cylinder	9-2
9-2	Extend/Retract Cylinder	9-6
9-3	Tilt Cylinder	9-8
9-4	Compensating Cylinder	9-10
9-5	Fork Locking Cylinder	9-12
9-6	Side Tilt Carriage Cylinder & Grapple Bucket Cylinder	9-14
9-7	Universal Side Shift Cylinder	9-16
9-8	Main Control Valve	9-18
9-9	Front Drive Motor	9-20
9-10	Hydrostatic Drive Pump	9-22
9-11	Gear Pump	9-24
9-12	Divertor Valve	9-26
9-13	Steering Select Valve	9-28
9-14	Pilot Select Valve	9-30
9-15	Brake Valves	9-32
SECTION 10 –		
ELECTRICAL		10-1
10-1	Engine Compartment Electrical Installation	10-2
10-2	Boom and Frame Electrical Installation	10-4
10-3	Cab Electrical Installation	10-8
10-4	Cab Switches	10-10
10-5	Work Lights	10-12
10-6	Drive Lights	10-16
10-7	Engine Harness	10-18
10-8	Frame Harness	10-22
10-9	Frame Option Harness	10-28
10-10	Cab Harness	10-34
10-11	Cab Roof Harness	10-40
10-12	Roof Worklight Harness	10-42
10-13	Boom Worklight Harness	10-44
10-14	Beacon Worklight Harness	10-46
10-15	Boom Aux Harness	10-48
10-16	LSI Boom Sensor Harness	10-50
10-17	Ignition Switch Jumper Harness	10-52
10-18	Mode Select Harness	10-54
10-19	Heater Jumper Harness	10-56
SECTION 11 –		
DECALS		11-1
11-1	Cab & Frame Decals	11-2
11-2	Boom Decals	11-8

TABLE OF CONTENTS

FIGURE NO.	TITLE	PAGE NO.
SECTION 12 –		
RECOMMENDED SPARE PARTS		12-1
SECTION 13 – PART NUMBER INDEX		13-1

SECTION 1

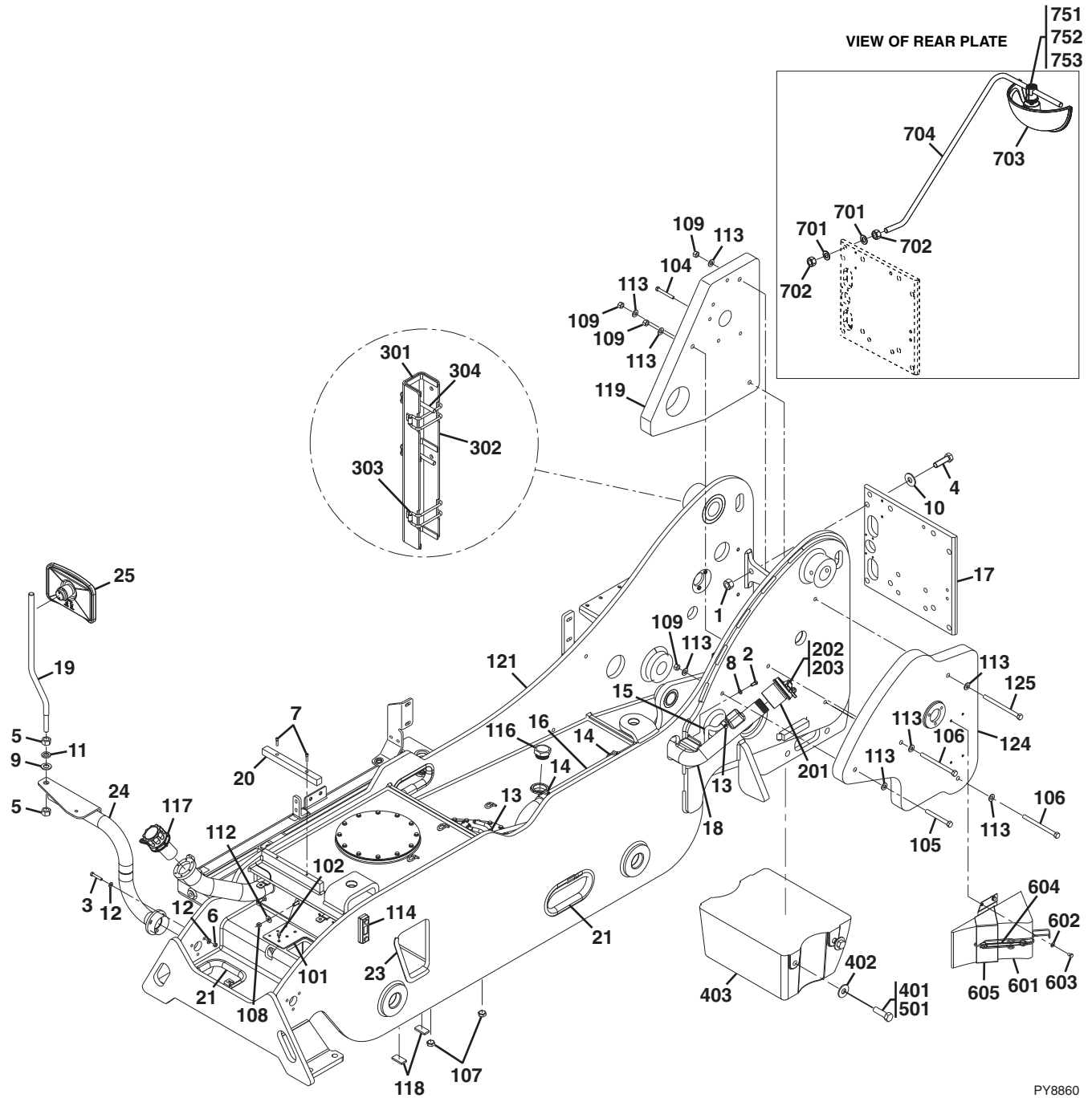
FRAME & ATTACHING PARTS





FRAME & ATTACHING PARTS

Figure 1-1 Frame & Attaching Parts



PY8860



Figure 1-1 Frame & Attaching Parts

Item	Part Number	Qty.	Description	Rev.
	1001137271	Ref	FRAME INSTALLATION, (not available to order, see items 1 thru 25 for service)	B
1	1001151133	2	HEAVY HEX NUT, 3/4-10	
2	0641506	2	HEX HD CAPSCREW, 5/16-18X3/4, GR5	
3	0641514	3	HEX HD CAPSCREW, 5/16-18X1-3/4, GR5	
4	1001151086	4	HEX HD CAPSCREW, 3/4-10X2-1/2, GR8	
5	3272201	2	HEX NUT, 3/4-10, GR8, (torque to 135-105 lb-ft/183-142 Nm)	
6	3311505	3	LOCKNUT, 5/16-18	
7	3931416	2	SOCKET HD CAPSCREW, 1/4-20X1	
8	4711500	2	WASHER, 5/16	
9	4712200	1	WASHER, 3/4	
10	1001151132	4	WASHER, 3/4	
11	4762200	1	LOCKWASHER, 3/4	
12	4891500	6	WASHER, 5/16	
13	83483497	2	GEAR CLAMP	
14	86883327	2	HOSE CLAMP	
15	1001148483	1	VENT HOSE	
16	1001080086	1	FILL HOSE	
17	1001080171	1	REAR HITCH MOUNT PLATE	
18	1001080573	1	FUEL NOZZLE TUBE	
19	1001144474	1	MIRROR BRACKET	
	1001158104	1	OFFSET MIRROR BRACKET, (for homologation machines)	
20	1001081185	1	BOOM STOP PAD	
21	1001142680	103 in	SPLIT POLY CONDUIT	
23	1001081364	2	RUBBER GROMMET	
24	1001133822	1	HEADLIGHT BRACKET	
25	1001148177	1	RECTANGULAR MIRROR	
101	1001157307	1	ELECTRIC COMPONENTS MOUNT	
102	0641403	2	HEX HD CAPSCREW, 1/4-20X3/8, GR5	
104	0641624	1	HEX HD CAPSCREW, 3/8-16X3, GR5	
105	0641836	1	HEX HD CAPSCREW, 1/2-13X4-1/2, GR5	
106	0641852	2	HEX HD CAPSCREW, 1/2-13X6-1/2, GR5	
107	2220239	2	ADAPTER, PLUG	
108	3271601	1	HEX NUT, 3/8-16	
109	3271801	4	HEX NUT, 1/2-13	
112	4751600	1	WASHER, 3/8	
113	90027471	8	WASHER, 1/2	
114	91563136	1	OIL LEVEL INDICATOR, (torque to mounting bolts to 6 lb-ft/8 Nm)	
116	1001080944	1	MECHANICAL ADAPTER, PLUG	
117	1001145882	1	LOCKABLE HYDRAULIC FILLER CAP	
118	1001081363	2	MAGNET	
119	1001130291	1	COUNTERWEIGHT PLATE	
121	NSS	1	FRAME WELDMENT	
124	1001130289K	1	WEIGHT ASSY	
125	0641856	1	HEX HD CAPSCREW, 1/2-13X7	
	1001080571	1	DIESEL FUEL CAP INSTALLATION, (includes items 201 thru 203)	B
201	1001001422	1	FILLER NECK TANK ADAPTER	
202	1001080707	1	DIESEL FUEL LOCKING CAP	
203	0100093	AR	LOCTITE® 30512™	



FRAME & ATTACHING PARTS

Figure 1-1 Frame & Attaching Parts (Continued)

Item	Part Number	Qty.	Description	Rev.
	0275778	1	LIFT CYLINDER LOCK INSTALLATION, (includes items 301 thru 305)	C
301	909304	AR	RUBBER PROFILE, 18X5mm	
302	1271599	1	LIFT CYLINDER LOCK WELDMENT	
303	1784861	2	O-RING	
304	1001099887	2	HANDLE SCREW, 12X103mm	
305		Ref	CYLINDER LOCK WARNING DECAL, (not shown), (see Figure 11-1 for details)	
	1001081106	Ref	COUNTERWEIGHT INSTALLATION, (ANSI) , (not available to order, see items 401 thru 403 for service)	B
	1001081107	Ref	COUNTERWEIGHT INSTALLATION, (CE) , (not available to order, see items 401 thru 403 for service)	B
	1001137138	Ref	COUNTERWEIGHT INSTALLATION, (AUS) , (not available to order, see items 401 thru 501 for service)	A
401	0682220	4	HEX HD CAPSCREW, 3/4-10X2-1/2, GR8	
402	4752200	4	WASHER, 3/4	
403	1001080861	1	COUNTERWEIGHT, 460 LB/209 KG, (ANSI)	
	1001081105	1	COUNTERWEIGHT, 129 KG/284 LB, (CE)	
	1001137099	1	COUNTERWEIGHT, 32.6 KG/720 LB, (AUS)	
501	0100071	AR	LOCTITE® 262™, (AUS)	
	0275779	Ref	WHEEL CHOCK INSTALLATION, (not available to order, see items 601 thru 605 for service)	C
601	806253	1	WEDGE ASSY	
602	4811900	4	WASHER, 8mm	
603	0760806	4	HEX HD CAPSCREW, 8X12mm	
604	1060628	1	TIE DOWN CABLE	
605	806264	1	WEDGE HOLDER	
	1001104784	Ref	CONVEX MIRROR INSTALLATION, (not available to order, see items 701 thru 704 for service)	A
701	4712200	2	WASHER, 3/4	
702	88501012	2	HEX NUT, 3/4-10	
703	1001008436	1	MIRROR ASSY, (includes items 751 thru 753)	B
704	1001080241	1	REAR MOUNT MIRROR BAR	
751	1001008475	2	LOCKWASHER, #12	
752	1001009062	2	WASHER	
753	1001010838	2	HEX HD BOLT	

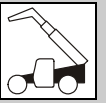


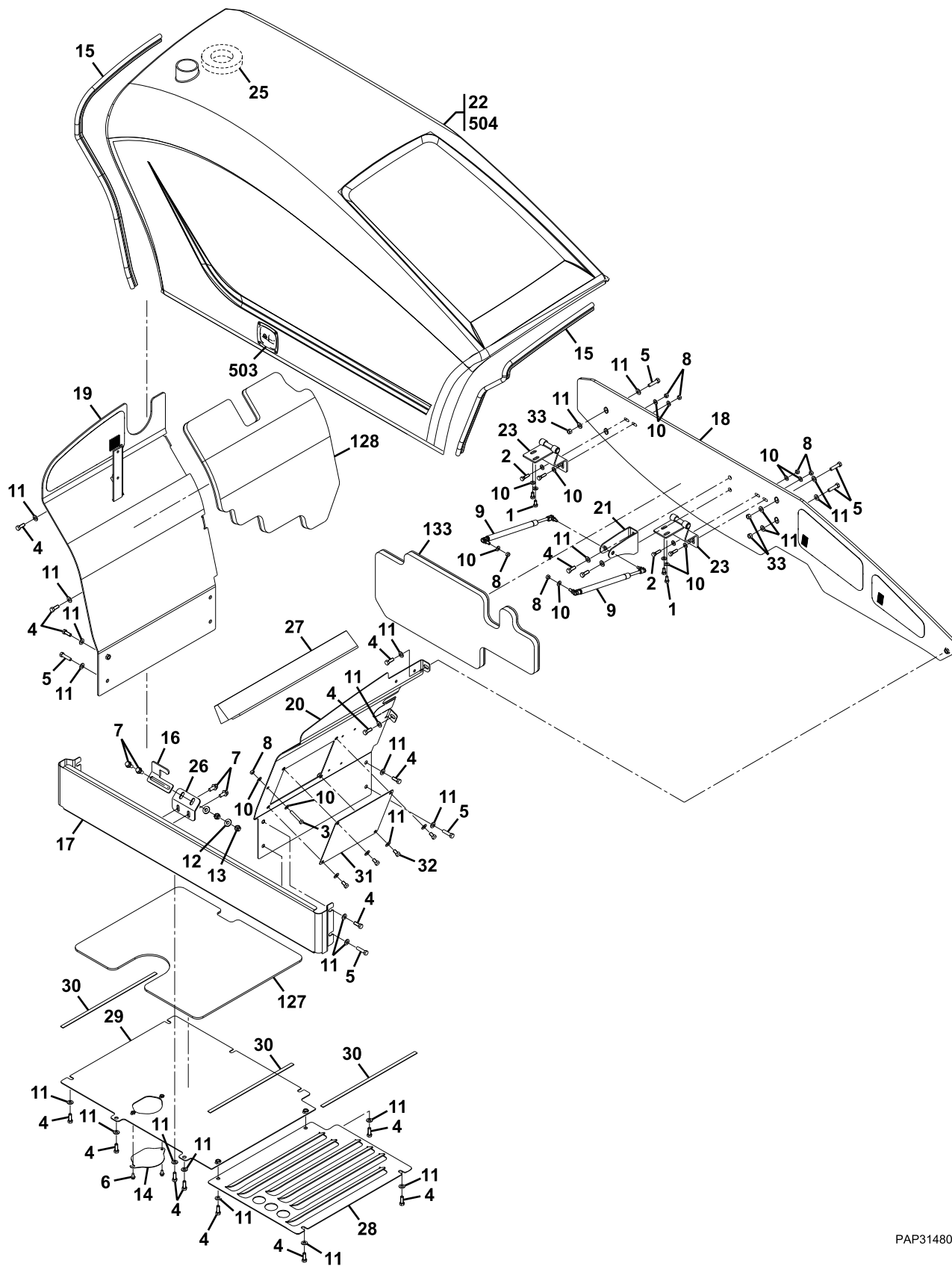
Figure 1-1 Frame & Attaching Parts (Continued)

Item	Part Number	Qty.	Description	Rev.



FRAME & ATTACHING PARTS

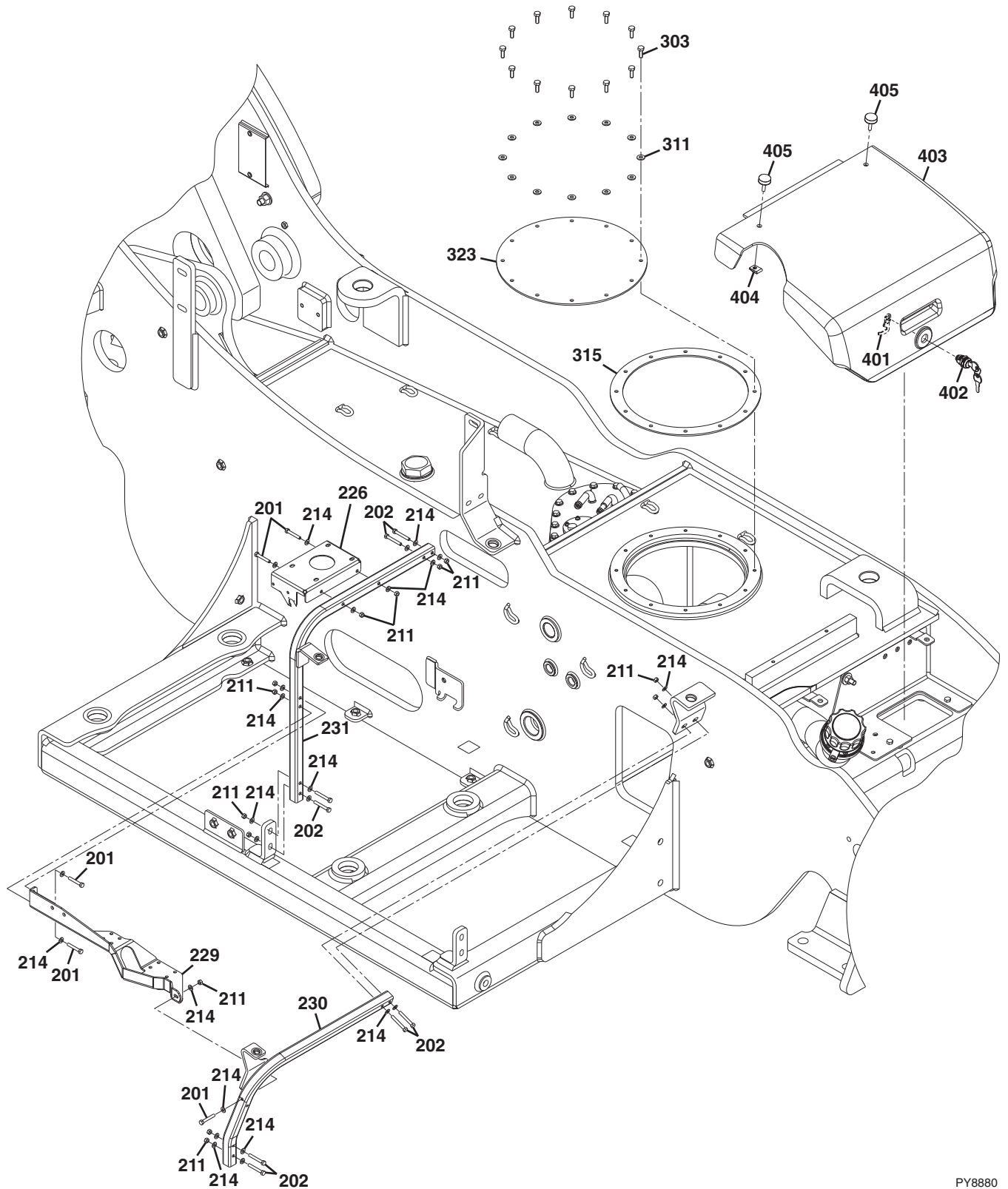
Figure 1-2 Covers



PAP31480



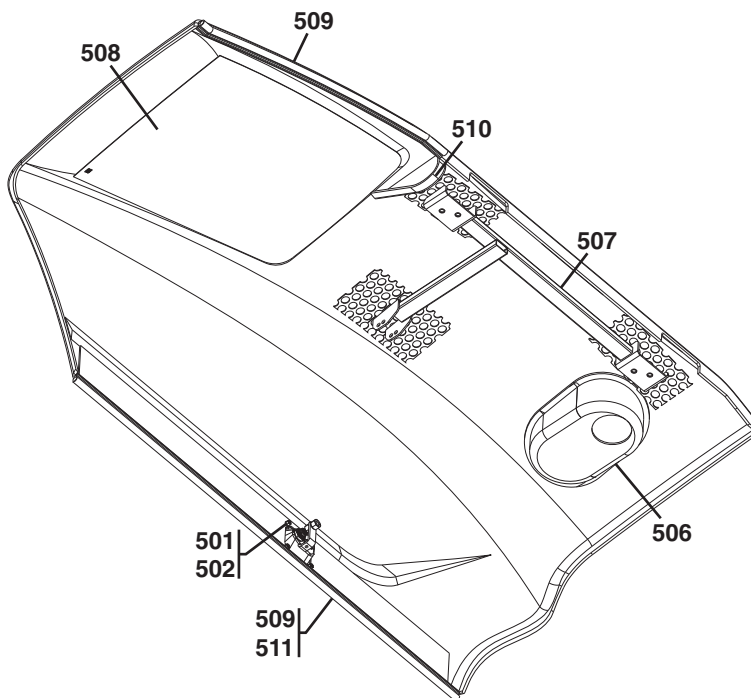
Figure 1-2 Covers (Continued)



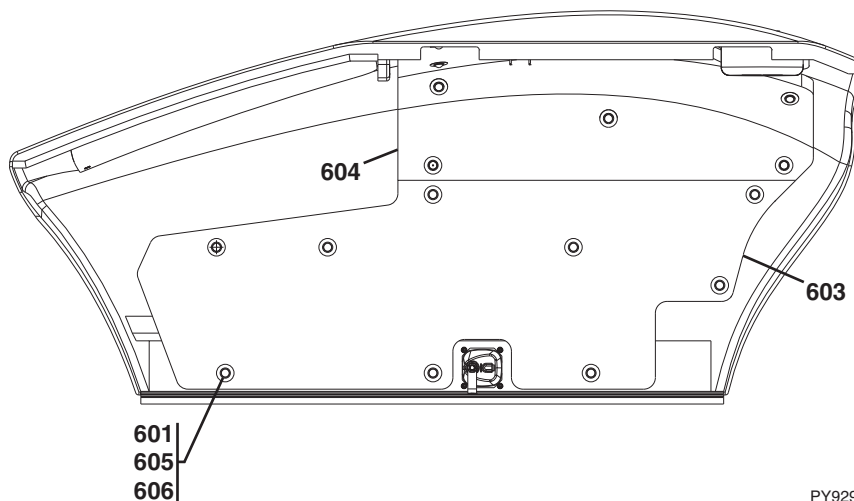


FRAME & ATTACHING PARTS

Figure 1-2 Covers (Continued)



2505H & 25.5



PY9290