



Illustrated Parts Manual

Models G5-19A & G6-23A

31200194

*Revised
April 4, 2014*



EFFECTIVITY PAGE

March 10, 2006 - A - Original Issue Of Manual

February 23, 2007 - B - Revised Manual

July 6, 2007 - C - Revised Manual

May 15, 2008 - D - Revised Manual

May 29, 2009 - E - Revised Manual

April 3, 2014 - F - Revised Manual

EFFECTIVITY PAGE

TABLE OF CONTENTS

FIGURE NO.	TITLE	PAGE NO.
SECTION 1 –		
FRAME & ATTACHING PARTS		1-1
1-1	Frame Shrouding & Trim	1-2
1-2	Frame Shrouding & Trim, Fender Installation	1-6
1-3	Axle Installation	1-8
SECTION 2 –		
BOOM		2-1
2-1	First Boom Section	2-2
2-2	Second Boom Section	2-6
2-3	Quick Switch Assembly	2-10
2-4	Hydraulic Quick Switch Assembly	2-12
SECTION 3 –		
ATTACHMENTS		3-1
3-1	Carriage Assembly	3-2
3-2	Buckets	3-4
3-3	Four In One Bucket	3-6
3-4	Fork Mounted Hook	3-8
3-5	Truss Boom	3-10
3-6	Manure Bucket	3-12
3-7	Fork	3-14
3-8	Side Shift Carriage	3-16
3-9	Side Tilt Carriage	3-18
3-10	Fork Position/Side Shift Carriage	3-20
3-11	Fork Mounted Platform	3-24
SECTION 4 –		
ENGINE & ATTACHING PARTS		4-1
4-1	Engine Assembly	4-2
4-2	Deutz Engine	4-4
4-3	Fuel Tank & Lines	4-6
4-4	Radiator Assembly	4-8
4-5	Air Cleaner Installation	4-10
4-6	Exhaust Installation	4-12
SECTION 5 –		
DRIVE TRAIN		5-1
5-1	Front Axle	5-2
5-2	Front Axle - Housing	5-4
5-3	Front Axle - Housing and Steering Cylinder	5-8
5-4	Front Axle - Bevel Gear Set	5-12
5-5	Front Axle - Differential	5-14
5-6	Front Axle - Double U-Joint	5-16

TABLE OF CONTENTS

FIGURE NO.	TITLE	PAGE NO.
5-7	Front Axle - Brakes	5-20
5-8	Front Axle - Wheel Hub and Final Reduction	5-24
5-9	Front Axle - Transmission Housing	5-28
5-10	Front Axle - Lower and Upper Shaft	5-30
5-11	Rear Axle	5-34
5-12	Rear Axle - Housing	5-36
5-13	Rear Axle - Swivel Housing and Steering Cylinder	5-38
5-14	Rear Axle - Bevel Gear Set	5-42
5-15	Rear Axle - Differential	5-44
5-16	Rear Axle - Double U-Joint	5-48
5-17	Rear Axle - Wheel Hub and Final Reduction	5-52
5-18	Drive Shaft	5-56
5-19	Tires & Rims	5-58
SECTION 6 –		
	CAB	6-1
6-1	Cab Assembly	6-2
6-2	Cab Interior Assembly	6-4
6-3	Seat Assembly	6-6
6-4	Cab Windows	6-8
6-5	Cab Door Assembly	6-10
6-6	Wiper Assembly	6-12
6-7	Air Circulation Installation	6-14
6-8	Tool Box Assembly (Optional)	6-18
6-9	Fire Extinguisher Installation (Optional)	6-20
SECTION 7 –		
	CONTROLS	7-1
7-1	Boom Joystick	7-2
7-2	Steering Column & Attaching Parts	7-4
7-3	Accelerator Pedal Assembly	7-6
7-4	Brake Pedal Assembly	7-8
SECTION 8 –		
	HYDRAULIC CIRCUITS	8-1
8-1	Supply Circuit	8-2
8-2	Dump Circuit	8-4
8-3	Front Drive Circuit	8-8
8-4	Steer Select	8-12
8-5	Service/Park Brake	8-14
8-6	Lift Cylinder	8-16
8-7	Extend/Retract Cylinder	8-18
8-8	Tilt & Tilt Compensating Cylinder	8-22
8-9	Auxiliary Function	8-26

TABLE OF CONTENTS

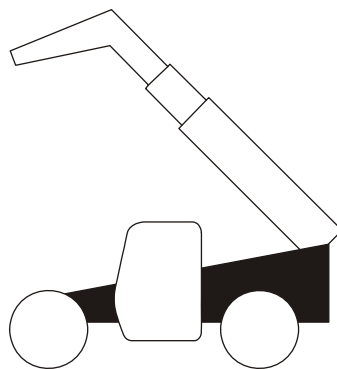
FIGURE NO.	TITLE	PAGE NO.
8-10	Rear Hydraulic Outlet	8-28
SECTION 9 –		
HYDRAULIC COMPONENTS		9-1
9-1	Lift Cylinder	9-2
9-2	Extend/Retract Cylinder	9-6
9-3	Tilt Cylinder	9-10
9-4	Compensating Cylinder	9-14
9-5	Fork Locking Cylinder	9-18
9-6	Main Control Valve	9-20
9-7	Front Drive Motor	9-24
9-8	Hydrostatic Transmission Pump	9-28
9-9	Hydraulic Tank Assembly	9-30
9-10	Implement Pump	9-32
9-11	Auxiliary Diverter Valve	9-34
SECTION 10 –		
ELECTRICAL		10-1
10-1	Electrical Installation	10-2
10-2	Engine Harness	10-6
10-3	Rear Chassis Harness	10-10
10-4	Front Chassis Harness	10-14
10-5	PWM Valve Controller Assembly	10-16
10-6	Roof Harness	10-18
10-7	Main Harness	10-20
10-8	Ground Harness	10-24
10-9	Bucket Shake Switch (Optional)	10-26
10-10	Oil Temperature Gauge Installation (Optional)	10-28
SECTION 11 –		
DECALS		11-1
11-1	Frame & Boom Decals	11-2
11-2	Cab Decals	11-6
11-3	Machine Decals, G5-19A	11-8
11-4	Machine Decals, G6-23A	11-10
SECTION 12 –		
OPTIONS		12-1
12-1	Cab Worklight Installations	12-2
12-2	Boom Worklight Installation	12-4
12-3	Rotating Beacon Installation	12-6
12-4	Air Conditioner Installation	12-8
12-5	Draw Bar Coupling Installation	12-12
12-6	Dual Boom Aux Hydraulic, Manual	12-14

TABLE OF CONTENTS

FIGURE NO.	TITLE	PAGE NO.
12-7	Dual Boom Aux Hydraulic, Electrical	12-16
12-8	Option Harness	12-18
12-9	Upper Cab Electrical Installation	12-20
12-10	Pintle Hitch Installation	12-24
12-11	Dump Valve Installation	12-26
12-12	Boom Auxiliary Electric	12-28
SECTION 13 –		
	RECOMMENDED SPARE PARTS	13-1
SECTION 14 – PART NUMBER INDEX		
		14-1

SECTION 1

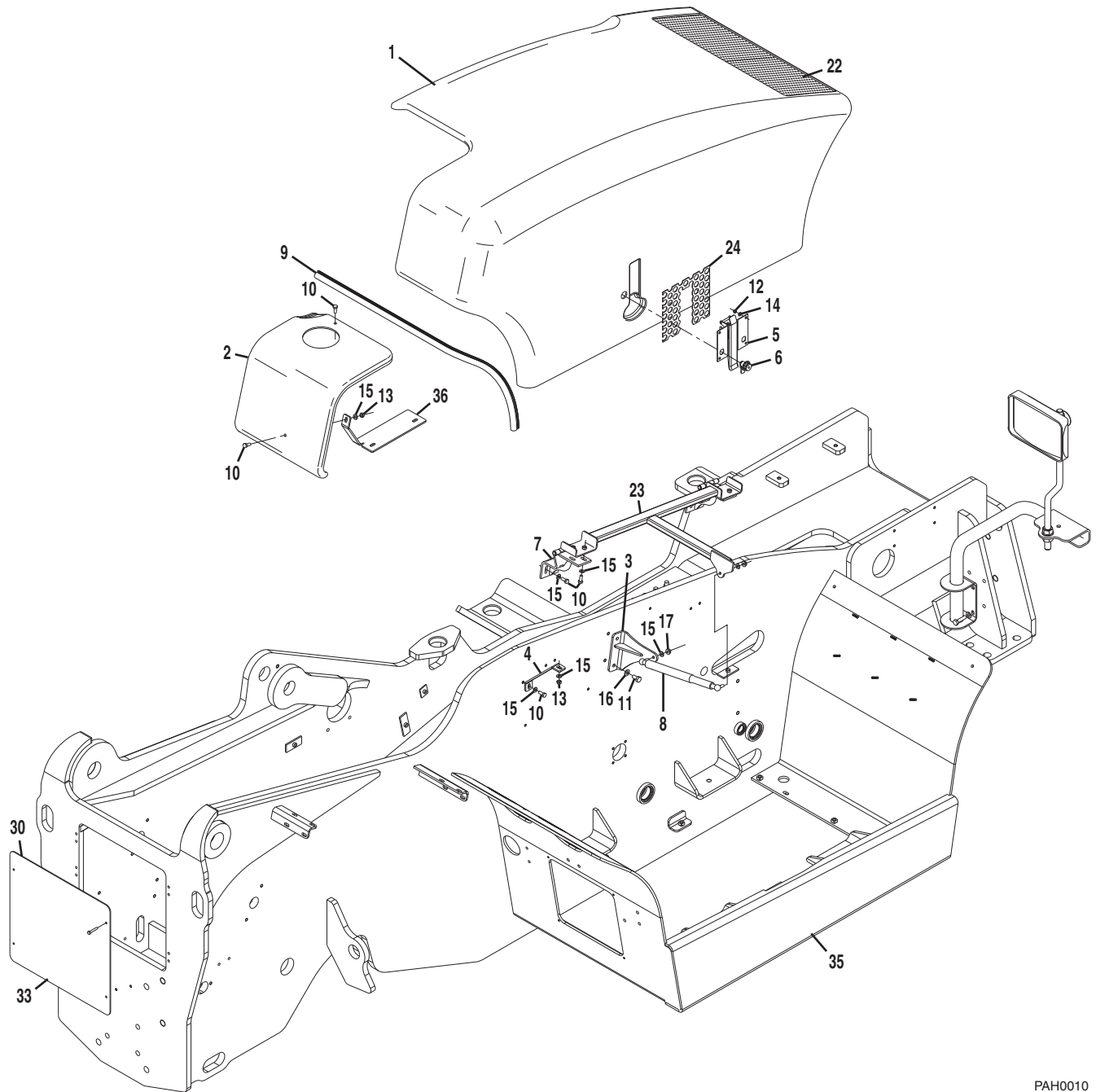
FRAME & ATTACHING PARTS





FRAME & ATTACHING PARTS

Figure 1-1 Frame Shrouding & Trim



PAH0010

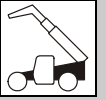
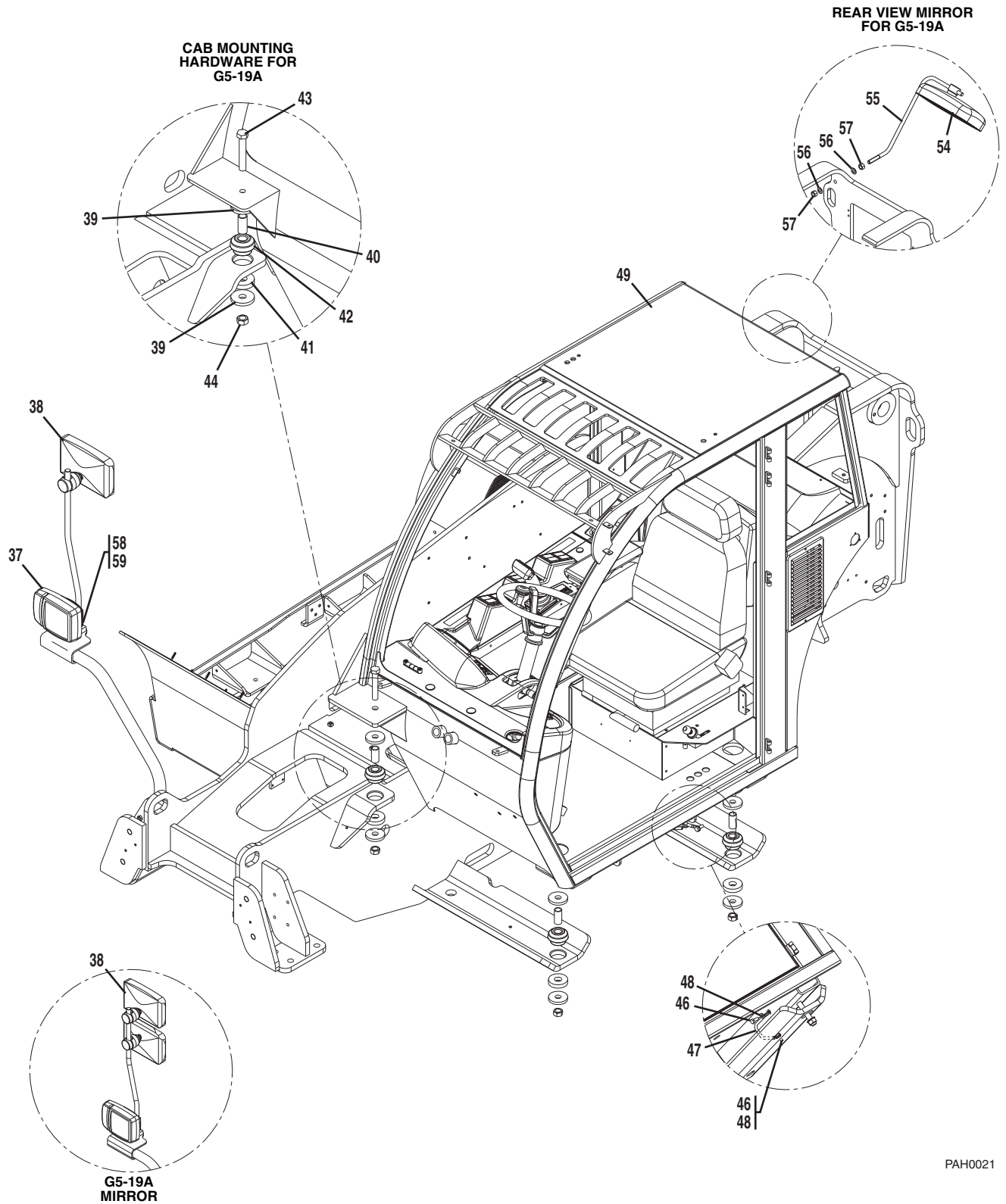


Figure 1-1 Frame Shrouding & Trim (Continued)



PAH0021



FRAME & ATTACHING PARTS

Figure 1-1 Frame Shrouding & Trim

Item	Part Number	Qty.	Description	Rev.
	0275028	1	ENGINE HOOD INSTALLATION, (includes items 1 thru 17)	A
1	1671260	1	HOOD ASSY, (includes items 22 thru 24)	A
2	1671177	1	ENGINE PANEL HOOD	
3	0903274	1	BRACKET	
4	3575643	1	SUPPORT PLATE	
5	8000382	1	HOOD LATCH	
6	8000801	1	HOOD LOCK	
7	4806433	2	HINGE	
8	4160213	1	GAS SPRING	
9	2014226	6.4 M	RUBBER SEAL	
10	0760810	11	HEX HD CAPSCREW, 8-1.25X20mm, GR 8.8	
11	0761010	2	HEX HD CAPSCREW, 10-1.50X20mm, GR 8.8	
12	3290605	3	HEX LOCK NUT, M6X1	
13	3290805	2	HEX LOCK NUT, M8X1.25	
14	4811700	3	FLAT WASHER, 6mm	
15	4811900	11	FLAT WASHER, 8mm	
16	4812000	2	FLAT WASHER, 10mm	
17	5220800	1	RIPP NUT, 8mm	
22	2520136	1	GRILL	
23	4340868	1	HOOD SUPPORT	
24	4806444	1	PLATE	
30	0275255	1	REAR COVER PANEL, (includes item 33)	A
33	3380687	1	REAR PANEL	
35	2360729	1	FRAME, (G5-19A), (Before S/N 1160002168)	
	2360778	1	FRAME, (G5-19A), (S/N 1160002168 & after)	
	2360663	1	FRAME, (G6-23A)	
36	3575641	1	PANEL SUPPORT	
37		Ref	HEADLIGHT ASSY, (see Figure 10-1 for details)	
38	3140007	2	MIRROR, (G5-19A)	
	3140007	1	MIRROR, (G6-23A)	
39	1781813	8	CAB MOUNT	
40	4806626	4	BUSHING	
41	8000565	4	WASHER	
42	8000567	4	RUBBER MOUNT	
43	0712029	4	HEX HD CAPSCREW, GR 10.9, (torque to 111 ft-lb [150 Nm])	
44	3292001	4	HEX NUT, M20X2.5	
46	0761012	2	HEX HD CAPSCREW, 10-1.50X25mm	
47	8003392	1	CABLE SET, GROUND CONNECTION	
48	4812000	2	FLAT WASHER, 10mm	
49		Ref	CAB, (see Figure 6-1 for details)	
54	80363195	1	MIRROR	
55	3841634	1	MIRROR ATTACH BAR	
56	3291601	2	HEX NUT, M16X2	
57	4812300	2	FLAT WASHER, 16mm	
58	3292001	2	HEX NUT, M20X2.5	
59	4812500	2	WASHER, 20mm	
60	0100011	AR	LOCTITE, #242	

FRAME & ATTACHING PARTS

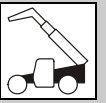


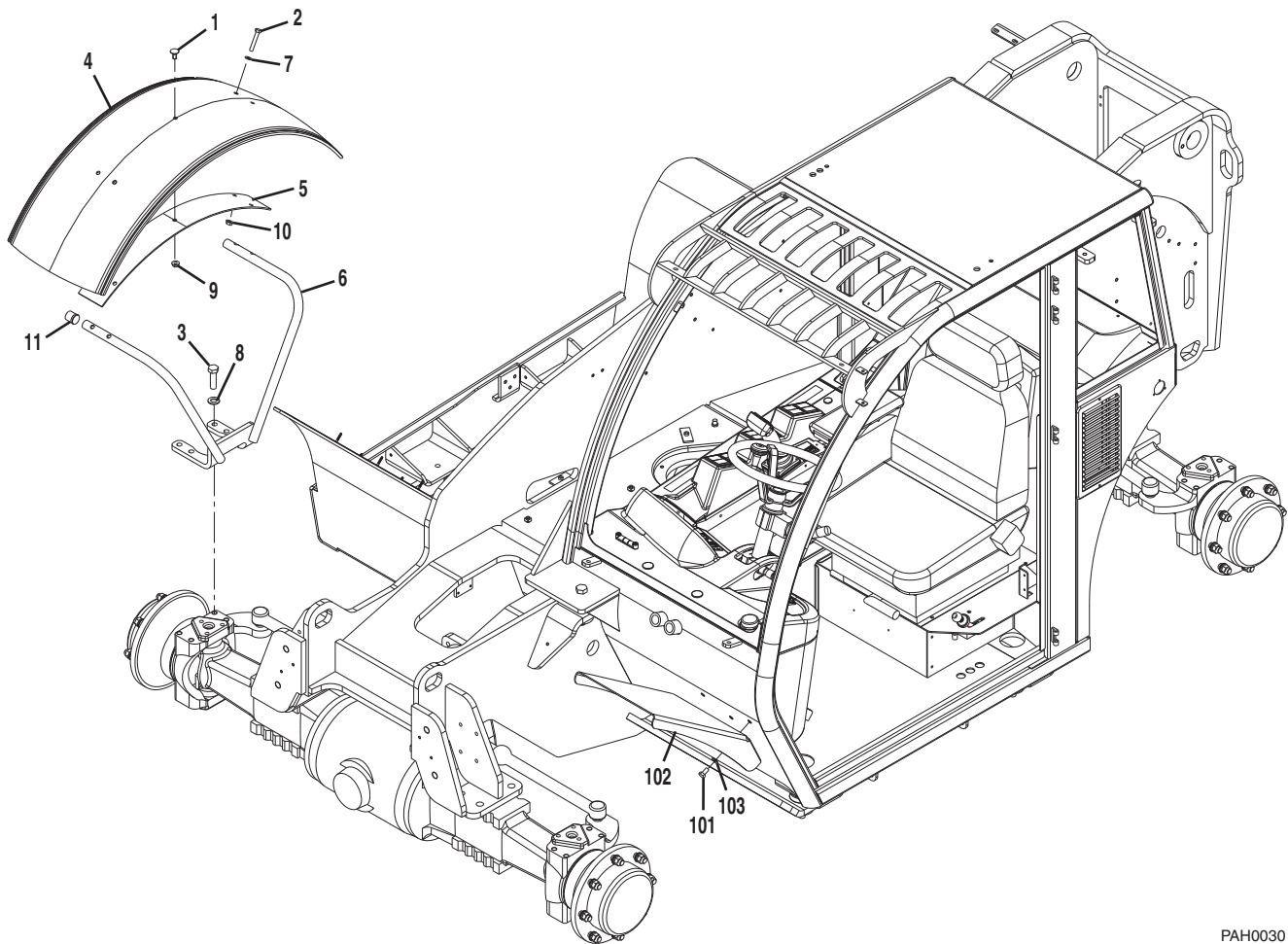
Figure 1-1 Frame Shrouding & Trim (Continued)

Item	Part Number	Qty.	Description	Rev.



FRAME & ATTACHING PARTS

Figure 1-2 Frame Shrouding & Trim, Fender Installation



PAH0030

FRAME & ATTACHING PARTS



Figure 1-2 Frame Shrouding & Trim, Fender Installation

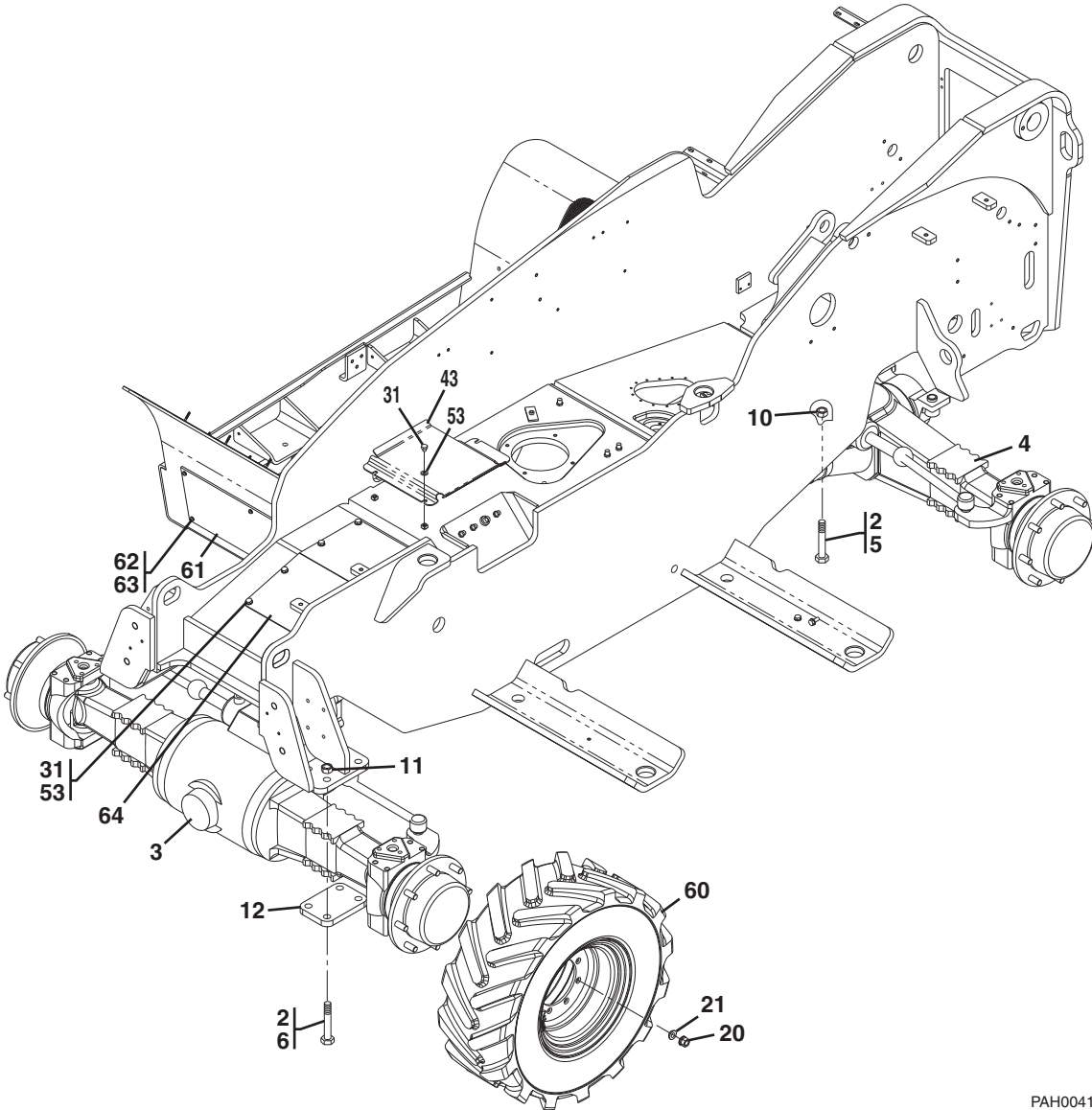
Item	Part Number	Qty.	Description	Rev.
	0274812	1	FENDER INSTALLATION, (G5-19A) , (optional), (includes items 1 thru 11)	B
	0273812	1	FENDER INSTALLATION, (G6-23A) , (optional), (includes items 1 thru 11)	F
1	328027	4	BOLT, MUSHROOM HEAD 8-1.25X20mm	
2	0701018	16	HEX HD CAPSCREW, 10-1.50X50mm, GR 8.8	
3	0761617	16	HEX HD CAPSCREW, 16X45, GR 8.8	
4	1001096569	4	FENDER, (G5-19A)	
	1001096345	4	FENDER, (G6-23A)	
5	1001098263	4	SUPPORT PLATE, (G5-19A)	
	3575386	4	SUPPORT PLATE, (G6-23A)	
6	4340882	4	FENDER SUPPORT, (G5-19A)	
	4340883	4	FENDER SUPPORT, (G6-23A)	
7	4812000	16	WASHER, 10mm	
8	4812300	16	WASHER, 16mm	
9	5220800	8	RIPP NUT, (G5-19A)	
	5220800	4	RIPP NUT, (G6-23A)	
10	5221000	16	RIPP NUT	
11	8006580	8	PLUG	
	0275259	1	CAB FENDER INSTALLATION, (includes items 101 thru 103)	A
101	0761010	3	HEX HD CAPSCREW, 10-1.50X20mm	
102	2090061	1	CAB FENDER	
103	4812000	3	FLAT WASHER, 10mm	



FRAME & ATTACHING PARTS

Figure 1-3 Axle Installation

G5-19A



PAH0041



Figure 1-3 Axle Installation

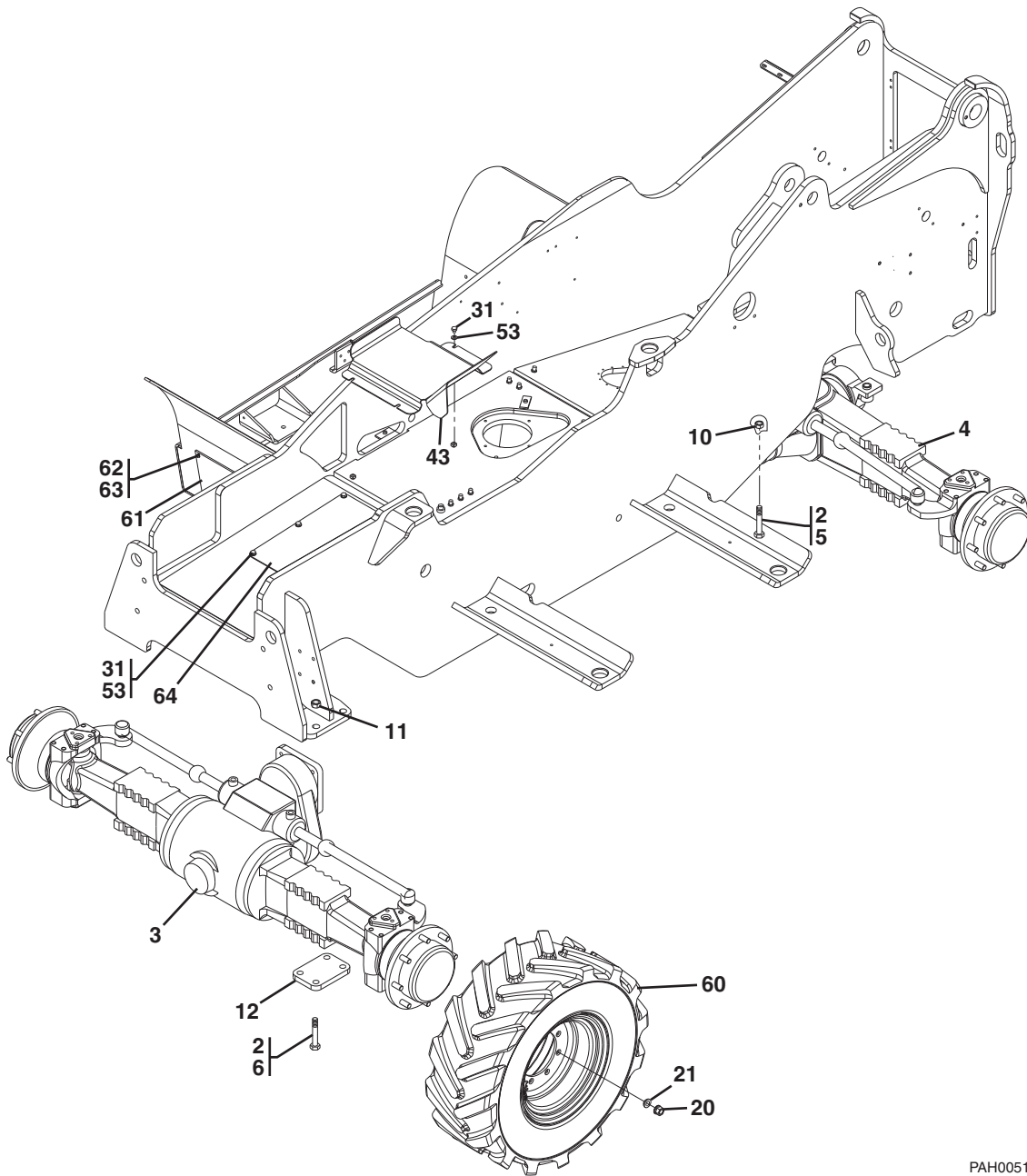
Item	Part Number	Qty.	Description	Rev.
2	0100019	AR	LOCTITE, #271	
3		Ref	FRONT AXLE ASSY, (see Figure 5-1 for details)	
4		Ref	REAR AXLE ASSY, (see Figure 5-11 for details)	
5	0630599	6	HEX HD CAPSCREW, 20-1.50X140mm	
6	0712040	8	HEX HD CAPSCREW, 20X230, GR10.9	
10	3300478	6	HEX NUT, M20X1.5	
11	3332001	8	HEX NUT, M20X2.5	
12	3574829	2	AXLE PLATE	
20	7028416	32	LUG NUT, (torque to 221 ft-lb [300 Nm])	
21	7028415	32	SPRING WASHER	
31	0761005	11	HEX HD CAPSCREW, 10X10	
43	1671334	1	HOSE COVER	
53	4812000	11	FLAT WASHER, 10mm	
60		Ref	TIRE & RIM ASSY, (see Figure 5-19 for details)	
61	1001097241	1	COVER	
62	4191707	6	SCREW, M16X6mm	
63	4811700	6	FLAT WASHER, 6mm	
64	1001099383	1	MOTOR ACCESS COVER	



FRAME & ATTACHING PARTS

Figure 1-3 Axle Installation

G6-23A



PAH0051

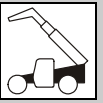


Figure 1-3 Axle Installation

Item	Part Number	Qty.	Description	Rev.
2	0100019	AR	LOCTITE, #271	
3		Ref	FRONT AXLE ASSY, (see Figure 5-1 for details)	
4		Ref	REAR AXLE ASSY, (see Figure 5-11 for details)	
5	0630599	6	HEX HD CAPSCREW, 20-1.50X140mm	
6	0712445	8	HEX HD CAPSCREW, 20X230, GR10.9	
10	3300478	6	HEX NUT, M20X1.5	
11	3332401	8	HEX NUT, M20X2.5	
12	3575706	2	AXLE PLATE	
20	7028416	32	LUG NUT, (torque to 221 ft-lb [300 Nm])	
21	7028415	32	SPRING WASHER	
31	0761005	9	HEX HD CAPSCREW, 10X10	
43	1671206	1	HOSE COVER	
53	4812000	9	FLAT WASHER, 10mm	
60		Ref	TIRE & RIM ASSY, (see Figure 5-19 for details)	
61	1001097241	1	COVER	
62	4191707	6	SCREW, M16X6mm	
63	4811700	6	FLAT WASHER, 6mm	
64	1001099383	1	MOTOR ACCESS COVER	



FRAME & ATTACHING PARTS

This Page Intentionally Left Blank