



Illustrated Parts Manual

Models

G10-55A

G12-55A

S/N 0160045636 & After including
0160045082, 0160045094,
0160045209, 0160045295,
0160045296 & 0160045449

31200728

Revised
March 4, 2014



EFFECTIVITY PAGE

May 1, 2012 - A - Original Issue of Manual

January 4, 2013 - B - Revised Manual

January 29, 2013 - C - Revised Manual

April 3, 2013 - D - Revised Manual

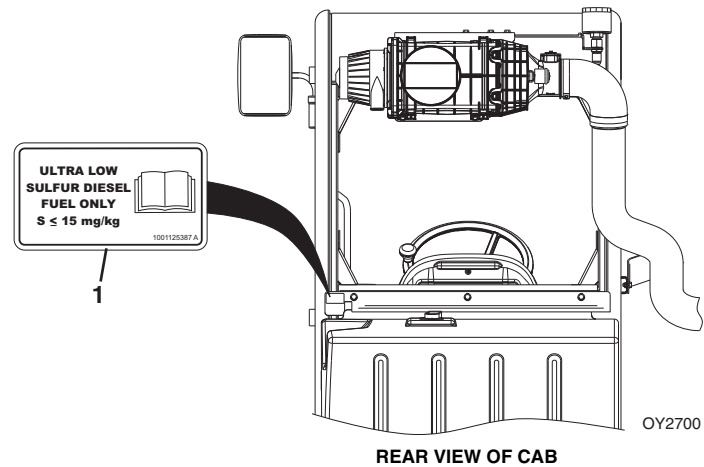
August 2, 2013 - E - Revised Manual

January 10, 2014 - F - Revised Manual

March 4, 2014 - G - Revised Manual

EFFECTIVITY PAGE

Machine Configuration



Two configurations of each machine are included in this manual. Determine if machine is equipped with Ultra Low Sulfur Fuel Decal (1).

If equipped with the Ultra Low Sulfur decal, all specific references to this machine configuration will be referred to as Ultra Low Sulfur (**ULS**) from this point forward.

If not equipped with the Ultra Low Sulfur decal, all specific references to this machine configuration will be referred to as Low Sulfur (**LS**) from this point forward.

General Information

1. MACHINE IDENTIFICATION

Machines are identified by model & in some cases a combination of model, serial number (S/N) or regional standard (CE, AUS, ANSI). Components may also be identified by S/N or manufacturer. Common components that may be identified by these characteristics are attachments, engine, transmission & hydraulic components.

2. PARTS MANUAL ORGANIZATION

Product information in this manual is organized under section titles. Frame & Attaching Parts, Drive Train & Electrical are a few examples. Each section is organized by Figure & page number. The information within the Figure is then organized by item number, part number, description & corresponding illustration(s).

3. TABLE OF CONTENTS

A table of contents (TOC) is found toward the beginning of the manual. Figure number, description & page number are provided for quick reference to the page containing the related information.

4. RECOMMENDED SPARE PARTS

The Recommended Spare Parts, located near the end of the manual, references most frequently used maintenance parts.

5. PART NUMBER INDEX

A numerical index listing all part numbers & the corresponding page number(s) appears at the back of the manual.

6. NON-SERVICED PARTS

In some instances it is necessary to display non-serviced parts, assemblies or installations. In the case of assemblies & installations there will be a Ref in the Qty column & a note after the item description stating what is available for service within. In the case of parts that are not available for service within assemblies or components there will be a NSS (Not Sold Separately) listed in the part number column of the manual.

7. PARTS LIST ITEM NUMBERS

Numbers shown in the Item column correspond to numbers used in the associated illustration(s). Item numbers which are missing from sequence & are not shown in the illustration(s) are not used on that page.

8. INDENTED PART DESCRIPTION

An indented part description is included in the item under which it is indented.

9. ABBREVIATIONS & SYMBOLS

AC	Air Conditioning	LB	Pound
ANSI	American National Standards Institute	LH	Left Hand
AR	As Required	LS	Low Sulfur
ASME	American Society of Mechanical Engineers	MAX	Maximum
ASSY	Assembly	MM	Millimeter
AUS	Australia	N	Newton
AUX	Auxiliary	NA	Not Applicable
CE	European Conformity	NLA	No Longer Available
DIA	Diameter	NSS	Not Sold Separately
EURO	European	OD	Outside Diameter
FT	Foot	OZ	Ounce
GA	Gauge	P/N	Part Number
GR	Grade	QTY	Quantity
HD	Head	REF	Reference
HYD	Hydraulic	REQ	Required
ID	Inside Diameter	RH	Right Hand
IN	Inch	S/N	Serial Number
ISO	International Organization for Standards	SAE	Society of Automotive Engineers
ITSDF	Industrial Truck Standards Development Foundation	STD	Standard
KG	Kilogram	ULS	Ultra Low Sulfur
kW	Kilowatt	V	Volt

10. ILLUSTRATION REFERENCE LETTERS

When necessary, illustrations may contain reference letters that are intended to track information from one point to another in the illustration such as harnesses & hoses or any other information that has been separated in the illustration.

Note: Due to continuous product improvements, JLG Industries, Inc. reserves the right to make specification changes without prior notification. Contact JLG Industries, Inc. for updated information.



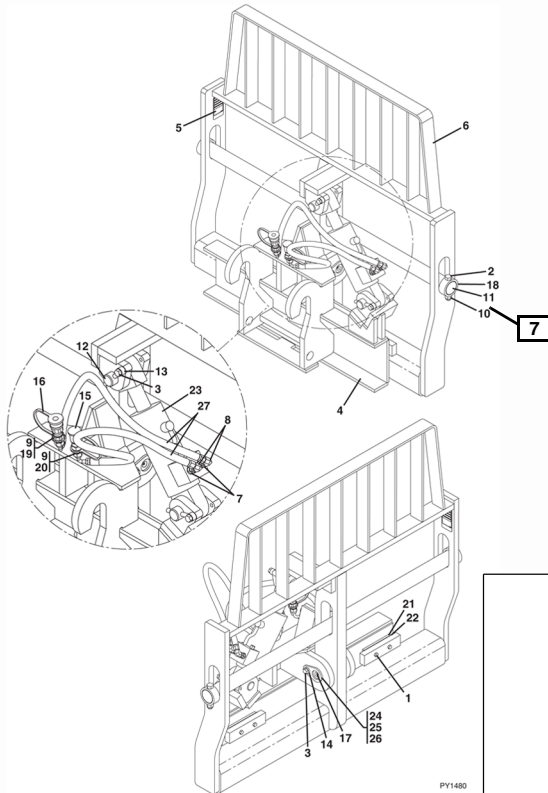
ATTACHMENTS

Model S/N 0160037799 & After
Model S/N 0160037798 & After
Model S/N 0160037793 & After

2

Figure 3-3 Side Tilt Carriage

1



3-10

Model Designation

1

Model S/N 0160037799 & After
Model S/N 0160037798 & After
Model S/N 0160037793 & After

ATTACHMENTS



Figure 3-3 Side Tilt Carriage

Item	Part Number	Qty.	Description	Rev.
	1170054	1	50 IN SIDE TILT CARRIAGE, (includes all items)	C
	1001101956	1	60 IN SIDE TILT CARRIAGE, (includes all items)	C
	1170057	1	72 IN SIDE TILT CARRIAGE, (includes all items)	C
1	0641612	4	HEX HD CAPSCREW, 3/8-16X1-1/2	
2	0642032	2	HEX HD CAPSCREW, 5/8-11X4	
3	0681810	3	HEX HD CAPSCREW, 1/2-13X1-1/4	
4	NSS	1	CARRIAGE BASE	
5	NSS	1	S/N PLATE	
6	NSS	1	CARRIAGE, SIDE TILT	
7	2110606	2	CONNECTOR	
8	2172106	2	CONNECTOR, 90 DEGREES	
9	2110808	2	CONNECTOR	
10	3300240	2	LOCK NUT, 5/8-11	
11	3423275	1	50 IN FORK PIN	
	3423242	1	60 IN FORK PIN	
	3423276	1	72 IN FORK PIN	
12	3423307	2	PIN	
13	3841203	2	KEEPER	
14	4891800	1	WASHER, 1/2	
15	8420053	1	DUST CAP	
16	8420055	1	DUST PLUG	
17	88671001	1	GREASE FITTING	
18	90200003	2	COLLAR	
19	91403413	1	CONNECTOR	
20	91403414	1	CONNECTOR	
21	1001090063	2	WEAR PAD	
22	1001090064	A/R	SHIM	
23		Ref	HYDRAULIC CYLINDER, (see Figure 9-12 for details)	
24	1001090140	1	BEARING	
25	1001099113	1	PIN	
26	1001099115	2	SLEEVE	
27	1001102378	2	HOSE ASSY, 3/8X39	

XXXXXX

Model Designation

3-11

This Page Intentionally Left Blank

TABLE OF CONTENTS

FIGURE NO.	TITLE	PAGE NO.
SECTION 1 –		
FRAME & ATTACHING PARTS		1-1
1-1	Frame & Attaching Parts	1-2
1-2	Covers	1-4
1-3	Outrigger Installation	1-8
1-4	Pintle Hook	1-10
SECTION 2 –		
BOOM		2-1
2-1	Boom Installation	2-2
2-2	First Boom Section	2-4
2-3	Second Boom Section	2-8
2-4	Third Boom Section	2-12
2-5	Fourth Boom Section	2-16
2-6	Extend Chains	2-20
2-7	Retract Chains	2-24
2-8	Manual Quick Attach	2-30
SECTION 3 –		
ATTACHMENTS		3-1
3-1	Standard Carriage	3-2
3-2	Side Tilt Carriage	3-6
3-3	50 In Side Shift Carriage	3-8
3-4	Dual Fork Positioning Carriage	3-10
3-5	90 Degree Swing Carriage	3-12
3-6	180 Degree Swing Carriage	3-14
3-7	Sheet Handler Carriage	3-18
3-8	Forks & Attaching Parts	3-20
3-9	Fork Mounted Platform	3-22
3-10	Fork Mounted Hook	3-24
3-11	General Purpose Bucket	3-26
3-12	Grapple Bucket	3-28
3-13	Truss Boom	3-30
3-14	Truss Boom with Winch	3-32
3-15	8 Foot Standard Mast	3-34
3-16	8 Ft Side Tilt Electric Mast	3-38
SECTION 4 –		
ENGINE & ATTACHING PARTS		4-1
4-1	Engine Installation	4-2
4-2	Engine	4-4
4-3	Fuel Tank & Lines	4-8
4-4	Radiator Installation	4-10
4-5	Air Cleaner Installation	4-14

TABLE OF CONTENTS

FIGURE NO.	TITLE	PAGE NO.
4-6	Exhaust Installation	4-18
 SECTION 5 –		
DRIVE TRAIN		5-1
5-1	Drivetrain Components	5-2
5-2	Front Axle	5-10
5-3	Front Axle - Central Housing & Steering	5-12
5-4	Front Axle - Differential	5-16
5-5	Front Axle - Hub Reduction	5-20
5-6	Front Axle - Brakes	5-28
5-7	Rear Axle	5-32
5-8	Rear Axle - Central Housing & Steering	5-34
5-9	Rear Axle - Differential	5-38
5-10	Rear Axle - Hub Reduction	5-42
5-11	Rear Axle - Brakes	5-48
5-12	Transmission	5-52
5-13	Transmission - Converter & Input	5-54
5-14	Transmission - Gearbox Housing	5-56
5-15	Transmission - Forward Gear Group	5-58
5-16	Transmission - Reverse Gear Group	5-60
5-17	Transmission - 1st Shaft Group	5-62
5-18	Transmission - 2nd Shaft Group	5-64
5-19	Transmission - 3rd Shaft Group	5-66
5-20	Transmission - 4th Shaft Group	5-68
5-21	Transmission - Power Take-Off	5-70
5-22	Transmission - Control Unit & Pressure Regulator	5-72
5-23	Transmission - Gearshift System	5-74
5-24	Transmission - Oil Pump, Filter & Dipstick	5-76
5-25	Transmission - Transfer Box	5-78
5-26	Wheel Assembly	5-80
5-27	Fender Installation	5-82
 SECTION 6 –		
CAB		6-1
6-1	Cab Installation	6-2
6-2	Cab Assembly	6-6
6-3	Cab Door	6-10
6-4	Cab Interior	6-12
6-5	Wipers	6-14
6-6	Seats	6-16
6-7	Heater Installation	6-18
6-8	Air Conditioning Installation	6-22

TABLE OF CONTENTS

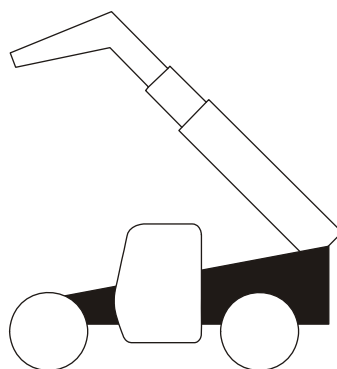
FIGURE NO.	TITLE	PAGE NO.
SECTION 7 –		
CONTROLS		7-1
7-1	Brake	7-2
7-2	Accelerator	7-4
7-3	Steering Column	7-6
7-4	Boom Joystick	7-8
7-5	Outrigger & Frame Level/Auxiliary Controller	7-10
SECTION 8 –		
HYDRAULIC CIRCUITS		8-1
8-1	Supply Circuit	8-2
8-2	Dump Circuit	8-6
8-3	Steer Select Circuit	8-8
8-4	Service Brake Circuit	8-10
8-5	Boom Joystick Circuit	8-12
8-6	Frame Level/Auxiliary Controller	8-14
8-7	Outrigger Controller	8-16
8-8	Lift Cylinder Circuit	8-18
8-9	Extend/Retract Cylinder Circuit	8-20
8-10	Tilt Cylinder & Compensation Cylinder Circuit	8-22
8-11	Boom Hydraulic Assembly	8-24
8-12	Auxiliary Hydraulic Circuit	8-26
8-13	Frame Level Circuit	8-30
8-14	Outrigger Circuit	8-32
SECTION 9 –		
HYDRAULIC COMPONENTS		9-1
9-1	Lift Cylinder & Hardware	9-2
9-2	Extend/Retract Cylinder & Hardware	9-4
9-3	Tilt Cylinder & Hardware	9-6
9-4	Compensation Cylinder & Hardware	9-8
9-5	Frame Level Cylinder & Hardware	9-10
9-6	Outrigger Cylinder & Hardware	9-12
9-7	Stabilizer Cylinder & Hardware	9-14
9-8	Side Tilt Carriage Cylinder	9-16
9-9	50 In Side Shift Carriage Cylinder	9-18
9-10	Swing Carriage Cylinder	9-20
9-11	Grapple Bucket Cylinder	9-24
9-12	Main Control Valve	9-26
9-13	Piston Pump	9-28
9-14	Hydraulic Tank	9-32
9-15	Steer Select Valve	9-34
9-16	Brake Valve	9-36
9-17	Hydraulic Manifold Valve	9-40

TABLE OF CONTENTS

FIGURE NO.	TITLE	PAGE NO.
9-18	Decompression Valve	9-42
SECTION 10 –		
ELECTRICAL		10-1
10-1	Engine Compartment Electrical Installation	10-2
10-2	Arctic Package Installation	10-10
10-3	Boom & Frame Electrical Installation	10-12
10-4	Cab Electrical Installation	10-16
10-5	Cab Switches	10-18
10-6	Clearsky Installation	10-20
10-7	Work Lights	10-22
10-8	Drive Lights	10-26
10-9	Engine Harness	10-28
10-10	Transmission Harness	10-36
10-11	Frame Harness	10-38
10-12	VEC Options Harness	10-42
10-13	Transmission Relay Harness	10-46
10-14	Enclosed Cab Options Harness	10-48
10-15	Dash Harness	10-50
10-16	Instrument Panel Harness	10-52
10-17	Frame Road Light Harness	10-54
10-18	Boom Work Light Harness	10-56
10-19	Cab Road Light Harness	10-58
10-20	Cab Work Light Harness	10-60
10-21	A/C Harness	10-62
10-22	VEC Harness	10-64
SECTION 11 –		
DECALS		11-1
11-1	Cab & Frame Decals	11-2
11-2	Boom Decals	11-6
SECTION 12 –		
RECOMMENDED SPARE PARTS		12-1
SECTION 13 – PART NUMBER INDEX		13-1

SECTION 1

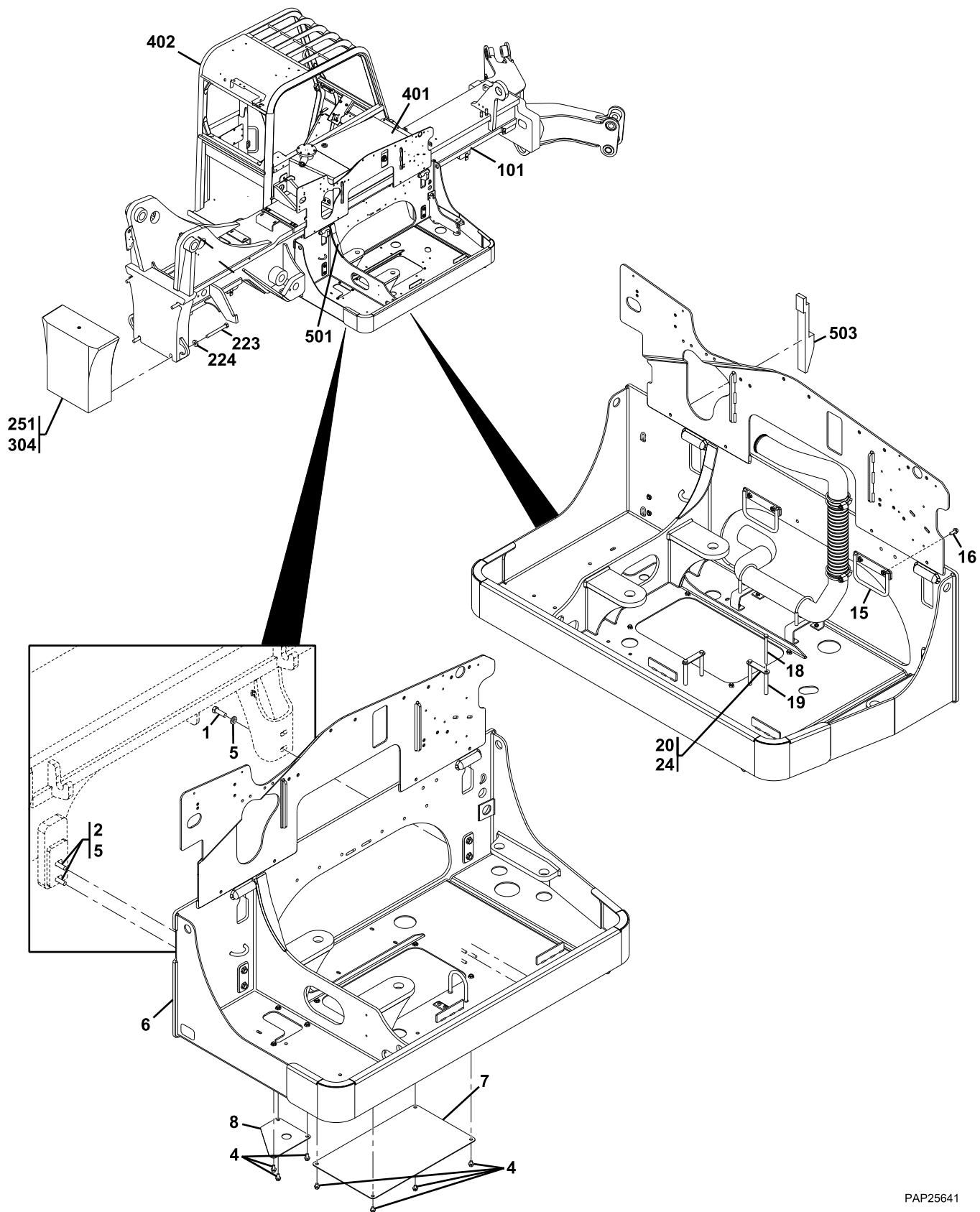
FRAME & ATTACHING PARTS





FRAME & ATTACHING PARTS

Figure 1-1 Frame & Attaching Parts



PAP25641

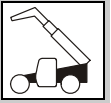


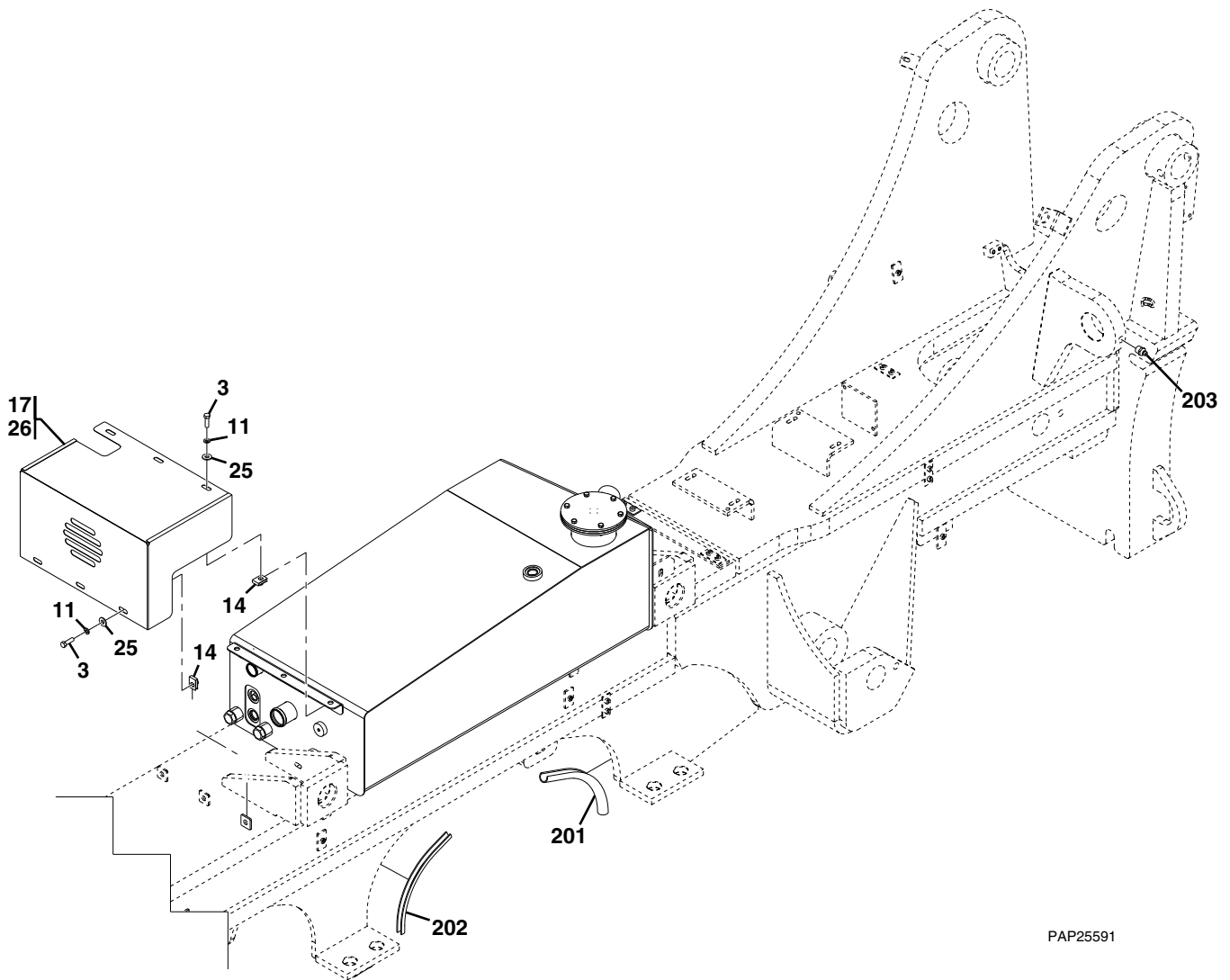
Figure 1-1 Frame & Attaching Parts

Item	Part Number	Qty.	Description	Rev.
	1001130125	Ref	ENGINE POD INSTALLATION, (if equipped for ULS) , (not available to order, see items 1 thru 24 for service)	H
	1001136089	Ref	ENGINE POD INSTALLATION, (if equipped for LS) , (not available to order, see items 1 thru 24 for service)	E
1	0682018	2	HEX HD CAPSCREW, 5/8-11X2-1/4	
2	0682032	2	HEX HD CAPSCREW, 5/8-11X4	
4	0811606	7	SCREW, 3/8-16X3/4	
5	4892000	4	WASHER, 5/8	
6	1001121031	1	POD WELDMENT SUPPORT	
7	1001121047	1	BOTTOM COVER PLATE	
8	1001128248	1	COOLER ACCESS COVER PLATE	
15	1001132796	2	HOSE GUIDE BRACKET	
16	0811610	4	SCREW, 3/8-16X1-1/4	
18	0641640	4	HEX HD CAPSCREW, 3/8-16X5	
19	1001143653	4	SPACER TUBE	
20	1001123654	2	HOSE GUIDE PLATE	
24	1001150299	2	HOSE, 3/4	
101	NSS	1	FRAME WELDMENT	
223	83201147	4	HEX HD CAPSCREW, 1-8X8-1/2, GR8, (torque to 860 lb-ft/1170 Nm)	
224	80241137	4	WASHER	
251	91140001	1	COUNTERWEIGHT, (if equipped)	
	1001097095	1	COUNTERWEIGHT WITH PINTLE HITCH ASSY, (if equipped) , (includes items 303 & 304)	B
303		Ref	PINTLE HOOK, (not shown), (see Figure 1-4 for details)	
304	1001091458	1	COUNTERWEIGHT	
401		Ref	HYDRAULIC TANK, (see Figure 9-14 for details)	
402		Ref	CAB WELDMENT, (see Figure 6-1 for details)	
501	90206202	11 in	TRIM-LOK	
502	4060918	39 in	TRIM-LOK, (not shown)	
503	1001125491	1	FOAM GASKET SEAL	



FRAME & ATTACHING PARTS

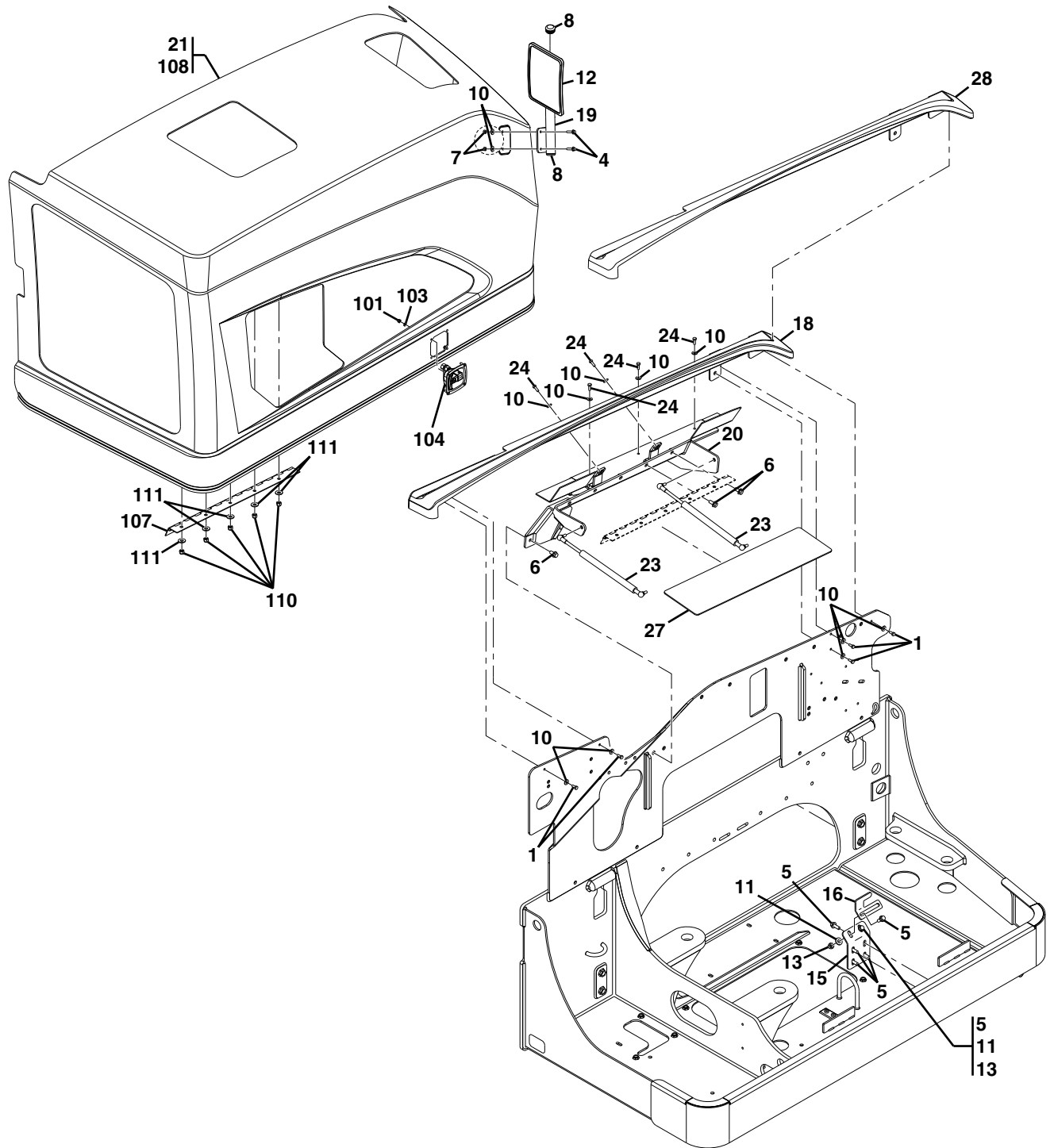
Figure 1-2 Covers



PAP25591



Figure 1-2 Covers (Continued)





FRAME & ATTACHING PARTS

Figure 1-2 Covers

Item	Part Number	Qty.	Description	Rev.
	1001129636	Ref	COVERS INSTALLATION, (not available to order, see items 1 thru 28 for service)	I
1	0641405	10	HEX HD CAPSCREW, 1/4-20X5/8, GR5	
3	0641610	5	HEX HD CAPSCREW, 3/8-16X1-1/4, GR5	
4	0791410	2	SCREW, 1/4-20X1-1/4	
5	0791608	6	SCREW, 3/8-16X1	
6	0811606	5	SCREW, 3/8-16X3/4	
7	3311405	2	HEX LOCKNUT, 1/4-20	
8	3520176	2	PLUG	
10	4751400	12	WASHER, 1/4	
11	4751600	7	WASHER, 3/8	
12	8866348	1	RH MIRROR, (includes washer & locknut)	
13	88501006	2	HEX NUT, 3/8-16	
14	88662523	5	TINNERMAN NUT	
15	1001121332	1	LATCH MOUNT BRACKET	
16	1001121337	1	LATCH CATCH BRACKET	
17	1001149900	1	FRONT COVER	
18	1001129637	1	HINGE COVER	
19	1001129639	1	MIRROR BRACKET	
20	1001144114	1	HINGE MOUNT SUPPORT	
21	1001131147	1	ENGINE ASSY COVER, (includes items 101 thru 111)	F
23	1001131247	2	GAS SPRING	
24	0811608	6	SCREW, 3/8-16X1	
25	4761600	5	LOCKWASHER, 3/8	
26	90206198	3 in	TRIM-LOK	
27	1001146367	1	INSULATE	
28	1001146371	1	INSULATE	
101	3290605	4	HEX LOCKNUT, M6X1	
103	4811700	4	WASHER, 6mm	
104	1001122219	1	COMPRESSION LATCH	
107	1001129358	1	ENGINE COVER HINGE	
108	1001129638	1	ENGINE COVER	
110	3300492	5	LOCKING NUT	
111	4751600	5	WASHER, 3/8	
201	1001144101	15.5 in	SPLIT CONDUIT	
202	90206203	13.5 in	TRIM-LOK	
203	88671001	2	GREASE FITTING, 1/8	

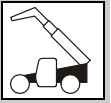


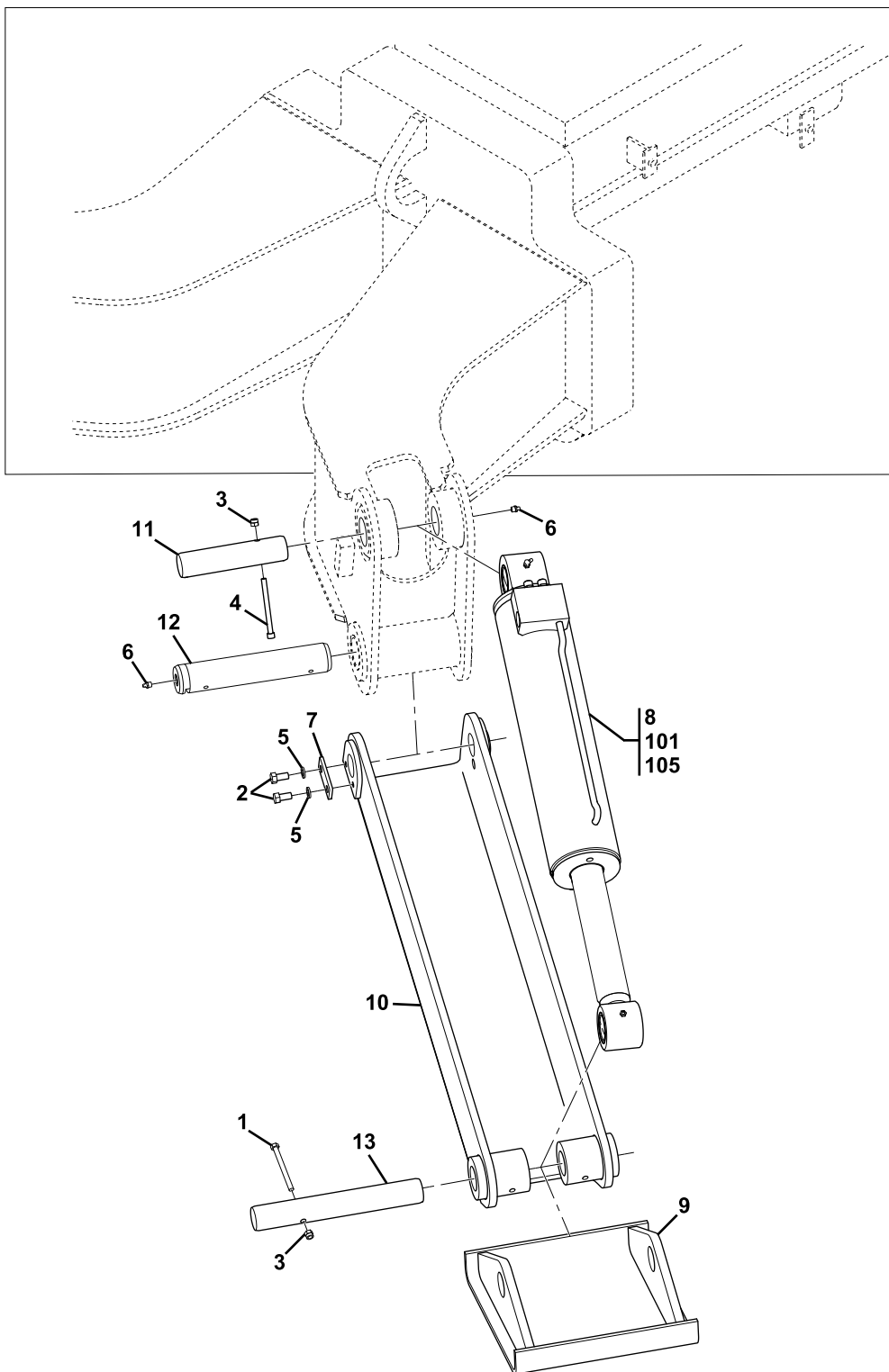
Figure 1-2 Covers (Continued)

Item	Part Number	Qty.	Description	Rev.



FRAME & ATTACHING PARTS

Figure 1-3 Outrigger Installation



PAP27020