

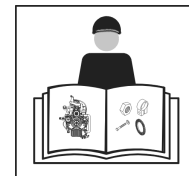
Lull[®]

Illustrated Parts Manual

***Models
644B, 6K, 844C,
8K, 1044C &
10K***

P/N - 1100820

Revised
April 24, 2009



EFFECTIVITY PAGE

June 23, 2003 - B-009 - Revised Manual

February 25, 2005 - C - Replaced all branding with JLG

April 24, 2009 - D - Revised Manual

EFFECTIVITY PAGE

TABLE OF CONTENTS

Using this book Serial Number Locations Section 1 — Drive Train

Drive Train Group Assembly	1.1.1
Drive Train Group Assembly	1.1.2
Front Drive Shaft Assembly	1.2.1
Drive Train Group Assembly	1.1.3
Front Drive Shaft Assembly	1.2.2
Rear Drive Shaft Assembly	1.3.1
Rear Drive Shaft Assembly	1.3.2
Differential Carrier Assembly - Front Axle (PS 7036)	1.4.1
Differential Carrier Assembly - Rear Axle (PS 7036)	1.5.1
Steer Axle Shafts & Knuckle Assembly (PS 7036)	1.6.1
Steer Axle Shafts & Knuckle Assembly (PS 7036)	1.6.2
Wheel End Assembly - With Wet Disc Brakes (PS 7036)	1.7.1
Wheel End Assembly - With Wet Disc Brakes (PS 7036)	1.7.2
Drive Flange Assembly (PS 7036)	1.8.1
Tie Rod & Steer Cylinder Mounting Assembly (PS 7036)	1.9.1
Steer Cylinder Assembly (PS 7036)	1.10.1
Steer Cylinder Assembly (PS 7036)	1.10.1.1
Differential Carrier Assembly - Front Axle (PS 8036)	1.14.1
Differential Carrier Assembly - Rear Axle (PS 8036)	1.15.1
Steer Axle Shafts & Knuckle Assembly (PS 8036)	1.16.1
Wheel End Assembly - With Wet Disc Brakes (PS 8036)	1.17.1
Wheel End Assembly - With DRY Disc Brakes (PS 8036)	1.17.2
Drive Flange Assembly (PS 8036)	1.18.1
Tie Rod & Steer Cylinder Mounting Assembly (PS 8036)	1.19.1
Steer Cylinder Assembly (PS 8036)	1.20.1
Converter & Flex Plate (3WG 100)	1.24.1
Gearbox Housing (3WG 100)	1.25.1
Input Group (3WG 100)	1.26.1
Clutch Pack, Forward, 1st Gear (3WG 100) (1 of 2)	1.27.1

Clutch Pack, Forward, 1st Gear (3WG 100) (2 of 2)	1.27.1
Clutch Pack, Reverse, 2nd Gear (3WG 100) (1 of 2)	1.28.1
Clutch Pack, Reverse, 2nd Gear (3WG 100) (2 of 2)	1.28.1
Clutch Pack, 3rd Gear (3WG 100) (1 of 2)	1.29.1
Clutch Pack, 3rd Gear (3WG 100) (2 of 2)	1.29.1
Output Group (3WG 100)	1.30.1
Power Take-Off & Filter (3WG 100)	1.31.1
Gearshift System (3WG 100)	1.32.1
Control Valve (3WG 100)	1.33.1
Oil Tubes & Dipstick (3WG 100)	1.34.1
Converter & Flex Plate (4WG 100)	1.38.1
Gearbox Housing (4WG 100)	1.39.1
Input Group & Layshaft (4WG 100)	1.40.1
Clutch Pack, Forward, 1st Gear (4WG 100) (1 of 2)	1.41.1
Clutch Pack, Forward, 1st Gear (4WG 100) (2 of 2)	1.41.1
Clutch Pack, Reverse, 2nd Gear (4WG 100) (1 of 2)	1.42.1
Clutch Pack, Reverse, 2nd Gear (4WG 100) (2 of 2)	1.42.1
Clutch Pack, 3rd Gear (4WG 100) (1 of 2)	1.43.1
Clutch Pack, 3rd Gear (4WG 100) (2 of 2)	1.43.1
Clutch Pack, 4th Gear (4WG 100) (1 of 2)	1.44.1
Clutch Pack, 4th Gear (4WG 100) (2 of 2)	1.44.1
Output Group (4WG 100)	1.45.1
Power Take-Off & Filter (4WG 100)	1.46.1
Gearshift System (4WG 100)	1.47.1
Control Valve (4WG 100)	1.48.1
Oil Tubes & Dipstick (4WG 100)	1.49.1
Transmission Oil Cooler Assembly	1.53.1
Transmission Oil Cooler Assembly	1.53.1.1
Park Brake Assembly	1.54.1
Park Brake Cylinder Mounting & Linkage Assembly	1.55.1
Park Brake Cylinder Mounting & Linkage Assembly	1.55.1.1

Section 2 — Power Plant

TABLE OF CONTENTS

Engine Mounting & Fuel Lines (Deere 4039D)	2.1.1
Exhaust Assembly (Deere 4039D)	2.2.1
Air Cleaner Assembly (Deere 4039D)	2.3.1
Radiator Group Assembly (Deere 4039D)	2.4.1
Throttle Group Assembly (Deere 4039D)	2.5.1
Throttle Group Assembly (Deere 4039D)	2.5.1.1
Engine Mounting & Fuel Lines (Deere 4039T)	2.6.1
Exhaust Assembly (Deere 4039T)	2.7.1
Air Cleaner Assembly (Deere 4039T)	2.8.1
Radiator Group Assembly (Deere 4039T)	2.9.1
Throttle Group Assembly (Deere 4039T)	2.10.1
Throttle Group Assembly (Deere 4039T)	2.10.1.1
Engine Mounting & Fuel Lines (Deere 4045T 100 hp)	2.11.1
Exhaust Assembly (Deere 4045T 100 hp)	2.12.1
Air Cleaner Assembly (Deere 4045T 100 hp)	2.13.1
Radiator Group Assembly (Deere 4045T 100 hp)	2.14.1
Throttle Group Assembly (Deere 4045T 100 hp)	2.15.1
Engine Mounting & Fuel Lines (Deere 4045T 115 hp)	2.16.1
Exhaust Assembly (Deere 4045T 115 hp)	2.17.1
Air Cleaner Assembly (Deere 4045T 115 hp)	2.18.1
Radiator Group Assembly (Deere 4045T 115 hp)	2.19.1
Throttle Group Assembly (Deere 4045t 115 hp)	2.20.1
Throttle Group Assembly (Deere 4045T 115 hp)	2.20.1.1
Engine Mounting & Fuel Lines (Deere 6068D)	2.21.1
Exhaust Assembly (Deere 6068D)	2.22.1
Air Cleaner Assembly (Deere 6068D)	2.23.1
Radiator Group Assembly (Deere 6068D)	2.24.1
Throttle Group Assembly (Deere 6068D)	2.25.1
Engine Mounting & Fuel Lines (Cummins 4B3.9)	2.26.1
Engine Mounting & Fuel Lines (Cummins 4B3.9)	2.26.1.1
Exhaust Assembly (Cummins 4B3.9)	2.27.1
Air Cleaner Assembly (Cummins 4B3.9)	2.28.1
Radiator Group Assembly (Cummins 4B3.9)	2.29.1
Radiator Group Assembly (Cummins 4B3.9)	2.29.1.1

Throttle Group Assembly (Cummins 4B3.9)	2.30.1
Throttle Group Assembly (Cummins 4B3.9)	2.30.1.1
Engine Mounting & Fuel Lines (Cummins 4BT3.9)	2.31.1
Engine Mounting & Fuel Lines (Cummins 4BT3.9)	2.31.1.1
Exhaust Assembly (Cummins 4BT3.9)	2.32.1
Air Cleaner Assembly (Cummins 4BT3.9)	2.33.1
Air Cleaner Assembly (Cummins 4BT3.9)	2.33.1.1
Radiator Group Assembly (Cummins 4BT3.9)	2.34.1
Radiator Group Assembly (Cummins 4BT3.9)	2.34.1.1
Throttle Group Assembly (Cummins 4BT3.9)	2.35.1
Throttle Group Assembly (Cummins 4BT3.9)	2.35.1.1
Throttle Group Assembly (Cummins 4BT3.9)	2.35.1.2
Engine Mounting & Fuel Lines (Cummins 6B5.9)	2.36.1
Exhaust Assembly (Cummins 6B5.9)	2.37.1
Air Cleaner Assembly (Cummins 6B5.9)	2.38.1
Radiator Group Assembly (Cummins 6B5.9)	2.39.1
Throttle Group Assembly (Cummins 6b5.9)	2.40.1
Throttle Group Assembly (Cummins 6B5.9)	2.40.1.1
Engine Mounting & Fuel Lines (Deere 4045D)	2.41.1
Exhaust Assembly (Deere 4045D)	2.42.1
Air Cleaner Assembly (Deere 4045D)	2.43.1
Radiator Group Assembly (Deere 4045D)	2.44.1
Throttle Group Assembly (Deere 4045D)	2.45.1

Section 3 — Frame and Operator's Compartment

Main Frame Assembly	3.1.1
Main Frame Assembly	3.1.1.1
Main Frame Assembly	3.1.2
Main Frame Assembly	3.1.3
Main Frame Assembly	3.1.3.1
Main Frame Assembly	3.1.4
Operator's Compartment Assembly	3.2.1
Operator's Compartment Assembly	3.2.1.1

TABLE OF CONTENTS

Operator’s Compartment Assembly	3.2.2
Operator’s Compartment Assembly	3.2.2.1
Instrument Panel Assembly	3.3.1
Instrument Panel Assembly	3.3.1.1
Instrument Panel Assembly	3.3.1.2
Steer Column Assembly	3.4.1
Outrigger Assembly	3.5.1

Section 4 — Boom and Transfer Carriage

Transfer Carriage/Boom Cradle Assembly	4.1.1
Transfer Carriage/Boom Cradle Assembly	4.1.2
Outer Boom Assembly (2-Section)	4.2.1
Outer Boom Assembly (2-Section)	4.2.1.1
Inner Boom Assembly (2-Section)	4.3.1
Outer Boom Assembly (3-Section)	4.4.1
Outer Boom Assembly (3-Section)	4.4.1.1
Outer Boom Assembly (3-Section)	4.4.1.2
Outer Boom Assembly (3-Section)	4.4.1.3
Middle Boom Assembly (3-Section)	4.5.1
Middle Boom Assembly (3-Section)	4.5.1.1
Middle Boom Assembly (3-Section)	4.5.1.2
Middle Boom Assembly (3-Section)	4.5.1.3
Middle Boom Assembly (3-Section)	4.5.1.4
Middle Boom Assembly (3-Section)	4.5.1.5
Inner Boom Assembly (3-Section)	4.6.1
Inner Boom Assembly (3-Section)	4.6.1.1
Outer Boom Assembly (4-Section)	4.7.1
Outer Boom Assembly (4-Section)	4.7.1.1
Outer Boom Assembly (4-Section)	4.7.1.2
Outer Boom Assembly (4-Section)	4.7.1.3
Rear Middle Boom Assembly (4-Section)	4.8.1
Rear Middle Boom Assembly (4-Section)	4.8.1.1
forward Middle Boom Assembly (4-Section)	4.9.1

Forward Middle Boom Assembly (4-Section)	4.9.1.1
Forward Middle Boom Assembly (4-Section)	4.9.1.2
Inner Boom Assembly (4-Section)	4.10.1
Quick Attach Group Assembly (Weldment Type)	4.11.1
Quick Attach Group Assembly (Cast Type)	4.11.1.1
Quick Attach Group Assembly (Cast Type)	4.11.1.2

Section 5 — Boom and Transfer Hydraulics

Hoist & Rear Carriage Tilt Hydraulic circuit	5.1.1
Hoist & Rear Carriage Tilt Hydraulic circuit	5.1.1.1
Hoist & Rear Carriage Tilt Hydraulic circuit	5.1.2
Hoist & Rear Carriage Tilt Hydraulic circuit	5.1.2.1
Hoist & Rear Carriage Tilt Hydraulic circuit	5.1.3
Hoist & Rear Carriage Tilt Hydraulic circuit	5.1.3.1
Hoist & Rear Carriage Tilt Hydraulic circuit	5.1.4
Hoist & Rear Carriage Tilt Hydraulic circuit	5.1.4.1
Rear Carriage Tilt Cylinder Assembly	5.2.1
Rear Carriage Tilt Cylinder Assembly	5.2.1.1
Rear Carriage Tilt Cylinder Assembly	5.2.2
Hoist Cylinder Assembly	5.3.1
Hoist Cylinder Assembly	5.3.2
Transfer Hydraulic Circuit	5.4.1
Transfer Hydraulic Circuit	5.4.1.1
Transfer Cylinder Assembly	5.5.1
Transfer Cylinder Assembly	5.5.1.1
Boom Hydraulic Circuit (2-Section)	5.6.1
Boom Hydraulic Circuit (2-Section)	5.6.1.1
Boom Hydraulic Circuit (2-Section)	5.6.2
Boom Hydraulic Circuit (2-Section)	5.6.2.1
Boom Extension Cylinder Assembly (2-Section)	5.7.1
Boom Extension Cylinder Assembly (2-Section)	5.7.1.1
Boom Hydraulic Circuit (3-Section)	5.8.1
Boom Hydraulic Circuit (3-Section)	5.8.1.1

TABLE OF CONTENTS

Boom Hydraulic Circuit (3-Section)	5.8.1.2
Boom Hydraulic Circuit (3 Section)	5.8.2
Boom Hydraulic Circuit (3 Section)	5.8.2.1
Boom Hydraulic Circuit (3 Section)	5.8.2.2
Boom Extension Cylinder Assembly (3-Section)	5.9.1
Boom Hydraulic Circuit (4-Section)	5.10.1
Boom Hydraulic Circuit (4-Section)	5.10.1.1
Boom Hydraulic Circuit (4-Section)	5.10.1.2
Boom Hydraulic Circuit (4-Section)	5.10.1.3
Boom Hydraulic circuit (4-Section)	5.10.1.4
Boom Hydraulic Circuit (4-Section)	5.10.2
Boom Hydraulic Circuit (4-Section)	5.10.2.1
Boom Hydraulic Circuit (4-Section)	5.10.2.2
Boom Hydraulic Circuit (4-Section)	5.10.2.3
Boom Extension Cylinder Assembly (4-Section)	5.11.1
Front Carriage Tilt Cylinder Assembly	5.12.1
Front Carriage Tilt Cylinder Assembly	5.12.2

Section 6 — Pump, Suction - Return and Valve Plate Components

Pump, Suction - Return Hydraulic Circuit	6.1.1
Pump, Suction - Return Hydraulic Circuit	6.1.1.1
Pump, Suction - Return Hydraulic Circuit	6.1.2
Valve Plate Components Assembly	6.2.1
Valve Plate Components Assembly	6.2.2
6 - Port Circuit Selector Valve Assembly	6.3.1
Frame Tilt Lockout Valve	6.4.1
Hydraulic boom Control Valve Assembly (2-Spool)	6.5.1
Relief Valve Assembly	6.6.1
Hydraulic Control Valve Assembly	6.7.1
Hydraulic Control Valve Assembly	6.7.2
Valve Section Ass'y - transfer/Auxiliary/Frame Tilt/Outriggers	6.8.1
Valve Section Assembly - Carriage Fork Tilt	6.9.1

Control Manifold Assembly	6.10.1
Pump Unloader Circuit (Natural Engines Only)	6.11.1
Pump unloader Valve Assembly	6.12.1
Pump, Suction - Return Hydraulic Circuit - Mid Inlet	6.15.1
Pump, Suction - Return Hydraulic Circuit - Mid Inlet	6.15.2
Valve Plate Components Assembly (Mid Inlet)	6.16.1
Valve Plate Components Assembly (Mid Inlet)	6.16.1.1
Valve Plate Components Assembly (Mid Inlet)	6.16.2
Valve Plate Components Assembly (Mid Inlet)	6.16.2.1
6 - Port Circuit Selector Valve Assembly	6.17.1
Pump-Valve Sub Assembly	6.18.1
Pump-Valve Sub Assembly	6.18.1.1
Hydraulic Control Valve Assembly - (Mid Inlet)	6.19.1
Hydraulic Control Valve Assembly - (Mid Inlet)	6.19.2
Hydraulic Control Valve Assembly - (Mid Inlet)	6.19.3
Valve Section Assembly - boom	6.20.1
Valve Section Assembly - Fr. Tilt./Transfer/Aux./Outrig./Unloader	6.21.1
Valve Section Assembly - Carriage Fork Tilt	6.22.1
Relief Valve Assembly	6.23.1
Relief Valve Assembly - Mid inlet	6.24.1
Hydraulic Return Line Filter Assembly	6.27.1
Pressure Filter Assembly	6.28.1
Pressure Filter Assembly	6.28.1.1

Section 7 — Control Hydraulics

Joystick Control Hydraulic Circuit	7.1.1
Joystick Control Hydraulic Circuit	7.1.2
Frame Tilt & Rear Oscillation Lock Hydraulic Circuit	7.2.1
Frame Tilt & Rear Oscillation Lock Hydraulic Circuit	7.2.2
Test Port Hydraulics Circuit	7.3.1
Oscillation Control Block Assembly	7.4.1
Joystick Control Hydraulic Circuit (Mid Inlet)	7.7.1
Joystick Control Hydraulic Circuit (Mid Inlet)	7.7.1.1

TABLE OF CONTENTS

Joystick Control Hydraulic Circuit (Mid Inlet)	7.7.2
Joystick Control Hydraulic Circuit (Mid Inlet)	7.7.2.1
Joystick Control Hydraulic Circuit (Mid Inlet)	7.7.3
Joystick Control Hydraulic Circuit (Mid Inlet)	7.7.3.1
Joystick Control Hydraulic Circuit (Mid Inlet)	7.7.4
Joystick Control Hydraulic Circuit (Mid Inlet)	7.7.4.1
Frame Tilt & Rear Oscillation Lock Hydraulic Circuit	7.8.1
Frame Tilt & Rear Oscillation Lock Hydraulic Circuit	7.8.1.1
Frame Tilt & Rear Oscillation Lock Hydraulic Circuit	7.8.1.2
Frame Tilt & Rear Oscillation Lock Hydraulic Circuit	7.8.2
Frame Tilt & Rear Oscillation Lock Hydraulic Circuit	7.8.2.1
Frame Tilt & Rear Oscillation Lock Hydraulic Circuit	7.8.2.2
Rear Axle Stabilizer Control Valve Assembly	7.9.1
Rear Axle Stabilizer Control Valve Assembly	7.9.1.1
Test Port Hydraulics Assembly	7.10.1
Test Port Hydraulics Assembly	7.10.1.1
Oscillation Control Block Assembly	7.11.1
Oscillation Control Block Assembly	7.11.1.1
Inline filter Assembly	7.12.1
Joystick Control Valve Assembly	7.14.1
Frame Tilt Control Valve Assembly	7.15.1
Frame Tilt Cylinder Assembly	7.16.1
Frame Tilt Cylinder Assembly	7.16.1.1
Rear Oscillation Lock Cylinder Assembly	7.17.1
Outrigger Hydraulics Circuit	7.20.1
Outrigger Hydraulics Circuit	7.20.1.1
Outrigger Hydraulics Circuit	7.20.1.2
Outrigger Hydraulics Circuit	7.20.1.3
Outrigger Control valve Assembly	7.21.1
3 Handle Single Axis Control Valve Assembly	7.21.1.1
Outrigger Over-Ride Valve Assembly	7.22.1
Outrigger Cylinder Assembly	7.23.1
Boom Extend Lockout Valve Assembly	7.24.1

Section 8 — Steering and Brake Hydraulics

Steering Hydraulic Circuit	8.1.1
Service Brake Hydraulic Circuit	8.2.1
Service Brake Valve Assembly	8.3.1
Park Brake Hydraulic Circuit	8.4.1
Steering Hydraulic Circuit (Mid Inlet)	8.7.1
Service Brake Hydraulic Circuit (Mid Inlet)	8.8.1
Service Brake Hydraulic Circuit (Mid Inlet)	8.8.1.1
Service Brake Hydraulic Circuit (Mid Inlet)	8.8.2
Service Brake Hydraulic Circuit (Mid Inlet)	8.8.2.1
Service Brake Valve Assembly (Mid Inlet)	8.9.1
Park Brake Hydraulic Circuit (Mid Inlet)	8.10.1
Park Brake Hydraulic Circuit (Mid Inlet)	8.10.1.1
Park Brake Valve Assembly	8.13.1
Accumulator Assembly	8.14.1

Section 9 — Electrical

Electrical Group - Operator's Compartment	9.1.1
Electrical Group - Operator's Compartment	9.1.1.1
Electrical Group - Operator's Compartment	9.1.1.2
Electrical Mounting Panel - Fuses, Relays & Buzzer	9.2.1
Electrical Mounting Panel - Fuses, Relays & Buzzer	9.2.1.1
Electrical Mounting Panel - Fuses, Relays & Buzzer	9.2.1.2
Electrical Group - Transmission Control	9.3.1
Electrical Group - Transmission Control	9.3.1.1
Electrical Group - Transmission Control	9.3.1.2
Electrical Group - Frame (Valve Plate)	9.4.1
Electrical Group - Frame (Valve Plate)	9.4.1.1
Electrical Group - Frame (Valve Plate)	9.4.1.2
Electrical Group - Frame (Valve Plate)	9.4.1.3
Electrical Group - Outrigger/Boom Extend Lockout	9.5.1
Electrical Group - Outrigger/Boom Extend Lockout	9.5.1.1

TABLE OF CONTENTS

Electrical Group - Engine (Deere) 4039D & 4039T	9.6.1
Electrical Group - Engine (Deere) 4045D, 4045T & 6068D	9.6.2
Electrical Group - Engine (Deere) 4045D, 4045T & 6068D	9.6.2.1
Electrical Group - Engine (Cummins) 4BT3.9	9.7.1
Electrical Group - Engine (Cummins) 4BT3.9	9.7.1.1
Electrical Group - Engine (Cummins) 4B3.9	9.7.2
Electrical Group - Engine (Cummins) 4B3.9 EPA	9.7.2.1
Electrical Group - Engine (Cummins) 6BT5.9	9.7.3

Section 10 — Decals

Section 10 — Optional Equipment

Decal Group Common	10.1.1
Decal Group Common	10.1.1.1
Decal Group & Flip Cards	10.2.1
(Optional) Hydraulic Oil Cooler Assembly	10.6.1
(Optional) Hydraulic Oil Cooler Assembly	10.6.1.1
Window Assembly, Enclosed Cab	10.10.1
Door Assembly, Enclosed Cab	10.11.1
Windshield Assembly, Enclosed Cab	10.12.1
Windshield Wiper Assembly, Enclosed Cab	10.13.1
Insulation Assembly, Enclosed Cab	10.14.1
Second Auxiliary Hydraulic Circuit (4-Section)	10.20.1
Second Auxiliary Hydraulic Circuit (4-Section)	10.20.1.1
Second Auxiliary Hydraulic circuit (4-Section)	10.20.1.2
Second Auxiliary Hydraulic circuit (4-Section)	10.20.1.3
(Optional) Drive Lockout Override	10.22.1
(Optional) Transmission Disconnect Override Valve	10.23.1
(Optional) Worklight Assembly	10.25.1
(Optional) Worklight Assembly	10.25.1.1
(Optional) Roadway Lights Assembly	10.26.1
(Optional) Roadway Lights Assembly (Mid Inlet)	10.26.1.1
(Optional) Roadway Lights Dash Harness w/o Circuit Board	10.27.1
(Optional) Roadway Lights Dash Harness w/Circuit Board	10.27.1.1

(Optional) Strobe/ Rotating Beacon Lights	10.28.1
-----------------------------------------------------	---------

Section 11 — Attachments

Standard (Non-Tilt) Fork Carriage Assembly, Model 8 50	11.1.1
Standard (Non-Tilt) Fork Carriage Assembly, Model 10 50	11.1.2
Framers (Non-Tilt) Fork Carriage Assembly, Model 8 74	11.2.1
Framers (Non-Tilt) Fork Carriage Assembly, Model 10 74	11.2.2
Standard Tilting Fork Carriage Assembly, Model 8T50	11.3.1
Standard Tilting Fork Carriage Assembly, Model 10T50	11.3.2
Framers Tilting Fork Carriage Assembly, Model 8T74	11.4.1
Framers Tilting Fork Carriage Assembly, Model 10T74	11.4.2
Tilting Carriage Cylinder Assembly	11.5.1
Tower Assembly	11.10.1
Carriage Assembly, Tower, Tilting	11.11.1
Carriage Assembly Tower (Non-Tilt)	11.12.1
Tower Quick Attach Lock Plate Assembly	11.13.1
Tower Cylinder Assembly	11.14.1
Carriage Assembly Single Fork Positioning	11.16.1
Carriage Assembly Dual Fork Positioning	11.17.1
Fork Positioning Cylinder Assembly	11.18.1
Truss Boom Assembly, Model 2TB10	11.20.1
Truss Boom Assembly With Winch, Model 2TBW10	11.21.1
Utility Bucket 1.25 Cu. Yd.	11.22.1

USING THIS BOOK

644B-37 S/N 101-586
644B-42 S/N 101-156
844C-42 S/N 101-468
1044C-42 S/N 101-113
1044C-54 S/N 101-124
6K-37 S/N 101-274
6K-42 S/N 101-115
8K-42 S/N 101-196
10K-42 S/N 101-106
10K-54 S/N 101
MISSION OIL COOLER ASSEMBLY 1.53.1

(B)

↙

(A)

↙

(C)

↙

644B
6K
844C
8K
1044C
10K
▼

Figure 1

This parts book covers all models, but some pages may only be specific to a few of them. To help you identify the page you're looking for, model numbers are always listed in the lower, far right corner of each parts list page (Figure 1, A).

Specific model and serial number information (B) is located on the lower, right side of each parts list page, above the page title (C).

How to Find What You're Looking For

To start, you must have the model and serial numbers, but you don't need the whole serial number—just the last digits will do. If it's related to the engine, you may need the engine model also.

A "Section Quick Reference" can be found at the beginning of the book as well as a complete table of contents, and each section has its own table of contents. Find the section, then the subject and page concerning the part you're after. Go to the page and see if it lists your machine's model and serial number. If not, it can probably be found on the pages immediately following that one.

For example:

You need a throttle part for an **844C-42**, serial number **302**, with a Cummins **6B5.9** engine.

Section 2, "Power Plant", contains information about engine installations. In the table of contents, you find a listing under "Cummins 6B5.9" for "Throttle Group Assembly" on page 2.40.1.

844C-42 S/N 101-291
1044C-42 S/N 101-106
1044C-54 S/N 101-104
8K-42 S/N 101-171
GROUP ASSEMBLY (Cummins 6B5.9) 2.40.1

(E)

↙

(D)

↙

(F)

↙

644B
6K
844C
8K
1044C
10K
▼

(G)

↙

Figure 2

After going to that page, you'll see your model listed on the right-hand side in bold text (Figure 2, D). This means that the model is covered on this page, but the machine serial number (302) is not shown in the specific information (E). (Grayed model numbers (F) means that those models are not covered by that page.) The black arrow (G) tells you that more serial numbers and/or different models can be found on the next page.

844C-42 S/N 292-
1044C-42 S/N 107-
1044C-54 S/N 105-
8K-42 S/N 172-
10K-42 S/N 101-
10K-54 S/N 101-
GROUP ASSEMBLY (Cummins 6B5.9) 2.40.1.1

(I)

↙

(H)

↙

(J)

↙

644B
6K
844C
8K
1044C
10K
▼

Figure 3

The next page (2.40.1.1) shows that it contains the information for your machine model and serial number (Figure 3, H & I). The gray arrow (J) means that's the last page for that particular subject.

Page Numbers

Understanding how the page numbers are structured will help you navigate through the book.

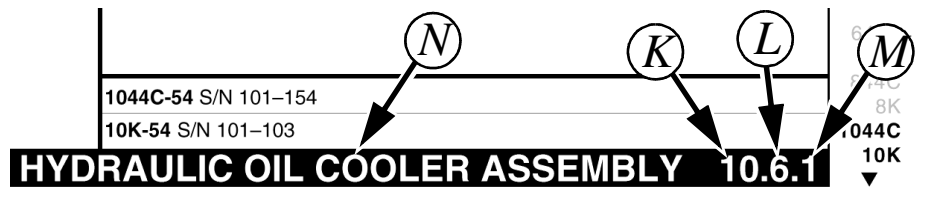


Figure 4

Figure 4 shows a typical page number.

- First number (K): Always matches the section number.
- Second number (L): Represents the subject title (N) in that section only.
- Third number (M): Shows page order for the machine models under that particular subject (N).

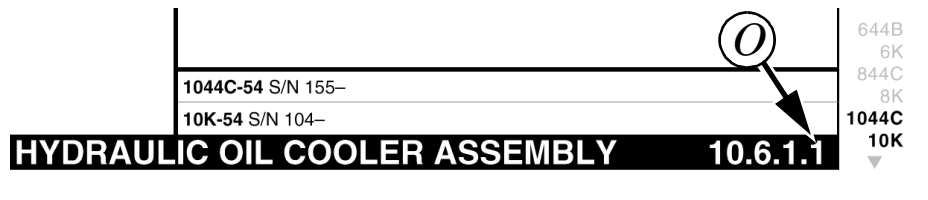


Figure 5

Figure 5 shows a page number with additional serial numbers not covered by the previous page (Figure 4).

- Fourth number (O): First, second, third, etc., page of additional serial numbers for the specified models.

General Information

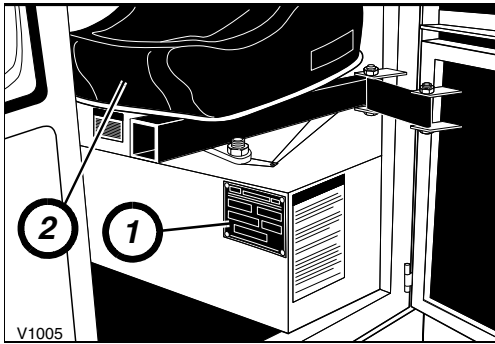
The revision appears in the right hand margin of each page. The quantity shown in the “QTY” column is the number of parts used on that assembly. Where parts are referenced “REF” the part shown is included in another assembly or part of another item. For certain parts such as shims, spacers, etc. “A/R” indicates that the quantity to be used is as required.

Abbreviations

The following abbreviations are commonly used in this manual:

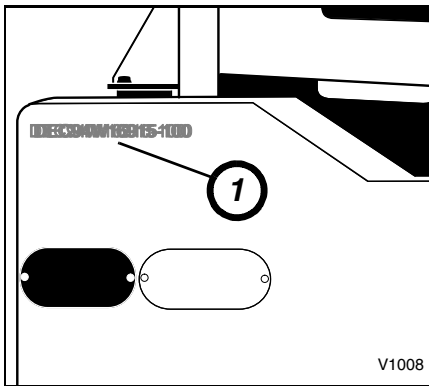
A/R	As Required	N/A	Not Applicable
Amp	Ampere	N.L.A.	No Longer Available
Ass’y	Assembly	N.P.T.	National Pipe Thread
AUX	Auxiliary	N.S.S.	Not Sold Separately
BCI	Battery Council International	O.D.	Outside Diameter
C.....	(Metric) Class	Osc.	Oscillation
CCA ...	Cold Cranking Performance Rating	oz.	Ounce(s)
Cyl.	Cylinder	Pcs.	Pieces
D.P.D.T.	Dual Pole, Dual Throw	P/N	Part Number
D.P.S.T.	Dual Pole, Single Throw	P.S.I.	Pounds Per Square Inch
Dia.	Diameter	Pt.	Point
Diff.	Differential	Rd.	Round
GA	Gauge	REF	Reference
GR	Grade	Req.	Required
Hd.	Head	R.H.	Right Hand
Hx.	Hex	S.P.D.T.	Single Pole, Dual Throw
Hyd.	Hydraulic	S.P.S.T.	Single Pole, Single Throw
I.D.	Inside Diameter	S/N	Serial Number
in.	Inches	SAE ..	Society of Automotive Engineers
Incl.	Includes	STD.	Standard
JIC	Joint Industry Council	Temp.	Temperature
Lg.	Long	Trans.	Transmission
L.H.	Left Hand	w/	With
mm	Millimeter	w/o	Without

SERIAL NUMBER LOCATIONS



Machine Serial Number Plate

The machine serial number plate (1) is mounted in the cab, below seat (2).



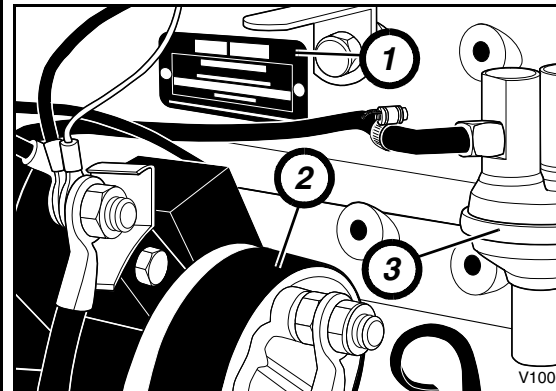
Stamped Machine Serial Number

The machine serial number (1) is also stamped into the frame on the left, rear corner of the machine.

SERIAL NUMBER CODES

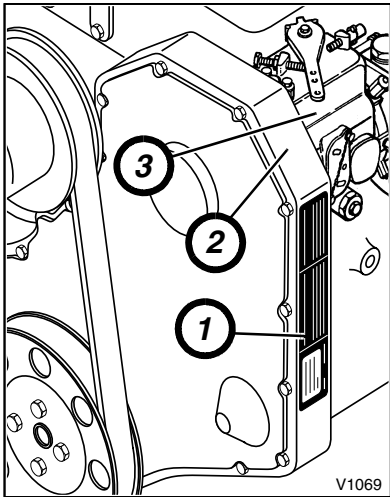
XX X X X X - 101

YEAR	MODEL	ENGINE	TRANS.	AXLES	SN
90	V-644B-37	12-DEERE 4039D	N-ZF 3WG 100	15-SPICER 7036-171	STARTING WITH SN 101
91	W-844C-42	13-CUMMINS 4B3.9	P-ZF 4WG 100	16-SPICER 7036-183	
92	X-6K-37	14-CUMMINS 4BT3.9	W-CLARK T12366	17-SPICER 7036-190	
93	Y-8K-42	16-DEERE 4039T		18-SPICER 7036-182	
94	Z-644B-42	17-CUMMINS 6B5.9		19-SPICER 8036-100	
95	AA-1044C-42	18-DEERE 6068D		20-SPICER 8036-101	
96	AB-1044C-54	19-DEERE 4045T (100 hp)		21-SPICER 7036-202	
97	AD-10K-42	20-DEERE 4045T (115 hp)		22-SPICER 7036-209	
98	AE-10K-54	21-CUMMINS 4BT3.9 (EPA)		24-SIGE/ SPICER 420S	
99	AG-6K-42	23-DEERE 4045D			
00	AL-644D-34	24-CUMMINS 4B3.9 (EPA)			
		25-CUMMINS 4BT3.9 (85 hp)			



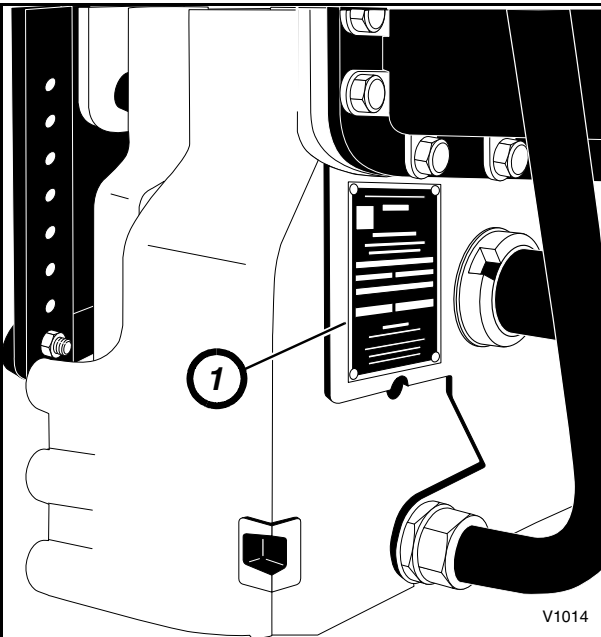
Engine Serial Number — John Deere

The engine serial number plate (1) is located on the left side of the engine, near starter (2) and fuel pump (3).



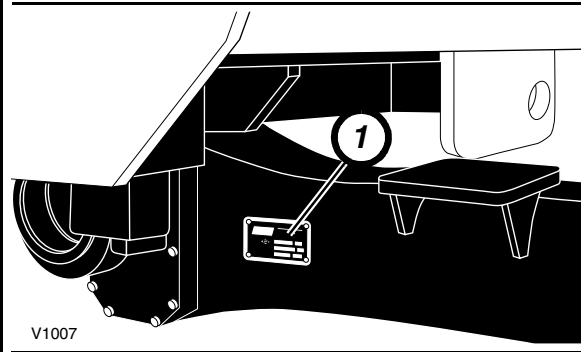
The engine serial number plate (1) is located on the right side of the engine, on gear housing (2) near the injection fuel pump (3).

Engine Serial Number — Cummins



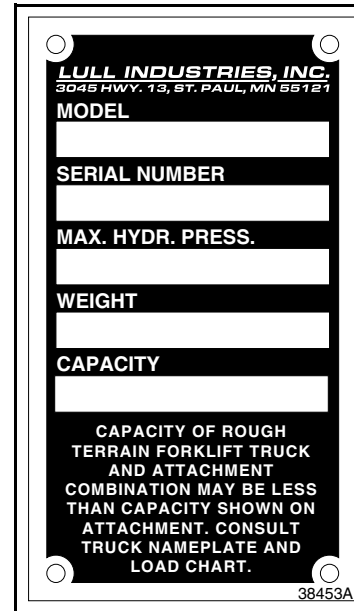
The transmission serial number plate (1) is located on the left, lower rear side of the transmission housing.

Transmission Serial Number



The front axle serial number plate (1) is located on the left, front side of the axle housing. The rear axle serial number plate is located on the right, rear side of the axle housing.

Axle Serial Number



The location of this plate varies with attachment.

Attachment Serial Number Plate

TABLE OF CONTENTS

Section 1 — Drive Train

Drive Train Group Assembly	1.1.1
Front Drive Shaft Assembly	1.2.1
Rear Drive Shaft Assembly	1.3.1

PS7036 Axles

Differential Carrier Assembly - Front Axle (Limited Slip)	1.4.1
Differential Carrier Assembly - Rear Axle (Standard)	1.5.1
Steer Axle Shafts & Knuckle Assembly	1.6.1
Wheel End Assembly -	1.7.1
Drive Flange Assembly	1.8.1
Tie Rod & Steer Cylinder Mounting Assembly	1.9.1
Steer Cylinder Assembly	1.10.1

PS8036 Axles

Differential Carrier Assembly - Front Axle (Limited Slip)	1.14.1
Differential Carrier Assembly - Rear Axle (Standard)	1.15.1
Steer Axle Shafts & Knuckle Assembly	1.16.1
Wheel End Assembly -	1.17.1
Drive Flange Assembly	1.18.1
Tie Rod & Steer Cylinder Mounting Assembly	1.19.1
Steer Cylinder Assembly	1.20.1

Transmission 3WG 100

Converter & Flex Plate	1.24.1
Gearbox Housing	1.25.1
Input Group	1.26.1
Clutch Pack, Forward, 1st Gear	1.27.1
Clutch Pack, Reverse, 2nd Gear	1.28.1
Clutch Pack, 3rd Gear	1.29.1
Output Group	1.30.1

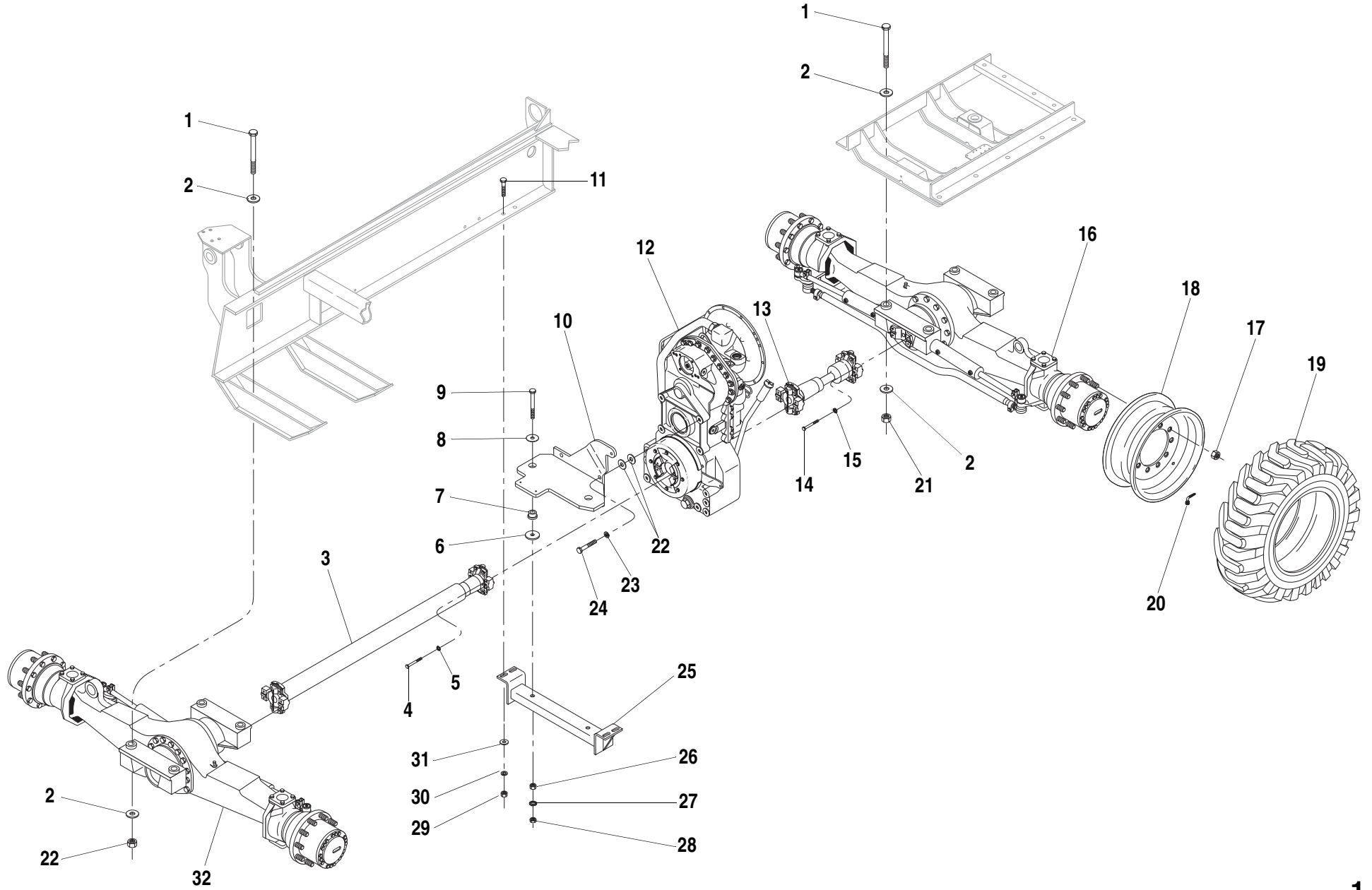
Power Take-Off & Filter	1.31.1
Gearshift System	1.32.1
Control Valve	1.33.1
Oil Tubes & Dipstick	1.34.1

Transmission 4WG 100

Converter & Flex Plate	1.38.1
Gearbox Housing	1.39.1
Input Group and Layshaft	1.40.1
Clutch Pack, Forward, 1st Gear	1.41.1
Clutch Pack, Reverse, 2nd Gear	1.42.1
Clutch Pack, 3rd Gear	1.43.1
Clutch Pack, 4th Gear	1.44.1
Output Group	1.45.1
Power Take-Off & Filter	1.46.1
Gearshift System	1.47.1
Control Valve	1.48.1
Oil Tubes & Dipstick	1.49.1

Common Components

Transmission Oil Cooler Assembly	1.53.1
Park Brake Assembly	1.54.1
Park Brake Cylinder Mounting & Linkage Assembly	1.55.1



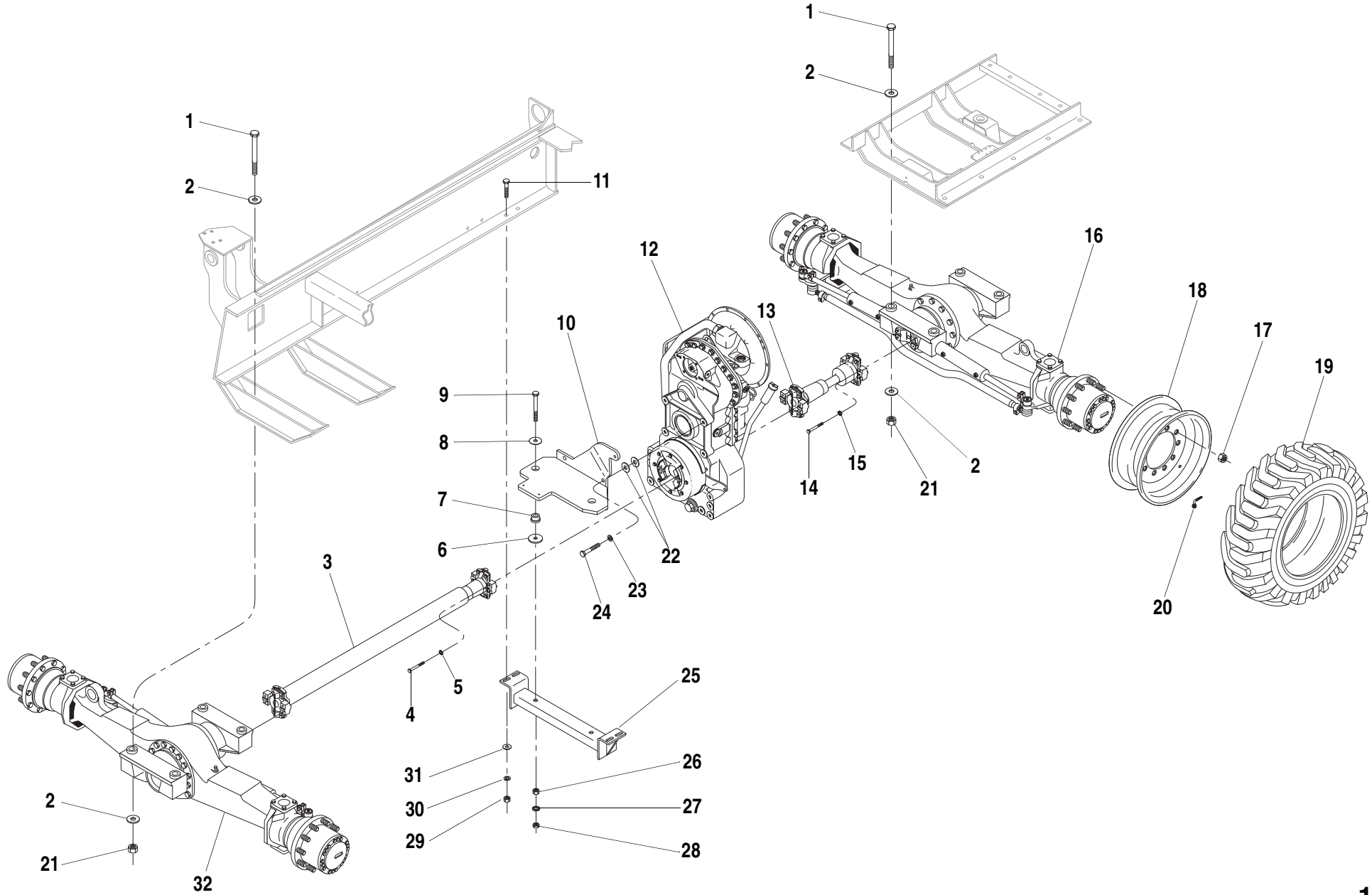
ITEM	PART NO.	QTY.	DESCRIPTION
1	P00941	8	Capscrew, Hx., 1"-8 x 7" GR 8
2	P01259	16	Flatwasher, 1" SAE - Hardened
3	35351B	1	Drive Shaft, Front (Includes Items 4, 5) (See Page 1.2.1 for Breakdown)
4	P00284	8	Capscrew, Hx., 3/8"-24 x 1 3/4" GR 8
5	P01359	8	Starwasher, 3/8"
6	①38112A	2	Spacer
7	P32961	2	Rubber Mount, Transmission
8	15616A	2	Snubbing Washer
9	P00694	2	Capscrew, Hx., 5/8"-18 x 5 1/2" GR 8
10	②38777B	1	Transmission Mount
11	P00605	4	Capscrew, Hx., 5/8"-11 x 2 1/4"
12	38369A	1	Transmission, 3 Speed (See Pages 1.24.1-1.34.1 for Breakdown)
13	36878B	1	Drive Shaft, Rear (Includes Items 14,15) (See Page 1.3.1 for Breakdown)
14	P00284	8	Capscrew, Hx., 3/8"-24 x 1 3/4" GR 8
15	P01359	8	Starwasher, 3/8"
16	③39682A	1	Axle, Rear (Includes Item 17) (Replaces 38541A) (See Pages 1.4.1-1.10.1 for Breakdown)
17	P13894	REF	Lug Nut
18	34680B	4	Wheel, Rim (9 x 24)
19	P11688	4	Tire, 13.00 x 24 10 Ply
	P19043	-	Tire, 13.00 x 24 12 Ply
	P16443	-	Tire, 13.00 x 24 12 Ply Steelguard
20	P13673	4	Valve Stem
21	P01209	8	Nut Hx., 1"-8 GR 8
22	10731325	8	Washer, Flat, 77 I.D. x1.31O.D x .05 THK
23	P04613	4	Lockwasher, M20
24	10704352	4	Capscrew, Hx., M20-2.5 x 40mm C8.8
25	⑤66854A	1	Support Mount, Transmission (Replaces 36935A)
26	P01535	2	Nut Hx., 5/8"-18
27	P01363	2	Starwasher, 5/8"
28	P01585	3	Jam Nut, Hx., 5/8"-18
29	P01512	4	Nut Hx., 5/8"-11
30	P01314	4	Lockwasher, 5/8"

ITEM	PART NO.	QTY.	DESCRIPTION
31	P01408	4	Flatwasher, 5/8"
32	④39681A	1	Axle, Front (Includes Item 17) (Supersedes 38540A) (See Pages 1.4.1-1.10.1 for Breakdown)
<p>NOTES:</p> <ul style="list-style-type: none"> ① Not Required with Cummins Engines. ② Use 36938B for the Following Machines. 644B-37 (S/N 101-383), 644B-42 (S/N 101-119), 6K-37 (S/N 101-211), 6K-42 (S/N 101-105). ③ Use 35913A for Following Machines. 644B-37 (S/N 101-170), 6K-37 (S/N 101-144). ④ Use 35912A for Following Machines. 644B-37(S/N 101-170), 6K-37 (S/N 101-144). ⑤ For the Following Machines order Transmission Support Replacement Kit 66856B. 644B-37 (S/N 101-1213), 644B-42 (S/N 101-354), 6K-37 (S/N 101-488) & 6K-42 (S/N 101-178). Kit Includes: Transmission Support 66854B and Mounting Hardware Items 11 & 28-30 			
644B-37 S/N 101-			
644B-42 S/N 101-1261			
6K-37 S/N 101-			
6K-42 S/N 101-226			

644B
6K
844C
8K
1044C
10K
▼

DRIVE TRAIN GROUP ASSEMBLY

1.1.1



ITEM	PART NO.	QTY.	DESCRIPTION
1	P00941	8	Capscrew, Hx., 1"-8 x 7" GR 8
2	P01259	16	Flatwasher, 1" SAE - Hardened
3	35351B	1	Drive Shaft, Front (Includes Items 4, 5) (See Page 1.2.1 for Breakdown)
4	P00284	8	Capscrew, Hx., 3/8"-24 x 1 3/4" GR 8
5	P01359	8	Starwasher, 3/8"
6	①38112A	2	Spacer
7	P32961	2	Rubber Mount, Transmission
8	15616A	2	Snubbing Washer
9	P00694	2	Capscrew, Hx., 5/8"-18 x 5 1/2" GR 8
10	②38777B	1	Transmission Mount
11	P00605	4	Capscrew, Hx., 5/8"-11 x 2 1/4"
12	38370A	1	Transmission, 4 Speed (See Pages 1.38.1-1.49.1 for Breakdown)
13	36878B	1	Drive Shaft, Rear (Includes Items 14,15) (See Page 1.3.1 for Breakdown)
14	P00284	8	Capscrew, Hx., 3/8"-24 x 1 3/4" GR 8
15	P01359	8	Starwasher, 3/8"
16	③39684A	1	Axle, Rear (Includes Item 17) (Replaces 38440A) (See Pages 1.4.1-1.10.1 for Breakdown)
17	P13894	REF	Lug Nut
18	34680B	4	Wheel, Rim (9 x 24)
19	P11688	4	Tire, 13.00 x 24 10 Ply
	P19043	-	Tire, 13.00 x 24 12 Ply
	P16443	-	Tire, 13.00 x 24 12 Ply Steelguard
20	P13673	4	Valve Stem
21	P01209	8	Nut Hx., 1"-8 GR 8
22	10731325	8	Washer, Flat, 77 I.D. x1.31O.D x .05 THK
23	P04613	4	Lockwasher, M20
24	10704352	4	Capscrew, Hx., M20-2.5 x 40mm C8.8
25	⑤66854A	1	Support Mount, Transmission (Replaces 36935A)
26	P01535	2	Nut Hx., 5/8"-18
27	P01363	2	Starwasher, 5/8"
28	P01585	3	Jam Nut, Hx., 5/8"-18
29	P01512	4	Nut Hx., 5/8"-11

ITEM	PART NO.	QTY.	DESCRIPTION
30	P01314	4	Lockwasher, 5/8"
31	P01408	4	Flatwasher, 5/8"
32	④39683A	1	Axle, Front (Includes Item 17) (Replaces 38439A) (See Pages 1.4.1-1.10.1 for Breakdown)
<p>NOTES:</p> <p>① Not Required with Cummins Engines.</p> <p>② Use 36938B for the Following Machines. 844C-42 (S/N 101-281), 8K-42 (S/N 101-162,165).</p> <p>③ Use 38184A for Following Machines. 844C-42 (S/N 101-164), 8K-42 (S/N 101-124).</p> <p>④ Use 38183A for Following Machines. 844C-42 (S/N 101-164), 8K-42 (S/N 101-124).</p> <p>⑤ For the Following Machines order Transmission Support Replacement Kit 66856B. 844C-42 (S/N 101-1283) & 8K-42 (S/N 101-331). Kit Includes: Transmission Support 66854B (Item 24) and Mounting Hardware Items (11 & 28-30)</p>			
644B-42 S/N 1262-			
844C-42 S/N 101-			
6K-42 S/N 227-			
8K-42 S/N 101-			

644B
6K
844C
8K
1044C
10K
▼

DRIVE TRAIN GROUP ASSEMBLY

1.1.2

