



Illustrated Parts Manual

Model 4017

3121859

Revised
March 31, 2014



EFFECTIVITY PAGE

October 22, 2004 - A - Original Issue Of Manual

April 8, 2005 - B - Revised Manual

November 23, 2005 - C - Revised Manual

January 2, 2007 - D - Revised Manual

April 25, 2008 - E - Revised Manual

July 15, 2009 - F - Revised Manual

April 20, 2012 - G - Revised Manual

March 31, 2014 - H - Revised Manual

EFFECTIVITY PAGE

TABLE OF CONTENTS

FIGURE NO.	TITLE	PAGE NO.
SECTION 1 –		
FRAME & ATTACHING PARTS		1-1
1-1	Frame Shrouding & Attaching Parts, Right Side	1-2
1-2	Frame Shrouding & Attaching Parts, Left Side	1-6
1-3	Axle & Fender Installation	1-10
1-4	Outrigger Mounting	1-12
1-5	Outrigger Mounting with Platform	1-14
1-6	Outrigger Mounting Equipped W/LMIS	1-16
1-7	Hood Installation with Platform	1-18
SECTION 2 –		
BOOM		2-1
2-1	First Boom Section	2-2
2-2	Bearings, Pads, Spacers & Shims, (First Boom Section)	2-4
2-3	Second Boom Section	2-6
2-4	Bearings, Pads, Spacers & Shims, (Second Boom Section)	2-8
2-5	Third Boom Section	2-10
2-6	Bearings, Pads, Spacer & Shims, (Third Boom Section)	2-12
2-7	Fourth Boom Section	2-14
2-8	Bearings, Pads, Spacers & Shims, (Fourth Boom Section)	2-16
2-9	Quick Switch Assembly	2-18
SECTION 3 –		
ATTACHMENTS		3-1
3-1	Carriage Assembly	3-2
3-2	Buckets	3-4
3-3	Four In One Bucket	3-6
3-4	Fork Mounted Hook	3-8
3-5	Truss Boom	3-10
3-6	Side Shift Carriage	3-12
3-7	Fork Positioning Carriage Assembly	3-14
3-8	Fork Extension	3-16
3-9	Fork	3-18
3-10	Platform Assembly, Adapter & Pedestal	3-20
3-11	Platform Assembly, Base & Railings	3-22
3-12	Platform Assembly, Electrical	3-24
3-13	Platform Assembly, Miscellaneous	3-28
3-14	Concrete Ladle	3-30
3-15	Crane Hook	3-32
3-16	Adjustable Boom Truss (Australia)	3-34
SECTION 4 –		
ENGINE & ATTACHING PARTS		4-1
4-1	Engine Assembly	4-2

TABLE OF CONTENTS

FIGURE NO.	TITLE	PAGE NO.
4-2	Perkins Engine	4-4
4-3	Fuel Tank & Lines	4-6
4-4	Cooling System Installation	4-8
4-5	Air Filter Installation	4-10
4-6	Muffler Installation	4-12
4-7	AC Pump Installation	4-14
4-8	Four Speed Transmission - Converter Housing Group	4-16
4-9	Four Speed Transmission - Case and Plate Group	4-18
4-10	Four Speed Transmission - Torque Converter Group	4-20
4-11	Four Speed Transmission - Gear Group	4-22
4-12	Four Speed Transmission - Pump Drive Group	4-24
4-13	Four Speed Transmission - Charging Pump Group	4-26
4-14	Four Speed Transmission - Reverse Idler Group	4-28
4-15	Four Speed Transmission - Forward and Reverse Shaft Group	4-30
4-16	Four Speed Transmission - 3rd Shaft Group	4-32
4-17	Four Speed Transmission - First and Second Shaft Group	4-34
4-18	Four Speed Transmission - Output Shaft Group	4-36
4-19	Four Speed Transmission - Electric Control Group	4-38
4-20	Four Speed Transmission - Drive Plate Group	4-42
4-21	Four Speed Transmission - Drop Box Group	4-44
SECTION 5 –		
	DRIVE TRAIN	5-1
5-1	Front Axle Assembly	5-2
5-2	Front Axle - Central Housing & Steering	5-4
5-3	Front Axle - Differential	5-6
5-4	Front Axle - Hub Reduction	5-8
5-5	Front Axle - Brakes	5-12
5-6	Rear Axle Assembly	5-14
5-7	Rear Axle - Central Housing & Steering	5-16
5-8	Rear Axle - Differential	5-18
5-9	Rear Axle - Hub Reduction	5-20
5-10	Rear Axle - Brakes	5-24
5-11	Tire & Wheel Assembly	5-26
SECTION 6 –		
	CAB	6-1
6-1	Cab Assembly	6-2
6-2	Cab Interior Installation	6-6
6-3	Cab Door Assembly	6-8
6-4	Cab Windows	6-10
6-5	Wiper System Installation	6-12
6-6	Driver Seat Assembly Installation	6-14
6-7	Driver Seat	6-16
6-8	Air Circulation Installation	6-18

TABLE OF CONTENTS

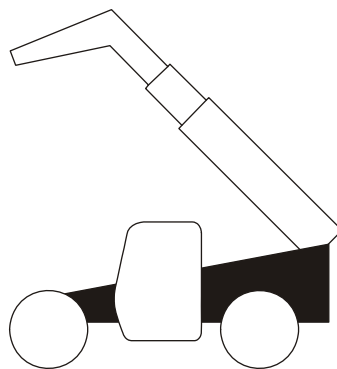
FIGURE NO.	TITLE	PAGE NO.
6-9	Air Conditioning Unit Installation	6-20
SECTION 7 –		
CONTROLS		7-1
7-1	Steering Column & Attaching Parts	7-2
7-2	Joystick Support Assembly	7-4
7-3	Accelerator Pedal Assembly	7-6
SECTION 8 –		
HYDRAULIC CIRCUITS		8-1
8-1	Hydraulic System	8-2
8-2	Steering Supply	8-4
8-3	Service/Park Brake	8-6
8-4	Lift Cylinder	8-10
8-5	Crowd Cylinder	8-14
8-6	Tilt & Tilt Compensating Cylinder	8-16
8-7	Auxiliary Function	8-18
8-8	Boom Hydraulics Assembly	8-20
8-9	Sway Cylinder	8-22
8-10	Stabilizer Cylinders	8-24
8-11	Hydraulic Kits	8-26
8-12	Boom Hydraulics with Platform	8-30
8-13	Boom Hydraulics Installation with Platform	8-32
8-14	Drive Pump to Main Valve with Platform	8-34
SECTION 9 –		
HYDRAULIC COMPONENTS		9-1
9-1	Lift Cylinder	9-2
9-2	Crowd Cylinder	9-6
9-3	Tilt Cylinder	9-8
9-4	Compensation Cylinder	9-10
9-5	Sway Cylinder	9-14
9-6	Stabilizer Cylinder	9-18
9-7	Fork Locking Cylinder	9-24
9-8	Main Control Valve	9-28
9-9	Engine Drive Pump	9-33
9-10	Hydraulic Tank Assembly	9-35
9-11	Return Filter	9-37
9-12	Auxiliary Power Pump	9-39
9-13	ERS Control Valve Assembly	9-41
SECTION 10 –		
ELECTRICAL		10-1
10-1	Head Light/Tail Light Assembly	10-2

TABLE OF CONTENTS

FIGURE NO.	TITLE	PAGE NO.
10-2	Electrical Installation, Engine	10-4
10-3	Electrical Installation, Gear & Valve	10-6
10-4	Electrical Installation, Cab	10-8
10-5	Electrical Installation, Accessories	10-12
10-6	Electrical System, Rear of Machine	10-14
10-7	Sensor Assembly	10-16
10-8	Electrical Installation, Cab with Platform	10-18
10-9	Electrical Installation on Boom with Platform	10-24
10-10	Sensor Assembly with Platform	10-26
10-11	Electric System with Platform	10-28
10-12	Display Panel	10-32
10-13	LMIS Installation	10-34
10-14	LMIS Audible Tower/Beacon Installation	10-38
10-15	LMIS Harness	10-40
10-16	Stabilizer Harness Equipped W/LMIS	10-42
SECTION 11 –		
DECALS		11-1
11-1	Frame & Boom Decals	11-2
11-2	Cab Decals	11-6
SECTION 12 –		
OPTIONS		12-1
12-1	Drivers Seat Installation, Air Suspension	12-2
12-2	Drivers Seat, Air Suspension	12-4
12-3	Front Cab Glass Shield	12-6
12-4	Trailer Coupling Kit	12-8
12-5	Site Hitch Assembly Kit	12-10
12-6	Draw Bar Coupling	12-12
12-7	Battery Switch	12-14
12-8	Ground Wire Installation	12-16
12-9	7-Pin Trailer Socket Installation	12-18
SECTION 13 –		
RECOMMENDED SPARE PARTS		13-1
SECTION 14 – PART NUMBER INDEX		14-1

SECTION 1

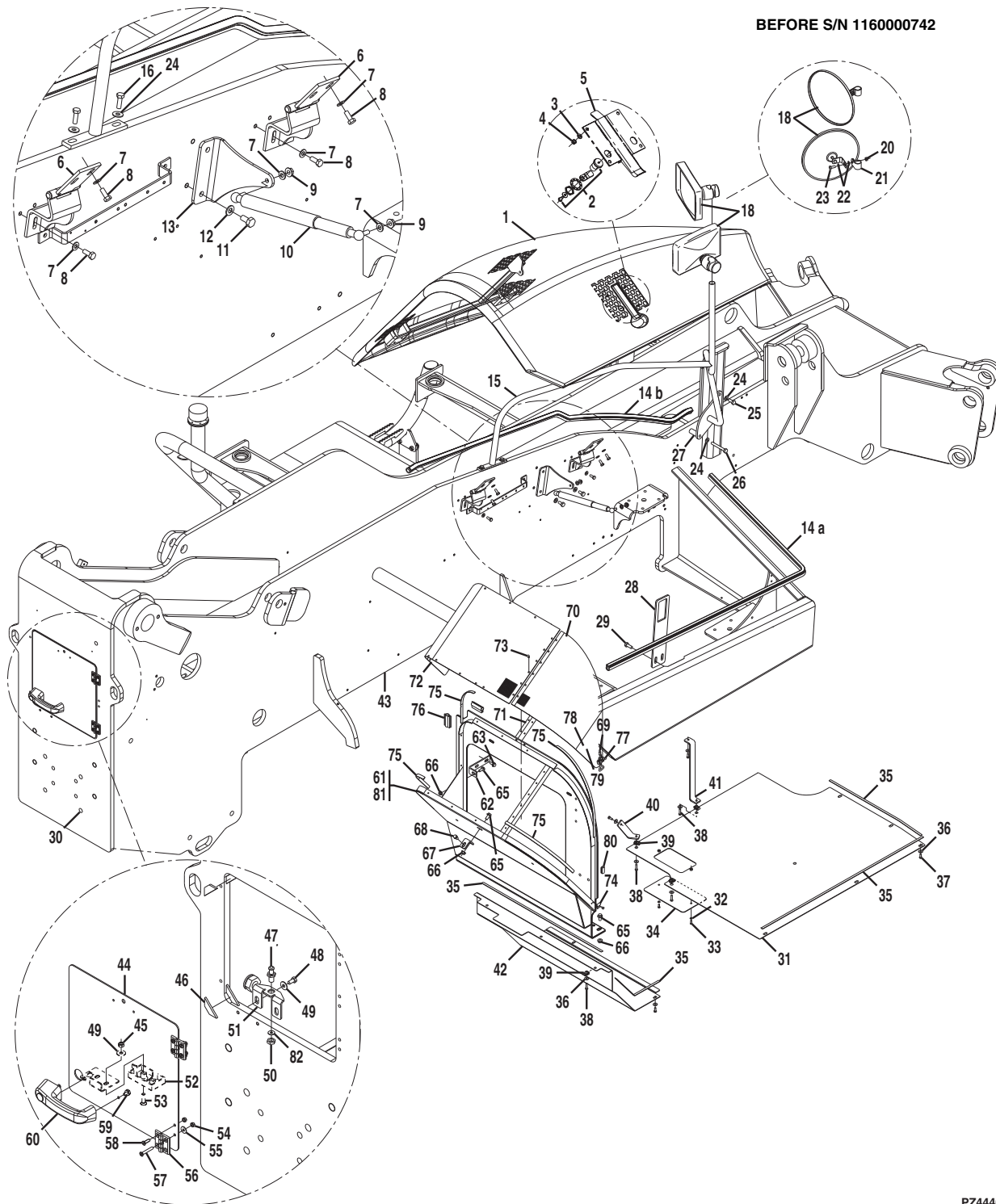
FRAME & ATTACHING PARTS





FRAME & ATTACHING PARTS

Figure 1-1 Frame Shrouding & Attaching Parts, Right Side



PZ4440



Figure 1-1 Frame Shrouding & Attaching Parts, Right Side

Item	Part Number	Qty.	Description	Rev.
1	0274487	1	ENGINE COVER, (includes items 2 thru 14)	G
2	8000801	1	LOCK	
3	4811700	3	FLAT WASHER, 6X1mm	
4	3290607	3	HEX LOCKNUT, 6X1mm	
5	8000382	1	HOOD LOCK	
6	4806433	2	HOOD HINGE	
7	4811900	8	FLAT WASHER, 8mm	
8	0760810	8	HEX HD CAPSCREW, 8-1.25X20mm, GR 8.8	
9	5220800	2	RIPP NUT, 8mm-48	
10	8000420	1	GAS SPRING	
11	0761010	2	HEX HD CAPSCREW, 10-1.50X20mm, GR 8.8	
12	4812000	2	FLAT WASHER, 10mm	
13	0903224	1	BRACKET	
14	2014226	AR	TRIM, (a = 2.10m; b = 1.65m)	
15	4340994	1	MIRROR MOUNT	
16	0760812	2	HEX HD CAPSCREW, 8-1.25X25mm, GR 8.8	
18		2	10" MIRROR, (Before S/N 1160000742), (no longer available, order 3140007)	
	3140007	2	RECTANGULAR MIRROR, (S/N 1160000742 & After)	
20	3290807	2	HEX LOCKNUT, 8mm-1.25, (Before S/N 1160000742)	
21	1321140	2	CLAMP, (Before S/N 1160000742)	
22	4811900	2	FLAT WASHER, 8mm, (Before S/N 1160000742)	
23	0760810	2	HEX HD CAPSCREW, 8-1.25X20mm, GR 8.8, (Before S/N 1160000742)	
24	4812000	5	FLAT WASHER, 10mm	
25	0761012	2	HEX HD CAPSCREW, 10-1.50X25mm, GR 8.8	
26	0701024	1	HEX HD CAPSCREW, 10-1.50X80mm, GR 8.8	
27	8000704	1	STEEL PIPE	
28	8001626	1	PLATE	
29	5201012	2	RIPP BOLT, 10-48X25mm	
30	8008721	12	PLASTIC CAP	
31	3380538	1	PROTECTING PANEL ASSY, (includes items 32 thru 34)	
32	4811600	2	FLAT WASHER, 5mm	
33	0700507	2	HEX HD CAPSCREW, 5X8X14mm, GR 8.8	
34	3380534	1	OIL DRAIN PANEL	
35	1898686	AR	TRIM	
36	5211702	14	RIPP WASHER, M6	
37	0760608	8	HEX HD CAPSCREW, 6-1.00X16mm, GR 8.8	
38	0760612	6	HEX HD CAPSCREW, 6-1.00X25mm, GR 8.8	
39	2966421	6	NUT HOLDER	
40	8002423	1	HOLDER	
41	4805896	1	ANGLE	
42	8004879	1	RADIATOR GUARD PLATE	
43	2360693	1	FRAME	
44	8002263	1	REAR COVER ASSY, (includes items 45 thru 60 and 82)	H
45	3290801	2	HEX NUT, 8mmX1.25	
46	909304	0.12m	TRIM	
47	8003293	1	PIN	
48	0760808	2	HEX HD CAPSCREW, 8-1.25X16mm, GR 8.8	
49	5211902	4	RIPP WASHER, 8mm	
50	3300497	1	RIPP NUT, 12X1mm	



FRAME & ATTACHING PARTS

Figure 1-1 Frame Shrouding & Attaching Parts, Right Side (Continued)

Item	Part Number	Qty.	Description	Rev.
51	8007430	1	HOLDER	
52	8004882	1	ROTARY LATCH LOCK	
53	1398385	2	SCREW, M6X40mm	
54	3290605	8	HEX LOCKNUT, 6mm	
55	5211702	4	RIPP WASHER, 6mm	
56	8006105	2	HINGE	
57	8006242	4	SCREW, M6X40mm	
58	0630576	4	FLAT HD CAPSCREW, M6X20mm	
59	5200605	2	RIPP BOLT, 6-36X10mm	
60	8006491	1	PUSH BUTTON HANDLE	
		Ref	KEY, (same key used for ignition), (see Figure 10-4 for details)	
61	0274108	1	AIR DUCT INSTALLATION, (without A/C), (includes items 62 thru 81)	E
	0274125	1	AIR DUCT INSTALLATION, (with A/C), (includes items 62 thru 81)	D
62	4806477	1	ANGLE	
63	5200810	2	RIPP BOLT, 8-48X20mm	
65	5201010	4	RIPP BOLT, 10-48X20mm	
66	5221000	4	RIPP NUT, 10mm	
67	8007467	1	HOLDER	
68	0761008	1	HEX HD CAPSCREW, 10-1.50X16mm, GR 8.8	
69	8003294	1	LOCK	
70	4803394	1	FLAP	
71	4806568	1	JOINT	
72	4802837	1	VENTILATOR	
73	3820019	22	POP RIVET	
74	8003295	1	LOCKING HOOK	
75	1898686	AR	TRIM	
76	3960927	AR	TRIM	
77	4010405	4	MACHINE SCREW	
78	3290405	4	HEX NUT, 4mm	
79	4811400	4	FLAT WASHER, 4mm	
80	935113	AR	TRIM	
81	8006452	1	RADIATOR MOUNTING SEAT, (without A/C)	
	4806604	1	RADIATOR MOUNTING SEAT, (with A/C)	
82	4812100	1	FLAT WASHER, 12mm	

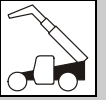


Figure 1-1 Frame Shrouding & Attaching Parts, Right Side (Continued)

Item	Part Number	Qty.	Description	Rev.



FRAME & ATTACHING PARTS

Figure 1-2 Frame Shrouding & Attaching Parts, Left Side

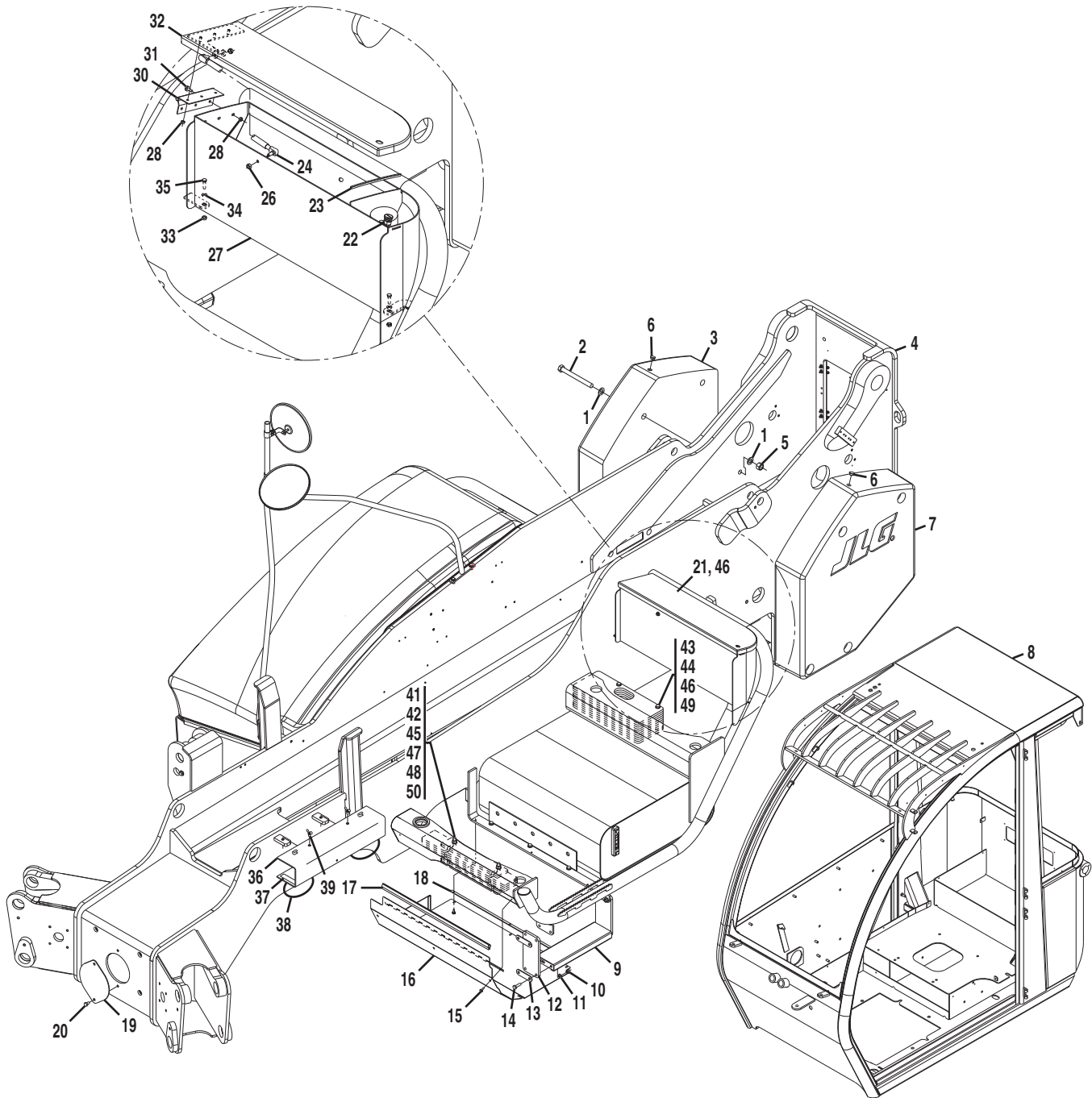




Figure 1-2 Frame Shrouding & Attaching Parts, Left Side

Item	Part Number	Qty.	Description	Rev.
1	4812500	16	FLAT WASHER, 20mm	
2	0702037	8	HEX HD CAPSCREW, 20-2.5X200mm, GR 8.8	
3	8008962	1	COUNTERWEIGHT, (right), (Before S/N 1160002169)	
	8005316	1	COUNTERWEIGHT, (right), (S/N 1160002169 & After)	
4		Ref	FRAME, (see Figure 1-1 for details)	
5	3292007	8	HEX LOCKNUT, M20	
6	8009883	2	PROTECTING CAP	
7	8008961	1	COUNTERWEIGHT, (left), (Before S/N 1160002169)	
	8005315	1	COUNTERWEIGHT, (left), (S/N 1160002169 & After)	
8		Ref	CAB, (see Figure 6-1 for details)	
9	80383311	1	STAIR TREAD	
10	3291007	8	HEX LOCKNUT, M10X1.5	
11	4812000	4	FLAT WASHER, 10mm	
12	4240168	2	STEP STRAP	
13	3575424	4	STRAP COVER PLATE	
14	0701015	8	HEX HD CAPSCREW, 1.25-7X4, GR 8.8	
15	5200608	6	RIPP BOLT, 6-36X16mm	
16	3380567	1	CAB BOTTOM SHIELD	
17	3960927	.722m	TRIM	
18	1898686	1.6m	TRIM	
19	3575579	1	COVER PLATE	
20	0761008	2	HEX HD CAPSCREW, 10-1.5X16mm, GR 8.8	
21	8001935	1	TOOL BOX ASSY, (includes items 22 thru 32)	G
22	8008701	1	LOCK	
	8008049	1	KEY	
23	914210	AR	RUBBER SEAL	
24	1001097296	1	GAS SPRING	
26	5220800	2	RIPP NUT, 8mm	
27	8002319	1	TOOL BOX	
28	5220600	6	RIPP NUT, M6	
30	8002332	1	HINGE	
31	5200608	3	RIPP BOLT, 6-36X16mm	
32	3380559	1	TOOL BOX COVER	
33	5220800	3	RIPP NUT, 8mm	
34	5211900	3	RIPP WASHER, 8mm	
35	0760810	3	HEX HD CAPSCREW, 8-1.25X25mm	
36	8004888	1	LIFTING SUPPORT SYSTEM, (includes items 37 thru 39)	
37	909304	AR	TRIM	
38	1784861	2	GASKET	
39	443630	2	WING SCREW	
40	0240064	1	WRENCH, (not shown), (stored in tool box)	
41	4821460	6	WEIGHT, 12X75X385mm	
42	4821461	3	WEIGHT, 12X90X565mm	
43	4821462	10	WEIGHT, 12X180X450mm	
44	3291005	2	HEX LOCKNUT, 10mm-1.50	
45	3291207	2	HEX LOCKNUT, 12mm-1.75	
46	5212000	4	RIPP WASHER, 10mm	
47	4812100	2	FLAT WASHER, 12mm	
48	4740550	2	FENDER WASHER, 12mm	



FRAME & ATTACHING PARTS

Figure 1-2 Frame Shrouding & Attaching Parts, Left Side (Continued)

Item	Part Number	Qty.	Description	Rev.
49	0701032	2	HEX HD CAPSCREW, 10X150mm, GR 8.8	
50	0701232	2	HEX HD CAPSCREW, 12X150mm, GR 8.8	



Figure 1-2 Frame Shrouding & Attaching Parts, Left Side (Continued)

Item	Part Number	Qty.	Description	Rev.



FRAME & ATTACHING PARTS

Figure 1-3 Axle & Fender Installation

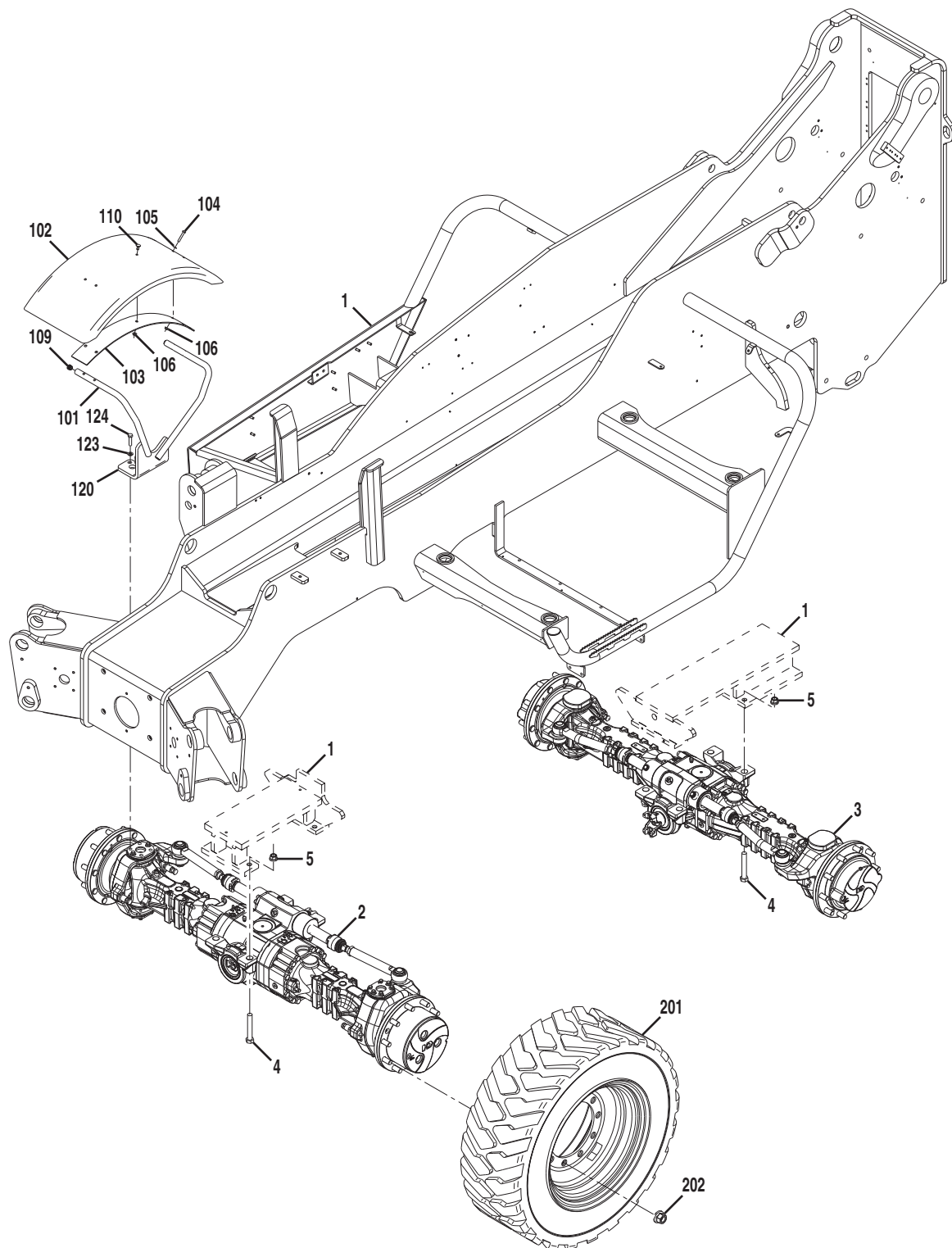




Figure 1-3 Axle & Fender Installation

Item	Part Number	Qty.	Description	Rev.
	0273827	Ref	FRAME INSTALLATION, (includes items 1 thru 17)	G
1		Ref	FRAME, (see Figure 1-1 for details)	
2		Ref	FRONT AXLE, (see Figure 5-1 for details)	
3		Ref	REAR AXLE, (see Figure 5-6 for details)	
4	0630574	8	HEX HD CAPSCREW, 20-1.5X130mm	
5	3300478	8	WHEEL NUT, M20X1.5	
	8007736	1	FENDER INSTALLATION, (includes items 101 thru 124)	F
101	8010525	2	FENDER SUPPORT, (left)	
	8010526	2	FENDER SUPPORT, (right)	
102	8010519	4	FENDER	
103	8010524	4	SUPPORT PLATE	
104	0700818	16	HEX HD CAPSCREW, 0.875-9X8.00	
105	4811900	16	FLAT WASHER, 8mm	
106	5220800	20	RIPP NUT, 8mm	
109	8006580	8	HOLDER	
110	328027	4	MUSHROOM HD BOLT	
120	4804522	2	FENDER ASSY, RIGHT, (includes items 101 thru 110)	
121	4804511	2	FENDER ASSY, LEFT, (includes items 101 thru 110)	
123	4740532	16	FLAT WASHER	
124	0630571	16	HEX HD CAPSCREW	
201		Ref	TIRE & WHEEL ASSY, (see Figure 5-11 for details)	
202	2478782	40	FLANGED BALL NUT	



FRAME & ATTACHING PARTS

Figure 1-4 Outrigger Mounting

