



---

# ***Illustrated Parts Manual***

## ***Models***

***3706PS, 3707PS,  
4014PS, 4017PS***

## ***Agrovector***

***33.7, 37.6, 37.7***

3706PS, 3707PS & 4014PS  
SN 1160006593 to Present

4017PS  
SN 1160006867 to Present including  
1160006594, 1160006604, 1160006748,  
1160006752, 1160006755, 1160006756

**31200722**

*Revised*  
November 14, 2014





## EFFECTIVITY PAGE

December 4, 2012 - A - Original Issue of Manual

February 26, 2013 - B - Revised Manual

May 29, 2013 - C - Revised Manual

July 30, 2013 - D - Revised Manual

September 27, 2013 - E - Revised Manual

January 31, 2013 - F - Revised Manual

November 14, 2014 - G - Revised Manual



## General Information

---

### 1. MACHINE IDENTIFICATION

Machines are identified by model & in some cases a combination of model, serial number (S/N) or regional standard (CE, AUS, ANSI). Components may also be identified by S/N or manufacturer. Common components that may be identified by these characteristics are attachments, engine, transmission & hydraulic components.

### 2. PARTS MANUAL ORGANIZATION

Product information in this manual is organized under section titles. Frame & Attaching Parts, Drive Train & Electrical are a few examples. Each section is organized by Figure & page number. The information within the Figure is then organized by item number, part number, description & corresponding illustration(s).

### 3. TABLE OF CONTENTS

A table of contents (TOC) is found toward the beginning of the manual. Figure number, description & page number are provided for quick reference to the page containing the related information.

### 4. RECOMMENDED SPARE PARTS

The Recommended Spare Parts, located near the end of the manual, references most frequently used maintenance parts.

### 5. PART NUMBER INDEX

A numerical index listing all part numbers & the corresponding page number(s) appears at the back of the manual.

### 6. NON-SERVICED PARTS

In some instances it is necessary to display non-serviced parts, assemblies or installations. In the case of assemblies & installations there will be a Ref in the Qty column & a note after the item description stating what is available for service within. In the case of parts that are not available for service within assemblies or components there will be a NSS (Not Sold Separately) listed in the part number column of the manual.

### 7. PARTS LIST ITEM NUMBERS

Numbers shown in the Item column correspond to numbers used in the associated illustration(s). Item numbers which are missing from sequence & are not shown in the illustration(s) are not used on that page.

### 8. INDENTED PART DESCRIPTION

An indented part description is included in the item under which it is indented.

### 9. ABBREVIATIONS & SYMBOLS

AC .....	Air Conditioning	LB .....	Pound
ANSI .....	American National Standards Institute	LH .....	Left Hand
AR .....	As Required	LS .....	Low Sulfur
ASME .....	American Society of Mechanical Engineers	MAX .....	Maximum
ASSY .....	Assembly	MM .....	Millimeter
AUS .....	Australia	N .....	Newton
AUX .....	Auxiliary	NA .....	Not Applicable
CE .....	European Conformity	NLA .....	No Longer Available
DIA .....	Diameter	NSS .....	Not Sold Separately
EURO .....	European	OD .....	Outside Diameter
FT .....	Foot	OZ .....	Ounce
GA .....	Gauge	P/N .....	Part Number
GR .....	Grade	QTY .....	Quantity
HD .....	Head	REF .....	Reference
HYD .....	Hydraulic	REQ .....	Required
ID .....	Inside Diameter	RH .....	Right Hand
IN .....	Inch	S/N .....	Serial Number
ISO .....	International Organization for Standards	SAE .....	Society of Automotive Engineers
ITSDF .....	Industrial Truck Standards Development Foundation	STD .....	Standard
KG .....	Kilogram	ULS .....	Ultra Low Sulfur
kW .....	Kilowatt	V .....	Volt

### 10. ILLUSTRATION REFERENCE LETTERS

When necessary, illustrations may contain reference letters that are intended to track information from one point to another in the illustration such as harnesses & hoses or any other information that has been separated in the illustration.

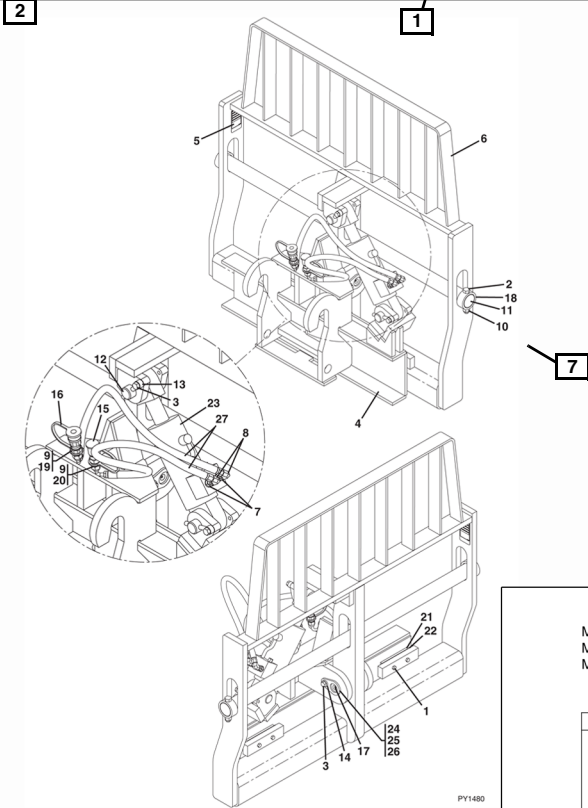
**Note:** Due to continuous product improvements, JLG Industries, Inc. reserves the right to make specification changes without prior notification. Contact JLG Industries, Inc. for updated information.



ATTACHMENTS

Model S/N 0160037799 & After  
Model S/N 0160037798 & After  
Model S/N 0160037793 & After

Figure 3-3 Side Tilt Carriage



3-10

Model Designation

1

7

6

ATTACHMENTS



Model S/N 0160037799 & After  
Model S/N 0160037798 & After  
Model S/N 0160037793 & After

Figure 3-3 Side Tilt Carriage

Item	Part Number	Qty.	Description	Rev.
	1170054	1	50 IN SIDE TILT CARRIAGE, (includes all items)	
	1001101956	1	60 IN SIDE TILT CARRIAGE, (includes all items)	C
	1170057	1	72 IN SIDE TILT CARRIAGE, (includes all items)	C
1	0641612	4	HEX HD CAPSCREW, 3/8-16X1-1/2	
2	0642032	2	HEX HD CAPSCREW, 5/8-11X4	
3	0681810	3	HEX HD CAPSCREW, 1/2-13X1-1/4	
4	NSS	1	CARRIAGE BASE	
5	NSS	1	S/N PLATE	
6	NSS	1	CARRIAGE, SIDE TILT	
7	2110606	2	CONNECTOR	
8	2172106	2	CONNECTOR, 90 DEGREES	
9	2110808	2	CONNECTOR	
10	3300240	2	LOCK NUT, 5/8-11	
11	3423275	1	50 IN FORK PIN	
	3423242	1	60 IN FORK PIN	
	3423276	1	72 IN FORK PIN	
12	3423307	2	PIN	
13	3841203	2	KEEPER	
14	4891800	1	WASHER, 1/2	
15	8420053	1	DUST CAP	
16	8420055	1	DUST PLUG	
17	88671001	1	GREASE FITTING	
18	9020003	2	COLLAR	
19	91403413	1	CONNECTOR	
20	91403414	1	CONNECTOR	
21	1001090063	2	WEAR PAD	
22	1001090064	A/R	SHIM	
23	Ref		HYDRAULIC CYLINDER, (see Figure 9-12 for details)	
24	1001090140	1	BEARING	
25	1001099113	1	PIN	
26	1001099115	2	SLEEVE	
27	1001102378	2	HOSE ASSY, 3/8X39	

XXXXXXX

Model Designation

3-11

# TABLE OF CONTENTS

SECTION 1 - FRAME AND ATTACHING PARTS.....	9
FIGURE 1-1. FRAME AND ATTACHING PARTS .....	10
FIGURE 1-2. COVERS.....	16
FIGURE 1-3. OUTRIGGERS.....	20
FIGURE 1-4. LICENSE PLATE INSTALLATION.....	22
FIGURE 1-5. RETRIEVAL HITCH.....	26
FIGURE 1-6. PIN HITCH, AUTO HITCH AND PITON FRAME-AUTO HITCH .....	28
FIGURE 1-7. PIN HITCH - CUNA C AND CUNA D2.....	30
FIGURE 1-8. HYDRAULIC HITCH.....	32
FIGURE 1-9. PIN HITCH - FIXED POSITION CEE 12T.....	34
SECTION 2 - BOOM.....	37
FIGURE 2-1. BOOM INSTALLATION.....	38
FIGURE 2-2. BOOM INSTALLATION.....	42
FIGURE 2-3. BOOM INSTALLATION.....	44
FIGURE 2-4. FIRST BOOM SECTION.....	48
FIGURE 2-5. FIRST BOOM SECTION.....	50
FIGURE 2-6. FIRST BOOM SECTION.....	52
FIGURE 2-7. SECOND BOOM SECTION.....	54
FIGURE 2-8. SECOND BOOM SECTION.....	56
FIGURE 2-9. SECOND BOOM SECTION.....	58
FIGURE 2-10. THIRD BOOM SECTION.....	60
FIGURE 2-11. THIRD BOOM SECTION.....	62
FIGURE 2-12. FOURTH BOOM SECTION.....	64
FIGURE 2-13. EXTEND CHAINS.....	66
FIGURE 2-14. EXTEND CHAINS.....	68
FIGURE 2-15. RETRACT CHAINS.....	70
FIGURE 2-16. RETRACT CHAINS.....	72
FIGURE 2-17. MANUAL QUICK ATTACH.....	74
FIGURE 2-18. MANUAL QUICK ATTACH.....	76
FIGURE 2-19. HYDRAULIC QUICK ATTACH.....	78
FIGURE 2-20. HYDRAULIC QUICK ATTACH.....	80
FIGURE 2-21. JD QUICK ATTACH.....	82
FIGURE 2-22. JCB MANUAL QUICK ATTACH.....	84
FIGURE 2-23. JCB HYDRAULIC QUICK ATTACH.....	86
FIGURE 2-24. MANITOU MANUAL QUICK ATTACH.....	88
FIGURE 2-25. MANITOU HYDRAULIC QUICK ATTACH.....	90
FIGURE 2-26. MANUAL QUICK ATTACH INSTALLATION, (IF EQUIPPED WITH PLATFORM).....	92
SECTION 3 - ATTACHMENTS.....	95
FIGURE 3-1. CARRIAGE ASSEMBLY.....	96
FIGURE 3-2. SIDE SHIFT CARRIAGE ASSEMBLY.....	98
FIGURE 3-3. FORK TINES.....	100
FIGURE 3-4. FORK POSITIONING CARRIAGE W/FORKS.....	102
FIGURE 3-5. FIXED PLATFORM INSTALLATION.....	104
FIGURE 3-6. EXTENDABLE PLATFORM INSTALLATION.....	108
FIGURE 3-7. EXTENDABLE PLATFORM ASSEMBLY.....	112
FIGURE 3-8. CONSOLE BOX ASSEMBLY.....	114
FIGURE 3-9. FORK MOUNTED HOOK.....	118
FIGURE 3-10. CRANE HOOK.....	120
FIGURE 3-11. BUCKETS.....	122
FIGURE 3-12. MULTI-PURPOSE BUCKETS.....	124
FIGURE 3-13. MANURE BUCKET.....	126
FIGURE 3-14. CONCRETE BUCKET.....	128
FIGURE 3-15. CONCRETE LADLE.....	130
FIGURE 3-16. TRUSS BOOMS.....	132
SECTION 4 - ENGINE AND ATTACHING PARTS.....	135
FIGURE 4-1. ENGINE INSTALLATION.....	136
FIGURE 4-2. DEUTZ ENGINE.....	140
FIGURE 4-3. DEUTZ ENGINE.....	142
FIGURE 4-4. FUEL TANK AND LINES.....	144

# TABLE OF CONTENTS

FIGURE 4-5. RADIATOR INSTALLATION.....	148
FIGURE 4-6. AIR CLEANER INSTALLATION .....	154
FIGURE 4-7. EXHAUST INSTALLATION .....	156
FIGURE 4-8. EXHAUST INSTALLATION .....	160
SECTION 5 - DRIVE TRAIN .....	163
FIGURE 5-1. DRIVE TRAIN COMPONENTS .....	164
FIGURE 5-2. FRONT AXLE ASSEMBLY .....	168
FIGURE 5-3. FRONT AXLE - HOUSING .....	170
FIGURE 5-4. FRONT AXLE - HOUSING .....	172
FIGURE 5-5. FRONT AXLE - SWIVEL HOUSING AND STEERING CYLINDER .....	174
FIGURE 5-6. FRONT AXLE - BEVEL GEAR SET .....	176
FIGURE 5-7. FRONT AXLE - DIFFERENTIAL .....	178
FIGURE 5-8. FRONT AXLE - DOUBLE U-JOINT .....	180
FIGURE 5-9. FRONT AXLE - BRAKES .....	182
FIGURE 5-10. FRONT AXLE - WHEEL HUB.....	184
FIGURE 5-11. FRONT AXLE - FINAL REDUCTION.....	186
FIGURE 5-12. FRONT AXLE - BRAKE CALIPER .....	188
FIGURE 5-13. REAR AXLE ASSEMBLY .....	190
FIGURE 5-14. REAR AXLE - AXLE HOUSING .....	192
FIGURE 5-15. REAR AXLE - SWIVEL HOUSING AND STEERING CYLINDER .....	194
FIGURE 5-16. REAR AXLE - BEVEL GEAR SET .....	196
FIGURE 5-17. REAR AXLE - DIFFERENTIAL .....	198
FIGURE 5-18. REAR AXLE - DOUBLE U-JOINT .....	200
FIGURE 5-19. REAR AXLE - WHEEL HUB.....	202
FIGURE 5-20. REAR AXLE - FINAL REDUCTION .....	204
FIGURE 5-21. TRANSMISSION .....	206
FIGURE 5-22. TRANSFER GEARBOX ASSEMBLY .....	208
FIGURE 5-23. TORQUE CONVERTER AND DRIVE .....	210
FIGURE 5-24. GEARS AND BEARINGS .....	212
FIGURE 5-25. 1ST/2ND CLUTCH SHAFT.....	214
FIGURE 5-26. INPUT SHAFT .....	216
FIGURE 5-27. FORWARD HIGH/3RD CLUTCH SHAFT .....	218
FIGURE 5-28. ANCILLARY COMPONENTS .....	220
FIGURE 5-29. FENDER GROUP.....	224
FIGURE 5-30. REMOTE GREASE SYSTEM INSTALLATION .....	226
FIGURE 5-31. TIRES AND WHEEL INSTALLATION .....	230
FIGURE 5-32. FRONT AXLE ASSEMBLY, (4014PS) (HYDRAULIC PARK BRAKE) .....	234
FIGURE 5-33. FRONT AXLE ASSEMBLY, (4017PS) (HYDRAULIC PARK BRAKE) .....	248
FIGURE 5-34. REAR AXLE ASSEMBLY, (4014PS) (HYDRAULIC PARK BRAKE) .....	262
FIGURE 5-35. REAR AXLE ASSEMBLY, (4017PS) (HYDRAULIC PARK BRAKE) .....	276
FIGURE 5-36. STEERING ARM ASSY.....	290
FIGURE 5-37. STEERING ARM ASSY.....	292
FIGURE 5-38. STEERING CYLINDER .....	294
FIGURE 5-39. STEERING CYLINDER .....	296
FIGURE 5-40. STEERING CYLINDER .....	298
FIGURE 5-41. BEVEL GEAR SET .....	300
FIGURE 5-42. DIFFERENTIAL KIT.....	302
FIGURE 5-43. DOUBLE JOINT .....	304
FIGURE 5-44. DOUBLE JOINT .....	306
FIGURE 5-45. WHEEL HUB KIT.....	308
FIGURE 5-46. WHEEL HUB KIT.....	310
SECTION 6 - CAB .....	313
FIGURE 6-1. CAB INSTALLATION.....	314
FIGURE 6-2. CAB ASSEMBLY.....	320
FIGURE 6-3. CAB DOOR .....	324
FIGURE 6-4. INTERIOR INSTALLATION .....	328
FIGURE 6-5. WIPER INSTALLATIONS .....	330
FIGURE 6-6. SEAT ASSEMBLIES .....	334
FIGURE 6-7. HEATER INSTALLATION.....	336
FIGURE 6-8. AIR CONDITIONING INSTALLATION.....	340
SECTION 7 - CONTROLS.....	345



# TABLE OF CONTENTS

FIGURE 7-1. BRAKE.....	346
FIGURE 7-2. HAND BRAKE.....	348
FIGURE 7-3. ACCELERATOR.....	350
FIGURE 7-4. STEERING COLUMN.....	352
FIGURE 7-5. BOOM JOYSTICK.....	354
SECTION 8 - HYDRAULIC CIRCUITS.....	357
FIGURE 8-1. SUPPLY CIRCUIT.....	358
FIGURE 8-2. SUPPLY CIRCUIT.....	362
FIGURE 8-3. DUMP CIRCUIT.....	366
FIGURE 8-4. DUMP CIRCUIT.....	370
FIGURE 8-5. STEER SELECT CIRCUIT.....	374
FIGURE 8-6. STEER SELECT CIRCUIT.....	376
FIGURE 8-7. SERVICE BRAKE CIRCUIT.....	378
FIGURE 8-8. SERVICE BRAKE CIRCUIT WITH BOOM SUSPENSION.....	380
FIGURE 8-9. LIFT CYLINDER CIRCUIT.....	382
FIGURE 8-10. LIFT CYLINDER CIRCUIT.....	384
FIGURE 8-11. LIFT CYLINDER CIRCUIT.....	386
FIGURE 8-12. EXTEND/RETRACT CYLINDER CIRCUIT.....	388
FIGURE 8-13. EXTEND/RETRACT CYLINDER CIRCUIT.....	390
FIGURE 8-14. EXTEND/RETRACT CYLINDER CIRCUIT.....	392
FIGURE 8-15. TILT AND TILT COMPENSATION CYLINDER CIRCUIT.....	394
FIGURE 8-16. TILT AND TILT COMPENSATION CYLINDER CIRCUIT.....	396
FIGURE 8-17. TILT AND TILT COMPENSATION CYLINDER CIRCUIT.....	398
FIGURE 8-18. AUXILIARY HYDRAULIC CIRCUIT.....	402
FIGURE 8-19. AUXILIARY HYDRAULIC CIRCUIT.....	406
FIGURE 8-20. AUXILIARY HYDRAULIC CIRCUIT.....	408
FIGURE 8-21. FRAME LEVEL AND OUTRIGGER.....	410
FIGURE 8-22. TRAILER BRAKES.....	412
FIGURE 8-23. TRAILER BRAKES.....	416
FIGURE 8-24. TRAILER BRAKES.....	418
SECTION 9 - HYDRAULIC COMPONENTS.....	421
FIGURE 9-1. LIFT CYLINDER AND HARDWARE.....	422
FIGURE 9-2. LIFT CYLINDER AND HARDWARE.....	424
FIGURE 9-3. LIFT CYLINDER AND HARDWARE.....	426
FIGURE 9-4. EXTEND/RETRACT CYLINDER AND HARDWARE.....	428
FIGURE 9-5. EXTEND/RETRACT CYLINDER AND HARDWARE.....	430
FIGURE 9-6. EXTEND/RETRACT CYLINDER AND HARDWARE.....	432
FIGURE 9-7. TILT CYLINDER AND HARDWARE.....	434
FIGURE 9-8. TILT CYLINDER AND HARDWARE.....	436
FIGURE 9-9. COMPENSATION CYLINDER AND HARDWARE.....	438
FIGURE 9-10. COMPENSATION CYLINDER AND HARDWARE.....	440
FIGURE 9-11. FRAME LEVEL CYLINDER AND HARDWARE.....	442
FIGURE 9-12. OUTRIGGER CYLINDER AND HARDWARE.....	444
FIGURE 9-13. QUICK ATTACH CYLINDER.....	446
FIGURE 9-14. MAIN CONTROL VALVE.....	448
FIGURE 9-15. MAIN CONTROL VALVE.....	452
FIGURE 9-16. DIVERTER VALVE.....	456
FIGURE 9-17. STEERING SELECT VALVE.....	458
FIGURE 9-18. PISTON PUMP.....	460
FIGURE 9-19. HYDRAULIC TANK.....	462
FIGURE 9-20. COMBINATION VALVE.....	464
FIGURE 9-21. TRAILER BRAKE VALVE.....	466
FIGURE 9-22. TRAILER BRAKE VALVE.....	468
FIGURE 9-23. DYNAMIC SELECT VALVE.....	470
FIGURE 9-24. OUTRIGGER MAIN CONTROL VALVE.....	472
FIGURE 9-25. ACTUATOR ASSEMBLY.....	474
SECTION 10 - ELECTRICAL.....	477
FIGURE 10-1. ENGINE COMPARTMENT ELECTRICAL INSTALLATION.....	478
FIGURE 10-2. CAB ELECTRICAL INSTALLATION.....	482
FIGURE 10-3. BOOM AND FRAME ELECTRICAL INSTALLATION.....	486
FIGURE 10-4. CAB SWITCHES.....	492

# TABLE OF CONTENTS

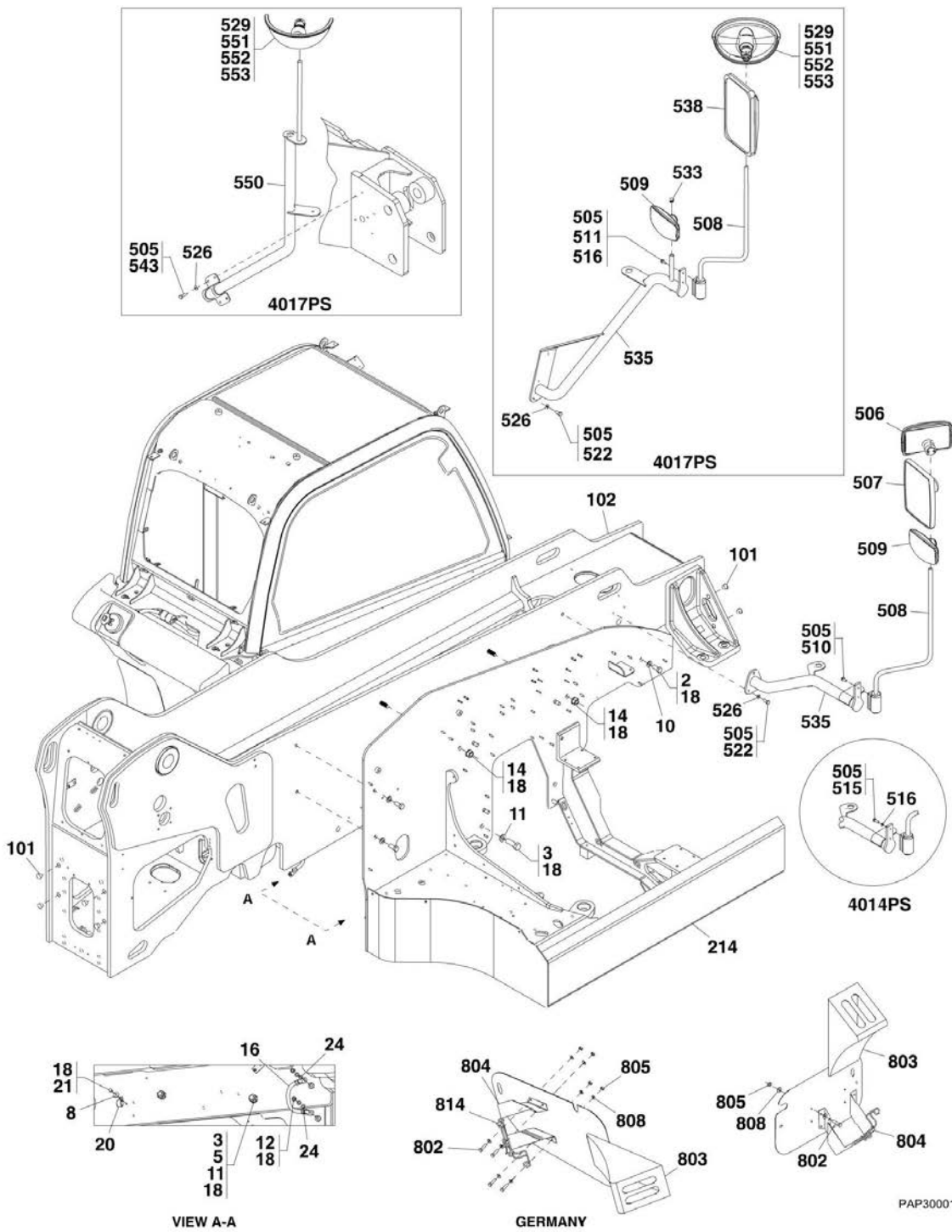
FIGURE 10-5. WORKLIGHT INSTALLATIONS .....	494
FIGURE 10-6. DRIVING LIGHTS .....	496
FIGURE 10-7. DRIVING LIGHTS .....	500
FIGURE 10-8. ENGINE BAY HARNESS .....	502
FIGURE 10-9. TRANSMISSION HARNESS .....	508
FIGURE 10-10. CAB FLOOR HARNESS .....	510
FIGURE 10-11. CAB ROOF HARNESS .....	518
FIGURE 10-12. BOOM HARNESS .....	520
FIGURE 10-13. BOOM LIGHT HARNESS .....	522
FIGURE 10-14. FRONT FRAME HARNESS .....	524
FIGURE 10-15. FRONT FRAME HARNESS .....	526
FIGURE 10-16. REAR FRAME HARNESS .....	528
FIGURE 10-17. RIDE AND FLOAT CHASSIS SIDE HARNESS .....	530
FIGURE 10-18. RIDE AND FLOAT CAB HARNESS .....	532
FIGURE 10-19. RIDE AND FLOAT CONTROLLER HARNESS .....	534
FIGURE 10-20. TOW HITCH HARNESS .....	536
FIGURE 10-21. TRAILER BRAKE CAB HARNESS, ITALIAN .....	538
FIGURE 10-22. TRAILER BRAKE CHASSIS HARNESS, ITALIAN .....	540
FIGURE 10-23. A/C HARNESS .....	542
FIGURE 10-24. BOOM EXTENSION HARNESS .....	544
FIGURE 10-25. HEADLIGHT EXTENSION HARNESS .....	546
FIGURE 10-26. LIGHT EXTENSION HARNESS .....	548
FIGURE 10-27. WORKLIGHT HARNESS .....	550
FIGURE 10-28. CAB AUXILIARY POWER HARNESS .....	552
FIGURE 10-29. PLATFORM BOOM HARNESS .....	554
FIGURE 10-30. PLATFORM BOOM HARNESS .....	556
FIGURE 10-31. DUAL SEAT SWITCH HARNESS .....	558
SECTION 11 - DECALS .....	561
FIGURE 11-1. CAB AND FRAME DECALS .....	562
FIGURE 11-2. BOOM DECALS .....	570
SECTION 12 - RECOMMENDED SPARE PARTS .....	573
FIGURE 12-1. RECOMMENDED SPARE PARTS .....	574
PART NUMBER INDEX .....	577

# SECTION 1 - FRAME AND ATTACHING PARTS

## SECTION 1 - FRAME AND ATTACHING PARTS

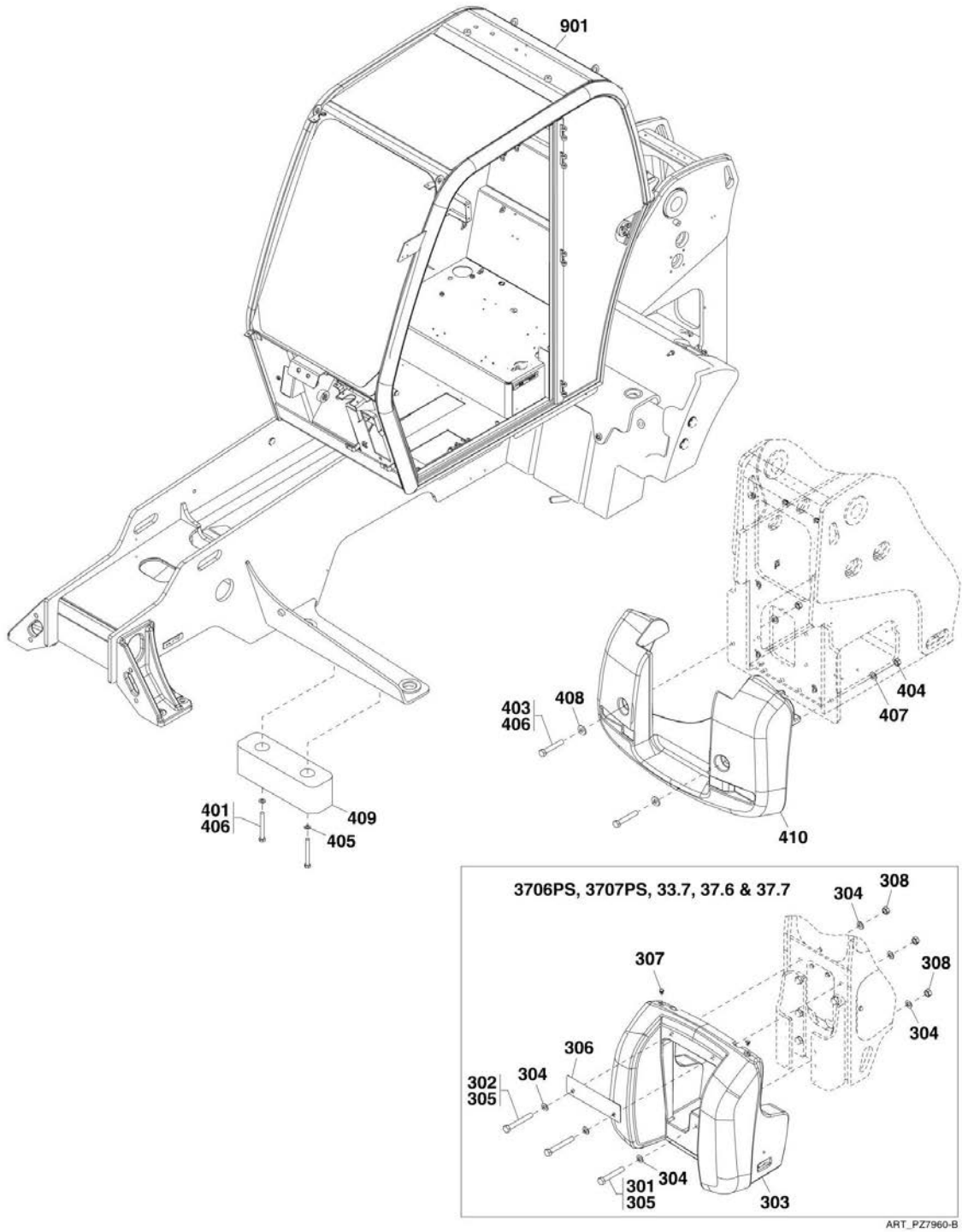
# SECTION 1 - FRAME AND ATTACHING PARTS

## FIGURE 1-1. FRAME AND ATTACHING PARTS



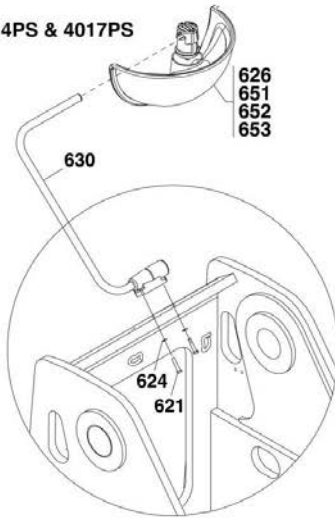
PAP30001

# SECTION 1 - FRAME AND ATTACHING PARTS

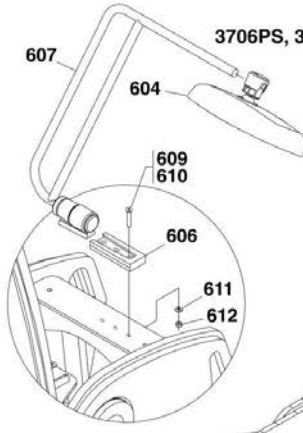


# SECTION 1 - FRAME AND ATTACHING PARTS

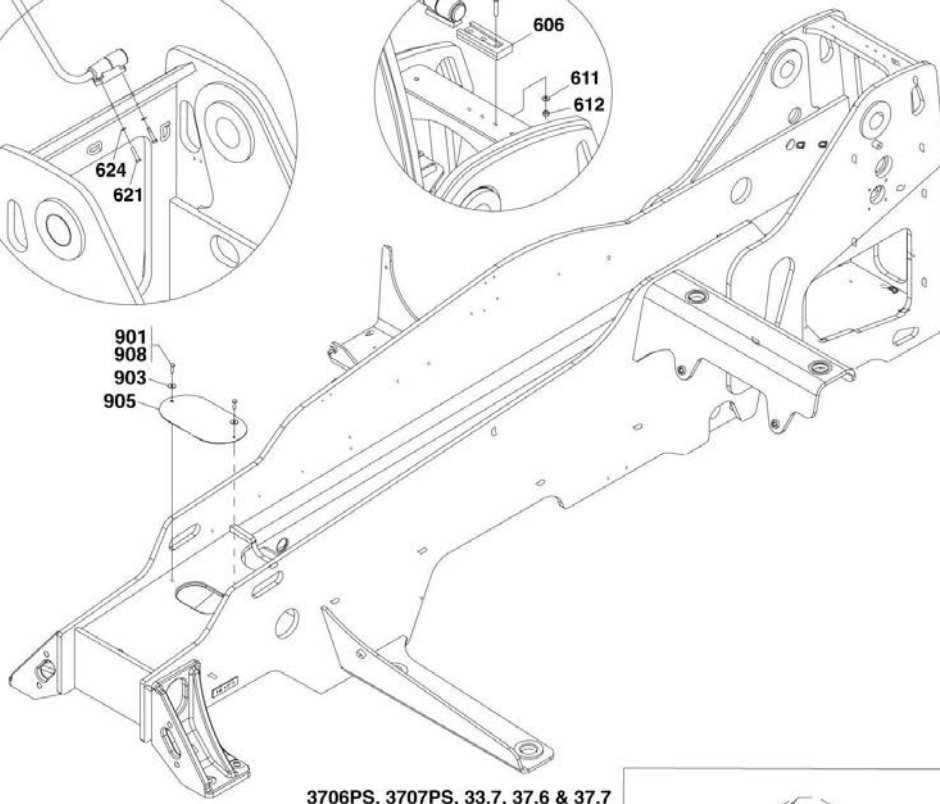
4014PS & 4017PS



3706PS, 3707PS, 33.7, 37.6 & 37.7

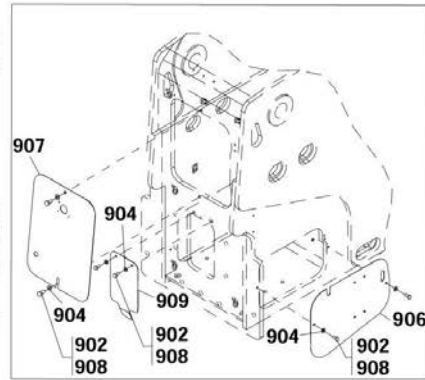
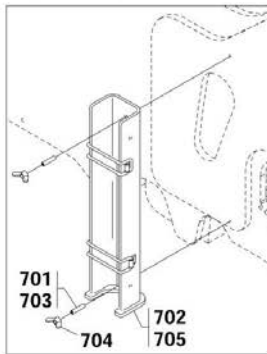
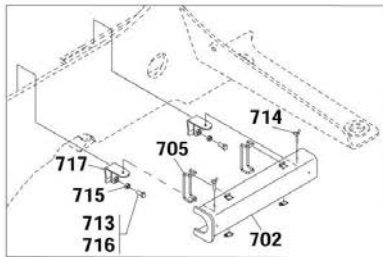


901  
908  
903  
905



3706PS, 3707PS, 33.7, 37.6 & 37.7

4014PS & 4017PS



ART\_PAP32990-B

# SECTION 1 - FRAME AND ATTACHING PARTS

## FIGURE 1-1. FRAME AND ATTACHING PARTS

ITEM	PART NUMBER	QTY	DESCRIPTION	REV
	1001128451	Ref	ENGINE POD TO FRAME INSTALLATION, (not available to order, see items 2 thru 24 for service)	D
2	0761615	3	HEX HD CAPSCREW, M16X35, GR8.8	
3	0762020	4	HEX HD CAPSCREW, M20X60, GR8.8	
5	3292001	4	HEX NUT, M20X2-1/2	
8	4811902	1	WASHER, 8mm	
10	4812300	3	WASHER, 16mm	
11	4812500	8	WASHER, 20mm	
12	5221000	2	RIPP NUT, 10mm	
14	1001004210	2	HEX NUT	
16	1001009038	1	EARTH STRAP	
18	1001095650	AR	LOCTITE 243	
20	1001100319	1	CLIP	
21	0760810	1	HEX HD CAPSCREW, M8X20, GR8.8	
24	4812000	4	WASHER, 10mm	
101	1001091126	AR	BLACK PLUG	
102	N.S.S.	1	FRAME WELDMENT	
214	1001122552	1	ENGINE FRAME	
	1001145694	Ref	COUNTERWEIGHT INSTALLATION, (3706PS, 3707PS, 37.6 & 37.7), (not available to order, see items 301 thru 308 for service)	B
301	0712030	1	HEX HD CAPSCREW, M20X130, GR10.9	
302	0712032	2	HEX HD CAPSCREW, M20X150, GR10.9	
303	1001142488	1	COUNTERWEIGHT	
304	4812500	6	WASHER, 20mm	
305	1001095650	AR	LOCTITE 243	
306	1001105127BL	1	COUNTERWEIGHT PLATE	
307	1001096914	2	LAMP BRACKET CAP	
308	3332011	3	HEX NUT, M20X2-1/2	
	1001145695	Ref	COUNTERWEIGHT INSTALLATION, (4014PS), (not available to order, see items 401 thru 410 for service)	B
	1001145696	Ref	COUNTERWEIGHT INSTALLATION, (4017PS), (not available to order, see items 403, 404, 406 thru 408 & 410 for service)	A
401	0701631	2	HEX HD CAPSCREW, M16X140, GR8.8, (torque to 241 Nm/178 lb-ft)	
403	0712029	2	HEX HD CAPSCREW, M20X120, GR10.9	
404	3332011	2	HEX NUT, M20X2-1/2	
405	4812300	2	WASHER, 16mm	
406	1001095650	AR	LOCTITE 243	
407	5242000	2	WASHER, 20mm	
408	1001009146	2	HARD WASHER	
409	1001127272	1	COUNTERWEIGHT PLATE	
410	1001142490	1	COUNTERWEIGHT, (4014PS)	
410	1001004904BL	1	COUNTERWEIGHT, (4017PS)	
	1001125508	Ref	REAR VIEW MIRROR INSTALLATION, (3706PS & 3707PS), (Construction), (not available to order, see items 505 thru 511 & 516 for service)	G
	1001097979	Ref	REAR VIEW MIRROR INSTALLATION, (4014PS), (not available to order, see items 505 thru 509, 515 & 516, 522, 526 & 535 for service)	F
	1001115229	Ref	REAR VIEW MIRROR INSTALLATION, (4017PS), (not available to order, see items 505, 508 thru 510 & 522 thru 550 for service)	E
	1001125519	Ref	REAR VIEW MIRROR INSTALLATION, (33.7, 37.6, 37.7),	F

## SECTION 1 - FRAME AND ATTACHING PARTS

ITEM	PART NUMBER	QTY	DESCRIPTION	REV
			(Agricultural), (not available to order, see items 505 thru 511, 516, 522, 526 & 535 for service)	
505	1001095650	AR	LOCTITE 243	
506	1001142724	1	CONVEX MIRROR	
507	1001142726	1	CONVEX MIRROR	
508	1001142738	1	MIRROR SUPPORT BRACKET	
509	1001143339	1	CONVEX MIRROR	
511	0760810	2	HEX HD CAPSCREW, M8X20, GR8.8, (torque to 28 Nm/20.65 lb-ft)	
515	0760812	2	HEX HD CAPSCREW, M8X25, GR8.8, (torque to 28 Nm/21 lb-ft)	
516	4811900	2	WASHER, 8mm	
522	0761012	4	HEX HD CAPSCREW, M10X25, GR8.8, (4017PS)	
522	0761012	3	HEX HD CAPSCREW, M10X25, GR8.8, (4014PS, 33.7, 37.6, 37.7)	
526	4812000	3	WASHER, 10mm, (4014PS, 33.7, 37.6, 37.7)	
526	4812000	8	WASHER, 10mm, (4017PS)	
529	1001008436	2	MIRROR ASSY, (includes items 551 thru 553)	B
533	1001096914	1	LAMP BRACKET CAP	
535	1001157839	1	LAMP BRACKET, (4014PS)	
535	1001146576	1	MIRROR BRACKET, (4017PS)	
535	1001142763	1	MIRROR BRACKET, (33.7, 37.6, 37.7)	
538	1001150306	1	REAR VIEW MIRROR	
543	0761014	4	HEX HD CAPSCREW, M10X30, GR8.8	
550	1001119285	1	MIRROR BRACKET	
551	1001008475	2	LOCKWASHER, #12	
552	1001009062	2	WASHER	
553	1001010838	2	HEX SOCKET HD CAPSCREW	
	1001097342	Ref	HITCH REAR VIEW MIRROR INSTALLATION, (3706PS, 3707PS, 33.7, 37.6, 37.7), (if equipped), (not available to order, see items 604 thru 612 for service)	C
604	1001005981	1	MIRROR	
606	1001101755	1	ARM MOUNTING BRACKET	
607	1001101756	1	MIRROR ARM BRACKET	
609	1001095650	AR	LOCTITE 243	
610	1001102830	3	SOCKET HD CAPSCREW, M8X45, (torque to 28 Nm/21 lb-ft)	
611	4811900	3	WASHER, 8mm	
612	3290801	3	HEX NUT, M8X1-1/4	
621	0760614	2	HEX HD CAPSCREW, M6X30, GR8.8, (4014PS & 4017PS)	
624	4811700	2	WASHER, 6mm, (4014PS & 4017PS)	
626	1001008436	1	MIRROR ASSY, (4014PS & 4017PS), (includes items 651 thru 653)	B
630	1001005980	1	ARM ASSY, (4014PS & 4017PS)	B
651	1001008475	2	LOCKWASHER, #12	
652	1001009062	2	WASHER	
653	1001010838	2	HEX SOCKET HD CAPSCREW	
	1001134285	Ref	BOOM PROP INSTALLATION, (3706PS, 3707PS, 33.7, 37.6, 37.7), (not available to order, see items 701 thru 705 for service)	A
	1001101291	Ref	BOOM PROP INSTALLATION, (4014PS), (not available to order, see items 702 & 705 thru 717 for service)	A
	1001101732	Ref	BOOM PROP INSTALLATION, (4017PS), (not available to order, see items 702 & 705 thru 717 for service)	A
701	0100019	AR	LOCTITE 271	
702	1001101274	1	BOOM PROP BRACKET, (3706PS, 3707PS, 33.7, 37.6, 37.7)	
702	1001101746	1	BOOM PROP BRACKET, (4017PS)	

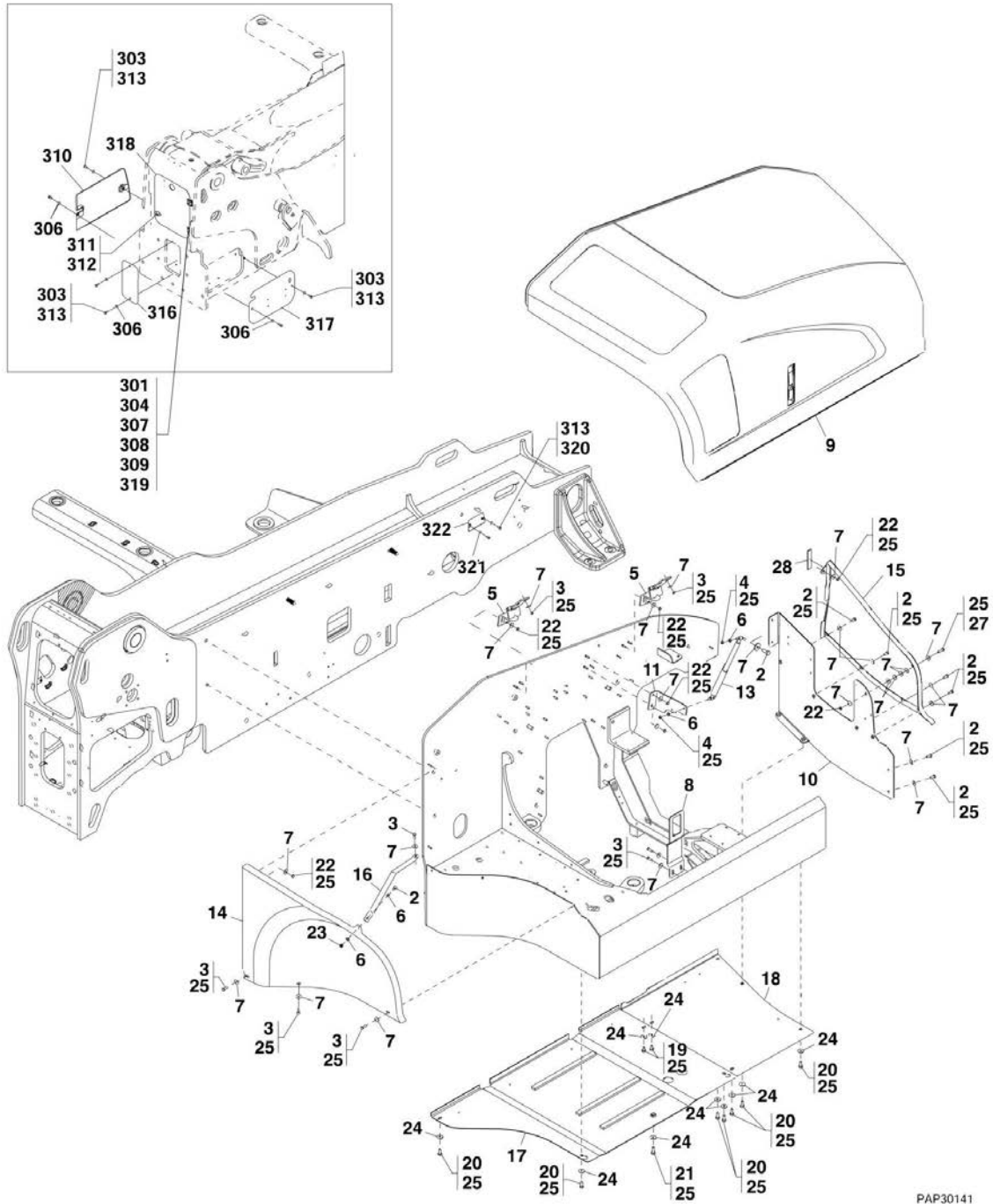


## SECTION 1 - FRAME AND ATTACHING PARTS

ITEM	PART NUMBER	QTY	DESCRIPTION	REV
703	1001134286	2	STUD, M10X1-1/2X45, (torque to 55 Nm/41 lb-ft)	
704	1001134307	2	WING NUT, M10	
705	1784861	2	O-RING	
713	0761214	2	HEX SOCKET HD CAPSCREW, M12X30, GR8.8	
714	1001101458	2	WING BOLT, M8X40	
715	3291201	2	HEX NUT, M12X1-3/4	
716	1001095650	AR	LOCTITE 243	
717	1001101628	2	BOOM PROP MOUNT BRACKET	
802	0760814	8	HEX HD CAPSCREW, (full thread), M8X30, GR8.8, (Germany - if equipped)	
803	806253	2	WEDGE, (Germany - if equipped)	
804	806264	2	WEDGE HOLDER, (Germany - if equipped)	
805	3290801	8	HEX NUT, M8X1.25, (Germany - if equipped)	
808	4811900	16	WASHER, 8mm, (Germany - if equipped)	
814	1060628	2	CABLE TIE DOWN, (Germany - if equipped)	
	1001145746	Ref	COVER PLATE INSTALLATION, (3706PS & 37.6), (not available to order, see items 901 thru 910 for service)	B
	1001168377	Ref	COVER PLATE INSTALLATION, (3706PS & 37.6, if equipped with trailer options), (not available to order, see items 901 thru 905, 908 & 910 for service)	A
	1001145747	Ref	COVER PLATE INSTALLATION, (3707PS, 37.7 & 33.7), (not available to order, see items 901 thru 910 for service)	B
	1001168058	Ref	COVER PLATE INSTALLATION, (3707PS, 37.7 & 33.7, if equipped with trailer options), (not available to order, see items 901 thru 905, 908 & 910 for service)	A
901	0760812	4	HEX HD CAPSCREW, M8X25, GR8.8, (torque to 28 Nm/20.65 lb-ft)	
902	0761010	8	HEX HD CAPSCREW, M10X20, GR8.8, (torque to 55 Nm/40.56 lb-ft)	
903	4811902	4	WASHER, 8mm	
904	4812000	8	WASHER, 10mm	
905	1001093001BL	2	SIDE HYDRAULIC PANEL, (3706PS, 33.7 & 37.7)	
906	1001093007BL	2	SIDE HYDRAULIC PANEL, (3707PS, 33.7 & 37.7)	
907	1001093029BL	1	REAR HYDRAULIC PANEL	
908		Ref	LOCTITE 243	
909	1001095974BL	1	REAR HYDRAULIC PANEL	
910		Ref	FRONT HYDRAULIC PANEL, (See BOOM SECTION for Breakdown)	

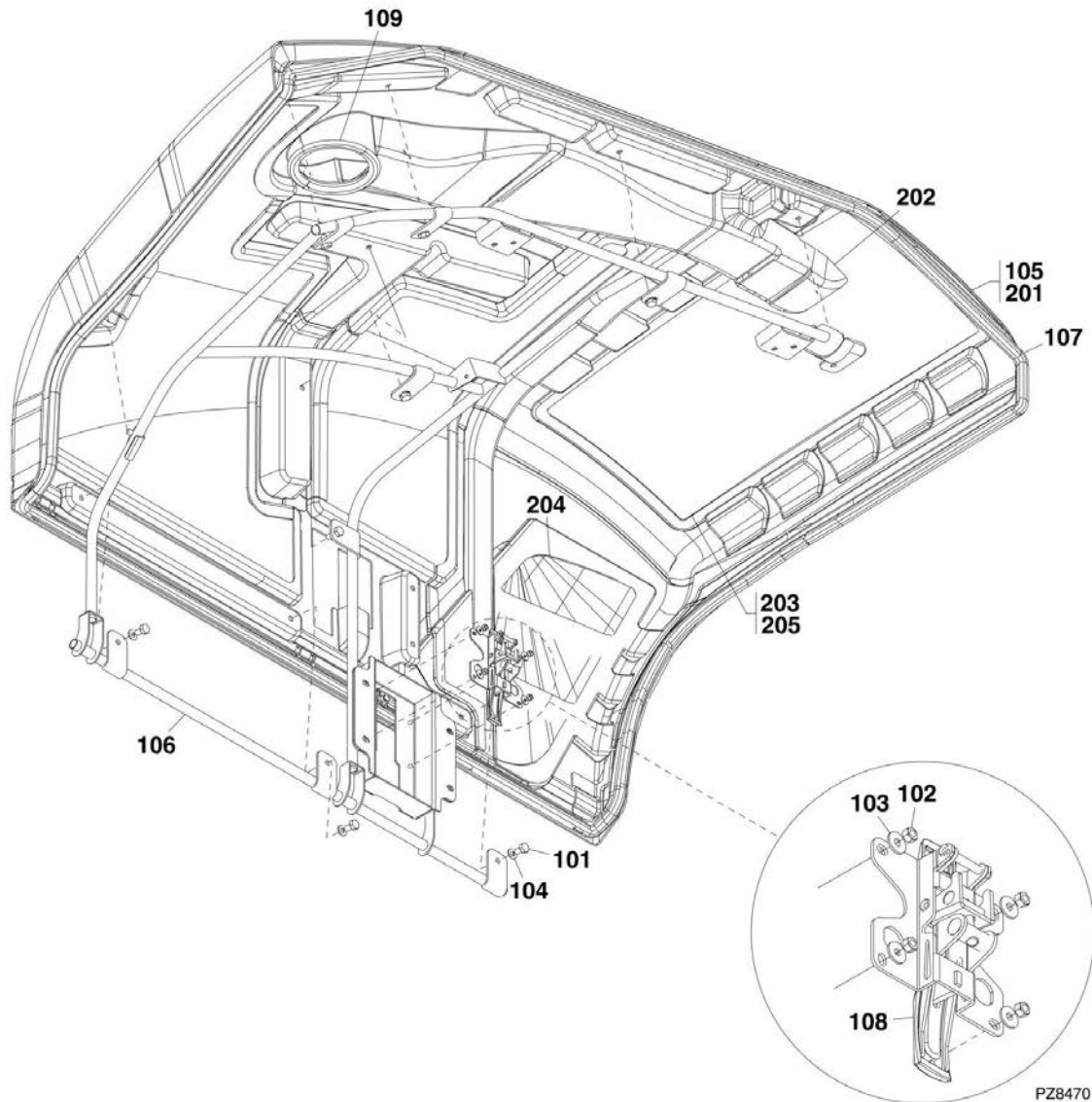
# SECTION 1 - FRAME AND ATTACHING PARTS

## FIGURE 1-2. COVERS



PAP30141

# SECTION 1 - FRAME AND ATTACHING PARTS



**SECTION 1 - FRAME AND ATTACHING PARTS**

**FIGURE 1-2. COVERS**

ITEM	PART NUMBER	QTY	DESCRIPTION	REV
	1001131371	Ref	HOOD INSTALLATION, (3706PS, 3707PS, 4014PS & 4017PS), (not available to order, see items 2 thru 28 for service)	J
	1001131370	Ref	HOOD INSTALLATION, (33.7, 37.6 & 37.7), (not available to order, see items 2 thru 28 for service)	K
2	0760810	9	HEX HD CAPSCREW, M8X20, GR8.8, (torque to 28 Nm/20.65 lb-ft)	
3	0760812	10	HEX HD CAPSCREW, M8X25, GR8.8, (torque to 14 Nm/10.32 lb-ft)	
4	3290807	2	HEX LOCKNUT, M8X1-1/4	
5	4806433	2	HOOD HINGE	
6	4811900	4	WASHER, 8mm	
7	4811902	33	WASHER, 8MM	
8	1001131367	1	LATCH PLATE	
9	1001131373	1	HOOD GROUP, (3706PS, 3707PS, 4014PS & 4017PS), (includes items 101 thru 109)	
9	1001131372	1	HOOD GROUP, (33.7, 37.6 & 37.7), (includes items 101 thru 109)	
10	1001139161	1	PLATE	
11	1001142186	1	GAS STRUT MOUNT BRACKET	
13	1001112426	1	GAS SPRING	
14	1001129879	1	REAR ENGINE ENCLOSURE COVER	
15	1001144126	1	FRONT ENGINE ENCLOSURE COVER	
16	1001141439	1	REAR PANEL BRACKET	
17	1001130735	1	BASE PLATE ASSY	
18	1001132400	1	BASE PLATE	
19	0761008	2	HEX HD CAPSCREW, M10X16, GR8.8, (torque to 55 Nm/40.56 lb-ft)	
20	0761012	7	HEX HD CAPSCREW, M10X25, GR8.8, (torque to 55 Nm/40.56 lb-ft)	
21	0761014	1	HEX HD CAPSCREW, M10X30, GR8.8, (torque to 55 Nm/40.56 lb-ft)	
22	3290801	10	HEX NUT, M8X1-1/4, GR8, (torque to 28 Nm/20.65 lb-ft)	
23	3290805	1	HEX LOCKNUT, M8X1-1/4, GR8	
24	4812002	10	WASHER, 10mm	
25	1001095650	AR	LOCTITE 243	
27	0760814	1	HEX HD CAPSCREW, M8X30, GR8.8, (torque to 14 Nm/10.32 lb-ft)	
28	1001144063	1	SEAL	
101	0761009	10	HEX HD CAPSCREW, M10X18, GR8.8	
102	3290607	4	HEX LOCKNUT, M6X1	
103	4811702	4	WASHER, 6mm	
104	4812000	10	WASHER, 10mm	
105	1001131375	1	HOOD ASSY, (3706PS, 3707PS, 4014PS & 4017PS), (include items 201 thru 205)	
105	1001131374	1	HOOD ASSY, (33.7, 37.6 & 37.7), (include items 201 thru 205)	
106	1001132863	1	HOOD MOUNTING FRAME	
107	1001132872	1	SEAL	
108	1001132873	1	HOOD LATCH	
109	1001141412	1	SEAL	
201	1001131377	1	HOOD PANEL, (3706PS, 3707PS, 4014PS & 4017PS)	
201	1001131376	1	HOOD PANEL, (33.7, 37.6 & 37.7)	
202	1001131378	1	HOOD SUPPORT	
203	1001132859	1	TOP HOOD GRILLE	