



---

# ***Illustrated Parts Manual***

## ***Models***

***3508PS, 3509PS***

***3512PS, 3513PS***

***4008PS, 4009PS***

***4012PS, 4013PS***

***4017PS***

## ***Agrovector***

***40.8, 40.9***

Prior to SN 1160006866 excluding  
1160006594, 1160006604, 1160006748,  
1160006752, 1160006755, 1160006756

***31200204***

*November 25, 2014*



An Oshkosh Corporation Company



## **EFFECTIVITY PAGE**

September 14, 2007 - A - Original Issue Of Manual

April 16, 2007 - B - Revised Manual

November 3, 2008 - C - Revised Manual

July 24, 2009 - D - Revised Manual

July 28, 2010 - E - Revised Manual

September 21, 2010 - F - Revised Manual; added models 40.8 & 40.9

June 8, 2011 - G - Revised Manual

October 21, 2011 - H - Revised Manual

June 8, 2012 - I - Revised Manual

January 8, 2013 - J - Revised Manual

April 3, 2014 - K - Revised Manual

November 25, 2014 - L - Revised Manual



# TABLE OF CONTENTS

SECTION 1 - FRAME AND ATTACHING PARTS.....	9
FIGURE 1-1. FRAME SHROUDING AND ATTACHING PARTS, RIGHT SIDE .....	10
FIGURE 1-2. FRAME SHROUDING AND ATTACHING PARTS, LEFT SIDE .....	16
FIGURE 1-3. AXLE AND FENDER INSTALLATION .....	20
FIGURE 1-4. OUTRIGGER INSTALLATION .....	24
FIGURE 1-5. OUTRIGGER INSTALLATION .....	26
FIGURE 1-6. DRAW BAR COUPLING INSTALLATION.....	28
FIGURE 1-7. SITE HITCH INSTALLATION.....	30
FIGURE 1-8. TRAILER HITCH INSTALLATION (Prior to SN 116005199).....	32
FIGURE 1-9. AUTO HITCH, PIN HITCH AND PITON FRAME-AUTO HITCH (SN 1160003924 to Present).....	34
FIGURE 1-10. PIN HITCH - CUNA C AND CUNA D2 (SN 1160003924 to Present).....	36
FIGURE 1-11. HYDRAULIC HITCH INSTALLATION (Prior to SN 1160003924) .....	38
FIGURE 1-12. HYDRAULIC HITCH INSTALLATION (SN 1160003924 to Present).....	40
FIGURE 1-13. TRAILER PLUG .....	42
SECTION 2 - BOOM.....	45
FIGURE 2-1. BOOM INSTALLATION.....	46
FIGURE 2-2. BOOM INSTALLATION.....	48
FIGURE 2-3. BOOM INSTALLATION.....	50
FIGURE 2-4. BOOM PIN INSTALLATION.....	52
FIGURE 2-5. FIRST BOOM SECTION ASSEMBLY.....	54
FIGURE 2-6. FIRST BOOM SECTION ASSEMBLY.....	56
FIGURE 2-7. FIRST BOOM SECTION ASSEMBLY.....	58
FIGURE 2-8. SECOND BOOM SECTION ASSEMBLY.....	60
FIGURE 2-9. SECOND BOOM SECTION ASSEMBLY.....	62
FIGURE 2-10. SECOND BOOM SECTION ASSEMBLY.....	64
FIGURE 2-11. THIRD BOOM SECTION ASSEMBLY .....	68
FIGURE 2-12. THIRD BOOM SECTION ASSEMBLY .....	70
FIGURE 2-13. FOURTH BOOM SECTION ASSEMBLY .....	74
FIGURE 2-14. QUICK ATTACH ASSEMBLY, MECHANICAL AND HYDRAULIC QUICK ATTACH .....	78
FIGURE 2-15. MANITOU QUICK ATTACH.....	82
FIGURE 2-16. BOOM ASSEMBLY, IF EQUIPPED FOR PLATFORM .....	84
FIGURE 2-17. BOOM ASSEMBLY, IF EQUIPPED FOR PLATFORM .....	86
FIGURE 2-18. PLATFORM SENSOR INSTALLATION .....	88
SECTION 3 - ATTACHMENTS .....	91
FIGURE 3-1. MANURE BUCKET.....	92
FIGURE 3-2. MULTI-PURPOSE BUCKET .....	94
FIGURE 3-3. BUCKETS .....	96
FIGURE 3-4. FORK MOUNTED HOOK .....	98
FIGURE 3-5. CRANE HOOK.....	100
FIGURE 3-6. CONCRETE BUCKET .....	102
FIGURE 3-7. CARRIAGE ASSEMBLY .....	104
FIGURE 3-8. SIDE SHIFT CARRIAGE ASSEMBLY .....	106
FIGURE 3-9. FORK TINES .....	108
FIGURE 3-10. TRUSS BOOM.....	110
FIGURE 3-11. FORK POSITIONING CARRIAGE W/FORKS .....	112
FIGURE 3-12. FIXED PLATFORM INSTALLATION.....	114
FIGURE 3-13. EXTENDABLE PLATFORM INSTALLATION .....	118
FIGURE 3-14. EXTENDABLE PLATFORM ASSEMBLY.....	122
FIGURE 3-15. CONSOLE BOX ASSEMBLY.....	124
FIGURE 3-16. MANITOU CARRIAGE.....	128
SECTION 4 - ENGINE AND ATTACHING PARTS .....	131
FIGURE 4-1. ENGINE INSTALLATION.....	132
FIGURE 4-2. ENGINE ASSEMBLY (Prior to SN 1160003927) .....	134
FIGURE 4-3. ENGINE ASSEMBLY (SN 1160003927 to Present) .....	136
FIGURE 4-4. FUEL TANK AND LINES (Prior to SN 1160003927).....	140
FIGURE 4-5. FUEL TANK AND LINES (SN 1160003927 to Present).....	142
FIGURE 4-6. COOLING SYSTEM INSTALLATION .....	144
FIGURE 4-7. AIR FILTER INSTALLATION .....	148
FIGURE 4-8. MUFFLER INSTALLATION.....	150

# TABLE OF CONTENTS

FIGURE 4-9. AC PUMP INSTALLATION .....	152
FIGURE 4-10. TRANSMISSION ASSEMBLY .....	154
FIGURE 4-11. TRANSMISSION ASSEMBLY - CONVERTER HOUSING .....	156
FIGURE 4-12. TRANSMISSION ASSEMBLY - CASE AND PLATE .....	158
FIGURE 4-13. TRANSMISSION ASSEMBLY - TORQUE CONVERTER .....	160
FIGURE 4-14. TRANSMISSION ASSEMBLY - GEAR GROUP 3 SPEED .....	162
FIGURE 4-15. TRANSMISSION ASSEMBLY - GEAR GROUP 4 SPEED .....	164
FIGURE 4-16. TRANSMISSION ASSEMBLY - PUMP DRIVE GROUP .....	166
FIGURE 4-17. TRANSMISSION ASSEMBLY - CHARGE PUMP .....	168
FIGURE 4-18. TRANSMISSION ASSEMBLY - REVERSE IDLER .....	170
FIGURE 4-19. TRANSMISSION ASSEMBLY - FORWARD AND REVERSE SHAFT .....	172
FIGURE 4-20. TRANSMISSION ASSEMBLY - 3RD SHAFT .....	174
FIGURE 4-21. TRANSMISSION ASSEMBLY - 3RD AND HIGH (4TH) SHAFT .....	176
FIGURE 4-22. TRANSMISSION ASSEMBLY - 1ST AND 2ND SHAFT .....	178
FIGURE 4-23. TRANSMISSION ASSEMBLY - OUTPUT SHAFT .....	180
FIGURE 4-24. TRANSMISSION ASSEMBLY - CONTROL AND MODULATION VALVE ASSEMBLY .....	182
FIGURE 4-25. TRANSMISSION ASSEMBLY - DRIVE PLATE .....	184
FIGURE 4-26. TRANSMISSION ASSEMBLY - DROP BOX .....	186
SECTION 5 - DRIVE TRAIN .....	189
FIGURE 5-1. FRONT AXLE ASSEMBLY .....	190
FIGURE 5-2. FRONT AXLE ASSEMBLY .....	192
FIGURE 5-3. FRONT AXLE ASSEMBLY - CENTRAL HOUSING AND STEERING .....	194
FIGURE 5-4. FRONT AXLE ASSEMBLY - DIFFERENTIAL .....	196
FIGURE 5-5. FRONT AXLE ASSEMBLY - HUB REDUCTION .....	198
FIGURE 5-6. FRONT AXLE ASSEMBLY - HUB REDUCTION .....	202
FIGURE 5-7. FRONT AXLE ASSEMBLY - BRAKE COMPONENTS .....	206
FIGURE 5-8. FRONT AXLE ASSEMBLY - BRAKE COMPONENTS .....	208
FIGURE 5-9. REAR AXLE ASSEMBLY .....	210
FIGURE 5-10. REAR AXLE ASSEMBLY - CENTRAL HOUSING AND STEERING .....	212
FIGURE 5-11. REAR AXLE ASSEMBLY - DIFFERENTIAL .....	214
FIGURE 5-12. REAR AXLE ASSEMBLY - EXTERNAL AXLE COMPONENTS .....	216
FIGURE 5-13. REAR AXLE ASSEMBLY - BRAKE COMPONENTS .....	220
FIGURE 5-14. DRIVE TRAIN INSTALLATION .....	222
FIGURE 5-15. TIRE AND WHEEL ASSEMBLY .....	224
SECTION 6 - CAB .....	227
FIGURE 6-1. CAB INSTALLATION .....	228
FIGURE 6-2. CAB ASSEMBLY .....	232
FIGURE 6-3. INTERIOR INSTALLATION .....	238
FIGURE 6-4. CAB DOOR AND WINDOW INSTALLATION .....	240
FIGURE 6-5. WIPER SYSTEM INSTALLATION .....	244
FIGURE 6-6. SEAT INSTALLATION .....	246
FIGURE 6-7. HEATER INSTALLATION AND CIRCULATION .....	248
FIGURE 6-8. AIR CONDITIONING UNIT INSTALLATION .....	250
FIGURE 6-9. FRONT CAB GLASS SHIELD .....	254
SECTION 7 - CONTROLS .....	257
FIGURE 7-1. STEERING CONTROL INSTALLATION .....	258
FIGURE 7-2. BRAKE INSTALLATION .....	260
FIGURE 7-3. THROTTLE INSTALLATION .....	262
FIGURE 7-4. PARKING BRAKE INSTALLATION .....	264
FIGURE 7-5. MECHANICAL HAND BRAKE ASSEMBLY .....	268
FIGURE 7-6. JOYSTICK CONTROLLER .....	270
SECTION 8 - HYDRAULIC CIRCUITS .....	273
FIGURE 8-1. SUPPLY CIRCUIT .....	274
FIGURE 8-2. STEERING SUPPLY .....	278
FIGURE 8-3. SERVICE/PARK BRAKE .....	280
FIGURE 8-4. LIFT CYLINDER .....	286
FIGURE 8-5. LIFT CYLINDER .....	288
FIGURE 8-6. LIFT CYLINDER .....	290
FIGURE 8-7. LIFT CYLINDER .....	292

# TABLE OF CONTENTS

FIGURE 8-8. EXTEND/RETRACT CYLINDER .....	294
FIGURE 8-9. EXTEND/RETRACT CYLINDER .....	296
FIGURE 8-10. EXTEND/RETRACT CYLINDER.....	298
FIGURE 8-11. TILT AND TILT COMPENSATION.....	300
FIGURE 8-12. TILT AND TILT COMPENSATION.....	304
FIGURE 8-13. TILT AND TILT COMPENSATION.....	308
FIGURE 8-14. AUXILIARY FUNCTION.....	310
FIGURE 8-15. AUXILIARY FUNCTION.....	312
FIGURE 8-16. AUXILIARY FUNCTION.....	314
FIGURE 8-17. HOSE AND CABLE CARRIER INSTALLATION.....	316
FIGURE 8-18. FRAME LEVEL AND NON-FRAME LEVEL HYDRAULICS .....	318
FIGURE 8-19. FRAME LEVEL AND OUTRIGGER .....	320
FIGURE 8-20. BOOM REAR AUXILIARY .....	324
FIGURE 8-21. TRAILER BRAKE INSTALLATION .....	326
FIGURE 8-22. BRAKE ACCUMULATOR INSTALLATION.....	328
SECTION 9 - HYDRAULIC COMPONENTS.....	331
FIGURE 9-1. LIFT CYLINDER (Prior to SN 1160005745).....	332
FIGURE 9-2. LIFT CYLINDER (SN 1160005745 to Present) .....	334
FIGURE 9-3. LIFT CYLINDER (Prior to SN 1160005648).....	336
FIGURE 9-4. LIFT CYLINDER (SN 1160005648 to Present) .....	338
FIGURE 9-5. LIFT CYLINDER .....	340
FIGURE 9-6. LIFT CYLINDER (Prior to SN 1160005738).....	342
FIGURE 9-7. LIFT CYLINDER (SN 1160005738 to Present) .....	344
FIGURE 9-8. EXTEND/RETRACT CYLINDER .....	346
FIGURE 9-9. EXTEND/RETRACT CYLINDER .....	348
FIGURE 9-10. EXTEND/RETRACT CYLINDER.....	350
FIGURE 9-11. EXTEND/RETRACT CYLINDER.....	352
FIGURE 9-12. EXTEND/RETRACT CYLINDER.....	354
FIGURE 9-13. EXTEND/RETRACT CYLINDER.....	356
FIGURE 9-14. TILT CYLINDER.....	358
FIGURE 9-15. TILT CYLINDER.....	360
FIGURE 9-16. COMPENSATION CYLINDER .....	362
FIGURE 9-17. COMPENSATION CYLINDER .....	364
FIGURE 9-18. FRAME LEVEL CYLINDER .....	366
FIGURE 9-19. FRAME LEVEL CYLINDER .....	368
FIGURE 9-20. OUTRIGGER CYLINDER ASSEMBLY .....	370
FIGURE 9-21. OUTRIGGER CYLINDER ASSEMBLY .....	372
FIGURE 9-22. OUTRIGGER CYLINDER ASSEMBLY .....	374
FIGURE 9-23. FORK LOCKING CYLINDER ASSEMBLY.....	376
FIGURE 9-24. FORK LOCKING CYLINDER ASSEMBLY.....	378
FIGURE 9-25. MAIN CONTROL VALVE ASSEMBLY .....	380
FIGURE 9-26. HYDRAULIC TANK INSTALLATION .....	384
FIGURE 9-27. BRAKE CYLINDER (Prior to SN 1160005851) .....	386
FIGURE 9-28. BRAKE CYLINDER (SN 1160005851 to Present) .....	388
FIGURE 9-29. DIVERTER VALVE (Prior to SN 1160005127).....	390
FIGURE 9-30. DIVERTER VALVE (SN 1160005127 to Present).....	392
FIGURE 9-31. PISTON PUMP .....	394
FIGURE 9-32. FRAME LEVEL VALVE.....	396
FIGURE 9-33. OUTRIGGER AND FRAME LEVEL VALVE.....	398
FIGURE 9-34. STEERING SELECT VALVE .....	400
FIGURE 9-35. AUXILIARY DIVERTER VALVE.....	402
FIGURE 9-36. ACTUATOR ASSEMBLY .....	404
SECTION 10 - ELECTRICAL .....	407
FIGURE 10-1. ENGINE ELECTRICAL INSTALLATION.....	408
FIGURE 10-2. CAB ELECTRICAL INSTALLATION .....	410
FIGURE 10-3. ELECTRICAL INSTALLATION, CAB SWITCHES .....	414
FIGURE 10-4. BOOM AND FRAME ELECTRICAL INSTALLATIONS .....	416
FIGURE 10-5. ELECTRICAL INSTALLATION, BOOM AUXILIARY ELECTRIC .....	420
FIGURE 10-6. ELECTRICAL INSTALLATION, BOOM AUXILIARY ELECTRIC .....	422
FIGURE 10-7. ELECTRICAL INSTALLATION, LIGHTS.....	424
FIGURE 10-8. MAIN CAB HARNESS .....	428
FIGURE 10-9. BOOM HARNESS AUXILIARY ELECTRICAL ADAPTER .....	434
FIGURE 10-10. BOOM LIGHTS HARNESS.....	436

# TABLE OF CONTENTS

FIGURE 10-11. BOOM RETRACT HARNESS .....	438
FIGURE 10-12. QUICK CONNECT HARNESS .....	440
FIGURE 10-13. CABLE HARNESS.....	442
FIGURE 10-14. FRONT CHASSIS HARNESS .....	444
FIGURE 10-15. REAR CHASSIS HARNESS.....	446
FIGURE 10-16. CAB ROOF HARNESS.....	448
FIGURE 10-17. POWERSHIFT ENGINE HARNESS.....	452
FIGURE 10-18. ELECTRICAL INSTALLATION, PLATFORM.....	456
FIGURE 10-19. LMIS INSTALLATION.....	458
FIGURE 10-20. LMIS AUDIBLE TOWER/BEACON INSTALLATION .....	462
FIGURE 10-21. OUTRIGGER HARNESS.....	464
FIGURE 10-22. OUTRIGGER HARNESS.....	466
FIGURE 10-23. LSI HARNESS (8M;9M;12M;13M SN 1160005993 to Present, Including 1160005949 and 1160005950; 17M SN 1160005937 to Present, Excluding 1160005952, 1160005960, 1160005963, 1160005966 and 1160005978) .....	468
FIGURE 10-24. PLATFORM HARNESS.....	470
FIGURE 10-25. PLATFORM CAB HARNESS .....	472
FIGURE 10-26. SMARTBASKET HARNESS.....	474
SECTION 11 - DECALS .....	477
FIGURE 11-1. FRAME AND BOOM DECALS .....	478
FIGURE 11-2. DECALS - CAB.....	484
FIGURE 11-3. CAB AND FRAME DECALS, (40.8 & 40.9) .....	492
FIGURE 11-4. BOOM DECALS, (40.8 & 40.9).....	496
SECTION 12 - RECOMMENDED SPARE PARTS.....	499
FIGURE 12-1. RECOMMENDED SPARE PARTS.....	500
PART NUMBER INDEX.....	503

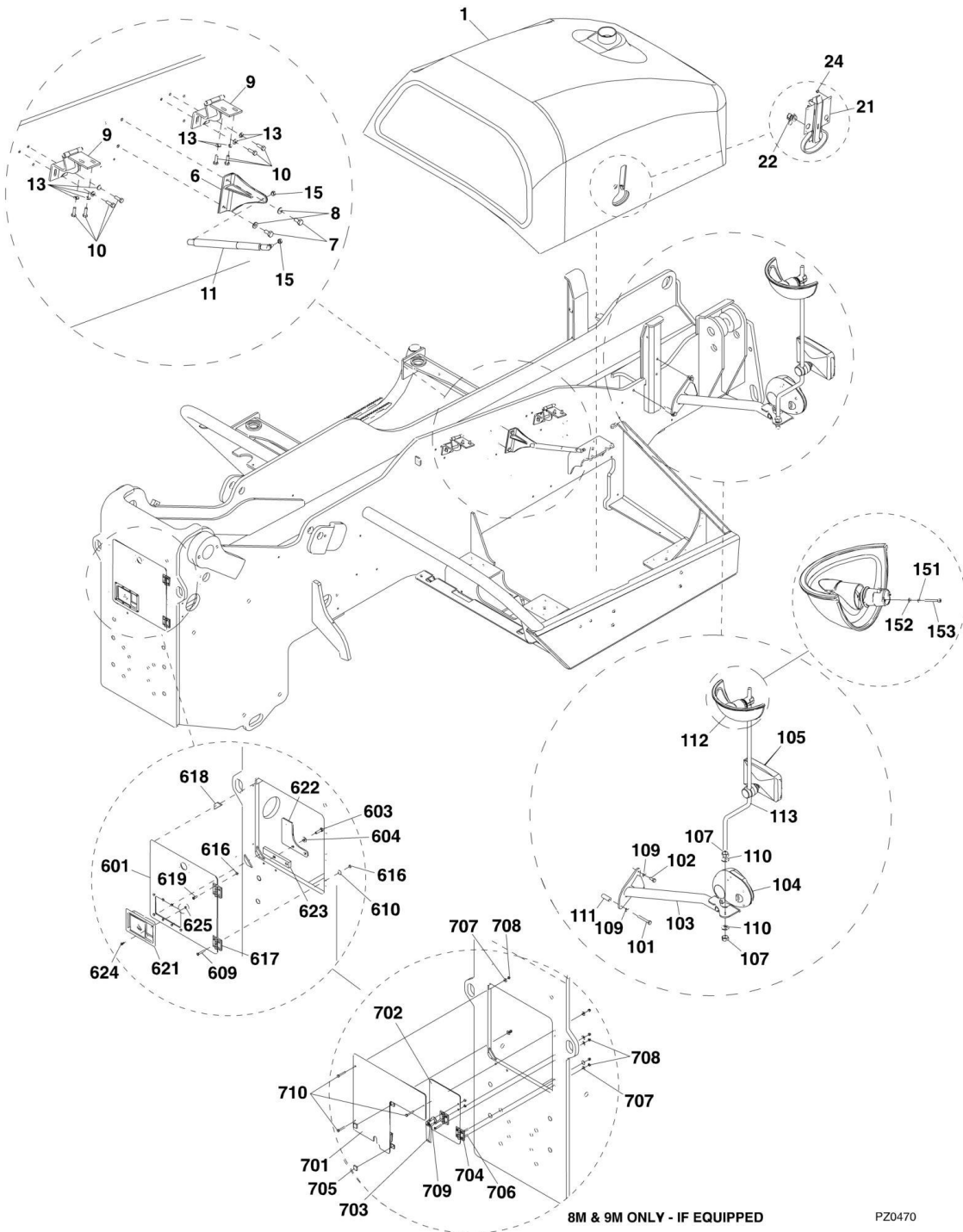


# SECTION 1 - FRAME AND ATTACHING PARTS

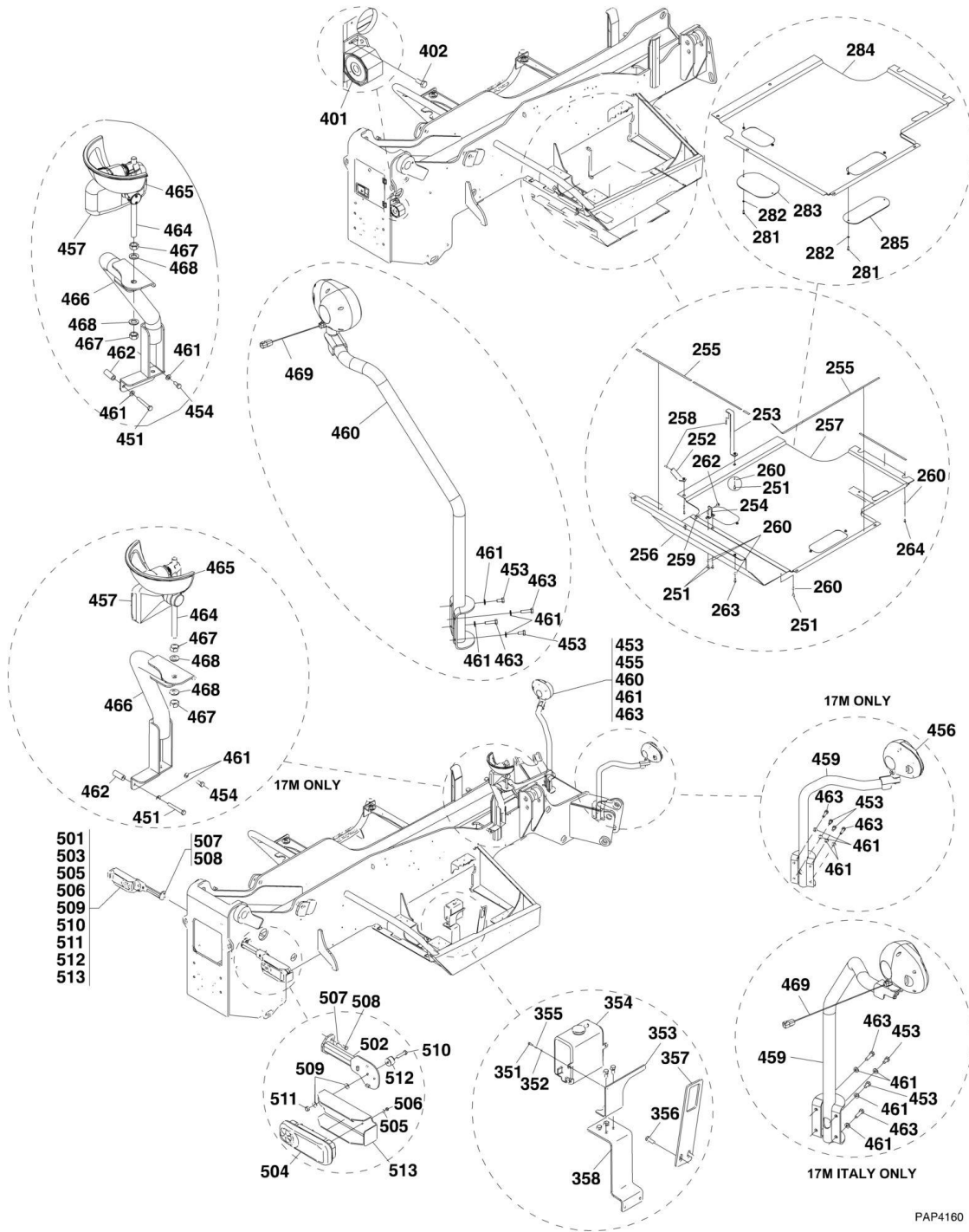
## SECTION 1 - FRAME AND ATTACHING PARTS

# SECTION 1 - FRAME AND ATTACHING PARTS

## FIGURE 1-1. FRAME SHROUDING AND ATTACHING PARTS, RIGHT SIDE



# SECTION 1 - FRAME AND ATTACHING PARTS



PAP4160

# SECTION 1 - FRAME AND ATTACHING PARTS

## FIGURE 1-1. FRAME SHROUDING AND ATTACHING PARTS, RIGHT SIDE

ITEM	PART NUMBER	QTY	DESCRIPTION	REV
	0275243	Ref	ENGINE COVER INSTALLATION, (not available to order, see items 1 thru 15 for service)	E
1	1001092126	1	HOOD COVER ASSY, (3508PS, 3509PS, 3512PS, 3513PS, 4008PS, 4009PS, 4012PS, 4013PS & 4017PS), (includes items 21 thru 24)	C
1	1001092126G	1	HOOD COVER ASSY, (40.8 & 40.9), (includes items 21 thru 24)	C
6	4341228	1	BRACKET	
7	0761010	2	HEX HD CAPSCREW, M10X20, GR8.8	
8	4812000	2	WASHER, 10mm	
9	4806433	2	HOOD HINGE	
10	0760812	8	HEX HD CAPSCREW, M8X25, GR8.8	
11	8000420	1	GAS SPRING	
13	4811900	8	WASHER, 8mm	
15	3290807	2	HEX LOCKNUT, M8X1.25	
21	8000382	1	HOOD LATCH	
22	8000801	1	HOOD LOCK	
23	2014226	AR	TRIM, (not shown)	
24	3290607	3	HEX LOCKNUT, M6X1	
	0903586	Ref	RH LIGHT AND MIRROR INSTALLATION, (8M, 9M, 12M & 13M), (not available to order, see items 101 thru 113 for service)	B
101	0701024	1	HEX HD CAPSCREW, M10X80, GR8.8	
102	0761012	2	HEX HD CAPSCREW, M10X25, GR8.8	
103	0903584	1	RIGHT SIDE MIRROR BRACKET, (3508PS, 3509PS, 3512PS, 3513PS, 4008PS, 4009PS, 4012PS & 4013PS)	
103	0903584B	1	RIGHT SIDE MIRROR BRACKET, (40.8 & 40.9)	
104		Ref	RH DRIVING LIGHT, (includes mounting hardware), (See ELECTRICAL SECTION for Breakdown)	
105	3140007	1	RECTANGULAR MIRROR	
107	3292001	2	HEX NUT, M20X2.5	
109	4812000	3	WASHER, 10mm	
110	4812500	2	WASHER, 20mm	
111	8000704	1	STEEL PIPE	
112	1001008436	1	MIRROR ASSY, (includes items 151 thru 153)	
113	1001097298	1	MIRROR SUPPORT	
151	1001008475	2	LOCKWASHER, #12	
152	1001009062	2	WASHER	
153	1001010838	2	HEX BOLT	
	0275061	Ref	MOTOR SHIELD INSTALLATION, (not available to order, see items 251 thru 264 for service)	D
251	0760608	7	HEX HD CAPSCREW, M6X16, GR8.8	
252	0903422	1	ENGINE COVER BRACKET	
253	0903424	1	ENGINE COVER BRACKET	
254	0903426	1	ENGINE SUPPORT	
255	1898686	AR	TRIM	
256	1001101018	1	RADIATOR PANEL ASSY, (3508PS, 3509PS, 3512PS, 3513PS, 4008PS, 4009PS, 4012PS & 4013PS)	
256	1001101018B	1	RADIATOR PANEL ASSY, (40.8 & 40.9)	
257	1001099379	1	PROTECTING PANEL	
258	5200608	2	RIPP BOLT, M6X16	
259	5200812	1	RIPP BOLT, M8X25	
260	5211702	12	RIPP WASHER, 6mm	

## SECTION 1 - FRAME AND ATTACHING PARTS

ITEM	PART NUMBER	QTY	DESCRIPTION	REV
262	5220800	1	NUT, 8mm	
263	0760610	3	HEX HD CAPSCREW, M6X20mm, GR8.8	
264	0760612	2	HEX HD CAPSCREW, M6X25mm, GR8.8	
281	070057	4	HEX HD CAPSCREW, M5X14, GR8.8	
282	4811600	4	WASHER, 5mm	
283	1001099225	1	OIL DRAIN ACCESS COVER, (3508PS, 3509PS, 3512PS, 3513PS, 4008PS, 4009PS, 4012PS & 4013PS)	
283	1001099225B	1	OIL DRAIN ACCESS COVER, (40.8 & 40.9)	
284	1001099294	1	BELLY PAN, (3508PS, 3509PS, 3512PS, 3513PS, 4008PS, 4009PS, 4012PS & 4013PS)	
284	1001099294B	1	BELLY PAN, (40.8 & 40.9)	
285	1001099300	1	MAIN CONTROL VALVE ACCESS COVER, (3508PS, 3509PS, 3512PS, 3513PS, 4008PS, 4009PS, 4012PS & 4013PS)	
285	1001099300B	1	MAIN CONTROL VALVE ACCESS COVER, (40.8 & 40.9)	
351	0760407	2	HEX HD CAPSCREW, M4X14, GR8.8	
352	3290401	2	HEX NUT, M4X0.7	
353	3576678	1	PLATE, (3508PS, 3509PS, 3512PS, 3513PS, 4008PS, 4009PS, 4012PS, 4013PS & 4017PS)	
353	3576678B	1	PLATE, (40.8 & 40.9)	
354	4400493	1	WASHER TANK	
354	70022874	1	PUMP MOTOR	
355	4811400	2	WASHER, 4mm	
356	5201012	2	BOLT, M10X25	
357	8001626	1	PLATE	
358		Ref	HYDRAULIC FILTER BRACKET, (See HYDRAULIC CIRCUITS SECTION for Breakdown)	
401		Ref	BACK-UP ALARM, (See ELECTRICAL SECTION for Breakdown)	
402		Ref	RIPP BOLT, M6X16, (See ELECTRICAL SECTION for Breakdown)	
	0275942	Ref	HEADLIGHT AND MIRROR INSTALLATION, (17M), (not available to order, see items 451 thru 468 for service)	D
	1001107965	Ref	HEADLIGHT AND MIRROR INSTALLATION, (17M), (ITALY), (If equipped), (not available to order, see items 451 thru 469)	B
451	0701024	1	HEX HD CAPSCREW, M10X80, GR8.8	
453	0761010	4	HEX HD CAPSCREW, M10X20, GR8.8	
454	0761012	2	HEX HD CAPSCREW, M10X25, GR8.8	
455		Ref	LH DRIVING LIGHT, (includes mounting hardware), (See ELECTRICAL SECTION for Breakdown)	
456		Ref	RH DRIVING LIGHT, (includes mounting hardware), (See ELECTRICAL SECTION for Breakdown)	
457	3140007	1	RECTANGULAR MIRROR	
457	1001005981	1	RECTANGULAR MIRROR, (ITALY), (If equipped)	
459	4341434	1	RH HEADLIGHT BRACKET	
459	1001107552	1	RH HEADLIGHT BRACKET, (ITALY), (If equipped)	
460	4341435	1	LH HEADLIGH BRACKET	
460	1001107553	1	LH HEADLIGHT BRACKET, (ITALY), (If equipped)	
461	4812000	11	WASHER, 10mm	
462	8000704	1	STEEL PIPE	
463	0761016	4	HEX HD CAPSCREW, M10X40, GR8.8	
464	1001096588	1	ROD	
465	1001008436	1	MIRROR ASSY, (includes items 151 thru 153)	
466	1001097618	1	RH MIRROR BRACKET	
467	3292001	2	HEX NUT, M20X2.5	
468	4812500	2	WASHER, 20mm	

## SECTION 1 - FRAME AND ATTACHING PARTS

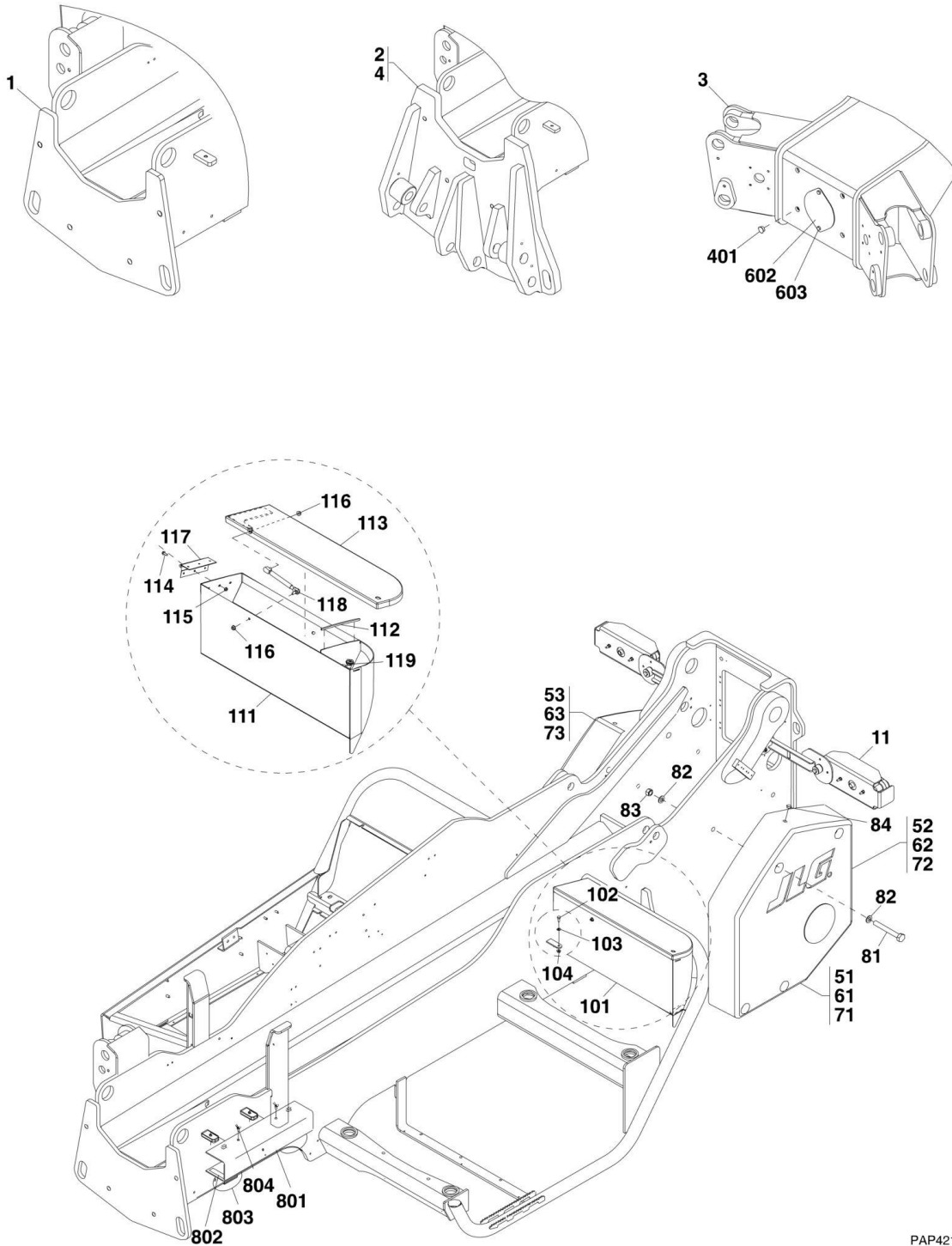
ITEM	PART NUMBER	QTY	DESCRIPTION	REV
469	1001109474	1	HARNESS, LIGHT EXT, (ITALY), (If equipped)	
	2920210	Ref	REAR LIGHT INSTALLATION, (not available to order, see items 501 thru 513 for service)	B
501	0903501	1	LH REAR LIGHT BRACKET, (3508PS, 3509PS, 3512PS, 3513PS, 4008PS, 4009PS, 4012PS, 4013PS & 4017PS)	
501	0903501B	1	LH REAR LIGHT BRACKET, (40.8 & 40.9)	
502	0903502	1	RH REAR LIGHT BRACKET, (3508PS, 3509PS, 3512PS, 3513PS, 4008PS, 4009PS, 4012PS, 4013PS & 4017PS)	
502	0903502B	1	RH REAR LIGHT BRACKET, (40.8 & 40.9)	
503		Ref	LH TAIL LIGHT, (See ELECTRICAL SECTION for Breakdown)	
504		Ref	RH TAIL LIGHT, (See ELECTRICAL SECTION for Breakdown)	
505	4811900	4	WASHER, 8mm	
506	3290807	4	HEX LOCKNUT, M8X1.25	
507	5212000	4	RIPP WASHER, 10mm	
508	0761012	4	HEX HD CAPSCREW, M10X25, GR8.8	
509	1356294	4	WASHER, 13mm	
510	0701219	2	HEX HD CAPSCREW, M12X55, GR8.8	
511	3291207	2	HEX LOCKNUT, M12X1.75	
512	8009517	2	BUFFER	
513	8009226	2	PLATE, (3508PS, 3509PS, 3512PS, 3513PS, 4008PS, 4009PS, 4012PS, 4013PS & 4017PS)	
513	8009226B	2	PLATE, (40.8 & 40.9)	
	3380744	Ref	REAR COVER PANEL INSTALLATION, (12M, 13M & 17M), (8M & 9M, if equipped), (not available to order, see items 601 thru 626 for service)	H
601	1001094692	1	REAR PANEL, (3508PS, 3509PS, 3512PS, 3513PS, 4008PS, 4009PS, 4012PS, 4013PS & 4017PS)	
601	1001094692B	1	REAR PANEL, (40.8 & 40.9)	
603	0760814	2	HEX HD CAPSCREW, M8X30, GR8.8	
604	5211902	2	RIPP WASHER, 8mm	
609	8006242	4	SCREW, M6X40	
610	5211702	4	RIPP WASHER, 6mm	
616	3290605	8	HEX LOCKNUT, 6mm	
617	8006105	2	JOINT HINGE	
618	909304	AR	TRIM	
619	0630576	4	SCREW, M6X20mm	
621	1001093383	1	LOCKING LATCH	
622	1001093372	1	LATCH BRACKET	
623	1001093373	1	LATCH SPACER	
624	1001099125	8	HEX HD CAPSCREW, M5X10	
625	3290505	8	HEX LOCKNUT, M5X0.8	
626		Ref	LICENSE PLATE LIGHT AND HARDWARE, (not shown), (See ELECTRICAL SECTION for Breakdown)	
	2902295	Ref	REAR ACCESS COVER INSTALLATION, (8M & 9M, IF EQUIPPED), (not available to order, see items 701 thru 710 for service)	C
701	3380506	1	PANEL ASSY, (3508PS, 3509PS, 4008PS & 4009PS)	
701	3380506B	1	PANEL ASSY, (40.8 & 40.9)	
702	3380509	1	ACCESS DOOR, (3508PS, 3509PS, 4008PS & 4009PS ) <b>(Prior to SN 1160005648)</b>	
702	3380509B	1	ACCESS DOOR, (40.8 & 40.9)	
702	1001112723	1	ACCESS DOOR, (3508PS, 3509PS, 4008PS & 4009PS ) <b>(SN 1160005648 to Present)</b>	
703	2940155	1	L-HANDLE	

## SECTION 1 - FRAME AND ATTACHING PARTS

ITEM	PART NUMBER	QTY	DESCRIPTION	REV
704	8006105	2	JOINT HINGE	
705	909304	AR	TRIM	
706	8006242	4	SCREW, M6X40	
707	5211702	7	RIPP WASHER, 6mm	
708	3290605	11	HEX LOCKNUT, 6mm	
709	0630576	4	SCREW, M6X20	
710	0700616	3	HEX HD CAPSCREW, M6X44, GR8.8	

# SECTION 1 - FRAME AND ATTACHING PARTS

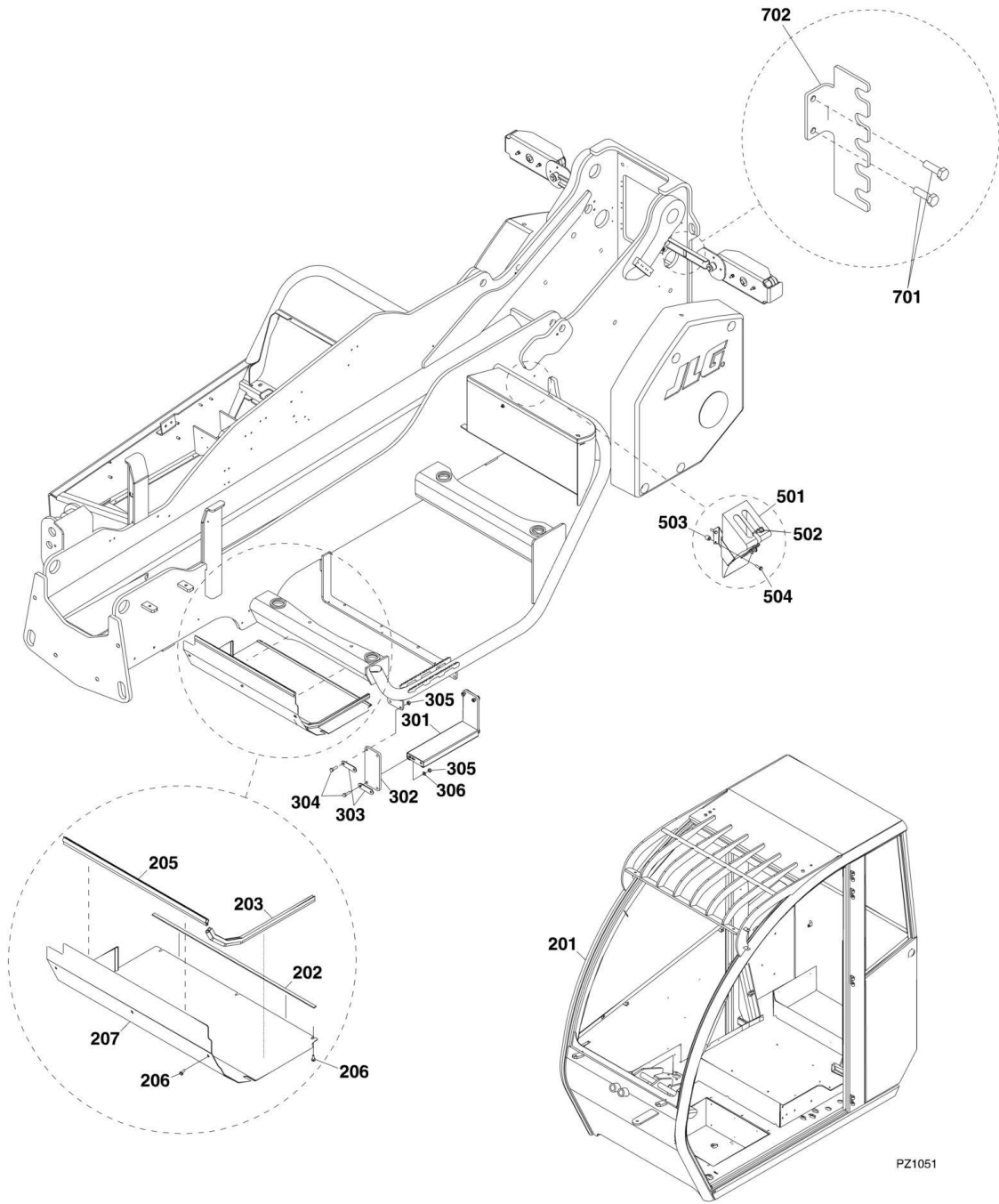
## FIGURE 1-2. FRAME SHROUDING AND ATTACHING PARTS, LEFT SIDE



PAP4210



# SECTION 1 - FRAME AND ATTACHING PARTS



PZ1051

# SECTION 1 - FRAME AND ATTACHING PARTS

## FIGURE 1-2. FRAME SHROUDING AND ATTACHING PARTS, LEFT SIDE

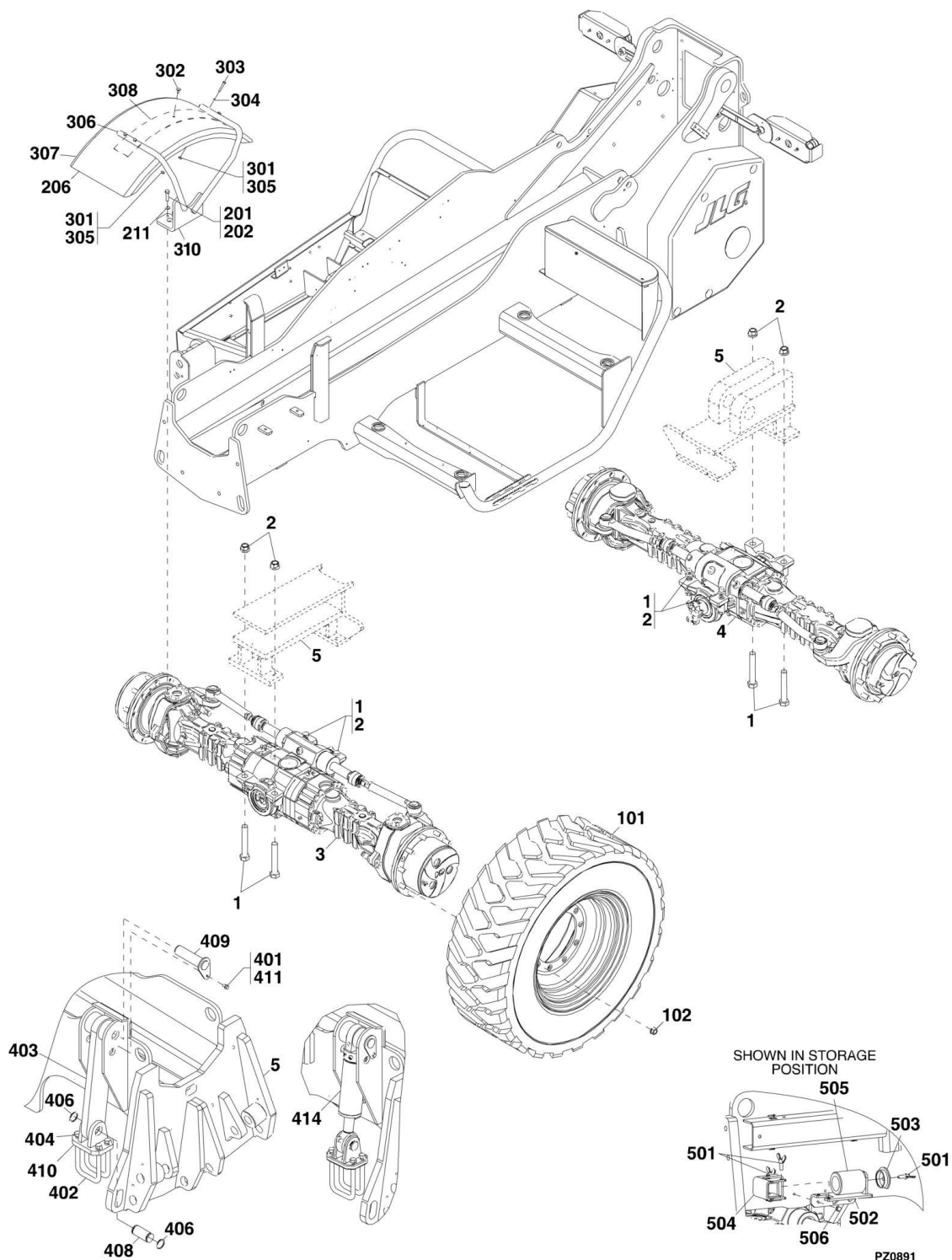
ITEM	PART NUMBER	QTY	DESCRIPTION	REV
1	2360740	1	FRAME ASSY, (3508PS, 3509PS, 4008PS & 4009PS)	L
1	2360740B	1	FRAME ASSY, (40.8 & 40.9)	
2	2360735	1	FRAME ASSY, (12M & 13M)	M
3	2360787	1	FRAME ASSY, (17M)	M
4	1001092934	1	FRAME ASSY, (13M, if equipped for LMIS or platform)	K
11		Ref	REAR TAIL LIGHT ASSY, (See ELECTRICAL SECTION for Breakdown)	
51	8008971	Ref	COUNTERWEIGHT INSTALLATION, (3509PS, 3512PS, 4008PS & 40.8), (not available to order, see items 52, 53 & 81 thru 84 for service)	
52	8005317	1	COUNTERWEIGHT, 365kg, (Left), (3509PS, 3512PS & 4008PS)	
52	8005317B	1	COUNTERWEIGHT, 365kg, (Left), (40.8)	
53	8005318	1	COUNTERWEIGHT, 365kg, (right), (3509PS, 3512PS & 4008PS)	
53	8005318B	1	COUNTERWEIGHT, 365kg, (right), (40.8)	
61	8008969	Ref	COUNTERWEIGHT INSTALLATION, (3513PS, 4009PS, 4012PS, 4017PS & 40.9), (not available to order, see items 62, 63 & 81 thru 84 for service)	
62	8005315	1	COUNTERWEIGHT, 750kg, (Left), (3513PS, 4009PS, 4012PS & 4017PS)	
62	8005315B	1	COUNTERWEIGHT, 750kg, (Left), (40.9)	
63	8005316	1	COUNTERWEIGHT, 750kg, (right), (3513PS, 4009PS, 4012PS & 4017PS)	
63	8005316B	1	COUNTERWEIGHT, 750kg, (right), (40.9)	
71	8009078	Ref	COUNTERWEIGHT INSTALLATION, (4013PS), (not available to order, see items 72, 73 & 81 thru 84 for service)	
72	8009124	1	COUNTERWEIGHT, 1170kg, (left), (4013PS)	
73	8009125	1	COUNTERWEIGHT, 1170kg, (right), (4013PS)	
81	0702037	8	HEX HD CAPSCREW, 20-2.50X200mm	
82	4812500	16	FLAT WASHER, 20mm	
83	3292007	8	HEX LOCKNUT, M20	
84	8009883	2	PROTECTING CAP	
	0275260	Ref	TOOL BOX INSTALLATION, (if equipped) (not available to order, see items 101 thru 104 for service)	A
101	0240147	1	TOOL BOX ASSY, (3508PS, 3509PS, 3512PS, 3513PS, 4008PS, 4009PS, 4012PS, 4013PS & 4017PS), (includes items 111 thru 119)	B
101	0240147B	1	TOOL BOX ASSY, (40.8 & 40.9), (includes items 111 thru 119)	
102	0760810	3	HEX HD CAPSCREW, 8-1.25X20mm	
103	5211900	3	RIPP WASHER, 8mm	
104	5220800	3	RIPP NUT, 8mm	
111	0240148	1	TOOL BOX, (3508PS, 3509PS, 3512PS, 3513PS, 4008PS, 4009PS, 4012PS, 4013PS & 4017PS)	
111	0240148B	1	TOOL BOX, (40.8 & 40.9)	
112	3180016	1	RUBBER SEAL	
113	3380559	1	TOOL BOX COVER, (3508PS, 3509PS, 3512PS, 3513PS, 4008PS, 4009PS, 4012PS, 4013PS & 4017PS)	
113	3380559B	1	TOOL BOX COVER, (40.8 & 40.9)	
114	5200608	3	RIPP BOLT, 6-36X16mm	
115	5220600	6	RIPP NUT, 6mm	
116	5220800	2	RIPP NUT, 8mm	
117	8002332	1	HINGE	
118	8006011	NLA	GAS SPRING, (no longer available, use 1001097296 for replacement)	

## SECTION 1 - FRAME AND ATTACHING PARTS

ITEM	PART NUMBER	QTY	DESCRIPTION	REV
118	1001097296	1	GAS SPRING	
119	8008701	1	LOCK	
201		Ref	CAB INSTALLATION, (not available to order, see items 202 thru 207 for service), (See CAB SECTION for Breakdown)	
202	1898686	AR	TRIM	
203	8001565	Ref	WEATHER STRIP	
205	3960927	AR	TRIM	
206	5200608	6	RIPP BOLT, 6-36X16mm	
207	3380567	1	CAB BOTTOM SHIELD	
	0273866	Ref	CAB STEP INSTALLATION, (17M), (not available to order, see items 301 thru 306 for service)	A
301	80383311	1	STAIR TREAD	
302	4240168	2	STEP STRAP	
303	3575424	4	STRAP COVER PLATE	
304	0701015	8	HEX HD CAPSCREW, 10-1.75X35mm	
305	3291007	8	HEX LOCKNUT, M10X1.5	
306	4812000	4	WASHER, 10mm	
401	8008721	12	PLASTIC CAP, (8M, 9M, 12M & 13M)	
401	8008721	8	PLASTIC CAP, (17M)	
	1001098946	Ref	WHEEL CHUCK INSTALLATION, (if equipped), (required in Germany), (not available to order, see items 501 thru 504 for service)	A
501	806253	1	WEDGE	
502	806264	1	WEDGE HOLDER	
503	2976912	4	PIPE	
504	5200814	4	RIPP BOLT, M8X30	
602	3575579	1	COVER PLATE, (17M)	
603	0761008	2	HEX HD CAPSCREW, M10X16, (17M)	
	1001109070	Ref	REAR HYDRAULIC BRACKET INSTALLATION, (8M & 9M, if equipped), (not available to order, see items 701 & 702 for service)	A
701	0761010	2	HEX HD CAPSCREW, M10X20, GR8.8	
702	1001109069	1	REAR HYDRAULIC BRACKET	
	8004888	1	LIFTING SUPPORT SYSTEM, (includes items 801 thru 804)	B
801	1001110099	1	BOOM SUPPORT CHANNEL ASSY	
802	909304	AR	TRIM	
803	1784861	2	GASKET	
804	443630	2	WING SCREW	

# SECTION 1 - FRAME AND ATTACHING PARTS

## FIGURE 1-3. AXLE AND FENDER INSTALLATION



PZ0891