



# **Illustrated Parts Manual**

**Model  
1250AJP**

**3121172**

November 1, 2014

**ANSI**

**CE**

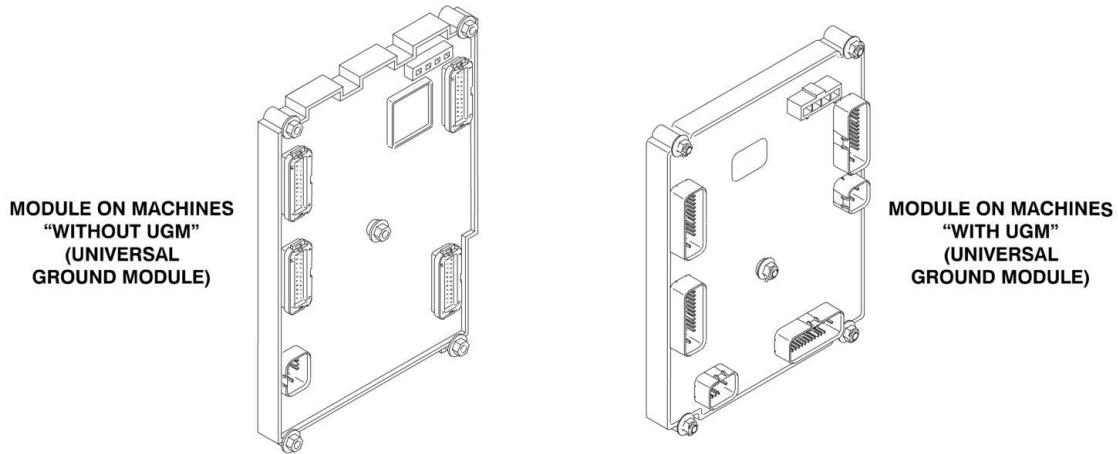


An Oshkosh Corporation Company



# REVISION LOG

## GROUND MODULE MODULE IDENTIFICATION



- March 30, 2004 - Original Issue Of Manual (Edited to B/M 0010609 Revision 3)
- July 15, 2004 - Revised Manual (Edited to B/M 0010609 Revision 4)
- October 28, 2004 - Revised Manual (Edited to B/M 0010609 Revision 5)
- February 24, 2005 - Revised Manual (Edited to B/M 0010609 Revision 7)
- January 5, 2006 - Revised Manual (Edited to B/M 0010609 Revision 14)
- April 30, 2006 - Revised Manual (Edited to B/M 0010609 Revision 15)
- August 15, 2006 - Revised Manual (Edited to B/M 0010609 Revision 16)
- January 15, 2007 - Revised Manual (Edited to B/M 0010609 Revision 17)
- June 1, 2007 - Revised Manual (Edited to B/M 0010609 Revision 21)
- October 20, 2007 - Revised Manual (Edited to B/M 0010609 Revision 25)
- January 15, 2008 - Revised Manual (Edited to B/M 0010609 Revision 26)
- July 31, 2008 - Revised Manual (Edited to B/M 0010609 Revision 32)
- January 25, 2009 - Revised Manual (Edited to B/M 0010609 Revision 32)
- July 27, 2009 - Revised Manual (Edited to B/M 0010609 Revision 41)
- December 15, 2009 - Revised Manual (Edited to B/M 0010609 Revision 48)
- July 22, 2010 - Revised Manual (Edited to B/M 0010609 Revision 52)
- February 23, 2011 - Revised Manual (Edited to B/M 0010609 Revision 58)
- May 25, 2011 - Revised Manual (Edited to B/M 0010609 Revision 58)
- August 19, 2011 - Revised Manual (Edited to B/M 0010609 Revision 60)
- January 23, 2012 - Revised Manual (Edited to B/M 0010609 Revision E)
- June 22, 2012 - Revised Manual (Edited to B/M 0010609 Revision E)
- August 17, 2012 - Revised Manual (Edited to B/M 0010609 Revision E)
- December 20, 2012 - Revised Manual (Edited to B/M 0010609 Revision E)
- April 19, 2013 - Revised Manual (Edited to B/M 0010609 Revision E)
- August 15, 2013 - Revised Manual (Edited to B/M 0010609 Revision E)

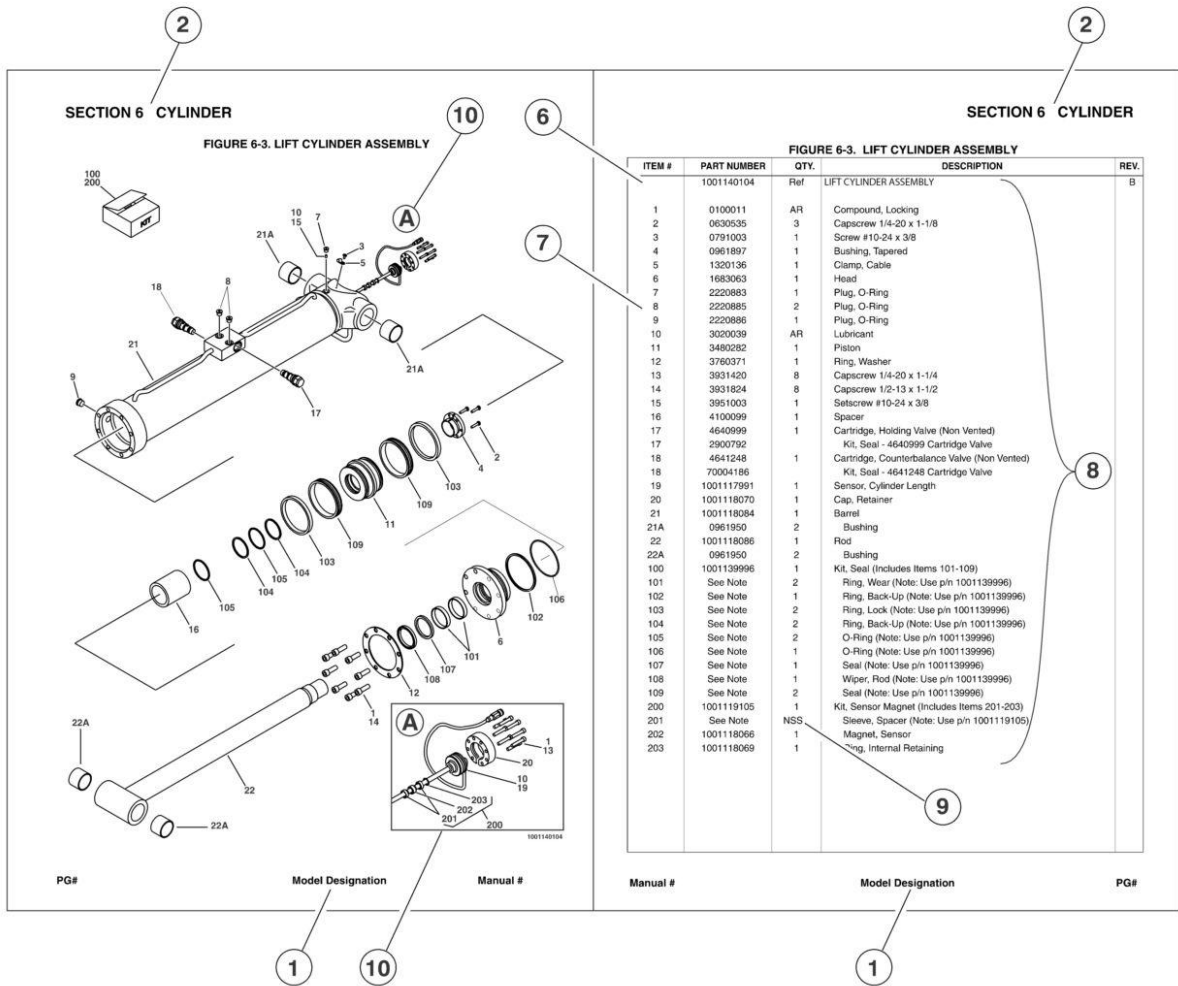
## REVISION LOG

August 15, 2013 - Revised Manual (Edited to B/M 0010609 Revision E)

October 25, 2013 - Revised Manual (Edited to B/M 0010609 Revision AI & 1001160110 Rev C)

November 1, 2014 - Revised Manual (Edited to B/M 1001160110 Rev D)

# GENERAL INFORMATION



## 1) MACHINE IDENTIFICATION

Machines are identified by model and in some cases a combination of models, serial number (SN) or regional standard (i.e ANSI, CE, CSA). Components may also be identified by SN or manufacturer. Common components that may be identified by these characteristics are engines and hydraulic components.

## 2) PARTS MANUAL ORGANIZATION

Product information in this manual is organized under section titles. Frame, Cylinder, Hydraulic and Electrical are a few examples. Each section is organized by figure and page number. The information within the Figure is then organized by item number, part number, description and corresponding illustration (s).

## 3) TABLE OF CONTENTS

A table of contents is found toward the beginning of the manual. Figure number, description and page number are provided for quick reference to the page containing the related information.

## 4) RECOMMENDED SPARE PARTS

The Recommended Spare Parts, located near the end of the manual, reference most frequently used maintenance parts.

## 5) PART NUMBER INDEX

A numerical index listing all part numbers and the corresponding page number(s) appears at the back of the manual.

## GENERAL INFORMATION

### 6) NON-SERVICED PARTS

In some instances, it is necessary to display non-serviced parts, assemblies or installations. In the case of assemblies and installations there will be a Ref in the Qty column. In case of parts that are not available for service within assemblies or components, there will be a NSS (Not Sold Separately) or NLA (No Longer Available) listed in the Qty. column of the manual.

### 7) PARTS LIST ITEM NUMBERS

Numbers shown in the item# column correspond to numbers used in the associated illustration (s). Item numbers which are missing from the sequence in the parts list are not used on that page

### 8) INDENTED PARTS DESCRIPTION

An indented part description is included in the item under which it is indented.

### 9) ABBREVIATION AND SYMBOLS

AC.....	.. Alternating Current	LCD.....	.. Liquid Crystal Display
ADE.....	..Advanced Design Electronics	LED.....	.. Light Emitting Diodes
ANSI.....	..American National Standards Institute	LH.....	.. Left Hand
AR.....	..As Required	LSS.....	..Load Sensing System
ASSY.....	.. Assembly	M(m).....	.. Metric/Meter
AUX.....	..Auxiliary	MM (mm).....	..Milimeter
AWG.....	..American Wire Gauge	mA.....	.. Milliamps
B/M.....	.. Bill of Material	NLA.....	.....No Longer Available
CE.....	..European Conformity	NPT.....	.. National Pipe Threads
CCW.....	..Counter Clockwise	NSS.....	.....Not Sold Separately
cm.....	..Centimeter	OD.....	..Outside Diameter
CW.....	..Clockwise	ORB.....	.. O-Ring Boss
CSA.....	..Canadian Standards Association	ORFS.....	.. O-Ring Face Seal
CYL.....	..Cylinder	OZ (oz).....	..Ounces
DIA.....	..Diameter	PG.....	..Page
DC.....	..Direct Current	P/N.....	..Part Number
EMS.....	.. Emergency Stop	qt.....	..Quarts
ENG.....	..Engine	QTY.....	..Quantity
FT (ft).....	..Feet	REF.....	..Reference
GA (Ga).....	..Gauge	REV.....	..Revision Level
HYD.....	..Hydraulic	RH.....	.. Right Hand
Hz.....	..Hertz	SAE.....	.. Society of Automotive Engineers
ID.....	..Inside Diameter	SN.....	..Serial Number
in.....	..inches	SPEC(S).....	.....Specifications
ISO.....	..International Organization for Standards	T/T.....	..Turntable
JIC.....	..Joint Industry Council	UGM.....	..Universal Ground Module
KG.....	..Kilogram	V.....	..Volts
L.....	..Liter	W.....	..Watts
LB.....	..Pounds	#.....	..Number

### 10) ILLUSTRATION REFERENCE LETTERS

When necessary, illustrations may contain reference letters that are intended to track information (i. e. hoses, harnesses) from one point to another or to track visual enlargement of components to show details that may be located in another area on the illustration.

*Note: Due to continuous product improvements, JLG Industries, Inc. reserves the right to make specification changes without prior notification. Contact JLG Industries, Inc. for updated information.*

# TABLE OF CONTENTS

SECTION 1 - FRAME.....	9
FIGURE 1-1. AXLE INSTALLATIONS .....	10
FIGURE 1-2. STEER INSTALLATION.....	14
FIGURE 1-3. TIRE AND WHEEL DRIVE INSTALLATION .....	16
FIGURE 1-4. DRIVE HUB ASSEMBLY (Prior to SN 0300079667) .....	20
FIGURE 1-5. DRIVE MOTOR ASSEMBLY (Prior to SN 0300079667).....	24
FIGURE 1-6. HUB AND MOTOR ASSEMBLY (SN 0300079667 through 0300083555) .....	26
FIGURE 1-7. HUB AND MOTOR ASSEMBLY (SN 0300083556 through 0300103906) .....	32
FIGURE 1-8. DRIVE HUB ASSEMBLY - BONFIGLIOLI (SN 0300103907 to Present) .....	36
FIGURE 1-9. DRIVE HUB ASSEMBLY - REGGIANA RIDUTTORI (SN 0300103907 to Present) .....	40
FIGURE 1-10. DRIVE MOTOR ASSEMBLY (SN 0300103907 to Present) .....	44
FIGURE 1-11. FRAME VALVES AND COVERS INSTALLATION .....	46
FIGURE 1-12. TRACTION VALVE ASSEMBLY (Prior to SN 0300103907) .....	50
FIGURE 1-13. TRACTION VALVE ASSEMBLY (SN 0300103907 to Present) .....	52
SECTION 2 - TURNTABLE .....	55
FIGURE 2-1. VALVE, BATTERY, HORN AND AUXILIARY PUMP INSTALLATIONS .....	56
FIGURE 2-2. MAIN VALVE ASSEMBLY .....	62
FIGURE 2-3. TURNTABLE SWING DRIVE AND BEARING INSTALLATION.....	66
FIGURE 2-4. SWING MOTOR/HUB ASSEMBLY .....	68
FIGURE 2-5. CATERPILLAR DIESEL ENGINE INSTALLATION.....	74
FIGURE 2-6. DEUTZ BF4M2011 TIER II AND TD2011 TIER III/IVI ENGINE INSTALLATIONS .....	82
FIGURE 2-7. DEUTZ TD2011 TIER IVI FLEX AND TIER IVI-PRE ENGINE INSTALLATION .....	92
FIGURE 2-8. DEUTZ TCD2.9L4 ENGINE INSTALLATIONS .....	100
FIGURE 2-9. PUMP ASSEMBLY (REXROTH) (CATERPILLAR ENGINE MACHINES) .....	112
FIGURE 2-10. PUMP ASSEMBLY (REXROTH) (DEUTZ ENGINE MACHINES).....	118
FIGURE 2-11. PUMP ASSEMBLY (SAUER TANDEM).....	124
FIGURE 2-12. PUMP ASSEMBLY (SAUER PISTON) .....	128
FIGURE 2-13. PUMP ASSEMBLY (SAUER GEAR).....	132
FIGURE 2-14. TANK INSTALLATION .....	134
FIGURE 2-15. ROTARY COUPLING AND COLLECTOR RING INSTALLATION.....	138
FIGURE 2-16. HYDRAULIC OIL COOLER INSTALLATION - CATERPILLAR AND DEUTZ BF4M2011 AND TD2011 ENGINES (OPTIONAL) .....	140
FIGURE 2-17. HYDRAULIC OIL COOLER INSTALLATION - DEUTZ TCD2.9L4 ENGINES (OPTIONAL) .....	142
FIGURE 2-18. GROUND CONTROLS INSTALLATION (WITHOUT UGM) .....	144
FIGURE 2-19. GROUND CONTROLS INSTALLATION (WITH UGM) .....	148
FIGURE 2-20. ACCESSORIES INSTALLATION.....	152
FIGURE 2-21. ENGINE TRAY JACK INSTALLATION .....	156
FIGURE 2-22. HOODS INSTALLATION .....	160
FIGURE 2-23. 2500W GENERATOR INSTALLATION - CATERPILLAR MACHINES (OPTIONAL).....	166
FIGURE 2-24. 2500W GENERATOR INSTALLATION - DEUTZ MACHINES (OPTIONAL) .....	170
FIGURE 2-25. 4000W GENERATOR INSTALLATION - DEUTZ MACHINES.....	174
FIGURE 2-26. 7500W SKYPOWER GENERATOR INSTALLATION - CATERPILLAR MACHINES (OPTIONAL) .....	178
FIGURE 2-27. 7500W SKYPOWER GENERATOR INSTALLATION - DEUTZ MACHINES (OPTIONAL).....	184
FIGURE 2-28. CLEARSKY TELEMATICS INSTALLATION (WITHOUT UGM) (OPTIONAL) .....	192
FIGURE 2-29. CLEARSKY TELEMATICS INSTALLATION (WITH UGM) (OPTIONAL).....	196
SECTION 3 - BOOM .....	199
FIGURE 3-1. BOOM INSTALLATION.....	200
FIGURE 3-2. TOWER BOOM ASSEMBLY .....	204
FIGURE 3-3. MAIN BOOM ASSEMBLY .....	208
FIGURE 3-4. ACTUATOR ASSEMBLIES.....	214
FIGURE 3-5. POWER TRACK AND BOOM CLAMPS INSTALLATION (TOWER BOOM) .....	218
FIGURE 3-6. POWER TRACK AND BOOM CLAMPS INSTALLATION (MAIN BOOM AND JIB).....	220
FIGURE 3-7. BOOM SENSORS AND SWITCHES INSTALLATION.....	224
FIGURE 3-8. PLATFORM SUPPORT AND CONTROL VALVES INSTALLATIONS.....	228
SECTION 4 - PLATFORM.....	231
FIGURE 4-1. PLATFORM COMPONENTS INSTALLATION .....	232
FIGURE 4-2. PLATFORM COMPONENTS INSTALLATION (FALL ARREST PLATFORM).....	236
FIGURE 4-3. PLATFORM CONSOLE ASSEMBLY.....	238
FIGURE 4-4. CONTROLLER ASSEMBLY (LIFT AND SWING).....	242

# TABLE OF CONTENTS

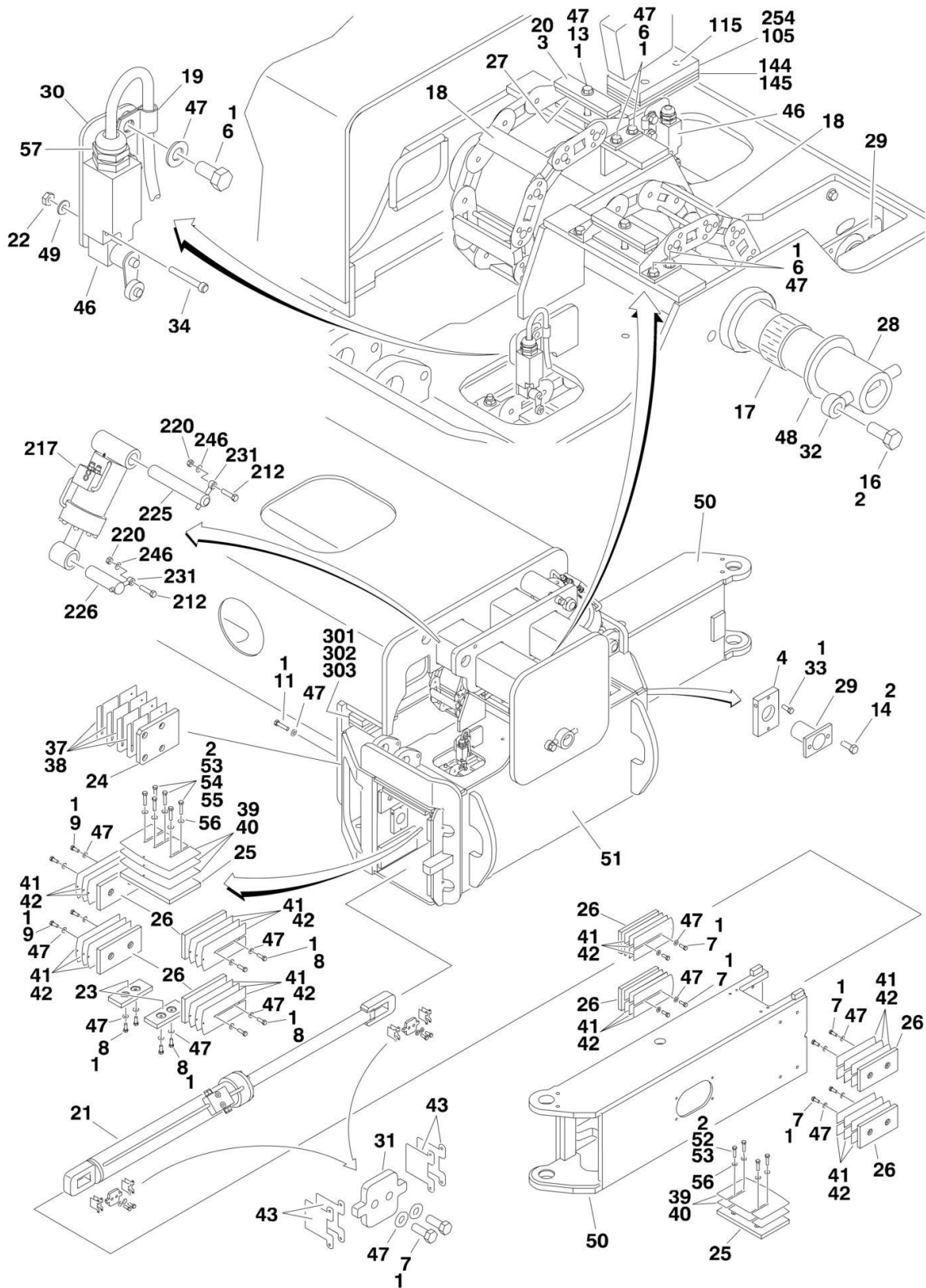
FIGURE 4-5. CONTROLLER ASSEMBLY (LIFT AND SWING) (SN 0300188514 to Present) .....	246
FIGURE 4-6. CONTROLLER ASSEMBLY (DRIVE AND STEER) .....	250
FIGURE 4-7. CONTROLLER ASSEMBLY (DRIVE AND STEER) (SN 0300188514 to Present).....	254
FIGURE 4-8. SOFT TOUCH SYSTEM INSTALLATION (OPTIONAL).....	256
 SECTION 5 - CYLINDER.....	 259
FIGURE 5-1. AXLE EXTENSION CYLINDER ASSEMBLY .....	260
FIGURE 5-2. AXLE LOCKOUT CYLINDER ASSEMBLY .....	262
FIGURE 5-3. PLATFORM LEVEL CYLINDER ASSEMBLY (Prior to SN 0300080030) .....	264
FIGURE 5-4. PLATFORM LEVEL CYLINDER ASSEMBLY (SN 0300080030 to Present) .....	266
FIGURE 5-5. LIFT CYLINDER ASSEMBLY (MAIN BOOM).....	268
FIGURE 5-6. LIFT CYLINDER ASSEMBLY (TOWER BOOM) .....	272
FIGURE 5-7. JIB CYLINDER ASSEMBLY .....	274
FIGURE 5-8. STEER CYLINDER ASSEMBLY .....	276
FIGURE 5-9. TELESCOPE CYLINDER ASSEMBLY (MAIN BOOM).....	278
FIGURE 5-10. TELESCOPE CYLINDER ASSEMBLY (TOWER BOOM) .....	282
 SECTION 6 - HYDRAULIC .....	 285
FIGURE 6-1. HYDRAULIC DIAGRAM - BOOM .....	286
FIGURE 6-2. HYDRAULIC DIAGRAM - DRIVE .....	290
FIGURE 6-3. HYDRAULIC DIAGRAM - OSCILLATING AXLE .....	294
FIGURE 6-4. HYDRAULIC DIAGRAM - STEER .....	296
FIGURE 6-5. HYDRAULIC DIAGRAM - TURNTABLE.....	298
FIGURE 6-6. HYDRAULIC DIAGRAM - AUXILIARY POWER MOTOR.....	302
FIGURE 6-7. HYDRAULIC DIAGRAM LIST.....	304
 SECTION 7 - ELECTRICAL.....	 307
FIGURE 7-1. ELECTRICAL DIAGRAM LIST .....	308
FIGURE 7-2. HARNESS COMPONENTS INSTALLATION (WITHOUT UGM) (Prior to SN 0300087575) .....	310
FIGURE 7-3. HARNESS COMPONENTS INSTALLATION (WITHOUT UGM) (SN 0300087575 to Present) .....	326
FIGURE 7-4. HARNESS COMPONENTS INSTALLATION (WITH UGM) .....	348
FIGURE 7-5. HARNESS COMPONENTS INSTALLATION (WITH UGM) .....	370
 SECTION 8 - DECALS .....	 391
FIGURE 8-1. DECAL INSTALLATION - ANSI SPEC (Prior to SN 0300089066) .....	392
FIGURE 8-2. DECAL INSTALLATION - ANSI SPEC (SN 0300089066 to Present) .....	396
FIGURE 8-3. DECAL INSTALLATION - ANSI EXPORT SPEC (Prior to SN 0300089066).....	400
FIGURE 8-4. DECAL INSTALLATION - ANSI EXPORT SPEC (SN 0300089066 to Present).....	404
FIGURE 8-5. DECAL INSTALLATION - AUSTRALIAN AND CE SPEC (Prior to SN 0300089066).....	410
FIGURE 8-6. DECAL INSTALLATION - AUSTRALIAN AND CE SPEC (SN 0300089066 to Present).....	414
 SECTION 9 - RECOMMENDED SERVICE PARTS STOCK .....	 417
FIGURE 9-1. MODEL 1250AJP STANDARD PARTS.....	418
FIGURE 9-2. MODEL 1250AJP VARIABLE PARTS .....	420
 SECTION 10 - SPECIAL OPTIONS .....	 421
FIGURE 10-1. SPECIAL OPTIONS .....	422
 PART NUMBER INDEX.....	 427



**SECTION 1 - FRAME**

# SECTION 1 - FRAME

## FIGURE 1-1. AXLE INSTALLATIONS



# SECTION 1 - FRAME

## FIGURE 1-1. AXLE INSTALLATIONS

ITEM	PART NUMBER	QTY	DESCRIPTION	REV
		Ref	<b>AXLE INSTALLATIONS - COMMON PARTS</b>	
	0271934	Ref	<b>Fixed Axle</b>	K
	0271521	Ref	<b>Oscillating Axle</b>	K
1	0100011	AR	Compound, Locking	
2	0100019	AR	Compound, Locking	
3	0100081	AR	Adhesive #454	
4	0363037	4	Bar, Stop	
6	0641606	40	Bolt 3/8in-16NC x 3/4in	
7	0641608	48	Bolt 3/8in-16NC x 1in	
8	0641609	32	Bolt 3/8in-16NC x 1-1/8in	
9	0641611	16	Bolt 3/8in-16NC x 1-3/8in	
11	0641613	8	Bolt 3/8in-16NC x 1-5/8in	
13		Ref	Bolt Options:	
13	0641620	4	Fixed Axle - Bolt 3/8in-16NC x 2-1/2in	
13	0641624	4	Oscillating Axle - Bolt 3/8in-16NC x 3in	
14	0641808	8	Bolt 1/2in-13NC x 1in	
16	0642214	1	Bolt 3/4in-10NC x 1-3/4in	
17	0962033	2	Bushing	
18	1180358	4	Carrier	
18	7024365	AR	24 in Section Repair Kit (Includes Inner and Outer Links, Joining Bars and Rollers, and Assembling Hardware)	
18	7024366	1	Mounting Bracket Kit (Includes Mounting Brackets for Both Ends, 1 Roller Assembly and Assembling Hardware)	
19	1320263	4	Clamp, Cable	
20	1320298	4	Clamp, Hose	
21	1684102	4	Axle Extension Cylinder Assembly (See CYLINDER SECTION for Breakdown)	
22	3310805	8	Locknut #8-32NC	
23	3340881	8	Pad, Wear	
24	3340907	2	Pad, Axle (Use p/n 1001161401)	
25	3340946	8	Pad, Wear (Use p/n 1001161402)	
26	3340932	32	Pad, Wear (Use p/n 1001161403)	
27	3340939	8	Pad, Rubber	
28	3422918	1	Pin	
29	3422960	4	Pin	
30	3573294	4	Plate	
31	3573335	8	Plate	
32	3841287	1	Keeper, Pin	
33	3900270	4	Bolt, Shoulder 1/2in -13NC x 1-1/2in	
34	3930820	8	Capscrew #8-32NC x 1-1/4in	
37	4071035	2	Shim #18 Gauge	
38	4071036	4	Shim #11 Gauge	
39	4071054	8	Shim #18 Gauge	
40	4071055	12	Shim #11 Gauge	
41	4071039	24	Shim #18 Gauge	
42	4071040	36	Shim #11 Gauge	
43	4071042	24	Shim #16 Gauge	
46		Ref	Switch, Limit Options:	
46	4360322	4	Switch, Limit (Use p/n 4360578) <b>(Prior to SN 0300074420)</b>	
46	4360549	4	Switch, Limit (Use p/n 4360578) <b>(SN 0300074420 through</b>	

## SECTION 1 - FRAME

ITEM	PART NUMBER	QTY	DESCRIPTION	REV
			<b>0300080868)</b>	
46	4360578	4	Switch, Limit <b>(SN 0300080869 to Present)</b>	
47	4711600	140	Flatwasher 3/8in Thin	
48	4740461	1	Thrustwasher	
49	4750800	8	Flatwasher #8 Regular	
50	4846637	4	Extension, Axle	
51	4846383	1	Box, Axle Pivot	
52	0681813	12	Bolt 1/2in-13NC x 1-5/8in (Grade 8)	
53	0681814	18	Bolt 1/2in-13NC x 1-3/4in (Grade 8)	
54	0681815	12	Bolt 1/2in-13NC x 1-7/8in (Grade 8)	
55	0681816	6	Bolt 1/2in-13NC x 2in (Grade 8)	
56	4711800	48	Flatwasher 1/2in Thin	
57	4460968	4	Connector, Strain Relief	
		Ref	<b>AXLE INSTALLATION - OPTIONAL PARTS</b>	
	0271934	Ref	<b>Fixed Axle</b>	K
105	0363076	2	Bar, Stop	
115	0641814	4	Bolt 1/2in-13NC x 1-3/4in	
144	4071049	6	Shim 11 Gauge	
145	4071050	4	Shim 16 Gauge	
	0271521	Ref	<b>Oscillating Axle</b>	K
201 to 211		Ref	(Illustration and Parts List Usage)	
212	0642020	4	Bolt 5/8in-11NC x 2-1/2in	
217	1684081	2	Oscillating Axle Cylinder Assembly (See CYLINDER SECTION for Breakdown)	
220	3312005	4	Locknut 5/8in-11NC	
225	3422833	2	Pin	
226	3422915	2	Pin	
231	3841258	4	Keeper, Pin	
246	4712000	4	Flatwasher 5/8in Thin	
254	3520054	4	Plug	
	0274106	Ref	<b>AXLE STOP BLOCKS INSTALLATION</b>	A
301	0100019	AR	Compound, Locking	
302	3931816	4	Capscrew, Socket Head 1/2in-13NC x 1in	
303	4220235	2	Block, Stop	



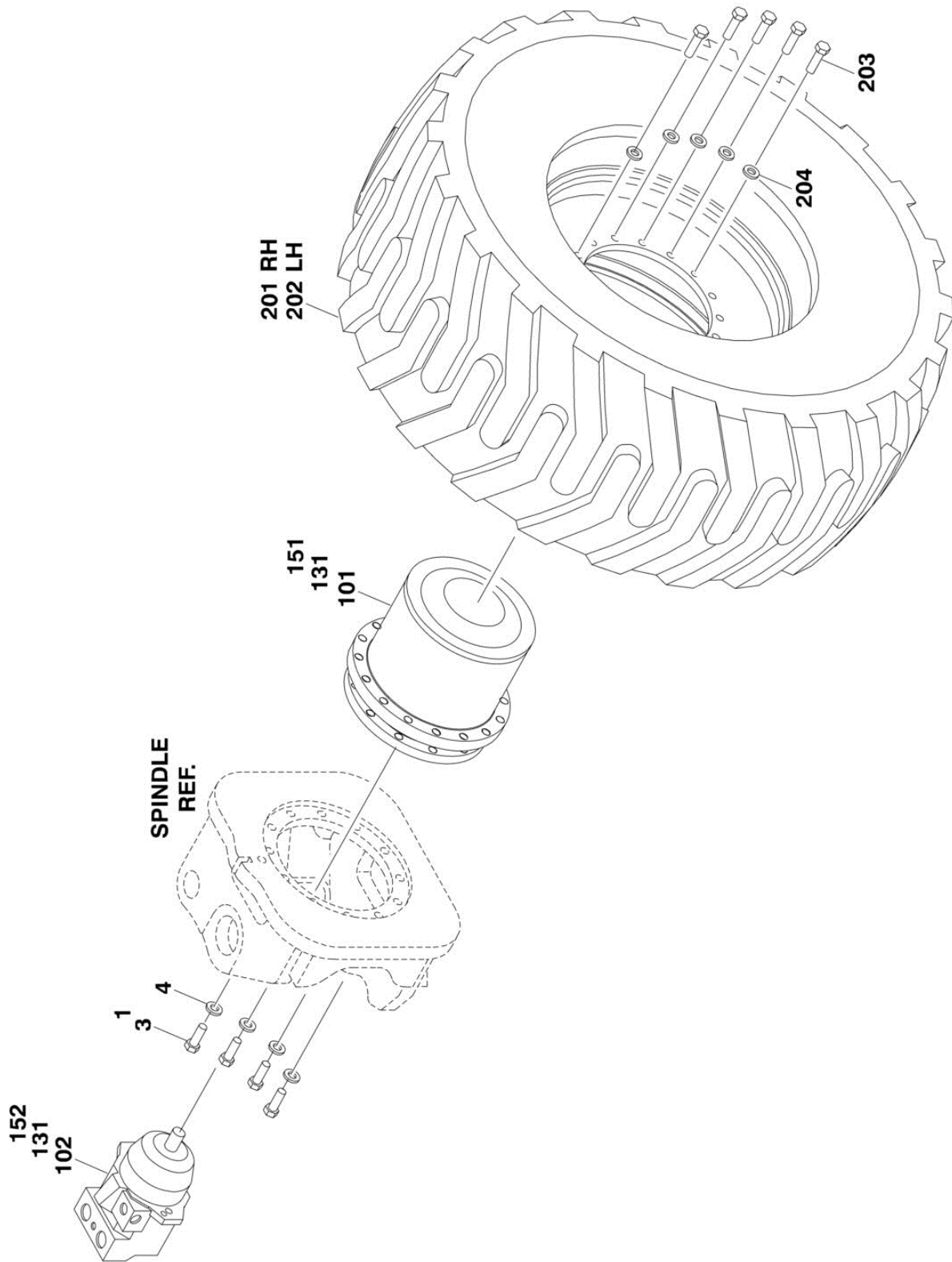


FIGURE 1-2. STEER INSTALLATION

ITEM	PART NUMBER	QTY	DESCRIPTION	REV
	0271520	Ref	<b>STEER INSTALLATION</b>	H
1	0100011	AR	Compound, Locking	
2	0100019	AR	Compound, Locking	
3	0100035	AR	Compound, Locking	
5	0630464	4	Screw, Button Head #10-24NC x 1/2in	
6	0641505	4	Bolt 5/16in-18NC x 5/8in	
7	0641511	4	Bolt 5/16in-18NC x 1-3/8in	
9	0641634	4	Bolt 3/8in-16NC x 4-1/4in	
10	0642016	4	Bolt 5/8in-11NC x 2in	
11	0962423	8	Bushing	
12	1671040	4	Cover, Sensor	
13	1684314	4	Steer Cylinder Assembly	
14	3311505	4	Locknut 5/16in-18NC	
15	3300464	4	Nut, Slotted	
17	3422917	4	Kingpin	
18	3422940	4	Pin, Steer Cylinder (Outer)	
19	3422941	4	Pin, Steer Cylinder (Inner)	
20		Ref	Pin, Sensor Options:	
20	3422942	4	Pin, Sensor (Use p/n 3423256) <b>(Prior to SN 0300090594)</b>	
20	3423256	4	Pin, Sensor <b>(SN 0300090594 to Present)</b>	
21	3451214	4	Pin, Cotter 3/8in x 3-1/2in	
22	3760383	4	Ring, Retaining	
23	3841258	4	Keeper, Pin	
25	3931020	8	Capscrew #10-24NC x 1-1/4in	
26	3931412	16	Capscrew 1/4in-20NC x 3/4in	
27	3932024	8	Capscrew 5/8in-11NC x 1-1/2in	
28		Ref	Spindle Options:	
28	4130387	4	Spindle (Use p/n 1001099632) <b>(Prior to SN 0300100131)</b>	
28	4130416	4	Spindle (Use p/n 1001099632) <b>(SN 0300100131 to Present)</b>	
29	4360505	4	Switch, Rotary Angle Sensor (Steer)	
30	4460914	4	Terminal	
31	4711500	12	Flatwasher 5/16in Thin	
32	4711800	4	Flatwasher 1/2in Thin	
33	4740181	4	Thrustwasher	
34	4740229	4	Thrustwasher	
35	4740505	8	Thrustwasher	
36	4751600	4	Flatwasher 3/8in Regular	
37	4755000	4	Flatwasher 2-1/2in Regular	
38		Ref	Arm, Steer Options:	
38	4846494	4	Arm, Steer (Use p/n 0200833) <b>(Prior to SN 0300090594)</b>	
38	0200833	4	Arm, Steer <b>(SN 0300090594 to Present)</b>	
39	0741606	8	Screw, Countersunk 3/8in-16NC x 3/4in	
40	1120549	4	Cap, Seal (Outer)	
41	1120550	4	Cap, Seal (Inner)	
42	3960551	4	Seal (Outer)	
43	3960552	4	Seal (Inner)	
44	0080277	4	Adapter, Angle Sensor Pilot <b>(SN 0300090594 to Present)</b>	
45	4750800	8	Flatwasher #8 Regular	

# SECTION 1 - FRAME

## FIGURE 1-3. TIRE AND WHEEL DRIVE INSTALLATION





# SECTION 1 - FRAME

## FIGURE 1-3. TIRE AND WHEEL DRIVE INSTALLATION

ITEM	PART NUMBER	QTY	DESCRIPTION	REV
		Ref	<b>WHEEL DRIVE INSTALLATION</b>	
	0271522	Ref	<b>With Bonfiglioli Drive Hub (Prior to SN 0300103907)</b>	E
	0275685	Ref	<b>With Bonfiglioli Drive Hub (SN 0300103907 to Present)</b>	B
	1001104324	Ref	<b>With Reggiana Riduttori Drive Hub</b>	A
1	0100019	AR	Compound, Locking	
3	0701617	48	Bolt M16 x 45mm (12 Per Wheel)	
4	4892000	48	Flatwasher 5/8in Hardened (12 Per Wheel)	
	0272258	Ref	<b>HUB AND MOTOR ASSEMBLY (Prior to SN 0300079667)</b>	B
		Ref	<b>Note: Original Equipment hub may have been replaced with Service Replacement. Refer to tag on hub for identification before ordering parts.</b>	
101	2780248	4	Drive Hub Assembly (Use p/n 2780283 - See DRIVE HUB ASSEMBLY for Breakdown. See HUB AND MOTOR ASSEMBLY for replacement components for Service Replacement p/n 2780283.)	
102	3160291	4	Drive Motor Assembly (See DRIVE MOTOR ASSEMBLY for Breakdown)	
131		Ref	<b>HUB AND MOTOR ASSEMBLY (SN 0300079667 through 0300103906)</b>	
		Ref	<b>Note: For Machines Built S/N 0300079596 to S/N 0300083552, Original Equipment may have been replaced with Service Replacement. Refer to tag on hub for identification before ordering parts.</b>	
131	2780279	4	Hub and Motor Assembly (Use p/n 2780284 - See HUB AND MOTOR ASSEMBLY for Breakdown. See HUB AND MOTOR ASSEMBLY for replacement components for Service Replacement p/n 2780284.) <b>(SN 0300079667 through 0300083555)</b>	
131	2780284	4	Hub and Motor Assembly (See HUB AND MOTOR ASSEMBLY for Breakdown) <b>(SN 0300083556 through 0300103906)</b>	
		Ref	<b>HUB AND MOTOR ASSEMBLY (SN 0300103907 to Present)</b>	
	2780286	Ref	<b>With Bonfiglioli Drive Hub</b>	
	1001104315	Ref	<b>With Reggiana Riduttori Drive Hub</b>	
151		Ref	Drive Hub Assembly Options:	
		Ref	<b>Note: Various brands used on Machines Built S/N 0300103907 to Present. When replacing complete hub, note that all 4 hubs must be the same brand.</b>	
		Ref	<b>Note: Various brands used on Machines Built S/N 0300103907 to Present. Identify brand before ordering replacement parts.</b>	
151	2780290	4	Bonfiglioli Hub (Use p/n 1001093243) (See DRIVE HUB ASSEMBLY - BONFIGLIOLI for Breakdown) <b>(SN 0300103907 to Present)</b>	
151	1001104325	4	Reggiana Riduttori Hub (See DRIVE HUB ASSEMBLY - REGGIANA RIDUTTORI for Breakdown) <b>(Prior to SN 0300079667)</b>	
152	3160339	4	Drive Motor Assembly (See DRIVE MOTOR ASSEMBLY for Breakdown)	
		Ref	<b>TIRE AND WHEEL INSTALLATIONS</b>	
	0271852	Ref	<b>Foam-Filled Tires</b>	B
	1001115961	Ref	<b>Solid Tires</b>	A
		Ref	<b>Note: Assemblies may require ballast/foam filling to manufacturer's specifications prior to installing on a machine. Refer to Operation and Safety or Service and Maintenance Manuals. Purchase individual tire and/or rim only if able to foam fill tire and wheel assembly, otherwise, purchase complete assembly.</b>	

## SECTION 1 - FRAME

ITEM	PART NUMBER	QTY	DESCRIPTION	REV
201		Ref	Right Side Tire and Wheel Assembly Options:	
201	0272055	2	Foam-Filled Tire and Wheel Assembly	
201	1001112716	2	Solid Tire and Wheel Assembly	
202		Ref	Left Side Tire and Wheel Assembly Options:	
202	0272056	2	Foam-Filled Tire and Wheel Assembly	
202	1001112669	2	Solid Tire and Wheel Assembly	
203	0701619	64	Bolt M16 x 55mm (16 Per Wheel)	
204	4892000	64	Flatwasher 5/8in Hardened (16 Per Wheel)	



**SECTION 1 - FRAME**

**FIGURE 1-4. DRIVE HUB ASSEMBLY (Prior to SN 0300079667)**

