
Illustrated Parts Manual

Model 1044C-54 Series II

S/N 0160009654 & After
including 0160008714

31200069

*Revised
July 8, 2008*



EFFECTIVITY PAGE

March 18, 2005 - A - Original Issue Of Manual

May 11, 2006 - B - Revised Manual

July 8, 2008 - C - Revised Manual (Manual edited to - 0010667 Revision 18)

EFFECTIVITY PAGE

TABLE OF CONTENTS

| FIGURE NO. | TITLE | PAGE NO. |
|---|--|------------|
| SECTION 1 – | | |
| FRAME & ATTACHING PARTS | | 1-1 |
| 1-1 | Main Frame Assembly | 1-2 |
| 1-2 | Outrigger Assembly | 1-6 |
| SECTION 2 – | | |
| BOOM | | 2-1 |
| 2-1 | First Boom Section | 2-2 |
| 2-2 | Bearing Pads, Spacers & Shims, (First Boom Section) | 2-6 |
| 2-3 | Second Boom Section | 2-8 |
| 2-4 | Bearing Pads, Spacers & Shims, (Second Boom Section) | 2-10 |
| 2-5 | Third Boom Section | 2-12 |
| 2-6 | Fourth Boom Section | 2-16 |
| 2-7 | Transfer Carriage/Boom Cradle Assembly | 2-18 |
| 2-8 | Quick Attach Group Assembly | 2-20 |
| SECTION 3 – | | |
| ATTACHMENTS | | 3-1 |
| 3-1 | 50" & 74" Carriage Assembly | 3-2 |
| 3-2 | 50" & 74" Tilt Carriage Assembly | 3-4 |
| 3-3 | 72" Swing Carriage Assembly | 3-6 |
| 3-4 | Utility Bucket | 3-8 |
| 3-5 | 50" Single Fork Positioning Carriage Assembly | 3-10 |
| 3-6 | 50" Dual Fork Positioning Carriage Assembly | 3-12 |
| 3-7 | 10' Truss Boom Assembly | 3-14 |
| 3-8 | 10' Truss Boom Assembly w/Winch | 3-16 |
| 3-9 | Carriage Assembly w/8' Vertical Mast (Non-Tilt) | 3-18 |
| 3-10 | Carriage Assembly w/8' Vertical Mast (Tilt) | 3-20 |
| 3-11 | 8' Vertical Mast Assembly | 3-22 |
| 3-12 | Forks | 3-24 |
| 3-13 | Fork Mounted Platform | 3-26 |
| 3-14 | Sweeper Assembly | 3-28 |
| SECTION 4 – | | |
| ENGINE & ATTACHING PARTS | | 4-1 |
| 4-1 | Engine Assembly | 4-2 |
| 4-2 | John Deere Engine | 4-14 |
| 4-3 | Radiator Assembly | 4-18 |
| 4-4 | Air Cleaner Installation | 4-22 |
| 4-5 | Exhaust Assembly | 4-24 |
| SECTION 5 – | | |
| DRIVE TRAIN | | 5-1 |
| 5-1 | Drive Train Components | 5-2 |

TABLE OF CONTENTS

| FIGURE NO. | TITLE | PAGE NO. |
|------------|---|----------|
| 5-2 | Front Axle Assembly | 5-4 |
| 5-3 | Front Axle - Input | 5-6 |
| 5-4 | Front Axle - Limited Slip Differential | 5-10 |
| 5-5 | Front Axle - Axle Casing | 5-12 |
| 5-6 | Front Axle - M-Disc Brake | 5-14 |
| 5-7 | Front Axle - Brake | 5-18 |
| 5-8 | Front Axle - Joint Housing | 5-20 |
| 5-9 | Front Axle - Planetary Drive | 5-22 |
| 5-10 | Rear Axle Assembly | 5-24 |
| 5-11 | Rear Axle - Input | 5-26 |
| 5-12 | Rear Axle - Differential | 5-30 |
| 5-13 | Rear Axle - Axle Casing | 5-32 |
| 5-14 | Rear Axle - M-Disc Brake | 5-34 |
| 5-15 | Rear Axle - Brake | 5-38 |
| 5-16 | Rear Axle - Joint Housing | 5-40 |
| 5-17 | Rear Axle - Planetary Drive | 5-44 |
| 5-18 | ZF Transmission - Converter & Input | 5-46 |
| 5-19 | ZF Transmission - Gearbox Housing | 5-48 |
| 5-20 | ZF Transmission - Reversing Gear KV | 5-50 |
| 5-21 | ZF Transmission - Reversing Gear KR | 5-52 |
| 5-22 | ZF Transmission - Coupling Group K1 | 5-54 |
| 5-23 | ZF Transmission - Coupling Group K2 | 5-56 |
| 5-24 | ZF Transmission - Coupling Group K3 | 5-58 |
| 5-25 | ZF Transmission - Coupling Group K4 | 5-60 |
| 5-26 | ZF Transmission - Output | 5-62 |
| 5-27 | ZF Transmission - Control Unit | 5-64 |
| 5-28 | ZF Transmission - Gearshift System | 5-66 |
| 5-29 | ZF Transmission - Oil Pump, Filter & Dipstick | 5-70 |
| 5-30 | Drive Shaft | 5-72 |
| 5-31 | Tires and Rims | 5-74 |

SECTION 6 –

| | | |
|------------|----------------------------------|------------|
| CAB | | 6-1 |
| 6-1 | Operators Compartment Assembly | 6-2 |
| 6-2 | Cab Enclosure Kit | 6-4 |
| 6-3 | Windshield Wiper Assembly | 6-6 |
| 6-4 | Windshield Assembly | 6-8 |
| 6-5 | Window Assembly | 6-10 |
| 6-6 | Door Assembly | 6-12 |
| 6-7 | Insulation Installation | 6-14 |
| 6-8 | Instrument Panel Assembly | 6-16 |
| 6-9 | Operator's Seat | 6-18 |
| 6-10 | Heater & Air Conditioning System | 6-22 |
| 6-11 | Valve Plate Components Assembly | 6-26 |

TABLE OF CONTENTS

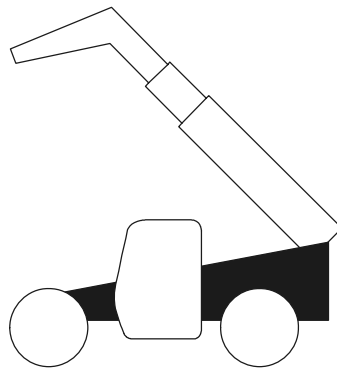
| FIGURE NO. | TITLE | PAGE NO. |
|--------------------|--|------------|
| SECTION 7 – | | |
| | CONTROLS | 7-1 |
| 7-1 | Joystick Control Valve | 7-2 |
| 7-2 | 3 Handle Single Axis Control Valve Assembly | 7-4 |
| 7-3 | Steer Column Assembly | 7-6 |
| 7-4 | Brake Valve Assembly | 7-8 |
| 7-5 | Accelerator Pedal | 7-10 |
| SECTION 8 – | | |
| | HYDRAULIC CIRCUITS | 8-1 |
| 8-1 | Pump, Suction - Return | 8-2 |
| 8-2 | Boom Hydraulic Cylinder | 8-4 |
| 8-3 | Hoist & Rear Carriage Tilt | 8-6 |
| 8-4 | Second Auxiliary Circuit | 8-8 |
| 8-5 | Transfer Cylinder | 8-10 |
| 8-6 | Outrigger Cylinder & Joystick | 8-12 |
| 8-7 | Frame Tilt & Rear Axle Stabilizer | 8-14 |
| 8-8 | Steering Cylinder | 8-18 |
| 8-9 | Joystick Control Circuit | 8-20 |
| 8-10 | Service Brake Circuit | 8-22 |
| 8-11 | Park Brake Circuit | 8-24 |
| 8-12 | Test Port Hydraulic Assembly | 8-26 |
| SECTION 9 – | | |
| | HYDRAULIC COMPONENTS | 9-1 |
| 9-1 | Front Carriage Tilt Cylinder | 9-2 |
| 9-2 | Rear Carriage Tilt Cylinder | 9-4 |
| 9-3 | Frame Tilt Cylinder | 9-6 |
| 9-4 | Hoist Cylinder | 9-8 |
| 9-5 | Boom Extension Cylinder | 9-10 |
| 9-6 | Transfer Cylinder | 9-12 |
| 9-7 | Outrigger Cylinder | 9-14 |
| 9-8 | Rear Stabilizer Cylinder | 9-16 |
| 9-9 | Steering Cylinder | 9-18 |
| 9-10 | Hydraulic Control Valve Assembly - Mid-Inlet | 9-20 |
| 9-11 | Valve Section Assembly - Boom Hoist/Boom Extension | 9-22 |
| 9-12 | Valve Section Assembly - Fork Tilt/Outrigger/Transfer/Auxiliary/Frame Tilt | 9-24 |
| 9-13 | Relief Valve Assembly | 9-26 |
| 9-14 | Relief Valve Assembly - Mid-Inlet | 9-28 |
| 9-15 | Tandem Pump | 9-30 |
| 9-16 | Accumulator Charge Valve | 9-32 |
| 9-17 | 6-Port Circuit Selector Valve Assembly | 9-34 |
| 9-18 | Hydraulic Return Line Filter Assembly | 9-36 |
| 9-19 | Pressure Filter Assembly | 9-38 |

TABLE OF CONTENTS

| FIGURE NO. | TITLE | PAGE NO. |
|---|--|-----------------|
| 9-20 | Inline Filter Assembly | 9-40 |
| 9-21 | Accumulator Assembly | 9-42 |
| 9-22 | Rear Axle Stabilizer Control Valve, (under cab) | 9-44 |
| 9-23 | Rear Axle Stabilizer Valve, (on rear axle) | 9-46 |
| 9-24 | Fuel/Hydraulic Tank Assy | 9-48 |
| 9-25 | Boom Extend Lockout Valve Assembly | 9-50 |
| 9-26 | Park Brake Valve Assembly | 9-52 |
| SECTION 10 – | | |
| | ELECTRICAL | 10-1 |
| 10-1 | Frame Harness Installation | 10-2 |
| 10-2 | Outrigger/Boom Extend Lockout Harness Installation | 10-6 |
| 10-3 | Engine Electrical Group | 10-8 |
| 10-4 | Transmission Harness Installation | 10-10 |
| 10-5 | Operator's Compartment Electrical Group Installation | 10-12 |
| 10-6 | Fuses, Relays & Buzzer Mounting Panel | 10-14 |
| SECTION 11 – | | |
| | DECALS | 11-1 |
| 11-1 | Decal Group | 11-2 |
| SECTION 12 – | | |
| | OPTIONS | 12-1 |
| 12-1 | Worklight Option Installation | 12-2 |
| 12-2 | Roadway Light Option Installation | 12-8 |
| 12-3 | Strobe/Rotating Beacon Light Option Installation | 12-16 |
| 12-4 | Tilting Carriage Cylinder | 12-20 |
| 12-5 | Tower Cylinder | 12-22 |
| 12-6 | Fork Positioning Cylinder | 12-24 |
| 12-7 | Lockable Engine Side Panels Option | 12-26 |
| 12-8 | Battery Cold Start Option | 12-28 |
| SECTION 13 – | | |
| | RECOMMENDED SPARE PARTS | 13-1 |
| SECTION 14 – PART NUMBER INDEX | | |
| | | 14-1 |

SECTION 1

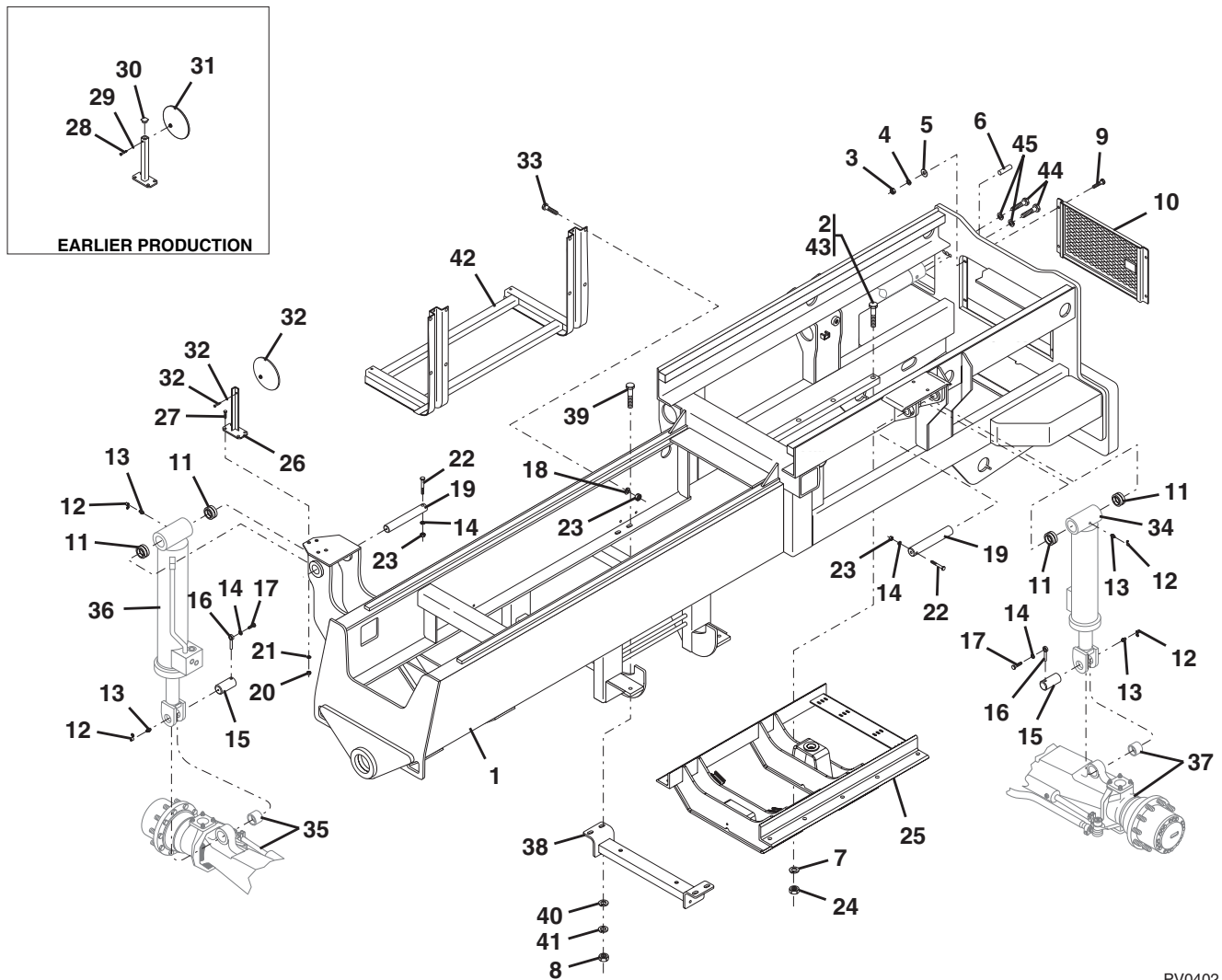
FRAME & ATTACHING PARTS





FRAME & ATTACHING PARTS

Figure 1-1 Main Frame Assembly



PV0402

FRAME & ATTACHING PARTS



Figure 1-1 Main Frame Assembly

| Item | Part Number | Qty. | Description | Rev. |
|------|-------------|------|--|------|
| 1 | 2360719 | 1 | MAIN FRAME | |
| 2 | 10700784 | 10 | HEX HD CAPSCREW, 3/4-16X3-3/4, GR8, (loctite & torque to 465 lb-ft) | |
| 3 | 10701507 | 4 | HEX NUT, 5/16-18 | |
| 4 | 10701309 | 4 | LOCKWASHER, 5/16 | |
| 5 | 10701403 | 4 | FLAT WASHER, 5/16 | |
| 6 | | 1 | DOWEL PIN, 3/4X2, (see Figure 9-6 for details) | |
| 7 | 90027473 | 10 | HARDWASHER, 3/4 | |
| 8 | 10701512 | 4 | HEX NUT, 5/8-11 | |
| 9 | 10700104 | 4 | HEX HD CAPSCREW, 5/16-18X1 | |
| 10 | 10236818 | 1 | GRILLE | |
| 11 | 10116228 | 4 | CYLINDER BUSHING | |
| 12 | 10732689 | 4 | GREASE FITTING COVER | |
| 13 | 10716611 | 4 | GREASE FITTING | |
| 14 | 4761800 | 4 | WASHER, 1/2 | |
| 15 | 3423197 | 2 | FRAME TILT & OSCILLATION LOCK CYLINDER PIN, (lower) | |
| 16 | 3841709 | 2 | LOCK PIN | |
| 17 | 0641810 | 2 | HEX HD CAPSCREW, 1/2-13X1-1/4 | |
| 18 | 10701312 | 8 | LOCKWASHER, 1/2 | |
| 19 | 10124732 | 2 | FRAME TILT & OSCILLATION LOCK CYLINDER PIN, (upper) | |
| 20 | 10701508 | 4 | HEX NUT, 3/8-16 | |
| 21 | 10701310 | 4 | LOCKWASHER, 3/8 | |
| 22 | 0641832 | 2 | HEX HD CAPSCREW, 1/2-13X4 | |
| 23 | 10701510 | 10 | HEX NUT, 1/2-13 | |
| 24 | 3282201 | 10 | HEX NUT, 3/4-16, GR8 | |
| 25 | 4341026 | 1 | SUBFRAME - 4 CYLINDER ENGINE | |
| 26 | 10338513 | 1 | MIRROR BRACKET | |
| 27 | 10700205 | 4 | HEX HD CAPSCREW, 3/8-16X1-1/4 | |
| 28 | 10700107 | 1 | HEX HD CAPSCREW, 5/16-16X1-3/4, (S/N 0160009654 thru 0160011418 including 0160008714) | |
| 29 | 10701309 | 1 | LOCKWASHER, 5/16, (S/N 0160009654 thru 0160011418 including 0160008714) | |
| 30 | 10837299 | 1 | END CAP PLUG, (S/N 0160009654 thru 0160011418 including 0160008714) | |
| 31 | | 1 | CONVEX MIRROR, (S/N 0160009654 thru 0160011418 including 0160008714), (no longer available, order convex mirror service kit) | |
| 32 | 8866625 | 1 | CONVEX MIRROR, (S/N 0160011439 & After), (includes mounting hardware) | |
| | 88521005 | 1 | LOCKNUT, 5/16 | |
| | 88551010 | 2 | LOCKWASHER, 5/16 | |
| 33 | 10700404 | 8 | HEX HD CAPSCREW, 1/2-13X1-1/2 | |
| 34 | | Ref | REAR STABILIZER CYLINDER, (see Figure 9-8 for details) | |
| 35 | | Ref | FRONT AXLE ASSY, (see Figure 5-2 for details) | |
| 36 | | Ref | FRAME TILT CYLINDER, (see Figure 9-3 for details) | |
| 37 | | Ref | REAR AXLE ASSY, (see Figure 5-10 for details) | |
| 38 | 4341020 | 1 | TRANSMISSION MOUNT WELDMENT | |
| 39 | 10700605 | 4 | HEX HD CAPSCREW, 5/8-11X2-1/4, GR5 | |
| 40 | 10701408 | 4 | PLAIN WASHER, 5/8 | |
| 41 | 10701314 | 4 | LOCKWASHER, 3/8 | |
| 42 | | Ref | TANK SUPPORT MOUNT, (see Figure 9-24 for details) | |
| 43 | 0100071 | AR | LOCTITE, #262, (apply to item 2) | |
| 44 | 10700703 | 2 | HEX HD CAPSCREW, 3/4-10X2-1/4, GR5 | |



FRAME & ATTACHING PARTS

Figure 1-1 Main Frame Assembly

| Item | Part Number | Qty. | Description | Rev. |
|------|-------------|------|---|------|
| 45 | 10701315 | 2 | LOCKWASHER, 3/4 | |
| 46 | 10717809 | 2 | CLAMP | |
| | 10732579S | 1 | CONVEX MIRROR SERVICE KIT, (includes item 32) | |

FRAME & ATTACHING PARTS

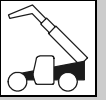


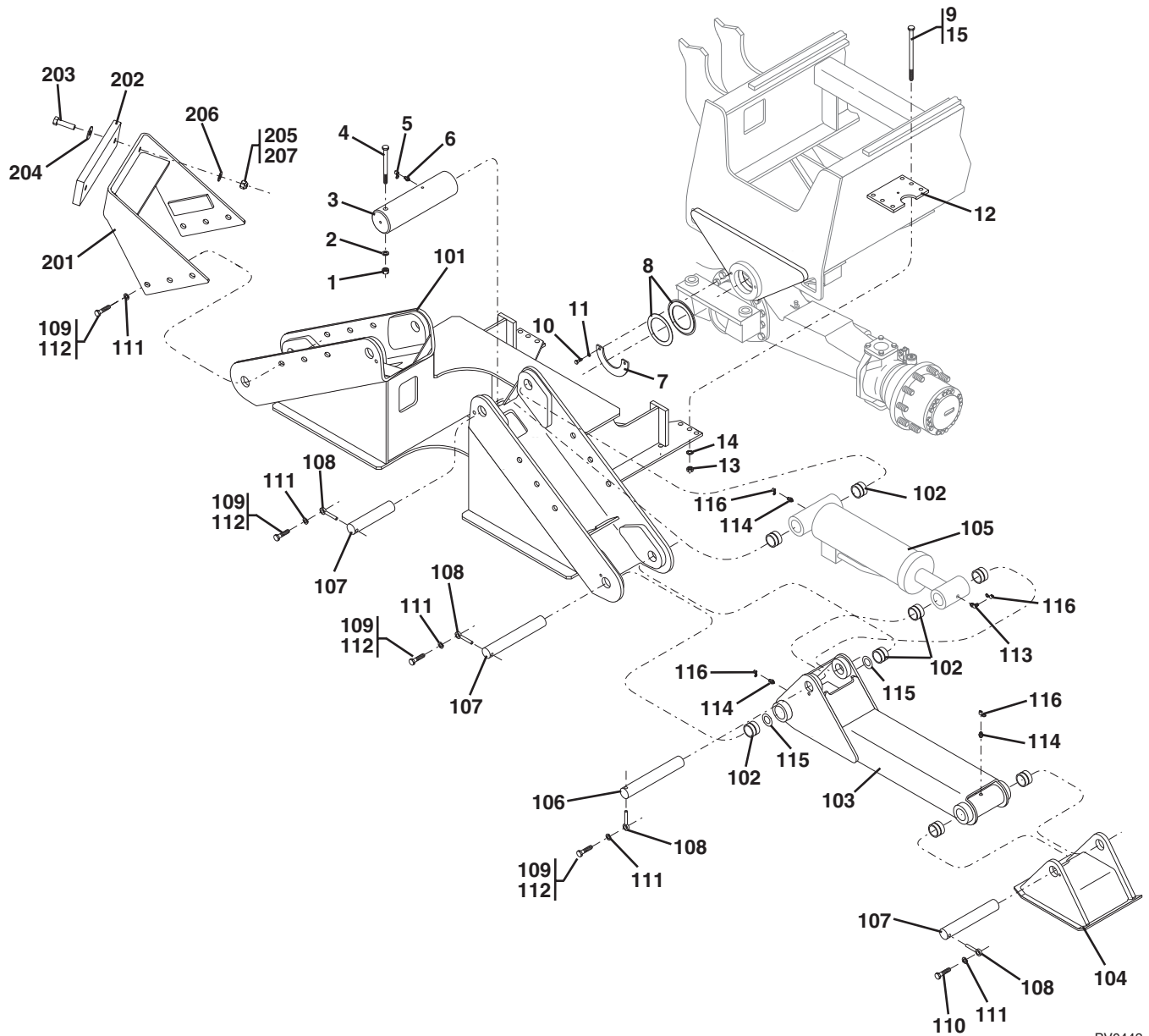
Figure 1-1 Main Frame Assembly

| Item | Part Number | Qty. | Description | Rev. |
|------|-------------|------|-------------|------|
| | | | | |



FRAME & ATTACHING PARTS

Figure 1-2 Outrigger Assembly



PV0442

FRAME & ATTACHING PARTS



Figure 1-2 Outrigger Assembly

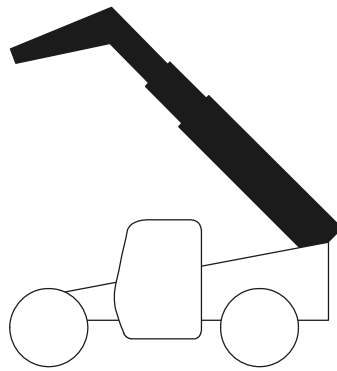
| Item | Part Number | Qty. | Description | Rev. |
|------|-------------|------|--|------|
| 1 | 3312201 | 1 | HEX NUT, 3/4-10 | |
| 2 | 4762200 | 1 | WASHER, 3/4 | |
| 3 | 3423213 | 1 | CENTER SHAFT | |
| 4 | 0642256 | 1 | HEX HD CAPSCREW, 3/4-10X7 | |
| 5 | 10732689 | 1 | GREASE FITTING COVER | |
| 6 | 10715272 | 1 | GREASE FITTING, 1/8 | |
| 7 | 10167750 | 1 | BUSHING RETAINER | |
| 8 | 10139945 | AR | SHIM, 16 GA. | |
| | 10139946 | AR | SHIM, 20 GA. | |
| | 10139947 | AR | SHIM, 24 GA. | |
| 9 | 8310475 | 12 | HEX HD CAPSCREW, 3/4-10X10, GR8 | |
| 10 | 0641608 | 2 | HEX HD CAPSCREW, 3/8-16X3/4 | |
| 11 | 4761600 | 2 | WASHER, 3/8 | |
| 12 | 3575851 | 2 | MOUNTING PLATE | |
| 13 | 3272205 | 12 | HEX NUT, 3/4-10, GR8 | |
| 14 | 8307703 | 12 | PLAIN WASHER, 3/4 | |
| 15 | 0100011 | AR | LOCTITE, (apply to item 9) | |
| | 4210021 | Ref. | OUTRIGGER ASSY | E |
| 101 | 4210020 | 1 | OUTRIGGER FRAME | |
| 102 | 10116228 | 16 | BUSHING | |
| 103 | 10239253 | 2 | OUTRIGGER LEG, (includes item 2) | |
| 104 | 10266234 | 2 | FOOT PAD | |
| 105 | | Ref | OUTRIGGER CYLINDER, (see Figure 9-7 for details) | |
| 106 | 10165360 | 2 | OUTRIGGER CYLINDER PIN | |
| 107 | 10165359 | 6 | OUTRIGGER LEG & CYLINDER PIN | |
| 108 | 10232432 | 8 | LOCK PIN | |
| 109 | 0642014 | 18 | HEX HD CAPSCREW, 5/8-11X1-3/4, (torque to 140 lb-ft) | |
| 110 | 0642012 | 2 | HEX HD CAPSCREW, 5/8-11X1-1/2 | |
| 111 | 4762000 | 20 | WASHER, 5/8 | |
| 112 | 0100011 | AR | LOCTITE, (apply to item 109) | |
| 113 | 10712339 | 2 | GREASE FITTING, 45 DEGREES | |
| 114 | 10716611 | 6 | GREASE FITTING | |
| 115 | 1101704 | AR | SHIM, 14 GA. | |
| 116 | 10732689 | 8 | GREASE FITTING COVER | |
| | 0903209 | Ref. | OUTRIGGER STOP BRACKET ASSY | A |
| 201 | 4220249 | 2 | STOP WELDMENT | |
| 202 | 4220248 | 2 | RUBBER PAD | |
| 203 | 0642019 | 4 | HEX HD CAPSCREW, 5/8-11X2-3/8, (torque to 10-20 lb-ft) | |
| 204 | 4752000 | 4 | PLAIN WASHER, 5/8 | |
| 205 | 8305643 | 4 | HEX LOCKNUT, 5/8-11 | |
| 206 | 4712000 | 4 | PLAIN WASHER, 5/8 | |
| 207 | 0100011 | AR | LOCTITE, (apply to item 205) | |



FRAME & ATTACHING PARTS

This Page Intentionally Left Blank

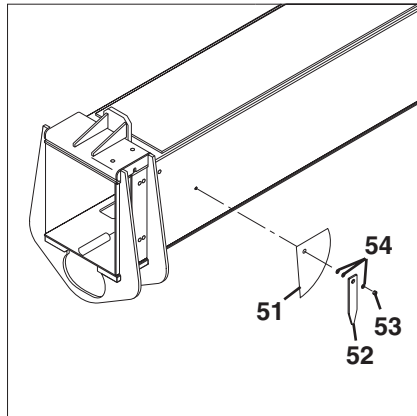
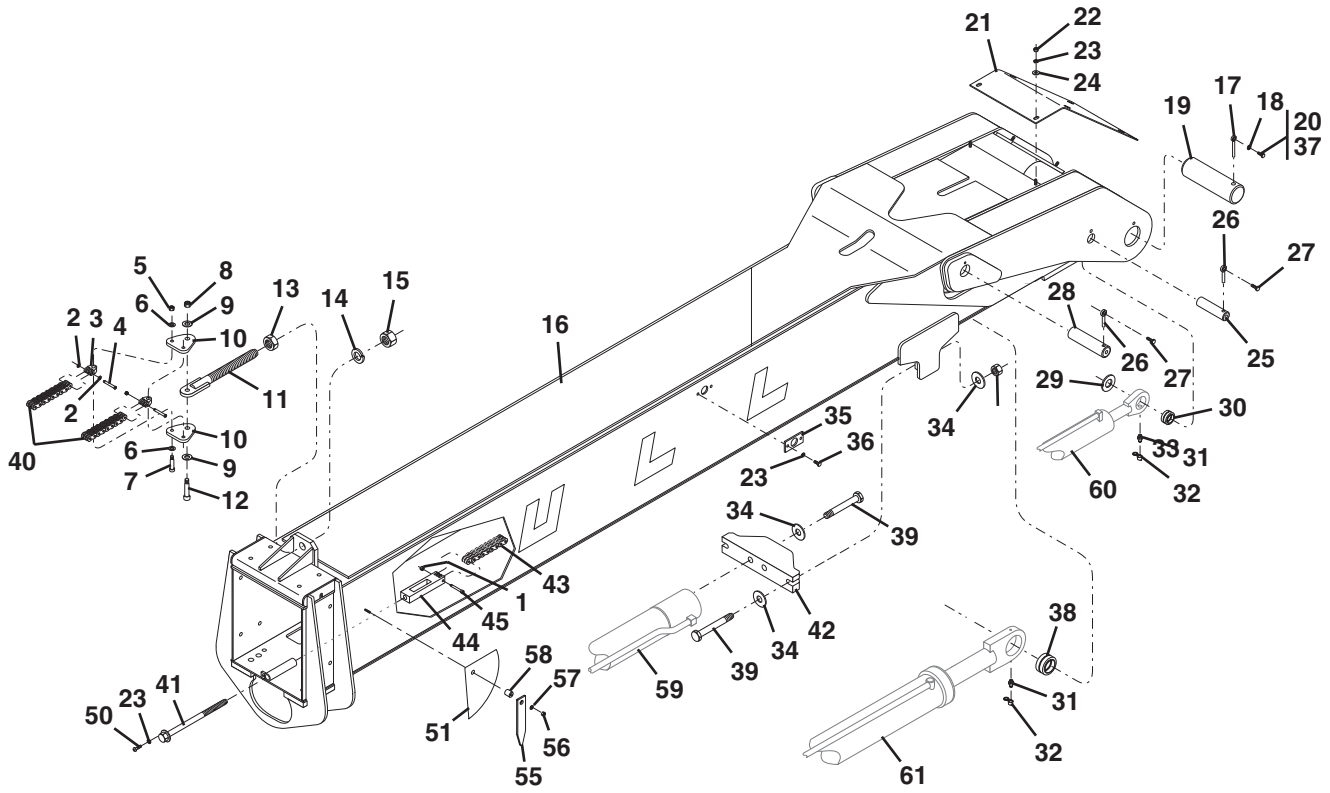
SECTION 2 BOOM



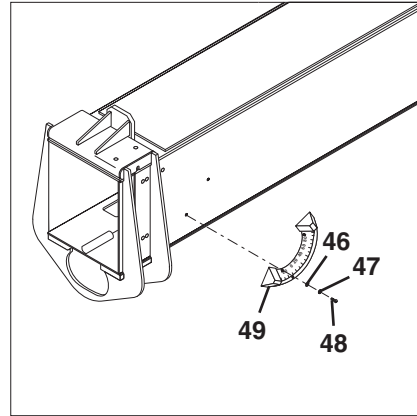


BOOM

Figure 2-1 First Boom Section



S/N 0160014713 thru 0160033170



S/N 0160009654 thru 0160014712 including 0160008714

PV0462

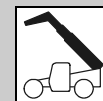


Figure 2-1 First Boom Section

| Item | Part Number | Qty. | Description | Rev. |
|------|-------------|------|---|------|
| 1 | 10705000 | 1 | HEX LOCKNUT, 1/4-20 | |
| 2 | 8642237 | 4 | RETAINING RING | |
| 3 | 7139416 | 2 | ANCHOR CLEVIS | |
| 4 | 8124138 | 2 | CHAIN CLEVIS PIN | |
| 5 | 10701658 | 2 | HEX LOCKNUT, 3/8-16 | |
| 6 | 10701254 | 4 | FLAT WASHER, 1/2 | |
| 7 | 10837753 | 2 | SHOULDER BOLT, 1/2X1-3/4 | |
| 8 | 10701662 | 1 | HEX LOCKNUT, 5/8-11 | |
| 9 | 10701257 | 2 | FLAT WASHER, 3/4 | |
| 10 | 10265729 | 2 | CHAIN EQUALIZER | |
| 11 | 10238726 | 1 | CHAIN ADJUSTMENT ANCHOR | |
| 12 | 10721439 | 1 | SHOULDER BOLT, 3/4X2 | |
| 13 | 10701567 | 1 | HEX JAM NUT, 1-1/4-7 | |
| 14 | 10701319 | 1 | LOCKWASHER, 1-1/4 | |
| 15 | 10701517 | 1 | HEX NUT, 1-1/4-7 | |
| 16 | 1100371 | 1 | FIRST BOOM SECTION | |
| 17 | 10138806 | 2 | LOCK PIN | |
| 18 | 10701314 | 2 | LOCKWASHER, 5/8 | |
| 19 | 10267799 | 2 | BOOM PIVOT PIN | |
| 20 | 10700605 | 2 | HEX CAPSCREW, 5/8-11X2-1/4 | |
| 21 | 10239098 | 1 | BOOM COVER | |
| 22 | 10701508 | 6 | HEX NUT, 3/8-16 | |
| 23 | 10701310 | 8 | LOCKWASHER, 3/8 | |
| 24 | 10701404 | 6 | FLAT WASHER, 3/8 | |
| 25 | 10136240 | 2 | REAR CARRIAGE TILT CYLINDER PIN, (rod end) | |
| 26 | 3841203 | 4 | LOCK PIN | |
| 27 | 10700403 | 4 | HEX CAPSCREW, 1/2-13X1-1/4 | |
| 28 | 10136907 | 2 | HOIST CYLINDER PIN, (rod end) | |
| 29 | 10701446 | AR | FLAT WASHER | |
| 30 | 8050001 | 2 | REAR CARRIAGE TILT CYLINDER BUSHING, (rod end) | |
| 31 | 10716611 | 4 | GREASE FITTING | |
| 32 | 10732689 | 4 | GREASE FITTING COVER | |
| 33 | 10701209 | 2 | HEX NUT, 1-8, GR8 | |
| 34 | 10701259 | 4 | FLAT WASHER, 1 | |
| 35 | 10139068 | 1 | PROXIMITY MOUNTING PLATE, (S/N 0160009654 thru 0160032405 including 0160008714) | |
| | 1001091370 | 1 | PROXIMITY MOUNTING PLATE, (S/N 0160032406 & After) | |
| 36 | 10700202 | 2 | HEX HD CAPSCREW, 3/8-16X3/4 | |
| 37 | 0100011 | AR | LOCTITE #242, (apply to item 20) | |
| 38 | 10718830 | 4 | HOIST CYLINDER BUSHING, (rod end) | |
| 39 | 10700940 | 2 | HEX HD CAPSCREW, 1-8X6-1/2, GR8 | |
| 40 | 8127030 | 2 | UPPER CHAIN, (197.25" long) | |
| 41 | 10138374 | 1 | ROD TENSIONER | |
| 42 | 10238512 | 1 | EXTENSION CYLINDER BASE MOUNT | |
| 43 | 10138745 | 1 | LOWER CHAIN, (167.25" long) | |
| 44 | 10238723 | 1 | ADJUSTMENT BLOCK CHAIN | |
| 45 | 10727310 | 1 | SHOULDER BOLT, 1/2 DIA X2 | |
| 46 | 10701430 | 2 | FLAT WASHER, #8, (S/N 0160009654 thru 0160014713 including 0160008714) | |



BOOM

Figure 2-1 First Boom Section (Continued)

| Item | Part Number | Qty. | Description | Rev. |
|------|-------------|------|--|------|
| 47 | 10701354 | 2 | STAR WASHER, #8, (S/N 0160009654 thru 0160014712 including 0160008714) | |
| 48 | 10702034 | 2 | ROUND HD SLOTTED SCREW, #8-32X1/2, (S/N 0160009654 thru 0160014712 including 0160008714) | |
| 49 | 10238252 | 1 | BOOM ANGLE INCLINOMETER, (S/N 0160009654 thru 0160014712 including 0160008714) | |
| 50 | 10703194 | 1 | BUTTON HD SOCKET CAPSCREW, 1/4-20X1/2 | |
| 51 | 4105262 | 1 | BOOM ANGLE INDICATOR DECAL, (S/N 0160014713 & After) | |
| 52 | 7075611 | 1 | BOOM ANGLE INDICATOR POINTER, (S/N 0160014713 thru 0160033170) | |
| 53 | 8305647 | 1 | HEX LOCK NUT, 7/16-14, (S/N 0160014713 thru 0160033170) | |
| 54 | 8307113 | 3 | PLAIN WASHER, 7/16, (S/N 0160014713 thru 0160033170) | |
| 55 | 1001098769 | 1 | BOOM ANGLE INDICATOR POINTER, (S/N 0160033171 & After) | |
| 56 | 8305645 | 1 | HEX LOCK NUT, 3/8-16, (S/N 0160033171 & After) | |
| 57 | 4711600 | 1 | PLAIN WASHER, 3/8, (S/N 0160033171 & After) | |
| 58 | 1001096404 | 1 | SPACER, ANDLE INDICATOR, (S/N 0160033171 & After) | |
| 59 | | Ref | BOOM EXTENSION CYLINDER, (see Figure 9-5 for details) | |
| 60 | | Ref | HOIST CYLINDER, (see Figure 9-4 for details) | |
| 61 | | Ref | REAR CARRIAGE TILT CYLINDER, (see Figure 9-2 for details) | |
| 62 | 10701312 | 4 | LOCKWASHER, 1/2 | |
| 63 | 10717554 | 4 | CLAMP, 3/8 | |