

**Series 300
3029, 4039, 4045,
6059, and 6068
OEM Diesel Engines**

**OPERATION AND
SERVICE MANUAL**



**Deere Power Systems Group
OMRG18293 Issue H4
(This manual replaces OMRG18293 C3)
LITHO IN U.S.A.
ENGLISH**



Introduction

READ THIS MANUAL CAREFULLY to learn how to operate and service your engine correctly. Failure to do so could result in personal injury or equipment damage.

THIS MANUAL SHOULD BE CONSIDERED a permanent part of your engine and should remain with the engine when you sell it.

MEASUREMENTS IN THIS MANUAL are given in both metric and customary U.S. unit equivalents. Use only correct replacement parts and fasteners. Metric and inch fasteners may require a specific metric or inch wrench.

RIGHT-HAND AND LEFT-HAND sides are determined by standing at the drive or flywheel end (rear) of the engine and facing toward the front of the engine.

WRITE ENGINE SERIAL NUMBERS and the option codes in the spaces indicated in the Specifications section. Accurately record all the numbers. Your dealer also needs these numbers when parts are ordered. File the identification numbers in a secure place off the engine.

SETTING FUEL DELIVERY beyond published factory specifications or otherwise overpowering will result in loss of warranty protection for this engine.

CERTAIN ENGINE ACCESSORIES such as radiator, air cleaner, and instruments are optional equipment on John Deere OEM Engines. These accessories may be provided by the equipment manufacturer instead of John Deere. This operator's manual applies only to the engine and those options available through the John Deere distribution network.

Engine Owner

JOHN DEERE ENGINE OWNER:

Don't wait until you need warranty or other service to meet your local John Deere Engine Distributor or Service Dealer.

Learn who he is and where he is. At your first convenience, go meet him. He'll want to get to know you and to learn what your needs might be.

UTILISATEURS DE MOTEURS JOHN DEERE:

N'attendez pas d'être obligé d'avoir recours à votre Concessionnaire ou Point de Service le plus proche pour vous adresser à lui.

Renseignez-vous dès que possible pour l'identifier et le localiser. À la première occasion, prenez contact avec lui et faites-vous connaître. Il sera lui aussi heureux de faire votre connaissance et de savoir que vous pourrez compter sur lui le moment venu.

AN DEN BESITZER DES JOHN DEERE MOTORS:

Warten Sie nicht auf einen evt. Reparaturfall um den nächstgelegenen John Deere Händler kennen zu lernen.

Machen Sie sich bei ihm bekannt und nutzen Sie sein "Service Angebot".

PROPRIETARIO DEL MOTORE JOHN DEERE:

Non aspetti fino a quando ha bisogno della garanzia o di un altro tipo di assistenza per incontrarsi con il Suo Concessionario che fornisce l'assistenza tecnica.

Impari a conoscere chi è e dove si trova. Alla Sua prima occasione cerchi d'incontrarlo. Egli desidera farsi conoscere e conoscere le Sue necessità.

PROPIETARIO DE EQUIPO JOHN DEERE:

No espere hasta necesitar servicio de garantía o de otro tipo para conocer a su Distribuidor de Motores John Deere o al Concesionario de Servicio.

Entérese de quién es, y dónde está situado. Cuando tenga un momento, vaya a visitarlo. A él le gustará conocerlo, y saber cuáles podrían ser sus necesidades.

JOHN DEERE MOTORÄGARE:

Vänta inte med att besöka Din John Deere återförsäljare till dess att Du behöver service eller garanti reparation.

Bekanta Dig med var han är och vem han är. Tag första tillfälle att besöka honom. Han vill också träffa Dig för att få veta vad Du behöver och hur han kan hjälpa Dig.

Engine Owner

Identification Views

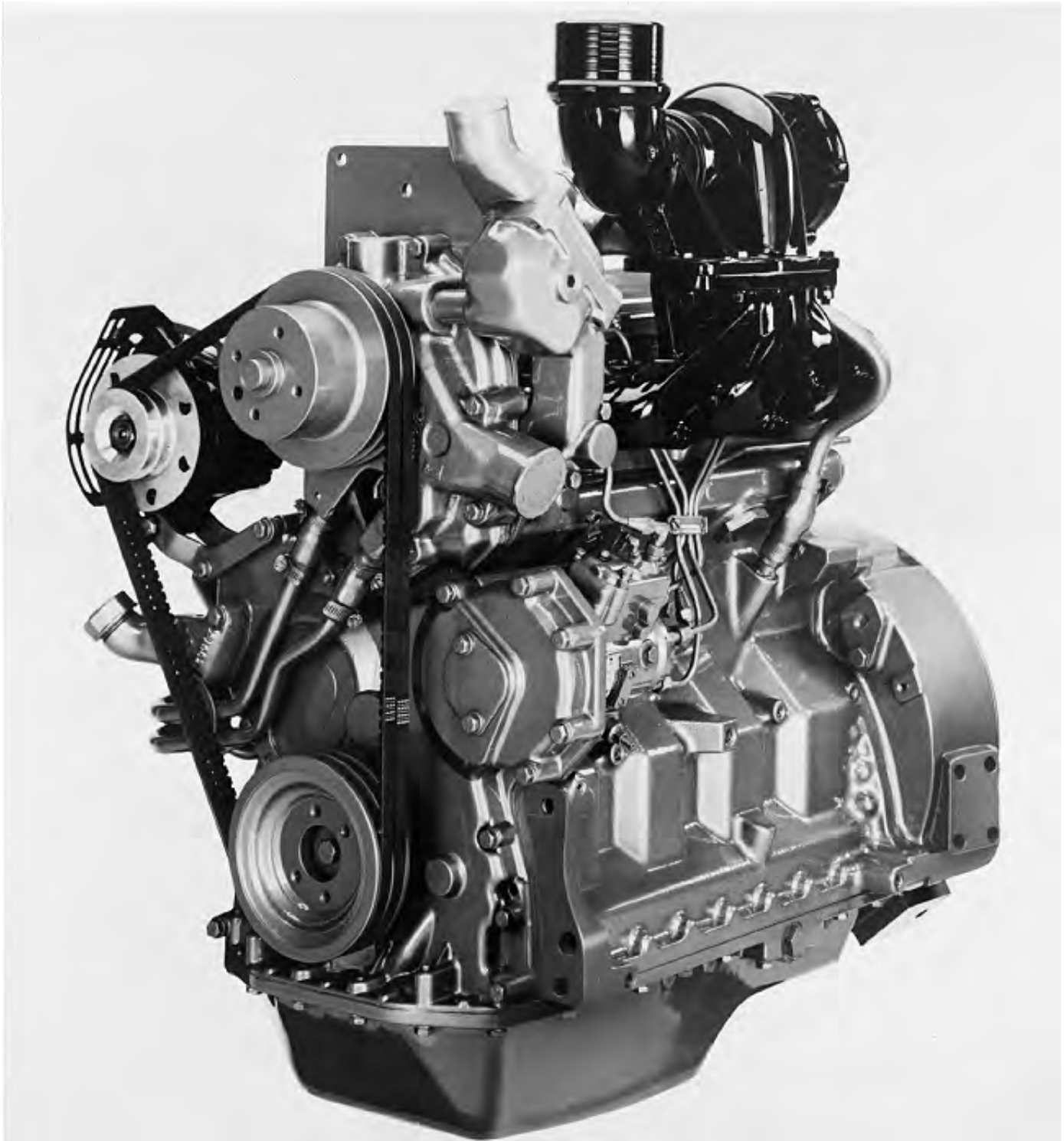


3029D Engine

CD30356 -UN-03FEB93

S11,CONT,L3 -19-17FEB93

Identification Views

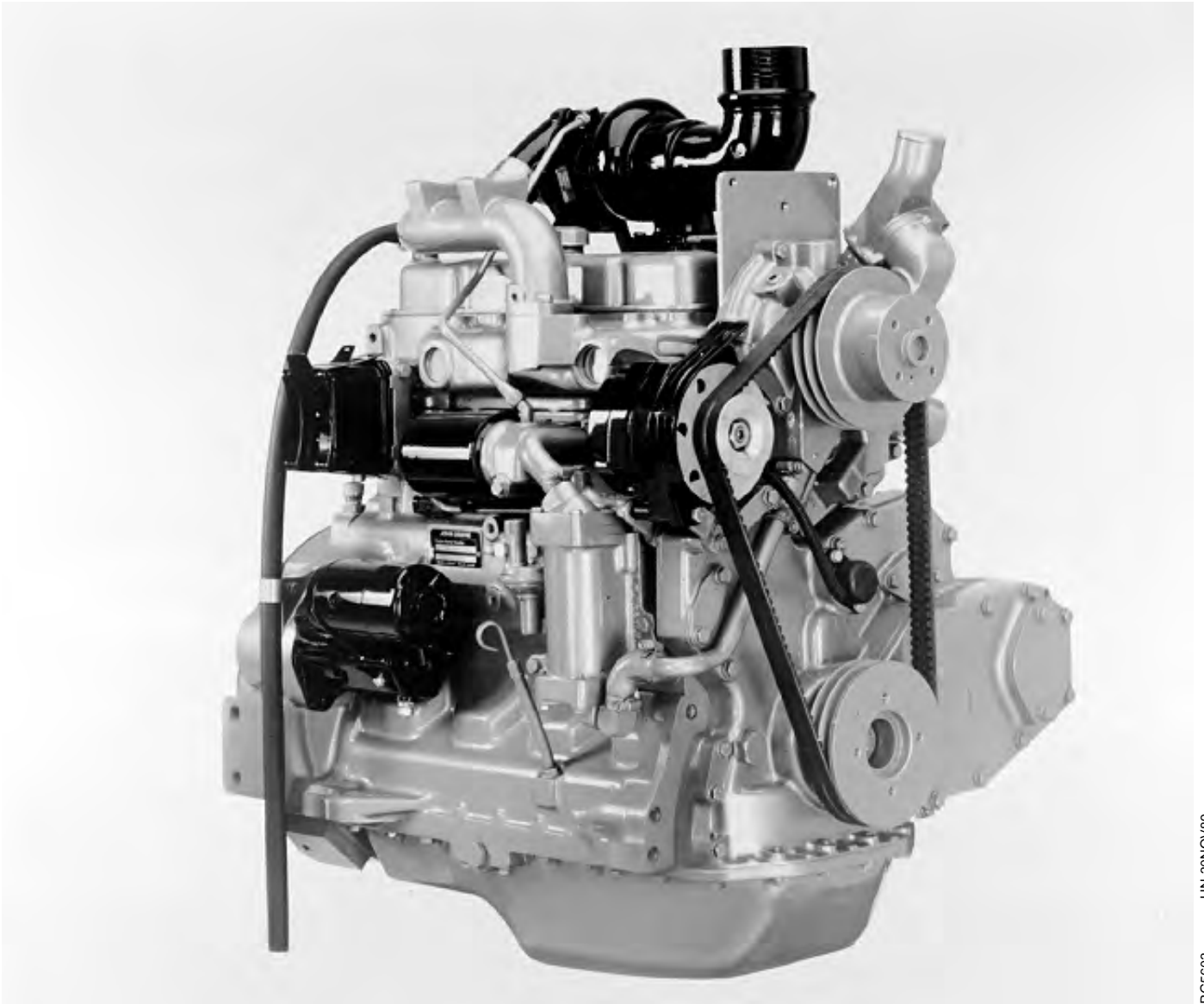


4039T Engine

RG6613 -UN-03FEB93

S11.CONT.L4 -19-17FEB93

Identification Views

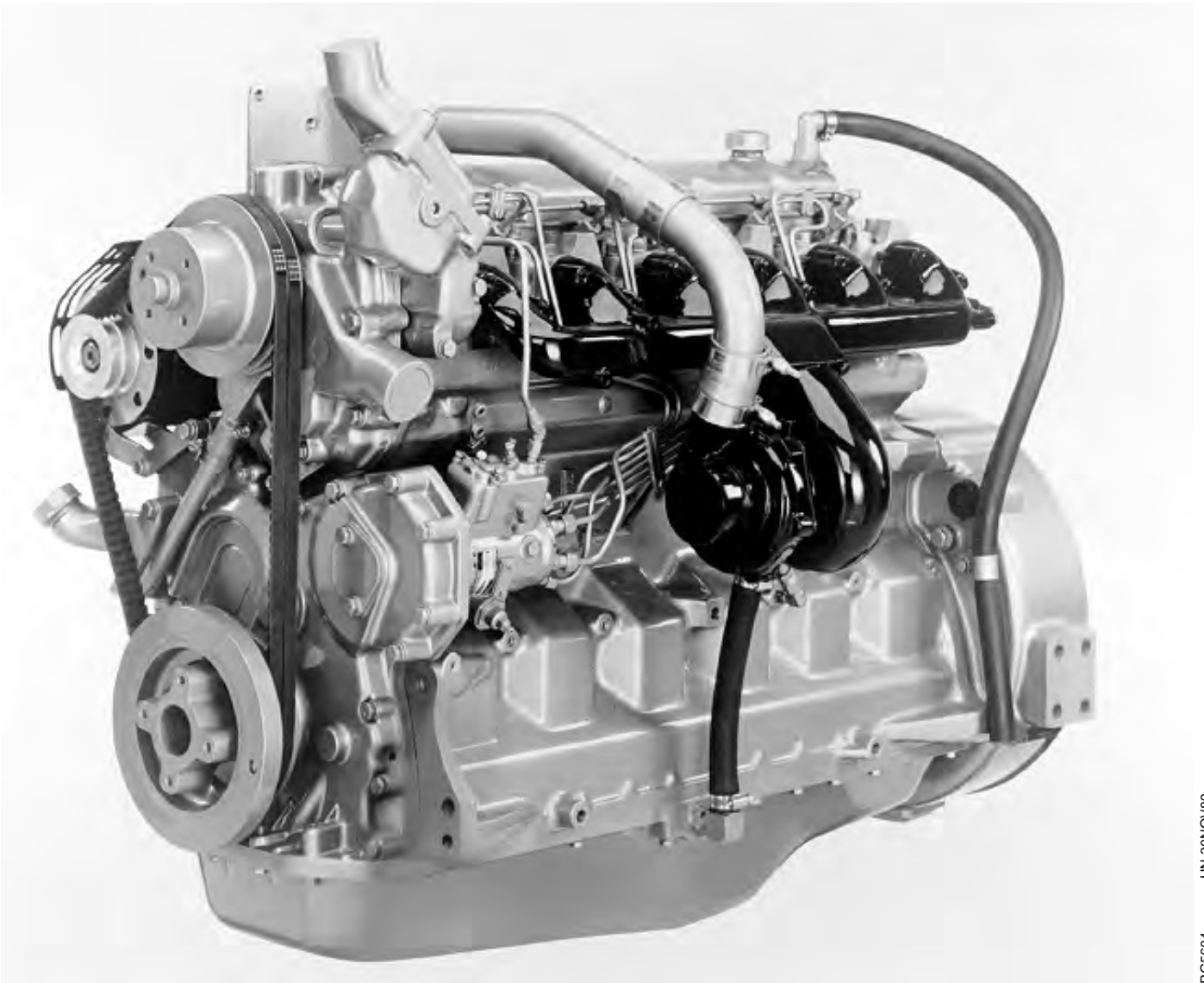


4045T Engine

RG5603 JUN-30NOV/89

S11,CONT,L1 -19-08FEB91

Identification Views



6068T Engine

RG5604 -UN-30NOV89

S11,CONT,L2 -19-08FEB91

Record Keeping

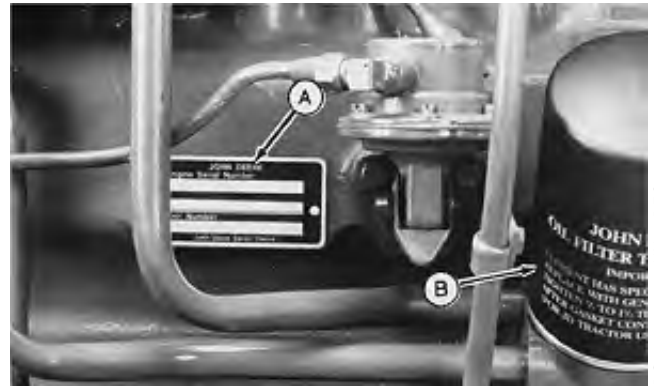
ENGINE SERIAL NUMBER PLATE

Each engine has a 13-digit John Deere engine serial number. The first two digits identify the factory that produced the engine:

“T0” indicates the engine was built in Dubuque, Iowa

“CD” indicates the engine was built in Saran, France

Your engine's serial number plate (A) is located on right-hand side of cylinder block near the oil filter housing (B).



RG,18293,SNPLTE-19-09AUG94

RECORD ENGINE SERIAL NUMBER

Your engine will have a serial number plate.

Record all of the numbers and letters found on your engine serial number plate in the spaces provided below.

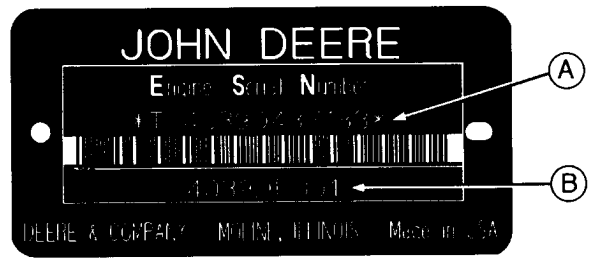
This information is very important for repair parts or warranty information.

Engine Serial Number (A)

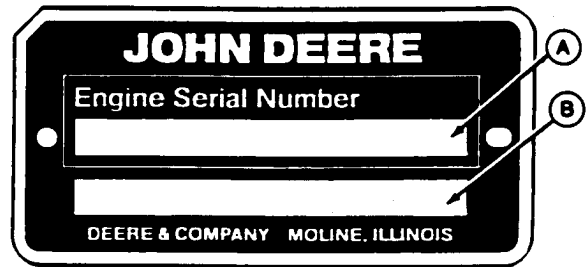
Application Data (B)

European Customer Model/Application Data (C)

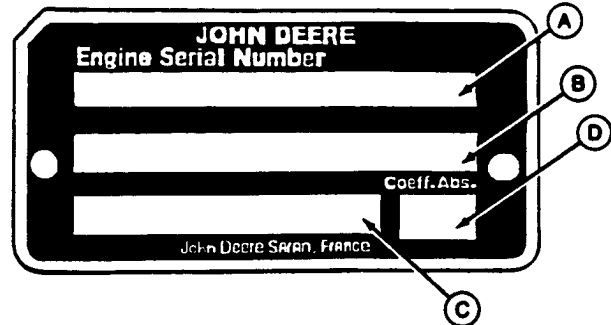
Coefficient of Absorption Value (D)



Dubuque Bar Coded Serial Number Plate



Dubuque Serial Number Plate



Saran Serial Number Plate

S55,OMSN,B -19-02AUG94

-UN-07JUL94

RG7225

-UN-06JAN90

RG5609

-UN-09JAN90

RG5610